

# Environmental Contamination of Different Areas of Isfahan Province of Iran with *Toxocara spp.* Eggs using Molecular Methods

## Abstract

**Background:** Toxocariasis is a parasitic disease caused by the larval stage of *Toxocara canis* and *Toxocara cati*. Infective stage of this parasite for human develops on soil. So, in this work contamination of the soil of public environments in five geographical areas of Isfahan province of Iran has been investigated. **Materials and Methods:** In this descriptive study, 355 soil samples were collected from parks, children's playgrounds, student dormitories, and university environments, and examined by Flotation method. The samples were then inspected using microscopic and molecular methods. **Results:** From the 355 examined soil samples in 77 (21.69%), and 87 (24.50%) cases *Toxocara* eggs were detected by microscopic and molecular methods, respectively. In the molecular method, 31 (8.70%) cases of *T. cati* and 44 (12.39%) cases of *T. canis* were identified. **Conclusion:** *Toxocara* eggs were identified in all areas of Isfahan province, although contamination rate was higher in Fereyduh Shahr and Semirum counties.

**Keywords:** Environmental pollution, Iran, Isfahan, polymerase chain reaction, *Toxocara*

## Introduction

*Toxocara canis* and *Toxocara cati* are nematode helminths of dogs and cats, respectively.<sup>[1]</sup>

Ova are excreted on the soil along with the animal's feces. After development on soil, if the eggs are eaten by humans, their larvae release in the intestine, migrate to different tissues, especially liver and cause human toxocariasis.<sup>[2]</sup> Several epidemiological studies have shown that soils of different areas such as parks, tourist regions, children's play stations, crowded and busy areas, slaughterhouses, and student dormitories are contaminated with (dogs and cats' *Toxocara* eggs). These contaminated soils can remain as sources of human infection.<sup>[3-10]</sup> *Toxocara* eggs are very resistant and usually survive in the cold winters for 6–12 months.<sup>[11]</sup> However, development and survival of the eggs are dependent on different environmental factors such as soil type, pH, light, temperature, humidity, and vegetation. The eggs on the soil are physically dispersed by rainfall, birds, beetles, earthworms, snails, and flies.<sup>[12-15]</sup>

Poverty, ignorance, eating soil, poor sanitation, presence of stray dogs and cats,

and suitable climatic conditions are the factors in favor of transmission of *Toxocara* infection to humans.<sup>[16,17]</sup> Children are at a higher risk for toxocariasis due to more contact with the soil and the habit of eating and transfer of objects to their mouths.<sup>[18]</sup> Mice and birds feed on soil, so, they are easily infected as intermediate hosts. Final hosts become infected by eating these intermediate hosts.<sup>[19]</sup> Therefore, in the control program of *Toxocara* infections study of soil contamination is extremely important.<sup>[20]</sup> Numerous studies have been performed so far about soil contamination with *Toxocara* eggs in different parts of the world<sup>[21]</sup> and in Iran.<sup>[22]</sup> In the world, prevalence of *T. canis* in dogs and *T. cati* in cats were 1.2% and 3.2% in Australia, 4.4% and 4.6% in the Netherlands, and 6.1% and 4.7% in Germany respectively.<sup>[23]</sup> In Iran according to Maleki *et al.*<sup>[24]</sup> study, the average rate of soil contamination with *Toxocara spp* eggs was 16%, with the highest and lowest level of contamination in Tehran (38.7%), and Qazvin (3.15%) provinces, respectively. However, the situation of soil contamination in Isfahan province of Iran is not clear. Isfahan province with population of over five million located in the center of Iran

Gholamreza Pourshahbazi,  
Hossein Khanahmad<sup>1</sup>,  
Reza Khadivi<sup>2</sup>,  
Nader Pestehchian,  
Hossein A. Yousefi<sup>1</sup>,  
Rahman Abdizadeh<sup>3</sup>,  
Somayeh Mousavi Mobarakeh,  
Fateme Hoseini Boldaji<sup>1</sup>,  
Hossein Yousofi Darani

Departments of Medical Parasitology and Mycology, <sup>1</sup>Genetics and Molecular Biology and <sup>2</sup>Community Medicine, School of Medicine, Isfahan University of Medical Sciences, Isfahan, <sup>3</sup>Department of Medical Parasitology, School of Medicine, Shahrekord University of Medical Sciences, Shahrekord, Iran

**Address for correspondence:** Prof. Hossein Yousofi Darani, Infectious Diseases and Tropical Medicine Research Center, Isfahan University of Medical Sciences, Isfahan, Iran. E-mail: Yousofidarani@gmail.com

**Received:** 31 January 2022  
**Revised:** 03 April 2022  
**Accepted:** 05 April 2022  
**Published:** 30 August 2022

Access this article online

Website: www.advbiores.net

DOI: 10.4103/abr.abr\_36\_22

Quick Response Code:



**How to cite this article:** Pourshahbazi G, Khanahmad H, Khadivi R, Pestehchian N, Yousefi HA, Abdizadeh R, *et al.* Environmental contamination of different areas of Isfahan province of Iran with *Toxocara spp.* eggs using molecular methods. Adv Biomed Res 2022;11:72.

This is an open access journal, and articles are distributed under the terms of the Creative Commons Attribution-NonCommercial-ShareAlike 4.0 License, which allows others to remix, tweak, and build upon the work non-commercially, as long as appropriate credit is given and the new creations are licensed under the identical terms.

For reprints contact: WKHLRPMedknow\_reprints@wolterskluwer.com

and serves as a pass way from North to South and East to West of the country. Annually many domestic, and foreign tourists visit this province. Previous studies about soil contamination with *Toxocara spp.* in Isfahan were limited to certain areas. So, in this work soil of different counties and different locations such as parks, playgrounds, slaughterhouses, squares, and streets together have been examined.

Molecular methods were applied for better differentiation of *T. canis* and *T. cati* eggs.

## Materials and Methods

In this descriptive research, study population consisted of soil samples that were collected from different areas of Isfahan province. The sample size for the whole province was 355, in which 115 were allocated to Isfahan (115 samples), and the remaining to 4 other selected counties including Ardestan, Semirum, Naein, and Fereydun Shahr (each county 60 samples).

### Samples collection

Samples were collected from residential areas, tourist regions, busy places, parks, universities, student dormitories, slaughterhouses, and children's playgrounds. Isfahan is a large province, so considering climate, and geographical locations, five counties including; (Ardestan in the north), (Semirum in the south), (Naein in the east), (Fereydun Shahr in the west) and (Isfahan in the center) were selected.

### Microscopic examination

In this study, for each sample, at least 250 gms of soil were taken from a depth of 5 cm and transferred to a plastic bag, and then transferred to the parasitology laboratory at Isfahan University of Medical Sciences. The soil samples were then filtered to remove the coarse particles. In the next step, the eggs of *Toxocara* parasite were isolated by flotation method (Sheather) and wet mount of each sample was observed under the microscope.

### Molecular examination

#### DNA extraction

The parasite's eggs, which were collected, using saturated sugar solution, were broken using freeze-thaw and homogenizing methods (Bertin Instrument, Precelleys). Thereafter, DNA extraction was performed using the phenol-chloroform method.<sup>[24-26]</sup>

#### Polymerase chain reaction

For *T. canis*, forward primer (NC5: 5'-ATTAACGCGCAAG GTTGTGG-3') and reverse primer (NC2: 5'-TGGCCATGCATTCTCATTC-3') and for *T. cati* forward primer (NC5: 5'-CTTCTGGTGCATTCTTT CGC-3') and reverse primer (NC2: 5'- CCAAGCAACAA CAACTACGC-3') were designed by NCBI database and

Genius Prime (Version 2019.2.1) software. The polymerase chain reaction (PCR) reactions were carried out in a 25 µL final volume, comprised 12.5 µL of PCR master mix (Amplicon, Denmark), 1 µL of each primer, 5 µL of template DNA, and 6.5 µL distilled water. Denaturation at 95 for 15 s, annealing at 61 for 30 s, and activation at 72 for 30 s were all used in the PCR procedures (Bio-RAD T100 thermal cycler, USA). After that, the PCR products were run on 1.5% agarose gel and visualized with UV detect equipment.

## Results

In this study, 355 soil samples were examined by microscopic and molecular methods for detection of *Toxocara* eggs. In microscopic method, 77 samples were positive, details of these results have been reported in Table 1. Following molecular analysis (PCR), 87 samples were positive for *Toxocara spp.*, 12 soil samples had mixed contamination Table 2. Semirum and Fereydun Shahr counties had the highest rate of contamination. Shape of *Toxocara* eggs in soil samples collected from Isfahan province following microscopic examination have been shown in Figure 1. Using the Chi-Square test, it was shown that *Toxocara spp.* The contamination rate was different in different counties and the difference was statistically significant ( $P$  value = 0.002).

**Table 1: Prevalence of *Toxocara spp* eggs in soil samples in Isfahan province of Iran based on microscopic methods**

Location	Total sample (No)	Positive (No)	Percent (%)
Ardestan	60	8	13.33
Semirum	60	17	28.33
Fereydun Shahr	60	21	35
Naein	60	7	11.66
Esfahan	115	24	20.86
Total	355	77	21.69



**Figure 1: *Toxocara* parasite egg observed in soil samples collected from Isfahan province of Iran**

The most contaminated areas, were parks and children’s playgrounds for *T. cati* eggs and slaughterhouses for *T. canis* eggs [Table 3]. Using the Chi-Square test, there was no significant relationship between *Toxocara* eggs in soil and the sample location ( $P$  value = 0.083). Soil contamination with *Toxocara* eggs based on climatic conditions in different counties has been shown in Table 4. Using the Chi-Square test, it was shown that there is a difference in soil contamination rate among different climate conditions and this difference was statistically

significant ( $P$  value = 0.001). Frequency map of soil contamination with *Toxocara spp* eggs has been shown in Figure 2. Results of PCR experiment following gel electrophoresis indicating 260bp band for *T. canis* and 204bp for *T. cati* have been shown in Figure 3.

**Discussion**

Human toxocariasis is caused by the ingestion of infective *Toxocara* eggs in soil or soil materials. Different studies have also shown that the prevalence of toxocariasis in humans directly depended on the degree of soil contamination.[15,26,27] So, in this study the contamination rate of soil samples collected from different parts of Isfahan

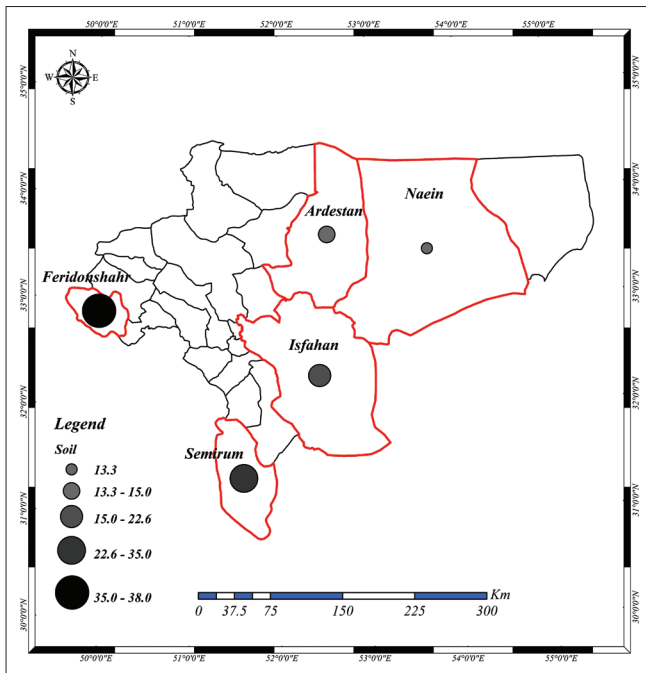


Figure 2: Frequency map of soil contamination with *Toxocara* eggs in different counties of Isfahan province

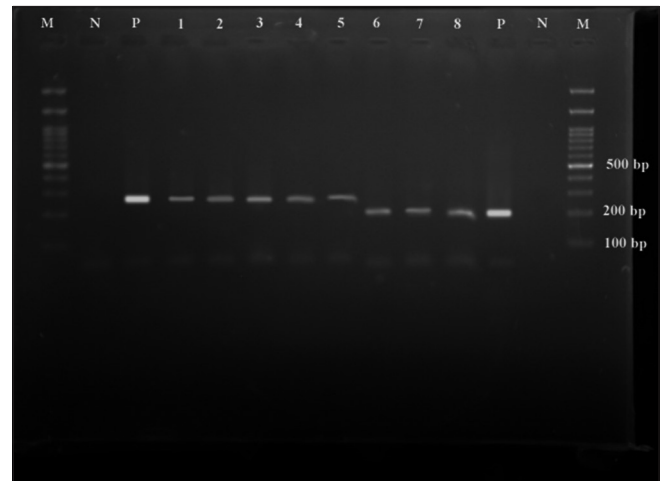


Figure 3: Results of PCR experiment following gel electrophoresis indicating 260bp band for *T. canis* and 204bp for *T. cati*, (M = Marker, P = positive control, N = negative control for *T. canis* and *cati*), and Lines 1, 2, 3, 4, 5 with a length of 260bp indicate *T. canis* samples and lines 6, 7, 8 with a length of 204bp indicate *T. cati* samples

**Table 2: Prevalence of *Toxocara spp* eggs in soil samples in Isfahan province of Iran based on molecular method**

Location	Total Sample (No)	Positive (No)	Percent (%)	<i>T.cati</i> (No %)	<i>T.canis</i> (No %)	Mix (No %)
Ardestan	60	9	15	3 (5)	5 (8.33)	1 (1.66)
Semirum	60	21	35	5 (8.33)	11 (18.33)	5 (8.33)
Fereydun Shahr	60	23	38	6 (10)	14 (23.33)	3 (5)
Naein	60	8	13.3	4 (6.66)	4 (6.66)	0
Esfahan	115	26	22.60	13 (11.30)	10 (8.69)	3 (2.60)
Total	355	87	24.50	31 (8.73)	44 (12.39)	12 (3.38)

**Table 3: Prevalence of *Toxocara spp* eggs in soil samples in Isfahan province of Iran based on location of sample collection**

Location	Total Sample	Positive (No)	Percent (%)	<i>T. cati</i> (No %)	<i>T. canis</i> (No %)	Mix (No %)
Home	70	14	20	9 (12.85)	4 (5.71)	1 (1.42)
Busy area	40	7	17.5	3 (7.5)	4 (10)	0
Park	45	16	35.5	3 (6.66)	8 (17.77)	5 (11.11)
Play ground	90	29	32.22	10 (11.11)	16 (17.77)	3 (3.3)
Dormitory	15	2	13.3	2 (13.33)	0	0
Slaughterhouse	95	19	20	4 (4.21)	12 (12.63)	3 (3.15)
Total	355	87	24.50	31 (8.73)	44 (12.39)	12 (3.38)

**Table 4: Prevalence of *Toxocara spp* eggs in soil samples in Isfahan province of Iran based on climate condition**

Climatic conditions	Total Sample	Positive (No)	Percent	<i>T. cati</i> (No %)	<i>T. canis</i> (No %)	Mix (No %)
Warm-dry	120	17	28.3	7 (11.66)	9 (14.99)	1 (1.66)
Cold-dry	60	21	35	5 (8.33)	11 (18.33)	5 (8.33)
Wet-cold	60	23	38	6 (10)	14 (23.33)	3 (5)
Mild	115	26	22.60	13 (11.30)	10 (8.69)	3 (2.60)
Total	355	87	24.50	31 (8.73)	44 (12.39)	12 (3.38)

province has been investigated using both microscopic and molecular methods.

In different investigations in Iran, contamination rates of 6.3%, 22.2%, and 38.7% were reported for soil samples collected from Urmia, Khorramabad, and Tehran, respectively.<sup>[27-29]</sup> While in our work contamination rates of 21.69% and 24.5% were achieved using parasitological and molecular methods, respectively.

Soil contamination rates may vary in different regions due to climate and presence of stray animals.<sup>[30]</sup> In this regard, contamination rates of 9.7%, 6.7%, 28.1%, 11.57%, 55%, 14.03%, 11.87% has been reported for North America, Latin America, Europe, Asia, the Middle East, Australia and Turkey, respectively.<sup>[31]</sup> These different results are due to several different factors such as climate, poverty, social status, type of soil, and number of stray dogs and cats in these areas.<sup>[32]</sup> In a work in Turkey, soil contamination with *Toxocara spp* in Fenced parks and Fenceless parks were different.<sup>[33]</sup> Differential diagnosis of *Toxocara spp*. is very important in epidemiological studies. Microscopic examination is not suitable for distinguishing between two species of *Toxocara*, especially for soil samples. Molecular methods are usually considered as an accurate method for differentiation of *Toxocara* species. Most studies have shown that dog's *Toxocara* is the predominant species, however, other studies have also mentioned the cat's species in some areas is the dominant strain. Our work is the first report of soil contamination with *Toxocara spp* eggs in dogs and cats in Isfahan province in central Iran. According to our results in Fereydun Shahr and Semirum counties, higher contamination rates were seen. So, in these counties *Toxocara* infection may easily happen in human. Control measures, especially control of stray dogs and cats should be applied by health authorities in these two regions.

## Conclusion

According to results of this work, *Toxocara* parasite eggs exist in the soil of public areas of Isfahan province. The contamination rate was higher in Fereydun Shahr and Semirum counties.

## Ethics approval

This work was approved by Isfahan University of medical sciences research ethical committee with code number of IR.MUI.MED.REC.1400.529

## Acknowledgments

Thanks to Dr. Vahid Moghaddas (Isfahan General Veterinary Administration) for his support in collecting soil samples from slaughterhouses.

## Financial support and sponsorship

This work was supported by a grant from Isfahan University of medical sciences.

## Conflicts of interest

There are no conflicts of interest.

## References

- Glickman LT, Schantz PM. Epidemiology and pathogenesis of zoonotic toxocarosis. *Epidemiol Rev* 1981;3:230-50.
- Hotez PJ, Wilkins PP. Toxocarosis: America's Most Common Neglected Infection of Poverty and A Helminthiasis of Global Importance? San Francisco, USA: Public Library of Science; 2009.
- Deutz A, Fuchs K, Auer H, Kerbl U, Aspöck H, Köfer J. Toxocara-infestations in Austria: A study on the risk of infection of farmers, slaughterhouse staff, hunters and veterinarians. *Parasitol Res* 2005;97:390-4.
- Giudice PAF, Lescano SAZ, Gonzáles WHR, Giuffrida R, Bandeira FN, Kmetiuk LB, et al. Serosurvey and associated risk factors of anti-Toxocara spp. antibodies in bovines from slaughterhouses of southeastern Brazil. *Parasit Vectors* 2021;14:1-9. doi: 10.1186/s13071-021-04755-w.
- Mahdi N, Ali H. Toxocara eggs in the soil of public places and schools in Basrah, Iraq. *Ann Trop Med Parasitol* 1993;87:201-5.
- Jarosz W, Mizgajka-Wiktor H, Kirwan P, Konarski J, Rychlicki W, Wawrzyniak G. Developmental age, physical fitness and Toxocara seroprevalence amongst lower-secondary students living in rural areas contaminated with Toxocara eggs. *Parasitology* 2010;137:53-63.
- Raissi V, Saber V, Bahadory S, Akhlaghi E, Raiesi O, Aslani R, et al. Comparison of the prevalence of Toxocara spp. eggs in public parks soils in different seasons, from 2017 to 2018, Tehran Province, Iran. *Clin Epidemiol Global Health* 2020;8:450-4.
- Kleine A, Springer A, Strube C. Seasonal variation in the prevalence of Toxocara eggs on children's playgrounds in the city of Hanover, Germany. *Parasite Vectors* 2017;10:1-8. doi: 10.1186/s13071-017-2193-6.
- Shin DH, Seo M, Shim S-Y, Hong JH, Kim J. Urbanization and Parasitism: Archaeoparasitology of South Korea. *The Bioarchaeology of Urbanization*: Springer; 2020. p. 73-89.
- Fecková M, Antolová D, Zalesný G, Halánová M, Štrkolcová G, Goldová M, et al. Seroepidemiology of human toxocarosis in selected population groups in Slovakia: A cross-sectional study. *J Infect Public Health* 2020;13:1107-11.
- Tiyo R, Guedes T, Falavigna D, Falavigna-Guilherme A.

- Seasonal contamination of public squares and lawns by parasites with zoonotic potential in southern Brazil. *J Helminthol* 2008;82:1-6. doi: 10.1017/S0022149X07870829.
12. Beer S, Novosil'tsev G, Mel'nikova L. The role of the water factor in the dissemination of *Toxocara* eggs and the spread of toxocarosis in a megalopolis. *Parazitologiya* 1999;33:129-35.
  13. Webster GA. A report on *Toxocara canis* Werner, 1782. *Can J Comp Med Vet Sci* 1958;22:272.
  14. O'Donnell CJ, Meyer KB, Jones JV, Benton T, Kaneshiro ES, Nichols JS, *et al.* Survival of parasite eggs upon storage in sludge. *Appl Environ Microbiol* 1984;48:618-25.
  15. Mizgajska H. Eggs of *Toxocara* spp. in the environment and their public health implications. *J Helminthol* 2001;75:147-51.
  16. Pozio E. Foodborne nematodes. *Foodborne Parasites in the Food Supply Web*. Amsterdam, The Netherlands: Elsevier; 2015. p. 165-99.
  17. Rai SK, Uga S, Ono K, Rai G, Matsumura T. Contamination of soil with helminth parasite eggs in Nepal. *Southeast Asian J Trop Med Public Health* 2000;31:388-93.
  18. Van Wijnen J, Clausing P, Brunekreef B. Estimated soil ingestion by children. *Environ Res* 1990;51:147-62.
  19. Choi D, Lim JH, Choi D-C, Lee KS, Paik SW, Kim S-H, *et al.* Transmission of *Toxocara canis* via ingestion of raw cow liver: A cross-sectional study in healthy adults. *Korean J Parasitol* 2012;50:23-7.
  20. Papavasiliopoulos V, Pitiriga V, Birbas K, Elefsiniotis J, Bonatsos G, Tsakris A. Soil contamination by *Toxocara canis* and human seroprevalence in the Attica region, Greece. *Germes* 2018;8:155-61.
  21. Fakhri Y, Gasser R, Rostami A, Fan C, Ghasemi S, Javanian M, *et al.* *Toxocara* eggs in public places worldwide-A systematic review and meta-analysis. *Environ Pollut* 2018;242:1467-75.
  22. Eslahi AV, Badri M, Khorshidi A, Majidani H, Hooshmand E, Hosseini H, *et al.* Prevalence of toxocara and toxascaris infection among human and animals in Iran with meta-analysis approach. *BMC Infect Dis* 2020;20:1-17. doi: 10.1186/s12879-020-4759-8.
  23. Afshar MJA, Zahabiun F, Heydarian P, Saadati HM, Mohtasebi S, Khodamoradi F, *et al.* A systematic review and meta-analysis of toxocarosis in Iran: Is it time to take it seriously? *Acta Parasitol* 2020;65:569-84.
  24. Maleki B, Khorshidi A, Gorgipour M, Mirzapour A, Majidani H, Foroutan M. Prevalence of toxocara spp. eggs in soil of public areas in Iran: A systematic review and meta-analysis. *Alexandria J Med* 2018;54:97-101.
  25. Aboutalebian S, Ahmadikia K, Fakhim H, Chabavizadeh J, Okhovat A, Nikaeen M, *et al.* Direct detection and identification of the most common bacteria and fungi causing otitis externa by a stepwise multiplex PCR. *Front Cell Infect Microbiol* 2021;11:210.
  26. Trejo CAC, Romero Núñez C, García Contreras AdC, Mendoza Barrera GE. Soil contamination by toxocara spp. eggs in a University in Mexico city. *Rev Bras Parasitol Vet* 2012;21:298-300.
  27. Zibaei M, Abdollahpour F, Birjandi M, Firoozeh F. Soil contamination with *Toxocara* spp. eggs in the public parks from three areas of Khorram Abad, Iran. *Nepal Med Coll J* 2010;12:63-5.
  28. Tavassoli M, Hadian M, Charesaz S, Javadi S. *Toxocara* Spp. Eggs in Public Parks of Urmia City, West Azer baijan Province Iran. *Iranian J Parasitol* 2008;3:24-9.
  29. Tavalla M, Oormazdi H, Akhlaghi L, Razmjou E, Lakeh MM, Shojaee S, *et al.* Prevalence of parasites in soil samples in Tehran public places. *Afr J Biotechnol* 2012;11:4575-8.
  30. Marques JP, Guimarães CdR, Boas AV, Carnaúba PU, Moraes JD. Contamination of public parks and squares from Guarulhos (São Paulo State, Brazil) by toxocara spp. and *Ancylostoma* spp. *Rev Inst Med Trop São Paulo* 2012;54:267-71.
  31. Avcioglu H, Burgu A. Seasonal prevalence of *Toxocara* ova in soil samples from public parks in Ankara, Turkey. *Vector-Borne Zoonotic Dis* 2008;8:345-50.
  32. Congdon P, Lloyd P. *Toxocara* infection in the United States: The relevance of poverty, geography and demography as risk factors, and implications for estimating county prevalence. *Int J Public Health* 2011;56:15-24.
  33. Avcioglu H, Balkaya I. The relationship of public park accessibility to dogs to the presence of *Toxocara* species ova in the soil. *Vector-Borne Zoonotic Dis* 2011;11:177-80.