

# Preventing Stillbirth: A Review of Screening and Prevention Strategies

Laure Noël<sup>1,\*</sup>, Conrado Milani Coutinho<sup>2</sup>, Basky Thilaganathan<sup>3</sup>

## Abstract

Stillbirth is a devastating pregnancy complication that still affects many women, particularly from low and middle-income countries. It is often labeled as “unexplained” and therefore unpreventable, despite the knowledge that placental dysfunction has been identified as a leading cause of antepartum stillbirth. Currently, screening for pregnancies at high-risk for placental dysfunction relies on checklists of maternal risk factors and serial measurement of symphyseal-fundal height to identify small for gestational age fetuses. More recently, the first-trimester combined screening algorithm developed by the Fetal Medicine Foundation has emerged as a better tool to predict and prevent early-onset placental dysfunction and its main outcomes of preterm preeclampsia, fetal growth restriction and stillbirth by the appropriate use of Aspirin therapy, serial growth scans and induction of labour from 40 weeks for women identified at high-risk by such screening. There is currently no equivalent to predict and prevent late-onset placental dysfunction, although algorithms combining an ultrasound-based estimation of fetal weight, assessment of maternal and fetal Doppler indices, and maternal serum biomarkers show promise as emerging new screening tools to optimize pregnancy monitoring and timing of delivery to prevent stillbirth. In this review we discuss the strategies to predict and prevent stillbirths based on first-trimester screening as well as fetal growth and wellbeing assessment in the second and third trimesters.

**Keywords:** Biomarkers; Fetal growth restriction; Placental dysfunction; Prevention; Screening; Stillbirth

## Introduction

Stillbirth is defined as a fetal demise that occurs in the second half of pregnancy and before birth, whether it happens antepartum or after the onset of labor. There are variations in the threshold that is used to define a stillbirth with gestational age ranging from 20 to 28 weeks.<sup>1</sup> However, early stillbirths occurring before 28 weeks are not commonly reported in low-income countries. In 2015 it was estimated that about 2.6 million women experienced a stillbirth, which represents a burden of 7000 fetal deaths every day or 18.4 stillbirths/1000 births.<sup>2</sup> The vast majority of stillbirths (98%) occurred in low and middle-income settings, with 75% of all stillbirths recorded in sub-Saharan Africa and south Asia, where half of these fetal deaths were diagnosed intrapartum. In contrast, the

stillbirth rate is 3.4/1000 births in developed countries, with only 10% presenting as intrapartum stillbirths.

Many stillbirths are still labeled as “unexplained,” which is also often incorrectly interpreted to infer that these stillbirths were not preventable. Less than 10% of stillbirths are associated with congenital abnormalities, whereas other causes such as maternal infection, malnutrition or obesity, diabetes, prolonged pregnancy, or placental dysfunction are all potentially modifiable.<sup>2</sup> The most recent estimates suggest that the majority—at least 60%—of antepartum stillbirths are a consequence of placental dysfunction in high-income countries.<sup>3</sup> Screening for pregnancies at high-risk of placental dysfunction in the first trimester is conventionally based on the assessment of maternal risk factors through antenatal checklists, even though risk algorithms combining maternal factors, ultrasound markers, and serum biomarkers have been developed and validated. The identification of fetuses at high-risk for stillbirth in later pregnancy is usually based on estimation of fetal weight, as poor fetal growth is a marker of placental dysfunction. The rationale for this strategy relies on the finding of a higher-than-expected percentage of small-for-gestational age (SGA) babies in stillbirths.<sup>4,5</sup> However new evidence challenges this conventional approach.

In this review we will discuss the strategies to predict and prevent stillbirths based on first-trimester screening, fetal growth, and assessment of fetal wellbeing.

## First trimester screening for pregnancies at high-risk for placental dysfunction

### The current checklist-based approach to risk assessment

The majority of international societies recommend the use of a checklist system based on maternal risk factors to

<sup>1</sup> Department of Obstetrics and Gynecology, Centre Hospitalier Universitaire de Liège, 4000 Liège, Belgium; <sup>2</sup> Department of Gynecology and Obstetrics, Hospital das Clínicas, Faculdade de Medicina de Ribeirão Preto, Universidade de São Paulo, Ribeirão Preto, SP, 14025-000, Brazil; <sup>3</sup> Fetal Medicine Unit, St George's University Hospitals NHS Foundation Trust, Blackshaw Road, London, SW17 0QT, United Kingdom.

\* Corresponding author: Laure Noël, Department of Obstetrics and Gynecology, Centre Hospitalier Universitaire de Liège, 4000 Liège, Belgium. E-mail: laurenoel@hotmail.be

Copyright © 2022 The Chinese Medical Association, published by Wolters Kluwer Health, Inc.

This is an open access article distributed under the terms of the Creative Commons Attribution-Non Commercial-No Derivatives License 4.0 (CCBY-NC-ND), where it is permissible to download and share the work provided it is properly cited. The work cannot be changed in any way or used commercially without permission from the journal.

Maternal-Fetal Medicine (2022) 4:3

Received: 21 April 2022 / Accepted: 18 May 2022

First online publication: 22 July 2022

<http://dx.doi.org/10.1097/FM9.000000000000160>

identify high-risk pregnancies.<sup>6–8</sup> For instance, a checklist of major risk factors (previous preeclampsia (PE), chronic hypertension, etc) and moderate risk factors (nulliparity, advanced maternal age, etc) is proposed by the National Institute for Health and Care Excellence (NICE) and the American College of Obstetricians and Gynecologists to identify women at high-risk for developing PE.<sup>6,7</sup> However, the sensitivity and specificity of these checklist-based systems are poor—for example, the NICE screening method only achieves detection rates of 30% for all PE and 40% for preterm PE at a 10% screen-positive rate.<sup>8,9</sup> The individual risk conferred by each risk factor is not taken into consideration—for example, maternal age and chronic hypertension are inappropriately considered as equally important (Fig. 1). Continuous variables such as maternal age or body mass index are classified in arbitrary categories, where for example a woman is considered low risk at 39 years of age, but becomes high risk on her 40<sup>th</sup> birthday. There is no factor that can mitigate the risk of presenting an adverse outcome—for example, normal weight or a history of previous uneventful pregnancies are not taken into account to reduce a woman's risk. The interaction between the risk factors to further increase or decrease the likelihood of developing the complication is not considered. In many instances, the woman must have developed the disorder in a previous pregnancy to be considered at high-risk. Finally, these checklists fail to produce an individual numerical estimate of risk, which precludes individualization of care for the woman.

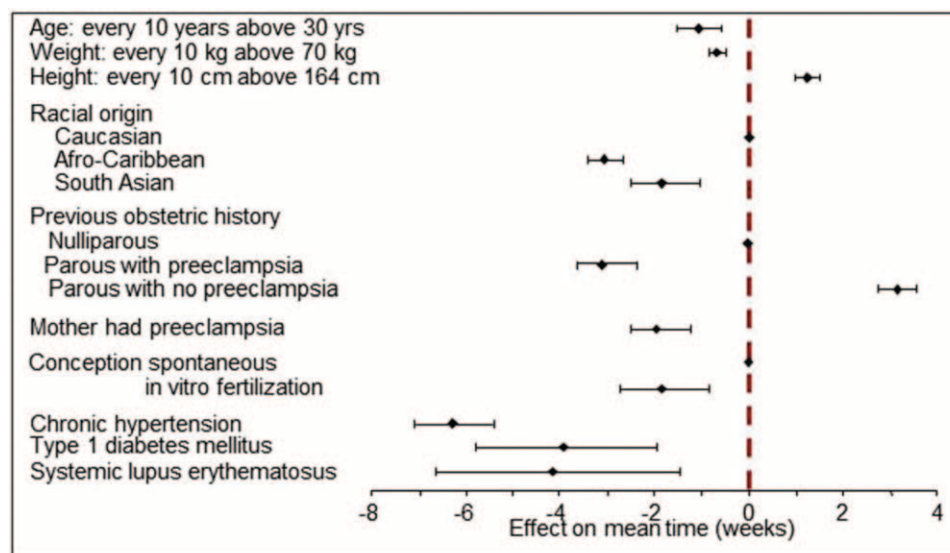
### The basis for the Fetal Medicine Foundation (FMF) screening algorithm

To overcome the weaknesses of checklist-based screening, new algorithms have been developed to identify pregnancies

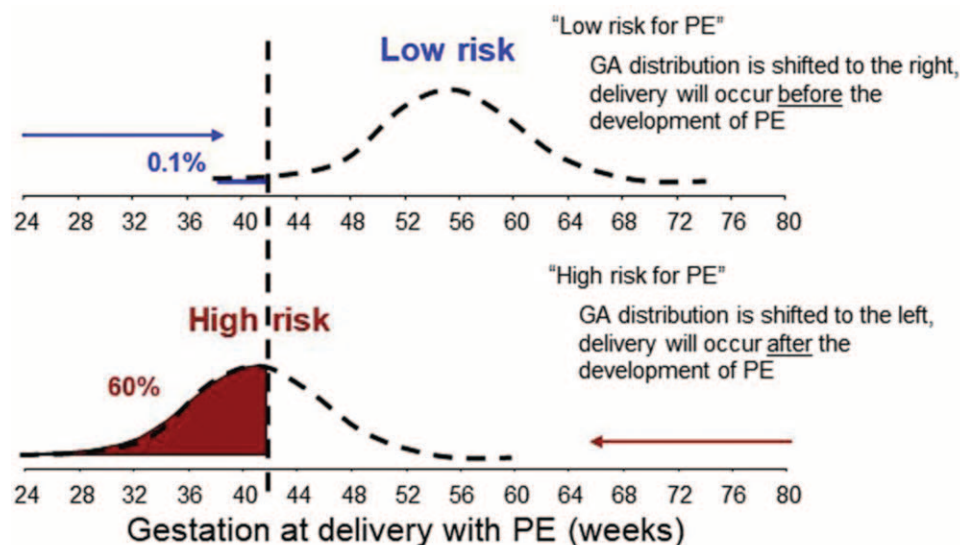
at high-risk of placental dysfunction. In these algorithms each risk factor is given an individual positive or negative weight and the interactions between these factors are accounted for in order to estimate the woman's personal numerical risk of developing placental dysfunction and related adverse outcomes. The first-trimester FMF algorithm is based on a competing risk approach, which uses the individual relative contribution of each demographic (age, weight, etc), medical (chronic hypertension, previous PE, etc), biochemical (serum biomarkers), and biophysical (blood pressure, uterine artery Doppler) risk factors to estimate a woman's individual risk of developing an adverse outcome related to placental dysfunction such as PE (Fig. 1).<sup>10</sup> The competing risk approach is able to account for treatment paradox (sometimes known as intervention bias), where a woman predicted to be at high risk of PE may not develop PE because she gives birth before she reaches the gestation at which she was destined to develop the disorder (Fig. 2). Under these circumstances, the model may be incorrectly assumed to have been inaccurate, but the use of statistical truncation in a competing risk model accounts for this phenomenon.

### The FMF screening algorithm for PE

The FMF algorithm has been externally validated to be accurate and head-to-head comparisons have shown the superiority of the FMF algorithm as compared to the conventional checklist-based method.<sup>8–11</sup> In the Screening PRogram for PE (SPREE) study, the first-trimester FMF algorithm combining maternal factors, mean arterial pressure, uterine artery pulsatility index, and serum placental growth factor showed a significantly higher detection rate for PE than the NICE checklist-based method.<sup>9,10</sup> Indeed, the FMF combined screening identifies 75% of women with preterm PE <37 weeks and



**Figure 1.** The basis for the Fetal Medicine Foundation (FMF) screening algorithm. In the FMF algorithm each risk factor is given an individual positive or negative weight in order to estimate the woman's personal numerical risk of developing preeclampsia (PE). For example the risk conferred by chronic hypertension is higher than that conferred by advancing maternal age, whereas a previous pregnancy without PE decreases the woman's risk of developing PE. Reprinted from Am J Obstet Gynecol, Vol 226(2s), Chaemsathong, P., D.S. Sahota, and L.C. Poon, *First trimester preeclampsia screening and prediction*, S1071-S1097.e2, Copyright (2022), with permission from Elsevier.



**Figure 2.** The Fetal Medicine Foundation screening algorithm is based on a competing risk approach. For each woman, the competing risk model gives the Gaussian (GA) distribution of gestational age at delivery with preeclampsia (PE). In women with a low risk for PE, the gestational age distribution is shifted to the right. Thus, in most pregnancies, delivery will occur before the development of PE. In women with a high risk for PE, the gestational age distribution is shifted to the left, indicating that PE is likely to occur before delivery. Reprinted from Am J Obstet Gynecol, Vol 226(2s), Chaemsithong, P., D.S. Sahota, and L.C. Poon, *First trimester preeclampsia screening and prediction*, S1071-S1097.e2, Copyright (2022), with permission from Elsevier.

41% of women with term PE  $\geq 37$  weeks at a 10% screen-positive rate.<sup>12</sup> The improved sensitivity allows the effective use and targeting of medical resources and the increased specificity reduces the inappropriate stigmatization of women as being at high-risk. Other models have also been proposed to predict PE in the first trimester, but very few have been externally validated or shown to be effective in clinical trials.<sup>8,13</sup> The individualized risk provided by such algorithm enables personalized care and improves the patient's compliance to medication. In the SPREE study, only 23% of women identified as high-risk for PE by the NICE method used Aspirin throughout pregnancy,<sup>9</sup> whereas the compliance reached 85% for most high-risk women identified by the FMF algorithm in the Aspirin for Evidence-Based Preeclampsia Prevention (ASPREE) trial.<sup>14</sup>

### **Efficacy of the FMF screening algorithm for placental dysfunction**

As discussed previously, most prediction models were developed using conventional sensitivity and specificity analysis without taking into account the treatment paradox—the impact of elective birth on avoiding subsequent stillbirth. It is therefore not surprising that most conventional prediction models have shown poor performance for predicting stillbirth. Most of the screening algorithms also treat PE, fetal growth restriction (FGR), and stillbirth as separate diseases rather than considering them as pregnancy outcomes that are frequently caused by the same disorder—placental dysfunction. Similarly, in adult life, headache, visual disturbances, and poor balance are outcomes (or symptoms) of the same disorder—brain cancer. In keeping with this relationship between disorder and outcomes, effective screening for PE should also be useful at predicting all outcomes of placental dysfunction including FGR and

stillbirth. In the SPREE study, the first-trimester FMF combined screening identified 46% of SGA neonates  $< 10^{\text{th}}$  percentile born at  $< 37$  weeks, but only 20% of those born at  $\geq 37$  weeks.<sup>15</sup>

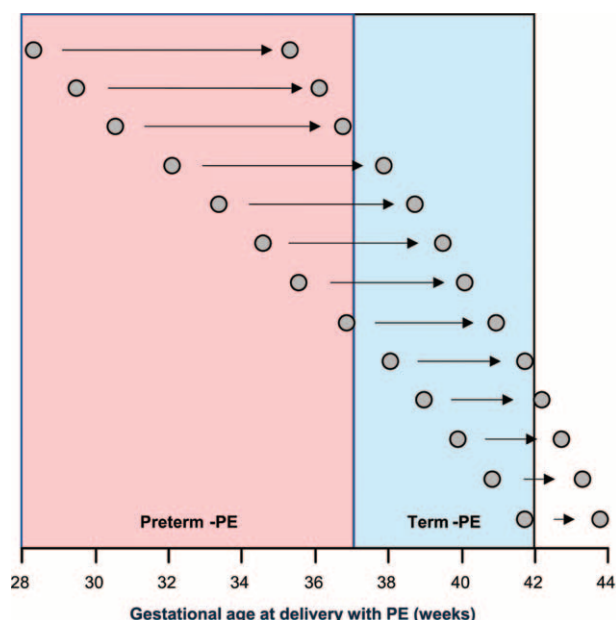
### **Efficacy of the FMF screening program in preventing adverse pregnancy outcomes**

The first-trimester FMF algorithm combined with the use of targeted low dose Aspirin therapy is effective in predicting and preventing preterm PE.<sup>16</sup> The ASPREE trial demonstrated a 62% reduction in the rate of preterm PE after prescription of prophylactic Aspirin therapy at 150 mg daily from 11–14 to 36 weeks' gestation for women identified at high-risk for PE by the first-trimester FMF algorithm.<sup>14</sup> However, the prophylactic use of Aspirin had no effect on the rate of term PE. One hypothesis is that Aspirin delays the gestational age at delivery with PE, counteracting the effect of Aspirin on the development of term PE due to a shift of high-risk pregnancies from the preterm period into cases with term PE (Fig. 3).<sup>17</sup> Use of Aspirin in the high-risk group in the ASPREE study was also associated with a 40% reduction of SGA birth  $< 10^{\text{th}}$  percentile at  $< 37$  weeks, but had no impact on the incidence of SGA birth at  $\geq 37$  weeks.<sup>15</sup> Therefore, screening for SGA birth  $< 10^{\text{th}}$  percentile by the FMF combined screening followed by appropriate Aspirin prophylaxis could also have an impact on reducing preterm SGA birth, but would not be expected to impact on term SGA births.

### **Clinical effectiveness of the FMF screening program in a routine healthcare setting**

Efficacy studies are undertaken under ideal research trial conditions and may not be transferable to a routine





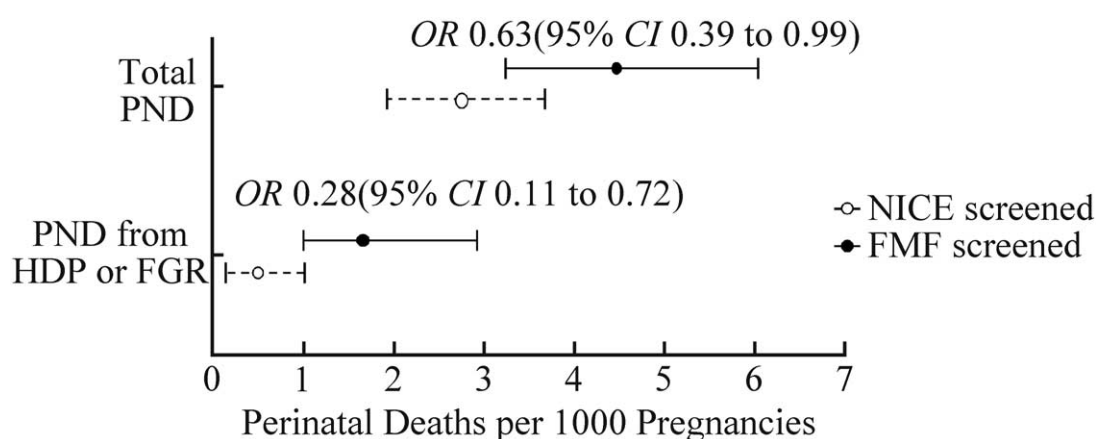
**Figure 3.** Aspirin delays the development of preeclampsia (PE), which could result in a shift of preterm PE cases into cases with term PE. This hypothesis could explain why the Aspirin for Evidence-Based Preeclampsia Prevention (ASPREE) trial demonstrated a reduction in the rate of preterm PE, but not of term PE, after prescription of prophylactic Aspirin therapy for women identified at high-risk for PE by the first-trimester Fetal Medicine Foundation algorithm.<sup>14</sup> Reprinted from Am J Obstet Gynecol, Vol 220(6), Wright, D. and K.H. Nicolaides, Aspirin delays the development of preeclampsia, 580.e1-580.e6, Copyright (2019), with permission from John Wiley and Sons, reproduction with permission.

healthcare setting without evaluation of clinical effectiveness in such an environment. In one such study, researchers looked at clinical outcomes before and after the implementation of the combined FMF algorithm with subsequent Aspirin prophylaxis, serial scans at 28 and 36 weeks, and induction of labor from 40 weeks for women identified at high-risk. They used interrupted time series analysis, which accounts for confounders and temporal trends, to demonstrate an 80% reduction of preterm PE.<sup>18</sup> They also

demonstrated a 45% reduction of term SGA birth <10<sup>th</sup> percentile which was attributed to the scheduled elective birth of high-risk pregnancies at 40 weeks of gestation, precluding the development of failed fetal growth in the post-term period.<sup>19</sup> The same authors evaluated the impact of these improvements in pregnancy outcomes on the prevalence of perinatal death (PND) rate—combining stillbirth after 24 weeks and neonatal death within 28 days of birth.<sup>20</sup> The perinatal death rate was reduced from 4.46/1000 to 2.78/1000 births with a screening program based on the NICE checklist *vs.* the FMF combined screening. Specifically, there was a 70% reduction in PND associated with PE and/or FGR resulting in a fall in PND rates from 1.73/1000 to 0.48/1000 births (Fig. 4). It is therefore apparent that outcomes of pregnancies complicated by placental dysfunction might be improved by the implementation of first-trimester FMF combined screening and subsequent prophylactic Aspirin therapy, ultrasound monitoring, and elective birth at 40 weeks' gestation in high-risk women in routine clinical practice.

### Second trimester screening for pregnancies at high-risk for placental dysfunction

Ashoor *et al.* proposed a second-trimester algorithm for the prediction of stillbirths related to placental dysfunction defined by PE and/or a birthweight <10<sup>th</sup> percentile. The detection rate of the algorithm combining maternal risk factors, uterine artery Dopplers, and estimated fetal weight (EFW) at 19–24 weeks' gestation was 62% at a 10% false-positive rate (70% at <37 weeks *vs.* 29% at ≥37 weeks) for stillbirths related to placental dysfunction.<sup>3</sup> The authors propose a two-stage screening strategy to prevent stillbirths related to placental dysfunction, based on the first-trimester PE screening and targeted Aspirin use in the high-risk group followed by the second-trimester screening to identify pregnancies at high-risk for stillbirth between 24 and 37 weeks' gestation and offer close monitoring and optimal timing of delivery. If first and second-trimester combined screening might detect the majority of early-onset placental dysfunction, there is no equivalent screening tool for late-onset placental dysfunction.<sup>21</sup>



**Figure 4.** This graph shows absolute rates (95% confidence intervals) of perinatal death (PND) in women who underwent National Institute for Health and Care Excellence (NICE) or Fetal Medicine Foundation (FMF) first-trimester screening for preeclampsia, stratified by whether there was a diagnosis of hypertensive disorders of pregnancy (HDP) and/or fetal growth restriction (FGR). Adapted from Liu *et al.*<sup>20</sup>

### Other screening models for pregnancies at risk of stillbirth

There is expert consensus that the existing stillbirth prediction models are not yet suitable for clinical practice and to inform decision-making, and that there are limitations to their application.<sup>22–24</sup> In a systematic review including all stillbirth prediction models developed up to 2019, nearly all models showed a high-risk of bias due to the handling of missing data and the low number of events (stillbirths) in the population used to develop the model.<sup>22</sup> Unfortunately, the authors excluded studies that used the first-trimester combined test for PE as a screening tool for stillbirth and models that reported composite outcome including stillbirth. Moreover, women identified at high-risk by the prediction models are likely to be delivered earlier, before stillbirth happens, which introduces a treatment paradox. This further reduces the number of events and the performance of the models developed in observational studies.<sup>22</sup> A general criticism about existing prediction models is that they often lack internal validation.<sup>22–24</sup> In the same review, a limited number of the identified models had been internally validated and none were able to be externally validated in an independent dataset.<sup>22</sup> Allotey *et al.* recently published an individual participant data meta-analysis with the objective of performing an external validation of the existing stillbirth prediction models on a large cohort of women to increase the number of events.<sup>24</sup> Of the 40 identified models, only three could be included in the individual participant data due to the non-availability of the model equations and the lack of data on key variables used in most published models. The authors concluded that none of these models could be recommended for clinical practice and that further research was needed to develop and validate more robust prediction models. Another limitation of existing prediction models is that stillbirth is the endpoint or outcome of conditions other than placental dysfunction. It is therefore possible that several models would be required for different phenotypes of stillbirth, that is, those due to placental dysfunction or diabetes for example.<sup>24</sup>

### Later pregnancy interventions to reduce stillbirth

#### Rationale for screening based on fetal weight assessment

The majority of SGA neonates with birthweight <10<sup>th</sup> percentile are delivered at term.<sup>25</sup> The rationale for fetal size assessment is based on the association between perinatal mortality and SGA birth.<sup>25</sup> In recent studies, a birthweight <10<sup>th</sup> percentile was found in 30%–40% of stillbirths and there was a 3 to 4-times higher rate of birthweight <10<sup>th</sup> percentile among stillbirths than livebirths.<sup>5,26</sup> On the basis of this association, screening for SGA has been universally implemented in an attempt to reduce adverse outcomes by offering close monitoring and optimizing timing of birth for SGA fetuses. In routine antenatal care, detection of SGA fetuses usually relies on serial measurement of symphyseal-fundal height.<sup>27</sup> If suspicion arises, targeted or selective ultrasound evaluation of fetal growth and wellbeing is undertaken.<sup>27</sup> This strategy is still widely used even though it has been

demonstrated that a policy of universal third-trimester ultrasound screening increases the detection rate of SGA fetuses.<sup>28,29</sup>

#### Estimation of absolute fetal weight

Fetal ultrasound biometry is measured to calculate the EFW. There are many published formulae based on single or multiple parameters to estimate the fetal weight, but it has been demonstrated that the best formula is the Hadlock formula, which uses head circumference, abdominal circumference, and femur length.<sup>30</sup> The Hadlock formula can predict the birthweight within 10% in about 80% of singleton and 70% of twin pregnancies.<sup>31,32</sup>

#### Estimation of fetal weight percentile

Here, the estimation of gestational age must be accurate in order to establish the fetal weight percentile. Pregnancy dating by the last menstrual period is not always reliable and as a result, pregnancy dating by fetal crown-rump length (CRL) at 8–14 weeks or by the head circumference if the CRL is over 84 mm is the preferred method.<sup>33</sup>

The obtained EFW is then plotted against a fetal size reference chart to obtain a fetal weight percentile for gestational age.<sup>33</sup> There is a lack of consensus about the optimal fetal size reference chart to establish the EFW percentile for the gestational age. Charts provide different percentiles for the same EFW and therefore variable rates of SGA fetuses in the same population.

National reference charts correspond to the geography of a particular country and are usually constructed retrospectively based on measured neonatal birthweight rather than EFW by ultrasound assessment.<sup>34</sup> There are two main problems associated with this retrospective approach to establishing fetal size reference charts. First they usually include non-healthy pregnancies with occult morbidities that might impact fetal growth, but not result in fetal demise.<sup>35</sup> Secondly, they contain very few preterm cases and even then, the birthweight of preterm babies is likely to be influenced negatively by the pathology that triggered prematurity.<sup>36</sup> To overcome this issue, Nicolaides *et al.* developed a fetal weight reference chart for all fetuses of a given gestational age, including those remaining in utero by using ultrasound EFW.<sup>36</sup> Using this approach, they demonstrated that previous fetal weight reference charts underestimated fetal weight because there were an increased proportion of SGA fetuses in the preterm birth cohort.<sup>36</sup> More importantly, it seems peculiar that the country of origin or the maternal passport might account for a difference in fetal growth. The biological explanation for a difference in growth by geographical location is more likely to be related to environmental, socio-economic and nutritional factors rather than ethnicity or nationality per se.<sup>35</sup>

International fetal size reference standard charts are not descriptive but prescriptive. In other words, they are constructed prospectively and show how fetuses should grow in a healthy population at low risk for adverse pregnancy outcomes and fetal growth impairment.<sup>33,35</sup> Two international standards, the WHO sponsored study and the INTERGROWTH-21<sup>st</sup> project, have been developed prospectively based on low-risk pregnancies from

both high- and low-income countries.<sup>37,38</sup> The INTERGROWTH-21<sup>st</sup> project showed that fetal growth is similar across the world in low-risk pregnancies and would be the preferred fetal size reference standard in our opinion.<sup>35</sup>

Customized charts are adjusted for variables that affect fetal growth such as maternal weight, height, ethnicity, and parity.<sup>39</sup> The advocates of customized charts argue that these variables are physiological, while others consider them as proxy markers for adverse pregnancy outcomes that should not be used to normalize poor fetal growth. For example, ethnicity is associated with socioeconomic status and education that are risk factors for poor maternal health and stillbirth.<sup>35</sup> By defining a set 10% SGA rate in a population, customization does not take into consideration the variations in maternal malnutrition that would account for higher rates of underweight neonates in low *vs.* high-income countries.<sup>35</sup> The implementation of these customized fetal size charts has not shown a reduction in the stillbirth rate in the UK.<sup>40</sup>

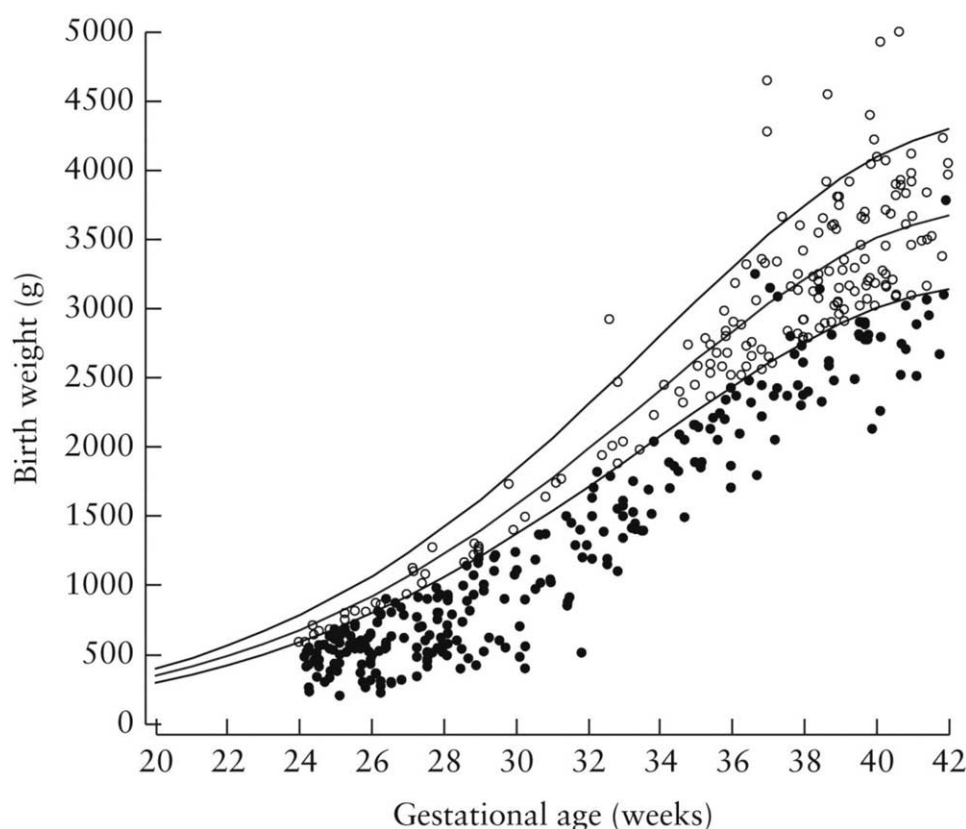
### Fetal growth velocity

Fetal growth velocity assessment on serial scans has also been proposed to identify placental dysfunction, but the

benefit of this approach is uncertain. In a large series of 44,000 pregnancies undergoing routine ultrasound evaluation at 19–24 and 35–37 weeks, the performance of screening for SGA neonates by a single scan at 35–37 weeks was not improved by adding fetal growth velocity between the second and third trimesters.<sup>41</sup> Similarly, fetal growth velocity was not predictive of adverse perinatal outcome in the Trial of Randomized Umbilical and Fetal Flow in Europe-2 study that prospectively evaluated more than 800 fetuses with severe FGR at 22–37 weeks' gestation.<sup>42</sup>

### SGA vs. FGR

SGA fetuses are found in 30% to 40% of all stillbirths.<sup>5,26</sup> However, the relationship between birthweight and the risk of stillbirth is known to weaken with advancing gestational age (Fig. 5). In recent studies, about 65% to 70% of stillbirths before 32 weeks had a birthweight <10<sup>th</sup> percentile, whereas only 25% to 35% of stillbirths after 37 weeks were SGA.<sup>3–5</sup> Moreover, the bodyweight of stillbirth fetuses decreases through maceration in utero and by dehydration between delivery and autopsy, suggesting that the true prevalence of SGA in stillbirth



**Figure 5.** Gestational age and birthweight distribution of antepartum stillbirths, plotted on the reference range developed by Nicolaides *et al.*<sup>36</sup> and demonstrating the median, 90<sup>th</sup> and 10<sup>th</sup> percentiles. The black dots represent the stillbirths related to placental dysfunction because the baby was small-for-gestational age or the pregnancy was complicated by preeclampsia (60% of all antepartum stillbirths). The white dots represent the stillbirths due to other causes or unexplained (40% of all antepartum stillbirths). Placental dysfunction was associated with 72% of antepartum stillbirths <37 weeks, whereas only 33% of antepartum stillbirths at term were associated with placental dysfunction. Reprinted from *Ultrasound Obstet Gynecol*, Vol 59, Ashoor, G., Syngelaki, A., Papastefanou, I., Nicolaides, K.H. and Akolekar, R., Development and validation of model for prediction of placental dysfunction-related stillbirth from maternal factors, fetal weight and uterine artery Doppler at mid-gestation, 61–68, Copyright (2022), with permission from John Wiley and Sons, reproduction with permission.

Table 1

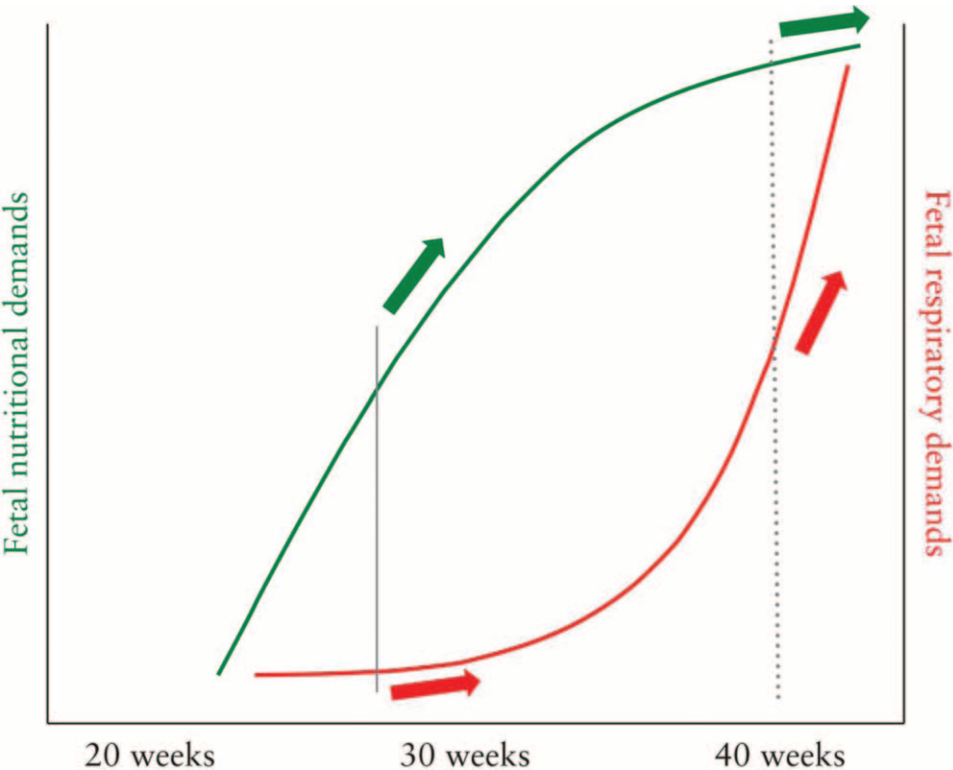
Delphi consensus-based definitions for early and late-onset FGR in absence of congenital anomalies.

Early FGR: GA <32 weeks, in absence of congenital anomalie	Late FGR: GA ≥32 weeks, in absence of congenital anomalie
AC/EFW <3 <sup>rd</sup> centile or UA-AEDF Or 1. AC/EFW <10 <sup>th</sup> centile combined with 2. UtA-PI >95 <sup>th</sup> centile and/or 3. UA-PI >95 <sup>th</sup> centile	AC/EFW <3 <sup>rd</sup> centile Or at least 2 out of 3 of the following 1. AC/EFW <10 <sup>th</sup> centile 2. AC/EFW crossing centiles >2 quartiles on growth centiles* 3. CPR <5 <sup>th</sup> centile or UA-PI >95 <sup>th</sup> centile

AC: Fetal abdominal circumference; AEDF: Absent end-diastolic flow; CPR: Cerebroplacental ratio; EFW: Estimated fetal weight; FGR: Fetal growth restriction; GA: Gestational age; PI: Pulsatility index; UA: Umbilical artery; UtA: Uterine artery.  
\* Growth percentiles are non-customized percentiles. Reprinted from Ultrasound Obstet Gynecol, Vol 48(3), Gordijn, S.J., Beune, I.M., Thilaganathan, B., Papageorgiou, A., Baschat, A.A., Baker, P.N., Silver, R.M., Wynia, K. and Ganzevoort, W., Consensus definition of fetal growth restriction: a Delphi procedure, 333–339, Copyright (2016), with permission from John Wiley and Sons, reproduction with permission.

is not as high as previously estimated and is more likely to be around 20% to 25%.<sup>43</sup> These findings would suggest that the majority of stillbirths at term typically occur in normally grown fetuses.<sup>5,26</sup> SGA corresponds to the statistical deviation of fetal size from a reference standard, with a threshold that is usually set below the 10<sup>th</sup> percentile. Most SGA babies are constitutionally small with no increased risk for adverse outcomes. In contrast, FGR is a functional disorder caused by placental dysfunction that prevents the fetus from reaching its growth potential. FGR is thus far more strongly associated with adverse perinatal outcomes than SGA.<sup>44</sup> Until

recently, there was no consensus on the definition of a FGR fetus in the literature. In 2016, a Delphi expert consensus for FGR was established on a combination of fetal biometry with functional indices including fetal and maternal Dopplers (Table 1). Different criteria are used to diagnose early- and late-onset FGR depending on the gestational age at onset of placental dysfunction before or after 32 weeks. This consensus definition recognises—for the first time—that late-onset FGR can be diagnosed in fetuses with an EFW above the 10<sup>th</sup> percentile by the combination of a reduced fetal growth velocity and abnormal fetal Dopplers.<sup>44</sup>



**Figure 6.** Increase in fetal nutritional (green line) and respiratory (red line) demands with advancing gestation. Early-onset placental dysfunction (vertical gray solid line) will impact at a time when fetal nutritional demands (green arrows) rise exponentially and therefore will have a disproportionate effect on fetal growth compared with development of fetal hypoxemia and demise. Placental dysfunction at term (vertical gray dotted line) will impact at a time when fetal respiratory needs (red arrows) rise exponentially and therefore likely to compromise fetal wellbeing before fetal growth is impaired. Reprinted from Ultrasound Obstet Gynecol, Vol 52, Thilaganathan, B., Ultrasound fetal weight estimation at term may do more harm than good, 5-8, Copyright (2018), with permission from John Wiley and Sons, reproduction with permission.



### Early-onset and late-onset FGR

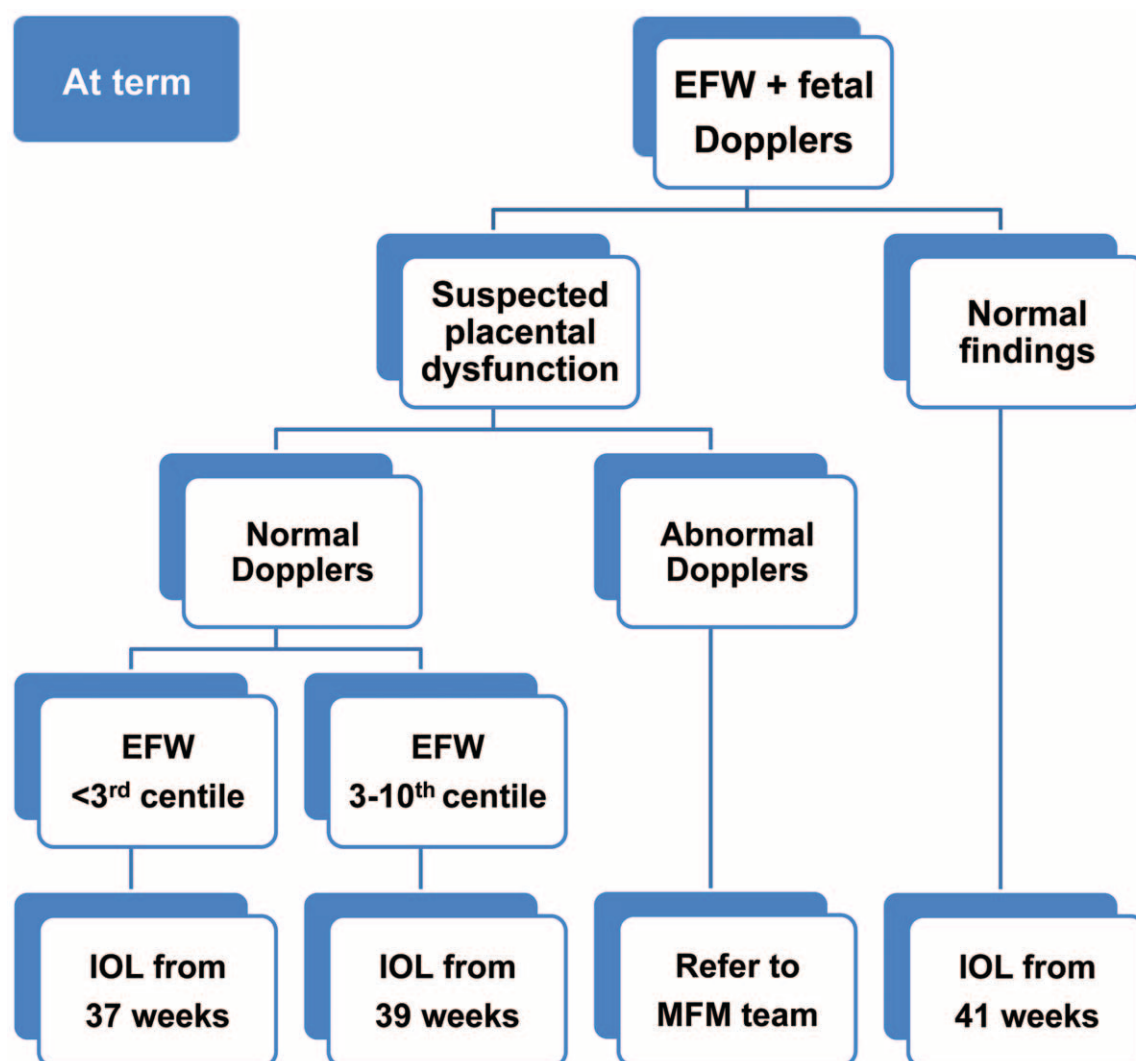
As compared to late-onset FGR, early-onset FGR is less frequent (0.5%–1.0% *vs.* 5%–10%), is more often associated with PE and presents with a higher weight deficit and more frequent abnormal fetal Doppler indices. Both early- and late-onset FGR are associated with significant perinatal morbidity and mortality, but early-onset FGR fetuses have more severe hypoxia resulting in high morbidity and mortality rates.<sup>21,34,45,46</sup> Early and late-onset FGR are two different presentations of the same disease—placental dysfunction. This can be explained by the changes in fetal nutritional and respiratory demands with advancing gestational age. Nutritional requirements follow a logarithmic increase throughout pregnancy, whereas there is an exponential rise in fetal respiratory demands with advancing gestation (Fig. 6).<sup>34,47,48</sup> Therefore, early-onset placental dysfunction has a predominant effect on fetal growth before compromising respiratory needs, resulting with fetal stunting as a key feature of the disorder. With early-onset FGR, low fetal respiratory

needs can be sustained for several weeks by the dysfunctional placenta. In contrast, late-onset FGR develops at a time when respiratory demands are maximal and nutritional demands have reached a plateau. As a consequence, late-onset FGR will have a major impact on respiratory function before it will affect fetal growth. Hypoxemia will thus develop in a fetus with a falsely reassuring “appropriate size” for gestational age, and may confer an increased risk of stillbirth from hypoxemia in a matter of hours or days. Placental dysfunction can thus present early with SGA from malnutrition evolving over days/weeks or late with stillbirth from acute hypoxemia.

### Management of FGR

#### Early-onset FGR

Screening for early-onset PE and FGR can be achieved by the first-trimester FMF combined algorithm. In the Trial of Randomized Umbilical and Fetal Flow in Europe study,



**Figure 7.** Recommendation of the National Health Service in the UK published in the 2<sup>nd</sup> version of the Saving Babies Lives Care Bundle to detect placental dysfunction and guide decisions about timing of birth based on estimated fetal weight (EFW) and fetal Dopplers assessment at term. EFW: Estimated fetal weight; IOL: Induction of labor; MFM: Maternal-Fetal Medicine.



the management of early-onset FGR diagnosed between 26 and 32 weeks' gestation was based on a combination of both computerized cardiotocography and fetal umbilical and ductus venosus Doppler assessment to guide decision about timing of birth.<sup>49</sup> The authors demonstrated a 95% survival without neurological impairment at 2 years of age when the decision to deliver was based on the combination of computerized cardiotocography and/or late ductus venosus changes—mandating the use of this approach for early-onset FGR.<sup>50</sup>

### Late-onset FGR

If the first-trimester FMF combined algorithm can detect the majority of early-onset FGR, there is no equivalent screening tool for late-onset FGR.<sup>21</sup> The main challenges near term are (1) to differentiate constitutionally small fetuses from growth restricted fetuses affected by placental dysfunction among the cohort of SGA babies (reduce false-positives) and (2) to identify normal-sized fetuses affected by placental dysfunction (reduce false-negatives). It has been demonstrated that a low cerebroplacental ratio in the third-trimester is an independent predictor of stillbirth and adverse perinatal outcome,<sup>51–53</sup> but its efficacy to improve the prediction of adverse perinatal outcome in routine antenatal care remains unascertained.<sup>21,52,54</sup> Serum biomarkers such as placental growth factor and soluble fms-like tyrosine kinase-1 are widely used to predict and diagnose PE,<sup>55,56</sup> but their routine assessment at 35–37 weeks' gestation has shown a poor performance to predict adverse pregnancy outcomes in both SGA and appropriate for gestational age fetuses.<sup>57</sup>

It is likely that new algorithms combining maternal risk factors, EFW, maternal and fetal Dopplers, and/or serum biomarkers might improve the detection rate of stillbirth and FGR near term.<sup>58</sup> An example of such an approach was proposed by Akolekar *et al.* In their study of 45,000 singleton pregnancies, they stratified fetuses into four categories of risk based on a third-trimester scan assessment of EFW, uterine, umbilical, and middle cerebral artery Dopplers.<sup>59</sup> The first step identified very low-risk fetuses with an EFW  $\geq 40^{\text{th}}$  percentile, then the second step discriminated between three categories of risk (high, intermediate, and low) for fetuses with an EFW  $< 40^{\text{th}}$  percentile. The frequency of subsequent pregnancy monitoring was tailored in line with those four risk categories. This approach showed a better performance than an EFW  $< 10^{\text{th}}$  percentile alone to predict adverse perinatal outcome. In the absence of definitive evidence for EFW and Doppler parameters assessment, several international societies have taken a pragmatic approach to their use in the management of late-onset FGR. An example of such guidance is the Saving Babies Lives Care Bundle version 2 recommendations in the UK. Saving Babies Lives Care Bundle version 2 recommends birth from 37 weeks, 39 weeks, 41 weeks or specialist Maternal-Fetal Medicine referral based on findings from EFW and Doppler assessment at term (Fig. 7).<sup>60</sup>

### Conclusion

Placental dysfunction is the major cause of antepartum stillbirth. It has been demonstrated that screening for

pregnancies at high-risk for early-onset placental dysfunction can be successfully achieved by the first-trimester FMF combined algorithm. Stillbirth, PE and FGR have to date been treated as distinct diseases rather than as outcomes of predominantly a single disorder—placental dysfunction. It is therefore not surprising that management of pregnancies at high-risk of placental dysfunction with Aspirin therapy, serial ultrasound monitoring, and elective birth at 40 weeks is associated with improved pregnancy outcomes for preterm PE, SGA birth, and stillbirth. Early-onset FGR can be easily diagnosed by the ultrasound estimation of fetal weight and its prognosis can be improved by a combination of both computerized cardiotocography and fetal Doppler assessment to guide decision about timing of birth. In late-onset FGR, the relationship between birthweight and the risk of stillbirth weakens with advancing gestational age because of the divergent increase in nutritional versus metabolic demands of the fetus. The evidence presented in this review demonstrates that screening algorithms for late-onset FGR should not be limited to ultrasound estimation of fetal weight, but also include maternal Dopplers and maternal serum biomarkers of placental dysfunction as well as fetal Doppler indices of hypoxaemia to achieve better pregnancy outcomes.

### Funding

None.

### Conflicts of Interest

None.

### References

- [1] Ota E, da Silva Lopes K, Middleton P, et al. Antenatal interventions for preventing stillbirth, fetal loss and perinatal death: an overview of Cochrane systematic reviews. *Cochrane Database Syst Rev* 2020;12(12):Cd009599. doi:10.1002/14651858.CD009599.pub2.
- [2] Lawn JE, Blencowe H, Waiswa P, et al. Stillbirths: rates, risk factors, and acceleration towards 2030. *Lancet* 2016;387(10018):587–603. doi:10.1016/S0140-6736(15)00837-5.
- [3] Ashoor G, Syngelaki A, Papastefanou I, et al. Development and validation of model for prediction of placental dysfunction-related stillbirth from maternal factors, fetal weight and uterine artery Doppler at mid-gestation. *Ultrasound Obstet Gynecol* 2022;59(1):61–68. doi:10.1002/uog.24795.
- [4] Poon LC, Volpe N, Muto B, et al. Birthweight with gestation and maternal characteristics in live births and stillbirths. *Fetal Diagn Ther* 2012;32(3):156–165. doi:10.1159/000338655.
- [5] Poon LC, Tan MY, Yerlikaya G, et al. Birth weight in live births and stillbirths. *Ultrasound Obstet Gynecol* 2016;48(5):602–606. doi:10.1002/uog.17287.
- [6] Antenatal care for uncomplicated pregnancies. London: National Institute for Health and Care Excellence (NICE); February 2019.
- [7] ACOG Committee Opinion No. 743: Low-Dose Aspirin Use During Pregnancy. *Obstet Gynecol* 2018;132(1):e44–e52. doi:10.1097/AOG.0000000000002708.
- [8] Chaemsaihong P, Sahota DS, Poon LC. First trimester preeclampsia screening and prediction. *Am J Obstet Gynecol* 2022;226(2S):S1071–S1097.e2. doi:10.1016/j.ajog.2020.07.020.
- [9] Tan MY, Wright D, Syngelaki A, et al. Comparison of diagnostic accuracy of early screening for pre-eclampsia by NICE guidelines and a method combining maternal factors and biomarkers: results of SPREE. *Ultrasound Obstet Gynecol* 2018;51(6):743–750. doi:10.1002/uog.19039.

- [10] Poon LC, Wright D, Thornton S, et al. Mini-combined test compared with NICE guidelines for early risk-assessment for pre-eclampsia: the SPREE diagnostic accuracy study. Southampton (UK): NIHR Journals Library; November 2020.
- [11] O’Gorman N, Wright D, Poon LC, et al. Multicenter screening for pre-eclampsia by maternal factors and biomarkers at 11-13 weeks’ gestation: comparison with NICE guidelines and ACOG recommendations [published correction appears in *Ultrasound Obstet Gynecol* 2017;50(6):807]. *Ultrasound Obstet Gynecol* 2017;49(6):756–760. doi:10.1002/uog.17455.
- [12] Tan MY, Syngelaki A, Poon LC, et al. Screening for pre-eclampsia by maternal factors and biomarkers at 11-13 weeks’ gestation. *Ultrasound Obstet Gynecol* 2018;52(2):186–195. doi:10.1002/uog.19112.
- [13] Meertens L, Scheepers H, van Kuijk S, et al. External validation and clinical usefulness of first trimester prediction models for the risk of preeclampsia: a prospective cohort study. *Fetal Diagn Ther* 2019;45(6):381–393. doi:10.1159/000490385.
- [14] Rolnik DL, Wright D, Poon LC, et al. Aspirin versus placebo in pregnancies at high risk for preterm preeclampsia. *N Engl J Med* 2017;377(7):613–622. doi:10.1056/NEJMoa1704559.
- [15] Tan MY, Poon LC, Rolnik DL, et al. Prediction and prevention of small-for-gestational-age neonates: evidence from SPREE and ASPRE. *Ultrasound Obstet Gynecol* 2018;52(1):52–59. doi:10.1002/uog.19077.
- [16] Rolnik DL, Wright D, Poon L, et al. ASPRE trial: performance of screening for preterm pre-eclampsia. *Ultrasound Obstet Gynecol* 2017;50(4):492–495. doi:10.1002/uog.18816.
- [17] Wright D, Nicolaides KH. Aspirin delays the development of preeclampsia. *Am J Obstet Gynecol* 2019;220(6):580.e1–580.e6. doi:10.1016/j.ajog.2019.02.034.
- [18] Guy GP, Leslie K, Diaz Gomez D, et al. Implementation of routine first trimester combined screening for pre-eclampsia: a clinical effectiveness study. *BJOG* 2021;128(2):149–156. doi:10.1111/1471-0528.16361.
- [19] Guy GP, Leslie K, Diaz Gomez D, et al. Effect of routine first-trimester combined screening for pre-eclampsia on small-for-gestational-age birth: secondary interrupted time series analysis. *Ultrasound Obstet Gynecol* 2022;59(1):55–60. doi:10.1002/uog.23741.
- [20] Liu B, Nadeem U, Frick A, et al. Reducing health inequality in Black, Asian and other minority ethnic pregnant women: impact of first trimester combined screening for placental dysfunction on perinatal mortality [published online ahead of print, 2022 Feb 1]. *BJOG* 2022;doi:10.1111/1471-0528.17109.
- [21] Figueras F, Caradeux J, Crispi F, et al. Diagnosis and surveillance of late-onset fetal growth restriction. *Am J Obstet Gynecol* 2018;218(2S):S790–S802.e1. doi:10.1016/j.ajog.2017.12.003.
- [22] Townsend R, Manji A, Allotey J, et al. Can risk prediction models help us individualise stillbirth prevention? A systematic review and critical appraisal of published risk models. *BJOG* 2021;128(2):214–224. doi:10.1111/1471-0528.16487.
- [23] Sexton J, Ellwood D, Flenady V. Challenges in developing prediction models for stillbirth. *BJOG* 2021;128(2):251. doi:10.1111/1471-0528.16525.
- [24] Allotey J, Whittle R, Snell K, et al. External validation of prognostic models to predict stillbirth using International Prediction of Pregnancy Complications (IPPIC) Network database: individual participant data meta-analysis. *Ultrasound Obstet Gynecol* 2022;59(2):209–219. doi:10.1002/uog.23757.
- [25] Ciobanu A, Rouvali A, Syngelaki A, et al. Prediction of small for gestational age neonates: screening by maternal factors, fetal biometry, and biomarkers at 35-37 weeks’ gestation. *Am J Obstet Gynecol* 2019;220(5):486.e1–486.e11. doi:10.1016/j.ajog.2019.01.227.
- [26] Vasak B, Koenen SV, Koster MP, et al. Human fetal growth is constrained below optimal for perinatal survival. *Ultrasound Obstet Gynecol* 2015;45(2):162–167. doi:10.1002/uog.14644.
- [27] ACOG practice bulletin no. 204: fetal growth restriction. *Obstet Gynecol* 2019;133(2):e97–e109. doi:10.1097/AOG.0000000000003070.
- [28] Henrichs J, Verfaillie V, Jellema P, et al. Effectiveness of routine third trimester ultrasonography to reduce adverse perinatal outcomes in low risk pregnancy (the IRIS study): nationwide, pragmatic, multicentre, stepped wedge cluster randomised trial. *BMJ* 2019;367:l5517. doi:10.1136/bmj.l5517.
- [29] Sharp A, Duong C, Agarwal U, et al. Screening and management of the small for gestational age fetus in the UK: a survey of practice. *Eur J Obstet Gynecol Reprod Biol* 2018;231:220–224. doi:10.1016/j.ejogrb.2018.10.039.
- [30] Hadlock FP, Harrist RB, Sharman RS, et al. Estimation of fetal weight with the use of head, body, and femur measurements—a prospective study. *Am J Obstet Gynecol* 1985;151(3):333–337. doi:10.1016/0002-9378(85)90298-4.
- [31] Khalil A, D’Antonio F, Dias T, et al. Ultrasound estimation of birth weight in twin pregnancy: comparison of biometry algorithms in the STORK multiple pregnancy cohort. *Ultrasound Obstet Gynecol* 2014;44(2):210–220. doi:10.1002/uog.13253.
- [32] Hammami A, Mazer Zumaeta A, Syngelaki A, et al. Ultrasonographic estimation of fetal weight: development of new model and assessment of performance of previous models. *Ultrasound Obstet Gynecol* 2018;52(1):35–43. doi:10.1002/uog.19066.
- [33] Salomon LJ, Alfrevic Z, Da Silva Costa F, et al. ISUOG Practice Guidelines: ultrasound assessment of fetal biometry and growth. *Ultrasound Obstet Gynecol* 2019;53(6):715–723. doi:10.1002/uog.20272.
- [34] Halimeh R, Melchiorre K, Thilaganathan B. Preventing term stillbirth: benefits and limitations of using fetal growth reference charts. *Curr Opin Obstet Gynecol* 2019;31(6):365–374. doi:10.1097/GCO.0000000000000576.
- [35] Papageorgiou AT, Kennedy SH, Salomon LJ, et al. The INTERGROWTH-21(st) fetal growth standards: toward the global integration of pregnancy and pediatric care. *Am J Obstet Gynecol* 2018;218(2S):S630–S1630. doi:10.1016/j.ajog.2018.01.011.
- [36] Nicolaides KH, Wright D, Syngelaki A, et al. Fetal medicine foundation fetal and neonatal population weight charts. *Ultrasound Obstet Gynecol* 2018;52(1):44–51. doi:10.1002/uog.19073.
- [37] Kiserud T, Piaggio G, Carroli G, et al. The World Health Organization fetal growth charts: a multinational longitudinal study of ultrasound biometric measurements and estimated fetal weight. *PLoS Med* 2017;14(1):e1002220. doi:10.1371/journal.pmed.1002220.
- [38] Villar J, Cheikh Ismail L, Victora CG, et al. International standards for newborn weight, length, and head circumference by gestational age and sex: the newborn cross-sectional study of the INTERGROWTH-21st project. *Lancet* 2014;384(9946):857–868. doi:10.1016/S0140-6736(14)60932-6.
- [39] Francis A, Hugh O, Gardosi J. Customized vs INTERGROWTH-21(st) standards for the assessment of birthweight and stillbirth risk at term. *Am J Obstet Gynecol* 2018;218(2S):S692–S1692. doi:10.1016/j.ajog.2017.12.013.
- [40] Iliodromiti S, Smith G, Lawlor DA, et al. UK stillbirth trends in over 11 million births provide no evidence to support effectiveness of Growth Assessment Protocol program. *Ultrasound Obstet Gynecol* 2020;55(5):599–604. doi:10.1002/uog.21999.
- [41] Ciobanu A, Formoso C, Syngelaki A, et al. Prediction of small-for-gestational-age neonates at 35-37 weeks’ gestation: contribution of maternal factors and growth velocity between 20 and 36 weeks. *Ultrasound Obstet Gynecol* 2019;53(4):488–495. doi:10.1002/uog.20243.
- [42] Stampalija T, Thornton J, Marlow N, et al. Fetal cerebral Doppler changes and outcome in late preterm fetal growth restriction: prospective cohort study. *Ultrasound Obstet Gynecol* 2020;56(2):173–181. doi:10.1002/uog.22125.
- [43] Man J, Hutchinson JC, Ashworth M, et al. Effects of intrauterine retention and postmortem interval on body weight following intrauterine death: implications for assessment of fetal growth restriction at autopsy. *Ultrasound Obstet Gynecol* 2016;48(5):574–578. doi:10.1002/uog.16018.
- [44] Gordijn SJ, Beune IM, Thilaganathan B, et al. Consensus definition of fetal growth restriction: a Delphi procedure. *Ultrasound Obstet Gynecol* 2016;48(3):333–339. doi:10.1002/uog.15884.
- [45] Figueras F, Gratacos E. An integrated approach to fetal growth restriction. *Best Pract Res Clin Obstet Gynaecol* 2017;38:48–58. doi:10.1016/j.bpobgyn.2016.10.006.
- [46] Coutinho CM, Melchiorre K, Thilaganathan B. Stillbirth at term: does size really matter? *Int J Gynaecol Obstet* 2020;150(3):299–305. doi:10.1002/ijgo.13229.
- [47] Thilaganathan B. Ultrasound fetal weight estimation at term may do more harm than good. *Ultrasound Obstet Gynecol* 2018;52(1):5–8. doi:10.1002/uog.19110.

- [48] Dunsworth HM, Warrener AG, Deacon T, et al. Metabolic hypothesis for human altriciality. *Proc Natl Acad Sci U S A* 2012;109(38):15212–15216. doi:10.1073/pnas.1205282109.
- [49] Bilardo CM, Hecher K, Visser G, et al. Severe fetal growth restriction at 26–32 weeks: key messages from the TRUFFLE study. *Ultrasound Obstet Gynecol* 2017;50(3):285–290. doi:10.1002/uog.18815.
- [50] Lees CC, Marlow N, van Wassenaeer-Leemhuis A, et al. 2 year neurodevelopmental and intermediate perinatal outcomes in infants with very preterm fetal growth restriction (TRUFFLE): a randomised trial. *Lancet* 2015;385(9983):2162–2172. doi:10.1016/S0140-6736(14)62049-3.
- [51] Khalil A, Morales-Roselló J, Townsend R, et al. Value of third-trimester cerebroplacental ratio and uterine artery Doppler indices as predictors of stillbirth and perinatal loss. *Ultrasound Obstet Gynecol* 2016;47(1):74–80. doi:10.1002/uog.15729.
- [52] Vollgraff Heidweiller-Schreurs CA, De Boer MA, Heymans MW, et al. Prognostic accuracy of cerebroplacental ratio and middle cerebral artery Doppler for adverse perinatal outcome: systematic review and meta-analysis. *Ultrasound Obstet Gynecol* 2018;51(3):313–322. doi:10.1002/uog.18809.
- [53] Rizzo G, Mappa I, Bitsadze V, et al. Role of Doppler ultrasound at time of diagnosis of late-onset fetal growth restriction in predicting adverse perinatal outcome: prospective cohort study. *Ultrasound Obstet Gynecol* 2020;55(6):793–798. doi:10.1002/uog.20406.
- [54] Akolekar R, Ciobanu A, Zingler E, et al. Routine assessment of cerebroplacental ratio at 35–37 weeks' gestation in the prediction of adverse perinatal outcome. *Am J Obstet Gynecol* 2019;221(1):65.e1–65.e18. doi:10.1016/j.ajog.2019.03.002.
- [55] Zeisler H, Llurba E, Chantraine F, et al. Predictive value of the sFlt-1:PIGF ratio in women with suspected preeclampsia. *N Engl J Med* 2016;374(1):13–22. doi:10.1056/NEJMoa1414838.
- [56] Duhig KE, Myers J, Seed PT, et al. Placental growth factor testing to assess women with suspected pre-eclampsia: a multicentre, pragmatic, stepped-wedge cluster-randomised controlled trial. *Lancet* 2019;393(10183):1807–1818. doi:10.1016/S0140-6736(18)33212-4.
- [57] Ciobanu A, Jabak S, De Castro H, et al. Biomarkers of impaired placentation at 35–37 weeks' gestation in the prediction of adverse perinatal outcome. *Ultrasound Obstet Gynecol* 2019;54(1):79–86. doi:10.1002/uog.20346.
- [58] Khalil A, Thilaganathan B. Role of uteroplacental and fetal Doppler in identifying fetal growth restriction at term. *Best Pract Res Clin Obstet Gynaecol* 2017;38:38–47. doi:10.1016/j.bpobgyn.2016.09.003.
- [59] Akolekar R, Panaitescu AM, Ciobanu A, et al. Two-stage approach for prediction of small-for-gestational-age neonate and adverse perinatal outcome by routine ultrasound examination at 35–37 weeks' gestation. *Ultrasound Obstet Gynecol* 2019;54(4):484–491. doi:10.1002/uog.20391.
- [60] NHS-England. Saving Babies' Lives Version Two: A care bundle for reducing perinatal mortality. First published 15 March 2019 Last updated 16 September 2020; Available from: <https://www.england.nhs.uk/publication/saving-babies-lives-version-two-a-care-bundle-for-reducing-perinatal-mortality/>. Accessed date: March 30th, 2022.

Edited By Yiyuan Jiang and Dandan Shi

---

**How to cite this article:** Noël L, Coutinho CM, Thilaganathan B. Preventing Stillbirth: A Review of Screening and Prevention Strategies. *Maternal Fetal Med* 2022;4(3):218–228. doi: 10.1097/FM9.0000000000000160.