



A Loop-Mediated Isothermal Amplification (LAMP) Assay for Early Detection of *Schistosoma mansoni* in Stool Samples: A Diagnostic Approach in a Murine Model

Pedro Fernández-Soto*, Javier Gandasegui Arahetes, Alicia Sánchez Hernández, Julio López Abán, Belén Vicente Santiago, Antonio Muro

IBSAL-CIETUS (Instituto de Investigación Biomédica de Salamanca-Centro de Investigación de Enfermedades Tropicales de la Universidad de Salamanca), Facultad de Farmacia, Universidad de Salamanca, Salamanca, Spain

Abstract

Background: Human schistosomiasis, mainly due to *Schistosoma mansoni* species, is one of the most prevalent parasitic diseases worldwide. To overcome the drawbacks of classical parasitological and serological methods in detecting *S. mansoni* infections, especially in acute stage of the disease, development of cost-effective, simple and rapid molecular methods is still needed for the diagnosis of schistosomiasis. A promising approach is the loop-mediated isothermal amplification (LAMP) technology. Compared to PCR-based assays, LAMP has the advantages of reaction simplicity, rapidity, specificity, cost-effectiveness and higher amplification efficiency. Additionally, as results can be inspected by the naked eye, the technique has great potential for use in low-income countries.

Methodology/Principal findings: A sequence corresponding to a mitochondrial *S. mansoni* minisatellite DNA region was selected as a target for designing a LAMP-based method to detect *S. mansoni* DNA in stool samples. We used a *S. mansoni* murine model to obtain well defined stool and sera samples from infected mice with *S. mansoni* cercariae. Samples were taken weekly from week 0 to 8 post-infection and the Kato-Katz and ELISA techniques were used for monitoring the infection. Primer set designed were tested using a commercial reaction mixture for LAMP assay and an *in house* mixture to compare results. Specificity of LAMP was tested using 16 DNA samples from different parasites, including several *Schistosoma* species, and no cross-reactions were found. The detection limit of our LAMP assay (SmMIT-LAMP) was 1 fg of *S. mansoni* DNA. When testing stool samples from infected mice the SmMIT-LAMP detected *S. mansoni* DNA as soon as 1 week post-infection.

Conclusions/Significance: We have developed, for the first time, a cost-effective, easy to perform, specific and sensitive LAMP assay for early detection of *S. mansoni* in stool samples. The method is potentially and readily adaptable for field diagnosis and disease surveillance in schistosomiasis-endemic areas.

Citation: Fernández-Soto P, Gandasegui Arahetes J, Sánchez Hernández A, López Abán J, Vicente Santiago B, et al. (2014) A Loop-Mediated Isothermal Amplification (LAMP) Assay for Early Detection of *Schistosoma mansoni* in Stool Samples: A Diagnostic Approach in a Murine Model. PLoS Negl Trop Dis 8(9): e3126. doi:10.1371/journal.pntd.0003126

Editor: Aaron R. Jex, University of Melbourne, Australia

Received: April 22, 2014; **Accepted:** July 18, 2014; **Published:** September 4, 2014

Copyright: © 2014 Fernández-Soto et al. This is an open-access article distributed under the terms of the Creative Commons Attribution License, which permits unrestricted use, distribution, and reproduction in any medium, provided the original author and source are credited.

Data Availability: The authors confirm that all data underlying the findings are fully available without restriction. All relevant data are within the paper and its Supporting Information files.

Funding: This work was supported by Real Federación Española de Fútbol-Sociedad Española de Medicina Tropical y Salud Internacional, 2013 (RFEF-SEMTSI, 2013) and by Junta de Castilla y León (Ref. no. SA342U13). The funders had no role in study design, data collection and analysis, decision to publish, or preparation of the manuscript.

Competing Interests: The authors have declared that no competing interests exist.

* Email: pfsoto@usal.es

Introduction

Schistosomiasis, a disease caused by parasitic worms of several species of genus *Schistosoma*, is one of the 17 neglected tropical diseases (NTDs) recognized by World Health Organization (WHO) [1]. Presently, human schistosomiasis, mainly caused by *Schistosoma mansoni* species, is one of the most widespread of all human parasitic diseases, ranking second only to malaria in terms of its socioeconomic and public health importance in developing countries in tropical and subtropical areas, especially in Sub-Saharan Africa. The disease is endemic in 74 countries infecting more than 200 million people worldwide, with 732 million people

at risk of infection in known transmission areas [2], [3], [4]. On a global scale, one of thirty individuals has schistosomiasis [5]. It is also noted that the prevalence of imported schistosomiasis is increasingly a problem in non-endemic areas due to the growing number of international travelers to endemic areas, expatriates and immigrants from endemic countries [6], [7], [8].

Over time, several diagnostic techniques including parasitological and immunological methods have been tested for diagnosis of schistosome infection. As is well known, traditional parasitological methods, such as Kato-Katz assay for counting eggs in feces, are relatively inexpensive and easy to perform providing basic information on prevalence and infection intensity. However, a

Author Summary

Schistosomiasis is one of the most widespread of all human parasitic diseases, *Schistosoma mansoni* being the most important species causing human intestinal schistosomiasis. The diagnosis of the disease is mainly based on parasitological and serological methods, but they are not effective in detecting *S. mansoni* infections in the acute stage of the disease. New diagnostic tools to detect the disease during the first weeks would be desirable, permitting early treatment and preventing the pathology associated with chronic infections. An approach is the loop-mediated isothermal amplification (LAMP) technique, which can amplify DNA with high specificity and sensitivity under isothermal conditions. DNA amplification and reading of results require minimum equipment, thus the technique has great potential for use in diagnosis of neglected tropical diseases. In our study, we developed and evaluated a LAMP assay for the early detection of *S. mansoni* DNA in stool samples from mice experimentally infected with the parasite. The results indicated that our LAMP assay is specific, sensitive and cost-effective in detecting *S. mansoni* DNA in stool samples as soon as one week post-infection, when parasitological and serological methods are not effective. The assay has the potential to be developed further as a field diagnostic tool for use in schistosomiasis-endemic areas.

major limitation of these methods is their lack in sensitivity, especially in low-grade infections, as occurs in areas of low prevalence or in individuals with recent infections [9]. In addition, they are cannot be carried out in the acute phase of schistosomiasis since parasite has not started yet to lay eggs. When parasites cannot be directly detected, the immunological methods are usually applied to patients with schistosomiasis clinical signs. However, serology-based analyses currently continue to present problems, such as obtaining schistosome antigens, inability to discriminate between current or previous infection, high level of cross reactivity as well as persistence of antigens and antibodies after chemotherapy usually causing false positive results [10]. To overcome the shortcomings of both parasitological and immunological diagnostic methods, the development of new, more sensitive and specific molecular diagnostic tools for the diagnosis of schistosomiasis are desirable. In recent years, several studies have reported the application of polymerase chain reaction (PCR)-based assays for high sensitive and specific detection of *Schistosoma* spp. DNA in human clinical samples, such as feces [11], [12], [13], [14], [15], sera [11], plasma [16] and urine [17]. Even though these studies have demonstrated that PCR-based technologies provided reliable, specific and sensitive tools, they are not still widely used in low-income countries because highly skilled personnel and expensive cyclers are needed. Therefore, the development of cost-effective, simple and rapid detection methods is still needed for the diagnosis of schistosomiasis.

An interesting alternative to PCR-based technologies is a molecular technique named loop-mediated isothermal amplification (LAMP). This assay is a one-step amplification reaction that amplifies a target DNA with high specificity, efficiency and rapidly under isothermal conditions [18]. LAMP employs a DNA polymerase (*Bst* polymerase) with strand-displacement activity, along with two inner primers (FIP, BIP) and two outer primers (F3, B3) which recognize six separate regions within a target DNA. The auto-cycling reactions lead to accumulation of a large amount of the target DNA and other reaction by-products, such as magnesium pyrophosphate, that allow rapid visual detection and

real-time measurement of turbidity [19] or visual fluorescence in the presence of fluorescent intercalating dyes [20]. Moreover, as LAMP assay is an isothermal amplification method it does not require an expensive cycler and can be performed in economical heating blocks or water baths. On this basis, simple heating methods, such as chemical heaters or thermal bottles, have been recently designed for removing the dependence upon stable electricity and allowing for LAMP to be conducted at any time in any setting [21], [22], [23], [24]. Thus, LAMP assay has all the characteristics required of realtime assays along with simple operation for easy adaptability to field conditions.

Since the LAMP assay was first reported [18], many LAMP reactions have been developed for molecular detection and diagnostics of bacterial, viral, fungal and parasitic diseases in both animals and plants [25] and their performance observed by comparing to molecular techniques, such as PCR, in order to evaluate the feasibility of LAMP technology [26], [27].

As recently reviewed by Mori et al [28], of the 17 NTDs recognized by WHO, 14 have been studied using LAMP assay, including schistosomiasis caused by *S. japonicum* in experimentally infected rabbits to evaluate the technique for early diagnosis and efficacy of chemotherapy [29], [30]. Other successfully approaches for LAMP assay to be used for *Schistosoma* spp. detection have been mainly focused in field settings for monitoring infected snails with *S. mansoni*, *S. haematobium* [31], [32] and *S. japonicum* [33], [34].

Thus, with the aim to improve in developing new, applicable and cost-effective molecular tools for the diagnosis of schistosomiasis, in our work we have developed a LAMP assay for early specific detection of *S. mansoni* in mice stool samples. In the present study, specific LAMP primer set designed was tested using different reaction mixtures each containing different *Bst* polymerases to compare results and cost-effectiveness. We also evaluated the sensitivity of the LAMP assay in comparison with classical diagnostic techniques, such as Kato-Katz and ELISA. To the best of our knowledge, this is the first report using LAMP assay for early diagnosis of active schistosomiasis in mice stool samples.

Methods

Ethics statement

The study protocol was approved by the institutional research commission of the University of Salamanca. Ethical approval was obtained from the Ethics Committee of the University of Salamanca (protocol approval number 48531), which approved the animal protocol. Animal procedures in this study complied with the Spanish (Real Decreto RD53/2013) and the European Union (European Directive 2010/63/EU) guidelines on animal experimentation for the protection and humane use of laboratory animals and were conducted at the accredited Animal Experimentation Facility (Servicio de Experimentación Animal) of the University of Salamanca (Register number: PAE/SA/001).

Mice and *Schistosoma mansoni* experimental infection

Six to seven-week old female CD1 mice weighing 16–24 g (Charles River Laboratories, Barcelona, Spain) were used in the study as the source for blood and stool samples. Animals were housed at the accredited Animal Experimentation Facility of the University of Salamanca in standard polycarbonate cages and placed in humidity and temperature controlled environment with a 12 hour photoperiod and received sterilized food and water *ad libitum*. Mice were each infected with 200 *S. mansoni* cercariae which were obtained from *Biomphalaria glabrata* snails previously infected with *S. mansoni* miracidia as described elsewhere [35].

The infection was carried out following the methodology previously described by Smithers et al [36]. Uninfected mice (control group) were used as source for negative samples. All mice blood and stool samples were taken weekly from week 0 to week 8 post-infection (p.i.). Animals were monitored regularly by qualified members in animal welfare at the Animal Experimentation Facility of the University of Salamanca. Infected mice were humanely euthanised by intraperitoneal injection with pentobarbital at a 60 mg/Kg dose using 30 g needles at week 8 p.i.

Mice samples and monitoring infection by Kato-Katz and ELISA

A total of 90 stool samples and 90 blood samples were taken from all mice throughout infection. Five stool samples as well as five blood samples were taken weekly and processed from both infected and uninfected mice groups from week 0 to week 8 p.i. Feces weekly obtained from each infected mouse was divided into two portions: one was immediately processed and examined by triplicate for counting eggs using the Kato-Katz technique [37] in a conventional microscope and another was stored at -20°C to be used afterward for DNA extraction for molecular assays. The Kato-Katz technique was used as the *gold standard* assay to pre-determine the existence of *S. mansoni* infection in stool samples. Results obtained were expressed as $\text{mean} \pm \text{SE}$. Feces weekly obtained from each non-infected mouse were kept frozen individually until DNA extraction as mentioned below.

After collection of the whole blood from each mouse in a defined time-point p.i., the sera samples were obtained by allowing the blood to clot for 15–30 minutes at room temperature and removing the clot by centrifuging at $1,000\text{--}2,000 \times g$ for 10 minutes in a refrigerated centrifuge. The resulting supernatants were immediately transferred into a clean tube and stored at -20°C until use for the evaluation of specific humoral immune response by ELISA for IgG detection. Firstly, soluble somatic extracts from adult *S. mansoni* worms (SmAg) were obtained and determined protein concentration as previously described [38]. Briefly, polystyrene microtiter plates (Costar, USA) were coated with $100 \mu\text{L}$ /well of SmAg at a protein concentration of $5 \mu\text{g}/\text{mL}$ diluted in carbonate buffer (pH 9.6). Diluted serum at 1:100 was added to the wells and incubated for 1 h at 37°C . Horseradish peroxidase rabbit anti-mouse IgG (Sigma, USA) 1:2000 was added. Washes were carried out three times with $200 \mu\text{L}$ of PBS-Tween 20/well. After incubation for 1 h at 37°C , substrate solution (ortho phenylene diamine+ H_2O) was added and the reaction was stopped after 10 min with $3 \text{ N H}_2\text{SO}_4$. Sera, tested by duplicate, were considered positive when the OD value exceeded the $\text{mean} \pm 2 \text{ SE}$ absorbance of sera from non-infected animals.

DNA extraction for molecular analyses

DNA from mice stool samples. Approximately 220–250 mg of frozen stool samples from each mouse were used for DNA extraction using the NucleoSpin Tissue Kit (Macherey-Nagel, GmbH & Co., Germany) -according to the modified protocol for DNA extraction from stool- following the manufacturers' instructions. DNA samples obtained from feces from non-infected mice were pooled and the resulting mix was treated as a single negative control sample to minimize the number of subsequent reactions.

Parasites DNA samples. *S. mansoni* DNA was extracted from frozen adult worms available in our laboratory using NucleoSpin Tissue (Macherey-Nagel, Germany) following the manufacturers' instructions. The concentration of *S. mansoni* DNA adult worms was measured three times by spectrophotometry

using a Nanodrop ND-100 spectrophotometer (Nanodrop Technologies) to obtain an average concentration and then diluted with ultrapure water to a final concentration of $0.5 \text{ ng}/\mu\text{L}$. Subsequently, serial 10-fold dilutions from *S. mansoni* DNA thus obtained ($0.5 \text{ ng}/\mu\text{L}$) were also prepared with ultrapure water ranging from $0.05 \text{ ng}/\mu\text{L}$ to $0.0005 \text{ fg}/\mu\text{L}$ (10^{-1} to 10^{-9}) and stored at -20°C until use. DNA thus prepared was used as a positive control in all PCR and LAMP reactions as well as for assessing sensitivity of both assays.

Additionally, to determine the specificity of both PCR and LAMP assays, a total of 16 DNA samples from several helminths and protozoa were included as heterogeneous control samples. Of these samples, DNA from *Fasciola hepatica*, *Loa loa* and *Brugia pahangi* were already accessible in our laboratory. Other DNA samples were generously donated by the following: *Dicrocoelium dendriticum* and *Calicophoron daubneyi*, Y. Manga (CSIC, León, Spain); *Hymenolepis diminuta* and *Taenia taeniformis*, P. Foronda (University of La Laguna, Tenerife, Spain); *Anisakis simplex*, C. Cuéllar (UCM, Madrid, Spain) *Trichinella spiralis*, *Echinococcus granulosus*, *Cryptosporidium parvum*, *Giardia intestinalis* and *Entamoeba histolytica*, E. Rodríguez (ISCIII, Madrid, Spain) and *Schistosoma intercalatum*, A. O. Castro (CIBP-INSA, Porto, Portugal). Genomic DNA from adult male and female *Schistosoma haematobium*, Egyptian Strain, NR-31682 and genomic DNA from adult male and female *Schistosoma japonicum*, Chinese Strain, NR-36066 were obtained from the Schistosomiasis Resource Center for distribution by BEI Resources, NIAID, NIH (<https://www.beiresources.org/Collection/51/Schistosome-Resource-Centers.aspx>).

Concentration of these DNA samples was measured by the same method as described for *S. mansoni* DNA and then also diluted with ultrapure water to a final concentration of $0.5 \text{ ng}/\mu\text{L}$. In order to look for protein contaminations a common purity check by measuring the A_{260}/A_{280} ratio was made for all samples. All these DNA samples were kept at -20°C until use in molecular assays.

S. mansoni specific LAMP primers design

The first step in primers design was based on literature searches to identify potential sequences of DNA which were suspected to be used in specific detection of *S. mansoni*. Genbank sequences initially considered were tested *in silico* through BLAST searches [39] and alignment analysis. Finally, a 620 base pair (bp) sequence corresponding to a mitochondrial *S. mansoni* minisatellite DNA region was preferred and retrieved from GenBank (Accession No. L27240) [40] for the design of specific primers. Forward and backward outer primers (F3 and B3) and forward and backward inner primers (FIP: F1c-F2 and BIP: B1c-B2, respectively) were designed using the Primer Explorer V4 software (Eiken Chemical Co., Ltd., Japan; <http://primerexplorer.jp/e/>). Several LAMP primer sets were suggested by the software and further refinement in primer design was developed manually based on the criteria described in "A Guide to LAMP primer designing" (http://primerexplorer.jp/e/v4_manual/index.html). Specific LAMP primers sequences finally selected as well as their positions relative to the 620 bp target sequence are shown in Figure 1. All the primers were synthesized by Eurofins MWG Operon.

PCR using outer primers F3 and B3

The outer LAMP primer pair, designated F3 and B3, was initially tested for the amplification of *S. mansoni* DNA by a *touchdown*-PCR to verify whether the correct target was amplified. The PCR assay was conducted in $25 \mu\text{L}$ reaction mixture containing $2.5 \mu\text{L}$ of $10 \times$ buffer, $1.5 \mu\text{L}$ of $25 \text{ mmol}/\text{L}$ MgCl_2 , $2.5 \mu\text{L}$ of $2.5 \text{ mmol}/\text{L}$ dNTPs, $0.5 \mu\text{L}$ of $100 \text{ pmol}/\text{L}$ F3 and B3,

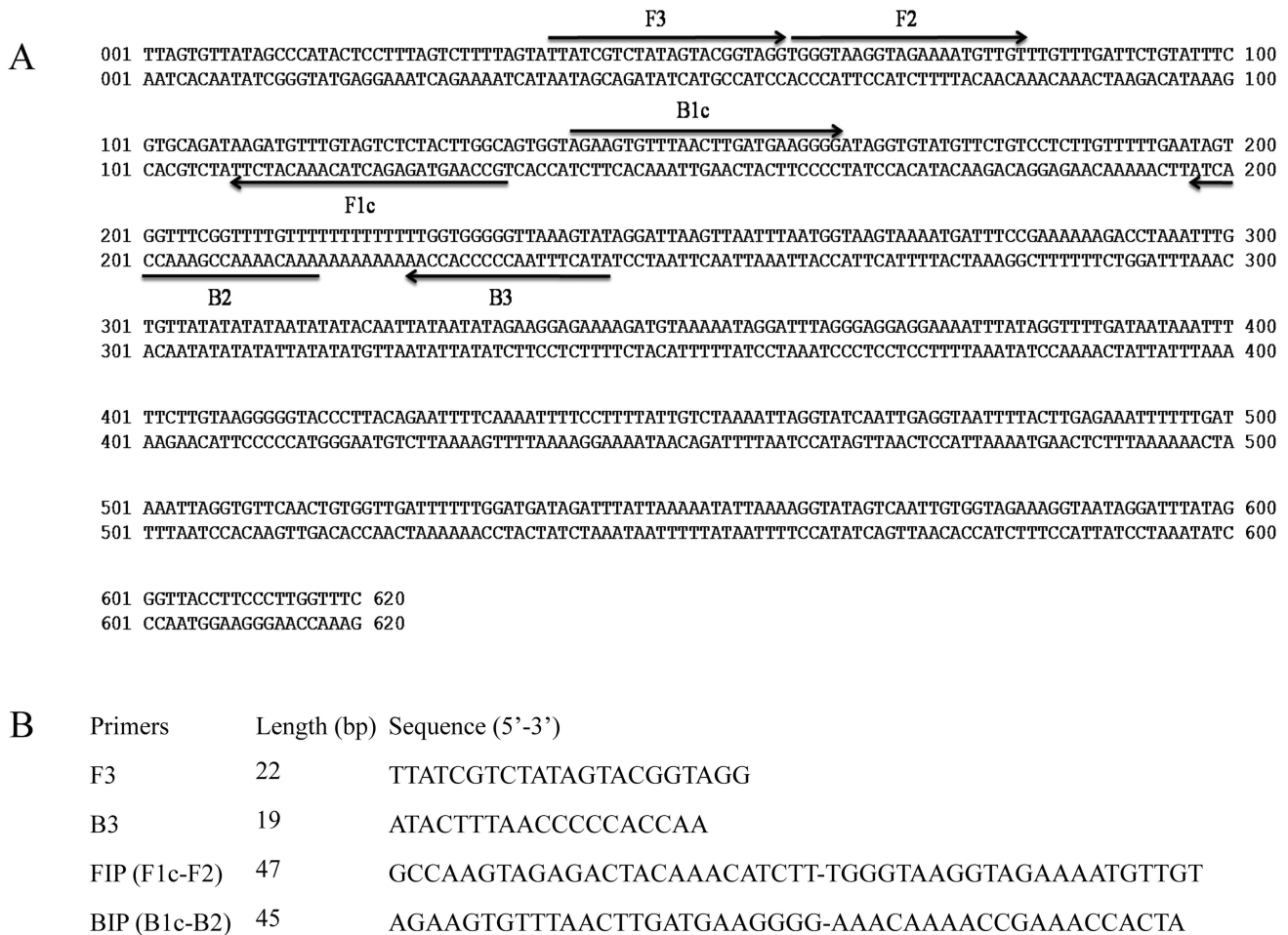


Figure 1. LAMP primer set targeting the selected sequence (GenBank Accession. No. L27240) for mitochondrial *S. mansoni* minisatellite DNA region amplification. (A) The location of the LAMP primers within the selected sequence is shown. Arrows indicate the direction of extension. (B). Sequence of LAMP primers: F3, forward outer primer; B3, reverse outer primer; FIP, forward inner primer (comprising F1c and F2 sequences); BIP, reverse inner primer (comprising B1c and B2 sequences).
doi:10.1371/journal.pntd.0003126.g001

2 U *Taq*-polymerase and 2 μ L (1 ng) of DNA template. Initial denaturation was conducted at 94°C for 1 min, followed by a touchdown program for 15 cycles with successive annealing temperature decrements of 1.0°C every 2 cycles. For these 2 cycles, the reaction was denatured at 94°C for 20 s followed by annealing at 58°C–56°C for 20 s and polymerization at 72°C for 30 s. The following 15 cycles of amplification were similar, except that the annealing temperature was 55°C. The final extension was performed at 72°C for 10 min.

The specificity of PCR using outer primers F3 and B3 was also tested with heterogeneous DNA samples from other parasites included in the study. Moreover, the sensitivity of the PCR was also assayed to establish the detection limit of *S. mansoni* DNA with 10-fold serial dilutions prepared as mentioned above. The assay was performed with 2 μ L of the diluted template in each case. Negative controls (ultrapure water instead DNA template) were included. The PCR products (3–5 μ L) were subjected to 2% agarose gel electrophoresis stained with ethidium bromide and visualized under UV light.

LAMP assay

Two different reaction mixtures containing the primers designed were used to assess the LAMP assay to compare results.

On one hand, the LAMP assay was performed using the *Loopamp DNA amplification Kit* (Eiken Chemicals Co., Tokyo, Japan) following manufacturers' instructions. Briefly, the reaction was carried out with a total of 25 μ L reaction mixture containing 12.5 μ L of 2 \times Reaction Mix, 40 pmol of each FIP and BIP primers, 5 pmol of each F3 and B3 primers, 1 μ L of *Bst* DNA polymerase (Large fragment; LF), along with 2 μ L of DNA template.

On the other hand, we tried to set up our own LAMP reaction mixture testing another *Bst* polymerase, namely *Bst* 2.0 WarmStart DNA polymerase, as well as different betaine and MgSO₄ concentrations instead of those supplied by the commercial kit. Thus, LAMP reactions mixtures (25 μ L) contained 40 pmol of each FIP and BIP primers, 5 pmol of each F3 and B3 primers, 1.4 mM of each dNTP (Bioron), 1 \times Isothermal Amplification Buffer –20 mM Tris-HCl (pH 8.8), 50 mM KCl, 10 mM (NH₄)₂SO₄, 2 mM MgSO₄, 0.1% Tween20- (New England Biolabs, UK), betaine (ranging 0.8, 1, 1.2, 1.4 or 1.6 M) (Sigma, USA), supplementary MgSO₄ (ranging 2, 4, 6 or 8 mM) (New England Biolabs, UK) and 8 U of *Bst* 2.0 WarmStart DNA polymerase (New England Biolabs, UK) with 2 μ L of template DNA.

To establish the standard protocol for the two LAMP reaction mixtures assayed, different temperatures were tested using a

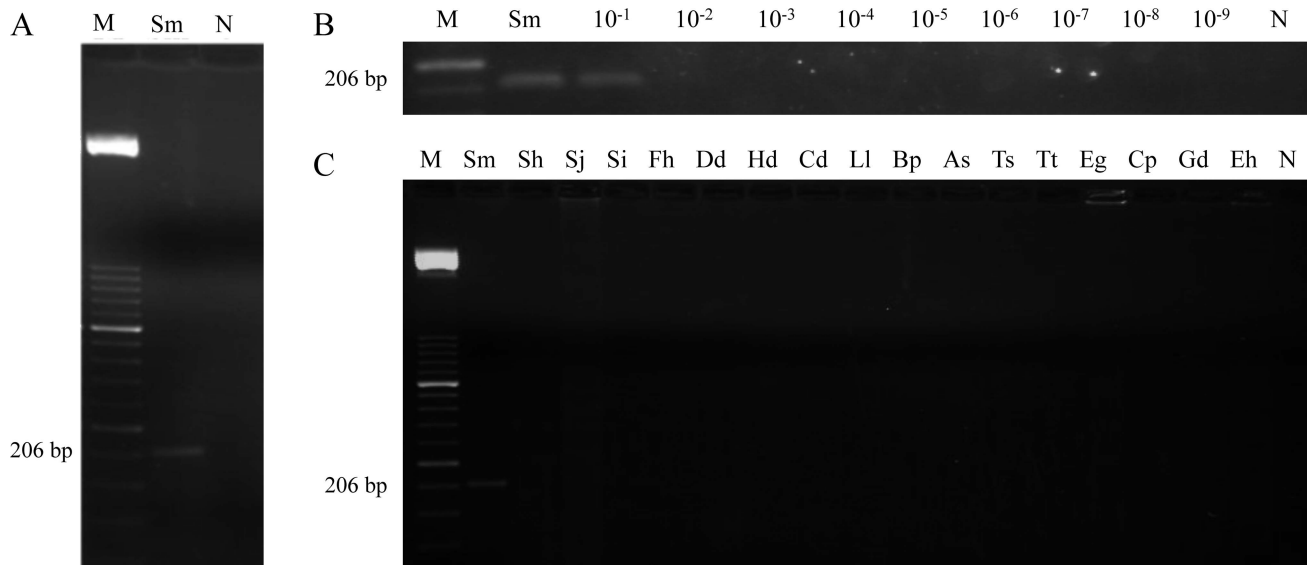


Figure 2. PCR verification, detection limit and specificity using outer primers F3 and B3. (A) PCR verification of expected 206 bp target length amplicon. Lane M, 50 bp DNA ladder (Molecular weight marker XIII, Roche); lane Sm, *S. mansoni* DNA (1 ng); lane N, negative control (no DNA template). (B) Detection limit of PCR. Lane M, 50 bp DNA ladder (Molecular weight marker XIII, Roche); lane Sm: *S. mansoni* DNA (1 ng); lanes 10^{-1} – 10^{-9} : 10-fold serially dilutions of *S. mansoni* DNA; lane N, negative control (no DNA template). (C) Specificity of PCR. Lane M, 50 bp DNA ladder (Molecular weight marker XIII, Roche); lanes Sm, Sh, Sj, Si, Fh, Dd, Hd, Cd, Ll, Bp, As, Ts, Tt, Eg, Cp, Gd, Eh, *S. mansoni*, *S. haematobium*, *S. japonicum*, *S. intercalatum*, *Dicrocoelium dendriticum*, *Hymenolepis diminuta*, *Calicophoron daubneyi*, *Loa loa*, *Brugia pahangi*, *Anisakis simplex*, *Trichinella spiralis*, *Taenia taeniformis*, *Echinococcus granulosus*, *Cryptosporidium parvum*, *Giardia intestinalis* and *Entamoeba histolytica* DNA samples (1 ng/each), respectively; lane N, negative control (no DNA template).
doi:10.1371/journal.pntd.0003126.g002

heating block (K Dry-Bath) set at 61, 63 and 65°C for 60 min and then heated at 80°C for 5 min to terminate the reaction. In each case, the optimal temperature was determined and used in the following tests. Because of the highly sensitivity of LAMP reaction, DNA contamination and carry-over of amplified products were prevented by using sterile tools at all times, performing each step of the analysis in separate work areas and minimizing manipulation of the reaction tubes. Negative controls (ultrapure water or DNA from non-infected stool samples) were included in each LAMP reaction. These controls never amplified.

Detection of LAMP products. After LAMP reaction, white turbidity of the reaction mixture due to the accumulation of magnesium pyrophosphate (a by-product of the reaction) was visually inspected by the naked eye. The LAMP amplification results were also visually detected by adding 2 μ L of 1:10 diluted 10,000 \times concentration fluorescent dye SYBR Green I (Invitrogen) to the reaction tubes. Green fluorescence was clearly observed in successful LAMP reaction, whereas it remained original orange in the negative reaction. Additionally, the LAMP reaction products (5 μ L aliquots) were also monitored using 2% agarose gel electrophoresis stained with ethidium bromide, visualized under UV light and then photographed using the ultraviolet (UV) image system (Gel documentation system, UVItec, UK).

Specificity and sensitivity of the LAMP assay. The specificity of the LAMP assay using the two different reaction mixtures to amplify only *S. mansoni* DNA was tested against several DNA samples obtained from other parasites used as controls, including *S. haematobium*, *S. japonicum*, *S. intercalatum*, *Fasciola hepatica*, *Loa loa*, *Brugia pahangi*, *Dicrocoelium dendriticum*, *Calicophoron daubneyi*, *Hymenolepis diminuta*, *Taenia taeniformis*, *Anisakis simplex*, *Trichinella spiralis*, *Echinococcus granulosus*, *Cryptosporidium parvum*, *Giardia intestinalis* and *Entamoeba histolytica*. To determine the lower detection limit of

the LAMP assay, genomic DNA from *S. mansoni* 10-fold serially diluted as mentioned above was subjected to amplification in comparison with a conventional PCR using outer primers F3 and B3.

Evaluation of the LAMP assay. To evaluate the ability of the LAMP assay designed to amplify *S. mansoni* DNA in real samples, we used DNA samples extracted from feces taken weekly from each experimentally infected mouse with 200 *S. mansoni* cercariae. In order to compare results, the *Loopamp DNA amplification Kit* and our *in house* LAMP reaction mixture were tested separately with all infected mice stool samples by duplicate from week 0 to week 8 p.i. In all amplification assays, a negative control (DNA mix from non-infected mice stool samples) was included.

Results

Monitoring of *S. mansoni* infection in mice by Kato-Katz and ELISA

The results obtained using Kato-Katz and indirect ELISA techniques on weekly stool and sera samples, respectively, from infected mice with 200 *S. mansoni* cercariae are showed in Figure S1. After infection, using the Kato-Katz technique we could only detect eggs in feces from week 6 to week 8 p.i. Specific detectable antibody levels could be measurable by ELISA from week 4 p.i. to week 8 p.i.

Specificity and sensitivity of PCR using outer primers

To make sure that the expected target was amplified, a conventional PCR reaction was performed using outer primers F3 and B3 to amplify *S. mansoni* DNA. Then, a 206 bp amplicon was successful obtained (Figure 2A). In order to determine the lower detection limit of the PCR, a 10-fold serial dilution ranging from

10^{-1} to 10^{-9} of *S. mansoni* DNA was amplified. The minimum amount of DNA detectable by PCR was 0.1 ng (Figure 2B). Moreover, when DNA samples from other parasites included in the study were subjected to this PCR assay, amplicons were never obtained (Figure 2C). Additionally, when *in silico* comparisons of the expected 206 bp sequence were carried out using BLASTn searches with the currently available genomes of *S. mansoni*, *S. haematobium* and *S. intercalatum* at Wellcome Trust Sanger Institute web site (<http://www.sanger.ac.uk>) and *S. japonicum* at GenDB web site (<http://www.genedb.org>), respectively, the higher homology in alignment length, percentage of identities and E-value were obtained for *S. mansoni*. For *S. intercalatum*, *S. haematobium* and *S. japonicum*, much lower values were found (Table S1).

Setting up LAMP assay

The optimal incubation temperature for LAMP assay using the *Loopamp DNA amplification Kit* tested with the *S. mansoni* primer set was established in a conventional heating block using a range of temperatures (61, 63 and 65°C) for 60 min to optimize the reaction conditions and then heated at 80°C for 5 min to inactivate the enzyme. The LAMP reaction could successfully take place at temperatures of 61°C, 63°C and 65°C -within the temperature range (60–65°C) recommended by the manufacturers'- although better results on agarose gels were obtained when using 63°C for amplification. Thus, the optimal temperature for LAMP using the commercial kit was established at 63°C and used for all the following applications.

To establish the standard protocol for our *in house* LAMP assay using *Bst* 2.0 WarmStart DNA polymerase we also applied a range of temperatures (61, 63 and 65°C) for testing different mixtures containing variable concentrations of betaine (ranging 0.8, 1, 1.2, 1.4 or 1.6 M) combined with supplementary variable concentrations of MgSO₄ (ranging 2, 4, 6 or 8 mM). The best amplification results were obtained when the reaction mixture contained 1 M of betaine combined with supplementary 6 mM of MgSO₄ (resulting a final concentration of 8 mM MgSO₄ in 1× Isothermal Amplification Buffer) and was incubated for 60 min at 63°C in a heating block. Thereby, the reaction mixture, in addition to the specific primer set designed -hereafter SmMIT-LAMP-, was set up as the most suitable and used in all successive LAMP reactions.

Once the most favorable conditions and molecular components were established for the two different LAMP reactions, all positive results could be visually observed by the naked eye by inspecting white turbidity as well as the color change after adding SYBR Green I. Additionally, after electrophoresis on agarose gels a ladder of multiple bands of different sizes could be also observed in positive samples (Figure 3).

Specificity and sensitivity of LAMP assay

To determine the specificity of LAMP assay for *S. mansoni*, 16 additional DNA samples from other parasites were tested for amplification. We obtained identical results using both the *Loopamp DNA amplification Kit* and SmMIT-LAMP reaction mixtures. Thus, a positive result was only obtained using DNA from *S. mansoni* whereas DNA samples from other specimens were not amplified. These results indicate that no cross-amplification was observed with these heterogeneous species in the LAMP assay, demonstrating its high specificity (Figure 4A).

Nevertheless, when sensitivity was evaluated using *S. mansoni* DNA 10-fold serially diluted, the limit of detection of LAMP using the *Loopamp DNA amplification Kit* was 10 fg (Figure 4B), whereas the limit of detection using SmMIT-LAMP was established in 1 fg (Figure 4C). These results showed that

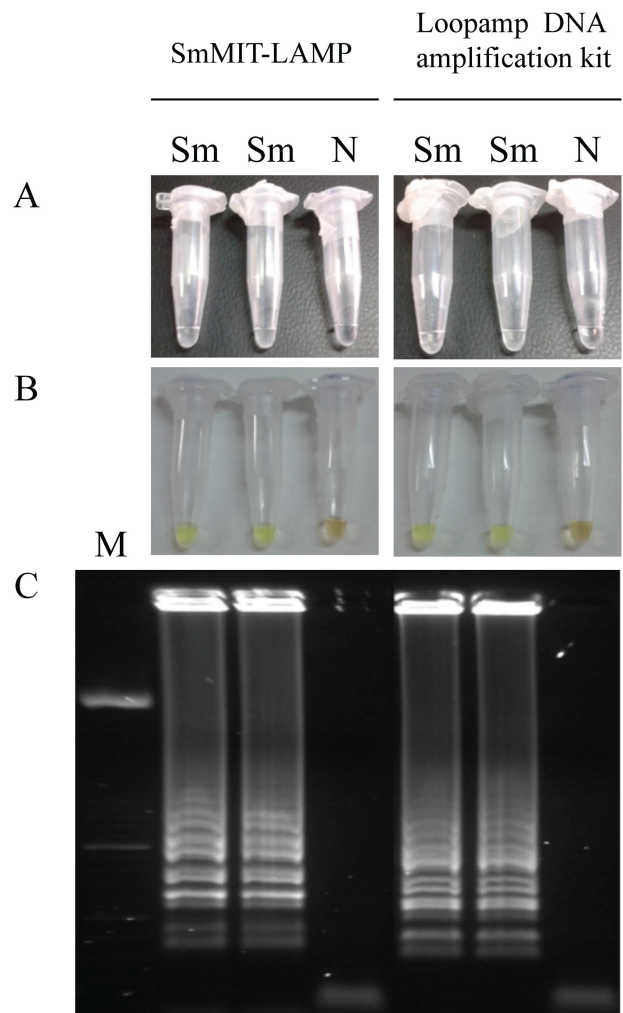


Figure 3. LAMP detection of *S. mansoni* genomic DNA samples using SmMIT-LAMP or the *Loopamp DNA amplification kit* at 63°C for 1 h. (A) The turbidity of the reaction mixture was inspected by the naked eye. (B) The LAMP amplification results were also visually detected by adding the fluorescent dye SYBR Green I to the reaction tubes. A successful LAMP reaction would turn to green; otherwise, it would remain orange (C) LAMP products were also monitored using 2% agarose gel electrophoresis stained with ethidium bromide. Lane M, 50 bp DNA ladder (Molecular weight marker XIII, Roche); lanes Sm: *S. mansoni* DNA (1 ng); lane N, negative control (no DNA template). doi:10.1371/journal.pntd.0003126.g003

sensitivity of the SmMIT-LAMP assay is tenfold higher than that of the LAMP assay by using a standard reaction mixture supplied by the commercial kit. Furthermore, the detection limit of SmMIT-LAMP was 10^5 times more than that previously obtained by PCR (see Figure 2B).

Examination of mice stool samples by LAMP

When testing stool samples from mice infected with *S. mansoni* by the *Loopamp DNA amplification Kit*, we detected positive results continuously from week 2 p.i. to week 8 p.i. in all samples analyzed (Figure 5A). By contrast, when using SmMIT-LAMP for amplification, positive results were continuously obtained in all stool samples from week 1 p.i. to week 8 p.i. (Figure 5B). Therefore, the SmMIT-LAMP assay developed was able to detect *S. mansoni* DNA in stool samples one week earlier in comparison

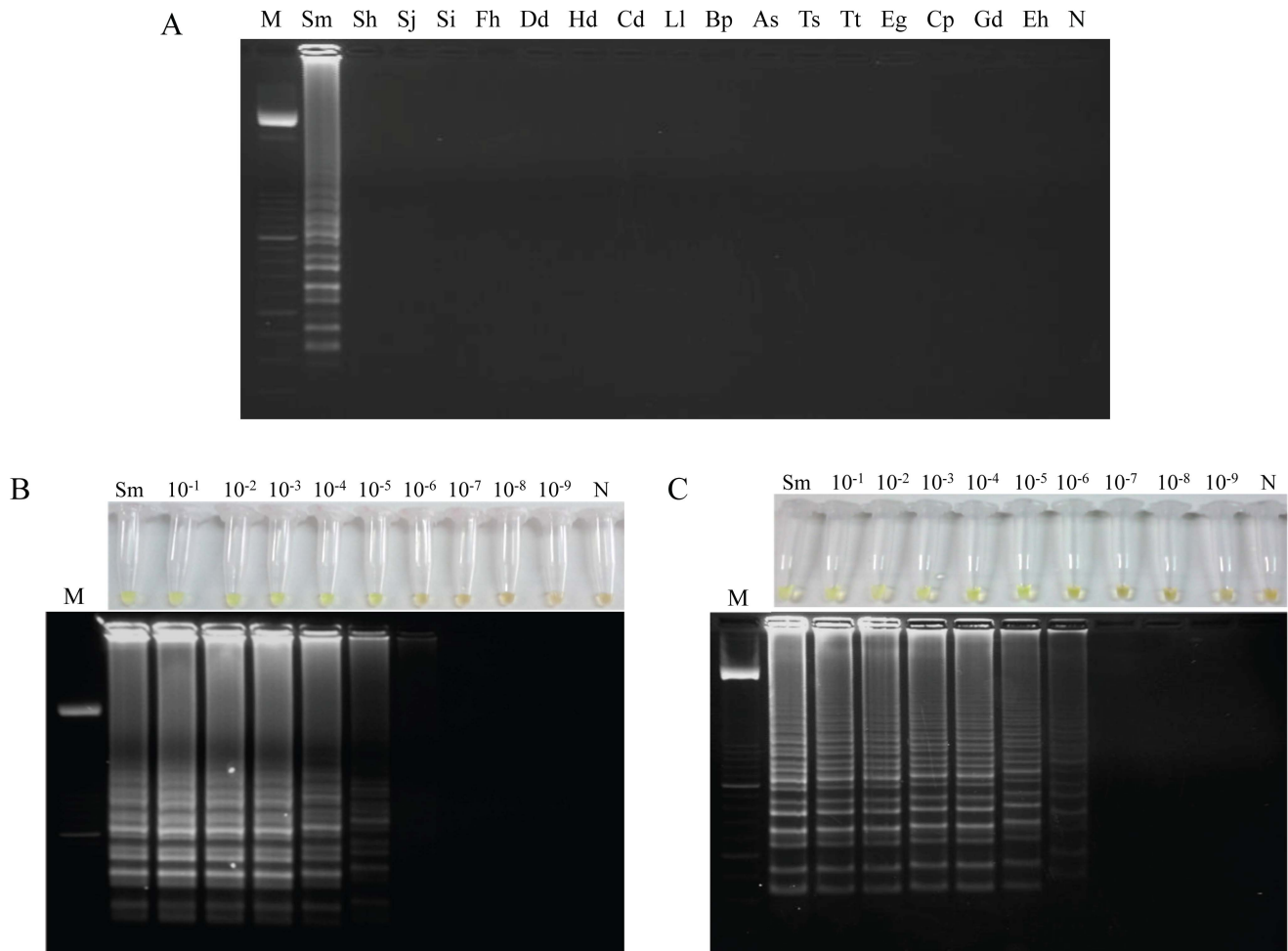


Figure 4. Specificity and sensitivity assessment of the LAMP assay for *S. mansoni*. (A) Specificity assessment performed with SmMIT-LAMP is shown. Identical results were obtained using *Loopamp DNA amplification Kit*. A ladder of multiple bands of different sizes could be only observed in *S. mansoni* DNA sample. Lane M, 50 bp DNA ladder (Molecular weight marker XIII, Roche); lanes Sm, Sh, Sj, Si, Fh, Dd, Hd, Cd, Ll, Bp, As, Ts, Tt, Eg, Cp, Gd, Eh, *S. mansoni*, *S. haematobium*, *S. japonicum*, *S. intercalatum*, *Dicrocoelium dendriticum*, *Hymenolepis diminuta*, *Calicophoron daubneyi*, *Loa loa*, *Brugia pahangi*, *Anisakis simplex*, *Trichinella spiralis*, *Taenia taeniformis*, *Echinococcus granulosus*, *Cryptosporidium parvum*, *Giardia intestinalis* and *Entamoeba histolytica* DNA samples (1 ng/each), respectively; lane N, negative control (no DNA template). (B) Sensitivity assessment performed with the *Loopamp DNA amplification kit* at 63°C for 1 h using serial dilutions of *S. mansoni* genomic DNA by the addition of SYBR Green I (up) or by visualization on agarose gel (down). (C) Sensitivity assessment performed with SmMIT-LAMP at 63°C for 1 h using serial dilutions of *S. mansoni* genomic DNA by the addition of SYBR Green I (up) or by visualization on agarose gel (down). Lane M: 50 bp DNA ladder (Molecular weight marker XIII, Roche); lanes Sm: genomic DNA from *S. mansoni* (1 ng); lanes 10^{-1} – 10^{-9} : 10-fold serially dilutions; lanes N: negative controls (no DNA template). doi:10.1371/journal.pntd.0003126.g004

to the LAMP assay accomplished with a standard commercial reaction mixture.

Discussion

Human schistosomiasis, caused by several species of the trematode *Schistosoma*, is a major endemic parasitic disease in many tropical regions of Asia, Africa and South America, with *S. mansoni* being the most important species in terms of prevalence, morbidity, mortality and socioeconomic impact [2]. This morbidity and mortality is mainly associated with the chronic stage of infection, when egg deposition followed by granuloma formation in different organs, especially in liver and intestine, occurs. Although the use of praziquantel as chemotherapeutic treatment and control for the disease has a clear effect on morbidity [41], [42], resistance has been already described after repeated mass drug administration [43]. Thus, methods that allow early

diagnosis, both in acute and chronic stages, are a prerequisite for effective disease control. Moreover, diagnostic tools able to detect *S. mansoni* infections mainly in acute stage would be of great value permitting early treatment that could prevent the pathology associated with chronic infections.

Currently, the *gold standard* method for diagnosis of *S. mansoni* infections is the Kato-Katz technique to count of parasite eggs excreted in feces because of its low operational costs, practicality and ability to be quantitative. However, this method requires sequential samples and is unable to detect prepatent infection, low levels of infection particularly found in children [44] or infections in individuals with a low worm burden and those in low disease transmission areas [45]. On the other hand, although many of the serology-based analyses developed present greater sensitivity than Kato-Katz technique, they currently continue to present problems in acute infections detection, lack of sensitivity, cross-reactions and false positives usually corresponding to patients who have already

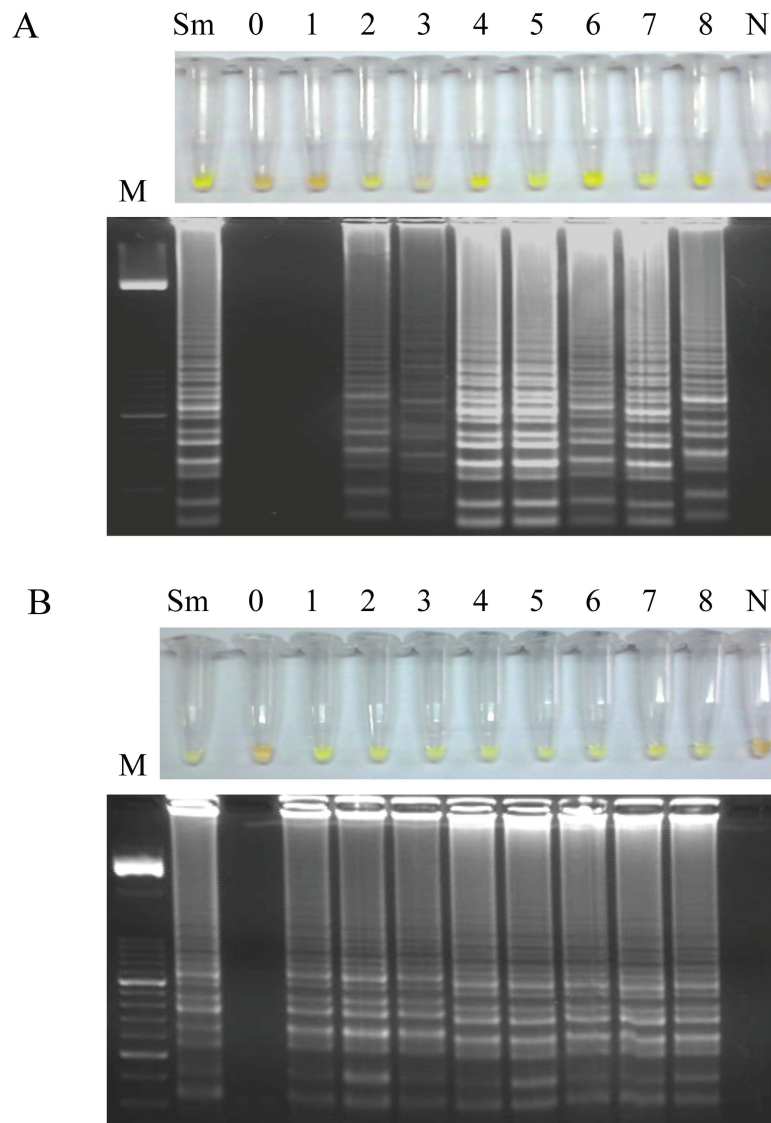


Figure 5. Examination of stool samples weekly obtained from mice infected with 200 *S. mansoni* cercariae. (A) By using the *Loopamp* DNA amplification kit. (B) By using the SmMIT-LAMP developed in this study. Figure shows the results obtained in feces samples weekly obtained from week 0 p.i. to week 8 p.i. from an infected mouse randomly selected. Identical results were obtained in all infected mice. Lanes M, 50 bp DNA ladder (Molecular weight marker XIII, Roche); lanes Sm, *S. mansoni* DNA, as positive control (1 ng); lanes 0–8, weeks 0, 1, 2, 3, 4, 5, 6, 7 and 8 p.i., respectively; lanes N; DNA mix from pooled DNA samples obtained from feces from non-infected mice, as negative control.
doi:10.1371/journal.pntd.0003126.g005

eliminated the parasite after efficient chemotherapy [46], [47]. All this together is currently a drawback and a considerable number of schistosomiasis patients can be incorrectly diagnosed. In this scenario, there is a need in developing new specific and more sensitive molecular diagnostic tools easy to perform in field conditions for diagnosis of schistosomiasis due to *S. mansoni*. An interesting and promising approach is the LAMP technology. Compared to PCR-based assays, LAMP has the advantages of reaction simplicity, rapidity, specificity, cost-effective and higher amplification efficiency. Furthermore, since DNA amplification and reading of results require minimum equipment, the technique has great potential for use in low-income countries [26], [27], [28]. These advantages of the technique make it appealing for use in schistosomiasis-endemic regions.

In our study, we used a *S. mansoni* murine model in order to test a new LAMP assay for early diagnosis of schistosomiasis in

stool samples. Classical diagnostic techniques, such as Kato-Katz and ELISA were used for monitoring infection. Mice have been shown to be permissive to *S. mansoni* [48] and also widely used in studying dynamics of schistosome infections, including diagnosis [49]. The use of a *S. mansoni* murine model allowed us to collect well-defined stool samples that would otherwise have been difficult to obtain from human patients, such as stool samples from recently acquired infections. Thus, using the Kato-Katz technique we could detect eggs in feces collected from infected mice from week 6 to 8 p.i. When measuring specific detectable antibody levels by ELISA we could detect IgG in infected mice from week 4 p.i. until the end of the experiment. Very similar results were previously obtained by our group in detecting eggs in stool and specific antibodies in sera from mice infected with 200 *S. mansoni* cercariae [50]. As it would be logical to expect, classical diagnostic techniques were not effective to detect the acute stage of infection.

In our work, a 620 bp sequence corresponding to a mitochondrial *S. mansoni* minisatellite DNA region [40] was selected as a target for designing a LAMP-based method to detect *S. mansoni* DNA. The minisatellite region in the mitochondrial genome of *S. mansoni* seems to be unique to that species and has been already used as a target for PCR-based identification of infected snails [51]. In addition, mitochondrial sequences have some advantages over the more usual nuclear targets for amplification approaches. As each cell contains many mitochondria, multiple copies occur in every cell providing many copies of any mitochondrial DNA target region. Thus, greater sensitivity will be possible if the target sequence is present in high copy number and is highly specific and widely conserved within a particular pathogen species or group [52]. The mito-LAMP strategy has already been successfully developed for detection of several parasites, including *Opisthorchis viverrini* [53], *Trichinella spiralis* [54], *Echinococcus granulosus* [55] and *Plasmodium* spp. or *P. falciparum* specifically [56].

Once the primer set was designed, we attempted to verify the specificity for a 206 bp expected fragment amplification using a conventional PCR performed with the two outers primers to amplify *S. mansoni* DNA. As a result, a correctly sized amplicon was obtained. Additionally, no cross-reactions were found when using DNA as a target from other parasites tested in the study, including several *Schistosoma* species, such as *S. haematobium*, *S. japonicum* or *S. intercalatum*, thereby ensuring high specificity for target amplification. Furthermore, *in silico* comparisons of the expected 206 bp sequence with the *on line* available genomes of *Schistosoma* spp. showed the higher homology in alignment length with *S. mansoni*.

After verifying the specificity of the outer primers by PCR in only *S. mansoni* DNA amplification, we attempted to establish the most suitable reaction mixture for the four specific primers operation in the LAMP assay. To do this, we used a standard reaction mixture supplied by the *Loop Amplification kit* containing *Bst* DNA polymerase LF and an *in house* reaction mixture containing *Bst* 2.0 WarmStart polymerase. The latter, is an *in silico* designed homologue of *Bst* DNA polymerase LF with a reversibly-bound aptamer, which inhibits polymerase activity at temperatures below 45°C. This feature prevent about the possible undesired activity from DNA polymerases during preparation of reaction mixtures at room temperature [57], [58], [59], allowing the preparation as well as storage of the LAMP reactions for hours without changing in the final readout, as recently reported in diagnosis of brugian filariasis by LAMP using *Bst* 2.0 WarmStart polymerase [60]. It should be noted that this feature is a very important advantage in order to perform a LAMP assay in field settings where usually limited resources are found.

Regarding specificity, both LAMP reaction mixtures performed equally well at established optimal incubation temperature and exclusively *S. mansoni* DNA was amplified. However, when sensitivity of the LAMP reaction mixtures were evaluated using *S. mansoni* DNA 10-fold serially diluted, the limit of detection using SmMIT-LAMP resulted tenfold higher than that obtained using the standard reaction mixture supplied by the commercial kit (1 fg *vs.* 10 fg, respectively), thus indicating that SmMIT-LAMP is sensitive enough to detect *S. mansoni* DNA at a very low level. We underline the importance of setting up the best conditions and molecular components for primers set operation in a LAMP assay. Besides, developing an *in house* LAMP assay is much more cost-effective than using more expensive commercial kits when a large number of samples must be tested.

That increased sensitivity achieved using SmMIT-LAMP was subsequently corroborated when weekly stool samples from infected mice were tested using both LAMP reaction mixtures.

In this sense, SmMIT-LAMP allowed us to detect *S. mansoni* DNA in all infected mice samples one week earlier than using the LAMP commercial reaction mixture (1 week p.i. *vs.* 2 week p.i., respectively). Therefore, an early diagnosis of active *S. mansoni* infection was possible in stool samples using SmMIT-LAMP as soon as one week p.i. It is also noteworthy that green fluorescence by adding SYBR Green I was clearly observed in all successful LAMP reactions, whereas it remained original orange in the negative reactions. This color inspection by the naked eye is a great advantage of the LAMP technique and may be preferentially used under field conditions in endemic areas without requiring electrophoresis to visualize the amplification results.

In conclusion, the results of our study demonstrated that the established SmMIT-LAMP assay is cost-effective, easy to perform, specific and sensitive enough for early detection of *S. mansoni* DNA in stool samples. Although further research for evaluation of the method for the application in patients' samples is required, the method is potentially and readily adaptable for field diagnosis and disease surveillance in schistosomiasis-endemic areas.

Supporting Information

Figure S1 Monitoring of *S. mansoni* experimental infection in mice by Kato-Katz and ELISA in weekly stool and sera samples, respectively, from weeks 0 to 8 post-infection. Mice were experimentally infected with 200 *S. mansoni* cercariae. X axis represent weeks post-infection. Y axis represent number of *S. mansoni* eggs/g of feces (mean \pm SE; left) and absorbances of respective sera (OD) read at 492 nm (mean \pm SE; right). (TIFF)

Table S1 BLASTn results comparing the *S. mansoni* expected 206 base pair target amplicon with the whole genome of currently available *Schistosoma* species. *Schistosoma* species, currently genomes versions available, scaffolds, alignment situation, alignment length, identities and E-value are indicated. Results obtained for *S. mansoni*, *S. haematobium* and *S. intercalatum* come from Wellcome Trust Sanger Institute web site (<http://www.sanger.ac.uk>) and results obtained for *S. japonicum* come from GenDB web site (<http://www.genedb.org>). bp: base pair; %: percentage of identity. (DOCX)

Checklist S1 Checkmarks for the STARD checklist. (PDF)

Flow Diagram S1 A diagram showing experimental design and results. p.i. indicates post-infection. (TIFF)

Acknowledgments

The authors would like to thank Y. Manga (CSIC, León, Spain), P. Foronda (University of La Laguna, Tenerife, Spain), C. Cuéllar (UCM, Madrid, Spain), E. Rodríguez (ISCIII, Madrid, Spain), A. O. Castro (CIBP-INSA, Porto, Portugal) and BEI Resources, NIAID, NIH for kindly providing parasite DNA samples. We would also like to thank J. Hernández for excellent maintenance support of *Schistosoma mansoni* life cycle in the laboratory and for help in experimental *S. mansoni* infection.

Author Contributions

Conceived and designed the experiments: PFS JGA AM JLA. Performed the experiments: JGA PFS ASH BVS. Analyzed the data: PFS JGA AM JLA. Contributed reagents/materials/analysis tools: JGA PFS ASH BVS JLA. Contributed to the writing of the manuscript: PFS JGA AM.

References

- World Health Organization (2014) The 17 neglected tropical diseases. Available: http://www.who.int/neglected_diseases/diseases/en/. Accessed 15 July 2014.
- King CH, Dickman K, Tisch DJ (2005) Reassessment of the cost of chronic helminth infection: a meta-analysis of disability-related outcomes in endemic schistosomiasis. *Lancet* 365: 1561–1569.
- Uttinger J, Raso G, Brooker S, De Savigny D, Tanner M, et al. (2009) Schistosomiasis and neglected tropical diseases: towards integrated and sustainable control and a word of caution. *Parasitology* 136: 1859–74.
- King CH (2010) Parasites and poverty: the case of schistosomiasis. *Acta Trop* 113: 95–104.
- Chitsulo L, Loverde P, Engels D (2004) Schistosomiasis. *Nat Rev Microbiol* 2: 12–13.
- Freedman DO, Weld LH, Kozarsky PE, Fisk T, Robins R, et al. (2006) Spectrum of disease and relation to place of exposure among ill returned travelers. *N Engl J Med* 354: 119–30.
- Jelinek T, Nothdurft HD, Loscher T (1996) Schistosomiasis in travelers and expatriates. *J Travel Med* 3: 160–164.
- Grobusch MP, Muhlberger N, Jelinek T, Bisoffi Z, Corachán M, et al. (2003) Imported schistosomiasis in Europe: sentinel surveillance data from TropNetEurop. *J Travel Med* 10: 164–169.
- Berhe N, Medhin G, Erko B, Smith T, Gedamu S, et al. (2004) Variations in helminth faecal egg counts in Kato-Katz thick smears and their implications in assessing infection status with *Schistosoma mansoni*. *Acta Trop* 92: 205–212.
- Doenhoff MJ, Chiodini PL, Hamilton JV (2004) Specific and sensitive diagnosis of schistosome infection: can it be done with antibodies? *Trends Parasitol* 20: 35–39.
- Pontes LA, Dias-Neto E, Rabello A (2002) Detection by polymerase chain reaction of *Schistosoma mansoni* DNA in human serum and feces. *Am J Trop Med Hyg* 66: 157–162.
- Pontes LA, Oliveira MC, Katz N, Dias-Neto E, Rabello A (2003) Comparison of a polymerase chain reaction and the Kato-Katz technique for diagnosing infection with *Schistosoma mansoni*. *Am J Trop Med Hyg* 68: 652–656.
- Gobert GN, Chai M, Duke M, McManus DP (2005) Copro-PCR based detection of *Schistosoma* eggs using mitochondrial DNA markers. *Mol Cell Prob* 19: 250–254.
- ten Hove RJ, Verweij JJ, Vereecken K, Polman K, Dieye L, et al. (2008) Multiplex real-time PCR for the detection and quantification of *Schistosoma mansoni* and *S. haematobium* infection in stool samples collected in northern Senegal. *Trans R Soc Trop Med Hyg* 102: 179–185.
- Allam AF, Kader O, Zaki A, Shehab AY, Farag HF (2009) Assessing the marginal error in diagnosis and cure of *Schistosoma mansoni* in areas of low endemicity using Percoll and PCR techniques. *Trop Med Int Health* 14: 316–321.
- Wichmann D, Panning M, Quack T, Kramme S, Burchard GD, et al. (2009) Diagnosing schistosomiasis by detection of cell-free parasite DNA in human plasma. *PLoS Negl Trop Dis* 3: 422.
- Sandoval N, Siles-Lucas M, Pérez-Arellano JL, Carranza C, Puente S, et al. (2006b) A new PCR-based approach for the specific amplification of DNA from different *Schistosoma* species applicable to human urine samples. *Parasitology* 133: 581–587.
- Notomi T, Okayama H, Masubuchi H (2000) Loop-mediated isothermal amplification of DNA. *Nucleic Acids Res* 28: E63.
- Mori Y, Nagamine K, Tomita N, Notomi T (2001) Detection of loop-mediated isothermal amplification reaction by turbidity derived from magnesium pyrophosphate formation. *Biochem Biophys Res Commun* 289: 150–154.
- Tomita N, Mori Y, Kanda H, Notomi T (2008) Loop-mediated isothermal amplification (LAMP) of gene sequences and simple visual detection of products. *Nat Protoc* 3: 877–882.
- LaBarre P, Hawkins KR, Gerlach J, Wilmoth J, Beddoe A, et al. (2011) A simple, inexpensive device for nucleic acid amplification without electricity—toward instrument-free molecular diagnostics in low-resource settings. *PLoS ONE* 6: e19738.
- Curtis KA, Rudolph DL, Nejad I, Singleton J, Beddoe A, et al. (2012) Isothermal amplification using a chemical heating device for point-of-care detection of HIV-1. *PLoS ONE* 7: e31432.
- Hatano B, Maki T, Obara T, Fukumoto H, Hagiwara K, et al. (2010) LAMP using a disposable pocket warmer for anthrax detection, a highly mobile and reliable method for antibiotechnology. *Jpn J Infect Dis* 63: 36–40.
- Nkouawa A, Sako Y, Li T, Chen X, Nakao M, et al. (2012) A loop-mediated isothermal amplification method for a differential identification of *Taenia* tapeworms from human: application to a field survey. *Parasitol Int* 61: 723–725.
- Fu S, Qu G, Guo S, Ma L, Zhang N, et al. (2010) Applications of loop-mediated isothermal DNA amplification. *Appl Biochem Biotechnol* 163: 845–50.
- Parida M, Samnangaiha S, Dash PK, Rao PV, Morita K (2008) Loop-mediated isothermal amplification (LAMP): a new generation of innovative gene amplification technique; perspectives in clinical diagnosis of infectious diseases. *Rev Med Virol* 18: 407–421.
- Njiru ZK (2012) Loop-mediated isothermal amplification technology: towards point of care diagnostics. *PLoS Negl Trop Dis* 6: e1572.
- Mori Y, Kanda H, Notomi T (2013) Loop-mediated isothermal amplification (LAMP): recent progress in research and development. *J Infect Chemother* 19: 404–411.
- Xu J, Rong R, Zhang HQ, Shi CJ, Zhu XQ, et al. (2009) Sensitive and rapid detection of *Schistosoma japonicum* DNA by loop-mediated isothermal amplification (LAMP). *Int J Parasitol* 40: 327–31.
- Wang C, Chen L, Yin X, Hua W, Hou M, et al. (2011) Application of DNA-based diagnostics in detection of schistosomal DNA in early infection and after drug treatment. *Parasit Vectors* 4: 164.
- Abbasi I, King CH, Muchiri EM, Hamburger J (2010) Detection of *Schistosoma mansoni* and *Schistosoma haematobium* DNA by loop-mediated isothermal amplification: identification of infected snails from early prepatency. *Am J Trop Med Hyg* 83: 427–432.
- Hamburger J, Abbasi I, Kariuki C, Wanjala A, Mzungu E, et al. (2013) Evaluation of loop-mediated isothermal amplification suitable for molecular monitoring of schistosome-infected snails in field laboratories. *Am J Trop Med Hyg* 88: 344–351.
- Kumagai T, Furushima-Shimogawara R, Ohmae H, Wang TP, Lu S, et al. (2010) Detection of early and single infections of *Schistosoma japonicum* in the intermediate host snail, *Oncomelania hupensis*, by PCR and loop-mediated isothermal amplification (LAMP) assay. *Am J Trop Med Hyg* 83: 542–8.
- Tong QB, Chen R, Zhang Y, Yang GJ, Kumagai T, et al. (2014) A new surveillance and response tool: Risk map of infected *Oncomelania hupensis* detected by Loop-mediated isothermal amplification (LAMP) from pooled samples. *Acta Trop*. doi: 10.1016/j.actatropica.2014.01.006. [Epub ahead of print]
- Freire N, Rodrigues-Silva R, Machado-Silva JR, Rey L (2003) A comparative parasitologic study on *Biomphalaria glabrata* snail and C3H/He mice infected with human and murine isolates of *Schistosoma mansoni* derived from Sumidouro, Rio de Janeiro, Brazil. *Mem Inst Oswaldo Cruz* 98: 783–787.
- Smithers SR, Terry RJ (1965) The infection of laboratory hosts with cercariae of *Schistosoma mansoni* and the recovery of the adult worms. *Parasitology* 55: 695–700.
- Katz N, Chaves A, Pellegrino J (1972) A simple device for quantitative stool thick-smear technique in *Schistosomiasis mansoni*. *Rev Inst Med Trop Sao Paulo* 14: 397–400.
- Pardo J, Carranza C, Turrientes MC, Pérez Arellano JL, López Velez R, et al. (2004) Utility of *Schistosoma bovis* adult worm antigens for diagnosis of human schistosomiasis by enzyme-linked immunosorbent assay and electroimmunotransfer blot techniques. *Clin Diagn Lab Immunol* 11: 1165–1170.
- Altschul SF, Gish W, Miller W, Myers EW, Lipman DJ (1990) Basic local alignment search tool. *J Mol Biol* 215:403–410.
- Pena HB, de Souza CP, Simpson AJ, Pena SD (1995) Intracellular promiscuity in *Schistosoma mansoni*: nuclear transcribed DNA sequences are part of a mitochondrial minisatellite region. *Proc Natl Acad Sci* 92: 915–919.
- Richter J (2003) The impact of chemotherapy on morbidity due to schistosomiasis. *Acta Trop* 86: 161–183.
- King CH, Sturrock RF, Kariuki HC, Hamburger J (2006) Transmission control for schistosomiasis - why it matters now. *Trends Parasitol* 22: 575–582.
- Wang W, Wang L, Liang YS (2012) Susceptibility or resistance of praziquantel in human schistosomiasis: a review. *Parasitol Res* 111: 1871–1877.
- Stothard JR, Sousa-Figueiredo JC, Betson M, Adriko M, Arinaitwe M, et al. (2011) *Schistosoma mansoni* infections in young children: when are schistosome antigens in urine, eggs in stool and antibodies to eggs first detectable? *PLoS Negl Trop Dis* 5: e938.
- Enk MJ, Lustosa Lima AC, Drummond SC, Schall VT, Coelho PMZ (2008) The impact of the number of stool samples on the prevalence, the infection intensity and the distribution of the infection with *Schistosoma mansoni* among a population in an area of low transmission. *Acta Tropica* 108: 222–228.
- Doenhoff MJ, Chiodini PL, Hamilton JV (2004) Specific and sensitive diagnosis of schistosome infection: can it be done with antibodies? *Trends Parasitol* 20: 35–39.
- Sorgho H, Bahgat M, Poda JN, Song W, Kirsten C, et al. (2004) Serodiagnosis of *Schistosoma mansoni* infections in an endemic area of Burkina Faso: performance of several immunological tests with different parasite antigens. *Acta Trop* 93: 169–80.
- Cheever AW, Lenzi JA, Lenzi HL, Andrade ZA (2002) Experimental models of *Schistosoma mansoni* infection. *Mem Inst Oswaldo Cruz* 97: 917–940.
- Wang Y, Holmes E, Nicholson JK, Cloarec O, Chollet J, et al. (2004) Metabonomic investigations in mice infected with *Schistosoma mansoni*: an approach for biomarker identification. *Proc Natl Acad Sci* 101: 12676–12681.
- Sandoval N, Siles-Lucas M, López Abán J, Pérez-Arellano JL, Gárate T, et al. (2006a) *Schistosoma mansoni*: a diagnostic approach to detect acute schistosomiasis infection in a murine model by PCR. *Exp Parasitol* 114: 84–88.
- Jannotti-Passos LK, Vidigal TH, Dias-Neto E, Pena SD, Simpson AJ, et al. (1997) PCR amplification of the mitochondrial DNA minisatellite region to detect *Schistosoma mansoni* infection in *Biomphalaria glabrata* snails. *J Parasitol* 83: 395–359.
- Le TH, Blair D, McManus DP (2002) Mitochondrial genomes of parasitic flatworms. *Trends Parasitol* 18: 206–213.

53. Le TH, Nguyen NT, Truong NH, De NV (2012) Development of mitochondrial loop-mediated isothermal amplification for detection of the small liver fluke *Opisthorchis viverrini* (Opisthorchiidae; Trematoda; Platyhelminthes). *J Clin Microbiol* 50: 1178–1184.
54. Lin Z, Cao J, Zhang H, Zhou Y, Deng M, et al. (2013) Comparison of three molecular detection methods for detection of *Trichinella* in infected pigs. *Parasitol Res* 112: 2087–2093.
55. Xiang-Zhen X, Xiao-Lin J, Jian L, Wen-Cai J, Gang J (2011) Preliminary study on detection of *Echinococcus granulosus* DNA by loop-mediated isothermal amplification. *Zhongguo Xue Xi Chong Bing Fang Zhi Za Zhi* 23: 558–565. [Article in Chinese].
56. Polley SD, Mori Y, Watson J, Perkins MD, González IJ, et al. (2010) Mitochondrial DNA targets increase sensitivity of malaria detection using loop-mediated isothermal amplification. *J Clin Microbiol* 48: 2866–2871.
57. Tanner NA, Zhang Y, Evans TC Jr (2012) Simultaneous multiple target detection in real-time loop-mediated isothermal amplification. *Biotechniques* 53: 81–89.
58. Kellogg DE, Rybalkin I, Chen S, Mukhamedova N, Vlasik T, et al. (1994) TaqStart Antibody: “hot start” PCR facilitated by a neutralizing monoclonal antibody directed against Taq DNA polymerase. *Biotechniques* 16: 1134–1137.
59. Kimura Y, de Hoon MJ, Aoki S, Ishizu Y, Kawai Y, et al. (2011) Optimization of turn-back primers in isothermal amplification. *Nucleic Acids Res* 39: e59.
60. Poole CB, Tanner NA, Zhang Y, Evans TC Jr, Carlow CK (2012) Diagnosis of brugian filariasis by loop-mediated isothermal amplification. *PLoS Negl Trop Dis* 6: e1948.