

Clinical challenge for gastroenterologists–Gastrointestinal manifestations of systemic mastocytosis: A comprehensive review

Alessandra Elvevi, Elena Maria Elli, Martina Lucà, Miki Scaravaglio, Fabio Pagni, Stefano Ceola, Laura Ratti, Pietro Invernizzi, Sara Massironi

Specialty type: Gastroenterology and hepatology

Provenance and peer review: Invited article; Externally peer reviewed.

Peer-review model: Single blind

Peer-review report's scientific quality classification

Grade A (Excellent): 0
Grade B (Very good): B, B
Grade C (Good): C
Grade D (Fair): 0
Grade E (Poor): 0

P-Reviewer: Bairwa DBL, India; Guo F, China; Piris-Villaespesa M, Spain

Received: December 3, 2021

Peer-review started: December 3, 2021

First decision: May 29, 2022

Revised: June 6, 2022

Accepted: July 11, 2022

Article in press: July 11, 2022

Published online: August 7, 2022



Alessandra Elvevi, Martina Lucà, Miki Scaravaglio, Laura Ratti, Pietro Invernizzi, Sara Massironi, Gastroenterology Division, San Gerardo Hospital, University of Milano – Bicocca School of Medicine, Monza 20900, Italy

Elena Maria Elli, Hematology Division and Bone Marrow Transplant Unit, San Gerardo Hospital, Monza 20900, Italy

Fabio Pagni, Stefano Ceola, Department of Medicine and Surgery, Section of Pathology, San Gerardo Hospital, University of Milano – Bicocca School of Medicine, Monza 20900, Italy

Corresponding author: Sara Massironi, MD, PhD, Gastroenterology Division, San Gerardo Hospital, University of Milano – Bicocca School of Medicine, Via G.B. Pergolesi 33, Monza 20900, Italy. sara.massironi@libero.it

Abstract

Mastocytosis is a rare and heterogeneous disease characterized by various clinical and biological features that affect different prognoses and treatments. The disease is usually divided into 2 principal categories: cutaneous and systemic disease (SM). Clinical features can be related to mast cell (MC) mediator release or pathological MC infiltration. SM is a disease often hard to identify, and the diagnosis is based on clinical, biological, histological, and molecular criteria with different specialists involved in the patient's clinical work-up. Among all manifestations of the disease, gastrointestinal (GI) symptoms are common, being present in 14%-85% of patients, and can significantly impair the quality of life. Here we review the data regarding GI involvement in SM, in terms of clinical presentations, histological and endoscopic features, the pathogenesis of GI symptoms, and their treatment.

Key Words: Systemic mastocytosis; Gastrointestinal involvement; Gastrointestinal symptoms

©The Author(s) 2022. Published by Baishideng Publishing Group Inc. All rights reserved.

Core Tip: Gastrointestinal (GI) involvement is frequent in systemic disease (SM); GI symptoms are frequent (second in frequency only to itching), being the main culprits of chronic disorders, and are a major determinant of quality of life. GI symptoms could be secondary both to mast cell (MC) mediator release and MC infiltration in the GI tract, causing organ dysfunction. Diagnosis of GI involvement in SM is based on clinical and endoscopic suspicion and histologic demonstration of MC infiltration in GI mucosa, using immunohistochemistry (*i.e.*, CD117, tryptase, CD25). Symptomatic treatment is used to control mediators-release symptoms while cytoreductive therapies are necessary to reduce organ dysfunction secondary to MC infiltration and proliferation.

Citation: Elvevi A, Elli EM, Lucà M, Scaravaglio M, Pagni F, Ceola S, Ratti L, Invernizzi P, Massironi S. Clinical challenge for gastroenterologists—Gastrointestinal manifestations of systemic mastocytosis: A comprehensive review. *World J Gastroenterol* 2022; 28(29): 3767-3779

URL: <https://www.wjgnet.com/1007-9327/full/v28/i29/3767.htm>

DOI: <https://dx.doi.org/10.3748/wjg.v28.i29.3767>

INTRODUCTION

Mastocytosis is a rare type of myeloid neoplasm characterized by clonal expansion and accumulation of morphologically and immune-phenotypically abnormal mast cells (MCs) in one or more organ systems [1]. Clinical presentation in mastocytosis patients is heterogeneous[1,2]. Cutaneous mastocytosis (CM) is the skin-limited presentation; it is most common in children, who experience spontaneous regression of skin lesions during their growth. Systemic mastocytosis (SM) is, on the contrary, a condition of MCs proliferation associated with extra-cutaneous involvement, and it is more frequent in adult patients. Neoplastic MCs form focal and/or diffuse infiltrates in various internal organs, including the bone marrow (BM), spleen, liver, and gastrointestinal (GI) tract[2-4]. Regardless of the type of SM, the BM is involved in virtually all patients.

In 2016, the World Health Organization (WHO) classification of SM identified 5 clinical variants with different prognoses: indolent SM (ISM), smoldering SM (SSM), aggressive SM (ASM), SM with associated hematological neoplasm (SM-AHN), and mast cell leukemia (MCL)[5,6]. Advanced SM (ASM, SM-AHN, and MCL) is generally associated with a poor outcome, whereas ISM patients usually have a comparable life expectancy in comparison with the general population[1,2].

In recent years, knowledge of the pathophysiology of mastocytosis has improved. Particularly, research has found that a recurrent activating D816V KIT mutation, located in the phosphor-transferase domain (PTD) of the receptor, is detectable in more than 80% of adult patients with SM[7,8]. Further genetic alterations, usually involved in myeloid malignances pathogenesis, are often found in advanced forms of SM. These mutations are associated with aggressive disease and poor prognosis[9].

For many years, mastocytosis has been considered an orphan disease, and this might be an explanation for the difficulty in estimating its prevalence. The reported prevalence of SM of 9.56 per 100000 persons[10] is probably underestimated; in the last few years, improved knowledge of the disease and availability of diagnostic tests suggested a higher prevalence, with the newer prevalence reported to be 21 per 100000 inhabitants in the adult population[11].

Mastocytosis diagnosis is based on the identification of atypical MCs in the affected tissue, according to the well-established WHO criteria, based on morphological, histological, cytofluorimetric, and molecular features[5,6] (Table 1). When the major and at least one minor SM criterion or three minor SM criteria are detected, the diagnosis SM is established. SM patients can be further sub-classified depending on the presence of B (organ involvement without organ failure) or C (organ involvement with organ dysfunction) findings, defining MCs burden or disease aggressiveness, respectively[1,5,6] (Table 2).

The severity of the symptoms associated with mastocytosis may vary from mild to life-threatening [2]. In general, symptoms occurring in SM are mainly due to the release of chemical mediators from the MCs, such as histamine, heparin, and eosinophil chemotactic factor, and thus produce symptoms associated with an allergic reaction, although a true allergic trigger may not be identified. In ASM, where MCs infiltration occurs, a decrease in blood cells (cytopenia), break-down of bones (osteolysis), swelling of the lymph nodes (lymphadenopathy), swelling of the liver (hepatomegaly), impaired liver function, ascites or portal hypertension, and malabsorption may occur[1,12,13].

Symptom-directed treatment should be considered in all SM patients[2]. Supportive therapies for SM are directed at MC's degranulation symptoms [histamine-receptors 1 (H1) and 2 (H2) antagonists, proton pump inhibitors (PPI), leukotriene antagonist, sodium cromolyn, corticosteroid], symptomatic skin disease (Psolarene plus ultraviolet A photo-chemotherapy, corticosteroids), and/or osteopenia/osteoporosis/pathologic fractures (bisphosphonate, cytokine/ immunomodulatory drugs) [2,14,15]. Treatment goals for ISM patients are primarily directed towards anaphylaxis prevention and

Table 1 Systemic mastocytosis criteria according to World Health Organization 2016

Major SM criterion	Multifocal dense infiltrates of MCs (≥ 15 MCs in aggregates) in BM biopsies and/or in sections of other extracutaneous organ(s)
Minor SM criteria	(a) $> 25\%$ of all MCs are atypical cells (type I or type II) on BM smears or are spindle-shaped in MC infiltrates detected on sections of visceral organs (b) KIT point mutation at codon 816 in the BM or another extracutaneous organ (c) MCs in BM or blood or another extracutaneous organ exhibit CD2 and/or CD25 (d) Baseline serum tryptase level >20 ng/mL (in case of an unrelated myeloid neoplasm, item d is not valid as an SM criterion)

If at least 1 major and 1 minor or 3 minor systemic mastocytosis (SM) criteria are fulfilled, the diagnosis of SM can be established. BM: Bone marrow; MCs: Mast cells; SM: Systemic mastocytosis.

Table 2 B and C Findings in systemic mastocytosis

B and C Findings in systemic mastocytosis	
B Findings	
BM biopsy showing $> 30\%$ infiltration by MCs (focal, dense aggregates) and serum total tryptase level > 200 ng/mL	
Myeloproliferation or signs of dysplasia in non-MC lineage(s), no prominent cytopenias; criteria for AHN not met	
Hepatomegaly and/or splenomegaly on palpation without impairment of organ function and/or lymphadenopathy on palpation/imaging (> 2 cm)	
C Findings¹	
Cytopenia(s): ANC $< 1 \times 10^9/L$, Hb < 10 g/dL, or platelets $< 100 \times 10^9/L$	
Hepatomegaly on palpation with impairment of liver function, ascites, and/or portal hypertension	
Skeletal lesions: Osteolyses and/or pathologic fractures	
Palpable splenomegaly with hypersplenism	
Malabsorption with weight loss from gastrointestinal tract MC infiltrates	

¹Must be attributable to the mast cell infiltrate. AHN: Associated hematological neoplasm; ANC: Absolute neutrophilic count; BM: Bone marrow; MCs: Mast cells.

symptom control/osteoporosis treatment. Patients with advanced SM frequently need MCs cytoreductive therapy to ameliorate disease-related organ dysfunction[2]. High response rates have been seen with small-molecules inhibitors that target mutant-KIT, including midostaurin (Food and Drug Administration and European Medicine Agency approved) or avapritinib (Food and Drug Administration approved)[2,16-19].

In this review, we sought to focus on clinical, pathophysiological, histological, and therapeutic aspects of GI tract involvement in SM.

GI CLINICAL MANIFESTATIONS OF SM

GI involvement in the clinical presentation of SM has been reported to vary from 15% to 85%. The wide range of variability is probably due to variable definitions of GI symptoms and differences in the attention on GI involvement in the case series available in the literature[20]. However, among all clinical manifestations, GI symptoms appear to be second in frequency only to itching[21] and are the main culprits of chronic disorders being a major determinant of quality of life (QoL)[20-22].

GI symptoms can be varied and may be independent of a clear GI involvement with mastocytes' infiltration[23]. In addition, GI manifestations may occur in the absence of typical cutaneous manifestations, with GI dysfunction being observed in both cutaneous mastocytosis and SM[24]. Although the gastro-enteric tract involvement has been described in all SM variants, both the frequency and the type of GI symptoms vary according to the SM subtype.

GI symptoms associated with SM are often non-specific and mimic common conditions, such as irritable bowel syndrome, inflammatory bowel disease, or celiac disease, with recurrent abdominal pain, nausea, vomiting, gastro-esophageal reflux disease, diarrhea, and bloating, until more severe pictures characterized by long-standing, persistent, and intractable diarrhea with malabsorption occurs[23]. Also, peptic ulcer disease represents a GI manifestation of SM, causing gastro-duodenal ulceration in up

to 50% of cases[25], with possible severe GI bleeding sustained by the large amount of histamine released by mast cells (Table 3).

PATHOPHYSIOLOGY OF GI INVOLVEMENT

From the pathophysiological point of view, these symptoms are caused by several mechanisms. Activation of MCs causes alteration in epithelial and neuromuscular function. MCs represent 2% of the cells present on the intestinal mucosa of the GI tract[26]: They are responsible for a series of regulatory functions concerning the barrier functions and vascular mucosal permeability, regulating the secretion of GI hormones, modulating peristalsis and the pain perception threshold, and regulating the endothelial barrier and chemotaxis of immune cells. They, therefore, intervene in the regulation of the inflammatory response and, as recently described, they drive the immune response by attracting both granulocytes and lymphocytes and triggering innate defense mechanisms, such as enhanced epithelial secretion, peristalsis, and alarm programs of the enteric nervous system[26,27].

Activated MCs release various inflammatory mediators, which determine intestinal motility alteration, visceral sensitivity alteration, and mucosal and epithelial gut barrier function alteration. Furthermore, MCs inflammatory mediators determine hypersecretion and increased motility, causing diarrhea and abdominal pain. In the more advanced and aggressive stages, there is a direct MC infiltration of the GI tract and the pathogenic mechanisms change. The GI tract can be involved in any phase of SM and the pathophysiological mechanisms are different. As well as reported for other extra-hematological manifestations of SM, in the initial and indolent forms of SM, the gut is a target of mediators released by MCs and functional disorders are more expressed, with mediator-related functional diarrhea, abdominal pain, and motor dyspepsia.

Thereafter, with the massive and persistent mediators' release, organic lesions appear, such as peptic disease. The main mediator released by MCs is histamine which exerts different effects on both the upper and lower gastrointestinal tract. Histamine interacts with H2 receptors, promoting the secretion of hydrochloric acid, resulting in gastroesophageal reflux disease, gastritis, and peptic ulcer.

The peptic ulcer due to the increase in histamine-related acid secretion is a condition not rarely observed in SM, and it is largely underestimated: It is reported in up to 40% of patients with SM. It does not correlate with circulating markers, in particular with circulating histamine; therefore, it has to be hypothesized with a low threshold of suspicion and then investigated with gastroscopy. Moreover, peptic ulcer bleeding in MS is also reported in up to 11% of patients[25]. Histamine also interacts with the H1 receptors, regulating the gut smooth muscle contraction, causing impaired peristalsis and motility disorders, clinically resulting in the dysmotility-like dyspepsia and functional diarrhea observed in patients in the early stages of SM.

Besides the GI effects of histamine, other transmitters are released in the course of SM, including prostaglandins and serotonin, which have various effects, including effects mainly on the neuromuscular junction of the GI tract, with consequently impaired motility and visceral hypersensitivity. Again, patients present with nausea, vomiting, and abdominal pain worsened by the reduction of the pain threshold. In the course of mastocytosis, diarrhea is often associated with flushing. Therefore, is important to distinguish "wet flushing", associated with profuse sweating, and "dry flushing", without sweating (Table 3). In SM, dry flushing is observed, whereas "wet flushing" is more related to physiological or para-physiological causes.

In the more advanced and aggressive stages of MS, the manifestations are mainly related to the gut MC infiltration of the GI wall, which impairs both the barrier functions and the absorbing functions, and the pathogenic mechanisms of diarrhea change from a functional to organic diarrhea. As the disease progresses, the clinical picture evolves into malabsorption, progressive caloric-protein malnutrition, vitamin deficiency, deterioration of the patient's condition, worsening of osteoporosis (already present in these patients), and finally anasarca, due to a complete impaired gut absorption and barrier function.

Mast cell mediators-related GI abnormalities

The release of a great amount of histamine and other peptides contained in MC granules has been implicated in the pathogenesis of a variety of functional GI manifestations in SM, including diarrhea, bloating, nausea, vomiting, abdominal pain, peptic ulcer disease, and related GI bleeding.

A recent multicenter French study analyzing a cohort of 83 patients affected by SM has demonstrated that GI symptoms are more frequent in SM patients compared to matched healthy subjects. Moreover, SM is correlated with a significantly greater risk of developing peptic ulcer disease, especially duodenal ulcers[28]. Diarrhea, bloating and abdominal pain have been reported as the most frequent SM-associated GI disturbances in several studies[20,22,25,29].

Abdominal pain has been described in different case series with a wide range of frequency from 12% to 100%. Of note, Cherner and colleagues[25] identified two different types of abdominal pain. The majority of SM patients suffered from an abdominal pain of dyspeptic nature, defined as an epigastric pain responsive to antacids and histamine type 2 receptor antagonists and with a high incidence of peptic disease on upper gastrointestinal endoscopic examination. A minority of patients complained of

Table 3 Differential diagnosis between systemic mastocytosis and gastrointestinal diseases

Symptoms	Differential diagnosis
Chronic diarrhea	Irritable bowel syndrome; Inflammatory bowel disease; Celiac disease; Thyreopathies (<i>i.e.</i> hyperthyroidism, medullary thyroid cancer); Pancreatopathies
Epigastric pain, dyspepsia, heartburn	Functional dyspepsia; Peptic ulcer; Gastroesophageal reflux disease; H. pylori related gastritis; Zollinger-Ellison Syndrome
Flushing	Neuroendocrine neoplasms
Hepato-splenomegaly, portal hypertension	Cirrhosis; Non cirrhotic portal hypertension

non-dyspeptic pain associated with bloating that does not benefit from histamine 2 receptor antagonists and antacids and was associated with normal endoscopic investigations. While the pathogenesis of the first pain type may be easily correlated to increased acid secretion, the non-dyspeptic pain type is more likely related to intestinal motility disturbances and a lower pain threshold caused not only by an increased release of histamine but also by other mediators, such as serotonin, prostaglandins, and neuropeptides.

Functional diarrhea has been reported in several series of SM patients with a range from 14% to 100%. The presence of diarrhea has been described as an episodic increase in bowel movements with subsequent emission of liquid stool that may or may not be associated with a fecal weight > 200 g/d [20]. It may be related to increased gastric acid secretion with mechanisms similar to Zollinger Ellison syndrome and/or to increased bowel motility induced by prostaglandin D2 secretion, as there is evidence of cases of diarrhea responsive to aspirin administration[30]. In contrast, the presence of steatorrhea has been correlated with a condition of malabsorption characteristic of advanced mastocytosis with extensive mucosal and submucosal infiltration with MCs.

Nausea and vomiting have been described less frequently and usually as components of syndromic disorders that also include palpitations, flushing, abdominal cramps, and diarrhea, generally exacerbated by the ingestion of certain substances, such as alcohol and medications, or contact with inflammatory mediators, which stimulate MCs degranulation. The absence of specific colonic symptoms does not mean that the colon or rectum are not involved. In particular, rectal manometric studies show a lower distention threshold to induce pain or rectal urgency; patients complain of reduced rectal compliance or overactive rectal contractility.

Peptic ulcer disease

One of the most common mediator-related clinical signs, which over time can generate organic lesions and GI organic damage, is related to gastric acid hypersecretion secondary to the hyper-histaminic state, which leads to dyspeptic pain and digestive ulcer disease.

A prospective study shows that peptic ulcers in SM are common, present in up to 50% of patients [25]. It is usually symptomatic and associated with gastric acid hypersecretion and elevated basal acid output (BAO)[31]. In some patients, BAO can reach the Zollinger-Ellison range, so that may even cause the signs and symptoms of the syndrome itself[20]. Of interest, a particular form of CM, the so-called *telangiectasia macularis eruptiva perstans*, also known as paucicellular mastocytosis, has been associated with peptic giant gastro-duodenal ulcers[32]. Other acid-related complications have been reported, such as ulcer perforation and severe esophagitis. Moreover, up to 11% of SM-affected patients will manifest peptic ulcer bleeding during the disease course. However, so far there has been no evidence of a consistent relationship between the level of serum histamine and the presence of ulcer disease or gastric acid output. However, despite the increased circulating histamine level, many patients have normal acid secretion and in some cases, even achlorhydria has been observed[31]. The variability in the response to circulating histamine may relate to partial inactivity of circulating histamine, differences between circulating histamine and gastric tissue histamine, and the intervention of unknown cofactors in the stimulation of oxyntic cells, as well as the theory of possible desensitization of parietal cells that can justify the rare cases of complete achlorhydria[20].

Mast cell infiltration-related GI abnormalities

In patients with advanced SM, the B and C findings (Table 2) become prevalent to functional GI symptoms. B GI findings indicate organ involvement without organ dysfunction, while C GI-findings refer to the advanced stage where both organ infiltration and dysfunction coexist, being associated with a poor prognosis[6]. They include malabsorption, weight loss, and organomegaly (spleen, liver) until full-blown organ dysfunction leads to hepatic failure and ascites.

Malabsorption based on quantitative stool fat analysis, D-xylose, and Schilling tests has been found to occur in one-third of SM patients and is usually mild[32]. Thus, it is important to consider mastocytosis in the diagnostic work-up of chronic and intractable diarrhea, especially when the endoscopic presentation seems to be suggestive. Both the small and the large intestine can undergo permanent

alterations, which contribute to the genesis of diarrhea and malabsorption. Over time, patients could develop real intestinal malabsorption syndrome with vitamins A and D deficiency, overt osteomalacia and osteoporosis, protein-energy malnutrition, and anasarca. The whole gastrointestinal tract may be involved in SM with varying degrees.

Liver involvement in SM can range from an abnormal liver function test alone to hepatomegaly due to MC and eosinophil infiltrates in portal triads. Initial fibrosis can evolve in cirrhosis with worsening portal hypertension sustained by simultaneous splenomegaly, with or without hypersplenism, and ultimately ascites and upper digestive bleeding from esophageal varices. Of note, mastocytosis is one of the causes of non-cirrhotic portal hypertension[33], sustained by pre-sinusoidal and sinusoidal mechanisms through the infiltration of inflammatory mast cells within the portal vein and obstruction of the sinusoids[34]. In this setting, we can also observe vascular alterations, like portal hypertension, veno-occlusive disease (8%), and Budd-Chiari syndrome.

No studies have identified how many patients with SM develop portal hypertension, but in real medical practice, clinicians have to keep in mind that it can occur without associated advanced liver disease, further increasing the risk of upper GI bleeding. A study of 24 cases of SM involving the GI tract found only 3 patients with liver involvement; however, liver involvement correlates with more aggressive disease[23]. Moreover, as liver failure occurs, it contributes to worsening malnutrition and hypoalbuminemia that are already determined by intestinal insufficiency.

ENDOSCOPIC FINDINGS IN SM

Even though no remarkable endoscopic findings could be found[4], there are several endoscopic pictures described in SM, and endoscopic findings could be secondary both to MC mediator release and to MC infiltration in the GI wall or liver.

Upper gastrointestinal endoscopy

At upper GI endoscopy, peptic disease (esophagitis, esophageal strictures, peptic ulcer) is one of the most frequent findings in patients with SM[21].

According to the literature, upper GI involvement could be found in up to 40% of SM patients undergoing endoscopy[25] and may be sustained by chlorhydric acid hypersecretion. However, its pathogenesis is still uncertain: Peptic disease is thought to be secondary to gastric acid hypersecretion sustained by elevated histamine plasma levels, but data from literature are controversial: Hypersecretion of gastric acid does not seem to be consistently related to the level of serum histamine levels measured. It may, however, be possible that a relationship between tissue concentration of histamine and GI manifestations can exist[25].

While esophagitis and, when untreated, esophageal strictures are thought to be secondary to mediator release, esophageal varices could be accounted for SM endoscopic findings when liver infiltration is present; this infiltration determines intrahepatic portal hypertension with esophageal and gastric varices development[33-35].

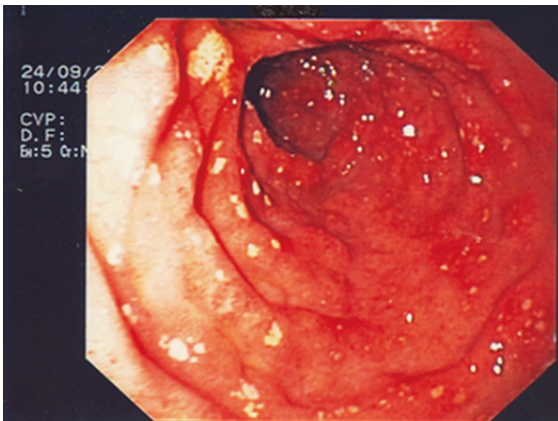
Exploration of the stomach and duodenum could show urticaria-like lesions in the antrum of the stomach, diffuse telangiectasia, multiple erosions of gastric and/or duodenal mucosa (Figure 1) and peptic ulcer; these findings are thought to be secondary to MCs mediators' release (*i.e.*, histamine, serotonin, prostaglandins, and neurotensin). When atypical mastocyte infiltration occurs, nodular mucosal lesion of the stomach and/or duodenum can be found[21,36,37].

Small bowel endoscopy and colonoscopy

Small bowel, as well as other digestive tract components, could be involved by SM. From the review of literature, the most common findings during small bowel exploration are diffuse telangiectasia, thickened jejunal folds, scalloped folds, and diffuse nodularity[21,36]. As for the upper GI tract, diffuse telangiectasia and thickened jejunal folds are thought to be secondary to MC mediator release, while scalloped folds and diffuse nodularity are thought to be secondary to MC infiltration in the GI wall[21].

Colonoscopy in patients with SM can reveal diffuse telangiectasia and/or urticarial lesion, patchy mucosal erythema, as well as mucosal edema, mucosal friability, loss of vascular patterns, and diffuse nodularity. Moreover, adding indigo carmine dye spraying could be useful to enhance yellowish-white polypoid lesions and yellowish-white nodular or granular mucosal lesions[36,38,39].

As for the other GI tracts, mucosal erythema and edema, mucosal friability are thought to be secondary to MC mediator release, while loss of vascular patterns and nodular and /or polypoid lesions are thought to be secondary to MCs infiltration into the bowel wall[21]. Unfortunately, none of these endoscopic signs is specific for GI involvement of SM; hence, biopsy specimens of the GI wall should always be performed in order to have histological diagnostic confirmation of GI involvement.



DOI: 10.3748/wjg.v28.i29.3767 Copyright ©The Author(s) 2022.

Figure 1 Endoscopic pictures of second portion of the duodenum. The mucosa appears to be erythematous, hyperemic, and covered with diffuse erosions.

HISTOPATHOLOGICAL ASPECT IN SM

Mast cells (MCs) are unique granulated cells (approximately 20 μm) that are absent in peripheral blood. They develop *in situ* from CD34-positive or c-Kit-positive progenitor cells[40]. MCs are distributed throughout many tissues, including the gastrointestinal mucosa. They enable an immune function in response to a diversity of exogenous substances in the gut lumen[41].

Within the gut, two subpopulations can be distinguished: the mucosal reactive MCs, which may dramatically increase in response to immune stimuli and are dependent on T lymphocytes[42,43], and the submucosal MCs, which can act in the regulation of intestinal permeability, secretion, peristalsis, nociception, immunity, and angiogenesis[44]. The histologic appearances of the GI mucosa in SM patients are incompletely described[45]. Results of mucosal mast cell quantitation have similarly been mixed with some studies reporting increased, decreased, and normal numbers of mucosal mast cells in patients with SM compared with controls[46].

The mean normal value of MCs count in normal GI mucosa is yet to be validated in large patient cohorts; most studies consider a cutoff of 20 MCs per high-power field within the lamina propria, this value being 2 standard deviations above that found in the general population[47,48]. As MC infiltrate can be focal and mild, the diagnosis of mastocytosis in GI mucosal biopsies can be challenging; hence, multiple biopsies are necessary in order to improve diagnostic yield[28].

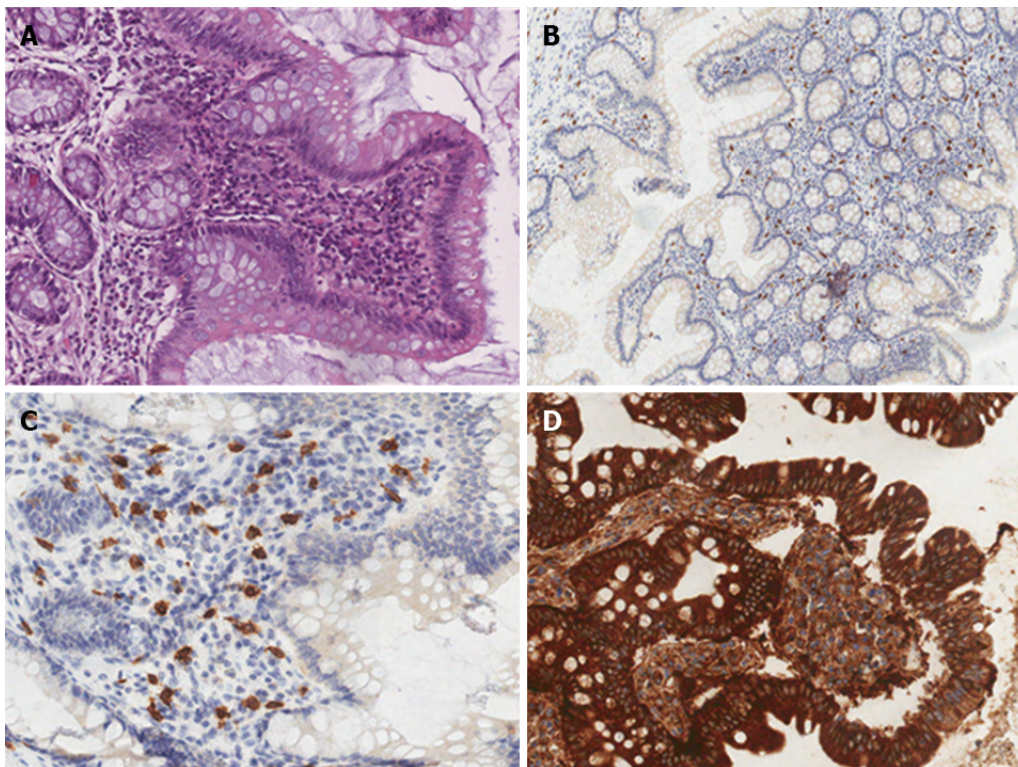
In almost all cases of SM involving the GI tract, the number of intramucosal MCs is substantially increased[23], and MCs group together forming pathognomonic compact micronodular or band-like infiltrate. Tiny clusters of cells, with a predominant sub-epithelial distribution, appear in different shapes, varying from rounded cells with a moderate amount of pale and eosinophilic cytoplasm to ovoid and spindle-shaped cells with scant cytoplasm. Those diagnostic infiltrates may be small but should consist at least of 15 clusterings[23].

Hematoxylin and eosin staining are not a definitive method for MCs detection, hence special staining is required, such as toluidine blue staining and immuno-histo-chemical panels using tryptase, CD117, and CD25[49]. Comparison between these techniques confirmed a stem cell factor receptor kit (testing for c-kit and CD117) is the most accurate technique[50]. CD117 is expressed on all types of MCs independent of maturation and activation status; in SM, c-Kit is often expressed in MCs in a mutated and constitutively activated form. In these patients, MCs aberrantly display CD25, a diagnostic marker of neoplastic MCs in all SM variants[51]. Therefore, CD117 is sensitive, but not specific for MCs; tryptase is less sensitive but more specific. Both CD117 and tryptase are not diagnostic of the neoplastic nature, whereas CD25 expression is considered a hallmark of MCs atypia[4] (Figure 2).

SM may involve other GI organs like the liver. The main site of liver involvement is the portal tract, where MCs may form groups of dense infiltrates within the fibrotic portal triads; because MCs are normally absent in the sinusoid, the presence of scattered MCs in liver sinusoids is also consistent with SM (Figure 3).

TREATMENT OF GI SYMPTOMS

Symptom-directed treatments should be considered in all SM patients and are directed at MC degranulation symptoms (*i.e.* nausea, vomiting, abdominal pain, peptic disease, diarrhea)[2].



DOI: 10.3748/wjg.v28.i29.3767 Copyright ©The Author(s) 2022.

Figure 2 Spectrum of histologic findings in patients with intestinal involvement of systemic mastocytosis. A: A mild initial finding with mast cells arranged in sheets and micro aggregates (hematoxylin-eosin, $\times 10$). A heavy eosinophil infiltrate frequently dominates the picture. Crypt architectural distortion, without any other evidence of inflammatory bowel disease. Scattered lymphocytes and plasma cells often accompanied the mast cell and eosinophil infiltrates; B-C: The mast cells show expression of c-kit (B; CD117, $\times 2$) and tryptase (C; $\times 10$); D: CD25 positive cells in a clearcut and spread duodenal mastocytosis (CD25, $\times 10$).

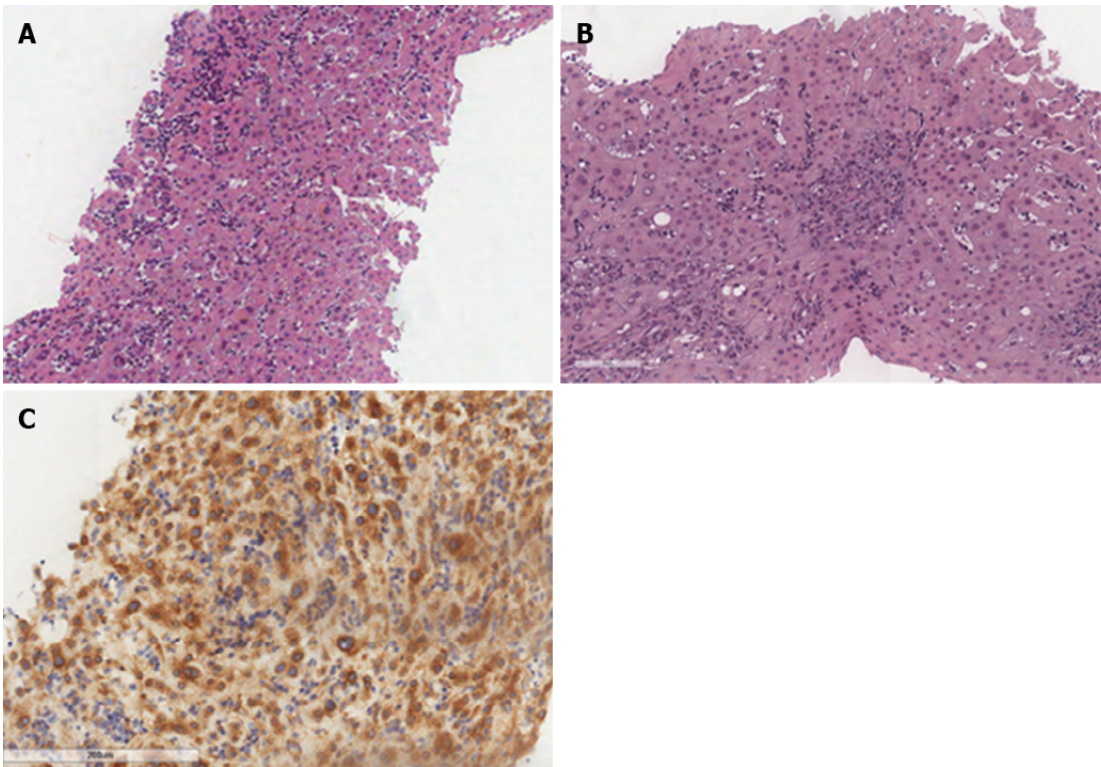
As first step, patients must recognize and avoid general and specific individual factors that trigger symptoms. These can commonly include physical factors such as heat, temperature changes, some forms of exercise, emotions, stress, sleep deprivation; diagnostic and therapeutic agents (such as opiates, NSAIDs, succinylcholine, and agents with tetrahydroisoquinoline, atracurium, rocuronium, and quinolones), foods, alcohol and Hymenoptera venoms[52].

Different symptomatic drugs have been proposed for the control of GI symptoms: H₂- antagonists (*i.e.*, Famotidine 10 mg BID, Cimetidine 400 mg BID) are the first-line therapy[2]. They act as inverse agonists that combine with and stabilize the inactive conformation of the histamine-receptor, shifting the equilibrium toward the inactive state; in a concentration-dependent manner, they inhibit MC activation and histamine release. However, although, the mechanisms involved have not yet been delineated fully, downregulation of intracellular calcium ion accumulation seems to play a role[53]. Inactivation of histamine receptors reduces the histamine effect along the GI tract, hence reducing histamine-related symptoms (*i.e.*, diarrhea, abdominal pain, peptic disease).

When histamine-receptor blockers are poorly effective or ineffective, proton pump inhibitors (PPIs, *i.e.*, Omeprazole 20 mg/d, Rabeprazole 20 mg/d, Pantoprazole 40 mg/d) represent second-line therapy [2]. Hydrochloric acid is secreted by parietal cells in the oxyntic mucosa that lines the body and the fundus of the stomach as a response to different mediators (*i.e.*, histamine, gastrin, acetylcholine), that activate H⁺/K⁺ ATP-ase (*i.e.*, the proton pump) that pumps hydrogen ions (protons) into the lumen in exchange for potassium ions. PPIs block this final step in gastric acid secretion by blocking H⁺/K⁺ ATP-ase irreversibly. They are remarkably effective in the inhibition of gastric acid secretion[54]. Considering SM as a hypersecretory condition, it is clear that reducing hydrochloric acid secretion is beneficial in SM patients because it reduces peptic symptoms, peptic disease, and/or diarrhea.

Sodium cromolyn (100-200 mg QID 30 minutes before meals and bedtime) represents the third-line therapy when H₂ antagonists and PPIs are ineffective[2]. It works as an inhibitor of histamine release and cell membrane stabilizer: cromolyn sodium caused weak inhibition of histamine release. However, different studies have shown its action on other mediators involved in mast cells' degranulation by inhibiting prostaglandin D₂ release and TNF α release from mast cells, hence reducing MC degranulation and mediator release[55]. Reducing mediator release should help reduce GI symptoms.

Pardanani[2] has proposed systemic corticosteroid (*i.e.* prednisone 0.5-1 mg/kg/d starting dose; taper as feasible based on response/tolerance), as the fourth line of therapy for GI symptoms resistant to previous symptomatic therapies. Corticosteroids are potent anti-inflammatory drugs widely used in the treatment of allergic and inflammatory diseases. They also showed an in-vitro inhibition of MCs



DOI: 10.3748/wjg.v28.i29.3767 Copyright ©The Author(s) 2022.

Figure 3 Frustules of hepatic parenchyma with substantially preserved structure, with trabeculae with 2-cell spinnerets with no significant steatosis, but focal balloon-like degeneration associated with biliary stasis phenomena. A: Biliary spaces with preserved ducts, with ductular regeneration and bilio-hepatocyte metaplasia (hematoxylin-eosin, $\times 4$); B: Some phenomena of hepatitis with aggression of the biliary epithelium are observed (hematoxylin-eosin, $\times 20$). Portal spaces enlarged due to the presence of mixed inflammatory infiltrates, mainly consisting of T lymphocytes (CD3 +) with initial fibrotic expansion and formation of porto-portal bridges; C: In this context, scattered CD117 +, tryptase + cells ($\times 20$) referable to mast cells.

mediators' release. Systemic administration of corticosteroids has been used in patients with mastocytosis. While this treatment appears to improve control of some mediator-release symptoms, it has not been proven to reduce MC numbers significantly in patients with mastocytosis[56]. Of note, systemic corticosteroids have been useful in decreasing the malabsorption and ascites in some of these patients[57].

In advanced SM, treatments interfering with MC proliferation and survival are used[2]. GI symptoms secondary to organ infiltration could also benefit from cytoreductive therapies, such as 2-chlorodeoxyadenosine (cladribine or 2-CdA) or interferon-alfa[58]. In young and otherwise healthy ASM patients, allo-SCT is the only option for a sustained response[59]. Promising effects have been seen with the use of targeted therapy on mutated-KIT, which occurs in most SM patients[2]. Midostaurin (PKC412) is the first kit-inhibitor recent approved by the United States Food and Drug Administration (FDA) and European Medicines Agency (EMA) for the treatment of Advanced SM[16,17]. It has *in vitro* activity against kinase domain KIT mutants (D816Y and D816V). In the global Phase 2 CPKC412D2201 trial[18], 116 patients with advanced SM were enrolled; patients were treated with PKC412 at 100 mg BID. The overall response rate (ORR) per conventional criteria was 60% with 45% having a major response and 15% having a partial response, but it is often not sustained. In particular, concerning GI involvement, reversal of organ damage was reflected by normalization of hypoalbuminemia (58%), improvement in liver function test abnormalities (44%-58%), and/or reversion of weight loss (25%). Patients reported improvement of disease-related symptoms with treatment. Therefore, the most common drug side effects (all grades/grades 3-4) were nausea (79%/6%), vomiting (66%/6%), diarrhea (54%/3%), and fatigue (28%/9%), in addition to hematological toxicity, in terms of grade 3-4 of neutropenia, anemia, and thrombocytopenia, occurring in 24%, 41%, and 29% of patients, respectively.

Avapritinib[19], a KIT and PDGFRA inhibitor, showed promising results; other medications potentially effective for SM patients are under investigation[2]. Further optimization of treatment with tyrosine-kinase inhibitors in order to improve patients' quality of life is still needed.

CONCLUSION

Mastocytosis is a rare and heterogeneous disease characterized by various biological and clinical

features with different prognosis and treatments. The disease is usually divided into 2 principal categories: CM and SM. Clinical features can be related to MCs mediators release or pathological MCs infiltration. The diagnosis of SM is based on clinical, biological, histological, and molecular criteria, according to WHO 2016 classification. A proper patient's workup requires a multidisciplinary approach including gastroenterologists, endoscopists, hematologists, and pathologists. Among all manifestations of the disease, GI symptoms are common, being present in 15%-85% of the patients and can significantly impair the quality of life. Here, we review the data regarding GI involvement in SM, in terms of clinical presentations, histological features, pathogenesis of GI symptoms and their treatment. The most frequent GI symptoms are abdominal pain, diarrhea, nausea, and vomiting. GI lesions may involve all the digestive tract, from the esophagus to the rectum. The histological diagnosis of GI involvement is difficult. The treatment of GI symptoms aims to prevent and limit MCs degranulation and/or its consequences and more rarely to control tumoral mast cells infiltration. The diagnosis of mastocytosis should be considered in the case of unexplained severe GI disorders.

ACKNOWLEDGEMENTS

Massironi S and Invernizzi P are members of the European Reference Network on Hepatological Diseases (ERN RARE LIVER) and they thank AMAF Monza Onlus and AIRCS.

FOOTNOTES

Author contributions: Elvevi A, Elli EM, and Massironi S designed the study; Elvevi A, Elli EM, Lucà M, and Scaravaglio M wrote the first draft of the paper; Pagni F, Ceola S, and Ratti L revised the paper and wrote the final version; Massironi S and Invernizzi P reviewed the paper for important intellectual content; all authors have read and approved the final manuscript.

Conflict-of-interest statement: All authors report no relevant conflict of interest for this article.

Open-Access: This article is an open-access article that was selected by an in-house editor and fully peer-reviewed by external reviewers. It is distributed in accordance with the Creative Commons Attribution NonCommercial (CC BY-NC 4.0) license, which permits others to distribute, remix, adapt, build upon this work non-commercially, and license their derivative works on different terms, provided the original work is properly cited and the use is non-commercial. See: <https://creativecommons.org/licenses/by-nc/4.0/>

Country/Territory of origin: Italy

ORCID number: Alessandra Elvevi 0000-0001-9841-2051; Elena Maria Elli 0000-0001-5576-5412; Martina Lucà 0000-0003-3787-6973; Miki Scaravaglio 0000-0003-2914-4908; Fabio Pagni 0000-0001-9625-1637; Stefano Ceola 0000-0002-5815-987X; Laura Ratti 0000-0003-0198-6433; Pietro Invernizzi 0000-0003-3262-1998; Sara Massironi 0000-0003-3214-8192.

S-Editor: Wu YXJ

L-Editor: Filipodia

P-Editor: Wu YXJ

REFERENCES

- 1 **Horny H**, Akin C, Arber D, Peterson L, Tefferi A, Metcalfe D, Bennet J, Bain B, Escribano L, Valent P. WHO Classification of Tumours of Haematopoietic and Lymphoid Tissues. Revised 4th Ed. Lyon, France: IARC, 2017
- 2 **Pardanani A**. Systemic mastocytosis in adults: 2021 Update on diagnosis, risk stratification and management. *Am J Hematol* 2021; **96**: 508-525 [PMID: 33524167 DOI: 10.1002/ajh.26118]
- 3 **Valent P**, Akin C, Escribano L, Födinger M, Hartmann K, Brockow K, Castells M, Sperr WR, Kluin-Nelemans HC, Hamdy NA, Lortholary O, Robyn J, van Doormaal J, Sotlar K, Hauswirth AW, Arock M, Hermine O, Hellmann A, Triggiani M, Niedoszytko M, Schwartz LB, Orfao A, Horny HP, Metcalfe DD. Standards and standardization in mastocytosis: consensus statements on diagnostics, treatment recommendations and response criteria. *Eur J Clin Invest* 2007; **37**: 435-453 [PMID: 17537151 DOI: 10.1111/j.1365-2362.2007.01807.x]
- 4 **Zanelli M**, Pizzi M, Sanguedolce F, Zizzo M, Palicelli A, Soriano A, Bisagni A, Martino G, Caprera C, Moretti M, Masia F, De Marco L, Froio E, Foroni M, Bernardelli G, Alvarez de Celis MI, Giunta A, Merli F, Ascani S. Gastrointestinal Manifestations in Systemic Mastocytosis: The Need of a Multidisciplinary Approach. *Cancers (Basel)* 2021; **13** [PMID: 34282774 DOI: 10.3390/cancers13133316]
- 5 **Arber DA**, Orazi A, Hasserjian R, Thiele J, Borowitz MJ, Le Beau MM, Bloomfield CD, Cazzola M, Vardiman JW. The 2016 revision to the World Health Organization classification of myeloid neoplasms and acute leukemia. *Blood* 2016; **127**: 2391-2405 [PMID: 27069254 DOI: 10.1182/blood-2016-03-643544]

- 6 **Valent P**, Horny HP, Escribano L, Longley BJ, Li CY, Schwartz LB, Marone G, Nuñez R, Akin C, Sotlar K, Sperr WR, Wolff K, Brunning RD, Parwaresch RM, Austen KF, Lennert K, Metcalfe DD, Vardiman JW, Bennett JM. Diagnostic criteria and classification of mastocytosis: a consensus proposal. *Leuk Res* 2001; **25**: 603-625 [PMID: [11377686](#) DOI: [10.1016/s0145-2126\(01\)00038-8](#)]
- 7 **Li Z**. New Insights into the Pathogenesis of Systemic Mastocytosis. *Int J Mol Sci* 2021; **22** [PMID: [34063170](#) DOI: [10.3390/ijms22094900](#)]
- 8 **Garcia-Montero AC**, Jara-Acevedo M, Teodosio C, Sanchez ML, Nunez R, Prados A, Aldanondo I, Sanchez L, Dominguez M, Botana LM, Sanchez-Jimenez F, Sotlar K, Almeida J, Escribano L, Orfao A. KIT mutation in mast cells and other bone marrow hematopoietic cell lineages in systemic mast cell disorders: a prospective study of the Spanish Network on Mastocytosis (REMA) in a series of 113 patients. *Blood* 2006; **108**: 2366-2372 [PMID: [16741248](#) DOI: [10.1182/blood-2006-04-015545](#)]
- 9 **Pardanani A**, Lasho T, Elala Y, Wassie E, Finke C, Reichard KK, Chen D, Hanson CA, Ketterling RP, Tefferi A. Next-generation sequencing in systemic mastocytosis: Derivation of a mutation-augmented clinical prognostic model for survival. *Am J Hematol* 2016; **91**: 888-893 [PMID: [27214377](#) DOI: [10.1002/ajh.24426](#)]
- 10 **Cohen SS**, Skovbo S, Vestergaard H, Kristensen T, Møller M, Bindslev-Jensen C, Fryzek JP, Broesby-Olsen S. Epidemiology of systemic mastocytosis in Denmark. *Br J Haematol* 2014; **166**: 521-528 [PMID: [24761987](#) DOI: [10.1111/bjh.12916](#)]
- 11 **Zanotti R**, Tanasi I, Bernardelli A, Orsolini G, Bonadonna P. Bone Marrow Mastocytosis: A Diagnostic Challenge. *J Clin Med* 2021; **10** [PMID: [33915965](#) DOI: [10.3390/jcm10071420](#)]
- 12 **Alto WA**, Clarcq L. Cutaneous and systemic manifestations of mastocytosis. *Am Fam Physician* 1999; **59**: 3047-3054, 3059
- 13 **Nedoszytko B**. Mastocytosis in children and adults: clinical disease heterogeneity. Archives of medical science: AMS (e-pub ahead of print 20 November 2021)
- 14 **Orsolini G**, Viapiana O, Rossini M, Bonifacio M, Zanotti R. Bone Disease in Mastocytosis. *Immunol Allergy Clin North Am* 2018; **38**: 443-454 [PMID: [30007462](#) DOI: [10.1016/j.iac.2018.04.013](#)]
- 15 **Brazzelli V**, Grassi S, Merante S, Grasso V, Ciccocioppo R, Bossi G, Borroni G. Narrow-band UVB phototherapy and psoralen-ultraviolet A photochemotherapy in the treatment of cutaneous mastocytosis: a study in 20 patients. *Photodermatol Photoimmunol Photomed* 2016; **32**: 238-246 [PMID: [27353865](#) DOI: [10.1111/phpp.12248](#)]
- 16 **Growney JD**, Clark JJ, Adelsperger J, Stone R, Fabbro D, Griffin JD, Gilliland DG. Activation mutations of human c-KIT resistant to imatinib mesylate are sensitive to the tyrosine kinase inhibitor PKC412. *Blood* 2005; **106**: 721-724 [PMID: [15790786](#) DOI: [10.1182/blood-2004-12-4617](#)]
- 17 **Gleixner KV**, Mayerhofer M, Aichberger KJ, Derdak S, Sonneck K, Böhm A, Gruze A, Samorapoompichit P, Manley PW, Fabbro D, Pickl WF, Sillaber C, Valent P. PKC412 inhibits in vitro growth of neoplastic human mast cells expressing the D816V-mutated variant of KIT: comparison with AMN107, imatinib, and cladribine (2CdA) and evaluation of cooperative drug effects. *Blood* 2006; **107**: 752-759 [PMID: [16189265](#) DOI: [10.1182/blood-2005-07-3022](#)]
- 18 **Gotlib J**, Berubé C, Growney JD, Chen CC, George TI, Williams C, Kajiguchi T, Ruan J, Lilleberg SL, Durocher JA, Lichy JH, Wang Y, Cohen PS, Arber DA, Heinrich MC, Neckers L, Galli SJ, Gilliland DG, Coutré SE. Activity of the tyrosine kinase inhibitor PKC412 in a patient with mast cell leukemia with the D816V KIT mutation. *Blood* 2005; **106**: 2865-2870 [PMID: [15972446](#) DOI: [10.1182/blood-2005-04-1568](#)]
- 19 **Bose P**, Verstovsek S. Avapritinib for Systemic Mastocytosis. *Expert Rev Hematol* 2021; **14**: 687-696 [PMID: [34289787](#) DOI: [10.1080/17474086.2021.1959315](#)]
- 20 **Jensen RT**. Gastrointestinal abnormalities and involvement in systemic mastocytosis. *Hematol Oncol Clin North Am* 2000; **14**: 579-623 [DOI: [10.1016/S0889-8588\(05\)70298-7](#)]
- 21 **Lee JK**, Whittaker SJ, Enns RA, Zetler P. Gastrointestinal manifestations of systemic mastocytosis. *World J Gastroenterol* 2008; **14**: 7005-7008 [PMID: [19058339](#) DOI: [10.3748/wjg.14.7005](#)]
- 22 **Horan RF**, Austen KF. Systemic mastocytosis: retrospective review of a decade's clinical experience at the Brigham and Women's Hospital. *J Invest Dermatol* 1991; **96**: 5S-13S; discussion 13S [PMID: [16799602](#) DOI: [10.1111/1523-1747.ep12468899](#)]
- 23 **Doyle LA**, Sepehr GJ, Hamilton MJ, Akin C, Castells MC, Hornick JL. A clinicopathologic study of 24 cases of systemic mastocytosis involving the gastrointestinal tract and assessment of mucosal mast cell density in irritable bowel syndrome and asymptomatic patients. *Am J Surg Pathol* 2014; **38**: 832-843 [PMID: [24618605](#) DOI: [10.1097/PAS.0000000000000190](#)]
- 24 **Hamera L**, Santos AM, Prince SA, Chandrupatla S, Jordan J. Systemic Mastocytosis: A Rare Cause of Diarrhea. *Cureus* 2020; **12**: e9112 [PMID: [32670731](#) DOI: [10.7759/cureus.9112](#)]
- 25 **Cherner JA**, Jensen RT, Dubois A, O'Dorisio TM, Gardner JD, Metcalfe DD. Gastrointestinal Dysfunction in Systemic Mastocytosis. *Gastroenterology* 1988; **95**: 657-667 [DOI: [10.1016/S0016-5085\(88\)80012-X](#)]
- 26 **Bischoff SC**. Physiological and pathophysiological functions of intestinal mast cells. *Semin Immunopathol* 2009; **31**: 185-205 [PMID: [19533134](#) DOI: [10.1007/s00281-009-0165-4](#)]
- 27 **Ciriza de Los Ríos C**, Castel de Lucas I, Canga Rodríguez-Valcárcel F, Diéguez Pastor MDC, de Las Cuevas Moreno N, Rey Díaz-Rubio E. Irritable bowel syndrome and basal serum tryptase: the correlation between subtype, severity and comorbidities. a pilot study. *Rev Esp Enferm Dig* 2021 [DOI: [10.17235/reed.2021.7697/2020](#)]
- 28 **Sokol H**, Georgin-Lavialle S, Canioni D, Barete S, Damaj G, Soucie E, Bruneau J, Chandesris MO, Suarez F, Launay JM, Aouba A, Grandpeix-Guyodo C, Lanternier F, Grosbois B, de Gennes C, Cathébras P, Fain O, Hoyeau-Idrissi N, Dubreuil P, Lortholary O, Beaugerie L, Ranque B, Hermine O. Gastrointestinal manifestations in mastocytosis: a study of 83 patients. *J Allergy Clin Immunol* 2013; **132**: 866-73.e1 [PMID: [23890756](#) DOI: [10.1016/j.jaci.2013.05.026](#)]
- 29 **Kirsch R**, Geboes K, Shepherd NA, de Hertogh G, Di Nicola N, Lebel S, Mickys U, Riddell RH. Systemic mastocytosis involving the gastrointestinal tract: clinicopathologic and molecular study of five cases. *Mod Pathol* 2008; **21**: 1508-1516 [PMID: [18931652](#) DOI: [10.1038/modpathol.2008.158](#)]
- 30 **Poynard T**, Nataf C, Messing B, Modigliani R, Lecompte T, Nicolas P, Dray F, Ferme C. Secretory diarrhea and

- prostaglandin D2 overproduction in systemic mastocytosis. *N Engl J Med* 1982; **307**: 186 [DOI: [10.1056/NEJM198207153070315](https://doi.org/10.1056/NEJM198207153070315)]
- 31 **Cherner JA**. Gastric acid secretion in systemic mastocytosis. *N Engl J Med* 1989; **320**: 1562 [PMID: [2725591](https://pubmed.ncbi.nlm.nih.gov/2725591/)] DOI: [10.1056/NEJM198906083202320](https://doi.org/10.1056/NEJM198906083202320)]
- 32 **Arguedas MR**, Ferrante D. Systemic mastocytosis and giant gastroduodenal ulcer. *Gastrointest Endosc* 2001; **54**: 530-533 [PMID: [11577328](https://pubmed.ncbi.nlm.nih.gov/11577328/)] DOI: [10.1067/mge.2001.115320](https://doi.org/10.1067/mge.2001.115320)]
- 33 **McCarty TR**, Hung A, Mohanty A, Allen JI. Systemic Mastocytosis Complicated by Non-Cirrhotic Portal Hypertension and Variceal Bleeding. *ACG Case Rep J* 2017; **4**: e30 [PMID: [28286795](https://pubmed.ncbi.nlm.nih.gov/28286795/)] DOI: [10.14309/crj.2017.30](https://doi.org/10.14309/crj.2017.30)]
- 34 **Narayanan MN**, Liu Yin JA, Azzawi S, Warnes TW, Turck WP. Portal hypertension and ascites in systemic mastocytosis. *Postgrad Med J* 1989; **65**: 394-396 [PMID: [2608581](https://pubmed.ncbi.nlm.nih.gov/2608581/)] DOI: [10.1136/pgmj.65.764.394](https://doi.org/10.1136/pgmj.65.764.394)]
- 35 **Grundfest S**, Cooperman AM, Ferguson R, Benjamin S. Portal hypertension associated with systemic mastocytosis and splenomegaly. *Gastroenterology* 1980; **78**: 370-373 [DOI: [10.1016/0016-5085\(80\)90591-0](https://doi.org/10.1016/0016-5085(80)90591-0)]
- 36 **Scolapio JS**, Wolfe J 3rd, Malavet P, Woodward TA. Endoscopic findings in systemic mastocytosis. *Gastrointest Endosc* 1996; **44**: 608-610 [PMID: [8934172](https://pubmed.ncbi.nlm.nih.gov/8934172/)] DOI: [10.1016/s0016-5107\(96\)70019-6](https://doi.org/10.1016/s0016-5107(96)70019-6)]
- 37 **Mickys U**, Barakauskiene A, De Wolf-Peeters C, Geboes K, De Hertogh G. Aggressive systemic mastocytosis complicated by protein-losing enteropathy. *Dig Liver Dis* 2007; **39**: 693-697 [PMID: [16843741](https://pubmed.ncbi.nlm.nih.gov/16843741/)] DOI: [10.1016/j.dld.2006.06.003](https://doi.org/10.1016/j.dld.2006.06.003)]
- 38 **Bedeir A**, Jukic DM, Wang L, Mullady DK, Regueiro M, Krasinskas AM. Systemic mastocytosis mimicking inflammatory bowel disease: A case report and discussion of gastrointestinal pathology in systemic mastocytosis. *Am J Surg Pathol* 2006; **30**: 1478-1482 [PMID: [17063092](https://pubmed.ncbi.nlm.nih.gov/17063092/)] DOI: [10.1097/01.pas.0000213310.51553.d7](https://doi.org/10.1097/01.pas.0000213310.51553.d7)]
- 39 **Chrysakopoulos G**, Demonakou M, Papasavvas S, Koutsoumpas A, Mylonas G, Tzias V. Indolent systemic mastocytosis in a patient with ileocolitis. *Ann Gastroenterol* 2014; **27**: 270-272
- 40 **Okayama Y**, Kawakami T. Development, migration, and survival of mast cells. *Immunol Res* 2006; **34**: 97-115 [PMID: [16760571](https://pubmed.ncbi.nlm.nih.gov/16760571/)] DOI: [10.1385/IR:34:2:97](https://doi.org/10.1385/IR:34:2:97)]
- 41 **Shakoory B**, Fitzgerald SM, Lee SA, Chi DS, Krishnaswamy G. The role of human mast cell-derived cytokines in eosinophil biology. *J Interferon Cytokine Res* 2004; **24**: 271-281 [PMID: [15153310](https://pubmed.ncbi.nlm.nih.gov/15153310/)] DOI: [10.1089/107999004323065057](https://doi.org/10.1089/107999004323065057)]
- 42 **Irani AA**, Schechter NM, Craig SS, DeBlois G, Schwartz LB. Two types of human mast cells that have distinct neutral protease compositions. *Proc Natl Acad Sci USA* 1986; **83**: 4464-4468 [PMID: [3520574](https://pubmed.ncbi.nlm.nih.gov/3520574/)] DOI: [10.1073/pnas.83.12.4464](https://doi.org/10.1073/pnas.83.12.4464)]
- 43 **Irani AM**, Craig SS, DeBlois G, Elson CO, Schechter NM, Schwartz LB. Deficiency of the tryptase-positive, chymase-negative mast cell type in gastrointestinal mucosa of patients with defective T lymphocyte function. *J Immunol* 1987; **138**: 4381-4386
- 44 **Irani AM**, Goldstein SM, Wintroub BU, Bradford T, Schwartz LB. Human mast cell carboxypeptidase. Selective localization to MCTC cells. *J Immunol* 1991; **147**: 247-253
- 45 **Ammann RW**, Vetter D, Deyhle P, Tschen H, Sulser H, Schmid M. Gastrointestinal involvement in systemic mastocytosis. *Gut* 1976; **17**: 107-112 [PMID: [1261881](https://pubmed.ncbi.nlm.nih.gov/1261881/)] DOI: [10.1136/gut.17.2.107](https://doi.org/10.1136/gut.17.2.107)]
- 46 **Kleinschmidt S**, Harder J, Nolte I, Marsilio S, Hewicker-Trautwein M. Phenotypical characterization, distribution and quantification of different mast cell subtypes in transmural biopsies from the gastrointestinal tract of cats with inflammatory bowel disease. *Vet Immunol Immunopathol* 2010; **137**: 190-200 [PMID: [20646765](https://pubmed.ncbi.nlm.nih.gov/20646765/)] DOI: [10.1016/j.vetimm.2010.05.005](https://doi.org/10.1016/j.vetimm.2010.05.005)]
- 47 **Jakate S**, Demeo M, John R, Tobin M, Keshavarzian A. Mastocytic enterocolitis: increased mucosal mast cells in chronic intractable diarrhea. *Arch Pathol Lab Med* 2006; **130**: 362-367 [PMID: [16519565](https://pubmed.ncbi.nlm.nih.gov/16519565/)] DOI: [10.5858/2006-130-362-MEIMMC](https://doi.org/10.5858/2006-130-362-MEIMMC)]
- 48 **Akhavain M A**, Patel NR, Muniyappa PK, Glover SC. Allergic mastocytic gastroenteritis and colitis: an unexplained etiology in chronic abdominal pain and gastrointestinal dysmotility. *Gastroenterol Res Pract* 2012; **2012**: 950582 [PMID: [22577375](https://pubmed.ncbi.nlm.nih.gov/22577375/)] DOI: [10.1155/2012/950582](https://doi.org/10.1155/2012/950582)]
- 49 **Shukla SA**, Veerappan R, Whittimore JS, Ellen Miller L, Youngberg GA. Mast cell ultrastructure and staining in tissue. *Methods Mol Biol* 2006; **315**: 63-76 [PMID: [16110149](https://pubmed.ncbi.nlm.nih.gov/16110149/)] DOI: [10.1385/1-59259-967-2:063](https://doi.org/10.1385/1-59259-967-2:063)]
- 50 **Ramsay DB**, Stephen S, Borum M, Voltaggio L, Doman DB. Mast cells in gastrointestinal disease. *Gastroenterol Hepatol* 2010; **6**: 772-777
- 51 **Valent P**, Cerny-Reiterer S, Herrmann H, Mirkina I, George TI, Sotlar K, Sperr WR, Horny HP. Phenotypic heterogeneity, novel diagnostic markers, and target expression profiles in normal and neoplastic human mast cells. *Best Pract Res Clin Haematol* 2010; **23**: 369-378 [PMID: [21112036](https://pubmed.ncbi.nlm.nih.gov/21112036/)] DOI: [10.1016/j.beha.2010.07.003](https://doi.org/10.1016/j.beha.2010.07.003)]
- 52 **Castells M**, Butterfield J. Mast Cell Activation Syndrome and Mastocytosis: Initial Treatment Options and Long-Term Management. *J Allergy Clin Immunol Pract* 2019; **7**: 1097-1106 [PMID: [30961835](https://pubmed.ncbi.nlm.nih.gov/30961835/)] DOI: [10.1016/j.jaip.2019.02.002](https://doi.org/10.1016/j.jaip.2019.02.002)]
- 53 **Simons FE**, Simons KJ. Histamine and H1-antihistamines: celebrating a century of progress. *J Allergy Clin Immunol* 2011; **128**: 1139-1150.e4 [PMID: [22035879](https://pubmed.ncbi.nlm.nih.gov/22035879/)] DOI: [10.1016/j.jaci.2011.09.005](https://doi.org/10.1016/j.jaci.2011.09.005)]
- 54 **Spechler SJ**. Proton Pump Inhibitors: What the Internist Needs to Know. *Med Clin North Am* 2019; **103**: 1-14 [PMID: [30466666](https://pubmed.ncbi.nlm.nih.gov/30466666/)] DOI: [10.1016/j.mcna.2018.08.001](https://doi.org/10.1016/j.mcna.2018.08.001)]
- 55 **Leung KB**, Flint KC, Brostoff J, Hudspith BN, Johnson NM, Lau HY, Liu WL, Pearce FL. Effects of sodium cromoglycate and nedocromil sodium on histamine secretion from human lung mast cells. *Thorax* 1988; **43**: 756-761 [PMID: [2462755](https://pubmed.ncbi.nlm.nih.gov/2462755/)] DOI: [10.1136/thx.43.10.756](https://doi.org/10.1136/thx.43.10.756)]
- 56 **Marone G**, Spadaro G, Granata F, Triggiani M. Treatment of mastocytosis: pharmacologic basis and current concepts. *Leukemia Research* 2001; **25**: 583-594 [DOI: [10.1016/S0145-2126\(01\)00039-X](https://doi.org/10.1016/S0145-2126(01)00039-X)]
- 57 **Metcalfe DD**. Classification and diagnosis of mastocytosis: current status. *J Invest Dermatol* 1991; **96**: 2S-4S; discussion 4S, 60S [PMID: [16799601](https://pubmed.ncbi.nlm.nih.gov/16799601/)] DOI: [10.1111/1523-1747.ep12468882](https://doi.org/10.1111/1523-1747.ep12468882)]
- 58 **Lim KH**, Pardanani A, Butterfield JH, Li CY, Tefferi A. Cytoreductive therapy in 108 adults with systemic mastocytosis: Outcome analysis and response prediction during treatment with interferon-alpha, hydroxyurea, imatinib mesylate or 2-chlorodeoxyadenosine. *Am J Hematol* 2009; **84**: 790-794 [PMID: [19890907](https://pubmed.ncbi.nlm.nih.gov/19890907/)] DOI: [10.1002/ajh.21561](https://doi.org/10.1002/ajh.21561)]
- 59 **Ustun C**, Gotlib J, Popat U, Artz A, Litzow M, Reiter A, Nakamura R, Kluin-Nelemans HC, Verstovsek S, Gajewski J, Perales MA, George T, Shore T, Sperr W, Saber W, Kota V, Yavuz AS, Pullarkat V, Rogosheske J, Hogan W, Van Besien K, Hagglund H, Damaj G, Arock M, Horny HP, Metcalfe DD, Deeg HJ, Devine S, Weisdorf D, Akin C, Valent P.

Consensus Opinion on Allogeneic Hematopoietic Cell Transplantation in Advanced Systemic Mastocytosis. *Biol Blood Marrow Transplant* 2016; **22**: 1348-1356 [PMID: 27131865 DOI: 10.1016/j.bbmt.2016.04.018]



Published by **Baishideng Publishing Group Inc**
7041 Koll Center Parkway, Suite 160, Pleasanton, CA 94566, USA
Telephone: +1-925-3991568
E-mail: bpgoffice@wjgnet.com
Help Desk: <https://www.f6publishing.com/helpdesk>
<https://www.wjgnet.com>

