

Correction

# Correction: Weng et al. New International Association for the Study of Lung Cancer (IASLC) Pathology Committee Grading System for the Prognostic Outcome of Advanced Lung Adenocarcinoma. *Cancers* 2020, 12, 3426

Ching-Fu Weng<sup>1,2</sup>, Chi-Jung Huang<sup>3,4,5</sup>, Shih-Hung Huang<sup>6</sup>, Mei-Hsuan Wu<sup>7</sup>, Ailun Heather Tseng<sup>8</sup>, Yung-Chuan Sung<sup>9</sup>, Henry Hsin-Chung Lee<sup>5,10,11,\*</sup> and Thai-Yen Ling<sup>2,\*</sup>

- <sup>1</sup> Division of Pulmonary Medicine, Department of Internal Medicine, Hsinchu Cathay General Hospital, Hsinchu 300, Taiwan; cgh18497@cgh.org.tw
  - <sup>2</sup> Department and Graduate Institute of Pharmacology, National Taiwan University, Taipei 100, Taiwan
  - <sup>3</sup> Medical Research Center, Cathay General Hospital, Taipei 106, Taiwan; aaronhuang@cgh.org.tw
  - <sup>4</sup> Department of Biochemistry, National Defense Medical Center, Taipei 114, Taiwan
  - <sup>5</sup> School of Medicine, Fu Jen Catholic University, New Taipei 242, Taiwan
  - <sup>6</sup> Division of Pathology, Cathay General Hospital, Taipei 106, Taiwan; ja68@cgh.org.tw
  - <sup>7</sup> Teaching and Research Center, Hsinchu Cathay General Hospital, Hsinchu 300, Taiwan; markicoo@cgh.org.tw
  - <sup>8</sup> Department of Biomedical Sciences and Engineering, National Central University, Taoyuan 320, Taiwan; c8500@cgh.org.tw
  - <sup>9</sup> Division of Hematology/Oncology, Department of Internal Medicine, Cathay General Hospital, Taipei 106, Taiwan; cgh06496@cgh.org.tw
  - <sup>10</sup> Department of Surgery, Hsinchu Cathay General Hospital, Hsinchu 300, Taiwan
  - <sup>11</sup> Graduate Institute of Translational and Interdisciplinary Medicine, College of Health Sciences and Technology, National Central University, Taoyuan 320, Taiwan
- \* Correspondence: cgh05589@cgh.org.tw (H.H.-C.L.); tyling@ntu.edu.tw (T.-Y.L.); Tel.: +886-3-527-8999 (ext. 61346) (H.H.-C.L.); +886-2-2312-3456 (ext. 88322) (T.-Y.L.)



**Citation:** Weng, C.-F.; Huang, C.-J.; Huang, S.-H.; Wu, M.-H.; Tseng, A.H.; Sung, Y.-C.; Lee, H.H.-C.; Ling, T.-Y. Correction: Weng et al. New International Association for the Study of Lung Cancer (IASLC) Pathology Committee Grading System for the Prognostic Outcome of Advanced Lung Adenocarcinoma. *Cancers* 2020, 12, 3426. *Cancers* 2021, 13, 4024. <https://doi.org/10.3390/cancers13164024>

Received: 22 December 2020

Accepted: 23 June 2021

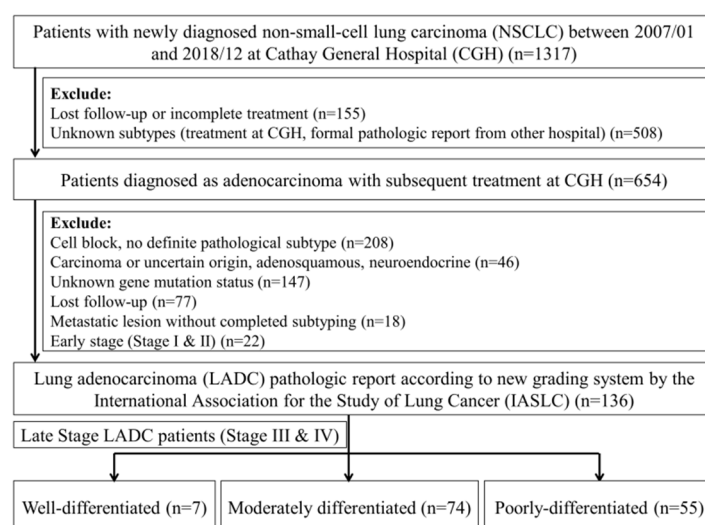
Published: 10 August 2021

**Publisher's Note:** MDPI stays neutral with regard to jurisdictional claims in published maps and institutional affiliations.

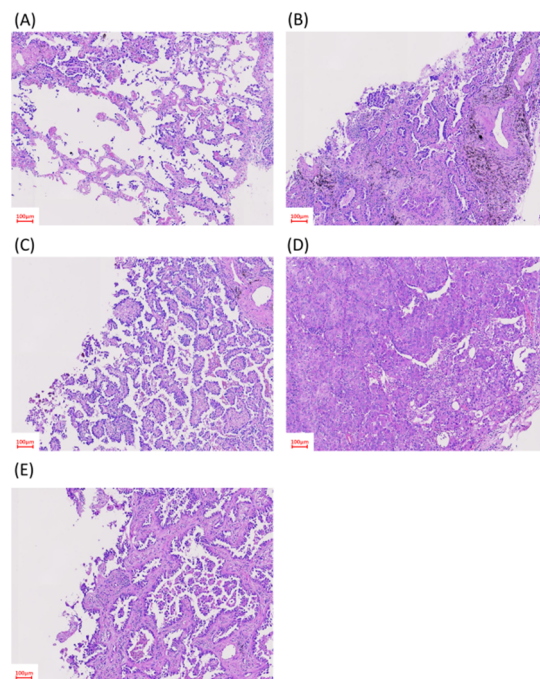


**Copyright:** © 2021 by the authors. Licensee MDPI, Basel, Switzerland. This article is an open access article distributed under the terms and conditions of the Creative Commons Attribution (CC BY) license (<https://creativecommons.org/licenses/by/4.0/>).

The authors would like to make a correction to their published paper [1]. There was a mistake in the original version of the article in Figures 1 and 2. We found that Figures 1 and 2 were misplaced in the article. They should be replaced with the following Figures 1 and 2:



**Figure 1.** Selection criteria for the subjects.



**Figure 2.** Histological patterns of lung adenocarcinoma. Representative hematoxylin and eosin-stained biopsy specimens: (A) lepidic-predominant pattern; (B) acinar-predominant pattern; (C) papillary-predominant pattern; (D) solid-predominant pattern; and (E) micropapillary-predominant pattern.

The authors apologize for any inconvenience caused and state that the scientific conclusions are unaffected. The original article has been updated.

**Funding:** This research received no external funding.

**Conflicts of Interest:** The authors declare no conflict of interest.

## Reference

1. Weng, C.-F.; Huang, C.-J.; Huang, S.-H.; Wu, M.-H.; Tseng, A.H.; Sung, Y.-C.; Lee, H.H.-C.; Ling, T.-Y. New International Association for the Study of Lung Cancer (IASLC) Pathology Committee Grading System for the Prognostic Outcome of Advanced Lung Adenocarcinoma. *Cancers* **2020**, *12*, 3426. [[CrossRef](#)] [[PubMed](#)]