

# Comparative analysis of the ribosomal DNA repeat unit (rDNA) of *Perna viridis* (Linnaeus, 1758) and *Perna canaliculus* (Gmelin, 1791)

Zhansheng Guo, Leng Han, Zhenlin Liang and Xuguang Hou

Shandong University at Weihai, Weihai, China

## ABSTRACT

*Perna viridis* and *P. canaliculus* are economically and ecologically important species of shellfish. In this study, the complete ribosomal DNA (rDNA) unit sequences of these species were determined for the first time. The gene order, 18S rRNA–internal transcribed spacer (ITS) 1–5.8S rRNA–ITS2–28S rRNA–intergenic spacer (IGS), was similar to that observed in other eukaryotes. The lengths of the *P. viridis* and *P. canaliculus* rDNA sequences ranged from 8,432 to 8,616 bp and from 7,597 to 7,610 bp, respectively, this variability was mainly attributable to the IGS region. The putative transcription termination site and initiation site were confirmed. *Perna viridis* and *P. canaliculus* rDNA contained two (length: 93 and 40 bp) and one (length: 131 bp) repeat motifs, respectively. Individual intra-species differences mainly involved the copy number of repeat units. In *P. viridis*, three cytosine-guanine (CpG) sites with sizes of 440, 1,075 and 537 bp were found to cover nearly the entire IGS sequence, whereas in *P. canaliculus*, two CpG islands with sizes of 361 and 484 bp were identified. The phylogenetic trees constructed with maximum likelihood and neighbour-joining methods and based on ITS sequences were identical and included three major clusters. Species of the same genus were easily clustered together.

Submitted 27 March 2019  
Accepted 8 August 2019  
Published 3 September 2019

Corresponding author  
Xuguang Hou,  
houxuguang@sdu.edu.cn

Academic editor  
José Pérez-Ortín

Additional Information and  
Declarations can be found on  
page 11

DOI 10.7717/peerj.7644

© Copyright  
2019 Guo et al.

Distributed under  
Creative Commons CC-BY 4.0

**OPEN ACCESS**

**Subjects** Aquaculture, Fisheries and Fish Science, Genomics, Marine Biology, Molecular Biology  
**Keywords** Ribosomal DNA, *Perna viridis*, *Perna canaliculus*, Intergenic spacer, Sub-repeat region

## INTRODUCTION

The family Mytilidae comprises a diverse group of bivalves that are broadly distributed in marine environments (Distel, 2000). This family includes mussels of the genus *Perna*, which encompasses three currently recognised species of intertidal mussels: *Perna viridis*, *P. canaliculus* and *P. perna*. All three species are considered economically, ecologically and environmentally important (Wood et al., 2007). The green mussel *P. viridis* is a warm water bivalve species distributed along the coasts and estuaries of the Asia-Pacific region. This mollusc species is highly prized both as a food source and an important aquaculture component in southeast Asia (Tan & Ransangan, 2017; Wang et al., 2018). The green-lipped mussel *P. canaliculus* is endemic to New Zealand, and its range extends from the warm temperate northern waters (35.5°S) to the cold temperate waters south of Stewart Island (47°S) (Wood et al., 2007). The aquaculture industry surrounding the

green-lipped mussel has expanded rapidly and now represents three quarters of all aquaculture exports (by value) from New Zealand (Ibarrola, Hilton & Ragg, 2017).

To date, molecular phylogenetic studies of *Perna* species have been based mainly on mitochondrial cytochrome oxidase I (COI, 623 bp in length) and ribosomal internal transcribed spacer (ITS) (ITS1 & 2, 711 bp) sequence data (Wood et al., 2007; Cunha et al., 2014; Gardner et al., 2016). Although COI and ITS (ITS1 and ITS2) sequences can be used as molecular markers to distinguish *Perna* species (Wood et al., 2007), these data do not supply sufficient information for *Perna* classification based on geographical identification or among strains (or even individuals). Within a given locus, short amplicon sequences may include less genetic variation than longer amplicons, which would reduce the ability to distinguish closely related species (Heeger et al., 2018). Therefore, this study aimed to identify a sufficiently informative molecular marker useful for inter-species and intra-species phylogenetic analyses of *Perna* species.

In eukaryotes, nuclear ribosomal DNA (rDNA) is usually organised in long tandem repeats. These repeats are arranged head-to-tail in large rDNA clusters to form nucleolar organising regions in chromosomes (Dyomin et al., 2016). Each repeated transcribed unit of rDNA comprises a coding region (18S, 5.8S and 28S rRNA genes) separated by two internal transcribed spacers (ITS1 and ITS2). Moreover, each transcribed unit is separated by an intergenic spacer (IGS) which can be subdivided into external transcribed spacers (ETSs) and the non-transcribed spacer (NTS). The coding regions are highly conserved between organisms, and have been selected as genetic markers for higher-level relationships within the molluscan (Distel, 2000; Passamaneck, Schander & Halanych, 2004; Combosch & Giribet, 2016). Whereas non-transcribed regions (ITS1, ITS2 and IGS) exhibit high structural variability (Li et al., 2016; Huang et al., 2017; Guo et al., 2018). The IGS region often contains repeat fragments, promoter and enhancer sites. Both the IGS and its embedded promoters can evolve more rapidly than other parts of the ribosomal repeat unit, which can lead to considerable differences in the sequences between related species and considerable intra-individual variations in length (Huang et al., 2017). The IGS region was shown to be more variable and phylogenetically informative than the ITS (Zhao et al., 2011). The availability of a complete rDNA sequence would provide researchers with various options, depending on the molecular variability. For *Perna* species, however, the NCBI database only contains partial rDNA sequences (18S and ITS) and a complete rDNA unit has never been reported.

In the present study, the complete sequences of rDNA in *P. viridis* and *P. canaliculus* are reported for the first time, and the molecular features of various rDNA components are characterised, especially IGS. The phylogenetic relationships among members of the family Mytilidae are revealed based on ITS sequences. Comparative analyses are performed with several known complete rDNA sequences to clarify the rDNA relationships among these molluscs and other eukaryotes.

## MATERIALS AND METHODS

### Mussel material and DNA extraction

*Perna viridis* samples were collected offshore of Leizhou Bay (20.968614°N, 110.325743°E) in China, and *P. canaliculus* samples were collected from Pegasus Bay (43.312595°S,

**Table 1** Primers used in the present paper.

Amplified region	Primers	Sequences (5'-3')	Length (bp)
18S	18S-ar	CTTTCAAATGTCTGCCCTAT	1,505
	18S-br	TTCACCTACGGAAACCTTGT	
18S-ITS-28S	ITS-ar1	AGGGACAAGTGGCGTTTAGC	1,573
	ITS-ar2	TCGTAACAAGGTTTCCGTAG	1,162
	ITS-br	TTACCTCTAAGCGGTTTAC	
28S1	28S1-ar	TTAGAGGTAAACGGGTGGAT	1,093
	28S1-br	AGTTGATTCGGCAGGTGAG	
28S2	28S2-ar	GACGAAACGACCTCAACCTA	1,957
	28S2-br	AATGATAGGATGAGCCGACA	
28S-IGS-18S	IGS-ar1	GGGATAACTGGCTTGTGGCA	2,486
	IGS-br1	TGGATGTGGTAGCCGTTTCT	
	IGS-ar2	GGATAACTGGCTTGTGGCA	3,497
	IGS-br2	CTGCCTTCCTGGATGTGG	

172.854629°E) in New Zealand. Three individuals from each species were used in this study. Total genomic DNA was extracted from muscle tissue using the TIANamp Marine Animals DNA Kit (TianGen Biotech Co., Ltd, Beijing, China) according to the manufacturer's instructions.

### PCR amplification, cloning and sequencing

The rDNA fragments were amplified using the primers listed in [Table 1](#). The primers used to amplify the 18S and 28S rRNA genes were designed based on partial sequences corresponding to the 18S rRNA genes of *P. viridis* ([EF613234](#)) and 28S rRNA genes of *Geukensia demissa* ([AY145405](#)), respectively. The primers used to amplify the 18S-ITS-28S region were designed from the 3' end of *P. viridis* ([EF613234](#)) and 5' end of *G. demissa* ([AY145405](#)), while the IGS region were designed based on the 3' end of *G. demissa* ([AY145405](#)) and 5' end of *P. viridis* ([EF613234](#)). Each PCR had a total volume of 25  $\mu$ L and contained the following: one  $\mu$ L of DNA template, 0.5  $\mu$ L of each primer (10  $\mu$ mol/L), 12.5  $\mu$ L of 2  $\times$  TransTaq PCR SuperMix and 10.5  $\mu$ L of H<sub>2</sub>O. The reactions were initially denatured at 95 °C for 3 min and subjected to 35 cycles of denaturing at 95 °C for 45 s; annealing at 52 °C for 18S and 28S rRNA, 50 °C for 18S-ITS-28S and 56.5 °C for 28S-IGS-18S for 30 s, and extension at 72 °C for 1-3.5 min (1 kb/min). Finally, all reactions were subjected to a final extension at 72 °C for 7 min. The PCR products were electrophoresed on 0.8% agarose gels, extracted and purified. The purified PCR products were cloned using the pUCm-T Vector Cloning Kit and SanPrep Column Plasmid MiniPreps Kit (Sangon Biotech Co., Ltd., Shanghai, China) according to the manufacturer's instructions. Three positive recombinant plasmid colonies corresponding to each amplified region were picked, cultivated and sequenced by Beijing Ruiboxingke Biotechnology Co., Ltd. (Beijing, China).

### Sequence analysis

The complete rDNA unit was assembled using DNAMAN software ([Kaukonen et al., 2000](#)), and both sequences have been deposited in the GenBank database (accession

numbers: MK419104–MK419109). The boundaries of each region were confirmed using the NCBI database and BLAST software (Johnson *et al.*, 2008). Multiple sequence alignment was performed using T-Coffee software (Notredame, Higgins & Heringa, 2000) with manual adjustments. The general molecular features of *P. viridis* and *P. canaliculus* rDNA were calculated using MEGA 7.0 (Kumar, Stecher & Tamura, 2016). Sub-repeat (SR) fragments and inverted repeats of the IGS region were analysed with the Tandem Repeats Finder (Benson, 1999) and Unipro UGENE (Okonechnikov, Golosova & Fursov, 2012), respectively. Predictions of putative transcription initiation sites (TIS) and transcription termination sites (TTSs) in the IGS regions were based on a comparative analysis of the sequences with data for various marine animal species from the literature (Ki, Kim & Lee, 2009; Luchetti, Scanabissi & Mantovani, 2006; Chae *et al.*, 2018; Guo *et al.*, 2018). Cytosine-guanine (CpG) islands were identified using CpGPlot (Polanco & De La Vega, 1994). The sequence identity was confirmed using DNAMAN software. The genetic distance between *P. viridis* and *P. canaliculus* was calculated with MEGA 7.0 software according to a Kimura two-parameter model. Nucleotide diversity ( $\pi$ ) was calculated using the software DnaSP 5.10 (Librado & Rozas, 2009).

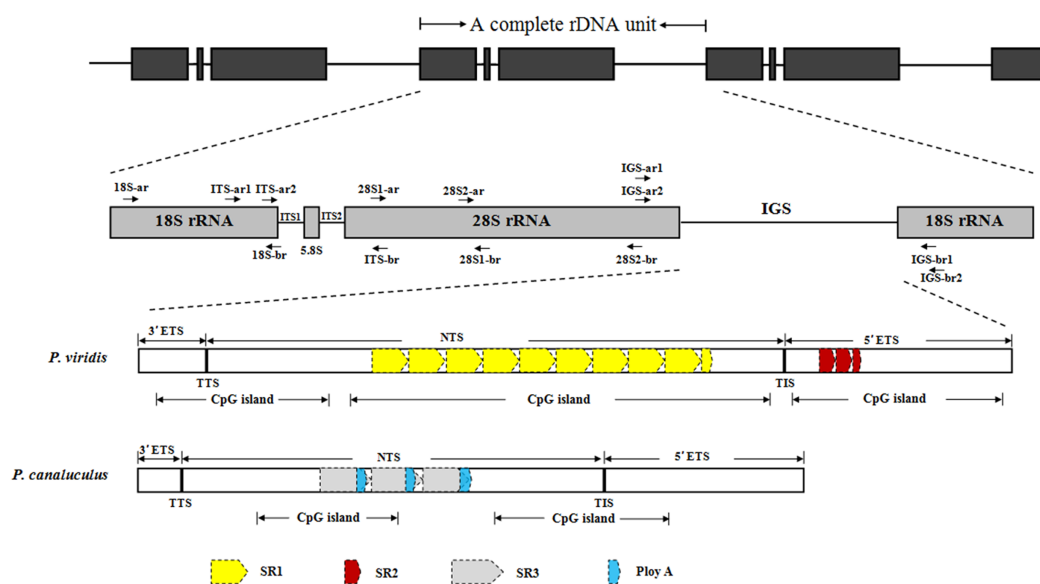
For phylogenetic reconstruction, the ITS sequences of *P. viridis* and *P. canaliculus* were first determined. Next, nine complete or near-complete sequences from the following Mytilidae species were obtained from the GenBank database: *Mytilus edulis* (AY695798), *M. unguiculatus* (former *M. coruscus*) (MK157201), *M. galloprovincialis* (JX081670), *M. trossulus* (JX081669), *Aulacomya maoriana* (former *Aulacomya atra maoriana*) (DQ924557), *P. perna* southern Indian population (former *P. indica*) (JQ622200), *P. perna* Omani population (KC692037), *P. perna* Mauritanian population (former *P. picta*) (DQ924548) and *Modiolus rectus* (EF035114). Maximum likelihood (ML) and neighbour-joining (NJ) phylogenetic trees based on ITS sequences were constructed with 1,000 bootstrap replicates using MEGA 7.0 software and the GTR+G nucleotide substitution and Kimura two-parameter models, respectively. *Crassostrea ariakensis* (EU252081) was selected as the outgroup.

## RESULTS

### Complete rDNA sequences of *P. viridis* and *P. canaliculus*

The complete rDNA units of *P. viridis* and *P. canaliculus* were determined after sequencing, comparison and assembly. Figure 1 presents a scheme of the structural organisation of the rDNA repeat unit, which includes the following elements in order: 18S–ITS1–5.8S–ITS2–28S–IGS. The complete rDNA units of *P. viridis* and *P. canaliculus* varied from 8,432 to 8,616 bp and from 7,597 to 7,609 bp, respectively.

The length, GC content, pairwise identity and variable sites of each region are shown in Table 2. An analysis of the *P. viridis* and *P. canaliculus* sequences revealed low levels of genetic variation in the 18S, 5.8S and 28S rRNA regions, which had pairwise identities of 99.56%, 100% and 98.94%, respectively. The variable (V) sites in 18S and 28S rRNA made respective contributions of only 0.83% and 1.22%, indicating that the coding regions (18S, 5.8S and 28S rRNA) were even more highly conserved than the complete rDNA unit (6.25%). Differences between *P. viridis* and *P. canaliculus* were observed mainly in



**Figure 1** Structural organisation scheme of nuclear ribosomal DNA (nrDNA) repeat units in *P. viridis* and *P. canaliculus*. ITS, internal transcribed spacer; IGS, intergenic spacer; ETS, external transcribed spacer; NTS, non-transcribed spacer; TTS, transcription termination site; TIS, transcription initiation site; SR, sub-repeat; CpG island, cytosine-guanine island. The arrows represent primer positions.

Full-size [DOI: 10.7717/peerj.7644/fig-1](https://doi.org/10.7717/peerj.7644/fig-1)

**Table 2** Characterization of nuclear ribosomal DNA (rDNA) from *Perna viridis* and *P. canaliculus*.

Region	<i>P. viridis</i>		<i>P. canaliculus</i>		Alignment length (bp)	Pairwise identity (%)	Pairwise distance	Variable sites (V)
	Length (bp)	GC content (%)	Length (bp)	GC content (%)				
rDNA	8,432–8,616	53.75–53.90	7,597–7,610	53.02–53.08	8,714	77.71	0.066–0.067	546 (6.26%)
18S rRNA	1,799	50.03	1,800	50.06–50.11	1,800	99.56	0.003–0.007	15 (0.83%)
ITS1	269	52.04–53.53	304	57.89	314	66.99	0.183–0.188	45 (14.33%)
5.8S rRNA	157	56.05	157	56.05	157	100	0.000	0
ITS2	263	51.71–52.09	258	49.22	277	67.03	0.246–0.252	52 (18.77%)
28S rRNA	3,678	54.59–54.65	3,679	54.61–54.63	3,679	98.94	0.009–0.010	45 (1.22%)
IGS	2,267–2,451	55.52–55.81	1,399–1,411	52.18–52.95	2,486	33.32	0.304–0.313	389 (15.65%)

**Note:**

bp, base pair; ITS, internal transcribed spacer; IGS, intergenic spacer; the pairwise distance and identity represent the mean value between *P. viridis* (F1–F3) and *P. canaliculus* (N1–N3), respectively.

non-coding regions (ITS1, ITS2 and IGS). In intra-species comparisons of three individuals per species, the sequence similarities of ITS1 and ITS2 in *P. viridis* were 99.38% and 99.87%, respectively, and these regions differed by only five and one base, respectively. Among *P. canaliculus* individuals, both regions had sequence similarities of 100%. The respective sizes of ITS1 and ITS2 were 269 and 263 bp in *P. viridis* and 304 and 258 bp in *P. canaliculus*. Differences in the lengths and variable sites of the ITS1 and ITS2 regions resulted in relatively low sequence identities (66.99% in ITS1, 67.03% in ITS2).

Comparisons of the IGS sequences at various levels revealed that the highest (91.84% for *P. viridis*, 98.31% for *P. canaliculus*) and lowest similarities (33.32%) were found at the individual and inter-species levels, respectively, and the variable sites between the IGS

**Table 3** Pairwise identities (upper right matrix) and pairwise distances (lower left matrix) of IGS.

Sample	F1	F2	F3	N1	N2	N3
F1		91.48%	98.50%	33.32%	33.70%	35.75%
F2	0.013		92.21%	33.36%	32.97%	33.63%
F3	0.014	0.004		35.90%	35.39%	36.24%
N1	0.327	0.323	0.320		97.60%	98.58%
N2	0.314	0.310	0.307	0.009		98.30%
N3	0.318	0.314	0.311	0.007	0.007	

**Note:**

F1–F3 and N1–N3 represent the three individuals of *P. viridis* and *P. canaliculus*, respectively.

sequences of the two species accounted for 15.65% of all sites in this region (Tables 2 and 3). The sizes of the IGS sequences ranged from 1,399 to 1,411 bp and 2,267 to 2,451 bp in *P. canaliculus* and *P. viridis*, respectively. This result suggested that the IGS sequences of them had large differences in length and a relatively high level of sequence heterogeneity. Due to heterogeneity in the length of IGSs at the individual and inter-species levels of the genus *Perna*, the longest IGS sequence of each species was chosen as a representative to outline the canonical structural organisation of the IGSs from *P. canaliculus* and *P. viridis*. The detailed analysis of the molecular structure of IGS sequences of them contains six distinct regions: TTS, TIS, NTS, ETS, SR and CpG islands.

### Beginning and ending sequences of transcripts, ETS and NTS

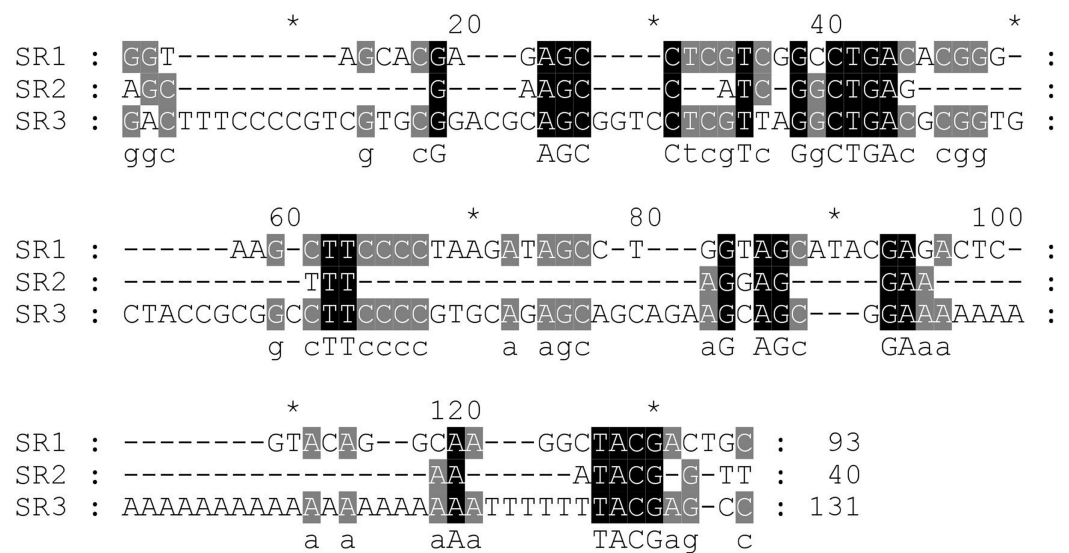
A poly (T) tract (5'-TTTTTCGTTTGCCTTTTTCGTTTCCTTTTTTTTT-3') was identified in the *P. viridis* IGS region from 171 to 202 bp. The sequence 5'-TTACTTGT-3' was detected in the *P. canaliculus* IGS region from 120 to 127 bp. Both sequences were considered putative TTSs. Accordingly, the positions of the 3'ETS sequences in the *P. viridis* and *P. canaliculus* 5'IGS regions were determined to correspond to bp 1–202 and bp 1–127, respectively. The sequence 'TTATTATGTGGAGTGGG' was considered a putative TIS for RNA polymerase I, and the +1 position of the TIS was the C/T nucleotide in *P. viridis* and *P. canaliculus*. The 5'ETSs were localised between the putative TIS and the beginning of the 18S rRNA gene and had lengths of 581 bp and 500–503 bp in *P. viridis* and *P. canaliculus*, respectively. Non-transcribed spacers comprised the remainder of IGS. The length, nucleotide diversity, intra- and inter-species sequence identity of 3'ETS, NTS and 5'ETS in *P. viridis* and *P. canaliculus* were shown in Table 4, comparison with 3'ETS and 5'ETS, NTS had lower intra- and inter-species sequence identity and higher nucleotide diversity. The high level of individual, intra- and inter-species divergence within the NTS sequences was attributed to lower functional constraints. In contrast, the nucleotide sequences were more conserved in the ETS region than in the NTSs, despite differences in the length of the former between *P. viridis* and *P. canaliculus*.

### Sub-repeat regions and CpG islands in the IGS sequence

Next, the DNA repeats in the IGS sequences were analysed to explore the IGS genetic structure in greater detail. The identification of the numbers and lengths of the repetitive

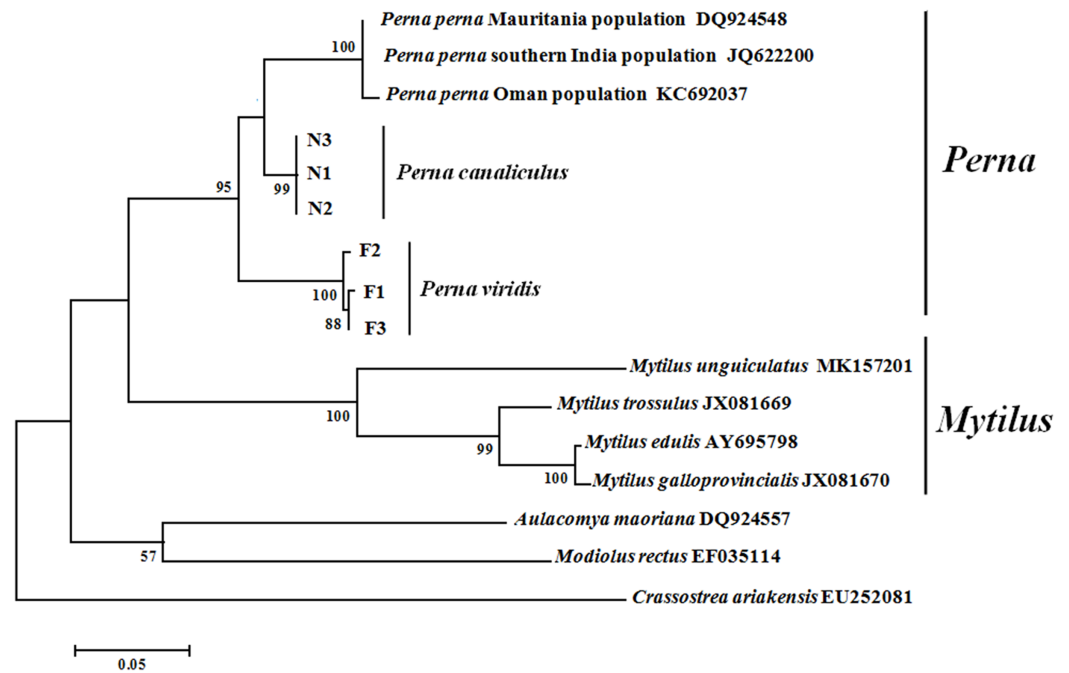
**Table 4** The length, nucleotide diversity ( $\pi$ ), intra- and inter-species sequence identity of 3' ETS, NTS and 5' ETS in *P. viridis* and *P. canaliculus*.

Sample	Length (bp)			Nucleotide diversity ( $\pi$ )			Intra-species identity (%)			Inter-species identity (%)		
	3' ETS	NTS	5' ETS	3' ETS	NTS	5' ETS	3' ETS	NTS	5' ETS	3' ETS	NTS	5' ETS
F1	202	1484	581	0.0067	0.0144	0.0000	98.51	88.19	100	71.20	54.20	84.23
F2	199	1671	581									
F3	200	1485	581									
N1	127	784	500	0.0000	0.0113	0.0013	100	97.42	99.34			
N2	127	769	503									
N3	127	774	500									

**Figure 2** Alignment of the sub-repeat region of *P. viridis* and *P. canaliculus*. SR1 (Length: 93 bp) and SR2 (Length: 40 bp) belong to *P. viridis*, and SR3 (Length: 131 bp) belong to *P. canaliculus*. Two nucleotide bases are identical and marked in grey. Three nucleotide bases are identical and marked in black. [Full-size !\[\]\(86257f54800c9844bc7e863bea396fba\_img.jpg\) DOI: 10.7717/peerj.7644/fig-2](https://doi.org/10.7717/peerj.7644/fig-2)

sequence motifs occurring in *P. viridis* and *P. canaliculus* enabled the definition of three different SRs with lengths of 40–131 bp (Figs. 1 and 2). A comparison of the IGS regions indicated an extremely high level of sequence diversity within the SR region. The *P. canaliculus* sequence included only one type of SR (length: 131 bp) which was repeated 2.9 times, and three poly (A) tracts in the NTS area. The *P. viridis* sequence included two repeat motifs: SR1 (length: 93 bp), which was repeated 9.3–11.5 times within the NTS, and SR2 (length: 40 bp), which was repeated 2.5 times within the 5'ETS. Differences between individuals of the same species were due to SR copy number variation. No inverted repeats were detected in either *Perna* species.

The GC content of the IGS region was slightly higher in *P. viridis* than in *P. canaliculus* (Table 2). Similarly, the number and lengths of the CpG islands were greater in *P. viridis* than in *P. canaliculus*. In *P. viridis*, three CpG sites were found to cover nearly the



**Figure 3** Phylogenetic trees constructed using maximum likelihood (ML) and neighbour-joining (NJ) methods based on ITS sequences of Mytilidae species. Numbers around the branches indicate bootstrap support from 1,000 tests. ML and NJ trees are topologically identical. F1–F3 and N1–N3 represent the three individuals of *P. viridis* and *P. canaliculus*, respectively.

Full-size [DOI: 10.7717/peerj.7644/fig-3](https://doi.org/10.7717/peerj.7644/fig-3)

entire IGS sequence (lengths: 440, 1,078 and 537 bp). By contrast, the *P. canaliculus* IGS region included two CpG islands located at the NTS and 5'ETS (lengths: 361 and 484 bp).

### Phylogenetic tree analysis based on ITS sequences

Maximum likelihood and NJ phylogenetic trees were constructed based on the ITS sequences of Mytilidae species (Fig. 3). Clustering pattern analysis revealed that the NJ and ML trees were identical, both including three major clusters, and species of the same genus clearly clustered together with relatively high supporting values. For both *P. viridis* and *P. canaliculus*, the individuals were classified into single clusters with high sequence identity. All Mytilidae species included in the phylogenetic analysis belong to the subfamily Mytilinae, except *M. rectus* which belongs to the subfamily Modiolinae. During tree formation, *M. rectus* and *A. maoriana* initially clustered together, and then clustered with *Perna* and *Mytilus* species.

## DISCUSSION

In this study, the complete rDNA units of *P. viridis* and *P. canaliculus* were sequenced for the first time. The rDNA gene orders in these organisms were identical to those in other eukaryotes. Reported rDNA unit lengths vary among taxa, as shown in Table 5, with values of 43 kb (human) (Gonzalez & Sylvester, 1995) and 45 kb (mouse) for mammals (Grozdanov, Georgiev & Karagyozov, 2003); 13.67 kb for fish (*Cyprinus carpio*) (Vera et al., 2003); 12.26 kb (*Brachiola algerae*) (Belkorchia et al., 2008), 9.5 kb (*Plasmodiophora*



**Table 5** The rDNA unit length (nrDNA), 18S rDNA, ITS1, 5.8S rDNA, ITS2, 28S rDNA and IGS lengths (bp), and GenBank Accession numbers of eukaryotes used for comparison purposes in this publication.

Species	nrDNA	18S rDNA	ITS1	5.8S rDNA	ITS2	28S rDNA	IGS	GenBank accession No.	Reference
<i>Homo sapiens</i>	42,999	1,871	1,095	157	1,155	5,035	33,686	U13369	Gonzalez & Sylvestre (1995)
<i>Mus musculus</i>	45,306	1,870	1,000	157	1,088	4,730	36,462	BK000964	Grozdanov, Georgiev & Karagyozov (2003)
<i>Gallus gallus</i>	11,863	1,823	2,530	157	733	4,441	2,179	KT445934	Dyomin et al. (2016)
<i>Cyprinus carpio</i>	13,676	1,861	367	158	390	4,093	6,807	AF133089 and AY260899	Vera et al. (2003)
<i>Entamoeba invadens</i>	22,481	1,962	116	116	78	3,188	16,700	AY190083	Ojha et al. (2013)
<i>Brachiola algerae</i>	12,269	1,391		22		2,557	7,915	AM422905	Belkorchia et al. (2008)
<i>Paramphistomum cervi</i>	8,493–10,221	1,994	1,293	157	286	4,186	577–2,305	KJ459934–KJ459938	Zheng et al. (2014)
<i>Eurytrema pancreaticum</i>	8,306–8,310	1,996	1,103	160	231	3,669	1,147–1,151	KY490000–KY490004	Su et al. (2018)
<i>Plasmodiophora brassicae</i>	9,513	3,105	143	154	165	3,611	2,332	/	Niwa et al. (2011)
<i>Aurelia sp.1</i>	7,731	1,814	272	158	278	3,606	1,603	EU276014	Ki, Kim & Lee (2009)
<i>Chrysaora pacifica</i>	8,167	1,810	246	158	182	3,609	2,162	KY212123	Chae et al. (2018)
<i>Paracyclopsina nana</i>	7,974	1,808	299	157	216	3,572	1,922	FJ214952	Ki, Park & Lee (2011)
<i>Haliotis discus hannai</i>	10,668–10,698	1,871	329	160	301	3,411	4,624–4,654	KY485141–KY485146, KY569413–KY569414	Guo et al. (2017)
<i>Haliotis iris</i>	9,579–9,706	1,858	321	160	296	3,412	3,560–3,662	KY933301–KY933305, KY978225–KY978226	Guo, Hou & Han (2018)
<i>Haliotis rubra</i>	9,881	1,858	327	160	297	3,413	3,854	MF099780, MF111108, MF106175, MF106174, MF099782, MF113042	Guo et al. (2018)
<i>Oryza sativa</i>	7,928–8,934	/	/	/	/	/	/	OSJNOa063K24 and OSJNBb0013K10	Fujisawa et al. (2006)
<i>Stipa</i> spp.	7,791–8,897	1,811	221	164	205–207	2,193–3,098	3,397	KY826229–KY826235	Krawczyk et al. (2017)
<i>Bangia</i>	10,976–11,497	1,839	217–699	158	398–437	3,751	4,613	KP279672–KP279682, KP311305–KP311315	Xu et al. (2016)
<i>Pyropia yezoensis</i>	13,650–13,654	1,834	371–372	159	532–535	4,770	5,984	KJ578745–KJ578748, KJ608639–KJ608640	Li et al. (2016)
<i>Marchantia polymorpha</i>	16,103	1,820	1,067	158	381	3,468	9,209	AB021684	Sone et al. (1999)
<i>P. viridis</i>	8,432–8,616	1,799	269	157	263	3,678	2,267–2,451	MK419104–MK419106	Present study
<i>P. canaliculus</i>	7,597–7,610	1,800	304	157	258	3,679	1,399–1,411	MK419107–MK419109	Present study

*brassicae*) (Niwa et al., 2011) and 8.3 kb (*Eurytrema pancreaticum*) (Su et al., 2018) for parasites; 7.9 kb (*Paracyclopsina nana*) (Ki, Park & Lee, 2011), 7.7 kb (*Aurelia* sp.1) (Ki, Kim & Lee, 2009) and 9.6–10.7 kb (*Haliotis* species) (Guo et al., 2017, 2018; Guo, Hou & Han, 2018) for marine invertebrates; 7.9–8.9 kb (*Oryza sativa*) (Fujisawa et al., 2006) and 8.0–8.9 kb (*Stipa* spp.) (Krawczyk et al., 2017) for land plants and 11.76–12.57 kb (*Bangia*) (Xu et al., 2016) and 13.65 kb (*Pyropia yezoensis*) (Li et al., 2016) for sea algae. Meanwhile, the rDNA lengths of *P. viridis* and *P. canaliculus* were 8.6 and 7.6 kb, respectively.

Table 5 compares each region of the rDNA unit between the two *Perna* species and other eukaryotes. The length of the coding region (18S, 5.8S and 28S rRNA genes) exhibits conservative features. The length of 18S rRNA varies from 1,799 bp to 1,996 bp except for *Plasmodiophora brassicae* (3,105 bp) and *Brachiola algerae* (1,391 bp). The sizes of 5.8S rRNA in most eukaryotes are around 160 bp except for *Entamoeba invadens* (116 bp) and *Brachiola algerae*. In *B. algerae*, the ITS size was estimated at 22 bp and the 5.8S rRNA gene was not detected (Belkorchia et al., 2008), while the length of 28S rRNA ranged from 3 to 5 kb. Differences in rDNA lengths among species are mainly attributable to the IGS. According to the database of rDNA unit sequences submitted to GenBank, IGS lengths vary from 0.58 kb in *Paramphistomum cervi* to over 30 kb in mammals.

This study observed variations in the length and sequences of the IGS region in comparisons at both intra- and inter-species levels. Length differences in this region were largely responsible for variations in the entire rDNA unit lengths of *P. viridis* and *P. canaliculus* at both levels and are mainly attributable to differences in indels between individuals. Compared with the entire IGS region and the NTS, the beginning of the 3'ETS and latter half of the 5'ETS sequences were more highly conserved and exhibited greater sequence identity (>65%). All rDNA IGS sequences shared characteristics such as the presence of SR elements. Therefore, heterogeneity in the IGS length can be attributed to duplications or deletions of the SR region, which may be present in different copy numbers in almost all species (Ambrose & Crease, 2011; Huang et al., 2017). In an intra-species comparison of individuals, length variants were mainly attributable to the SR zone; for example, 9.3–11.5 copies of the repeat motif SR1 were present in *P. viridis* individuals. Huang et al. (2017) speculated that indels are restricted to SR-rich regions. Therefore, length polymorphisms in IGS result from concerted evolution, and unequal crossover between SR elements might be a major driving force underlying the evolution of rDNA units (Ganley & Scott, 1999; Stage & Eickbush, 2007). The repeat fragments were found to be species-specific and rarely adhered to any predictable behaviour or similarities even within a genus. For example, *P. viridis* and *P. canaliculus* exhibited totally different repeat patterns, and this phenomenon has also been observed in other eukaryotes (Krawczyk et al., 2017; Guo et al., 2018). Possibly, the repeat pattern could be used as a genetic marker for species identification.

The IGS contains several functional elements, including TTS and TIS regions. According to Ki, Kim & Lee (2009; Ki, Park & Lee, 2011), Guo et al. (2018; Guo, Hou & Han, 2018) and Chae et al. (2018), a poly(T) tract on the 5' side of the IGS can be considered a putative TTS in marine invertebrates. The typical structure of the region

near the beginning of the 5'IGS was also observed in *P. viridis* and *P. canaliculus*, even though the sequences were not totally identical. The core promoter contains TATA and GGGG boxes, which appear to be a general feature of rDNA transcription, and this site is immediately preceded by an AT-rich region, which is commonly found in both plants and animals (Vera *et al.*, 2003; Wang, Zhao & Li, 2003; Maggini *et al.*, 2008; Krawczyk *et al.*, 2017). However, the beginnings of the *P. viridis* and *P. canaliculus* IGS genes contained only two and one TATA-box sequences, respectively, and lacked AT-rich regions. Only one previous report described a similar putative TIS sequence (TTATTATGTGGAGTG GG). Specifically, Krawczyk *et al.* (2017), after an analysis of Poaceae species, also reported that an AT-rich region upstream of the TIS was not ubiquitous. The rDNA genes are widely used to resolve phylogenetic relationships between species at various taxonomic levels. However, few studies have used IGS to identify species or reveal phylogenetic relationships among mussels. A comparison of the genetic distances of rDNA between *P. viridis* and *P. canaliculus* yielded the largest value in the IGS region (0.304–0.313), which suggests that this region could be used to identify species even at a sub-genus level. Given its relatively rapid evolution (compared with other rDNA sequences) and differences in the SR sequences (e.g., copy number, sequence and length) among species, the IGS region may be more suitable than ITS and 18/28S rRNA for reconstructing both inter- and intra-species phylogenetic relationships.

In conclusion, we sequenced the complete rDNA unit of *P. viridis* and *P. canaliculus* for the first time. In both species, the structural organisation of the rDNA unit was similar to those of many other eukaryotes. The unit lengths in *P. viridis* and *P. canaliculus* were 8,432–8,616 bp and 7,597–7,610 bp, respectively, and variations in the length were mainly attributable to the IGS region. We further investigated the characteristics of the IGS and assessed sequence diversity at intra- and inter-species levels. The *Perna* rDNA unit provides a structural model of nuclear rDNA for molecular comparisons, particularly among Mytilidae species. These research discoveries will hopefully pave the way for analyses of mollusc population genetics and evolution.

## ADDITIONAL INFORMATION AND DECLARATIONS

### Funding

This work was supported by the Shandong Provincial Natural Science Foundation, China (Grant Number ZR2017PEE008). The funders had no role in study design, data collection and analysis, decision to publish, or preparation of the manuscript.

### Grant Disclosures

The following grant information was disclosed by the authors:  
Shandong Provincial Natural Science Foundation, China: ZR2017PEE008.

### Competing Interests

The authors declare that they have no competing interests.

## Author Contributions

- Zhansheng Guo conceived and designed the experiments, performed the experiments, analysed the data, prepared figures and/or tables, authored or reviewed drafts of the paper, approved the final draft.
- Leng Han performed the experiments, approved the final draft.
- Zhenlin Liang analysed the data, approved the final draft, polishing the language.
- Xuguang Hou contributed reagents/materials/analysis tools, prepared figures and/or tables, authored or reviewed drafts of the paper, approved the final draft.

## Data Availability

The following information was supplied regarding data availability:

The data are available at GenBank: [MK419104–MK419109](#).

## Supplemental Information

Supplemental information for this article can be found online at <http://dx.doi.org/10.7717/peerj.7644#supplemental-information>.

## REFERENCES

- Ambrose CD, Crease TJ. 2011.** Evolution of the nuclear ribosomal DNA intergenic spacer in four species of the *Daphnia pulex* complex. *BMC Genetics* **12**(1):13 DOI [10.1186/1471-2156-12-13](#).
- Belkorchia A, Biderre C, Militon C, Polonais V, Wincker P, Jubin C, Delbac F, Peyretailade E, Peyret P. 2008.** In vitro propagation of the microsporidian pathogen *Brachiola algerae* and studies of its chromosome and ribosomal DNA organization in the context of the complete genome sequencing project. *Parasitology International* **57**(1):62–71 DOI [10.1016/j.parint.2007.09.002](#).
- Benson G. 1999.** Tandem repeats finder: a program to analyze DNA sequences. *Nucleic Acids Research* **27**(2):573–580 DOI [10.1093/nar/27.2.573](#).
- Chae J, Seo Y, Yu WB, Yoon WD, Lee HE, Chang SJ, Ki JS. 2018.** Comprehensive analysis of the jellyfish *Chrysaora pacifica* (Goette, 1886) (Semaestomeae: Pelagiidae) with description of the complete rDNA sequence. *Zoological Studies* **57**:51 DOI [10.6620/ZS.2018.57-51](#).
- Combosch DJ, Giribet G. 2016.** Clarifying phylogenetic relationships and the evolutionary history of the bivalve order Arcida (Mollusca: Bivalvia: Pteriomorpha). *Molecular Phylogenetics and Evolution* **94**:298–312 DOI [10.1016/j.ympev.2015.09.016](#).
- Cunha RL, Nicastro KR, Costa J, McQuaid CD, Serrao EA, Zardi GI. 2014.** Wider sampling reveals a non-sister relationship for geographically contiguous lineages of a marine mussel. *Ecology and Evolution* **4**(11):2070–2081 DOI [10.1002/ece3.1033](#).
- Distel DL. 2000.** Phylogenetic relationships among Mytilidae (Bivalvia): 18S rRNA data suggest convergence in mytilid body plans. *Molecular Phylogenetics and Evolution* **15**(1):25–33 DOI [10.1006/mpev.1999.0733](#).
- Dyomin AG, Koshel EI, Kiselev AM, Saifitdinova AF, Galkina SA, Fukagawa T, Kostareva AA, Gaginskaya ER. 2016.** Chicken rRNA gene cluster structure. *PLOS ONE* **11**(6):e0157464 DOI [10.1371/journal.pone.0157464](#).
- Fujisawa M, Yamagata H, Kamiya K, Nakamura M, Saji S, Kanamori H, Wu J, Matsumoto T, Sasaki T. 2006.** Sequence comparison of distal and proximal ribosomal DNA arrays in rice

- (*Oryza sativa* L.) chromosome 9S and analysis of their flanking regions. *Theoretical and Applied Genetics* **113**(3):419–428 DOI [10.1007/s00122-006-0307-1](https://doi.org/10.1007/s00122-006-0307-1).
- Ganley AR, Scott B. 1999.** Extraordinary ribosomal spacer length heterogeneity in a *Neotyphodium* endophyte hybrid: implications for concerted evolution. *Genetics* **150**(4):1625–1637.
- Gardner JPA, Patterson J, George S, Edward JKP. 2016.** Combined evidence indicates that *Perna indica* Kuriakose and Nair 1976 is *Perna perna* (Linnaeus, 1758) from the Oman region introduced into southern India more than 100 years ago. *Biological Invasions* **18**(5):1375–1390 DOI [10.1007/s10530-016-1074-9](https://doi.org/10.1007/s10530-016-1074-9).
- Gonzalez IL, Sylvester JE. 1995.** Complete sequence of the 43 kb human ribosomal DNA repeat: analysis of the intergenic spacer. *Genomics* **27**(2):320–328 DOI [10.1006/geno.1995.1049](https://doi.org/10.1006/geno.1995.1049).
- Grozdanov P, Georgiev O, Karagoyozov L. 2003.** Complete sequence of the 45-kb mouse ribosomal DNA repeat: analysis of the intergenic spacer☆. *Genomics* **82**(6):637–643 DOI [10.1016/S0888-7543\(03\)00199-X](https://doi.org/10.1016/S0888-7543(03)00199-X).
- Guo Z, Ding Y, Zhang X, Hou X. 2017.** Complete nuclear ribosomal DNA sequence analysis of Pacific abalone *Haliotis discus hannai*. *Fisheries Science* **83**(5):777–784 DOI [10.1007/s12562-017-1109-x](https://doi.org/10.1007/s12562-017-1109-x).
- Guo Z, Han L, Ding Y, Hou X, Liang Z. 2018.** Molecular characterisation of the complete nuclear ribosomal DNA sequence of the blacklip abalone *Haliotis rubra*. *New Zealand Journal of Marine and Freshwater Research* **52**(3):430–443 DOI [10.1080/00288330.2018.1430594](https://doi.org/10.1080/00288330.2018.1430594).
- Guo Z, Hou X, Han L. 2018.** Complete nuclear ribosomal DNA sequence analyses of the black-footed abalone *Haliotis iris*. *New Zealand Journal of Marine and Freshwater Research* **52**(2):232–246 DOI [10.1080/00288330.2017.1363790](https://doi.org/10.1080/00288330.2017.1363790).
- Heeger F, Bourne EC, Baschien C, Yurkov A, Bunk B, Spröer C, Overmann J, Mazzoni CJ, Monaghan MT. 2018.** Long-read DNA metabarcoding of ribosomal RNA in the analysis of fungi from aquatic environments. *Molecular Ecology Resources* **18**(6):1500–1514 DOI [10.1111/1755-0998.12937](https://doi.org/10.1111/1755-0998.12937).
- Huang Y, Yu F, Li X, Luo L, Wu J, Yang Y, Deng Z, Chen R, Zhang M. 2017.** Comparative genetic analysis of the 45S rDNA intergenic spacers from three *Saccharum* species. *PLOS ONE* **12**(8):e0183447 DOI [10.1371/journal.pone.0183447](https://doi.org/10.1371/journal.pone.0183447).
- Ibarrola I, Hilton Z, Ragg NLC. 2017.** Physiological basis of inter-population, inter-familial and intra-familial differences in growth rate in the green-lipped mussel *Perna canaliculus*. *Aquaculture* **479**:544–555 DOI [10.1016/j.aquaculture.2017.06.031](https://doi.org/10.1016/j.aquaculture.2017.06.031).
- Johnson M, Zaretskaya I, Raytselis Y, Merezuk Y, McGinnis S, Madden TL. 2008.** NCBI BLAST: a better web interface. *Nucleic Acids Research* **36**(Web Server):W5–W9 DOI [10.1093/nar/gkn201](https://doi.org/10.1093/nar/gkn201).
- Kaukonen J, Juselius JK, Tiranti V, Kyttala A, Zeviani M, Comi GP, Keranen S, Peltonen L, Suomalainen A. 2000.** Role of adenine nucleotide translocator 1 in mtDNA maintenance. *Science* **289**(5480):782–785 DOI [10.1126/science.289.5480.782](https://doi.org/10.1126/science.289.5480.782).
- Ki J-S, Kim I-C, Lee J-S. 2009.** Comparative analysis of nuclear ribosomal DNA from the moon jelly *Aurelia* sp.1 (Cnidaria: Scyphozoa) with characterizations of the 18S, 28S genes, and the intergenic spacer (IGS). *Hydrobiologia* **616**(1):229–239 DOI [10.1007/s10750-008-9596-5](https://doi.org/10.1007/s10750-008-9596-5).
- Ki JS, Park HG, Lee JS. 2011.** Extensive analysis of nuclear cistron rDNA sequence of *Paracyclopina nana* (Cyclopoida: Cyclopettidae). *Hydrobiologia* **666**:3–9 DOI [10.1007/s10750-010-0563-6](https://doi.org/10.1007/s10750-010-0563-6).

- Krawczyk K, Nobis M, Nowak A, Szczecińska M, Sawicki J. 2017. Phylogenetic implications of nuclear rRNA IGS variation in *Stipa* L. (Poaceae). *Scientific Reports* 7(1):11506 DOI 10.1038/s41598-017-11804-x.
- Kumar S, Stecher G, Tamura K. 2016. MEGA7: Molecular Evolutionary Genetics Analysis version 7.0 for bigger datasets. *Molecular Biology and Evolution* 33(7):1870–1874 DOI 10.1093/molbev/msw054.
- Li X, Xu J, He Y, Shen S, Zhu J, Shen Z. 2016. The complete nuclear ribosomal DNA (nrDNA) cistron sequence of *Pyropia yezoensis* (Bangiales, Rhodophyta). *Journal of Applied Phycology* 28(1):663–669 DOI 10.1007/s10811-015-0522-8.
- Librado P, Rozas J. 2009. DnaSP v5: a software for comprehensive analysis of DNA polymorphism data. *Bioinformatics* 25(11):1451–1452 DOI 10.1093/bioinformatics/btp187.
- Luchetti A, Scanabissi F, Mantovani B. 2006. Molecular characterization of ribosomal intergenic spacer in the tadpole shrimp *Triops cancriformis* (Crustacea, Branchiopoda, Notostraca). *Genome* 49(8):888–893 DOI 10.1139/g06-047.
- Maggini F, Gelati MT, Spolverini M, Frediani M. 2008. The intergenic spacer region of the rDNA in *Olea europaea* L. *Tree Genetics & Genomes* 4(2):293–298 DOI 10.1007/s11295-007-0109-x.
- Niwa R, Kawahara A, Murakami H, Tanaka S, Ezawa T. 2011. Complete structure of nuclear rDNA of the obligate plant parasite *Plasmodiophora brassicae*: intraspecific polymorphisms in the exon and group I intron of the large subunit rDNA. *Protist* 162(3):423–434 DOI 10.1016/j.protis.2011.02.005.
- Notredame C, Higgins DG, Heringa J. 2000. T-Coffee: a novel method for multiple sequence alignments. *Journal of Molecular Biology* 302(1):205–217 DOI 10.1006/jmbi.2000.4042.
- Ojha S, Singh N, Bhattacharya A, Bhattacharya S. 2013. The ribosomal RNA transcription unit of *Entamoeba invadens*: accumulation of unprocessed pre-rRNA and a long non coding RNA during encystation. *Molecular and Biochemical Parasitology* 192(1–2):30–38 DOI 10.1016/j.molbiopara.2013.10.002.
- Okonechnikov K, Golosova O, Fursov M. 2012. Unipro UGENE: a unified bioinformatics toolkit. *Bioinformatics* 28(8):1166–1167 DOI 10.1093/bioinformatics/bts091.
- Passamaneck YJ, Schander C, Halanych KM. 2004. Investigation of molluscan phylogeny using large-subunit and small-subunit nuclear rRNA sequences. *Molecular Phylogenetics and Evolution* 32(1):25–38 DOI 10.1016/j.ympev.2003.12.016.
- Polanco C, De La Vega MP. 1994. The structure of the rDNA intergenic spacer of *Avena sativa* L.: a comparative study. *Plant Molecular Biology* 25(4):751–756 DOI 10.1007/BF00029613.
- Sone T, Fujisawa M, Takenaka M, Nakagawa S, Yamaoka S, Sakaida M, Nishiyama R, Yamato KT, Ohmido N, Fukui K, Fukuzawa H, Ohyama K. 1999. Bryophyte 5S rDNA was inserted into 45S rDNA repeat units after the divergence from higher land plants. *Plant Molecular Biology* 41(5):679–685 DOI 10.1023/A:1006398419556.
- Stage DE, Eickbush TH. 2007. Sequence variation within the rRNA gene loci of 12 *Drosophila* species. *Genome Research* 17(12):1888–1897 DOI 10.1101/gr.6376807.
- Su X, Zhang Y, Zheng X, Wang XX, Li Y, Li Q, Wang CR. 2018. Characterization of the complete nuclear ribosomal DNA sequences of *Eurytrema pancreaticum*. *Journal of Helminthology* 92(4):484–490 DOI 10.1017/S0022149X17000554.
- Tan KS, Ransangan J. 2017. Feeding behaviour of green mussels, *Perna viridis* farmed in Marudu Bay, Malaysia. *Aquaculture Research* 48(3):1216–1231 DOI 10.1111/are.12963.
- Vera MI, Molina A, Pinto R, Reyes M, Alvarez M, Krauskopf E, Quezada C, Torres J, Krauskopf M. 2003. Genomic organization of the rDNA cistron of the teleost fish *Cyprinus carpio*. *Biological Research* 36:241–251 DOI 10.1016/j.toxlet.2006.06.327.

- Wang Y, Zeng Z, Zhang X, Shi Q, Wang C, Hu Z, Li H. 2018.** Identification and characterization of a novel defensin from Asian green mussel *Perna viridis*. *Fish & Shellfish Immunology* 74:242–249 DOI [10.1016/j.fsi.2017.12.029](https://doi.org/10.1016/j.fsi.2017.12.029).
- Wang S, Zhao M, Li T. 2003.** Complete sequence of the 10.3 kb silkworm *Attacus ricini* rDNA repeat, determination of the transcriptional initiation site and functional analysis of the intergenic spacer. *DNA Sequence* 14(2):95–101 DOI [10.1080/1042517031000072089](https://doi.org/10.1080/1042517031000072089).
- Wood AR, Apte S, MacAvoy ES, Gardner JPA. 2007.** A molecular phylogeny of the marine mussel genus *Perna* (Bivalvia: Mytilidae) based on nuclear (ITS1&2) and mitochondrial (COI) DNA sequences. *Molecular Phylogenetics and Evolution* 44(2):685–698 DOI [10.1016/j.ympev.2006.12.019](https://doi.org/10.1016/j.ympev.2006.12.019).
- Xu J, Jiang B, Chai S, He Y, Zhu J, Shen Z, Shen S. 2016.** Complete nuclear ribosomal DNA sequence amplification and molecular analyses of *Bangia* (Bangiales, Rhodophyta) from China. *Chinese Journal of Oceanology and Limnology* 34(5):1044–1053 DOI [10.1007/s00343-016-5033-1](https://doi.org/10.1007/s00343-016-5033-1).
- Zhao G-H, Blair D, Li X-Y, Li J, Lin R-Q, Zou F-C, Sugiyama H, Mo X-H, Yuan Z-G, Song H-Q, Zhu X-Q. 2011.** The ribosomal intergenic spacer (IGS) region in *Schistosoma japonicum*: structure and comparisons with related species. *Infection, Genetics and Evolution* 11(3):610–617 DOI [10.1016/j.meegid.2011.01.015](https://doi.org/10.1016/j.meegid.2011.01.015).
- Zheng X, Chang QC, Zhang Y, Tian SQ, Lou Y, Duan H, Guo DH, Wang CR, Zhu XQ. 2014.** Characterization of the complete nuclear ribosomal DNA sequences of *Paramphistomum cervi*. *Science World Journal* 2014:751907 DOI [10.1155/2014/751907](https://doi.org/10.1155/2014/751907).