

## Research Article

# Significance of EGFR and PTEN Expression and PLR and NLR for Predicting the Prognosis of Epithelioid Malignant Peritoneal Mesothelioma

Yufei Liang,<sup>1</sup> Guoqi Zheng ,<sup>1</sup> Wenjie Yin,<sup>1</sup> Hui Song,<sup>1</sup> Chunying Li,<sup>1</sup> Liang Tian,<sup>2</sup> and Dongliang Yang<sup>3</sup>

<sup>1</sup>Department of Gastroenterology, Cangzhou Central Hospital, Cangzhou, Hebei 061001, China

<sup>2</sup>Department of Pathology, Cangzhou Central Hospital, Cangzhou, Hebei 061001, China

<sup>3</sup>Cangzhou Medical College, Cangzhou, Hebei 061001, China

Correspondence should be addressed to Guoqi Zheng; [czzyyxhk@126.com](mailto:czzyyxhk@126.com)

Received 29 July 2018; Accepted 2 January 2019; Published 4 February 2019

Academic Editor: Nicola Silvestris

Copyright © 2019 Yufei Liang et al. This is an open access article distributed under the Creative Commons Attribution License, which permits unrestricted use, distribution, and reproduction in any medium, provided the original work is properly cited.

**Objective.** The aim of our study was to investigate the expression of EGFR and PTEN in tissues and measure the serum platelet-to-lymphocyte ratio (PLR) and neutrophil-to-lymphocyte ratio (NLR) to evaluate the prognostic factors of patients with epithelioid malignant peritoneal mesothelioma (MPeM). **Methods.** 33 patients of pathologically diagnosed epithelioid MPeM tissues were analyzed using immunohistochemistry to detect EGFR and PTEN; the PLR and NLR were determined by using a routine blood test. We analyzed the relationships of these markers to age, sex, asbestos exposure, elevated platelet count, ascites, and clinical stage. **Results.** EGFR and PTEN expressions were positive in 22 (66.67%) and 7 (21.21%) epithelioid MPeM patients, respectively. However, these two markers as well as PLR and NLR were not significantly associated with age, sex, asbestos exposure, elevated platelet counts, ascites, and clinical stage ( $P > 0.05$ ). The correlation between EGFR and PTEN was negative ( $r = -0.577$ ,  $P < 0.001$ ), but the correlation between NLR and PLR was positive ( $r = 0.456$ ,  $P = 0.008$ ). The median survival of all patients was 6 months. In univariate analysis, PTEN ( $P < 0.001$ ), PLR ( $P = 0.014$ ), and NLR ( $P = 0.015$ ) affected the overall survival. Multivariate analysis revealed that PTEN and PLR were validated as predictive for overall survival of epithelioid MPeM (HR = 0.070,  $P = 0.001$ , and HR = 3.379,  $P = 0.007$ , respectively). **Conclusion.** On the basis of these results, it is suggested that PTEN and PLR are risk factors for the prognosis of epithelioid MPeM, which may be targets for selective therapies and improve the outcomes of patients with epithelioid MPeM.

## 1. Introduction

Malignant peritoneal mesothelioma (MPeM) is a rare neoplasm arising from the serosal lining of the peritoneal cavity and is related to asbestos exposure in most cases [1]. Like pleural mesothelioma, it is quite aggressive, with most patients succumbing to this disease within 7-14 months after diagnosis [2]. The histology of MPeM is divided into epithelial type, sarcoma type, and mixed type, among which epithelial type accounts for the majority [1]. Although diagnostic techniques and treatment of MPeM have improved,

prognosis is poor. Therefore, it is critically important to identify factors to predict prognosis to develop treatments.

Researchers agree that the tumor microinflammatory state of the body and the body's immune system can significantly affect prognosis [3], and variations in systemic inflammatory response biomarker levels have been associated with adverse clinical outcome in various malignancies. Inflammation leading to oxidative stress and cell damage contributes to causing genetic alterations that trigger malignant transformation, and the ensuing inflammatory response continues to fuel tumor progression. The platelet-to-lymphocyte ratio

(PLR) and neutrophil-to-lymphocyte ratio (NLR) serve as markers of inflammation and prognosis of patients with solid tumors that can be detected early [4–6], but in several reports, NLR exhibited no predicted power on overall survival in malignant mesothelioma [7, 8].

Tumor invasion and metastasis are complex, multistep processes driven by oncogenes and tumor suppressor genes, abnormal signal transduction pathways, and abnormal cell cycle regulation, which mediate tumorigenesis and disease progression. The phosphatidylinositol 3-kinase (PI3K)/mammalian target of rapamycin (mTOR) pathway has been the focus of interest in identifying potential prognostic markers of cancer [9]. Activation of the PI3K/mTOR pathway regulates cell growth, protein biosynthesis, and proliferation, which promote tumorigenesis [9].

EGFR is the titular member of a family of receptor tyrosine kinases (RTKs), which transduces signals to intracellular signaling systems [10]. PTEN encodes a tumor suppressor with phosphatase activity [11]. EGFR and PTEN regulate the induction and progression of malignant tumors through the PI3K/mTOR signal transduction pathway [12, 13]. Abnormal EGFR and PTEN signaling pathways may produce malignant tumors.

PTEN is expressed by malignant pleural mesothelioma (MPeM) cells [14], and PLR and NLR are associated with prognosis in cancer patients [15]. In contrast, clinical studies of EGFR expression in MPeM are few and are based on relatively small numbers of tissue patients [16]. However, there has been no previous validation confirming the relationship of all four indicators (including PTEN, EGFR, PLR, and NLR) and survival in epithelioid MPeM. Therefore, our aim was to validate the prognostic role of four indicators for overall survival (OS) in epithelioid MPeM.

## 2. Materials and Methods

Consecutive patients with a diagnosis of epithelioid MPeM made between 1 January 2013 and 31 December 2015 who were diagnosed at or attended in Cangzhou Central Hospital were included in this retrospective study. This study was approved by the human ethics committees of Cangzhou Central Hospital (approval ref. no. 2012-012-01) to acquire paraffin-embedded peritoneal tissues from 33 patients using B-mode ultrasound-guided biopsy or surgery. Patients did not receive antitumor treatment. The pathological diagnosis was confirmed by two experienced pathologists according to the 2012 update of the United States “Mesothelioma Pathology Diagnosis Guide” [17]; the results and quality control standards for each assay were independently reviewed. MPeM is clinically divided into 4 phases as follows: (I) tumor confinement to the peritoneum; (II) tumor invasion to the peritoneal surface of the organ, the abdominal diaphragm, and/or the abdominal lymph nodes; (III) tumor metastasis to the lymph nodes outside the abdominal cavity; and (IV) blood transfer to distant organs [18].

All specimens were fixed using 10% neutral formalin, embedded in paraffin, and subjected to immunohistochemical analysis using the ABC method. The standard

streptavidin biotin peroxidase detection technique was used as described [19]. A 4  $\mu\text{m}$  tissue section of each specimen was deparaffinized and rehydrated. The citrate buffer microwave was used for antigen retrieval, and 3% hydrogen peroxide blocked the endogenous enzyme to reduce background staining. After adding the primary antibody at 4 degrees overnight, and washing with PBS, a biotinylated secondary antibody was added to slides, horseradish peroxidase was used as a marker, and diaminobenzidine was used as a chromogen. The negative control was a slide prepared in parallel without the primary antibody.

**2.1. Blood Samples.** Platelet, neutrophil, and lymphocyte numbers were determined using routine blood tests. The PLR was calculated as the ratio of the count of platelet to lymphocyte. The median PLR value was used because the data was not normally distributed. The median PLR value was 278, which was used as cutoff to classify MPeM as  $\geq 278$  group versus  $< 278$  group. The NLR was derived by dividing the absolute neutrophil count by the absolute lymphocyte count, and a cutoff of  $< 5$  vs  $\geq 5$  was used in accordance with the first report of NLR in MPeM [20].

**2.2. Reagent.** A rabbit anti-human EGFR monoclonal antibody (clone number: 31G7) and a rabbit anti-human PTEN polyclonal antibody (clone number: 28H6) were purchased from Beijing ZS Biological Technology Co., Ltd. The DAB Reagent (ZLI-9032) was purchased from the Beijing ZS Company.

**2.3. Interpretation of Immunohistochemical Results.** EGFR is based on a membranous staining pattern (brown-yellow or brown granules), and PTEN is detected in the cytoplasm (brown granules). Absence of specific staining of tumor cells was considered negative. Two pathologists, who were not informed of the origins of the tumor tissue samples, evaluated the staining patterns. Immunohistochemical staining results were judged according to a standard protocol that employed optical microscopic observations ( $\times 400$  magnification) of five to eight randomly selected horizons. The sections were semiquantitatively assessed for the PTEN and EGFR expression by an observer. The intensity of staining and the percentage of positive cells were scored semiquantitatively 0 (negative;  $< 5\%$  of immunoreactive cells), 1 (weak; 5–25% of immunoreactive cells), 2 (moderate; 26–50% of immunoreactive cells), and 3 (strong;  $> 50\%$  of immunoreactive cells) [21]. The score  $\geq 1$  was regarded as positive; otherwise, the judgment was negative.

**2.4. Follow-Up.** Patients' survival was defined according to the date of pathological diagnosis of epithelioid MPeM. Patients were followed monthly until 31 December 2016 by telephone calls or an outpatient referral form. None of the patients was lost to the study.

**2.5. Statistical Analysis.** The statistical analyses were performed using SPSS 19.0. Chi-square test and Fisher exact test were used to test the association variables for categorical data. Correlations between parameters were tested by calculation of the Spearman rank correlation coefficient. For each

variable, we use the Kaplan–Meier method with two-tailed log-rank  $P$  values to evaluate potential prognostic factors. Then, we incorporate meaningful factors from univariate analysis into Cox’s proportional hazards regression model and forward LR method as multivariate analysis to estimate the independent prognostic predictor(s).  $P < 0.05$  was considered statistically significant; however, in the univariate analysis, we set  $P < 0.02$  to be statistically significant for inclusion in multivariate analysis.

### 3. Results

**3.1. Patients’ Demographic Data.** A total of 33 patients met the inclusion criteria and were included in the analyses. The patients (9 men and 24 women) ranged in age from 42 to 75 years (average 61.15 years). Among them, 29 had a history of asbestos exposure history, 24 had elevated platelet counts, and 27 had ascites. According to the clinical stage system, 21 patients (63.64%) were in stages I + II, and 12 patients (36.36%) were in stages III + IV. 14 (42.42%) patients received systemic or local chemotherapy (platinum-based or pemetrexed-based or combined), whereas the remaining patients received the best supportive care or were not treated. The median PLR and NLR were 278 and 5.97, respectively (Table 1).

**3.2. Expression and Correlation of EGFR, PTEN, PLR, and NLR with the Clinicopathological Features of Patients with Epithelioid MPeM.** EGFR is mainly stained in the cell membrane, while PTEN is mainly stained in the cytoplasm. Carcinomas expressed EGFR in 22 (66.67%) of 33 specimens and PTEN in 7 (21.21%) specimens (Figure 1). The data for the four indicators were not significantly associated with age, sex, asbestos exposure, elevated platelet count, ascites, and clinical stage ( $P > 0.05$ ). Spearman’s rho analysis revealed that the expression of EGFR was negatively correlated with that of PTEN ( $r = -0.577$ ,  $P < 0.001$ ) (Table 2), and NLR was positively correlated with PLR ( $r = 0.456$ ,  $P = 0.008$ ) (Table 3); however, PLR and NLR were not significantly associated with EGFR or PTEN expression ( $P > 0.05$ ).

**3.3. Survival Analysis.** Data were available for all of 33 epithelioid MPeM patients; the follow-up rate was 100%. By the end of the observation period, 30 patients had died and 3 patients remained alive. The 1- and 2-year overall survival rates were 19.6% and 4.4%, respectively. The median survival of the deceased patients after diagnosis was 6 months. The patients surviving at the end of the study had been followed for a median duration of 14 months.

Results for the univariate analyses of prespecified individual baseline variables are listed in Table 4. And we set  $P < 0.02$  to be statistically significant. PTEN, PLR, and NLR were univariable prognostic predictors (Table 4, Figure 2). Neither asbestos contact nor EGFR, clinical stage, or high platelet count was a significant prognostic predictor in univariable analyses.

The three statistically significant variables in univariate analyses were entered into the multivariate Cox model. Multivariable analysis demonstrated that PTEN expression

TABLE 1: Distribution of descriptive characteristics.

Characteristics	
Age (years)	
Min-max	42-75
Mean $\pm$ SD	61.15 $\pm$ 8.54
Sex, $n$ (%)	
Male	9 (27.27)
Female	24 (72.73)
Asbestos, $n$ (%)	
Yes	29 (87.88)
No	4 (12.12)
Platelet, $n$ (%)	
High	24 (72.73)
Normal	9 (27.27)
Ascites, $n$ (%)	
Yes	27 (81.82)
No	6 (18.18)
Stage, $n$ (%)	
I + II	21 (63.64)
III + IV	12 (36.36)
Chemotherapy, $n$ (%)	
Yes	14 (42.42)
No	19 (57.58)
PLR	
Min-max	57-1142
Median	278
NLR	
Min-max	1.42-19.00
Median	5.97

(HR = 0.070,  $P = 0.001$ ) and PLR (HR = 3.379,  $P = 0.007$ ), but not NLR, were significant independent prognostic predictors (Table 5).

### 4. Discussion

The cause of MPeM is unknown, although evidence implicates asbestos exposure (80%) [22]. We previously found that the incidence of asbestos exposure of patients with MPeM in Eastern China is 93.2% [23]. In the present study, the incidence of asbestos exposure was 87.88%, which is consistent with our previous study. We attribute these findings to the chronic inflammatory reaction to asbestos that eventually leads to cancer.

There has been considerable interest in the association of systemic inflammatory markers and prognosis in both early and advanced carcinoma. Increasing evidence shows that systemic inflammation and immunity play important roles in the occurrence, development, and metastasis of tumors [24]. Persistent inflammation establishes a microenvironment that favors the progression of cancer, and the malignant tumor promotes the inflammatory response. Persistent inflammatory stimulation leads to elevated or reduced

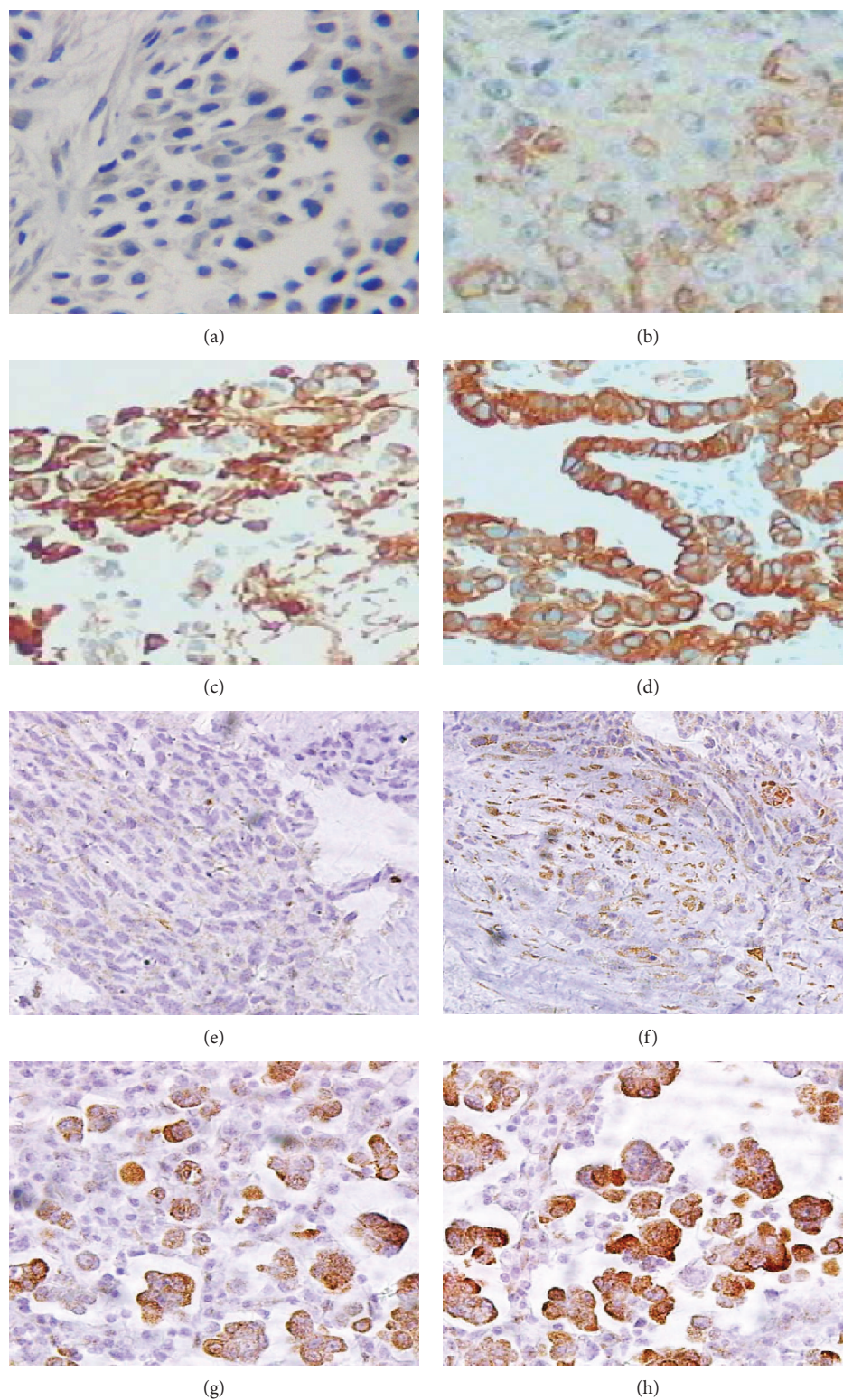


FIGURE 1: Expression of EGFR and PTEN in epithelioid MPeM tissue. EGFR was based on a membranous staining pattern, and PTEN was detected in the cytoplasm (a and e). Negative for EGFR and PTEN expression. (b and f) Weak expression of EGFR and PTEN in epithelioid MPeM tissue; minority of peritoneal cells are stained yellow. (c and g) Moderate expression of EGFR and PTEN in epithelioid MPeM tissue; a medium quantity of peritoneal cells are stained yellow or brown. (d and h) Strong expression of EGFR and PTEN in epithelioid MPeM tissue; majority of peritoneal cells are stained yellow or brown ( $\times 400$ ).

TABLE 2: Correlation between EGFR and PTEN expression (cases).

EGFR	PTEN		<i>r</i>	<i>P</i>
	+	—		
+	1	21	-0.577	0.000
—	6	5		

TABLE 3: Correlation between serum PLR and NLR (cases).

PLR	NLR		<i>r</i>	<i>P</i>
	<5	≥5		
<278	12	5	0.456	0.008
≥278	4	12		

numbers of platelets or lymphocytes, respectively, and 20%–60% of patients with cancer suffer from thrombocytosis [25]. Further, we reported that 80.4% of patients with peritoneal mesothelioma patients had elevated numbers of platelets [26].

In the present study, 72.7% of patients had elevated platelet counts, which was consistent with the previous study [27]. The PLR is an important index that reflects a common clinical inflammatory reaction, which can identify patients with tumor-related inflammation. Moreover, in previously performed studies, the PLR was an independent prognostic factor for numerous solid tumors [28–31]. Tagawa et al. reported that in a training cohort with MPuM, multivariate analysis identified sex ( $P=0.005$ ) and PLR ( $P=0.049$ ) as independent predictors of overall survival, and patients with a high PLR had a poor prognosis [32]. Tural Onur et al. [7] revealed that the PLR level was a significant prognostic indicator of malignant mesothelioma at diagnosis on complete blood count parameters. In our study, the median PLR value was 278, and there was a significant difference between the survivals of high and low PLR groups (10 months vs 4 months, respectively); meanwhile, PLR was an independent prognostic factor for MPeM. The difference may be explained by the release of the platelet-derived growth factor, vascular endothelial growth factor, and thrombospondin 1. Further, platelets are recruited to the damaged site by diverse cytokines, thereby promoting tumor cell proliferation and adhesion [33].

The NLR can be easily calculated from differential WBC counts obtained through routine procedures, and it was a potential biomarker for stratification in clinical trials and for use in clinical practice. A prognostic role for NLR in MPuM was reported in a number of retrospective series [34]. The cutoff value for NLR used in our analyses was pre-specified according to previous reports, an important prerequisite for reliable validation. Our study validated independent prognostic factors, but did not find NLR to be an independent prognostic factor in this cohort of epithelioid MPeM patients. However, in univariate analysis, NLR was a meaningful positive indicator, suggesting that NLR has an impact on the prognosis of epithelioid MPeM.

The imbalance of oncogenes and tumor suppressors, abnormal cell signaling pathways, and abnormal cell cycle

TABLE 4: Univariate analyses of association of prognostic factors with overall survival of MPeM.

	<i>N</i>	No. of deaths	Median survival months (95% CI)	<i>P</i> value
Age				
<60	8	6	8 (3.32-12.68)	0.419
≥60	25	24	6 (2.76-9.24)	
Sex				
Female	24	22	6 (3.61-8.39)	0.856
Male	9	8	9 (0-23.61)	
PTEN				
Negative	26	26	4 (2.13-5.87)	0.000
Positive	7	4	15 (8.27-21.73)	
EGFR				
Negative	11	9	11 (8.05-13.95)	0.045
Positive	22	21	4 (2.28-5.72)	
Asbestos				
Absent	4	3	3 (0.00-9.86)	0.869
Present	29	27	6 (3.36-8.64)	
PLT ( $10^9/L$ )				
<300	9	7	10 (7.38-12.62)	0.214
≥300	24	23	4 (2.20-5.80)	
PLR				
<278	17	14	10 (7.54-12.46)	0.014
≥278	16	16	4 (2.70-5.30)	
NLR				
<5	16	13	9 (5.39-12.61)	0.015
≥5	17	17	4 (2.67-5.33)	
LYM ( $10^3/\mu L$ )				
<0.8	28	26	6 (2.90-9.10)	0.285
≥0.8	5	4	8 (3.71-12.29)	
Ascites				
Absent	6	6	10 (6.61-13.40)	0.406
Present	27	24	6 (3.50-8.50)	
Clinical stage				
I + II	21	18	7 (2.67-11.33)	0.036
III + IV	12	12	4 (0.61-7.40)	
Chemotherapy				
Yes	14	11	8 (4.73-11.27)	0.044
No	19	19	4 (1.44-6.56)	

regulation plays important roles in the cause and progression of tumors. EGFR promotes cell proliferation and angiogenesis and inhibits apoptosis as well as the escape of tumor cells from the immune response [10]. These cell membrane receptors play a central role in cell proliferation, differentiation, migration, adhesion, and survival [35]. EGFR is an upstream component of the PI3K/mTOR signaling pathway in human neoplasms and is overexpressed in numerous malignant carcinomas (such as breast cancer, gastrointestinal adenocarcinoma, colorectal cancer, and lung cancer [36–39]) and indicates poor prognosis of cancer [40]. Govindan et al. [41] examined paraffin-embedded sections of 24 cases of

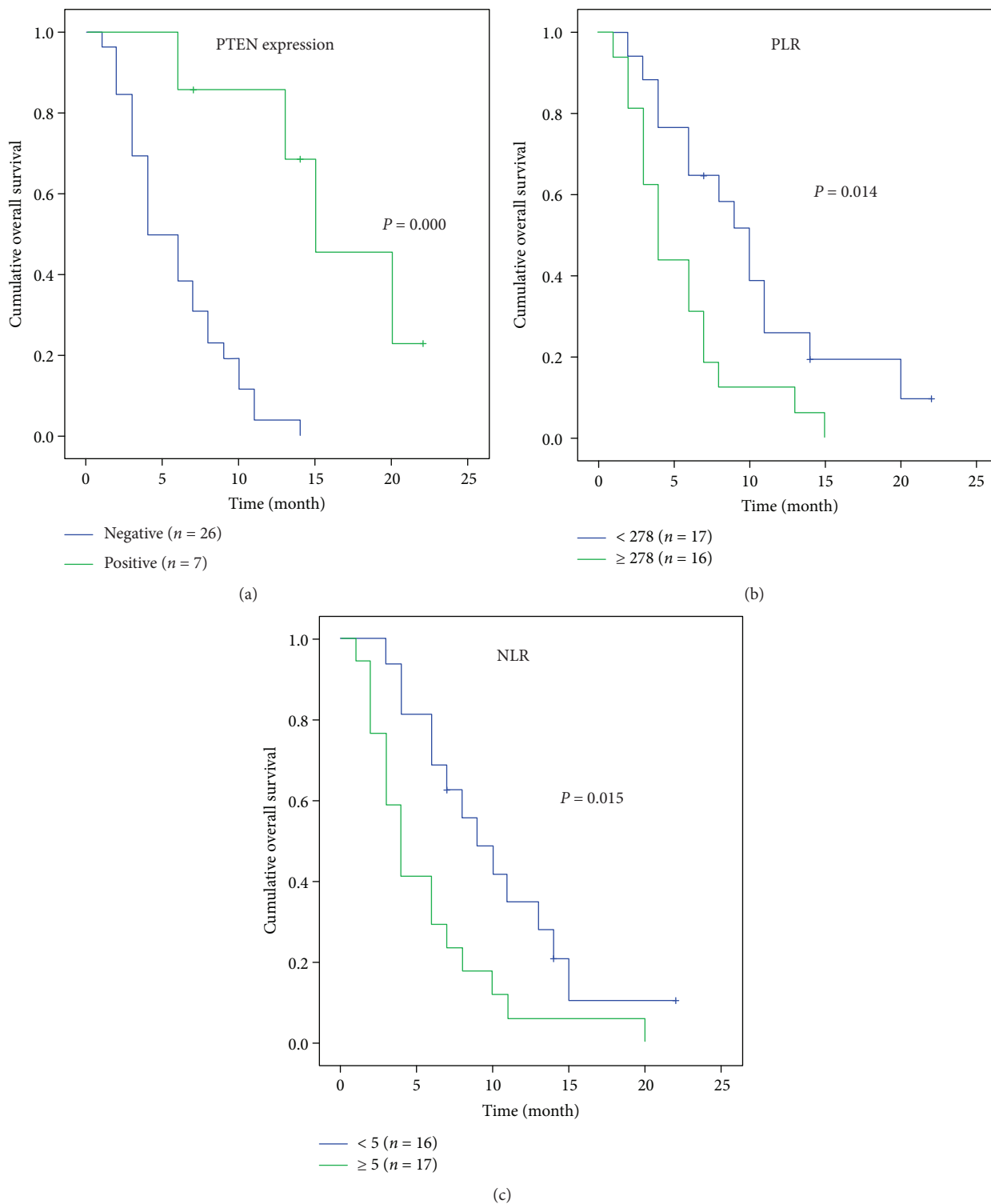


FIGURE 2: Univariate analyses of overall survival according to PTEN, PLR, and NLR at the time of diagnosis.

TABLE 5: COX analyses of prognostic factors with overall survival of MPeM.

		B	SE	Wald	df	Sig	Exp(B)	95.0% CI	
								Lower	Upper
Step 2	PTEN	-2.657	0.811	10.730	1	0.001	0.070	0.014	0.344
	PLR	1.218	0.451	7.282	1	0.007	3.379	1.395	8.181

MM (21 pleural MM) by immunohistochemistry and found EGFR expression in 14 (58%). Edwards et al. [42] found that EGFR expression was a common feature in MM and associated with a favorable prognosis, but it was not an independent prognostic factor when tested against other clinicopathological prognostic factors. In our study, we set  $P < 0.02$  for statistical significance in the univariate analysis. We found that EGFR was not statistically significant in the univariate analysis and was inconsistent with the above literature, which of course had a relationship with the  $P$  value we set. However, studies of a large number of patients with MPeM are therefore required to identify the mechanisms underlying these associations [43].

PTEN, which is mutated at the highest rate in human tumors after P53, resides in human chromosome 10q23.3 and encodes proteins regulating various signal transduction pathways and modulating cell growth processes, cell migration, and apoptosis [44]. PTEN arrests the cell cycle in the G1 phase [45], and the absence of PTEN may activate the PI3K/mTOR pathway. Accordingly, upregulation of the PI3K/mTOR pathway, often through loss of PTEN function, occurs in diverse cancers, including gastrointestinal adenocarcinoma [46], colorectal cancer, and esophageal squamous cell carcinoma [47]. One study demonstrated the prognostic significance of PTEN expression, which was undetectable in 62% of patients [14]. We reported here that PTEN was not detected in 78.79% of the peritoneal tissue samples, which was significantly higher than that reported above. The discrepancy may be explained by differences in the stages of disease and patients' characteristics. Moreover, loss of PTEN expression strongly correlates with shorter survival, and PTEN expression is an independent prognostic biomarker for patients with MPuM [21].

Our findings are in keeping with the extensive body of prior literature of clinical prognostic factors in this disease. For example, survival analysis revealed that patients who expressed PTEN survived significantly longer compared with those with undetectable PTEN expression. Further, consistent with our finding that PTEN expression was an independent prognostic factor for epithelioid MPeM, the regression coefficient was negative, and lower expression was associated with worse prognosis. Therefore, targeting the PI3K/mTOR pathway using inhibitors of components downstream of PTEN may improve patients' outcomes.

Clinical TNM stage can better reflect the degree of tumor development. It has a certain reference value for treatment and prognosis [48]. According to the presence or absence of lymph node and distant metastasis, MPeM is divided into stages I-IV. Although TNM staging is not statistically significant in the univariate analysis, which has something to do with the  $P$  value we set, the results of this study demonstrate that the prognosis of patients with stage I-II MPeM is significantly better than that of patients with stage III-IV MPeM, suggesting that the higher the stage of TNM, the greater the severity of the disease and the worse the prognosis. Therefore, early diagnosis and treatment are essential for improving survival.

MPeM lacks effective treatments. Intraperitoneal chemotherapy has a certain effect on this disease, and pemetrexed

combined with cisplatin has been approved as a first-line therapy for MPeM. Chemotherapy drugs can directly contact the tumor tissue, the local concentration is high, adverse reactions are less than in intravenous chemotherapy, and treatment is safe and effective, as the first choice for nonoperative treatment [49]. In our study, the median survival time was approximately 8 months for the chemotherapy group and 4 months for the nontreatment group. Although chemotherapy was not statistically significant in the univariate analysis, we discovered that systemic chemotherapy obviously prolongs the survival period. Therefore, active treatment is beneficial to the prognosis of patients, and patients should be guided and advocated for chemotherapy in order to prolong the survival time.

## 5. Conclusion

This is the first study to our knowledge to investigate the changes in expression of the biomarkers EGFR, PTEN, PLR, and NLR with the survival of patients with epithelioid MPeM. Our findings indicate that PTEN and PLR are independent prognostic factors of survival. The development of targeted therapies with demonstrable in vitro antitumor activity in epithelioid MPeM will provide a potential new approach for the management of patients afflicted by a tumor. Without a doubt, our research is based on retrospective analysis, so a large number of prospective studies are needed to prove the reliability of the parameters.

## Data Availability

The data used to support the findings of this study are available from the corresponding author upon request.

## Disclosure

The abstract had been presented as poster in the 17th Congress of Gastroenterology China.

## Conflicts of Interest

The authors have declared that no competing interests exist.

## Authors' Contributions

YL and GZ designed the study and wrote the paper. HS and WY analyzed the data with the SPSS statistical software. CL followed up with the patients. LT performed immunohistochemistry. All authors read and approved the final paper.

## Acknowledgments

We are grateful to the Department of Pathology, Cangzhou Central Hospital, for immunohistochemical staining and Cangzhou Medical College for statistical guidance. This work has been approved by Cangzhou Science and Technology Research and Development Plan (no. 1213018ZD) and Cangzhou Finance Bureau for funding the study (no. 2016-304).

## References

- [1] Y. F. Liang, G. Q. Zheng, Y. F. Chen, H. Song, W. J. Yin, and L. Zhang, "CT differentiation of diffuse malignant peritoneal mesothelioma and peritoneal carcinomatosis," *Journal of Gastroenterology and Hepatology*, vol. 31, no. 4, pp. 709–715, 2016.
- [2] N. Ibrahim, E. Abou-Elela, and D. Darwish, "Survival of mesothelioma in a palliative medical care unit in Egypt," *Asian Pacific Journal of Cancer Prevention*, vol. 14, no. 2, pp. 739–742, 2013.
- [3] S. I. Grivennikov, F. R. Greten, and M. Karin, "Immunity, inflammation, and cancer," *Cell*, vol. 140, no. 6, pp. 883–899, 2010.
- [4] K. Turkmen, F. M. Erdur, F. Ozcicek et al., "Platelet-to-lymphocyte ratio better predicts inflammation than neutrophil-to-lymphocyte ratio in end-stage renal disease patients," *Hemodialysis International*, vol. 17, no. 3, pp. 391–396, 2013.
- [5] Y. Ozdemir, M. L. Akin, I. Sucullu, A. Z. Balta, and E. Yucel, "Pretreatment neutrophil/lymphocyte ratio as a prognostic aid in colorectal cancer," *Asian Pacific Journal of Cancer Prevention*, vol. 15, no. 6, pp. 2647–2650, 2014.
- [6] G. I. Urrejola, C. E. Bambs, M. A. Espinoza et al., "An elevated neutrophil/lymphocyte ratio is associated with poor prognosis in stage II resected colon cancer," *Revista Médica de Chile*, vol. 141, no. 5, pp. 602–608, 2013.
- [7] S. Tural Onur, S. N. Sokucu, L. Dalar et al., "Are neutrophil/lymphocyte ratio and platelet/lymphocyte ratio reliable parameters as prognostic indicators in malignant mesothelioma?," *Therapeutics and Clinical Risk Management*, vol. 12, pp. 651–656, 2016.
- [8] T. M. Meniawy, J. Creaney, R. A. Lake, and A. K. Nowak, "Existing models, but not neutrophil-to-lymphocyte ratio, are prognostic in malignant mesothelioma," *British Journal of Cancer*, vol. 109, no. 7, pp. 1813–1820, 2013.
- [9] L. Willems, J. Tamburini, N. Chapuis, C. Lacombe, P. Mayeux, and D. Bouscary, "PI3K and mTOR signaling pathways in cancer: new data on targeted therapies," *Current Oncology Reports*, vol. 14, no. 2, pp. 129–138, 2012.
- [10] M. X. Sliwkowski and I. Mellman, "Antibody therapeutics in cancer," *Science*, vol. 341, no. 6151, pp. 1192–1198, 2013.
- [11] W. H. Shen, A. S. Balajee, J. Wang et al., "Essential role for nuclear PTEN in maintaining chromosomal integrity," *Cell*, vol. 128, no. 1, pp. 157–170, 2007.
- [12] K. Kaira, N. Oriuchi, T. Takahashi et al., "L-Type amino acid transporter 1 (LAT 1) expression in malignant pleural mesothelioma," *Anticancer Research*, vol. 31, no. 12, pp. 4075–4082, 2011.
- [13] X. Zhu, X. Qin, M. Fei et al., "Loss and reduced expression of PTEN correlate with advanced stage gastric carcinoma," *Experimental and Therapeutic Medicine*, vol. 5, no. 1, pp. 57–64, 2013.
- [14] V. Agarwal, A. Campbell, K. L. Beaumont, L. Cawkwell, and M. J. Lind, "PTEN protein expression in malignant pleural mesothelioma," *Tumour Biology*, vol. 34, no. 2, pp. 847–851, 2013.
- [15] Y. B. Cihan, A. Ozturk, and H. Mutlu, "Relationship between prognosis and neutrophil: lymphocyte and platelet: lymphocyte ratios in patients with malignant pleural mesotheliomas," *Asian Pacific Journal of Cancer Prevention*, vol. 15, no. 5, pp. 2061–2067, 2014.
- [16] Y. Enomoto, T. Kasai, M. Takeda et al., "A comparison of epidermal growth factor receptor expression in malignant peritoneal and pleural mesothelioma," *Pathology International*, vol. 62, no. 4, pp. 226–231, 2012.
- [17] A. N. Husain, T. Colby, N. Ordonez et al., "Guidelines for pathologic diagnosis of malignant mesothelioma: 2012 update of the consensus statement from the International Mesothelioma Interest Group," *Archives of Pathology & Laboratory Medicine*, vol. 137, no. 5, pp. 647–667, 2013.
- [18] Y. Zeng, R. Tong, X. Y. Wang, and H. Liang, "Clinical characteristics and prognostic factors of patients with malignant peritoneal mesothelioma: an analysis of 26 cases," *Academic Journal of Chinese PLA Medical School*, vol. 36, no. 6, pp. 559–562, 2015.
- [19] A. R. Zekri, A. A. Bahnassy, W. S. Mohamed et al., "Evaluation of simian virus-40 as a biological prognostic factor in Egyptian patients with malignant pleural mesothelioma," *Pathology International*, vol. 57, no. 8, pp. 493–501, 2007.
- [20] S. C. Kao, N. Pavlakis, R. Harvie et al., "High blood neutrophil-to-lymphocyte ratio is an indicator of poor prognosis in malignant mesothelioma patients undergoing systemic therapy," *Clinical Cancer Research*, vol. 16, no. 23, pp. 5805–5813, 2010.
- [21] I. Opitz, A. Soltermann, M. Abaecherli et al., "PTEN expression is a strong predictor of survival in mesothelioma patients," *European Journal of Cardio-Thoracic Surgery*, vol. 33, no. 3, pp. 502–506, 2008.
- [22] S. E. Haber and J. M. Haber, "Malignant mesothelioma: a clinical study of 238 cases," *Industrial Health*, vol. 49, no. 2, pp. 166–172, 2011.
- [23] S. C. Wei, G. Q. Zheng, Z. G. Wang et al., "Retrospective analysis of the clinical data of 162 cases of malignant peritoneal mesothelioma in Cangzhou," *Chinese Journal of Internal Medicine*, vol. 52, pp. 599–601, 2013.
- [24] V. Chew, H. C. Toh, and J. P. Abastado, "Immune microenvironment in tumor progression: characteristics and challenges for therapy," *Journal of Oncology*, vol. 2012, Article ID 608406, 10 pages, 2012.
- [25] K. Neofytou, E. C. Smyth, A. Giakoustidis, A. Z. Khan, D. Cunningham, and S. Mudan, "Elevated platelet to lymphocyte ratio predicts poor prognosis after hepatectomy for liver-only colorectal metastases, and it is superior to neutrophil to lymphocyte ratio as an adverse prognostic factor," *Medical Oncology*, vol. 31, no. 10, p. 239, 2014.
- [26] S. C. Wei, G. Q. Zheng, and W. Y. Bai, "Research progress of malignant peritoneal mesothelioma," *Chinese Journal of Digestion*, vol. 34, pp. 212–214, 2014.
- [27] P. Manzini Vde, L. Recchia, M. Cafferata et al., "Malignant peritoneal mesothelioma: a multicenter study on 81 cases," *Annals of Oncology*, vol. 21, no. 2, pp. 348–353, 2010.
- [28] A. J. Templeton, O. Ace, M. G. McNamara et al., "Prognostic role of platelet to lymphocyte ratio in solid tumors: a systematic review and meta-analysis," *Cancer Epidemiology, Biomarkers & Prevention*, vol. 23, no. 7, pp. 1204–1212, 2014.
- [29] H. C. Kwon, S. H. Kim, S. Y. Oh et al., "Clinical significance of preoperative neutrophil-lymphocyte versus platelet-lymphocyte ratio in patients with operable colorectal cancer," *Biomarkers*, vol. 17, no. 3, pp. 216–222, 2012.
- [30] S. Lee, S. Y. Oh, S. H. Kim et al., "Prognostic significance of neutrophil lymphocyte ratio and platelet lymphocyte ratio in



- advanced gastric cancer patients treated with FOLFOX chemotherapy,” *BMC Cancer*, vol. 13, no. 1, pp. 350–359, 2013.
- [31] R. A. Smith, L. Bosonnet, M. Raraty et al., “Preoperative platelet lymphocyte ratio is an independent significant prognostic marker in resected pancreatic ductal adenocarcinoma,” *American Journal of Surgery*, vol. 197, no. 4, pp. 466–472, 2009.
- [32] T. Tagawa, M. Anraku, Y. Morodomi et al., “Clinical role of a new prognostic score using platelet-to-lymphocyte ratio in patients with malignant pleural mesothelioma undergoing extrapleural pneumonectomy,” *Journal of Thoracic Disease*, vol. 7, no. 11, pp. 1898–1906, 2015.
- [33] M. Labelle, S. Begum, and R. O. Hynes, “Direct signaling between platelets and cancer cells induces an epithelial-mesenchymal-like transition and promotes metastasis,” *Cancer Cell*, vol. 20, no. 5, pp. 576–590, 2011.
- [34] S. C. Kao, J. Vardy, M. Chatfield et al., “Validation of prognostic factors in malignant pleural mesothelioma: a retrospective analysis of data from patients seeking compensation from the New South Wales Dust Diseases Board,” *Clinical Lung Cancer*, vol. 14, no. 1, pp. 70–77, 2013.
- [35] Y. Yarden, “The EGFR family and its ligands in human cancer: signalling mechanisms and therapeutic opportunities,” *European Journal of Cancer*, vol. 37, pp. 3–8, 2001.
- [36] H. S. Park, M. H. Jang, E. J. Kim et al., “High *EGFR* gene copy number predicts poor outcome in triple-negative breast cancer,” *Modern Pathology*, vol. 27, no. 9, pp. 1212–1222, 2014.
- [37] T. Mizukarni, Y. togashi, S. Sogabe et al., “EGFR and HER2 signals play a salvage role in MEK1-mutated gastric cancer after MEK inhibition,” *International Journal of Oncology*, vol. 47, no. 2, pp. 499–505, 2015.
- [38] B. Pabla, M. Bissonnette, and V. J. Konda, “Colon cancer and the epidermal growth factor receptor: current treatment paradigms, the importance of diet, and the role of chemoprevention,” *World J Clin Oncol*, vol. 6, no. 5, pp. 133–141, 2015.
- [39] T. J. Lynch, D. W. Bell, R. Sordella et al., “Activating mutations in the epidermal growth factor receptor underlying responsiveness of non-small-cell lung cancer to gefitinib,” *The New England Journal of Medicine*, vol. 350, no. 21, pp. 2129–2139, 2004.
- [40] M. S. Stonecypher, A. R. Chaudhury, S. J. Byer, and S. L. Carroll, “Neuregulin growth factors and their ErbB receptors form a potential signaling network for schwannoma tumorigenesis,” *Journal of Neuropathology and Experimental Neurology*, vol. 65, no. 2, pp. 162–175, 2006.
- [41] R. Govindan, J. Ritter, and R. Suppiah, “EGFR and HER-2 overexpression in malignant mesothelioma,” *American Society of Clinical Oncology*, vol. 20, p. 3106, 2001.
- [42] J. G. Edwards, D. E. Swinson, J. L. Jones, D. A. Waller, and K. J. O’Byrne, “EGFR expression: associations with outcome and clinicopathological variables in malignant pleural mesothelioma,” *Lung Cancer*, vol. 54, no. 3, pp. 399–407, 2006.
- [43] R. Gaafar, A. Bahnassy, I. Abdelsalam et al., “Tissue and serum EGFR as prognostic factors in malignant pleural mesothelioma,” *Lung Cancer*, vol. 70, no. 1, pp. 43–50, 2010.
- [44] A. Di Cristofano and P. P. Pandolfi, “The multiple roles of PTEN in tumor suppression,” *Cell*, vol. 100, no. 4, pp. 387–390, 2000.
- [45] N. Tanic, Z. Milovanovic, R. Dzodic et al., “The impact of PTEN tumor suppressor gene on acquiring resistance to tamoxifen treatment in breast cancer patients,” *Cancer Biology & Therapy*, vol. 13, no. 12, pp. 1165–1174, 2012.
- [46] L. G. Zhang, J. G. Jia, X. Jin, B. Xie, Z. R. Cheng, and J. Qian, “The expression of PTEN and P-AKT in gastric carcinoma and its significance,” *Journal of Bengbu Medical College*, vol. 39, pp. 291–294, 2014.
- [47] W. J. Ma, G. D. Lv, A. Tuersun et al., “Role of microRNA-21 and effect on PTEN in Kazakh’s esophageal squamous cell carcinoma,” *Molecular Biology Reports*, vol. 38, no. 5, pp. 3253–3260, 2011.
- [48] T. D. Yan, M. Deraco, D. Elias et al., “A novel tumor-node-metastasis (TNM) staging system of diffuse malignant peritoneal mesothelioma using outcome analysis of a multi-institutional database,” *Cancer*, vol. 117, no. 9, pp. 1855–1863, 2011.
- [49] T. D. Yan, E. A. Brun, C. A. Cerruto, N. Haveric, D. Chang, and P. H. Sugarbaker, “Prognostic indicators for patients undergoing cytoreductive surgery and perioperative intraperitoneal chemotherapy for diffuse malignant peritoneal mesothelioma,” *Annals of Surgical Oncology*, vol. 14, no. 1, pp. 41–49, 2007.