

Acta Crystallographica Section E

Structure Reports

Online

ISSN 1600-5368

1-(4-Carboxyphenyl)-1*H*-imidazol-3-ium chloride dihydrate

Zhi-Peng Yu, Wen-Qian Geng, Lin Kong and Hong-Ping Zhou*

Department of Chemistry, Anhui University, Key Laboratory of Functional Inorganic Materials Chemistry, Hefei 230039, People's Republic of China
Correspondence e-mail: zhpzhp@263.net

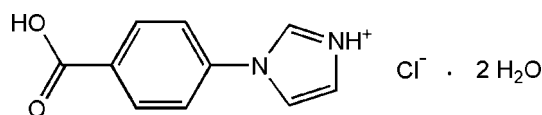
Received 30 December 2010; accepted 12 January 2011

Key indicators: single-crystal X-ray study; $T = 298$ K; mean $\sigma(\text{C}-\text{C}) = 0.003$ Å; R factor = 0.040; wR factor = 0.146; data-to-parameter ratio = 12.4.

In the crystal structure of the title compound, $\text{C}_{10}\text{H}_9\text{N}_2\text{O}_2^+\cdot\text{Cl}^- \cdot 2\text{H}_2\text{O}$, the components are linked by $\text{O}-\text{H}\cdots\text{O}$, $\text{N}-\text{H}\cdots\text{O}$, $\text{O}-\text{H}\cdots\text{Cl}$ and $\text{N}-\text{H}\cdots\text{Cl}$ hydrogen bonds. In the cation, the imidazole ring is oriented at a dihedral angle of 13.67 (17)° with respect to the benzene ring. In the crystal, $\pi-\pi$ stacking occurs between nearly parallel benzene rings, which are oriented at a dihedral angle of 3.4 (1)°, the centroid-centroid distance being 3.798 (3) Å.

Related literature

For related imidazole-containing compounds, see: Nyamori & Bala (2008); Nie *et al.* (2009).



Experimental

Crystal data

$\text{C}_{10}\text{H}_9\text{N}_2\text{O}_2^+\cdot\text{Cl}^- \cdot 2\text{H}_2\text{O}$
 $M_r = 260.67$
Orthorhombic, *Pbca*
 $a = 7.427$ (5) Å
 $b = 17.708$ (5) Å
 $c = 18.748$ (5) Å

$V = 2465.7$ (19) Å³
 $Z = 8$
Mo $K\alpha$ radiation
 $\mu = 0.32$ mm⁻¹
 $T = 298$ K
 $0.30 \times 0.20 \times 0.20$ mm

Data collection

Bruker SMART CCD area-detector diffractometer
Absorption correction: multi-scan (*SADABS*; Bruker, 2001)
 $T_{\min} = 0.912$, $T_{\max} = 0.940$
14555 measured reflections
2165 independent reflections
1515 reflections with $I > 2\sigma(I)$
 $R_{\text{int}} = 0.033$

Refinement

$R[F^2 > 2\sigma(F^2)] = 0.040$
 $wR(F^2) = 0.146$
 $S = 0.96$
2165 reflections
175 parameters
H atoms treated by a mixture of independent and constrained refinement
 $\Delta\rho_{\max} = 0.20$ e Å⁻³
 $\Delta\rho_{\min} = -0.32$ e Å⁻³

Table 1
Hydrogen-bond geometry (Å, °).

<i>D</i> -H \cdots <i>A</i>	<i>D</i> -H	H \cdots <i>A</i>	<i>D</i> \cdots <i>A</i>	<i>D</i> -H \cdots <i>A</i>
N2-H2 \cdots O1 ⁱ	0.86	2.21	2.822 (3)	128
N2-H2 \cdots Cl1 ⁱⁱ	0.86	2.62	3.231 (2)	129
O2-H7 \cdots O4 ⁱⁱⁱ	0.82	1.77	2.594 (3)	177
O3-H10 \cdots Cl1 ^{iv}	0.83 (4)	2.36 (4)	3.150 (3)	159 (3)
O3-H11 \cdots Cl1 ^v	0.94 (5)	2.22 (5)	3.141 (3)	168 (3)
O4-H12 \cdots O3	0.76 (4)	1.99 (4)	2.718 (4)	162 (4)
O4-H13 \cdots Cl1	0.86 (4)	2.22 (4)	3.066 (4)	172 (3)

Symmetry codes: (i) $-x + \frac{3}{2}, -y, z - \frac{1}{2}$; (ii) $x - \frac{1}{2}, -y + \frac{1}{2}, -z$; (iii) $x, -y + \frac{1}{2}, z + \frac{1}{2}$; (iv) $x - \frac{1}{2}, y, -z + \frac{1}{2}$; (v) $x - 1, y, z$.

Data collection: *SMART* (Bruker, 2007); cell refinement: *SAINTE* (Bruker, 2007); data reduction: *SAINTE*; program(s) used to solve structure: *SHELXTL* (Sheldrick, 2008); program(s) used to refine structure: *SHELXTL*; molecular graphics: *SHELXTL*; software used to prepare material for publication: *SHELXTL*.

This work was supported by grants from the National Natural Science Foundation of China (21071001), the Education Committee of Anhui Province (KJ2009A52, KJ2010A30), the Team for Scientific Innovation Foundation of Anhui Province (2006 K J007TD), the Ministry of Education Person with Ability Foundation of Anhui University, the Science and Technological Fund of Anhui Province for Outstanding Youth (10040606Y22), and the 211 Project of Anhui University.

Supplementary data and figures for this paper are available from the IUCr electronic archives (Reference: XU5134).

References

- Bruker (2001). *SADABS*. Bruker AXS Inc., Madison, Wisconsin, USA.
Bruker (2007). *SAMART* and *SAINTE*. Bruker AXS Inc., Madison, Wisconsin, USA.
Nie, J.-J., Li, J.-H. & Xu, D.-J. (2009). *Acta Cryst.* **E65**, m822-m823.
Nyamori, V. O. & Bala, M. D. (2008). *Acta Cryst.* **E64**, m1451.
Sheldrick, G. M. (2008). *Acta Cryst.* **A64**, 112-122.

supplementary materials

Acta Cryst. (2011). E67, o452 [doi:10.1107/S1600536811001838]

1-(4-Carboxyphenyl)-1*H*-imidazol-3-ium chloride dihydrate

Z.-P. Yu, W.-Q. Geng, L. Kong and H.-P. Zhou

Comment

Imidazol - based materials had been investigated for their electrical and optical properties. Beside, the introduction about the structure of its complex has been reported (Nie *et al.*, 2009). The title molecule that we has designed and synthesized is a good intermediate and penetratingly investigated. In the title molecule(I) (Fig.1), the bond lengths and angles show normal values. The imidazole ring is twisted out of the plane of the center benzene ring at a dihedral angle of 13.67 (17) $^{\circ}$. In the title molecule (I) (Fig.2), the neighboring molecules connect through O—H \cdots O, N—H \cdots O, O—H \cdots Cl and N—H \cdots Cl hydrogen bonds (Table 1). π - π stacking is observed between nearly parallel benzene rings, the centroids distance being 3.798 (3) \AA .

Experimental

A 150 ml round-bottom flask was charged with a magnetic stirrer and a reflux condenser, iminazole (44 mmol), K_2CO_3 (6.00 g, 43 mmol), 30 ml DMSO and a little Aliquat 336 were added. 4-Fluorobenzaldehyde (4.5 ml, 42 mmol) was added dropwise to the mixture at 363 K and stirred for 15 min. Then the reaction mixture was refluxed for 24 h at 353 K, cooled to room temperature, poured into 150 ml ice-water and filtered. The primrose yellow crude product was obtained, washed with distilled water, and dried *in vacuo* at room temperature, then purified by recrystallization with ethyl acetate to give the desired analytical pure intermediate products. Intermediate product (12.5 mmol) and 15 ml 20% (wt) NaOH (aq) were added to a round-bottom flask equipped with a magnetic stirrer and a reflux condenser at 333 K for 30 min. Then AgNO_3 (4.00 g, 24 mmol) was added to the mixture group by group. The reaction mixture was refluxed for 24 h at 333 K, cooled to room temperature and filtered. Excessive HCl (1 *M*) was added to the filtrate and adjust pH to 2, a great deal of sediments were obtained and then filtered. The crude product was recrystallized from ethanol-water solution.

Refinement

Water H atoms were located in a difference Fourier map and refined isotropically. Other H atoms were placed in geometrically idealized positions and constrained to ride on their parent atoms, with O—H = 0.82 and C—H = 0.93 \AA , $U_{\text{iso}}(\text{H}) = 1.5U_{\text{eq}}(\text{O})$ and $1.2U_{\text{eq}}(\text{C})$.

Figures

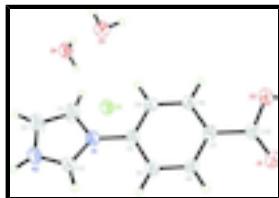


Fig. 1. The molecular structure of the title molecule(I) showing 30% probability displacement ellipsoids.

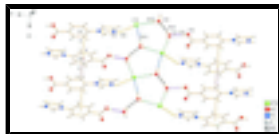


Fig. 2. The H-bond and weak π - π interaction diagram of the title molecule(I).

1-(4-Carboxyphenyl)-1H-imidazol-3-ium chloride dihydrate

Crystal data

$C_{10}H_9N_2O_2^+ \cdot Cl^- \cdot 2H_2O$

$M_r = 260.67$

Orthorhombic, *Pbca*

Hall symbol: -P 2ac 2ab

$a = 7.427(5) \text{ \AA}$

$b = 17.708(5) \text{ \AA}$

$c = 18.748(5) \text{ \AA}$

$V = 2465.7(19) \text{ \AA}^3$

$Z = 8$

$F(000) = 1088$

$D_x = 1.404 \text{ Mg m}^{-3}$

Mo $K\alpha$ radiation, $\lambda = 0.71069 \text{ \AA}$

Cell parameters from 3445 reflections

$\theta = 2.3\text{--}21.7^\circ$

$\mu = 0.32 \text{ mm}^{-1}$

$T = 298 \text{ K}$

Block, yellow

$0.30 \times 0.20 \times 0.20 \text{ mm}$

Data collection

Bruker SMART CCD area-detector diffractometer

Radiation source: fine-focus sealed tube graphite

φ and ω scans

Absorption correction: multi-scan (*SADABS*; Bruker, 2001)

$T_{\min} = 0.912$, $T_{\max} = 0.940$

14555 measured reflections

2165 independent reflections

1515 reflections with $I > 2\sigma(I)$

$R_{\text{int}} = 0.033$

$\theta_{\max} = 25.0^\circ$, $\theta_{\min} = 2.3^\circ$

$h = -8 \rightarrow 7$

$k = -21 \rightarrow 16$

$l = -17 \rightarrow 22$

Refinement

Refinement on F^2

Least-squares matrix: full

$R[F^2 > 2\sigma(F^2)] = 0.040$

$wR(F^2) = 0.146$

$S = 0.96$

2165 reflections

175 parameters

0 restraints

Primary atom site location: structure-invariant direct methods

Secondary atom site location: difference Fourier map

Hydrogen site location: inferred from neighbouring sites

H atoms treated by a mixture of independent and constrained refinement

$w = 1/[\sigma^2(F_o^2) + (0.1P)^2 + 0.3P]$

where $P = (F_o^2 + 2F_c^2)/3$

$(\Delta/\sigma)_{\max} < 0.001$

$\Delta\rho_{\max} = 0.20 \text{ e \AA}^{-3}$

$\Delta\rho_{\min} = -0.32 \text{ e \AA}^{-3}$

Special details

Geometry. All e.s.d.'s (except the e.s.d. in the dihedral angle between two l.s. planes) are estimated using the full covariance matrix. The cell e.s.d.'s are taken into account individually in the estimation of e.s.d.'s in distances, angles and torsion angles; correlations between e.s.d.'s in cell parameters are only used when they are defined by crystal symmetry. An approximate (isotropic) treatment of cell e.s.d.'s is used for estimating e.s.d.'s involving l.s. planes.

Refinement. Refinement of F^2 against ALL reflections. The weighted R -factor wR and goodness of fit S are based on F^2 , conventional R -factors R are based on F , with F set to zero for negative F^2 . The threshold expression of $F^2 > \sigma(F^2)$ is used only for calculating R -factors(gt) *etc.* and is not relevant to the choice of reflections for refinement. R -factors based on F^2 are statistically about twice as large as those based on F , and R -factors based on ALL data will be even larger.

Fractional atomic coordinates and isotropic or equivalent isotropic displacement parameters (\AA^2)

	<i>x</i>	<i>y</i>	<i>z</i>	$U_{\text{iso}}^*/U_{\text{eq}}$
C11	0.99581 (9)	0.35765 (4)	0.14987 (4)	0.0637 (3)
O3	0.4071 (3)	0.34344 (12)	0.18640 (13)	0.0661 (6)
N1	0.6552 (3)	0.13527 (10)	0.12446 (10)	0.0467 (5)
C4	0.6689 (3)	0.11991 (13)	0.19963 (12)	0.0423 (6)
O4	0.6325 (4)	0.41591 (12)	0.09501 (10)	0.0628 (6)
O2	0.6026 (3)	0.11860 (11)	0.46109 (9)	0.0678 (6)
H7	0.6154	0.1068	0.5031	0.102*
O1	0.7751 (3)	0.01818 (11)	0.44419 (10)	0.0717 (6)
C10	0.6934 (3)	0.07130 (14)	0.42051 (13)	0.0484 (6)
C6	0.7468 (3)	0.03739 (12)	0.29454 (12)	0.0473 (6)
H6	0.7936	-0.0083	0.3105	0.057*
C7	0.6859 (3)	0.09017 (12)	0.34359 (12)	0.0436 (6)
C5	0.7388 (3)	0.05180 (13)	0.22262 (12)	0.0481 (6)
H5	0.7798	0.0163	0.1899	0.058*
C8	0.6198 (3)	0.15821 (13)	0.31931 (13)	0.0483 (6)
H8	0.5805	0.1941	0.3520	0.058*
C9	0.6110 (3)	0.17379 (12)	0.24755 (13)	0.0469 (6)
H9	0.5667	0.2199	0.2316	0.056*
N2	0.6424 (3)	0.12032 (12)	0.01107 (11)	0.0572 (6)
H2	0.6454	0.0992	-0.0302	0.069*
C3	0.6691 (3)	0.08596 (14)	0.07173 (13)	0.0532 (7)
H3	0.6941	0.0348	0.0771	0.064*
C2	0.6095 (6)	0.19392 (17)	0.02329 (16)	0.0848 (11)
C1	0.6184 (6)	0.20415 (17)	0.09362 (16)	0.0934 (12)
H1	0.6026	0.2496	0.1176	0.112*
H12	0.554 (5)	0.402 (2)	0.117 (2)	0.079 (13)*
H13	0.734 (5)	0.3965 (18)	0.1065 (16)	0.076 (11)*
H11	0.283 (6)	0.341 (2)	0.179 (2)	0.118 (15)*
H10	0.421 (6)	0.359 (2)	0.228 (2)	0.112 (15)*
H4	0.597 (5)	0.230 (2)	-0.017 (2)	0.112 (12)*

supplementary materials

Atomic displacement parameters (\AA^2)

	U^{11}	U^{22}	U^{33}	U^{12}	U^{13}	U^{23}
C11	0.0640 (5)	0.0782 (5)	0.0489 (5)	-0.0013 (3)	0.0008 (3)	-0.0005 (3)
O3	0.0661 (15)	0.0778 (14)	0.0545 (14)	0.0097 (11)	0.0031 (11)	-0.0011 (11)
N1	0.0583 (12)	0.0435 (11)	0.0383 (11)	-0.0004 (9)	-0.0028 (9)	-0.0008 (9)
C4	0.0480 (13)	0.0421 (12)	0.0370 (13)	-0.0030 (10)	-0.0038 (10)	-0.0021 (10)
O4	0.0735 (15)	0.0696 (13)	0.0452 (12)	0.0004 (13)	0.0000 (12)	0.0038 (9)
O2	0.0905 (15)	0.0737 (12)	0.0393 (10)	0.0220 (11)	0.0038 (10)	0.0017 (10)
O1	0.0959 (15)	0.0695 (12)	0.0497 (11)	0.0272 (12)	-0.0011 (10)	0.0107 (9)
C10	0.0514 (14)	0.0493 (13)	0.0444 (14)	0.0007 (12)	-0.0044 (12)	-0.0011 (12)
C6	0.0571 (14)	0.0351 (11)	0.0497 (14)	0.0043 (11)	-0.0047 (12)	0.0016 (11)
C7	0.0460 (13)	0.0431 (13)	0.0416 (13)	-0.0026 (10)	-0.0050 (10)	0.0009 (10)
C5	0.0623 (15)	0.0406 (13)	0.0413 (13)	0.0032 (11)	0.0000 (12)	-0.0057 (11)
C8	0.0602 (16)	0.0449 (13)	0.0397 (14)	0.0045 (11)	-0.0018 (11)	-0.0059 (10)
C9	0.0583 (15)	0.0374 (11)	0.0450 (14)	0.0064 (11)	-0.0015 (11)	0.0012 (11)
N2	0.0716 (15)	0.0631 (14)	0.0369 (12)	-0.0002 (11)	-0.0019 (10)	-0.0056 (10)
C3	0.0677 (17)	0.0500 (14)	0.0420 (14)	0.0050 (12)	-0.0007 (12)	-0.0075 (12)
C2	0.152 (3)	0.0592 (19)	0.0428 (17)	0.011 (2)	-0.0073 (19)	0.0062 (14)
C1	0.186 (4)	0.0480 (16)	0.0467 (17)	0.017 (2)	-0.010 (2)	0.0026 (13)

Geometric parameters (\AA , $^\circ$)

O3—H11	0.94 (5)	C6—C7	1.387 (3)
O3—H10	0.83 (4)	C6—H6	0.9300
N1—C3	1.323 (3)	C7—C8	1.379 (3)
N1—C1	1.377 (3)	C5—H5	0.9300
N1—C4	1.439 (3)	C8—C9	1.375 (3)
C4—C9	1.379 (3)	C8—H8	0.9300
C4—C5	1.382 (3)	C9—H9	0.9300
O4—H12	0.76 (4)	N2—C3	1.305 (3)
O4—H13	0.86 (3)	N2—C2	1.346 (4)
O2—C10	1.317 (3)	N2—H2	0.8600
O2—H7	0.8200	C3—H3	0.9300
O1—C10	1.204 (3)	C2—C1	1.333 (4)
C10—C7	1.481 (3)	C2—H4	0.99 (4)
C6—C5	1.373 (3)	C1—H1	0.9300
H11—O3—H10	106 (4)	C4—C5—H5	120.5
C3—N1—C1	106.6 (2)	C9—C8—C7	121.0 (2)
C3—N1—C4	127.0 (2)	C9—C8—H8	119.5
C1—N1—C4	126.3 (2)	C7—C8—H8	119.5
C9—C4—C5	121.2 (2)	C8—C9—C4	118.9 (2)
C9—C4—N1	119.0 (2)	C8—C9—H9	120.5
C5—C4—N1	119.8 (2)	C4—C9—H9	120.5
H12—O4—H13	115 (3)	C3—N2—C2	109.3 (2)
C10—O2—H7	109.5	C3—N2—H2	125.3
O1—C10—O2	122.8 (2)	C2—N2—H2	125.3

O1—C10—C7	123.6 (2)	N2—C3—N1	109.4 (2)
O2—C10—C7	113.6 (2)	N2—C3—H3	125.3
C5—C6—C7	120.8 (2)	N1—C3—H3	125.3
C5—C6—H6	119.6	C1—C2—N2	106.9 (3)
C7—C6—H6	119.6	C1—C2—H4	132 (2)
C8—C7—C6	119.1 (2)	N2—C2—H4	121 (2)
C8—C7—C10	122.1 (2)	C2—C1—N1	107.8 (3)
C6—C7—C10	118.8 (2)	C2—C1—H1	126.1
C6—C5—C4	119.0 (2)	N1—C1—H1	126.1
C6—C5—H5	120.5		
C3—N1—C4—C9	-165.3 (2)	C6—C7—C8—C9	1.0 (4)
C1—N1—C4—C9	12.2 (4)	C10—C7—C8—C9	-178.7 (2)
C3—N1—C4—C5	14.4 (4)	C7—C8—C9—C4	0.3 (4)
C1—N1—C4—C5	-168.1 (3)	C5—C4—C9—C8	-1.5 (4)
C5—C6—C7—C8	-1.1 (4)	N1—C4—C9—C8	178.3 (2)
C5—C6—C7—C10	178.6 (2)	C2—N2—C3—N1	-0.2 (3)
O1—C10—C7—C8	-167.9 (3)	C1—N1—C3—N2	-0.3 (3)
O2—C10—C7—C8	11.7 (3)	C4—N1—C3—N2	177.6 (2)
O1—C10—C7—C6	12.4 (4)	C3—N2—C2—C1	0.6 (4)
O2—C10—C7—C6	-168.0 (2)	N2—C2—C1—N1	-0.7 (4)
C7—C6—C5—C4	0.0 (4)	C3—N1—C1—C2	0.6 (4)
C9—C4—C5—C6	1.4 (4)	C4—N1—C1—C2	-177.3 (3)
N1—C4—C5—C6	-178.4 (2)		

Hydrogen-bond geometry (\AA , $^\circ$)

$D-H\cdots A$	$D-H$	$H\cdots A$	$D\cdots A$	$D-H\cdots A$
N2—H2 \cdots O1 ⁱ	0.86	2.21	2.822 (3)	128
N2—H2 \cdots Cl1 ⁱⁱ	0.86	2.62	3.231 (2)	129
O2—H7 \cdots O4 ⁱⁱⁱ	0.82	1.77	2.594 (3)	177
O3—H10 \cdots Cl1 ^{iv}	0.83 (4)	2.36 (4)	3.150 (3)	159 (3)
O3—H11 \cdots Cl1 ^v	0.94 (5)	2.22 (5)	3.141 (3)	168 (3)
O4—H12 \cdots O3	0.76 (4)	1.99 (4)	2.718 (4)	162 (4)
O4—H13 \cdots Cl1	0.86 (4)	2.22 (4)	3.066 (4)	172 (3)

Symmetry codes: (i) $-x+3/2, -y, z-1/2$; (ii) $x-1/2, -y+1/2, -z$; (iii) $x, -y+1/2, z+1/2$; (iv) $x-1/2, y, -z+1/2$; (v) $x-1, y, z$.

Fig. 1

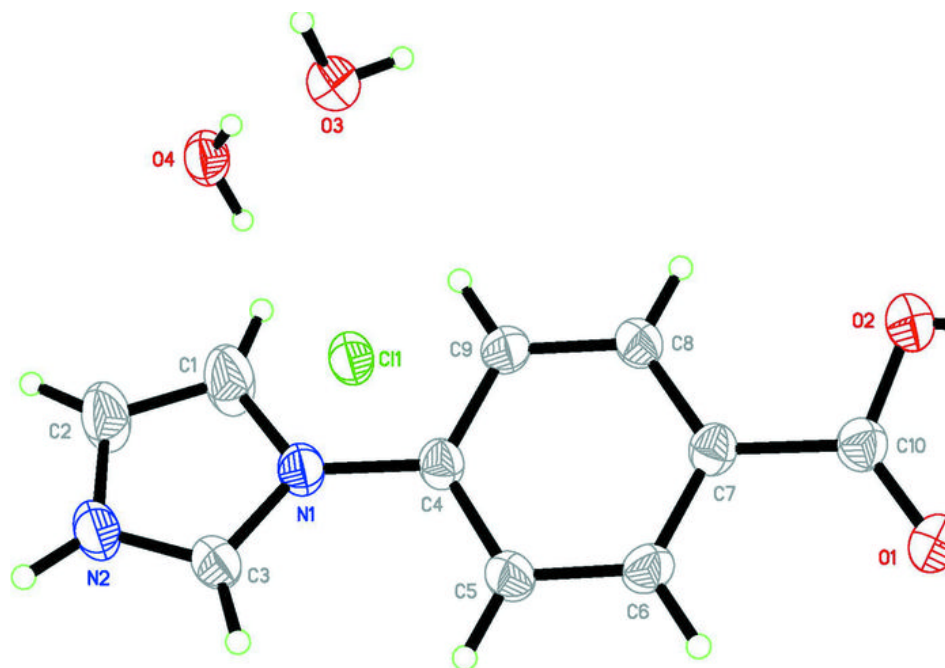


Fig. 2

