

BRAIN COMMUNICATIONS

Grey matter network markers identify individuals with prodromal Alzheimer's disease who will show rapid clinical decline

 **Wiesje Pelkmans,¹ Ellen M. Vromen,¹ Ellen Dicks,^{1,2} Philip Scheltens,¹ Charlotte E. Teunissen,³ Frederik Barkhof,^{4,5} Wiesje M. van der Flier,^{1,6} and Betty M. Tijms¹; for the Alzheimer's Disease Neuroimaging Initiative***

* Data used in preparation of this article were obtained from the Alzheimer's Disease Neuroimaging Initiative (ADNI) database (adni.loni.usc.edu). As such, the investigators within the ADNI contributed to the design and implementation of ADNI and/or provided data but did not participate in analysis or writing of this report. A complete listing of ADNI investigators can be found at http://adni.loni.usc.edu/wp-content/uploads/how_to_apply/ADNI_Acknowledgement_List.pdf

Individuals with prodromal Alzheimer's disease show considerable variability in rates of cognitive decline, which hampers the ability to detect potential treatment effects in clinical trials. Prognostic markers to select those individuals who will decline rapidly within a trial time frame are needed. Brain network measures based on grey matter covariance patterns have been associated with future cognitive decline in Alzheimer's disease. In this longitudinal cohort study, we investigated whether cut-offs for grey matter networks could be derived to detect fast disease progression at an individual level. We further tested whether detection was improved by adding other biomarkers known to be associated with future cognitive decline [i.e. CSF tau phosphorylated at threonine 181 (p-tau181) levels and hippocampal volume]. We selected individuals with mild cognitive impairment and abnormal CSF amyloid β_{1-42} levels from the Amsterdam Dementia Cohort and the Alzheimer's Disease Neuroimaging Initiative, when they had available baseline structural MRI and clinical follow-up. The outcome was progression to dementia within 2 years. We determined prognostic cut-offs for grey matter network properties (gamma, lambda and small-world coefficient) using time-dependent receiver operating characteristic analysis in the Amsterdam Dementia Cohort. We tested the generalization of cut-offs in the Alzheimer's Disease Neuroimaging Initiative, using logistic regression analysis and classification statistics. We further tested whether combining these with CSF p-tau181 and hippocampal volume improved the detection of fast decliners. We observed that within 2 years, 24.6% (Amsterdam Dementia Cohort, $n = 244$) and 34.0% (Alzheimer's Disease Neuroimaging Initiative, $n = 247$) of prodromal Alzheimer's disease patients progressed to dementia. Using the grey matter network cut-offs for progression, we could detect fast progressors with 65% accuracy in the Alzheimer's Disease Neuroimaging Initiative. Combining grey matter network measures with CSF p-tau and hippocampal volume resulted in the best model fit for classification of rapid decliners, increasing detecting accuracy to 72%. These data suggest that single-subject grey matter connectivity networks indicative of a more random network organization can contribute to identifying prodromal Alzheimer's disease individuals who will show rapid disease progression. Moreover, we found that combined with p-tau and hippocampal volume this resulted in the highest accuracy. This could facilitate clinical trials by increasing chances to detect effects on clinical outcome measures.

- 1 Alzheimer Center Amsterdam, Department of Neurology, Amsterdam Neuroscience, Vrije Universiteit Amsterdam, Amsterdam UMC, Amsterdam, The Netherlands
- 2 Department of Neurology, Mayo Clinic, Rochester, MN, USA
- 3 Neurochemistry Laboratory, Department of Clinical Chemistry, Amsterdam Neuroscience, Vrije Universiteit Amsterdam, Amsterdam UMC, Amsterdam, The Netherlands

Received September 24, 2021. Revised November 22, 2021. Accepted February 7, 2022. Advance access publication February 8, 2022

© The Author(s) 2022. Published by Oxford University Press on behalf of the Guarantors of Brain.

This is an Open Access article distributed under the terms of the Creative Commons Attribution License (<https://creativecommons.org/licenses/by/4.0/>), which permits unrestricted reuse, distribution, and reproduction in any medium, provided the original work is properly cited.

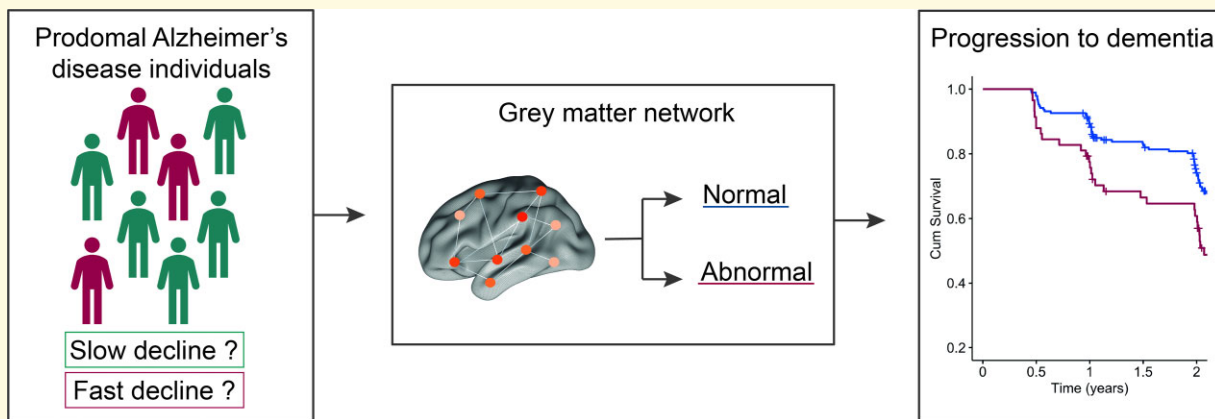
- 4 Department of Radiology & Nuclear Medicine, Amsterdam Neuroscience, Vrije Universiteit Amsterdam, Amsterdam UMC, Amsterdam, The Netherlands
- 5 Queen Square Institute of Neurology and Centre for Medical Image Computing, UCL, London, UK
- 6 Department of Epidemiology & Biostatistics, Amsterdam Neuroscience, Vrije Universiteit Amsterdam, Amsterdam UMC, Amsterdam, The Netherlands

Correspondence to: Betty M. Tijms
 Alzheimer Center Amsterdam
 Amsterdam University Medical Center
 PO Box 7057
 1007 MB, Amsterdam, The Netherlands
 E-mail: b.tijms@amsterdamumc.nl

Keywords: Alzheimer's disease; clinical progression; graph theory; grey matter networks; mild cognitive impairment

Abbreviations: $A\beta$ = amyloid- β ; AD = Alzheimer's disease; ADC = Amsterdam Dementia Cohort; ADNI = Alzheimer's Disease Neuroimaging Initiative; AIC = Akaike's Information Criterion; AUC = area under the curve; CDR-SB = Clinical Dementia Rating scale—Sum of Boxes; CI = confidence interval; γ = normalized clustering coefficient; GM = grey matter; HV = hippocampal volume; λ : normalized path length; MCI = mild cognitive impairment; MMSE = Mini-Mental State Examination; OR = odds ratio; p-tau = phosphorylated-tau; σ = small-world coefficient; SPM = Statistical Parametric Mapping; TIV = total intracranial volume; tROC = time-dependent receiver operating characteristic

Graphical Abstract



Introduction

Alzheimer's disease starts with the aggregation of amyloid- β ($A\beta$) in the brain, after which it can take up to 20 years for an individual to develop dementia.^{1,2} It has been proposed that Alzheimer's disease clinical trials are most likely to be effective when individuals have biomarker evidence for the presence of $A\beta$ pathology and do not yet show large-scale irreversible neuronal damage.^{3,4} This makes $A\beta$ positive individuals with mild cognitive impairment (MCI), i.e. prodromal Alzheimer's disease, a well-suited population for disease-modifying therapies in Alzheimer's disease clinical trials. However, a challenge faced in secondary prevention trials is that individuals with prodromal Alzheimer's disease show substantial heterogeneity in clinical progression rates.⁵ This heterogeneity hampers the ability to detect treatment effects on cognitive outcomes within a typical 1–2-year clinical trial.⁶ Biomarkers are needed that can help to distinguish

individuals with prodromal Alzheimer's disease who will show rapid disease progression from those who will remain stable within a trial time frame.

Previous work has found that disrupted brain grey matter (GM) network measures, reflecting covariance patterns in GM morphology, are related to increased risk of cognitive decline and progression to Alzheimer's disease dementia.^{7–10} Across those studies, disrupted whole-brain network measures gamma (i.e. normalized values of the clustering coefficient) and small-world, i.e. indicative of an increasingly random network and reduction in small-world organization, were most robustly associated with cognitive decline, adding information to hippocampal volume (HV) and/or CSF tau measures. However, it remains unknown to what extent GM networks can be used to identify single individuals who will show fast progression.

Here we studied this question in individuals with prodromal Alzheimer's disease from two independent cohorts, i.e. we first established cut-offs in the Amsterdam Dementia Cohort (ADC)

and then tested whether these GM network cut-offs could predict if prodromal Alzheimer's disease subjects remained stable or progressed to dementia within 2 years in the Alzheimer's Disease Neuroimaging Initiative (ADNI). We then compared the performance of the GM network markers with two other biomarkers known to be associated with the decline in prodromal Alzheimer's disease [i.e. HV and CSF phosphorylated-tau (p-tau) levels],^{11,12} and determined an optimal model for detecting fast progressors. Finally, we calculated if stratification of prodromal Alzheimer's disease subjects by abnormal GM network markers would reduce sample size requirements in a hypothetical randomized control trial.

Materials and methods

Participants

We studied two cohorts: the ADC and ADNI. The ADC is a memory clinic-based cohort where participants are re-evaluated on a 6-month basis as part of regular care.¹³ The patients in the present study visited the memory clinic between November 2003 and July 2019. ADNI is an ongoing longitudinal research cohort, for which criteria are described in more detail at <http://adni.loni.usc.edu/>. It was launched in 2003 as a public-private partnership, led by Principal Investigator Michael W. Weiner, MD. The primary goal of ADNI has been to test whether serial MRI, PET, other biological markers and clinical and neuropsychological assessment can be combined to measure the progression of MCI and early Alzheimer's disease. For up-to-date information, see www.adni-info.org. The data used in the present study were collected between December 2005 and April 2016. The diagnosis was evaluated at 3–12-month intervals. For both cohorts, we selected individuals who fulfilled the consensus criteria for MCI as described by Refs.^{14,15}, had abnormal levels of CSF $A\beta_{(1-42)}$, an available baseline structural MRI scan, and at least one follow-up neuropsychological assessment. In ADNI, conversion from MCI to Alzheimer's disease is reviewed by a central review committee that applies the NINCDS-ADRDA diagnostic criteria¹⁶ for diagnosis of Alzheimer's disease dementia. In the ADC, Alzheimer's disease dementia is also defined according to the NINCDS-ADRDA diagnostic criteria¹⁶ and from 2011 on the NIA-AA criteria were applied.^{17,18} Disease-modifying trials recruiting prodromal Alzheimer's disease individuals typically have a trial duration of 24 months or less (Supplementary Table 1),¹⁹ therefore, we defined individuals as fast progressors when they progressed to dementia within 2 years. In both ADNI and ADC, all participants gave written informed consent for participation in the study and for reuse of the data. Ethical approval was given by the regional ethics committees.

MRI acquisition and preprocessing

In ADC, structural T₁-weighted images were acquired on nine different scanners, using a standardized protocol as part of

routine patient care, of which the acquisition parameters are described in detail in the [Supplementary material](#). In ADNI, T₁-weighted scans were performed on 1.5 or 3 T scanners using previously described standardized protocols,²⁰ typically a sagittal 3D MP-RAGE with a voxel size of 1.2 mm³. All images were segmented into GM, white matter and CSF using the Statistical Parametric Mapping (SPM12, <https://www.fil.ion.ucl.ac.uk/spm/software/spm12/>) running in MATLAB (v2011a). The segmented GM images were resliced to 2 × 2 × 2 mm isotropic voxels to reduce the dimensionality of the data. Total intracranial volume (TIV) was computed as the sum of GM, white matter and CSF volumes. The automated anatomical labelling atlas was used to obtain hippocampal GM volume estimates.²¹ A previously determined cut-off was applied to determine hippocampal abnormality in ADNI with a mean HV corrected for TIV of >3.68 ml.²² All GM segmentations were visually checked for quality.

Single-subject GM networks

Single-subject GM networks were constructed from the native GM images as described in the freely available MATLAB scripts: https://github.com/bettytijms/Single_Subject_Grey_Matter_Networks and in more detail in Tijms *et al.*²³ For each individual, a network was determined from the native space GM segmentations. First, nodes were defined as cubes of 3 × 3 × 3 voxels (6 mm × 6 mm × 6 mm) using an atlas-free approach. The nodes keep the 3D structure of the cortex intact, and thereby contain information on GM intensity as well as spatial information between the voxels. Next, connections were defined when nodes showed structural similarity as determined with the Pearson correlation coefficients across corresponding voxels. In order to find the maximum correlation value with a target cube across the curved cortex, each cube was rotated by an angle with multiples of 45° over all axes. The resulting similarity matrix containing all pairwise correlations was binarized using a threshold that reduced the chance of spurious correlations in the network to 5%. This corresponds to a significance level of $P < 0.05$ corrected for multiple comparisons using a permutation-based procedure.²⁴

For each individual GM network, we calculated normalized clustering coefficient (γ), normalized path length (λ) and the small-world coefficient (σ), as our previous studies showed that these measures are most robustly associated with cognitive decline.⁷⁻⁹ Briefly, γ quantifies how a network's clustering coefficient (the fraction of a node's neighbours that are also neighbours of each other) deviates from a random network. λ quantifies how a network's path length (the shortest path length between all pairs of nodes in the network) deviates from a random network. In more detail, we divided the average clustering coefficient and path length values by those values of five randomized reference networks of identical size and degree distribution.²⁵ The ratio of γ to λ , is defined as the *small-world coefficient*, indicative of the optimal balance between information segregation and integration. The network measures were computed with scripts

from the Brain Connectivity Toolbox (<https://sites.google.com/site/bctnet/>),²⁶ modified for large-scale networks.

CSF analysis

Lumbar puncture was performed as described in Mulder *et al.*²⁷ and Engelborghs *et al.*²⁸ for ADC, and for ADNI according to the ADNI procedures manual (<http://www.adni-info.org/>). CSF concentrations of $A\beta_{(1-42)}$ and tau phosphorylated threonine 181 were measured using sandwich ELISAs (Innotest, Innogenetics, Belgium), at the Neurochemistry laboratory of the Department of Clinical Chemistry of the Amsterdam University Medical Center (ADC), and for ADNI with the multiplex xMAP Luminex platform (Luminex Corp, Austin, TX, USA) and INNO-BIA AlzBio3 (Innogenetics, Ghent, Belgium) immunoassay kit-based reagents. The cut-offs for CSF $A\beta_{(1-42)}$ and p-tau abnormality have previously been determined and were 813 and 52 pg/ml for ADC,^{27,29} and 192 and 23 pg/ml for ADNI.³⁰ Because CSF p-tau was used as one of the predictors for decline, we only used an amyloid marker to define prodromal Alzheimer's disease.

Statistical analysis

Prognostic cut-offs for GM network measures (γ , λ and σ) to predict progression to dementia within 2 years were determined in the ADC cohort through time-dependent receiver operating characteristic (tROC) analysis from censored survival data using nearest neighbour estimation.³¹ The advantage of tROC analyses over standard ROC is that tROC takes the time to an event into account when calculating the sensitivity, specificity and area under the curve (AUC) for a specific marker. For each network measure, we determined the optimal cut-off value in the ADC that best separated prodromal Alzheimer's disease patients with a high or low risk for fast clinical decline at 2 years post-baseline. We then used these cut-offs in ADNI to evaluate detecting of fast progressors using logistic regression analysis, and reported accuracy, sensitivity and specificity. We further evaluated whether GM network measures provide additive information to more commonly used biomarkers for Alzheimer's disease, CSF p-tau and HV, by adding the latter markers to the logistic regression model and compared model fit using the Akaike's Information Criterion (AIC). Analyses were initially performed without covariates as such a model would be easiest to apply in practice. We repeated the analyses adding sex, age, education and MRI scanner as covariates. Next, we tested the extent to which one, two or three abnormal biomarkers (small-world, p-tau, HV) could predict who progressed to dementia within 2 years using logistic regression. Finally, sample sizes were estimated for a hypothetical 2-year randomized-controlled trial with two arms, showing an expected treatment effect of 25% reduction of decline on the Mini-Mental State Examination (MMSE)³² and the Clinical Dementia Rating scale—Sum of Boxes (CDR-SB),³³ when stratifying for GM network abnormality

using the following formula:

$$\text{Sample size / arm} = 2(z_{1-\alpha/2} + z_{1-\beta})^2 \times (\sigma_b^2 + \sigma_e^2 / \sum (t_i - t_{\text{mean}})^2) / \Delta^2$$

where α is equal to the Type I error of a two-sided significance test set at 0.05, and the power ($1 - \beta$) is 80%. From the linear mixed model, σ_b^2 and σ_e^2 are the variance in random subject slopes and the residual error variance, respectively. t_i is the measurement at time i and t_{mean} is the average follow-up time, Δ is the difference in mean rate of decline in the treatment versus control group using a 25% treatment effect. Analyses were conducted with R version 4.1.1. using the survival and survivalROC packages.³¹

Data availability

The data that support the findings of this study can be made available on request (ADC) or are publicly available (ADNI).

Results

Study population

A total of 491 prodromal Alzheimer's disease patients were available for this study (Table 1). The participants from ADNI were older and had on average more years of education compared with ADC participants. After 2 years, 60 (24.6%) subjects in ADC and 84 (34.0%) subjects in ADNI showed clinical progression to dementia.

Cut-points for GM network measures

First, we determined cut-points in ADC optimizing classification of prodromal Alzheimer's disease individuals who remained stable versus those who progressed to dementia within 2 years. Applying the tROC analysis yielded the following cut-offs: 1.627 for γ , 1.106 for λ and 1.479 for σ . These cut-offs resulted in AUCs of 0.60 for γ (sensitivity = 64%, specificity = 54%), 0.51 for λ (sensitivity = 93%, specificity = 16%) and 0.59 for σ (sensitivity = 60%, specificity = 63%; Fig. 1). This was comparable to the AUCs of 0.58 for p-tau (sensitivity = 72%, specificity = 44%) and 0.61 for HV (sensitivity = 70%, specificity = 52%).

Table 1 Subject characteristics

	ADC	ADNI
<i>n</i>	244	247
Age (y)	67.5 (7.4)	72.9 (7.0)
Sex (f)	113 (46.3%)	104 (42.1%)
Education (y)	11.7 (3.2)	15.8 (2.8)
MMSE	26.4 (2.4)	27.5 (1.8)
Progression to dementia (2 y)	60 (24.6%)	84 (34.0%)
APOEε4 carrier	157 (73.0%)	164 (66.4%)

Data are presented as mean (SD) or *n* (%); ADC, Amsterdam Dementia Cohort; ADNI, Alzheimer's Disease Neuroimaging Initiative; y, years; f, female; MMSE, Mini-Mental State Examination; APOE, Apolipoprotein E.

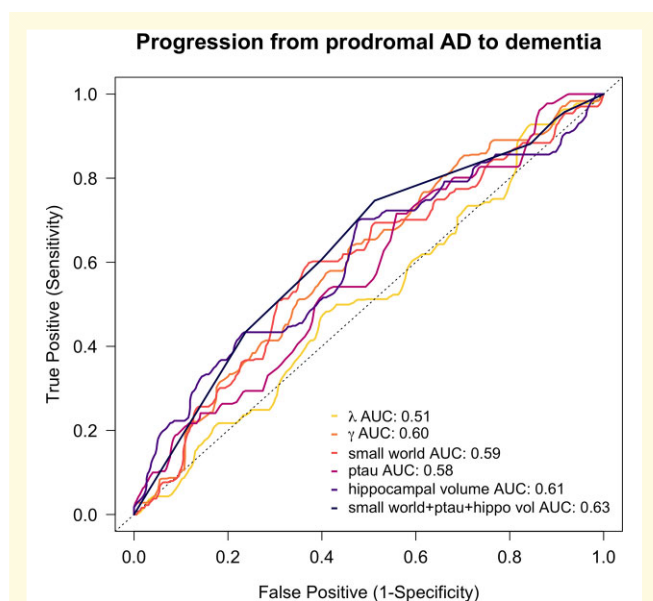


Figure 1 tROC analyses of prognostic biomarkers for predicting clinical progression within 2 years in ADC. tROC curves and corresponding areas under the curves to determine the most optimal cut-off for GM network markers together and CSF p-tau and normalized HV to assess accuracy when predicting clinical progression to dementia within 2 years post-baseline in prodromal Alzheimer's disease individuals ($n = 244$).

Predicting fast clinical progression using GM network measures

We next performed logistic regression analysis in ADNI to evaluate detection of fast progression using ADC determined cut-points. GM network measures (γ and σ) showed an accuracy of 65% (sensitivity = 33–42%, specificity = 77–82%) for predicting stable versus progressing individuals. Compared with individuals with normal γ values, those with abnormal γ values were 2.4 times [95% confidence interval (CI) = 1.4–4.3] more likely to progress to dementia within a 2-year period (Table 2 and Fig. 2). Similar odds ratios (ORs) were observed for individuals with abnormal small-world values [OR = 2.2 (95% CI = 1.2–4.1)], and abnormal HV [OR = 2.9 (95% CI = 1.6–5.2); Table 2 and Fig. 2].

Table 2 Odds ratios of abnormal biomarkers to predict clinical progression in ADNI

	OR (CI)	Se	Sp	Acc	P-value
Gamma	2.43 (1.38–4.29)	0.42	0.77	0.65	0.002*
Lambda	6.50 (2.24–18.88)	0.95	0.25	0.49	<0.001*
Small-world coefficient	2.22 (1.21–4.05)	0.33	0.82	0.65	0.010*
P-tau	3.12 (1.04–9.38)	0.95	0.13	0.41	0.043*
Hippocampal volume	2.90 (1.61–5.20)	0.40	0.81	0.67	<0.001*

ORs of logistic regression analysis for progression of prodromal Alzheimer's disease subjects to dementia within 2 years. GM network cut-offs were determined in ADC and applied to ADNI. Results are shown for every abnormal biomarker with 95% CIs. CI, confidence interval; Se, sensitivity; Sp, specificity; Acc, accuracy.

* $P < 0.05$.

Individuals with abnormal λ and CSF p-tau values showed a higher risk of progression to dementia, that is an OR of 6.5 (95% CI = 2.2–18.9) and an OR of 3.1 (95% CI = 1.0–9.4), respectively, however, this was accompanied with larger CIs and low accuracy values < 0.5 . When correcting for sex, age, education and MRI scanner, the ORs for abnormal biomarkers to predict progression increased (Supplementary Table 2). In addition, the mixed model analysis showed that individuals with abnormal GM network values showed steeper decline on the MMSE ($\beta \pm SE$, γ : -1.00 ± 0.25 ; λ : -0.78 ± 0.30 ; σ : -0.92 ± 0.26), and faster deterioration as measured by the CDR-SB ($\beta \pm SE$, γ : 0.60 ± 0.15 ; λ : 0.53 ± 0.19 ; σ : 0.62 ± 0.16), compared with individuals with normal GM network metrics (Supplementary Fig. 1).

Optimal biomarker model to identify fast progression

Next, we assessed in ADNI whether GM network measures contained information on disease progression complementary to p-tau and HV. For these analyses, we assessed the small-world coefficient only, as it can be considered a summary measure of both normalized clustering and normalized path length. A model including only p-tau resulted in an AUC of 0.54 (AIC = 316), adding HV improved the model fit (AUC = 0.64; AIC = 304, $P < 0.001$). When adding the small-world coefficient, the model did not improve significantly (AUC = 0.67; AIC = 303, $P = 0.082$) for the classification of rapid decliners (Supplementary Table 3). Note that the CSF p-tau and HV cut-offs were previously established using ADNI-specific cut-points,^{22,30} while the small-world cut-off was based on the independent ADC, which suggests that the p-tau and HV might provide over-optimistic model performance. When the small-world cut-off was also based on ADNI, the model did improve significantly (AUC = 0.70; AIC = 291, $P < 0.001$; Supplementary Table 3).

We then tested whether combining the biomarkers would improve detection of fast progressors, by labelling individuals as having no, one, two or three abnormal predictors. A gradual increase in rapid progression risk was observed with the number of abnormal biomarkers (Table 3 and Fig. 3). Showing a 6.4 times increased risk of rapid clinical decline with two abnormal prognostic biomarkers when compared with individuals with abnormal $A\beta$ only. This risk increased steeply to an OR of 10.9 for three abnormal prognostic biomarkers (Table 3 and Fig. 3). Rapid progression could be most accurately identified for individuals with all three biomarkers abnormal, with an accuracy of 72% (sensitivity = 88%, specificity = 61%).

Sample size estimates

We next studied if sample size estimates for clinical trials to detect a 25% slowing in the rate of decline on the MMSE and CDR-SB would reduce when adding network measures. Table 4 shows for the prodromal Alzheimer's disease cohort ($A\beta^+$ column) without additional markers an estimated

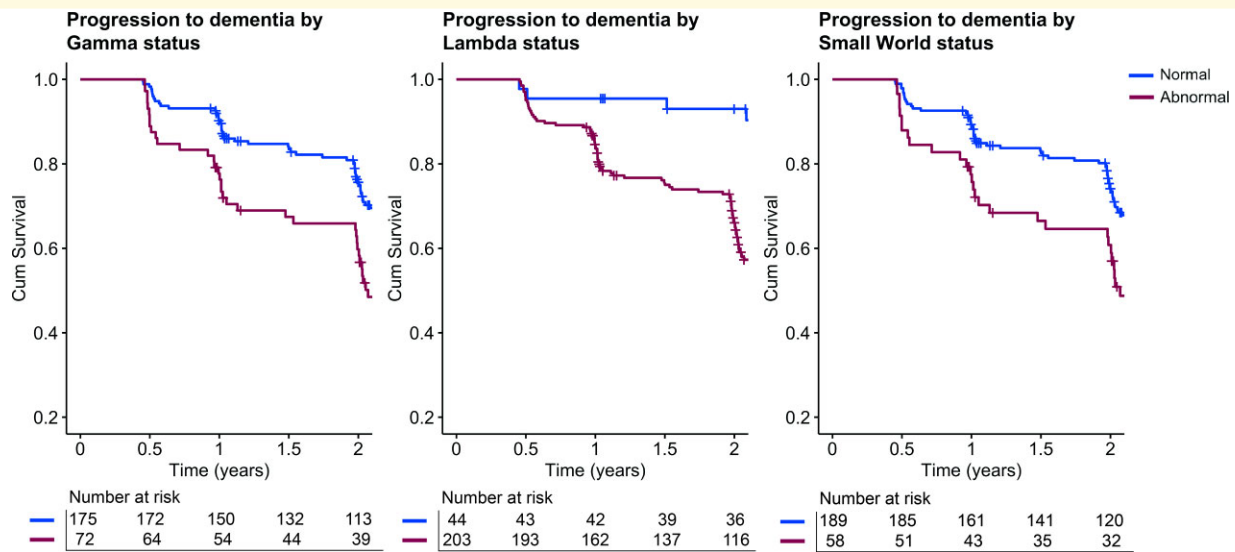


Figure 2 Kaplan–Meier curves of progression from prodromal Alzheimer’s disease to dementia within 2 years in ADNI. Lines represent individuals with normal (blue) and abnormal (red) GM network values. GM network cut-offs were determined in ADC and applied in ADNI.

sample size of 729 (95% CI=444–1364) for the MMSE, and 486 (95% CI=348–737) for the CDR-SB. Estimated sample sizes were smallest when restricting enrolment to prodromal Alzheimer’s disease participants with abnormal p-tau, abnormal HV and abnormal small-world status ($A\beta^+ \sigma^+ p\text{-tau}^+ HV^+$, Table 4).

Discussion

The main finding of the present study is that GM network measures can aid in identifying individuals with prodromal Alzheimer’s disease who are likely to progress to dementia within the next 2 years. Models combining small-world coefficient, p-tau and HV showed the best ability to detect progression. These findings could increase power in Alzheimer’s disease trials by selecting those individuals with abnormal GM network characteristics at high risk for clinical progression within a time frame of 24 months.

Most studies so far that investigated prognostic markers in individuals with MCI, studied also subjects with normal $A\beta$ values.^{5,34–40} Such an approach makes it difficult to

distinguish between the effects caused by $A\beta$, tau and neuronal injury on cognition, as abnormalities in tau and neurodegeneration are closely related to $A\beta$ pathology.^{41–43} Moreover, it can also inflate accuracy statistics, because abnormal $A\beta$ has a strong predictive effect of decline.^{44,45} Predicting progression within $A\beta$ positive individuals is, however, more difficult and the few longitudinal studies that investigated prognostic markers within prodromal Alzheimer’s disease patients have demonstrated a more

Table 3 Combining prognostic biomarkers for predicting rapid progression to dementia

	OR (CI)	Se	Sp	Acc	P-value
One abnormal biomarker	2.40 (0.52–11.07)	0.95	0.12	32%	0.262
Two abnormal biomarkers	6.40 (1.35–30.37)	0.94	0.29	55%	0.019*
Three abnormal biomarkers	10.89 (1.99–59.72)	0.88	0.61	72%	0.006*

ORs of logistic regression analysis in ADNI for the combination of abnormal biomarker predictors. Biomarker combination contains abnormal small-world coefficient, p-tau and hippocampal volume; reference category is all normal biomarkers; Se, sensitivity; Sp, specificity; Acc, accuracy.

* $P < 0.05$.

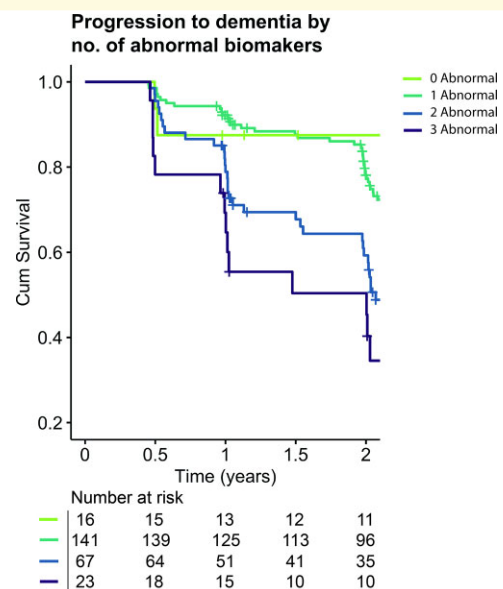


Figure 3 Kaplan–Meier curves of progression from prodromal Alzheimer’s disease to dementia within 2 years in ADNI. Separate lines represent individuals with zero, one, two or three abnormal biomarkers (GM network small-world topology, cerebrospinal fluid p-tau and hippocampal volume).

Table 4 Sample size estimates for a hypothetical 2-year trial in prodromal Alzheimer's disease subjects by biomarker abnormality

	MMSE	CDR-SB
A β ⁺	729 [444–1364]	486 [348–737]
A β ⁺ σ ⁺	493 [231–1530]	370 [214–833]
A β ⁺ p-tau ⁺	717 [430–1377]	445 [318–676]
A β ⁺ HV ⁺	385 [195–965]	310 [192–609]
A β ⁺ σ ⁺ p-tau ⁺	467 [218–1471]	347 [201–779]
A β ⁺ σ ⁺ HV ⁺	398 [151–2162]	263 [133–820]
A β ⁺ p-tau ⁺ HV ⁺	392 [194–1047]	284 [174–569]
A β ⁺ σ ⁺ p-tau ⁺ HV ⁺	358 [138–1864]	262 [131–853]

Sample size estimates and 95% CIs for a hypothetical 2-year randomized-controlled trial with two arms required to detect a 25% reduction of decline in cognitive outcome measures with a power of 80% using ADNI data. A β ⁺, MCI individuals who have abnormal CSF amyloid β_{1-42} levels; A β ⁺ σ ⁺, MCI individuals who both have abnormal A β and abnormal GM network small-worldness; A β ⁺ p-tau⁺, MCI individuals who both have abnormal A β and abnormal p-tau₁₈₁ CSF levels; A β ⁺ HV⁺, MCI individuals who both have abnormal A β and abnormal HV; etc.; MMSE, Mini-Mental State Examination; CDR-SB, Clinical Dementia Rating scale—Sum of Boxes.

modest predictive value over A β .^{12,46} This is also reflected by the relatively modest AUC values in the present study. Moreover, in contrast to previous studies showing that a more disorganized GM network is associated with cognitive decline,^{7,8,47} our findings indicate that an individual's GM network measure can be classified as normal or abnormal which is relevant for clinical application and inclusion of subjects in therapeutic trials to select those individuals who will show fast progression over a relatively short time frame.¹⁹

GM network measures start to change early in the disease process: previous studies indicate that the presence of A β significantly alters GM networks, and that these alterations may precede tau and neurodegeneration,^{48–51} and can predict future hippocampal atrophy.⁵² It could be hypothesized that the Alzheimer's disease neuropathological changes contribute to the observed brain network disruptions, and represent a close biological substrate for disease progression and cognitive decline in Alzheimer's disease. In the current study, we show that individuals with a more random network, as reflected by an abnormal small-world topology, were more than twice as likely to progress to dementia compared with those with normal values. Still, single biomarkers showed modest accuracy to predict fast progression.^{34,53} In the present study, we found that the highest predictive accuracy was obtained when the small-world coefficient was combined with both p-tau and HV. This resulted in an OR of >10 (sensitivity 88%, specificity 61%, accuracy 72%) for progression to dementia within 2 years for individuals with all three biomarkers abnormal and a 46–60% reduction in required sample size to detect at 25% treatment effect in a hypothetical 2-year trial compared with abnormal amyloid alone. This is in line with previous studies^{54–56} that showed reduced sample size estimates when tau and/or neuronal injury markers are abnormal. We show that GM network measures may further improve predictive models. Together, these studies and our results provide further support for the idea that combining multiple markers may facilitate clinical trials by increasing chances to

detect effects on clinical outcome measures. Strengths of this study include that GM network cut-offs were determined in one cohort and then showed to be generalizable to an independent cohort. Secondly, our approach allows for patient-level application. However, a follow-up study is likely needed to further investigate the prognostic value of the determined cut-offs in a larger sample. Another important next step would be to develop more user-friendly software and investigate whether GM network cut-points can be applied to challenges in a clinical setting, such as aiding in short-term care planning for dementia patients.

Conclusion

In conclusion, we showed that GM network measures can be applied to identify individuals with prodromal Alzheimer's disease at risk for fast progression. Moreover, when combined with p-tau and HV this resulted in the highest prognostic accuracy, which could contribute to detect treatment effects in Alzheimer's disease clinical trials.

Funding

Research at the Alzheimer Center Amsterdam is part of the neurodegeneration research programme of Amsterdam Neuroscience. The Alzheimer Center Amsterdam is supported by Stichting Alzheimer Nederland and Stichting VUmc Fonds. E.D. is supported by the Race Against Dementia charity (www.raceagainstdementia.com). F.B. is supported by the National Institute for Health Research Biomedical Research Centre at University College London Hospitals. Data collection and sharing for this project were funded by the ADNI (National Institutes of Health Grant U01 AG024904) and DOD ADNI (Department of Defense award number W81XWH-12-2-0012). ADNI is funded by the National Institute on Aging, the National Institute of Biomedical Imaging and Bioengineering and through generous contributions from the following: AbbVie, Alzheimer's Association; Alzheimer's Drug Discovery Foundation; Araclon Biotech; BioClinica, Inc.; Biogen; Bristol-Myers Squibb Company; CereSpir, Inc.; Cogstate; Eisai Inc.; Elan Pharmaceuticals, Inc.; Eli Lilly and Company; EuroImmun; F. Hoffmann-La Roche Ltd and its affiliated company Genentech, Inc.; Fujirebio; GE Healthcare; IXICO Ltd; Janssen Alzheimer Immunotherapy Research & Development, LLC.; Johnson & Johnson Pharmaceutical Research & Development LLC; Lumosity; Lundbeck; Merck & Co., Inc.; Meso Scale Diagnostics, LLC; NeuroRx Research; Neurotrack Technologies; Novartis Pharmaceuticals Corporation; Pfizer Inc.; Piramal Imaging; Servier; Takeda Pharmaceutical Company; and Transition Therapeutics. The Canadian Institutes of Health Research is providing funds to support ADNI clinical sites in Canada. Private sector contributions are facilitated by the Foundation for the National Institutes of Health

(www.fnih.org). The grantee organization is the Northern California Institute for Research and Education, and the study is coordinated by the Alzheimer's Therapeutic Research Institute at the University of Southern California. ADNI data are disseminated by the Laboratory for Neuro Imaging at the University of Southern California.

Competing interests

W.P., E.M.V. and E.D. report no competing interests. P.S. reports research support from Alzheimer Nederland, Dioraphte, Stichting VUmc Fonds and Stichting Alzheimer & Neuropsychiatrie; is a consultant for EIP Pharma, Vivoryon, Toyama Fuji Film, AC Immune, Axon Neuroscience, GemVax, Medavante, Novartis Cardiology and Green Valley; is co-editor-in-chief of Alzheimer's Research & Therapy and is a part-time managing partner of the Life Science Partners Dementia Fund. C.E.T. reports research support from European Commission (Marie Curie International Training Network, JPND), Health Holland, the Netherlands Organisation for Health Research and Development (ZonMw), The Weston Brain Institute and Alzheimer Nederland; and has the following industrial collaborations: collaboration contract with ADx Neurosciences, contract research or received grants from Probiobrug, AC Immune, Biogen-Esai, CogRx, Toyama, Janssen Prevention Center, Boehringer, AxonNeurosciences, Fujirebio, EIP farma, PeopleBio and Roche, and is on the advisory board of Roche. F.B. received payment and honoraria from Bayer Genzyme, Biogen-Idec, TEVA, Merck, Novartis, Roche, IXICO Ltd, GeNeuro and Apitope Ltd for consulting; payment from the IXICOLtd and MedScape for educational presentations; research support via grants from European Federation of Pharmaceutical Industries and Associations (EFPIA) Innovative Medicines Initiative Joint Undertaking (AMYPAD consortium), European Progression Of Neurological Diseases (EuroPOND H2020), UK MS Society, Dutch MS Society, PICTURE Innovative Medical Devices Initiative-Dutch Research Council (IMDI-NWO), National Institute for Health Research at University College London Hospitals Biomedical Research Centre and The European Committee for Treatment and Research in Multiple Sclerosis-Magnetic Resonance Imaging in MS (ECTRIMS-MAGNIMS). W.M.v.d.F. reports research support from Netherlands Organisation for Health Research and Development (ZonMw), Dutch Research Council (NWO), EU Seventh framework programme (FP7), EU Joint Programme Neurodegenerative Disease Research (JPND), Alzheimer Nederland, CardioVascular Onderzoek Nederland, Health Holland, Topsector Life Sciences & Health, Stichting Dioraphte, Gieskes-Strijbis Fonds, Stichting Equilibrio, Pasmaan Stichting, Fujifilm, Boehringer Ingelheim, Life-MI, AVID, Janssen Stellar, Combinostics. W.M.v.d.F. is the chair of Pasmaan Stichting. W.M.v.d.F. has performed contract research for Biogen and received speaker fees from Biogen and Roche. B.M.T. received grant

support from ZonMw Memorabel (grant number 73305056).

Supplementary material

Supplementary material is available at *Brain Communications* online.

References

- Scheltens P, de Strooper B, Kivipelto M, et al. Alzheimer's disease. *Lancet*. 2021;397(10284):1577–1590.
- Jack CR, Bennett DA, Blennow K, et al. NIA-AA Research Framework: Toward a biological definition of Alzheimer's disease. *Alzheimers Dement*. 2018;14(4):535–562.
- Selkoe DJ. Resolving controversies on the path to Alzheimer's therapeutics. *Nat Med*. 2011;17(9):1060–1065.
- Cummings J, Feldman HH, Scheltens P. The 'rights' of precision drug development for Alzheimer's disease. *Alzheimers Res Ther*. 2019;11(1):76.
- Vos SJB, Verhey F, Frölich L, et al. Prevalence and prognosis of Alzheimer's disease at the mild cognitive impairment stage. *Brain*. 2015;138(5):1327–1338.
- Jutten RJ, Sikkes SAM, van der Flier WM, Scheltens P, Visser PJ, Tijms BM. Finding treatment effects in Alzheimer trials in the face of disease progression heterogeneity. *Neurology*. 2021;96(22):e2673–e2684.
- Tijms BM, ten Kate M, Gouw AA, et al. Gray matter networks and clinical progression in subjects with predementia Alzheimer's disease. *Neurobiol Aging*. 2018;61:75–81.
- Dicks E, Tijms BM, ten Kate M, et al. Gray matter network measures are associated with cognitive decline in mild cognitive impairment. *Neurobiol Aging*. 2018;61:198–206.
- Verfaillie SCJ, Slot RER, Dicks E, et al. A more randomly organized grey matter network is associated with deteriorating language and global cognition in individuals with subjective cognitive decline. *Hum Brain Mapp*. 2018;39(8):3143–3151.
- Pereira JB, Mijalkov M, Kakaie E, et al. Disrupted network topology in patients with stable and progressive mild cognitive impairment and Alzheimer's disease. *Cereb Cortex*. 2016;26(8):3476–3493.
- van Rossum IA, Visser PJ, Knol DL, et al. Injury markers but not amyloid markers are associated with rapid progression from mild cognitive impairment to dementia in Alzheimer's disease. *J Alzheimers Dis*. 2012;29(2):319–327.
- van Rossum IA, Vos SJB, Burns L, et al. Injury markers predict time to dementia in subjects with MCI and amyloid pathology. *Neurology*. 2012;79(17):1809–1816.
- van der Flier WM, Scheltens P. Amsterdam dementia cohort: Performing research to optimize care. *J Alzheimers Dis*. 2018;62(3):1091–1111.
- Albert MS, DeKosky ST, Dickson D, et al. The diagnosis of mild cognitive impairment due to Alzheimer's disease: Recommendations from the National Institute on Aging-Alzheimer's Association workgroups on diagnostic guidelines for Alzheimer's disease. *Alzheimers Dement* 2011;7(3):270–279.
- Petersen RC, Smith GE, Waring SC, Ivnik RJ, Tangalos EG, Kokmen E. Mild cognitive impairment: Clinical characterization and outcome. *Arch Neurol*. 1999;56(3):303–308.
- McKhann G, Drachman D, Folstein M, Katzman R, Price D, Stadlan EM. Clinical diagnosis of Alzheimer's disease: Report of the NINCDS-ADRDA Work Group* under the auspices of Department of Health and Human Services Task Force on Alzheimer's Disease. *Neurology*. 1984;34(7):939–939.

17. McKhann GM, Knopman DS, Chertkow H, *et al.* The diagnosis of dementia due to Alzheimer's disease: Recommendations from the National Institute on Aging-Alzheimer's Association workgroups on diagnostic guidelines for Alzheimer's disease. *Alzheimers Dement.* 2011;7(3):263–269.
18. van der Flier WM, Pijnenburg YAL, Prins N, *et al.* Optimizing patient care and research: The Amsterdam dementia cohort. *J Alzheimers Dis.* 2014;41(1):313–327.
19. Cummings J, Lee G, Zhong K, Fonseca J, Taghva K. Alzheimer's disease drug development pipeline: 2021. *Alzheimers Dement.* 2021;7(1):e12179.
20. Jack CR, Bernstein MA, Fox NC, *et al.* The Alzheimer's disease neuroimaging initiative (ADNI): MRI methods. *J Magn Reson Imaging.* 2008;27(4):685–691.
21. Tzourio-Mazoyer N, Landeau B, Papathanassiou D, *et al.* Automated anatomical labeling of activations in SPM using a macroscopic anatomical parcellation of the MNI MRI single-subject brain. *NeuroImage.* 2002;15(1):273–289.
22. Wisse LEM, Butala N, Das SR, *et al.* Suspected non-AD pathology in mild cognitive impairment. *Neurobiol Aging.* 2015;36(12):3152–3162.
23. Tijms BM, Seris P, Willshaw DJ, Lawrie SM. Similarity-based extraction of individual networks from gray matter MRI scans. *Cereb Cortex.* 2012;22(7):1530–1541.
24. Noble WS. How does multiple testing correction work? *Nat Biotechnol.* 2009;27(12):1135–1137.
25. Maslov S, Sneppen K. Specificity and stability in topology of protein networks. *Science.* 2002;296(5569):910–913.
26. Bullmore E, Sporns O. Complex brain networks : Graph theoretical analysis of structural and functional systems. *Nat Rev Neurosci.* 2009;10(3):186–198.
27. Mulder C, Verwey NA, van der Flier WM, *et al.* Amyloid- β (1–42), total tau, and phosphorylated tau as cerebrospinal fluid biomarkers for the diagnosis of Alzheimer disease. *Clin Chem.* 2010;56(2):248–253.
28. Engelborghs S, Niemantsverdriet E, Struyfs H, *et al.* Consensus guidelines for lumbar puncture in patients with neurological diseases. *Alzheimers Dement.* 2017;8(1):111–126.
29. Tijms BM, Willemse EAJ, Zwan MD, *et al.* Unbiased approach to counteract upward drift in cerebrospinal fluid amyloid- β 1–42 analysis results. *Clin Chem.* 2018;64(3):576–585.
30. Shaw LM, Vanderstichele H, Knapik-Czajka M, *et al.* Cerebrospinal fluid biomarker signature in Alzheimer's disease neuroimaging initiative subjects. *Ann Neurol.* 2009;65(4):403–413.
31. Heagerty PJ, Lumley T, Pepe MS. Time-dependent ROC curves for censored survival data and a diagnostic marker. *Biometrics.* 2000;56(2):337–344.
32. Folstein MF, Robins LN, Helzer JE. The mini-mental state examination. *Arch Gen Psychiatry.* 1983;40(7):812.
33. Williams MM, Storandt M, Roe CM, Morris JC. Progression of Alzheimer's disease as measured by Clinical Dementia Rating Sum of Boxes scores. *Alzheimers Dement.* 2013;9(1S):S39–S44.
34. Blennow K, Shaw LM, Stomrud E, *et al.* Predicting clinical decline and conversion to Alzheimer's disease or dementia using novel Elecsys A β (1–42), pTau and tTau CSF immunoassays. *Sci. Rep.* 2019;9(1):19024.
35. van Maurik IS, Vos SJ, Bos I, *et al.* Biomarker-based prognosis for people with mild cognitive impairment (ABIDE): A modelling study. *Lancet Neurol.* 2019;18(11):1034–1044.
36. Ben Bouallègue F, Mariano-Goulart D, Payoux P. Comparison of CSF markers and semi-quantitative amyloid PET in Alzheimer's disease diagnosis and in cognitive impairment prognosis using the ADNI-2 database. *Alzheimers Res Ther.* 2017;9(1):32.
37. Hansson O, Seibyl J, Stomrud E, *et al.* CSF biomarkers of Alzheimer's disease concord with amyloid- β PET and predict clinical progression: A study of fully automated immunoassays in BioFINDER and ADNI cohorts. *Alzheimers Dement.* 2018;14(11):1470–1481.
38. Palmqvist S, Tideman P, Cullen N, *et al.* Prediction of future Alzheimer's disease dementia using plasma phospho-tau combined with other accessible measures. *Nat Med.* 2021;27(6):1034–1042.
39. Cullen NC, Leuzy A, Palmqvist S, *et al.* Individualized prognosis of cognitive decline and dementia in mild cognitive impairment based on plasma biomarker combinations. *Nat Aging.* 2021;1(1):114–123.
40. Cicognola C, Janelidze S, Hertze J, *et al.* Plasma glial fibrillary acidic protein detects Alzheimer pathology and predicts future conversion to Alzheimer dementia in patients with mild cognitive impairment. *Alzheimers Res Ther.* 2021;13(1):68.
41. Barthélemy NR, Li Y, Joseph-Mathurin N, *et al.* A soluble phosphorylated tau signature links tau, amyloid and the evolution of stages of dominantly inherited Alzheimer's disease. *Nat Med.* 2020;26(3):398–407.
42. Milà-Alomà M, Salvadó G, Gispert JD, *et al.* Amyloid beta, tau, synaptic, neurodegeneration, and glial biomarkers in the preclinical stage of the Alzheimer's continuum. *Alzheimers Dement.* 2020;16(10):1358–1371.
43. Sato C, Barthélemy NR, Mawuenyega KG, *et al.* Tau kinetics in neurons and the human central nervous system. *Neuron.* 2018;97(6):1284–1298.e7.
44. Vos SJ, Xiong C, Visser PJ, *et al.* Preclinical Alzheimer's disease and its outcome: A longitudinal cohort study. *Lancet Neurol.* 2013;12(10):957–965.
45. Lim YY, Maruff P, Pietrzak RH, *et al.* A β and cognitive change: Examining the preclinical and prodromal stages of Alzheimer's disease. *Alzheimers Dement.* 2014;10(6):743–751.e1.
46. Jang H, Park J, Woo S, *et al.* Prediction of fast decline in amyloid positive mild cognitive impairment patients using multimodal biomarkers. *Neuroimage Clin.* 2019;24:101941.
47. Pelkmans W, Ossenkoppele R, Dicks E, *et al.* Tau-related grey matter network breakdown across the Alzheimer's disease continuum. *Alzheimers Res Ther.* 2021;13(1):138.
48. Tijms BM, Kate Mt, Wink AM, *et al.* Gray matter network disruptions and amyloid beta in cognitively normal adults. *Neurobiol Aging.* 2016;37:154–160.
49. ten Kate M, Visser PJ, Bakardjian H, *et al.* Gray matter network disruptions and regional amyloid beta in cognitively normal adults. *Front Aging Neurosci.* 2018;10:67.
50. Voevodskaya O, Pereira JB, Volpe G, *et al.* Altered structural network organization in cognitively normal individuals with amyloid pathology. *Neurobiol Aging.* 2018;64:15–24.
51. Oh H, Mormino EC, Madison C, Hayenga A, Smiljic A, Jagust WJ. β -Amyloid affects frontal and posterior brain networks in normal aging. *NeuroImage.* 2011;54(3):1887–1895.
52. Dicks E, van der Flier WM, Scheltens P, Barkhof F, Tijms BM. Single-subject gray matter networks predict future cortical atrophy in preclinical Alzheimer's disease. *Neurobiol Aging.* 2020;94:71–80.
53. Pascoal TA, Mathotaarachchi S, Shin M, *et al.* Synergistic interaction between amyloid and tau predicts the progression to dementia. *Alzheimers Dement.* 2017;13(6):644–653.
54. Bertens D, Tijms BM, Vermunt L, Prins ND, Scheltens P, Visser PJ. The effect of diagnostic criteria on outcome measures in preclinical and prodromal Alzheimer's disease: Implications for trial design. *Alzheimers Dement.* 2017;3(4):513–523.
55. van Rossum IA, Vos S, Handels R, Visser PJ. Biomarkers as predictors for conversion from mild cognitive impairment to Alzheimer-type dementia: Implications for trial design. *J Alzheimers Dis.* 2010;20(3):881–891.
56. Lorenzi M, Donohue M, Paternicò D, *et al.* Enrichment through biomarkers in clinical trials of Alzheimer's drugs in patients with mild cognitive impairment. *Neurobiol Aging.* 2010;31(8):1443–1451.e1.