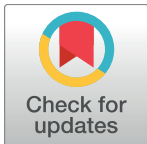


CORRECTION

Correction: Evaluating the impact of fast-fMRI on dynamic functional connectivity in an event-based paradigm

Ashish Kaul Sahib, Michael Erb, Justus Marquetand, Pascal Martin, Adham Elshahabi, Silke Klamer, Serge Vulliemoz, Klaus Scheffler, Thomas Ethofer, Niels K. Focke

There are errors in the graphs for the 18.4 s window in [Fig 2](#). Please see the correct [Fig 2](#) here.



OPEN ACCESS

Citation: Sahib AK, Erb M, Marquetand J, Martin P, Elshahabi A, Klamer S, et al. (2018) Correction: Evaluating the impact of fast-fMRI on dynamic functional connectivity in an event-based paradigm. PLoS ONE 13(4): e0195916. <https://doi.org/10.1371/journal.pone.0195916>

Published: April 11, 2018

Copyright: © 2018 Sahib et al. This is an open access article distributed under the terms of the [Creative Commons Attribution License](#), which permits unrestricted use, distribution, and reproduction in any medium, provided the original author and source are credited.

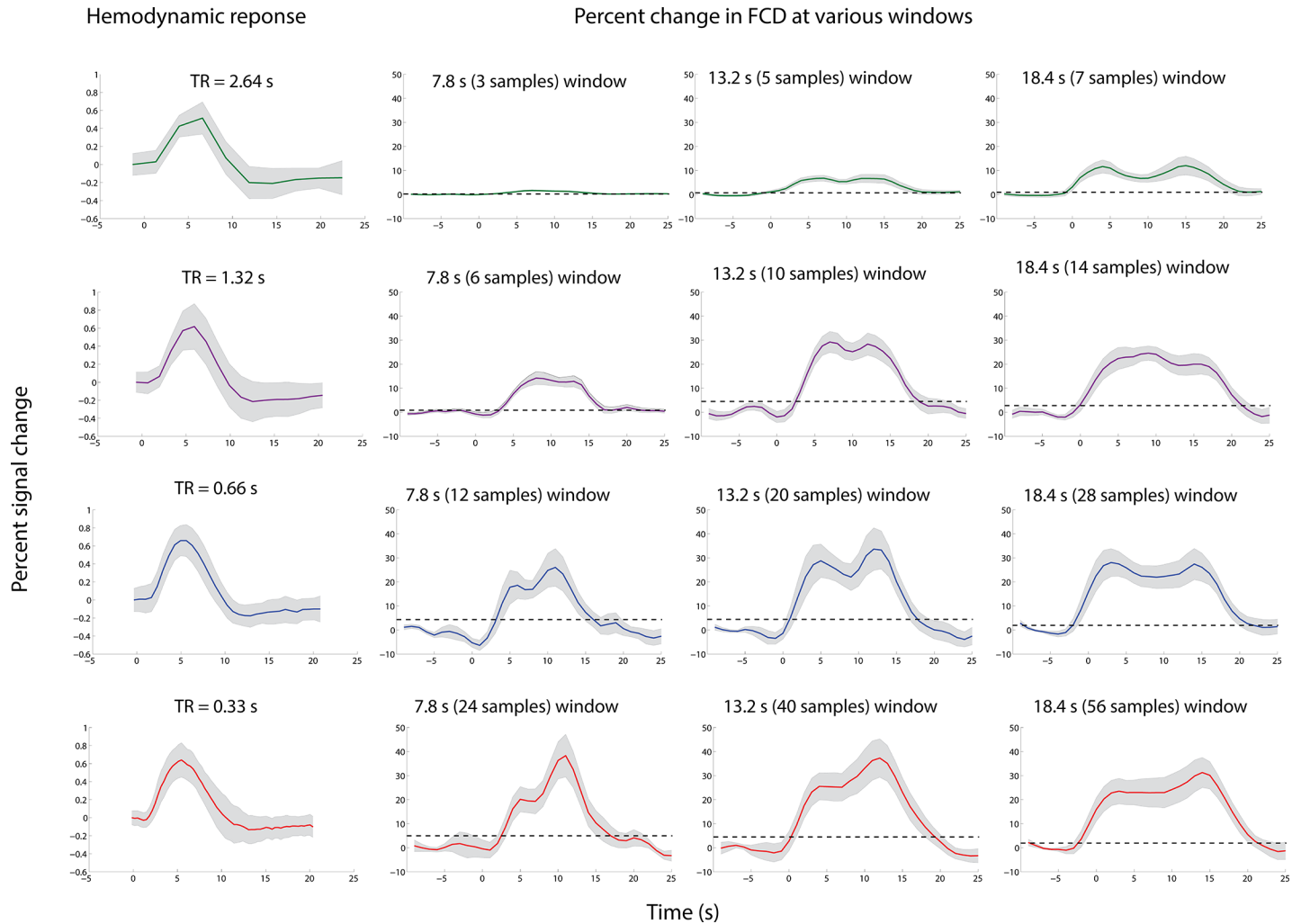


Fig 2. Comparison between the FCD percent change and the hemodynamic response. Percent change in FCD with stimulation beginning at 0 s for TR of 2.64 s (in green), 1.32 s (in purple), 0.66 s (in blue) and 0.33 s (in red) at various window sizes, along with the hemodynamic response. All these measures were computed in the region defined by the localizer. The 0 s indicates the stimulus onset. The horizontal dash line is a marker for significance (twice the mean standard error of the baseline).

<https://doi.org/10.1371/journal.pone.0195916.g001>

Reference

1. Sahib AK, Erb M, Marquetand J, Martin P, Elshahabi A, Klamer S, et al. (2018) Evaluating the impact of fast-fMRI on dynamic functional connectivity in an event-based paradigm. PLoS ONE 13(1): e0190480. <https://doi.org/10.1371/journal.pone.0190480> PMID: 29357371