

## Case Report

# Primary Gallbladder Small Lymphocytic Lymphoma as a Rare Postcholecystectomy Finding

**Kyriakos Psarras,<sup>1</sup> Nikolaos Symeonidis,<sup>1</sup> Euthymia Vlachaki,<sup>2</sup> Minas Baltatzis,<sup>1</sup> Georgios Papatolios,<sup>1</sup> Efstathios Pavlidis,<sup>1</sup> Christina Mouratidou,<sup>1</sup> Ioannis Venizelos,<sup>3</sup> Theodoros Pavlidis,<sup>1</sup> Athanasios Sakantamis,<sup>1</sup> and Christina Nikolaidou<sup>3</sup>**

<sup>1</sup>2nd Department of Propedeutical Surgery, School of Health Sciences, Aristotle University of Thessaloniki, Hippokratia General Hospital, 49 Konstantinoupoleos Street, 54642 Thessaloniki, Greece

<sup>2</sup>2nd Department of Internal Medicine, School of Health Sciences, Aristotle University of Thessaloniki, Hippokratia General Hospital, 49 Konstantinoupoleos Street, 54642 Thessaloniki, Greece

<sup>3</sup>Department of Pathology, Hippokratia General Hospital, 49 Konstantinoupoleos Street, 54642 Thessaloniki, Greece

Correspondence should be addressed to Nikolaos Symeonidis; [niksym@gmail.com](mailto:niksym@gmail.com)

Received 11 April 2014; Revised 27 April 2014; Accepted 28 April 2014; Published 6 May 2014

Academic Editor: Massimo Gentile

Copyright © 2014 Kyriakos Psarras et al. This is an open access article distributed under the Creative Commons Attribution License, which permits unrestricted use, distribution, and reproduction in any medium, provided the original work is properly cited.

**Introduction.** Primary lymphoma of the gallbladder is an extremely rare entity with approximately 50 cases reported so far. In many of these cases the presenting symptoms were mimicking symptomatic gallstone disease and the diagnosis was made postoperatively, especially when the preoperative imaging results were far from suspicious for malignant disease. **Patients and Methods.** We report a case of primary lymphoma of the gallbladder in an 85-year-old man with gallstone disease, who was admitted for elective cholecystectomy 2 months after an episode of acute cholecystitis and pancreatitis. Histological evaluation of the specimen revealed a small lymphocytic lymphoma of the gallbladder. This type of primary gallbladder lymphoma has not been previously reported. **Discussion.** The most common primary lymphomas of the gallbladder are MALT lymphomas and diffuse large B-cell lymphomas, although a variety of other histological types have been reported. The association of these lesions with chronic inflammation is the most convincing theory for their pathogenesis. For lesions confined to the gallbladder, cholecystectomy is considered to be sufficient, while supplementary chemotherapy significantly improves prognosis in more advanced disease.

## 1. Introduction

Extranodal non-Hodgkin lymphomas represent 40% of all malignant lymphomas, the majority of which involve B-cell clones and originate from the gastrointestinal tract (4%–20% of all non-Hodgkin lymphomas arise in this site) [1]. The stomach is more often involved, followed by the small intestine, colon, and esophagus. Primary lymphoma of the gallbladder without regional spread of the disease and without other organ involvement is extremely rare; to the best of our knowledge about 50 cases have been reported in the English literature so far [2]. Secondary infiltration of the gallbladder in patients with widespread lymphoproliferative disease is a slightly more common entity, although rare as well.

The mean age of presentation depends on the specific histological type ranging between 35 and 69 years old [2]. There are only two cases reported in 4- and 5-year-old children, the former being a lymphoblastic lymphoma of the pre-B type and the latter a T-cell non-Hodgkin lymphoma [2, 3]. A marginal female predominance has been observed [2].

Symptoms of acute cholecystitis represent the most common clinical appearance of the disease masquerading the diagnosis of lymphoma, especially if a mass in the gallbladder wall is not detected preoperatively. However, even in the case of a mass, the distinction between gallbladder adenocarcinoma and lymphoma is hardly achieved without histological confirmation.

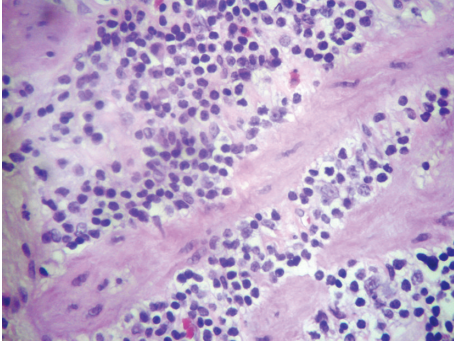


FIGURE 1: Hematoxylin-eosin stain (×400) showing small lymphocytes with round nuclei, small nucleoli, and scant cytoplasm.

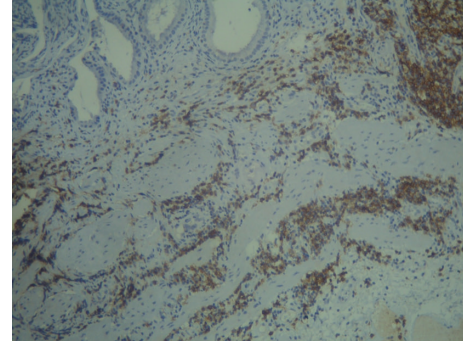


FIGURE 2: Immunohistochemistry (×200) showing CD23 positive cells infiltrating the gallbladder wall.

Primary lymphomas of the extrahepatic biliary tract are even more rare presenting at younger age and most of the times are symptomatic due to bile duct obstruction [2].

## 2. Case Report

An 85-year-old man was admitted to the surgical department for elective laparoscopic cholecystectomy due to symptomatic gallstone disease. Medical history reported arterial hypertension and type II diabetes mellitus. The patient had been hospitalized in emergency 2 months before, because of severe epigastric and right upper quadrant pain radiating to the back with retching and vomitus. Laboratory findings consisted of a moderate leukocytosis ( $12.500/\mu\text{L}$ , 78% granulocytes) and elevated serum and urine amylase. Abdominal ultrasound and MRI/MRCP revealed an edematous appearance of the pancreas, mild distention, and thickening of the gallbladder wall and an amount of bile-sludge inside the lumen which was mobile upon patient's movements. No accompanying lymphadenopathy was detected. The patient was managed conservatively and an elective late cholecystectomy was scheduled.

Two months later, the patient underwent laparoscopic cholecystectomy without intraoperative or postoperative complications. The gallbladder contained inspissated bile; the wall seemed normal on macroscopic inspection and palpation. The pathology report described a gallbladder measuring  $7 \times 5$  cm. Microscopically, the surface epithelium was normal. In the lamina propria there was diffuse infiltration with small lymphoid cells, which had slightly irregular or round nuclei and small nucleoli. The cytoplasm was scant. There was no mitotic activity. Mild inflammatory infiltration with other lymphocytes, plasma cells, and eosinophils was also found. Immunohistochemistry revealed that the small lymphoid cells were positive for CD20, CD79a, CD5, and CD23 and negative for CD10, CD3, and Cyclin D1. Therefore, the diagnosis of small lymphocytic lymphoma (SLL) of the gallbladder was established (Figures 1, 2, 3, and 4). The patient was readmitted in the department of hematology and additional investigations were performed. CT of the neck, thorax, and abdomen, upper and lower gastrointestinal tract endoscopies, and bone marrow biopsy were all negative,

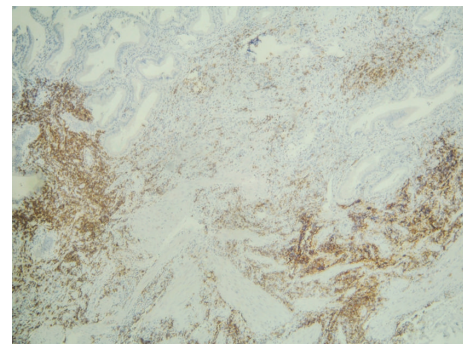


FIGURE 3: Immunohistochemistry (×40) showing CD5 positive small lymphocytic gallbladder infiltration.

including a negative biopsy for *H. Pylori*. Bone marrow morphology, immunohistochemistry, and immunophenotyping by flow cytometry did not reveal any infiltration by B-monoclonal cells. Peripheral blood smears showed a granulocytic prevalence of 66% (WBC:  $5880/\mu\text{L}$ ). Additionally, B-monoclonal cells in the peripheral blood were measured lower than  $5 \times 10^9/\text{L}$ , being CD20 and CD19 positive and CD5 negative in the immunophenotyping analysis, which excluded the diagnosis of chronic lymphocytic leukemia (CLL) according to the updated WHO definition [4, 5]. It was decided that no additional treatment was necessary and the patient is under regular followup. One year after the diagnosis there are no clinical or radiological signs of recurrence.

## 3. Discussion

Primary malignant lymphoma of the gallbladder is extremely rare. Among malignant tumors of the gallbladder 98% are adenocarcinomas, while only 0.1-0.2% represents lymphomas [1]. Low-grade MALT lymphomas and high-grade diffuse large B-cell lymphomas (DLBCL) are the commonest histological types encountered in the gallbladder lymphoma [2, 6]. MALT lymphomas are usually CD5(-) and are characterized by the triad of (a) centrocyte-like cells, (b) small lymphoid cells, and (c) plasma cells, as described by Isaacson in 1987 [6, 7]. Extranodal marginal zone lymphomas (EMZL) are the most frequently reported MALT lymphomas. Both DLBCLs

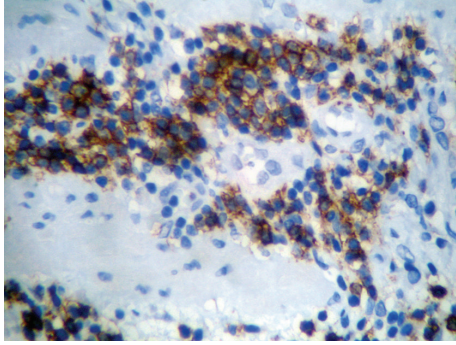


FIGURE 4: Immunohistochemistry ( $\times 400$ ) showing CD20 positive small lymphocytes.

and EMZLs usually develop in the elderly ( $>70$  years) and frequently coexist with gallstone disease [2]. Other rare histological types are the follicular lymphomas, the mantle cell lymphomas, the primary effusion lymphomas (PEL), the plasmablastic lymphomas (PBL) which are considered as HIV-associated lesions, the B-lymphoblastic lymphomas, the angiotropic or intravascular lymphomas, some poorly differentiated lymphocytic lymphomas, and the classical Hodgkin lymphomas [2].

SLL is defined by WHO (2008) as a low-grade neoplasm with the tissue morphology and immunophenotype of CLL, but with absence of leukemia [8]. It accounts for about 4-5% of non-Hodgkin's lymphomas and the median age of presentation is 60 years. Histologically they appear as small round lymphocytes interspersing with larger cells with prominent nuclei [9]. SLL is an indolent disease with a very good prognosis and therefore it is frequently indistinguishable from the benign monoclonal B-cell lymphocytosis, which needs no treatment. Research for specific histological criteria in order to make a distinction between these 2 entities is currently in progress [8]. Only 3 cases with CLL involving the gallbladder have been reported [10–12]. Recently, Imenpour et al. reported a case of SLL/CLL of the gallbladder accompanied with abdominal, thoracic, and axillary lymph node involvement [13]. No other case of primary gallbladder SLL has been reported so far after a thorough investigation of the literature.

The pathogenesis of SLL in the gallbladder is obscure. Taking into account our patient's history of cholecystitis we can speculate that it may be comparable with the pathogenesis of MALT lymphomas, which arise in lymphoid tissue in response to either infectious conditions or autoimmune diseases [14, 15]. Specifically in the gallbladder, chronic inflammation possibly provides a good substrate for primary lymphomas [16]. Tomori et al. reported that lymphoid follicles are normally present in the gallbladder wall and also that lymphoid proliferation and MALT lymphomas are associated with positive bile cultures and gallstones [17]. Bisig et al. postulated that mechanical irritation rather than infectious conditions is responsible for MALT gallbladder lymphomas, based on the fact that infected bile was rarely detected in reported cases [18]. Nevertheless, regardless of the specific mechanism that causes inflammation, cholecystitis induces lymphocyte migration to the gallbladder mucosa, resulting

in the formation of secondary follicles. Continuous antigenic stimuli may cause chromosomal translocations leading to a fusion protein, which inhibits apoptosis and results in antigen-independent proliferation [19]. Bisig et al. detected a specific translocation  $t(11;18)(q21;q21)$  in an EZML type of primary gallbladder lymphoma, leading to the fusion of the apoptosis inhibitor-2 (API2) gene with the MALT lymphoma-associated translocation (MALT1) gene [18].

Clinically, gallbladder lymphomas may mimic acute or chronic cholecystitis with or without cholelithiasis. Mani et al. reported a series of 14 patients with primary gallbladder lymphoma, 10 of which presented with symptoms of cholecystitis [2]. Two patients from the same series had a palpable gallbladder mass, while cholelithiasis was detected in 4 cases. The majority of other isolated cases do not demonstrate an exception to this rule; therefore, no characteristic clinical features have been described. SLL/CLLs of the gallbladder may also present with acute cholecystitis as in our case [12].

Radiological features of gallbladder lymphomas are highly associated with the histological type. On CT, high-grade lymphomas, such as DLBCL, demonstrate a tendency to form a solid mass or an irregular thickening in the gallbladder wall, whereas low grade lymphomas (MALT, follicular, or SLL) may present as a slight thickening of the wall. Furthermore, in early stages of the disease, the lesion is confined to the submucosal layer leaving the mucosa intact. This finding is of great importance regarding the differential diagnosis from gallbladder adenocarcinoma [1, 20, 21]. On MRI, gallbladder lymphoma lesions show low signal intensity on fat-suppressed  $T_1$ -weighted sequences and high signal intensity on fat-suppressed  $T_2$ -weighted sequences compared with those of liver parenchyma. On the latter sequences the signal of the wall is homogenous and slightly hypointense compared with gallbladder carcinoma [22]. It is worth mentioning that in our case the lesion was not detected in any imaging studies.

Trying to estimate the necessity or routine gallbladder histopathology, Huang et al. reported a series of 1452 cholecystectomies that included only 6 carcinomas and 1 lymphoma discovered upon pathological evaluation [23]. Based on the overall low incidence of the gallbladder malignancy and also on the fact that in all malignant cases of his series the lesions were suspected pre- or intraoperatively, he proposed that a selective rather than a routine histological examination would result in reduced demands in the histopathology department without compromising patients' safety. However, the presence of some incidental cases, without any clinical or radiological suspicion as in our case, proves that several cases could be misdiagnosed if routine examination was not accomplished. Cost-effective practice frequently gives rise to ethical concerns and induces a great amount of controversy, especially when human life is the matter.

In case of incidental diagnosis of primary gallbladder lymphoma all patients should undergo a complete staging workup in order to determine the extent of the disease, as well as a follow-up surveillance. If the lesion is localized in the gallbladder (as in our case) cholecystectomy is considered to be sufficient. Otherwise, patients should undergo neoadjuvant therapy and in case of SLL/CLL the

combination of oral fludarabine and rituximab has been recently proposed as an effective initial treatment, which prolongs progression free interval and overall survival [24]. Chlorambucil, cyclophosphamide, and steroids have also been used with satisfactory response rates. Radiation therapy has also been proved valuable. The prognosis of SLL is very good (mean survival 75 months after diagnosis [25]) and the majority of patients' deaths are attributed to other causes.

## Conflict of Interests

The authors declare that there is no conflict of interests regarding the publication of this paper.

## References

- [1] A. Ono, S. Tanoue, Y. Yamada et al., "Primary malignant lymphoma of the gallbladder: a case report and literature review," *British Journal of Radiology*, vol. 82, no. 973, pp. e15–e19, 2009.
- [2] H. Mani, F. Climent, L. Colomo, S. Pittaluga, M. Raffeld, and E. S. Jaffe, "Gall bladder and extrahepatic bile duct lymphomas: clinicopathological observations and biological implications," *American Journal of Surgical Pathology*, vol. 34, no. 9, pp. 1277–1286, 2010.
- [3] J. Gravel, M. Lallier, L. Garel, P. Brochu, J. Champagne, and F. Alvarez, "Primary non-hodgkin lymphoma of the extrahepatic biliary tract and gallbladder in a child," *Journal of Pediatric Gastroenterology and Nutrition*, vol. 32, no. 5, pp. 598–601, 2001.
- [4] H. K. Muller-Hermelink, E. Montserrat, D. Catovsky et al., "Chronic lymphocytic leukemia/small lymphocytic lymphoma," in *WHO Classification of Tumors of Haematopoietic and Lymphoid Tissues*, S. H. Swedlow, E. Campo, N. L. Harris, E. Jaffe et al., Eds., pp. 180–182, International Agency for Research on Cancer, Lyon, France, 4th edition, 2008.
- [5] E. S. Jaffe, "The 2008 WHO classification of lymphomas: implications for clinical practice and translational research," *Hematology the Education Program of the American Society of Hematology*, pp. 523–531, 2009.
- [6] M. Koshy, F. Zhao, and M. C. Garofalo, "Primary MALT lymphoma of the gallbladder. Case report," *Journal of Gastrointestinal and Liver Diseases*, vol. 17, no. 2, pp. 207–210, 2008.
- [7] P. G. Isaacson and J. Spencer, "Malignant lymphoma of mucosa-associated lymphoid tissue," *Histopathology*, vol. 11, no. 5, pp. 445–462, 1987.
- [8] S. E. Gibson, S. H. Swerdlow, J. A. Ferry et al., "Reassessment of small lymphocytic lymphoma in the era of monoclonal B-cell lymphocytosis," *Haematologica*, vol. 96, no. 8, pp. 1144–1152, 2011.
- [9] L. S. Evans and B. W. Hancock, "Non-Hodgkin lymphoma," *The Lancet*, vol. 362, no. 9378, pp. 139–146, 2003.
- [10] R. K. Maryniak and R. Konecki, "2 cases of Richter's syndrome," *Acta Haematologica Polonica*, vol. 22, no. 1, pp. 165–169, 1991.
- [11] C. S. Chim, F. Loong, and L. P. Chung, "Chronic lymphocytic leukaemia involving the gallbladder," *British Journal of Haematology*, vol. 115, no. 4, p. 717, 2001.
- [12] C. A. Dasanu, T. Mesologites, S. Homsy, T. E. Ichim, and D. T. Alexandrescu, "Chronic lymphocytic leukemia presenting with cholecystitis-like symptoms and gallbladder wall invasion," *Southern Medical Journal*, vol. 103, no. 5, pp. 482–484, 2010.
- [13] H. Imenpour, M. Castagnola, G. De Silva et al., "Incidental finding of peripheral B-cell non-Hodgkin lymphoma, lymphocytic/CLL type, of the gallbladder in a patient with chronic cholecystitis," *Pathologica*, vol. 103, no. 5, pp. 307–310, 2011.
- [14] P. G. Isaacson and M.-Q. Du, "MALT lymphoma: from morphology to molecules," *Nature Reviews Cancer*, vol. 4, no. 8, pp. 644–653, 2004.
- [15] K. G. Shah, E. P. Molmenti, J. P. Idrovo, J. Nicastro, and G. Coppa, "Primary gallbladder lymphoma," *American Surgeon*, vol. 77, no. 3, pp. 360–361, 2011.
- [16] P. G. Isaacson, "Gastrointestinal lymphoma," *Human Pathology*, vol. 25, no. 10, pp. 1020–1029, 1994.
- [17] H. Tomori, M. Nagahama, H. Miyazato, M. Shiraishi, Y. Muto, and T. Toda, "Mucosa-associated lymphoid tissue (MALT) of the gallbladder: a clinicopathological correlation," *International Surgery*, vol. 84, no. 2, pp. 144–150, 1999.
- [18] B. Bisig, C. Copie-Bergman, M. Baia et al., "Primary mucosa-associated lymphoid tissue lymphoma of the gallbladder: report of a case harboring API2/MALT1 gene fusion," *Human Pathology*, vol. 40, no. 10, pp. 1504–1509, 2009.
- [19] J. Dierlamm, M. Baens, I. Wlodarska et al., "The apoptosis inhibitor gene API2 and a novel 18q gene, MLT, are recurrently rearranged in the t(11;18)(q21;q21) associated with mucosa-associated lymphoid tissue lymphomas," *Blood*, vol. 93, no. 11, pp. 3601–3609, 1999.
- [20] L. S. Rajesh, R. Nada, T. D. Yadav, and K. Joshi, "Primary low-grade B-cell lymphoma of the mucosa-associated lymphoid tissue of the gallbladder," *Histopathology*, vol. 43, no. 3, pp. 300–301, 2003.
- [21] T. M. Jelic, T. M. Barreta, M. Yu et al., "Primary, extranodal, follicular non-Hodgkin lymphoma of the gallbladder: case report and a review of the literature," *Leukemia and Lymphoma*, vol. 45, no. 2, pp. 381–387, 2004.
- [22] T. Yamamoto, M. Kawanishi, H. Yoshida, E. Kanehira, and H. Itoh, "Primary non-Hodgkin's lymphoma of the gallbladder," *American Journal of Roentgenology*, vol. 184, no. 3, pp. S86–87, 2005.
- [23] W.-T. Huang, S.-S. Chuang, C.-C. Huang, C.-L. Lu, and H.-L. Eng, "Primary diffuse large B-cell lymphoma of the gallbladder with cholelithiasis masquerading as acute cholecystitis: case report and literature review," *The New Zealand Medical Journal*, vol. 120, no. 1251, 2007.
- [24] B. Darmas, S. Mahmud, A. Abbas, and A. L. Baker, "Is there any justification for the routine histological examination of straightforward cholecystectomy specimens?" *Annals of the Royal College of Surgeons of England*, vol. 89, no. 3, pp. 238–241, 2007.
- [25] A. S. Gerrie, C. L. Toze, K. M. Ramadan et al., "Oral fludarabine and rituximab as initial therapy for chronic lymphocytic leukemia or small lymphocytic lymphoma: population-based experience matches clinical trials," *Leukemia and Lymphoma*, vol. 53, no. 1, pp. 77–82, 2012.