



Communication

Verification of the Relationship between Redox Regulation of Thioredoxin Target Proteins and Their Proximity to Thylakoid Membranes

Yuka Fukushi^{1,2}, Yuichi Yokochi^{1,2,3}, Ken-ichi Wakabayashi^{1,2}, Keisuke Yoshida^{1,2} and Toru Hisabori^{1,2,*}

¹ Laboratory for Chemistry and Life Science, Institute of Innovative Research, Tokyo Institute of Technology, Yokohama 226-8503, Japan; fukushi.y.aa@m.titech.ac.jp (Y.F.); Yuichi.Yokochi@kaneka.co.jp (Y.Y.); wakaba@res.titech.ac.jp (K.-i.W.); yoshida.k.ao@m.titech.ac.jp (K.Y.)

² School of Life Science and Technology, Tokyo Institute of Technology, Yokohama 226-8503, Japan

³ Products Technology Team, Supplement Strategic Unit, Pharma & Supplemental Nutrition Solutions Vehicle, KANEKA Corporation, Takasago 676-8688, Japan

* Correspondence: thisabor@res.titech.ac.jp; Tel.: +81-45-924-5234

Abstract: Thioredoxin (Trx) is a key protein of the redox regulation system in chloroplasts, where it modulates various enzyme activities. Upon light irradiation, Trx reduces the disulfide bonds of Trx target proteins (thereby turning on their activities) using reducing equivalents obtained from the photosynthetic electron transport chain. This reduction process involves a differential response, i.e., some Trx target proteins in the stroma respond slowly to the change in redox condition caused by light/dark changes, while the ATP synthase γ subunit (CF₁- γ) located on the surface of thylakoid membrane responds with high sensitivity. The factors that determine this difference in redox kinetics are not yet known, although here, we hypothesize that it is due to each protein's localization in the chloroplast, i.e., the reducing equivalents generated under light conditions can be transferred more efficiently to the proteins on thylakoid membrane than to stromal proteins. To explore this possibility, we anchored SBPase, one of the stromal Trx target proteins, to the thylakoid membrane in *Arabidopsis thaliana*. Analyses of the redox behaviors of the anchored and unanchored proteins showed no significant difference in their reduction kinetics, implying that protein sensitivity to redox regulation is determined by other factors.

Keywords: redox regulation; thioredoxin; chloroplast; thioredoxin target protein



Citation: Fukushi, Y.; Yokochi, Y.; Wakabayashi, K.-i.; Yoshida, K.; Hisabori, T. Verification of the Relationship between Redox Regulation of Thioredoxin Target Proteins and Their Proximity to Thylakoid Membranes. *Antioxidants* **2022**, *11*, 773. <https://doi.org/10.3390/antiox11040773>

Academic Editors: Mirko Zaffagnini and Jeremy Couturier

Received: 28 February 2022

Accepted: 11 April 2022

Published: 13 April 2022

Publisher's Note: MDPI stays neutral with regard to jurisdictional claims in published maps and institutional affiliations.



Copyright: © 2022 by the authors. Licensee MDPI, Basel, Switzerland. This article is an open access article distributed under the terms and conditions of the Creative Commons Attribution (CC BY) license (<https://creativecommons.org/licenses/by/4.0/>).

1. Introduction

The redox regulation system in chloroplasts is responsible for the light-responsive control of various chloroplast proteins. Thioredoxin (Trx) is a small and ubiquitous protein containing two reactive cysteines, which, in this system, reduces the disulfide bonds of Trx target proteins via a dithiol–disulfide exchange reaction. When the photosynthetic electron transport chain is driven by light, part of the reducing equivalents is transferred to ferredoxin (Fd) and then to Trx via ferredoxin-thioredoxin reductase (FTR) [1,2]. Trx then transfers the reducing equivalents to the target proteins, a reaction that generally turns on their activities. Whole-genome analysis of *Arabidopsis thaliana* has identified five Trx subtypes (Trx-*f*, Trx-*m*, Trx-*x*, Trx-*y*, and Trx-*z*) in chloroplasts, each of which has different target selectivity and expression levels [3–7]. Moreover, Trx regulates a variety of chloroplast proteins involved in the regulation of diverse chloroplast functions [8]. For example, several Calvin–Benson cycle enzymes such as fructose-1, 6-bisphosphatase (FBPase) and sedoheptulose-1, 7-bisphosphatase (SBPase), and the chloroplast-localized ATP synthase γ subunit (CF₁- γ) are well-known for their redox-responsive properties [9–14]. Thus, Trx plays a key role in the modulation of chloroplast function through the redox regulation of various targets in response to changes in the light environment.

In general, chloroplast proteins undergo light-dependent redox regulation to coordinately control photosynthetic and metabolic reactions under light conditions. While stroma-localized Trx target proteins, such as FBPase and SBPase, are gradually reduced with changes in light intensity and light exposure time in vivo, CF₁- γ is reduced immediately just after light exposure [11–13]. In addition, the response of rubisco activase (RCA), localized mainly to stroma and partly to the thylakoid membrane, is in-between those of stromal Trx target proteins and CF₁- γ [13,15]. Currently, the factors that determine the differential redox responses of Trx target proteins are unknown. Furthermore, the mechanism underlying the rapid redox kinetics of CF₁- γ and its physiological significance have not yet been elucidated.

We hypothesized that the differences in redox responses of Trx target proteins are due to differences in protein localization in the chloroplast. The localization of CF₁- γ on the thylakoid membrane as a subunit of chloroplast ATP synthase may lead to its rapid redox behavior, because the reducing equivalents from the photosynthetic machinery in thylakoid membrane are transferred more efficiently to thylakoid membrane-bound CF₁- γ than to stromal Trx target proteins.

Our aim was to gain insight into the mechanism underlying highly sensitive redox regulations by verifying the relationship between the subchloroplast localization of Trx target proteins and their reduction kinetics. To accomplish this task, we generated an *A. thaliana* mutant that expresses a membrane-bound SBPase consisting of a thylakoid transmembrane domain (TM domain) fused to SBPase, a stromal Trx target protein. We then analyzed the reduction profiles of this membrane-bound protein. The wild-type SBPase is a dimer protein with the slowest redox behavior among previously analyzed Trx target proteins [13]. Therefore, it is an ideal protein to analyze the effect of thylakoid membrane localization on protein reduction kinetics. The TM domain of thylakoid membrane-localized ascorbate peroxidase (APX) [16] was fused to SBPase because APX is located near photosystem I and its C-terminus TM domain is not involved in its enzymatic activity [17–19]. Our results show that changing the localization of SBPase within the chloroplast does not change its redox profile, suggesting that the sensitivity of CF₁- γ to redox regulation is not dictated by its localization but by other factors.

2. Materials and Methods

2.1. Plant Materials and Growth Conditions

Wild-type *A. thaliana* (Col-0) was used as a control and designated as the “WT” strain. The WT strain served as background for generating plants overexpressing SBPase fused to the TM domain (SBPase-TM_{APX}), and these were designated “OE-SBPase-TM_{APX}”. By targeting the *SalI*–*SacI* fragments, we amplified the sequence encoding the TM domain region (Glu369–Phe426) from cDNA encoding the APX gene (*At1g77490*). The amplified PCR fragments were then cloned into the pBlueScript vector (Agilent) and then the TM_{APX} fragments were amplified as *SalI*–*SacI* fragments by PCR. We used SBPase gene cDNA (*At3g55800*) to amplify the sequence encoding the chloroplast transit signal peptide of SBPase (Met1–Lys59). The amplified genes were fused by over-lap PCR [20] with another DNA fragment encoding the mature region of SBPase (Ala60–Glu396) and the Hexa-His-tag was added to its C-terminus. This fragment was amplified from previously modified pET-23c SBPase constructs [21]. The full-length SBPase included a chloroplast transit signal sequence and Hexa-His-tag fused fragments cloned into the pRI 201-AN vector (Takara) with the aforementioned TM_{APX} fragments. The sequences of the primers used for these experiments are shown in Table S1. To construct an SBPase-TM_{APX} overexpressing plant, OE-SBPase-TM_{APX} plants were transformed with the aforementioned pRI 201-AN construct with SBPase-TM_{APX} encoding region by the agrobacterium-mediated floral dip method [22]. Plants were grown in soil under a 16 h light (50–60 $\mu\text{mol photons m}^{-2} \text{s}^{-1}$)/8 h dark cycle at 22 °C for 4 weeks.

2.2. Protein Extraction from Plant Leaves

Plant leaves were frozen in liquid nitrogen and homogenized with leaf protein extraction solution (2% (*w/v*) SDS, 62.5 mM Tris-HCl (pH 6.8), and 7.5% (*v/v*) glycerol) and the homogenate was heat-treated at 95 °C for 5 min and then centrifuged at 20,400× *g* for 15 min. The concentration of leaf proteins in the supernatant was determined using the BCA protein assay kit (Pierce). To the supernatant, 1/3 of the supernatant volume of SDS sample buffer (8% (*w/v*) SDS, 250 mM Tris-HCl (pH 6.8), 30% (*v/v*) glycerol, and 0.04% (*w/v*) bromophenol blue) containing 20% (*v/v*) 2-mercaptoethanol was added and then the mixture was subjected to SDS-polyacrylamide gel electrophoresis (PAGE). Proteins were transferred to a PVDF membrane by Western blotting.

2.3. Measurements of Plant Growth and Chlorophyll Content

The aboveground fresh weight (FW) of plants was measured. The chlorophyll content in rosette leaves was calculated as the sum of the contents of chlorophyll *a* and *b* after extraction of the chlorophyll with 80% (*v/v*) acetone according to previously published methods [23].

2.4. Isolation and Sub-Fractionation of Chloroplasts

Chloroplast stroma and thylakoid membrane fractions were obtained by collecting intact chloroplasts from plant leaves and disrupting them by osmotic stress as previously described [24].

2.5. Determination of Light-Dependent Protein Redox State In Vivo

Plants were dark-adapted for 8 h and then irradiated at 650–750 $\mu\text{mol photons m}^{-2} \text{s}^{-1}$. The plant leaves were then harvested at the indicated times and frozen in liquid nitrogen. The redox states of the proteins in plant leaves were determined according to previously described methods [12]. To distinguish between the reduced band of endogenous SBPase and the oxidized band of SBPase-TM_{APX} in OE-SBPase-TM_{APX} plants, we used the Penta-His antibody (BSA-free, Qiagen) to detect SBPase-TM_{APX}. The antibodies against SBPase and CF₁- γ were prepared as described previously [12,21].

3. Results and Discussion

3.1. Generation of Plants Expressing Thylakoid Membrane-Anchored SBPase

To evaluate the effect of subchloroplast localization on the reduction kinetics of Trx target proteins, we generated two membrane-bound, SBPase-overexpressing mutant lines of *A. thaliana*. In both mutant plants (designated OE-SBPase-TM_{APX}), the TM domain of the membrane-bound APX was fused to SBPase. Because the thylakoid-bound APX, like CF₀CF₁, localizes mainly to stroma thylakoids [17,25], we expected that the redox behavior of SBPase-TM_{APX} would be similar to that of CF₁- γ . Then we confirmed that the protein (designated SBPase-TM_{APX}) was definitely anchored to the thylakoid membrane (Figure 1A). The expression of SBPase-TM_{APX} in the mutant plants was confirmed by Western blotting using antibodies against SBPase (Figure 1B). The expression levels of SBPase-TM_{APX} in both OE-SBPase-TM_{APX} plant lines were about 150–200% of endogenous SBPase (Figure 1C). We used Line 1 of the OE-SBPase-TM_{APX} plants for subsequent analyses. Figure 2 shows the growth phenotype, FW and chlorophyll content of this OE-SBPase-TM_{APX} plants. Compared to WT, the growth of OE-SBPase-TM_{APX} plants was stunted and its FW was lower; however, its chlorophyll content and major Trx content (data not shown) did not differ significantly from WT plants.

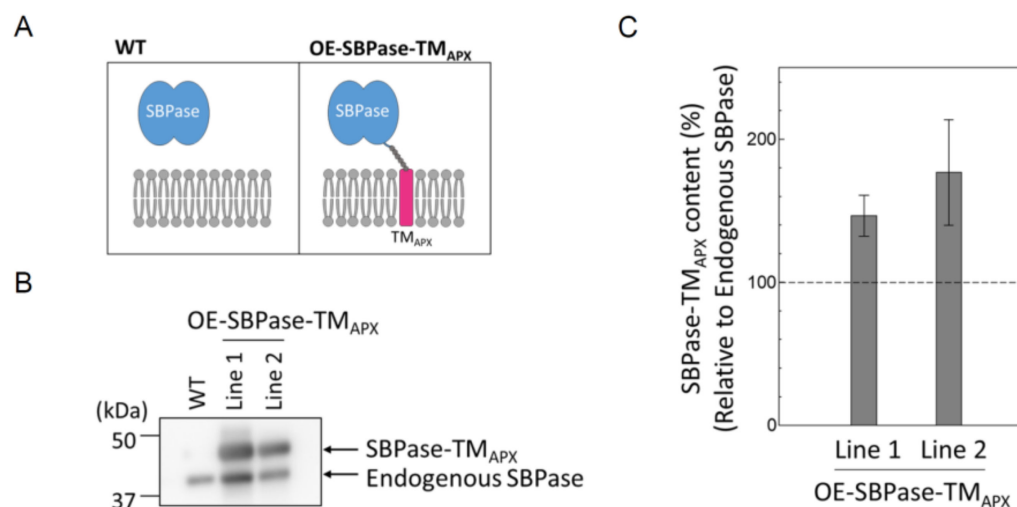


Figure 1. Generation of *A. thaliana* mutants expressing membrane-anchored SBPase. (A) Construction of SBPase-TM_{APX}. The blue ovals represent SBPase and the magenta cylinder represents TM_{APX}. The gray chain represents the Hexa-His-tag linker connecting SBPase to TM_{APX}. (B) SBPase-TM_{APX} expression in two independent lines was confirmed by Western blotting. (C) The relative expression level of SBPase-TM_{APX} in OE-SBPase-TM_{APX} plant was calculated from the signal intensities shown in (B). The expression level of endogenous SBPase in an OE-SBPase-TM_{APX} plant was defined to 100%. Each value represents the mean \pm SD ($n = 3$).

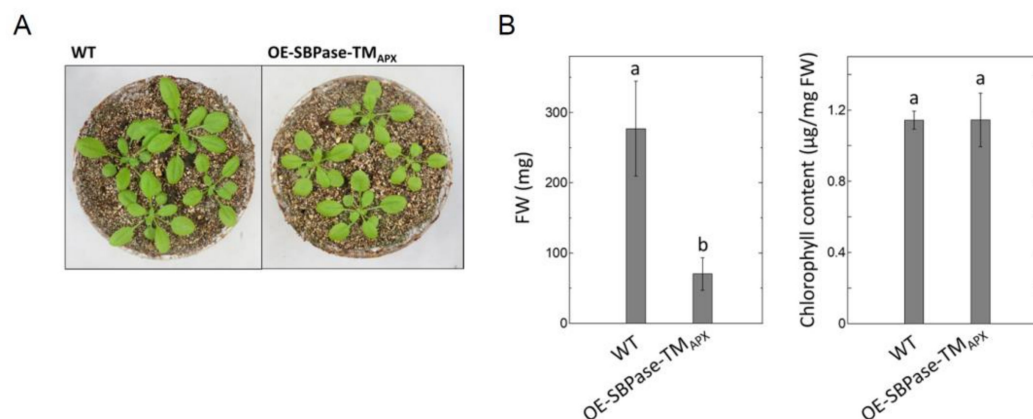


Figure 2. Phenotypes of mutant plants expressing membrane-anchored SBPase. (A) Four-week-old OE-SBPase-TM_{APX} plants. (B) Fresh weight (FW) and chlorophyll content of OE-SBPase-TM_{APX} plant. Each value represents the mean \pm SD ($n = 4$). Different letters indicate significant differences among plant lines ($p < 0.05$; one-way ANOVA and Tukey's honestly significant difference).

To determine whether SBPase-TM_{APX} is anchored to the chloroplast thylakoid membrane in mutant plants, we isolated the intact chloroplasts from leaves and then obtained stroma and thylakoid membrane fractions. Immunoblot analyses using antibodies against SBPase showed that SBPase-TM_{APX} is mainly localized to the thylakoid membrane in OE-SBPase-TM_{APX} plants (Figure 3). To anchor SBPase to thylakoid membrane, we used the TM domain of APX as described above. Thus, since we have confirmed that SBPase-TM_{APX} localized to the thylakoid membrane (Figure 1A), we expect the localization of this enzyme on the thylakoid membrane to be similar to that of CF₁- γ .

3.2. In Vivo Redox Responses of Thylakoid Membrane-Anchored SBPase

To evaluate the effect of subchloroplast localization on the reduction kinetics of Trx target proteins, we analyzed the reduction kinetics of SBPase-TM_{APX} in vivo. As a reference,

we also analyzed the reduction kinetics of thylakoid membrane-bound $CF_1\text{-}\gamma$. The reduction rate was measured by irradiating plant leaves at high-intensity light ($650\text{--}750\ \mu\text{mol photons m}^{-2}\ \text{s}^{-1}$) after dark adaptation and then observing the changes in the redox state of proteins by thiol modification as described previously [12].

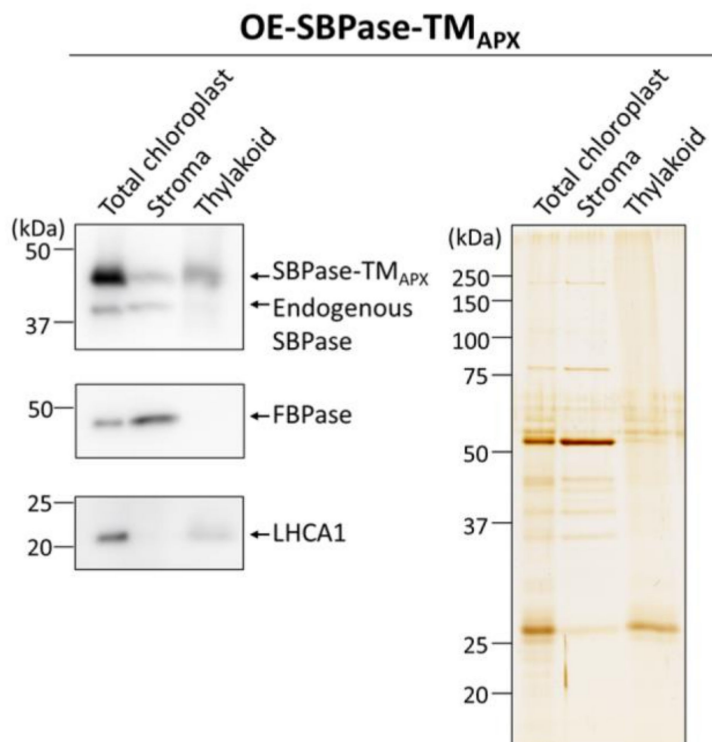


Figure 3. Localization of the membrane-anchored SBPase in chloroplasts. Proteins from stroma and thylakoid membrane fractions of leaves in OE-SBPase-TM_{APX} plants were prepared for immunoblot analysis. The same amounts of proteins were loaded into each lane as shown in an SDS-PAGE gel in the right panel (silver-stained). Antibodies against SBPase was used to detect the endogenous SBPase and SBPase-TM_{APX}. FBPase and light-harvesting complex protein LHCA1 were detected as markers of stroma and thylakoid membrane fractions, respectively, using their specific antibodies.

The reduction profiles in Figure 4 show a gradual reduction of both SBPase-TM_{APX} in OE-SBPase-TM_{APX} plants and endogenous SBPase in WT plants through light exposure time. In contrast, $CF_1\text{-}\gamma$ rapidly reached the maximum reduction level (about 90%) at approximately 120 s after light irradiation of OE-SBPase-TM_{APX} and WT plants. Thus, thylakoid membrane-bound and stroma-localized endogenous SBPases shared the same reduction kinetics, which was distinct from the rapid reduction response of $CF_1\text{-}\gamma$.

$CF_1\text{-}\gamma$ is an abundant protein in the chloroplast, nevertheless, it is reduced rapidly even under low light conditions [13,21]. In contrast, the expression level of SBPase-TM_{APX} was about 150–200% of endogenous SBPase (Figure 1C), but the reduction rates of both proteins were almost equivalent (Figure 4). These results imply that the turnover rate of Trx (the protein responsible for transferring reducing equivalents to these target proteins) is sufficiently rapid for it to reduce all target proteins in chloroplast.

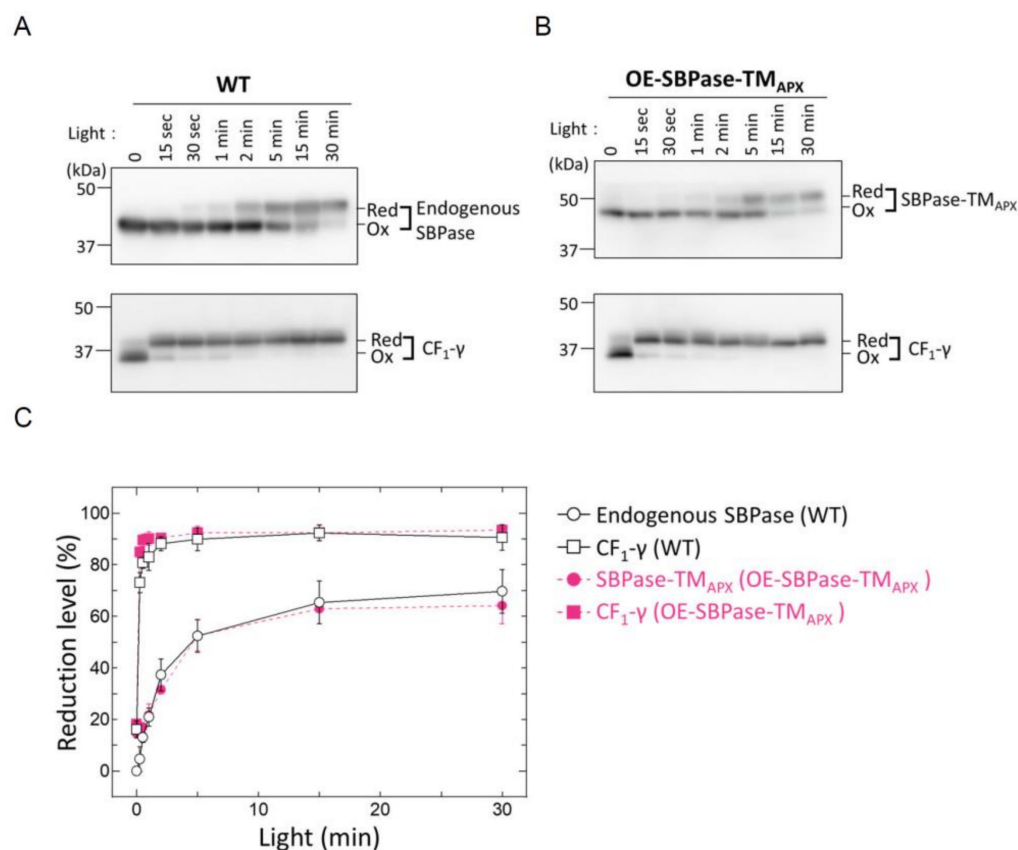


Figure 4. In vivo redox responses of membrane-anchored SBPase. Dark-adapted plants were placed under light conditions ($650\text{--}750\ \mu\text{mol photons m}^{-2}\ \text{s}^{-1}$) for the specified time period and then leaves were frozen in liquid nitrogen. The redox states of endogenous SBPase, SBPase-TM_{APX} and CF₁-γ were determined by the method previously described in [12]. Antibodies against SBPase and CF₁-γ were used to detect the endogenous proteins, while the Penta-His-tag antibody was used to detect SBPase-TM_{APX}, thus providing a clear distinction between the reduced band of endogenous SBPase and the oxidized band of SBPase-TM_{APX} in OE-SBPase-TM_{APX} plants. (A) The redox state of endogenous SBPase and CF₁-γ in WT plants. (B) The redox state of SBPase-TM_{APX} and CF₁-γ in OE-SBPase-TM_{APX} plants. (C) The reduction level of SBPase and CF₁-γ is based on the signal intensities shown in (A,B). The reduction level was calculated as the ratio of the reduced form to the total amount of reduced and oxidized forms. Each value represents the mean \pm SD ($n = 3$). Red, reduced form; Ox, oxidized form.

4. Conclusions

Based on our results, we conclude subchloroplast localization does not affect the reduction kinetics of SBPase. In chloroplasts, target proteins are continuously oxidized, even under light irradiation conditions [11], and the balance between the reduction and oxidation processes should be an important factor in determining the reduction kinetics. Another possible factor affecting the reduction kinetics is the different affinities between Trx and each Trx target protein, which are based on differences in surface electrostatic potential. Studies suggest that changes in surface electrostatic charge around the reactive cysteine pair of CF₁-γ causes changes in Trx-dependent redox properties [26–28].

In addition, NADPH-thioredoxin reductase C (NTRC) has been recently proposed as another factor responsible for the rapid reduction of CF₁-γ in addition to Trx [29,30]. NTRC reduces the target proteins using NADPH as a source of reducing equivalents [31]. Overall, these studies indicate that, rather than subchloroplast localization, the sensitivity to redox regulation of Trx target proteins may involve other complex mechanisms.

Supplementary Materials: The following supporting information can be downloaded at: <https://www.mdpi.com/article/10.3390/antiox11040773/s1>, Table S1: Primers used in this study.

Author Contributions: Conceptualization, Y.F., K.Y. and T.H.; methodology, Y.F., Y.Y. and K.Y.; investigation, Y.F., Y.Y. and K.Y.; writing—original draft preparation, Y.F. and K.Y.; writing—review and editing, K.-i.W. and T.H.; supervision, K.-i.W. and T.H.; project administration, T.H. All authors have read and agreed to the published version of the manuscript.

Funding: This research was funded by the Japan Society for the Promotion of Science (JSPS) KAKENHI Grant Number [21H02502] to T.H.

Institutional Review Board Statement: Not applicable.

Informed Consent Statement: Not applicable.

Data Availability Statement: Data is contained within the article.

Acknowledgments: We thank the Biomaterial Analysis Center at the Tokyo Institute of Technology for supporting the DNA sequencing and Suzukake-dai Material Analysis Division, Technical Department, Tokyo Institute of Technology, for mass spectrometry analysis. This study was supported by the Dynamic Alliance for Open Innovation Bridging Human, Environment and Materials.

Conflicts of Interest: The authors declared no conflict of interest, because they all belonged to the same laboratory when this study was conducted.

References

1. Buchanan, B.B. Role of Light in the Regulation of Chloroplast Enzymes. *Annu. Rev. Plant Physiol. Plant Mol. Biol.* **1980**, *31*, 341–374. [[CrossRef](#)]
2. Buchanan, B.B.; Schurmann, P.; Wolosiuk, R.A.; Jacquot, J.P. The ferredoxin/thioredoxin system: From discovery to molecular structures and beyond. *Photosynth. Res.* **2002**, *73*, 215–222. [[CrossRef](#)] [[PubMed](#)]
3. The Arabidopsis Genome Initiative. Analysis of the genome sequence of the flowering plant *Arabidopsis thaliana*. *Nature* **2000**, *408*, 796–815. [[CrossRef](#)] [[PubMed](#)]
4. Lemaire, S.D.; Michelet, L.; Zaffagnini, M.; Massot, V.; Issakidis-Bourguet, E. Thioredoxins in chloroplasts. *Curr. Genet.* **2007**, *51*, 343–365. [[CrossRef](#)] [[PubMed](#)]
5. Serrato, A.J.; Fernandez-Trijueque, J.; Barajas-Lopez, J.D.; Chueca, A.; Sahrawy, M. Plastid thioredoxins: A “one-for-all” redox-signaling system in plants. *Front. Plant Sci.* **2013**, *4*, 463. [[CrossRef](#)] [[PubMed](#)]
6. Yoshida, K.; Hisabori, T. Distinct electron transfer from ferredoxin-thioredoxin reductase to multiple thioredoxin isoforms in chloroplasts. *Biochem. J.* **2017**, *474*, 1347–1360. [[CrossRef](#)] [[PubMed](#)]
7. Yokochi, Y.; Sugiura, K.; Takemura, K.; Yoshida, K.; Hara, S.; Wakabayashi, K.I.; Kitao, A.; Hisabori, T. Impact of key residues within chloroplast thioredoxin-f on recognition for reduction and oxidation of target proteins. *J. Biol. Chem.* **2019**, *294*, 17437–17450. [[CrossRef](#)]
8. Hisabori, T.; Motohashi, K.; Hosoya-Matsuda, N.; Ueoka-Nakanishi, H.; Romano, P.G.N. Towards a Functional Dissection of Thioredoxin Networks in Plant Cells. *Photochem. Photobiol.* **2007**, *83*, 145–151. [[CrossRef](#)]
9. Michelet, L.; Zaffagnini, M.; Morisse, S.; Sparla, F.; Perez-Perez, M.E.; Francia, F.; Danon, A.; Marchand, C.H.; Fermani, S.; Trost, P.; et al. Redox regulation of the Calvin-Benson cycle: Something old, something new. *Front. Plant Sci.* **2013**, *4*, 470. [[CrossRef](#)]
10. Mills, J.D.; Mitchell, P.; Schurmann, P. Modulation of coupling Factor ATPase Activity in intact chloroplasts, the role of the thioredoxin system. *FEBS Lett.* **1980**, *112*, 173–177. [[CrossRef](#)]
11. Konno, H.; Nakane, T.; Yoshida, M.; Ueoka-Nakanishi, H.; Hara, S.; Hisabori, T. Thiol modulation of the chloroplast ATP synthase is dependent on the energization of thylakoid membranes. *Plant Cell Physiol.* **2012**, *53*, 626–634. [[CrossRef](#)] [[PubMed](#)]
12. Yoshida, K.; Matsuoka, Y.; Hara, S.; Konno, H.; Hisabori, T. Distinct redox behaviors of chloroplast thiol enzymes and their relationships with photosynthetic electron transport in *Arabidopsis thaliana*. *Plant Cell Physiol.* **2014**, *55*, 1415–1425. [[CrossRef](#)]
13. Yoshida, K.; Hisabori, T. Determining the Rate-Limiting Step for Light-Responsive Redox Regulation in Chloroplasts. *Antioxidants* **2018**, *7*, 153. [[CrossRef](#)] [[PubMed](#)]
14. Sekiguchi, T.; Yoshida, K.; Okegawa, Y.; Motohashi, K.; Wakabayashi, K.I.; Hisabori, T. Chloroplast ATP synthase is reduced by both f-type and m-type thioredoxins. *Biochim. Biophys. Acta Bioenerg.* **2020**, *1861*, 148261. [[CrossRef](#)] [[PubMed](#)]
15. Jin, S.H.; Hong, J.; Li, X.Q.; Jiang, D.A. Antisense inhibition of Rubisco activase increases Rubisco content and alters the proportion of Rubisco activase in stroma and thylakoids in chloroplasts of rice leaves. *Ann. Bot.* **2006**, *97*, 739–744. [[CrossRef](#)]
16. Takahashi, K.; Takabayashi, A.; Tanaka, A.; Tanaka, R. Functional analysis of light-harvesting-like protein 3 (LIL3) and its light-harvesting chlorophyll-binding motif in *Arabidopsis*. *J. Biol. Chem.* **2014**, *289*, 987–999. [[CrossRef](#)]
17. Miyake, C.; Asada, K. Thylakoid-Bound Ascorbate Peroxidase in Spinach Chloroplasts and Photoreduction of Its Primary Oxidation Product Monodehydroascorbate Radicals in Thylakoids. *Plant Cell Physiol.* **1992**, *33*, 541–553.

18. Ishikawa, T.; Sakai, K.; Yoshimura, K.; Takeda, T.; Shigeoka, S. cDNAs encoding spinach stromal and thylakoid-bound ascorbate peroxidase, differing in the presence or absence of their 3'-coding regions. *FEBS Lett.* **1996**, *384*, 289–293. [[CrossRef](#)]
19. Yoshimura, K.; Yabuta, Y.; Tamoi, M.; Ishikawa, T.; Shigeoka, S. Alternatively spliced mRNA variants of chloroplast ascorbate peroxidase isoenzymes in spinach leaves. *Biochem. J.* **1999**, *338*, 41–48. [[CrossRef](#)]
20. Higuchi, R.; Krummel, B.; Saiki, R.K. A general method of in vitro preparation and specific mutagenesis of DNA fragments: Study of protein and DNA interactions. *Nucleic Acids Res.* **1988**, *16*, 7351–7367. [[CrossRef](#)]
21. Yoshida, K.; Hara, S.; Hisabori, T. Thioredoxin selectivity for thiol-based redox regulation of target proteins in chloroplasts. *J. Biol. Chem.* **2015**, *290*, 14278–14288. [[CrossRef](#)] [[PubMed](#)]
22. Clough, S.J.; Bent, A.F. Floral dip: A simplified method for Agrobacterium-mediated transformation of *Arabidopsis thaliana*. *Plant J.* **1998**, *16*, 735–743. [[CrossRef](#)]
23. Porra, R.J.; Thompson, W.A.; Kriedemann, P.E. Determination of Accurate Extinction Coefficients and Simultaneous-Equations for Assaying Chlorophyll-a and Chlorophyll-B Extracted with 4 Different Solvents—Verification of the Concentration of Chlorophyll Standards by Atomic-Absorption Spectroscopy. *Biochim. Biophys. Acta* **1989**, *975*, 384–394. [[CrossRef](#)]
24. Yoshida, K.; Hara, A.; Sugiura, K.; Fukaya, Y.; Hisabori, T. Thioredoxin-like2/2-Cys peroxiredoxin redox cascade supports oxidative thiol modulation in chloroplasts. *Proc. Natl. Acad. Sci. USA* **2018**, *115*, E8296–E8304. [[CrossRef](#)] [[PubMed](#)]
25. Koochak, H.; Puthiyaveetil, S.; Mullendore, D.L.; Li, M.; Kirchoff, H. The structural and functional domains of plant thylakoid membranes. *Plant J.* **2019**, *97*, 412–429. [[CrossRef](#)] [[PubMed](#)]
26. Konno, H.; Yodogawa, M.; Stumpp, M.T.; Kroth, P.; Strotmann, H.; Motohashi, K.; Amano, T.; Hisabori, T. Inverse regulation of F₁-ATPase activity by a mutation at the regulatory region on the γ subunit of chloroplast ATP synthase. *Biochem. J.* **2000**, *352*, 783–788. [[CrossRef](#)] [[PubMed](#)]
27. Ueoka-Nakanishi, H.; Nakanishi, Y.; Konno, H.; Motohashi, K.; Bald, D.; Hisabori, T. Inverse regulation of rotation of F₁-ATPase by the mutation at the regulatory region on the γ subunit of chloroplast ATP synthase. *J. Biol. Chem.* **2004**, *279*, 16272–16277. [[CrossRef](#)]
28. Kohzuma, K.; Dal Bosco, C.; Meurer, J.; Kramer, D.M. Light- and Metabolism-related Regulation of the Chloroplast ATP Synthase Has Distinct Mechanisms and Functions. *J. Biol. Chem.* **2013**, *288*, 13156–13163. [[CrossRef](#)]
29. Carrillo, L.R.; Froehlich, J.E.; Cruz, J.A.; Savage, L.J.; Kramer, D.M. Multi-level regulation of the chloroplast ATP synthase: The chloroplast NADPH thioredoxin reductase C (NTRC) is required for redox modulation specifically under low irradiance. *Plant J.* **2016**, *87*, 654–663. [[CrossRef](#)]
30. Naranjo, B.; Mignee, C.; Krieger-Liszkay, A.; Hornero-Mendez, D.; Gallardo-Guerrero, L.; Cejudo, F.J.; Lindahl, M. The chloroplast NADPH thioredoxin reductase C, NTRC, controls non-photochemical quenching of light energy and photosynthetic electron transport in *Arabidopsis*. *Plant Cell Environ.* **2016**, *39*, 804–822. [[CrossRef](#)]
31. Bernal-Bayard, P.; Hervas, M.; Cejudo, F.J.; Navarro, J.A. Electron transfer pathways and dynamics of chloroplast NADPH-dependent thioredoxin reductase C (NTRC). *J. Biol. Chem.* **2012**, *287*, 33865–33872. [[CrossRef](#)] [[PubMed](#)]