

## Generation of Rat Monoclonal Antibodies Specific for Human Stromal Cell-Derived Factor-2

Masako Tanaka,<sup>1</sup> Masayuki Shiota,<sup>2</sup> Masaru Koyama,<sup>3</sup> Jun Nakayama,<sup>3</sup> Masakazu Yashiro,<sup>4</sup> Kentaro Semba,<sup>3</sup> and Nobuhito Goda<sup>3</sup>

Stromal cell-derived factor-2 (SDF-2) is reportedly involved in multiple endoplasmic reticulum (ER) functions, including the misfolded protein catabolic process, protein glycosylation, and ER protein quality control. However, the precise molecular and cellular functions of SDF-2 remain unknown. Previously, we discovered that SDF-2 mediates acquired resistance to oxaliplatin in human gastric cancer cells. In this study, we have generated SDF-2-specific monoclonal antibodies (mAbs), using the rat medial iliac lymph node method, as a tool to explore novel mechanisms of oxaliplatin resistance. The antibodies detected endogenous human SDF-2 in immunoblotting analyses. In addition, immunoprecipitation analyses revealed the availability of these antibodies for human SDF-2. Thus, these mAbs will be available to elucidate molecular and cellular functions of SDF-2 in cancer cells.

**Keywords:** SDF-2, the rat medial iliac lymph method, mAbs

### Introduction

**S**TROMAL CELL-DERIVED FACTOR-2 (SDF-2) was first isolated and cloned as complementary DNA (cDNA) encoding a novel secretory protein from the endoplasmic reticulum (ER) and Golgi apparatus of a mouse stromal cell line, ST-2.<sup>(1)</sup> The human *SDF2* gene maps on chromosome 17 at q11.2 and encodes a protein of 211 amino acids, including three MIR (protein O-mannosyltransferase [PMT], inositol 1,4,5-trisphosphate receptor [IP3R], and ryanodine receptor [RyR]) domains.<sup>(1–3)</sup>

SDF-2 also contains an N-terminal hydrophobic signal sequence and a C-terminal ER retention-like motif, HAEL. Fujimori et al. confirmed that the HAEL motif functions as an ER retention signal; therefore, SDF-2 is localized in the ER.<sup>(4)</sup> They have also suggested that SDF-2 associates with chaperones in the ER, which contributes to preventing the aggregation of misfolded proteins.<sup>(4)</sup> In human placental cells, SDF-2 may contribute to cell survival during the unfolded protein response by interfering with ER stress proteins such as spliced XBP1 (XBP1s) and CHOP.<sup>(5)</sup>

Similarly, other studies in mice and in plants such as *Arabidopsis thaliana* and *Oryza sativa* L. have shown that SDF-2 acts as a component of the ER chaperone and is related to quality control of newly synthesized proteins.<sup>(3,6–9)</sup>

Our previous study has shown that SDF-2 mediates acquired resistance to oxaliplatin, a platinum-based chemo-

therapeutic agent, in the human gastric cancer cell line OCUM-2M.<sup>(10)</sup> However, since the exact molecular functions of SDF-2 are not known, it is unclear by which mechanism SDF-2 confers oxaliplatin resistance to OCUM-2M cells. Therefore, in this study, we used the rat medial iliac lymph node method to generate monoclonal antibodies (mAbs) against human SDF-2. The generated SDF-2 mAbs will be useful tools in the immunoblotting and immunoprecipitation of human SDF-2 proteins in cancer cells.

### Materials and Methods

#### Cell culture

The human gastric cancer cell line, OCUM-2M, and the oxaliplatin-resistant subcell line, OCUM-2M/OXA, were cultured in Dulbecco's modified Eagle's medium (DMEM) containing high glucose (Fujifilm Wako Pure Chemical Corporation, Osaka, Japan) and supplemented with 10% fetal bovine serum (FBS), 100 U/mL penicillin, and 0.1 mg/mL streptomycin (Meiji Seika Pharma Co., Tokyo, Japan) in a humidified 5% CO<sub>2</sub> incubator at 37°C. The cell lines were derived from a diffuse-type human gastric cancer patient, and the subline was established from parental cells by stepwise exposure to oxaliplatin.<sup>(11)</sup>

<sup>1</sup>Waseda Institute for Advanced Study, Waseda University, Tokyo, Japan.

<sup>2</sup>Research Support Platform, Osaka City University Graduate School of Medicine, Osaka, Japan.

<sup>3</sup>Department of Life Science and Medical BioScience, School of Advanced Science and Engineering, Waseda University, Tokyo, Japan.

<sup>4</sup>Department of Molecular Oncology and Therapeutics, Osaka City University Graduate School of Medicine, Osaka, Japan.

### Construction of SDF-2-knockout cells by CRISPR/Cas9

To generate SDF2-knockout OCUM-2M/OXA cells, cells were cotransfected with the human codon-optimized SpCas9 and chimeric guide RNA (gRNA) expressing pX330 vector (pX330-U6-Chimeric\_BB-CBh-hSpCas9, No. 42230; Addgene) targeting 5'-ggggggtttgtggagcgtgtgg-3' in the human SDF2 coding sequence and pX459 vector expressing SpCas9 and puromycin resistance gene (pSpCas9[BB]-2A-Puro [PX459] V2.0, No. 62988; Addgene) using Lipofectamine LTX reagent (Thermo Fisher Scientific, Waltham, MA). Transfected cells were subjected to puromycin selection for 96 hours and then cloned by limiting dilution to obtain single cell clones. Individual clones were validated by sequencing with polymerase chain reaction-amplified fragments for frameshift indel mutations and by immunoblotting analysis with an SDF-2-specific antibody (Santa Cruz Biotechnology, Dallas, TX).

### Rat immunization and mAb production

Anti-SDF-2 rat mAbs were generated using the rat lymph node method established by Sado et al.<sup>(12)</sup> A 9-week-old female WKY/Izm rat (Japan SLC, Hamamatsu, Japan) was injected in the hind footpads with 200  $\mu$ L of an emulsion containing 266  $\mu$ g of a synthetic peptide of 20 amino acids (GIFMKPSELLKAEAHHAELC), which corresponded to residues 193–211 of human SDF-2, and complete Freund's adjuvant. After 19 days, the cells from the medial iliac lymph nodes from the immunized rat were harvested and then fused with mouse myeloma SP2 cells at a ratio of 5:1 in a 50% polyethylene glycol (PEG 1500; Roche, Basel, Switzerland) solution. The resulting hybridoma cells were plated into 96-well plates and cultured in HAT selection medium (Hybridoma-SFM [Thermo Fisher Scientific]; 10% FBS; 5% BM-condimed H1 [Roche]; 100 mM hypoxanthine; 0.4 mM aminopterin; and 16 mM thymidine). Eight days postfusion, the hybridoma supernatants were screened using an enzyme-linked immunosorbent assay (ELISA) against the human SDF-2 synthetic peptide. Positive clones were subcloned and rescreened by ELISA, immunoblotting, and immunoprecipitation.

### Enzyme-linked immunosorbent assay

The synthetic human SDF-2 peptide (0.92  $\mu$ g/mL) was diluted in ELISA buffer (20 mM sodium phosphate, pH 7.2) and adsorbed on the surface of Serocluuster 96-well Nunc-Immuno<sup>TM</sup> Plate II (Thermo Fisher Scientific) by incubating overnight at 4°C. The plates were then blocked with 1% bovine serum albumin in TBS-T to avoid nonspecific binding. Next, the hybridoma supernatants were added and the plates were again incubated overnight at 4°C. After washing three times with TBS-T, the plates were incubated for 30 minutes at room temperature with horseradish peroxidase (HRP)-conjugated anti-rat IgG antibody (GE Healthcare, Buckinghamshire, United Kingdom) at a dilution of 1:5000. After washing with TBS-T, immunoreactivity was visualized using a pNPP phosphatase substrate system (KPL, Gaithersburg, MD), and the absorbance was measured at 450 nm using the Varioskan<sup>TM</sup> LUX (Thermo Fisher Scientific).

### Viral infection

Lentiviral packaging was performed by cotransfection of pLenti6-P<sub>Ubc</sub>-mSlc7a1-Hyg<sup>R</sup> (No. 17224; Addgene), HIV-

based vectors including a cDNA expression cassette, and the pPACK packaging plasmids (System Biosciences, Palo Alto, CA) as previously described.<sup>(13)</sup> Plasmid DNAs were transfected into 293T cells by the calcium phosphate transfection method. At 32 hours post-transfection, the culture supernatants were harvested and stored as lentivirus stock. OCUM-2M cells were plated at a density of  $1 \times 10^5$  cells/well in 12-well plates, and then infected with fivefold diluted lentiviral stock solution. After 24 hours, the virus solution was replaced with fresh culture media. OCUM-2M/mSlc7a1 cells were then selected by 800  $\mu$ g/mL hygromycin (Fujifilm Wako Pure Chemical Corporation) for 5 days. Plat-E cells were transfected with SDF2-FLAG/pMXs-Puro (RTV-012; Cell Biolabs, San Diego, CA) by the PEI (PolyScience, Niles, IL) transfection method for retrovirus production. At 32 hours post-transfection, the culture supernatants were harvested and stored as retrovirus stock. OCUM-2M/mSlc7a1 cells were plated at a density of  $1 \times 10^5$  cells/well in 12-well plates, followed by infection with fivefold diluted retroviral stock solution. OCUM-2M/SDF-2-FLAG cells were selected by 1  $\mu$ g/mL puromycin (Fujifilm Wako Pure Chemical Corporation) for 5 days.

### Preparation of the microsomal fraction

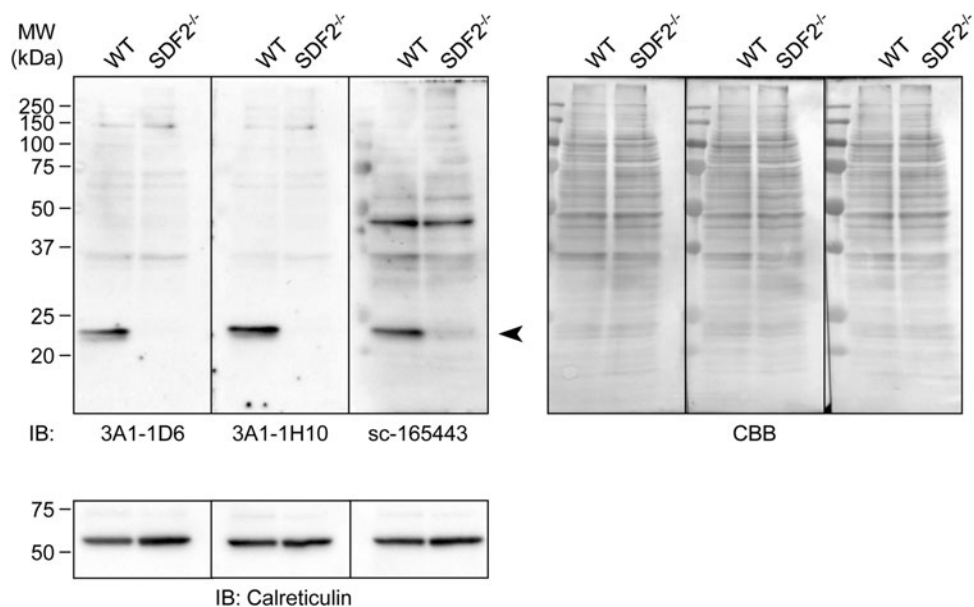
OCUM-2M/SDF-2-FLAG cells were homogenized with 0.25 M sucrose buffer containing 5 mM Tris-HCl (pH 7.5) and 1 mM EDTA in a Potter-type homogenizer. The homogenate was centrifuged at  $1,000 \times g$  for 15 minutes at 4°C to remove the nuclei and cellular debris. The supernatant was further centrifuged at  $12,000 \times g$  for 10 minutes, and followed by ultracentrifugation using the SW 41 rotor in the Optima<sup>TM</sup> L-90K ultracentrifuge (Beckman Coulter, Inc., Pasadena, CA) at  $150,000 \times g$  for 20 minutes at 4°C to collect the microsomes. The microsomal pellets were lysed with lysis buffer containing 50 mM HEPES-NaOH (pH 7.5), 150 mM NaCl, 1% NP-40, 5 mM EDTA, and protease inhibitor cocktail (Nacalai Tesque, Kyoto, Japan).

### Immunoprecipitation

The microsomal fraction of OCUM-2M/SDF-2-FLAG cells was lysed in immunoprecipitation buffer containing 50 mM HEPES-NaOH (pH 7.5), 150 mM NaCl, 0.5% NP-40, 5 mM EDTA, and protease inhibitor cocktail (Nacalai Tesque) for 15 minutes on ice. The lysates were incubated with recombinant protein G agarose (Thermo Fisher Scientific) for 2 hours at room temperature to preclear any nonspecific binding. The precleared lysates were then subjected to immunoprecipitation with rat anti-SDF-2 mAbs and incubated overnight at 4°C. The precipitates were washed three times with immunoprecipitation buffer, followed by elution with sodium dodecyl sulfate (SDS) sample buffer for 5 minutes at 95°C. The eluants were subjected to immunoblot analysis.

### Immunoblotting

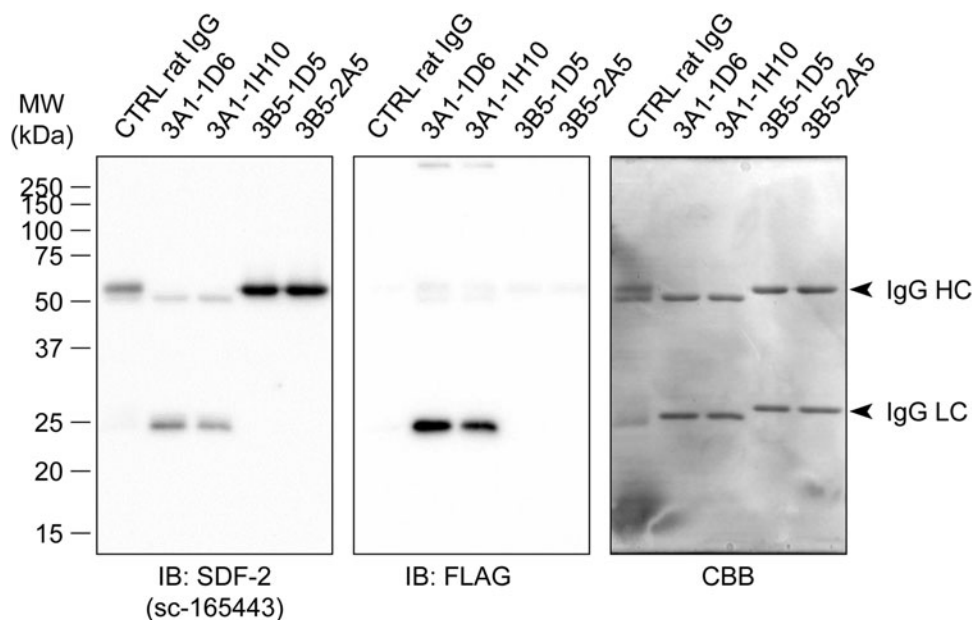
The microsomal fraction of OCUM-2M cells was washed twice with phosphate-buffered saline and lysed in lysis buffer containing 50 mM HEPES-NaOH (pH 7.5), 150 mM NaCl, 1% NP-40, 5 mM EDTA, and protease inhibitor cocktail (Nacalai Tesque). The samples were subjected to sodium dodecyl sulfate/polyacrylamide gel electrophoresis (SDS-PAGE) using 12.5% acrylamide gels and transferred to Immobilon-P transfer membrane (Merck KGaA, Darmstadt, Germany). The



**FIG. 1.** Specificity of anti-SDF-2 mAbs. Immunoblotting analysis of the microsomal fraction from WT or *SDF2*-knockout (*SDF2*<sup>-/-</sup>) OCUM-2M/OXA cells, using anti-SDF-2 antibodies. Commercially available anti-SDF-2 antibody, sc-165443, was used as a positive control, and blots were reprobed with an anti-calreticulin antibody as a loading control. All blots were striped and restained with CBB R-250 staining to visualize the amounts of loaded proteins. Arrowhead, SDF-2. CBB, coomassie brilliant blue; mAbs, monoclonal antibodies; SDF-2, stromal cell-derived factor-2; WT, wild type.

membranes were blocked for 1 hour at room temperature with 1% skim milk in TBS-T (0.1% Tween-20), and then incubated overnight at 4°C with rat anti-SDF-2 mAbs diluted to 1:1,000 in Can Get Signal Immunoreaction Enhancer Solution 1 (Toyobo, Osaka, Japan). After washing in TBS-T, the membranes were incubated for 1 hour at room temperature with goat anti-rat IgG-HRP (GE Healthcare) diluted to 1:10,000 in Can Get Signal Immunoreaction Enhancer Solution 2 (Toyobo). After washing in TBS-T, chemiluminescence detection was

performed with Immobilon ECL Ultra Western HRP Substrate or Immobilon Western HRP Substrate (Merck KGaA) and visualized directly using a ChemiDoc XRS+ system (Bio-Rad Laboratories, Berkeley, CA). Additional antibodies were purchased from the following sources: anti-calreticulin antibody from Cell Signaling Technology (Danvers, MA); anti-FLAG-HRP antibody from Merck KGaA; anti-SDF-2 antibody from Santa Cruz Biotechnology; and anti-rabbit IgG HRP linked F(ab')<sub>2</sub> fragment donkey from GE Healthcare. The membranes



**FIG. 2.** Immunoprecipitation using anti-SDF-2 mAbs with the microsomal fraction from SDF-2-FLAG expressing OCUM-2M cells. Control rat IgG and negative clones of generated mAbs (3B5-1D5 and 3B5-2A5) were used as negative controls. All blots were striped and restained with CBB staining to visualize the amounts of loaded proteins. Arrowheads, IgG heavy and light chains.

were stripped in boiled Milli-Q water and then stained with Quick-CBB (Fujifilm Wako Pure Chemical Corporation) for visualizing amounts of loaded proteins.

## Results and Discussion

The full-length human SDF-2 protein is a 211-amino acid sequence. To generate an mAb specific for the human SDF-2 protein, we utilized a peptide of 20 amino acids, which corresponded to residues 193–211 of human SDF-2 as an antigen. Following the rat lymph node method for generating antibodies, lymphocytes were collected from the enlarged lymph nodes of the immunized rats 19 days postimmunization. The hybridomas, which were obtained after fusing the lymphocytes with mouse myeloma SP2 cells, were tested for the production of mAbs that react with the synthetic peptide antigen by ELISA. The positive clones were examined by immunoblotting to evaluate their reactivity against human SDF-2 in total extracts of PANC-1 cells. One clone, designated as mAb 3A1, reacted with a 23 kDa protein band. We therefore subcloned and rescreened by ELISA to validate the specificity of the mAb for SDF-2 using *SDF2*-knockout cells. Because SDF-2 is localized in the ER, we performed immunoblotting for SDF-2 using the microsomes, which are heterogeneous vesicle-like fragments formed from pieces of the ER of *SDF2*-knockout OCUM-2M/OXA cells. All the clones were purified using protein G affinity resins. Using a rat isotyping kit, the immunoglobulin class of both mAbs, 3A1-1D6 and 3A1-1H10, was determined to be rat IgG2 $\alpha$ κ. Both clones gave specific signals as a 23 kDa band in immunoblotting (Fig. 1). Commercially available anti-SDF-2 antibody, sc-165443, also gave the same signal. We next examined the availability of both clones in immunoprecipitation analysis. SDF-2 and FLAG were detected slightly lower than the rat IgG light chains in both precipitants of the 3A1 clone, whereas subclones of 3B5 (negative clones) and control rat IgG did not; this indicated that the 3A1 clone efficiently immunoprecipitated the human SDF-2-FLAG fusion proteins (Fig. 2). From these findings, we concluded that mAb 3A1 specifically recognized endogenous human SDF-2. This novel tool will be beneficial for immunoblotting and immunoprecipitation. The use of this antibody will allow for further elucidation of the molecular and cellular functions of SDF-2 in the ER functions of cancer cells.

## Acknowledgment

The authors thank the Research Support Platform of Osaka City University Graduate School of Medicine for technical support.

## Author Disclosure Statement

No competing financial interests exist.

## Funding Information

This work was partly supported by JSPS KAKENHI Grant, number 17K15757, and the Uehara Memorial Foundation.

## References

- Hamada T, Tashiro K, Tada H, Inazawa J, Shirozu M, Shibahara K, Nakamura T, Martina N, Nakano T, and Honjo T: Isolation and characterization of a novel secretory protein, stromal cell-derived factor-2 (SDF-2) using the signal sequence trap method. *Gene* 1996;176:211–214.
- Ponting CP: Novel repeats in ryanodine and IP3 receptors and protein O-mannosyltransferases. *Trends Biochem Sci* 2000;25:48–50.
- Lorenzon-Ojea AR, Caldeira W, Ribeiro AF, Fisher SJ, Guzzo CR, and Bevilacqua E: Stromal cell derived factor-2 (Sdf2): A novel protein expressed in mouse. *Int J Biochem Cell Biol* 2014;53:262–270.
- Fujimori T, Suno R, Iemura SI, Natsume T, Wada I, and Hosokawa N: Endoplasmic reticulum proteins SDF2 and SDF2L1 act as components of the BiP chaperone cycle to prevent protein aggregation. *Genes Cells* 2017;22:684–698.
- Lorenzon-Ojea AR, Guzzo CR, Kapidzic M, Fisher SJ, and Bevilacqua E: Stromal cell-derived factor 2: A novel protein that interferes in endoplasmic reticulum stress pathway in human placental cells. *Biol Reprod* 2016;95:41.
- Lorenzon-Ojea AR, Yung HW, Burton GJ, and Bevilacqua E: The potential contribution of stromal cell-derived factor 2 (SDF2) in endoplasmic reticulum stress response in severe preeclampsia and labor-onset. *Biochim Biophys Acta Mol Basis Dis* 2019;1866:165386.
- Park CJ, Sharma R, Lefebvre B, Canlas PE, and Ronald PC: The endoplasmic reticulum-quality control component SDF2 is essential for XA21-mediated immunity in rice. *Plant Sci* 2013;210:53–60.
- Chott A, Ravaud S, Keller S, Radzimanowski J, Viotti C, Hillmer S, Sinning I, and Strahl S: Arabidopsis stromal-derived Factor2 (SDF2) is a crucial target of the unfolded protein response in the endoplasmic reticulum. *J Biol Chem* 2010;285:18113–18121.
- Schott A, and Strahl S: Methods to study stromal-cell derived factor 2 in the context of ER stress and the unfolded protein response in *Arabidopsis thaliana*. *Methods Enzymol* 2011;490:295–319.
- Takahashi K, Tanaka M, Yashiro M, Matsumoto M, Ohtsuka A, Nakayama KI, Izumi Y, Nagayama K, Miura K, Iwao H, and Shiota M: Protection of stromal cell-derived factor 2 by heat shock protein 72 prevents oxaliplatin-induced cell death in oxaliplatin-resistant human gastric cancer cells. *Cancer Lett* 2016;378:8–15.
- Zhang X, Yashiro M, Qiu H, Nishii T, Matsuzaki T, and Hirakawa K: Establishment and characterization of multidrug-resistant gastric cancer cell lines. *Anticancer Res* 2010;30:915–921.
- Sado Y, Kagawa M, Kishiro Y, Sugihara K, Naito I, Seyer JM, Sugimoto M, Oohashi T, and Ninomiya Y: Establishment by the rat lymph node method of epitope-defined monoclonal antibodies recognizing the six different alpha chains of human type IV collagen. *Histochem Cell Biol* 1995;104:267–275.
- Nakayama J, Ito E, Fujimoto J, Watanabe S, and Semba K: Comparative analysis of gene regulatory networks of highly metastatic breast cancer cells established by orthotopic transplantation and intra-circulation injection. *Int J Oncol* 2017;50:497–504.

Address correspondence to:

Masako Tanaka  
Waseda Institute for Advanced Study  
Waseda University  
2-2 Wakamatsu-cho, Shinjuku-ku  
Tokyo 162-8480  
Japan

E-mail: tanakamsk@aoni.waseda.jp

Received: November 1, 2019

Accepted: November 12, 2019