

RESEARCH ARTICLE

Open Access

Lack of association between Fas rs180082 polymorphism and risk of cervical cancer: an update by meta-analysis

Xu Chen¹, Wuning Mo^{1*}, Qiliu Peng¹ and Xiandu Su²

Abstract

Background: The Fas rs180082 polymorphism has been reported to be associated with cervical cancer susceptibility, yet the results of these previous results have been inconsistent or controversial. The objective of this study was to explore whether the Fas rs180082 polymorphism confers susceptibility to cervical cancer.

Methods: The relevant studies were identified through a search of PubMed, Excerpta Medica Database (Embase), Elsevier Science Direct and Chinese Biomedical Literature Database (CBM) until July 2012. The association between the Fas rs180082 polymorphism and cervical cancer risk was assessed by odds ratios (ORs) together with their 95% confidence intervals (CIs).

Results: A total of 7 case-control studies were eventually identified. We found no association between Fas rs180082 polymorphism and cervical cancer susceptibility in overall population (G versus A: OR = 1.03, 95% CI = 0.99-1.07, P = 0.197; AG + GG versus AA: OR = 1.04, 95% CI = 0.98-1.09, P = 0.176; GG versus AA + AG: OR = 1.04, 95% CI = 0.84-1.31, P = 0.701). In subgroup analysis, similar results were found in Asian (G versus A: OR = 1.06, 95% CI = 0.97-1.15, P = 0.195; AG + GG versus AA: OR = 1.08, 95% CI = 0.98-1.19, P = 0.176; GG versus AA + AG: OR = 0.97, 95% CI = 0.51-1.84, P = 0.935) and African (G versus A: OR = 1.01, 95% CI = 0.97-1.15, P = 0.195; AG + GG versus AA: OR = 0.99, 95% CI = 0.91-1.07, P = 0.739; GG versus AA + AG: OR = 1.09, 95% CI = 0.94-1.25, P = 0.745).

Conclusion: This meta-analysis has shown that there is a lack of association of the Fas rs180082 polymorphisms with cervical cancer susceptibility. However, larger scale primary studies with the consideration of gene-gene and gene-environment interactions are still required to further evaluate the interaction of Fas rs180082 polymorphism with cervical cancer susceptibility.

Keywords: Fas, Cervical cancer, Polymorphism, Meta-analysis

Background

In recent years, cervical cancer has been the second frequent women malignancy worldwide, with an estimated global incidence of 493,243 new cases and 273,505 deaths per year [1]. Therefore, it has been advanced and it is particularly necessary to explain the etiology of cervical cancer.

It is widely accepted that specific human papillomavirus (HPV) types are the central etiologic agent of cervical carcinogenesis. Other environmental and host

factors also play important roles in the persistence of HPV infection and further malignant conversion of cervical epithelium [2]. A number of previous studies had suggested that the possible correlation between genetic polymorphisms of cancer susceptibility genes and the higher risk of human malignant tumors [3,4].

One of the most important mechanisms for HPV infection control of human immune system is to induce apoptosis of HPV-infected cells [5]. Apoptosis is a physiological process and it depends on signals from the cell surface death receptor Fas, which cooperates with Fas ligand (FasL) to trigger programmed cell death [6]. Fas gene, which is mapped on chromosome 10q24.1, consists of nine exons and eight introns, is known as a

* Correspondence: mown163@163.com

¹Department of Clinical Laboratory, First Affiliated Hospital of Guangxi Medical University, 22 Shuangyong Road, Nanning 530021, Guangxi, People's Republic of China

Full list of author information is available at the end of the article

member of tumor necrosis factor (TNF) receptors superfamily [7]. Downregulation of Fas with resultant resistance to death signals has been reported in various cancers [8-10], including cervical cancer. Since Fas has an important role in cervical cancer, any mutations in the Fas gene affecting the production of Fas may be candidate risk factors for the development of this disease. Fas has several polymorphisms such as Fas rs2234767, Fas **rs180082** and FasL rs763110. In recent years, these polymorphisms have attracted widespread attention. However, the majority of studies focused on Fas **rs180082** polymorphism.

In particular, the important polymorphism of Fas, the A/G mutation at position -670 loci, has been intensively taken into account. Furthermore, the relationship between Fas **rs180082** polymorphism and cervical cancer risk has been observed in previous studies. Although a lot of studies had shown the possible involvement of Fas **rs180082** polymorphism in the pathogenesis of cervical cancer, the results were not always consistent. Most studies showed that there was a lack of association of Fas **rs180082** polymorphism with cervical cancer risk [11-15]. However, not all the studies achieve this result [16]. Furthermore, previous meta-analysis did not include African population, which may be not comprehensive and may cause some bias to the final result [17]. Therefore, to derive a more precise estimation of the association between Fas **rs180082** polymorphism and cervical cancer risk, we performed a meta-analysis of all eligible case-control studies in this article.

Methods

Search strategy selection criteria

We searched electronic databases PubMed, Excerpta Medica Database (Embase), Elsevier Science Direct and Chinese Biomedical Literature Database (CBM) updated on July 2012 for all publications on the association between Fas **rs180082** polymorphism and cervical cancer susceptibility. The search strategy was based on combinations using the Mesh terms as follows: ("Fas") in combination with ("polymorphism" or "polymorphisms" or "variant" or "SNP" or "mutation") in combination with ("cervical cancer" or "cervical carcinoma" or "uterine cervical neoplasm") for all publications on the association between Fas **rs180082** polymorphism and cervical cancer susceptibility. No language or country restrictions were applied. All eligible studies were retrieved, and their bibliographies were checked for other relevant publications. Review articles were also inspected to find additional eligible studies. For the use of these clinical materials for research purposes, prior consents from the patients and approval from the Ethics Committees of the First Affiliated Hospital of Guangxi Medical University were obtained.

Inclusion and exclusion criteria

Studies included in our meta analysis had to meet the following inclusion criteria: (a) a case-control study; (b) information on the evaluation of Fas **rs180082** polymorphisms and cervical cancer risk; (c) the papers must provide sufficient data including distribution of genotype and allele frequency; (d) when multiple publications reported on the same or overlapping data, we chose the most recent or largest population. Studies were excluded if one of the following existed: (a) studies that contained overlapping data; (b) Not offering the source of cases and controls or other essential information; (c) studies in which family members had been studied because their analysis are based on linkage considerations; (d) Reviews and repeated literature were also excluded.

Data extraction

Two investigators (Xu Chen and Wuning Mo) independently extracted the information with the standard protocol and the result was reviewed by a third investigator (Qiliu Peng). From each study, the information we extracted the name of first author, year of publication, country of origin, ethnicity of the population studied, the number of cases and controls, allele frequency, definition of cases, and genotype distribution in cases. Different ethnic descents were categorized as White, Asian, or African. For studies including subjects of different ethnic groups, data were extracted for ethnic group whenever possible.

Statistical analysis

Data were analyzed mainly using the STATA Software (version 9.0, Stata Corp). For each study, odds ratio (OR) and its 95% confidence interval (95% CI) were calculated to assess the association strength. Meta-analysis was performed for the polymorphisms that had been investigated in at least two studies. We examined the relationship between the allele, as well as genotypes and susceptibility to cervical cancer. The heterogeneity between the studies was assessed by the χ^2 -test based Q-statistic. A significant Q-statistic ($P < 0.10$) indicated heterogeneity among the studies, and so the summary OR estimate of each study was calculated by the random - effects model (DerSimonian and Laird method) [18]. Otherwise, the fixed-effects model (the Mantel-Haenszel method) was used [19]. We also measured the effect of heterogeneity by another measure, $I^2 = 100\% * (Q - df) / Q$ [20]. The I statistic measures the degree of inconsistency in the studies by calculating what percentage of the total variation across studies is due to heterogeneity rather than by chance [21]. The overall estimate of risk (OR) was calculated by a fixed effects model (Mantel-Haenszel) or a random effects model (DerSimonian-Laird) according to the presence ($P < 0.10$ or $I^2 > 50\%$)

or absence ($P > 0.10$ and $I^2 < 50\%$) of heterogeneity, respectively.

Publication bias was observed with the funnel plot [22] using the standard error of log (OR). An asymmetric plot infers a possible publication bias. Funnel plot asymmetry was further assessed by the method of Egger linear regression test. The significance of the intercept was determined by the Student t test suggested by Egger ($P < 0.05$ was considered representative of statistically significant publication bias).

Results

Eligible studies

Based on the search criteria, the literature search identified 17 related articles relevant to the role of the Fas **rs180082** polymorphism on cervical cancer susceptibility. Eleven of these articles were excluded: one of these articles was a review [23], one was an overlapped subject [24], one was not a case-control study [25], one did not focus on the locus that we study [26], two focused on the subjects that were not relevant to cervical cancer [27,28], two were not associated with the aim of our study [29,30], and three did not provide enough allele or genotyping data [31-33]. Manual search of references cited in the published studies did not reveal any additional articles. As a result, a total of 6 relevant studies met the inclusion criteria for the meta-analysis [11-16]. A flow diagram of the search process is shown in Figure 1. Therefore, a total of 7 separate case-control studies, consisting of 1,856 cervical cancer patients and 2,097

controls were included in our meta-analysis ([11] literature has two case-control studies). The selected study characteristics were listed in Table 1. There were 4 case-control studies of subjects of Asian descent [12-14,16], 2 case-control studies of subjects of African descent [11] and one case-control study of subject of White descent [15]. The genotype frequencies for control group in two studies were not consistent with Hardy-Weinberg equilibrium (HWE) [11,13].

Quantitative synthesis of data

Summary results of this meta-analysis for the association between Fas **rs180082** polymorphism and cervical cancer risk are shown in Table 2. The meta-analysis showed no association between cervical cancer and the Fas -670G allele in the overall population (OR=1.03, 95% CI=0.99-1.07, $P=0.197$; Figure 2). The overall OR for the GG+GA genotype of the Fas -670 was 1.04 in the overall population (95% CI=0.98-1.09, $P=0.176$). The overall OR for the GG genotype of the Fas -670 was 1.04 in the overall population (95% CI=0.84-1.31, $P=0.701$). Stratification by ethnicity revealed still no association of the G allele, and the GG and the GG + GA genotypes with cervical cancer in Asian and African (Table 2).

Sensitivity analysis

Although 2 studies [11,13] did not follow the HWE, the summary ORs were not effectively altered including or without including the studies. Moreover, no other single

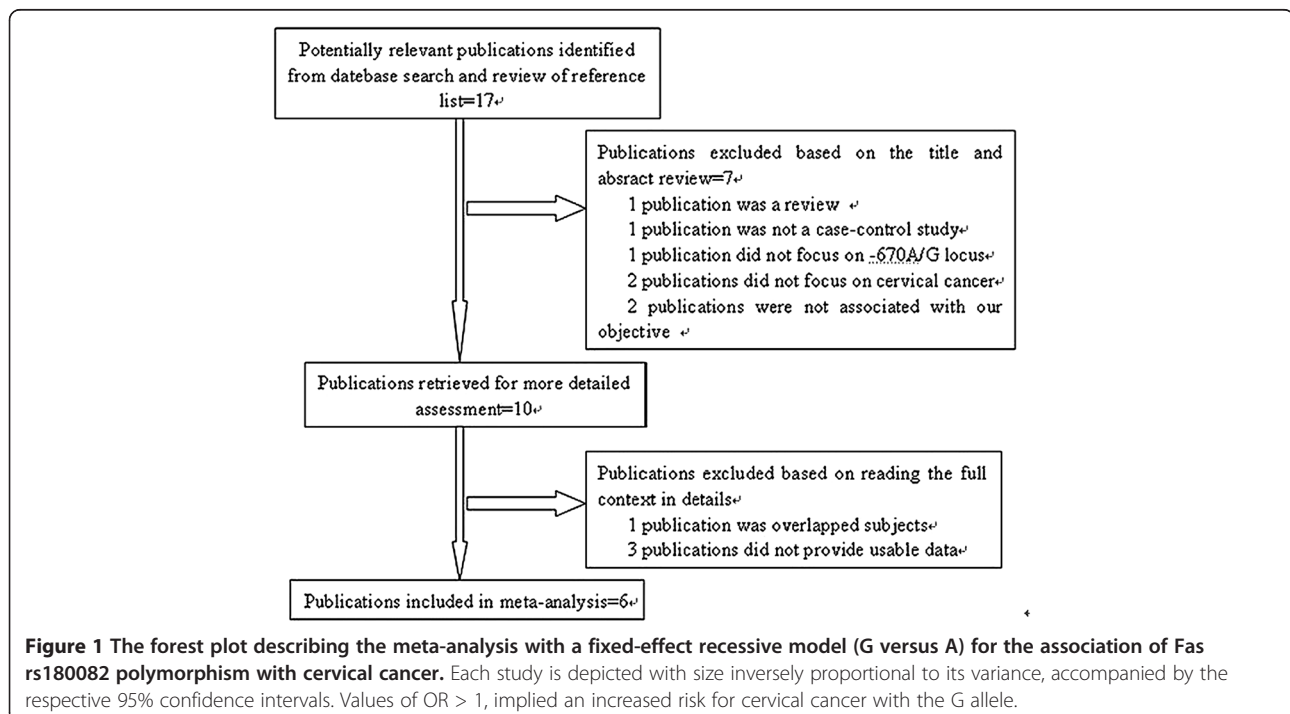


Table 1 Main characteristics of studies included in the meta-analysis

First author	Year	Country	Ethnicity	Genotyping method	Source of control	Cases/controls	HWE-control
Li H	2009	China	Asian	PCR-PFLP	HB	314/615	0.640
Kordi T	2008	India	Asian	PCR-PFLP	HB	200/200	0.000
Sokbom K	2007	South Korea	Asian	PCR-PFLP	HB	154/160	0.264
Ueda M	2006	Japan	Asian	PCR-PFLP	HB	83/95	0.172
Zoodma M	2005	Netherlands	White	Taq Man	PB	670/607	0.274
Kooshik C	2009	South Africa	African	Taq Man	HB	106/101	0.047
Kooshik C	2009	South Africa	African	Taq Man	HB	341/323	0.985

PCR-RFLP PCR-restriction fragment length polymorphism, HWE Hardy-Weinberg equilibrium, HB hospital based, PB population based.

study influenced the overall results qualitatively as indicated by sensitivity analysis.

Test of heterogeneity

There was significant heterogeneity for heterozygote comparison of dominant model comparison (GA+AA vs. GG: $P = 0.007$) and recessive model comparison (GG vs. GA+AA: $P = 0.001$). Then, we assessed the source of heterogeneity for heterozygote comparison (GA+AA vs. GG) by ethnicity. As a result, ethnicity ($\chi^2 = 14.41$; $df = 2$; $P = 0.001$) was found to contribute to substantial heterogeneity.

Publication bias

Begg funnel plot was created to assess the publication bias of literatures. As shown in Figure 3, the shapes of the funnel plots did not reveal any evidence of obvious asymmetry. Then, the Egger test was used to provide statistical evidence of funnel plot symmetry. The results still also suggested the absence of publication bias ($t=1.93$; $P=0.112$ for G vs. A).

Discussion

The alterations of apoptosis-related genes are probably contributing to malignant tumors, including cervical cancer [34]. Fas is an important apoptosis-related gene

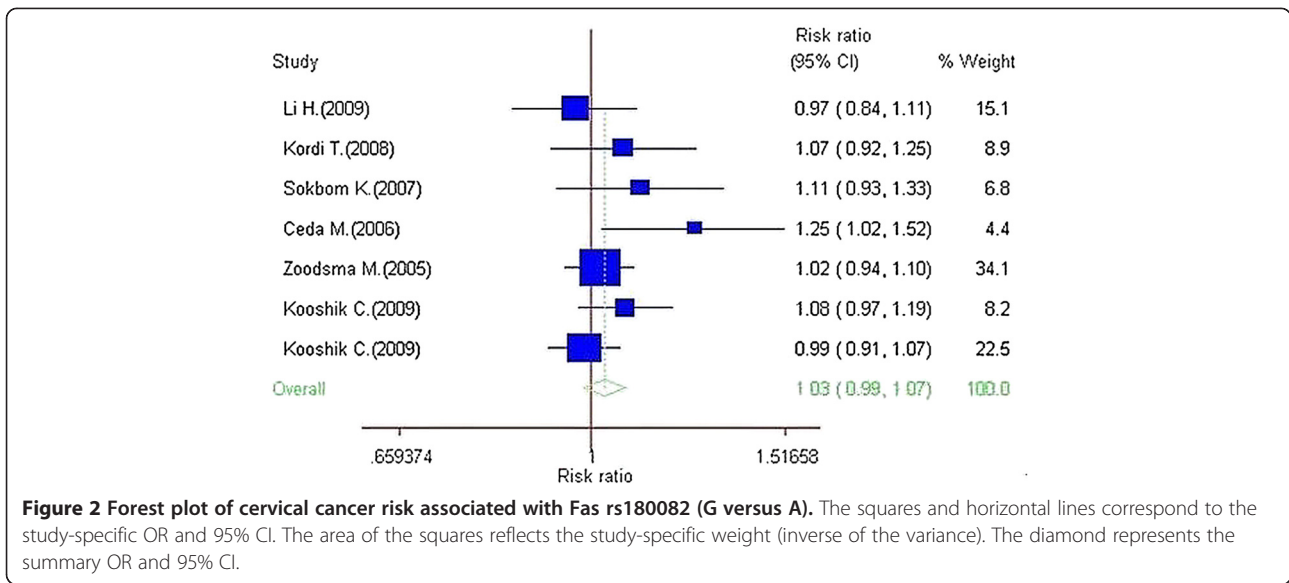
and known as a member of tumor necrosis factor (TNF) receptors superfamily [7]. Downregulation of Fas with resultant resistance to death signals has been reported in many cancers [23]. Furthermore, the transcript expression of Fas is modulated by genetic elements which located in the 5' upstream promoter region of the gene. SNP at -670 in the enhancer region (A/G) locates at a binding element of gamma interferon activation signal (GAS). Homozygous for G allele (GG) could lead to a complete deletion of the binding sequence of transcription element GAS, which is responsible for the signal emanated through STAT1, and in a significant alteration in the gene expression [35].

Although previous meta-analysis maybe involves some parts of the relationship between Fas rs180082 polymorphism and cervical cancer risk, its eligible studies are not quite comprehensive [17]. First, lack of the population of African, which leads to the decrease of studies and may cause a deviation to final result; second, some of the its eligible studies regard squamous cell carcinoma (SCC) or squamous intraepithelial lesion (SIL) as the cervical cancer [29,33]. However, SCC is just one pathological type of cervical cancer and SIL is just a stage in the pathological process of cervical cancer, which may also bring some bias. Therefore, we conduct an update by meta-analysis to comprehensively evaluate

Table 2 Results of meta-analysis for the Fas rs180082 polymorphism and cervical cancer risk

Comparison	Population	N	Sample size		Test of association			Mode	Test of heterogeneity		
			Case	Control	OR	95% CI	P		χ^2	P	I^2
G vs. A	Overall	7	3712	4194	1.03	0.99-1.07	0.197	F	7.38	0.288	18.6
	Asian	4	1502	2140	1.06	0.97-1.15	0.195	F	4.76	0.190	37.0
	African	2	870	840	1.01	0.95-1.08	0.776	F	1.88	0.170	46.9
GG+GA vs. AA	Overall	7	1856	2097	1.04	0.98-1.09	0.176	R	17.75	0.007	66.2
	Asian	4	751	1070	1.08	0.98-1.19	0.125	R	6.90	0.075	56.5
	African	2	435	420	0.99	0.91-1.07	0.739	R	5.65	0.017	82.3
GG vs. GA+AA	Overall	7	1856	2097	1.04	0.84-1.31	0.701	F	21.56	0.001	72.2
	Asian	4	751	1070	0.97	0.51-1.84	0.935	R	18.34	0.000	83.6
	African	2	435	420	1.09	0.94-1.25	0.245	F	0.82	0.364	0.0

OR odds ratio, CI confidence interval, F fixed effects model, R random effects model.



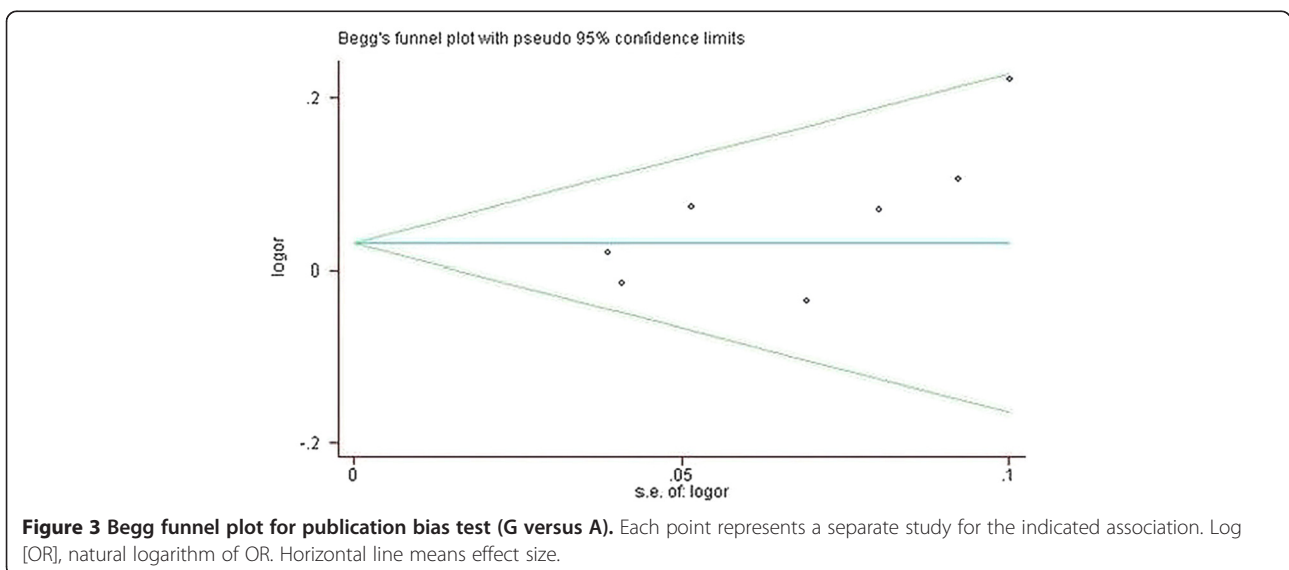
the association between **rs180082** polymorphism and cervical cancer risk. This update meta-analysis includes seven latest case-control studies, five of which are published in recent 5 years. Despite the number of eligible studies in this meta-analysis is still infinite, all the studies included in this meta-analysis, which are based on stricter search criteria, are more reliable and lead to a more accurate result.

As for cervical cancer risk, the previous results of the studies involving Fas **rs180082** polymorphism were contradictory. These inconsistent results were possibly due to small effect of the polymorphism on cervical cancer risk or the relatively low statistical power of the published studies. Consequently, the meta-analysis was needed to provide a quantitative approach for combining

the results of various studies with the same topic and for estimating and explaining their diversity.

So far, the number of the studies that focus on the relationship between Fas **rs180082** polymorphism and cancer risk is limited. Some studies before had shown that there was an association between Fas **rs180082** and some cancers, including nasopharyngeal carcinoma [36], lung cancer [37,38], gastric cancer [39] and leukemia [40]. Otherwise, some studies draw a different conclusion [41].

The studies included in our meta-analysis may differ in some aspects. Koushik, et al. conducted the first African population study with 447 women with invasive cervical cancer and 424 healthy women controls [11]. Li, et al. conducted the study with 314 women of cervical cancer



and 615 healthy women controls in South China [12]. Kordi, et al. conducted the first study in North India [13]. Zoodsma, et al. and Kang, et al. conducted the same study in Netherland and South Korea [14,15]. All of them did not find any significant association between Fas **rs180082** polymorphism and cervical cancer susceptibility. However, Ueda, et al. found that polymorphism of Fas gene promoter -670 may be associated with the risk of cervical cancer in a Japanese population. It should be pointed out that the study which focused on Japanese population is based on small sample size (<200 subjects), so that we should be cautious to the result of this study. Consequently, our data failed to find a relationship between Fas **rs180082** polymorphism and cervical cancer risk. The present meta-analysis, which included 1856 cases of cervical cancer and 2097 controls, suggested that there was no association between Fas **rs180082** polymorphism and cervical cancer susceptibility.

Considering the results may be due to different ethnicity, we further conducted subgroup analysis according to ethnicity. When stratifying for ethnicity, significant association was detected in neither Asian populations nor African populations, suggesting that the genetic background or environment they live in may not influence the Fas **rs180082** polymorphism on cervical cancer susceptibility. However, the conclusion should be cautious. Because the sample size of studies included in our meta-analysis is relatively small, especially in the African population. Our results may be underpowered so that further studies need to be conducted to increase the statistical power. The genetic distance between different ethnicities considered together could be substantial. It is not excluded that true effects are present in one specific sub-population, but undetected due to lack of statistical power or diluted/cancelled out by population stratification issues when different study populations are grouped together for analysis.

Some limitations of this meta-analysis we need to pay attention to. First, our results are based on unadjusted estimates and a more precise analysis stratified by age, different lifestyle related habits and different grades of cervical cancer could be performed if individual data were available. Second, lack of the original data of the reviewed studies limited our precise estimation of the relation, which might cause some bias. Third, the lack of original study limited our further evaluation of potential interactions because the interactions between gene-environment interactions may modulate cancer risk.

Despite these limitations or disadvantages, our meta-analysis still had some advantages. First, a systematic review of the association of Fas **rs180082** polymorphism with cervical cancer risk is statistically more powerful than any single study. Second, the studies retrieved were the latest, half of which were published in the recent

3 years. Third, the quality of case-control studies included in our Meta analysis was satisfactory and met our inclusion criteria.

Conclusions

In summary, the present meta-analysis provides information that there is a lack of association of the Fas **rs180082** polymorphisms with cervical cancer. However, larger scale primary studies with the consideration of gene-gene and gene-environment interactions are still required to further evaluate the interaction of Fas **rs180082** polymorphism with cervical cancer susceptibility.

Competing interests

In the past five years we did not receive any reimbursements, fees, funding, or salary from an organization that may in any way gain or lose financially from the publication of this manuscript. We do not hold any stocks or shares in an organization that may in any way gain or lose financially from the publication of this manuscript. We do not hold and we are not currently applying for any patents relating to the content of the manuscript. We do not receive reimbursements, fees, funding, or salary from an organization that holds or has applied for patents relating to the content of the manuscript. There are no any non-financial competing interests (political, personal, religious, ideological, academic, intellectual, commercial or any other) to declare in relation to this manuscript.

Authors' contributions

XC collected the literature data, developed the statistical model, carried out the software implementation and drafted the manuscript. QP collected the literature data, read the full text articles, and checked the model and results. XS collected the literature data and read the full text articles. WM helped with the discussion both in the theoretical development and English copyediting. All authors read and approved the final manuscript.

Acknowledgements

This study has been supported by some students in study design, acquisition of data and searching background information relevant to our study. We would like to thank them for their help which have led to improvement of this article.

Author details

¹Department of Clinical Laboratory, First Affiliated Hospital of Guangxi Medical University, 22 Shuangyong Road, Nanning 530021, Guangxi, People's Republic of China. ²Department of Clinical Laboratory, Nongken Nada Hospital, Nada 571700Hainan, People's Republic of China.

Received: 18 August 2012 Accepted: 7 July 2013

Published: 16 July 2013

References

1. Walboomers JM, Jacobs MV, Manos MM, Bosch FX, Kummer JA, Shah KV, Snijders PJ, Peto J, Meijer CJ, Muñoz N, et al: **Human papillomavirus is a necessary cause of invasive cervical cancer worldwide.** *J Pathol* 1999, **189**(1):12-19.
2. Hausen HZ: **Papillomaviruses causing cancer: evasion from host-cell control in early events in carcinogenesis.** *J Natl Cancer Inst* 2000, **92**(9):690-698.
3. Ueda M, Hung YC, Terai Y, Kanda K, Takehara M, Yamashita H, Yamaguchi H, Akise D, Yasuda M, Nishiyama K, et al: **Glutathione S-transferase GSTM1, GSTT1 and p53 codon 72 polymorphisms in human tumor cells.** *Hum Cell* 2003, **16**(4):241-251.
4. Tsigris C, Chatzitheofylaktou A, Xiromeritis C, Nikiteas N, Yannopoulos A: **Genetic association studies in digestive system malignancies.** *Anticancer Res* 2007, **27**(5):3577-3587.
5. Dockrell DH: **Apoptotic cell death in the pathogenesis of infectious diseases.** *J Infect* 2001, **42**:227-234.
6. Zhang J, Xu X, Liu Y: **Activation-induced cell death in T cells and autoimmunity.** *Cell Mol Immunol* 2004, **1**:186-192.

7. Nagata S: Apoptosis by death factor. *Cell* 1997, **88**(3):355–365.
8. Butler LM, Hewett PJ, Butler WJ, Cowled PA: Down-regulation of Fas gene expression in colon cancer is not a result of allelic loss or gene rearrangement. *Br J Cancer* 1998, **77**(9):1454–1459.
9. Lee SH, Shin MS, Park WS, Kim SY, Dong SM, Pi JH, Lee HK, Kim HS, Jang JJ, Kim CS, et al: Alterations of Fas(APO-1/CD95) gene in transitional cell carcinomas of urinary bladder. *Cancer Res* 1999, **59**(13):3068–3072.
10. Shimomishi T, Isse K, Shibata F, Aburatani I, Tsuneyama K, Sabit H, Harada K, Miyazaki K, Nakanuma Y: Up-regulation of fas ligand at early stages and down-regulation of Fas at progressed stages of intrahepatic cholangiocarcinoma reflect evasion from immune surveillance. *Hepatology* 2000, **32**(4):761–769.
11. Chatterjee K, Engelmark M, Gyllensten U, Dandara C, van der Merwe L, Galal U, Hoffman M, Williamson AL, et al: Fas and FasL gene polymorphisms are not associated with cervical cancer but differ among Black and Mixed-ancestry South Africans. *BMC Res Notes* 2009, **2**:238.
12. Li H, Guo HY, Sun T, Zhou YF, Lin DX, Zhang WH, Qiao J: Association between Fas/Fas L genes promoter polymorphisms and pathogenic risk of cervical cancer. *Zhonghua Zhong Liu Za Zhi* 2009, **31**(1):38–41.
13. Kordi Tamandani DM, Sobti RC, Shekari M: Association of Fas-670 gene polymorphism with risk of cervical cancer in North Indian population. *Clin Exp Obstet Gynecol* 2008, **35**(3):183–186.
14. Kang S, Dong SM, Seo SS, Kim JW, Park SY: Fas -1377 A/G polymorphism and the risk of lymph node metastasis in cervical cancer. *Cancer Genet Cytogenet* 2008, **180**(1):1–5.
15. Zoodsma M, Nolte IM, Schipper M, Oosterom E, van der Steege G, de Vries EG, Te Meerman GJ, van der Zee AG: Interleukin-10 and Fas polymorphisms and susceptibility for (pre)neoplastic cervical disease. *Int J Gynecol Cancer* 2005, **15**:282–290.
16. Ueda M, Terai Y, Kanda K, Kanemura M, Takehara M, Yamaguchi H, Nishiyama K, Yasuda M, Ueki M: Fas gene promoter -670 polymorphism in gynecological cancer. *Int J Gynecol Cancer* 2006, **16**:179–182.
17. Zhang Z, Xue H, Gong W, Wang M, Yuan L, Han S, Zhang Z: Fas promoter polymorphisms and cancer risk: a meta-analysis based on 34 case-control studies. *Carcinogenesis* 2009, **30**(3):487–493.
18. Mantel N, Haenszel W: Statistical aspects of the analysis of data from retrospective studies of disease. *J Natl Cancer Inst* 1959, **22**(4):719–748.
19. DerSimonian R, Laird N: Meta-analysis in clinical trials. *Control Clin Trials* 1986, **7**(3):177–188.
20. Higgins JP, Thompson SG: Quantifying heterogeneity in a meta-analysis. *Stat Med* 2002, **21**(11):1539–1558.
21. Higgins JP, Thompson SG, Deeks JJ, Altman DG: Measuring inconsistency in meta-analyses. *BMJ* 2003, **327**(7414):557–560.
22. Munafò MR, Clark TG, Flint J: Assessing publication bias in genetic association studies: evidence from a recent meta-analysis. *Psychiatry Res* 2004, **129**(1):39–44.
23. Nunobiki O, Ueda M, Toji E, Yamamoto M, Akashi K, Sato N, Izuma S, Torii K, Tanaka I, Okamoto Y, et al: Genetic polymorphism of cancer susceptibility genes and HPV infection in cervical carcinogenesis. *Pathol Res Int* 1999, **189**:12–19.
24. Sun T, Zhou Y, Li H, Han X, Shi Y, Wang L, Miao X, Tan W, Zhao D, Zhang X, et al: FasL -844C polymorphism is associated with increased activation-induced T cell death and risk of cervical cancer. *J Exp Med* 2005, **202**(7):967–974.
25. Engelmark MT, Renkema KY, Gyllensten UB: No evidence of the involvement of the Fas -670 promoter polymorphism in cervical cancer in situ. *Int J Cancer* 2004, **112**(6):1084–1085.
26. Ivansson EL, Gustavsson IM, Magnusson JJ, Steiner LL, Magnusson PK, Erlich HA, Gyllensten UB: Variants of chemokine receptor 2 and interleukin 4 receptor, but not interleukin 10 or Fas ligand, increase risk of cervical cancer. *Int J Cancer* 2007, **121**(11):2451–2457.
27. Lai HC, Lin WY, Lin YW, Chang CC, Yu MH, Chen CC, Chu TY: Genetic polymorphisms of FAS and FasL (CD95/CD95L) genes in cervical carcinogenesis: An analysis of haplotype and gene-gene interaction. *Gynecol Oncol* 2005, **99**(1):113–118.
28. Lai HC, Sytwu HK, Sun CA, Yu MH, Yu CP, Liu HS, Chang CC, Chu TY: Single nucleotide polymorphism at Fas promoter is associated with cervical carcinogenesis. *Int J Cancer* 2003, **103**(2):221–225.
29. Guzman VB, Yambartsev A, Goncalves-Primo A, Silva ID, Carvalho CR, Ribalta JC, Goulart LR, Shulzhenko N, Gerbase-Delima M, Morgun A, et al: New approach reveals CD28 and IFNG gene interaction in the susceptibility to cervical cancer. *Hum Mol Genet* 2008, **17**(12):1838–1844.
30. Ueda M, Hung YC, Terai Y, Yamaguchi H, Saito J, Nunobiki O, Noda S, Ueki M: Fas gene promoter -670 polymorphism (A/G) is associated with cervical carcinogenesis. *Gynecol Oncol* 2005, **98**(1):129–133.
31. Zucchi F, da Silva ID, Ribalta JC, de Souza NC, Speck NM, Girão MJ, Brenna SM, Syrjänen KJ: Fas/CD95 promoter polymorphism gene and its relationship with cervical carcinoma. *Eur J Gynaecol Oncol* 2009, **30**(2):142–144.
32. Dybikowska A, Sliwinski W, Emerich J, Podhajska AJ: Evaluation of Fas gene promoter polymorphism in cervical cancer patients. *Int J Mol Med* 2004, **14**(3):475–478.
33. Lerma E, Romero M, Gallardo A, Pons C, Muñoz J, Fuentes J, Lloveras B, Catusas L, Prat J: Prognostic significance of the Fas-receptor/Fas-ligand system in cervical squamous cell carcinoma. *Virchows Arch* 2008, **452**(1):65–74.
34. Zörnig M, Hueber A, Baum W, Evan G: Apoptosis regulators and their role in tumorigenesis. *Biochim Biophys Acta* 2001, **1551**(2):F1–F37.
35. Kanemitsu S, Ihara K, Saifuddin A, Otsuka T, Takeuchi T, Nagayama J, Kuwano M, Hara T: A functional polymorphism in fas (CD95/APO-1) gene promoter associated with systemic lupus erythematosus. *J Rheumatol* 2002, **29**(6):1183–1188.
36. Zhu Q, Wang T, Ren J, Hu K, Liu W, Wu G: Fas -670A/G polymorphism: a biomarker for the metastasis of nasopharyngeal carcinoma in a Chinese population. *Clin Chim Acta* 2010, **411**(3–4):179–183.
37. Park JY, Lee WK, Jung DK, Choi JE, Park TI, Lee EB, Cho S, Park JY, Cha SI, Kim CH, et al: Polymorphisms in the Fas and FasL genes and survival of early stage non-small cell lung cancer. *Clin Cancer Res* 2009, **15**(5):1794–1800.
38. Wang LE, Cheng L, Spitz MR, Wei Q: Fas A670G polymorphism, apoptotic capacity in lymphocyte cultures, and risk of lung cancer. *Lung Cancer* 2003, **42**(1):1–8.
39. Zhou RM, Wang N, Chen ZF, Duan YN, Sun DL, Li Y: Polymorphisms in promoter region of FAS and FasL gene and risk of cardia gastric adenocarcinoma. *J Gastroenterol Hepatol* 2010, **25**(3):555–561.
40. Farre L, Bittencourt AL, Silva-Santos G, Almeida A, Silva AC, Decanine D, Soares GM, Alcantara LC Jr, Van Dooren S, Galvão-Castro B, et al: Fas 670 promoter polymorphism is associated to susceptibility, clinical presentation, and survival in adult T cell leukemia. *J Leukoc Biol* 2008, **83**(1):220–222.
41. Hu Y, Xu Y, Wang Y, Ouyang T, Li JF, Wang TF, Fan ZQ, Fan T, Lin BY, Cheng PL, et al: Prognostic role of apoptosis-related gene Fas-1377 and -670 polymorphisms in breast cancer. *Zhonghua Zhong Liu Za Zhi* 2009, **31**(2):104–107.

doi:10.1186/1471-2350-14-71

Cite this article as: Chen et al: Lack of association between Fas rs180082 polymorphism and risk of cervical cancer: an update by meta-analysis. *BMC Medical Genetics* 2013 **14**:71.

Submit your next manuscript to BioMed Central and take full advantage of:

- Convenient online submission
- Thorough peer review
- No space constraints or color figure charges
- Immediate publication on acceptance
- Inclusion in PubMed, CAS, Scopus and Google Scholar
- Research which is freely available for redistribution

Submit your manuscript at
www.biomedcentral.com/submit

