


SYSTEMATIC REVIEW UPDATE

Open Access



Carotid endarterectomy with patch angioplasty versus primary closure in patients with symptomatic and significant stenosis: a systematic review with meta-analyses and trial sequential analysis of randomized clinical trials

Martijn S. Marsman^{1*} , Jørn Wetterslev², Abdelkarime Kh. Jahrome³, Christian Gluud^{2,4}, Frans L. Moll⁵, Frederik Keus⁶ and Giel G. Koning⁷

Abstract

Background: Patch angioplasty in conventional carotid endarterectomy is suggested to reduce the risk of restenosis and recurrent ipsilateral stroke compared with primary closure. A systematic review of randomized clinical trials is needed to compare outcomes (benefits and harms) of both techniques.

Methods: Searches (CENTRAL, PubMed/MEDLINE, EMBASE, and other databases) were last updated 3rd of January 2021. We included randomized clinical trials comparing carotid endarterectomy with patch angioplasty versus primary closure of the arterial wall in patients with a symptomatic and significant (> 50%) carotid stenosis. Primary outcomes are defined as all-cause mortality and serious adverse events.

Results: We included 12 randomized clinical trials including 2187 participants who underwent 2335 operations for carotid stenosis comparing carotid endarterectomy with patch closure (1280 operations) versus carotid endarterectomy with primary closure (1055 operations). Meta-analysis comparing carotid endarterectomy with patch angioplasty versus carotid endarterectomy with primary closure may potentially decrease the number of patients with all-cause mortality (RR 0.53; 95% CI 0.26 to 1.08; $p = 0.08$, best-case scenario for patch), serious adverse events (RR 0.73; 95% CI 0.56 to 0.96; $p = 0.02$, best-case scenario for patch), and the number of restenosis (RR 0.41; 95% CI 0.23 to 0.71; $p < 0.01$). Trial sequential analysis demonstrated that the required information sizes were far from being reached for these patient-important outcomes. All the patient-relevant outcomes were at low certainty of evidence according to The Grading of Recommendations Assessment, Development, and Evaluation.

(Continued on next page)

* Correspondence: mmarsman@rijnstate.nl

¹Department of Vascular Surgery, Rijnstate Hospital, Wagnerlaan 55, 6815 AD Arnhem, the Netherlands

Full list of author information is available at the end of the article



© The Author(s). 2021 **Open Access** This article is licensed under a Creative Commons Attribution 4.0 International License, which permits use, sharing, adaptation, distribution and reproduction in any medium or format, as long as you give appropriate credit to the original author(s) and the source, provide a link to the Creative Commons licence, and indicate if changes were made. The images or other third party material in this article are included in the article's Creative Commons licence, unless indicated otherwise in a credit line to the material. If material is not included in the article's Creative Commons licence and your intended use is not permitted by statutory regulation or exceeds the permitted use, you will need to obtain permission directly from the copyright holder. To view a copy of this licence, visit <http://creativecommons.org/licenses/by/4.0/>. The Creative Commons Public Domain Dedication waiver (<http://creativecommons.org/publicdomain/zero/1.0/>) applies to the data made available in this article, unless otherwise stated in a credit line to the data.

(Continued from previous page)

Conclusions: This systematic review showed no conclusive evidence of a difference between carotid endarterectomy with patch angioplasty versus primary closure of the arterial wall on all-cause mortality, < 30 days mortality, < 30 days stroke, or any other serious adverse events. These conclusions are based on data from 15 to 35 years ago, obtained in trials with very low certainty according to GRADE, and should be interpreted cautiously. Therefore, we suggest conducting new randomized clinical trials patch angioplasty versus primary closure in carotid endarterectomy in symptomatic patients with an internal carotid artery stenosis of 50% or more. Such trials ought to be designed according to the Standard Protocol Items: Recommendations for Interventional Trials statement (Chan et al., *Ann Intern Med* 1:200–7, 2013) and reported according to the Consolidated Standards of Reporting Trials statement (Schulz et al., 7, 2010). Until conclusive evidence is obtained, the standard of care according to guidelines should not be abandoned.

Systematic review registration: PROSPERO [CRD42014013416](https://doi.org/10.1136/bmjopen-2018-026419). Review protocol publication 2019 DOI: <https://doi.org/10.1136/bmjopen-2018-026419>.

Keywords: Carotid stenosis, Carotid endarterectomy, Patch, Systematic review, Primary closure, Trial sequential analysis, GRADE

Background

Carotid artery stenosis occurs due to atherosclerosis and was described to be a pathologic substrate for ischemic diseases of the ipsilateral brain and eye by C. Miller Fisher in 1951 [1]. The preventive management of asymptomatic carotid artery stenosis is well known, including antiplatelet therapy, statins, antihypertensive medication, diabetic control, and lifestyle modifications [2–4]. Carotid endarterectomy (CEA) is the preferred guideline treatment for patients with symptomatic and > 50% stenosis of the internal carotid artery [5], based primarily on the European Carotid Surgery Trial (ECST) and the North American Symptomatic Carotid Endarterectomy Trial (NASCET) [6–8].

Restenosis after CEA occurs in 6 to 36% of patients during follow-up of 12 months or more [9–13]. Two operative techniques are well known in literature: the eversion technique and the traditional (or conventional) carotid endarterectomy (CEA) using a longitudinal arteriotomy. Closure of the arterial wall in CEA can be achieved by either patch angioplasty or direct suturing of the arterial wall (Fig. 1a–c) [14]. Use of patch angioplasty in CEA is suggested to reduce both the risks of restenosis and recurrent ipsilateral stroke [15].

Guidelines of both the European Society of Vascular Surgery (ESVS) and the Dutch Society for Vascular Surgery (NVvV) consider CEA with patch angioplasty the recommended technique in patients with a severe (> 50%) and symptomatic stenosis. For asymptomatic patients with an “average surgical risk” and a 60 to 99% stenosis, CEA should be considered in the presence of one or more imaging characteristics that may be associated with an increased risk of late ipsilateral stroke [8, 16, 17]. A meta-analysis of ten randomized clinical trials (RCTs) including 2157 procedures in 1967 patients compared CEA with patch angioplasty versus CEA with primary closure of the arterial wall and concluded that the former may reduce the risks of restenosis, perioperative arterial occlusion, and ipsilateral stroke [15]. However,

the observed differences in intervention effects may or may not be affected by confounding factors and/or differential use of co-interventions, such as the use of perioperative transcranial Doppler monitoring, perioperative carotid pressure measurement, electroencephalographic monitoring, selected use of shunting, regional anesthesia, and variations in materials used for patching [18–25]. Furthermore, patch angioplasty is not fully accepted by surgeons and several large observational studies failed to find improved outcomes in comparison to primary closure [26–29].

To determine which technique offers superiority of outcomes (e.g., less postoperative (< 30 days) mortality and postoperative (< 30 days) stroke) for patients with a symptomatic stenosis of the internal carotid artery > 50%, it is important that all available evidence is evaluated in a systematic review in accordance with the Cochrane Handbook for Systematic Reviews of Interventions [30, 31]. Therefore, an updated systematic review with meta-analyses is needed. To confirm or reject the meta-analysis results, we used trial sequential analysis (TSA) [32]. This review evaluates the current available evidence and assesses if this evidence is solid enough to base our current practice on it, while taking into consideration the changes in recent years (e.g., best medical treatment, use of ultrasound, centralization, and patch material).

Why is this systematic review needed?

To date, all reviews suggest patch angioplasty to be superior to primary closure, but it has not been unequivocally proven [33, 34]. Solid recommendations are needed for future research to guide clinical practice.

Strengths and limitations of this study

- This review was conducted according to the published protocol following the recommendations of Cochrane and reported according to the Preferred

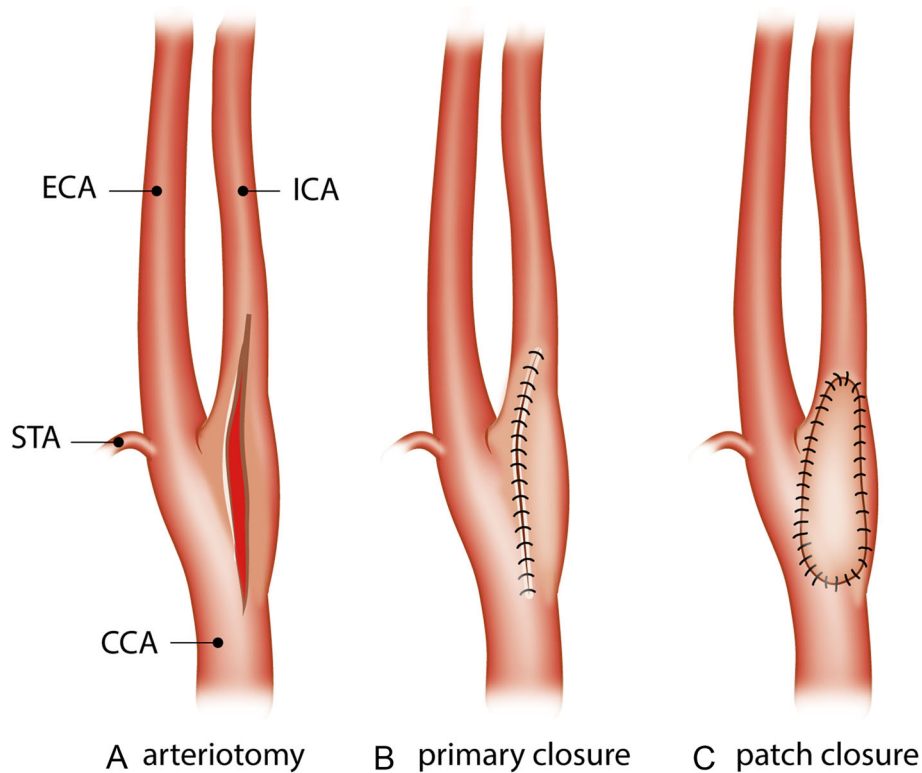


Fig. 1 Closure of carotid artery. CCA: common carotid artery, STA: superior thyroid artery, ECA: external carotid artery, ICA: internal carotid artery. **a** Longitudinal arteriotomy. **b** Primary closure of longitudinal arteriotomy. **c** Closure of longitudinal arteriotomy with patch angioplasty

Reporting Items for Systematic Reviews and Meta-Analyses (PRISMA statement).

- Trial sequential analysis and Grading of Recommendations Assessment, Development and Evaluation (GRADE) assessments of randomized clinical trials are conducted.
- This review benefits from a comprehensive search strategy, designed to retrieve a broad spectrum of relevant randomized clinical trials for the research question.
- To avoid confounding, **one** technique was compared to **one** other operative technique.

Methods

This review was conducted according to the published protocol in *BMJ Open* [32] (see Supplementary file 4). The protocol was registered in PROSPERO in 2014, and this protocol was updated in October 2018 (CRD42014013416) following the recommendations of the “Cochrane Handbook for Systematic Reviews of Interventions” [30] and was reported according to the Preferred Reporting Items for Systematic Reviews and Meta-Analyses (PRISMA) statement [35]. The overall search was last updated on the 3rd of January 2021.

Studies

Only RCTs comparing CEA with patch angioplasty (regardless of used patch materials) versus CEA with primary closure of the arterial wall were included.

Patients

According to the current guidelines, patients with a symptomatic stenosis > 50% (measured by ultrasound duplex, computed tomographic angiography, or magnetic resonance angiography) of the internal carotid artery were considered [6–8].

Experimental intervention

The experimental intervention was CEA with patch angioplasty regardless of the type of patch material used (Fig. 1c) [14].

Control intervention

The control intervention (Fig. 1b) was traditional CEA (with longitudinal arteriotomy, Fig. 1a) with primary closure of the arterial wall [14]. RCTs that compared the eversion technique versus carotid endarterectomy with patch angioplasty were excluded [36]. The reason for excluding the eversion technique is because it is a completely different technique. When performing the eversion technique,

the internal carotid artery (ICA) is cut loose from the common carotid artery (CCA). After removing the atherosclerotic plaque, the ICA will be reinserted at the CCA. Eversion technique is a non-patch technique.

In this review, patch closure (experimental group) is compared with primary closure (control group). Both techniques start with an arteriotomy of the internal carotid artery. After removing the plaque, the ICA can be closed directly (with sutures); this is called primary closure. The ICA can also be closed with a patch (which is sutured); this is called patch closure (Fig. 1).

Outcomes

The outcome measures were graded from the patients’ perspective (GRADE Working Group 2008, Fig. 2) [37]. The authors graded these aspects from the patients’ perspective. This assumption will be checked in a patient focus group discussion. The number of patients with one or more complications was assessed rather than the number of events, depending on the availability of data (to reduce the risk for double counting).

Primary outcomes

- All-cause mortality
- Proportion of participants with one or more serious adverse events: any untoward medical occurrence that results in death, is life-threatening, requires hospitalization or prolongation of existing

hospitalization, results in persistent or significant disability or incapacity [38]

- Health-related quality of life: any scale used by trialists to assess the participants’ reporting of their quality of life (or health status)

Secondary outcomes

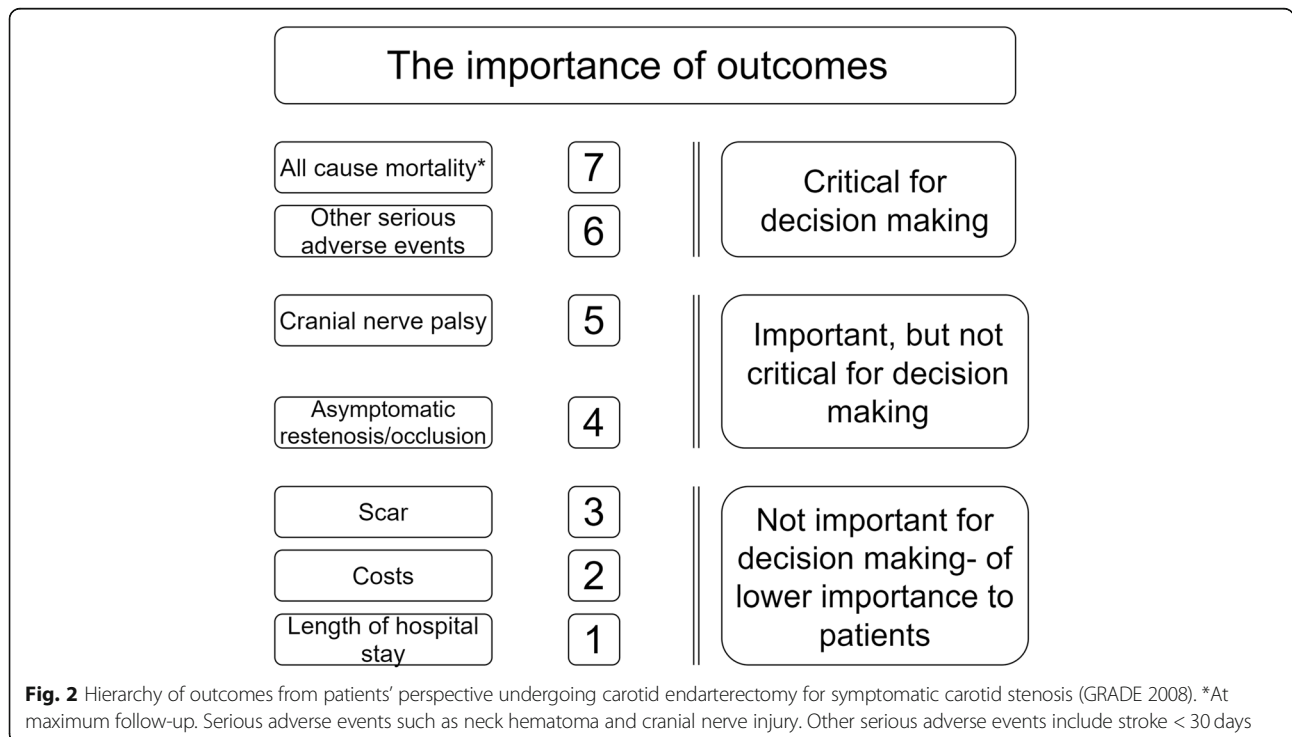
- Symptomatic or asymptomatic arterial occlusion or restenosis (50 to 99%)
- Proportion of participants with one or more non-serious adverse events: any untoward medical occurrence in a participant who did not meet the above criteria for a serious adverse event was defined as a non-serious adverse event [38]

Exploratory outcomes

- Separately reported serious adverse events
- Separately reported non-serious adverse events
- Postoperative stroke rate (< 30 days)

Search strategy

The Cochrane Central Register of Controlled Trials (CENTRAL) in The Cochrane Library, PubMed/MEDLINE, EMBASE, and other databases were searched (other databases are summed up in Fig. 3). References of the identified trials were searched to identify any further relevant RCTs. We also searched online trial registries [32]. The search strategy is added as supplementary file 1.



Data collection

Two authors (MSM and GGK) independently performed screening and selected the trials for inclusion. Excluded trials and studies were listed with their reasons for exclusion. When disagreements occurred, a third author (JW and/or CG) was approached to reconcile. If there was any unclear or missing data, the corresponding authors of the individual trials were contacted at least twice.

Risk of bias assessment

Two authors (MSM and GGK) assessed the risks of bias, without masking for trial names, according to the Cochrane Handbook for Systematic Reviews of Interventions as described in the published protocol [30, 32].

Differences between the protocol and this paper

We interchanged the control and experimental interventions after careful considerations within the author group. In our protocol, primary closure is stated as the experimental intervention and patch closure as the control intervention. We recognized the need for this change as the primary closure technique was first known, and patch closure technique was developed later. Critical reviewing from non-involved vascular experts made us adapt the description of the outcomes. These added outcomes (<30-day stroke and <30-day mortality rate) are considered critical for decision making from the patients' perspective and were therefore added as exploratory outcomes to this paper. All participants in the trials were investigated, and all patients with one or more strokes were scored in the outcome serious adverse events. Not all trials reported a number of patients with one or more complications or a number of patients in each intervention group; therefore, meta-analysis is done at the number of surgeries instead of number of patients. In this scenario, the number of surgeries was counted, hereby underestimating the proportion of having a complication. An addendum was made in this paper for the legend of Fig. 2 compared to the protocol. In the protocol, it may look like stroke was considered not to be critical for decision making from patients' perspective; nevertheless, it is critical for decision making. Also the degree of stenosis at a threshold of 70% for symptomatic patients was changed into 50% according to the latest expert consensus and common daily practice. The overall search was repeated on the 3rd of January 2021. The degree of stenosis of each patient was not explicitly specified in each trial. This lack of data and the very low response from the corresponding authors after several requests resulted in an undefined mix of symptomatic and asymptomatic patients. Additional screening using the Risk of Bias 2 [39] did not reveal any new insights, and all trials were considered at high risk of bias.

Statistical methods and trial sequential analyses

Meta-analyses were performed according to the Cochrane Handbook for Systematic Reviews of Interventions [30]. The software package Review Manager (RevMan) version 5.3 was used [40]. Significance levels were adjusted due to multiplicity of several outcomes. The results of each outcome were determinative for the use of the intervention and require an adjusted statistical significance level (threshold). An alpha of $0.05 / (1 + 3) / 2 = 0.025$ was planned to use for the primary outcomes to keep the family wise error rate (FWER) < 0.05. Because health-related quality of life was not analyzed, we chose to adjust maximal type I error for each analyzed outcome to 0.033% to preserve a FWER of 0.05. For the secondary outcomes, the alpha was also 0.033 [41, 42]. For exploratory outcomes, we considered a *p* value < 0.05 as significant, because we viewed these outcomes as only hypothesis-generating outcomes. For dichotomous variables, the risk ratio with 95% confidence interval (CI) was calculated. For continuous variables, the mean difference (MD) or the standardized mean difference with 95% CI were calculated.

Meta-analyses may result in type-I errors and type-II errors due to an increased risk of random error when sparse data are analyzed and due to repeated significance testing when a cumulative meta-analysis is updated with new trials [43, 44]. To assess the risk of type-I and type-II errors, TSA was used. Detailed TSA description has been published in the protocol [32, 43–45].

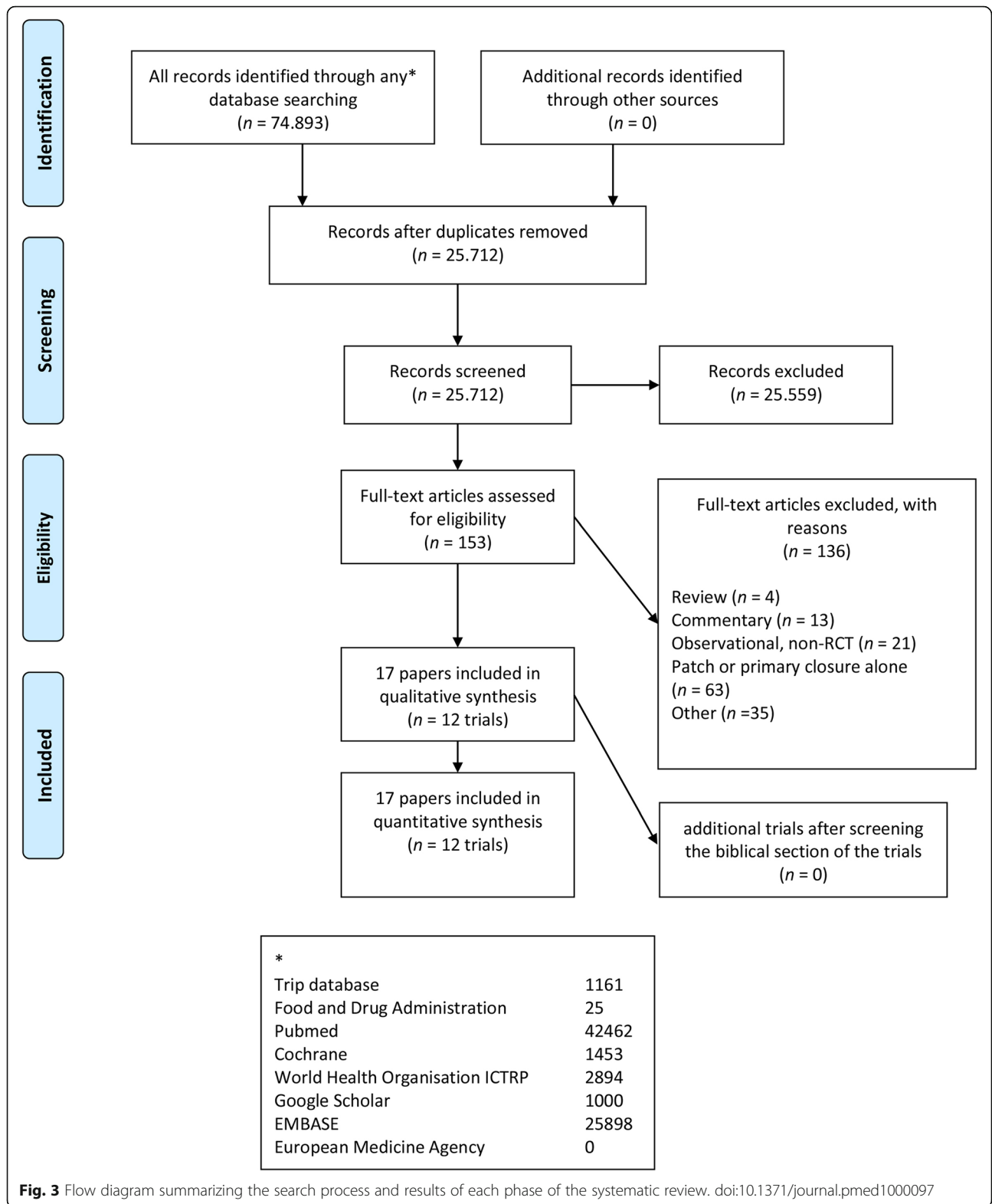
A random-effects model and a fixed-effect model were used for meta-analysis in the presence of two or more trials included under the outcomes. In case of discrepancy between the two models, both results were reported. Considering the anticipated abundant clinical heterogeneity, the random-effects model was emphasized except if one or two trials dominated the available evidence. The assumptions behind the two models are different. However, we seldom know which assumptions are correct in each specific case. We chose to present the random-effects model to reflect the weighted average between the results from different populations/trial methods and this average may not apply to all situations.

Best-case scenario and worst-case scenario

Some of the included trials did not specify in which group an event occurred. Worst-case/best-case scenarios for patch angioplasty were made for all-cause mortality, < 30 days mortality, > 30 days mortality, serious adverse events, and < 30 days stroke.

GRADE

Summary of findings (SOF) tables (supplementary file 2) were produced. A SOF table for best-case scenario for patch and a worst-case scenario for patch was made. Reasons for downgrading the quality of the



available evidence are as follows: risk of bias evaluation of the included bias domains, publication bias, heterogeneity, imprecision, and indirectness (e.g.,

length of stay is a surrogate outcome measure) [46–48]. We compared the imprecision assessed according to GRADE with that of TSA [49]. No differences

were found, and all evidence is graded at very low certainty.

Patient and public involvement

Patients and/or public were not involved in this study.

Results

Study selection

The search resulted in 74,893 hits (Fig. 3). In each step of the selection, the publication was included in any case of doubt. Double publications of trial results were considered as one trial. Based on titles and abstracts, 74,740 publications could be excluded. A total of 153 publications remained for full text evaluation from which 136 were excluded based on protocol criteria. Finally, 17 publications [50–62] describing 12 RCTs were included, published in the period 1986 to 2006 [50–54, 59, 61, 62]. Additional data of each trial was requested by contacting the authors repeatedly if needed. None of the included trials used a quasi-randomized design. An updated search on the 3rd of January 2021 showed no new randomized clinical trials on this specific topic.

Patient characteristics and trial designs

Overall, the 12 included trials randomized 2187 patients and performed 2335 operations for carotid stenosis between CEA with patch closure (1280 operations) versus CEA with primary closure (1055 operations). All 12 trials used similar inclusion criteria, baseline characteristics of the populations were comparable, and all patients undergoing a CEA were included. Concerning the grade of carotid stenosis, the trials reported inconsistently. The specification of exclusion criteria was more clearly reported and

included concomitant surgery such as coronary arterial bypass grafting, previous carotid surgery, and small diameter of the internal carotid artery (ICA) (< 4 mm), and abnormal anatomy of the ICA varied and were sometimes not described [61]. Patient characteristics were not extensively described, but no imbalances in age or sex were found (Table S1 and Table 1). The number of patients and procedures differed because some patients were operated on both carotid arteries, sometimes with different techniques on each side. Eight trials used a two-armed parallel group design (patch closure versus primary closure of the arterial wall) and four trials used a three-armed design (2 types of patch material versus primary closure) [51, 53, 62].

Surgical interventions

Most trials gave a description of the surgical technique. CEA with patch angioplasty versus CEA with primary closure of the arterial wall were performed as described in line with the protocol [32].

Risk of bias

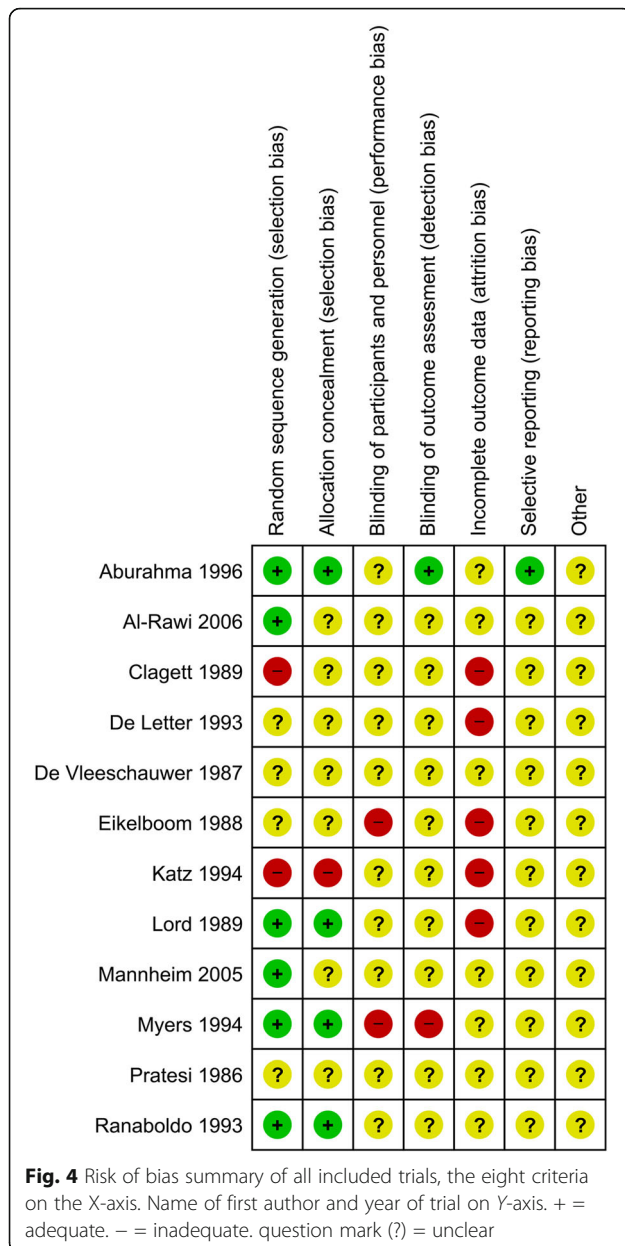
We assessed the risk of bias of the included trials (Fig. 4). Many bias risk components were unclear. None of the trials used any form of blinding, especially regarding outcome assessment. In 12 trials, one or more out of seven bias components were scored as unclear or at high risk of bias. Therefore, all trials were classified at high risk of bias. Categorization of systematic error (bias) of these clinical intervention studies lead to the level of evidence of each trial of 1d at best [31].

All the available evidence was scored at very low certainty according to GRADE (supplementary file 2).

Table 1 Perioperative characteristics of randomized CEA patients with patch angioplasty versus CEA patients with primary closure of all included trials

Author and year	Anesthesia	TCD	Pressure assessment	Shunt	Asymptomatic
Pratesi 1986 [63]	U	U	U	U	10/100 operations
Vleeschauer 1987 [50]	U	U	U	Used when indicated	U
Eikelboom 1988 [64]	General	U	U	Used when indicated	23/129 operations
Clagett, 1989 [55]	General	Standardized	U	Always	36/152 operations
Lord 1989 [51]	U	U	Routine	Used when indicated	U
Ranaboldo 1993 [59]	U	U	U	Used when indicated	17/213 operations
Katz 1994 [52]	General	Standardized	U	Standardized	38/100 operations
De Letter 1993 [65]	U	U	U	U	U
Myers 1994 [53]	General	Standardized	U	Standardized	40/163 operations
Aburahma 1996 [62]	General	Standardized	U	Standardized	133/399 operations
Mannheim 2005 [54]	Plexus (9 patients general)	U	Routine	Used when indicated	217/422 operations
Al-Rawi 2006 [61]	General	Standardized	U	Used when indicated	31/328 operations

TCD Transcranial Doppler, U Unknown, V Vein patch, PTFE Polytetrafluoroethylene patch, OV Obligatory vein patch, SV Saphenous vein patch, JV Jugular vein patch



Primary outcomes
All-cause mortality

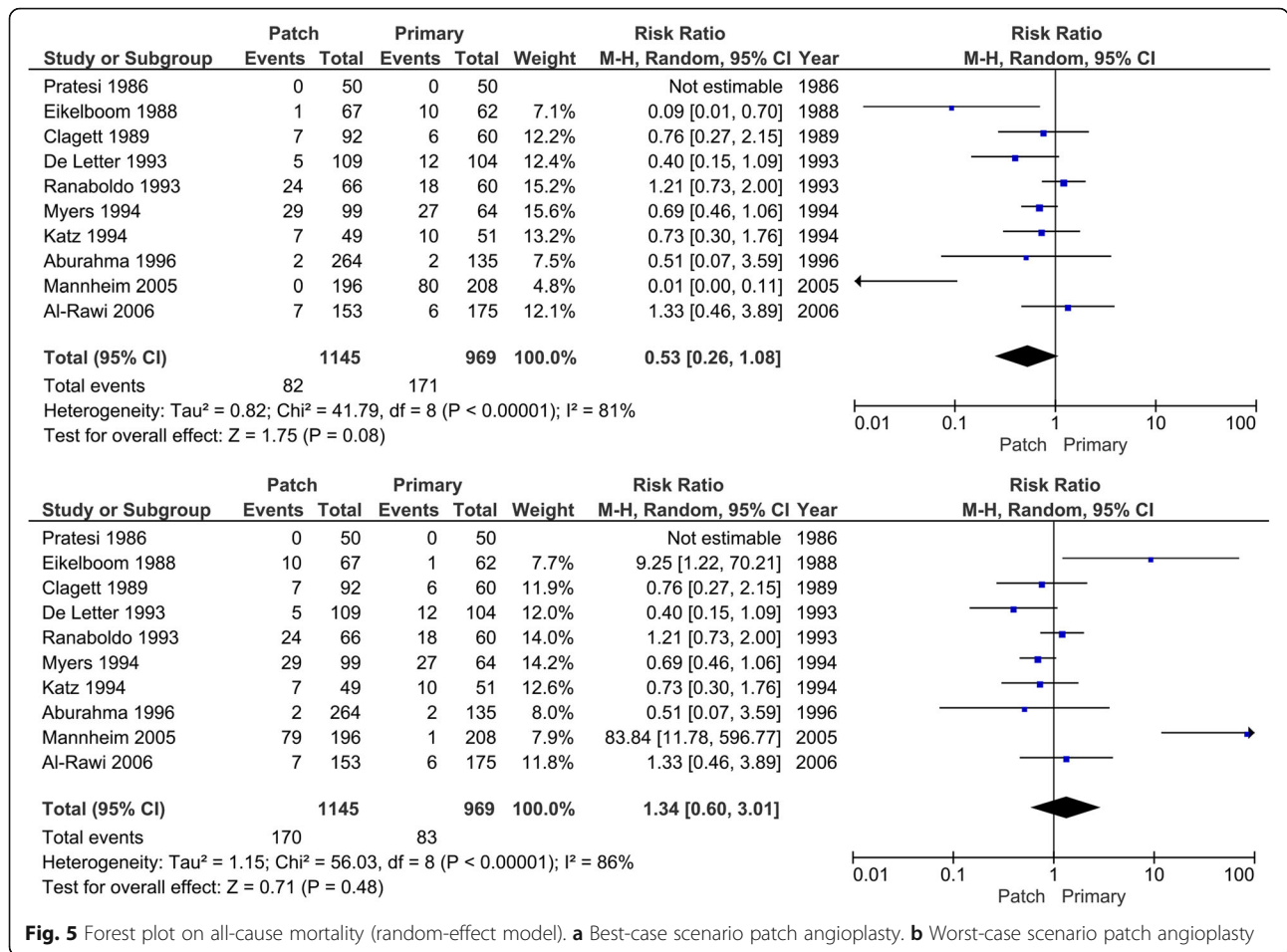
Ten trials reported on all-cause mortality. A total of 1145 operations in the patch angioplasty group and 969 in the primary closure group were reported. In total, 82 patients in the best-case scenario or 171 patients in the worst-case scenario for patch closure (7.2 to 14.8%) died compared with the primary closure group in which 83 patients (worst-case scenario patch) or 171 (best-case scenario patch) (7 to 8.1%) died in 969 operations (Fig. 5). Best-case scenario patch is defined as all the events happened in the primary closure group. Worst-case scenario patch is defined as all the events happened in the patch closure group. In meta-analysis, heterogeneity was present (I^2 81

to 86%; $p < 0.01$), and the random-effects model did not show statistical significant differences between the patch angioplasty group versus the primary closure group (RR 0.53; 95% CI 0.26 to 1.08; $p = 0.08$) with very low certainty of evidence (CoE) according to GRADE in the best-case scenario for patch angioplasty. In the worst-case scenario for patch angioplasty, also no significant difference was found (RR 1.34; 95% CI 0.60 to 3.01; $p = 0.48$) The TSA-adjusted CI (or the trial sequential monitoring boundaries) could not be calculated due to too small information fraction (actual information size)/ (required information size), as when this ratio is $< 1-2\%$ the TSA program is not able to calculate CI and boundaries. Accordingly, we would have downgraded imprecision at least 1 level with TSA, this was already at the lowest level according to GRADE.

The trial of Eikelboom [64] described nine patients who died, but did not describe to which group they belonged (patch or primary closure). The trial of Mannheim [54] described 79 deaths, also without specifying in which groups. Worst-case/best-case scenario for patch angioplasty was made. In the trial of Pratesi [63], there were zero deaths at maximum follow-up in both arms, patch angioplasty and primary closure. The RevMan program can correct for the zero events in one arm of the trial. When there are zero events in both arms, Revman cannot correct for these zero-zero events. An additional (empirical) analysis was done in the TSA program to correct for these zero-zero events. No differences were found when compared to the Revman analysis. This TSA analysis was also done for mortality < 30 days after surgery (Pratesi, Clagett, Myers, Katz, Al-Rawi [52, 53, 55, 61, 63] had zero-zero counts) and mortality > 30 days after surgery (Pratesi and Aburahma [60, 63] had zero-zero counts). No differences were found when compared to the Revman analysis.

Mortality < 30 days after surgery (procedure related)

Six (best scenario for patch) or 7 (worst scenario for patch) patients are described (0.5 to 0.6%) in 1107 operations in the patch angioplasty group compared with 7 (worst-case scenario for patch) or 8 patients (best-case scenario for patch) (0.7 to 0.8%) in 969 operations in the primary closure group who died within 30 days after surgery (Fig. 6). In the patch angioplasty group, 1 patient died due to myocardial infarction, 1 due to respiratory arrest, and 1 from cardiopulmonary arrest. In the primary group, four patients died due to myocardial infarction. In meta-analysis, low heterogeneity was present in both scenarios (I^2 0%; $p = 0.81$ or $p = 0.90$), and the random-effects model showed no statistically significant differences between the patch angioplasty and primary closure group (RR 0.61; 95% CI 0.21 to 1.76; $p = 0.36$ best-case) and (RR 0.80; 95% CI 0.28 to 2.32; $p = 0.69$ worst-case) with very low CoE. The trial of Eikelboom



[64] described one patient who died, but they did not describe in which group. A best-case and worst-case scenario for patch angioplasty was made.

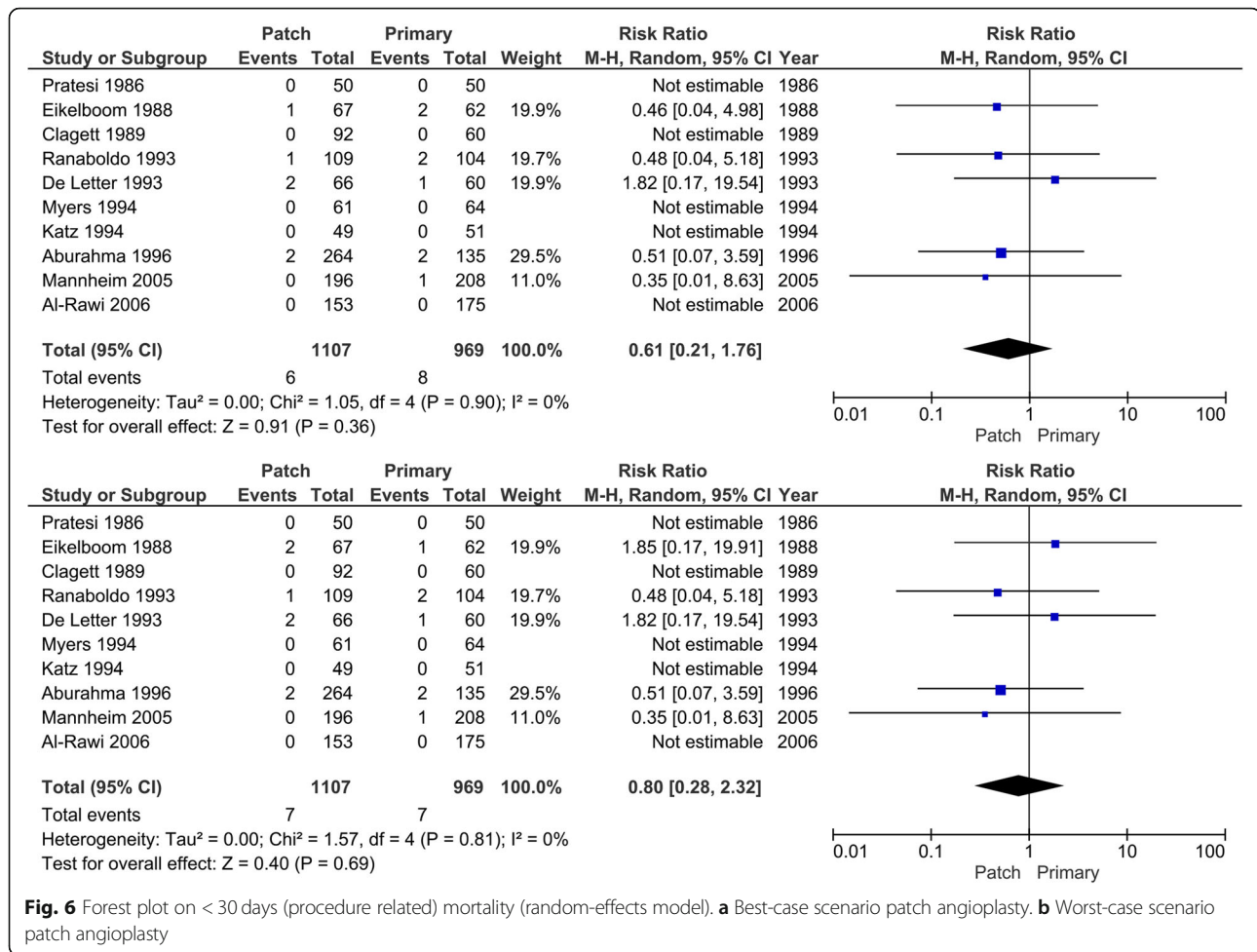
Mortality > 30 days (after surgery, non-procedure related)

Sixty-five (best-case scenario patch) or 152 (worst-case scenario patch) patients (6.1 to 14.4%) in 1057 operations in the patch angioplasty group are reported who died > 30 days after surgery for various reasons such as cardiac disease, cancer, and unknown/other (Fig. 7). Compared with the primary closure group in which 76 (worst-case scenario patch) or 163 (best-case scenario patch) patients (8.3 to 15.4%) in 919 operations died > 30 days after surgery. In meta-analysis, heterogeneity was present (I² 83 and 86%; p = < 0.01), and the random-effects model did not show statistical significant differences between the patch angioplasty and the primary closure group (RR 0.52; 95% CI 0.23 to 1.16; p = 0.11) with very low CoE when looking at the best-case scenario for patch angioplasty. In the worst-case scenario, no significant difference was seen (RR 1.35; 95% CI 0.55 to 3.30; p = 0.51). Of the eight patients who died in the Eikelboom trial [64], it is unknown in which group they

were randomized. The trial of Mannheim [54] described 79 deaths, also unknown in which group. The Kaplan-Meier figure showed similar death/survival rates, the assumption can be made that the events are spread fifty-fifty in each group. Sensitivity analysis did not show a different result compared with the best-case and worst-case scenario that was made. The trial of AbuRahma [60] mentioned that some of the patients died after 30 days, but they did not described how many.

Serious adverse events (SAE)

Eleven trials reported serious adverse events after surgery. In 1197 operations were 88 (best-case scenario patch) or 93 patients (worst-case scenario patch) SAE reported (7.4 to 7.8%) in the patch angioplasty group versus 103 patients (worst-case scenario patch) or 108 patients (best-case scenario patch) with SAE (10.1 to 10.6%) in 1019 operations in the primary closure group (Fig. 8). In meta-analysis, low heterogeneity was present (I² 0%; p = 0.61 and 0.74), and the random-effects model showed statistically significant differences between the patch angioplasty and primary closure group (RR 0.73; 95% CI 0.56 to 0.96; p = 0.02) at very



low CoE when looking at the best-case scenario for patch angioplasty. In the worst-case scenario, also a significant difference was seen (RR 0.76; 95% CI 0.58 to 1.00; $p = 0.05$). The trial of Pratesi [63] described 5 patients who died, but they did not describe in which group (patch or primary closure). A best-case and worst-case scenario for patch angioplasty was made.

Health-related quality of life

No meta-analysis of health-related quality of life was performed as none of the trials described health-related quality of life aspects. None of the trials reported health status.

Secondary outcomes

Symptomatic or asymptomatic arterial occlusion or restenosis (50 to 99%)

All trials described symptomatic or asymptomatic arterial occlusion or restenosis (50 to 99%). In the patch angioplasty group, 56 patients (3.8%) of the 1223 operations in the primary closure group versus 140 patients (11.6%) of the 1053 operations suffered from symptomatic or

asymptomatic arterial occlusion or restenosis (50 to 99%) (Fig. 9).

Substantial heterogeneity was present (I^2 62%; $p < 0.05$), the random-effects model showed statistically significant differences between the patch angioplasty versus the primary closure group (RR 0.41; 95% CI 0.23 to 0.71; $p = < 0.01$) with very low CoE.

Exploratory outcomes

Separately reported serious adverse events

In one trial, one patient suffered one or more SAE within 30 days after surgery. Katz [52] describes a patient, 4 weeks after initial surgery with a draining sinus tract infection after polytetrafluoroethylene (PTFE) patch placement. It was necessary to remove the PTFE patch and replace it with a venous patch.

Separately reported non-serious adverse events

None of the trials reported such events within 30 days after surgery.

Stroke < 30 days after surgery

Eleven trials reported on stroke < 30 days after surgery (Fig. 10). There are a total of 20 strokes (best-case scenario patch) or 24 (worst-case scenario patch) (1.7 to 2.0%) in 1197 operations in the patch angioplasty group versus 27 (worst-case scenario patch) or 31 strokes (best-case scenario patch) (2.6 to 3.0%) in 1019 operations in the primary closure group. In meta-analysis, low heterogeneity was present (I^2 9% and 18%; $p = 0.36$ and $p = 0.28$), and the random-effects model showed no statistically significant differences between the patch angioplasty and primary closure group (RR 0.63; 95% CI 0.33 to 1.19; $p = 0.15$) with very low CoE when looking at the best-case scenario for patch angioplasty. In the worst-case scenario, no significant difference was seen (RR 0.76; 95% CI 0.38 to 1.49; $p = 0.42$). The trial of Pratesi [63] described four patients who suffered a stroke, but they did not describe in which group. A best-case and worst-case scenario for patch angioplasty was made.

Funnel plots were not established as funnel plot asymmetry should be used only when there are at least 10 studies included in the meta-analysis; also, the included data was considered outdated [30].

Trial sequential analysis (TSA)

For all outcomes, model variance-based heterogeneity was estimated 0%. We did not perform the TSA with 25% diversity (as stated in protocol [32]) since this would only further increase the required information size.

When calculating the TSA scenarios for point-estimates obtained in the meta-analysis, we found for all-cause mortality, mortality > 30 days, SAE, and < 30 days stroke and restenosis the TSA all gave inconclusive results, underlining the information size is extremely short of the required. With mortality < 30 days, the alpha spending boundary is ignored due to too small information.

We did not compare the imprecision assessed according to GRADE with that of TSA as planned because we could not perform the primary TSAs as planned in the protocol due to too little statistical information size. Accordingly, we would have downgraded imprecision two levels with TSA, and this was already at the lowest level.

Subgroup analysis

None of the trials showed low risk of bias and the subgroups describing different patch materials were too small, precluding the pre-planned subgroup analyses. This was due to lack of data despite several attempts at contacting the corresponding authors of the trials. None of the trials reported statin use, body mass index, or American Society of Anaesthesiologists classification reported.

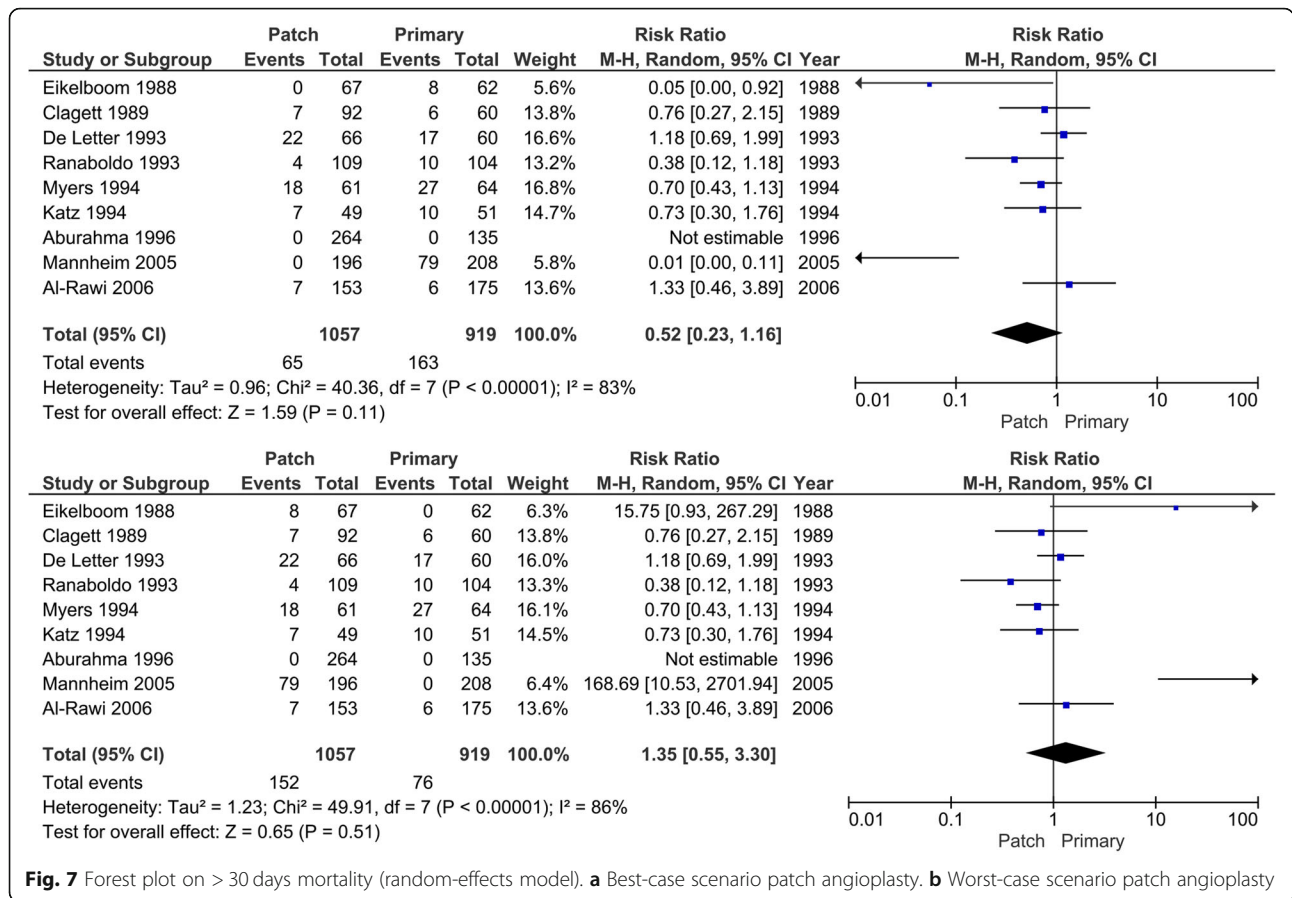
Discussion

This systematic review with meta-analysis and trial sequential analysis (TSA) included 12 RCTs. Overall, the trials randomized 2187 patients and performed 2335 carotid endarterectomies, comparing patch angioplasty versus primary closure in carotid surgery for symptomatic patients.

In this review, the percentage of death < 30 days after surgery is comparable with the highest reported in other literature [15]. In < 30 days mortality and serious adverse events (SAE), I^2 was 0%; nevertheless, clinical heterogeneity is not excluded by an I^2 of 0%. An explanation could be a low number of included RCTs.

The current guidelines favor patch angioplasty above primary closure after carotid surgery [8, 16, 17]. The recommendation is based on trials that did not report clearly on patient-level data (one patient with one or more SAE); instead, the trials reported a number of complications and a number of operations. We tried contacting the corresponding author of each trial at least twice, with no response at all. The lack of individual patient data prohibited us doing the statistical analysis as planned in the protocol. We evaluated the included trials according to the three dimensions of risk of error: bias, “play of chance,” and design [31]. Trials fall short on the bias protection, the included numbers of patients, and the chosen outcomes. All trials were classified at high risk of bias, as they all scored unclear or high risk of bias in one or more of the seven bias risk components (Fig. 4). For example, none of the trials conducted blinded outcomes assessment which is known to affect outcomes such as mortality [66]. Therefore, the meta-analytic effect estimates in our analyses may eventually appear to overestimate the effect when trials at low risk of bias emerge, all the included RCTs were at evidence level 1d [31].

A firm conclusion on which technique is superior cannot be drawn yet based on the current available literature. And even though firm evidence is missing, our guidelines are based on these old and uncertain trial data. We may agree with the guidelines advice to use patch angioplasty awaiting firm evidence to support this. Despite the current guideline, a small majority of the vascular surgeons use patch angioplasty when performing carotid endarterectomy. For example in the CREST-1 trial (level of evidence 1b [31]), the actual rate of patch closure was only in 62.4% of the patients [67]. Another recent review suggested a higher rate of restenosis after primary closure. The methodological quality of the included studies was considered moderate to poor [33]. The lack of current evidence at low risk of bias underscores the need for new RCTs because the (medical) treatment of patients with a carotid stenosis has been improved over the last two decades.



All included RCTs in this review are 15 to 35 years old and many aspects on handling and treating these patients changed during the last couple of years. For example, most centers are now using ultrasound to locate the lesion, and centralization of treatment has taken place. The prognosis of patients may also be influenced by several other confounding factors and/or different use of co-interventions. For example, secondary prevention has evolved during the last decades [68–71]. These outdated RCTs are more bias-prone, because randomization was less well implemented or described 20 years ago, and less applicable to current practice of vascular surgery (indirectness). Nowadays, cardiovascular risk management is well known and discussed with vascular internal specialists and general practitioners.

The included trials did not describe the following: any learning curve effect, single surgeon performance [50, 61], single surgeon trials, dedicated carotid vascular teams, large volume centers, (non-)training centers, all influencing heterogeneity. Therefore, common clinical practice and the number of patients with complication ought to be followed up through clinical databases and compared with benchmark values [30].

In the included RCTs in the current review, the available information about the degree of stenosis is scarce.

The degree of stenosis and its measurements is still debated [8]. The guidelines agree to perform surgery when a symptomatic patient has a 70 to 99% stenosis. Between 50 and 69% stenosis, there is room for discussion with the patient and the caregiver [6–8]. In essence, this means that every patient with a symptomatic stenosis of > 50% will be a candidate for surgery. After extensive discussions with all co-authors and external experts, every patient with a symptomatic stenosis of the internal carotid artery > 50% was considered a candidate for surgery, but due to lack of data concerning the degree of stenosis of each patient, and the relatively small numbers of patients, (a)symptomatic patients in contrast to only symptomatic patients as stated in the protocol were included [32].

In this review, the outcome measures were graded from the patients’ point of view according to GRADE, focusing on the patient-important outcomes critical for decision making as stated in the protocol [32, 37, 72]. Overall mortality, SAE (including stroke), and restenosis were considered as such critical outcomes [32]. Future trials and studies should be thoroughly discussed, well-organized, registered, and should be protocol based before launched [73]. However, even though databases may provide large numbers of patients, and given they

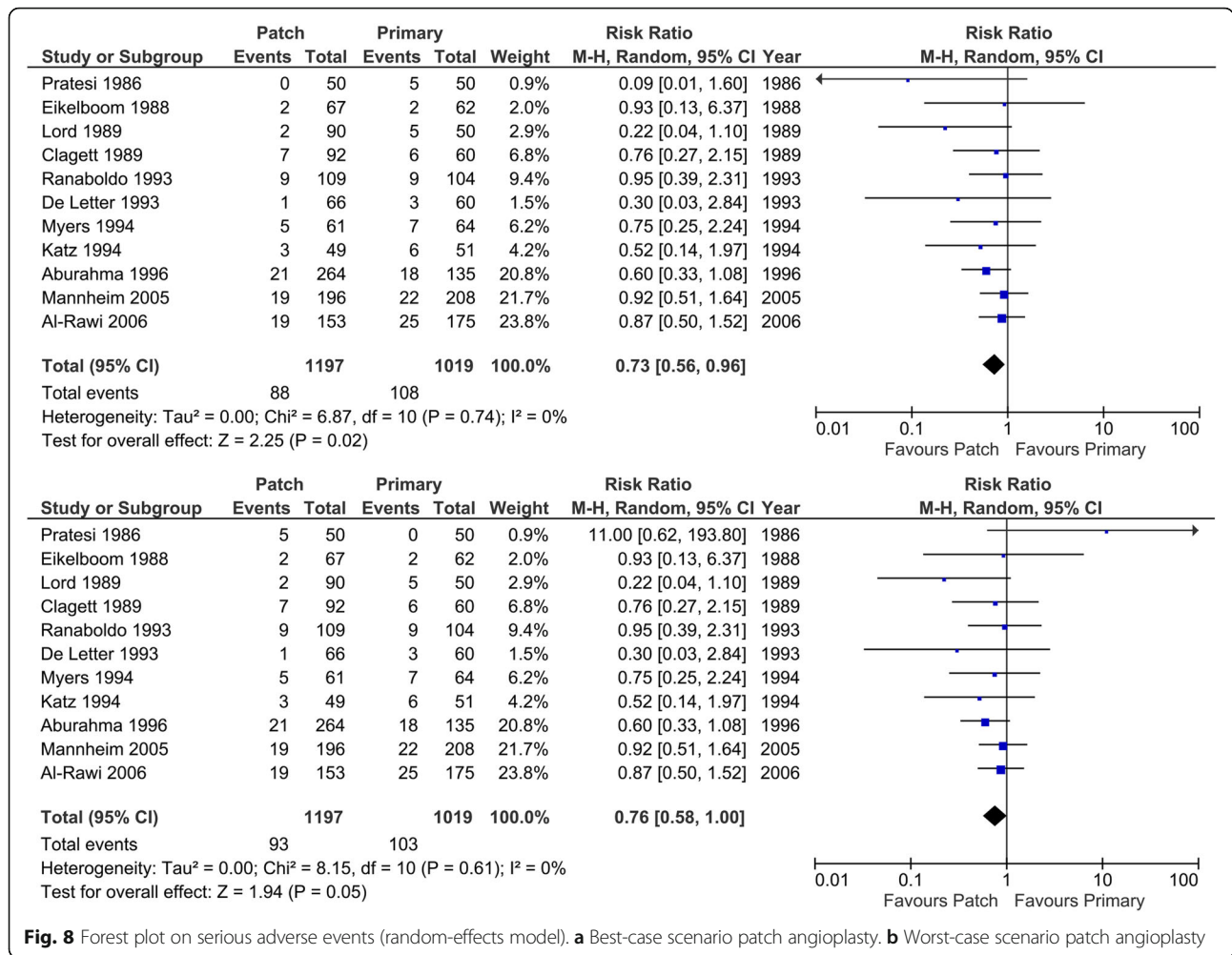


Fig. 8 Forest plot on serious adverse events (random-effects model). **a** Best-case scenario patch angioplasty. **b** Worst-case scenario patch angioplasty

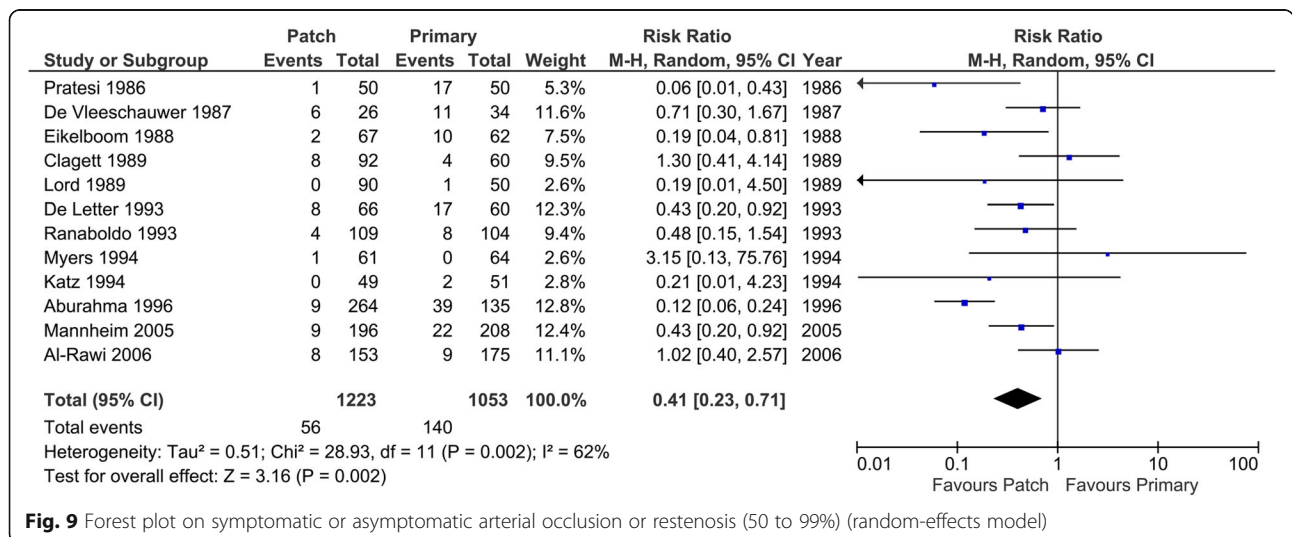


Fig. 9 Forest plot on symptomatic or asymptomatic arterial occlusion or restenosis (50 to 99%) (random-effects model)

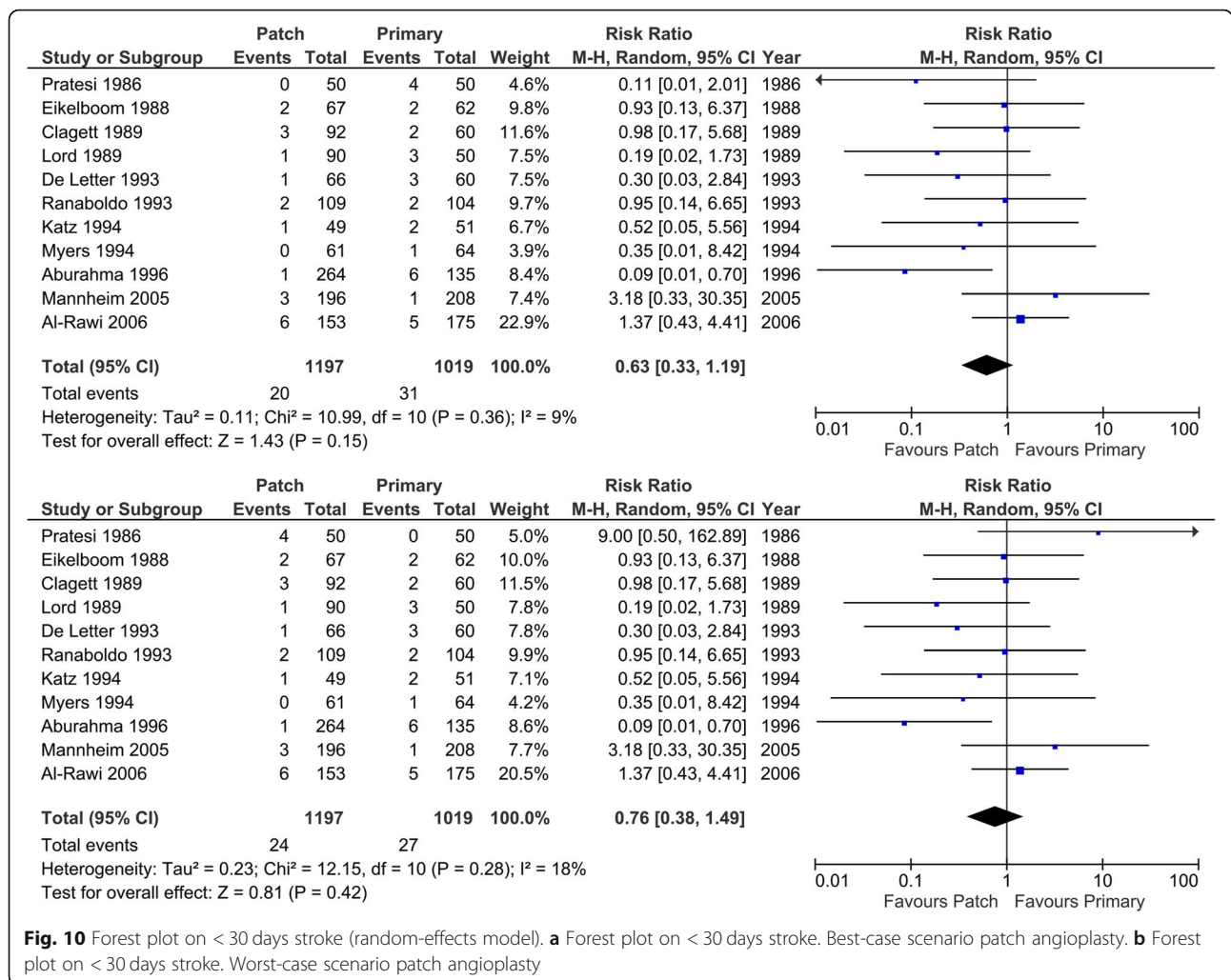


Fig. 10 Forest plot on < 30 days stroke (random-effects model). **a** Forest plot on < 30 days stroke. Best-case scenario patch angioplasty. **b** Forest plot on < 30 days stroke. Worst-case scenario patch angioplasty

inform on consecutive cohorts of patients and may provide some answers of the actual status on benefits and harms, they will always be prone to the huge risk of bias introduced by the choice of intervention by indication. None of the trials included in this review are large trials (> randomized 2000 patients) in the sense that they statistically have the power to detect or exclude even rather large intervention effects on important outcomes. Therefore, future studies should plan to check their position along the three dimensions of possible errors: bias, “the play of chance,” and the choice of outcomes. It has been proven extensively that trials at low risk of bias produce more reliable results compared with trials at high risk of bias [30, 72]. Based on the above considerations, we propose to conduct new large trials at low risk of bias and using outcomes critical for decision making. These future trials should focus on comparing patch closure versus primary closure [60].

Multiple reviews have been published on this topic with similar conclusions [33, 34]. These reviews concluded that

all the evidence available is of moderate quality, and future RCTs are needed. In the referred reviews, patch angioplasty seems to be favorable in terms of perioperative stroke, and restenosis (> 50% or occlusion) compared with primary closure. These reviews could have graded the available evidence down to the lowest level of certainty due to the risk of bias and imprecision. Although patch angioplasty seems favorable for certain outcomes, each review has different outcomes on which this conclusion is made. So all the available reviewed evidence is of poor quality and leads to statements and conclusions that are likely unwarranted or at least questionable. More trials at low risk of bias are needed before firm conclusions can be drawn and recommendations can be made. This important point was recently highlighted during a large global Vascular Congress (carotid sessions at VEITH) November 2019, New York, USA. A potential obstacle is the size of such RCTs, to demonstrate a difference in mortality, stroke, and internal carotid artery restenosis or occlusion [61]. The number of patients needed would be high. In

this review, the sum of patients included was too small to perform TSA. TSA could have shown how many more randomized patients may be needed to draw firm conclusions. Right now the required number of patients needed to identify an effect is large [74]. Based on the performed meta-analysis, we conclude that more evidence is needed on this topic.

Conclusions

This systematic review showed no conclusive evidence of a difference between carotid endarterectomy with patch angioplasty versus primary closure of the arterial wall on all-cause mortality, < 30 days mortality, < 30 days stroke, or any other serious adverse events. These conclusions are based on data from 15 to 35 years ago, obtained in trials with very low certainty according to GRADE, and should be interpreted cautiously. Therefore, we suggest conducting new randomized clinical trials patch angioplasty versus primary closure in carotid endarterectomy in symptomatic patients with an internal carotid artery stenosis of 50% or more. Such trials ought to be designed according to the Standard Protocol Items: Recommendations for Interventional Trials statement [75] and reported according to the Consolidated Standards of Reporting Trials statement [76]. Until conclusive evidence is obtained, the standard of care according to guidelines should not be abandoned.

Abbreviations

CEA: Carotid endarterectomy; CI: Confidence interval; CoE: Certainty of Evidence; ECST: European Carotid Surgery Trial; ESVS: European Society of Vascular Surgery; FWER: Family-wise error rate; GRADE: Grading of Recommendations Assessment, Development and Evaluation; ICA: Internal carotid artery; MD: Mean difference; NASCET: North American Symptomatic Carotid Endarterectomy Trial; NVvV: Nederlandse Vereniging voor Vaatchirurgie (Dutch Society of Vascular Surgery); PRISMA: Preferred Reporting Items for Systematic reviews and Meta-Analysis; PTFE: Polytetrafluoroethylene; RCT: Randomized clinical trial; RR: Relative risk; SAE: Serious adverse events; TCD: Transcranial Doppler; TSA: Trial sequential analysis

Supplementary Information

The online version contains supplementary material available at <https://doi.org/10.1186/s13643-021-01692-8>.

Additional file 1. Search strategy.

Additional file 2. GRADE summary of findings table.

Additional file 3: Table S1. (uploaded as supplementary file because of the table size).

Additional file 4. Review Protocol.

Acknowledgements

The authors would like to thank Mrs. L.W.M. Boerboom, MSc, medical information specialist (Medical Library, Elisabeth-Tweesteden Hospital, Tilburg, the Netherlands), K. Monk, and N.J. Slater, MD, PhD for their assistance

Authors' contributions

Conceived and designed the protocol: MSM, JW, CG, FK, GGK. Performed the search and bias assessment: MSM, GGK. Analyzed the data: MSM, JW, FK, GGK. Contributed reagents/materials/analysis tools: MSM, JW, AKHJ, CG, FLM,

FK, GGK. Wrote this review-article: MSM, JW, AKHJ, CG, FLM, FK, GGK. Contributed to high standard of performing a protocol-based systematic review with trial sequential analyses: MSM, JW, AKHJ, CG, FLM, FK, GGK. The author(s) read and approved the final manuscript.

Funding

This research did not receive any specific grant from funding agencies in the public, commercial, or not-for-profit sectors.

Availability of data and materials

The search strategy that was followed in the different online libraries, PubMed/Medline, The Cochrane Library, and Embase is added as supplementary file 1. The full key terms and MeSH terms are described. The protocol is added as supplementary file 4. Upon request, more data are available.

Declarations

Ethics approval and consent to participate

Not applicable.

Consent for publication

All authors approved this version of the manuscript.

Competing interests

We have no known conflicts of interest to disclose apart from the following. Jørn Wetterslev and Christian Glud are members of the taskforce at Copenhagen Trial Unit (CTU) to develop theory and software for doing trial sequential analysis (TSA) currently freeware available including a manual at www.ctu.tsa.

Author details

¹Department of Vascular Surgery, Rijnstate Hospital, Wagnerlaan 55, 6815 AD Arnhem, the Netherlands. ²Copenhagen Trial Unit, Centre for Clinical Intervention Research, The Capital Region of Denmark, Rigshospitalet, Copenhagen University Hospital, Copenhagen, Denmark. ³Department of Vascular Surgery, Medical Center Leeuwarden, Leeuwarden, the Netherlands. ⁴Institute of Regional Health Research, Faculty of Health Sciences, University of Southern Denmark, Odense, Denmark. ⁵Department of Vascular Surgery, University Medical Center Utrecht, Utrecht, the Netherlands. ⁶Department of Critical Care, University of Groningen, University Medical Center Groningen, Groningen, the Netherlands. ⁷Department of Vascular Surgery, ZGT, Hospital Group Twente, Almelo/Hengelo, the Netherlands.

Received: 28 October 2020 Accepted: 26 April 2021

Published online: 06 May 2021

References

1. Fisher M. Occlusion of the internal carotid artery. *AMA Arch Neurol Psychiatry*. 1951;65(3):346–77. <https://doi.org/10.1001/archneurpsyc.1951.02320030083009>.
2. Raman G, Moorthy D, Hadar N, Dahabreh IJ, O'Donnell TF. Management strategies for asymptomatic carotid stenosis: a systematic review and meta-analysis. *Ann Intern Med*. 2013;158(9):676–85. <https://doi.org/10.7326/0003-4819-158-9-201305070-00007>.
3. Abbott AL. Medical (nonsurgical) intervention alone is now best for prevention of stroke associated with asymptomatic severe carotid stenosis: results of a systematic review and analysis. *Stroke*. 2009;40(10):573–84. <https://doi.org/10.1161/STROKEAHA.109.556068>.
4. Constantinou J, Jayia P, Hamilton G. Best evidence for medical therapy for carotid artery stenosis. *J Vasc Surg*. 2013;58(4):1129–39. <https://doi.org/10.1016/j.jvs.2013.06.085>.
5. Cina CS, Clase CM, Haynes RB, Orrapin S, Rerkasem K. Carotid endarterectomy for symptomatic carotid stenosis. *Cochrane Database Syst Rev*. 2017;(2):CD001081. <https://doi.org/10.1002/14651858.CD001081>.
6. Warlow C. MRC European Carotid Surgery Trial: interim results for symptomatic patients with severe (70–99%) or with mild (0–29%) carotid stenosis. *Lancet*. 1991;337(8752):1235–43. [https://doi.org/10.1016/0140-6736\(91\)92916-P](https://doi.org/10.1016/0140-6736(91)92916-P).

7. Collaborators NASCET. Beneficial effect of carotid endarterectomy in symptomatic patients with high-grade carotid stenosis. *N Engl J Med*. 1991; 325(7):445–53.
8. Naylor A. Management of atherosclerotic carotid and vertebral artery disease: 2017 clinical practice guidelines of the European Society for Vascular Surgery (ESVS). *Eur J Vasc Endovasc Surg*. 2017;55(1):1–79. <https://doi.org/10.1016/j.ejvs.2017.06.021>.
9. Bernstein EF, Torem S, Dilley RB. Does carotid restenosis predict an increased risk of late symptoms, stroke, or death? *Ann Surg*. 1990;212(5): 629–36. <https://doi.org/10.1097/0000658-199011000-00011>.
10. Knudsen L, Sillesen H, Schroeder T, Buchardt Hansen HJ. Eight to ten years follow-up after carotid endarterectomy: clinical evaluation and Doppler examination of patients operated on between 1978 and 1980. *Eur J Vasc Surg*. 1990;4(3):259–64. [https://doi.org/10.1016/S0950-821X\(05\)80204-X](https://doi.org/10.1016/S0950-821X(05)80204-X).
11. Ouriel K, Green RM. Clinical and technical factors influencing recurrent carotid stenosis and occlusion after endarterectomy. *J Vasc Surg*. 1987;5(5): 702–6. [https://doi.org/10.1016/0741-5214\(87\)90157-1](https://doi.org/10.1016/0741-5214(87)90157-1).
12. Volteas N, Labropoulos N, Leon M, Kalodiki E, Chan PNA. Risk factors associated with recurrent carotid stenosis. *Int Angiol*. 1994;13(2):143–7.
13. Zierler RE, Bandyk DF, Thiele BL, Strandness DE. Carotid artery stenosis following endarterectomy. *Arch Surg*. 1982;117(11):1408–15. <https://doi.org/10.1001/archsurg.1982.01380350016003>.
14. De Bakey ME, Crawford ES, Cooley DA, Morris GC Jr. Surgical considerations of occlusive disease of innominate, carotid, subclavian, and vertebral arteries. *Ann Surg*. 1959;149(5):690–710 Available from: <http://www.ncbi.nlm.nih.gov/pubmed/13637687%5Cn%20http://www.pubmedcentral.nih.gov/articlerender.fcgi?artid=PMC1451085>.
15. Rerkasem K, Rothwell PM. Systematic review of randomized controlled trials of patch angioplasty versus primary closure and different types of patch materials during carotid endarterectomy. *Asian J Surg*. 2011;34(1):32–40. [https://doi.org/10.1016/S1015-9584\(11\)60016-X](https://doi.org/10.1016/S1015-9584(11)60016-X).
16. Liapis CD, Bell SPRF, Mikhailidis D, Sivenius J, Nicolaidis A, Fernandes e Fernandes J, et al. ESVS Guidelines. Invasive treatment for carotid stenosis: indications, techniques. *Eur J Vasc Endovasc Surg*. 2009;37(4 SUPPL):1–19. <https://doi.org/10.1016/j.ejvs.2008.11.006>.
17. Nederlandse Vereniging voor Neurologie en het Kwaliteitsinstituut voor de Gezondheidszorg CBO. Diagnostiek, behandeling en zorg voor patiënten met een beroerte. Richtlijn Diagnostiek, behandeling en zorg voor patiënten met een beroerte. 2008. Available from: <http://med-info.nl/Richtlijnen/Geriatrie/Beroerte.pdf>. Cited 2017 Dec 2.
18. Bass A, Krupski WC, Schneider PA, Otis SM, Dilley RB, Bernstein EF. Intraoperative transcranial Doppler: limitations of the method. *J Vasc Surg*. 1989;10(5):549–53. [https://doi.org/10.1016/0741-5214\(89\)90137-7](https://doi.org/10.1016/0741-5214(89)90137-7).
19. Gnanadev DA, Wang N, Comunale FL, Reile DA. Carotid artery stump pressure: how reliable is it in predicting the need for a shunt? *Ann Vasc Surg*. 1989;3(4):313–7. [https://doi.org/10.1016/S0890-5096\(06\)60152-0](https://doi.org/10.1016/S0890-5096(06)60152-0).
20. Kresowik T, Worsley M, Khoury M, Krain L. Limitations of electroencephalography for cerebral ischemia during carotid endarterectomy. *J Vasc Surg*. 1991;13(3):439–43. <https://doi.org/10.1067/mva.1991.26500>.
21. Kearse LA, Brown EN, McPeck K. Somatosensory evoked potentials sensitivity relative to electroencephalography for cerebral ischemia during carotid endarterectomy. *Stroke*. 1992;23(4):498–505. <https://doi.org/10.1161/01.STR.23.4.498>.
22. Benjamin ME, Silva MB Jr, Watt C, McCaffrey MT, Burford-Froggs A, Flinn WR. Awake patient monitoring to determine the need for shunting during carotid endarterectomy. *Surgery*. 1993;114(4):673–9 discussion 679–681.
23. Rerkasem K, Bond R, Pm R. Local versus general anaesthesia for carotid endarterectomy (Review). *Cochrane Collab*. 2005;(2). <https://doi.org/10.1002/14651858.CD000126.pub2>.
24. Rerkasem K, Rothwell PM. Routine or selective carotid artery shunting for carotid endarterectomy (and different methods of monitoring in selective shunting). *Cochrane Database Syst Rev*. 2009;(4):CD000190. <https://doi.org/10.1002/14651858.CD000190.pub2>.
25. Rerkasem K, Rothwell PM. Patches of different types for carotid patch angioplasty. *Cochrane Database Syst Rev*. 2010;(3):CD000071. <https://doi.org/10.1002/14651858.CD000071.pub3>.
26. Chung B, Heo S, Park Y, Kim Y, Woo S, Kim D, et al. Comparative analysis using propensity score matching analysis: primary closure versus patch angioplasty during carotid endarterectomy. *Ann Vasc Surg*. 2019:1–7. <https://doi.org/10.1016/j.avsg.2018.11.011>.
27. Huizing E, Vos CG, Hulsebos RG, Van Den Akker PJ, De Borst GJ. Patch angioplasty or primary closure following carotid endarterectomy for symptomatic carotid artery stenosis. *Surg J*. 2018;1(212):96–101.
28. Edenfield L, Blazick E, Healey C, Hawkins R, Bloch P, Eldrup-jorgensen J, et al. Long-term impact of the Vascular Study Group of New England carotid patch quality initiative. *J Vasc Surg*. 2019;69(6):1801–6. <https://doi.org/10.1016/j.jvs.2018.07.078>.
29. Liu D, Li Z-L, Wang M, Wu R-D, Wang J-S, Wang S-M, et al. Comparative analysis of patch angioplasty versus selective primary closure during carotid endarterectomy performed at a single vascular center in China. *Ann Vasc Surg*. 2020; in press.
30. Higgins J, Green S. *Cochrane handbook for systematic review of intervention version 5.1.0*: The Cochrane Collaboration; 2011. Available from: www.cochrane-handbook.org
31. Keus F, Wetterslev J, Gluud C, van Laarhoven CJHM. Evidence at a glance: error matrix approach for overviewing available evidence. *BMC Med Res Methodol*. 2010;10:90. <https://doi.org/10.1186/1471-2288-10-90>.
32. Marsman MS, Wetterslev J, Jahrome AK, Gluud C, Moll FL, Karimi A, et al. Carotid endarterectomy with primary closure versus patch angioplasty in patients with symptomatic and significant stenosis: protocol for a systematic review with meta-analyses and trial sequential analysis of randomized clinical trials. *BMJ Open*. 2019;9(1–7):e026419. <https://doi.org/10.1136/bmjopen-2018-026419>.
33. Huizing E, Vos CG, Van Den Akker PJ, Schreve MA. A systematic review of patch angioplasty versus primary closure for carotid endarterectomy. *J Vasc Surg*. 2019;69(6):1962–74. <https://doi.org/10.1016/j.jvs.2018.10.096>.
34. Rerkasem K, Rothwell PM. Patch angioplasty versus primary closure for carotid endarterectomy. *Cochrane Database Syst Rev*. 2009;(4):CD000160. <https://doi.org/10.1002/14651858.CD000160.pub3>.
35. Moher D, Liberati A, Tetzlaff J, Altman DG, PRISMA Group. Preferred reporting items for systematic reviews and meta-analyses: the PRISMA statement. *PLoS Med*. 2009;6(7). <https://doi.org/10.1371/journal.pmed.1000097>.
36. Cao P, De Rango P, Zannetti S. Eversion vs conventional carotid endarterectomy: a systematic review. *Eur J Vasc Endovasc Surg*. 2002;23(3): 195–201. <https://doi.org/10.1053/ejvs.2001.1560>.
37. Guyatt GH, Oxman AD, Kunz R, Vist GE, Falck-Ytter Y, Schünemann HJ, et al. What is “quality of evidence” and why is it important to clinicians? *BMJ*. 2008;336(7651):995–8. <https://doi.org/10.1136/bmj.39490.551019.BE>.
38. International Conference on Harmonisation Expert Working Group. International conference on harmonization of technical requirements for registration of pharmaceuticals for human use. ICH harmonised tripartite guideline. Guideline for good clinical practice. *Guidel Good Clin Pract CFR ICH Guidel*. 1997;1:1–66. https://database.ich.org/sites/default/files/E6_R2_Addendum.pdf.
39. Sterne JAC, Savović J, Page MJ, Elbers RG, Blencowe NS, Boutron I, et al. RoB 2: a revised tool for assessing risk of bias in randomised trials as an essential component of a. *BMJ*. 2019;366(14898):1–8. <https://doi.org/10.1136/bmj.14898>.
40. Review Manager (RevMan). Copenhagen: The Nordic Cochrane Centre, The Cochrane Collaboration; 2014. Available from: <https://community.cochrane.org/help/tools-and-software/revman-5>. Accessed 2 Oct 2017.
41. Jakobsen JC, Wetterslev J, Lange T, Gluud C. Editorial - viewpoint: taking into account risks of random errors when analysing multiple outcomes in systematic reviews: *Cochrane Library*; 2016. p. 2–7. <https://doi.org/10.1002/14651858.ED000111>.
42. Jakobsen JC, Wetterslev J, Winkel P, Lange T, Gluud C. Thresholds for statistical and clinical significance in systematic reviews with meta-analytic methods. *BMC Med Res Methodol*. 2014;14(1):1–13. <https://doi.org/10.1186/1471-2288-14-120>.
43. Wetterslev J, Thorlund K, Brok J, Gluud C. Trial sequential analysis may establish when firm evidence is reached in cumulative meta-analysis. *J Clin Epidemiol*. 2008;61(1):64–75. <https://doi.org/10.1016/j.jclinepi.2007.03.013>.
44. Brok J, Thorlund K, Wetterslev J, Gluud C. Apparently conclusive meta-analyses may be inconclusive - trial sequential analysis adjustment of random error risk due to repetitive testing of accumulating data in apparently conclusive neonatal meta-analyses. *Int J Epidemiol*. 2009;38(1): 287–98. <https://doi.org/10.1093/ije/dyn188>.
45. Turner RM, Bird SM, Higgins JPT. The impact of study size on meta-analyses: examination of underpowered studies in Cochrane reviews. *PLoS One*. 2013; 8(3):1–8.
46. Guyatt GH, Oxman AD, Kunz R, Brozek J, Alonso-Coello P, Rind D, et al. GRADE guidelines 6. Rating the quality of evidence - Imprecision. *J Clin Epidemiol*. 2011;64(12):1283–93. <https://doi.org/10.1016/j.jclinepi.2011.01.012>.

47. Savović J, Jones HE, Altman DG, Harris RJ, Juni P, Pildal J, et al. Influence of reported study design characteristics on intervention effect estimates from randomised controlled trials: combined analysis of meta-epidemiological studies. *Health Technol Assess (Rockv)*. 2012;16(35):1–81. <https://doi.org/10.3310/hta16350>.
48. Savovic J, Jones HE, Altman DG, Harris RJ, Pildal J, Als-nielsen B, et al. Research and reporting methods influence of reported study design characteristics on intervention. *Ann Intern Med*. 2012;157(6):429–38. <https://doi.org/10.7326/0003-4819-157-6-201209180-00537>.
49. Castellini G, Bruschetti M, Gianola S, Gluud C, Moja L. Assessing imprecision in Cochrane systematic reviews: a comparison of GRADE and trial sequential analysis. *Syst Rev*. 2018;7(1):1–10. <https://doi.org/10.1186/s13643-018-0770-1>.
50. De Vleeschauwer P, Wirthle W, Holler L, Krause E, Horsch S. Is venous patch grafting after carotid endarterectomy able to reduce the rate of restenosis? Prospective randomized pilot study with stratification. *Acta Chir Belg*. 1987;87(4):242–6.
51. Lord RSA, Raj TB, Stary DL, Nash PA, Graham AR, Goh KH. Comparison of saphenous vein patch, polytetrafluoroethylene patch, and direct arteriotomy closure after carotid endarterectomy. Part I. Perioperative results. *J Vasc Surg*. 1989;9(4):521–9. [https://doi.org/10.1016/0741-5214\(89\)90467-9](https://doi.org/10.1016/0741-5214(89)90467-9).
52. Katz D, Snyder SO, Gandhi RH, Wheeler JR, Gregory RT, Gayle RG, et al. Long-term follow-up for recurrent stenosis: a prospective randomized study of expanded polytetrafluoroethylene patch angioplasty versus primary closure after carotid endarterectomy. *J Vasc Surg*. 1994;19(2):198–205. [https://doi.org/10.1016/S0741-5214\(94\)70095-8](https://doi.org/10.1016/S0741-5214(94)70095-8).
53. Myers SI, Valentine RJ, Chervu A, Bowers BL, Clagett GP, Texas D. Saphenous vein patch versus primary closure for carotid endarterectomy: long-term assessment of a randomized prospective study. *J Vasc Surg*. 1994;19(1):15–22. [https://doi.org/10.1016/S0741-5214\(94\)70116-4](https://doi.org/10.1016/S0741-5214(94)70116-4).
54. Mannheim D, Weller B, Vahadim E, Karmeli R. Carotid endarterectomy with a polyurethane patch versus primary closure: a prospective randomized study. *J Vasc Surg*. 2002;41:403–7.
55. Clagett GP, Patterson CB, Fisher DF, Fry RE, Eidt JF, Humble TH, et al. Vein patch versus primary closure for carotid endarterectomy. *J Vasc Surg*. 1989;9(2):213–23. [https://doi.org/10.1016/0741-5214\(89\)90040-2](https://doi.org/10.1016/0741-5214(89)90040-2).
56. Aburahma AF, Robinson PA, Mullins DA, Holt SM, Herzog TA, Mowery NT. Frequency of postoperative carotid duplex surveillance and type of closure: results from a randomized trial. *J Vasc Surg*. 2000;32(6):1043–51. <https://doi.org/10.1067/mva.2000.111281>.
57. Aburahma AF, Robinson P, Holt SM, Herzog TA, Mowery NT. Perioperative and late stroke rates of carotid endarterectomy contralateral to carotid artery occlusion results from a randomized trial. *Stroke*. 2000;31(7):1566–71. <https://doi.org/10.1161/01.STR.31.7.1566>.
58. Aburahma AF, Robinson PA, Richmond BK. Reanalysis of factors predicting recurrent stenosis in a prospective randomized trial of carotid endarterectomy comparing primary closure and patch closure. *Vasc Surg*. 2000;34(4):319–29. <https://doi.org/10.1177/153857440003400406>.
59. Ranaboldo CJ, Barros D'Sa AA, Bell PRF, Chant ADB, Perry PM. Randomized controlled trial of patch angioplasty for carotid endarterectomy. *Br J Surg*. 1993;80(12):1528–30. <https://doi.org/10.1002/bjs.1800801211>.
60. Aburahma AF, Robinson PA, Saiedy S, Khan JH, Boland JP. Prospective randomized trial of carotid endarterectomy with primary closure and patch angioplasty with saphenous vein, jugular vein, and polytetrafluoroethylene. *J Vasc Surg*. 1998;27:222–34.
61. Al-Rawi PG, Turner CL, Waran V, Ng I, Kirkpatrick PJ. A randomized trial of synthetic patch versus direct primary closure in carotid endarterectomy. *Neurosurgery*. 2006;59(4):822–9. <https://doi.org/10.1227/01.NEU.0000232640.11438.CO>.
62. AbuRahma AF, Khan JH, Robinson PA, Saiedy S, Short YS, Boland JP, et al. Prospective randomized trial of carotid endarterectomy with primary closure and patch angioplasty with saphenous vein, jugular vein, and polytetrafluoroethylene: perioperative (30-day) results. *J Vasc Surg*. 1996;24(6):998–1007. [https://doi.org/10.1016/S0741-5214\(96\)70045-9](https://doi.org/10.1016/S0741-5214(96)70045-9).
63. Pratesi C, Frullini A, Rega L, Fonda C, Matticari S, Alessi Innocenti A, et al. The follow-up after carotid TEA. In: Trends and controversies. Munich: W Zuckschwerdt; 1986. p. 313–5.
64. Eikelboom BC, Ackerstaff RGA, Ludwig JW, Teeuwen C, Vermeulen FEE, Welten RJT. Benefits of carotid patching: a randomized study. *J Vasc Surg*. 1988;7(2):240–7. [https://doi.org/10.1016/0741-5214\(88\)90142-5](https://doi.org/10.1016/0741-5214(88)90142-5).
65. Letter JAM De, Moll FL, Welten RJT. Benefits of carotid patching: a prospective randomized study with. *Ann Vasc Surg*. 1993;8(1):54–8.
66. Savovic J, Turner RM, Mawdsley D, Jones HE, Beynon R. Systematic reviews and meta- and pooled analyses association between risk-of-bias assessments and results of randomized trials in Cochrane reviews: the ROBES meta-epidemiologic study. *Am J Epidemiol* 2018;187(5):1113–22. <https://doi.org/10.1093/aje/kwx344>.
67. Brott TG, Li RWH, Howard G, Roubin GS, Ph D, Clark WM, et al. Stenting versus endarterectomy for treatment of carotid-artery stenosis. *N Engl J Med*. 2010;363(1):11–23. <https://doi.org/10.1056/NEJMoa0912321>.
68. Murphy SJX, Naylor AR, Ricco J, Sillesen H, Kakkos S, Halliday A. Optimal antiplatelet therapy in moderate to severe asymptomatic and symptomatic carotid stenosis: a comprehensive review of the literature. *Eur J Vasc Endovasc Surg*. 2018;1–16. <https://doi.org/10.1016/j.ejvs.2018.09.018>.
69. Diener H, Sacco RL, Yusuf S, Cotton D, Öunpuu S, Lawton WA, et al. Effects of aspirin plus extended-release dipyridamole versus clopidogrel and telmisartan on disability and cognitive function after recurrent stroke in patients with ischaemic stroke in the prevention regimen for effectively avoiding second strokes (PROFESS) trial: a double-blind, active and placebo-controlled study. *Lancet Neurol*. 2008;7(10):875–84. [https://doi.org/10.1016/S1474-4422\(08\)70198-4](https://doi.org/10.1016/S1474-4422(08)70198-4).
70. Tse D, Hill MD, Coutts SB, Tse D, Hill MD. Early secondary prevention in transient ischemic attack (TIA) and minor stroke. *Curr Neurol Neurosci Rep*. 2019;19(34):1–7. <https://doi.org/10.1007/s11910-019-0950-y>.
71. Marsman MS, Özdemir-van Brunschot DM, Jahrome AK, Veeger NJGM, Schuilting WJ, Van Rooij FG, et al. Case series about the changed antiplatelet protocol for carotid endarterectomy in a teaching hospital: more patients with complications? *Surg J*. 2018;5(4):220–5. <https://doi.org/10.1055/s-0038-1675566>.
72. Wood L, Egger M, Gluud LL, Schulz KF, Altman DG, Ju P, et al. Empirical evidence of bias in treatment effect estimates in. *Br Med J*. 2008;336(7644):601–5. <https://doi.org/10.1136/bmj.39465.451748.AD>.
73. Skoog M, Saarimäki J, Gluud C, Sheinin M, Erlendsson K, Aamdal S, et al. Transparency and registration in clinical research in the Nordic countries. *Nordforsk*. 2015:1–108. https://nta.nordforsk.org/projects/nta_transparency_report.pdf
74. Claire R, Gluud C, Berlin I, Coleman T, Leonardi-bee J. Using trial sequential analysis for estimating the sample sizes of further trials: example using smoking cessation intervention. *BMC Med Res Methodol*. 2020;20(284):1–10.
75. Chan A, Tetzlaff JM, Altman DG, Laupacis A, Gøtzsche PC, Hro A, et al. SPIRIT 2013 Statement: defining standard protocol items for clinical trials. *Ann Intern Med*. 2013;1(158):200–7.
76. Schulz KF, Altman DG, Moher D. CONSORT 2010 Statement: updated guidelines for reporting parallel group randomised trials. *BMJ*. 2010;7(3):c332–c332. <https://doi.org/10.1136/bmj.c332>.

Publisher's Note

Springer Nature remains neutral with regard to jurisdictional claims in published maps and institutional affiliations.

Ready to submit your research? Choose BMC and benefit from:

- fast, convenient online submission
- thorough peer review by experienced researchers in your field
- rapid publication on acceptance
- support for research data, including large and complex data types
- gold Open Access which fosters wider collaboration and increased citations
- maximum visibility for your research: over 100M website views per year

At BMC, research is always in progress.

Learn more biomedcentral.com/submissions

