



Since January 2020 Elsevier has created a COVID-19 resource centre with free information in English and Mandarin on the novel coronavirus COVID-19. The COVID-19 resource centre is hosted on Elsevier Connect, the company's public news and information website.

Elsevier hereby grants permission to make all its COVID-19-related research that is available on the COVID-19 resource centre - including this research content - immediately available in PubMed Central and other publicly funded repositories, such as the WHO COVID database with rights for unrestricted research re-use and analyses in any form or by any means with acknowledgement of the original source. These permissions are granted for free by Elsevier for as long as the COVID-19 resource centre remains active.



# Lymphopenia is associated with severe coronavirus disease 2019 (COVID-19) infections: A systemic review and meta-analysis

Qianwen Zhao<sup>a,1</sup>, Meng Meng<sup>b,1</sup>, Rahul Kumar<sup>c,1</sup>, Yinlian Wu<sup>d</sup>, Jiaofeng Huang<sup>d</sup>, Yunlei Deng<sup>e</sup>, Zhiyuan Weng<sup>f,\*</sup>, Li Yang<sup>a,\*</sup>

<sup>a</sup> Department of Gastroenterology and Hepatology, Sichuan University-Oxford University Huaxi Gastrointestinal Cancer Centre, West China Hospital, Sichuan University, Chengdu, China

<sup>b</sup> Digestion Center, Beijing Hospital of Traditional Chinese Medicine, Capital Medical University, Beijing, China

<sup>c</sup> Department of Gastroenterology and Hepatology, Changi General Hospital, Singapore

<sup>d</sup> Liver Research Center, the First Affiliated Hospitals of Fujian Medical University, Fujian, China

<sup>e</sup> Department of Nephrology, The Third People's Hospital of Chengdu, Chengdu, China

<sup>f</sup> Cardiovascular department, the First Affiliated Hospitals of Fujian Medical University, Fujian, China



## ARTICLE INFO

### Article history:

Received 2 April 2020

Received in revised form 28 April 2020

Accepted 29 April 2020

### Keywords:

COVID-2019

lymphocyte count

lymphopenia

## ABSTRACT

**Objectives:** Coronavirus Disease 2019 (COVID-19) is a new respiratory and systemic disease which needs quick identification of potential critical patients. This meta-analysis aimed to explore the relationship between lymphocyte count and the severity of COVID-19.

**Methods:** A comprehensive systematic literature search was carried out to find studies published from December 2019 to 22 March 2020 from five databases. The language of literatures included English and Chinese. Mean difference (MD) of lymphocyte count in COVID-19 patients with or without severe disease and odds ratio (OR) of lymphopenia for severe form of COVID-19 was evaluated with this meta-analysis. **Results:** Overall 13 case-series with a total of 2282 cases were included in the study. The pooled analysis showed that lymphocyte count was significantly lower in severe COVID-19 patients (MD  $-0.31 \times 10^9/L$ ; 95%CI:  $-0.42$  to  $-0.19 \times 10^9/L$ ). The presence of lymphopenia was associated with nearly threefold increased risk of severe COVID-19 (Random effects model, OR = 2.99, 95% CI: 1.31–6.82).

**Conclusions:** Lymphopenia is a prominent part of severe COVID-19 and a lymphocyte count of less than  $1.5 \times 10^9/L$  may be useful in predicting the severity clinical outcomes.

© 2020 The Author(s). Published by Elsevier Ltd on behalf of International Society for Infectious Diseases. This is an open access article under the CC BY-NC-ND license (<http://creativecommons.org/licenses/by-nc-nd/4.0/>).

## 1. Background

Coronavirus Disease 2019 (COVID-19) is a new form of respiratory disorder caused by severe acute respiratory syndrome coronavirus 2 (SARS-CoV-2) (El Zowalaty and Järhult, 2020). Since its first appearance and reporting in December 2019, it has infected over 462,684 cases and caused 20,834 deaths as of 26<sup>th</sup> March 2020. (WHO Coronavirus disease situation reports). Patients with COVID-19 may develop acute respiratory distress syndrome and occasionally may progress to multiorgan failure (Hui et al., 2020). Latest reports suggest that for COVID-19 the hospitalization rate is

20.7–31.4%, ICU admission rate is 4.9–11.5%, and case-fatality rate is 1.8–3.4% (SOAPCD, 2020). It is expected that COVID-19 will continue to increase and there will be a growing demand for intensive care (Wu et al., 2020a). Quick identification of potential critical patients is important in the management of this disease to prioritize health-care resources, which are under strain in practically every part of the world (Zhao et al., 2020; He et al., 2020).

Cytotoxic T lymphocytes and natural killer cells are necessary for the control of viral infection. A functional exhaustion of antiviral lymphocytes is reported in COVID-19 patients (Zheng et al., 2020a; Alves da Silva et al., 2018). However, there is still limited evidence for the predictive role of lymphocyte count in predicting the severity of COVID-19. Herein, we reviewed all the literature on COVID-19 from December 2019 to 22 March to explore the possible role of lymphocyte counts in differentiating between severe and non-severe COVID-19 patients, so as to find a simple tool for quick identification of potential critical patients that will help with the clinical management of this new disease.

\* Corresponding author.

E-mail addresses: [wengzhiyuan@fjmu.edu.cn](mailto:wengzhiyuan@fjmu.edu.cn) (Z. Weng), [yangli\\_hx@scu.edu.cn](mailto:yangli_hx@scu.edu.cn) (L. Yang).

<sup>1</sup> These three authors contributed equally to this manuscript, and share first authorship.

## 2. Methods

### 2.1. Literature Search and Study Selection

We carried out a comprehensive systematic literature search of online databases, including PubMed, Web of Science, Cochrane, WanFang and CNKI databases from December 2019 to 22 March 2020 to identify all reported case studies in Chinese and English languages. The WanFang and CNKI databases are Chinese databases available online which can be used to find full-text articles. The following terms and their relative variants were used for literature search: “COVID-19” OR “2019 novel coronavirus infection” OR “coronavirus disease 2019” OR “2019 novel coronavirus disease” OR “coronavirus 2019” OR “2019-nCoV” OR “SARS-CoV-2” OR “COVID19” OR “coronavirus disease-19”.

The title, abstract and full text of all documents identified according to this search strategy were then screened by two investigators (M.M and QW.Z). The reference list of each review and original article was reviewed for identifying other eligible reports. The inclusion criteria for the studies to be included in the meta-analysis were as follows: studies presenting the data of lymphocyte counts or information on lymphopenia in COVID-19 cases with or without severe presentation. The definition of severe COVID-19 varied in different literature. In this study we defined the “severe presentation” as a requirement for intensive care, mechanical ventilation or death which is consistent with most articles. All the search results were evaluated according to the Methodological Index Non-Randomized Studies (MINORS) statement.

### 2.2. Data Extraction and Quality Assessment

Data extraction and the evaluation of literature quality were conducted independently by 2 investigators (M.M and QW.Z). A Microsoft Excel database was created to record all available information, including baseline details, and rate of development of primary end point in patients with different respiratory conditions. Any disagreement was resolved by another investigator (ZY.W).

### 2.3. Statistical Analysis of Data

Microsoft Excel was used to analyze the clinical symptoms and the laboratory results. A meta-analysis was carried out using R software (version 3.6.3, available on <https://www.r-project.org>). Heterogeneity among studies was tested using the Cochran Chi-square test and  $I^2$ . When  $I^2 < 50\%$ , a fixed-effects model was used, while when  $I^2 > 50\%$ , a random-effects model was selected. If statistical heterogeneity was found among the results, a further sensitivity analysis was conducted to determine the source of heterogeneity. After the significant clinical heterogeneity was excluded, the randomized effects model was used for meta-analysis. Funnel plots were used to detect publication bias.  $P < 0.05$  was considered as statistical significance.

## 3. Results

### 3.1. Research Selection and Quality Assessment

Based on the described search strategy, a total of 2472 studies were found in the five online databases as described above. After removing the duplicate records, 1596 studies were retained. Furthermore, 1548 studies were excluded as they were not relevant to current meta-analysis. Full text of the remaining 48 articles was assessed for eligibility, and 35 of these were removed for various reasons. Eventually 13 studies (11 in English and 2 in Chinese) [9–20] were included in the analysis (Fig. 1). The characteristics and demographic data of the included studies are shown in Table 1. As

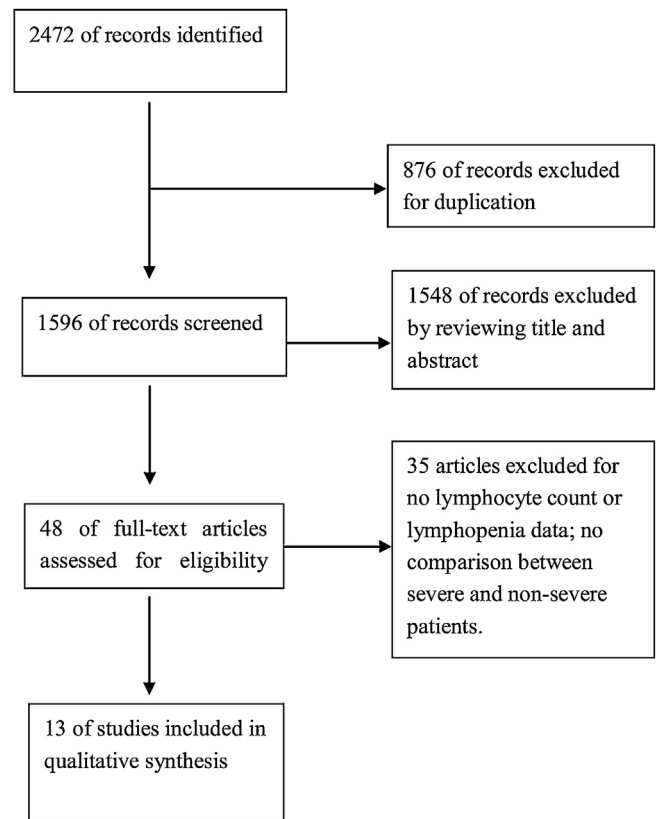


Fig. 1. A flow diagram of the inclusion criteria of studies eligible for meta-analysis.

all the studies included in this meta-analysis were retrospective case-series, the calculation of sample size was not reported. Most studies reported the follow-up period inadequately. As a result, the overall quality of literature included in this study was not high, with MINORS scores from 10–13.

### 3.2. Clinical Data

The characteristics of the included studies are presented in Table 1. The pooled clinical data of 13 studies involving 2282 cases showed that a total of 442 patients required intensive care or ventilatory support, or died. The clinical severity was defined as the composite of ICU admission, use of mechanical ventilation or death as reported in nine studies (Xiaowei et al., 2020; Gao et al., 2020; Liu et al., 2020a; Liu et al., 2020b; Wu et al., 2020b; Wang et al., 2020b; Zhang et al., 2020; Guan W-j et al., 2020; Chen et al., 2020), death only as reported in two studies (Yang et al., 2020; Zhou et al., 2020) and ICU admission as reported in two studies (Wang et al., 2020a; Huang et al., 2020). The blood tests were measured at the time of hospitalization in all studies. Eight studies reported the lymphocyte count (Xiaowei et al., 2020; Gao et al., 2020; Liu et al., 2020a; Wu et al., 2020b; Wang et al., 2020a; Wang et al., 2020b; Zhou et al., 2020; Chen et al., 2020) and one study only reported information of lymphopenia (Guan W-j et al., 2020). The original data was presented as the prevalence of lymphopenia in severe or non-severe COVID-19 patients. To better visualize the risk, we converted the dataset and present the data as the incidence of severe pneumonia in lymphopenia population.

### 3.3. Lymphocyte count and the severity of COVID-19

Twelve studies were included in this meta-analysis (Xiaowei et al., 2020; Gao et al., 2020; Liu et al., 2020a; Liu et al., 2020b; Wu et al.,

**Table 1**  
Characteristics and demographic data of the included studies

author	year	region	district	language	outcome	mean age	male n(%)	Non-Severe Lymphocyte Count: Mean(SD) × 10 <sup>9</sup> /L	Severe Lymphocyte Count: Mean(SD) × 10 <sup>9</sup> /L	Severe cases/total cases –no./total no. (%)	severe cases in lymphopenia/total cases of lymphopenia –no./total no. (%)
X. Chen	2020	China	Chongqing	Chinese	Composite End Point	45.33	76(54.68%)	1.18(0.49)	0.87(0.38)	31/139 (22.30%)	not reported
X. Fang	2020	China	Anhui	Chinese	Composite End Point	45.1	9(20.93%)	1.3(0.61)	0.73(0.55)	24/79 (30.38%)	not reported
Y. Gao	2020	China	Anhui	English	Composite End Point	44.08	26(60.47%)	1.07(0.4)	1.2(0.42)	15/43 (34.88%)	not reported
W. Guan	2020	China	30 provinces	English	Composite End Point	46.67	459(58.12)	not report	not report	67/1099 (6.10%)	50/731 (6.84%)
C. Huang	2020	China	Wuhan	English	ICU	49.33	30(73.17%)	0.93(0.31)	0.47(0.5)	13/41 (31.71%)	11/26 (42.31%)
W. Liu	2020	China	Wuhan	English	Composite End Point	42.67	39(50.00%)	1.02(0.54)	0.66(0.72)	11/78 (14.10%)	not reported
Y. Liu	2020	China	Shenzhen	English	Composite End Point	53.67	8(66.67%)	1.56(0.99)	0.63(0.42)	3/12 (25.00%)	3/6 (50.00%)
C. Wu	2020	China	Wuhan	English	Composite End Point	51.33	128(63.68)	1.08(0.55)	0.72(0.38)	84/201 (41.79%)	not reported
D. Wang	2020	China	Wuhan	English	ICU	55.33	75(54.35%)	0.9(0.45)	0.73(0.31)	36/138 (26.09%)	not reported
Z. Wang	2020	China	Wuhan	English	Composite End Point	46.33	32(46.38%)	1.2(0.42)	0.66(0.48)	14/69 (20.29%)	not reported
X. Yang	2020	China	Wuhan	English	Death	59.7	35(66.67%)	0.74(0.4)	0.62(0.37)	32/52 (61.54)	11/28 (39.29%)
F. Zhou	2020	China	Wuhan	English	Death	56.33	119(62.30)	1.13(0.52)	0.63(0.23)	54/191 (28.27%)	not reported
J. Zhang	2020	China	Wuhan	English	Composite End Point	56.33	71(50.71%)	0.87(0.45)	0.73(0.38)	58/140 (41.43)	46/104 (44.23%)

\* Composite end point in original studies was defined as SpO2 < 90% or requirement of an intensive care or the use of mechanical ventilation, or death.

2020b; Wang et al., 2020a; Wang et al., 2020b; Yanget al., 2020; Zhou et al., 2020; Zhang et al., 2020; Chen et al., 2020). The meta-analysis for the mean difference in lymphocyte count showed an overall significant reduction of  $0.31 \times 10^9/L$  in the severe COVID-19 group compared to the non-severe group (random effects model, CI: -0.42 to -0.19 × 10<sup>9</sup>/L). The overall heterogeneity in this meta-analysis was high ( $I^2 = 76\%$ ;  $p < 0.01$ , Fig. 2A). Sensitivity analysis revealed that this heterogeneity was not a result from an individual study. Funnel plot showed no publication bias in this analysis (Fig. 2B).

### 3.4. Lymphopenia and the severity of COVID-19

Five studies reported the relationship between lymphopenia and the severity of COVID-19(Liu et al., 2020a; Liu et al., 2020b; Wang et al., 2020b; Zhang et al., 2020; Guan W-j et al., 2020). Lymphopenia was defined as a lymphocyte count of less than  $1.1 \times 10^9/L$  in four studies(Liu et al., 2020a; Liu et al., 2020b; Yang et al., 2020; Zhang et al., 2020), and as less than  $1.5 \times 10^9/L$  in one (Guan W-j et al., 2020). The pooled OR as summarized in Fig. 2C shows that the presence of lymphopenia results in an approximately 3-fold increased risk of severe COVID-19 (Random effects model, OR = 2.99, 95% CI: 1.31–6.82). The heterogeneity among the different studies was high ( $I^2 = 60\%$ ,  $p = 0.04$ ). A sensitivity analysis by excluding each study was performed, showing the study from Z. Wang was the major source of heterogeneity. After excluding this study, the  $I^2$  of heterogeneity reduced to 48%, the OR of lymphopenia was 2.17 (95% CI: 1.0126–4.6812). The funnel plot indicated no publication bias inside this study (Fig. 2D).

## 4. Discussion

This meta-analysis included the latest studies of COVID-19 from December 2019 to 22 March 2020 published in the English and Chinese language, showing that patients with severe COVID-19 displayed a lymphocyte count reduction compared with the non-severe COVID-19 group. Lymphopenia, defined as a lymphocyte count of less than  $1.5 \times 10^9/L$ , is associated with a 3-fold increased risk of severe COVID-19 infection.

The lack of awareness of severity of disease in the early stages of COVID-19 coupled with the high infectivity of the virus has led to a dramatic increase in the number of patients and relatively high fatality rates worldwide. A cheap, easily acquired biomarker is needed to identify severe disease among hospitalized patients at early stages. According to our results, lymphocyte count and lymphopenia may serve as a rapid tool that can quickly identify COVID-19 patients with more severe clinical presentation. Previous studies observed that lymphopenia is a common observation in patients with severe acute respiratory syndrome (SARS) caused by SARS virus with reported prevalence of 69.6%–54%(Lee et al., 2003; Booth et al., 2003). Lymphopenia is quite notable in SARS infection(Yang et al., 2004). SARS infection may either directly suppress bone marrow or induce an immune-mediated destruction of lymphocytes resulting in lymphopenia (He et al., 2005). SARS-COV-2 might share a similar inner mechanism with SARS virus, including direct infection and destruction of lymphocytes (Zheng et al., 2020b) and cytokine-mediated lymphocyte destruction (Zheng et al., 2020c; Sarzi-Puttini et al., 2020; Xie and Chen, 2020).

The main drawback of this meta-analysis is the heterogeneity of included cases. All the included studies were retrospective case series as no data from either prospective observation study or randomized trials are available. The patients in different studies might be at different stages of disease. Furthermore, the different definitions of severity of COVID-19 and the discrepancy in the cut-offs for lymphopenia, which can be partially mitigated by

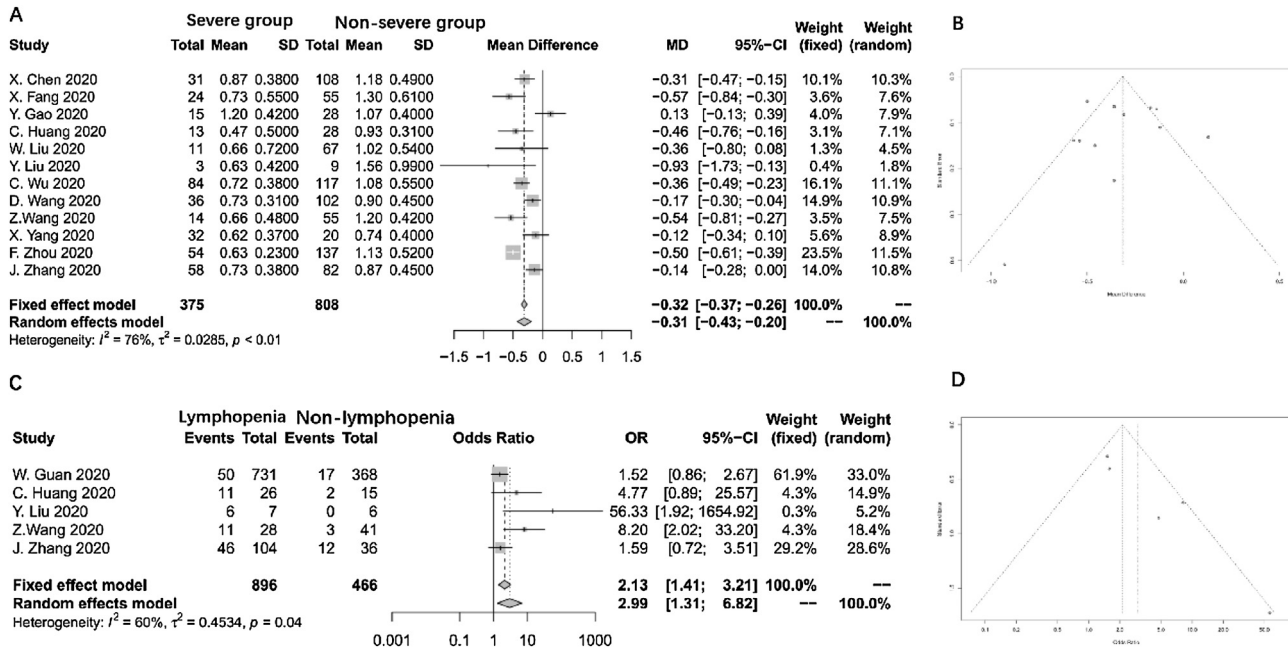


Fig. 2. Forest plot and funnel plot of all outcomes.

considering lymphocyte count of less than  $1.5 \times 10^9/L$  as lymphopenia, might be one of the reasons for the heterogeneity.

In addition, another drawback of our study is that there is no data relating to fluctuations of lymphocyte counts on the disease course, which is significant to the detection of COVID-19 clinical course. So, it is too early to draw the conclusion that lymphopenia is related to deterioration of COVID-19. A recent research study with small sample size showed the dynamic changes of lymphocyte counts could predict the deterioration of COVID-19, yet studies with large sample size are still lacking in this field(Tan et al., 2020).

Due to the extremely rapid spread of COVID-19 worldwide, waiting for the results from prospective studies will delay the understanding of this novel disease, as a result of which there may be a delay in the clinical management of patients. Even in light of these limitations, the result of this meta-analysis show that the presence of lymphopenia in the evolution of COVID-19 may help to rapidly identify patients at risk of severe pneumonia and worse outcomes. Further studies should focus on the time-line of lymphopenia development, severity of COVID-19 and ARDS, which may confirm our findings about the relationship between lymphopenia and severity of COVID-19.

### 5. Conclusion

Lymphopenia is a prominent part of severe COVID-19 and a lymphocyte count of less than  $1.5 \times 10^9/L$  may be useful in predicting the severity of clinical outcomes. Further studies are needed to focus on lymphocyte changes in COVID-19 to confirm the predictive ability of lymphopenia in COVID-19.

### Declarations

**Ethics:** the study does not require ethical approval because the meta-analysis is based on published research and the original data are anonymous.

Consent for publication: Not applicable.

Availability of data and materials: All data are fully available on line without restriction.

### Competing interests

The authors declare that they have no competing interests.

### Funding Source

Scientific research “Pei Yu” project of Beijing Municipal Hospital Administration (PZ2018011)

### Author Contributions

Guarantor of the article: Li Yang and Zhiyuan Weng; Designed the study: Li Yang and Zhiyuan Weng; Interpreted data and wrote the manuscript: Qianwen Zhao and Rahul Kumar; Screened and extracted data: Qianwen Zhao and Meng Meng; Statistical analyses: Zhiyuan Weng; Reviewed the results and made critical comments on the manuscript: Ningfang Lian, Rahul Kumar, Yunlei Deng, Jiaofeng Huang and Yinlian Wu; All authors approved the final version of the manuscript.

### Acknowledgments

Not applicable.

### References

El Zowalaty ME, Järhult JD. From SARS to COVID-19: A previously unknown SARS-related coronavirus (SARS-CoV-2) of pandemic potential infecting humans - Call for a One Health approach. *One health (Amsterdam, Netherlands)* 2020;9:100124.

Hui DS, Azhar IE, Madani TA, et al. The continuing 2019-nCoV epidemic threat of novel coronaviruses to global health - The latest 2019 novel coronavirus outbreak in Wuhan, China. *Int J Infect Dis* 2020;91:264–6.

Severe Outcomes Among Patients with Coronavirus Disease 2019 (COVID-19) - United States, February 12–March 16, 2020. *MMWR Morb Mortal Wkly Rep* 2020; 69:343–6.

Wu D, Wu T, Liu Q, Yang Z. The SARS-CoV-2 outbreak: What we know. *Int J Infect Dis* 2020a;94:44–8.

Zhao Q, Meng M, Kumar R, et al. The impact of COPD and smoking history on the severity of Covid-19: A systemic review and meta-analysis. *Journal of medical virology* 2020;.

He F, Deng Y, Li W. Coronavirus disease 2019: What we know?. *Journal of medical virology* 2020;.

- Zheng M, Gao Y, Wang G, et al. Functional exhaustion of antiviral lymphocytes in COVID-19 patients. *Cell Mol Immunol* 2020a;.
- Alves da Silva R, de Souza Todão J, Kamitani FL, et al. Molecular characterization of hepatitis C virus in end-stage renal disease patients under hemodialysis. *Journal of medical virology* 2018;90:537–44.
- Xiaowei F, Qing M, Lei Z, et al. Clinical features and treatment analysis of 79 Coronavirus infected pneumonia. *Chinese Pharmacological Bulletin* 2020;36:12–8.
- Gao Y, Li T, Han M, et al. Diagnostic Utility of Clinical Laboratory Data Determinations for Patients with the Severe COVID-19. *J Med Virol* 2020;.
- Liu W, Tao ZW, Lei W, et al. Analysis of factors associated with disease outcomes in hospitalized patients with 2019 novel coronavirus disease. *Chin Med J (Engl)* 2020a;.
- Liu Y, Yang Y, Zhang C, et al. Clinical and biochemical indexes from 2019-nCoV infected patients linked to viral loads and lung injury. *Sci China Life Sci* 2020b;63:364–74.
- Wu C, Chen X, Cai Y, et al. Risk Factors Associated With Acute Respiratory Distress Syndrome and Death in Patients With Coronavirus Disease 2019 Pneumonia in Wuhan, China. *JAMA Intern Med* 2020b;.
- Wang D, Hu B, Hu C, et al. Clinical Characteristics of 138 Hospitalized Patients With 2019 Novel Coronavirus-Infected Pneumonia in Wuhan, China. *JAMA* 2020a;.
- Wang Z, Yang B, Li Q, Wen L, Zhang R. Clinical Features of 69 Cases with Coronavirus Disease 2019 in Wuhan, China. *Clin Infect Dis* 2020b;.
- Yang X, Yu Y, Xu J, et al. Clinical course and outcomes of critically ill patients with SARS-CoV-2 pneumonia in Wuhan, China: a single-centered, retrospective, observational study. *The Lancet Respiratory medicine* 2020;.
- Zhou F, Yu T, Du R, et al. Clinical course and risk factors for mortality of adult inpatients with COVID-19 in Wuhan, China: a retrospective cohort study. *Lancet* 2020;.
- Zhang JJ, Dong X, Cao YY, et al. Clinical characteristics of 140 patients infected with SARS-CoV-2 in Wuhan, China. *Allergy* 2020;.
- Guan W-j, Ni Z-y, Hu Y, et al. Clinical Characteristics of Coronavirus Disease 2019 in China. *New England Journal of Medicine* 2020;.
- Chen Xi, Tong Jin, Xiang Jianhua, Hu Jingjing. Retrospective study on the epidemiological characteristics of 139 patients with novel coronavirus pneumonia on the effects of Severity. *Chongqing Medicine* 2020;1–9.
- Huang C, Wang Y, Li X, et al. Clinical features of patients infected with 2019 novel coronavirus in Wuhan, China. *Lancet* 2020;395:497–506.
- Lee N, Hui D, Wu A, et al. A major outbreak of severe acute respiratory syndrome in Hong Kong. *N Engl J Med* 2003;348:1986–94.
- Booth CM, Matukas LM, Tomlinson GA, et al. Clinical features and short-term outcomes of 144 patients with SARS in the greater Toronto area. *Jama* 2003;289:2801–9.
- Yang M, Li CK, Li K, et al. Hematological findings in SARS patients and possible mechanisms (review). *Int J Mol Med* 2004;14:311–5.
- He Z, Zhao C, Dong Q, et al. Effects of severe acute respiratory syndrome (SARS) coronavirus infection on peripheral blood lymphocytes and their subsets. *Int J Infect Dis* 2005;9:323–30.
- Zheng HY, Zhang M, Yang CX, et al. Elevated exhaustion levels and reduced functional diversity of T cells in peripheral blood may predict severe progression in COVID-19 patients. *Cell Mol Immunol* 2020b;.
- Zheng M, Gao Y, Wang G, et al. Functional exhaustion of antiviral lymphocytes in COVID-19 patients. *Cell Mol Immunol* 2020c;.
- Sarzi-Puttini P, Giorgi V, Sirotti S, et al. COVID-19, cytokines and immunosuppression: what can we learn from severe acute respiratory syndrome?. *Clin Exp Rheumatol* 2020;.
- Xie M, Chen Q. Insight into 2019 novel coronavirus - An updated interim review and lessons from SARS-CoV and MERS-CoV. *Int J Infect Dis* 2020;94:119–24.
- Tan L, Wang Q, Zhang D, et al. Lymphopenia predicts disease severity of COVID-19: a descriptive and predictive study. *Signal Transduct Target Ther* 2020;5:33.