

## Research Article

# Antidepressive-Like Property of Dichloromethane Fraction of *Pimenta pseudocaryophyllus* and Relevance of Monoamine Metabolic Enzymes

James Oluwagbamigbe Fajemiroye,<sup>1</sup> José Luís Rodrigues Martins,<sup>1</sup> Paulo César Ghedini,<sup>1</sup> Pablinny Morreira Galdino,<sup>2</sup> Joelma Abadia Marciano de Paula,<sup>3</sup> José Realino de Paula,<sup>4</sup> Fabio Fagundes Da Rocha,<sup>5</sup> and Elson Alves Costa<sup>1</sup>

<sup>1</sup> Department of Physiological Sciences, Federal University of Goiás, Campus Samambaia, 74001-970 Goiânia, GO, Brazil

<sup>2</sup> Laboratory of Neuropharmacology, Department of Pharmacology, CEP 88040-970 BLOC D CCB, Federal University of Santa Catarina, UFSC, Florianópolis, SC, Brazil

<sup>3</sup> Sciences and Technology Unit, Goiás State University, BR 153, No. 3105, CEP 75132-903, Fazenda Barreiro do Meio, Anápolis, GO, Brazil

<sup>4</sup> Faculty of Pharmacy, Federal University of Goiás, Setor Universitário, CEP 74001-970 Goiânia, GO, Brazil

<sup>5</sup> Department of Physiological Sciences, Institute of Biology, Federal Rural University of Rio de Janeiro, BR465, km 07, Seropédica, 23890-000 Rio de Janeiro, RJ, Brazil

Correspondence should be addressed to Elson Alves Costa; [xico@icb.ufg.br](mailto:xico@icb.ufg.br)

Received 29 September 2012; Revised 6 December 2012; Accepted 6 December 2012

Academic Editor: David Mischoulon

Copyright © 2013 James Oluwagbamigbe Fajemiroye et al. This is an open access article distributed under the Creative Commons Attribution License, which permits unrestricted use, distribution, and reproduction in any medium, provided the original work is properly cited.

*Pimenta pseudocaryophyllus* popularly referred to as craveiro is considered as a calming agent in different local preparations. The present study attempted to examine antidepressant-like effect of dichloromethane fraction (DF) and role of monoamine oxidase (MAO), tryptophan, and tyrosine hydroxylase. Based on the research focus, tail suspension (TS), forced swimming (FS), and open field (OF) tests were conducted after oral administration of DF (125, 250, or 500 mg/Kg). Ex vivo assay of MAO was also conducted to evaluate inhibitory effect of DF (250 mg/Kg). Administration of DF elicits antidepressant-like response in the TS and FS. However, DF 500 mg/Kg did not alter mice performance in these models. The data obtained in the OF showed a reduction in total crossing and rearing activity; these effects suggest motor interference in TS and FS performance. Mice pretreatment with p-chlorophenylalanine methyl ester (PCPA) (100 mg/kg, i.p.—serotonin biosynthesis inhibitor) for 4 consecutive days or acute administration of  $\alpha$ -methyl-p-tyrosine (AMPT) (100 mg/kg, i.p.—catecholamine synthesis inhibitor) blocked anti-immobility effect of DF in the FS. In ex vivo assay of MAO, DF did not inhibit catabolic activity of MAO. Our findings support antidepressant-like activity of DF and suggest an effect that depends on monoamine biosynthesis.

## 1. Introduction

*Pimenta pseudocaryophyllus* (Gomes) L.R. of Myrtaceae family is popularly known as “craveiro-do-mato,” “craveiro,” “louro-cravo,” “cataia,” “chá-de-bugre,” and “louro” and “pau-cravo” [1, 2]. The genus *Pimenta* consists of approximately 15 known species of which only *Pimenta pseudocaryophyllus* occurs in Brazilian flora. Popular applications (tranquilizer, nerve tonic, cold relief, diuretic, aphrodisiac, digestive, and

menstrual problems) of its leaf extract in different preparations have been reported especially in the county of Campos do Jordão, São Paulo, Brazil [1–6].

Previous neuropharmacological screening of essential oil, ethanolic leaf extract, and active fractions of the *Pimenta pseudocaryophyllus* leaf demonstrated behavioural alterations in the open field, elevated plus maze, light dark box, and barbiturate sleep induction tests without any form of motor incoordination [7–9]. Evaluation of the antidepressive-like

property of dichloromethane fraction (DF) of *Pimenta pseudocaryophyllus* is borne out of its anxiolytic property that has been associated with monoaminergic receptor [8].

The hypothesis of biogenic amine involvement in depression has produced several generations of antidepressant agents (monoamine oxidase inhibitors (MAOIs), tricyclic antidepressants (TCAs), selective serotonin reuptake inhibitors (SSRIs), selective noradrenaline reuptake inhibitor (SNRI), and atypical antidepressants among others). The fact that clinical responses to drug effects take weeks of sustained treatment [10] and occurrence of plethora of side effects make discovery of new compounds inevitable. Meanwhile, considering the fact that conventional antidepressant and natural products have demonstrated efficacy in the clinical treatment and experimental model of anxiety [11–20], anxiolytic-like property of dichloromethane fraction obtained from ethanolic leaf extract of *Pimenta pseudocaryophyllus* makes evaluation of its antidepressant effect imperative.

Thus, we hypothesize that the efficacy of aforementioned antidepressive drugs or natural products to treat anxiety or vice versa is a function of the active principles in these compounds and underlining mechanism of their neuropharmacological action. In this manner, the aim of this study was to investigate antidepressant-like property of DF on mice and involvement of metabolic enzymes (tryptophan hydroxylase (TrOH), tyrosine hydroxylase (TOH), and monoamine oxidase (MAO)).

## 2. Material and Methods

**2.1. Preparation of DF and Phytoconstituent Analysis by HPLC.** The leaf collection, identification, voucher specimen (herbarium) deposit, extraction, and partitioning of ethanolic leaf extract to obtain DF as well as qualitative and quantitative analysis of this fraction by HPLC were achieved following the procedure described in our previous work [8].

**2.2. Animals.** Male albino Swiss mice (30±5 g) were provided by Central Animal House of Federal University of Goiás (UFG). They were housed under controlled environmental conditions (22 ± 3°C, 12 h light/dark cycle) and allowed free access to standard food and water. All experimental procedures were conducted with strict adherence to the regulations of ethical principles in animal research as adopted by the Brazilian society of laboratory animal science. The experimental protocol was approved by research ethic council of the Federal University of Goiás (no. 104/08).

**2.3. Drugs and Administration.** p-Chlorophenylalanine methyl ester (PCPA, 100 mg/kg) and  $\alpha$ -methyl-p-tyrosine (AMPT, 100 mg/kg) used to deplete monoamine (indoleamine and catecholamine, resp.) were administered intraperitoneally to groups of mice; imipramine (IMI, 30 mg/kg), diazepam (DZP, 5 mg/kg, Cristália, Brazil), clorgyline 15 mg/kg (an irreversible and selective inhibitor of monoamine oxidase A), and tranylcypromine 15 mg/kg (a non-selective and irreversible inhibitor of monoamine oxidase) used as standard drug were dissolved in 0.9% saline, dichlo-

romethane fraction (DF, 125 to 500 mg/kg) was dissolved in vehicle (2% polyoxyethylene sorbitan monooleate in 0.9% saline) while control animals received appropriate equivalent vehicle. Oleanolic acid (Sigma, EUA) was used as a standard for HPLC analysis of DF. All solutions were freshly prepared on test days and administered (10 mL/kg of mice body weight).

### 2.4. Pharmacological Procedure

**2.4.1. Tail Suspension Test (TS).** According to the method described by Steru and his collaborators [21], duration of immobility following DF treatment was measured over 6 min of TS. In this model, mice were suspended 50 cm above the floor by adhesive tape placed approximately 1 cm from the tip of the tail. Mice were treated orally with DF (125, 250, or 500 mg/kg), IMI 30 mg/kg, or vehicle prior to TS.

**2.4.2. Forced Swimming Test (FS).** Assessment of antidepressant-like effect of DF was conducted in FS. Pretrial exposure (15 min, 24 h prior to the test) of mice to this apparatus was followed by a 6 min test period during which scoring of immobility time was realized. The FS was realized following the treatment procedure under Section 2.4.1 and placement of mice in a cylinder (42 cm high, 18 cm in diameter) filled with water (24°C) up to 30 cm. Experimental subject was considered to be immobile when it ceased struggling and making minimum movements necessary to keep afloat [22]. In subsequent experiment mice were pretreated intraperitoneally with, 0.9% saline, PCPA 100 mg/kg for four consecutive days, or AMPT 100 mg/kg 4 hours prior to the oral administration of vehicle, DF (250 mg/kg), or IMI 30 mg/kg and were subjected to forced-swimming test to examine the effects of indoleamine or catecholamine depletion, respectively.

**2.4.3. Open-Field Test (OF).** Mice were individually placed at the centre of the open field apparatus in a sound proof experimental room to measure rearing and locomotor activity during 5 min after oral administration of vehicle, DF (500 mg/kg), or DZP (5 mg/kg). The floor of the OF is divided into 8 sectors of equal area. The number of crossing and rearing was registered for further statistical analysis. The apparatus was cleaned with 10% alcohol after mouse exposure.

**2.4.4. Ex Vivo MAO Assay by Spectrophotometric Method.** Mice were treated acutely with DF (250 mg/kg), clorgyline 15 mg/kg (a selective inhibitor of MAO-A), or tranylcypromine 15 mg/kg (a nonselective and irreversible inhibitor of monoamine oxidase) and sacrificed by decapitation after 60 min. Brain tissues homogenates were prepared according to [23] and stored under -20°C in aliquots and used as the source of MAO within 48 h. Enzymatic activity was measured according to [24]. Protein concentration was estimated by using Bradford method [25].

**2.5. Statistical Analysis.** In order to compare level of significance between two groups, unpaired Student's *t*-test was used as described by Drummond and Tom [26, 27]. To

compare more than two groups, we used ANOVA followed by Dunnett's test to compare test with control group or Student-Newman-Keuls to compare all pairs of means. All values of  $P < 0.05$  were considered to be significant.

### 3. Results

The chromatograms in Figure 1(a) (sample DF) and Figure 1(b) (reference drug, oleanolic acid) showed relative composition of oleanolic acid (OA) to be 7.82% with respect to the concentration of DF injected (relative composition of OA =  $[(Cr \times As \times 100) \div (Cs \times Ar)\%]$  where Cr is concentration of reference drug, Ar is area under reference drug curve, Cs is concentration of sample, As is area under sample curve). In the pharmacological tests; like imipramine (30 mg/kg), DF (125 or 250 mg/kg) significantly reduced immobility in the TS and FS as shown in Figures 2(a) and 2(b), respectively. As shown in Figures 3(a) and 3(b), DF 500 mg/kg and diazepam (DZP 5 mg/kg) altered the number of crossings ( $*P < 0.05$  and  $**P < 0.01$ , resp.) and rearings ( $*P < 0.05$  and  $**P < 0.01$ , resp.) in the open-field test (OF) significantly when compared with the vehicle treated group. Reduction in these parameters is an indication of motor incoordination by DF 500 mg/kg or DZP 5 mg/kg treatment. Effect of biosynthetic enzymes inhibition that result in indoleamine (serotonin) depletion was shown in the FS with p-chlorophenylalanine methyl ester (PCPA 100 mg/kg, i.p.) pretreatment for four consecutive days followed by acute oral administration of vehicle, DF (250 mg/kg) or imipramine (30 mg/kg) as described under Section 2.4.2. Figure 4(a) showed a reduction in antidepressant-like effect of DF ( $\#P < 0.001$ ) with PCPA pretreatment. Administration of this tryptophan hydroxylase (TrOH) inhibitor alone did not elicit significant behavioural alteration in the FS. Similar observation was made with the  $\alpha$ -methyl-p-tyrosine (AMPT 100 mg/kg, i.p.) pretreatment, an inhibitor of tyrosine hydroxylase (TOH), the rate-limiting enzyme for catecholamine biosynthesis, administered 4 h before the FS. Figure 4(b) shows blockade of DF anti-immobility effect by AMPT ( $\#P < 0.05$ ). Effect of DF on brain MAO as investigated showed, unlike clorgyline and tranylcypromine that reduced MAO activities to  $17.7 \pm 6.4\%$  ( $P < 0.001$ ) and  $47 \pm 9.0\%$  ( $P < 0.01$ ), respectively, its ineffectiveness to inhibit MAO activity ( $103.7 \pm 8.8\%$ ,  $P > 0.05$ ). With this result, it is obvious that DF do not have inhibitory effect on any of the MAO isoforms (A and B).

### 4. Discussion

Previous phytochemical analysis of the fractions obtained through liquid-liquid partitioning of the ethanol leaf extract of *P. pseudocaryophyllus* showed the presence of triterpenes, flavonoids, besides the (E)-methyl isoeugenol which constitute almost all of the essential oil (approximately 94%) [28]. In the dichloromethane fraction (DF), notable phytoconstituents identified with appropriate standards are oleanolic acid and methyl isoeugenol as earlier reported [8]. Being one of the major phytoconstituents found and isolated,

quantitative analysis of oleanolic acid showed a relative composition of approximately 8%. Meanwhile, estimation of DF doses administered in present study is based on its effective dose in previously published [8] and unpublished data.

The neuropharmacological activity of dichloromethane fraction (DF) had been demonstrated and was associated with the involvement of serotonergic pathway [8]. As earlier stated, investigation of antidepressant-like effects of DF is partly reinforced with the hypothesis that anxiolytic property of DF could be linked with its putative antidepressant action. In order to screen antidepressant effect of DF, tail suspension test (TS) was conducted. TS is a predictive and well-established animal model of antidepressant activity [21] that permits investigation of anti-immobility property of a novel molecule. Significant reduction in immobility time in TS and consistent reduction of this parameter in the forced swimming tests can be associated with antidepressant-like effect of this fraction. These results are similar to those obtained with imipramine treatment (norepinephrine/serotonin reuptake inhibitor) that is known to elicit an antidepressant response in FS [29]. FS remains one of the most effective and widely acceptable preclinical animal models [22, 30].

Acute treatment with the standard drug or DF seems not to satisfy the aspect of face validity in this test considering the notion that therapeutic actions of antidepressant drugs evolve gradually with chronic treatment [31–33]. However, preliminary study showed that anti-immobility activity of DF at the doses tested in this work was not significantly different as compared to the chronic treatment (data not shown). This may be of clinical benefit as cases of nonadherence and risk attached to chronic treatment can be drastically reduced. In contrary to the position of some authors that immobility is an adaptive coping mechanism to conserve energy [34, 35], we share the opinion that immobility reflects behavioural despair and is a reliable means of demonstrating predictive validity [36, 37].

The insinuations of acquisition of anxiolytic properties by antidepressants following chronic administration [38] may not truly represent the cellular processes involved. In this study, we were able to show in contrast to this assertion antidepressant effect of DF (a fraction that has shown anxiolytic-like property) with an acute treatment. In essence, this result can be attributed to the presence of active principles that are capable of eliciting antidepressant-like activity. Oleanolic acid among other constituents may have played a role in this activity as there are reports that demonstrated antidepressant effect of some triterpenes [39, 40] and linked oleanolic acid to CNS-mediated antinociceptive effect [41].

However, the intriguing nature of DF 500 mg/kg (highest dose) insignificance effect in antidepressant models (TS and FS) led us to its evaluation in the open field. In this animal model, parameters (locomotor activity and rearing, which some authors considered as vertical movement) that are susceptible to the effects of myorelaxant or sedative agent were evaluated to augment information obtained on antidepressant models. Interestingly, reduction in these parameters as a result of DF 500 mg/kg administration is an indication of motor incoordination. Moreover, CNS stimulatory effect

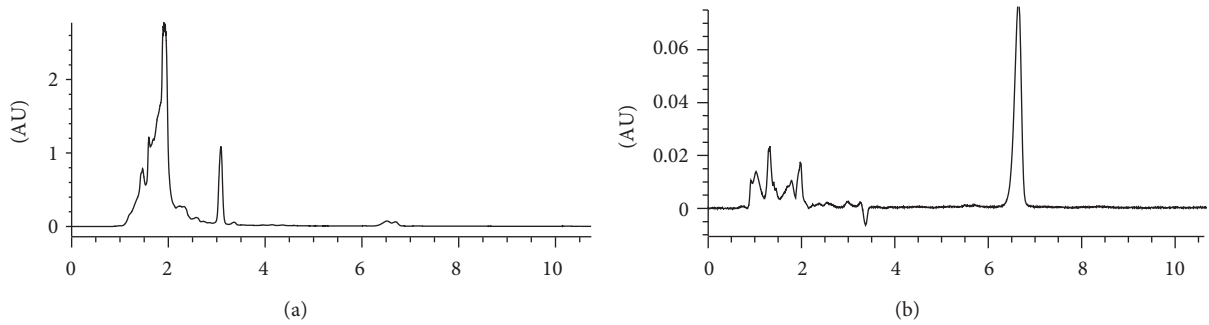


FIGURE 1: HPLC chromatogram showing (a) oleanolic acid peak detected in dichloromethane fraction of *Pimenta pseudocaryophyllus* and (b) reference drug (oleanolic acid, Sigma).

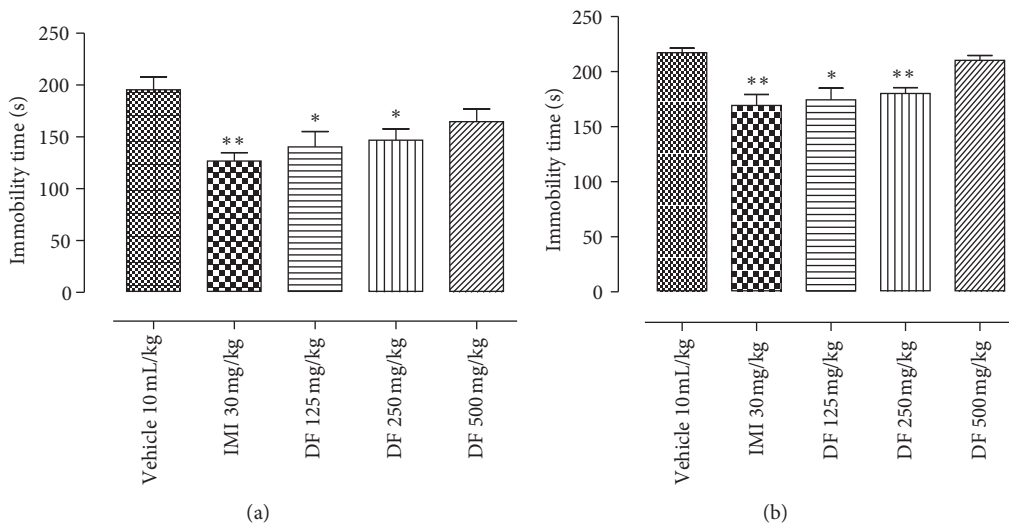


FIGURE 2: The effect of dichloromethane fraction (DF), imipramine (IMI), or vehicle administration on the immobility (a) in the TS; (b) FS. Data are presented as mean of immobility time in seconds  $\pm$  S.E.M. ( $n = 10$ ). All differences from the control group are considered to be significant at  $P < 0.05$ , or  $P < 0.01$  as denoted by \* or \*\*, respectively. Except for control group, lack of symbol \* on the bar indicates  $P > 0.05$ .

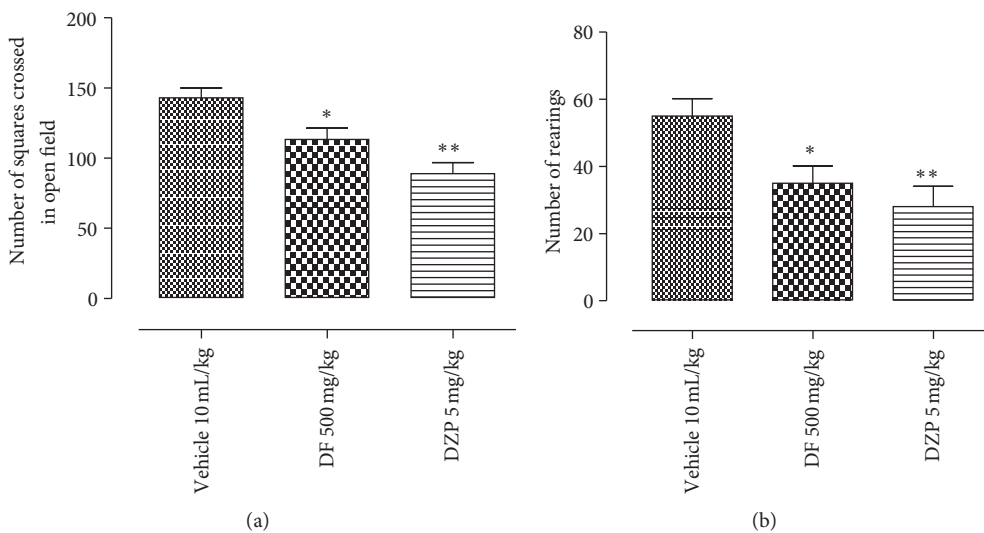


FIGURE 3: Effect of dichloromethane fraction (DF), diazepam (DZP), or vehicle oral treatments in the open-field test. Values are expressed as mean  $\pm$  S.E.M ( $n = 10 \pm 2$ ).



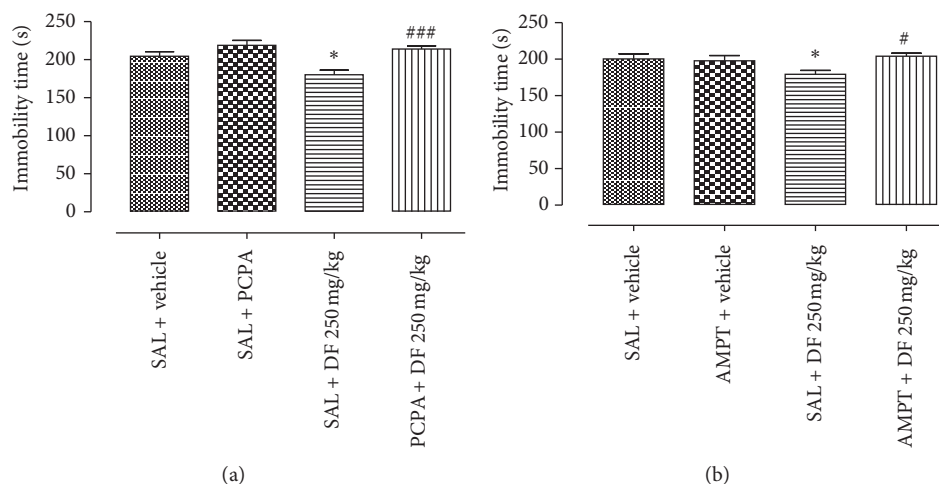


FIGURE 4: The effect of dichloromethane fraction (DF), imipramine (IMI), or vehicle administration on the immobility after pretreatment with (a) PCPA 100 mg/kg; (b) AMPT 100 mg/kg in FS. Data are presented as mean of immobility time in seconds  $\pm$  S.E.M. ( $n = 10 \pm 2$ ). All differences from the control group are considered to be significant at  $P < 0.05$  or  $P < 0.01$  as denoted by \* or \*\*, respectively, while # ( $P < 0.05$ ) or ### (0.001) represents reversion of anti-immobility effect by PCPA or AMPT pretreatments. Except for control group, lack of symbol \* or # on the bar indicates  $P > 0.05$ .

is also one of the commonly found false positive effects of natural or synthetic product in these models. However, previous results [8, 9] did not show any form of motor alteration (psychostimulatory or sedative) after DF 250 mg/kg oral treatment.

In an attempt to investigate possible mechanism of action involved, biosynthetic enzymes was hypothesized to influence the synaptic level of monoamine. Metabolic activities of cytosolic enzymes like tryptophan hydroxylase (TrOH) and tyrosine hydroxylase (TOH) indirectly influence monoaminergic transmission. TrOH and TOH are rate limiting enzymes in serotonin and norepinephrine synthesis, respectively. Evidences in the literature showed that inhibition of norepinephrine and serotonin synthetic enzymes blocked antidepressant effect of desipramine or fluoxetine, respectively, and elicit a rapid return of symptoms in depressed patients [42, 43]. Serotonin and noradrenaline depletion approach has been utilized [44] in animal model to elicit depressive-like behaviour. Mice were depleted of serotonin with the parachlorophenylalanine (PCPA) (tryptophan hydroxylase inhibitor) for 4 days [45] while  $\alpha$ -methyl-p-tyrosine (AMPT) was used to deplete catecholamine storage [43, 46]. Pretreatment with these biosynthetic enzymes inhibitors in this research abolished antidepressant-like response to DF treatment. These results are in agreement with the results in the literature that showed increase in affective disorder symptoms due to inhibition of monoamine synthesis by PCPA and AMPT [47, 48].

Reduction in immobility time in this research is a reflection of an increase in swimming and struggling. According to Millan [49], dual norepinephrine and serotonin reuptake inhibitors may produce persistent effects on both noradrenergic and serotonergic neurotransmission for greater efficacy and a more rapid onset of action. Anti-immobility response which could be regarded as a measure of physiological

alterations to acute DF treatment may be associated with the development of synergy among neural pathways.

Moreover, activity of drugs on MAO has been employed in the treatment of depression. In the treatment of this neural disease, monoamine oxidase inhibitors especially MAO A inhibitors (clorgyline, moclobemide) have proved to be more effective compared to MAO B inhibitor-like selegiline [50, 51]. MAO A is acknowledged for its preferential catabolic activity on 5-HT and NE (substrate). Research has also demonstrated antidepressant action of vast number of medicinal plant extracts among which is *Hypericum perforatum* that inhibits monoamine oxidase (A and B) [52]. Unlike DF-treated group, data obtained on MAO ex vivo assay showed significant reduction in enzymatic activity with the clorgyline and tranylcypromine treatment as compared to the vehicle treated group. Based on the experimental data and standard drugs used (clorgyline 15 mg/kg, an irreversible and selective inhibitor of monoamine oxidase A [53] and tranylcypromine 15 mg/kg, a nonselective and irreversible inhibitor of monoamine oxidase (MAO) [54]), we can infer that DF is not an effective inhibitor of MAO.

In conclusion this work reveals antidepressant-like property of dichloromethane fraction and integrates new findings of possible mechanisms underlining antidepressant action with a growing body of evidence on vital role of monoamine biosynthetic enzyme. Subsequent preclinical study will be focused on active principles that are responsible, toxicological study, and dose extrapolation for possible clinical trial.

## Acknowledgments

This research was supported with grants provided by CAPES, FAPEG, and FUNAPE-UFG.

## References

- [1] L. R. Landrum, "Monography 45: campomanesia, pimenta, blepharocalyx, legrandia, acca, myrrhinium, and luma (Myrtaceae)," *Flora Neotropica*, vol. 4, pp. 72–115, 1986.
- [2] L. R. Landrum and M. L. Kawasaki, "The genera of Myrtaceae in Brazil: an illustrated synoptic treatment and identification keys," *Brittonia*, vol. 49, no. 4, pp. 508–536, 1997.
- [3] M. Nakaoka-Sakita, O. T. Aguiar, M. Yatagai, and T. Igarashi, "Óleo essencial de Pimenta pseudocaryophyllus var. pseudocaryophyllus (Gomes) Landrum (Myrtaceae) I: cromatografia a gás/espectrometria de massa (CC/EM)," *A Revista do Instituto Florestal*, vol. 6, pp. 53–61, 1994.
- [4] M. E. L. Lima, I. Cordeiro, M. C. M. Young, M. E. G. Sobra, and P. R. H. Moreno, "Antimicrobial activity of the essential oil from two specimens of Pimenta pseudocaryophyllus (Gomes) L.R. Landrum (Myrtaceae) native from São Paulo State-Brazil," *Pharmacologyonline*, vol. 3, pp. 589–593, 2006.
- [5] J. A. M. Paula, J. R. Paula, M. T. F. Bara, M. H. Rezende, and H. D. Ferreira, "Pharmacognostic study about Pimenta pseudocaryophyllus (Gomes) L. R. Landrum leaves-Myrtaceae," *Revista Brasileira de Farmacognosia*, vol. 18, no. 2, pp. 265–278, 2008.
- [6] B. C. B. dos Santos, J. C. T. da Silva, P. G. Guerrero, G. G. Leitão, and L. E. S. Barata, "Isolation of chavibetol from essential oil of Pimenta pseudocaryophyllus leaf by high-speed counter-current chromatography," *Journal of Chromatography A*, vol. 1216, no. 19, pp. 4303–4306, 2009.
- [7] J. O. Fajemiroye, E. S. Araujo, P. M. Galdino et al., "Alterações comportamentais induzidas pelo óleo essencial extraído das folhas de Pimenta pseudocaryophyllus (Gomes) L. R. Landrum," in *XXI Simpósio de Plantas Medicinais do Brasil. Plantas Medicinais*, vol. 121, Utilização e Conservação, Avanços, Brasil, 2010.
- [8] J. O. Fajemiroye, P. M. Galdino, S. F. Alves et al., "Involvement of 5-HT1A in the anxiolytic-like effect of dichloromethane fraction of Pimenta pseudocaryophyllus," *Journal of Ethnopharmacology*, vol. 3, pp. 872–877, 2012.
- [9] J. O. Fajemiroye, J. L. R. Martins, A. F. Brito, J. A. M. Paula, J. R. Paula, and E. A. Costa, "Neuropharmacological activity of Pimenta pseudocaryophyllus (Gomes) L.R. Landrum," *Planta Medica*, vol. 77, p. 1401, 2011.
- [10] P. Blier, "The pharmacology of putative early-onset antidepressant strategies," *European Neuropsychopharmacology*, vol. 13, no. 2, pp. 57–66, 2003.
- [11] M. M. Antony, "Assessment and treatment of social phobia," *Canadian Journal of Psychiatry*, vol. 42, pp. 826–834, 1997.
- [12] D. V. Sheehan and C. G. Mao, "Paroxetine treatment of generalized anxiety disorder," *Psychopharmacology Bulletin*, vol. 37, pp. 64–75, 2003.
- [13] J. Zohar and H. G. Westenberg, "Anxiety disorders: a review of tricyclic antidepressants and selective serotonin reuptake inhibitors," *Acta Psychiatrica Scandinavica*, supplement 403, pp. 39–49, 2000.
- [14] O. Kalus, G. M. Asnis, E. Rubinson et al., "Desipramine treatment in panic disorder," *Journal of Affective Disorders*, vol. 21, no. 4, pp. 239–244, 1991.
- [15] W. Katon, "Panic disorder: epidemiology, diagnosis, and treatment in primary care," *Journal of Clinical Psychiatry*, vol. 47, pp. 21–30, 1986.
- [16] M. W. Jann and N. M. Kurtz, "Treatment of panic and phobic disorders," *Clinical Pharmacy*, vol. 6, pp. 947–962, 1987.
- [17] M. H. Trivedi, A. J. Rush, T. J. Carmody et al., "Do bupropion SR and sertraline differ in their effects on anxiety in depressed patients?" *Journal of Clinical Psychiatry*, vol. 62, no. 10, pp. 776–781, 2001.
- [18] A. J. Rush, M. H. Trivedi, T. J. Carmody et al., "Response in relation to baseline anxiety levels in major depressive disorder treated with bupropion sustained release or sertraline," *Neuropsychopharmacology*, vol. 25, no. 1, pp. 131–138, 2001.
- [19] M. Hattesoehl, B. Feistel, H. Sievers, R. Lehnfeld, M. Hegger, and H. Winterhoff, "Extracts of Valeriana officinalis L. s.l. show anxiolytic and antidepressant effects but neither sedative nor myorelaxant properties," *Phytomedicine*, vol. 15, no. 1-2, pp. 2–15, 2008.
- [20] D. Braidá, V. Capurro, A. Zani et al., "Potential anxiolytic- and antidepressant-like effects of salvinin A, the main active ingredient of Salvia divinorum, in rodents," *British Journal of Pharmacology*, vol. 157, no. 5, pp. 844–853, 2009.
- [21] L. Steru, R. Chermat, B. Thierry, and P. Simon, "The tail suspension test: a new method for screening antidepressants in mice," *Psychopharmacology*, vol. 85, no. 3, pp. 367–370, 1985.
- [22] R. D. Porsolt, A. Bertin, and M. Jalfre, "Behavioral despair in mice: a primary screening test for antidepressants," *Archives Internationales de Pharmacodynamie et de Therapie*, vol. 229, no. 2, pp. 327–336, 1977.
- [23] A. Holt, D. F. Sharman, G. B. Baker, and M. M. Palcic, "A continuous spectrophotometric assay for monoamine oxidase and related enzymes in tissue homogenates," *Analytical Biochemistry*, vol. 244, no. 2, pp. 384–392, 1997.
- [24] B. Zhou, X. Li, Z. Qiu, and G. Liu, "Effect of leaves of Apocynum venetum L. on the activity of MAO in mice," *Journal of Medicinal Plant Research*, vol. 5, no. 12, pp. 2584–2586, 2011.
- [25] M. M. Bradford, "A rapid and sensitive method for the quantitation of microgram quantities of protein utilizing the principle of protein dye binding," *Analytical Biochemistry*, vol. 72, no. 1-2, pp. 248–254, 1976.
- [26] G. B. Drummond and B. D. M. Tom, "How can we tell if frogs jump further?" *British Journal of Pharmacology*, vol. 164, pp. 209–212, 2011.
- [27] G. B. Drummond and B. D. M. Tom, "Statistics, probability, significance, likelihood: words mean what we define them to mean," *British Journal of Pharmacology*, vol. 164, pp. 1573–1576, 2011.
- [28] J. A. M. Paula, M. R. R. Silva, M. P. Costa et al., "Phytochemical analysis and antimicrobial, antinociceptive, and anti-inflammatory activities of two chemotypes of Pimenta pseudocaryophyllus (Myrtaceae)," *Evidence-Based Complementary and Alternative Medicine*, vol. 2012, Article ID 420715, 15 pages, 2012.
- [29] T. J. Connor, J. P. Kelly, and B. E. Leonard, "Forced swim test-induced endocrine and immune changes in the rat: Effect of subacute desipramine treatment," *Pharmacology Biochemistry and Behavior*, vol. 59, no. 1, pp. 171–177, 1998.
- [30] J. F. Cryan, A. Markou, and I. Lucki, "Assessing antidepressant activity in rodents: recent developments and future needs," *Trends in Pharmacological Sciences*, vol. 23, no. 5, pp. 238–245, 2002.
- [31] A. Frazer and S. Benmansour, "Delayed pharmacological effects of antidepressants," *Molecular Psychiatry*, vol. 7, pp. S23–S28, 2002.
- [32] J. C. Nelson, C. M. Mazure, P. I. Jatlow, M. B. Bowers Jr., and L. H. Price, "Combining norepinephrine and serotonin reuptake

- inhibition mechanisms for treatment of depression: a double-blind, randomized study," *Biological Psychiatry*, vol. 55, no. 3, pp. 296–300, 2004.
- [33] M. L. Wong and J. Licinio, "Research and treatment approaches to depression," *Nature Reviews Neuroscience*, vol. 2, pp. 343–351, 2001.
- [34] M. Geyer and A. Markou, "Secondary animal models of psychiatric disorders," in *Psychopharmacology: The Fourth Generation of Progress*, F. Bloom and D. Kupfer, Eds., pp. 787–798, Raven Press, New York, NY, USA, 1995.
- [35] A. P. West, "Neurobehavioral studies of forced swimming: the role of learning and memory in the forced swim test," *Progress in Neuro-Psychopharmacology and Biological Psychiatry*, vol. 14, pp. 863–877, 1990.
- [36] V. Castagné, P. Moser, S. Roux, and R. D. Porsolt, "Rodent models of depression: forced swim and tail suspension behavioral despair tests in rats and mice," *Current Protocols in Neuroscience*. In press.
- [37] M. J. Detke, J. Johnson, and I. Lucki, "Acute and chronic antidepressant drug treatment in the rat forced swimming test model of depression," *Experimental and Clinical Psychopharmacology*, vol. 5, no. 2, pp. 107–112, 1997.
- [38] S. R. Bodnoff, B. Suranyi-Cadotte, D. H. Aitken, R. Quirion, and M. J. Meaney, "The effects of chronic antidepressant treatment in an animal model of anxiety," *Psychopharmacology*, vol. 95, no. 3, pp. 298–302, 1988.
- [39] G. F. Aragão, L. M. V. Carneiro, A. P. F. Junior et al., "A possible mechanism for anxiolytic and antidepressant effects of alpha- and beta-amyrin from *Protium heptaphyllum* (Aubl.) March," *Pharmacology Biochemistry and Behavior*, vol. 85, no. 4, pp. 827–834, 2006.
- [40] Y. Zhou, Y. H. Shen, C. Zhang, J. Su, R. H. Liu, and W. D. Zhang, "Triterpene saponins from *Bacopa monnieri* and their antidepressant effects in two mice models," *Journal of Natural Products*, vol. 70, no. 4, pp. 652–655, 2007.
- [41] J. L. Maia, R. C. P. Lima-Júnior, J. P. David, J. M. David, F. A. Santos, and V. S. Rao, "Oleanolic acid, a pentacyclic triterpene attenuates the mustard oil-induced colonic nociception in mice," *Biological and Pharmaceutical Bulletin*, vol. 29, no. 1, pp. 82–85, 2006.
- [42] D. S. Charney, "Monoamine dysfunction and the pathophysiology and treatment of depression," *Journal of Clinical Psychiatry*, vol. 59, pp. 11–14, 1998.
- [43] H. L. Miller, P. L. Delgado, R. M. Salomon et al., "Clinical and biochemical effects of catecholamine depletion on antidepressant-induced remission of depression," *Archives of General Psychiatry*, vol. 53, no. 2, pp. 117–128, 1996.
- [44] Z. Zhao, M. A. Baros, H. Zhang et al., "Norepinephrine transporter regulation mediates the long-term behavioral effects of the antidepressant desipramine," *Neuropsychopharmacology*, vol. 33, pp. 3190–3200, 2008.
- [45] P. M. Whitaker-Azmitia, A. Borella, and N. Raio, "Serotonin depletion in the adult rat causes loss of the dendritic marker MAP-2. A new animal model of schizophrenia," *Neuropsychopharmacology*, vol. 12, no. 3, pp. 269–272, 1995.
- [46] H. L. Miller, P. L. Delgado, R. M. Salomon, G. R. Heninger, and D. S. Charney, "Effects of alpha-methyl-para-tyrosine (AMPT) in drug free depressed patients," *Neuropsychopharmacology*, vol. 14, pp. 151–157, 1996.
- [47] R. W. Lam, E. M. Tam, A. Grewal, and L. N. Yatham, "Effects of alpha-methyl-para-tyrosine-induced catecholamine depletion in patients with seasonal affective disorder in summer remission," *Neuropsychopharmacology*, vol. 25, no. 5, pp. S97–S101, 2001.
- [48] R. M. Salomon, H. L. Miller, P. L. Delgado, and D. Charney, "The use of tryptophan depletion to evaluate central serotonin function in depression and other neuropsychiatric disorders," *International Clinical Psychopharmacology*, supplement 2, pp. 41–46, 1993.
- [49] M. J. Millan, "Multi-target strategies for the improved treatment of depressive states: conceptual foundations and neuronal substrates, drug discovery and therapeutic application," *Pharmacology & Therapeutics*, vol. 110, pp. 135–370, 2006.
- [50] J. Knoll, "The history of (-)deprenyl the first selective inhibitor of type B monoamine oxidase," *Voprosy Meditsinskoj Khimii*, vol. 43, no. 6, pp. 490–493, 1997.
- [51] J. Wouters, "Structural aspect of monoamine oxidase and its reversible inhibition," *Current Medicinal Chemistry*, vol. 5, pp. 137–162, 1988.
- [52] V. Butterweck, "Mechanism of action of St John's wort in depression: what is known?" *CNS Drugs*, vol. 17, no. 8, pp. 539–562, 2003.
- [53] D. L. Murphy, F. Karoum, D. Pickar et al., "Differential trace amine alterations in individuals receiving acetylenic inhibitors of MAO-A (clorgyline) or MAO-B (selegiline and pargyline)," *Journal of Neural Transmission*, supplement 52, pp. 39–48, 1998.
- [54] A. D. Williams, "Antidepressants," in *Principles of Medicinal Chemistry*, pp. 590–591, Lippincott Williams & Wilkins, Hagerstown, Md, USA, 2007.