



Published in final edited form as:

Nat Commun. ; 2: 192. doi:10.1038/ncomms1194.

Rad23 escapes degradation because it lacks a proteasome initiation region

Susan Fishbain¹, Sumit Prakash¹, Annie Herrig¹, Suzanne Elsassner², and Andreas Matouschek¹

¹Department of Molecular Biosciences, and Robert H. Lurie Comprehensive Cancer Center, Northwestern University, Evanston, IL 60208, USA

²Department of Cell Biology, Harvard Medical School, Boston, MA 02115, USA

Abstract

Rad23 is an adaptor protein that binds to both ubiquitinated substrates and to the proteasome. Despite its association with the proteasome, Rad23 escapes degradation. Here we show that Rad23 remains stable because it lacks an effective initiation region where the proteasome can engage the protein and unfold it. Rad23 contains several internal, unstructured loops but these are too short to act as initiation regions. Experiments with model proteins show that internal loops must be surprisingly long to engage the proteasome and support degradation. These length requirements are not specific to Rad23 and reflect a general property of the proteasome.

Introduction

Rad23 functions in both DNA repair and the ubiquitin proteasome system (UPS)^{1,2}. After DNA is damaged by radiation, a complex of Rad23 and Rad4 binds to the DNA region containing the lesion and, together with a second complex, causes the excision of the damaged nucleotides¹. In the UPS, Rad23 binds both the proteasome and ubiquitinated proteins and is thought to function as an adaptor protein that delivers substrates to the proteasome for degradation¹⁻⁶. Indeed, deletion of Rad23 together with the proteasome subunit Rpn10 leads to an accumulation of ubiquitinated proteins and overexpression of Rad23 inhibits degradation of proteins⁵⁻¹².

Rad23 in yeast is a 42kD protein and includes four domains: an N-terminal ubiquitin-like (UbL) domain, two ubiquitin-associated (UBA) domains, and a Rad4-binding domain (RBD)¹ (see schematic drawing in Fig. 1a). These four domains have well-defined structures but are connected by flexible linker regions ranging in length from 45 to 82 amino acids¹³.

Users may view, print, copy, and download text and data-mine the content in such documents, for the purposes of academic research, subject always to the full Conditions of use:http://www.nature.com/authors/editorial_policies/license.html#terms

Correspondence should be addressed to: matouschek@northwestern.edu.

Author contributions

S.F., S.P., A.H., S. E. and A.M. have designed and interpreted the experiments and wrote the manuscript. S.F., S.P., A.H. and S.E. performed the experiments.

competing financial interests

The authors have no competing financial interests.

The RBD links Rad23 to nucleotide excision repair¹⁴. The UbL domain allows Rad23 to bind to the proteasome^{3,14}, where it is recognized by the Rpn1^{15,16}, Rpn13¹⁷ subunits, and human but not yeast Rpn10¹⁸. The UBA domains bind to ubiquitin, ubiquitin-like domains or ubiquitinated proteins^{10,19-22}. Rad23's binding to both the proteasome and ubiquitinated proteins allows it to function as an adaptor protein that delivers substrates to the proteasome for degradation^{2,4-6}. Rad23 belongs to a larger group of targeting adaptors, which includes the proteins Dsk2 and Ddi1 in yeast and a larger number of proteins in mammalian cells^{2,19,21,23,24}. These adaptors are defined by the presence of a UbL domain and at least one UBA domain and are thought to be able to shuttle proteins for degradation and function as proteasome substrate adaptors^{2,24}.

Surprisingly, Rad23 itself is not degraded despite its association with the proteasome^{3,14}. Previous work has suggested that the second UBA domain of Rad23 (UBA2) is responsible for this stability²⁵. The UBA2 domain can bind to Rad23's own UbL domain^{25,26}, which in turn could limit Rad23's ability to bind the proteasome^{26,27}. The interaction of UbL and UBA domains in Rad23 may also lead to the formation of dimers or even larger structures, which could affect the degradation of Rad23^{20,22,28}.

Here we propose a different and more general explanation for the stability of Rad23 and UbL-UBA adaptors. The degradation signal or degron in most proteasome substrates has two components: a proteasome binding tag, typically a poly-ubiquitin chain, and an initiation region where the proteasome engages its substrate and begins to degrade²⁹⁻³¹. We propose that Rad23 remains stable because it has only one of the two required components of the degron: it contains the proteasome binding tag, the UbL domain in this case, but lacks an effective initiation region. As a result, the proteasome is unable to engage the bound Rad23 effectively, and the protein remains stable despite the fact that it can bind to the proteasome. Rad23 can be rendered a substrate for the proteasome by introducing initiation regions into the protein, either by placing an unstructured tail at the end of Rad23, or by lengthening its internal flexible linkers. Experiments with both Rad23 and simplified model proteins show that internal regions flanked by folded domains must be much longer to support proteasome initiation than the unstructured tails at the ends of proteins. The requirement for longer internal initiation regions is consistent with a proteasomal receptor for the initiation region that is buried and accessible through a channel.

Results

Rad23 is stable because it lacks an initiation site

Rad23 is not degraded by the proteasome³ (Fig. 1a and Supplementary Fig. S1) and earlier work suggests that the stability of Rad23 requires its C-terminal UBA domain (*i.e.*, the UBA2 domain)²⁵. To test this hypothesis, we replaced both UBA domains in Rad23 individually and in combination with the unrelated small protein dihydrofolate reductase (DHFR) and tested whether the hybrid protein is degraded by purified 26S yeast proteasome. Rad23 and the various Rad23 - DHFR hybrid proteins remained stable in these assays, including constructs in which the UBA2 domain was replaced with DHFR (Fig. 1b).

The degradation signal or degron in most proteasome substrates has two components: a proteasome binding tag and an initiation region. Given that Rad23 is targeted to the proteasome through its UbL domain^{3,14-16,18} we asked whether Rad23 lacked an initiation region. To address this question, we constructed Rad23 hybrids in which unstructured tails were attached to the C terminus of Rad23. The tails were derived either from the first 95 amino acids of the *S. cerevisiae* cytochrome *b*₂ protein or 34 amino acids from an internal region of the *E. coli* lac repressor (residues 321-354 of lacI)³², connected to Rad23 by a short linker. Both fusion proteins were degraded efficiently (Fig. 1c and Supplementary Fig. S1).

Deleting the UBA2 domain from Rad23 also creates an unstructured tail at the C terminus of the protein formed largely by linker residues that follow the RBD domain. This mutant Rad23 was also degraded, presumably because the newly exposed C terminal tail could serve as an initiation region (Fig. 1c). Finally, addition of C-terminal tails also led to the degradation of the Rad23 - DHFR hybrids discussed in the preceding paragraph (Fig. 1b).

Three observations suggest that the Rad23 hybrids containing unstructured tails were degraded by the proteasome: degradation depended on the proteasome binding UbL domain in the substrate (Fig. 1d and Supplementary Fig. S1); degradation depended on the presence of ATP in the reaction mixture (Fig. 1d); and the proteasome inhibitor MG132 strongly inhibited degradation (Fig. 1d).

Internal initiation sites in Rad23 are not very efficient

The unstructured linker regions of Rad23 range in length from 45 to 82 amino acids. Sequences of similar lengths, 39 and 95 amino acids, derived from yeast cytochrome *b*₂ functioned as initiation sites when placed at the C terminus of Rad23 (Fig. 1c). Therefore, we asked why the linkers connecting the Rad23 domains did not serve as initiation regions for the proteasome. One possible explanation is that the amino acid sequence of the linkers itself was somehow responsible for the lack of degradation. To test this possibility, we replaced the linker regions with sequences of identical length also derived from the cytochrome *b*₂. These hybrids were degraded faster than wildtype Rad23, but still only inefficiently (Fig. 2a). Thus, although the sequence identity of the linker region affected degradation, the length of the linker itself appears to impede the initiation of degradation.

To test this hypothesis, we inserted 95 amino acid long sequences that conferred instability to Rad23 when appended to the C terminus (Fig. 1c) into each of the three unstructured linker regions and followed the subsequent degradation by the proteasome (Fig. 2b). Surprisingly, these extended unstructured regions still did not function as efficient initiation sites (Fig. 2b). Only when we increased the length of the linkers even further by inserting a second 95 amino acid long sequence into each of the linker regions were the constructs degraded by the proteasome (Fig. 2c and Supplementary Fig. S1) with an efficiency approaching that of the C-terminal tails (Fig. 1c). These results suggested that the linker regions present in native Rad23 are not long enough to initiate degradation.

Internal initiation requires long unstructured regions

In Rad23, internal initiation regions needed to be considerably longer than initiation regions added as tails to function. Next we asked whether this requirement is specific to Rad23 or characteristic of the length requirements for internal and terminal initiation in general. To address this question, we constructed a series of model proteins consisting of the UbL domain from Rad23 attached to the N terminus of a DHFR domain. We then added sequences derived from *S. cerevisiae* cytochrome *b*₂ either at the C terminus of the DHFR domain (Fig. 3a) or internally between the UbL and DHFR domains (Fig. 3b; Supplementary Fig. S2).

The proteasome did not degrade substrates with 23 amino acid long tails, but degradation rates increased progressively and substantially as the tails were extended to 44, 64, and 102 amino acids (Fig. 3a,c), in accord with earlier studies^{30,33}. This effect was not a result of the specific amino acid sequences of the tails added, as scrambling the amino acid sequences of the tails or replacing the tails with unrelated sequences yielded equivalent results (Fig. 3c). When sequences were inserted between the folded UbL and DHFR domains, degradation rates increased only slowly as a function of length (Fig. 3b,c) compared to constructs with the same sequences appended at the C terminus (Fig. 3a,c). For example, a 60 amino acid tail at the end of a UbL-DHFR fusion allowed the protein to be degraded rapidly, but the same 60 amino acids inserted between the UbL and DHFR domains did not allow this protein to be degraded. An insert had to be at least 137 amino acids for slow degradation to occur and 157 amino acids or more for rapid degradation (Fig. 3b,c). The inserted linkers are unstructured because they are highly sensitive to added nonspecific proteases whereas the DHFR domain resisted proteolysis (Supplementary Fig. S3); inserting a linker of similar length but containing a folded domain did not allow degradation (Supplementary Fig. S4). In addition, the DHFR domain is stabilized by the ligand methotrexate, again suggesting that it is in its native conformation (Supplementary Fig. S3).

One explanation of these results could be that the longer initiation regions led to degradation because the longer inserts introduced amino acid sequences that contained a proteasome recognition motif. However, two observations suggest that the actual length of the inserts is responsible for degradation. First, the inserts longer than 95 amino acids in length were constructed as partial repeats of the first 95 amino acids (Supplementary Fig. S2), therefore the longer inserts do not contain new amino acid sequences. Second, repeating the experiments with linkers derived from a scrambled amino acid sequence (Fig. 3c) or an unrelated sequence derived from subunit 9 of the F_o ATPase (Supplementary Fig. S5) yielded similar results. Therefore we concluded that the behavior of Rad23 reflects a general mechanism namely that degradation from internal regions requires much longer initiation regions than degradation from tails at the end of proteins.

Targeting tags affect initiation region length requirements

UbL domains are found in proteins associated with the proteasome but most proteins appear to be targeted for proteasome degradation by ubiquitin modifications. To determine if the requirements for initiation regions were specific to the UbL domain, we tested whether proteasome substrates targeted by ubiquitin tags also required long internal initiation regions

for rapid degradation. To do so, we constructed proteins that contained the same DHFR domain and initiation regions as before but the UbL domain was replaced with four ubiquitin moieties fused in frame N to C termini^{34,35}. This linear ubiquitin tag is known to target proteins to the proteasome for degradation both *in vitro* and *in vivo*³⁴. The substrates with the ubiquitin tag no longer contained any components derived from Rad23 but also required long internal initiation regions to be degraded (Fig. 3d-f). These internal initiation regions again needed to be much longer than when they are added as tails (Fig. 3f). Interestingly, internal loops could be somewhat shorter with ubiquitin tags than with UbL tags and still serve as effective initiation regions (Fig. 3c,f). However, the main conclusion of this set of experiments is that the requirement for the much greater length of unstructured regions serving as internal initiation sites compared to terminal initiation sites reflects a general property of the proteasome; it is independent of the origin of the substrate protein or the proteasome-binding tag.

Initiation sites determine Rad23 stability *in vivo*

The experiments described above demonstrate that Rad23 stability can be controlled through the addition of a proteasome initiation site in a well-defined reconstituted *in vitro* proteasome degradation system. *In vivo*, the stability of Rad23 may be affected by additional factors such as non-stoichiometric proteasome subunits lost during purification, components of the ubiquitination machinery, or Rad23 binding partners. To test whether the stability of Rad23 *in vivo* was also due to the absence of an initiation site, we measured the accumulation of Rad23 hybrid proteins in yeast.

To follow the expression of Rad23 hybrids in the background of wildtype Rad23, we expressed constructs containing an N-terminal Flag tag in *S. cerevisiae* under the control of a strong constitutive promoter. The Flag tag did not destabilize Rad23 and tagged Rad23 accumulated in yeast. The host strain was deleted for the *PDR5* gene, which encodes a plasma membrane ATP-binding cassette (ABC) transporter. Deleting this transporter renders the yeast more sensitive to drugs, including proteasome inhibitors (*e.g.*, [36]).

The Rad23 hybrid proteins accumulated to different levels when expressed in yeast. Appending 39 or 95 amino acid long tails at the C terminus of Rad23 (to create Rad23-39 and Rad23-95) resulted in the disappearance of detectable levels of the hybrid protein (Fig. 4). The genes for these constructs were expressed at levels at least equal to those of the Rad23 gene lacking a tail, demonstrating that the observed decreases in protein levels were caused by post-transcriptional regulation (Supplementary Fig. S6). Indeed, Rad23-39 and Rad23-95 accumulated when the proteasome was inhibited with MG132 (Fig. 4). *In vitro*, the 95 amino acid tail led to more rapid degradation than shorter tails (Fig. 1c) and correspondingly less Rad23-95 than Rad23-39 accumulated *in vivo* (Fig. 4), presumably because MG132 does not inhibit all proteasome activity. Rad23 remains stable when its UBA domains are replaced with DHFR domains (Supplementary Fig. S7).

Internal initiation sites also functioned *in vivo*. Inserting a 190 amino acid loop into the L3 region of Rad23 significantly reduced the amount of the hybrid protein relative to that of the wildtype Rad23 (Fig. 4). Proteasome degradation apparently caused the destabilization, as protein levels were restored its inhibitor MG132 (Fig. 4). Degradation *in vivo* appears to

follow the same length requirements as degradation *in vitro*; inserting a 95 amino acid loop into the L2 region of Rad23 had little effect on protein levels relative to wildtype Rad23 (Fig. 4), just as observed *in vitro* (Fig. 2b).

In summary, the stability of hybrid Rad23 proteins *in vivo* behaved as predicted from the *in vitro* proteasome degradation assays. Thus, it appears that also *in vivo* Rad23 escapes proteasome degradation because it lacks effective initiation regions. Initiation is governed by the same length requirements for initiation *in vivo* as *in vitro*.

Discussion

Rad23 binds the proteasome and ubiquitinated proteins, which are subsequently degraded, but Rad23 itself escapes to shuttle the next round of substrates for degradation. The fact that Rad23 escapes proteolysis makes it a more effective and efficient proteasome adaptor. Understanding the molecular mechanism by which Rad23 avoids proteolysis should provide clues regarding the selection of substrates by the proteasome. Here we propose that Rad23 lacks a critical part of the degron, the proteasome initiation region. This hypothesis is supported by the observation that introducing unstructured linkers into various regions of Rad23 to serve as artificial initiation regions led to Rad23's rapid proteolysis both *in vitro* (Figs. 1, 2) and *in vivo* (Fig. 4).

Previous studies that investigated the stability of Rad23 strongly implicated a specific function of the C-terminal UBA2 domain of Rad23 in its stabilization²⁵. However, the experimental findings on which this conclusion was based may also fit the simpler model described here. Destabilizing the UBA2 domain with a single amino acid substitution or deleting it entirely leads to the rapid degradation of Rad23²⁵. The proteins Ddi1 and Dsk2²⁵ (see below) as well as human protein ataxin-1 interacting ubiquitin-like protein (A1UP)³⁷ also contain N-terminal UbL domains and C-terminal UBA domains. Just like Rad23, these proteins accumulate in the cytosol but become rapidly degraded when their UBA domain is mutated^{25,37}. However, at least for Rad23, it appears to be simply the compact structure of the UBA2 domain that is important for Rad23 stability and replacing the UBA2 domain with a DHFR domain did not destabilize Rad23 (Fig. 1b). The amino acid sequences of the UBA2 domain and DHFR are not related to each other and therefore the proteins are not expected to interact with the same partners. The mutations in the UBA2 domain destabilized the structure and it is possible that they did so sufficiently so that it unfolded and served as an unstructured initiation region. Similarly, deleting the UBA2 domain leaves a 45 amino acid tail at the C terminus of Rad23 that in turn can serve as the proteasome initiation region (Fig. 1c). This mechanism is also consistent with the finding that deleting the last ten amino acids of the UBA2 domain leads to Rad23's rapid degradation³. Protein folding is highly cooperative so that deleting even a small number of amino acids from a folded domain leads to its unfolding (*e.g.*, [38]). Finally, it has been observed that attaching an epitope tag to the C terminus of Rad23 can lead to its rapid degradation by the proteasome *in vivo*³, presumably because the tag provides a proteasome initiation site.

The structured domains in Rad23 are connected by relatively long loops that are flexible in the human Rad23 homologue HR23a¹³. The proteasome does not initiate degradation at

these loops, despite the fact that extensions of similar lengths attached to the end of Rad23 lead to its rapid degradation (Figs. 1c, 4). Indeed, experiments with model proteins suggest that internal loops flanked by folded domains must be surprisingly long and in the range of 150 amino acids or more to support rapid degradation (Fig. 3). Interestingly, it appears that the upper lengths of linkers found in Rad23 homologues are always below this 150 amino acid cut off (Fig. 5). A comparison of the amino acid sequences of 15 Rad23 proteins from a broad range of eukaryotes (Fig. 5 and supplementary information) suggests that the sequences of the folded domains in these homologues (*i.e.*, the UbL, UBA, RBD domains) are well conserved but that the sequences of the linkers connecting the domains are much less so (Fig. 5b). The linker lengths vary considerably ranging from 13 to 114 amino acids, but the lengths of the linkers always stays below the length that would be required for proteasomal degradation (Fig. 5c).

The proposed mechanism explaining the stability of Rad23 could apply to the behavior of other cellular proteins. For example, Rad23 is a member of a larger group referred to as UbL/UBA proteins because they all contain at least one domain of this kind. Other members of this group in yeast, Ddi1 and Dsk2, are structurally and functionally similar to Rad23 and, as mentioned above, they each contain an N-terminal UbL domain but only one C-terminal UBA domain^{2,24}. Both proteins bind to the proteasome via their UbL domains and to ubiquitinated proteins through their C-terminal UBA domain. Thus, like Rad23, Ddi1 and Dsk2 function as ubiquitin receptors and facilitate transport of ubiquitinated proteins to the proteasome for degradation^{2,19,21,23,24}. Ddi1, for example, is responsible for the proteasomal degradation of Ho endonuclease, hence the deletion of Ddi1 results in the stabilization of Ho protein *in vivo*³⁹. Dsk2 plays a role in the UFD proteolytic pathway^{21,40} and in the proteasomal degradation of N-end rule model substrates by binding to K48-linked polyubiquitin chains²³. Interestingly, similar to Rad23, there is no evidence of proteasomal degradation of either Ddi1 or Dsk2, regardless of their association with the proteasome^{3,14,25}. Comparing the sequences of 24 Ddi1 and Dsk2 homologues from a range of eukaryotic species shows again that the folded domains in these proteins are more conserved than the loops (Fig. 5b). The lengths of the loops vary as they did for Rad23 but the upper limit again coincides with the cutoff for internal proteasome initiation sites and the requirement of these proteins to avoid degradation (Fig. 5b).

The loops connecting domains in Rad23 have unusual amino acid compositions, and large fractions of these loops have been annotated as low complexity regions in the PFAM database⁴¹, meaning that one or a few amino acids are overrepresented. In principle, this amino acid composition could also affect how well the loops serve as proteasome initiation sites. Indeed, we found that stretches of a strongly biased amino acid composition adjacent to a folded domain can block proteasome progression and may allow some substrates to escape from the proteasome before they are fully degraded^{42,43}. The amino acid composition of the Rad23 loops is not responsible for the stability of the protein because replacing the loops with peptides of different and unbiased sequences does not substantially destabilize Rad23. However, this finding does not rule out that amino acid composition has an effect on the ability of peptides to serve as initiation sites. Indeed, the Rad23 loops do not function well as initiation sites when tested in model proteasome substrates (Supplementary

Fig. S8), and any effects of amino acid composition on proteasome initiation will need to be investigated in the future.

The long length requirement for internal proteasome initiation sites probably has a structural explanation. If, as seems likely (see below), the receptor for initiation regions is located in a channel in the proteasome, folded domains would block access to the binding site. Depending on how deeply the receptor is buried, long flexible linkers would be required to reach the binding site. In the simplest case, twice the length of linkers is required when folded domains block both ends of the initiation region than when one end is open (Fig. 6). However, other geometries are also possible and could lead to similar results. The location of the initiation site receptor on the proteasome is unknown, but the bacterial degradation system provides some clues. In bacteria, the functions of the proteasome are performed by AAA+ proteases, which share their architecture with the proteasome and appear to work by the same overall mechanism^{44,45}. Proteins are targeted to AAA+ proteases by linear peptide sequences that perform the same function as the degradation initiation sites in proteasome substrates (*e.g.*, [46-48]). The AAA+ proteases recognize these targeting signals with loops that are lining the degradation channel⁴⁹⁻⁵². Because of the similarities between the proteasome and the AAA+ proteases, the proteasome may recognize initiation sites in the same way. The proteasome degradation channel is narrow but it can accommodate two polypeptide chains simultaneously⁵³ and therefore should allow the insertion of a polypeptide loop during the initiation of degradation.

Substrates that were targeted to the proteasome by a ubiquitin tag instead of a UbL tag appeared to need somewhat shorter internal initiation regions for effective degradation. In the model proposed above, the simplest explanation for this observation would be that the UbL receptor on the proteasome is located further from the initiation region receptor than the ubiquitin receptors, as has been suggested recently from protein degradation experiments⁵⁴.

An alternative explanation for the inefficient initiation from internal sites could be that the proteasome is simply not able to unfold two domains at the same time. The proteasome unravels structured domains in a substrate sequentially after it begins degradation at one of the ends of the polypeptide chain⁴⁴ and it can do so very effectively⁵⁵. When the proteasome initiates between two domains it may be forced to unfold them both at the same time and fail at this task⁵⁶. However, the observation that simply lengthening internal initiation regions allows degradation to occur suggests that the proteasome is able to cope with two domain substrates, either by unraveling these domains sequentially or simultaneously. Where the proteasome fails to degrade one or both domains the most likely outcome is clipping of the substrate rather than failure to initiation⁵⁶.

In summary, we propose that Rad23 escapes proteasome degradation because it lacks a critical part of the degron, namely an initiation region. Unstructured regions in proteins often initiate degradation, but the unstructured regions in Rad23 are flanked by folded domains and probably cannot reach the initiation receptor of the proteasome. Degradation from an internal site requires long unstructured initiation regions. Creating initiation sites in Rad23 by lengthening its internal linkers leads to the protein's rapid proteasomal degradation. We

propose that the requirement for long internal initiation regions for proteasome degradation also explains the stability of other proteins in the cell, such as the UbL/UBA family of adaptor proteins.

Methods

Substrate proteins

Protein substrates were derived from *S. cerevisiae* Rad23 and *E. coli* DHFR; the unstructured regions were derived from either residues 1-95 of *S. cerevisiae* cytochrome *b*₂ or from residues 321-354 of the *E. coli* lac repressor³². Lysines in these sequences were replaced by arginines unless noted otherwise. For *in vitro* experiments, constructs were cloned into the plasmid pGEM-3Zf (+) (Promega), where they were under the control of the T7 promoter; for *in vivo* experiments, constructs were cloned into the yeast CEN vector p416 where they were under the control of a strong constitutive promoter (the glyceraldehyde-3-phosphate dehydrogenase (GPD)⁵⁷. One set of model protein constructs contained the UbL domain and the following 22 residues of *S. cerevisiae* Rad23 (*i.e.*, amino acid 1 to 99 of Rad23) as well as *E. coli* DHFR. Unstructured regions consisting of different combinations of residues 1-95 of cytochrome *b*₂ were inserted between UbL and DHFR with short linkers. Specifically, the construct UbL-60-DHFR consisted of amino acids 1-55 of cytochrome *b*₂, the construct UbL-102-DHFR consisted of amino acids 1-95, UbL-137-DHFR consisted of amino acids 1-95 followed by amino acids 1-35, UbL-157-DHFR consisted of amino acids 1-95 followed by amino acids 1-55, and UbL-193-DHFR consisted of two repeats of amino acids 1-57 of cytochrome *b*₂ followed by amino acids 1-55 of cytochrome *b*₂. In the constructs with the unstructured regions on the C terminus of DHFR, different parts of the cytochrome *b*₂ sequence were followed by a hexahistidine tag. Specifically, the constructs UbL-DHFR-23, UbL-DHFR-44, and UbL-DHFR-64 consisted of the first 8, 28, and 48 amino acids, respectively, each followed by amino acids 90-95. UbL-DHFR-102 consisted of amino acids 1-95.

The scrambled initiation regions were derived from the first 51 amino acids of *S. cerevisiae* cytochrome *b*₂ and the sequence QRTLSRSFYSTATGAASRSGR (derived from cytochrome *c*₁). This sequence was then scrambled using a scrambling algorithm (http://my-i-p.com/Word_Scramble_Generator.html). The resulting sequence was optimized for *E. coli* codon usage and to remove common restriction sites with the web-based sequence tool DNABWorks (<http://mc11.ncifcrf.gov/dnaworks>) and the gene was constructed by PCR assembly.

In the ubiquitin-tag constructs, the coding region for the UbL domain, and the following 22 residues of *S. cerevisiae* Rad23 were replaced with four copies of the coding region for ubiquitin, each of which contains the mutation Gly 76 to Val, connecting each domain with the linker GSGGGG as described previously³⁴.

In the Rad23 constructs, sequences either replaced Rad23's linker regions, were inserted into the linker regions, or were attached to the C terminus of Rad23. The insertions in one set of Rad23 constructs consisted of amino acids 1-95 of cytochrome *b*₂ inserted after amino acid 111 of Rad23 to yield Rad23-95→L1, after amino acid 219 of Rad23 to yield

Rad23-95→L2, and after amino acid 325 of Rad23 to yield Rad23-95→L3 constructs. In a second set of constructs, two repeats of amino acids 1-95 of cytochrome *b*₂ were inserted at the same positions to yield Rad23-190→L1, Rad23-190→L2, or Rad23-190→L3. Constructs with replacement sequences in the linker regions of Rad23, Rad23→ L1, Rad23→ L2, and Rad23→ L3, consisted of amino acids 1-71, 1-83, and 1-44, respectively, of cytochrome *b*₂. The C-terminal tail construct Rad23-95 contained amino acids 1-95 of cytochrome *b*₂ attached to the C terminus of Rad23 and Rad23-39 contained amino acids 321 – 354 of the lac repressor attached to the C terminus of Rad23. All genes were constructed using standard molecular biology techniques and verified by DNA sequencing.

Protein expression and purification

Yeast proteasome was purified from *S. cerevisiae* strain YYS40 (MATa rpn11: :RPN113xFLAG-HIS3 leu2 his3 ura3 trp1 ade2 can1 ssd1). In this strain the genomic copy of RPN11 is replaced with an RPN11 gene containing the coding sequence for three FLAG tags at its 3' end⁵⁸. The 26S proteasome was purified using immunoaffinity chromatography using FLAG antibodies (M2-agarose affinity beads; Sigma) following the published protocol⁵⁸ with minor modifications.

For *in vitro* degradation experiments, UbL tagged radioactive substrates were expressed from a T7 promoter by *in vitro* transcription and translation using a TNT Coupled Reticulocyte Lysate System (Promega Corp.) containing [³⁵S] methionine. Ubiquitin tagged radioactive substrates were expressed from a T7 promoter by *in vitro* transcription and translation using an *E. coli* T7 S30 Extract System for Circular DNA (Promega Corp.) containing [³⁵S] methionine. After synthesis, the substrates were partially purified by high-speed centrifugation followed by precipitation in 2 volumes of saturated ammonium sulfate. Substrates were incubated on ice for a minimum of 1 hour, pelleted, and resuspended in degradation buffer (5% [v/v] glycerol, 5 mM MgCl₂, 50 mM Tris/Cl [pH 7.4]).

Proteasome degradation assays

Degradation assays were performed with 50 nM purified yeast proteasome, at 30°C in 5% [v/v] glycerol, 5 mM MgCl₂, 50 mM Tris/Cl [pH 7.4], 1 mM DTT and in the presence of an ATP-regeneration system (1 mM ATP, 10 mM creatine phosphate, 0.1mg/ml creatine phosphokinase). *In vitro*-translated [³⁵S]-methionine labeled proteins were added to purified proteasomes in reaction buffers to start degradation. Samples were withdrawn at the indicated times, added to SDS-PAGE sample buffers to stop the reactions, and analyzed by SDS-PAGE. The amounts of radioactive proteins were determined by electronic autoradiography (Instant Imager; Packard). Degradation experiments were each conducted at least three times and protein amounts plotted against degradation times. These data were fitted to equations describing single exponential decays, and initial degradation rates were calculated from the fit amplitudes and first-order rate constants. When the changes in protein amounts over the total reaction times were small, data were fit to straight lines as approximations of the initial phases of exponential decays and the slopes of lines taken as initial degradation rates. Curve fittings were performed with the graphing software package

Kaleidagraph (version 4.0, Synergy Software). The error bars for initial degradation rates are standard errors obtained from at least three independent measurements.

In vivo protein levels

Rad23 fusion proteins were expressed from a transgene under the control of a strong constitutive promoter expressing glyceraldehyde-3-phosphate dehydrogenase (GPD) on a CEN plasmid (p416 GPD), with a URA3 marker gene⁵⁷. These Flag-tagged hybridgenes were used to transform *S. cerevisiae* strain BY4741 (*Mat a; his3D1; leu2D0; met15D0; ura3D0; PDR5: kanMX4*) using standard protocols. Transformants were cultured overnight in an SC - Ura liquid medium at 30 °C, diluted to an OD_{600nm} of 0.2, grown to a mid-log phase in the presence or absence of 200 μM MG132, and then collected by centrifugation. Cell pellets were suspended in a HEPES lysis buffer (8M urea, 50mM HEPES (pH7.4), 2.5% SDS) and lysed using glass beads (BioSpec Products) and vortexing. Proteins were separated by SDS-PAGE, transferred to a nitrocellulose membrane (Pall Corporation), and detected with a monoclonal anti-Flag antibody (Sigma) and an Alexa-800 labeled goat anti-mouse secondary antibody (Rockland Immunochemicals). Protein levels were quantified using an Odyssey infrared imaging system (Li-COR Biosciences) and normalized using PGK (phosphoglycerate kinase) levels detected by an anti-PGK monoclonal antibody (Invitrogen) and an Alexa-800 goat anti-mouse secondary antibody (Rockland Immunochemicals).

Transcription levels

To measure the relative levels of mRNA expression for each Rad23 construct, we extracted RNA from yeast cultures containing the different Rad23 hybridgenes using the RNeasy Mini Kit (Qiagen). Approximately 2 μg of total RNA was reverse transcribed using 6.3 μM oligo dT and reverse transcriptase at 42 °C for 1hr. 50-100 ng of total product was used as the template for the quantitative PCR reactions using sets of primers specific to Flag-tagged Rad23 to distinguish transgene transcripts from those resulting from endogenous Rad23 expression. A primer set specific to actin was used as an internal control. The sequences of the primers used were the following: ACT1CDSF, GGTTATTGATAACGGTTCTGGTATG; ACT1CDSR, ATGATACCTTGGTGTCTTGGTCTAC; Flag-Rad23F, GGGCGATTATAAAGATGATGACG; FLAG-RAD23R, TGTGTTTGAAGTTCCAGATC. Serial dilutions of total yeast DNA and linear regression analysis of cycle threshold (Ct) values were used to establish standard curves of each primer set. Relative expression levels of each Rad23 transgene were determined using the standard curves for each primer set and normalized by dividing each sample value by actin expression levels. All reactions were done in triplicate.

Supplementary Material

Refer to Web version on PubMed Central for supplementary material.

Acknowledgments

We thank members of the Matouschek lab for helpful discussions and advice and Sara Ahmed, Jason Brickner, Jaclyn Jansen, Eric Weiss, Mike French, Mirosława Protic, Linda Hicke and Richard Gaber for help and advice with the yeast experiments. We also thank Daniel Czyn for preliminary experiments with Rad23. We are also grateful to Ginger Leigh for carefully editing of the manuscript. The work was supported by grant R01 GM063004 from the National Institutes of Health and by grant U54CA143869 from the National Cancer Institute as well as the Robert H. Lurie Comprehensive Cancer Center at Northwestern University.

References

1. Dantuma NP, Heinen C, Hoogstraten D. The ubiquitin receptor Rad23: at the crossroads of nucleotide excision repair and proteasomal degradation. *DNA Repair (Amst)*. 2009; 8:449–460. [PubMed: 19223247]
2. Finley D. Recognition and processing of ubiquitin-protein conjugates by the proteasome. *Annu Rev Biochem*. 2009; 78:477–513. [PubMed: 19489727]
3. Schaubert C, et al. Rad23 links DNA repair to the ubiquitin/proteasome pathway. *Nature*. 1998; 391:715–718. [PubMed: 9490418]
4. Chen L, Madura K. Rad23 promotes the targeting of proteolytic substrates to the proteasome. *Mol Cell Biol*. 2002; 22:4902–13. [PubMed: 12052895]
5. Verma R, Oania R, Graumann J, Deshaies RJ. Multiubiquitin chain receptors define a layer of substrate selectivity in the ubiquitin-proteasome system. *Cell*. 2004; 118:99–110. [PubMed: 15242647]
6. Elsasser S, Chandler-Militello D, Müller B, Hanna J, Finley D. Rad23 and Rpn10 serve as alternative ubiquitin receptors for the proteasome. *J Biol Chem*. 2004; 279:26817–26822. [PubMed: 15117949]
7. Lambertson D, Chen L, Madura K. Pleiotropic defects caused by loss of the proteasome-interacting factors Rad23 and Rpn10 of *Saccharomyces cerevisiae*. *Genetics*. 1999; 153:69–79. [PubMed: 10471701]
8. Ortolan TG, et al. The DNA repair protein rad23 is a negative regulator of multi-ubiquitin chain assembly. *Nat Cell Biol*. 2000; 2:601–608. [PubMed: 10980700]
9. Raasi S, Pickart CM. Rad23 ubiquitin-associated domains (UBA) inhibit 26 S proteasome-catalyzed proteolysis by sequestering lysine 48-linked polyubiquitin chains. *J Biol Chem*. 2003; 278:8951–9. [PubMed: 12643283]
10. Chen L, Shinde U, Ortolan TG, Madura K. Ubiquitin-associated (UBA) domains in Rad23 bind ubiquitin and promote inhibition of multi-ubiquitin chain assembly. *EMBO Rep*. 2001; 2:933–938. [PubMed: 11571271]
11. Kim I, Mi K, Rao H. Multiple interactions of rad23 suggest a mechanism for ubiquitylated substrate delivery important in proteolysis. *Mol Biol Cell*. 2004; 15:3357–3365. [PubMed: 15121879]
12. Hwang G-W, Sasaki D, Naganuma A. Overexpression of Rad23 confers resistance to methylmercury in *saccharomyces cerevisiae* via inhibition of the degradation of ubiquitinated proteins. *Mol Pharmacol*. 2005; 68:1074–1078. [PubMed: 15998872]
13. Walters KJ, Lech PJ, Goh AM, Wang Q, Howley PM. DNA-repair protein hHR23a alters its protein structure upon binding proteasomal subunit S5a. *Proc Natl Acad Sci USA*. 2003; 100:12694–12699. [PubMed: 14557549]
14. Watkins JF, Sung P, Prakash L, Prakash S. The *Saccharomyces cerevisiae* DNA repair gene RAD23 encodes a nuclear protein containing a ubiquitin-like domain required for biological function. *Mol Cell Biol*. 1993; 13:7757–7765. [PubMed: 8246991]
15. Elsasser S, et al. Proteasome subunit Rpn1 binds ubiquitin-like protein domains. *Nat Cell Biol*. 2002; 4:725–730. [PubMed: 12198498]
16. Saeki Y, Sone T, Toh-e A, Yokosawa H. Identification of ubiquitin-like protein-binding subunits of the 26S proteasome. *Biochem Biophys Res Commun*. 2002; 296:813–819. [PubMed: 12200120]

17. Husnjak K, et al. Proteasome subunit Rpn13 is a novel ubiquitin receptor. *Nature*. 2008; 453:481–488. [PubMed: 18497817]
18. Hiyama H, et al. Interaction of hHR23 with S5a. The ubiquitin-like domain of hHR23 mediates interaction with S5a subunit of 26 S proteasome. *J Biol Chem*. 1999; 274:28019–28025. [PubMed: 10488153]
19. Wilkinson CR, et al. Proteins containing the UBA domain are able to bind to multi-ubiquitin chains. *Nat Cell Biol*. 2001; 3:939–943. [PubMed: 11584278]
20. Bertolaet BL, et al. UBA domains of DNA damage-inducible proteins interact with ubiquitin. *Nat Struct Biol*. 2001; 8:417–422. [PubMed: 11323716]
21. Rao H, Sastry A. Recognition of specific ubiquitin conjugates is important for the proteolytic functions of the ubiquitin-associated domain proteins Dsk2 and Rad23. *J Biol Chem*. 2002; 277:11691–11695. [PubMed: 11805121]
22. Kang Y, et al. UBL/UBA ubiquitin receptor proteins bind a common tetraubiquitin chain. *J Mol Biol*. 2006; 356:1027–1035. [PubMed: 16405905]
23. Funakoshi M, Sasaki T, Nishimoto T, Kobayashi H. Budding yeast Dsk2p is a polyubiquitin-binding protein that can interact with the proteasome. *Proc Natl Acad Sci USA*. 2002; 99:745–750. [PubMed: 11805328]
24. Elsasser S, Finley D. Delivery of ubiquitinated substrates to protein-unfolding machines. *Nat Cell Biol*. 2005; 7:742–749. [PubMed: 16056265]
25. Heessen S, Masucci MG, Dantuma NP. The UBA2 domain functions as an intrinsic stabilization signal that protects Rad23 from proteasomal degradation. *Mol Cell*. 2005; 18:225–235. [PubMed: 15837425]
26. Wang Q, Goh AM, Howley PM, Walters KJ. Ubiquitin recognition by the DNA repair protein hHR23a. *Biochemistry*. 2003; 42:13529–13535. [PubMed: 14621999]
27. Madura K. The ubiquitin-associated (UBA) domain: on the path from prudence to prurience. *Cell Cycle*. 2002; 1:235–244. [PubMed: 12429939]
28. Bertolaet BL, et al. UBA domains mediate protein-protein interactions between two DNA damage-inducible proteins. *J Mol Biol*. 2001; 313:955–963. [PubMed: 11700052]
29. Prakash S, Tian L, Ratliff KS, Lehotzky RE, Matouschek A. An unstructured initiation site is required for efficient proteasome-mediated degradation. *Nat Struct Mol Biol*. 2004; 11:830–837. [PubMed: 15311270]
30. Takeuchi J, Chen H, Coffino P. Proteasome substrate degradation requires association plus extended peptide. *EMBO J*. 2007; 26:123–131. [PubMed: 17170706]
31. Schrader EK, Harstad KG, Matouschek A. Targeting proteins for degradation. *Nat Chem Biol*. 2009; 5:815–822. [PubMed: 19841631]
32. Bachmair A, Varshavsky A. The degradation signal in a short-lived protein. *Cell*. 1989; 56:1019–1032. [PubMed: 2538246]
33. Verhoef L, et al. Minimal length requirement for proteasomal degradation of ubiquitin-dependent substrates. *FASEB J*. 2008; 23:123–133. [PubMed: 18796559]
34. Stack JH, Whitney M, Rodems SM, Pollok BA. A ubiquitin-based tagging system for controlled modulation of protein stability. *Nat Biotechnol*. 2000; 18:1298–1302. [PubMed: 11101811]
35. Thrower JS, Hoffman L, Rechsteiner M, Pickart CM. Recognition of the polyubiquitin proteolytic signal. *EMBO J*. 2000; 19:94–102. [PubMed: 10619848]
36. Ghaboosi N, Deshaies RJ. A conditional yeast E1 mutant blocks the ubiquitin-proteasome pathway and reveals a role for ubiquitin conjugates in targeting Rad23 to the proteasome. *Mol Biol Cell*. 2007; 18:1953–1963. [PubMed: 17360968]
37. Riley BE, Xu Y, Zoghbi HY, Orr HT. The effects of the polyglutamine repeat protein ataxin-1 on the UbL-UBA protein A1Up. *J Biol Chem*. 2004; 279:42290–42301. [PubMed: 15280365]
38. Neira JL, Fersht AR. Acquisition of native-like interactions in C-terminal fragments of barnase. *J Mol Biol*. 1999; 287:421–432. [PubMed: 10080903]
39. Kaplun L, et al. The DNA damage-inducible UbL-UbA protein Ddi1 participates in Mec1-mediated degradation of Ho endonuclease. *Mol Cell Biol*. 2005; 25:5355–5362. [PubMed: 15964793]

40. Liu C, van Dyk D, Li Y, Andrews B, Rao H. A genome-wide synthetic dosage lethality screen reveals multiple pathways that require the functioning of ubiquitin-binding proteins Rad23 and Dsk2. *BMC Biol.* 2009; 7:75. [PubMed: 19909498]
41. Finn RD, et al. The Pfam protein families database. *Nucleic Acids Res.* 2010; 38:D211–222. [PubMed: 19920124]
42. Tian L, Holmgren RA, Matouschek A. A conserved processing mechanism regulates the activity of transcription factors Cubitus interruptus and NF-kappaB. *Nat Struct Mol Biol.* 2005; 12:1045–1053. [PubMed: 16299518]
43. Hoyt MA, et al. Glycine-alanine repeats impair proper substrate unfolding by the proteasome. *EMBO J.* 2006; 25:1720–9. [PubMed: 16601692]
44. Lee C, Schwartz MP, Prakash S, Iwakura M, Matouschek A. ATP-dependent proteases degrade their substrates by processively unraveling them from the degradation signal. *Mol Cell.* 2001; 7:627–637. [PubMed: 11463387]
45. Sauer RT, et al. Sculpting the proteome with AAA(+) proteases and disassembly machines. *Cell.* 2004; 119:9–18. [PubMed: 15454077]
46. Keiler KC, Waller PR, Sauer RT. Role of a peptide tagging system in degradation of proteins synthesized from damaged messenger RNA. *Science.* 1996; 271:990–993. [PubMed: 8584937]
47. Flynn JM, Neher SB, Kim YI, Sauer RT, Baker TA. Proteomic discovery of cellular substrates of the ClpXP protease reveals five classes of ClpX-recognition signals. *Mol Cell.* 2003; 11:671–683. [PubMed: 12667450]
48. Gonzalez M, Frank EG, Levine AS, Woodgate R. Lon-mediated proteolysis of the Escherichia coli UmuD mutagenesis protein: in vitro degradation and identification of residues required for proteolysis. *Genes Dev.* 1998; 12:3889–3899. [PubMed: 9869642]
49. Ishikawa T, et al. Translocation pathway of protein substrates in ClpAP protease. *Proc Natl Acad Sci USA.* 2001; 98:4328–4233. [PubMed: 11287666]
50. Yamada-Inagawa T, Okuno T, Karata K, Yamanaka K, Ogura T. Conserved pore residues in the AAA protease FtsH are important for proteolysis and its coupling to ATP hydrolysis. *J Biol Chem.* 2003; 278:50182–50187. [PubMed: 14514680]
51. Hinnerwisch J, Fenton WA, Furtak KJ, Farr GW, Horwich AL. Loops in the central channel of ClpA chaperone mediate protein binding, unfolding, and translocation. *Cell.* 2005; 121:1029–1041. [PubMed: 15989953]
52. Farrell CM, Baker TA, Sauer RT. Altered specificity of a AAA+ protease. *Mol Cell.* 2007; 25:161–166. [PubMed: 17218279]
53. Lee C, Prakash S, Matouschek A. Concurrent translocation of multiple polypeptide chains through the proteasomal degradation channel. *J Biol Chem.* 2002; 277:34760–34765. [PubMed: 12080075]
54. Inobe T, Fishbain S, Prakash S, Matouschek A. Defining the geometry of the two-component proteasome degron. *Nat Chem Biol.* 2011 in press.
55. Koodathingal P, et al. ATP-dependent proteases differ substantially in their ability to unfold globular proteins. *J Biol Chem.* 2009; 284:18674–18684. [PubMed: 19383601]
56. Piwko W, Jentsch S. Proteasome-mediated protein processing by bidirectional degradation initiated from an internal site. *Nat Struct Mol Biol.* 2006; 13:691–697. [PubMed: 16845392]
57. Mumberg D, Müller R, Funk M. Yeast vectors for the controlled expression of heterologous proteins in different genetic backgrounds. *Gene.* 1995; 156:119–122. [PubMed: 7737504]
58. Saeki Y, Isono E, Toh-E A. Preparation of ubiquitinated substrates by the PY motif-insertion method for monitoring 26S proteasome activity. *Meth Enzymol.* 2005; 399:215–227. [PubMed: 16338358]
59. Schultz J, Milpetz F, Bork P, Ponting CP. SMART, a simple modular architecture research tool: identification of signaling domains. *Proc Natl Acad Sci USA.* 1998; 95:5857–5864. [PubMed: 9600884]
60. Larkin MA, et al. Clustal W and Clustal X version 2.0. *Bioinformatics.* 2007; 23:2947–2948. [PubMed: 17846036]

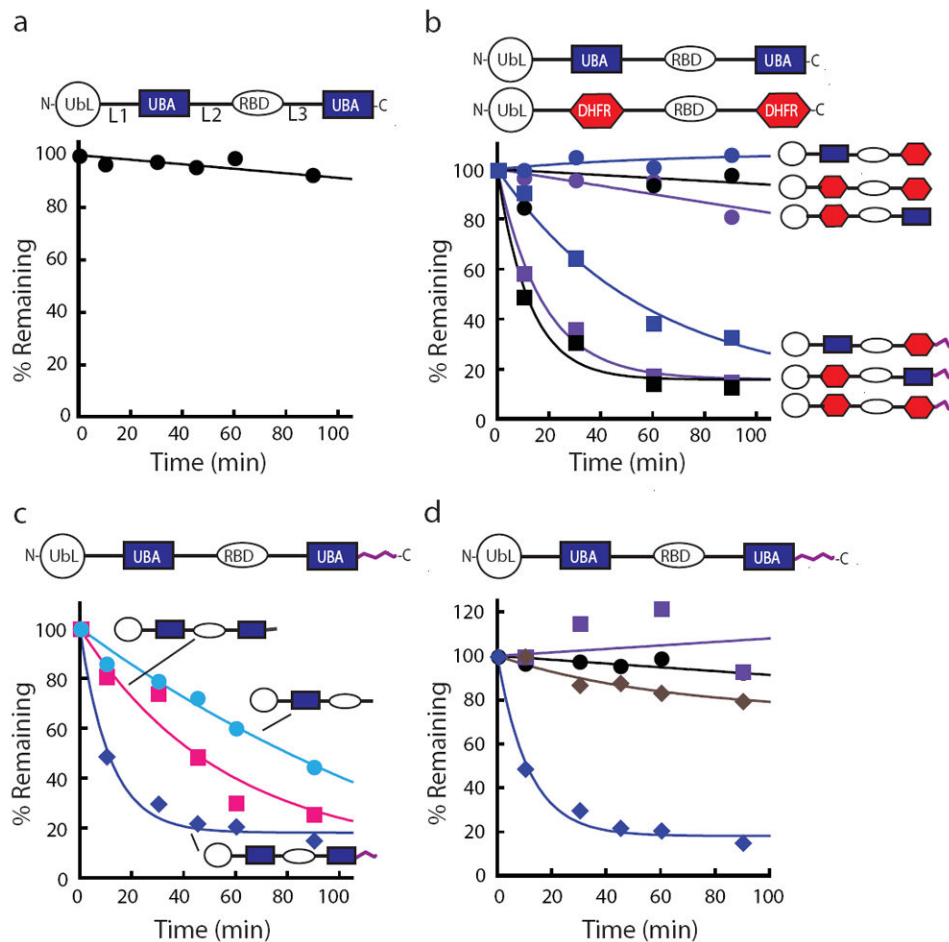


Figure 1. Rad23 escapes proteasome degradation *in vitro* because it lacks an initiation region. The amount of protein remaining over time was plotted as a percentage of the initial total protein as described in the methods section. **(a)** Degradation kinetics of Rad23. Incubation of Rad23 with purified yeast proteasome did not lead to its degradation at 30 °C. **(b)** The stability of Rad23 was not due to the UBA2 domain. Both UBA domains were replaced by DHFR (dihydrofolate reductase) individually or in combination and none of the substrates were degraded by the proteasome. Appending a 95 amino acid unstructured region from *S. cerevisiae* cytochrome *b*₂ to the C terminus of any of the Rad23 hybrid proteins in which either or both of the UBA domains had been replaced with a DHFR domain led to its rapid degradation. **(c)** Adding an initiation region to Rad23 led to its rapid degradation. Unstructured tails of different lengths were placed at the C terminus of Rad23 to serve as initiation regions. Rad23 with either a 39 amino acid unstructured region from the *E. coli* lac repressor (pink squares) or a 95 amino acid unstructured region from *S. cerevisiae* cytochrome *b*₂ (blue diamonds) added as an initiation region led to its degradation. Deletion of the UBA2, leaving a 45 amino acid unstructured region, led to Rad23's degradation (light blue circles). **(d)** Degradation of Rad23 with a 95 amino acid initiation region at its C terminus was proteasome dependent. Rad23-95 substrates were stable when the proteasome was inhibited with MG132 (purple squares) and in the absence of ATP (brown diamonds) in

the degradation reaction and when its UbL domain was deleted (black circles). Rad23-95 was otherwise rapidly degraded by the proteasome (navy diamonds). Data points represent mean values and were calculated from at least three repeat experiments.

Author Manuscript

Author Manuscript

Author Manuscript

Author Manuscript

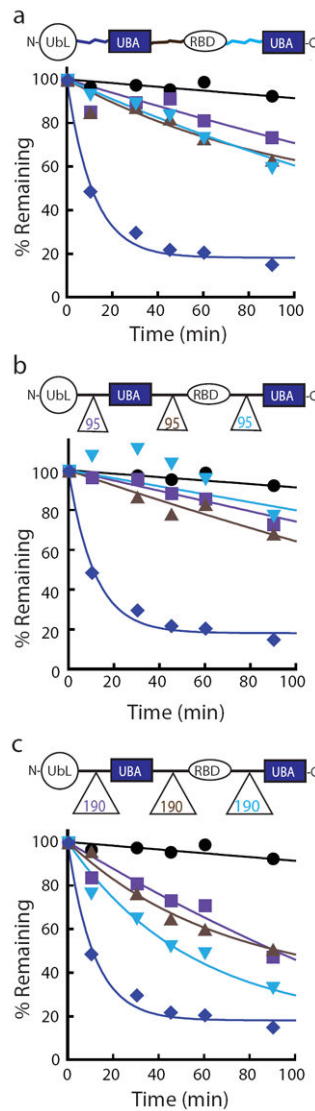


Figure 2. Internal loops of Rad23 are too short to serve as effective initiation regions. Degradation kinetics at 30 °C are shown of Rad23 substrates with different linker regions. The amount of protein remaining over time was plotted as a percentage of the initial total protein as described in the methods and degradation kinetics of Rad23 (black circles) and Rad23-95 (navy diamonds) are shown. **(a)** The amino acid sequences of the linker regions of Rad23 were not responsible for the lack of degradation. Replacement of each linker region with a sequence from *S. cerevisiae* cytochrome *b*₂ of the same length resulted in inefficient degradation by the proteasome. **(b,c)** Initiation regions have to be longer within a protein than at the end of a protein. Insertion of 95 **(b)** or 190 **(c)** amino acid long sequences into the Rad23 linker regions led to increasing degradation of the hybrid proteins. Data points represent mean values and were calculated from at least three repeat experiments.

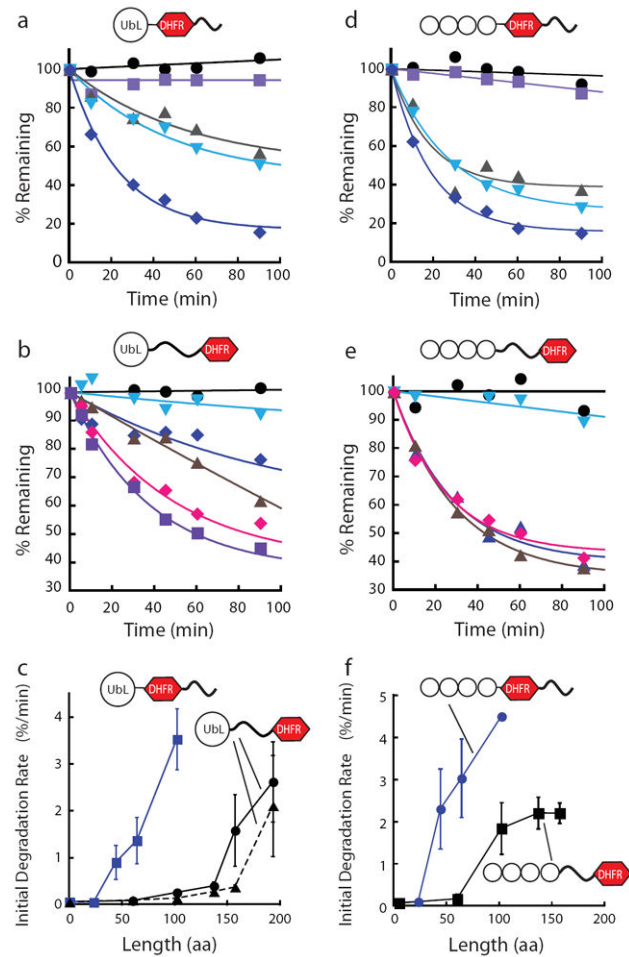


Figure 3.

Initiation length requirements for proteasomal degradation in model proteins. The model substrates with terminal initiation regions contained a UbL or Ub₄ domain attached to a DHFR domain followed by unstructured regions of different lengths at the C terminus. The substrates with internal initiation regions contained a UbL or Ub₄ domain attached to different length unstructured regions followed by a DHFR domain. Degradation experiments were performed at 30 °C. The amount of protein remaining over time was plotted as a percentage of the initial total protein as described in the methods section. For all types of constructs degradation rates increased with the length of the initiation region. (a) Degradation reactions of UbL containing substrates with C-terminal initiation regions. The tails consisted of 23 (purple), 44 (gray), 64 (light blue), and 102 (navy) amino acids derived from *S. cerevisiae* cytochrome *b*₂. (b) Degradation reactions of UbL containing substrates with internal initiation regions, which consisted of 60 (light blue), 102 (navy), 137 (brown), 157 (pink), and 193 (purple) amino acids derived from *S. cerevisiae* cytochrome *b*₂. (c) Initial degradation rates were plotted against the length of the initiation region given as the number of amino acids. Considerably longer initiation regions are required to support robust degradation when these regions are flanked by folded domains than when they are placed at the C terminus of the substrates. The requirement for long initiation regions does not appear

to depend on the details of the amino acid sequence of the initiation region as scrambling the amino acid sequence of the linkers used (black dotted line) did not change the initiation region length dependence of degradation significantly. **(d)** Degradation reactions of ubiquitin-tagged substrates with C-terminal initiation regions; initiation regions were the same as in (a). **(e)** Degradation reactions of ubiquitin-tagged substrates with internal initiation regions; initiation regions are the same as in (b). **(f)** Initial degradation rates of ubiquitin-tagged substrates plotted against the length of the initiation region given as the number of amino acids. Data points represent mean values and error bars show standard errors calculated from at least three repeat experiments.

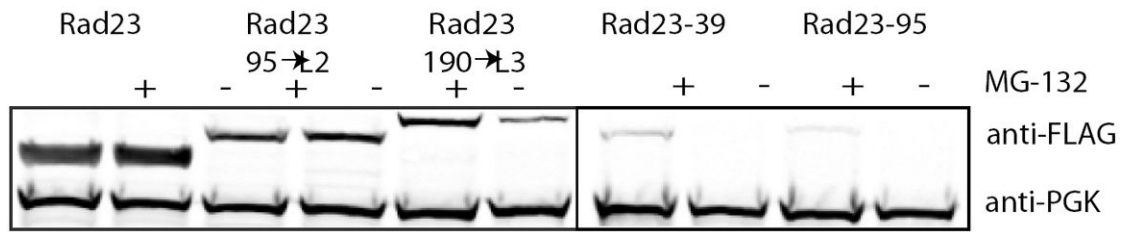


Figure 4.

The stability of Rad23 *in vivo* is also determined by the presence of an initiation region. Rad23 with an N-terminal Flag tag expressed in *S. cerevisiae* accumulated and protein levels were not affected by MG132 as determined by Western blotting for the Flag tag in yeast extracts. Addition of a 39 amino acid long tail to the C terminus of Rad23 (Rad23-39) or insertion of a 190 amino acids long linker into loop 3 (Rad23-190→L3) destabilized the protein and reduced steady-state levels in the cell. Inhibition of proteasomal degradation with MG132 stabilized the Rad23 hybrids and increased their steady state levels. Rad23 with a 95 amino acid long tail (Rad23-95) could not be detected even when the proteasome was inhibited with MG132 but deletion of the UBL domain stabilized the protein sufficiently to allow it to accumulate. Insertion of a 95 amino acid linker into loop 2 did not destabilize the protein noticeably (Rad23-95→L2). No Flag-tagged Rad23 was detected in lysate of cells transfected with plasmid lacking the Rad23 insert and PGK (phosphoglycerate kinase) was measured as a loading control to allow comparison of protein levels in the different lysates.

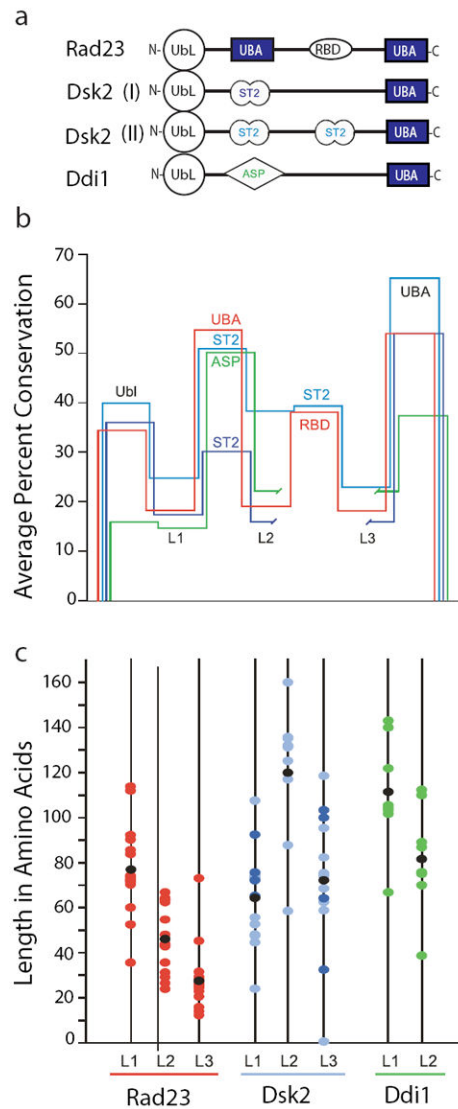


Figure 5.

Analysis of loops within UbL-UBA proteins. Homologues of Rad23, Dsk2, and Ddi1 were retrieved from species selected broadly from evolution (see supplementary information). The loops within these proteins are defined as sequences that fall between motifs found in the SMART⁵⁹ and Pfam⁴¹ databases. **(a)** Schematic of UbL-UBA proteins. Domains and loops represented are not to scale. In addition to UbL and UBA, abbreviations include ST2 (Sti1/Sti1 pair) and ASP (Asp_protease). Note that RBD (Rad4-binding domain) corresponds to the Pfam domain XPC. **(b)** Relative conservation of domains and loops. Conservation was evaluated by aligning individual domains with Clustal W⁶⁰, extracting the pairwise percent conservation, and averaging. Domains are represented by horizontal segments. Rad23 is shown in red, Dsk2 Class I and II are shown in dark and light blue, respectively, and Ddi1 is shown in green. To align all of the UBA domains in the schematic, break points are introduced into the traces for Class I Dsk2 and Ddi1. **(c)** Plot of loop

lengths. The color scheme for the loops is continued from (b). Black dots indicate the average loop length.

Author Manuscript

Author Manuscript

Author Manuscript

Author Manuscript

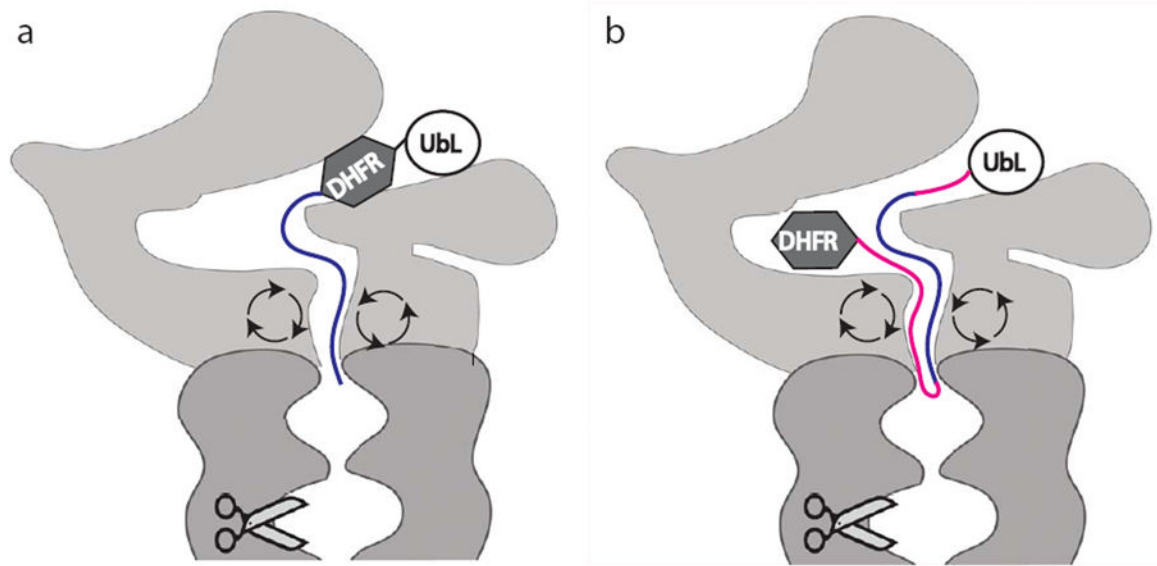


Figure 6.

Schematic representation of the length requirement for internal and terminal initiation regions. Substrates shown contained a UbL domain bound to the proteasome in an arbitrary position attached to either a DHFR (dihydrofolate reductase) domain followed by an initiation region (blue) or an initiation region (red and blue) followed by a DHFR domain. Length requirements for an internal initiation region (red and blue) were at least twice that for a terminal initiation region (blue). Light grey: proteasome caps; dark grey: proteasome core; circular arrows: ATPase subunits; scissors; proteolytic sites.