

Extravasating Neutrophil-derived Microparticles Preserve Vascular Barrier Function in Inflamed Tissue

Kihong Lim¹, Ronen Sumagin² and Young-Min Hyun^{1*}

¹Department of Microbiology and Immunology, David H. Smith Center for Vaccine Biology and Immunology, University of Rochester, Rochester, NY 14642, ²Epithelial Pathobiology and Mucosal Inflammation Research Unit, Department of Pathology and Laboratory Medicine, Emory University School of Medicine, Atlanta, GA 30332, USA

Emerging evidence suggests that gap formation and opening of the endothelial junctions during leukocyte extravasation is actively controlled to maintain the integrity of the vascular barrier. While the role for endothelial cells to this process has been well defined, it is not clear whether leukocytes are also actively contributing to endothelial barrier function. We have recently showed that extravasating leukocytes deposit microparticles on the subendothelium during the late stages of extravasation, which is LFA-1 dependent. Using multiphoton-intravital microscopy (MP-IVM) of mouse cremaster muscle vessels in the current work, we show that microparticle formation and deposition maintains the integrity of the microvascular barrier during leukocyte extravasation. Inhibition of neutrophil-derived microparticle formation resulted in dramatically increased vascular leakage. These findings suggest that deposition of microparticles during neutrophil extravasation is essential for maintaining endothelial barrier function and may result in temporal difference between neutrophil extravasation and an increase in vascular leakage.

[Immune Network 2013;13(3):102-106]

INTRODUCTION

Recent intravital imaging studies revealed that LFA-1 (CD11a/CD18) and Mac-1 (CD11b/CD18) play distinct roles in leukocyte adhesion and crawling (1-3). A study showed that, in

neutrophils, endothelial adhesion was mediated by LFA-1 and that crawling was mediated by Mac-1 (1). However, in monocytes and lymphocytes, crawling was shown to be LFA-1 dependent (2,4). These data indicate that the transmigration of different leukocyte subsets through the endothelium may be distinctly regulated by LFA-1 and/or Mac-1. In the final stage of migration through the endothelial cells and basement membrane during leukocyte extravasation, the leukocytes must detach uropod from the basolateral side of the endothelial layer and/or basement membrane. During uropod detachment of the elongated leukocytes, microparticles are deposited at the subendothelium, and this represents the final step in leukocyte extravasation (5). Ligation of apical endothelial surface receptors, including ICAM-1 during the early stages of leukocyte transendothelial migration has been shown to trigger rearrangement of the interendothelial junctions and increased vascular permeability (6). However, to avoid tissue edema, vascular barrier integrity must be maintained during active leukocyte transendothelial migration. This involves rapid resealing of the vascular endothelial layers upon detachment of the extravasating leukocytes. Leukocytes migrating across endothelium during final detachment from the vascular wall were found to form and deposit microparticles on the basolateral endothelial surface. Thus we examined whether microparticle deposition affects the integrity of the vascular

Received on May 14, 2013. Revised on May 24, 2013. Accepted on June 3, 2013.

© This is an open access article distributed under the terms of the Creative Commons Attribution Non-Commercial License (<http://creativecommons.org/licenses/by-nc/3.0>) which permits unrestricted non-commercial use, distribution, and reproduction in any medium, provided the original work is properly cited.

*Corresponding Author. Young-Min Hyun, Department of Microbiology and Immunology, David H. Smith Center for Vaccine Biology and Immunology, University of Rochester, Rochester, NY 14642, USA. Tel: 585-273-1435; Fax: 585-273-2452; E-mail: young-min_hyun@urmc.rochester.edu

Keywords: Vascular barrier function, Leukocyte extravasation, Neutrophils, Monocytes, Microparticles

Abbreviations: MP-IVM, Multiphoton-intravital microscopy

barrier during leukocyte transendothelial migration. We used MP-IVM to investigate the role for microparticle deposition during leukocyte extravasation. We further specifically depleted neutrophils and monocytes to determine the role for the specific circulating leukocyte subsets in this process. Our data suggest that the CD18⁺ microparticles generated from the tip of neutrophil uropods during detachment contribute to the resealing of the vasculature, thus helping maintain endothelial barrier integrity.

MATERIALS AND METHODS

Mice

CD18-mCFP knock-in mice were generated at the Gene Targeting and Transgenic Core facility at the University of Rochester (5). C57BL/6 and CCR2 knockout mice (7) were maintained in a specific pathogen-free environment at the University of Rochester's animal facility. The Institutional Review Board of the University of Rochester approved all animal experiments.

CD18⁺ microparticle counting from the subendothelium

The cremaster muscles of C57BL/6 mice were superfused with physiological salt solution alone or containing a cocktail of chemokines (30 nM CXCL2, 12.5 nM CXCL12, and 1 nM CCL2) in the presence of 500 μ g of CD11a blocking Ab (M17/4) or control IgG at 37°C for 2 h. Following euthanasia, the vascular wash-out was done with 10 ml of physiological salt solution buffer and then the cremaster muscle was removed from mouse and minced. The minced tissue was treated with 3 ml of 0.5% Collagenase II (Invitrogen) in HBSS containing 3 mM CaCl₂ at 37°C for 1 h. Whole cells were collected by centrifugation at 4,000 g for 20 min and labeled with Alexa488-anti-mouse CD31 Ab at 4°C overnight. The supernatant was subjected to ultracentrifugation to collect the microparticles and labeled with PE conjugated anti-mouse CD18 Ab (M18/2) (8). Then, the ratio of CD18⁺ microparticles to CD31⁺ whole cells was calculated using flow cytometry.

Multiphoton-intravital microscopy (MP-IVM)

Mouse cremaster venules were imaged with MP-IVM as described (5). Texas Red dextran (70,000 Mw, Invitrogen) was i.v. injected (20 mg/kg) via femoral vein to label the blood vessels prior to imaging. During MP-IVM, the core body temperature of the mice was maintained using a warming pad set to 37°C. The blood vessels were stimulated by superfusion of chemokine

(1 nM CXCL2) or bacterial chemoattractant (1 μ M fMLP). To investigate the extravascular blocking effect of LFA-1 on leukocyte extravasation and vascular leakage, 500 μ g of CD11a blocking Ab was superfused onto exteriorized mouse cremaster.

Leukocyte subsets depletion

To investigate the contribution of leukocyte subsets to vascular leakage, leukocyte subsets were depleted and then vascular leakage was measured as described below. Intraperitoneal injection (25 μ g/day for 3 days) of anti-Ly6C/Ly6G Ab (RB6-8C5, Gr1) was performed to deplete neutrophils and inflammatory monocytes, and anti-Ly6G Ab (1A8) was injected to deplete only neutrophils (9-11). Monocyte was depleted by i.v. injection of clodronate liposomes (48 h (200 μ l), 24 h (200 μ l), and 6 h (100 μ l)) before MP-IVM (12,13). CCR2 knockout mice were used to investigate the contribution of inflammatory monocytes to vascular leakage (10,14). Except CCR2 knockout mice, depletions of other leukocyte subsets were done in C57BL/7 mice. These protocols have been shown to deplete more than 90% of the targeted leukocyte subset in mice.

Vascular leakage measurement

Vascular leakage was measured from unstimulated and stimulated cremaster venules. Briefly, Texas Red dextran was i.v. injected into mice. The images of Texas Red signals (dextran leakage) from the cremaster venules were acquired with MP-IVM. The fluorescence ratio (FR) of extravascular Texas Red (EX) to intravascular Texas Red (IN) was calculated by quantifying the mean fluorescence intensity in restricted extravascular and intravascular regions. The mean EX was divided by the mean IN for each time point (FR_{EX/IN}). FR_{EX/IN} was normalized to time 0 (FR₀) as (FR_{EX/IN})/(FR₀) (15). (FR_{EX/IN})/(FR₀) was integrated to measure the accumulated vascular leakage of dextran at each time point. Volocity software (PerkinElmer) was used to measure Texas Red intensity.

$$\text{Vascular leakage} = \int_{t_1}^{t_2} (\Delta FR_{EX/IN}) / (FR_{t_0}) dt + (FR_{EX/IN}) / (FR_{t_0})_{t_1}$$

Statistics

We described the data with $p < 0.05$ as significantly different from Kruskal-Wallis test or the Student *t* test using GraphPad Prism.

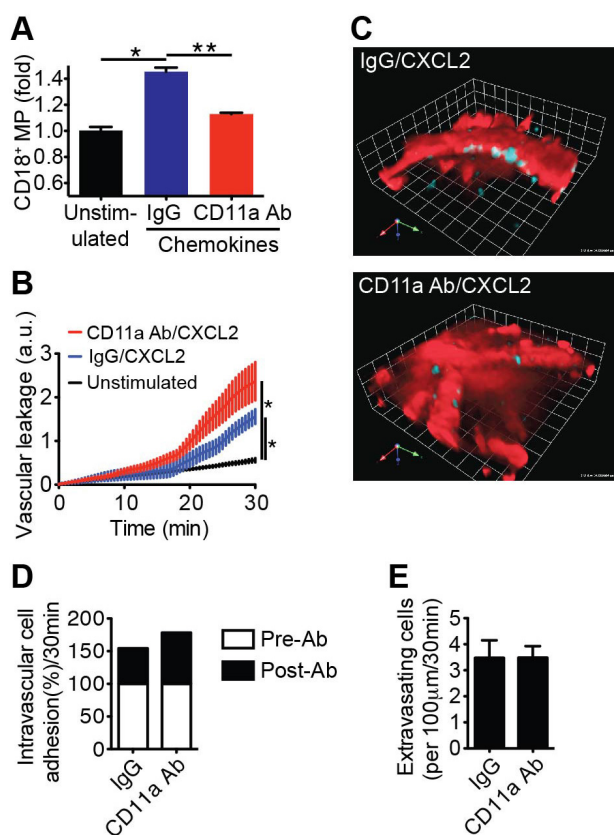


Figure 1. Microparticles derived from extravasating leukocytes regulate vascular leakage in an LFA-1-dependent manner. (A) The numbers of CD18⁺ microparticles and CD31⁺ cells were determined in chemokines-stimulated cremaster superfused with either the IgG control or the CD11a blocking Ab and in unstimulated cremaster. The ratio of CD18⁺ microparticles over CD31⁺ cells was calculated. MP, microparticles. **p* = 0.0004. ***p* = 0.0006. (B) Vascular leakage was measured and calculated using MP-IVM from CXCL2-stimulated venules in the superfusion of control IgG or CD11a blocking Ab. Vascular leakage was averaged over five points measured outside of the venules every 30 sec based on the initial Texas Red intensity. **p* < 0.0001. a.u., Arbitrary unit. (C) A representative image of vascular leakage (Texas Red dextran intensity) after extravascular inhibition of LFA-1 showed significant increase in fluorescence compared to IgG. The still images were taken at 30 min of treatment with CXCL2 and the superfusion of the IgG or CD11a blocking Ab. CD18-mCFP mice were i.v. injected with Texas Red dextran, and the cremaster venules were imaged. Red: Texas Red dextran, Cyan: CD18⁺ leukocytes. (D & E) The cremaster venules of CD18-mCFP mice were stimulated with CXCL2 (1 nM), and the adherent cells in the vasculature were then counted before (pre-Ab: white) and 30 min after (post-Ab: black) superfusion with either the CD11a blocking Ab or control IgG (D). The extravasating leukocytes were counted in the interstitial regions surrounding stimulated venules with LFA-1 Ab or control IgG added to the superfusate (E). The number of extravasating cells was calculated per 100 μm for 30 min.

Results and Discussion

We have recently showed that leukocytes become extremely elongated and deposit microparticles on the subendothelium during extravasation through inflamed vessels in an LFA-1-dependent manner (5). Hereby, we hypothesized that leukocyte-derived microparticles play a protective role, and prevent vascular leakage during leukocyte extravasation, by either forming a physical barrier on the subendothelium or inducing signaling to regulate vascular barrier function.

To investigate this hypothesis, we first quantified the number of β₂ integrin (CD18⁺) containing microparticles formed per endothelial cell of the vasculature in chemokines-stimulated tissue. The number of CD18⁺ microparticles isolated from chemokines-stimulated cremaster tissue was normalized to the total number of CD31⁺ cells isolated from the same tissue. Superfusion of LFA-1 blocking Ab over the extravascular regions of the cremaster muscle dramatically decreased microparticle formation, compared to control IgG superfusion (Fig. 1A). The physical properties of microparticles derived from migrating leukocytes were determined to be <1 μm using flow cytometry (Fig. S1). Therefore, we further examined the effects of microparticle formation on vascular barrier during CXCL2-induced neutrophil migration across the vascular wall. We calculated the vascular leakage in exteriorized mouse cremaster venules by measuring Texas Red fluorescence intensity in the interstitial area adjacent to blood vessels of CD18-mCFP mice, which were i.v. injected with Texas Red dextran. Inhibition of the LFA-dependent microparticle formation by superfusion of the LFA-1 blocking Ab significantly increased dextran leakage (~4.2 fold), compared to the unstimulated condition (Fig. 1B and C). We confirmed that both intravascular leukocyte adhesion and transendothelial migration were not affected by extravascular inhibition of LFA-1 function (Fig. 1D and E). These findings suggest that the observed increase in dextran leakage under this condition was specifically due to decreased formation and deposition of microparticles on the subendothelium.

Neutrophil extravasation is often linked to vascular leakage (16-18) leading to tissue injury in inflammatory models (19,20). Therefore, we expanded our study to determine which subset of circulating leukocytes was primarily responsible for the protective effect on vascular barrier function through deposition of microparticles during extravasation. To examine this, vascular leakage during leukocyte extravasation (induced by fMLP) was further assessed after specific depletion of both/ei-

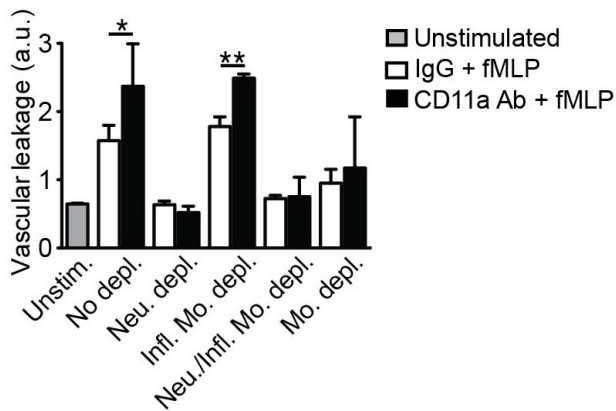


Figure 2. Microparticles derived from extravasating neutrophils regulate vascular barrier function. Vascular leakage was measured using MP-IVM from fMLP-stimulated venules of the leukocyte subset depleted mice after extravascular superfusion of either CD11a Ab or IgG control. Vascular leakage was averaged over 5 points measured outside of the venules every 30 sec based on the initial Texas Red intensity. * $p < 0.05$, ** $p < 0.005$. The vascular leakage was then compared under each condition 30 min after stimulation. a.u., Arbitrary unit. Unstim., Unstimulated; No depl., No depletion; Neu. depl., Neutrophil depletion by i.v. injection of anti-Ly-6G Ab; Infl. Mo. depl., Inflammatory monocyte depletion in CCR2 KO mice; Neu./Infl. Mo. depl., Neutrophil and inflammatory monocyte depletion by i.v. injection of anti-Ly-6G/Ly-6C (Gr1) Ab; Mo. depl., Monocyte depletion by i.v. injection of clodronate liposomes.

ther intravascular neutrophils and/or monocytes, with and without inhibition of LFA-1 (by extravascular superfusion of LFA-1 blocking Ab). Consistent with previous studies (21), Ab-mediated neutrophil depletion showed complete preservation of vascular barrier function independently of inhibition of LFA-1 mediated microparticle formation (Fig. 2). These results suggest that neutrophil extravasation is accompanied by increased vascular leakage and further imply that microparticle deposition by extravasating neutrophils affects vascular leakage. In contrast, inhibition of microparticle formation after depletion of intravascular inflammatory monocytes failed to prevent vascular leakage in stimulated vessels (Fig. 2). Consistently, depletion of both neutrophils and inflammatory monocytes also prevented the increase in vascular leakage during leukocyte extravasation (Fig. 2). Therefore, during leukocyte extravasation in inflammation, neutrophil-derived microparticles play an important role in maintaining vascular barrier function. Interestingly, depletion of intravascular monocytes using clodronate liposomes also prevented vascular leakage regardless of extravascular inhibition of LFA-1 or not (Fig. 2). As monocytes have been shown to facilitate neutrophil trafficking (12,22), it is possible that the

clodronate liposome-mediated depletion of monocytes may decrease vascular leakage by inhibiting transendothelial migration of neutrophils leading to reduced microparticle formation by extravasating neutrophils. In conclusion, these findings provide new evidence for a functional role of neutrophil-derived microparticles in preserving endothelial barrier integrity during leukocyte extravasation.

ACKNOWLEDGEMENTS

This project was financially supported through grant from the American Heart Association (11SDG7520018 to Y-M.H.). The authors have no conflicting financial interests.

CONFLICTS OF INTEREST

The authors have no financial conflict of interest.

REFERENCES

- Phillipson, M., B. Heit, P. Colarusso, L. Liu, C. M. Ballantyne, and P. Kubes. 2006. Intraluminal crawling of neutrophils to emigration sites: a molecularly distinct process from adhesion in the recruitment cascade. *J. Exp. Med.* 203: 2569-2575.
- Shulman, Z., V. Shinder, E. Klein, V. Grabovsky, O. Yeger, E. Geron, A. Montresor, M. Bolomini-Vittori, S. W. Feigelson, T. Kirchhausen, C. Laudanna, G. Shakhar, and R. Alon. 2009. Lymphocyte crawling and transendothelial migration require chemokine triggering of high-affinity LFA-1 integrin. *Immunity* 30: 384-396.
- Sumagin, R., H. Prizant, E. Lomakina, R. E. Waugh, and I. H. Sarelius. 2010. LFA-1 and Mac-1 define characteristically different intraluminal crawling and emigration patterns for monocytes and neutrophils in situ. *J. Immunol.* 185: 7057-7066.
- Auffray, C., D. Fogg, M. Garfa, G. Elain, O. Join-Lambert, S. Kayal, S. Sarnacki, A. CumG. Lauvau, and F. Geissmann. 2007. Monitoring of blood vessels and tissues by a population of monocytes with patrolling behavior. *Science* 317: 666-670.
- Hyun, Y. M., R. Sumagin, P. P. Sarangi, E. Lomakina, M. G. Overstreet, C. M. Baker, D. J. Fowell, R. E. Waugh, I. H. Sarelius, and M. Kim. 2012. Uropod elongation is a common final step in leukocyte extravasation through inflamed vessels. *J. Exp. Med.* 209: 1349-1362.
- Sumagin, R., J. M. Kuebel, and I. H. Sarelius. 2011. Leukocyte rolling and adhesion both contribute to regulation of microvascular permeability to albumin via ligation of ICAM-1. *Am. J. Physiol. Cell Physiol.* 301: C804-813.
- Boring, L., J. Gosling, S. W. Chensue, S. L. Kunkel, R. V. Farese Jr., H. E. Broxmeyer, and I. F. Charo. 1997. Impaired monocyte migration and reduced type 1 (Th1) cytokine re-

- sponses in C-C chemokine receptor 2 knockout mice. *J. Clin. Invest.* 100: 2552-2561.
8. Dalli, J., L. V. Norling, D. Renshaw, D. Cooper, K. Y. Leung, and M. Perretti. 2008. Annexin 1 mediates the rapid anti-inflammatory effects of neutrophil-derived microparticles. *Blood* 112: 2512-2519.
 9. Daley, J. M., A. A. Thomay, M. D. Connolly, J. S. Reichner, and J. E. Albina. 2008. Use of Ly6G-specific monoclonal antibody to deplete neutrophils in mice. *J. Leukoc. Biol.* 83: 64-70.
 10. Soehnlein, O., A. Zernecke, E. E. Eriksson, A. G. Rothfuchs, C. T. Pham, H. Herwald, K. Bidzhekov, M. E. Rottenberg, C. Weber, and L. Lindbom. 2008. Neutrophil secretion products pave the way for inflammatory monocytes. *Blood* 112: 1461-1471.
 11. Woodfin, A., M. B. Voisin, M. Beyrau, B. Colom, D. Caille, F. M. Diapouli, G. B. Nash, T. Chavakis, S. M. Albelda, G. E. Rainger, P. Meda, B. A. Imhof, and S. Nourshargh. 2011. The junctional adhesion molecule JAM-C regulates polarized transendothelial migration of neutrophils in vivo. *Nat. Immunol.* 12: 761-769.
 12. Kreisel, D., R. G. Nava, W. Li, B. H. Zinselmeyer, B. Wang, J. Lai, R. Pless, A. E. Gelman, A. S. Krupnick, and M. J. Miller. 2010. In vivo two-photon imaging reveals monocyte-dependent neutrophil extravasation during pulmonary inflammation. *Proc. Natl. Acad. Sci. U. S. A.* 107: 18073-18078.
 13. Van Rooijen, N. and A. Sanders. 1994. Liposome mediated depletion of macrophages: mechanism of action, preparation of liposomes and applications. *J. Immunol. Methods* 174: 83-93.
 14. Geissmann, F., S. Jung, and D. R. Littman. 2003. Blood monocytes consist of two principal subsets with distinct migratory properties. *Immunity* 19: 71-82.
 15. Kim, J. V., S. S. Kang, M. L. Dustin, and D. B. McGavern. 2009. Myelomonocytic cell recruitment causes fatal CNS vascular injury during acute viral meningitis. *Nature* 457: 191-195.
 16. Björk, J., P. Hedqvist, and K. E. Arfors. 1982. Increase in vascular permeability induced by leukotriene B₄ and the role of polymorphonuclear leukocytes. *Inflammation* 6: 189-200.
 17. Rosengren, S., K. Ley, and K. E. Arfors. 1989. Dextran sulfate prevents LTB₄-induced permeability increase, but not neutrophil emigration, in the hamster cheek pouch. *Microvasc. Res.* 38: 243-254.
 18. Wedmore, C. V. and T. J. Williams. 1981. Control of vascular permeability by polymorphonuclear leukocytes in inflammation. *Nature* 289: 646-650.
 19. Herwald, H., H. Cramer, M. Mörgelin, W. Russell, U. Sollenberg, A. Norrby-Teglund, H. Flodgaard, L. Lindbom, and L. Björck. 2004. M protein, a classical bacterial virulence determinant, forms complexes with fibrinogen that induce vascular leakage. *Cell* 116: 367-379.
 20. Sekido, N., N. Mukaida, A. Harada, I. Nakanishi, Y. Watanabe, and K. Matsushima. 1993. Prevention of lung reperfusion injury in rabbits by a monoclonal antibody against interleukin-8. *Nature* 365: 654-657.
 21. Petri, B., J. Kaur, E. M. Long, H. Li, S. A. Parsons, S. Butz, M. Phillipson, D. Vestweber, K. D. Patel, S. M. Robbins, and P. Kubers. 2011. Endothelial LSP1 is involved in endothelial dome formation, minimizing vascular permeability changes during neutrophil transmigration in vivo. *Blood* 117: 942-952.
 22. Maus, U., K. von Grote, W. A. Kuziel, M. Mack, E. J. Miller, J. Cihak, M. Stangassinger, R. Maus, D. Schlöndorff, W. Seeger, and J. Lohmeyer. 2002. The role of CC chemokine receptor 2 in alveolar monocyte and neutrophil immigration in intact mice. *Am. J. Respir. Crit. Care Med.* 166: 268-273.