

A novel automatable enzyme-coupled colorimetric assay for *endo*-1,4- β -glucanase (cellulase)

David Mangan¹ · Claudio Cornaggia¹ · Vincent McKie¹ · Tadas Kargelis¹ · Barry V. McCleary¹

Received: 9 February 2016 / Accepted: 21 March 2016 / Published online: 6 April 2016
© Springer-Verlag Berlin Heidelberg 2016

Abstract *endo*-1,4- β -Glucanase (*endo*-cellulase, EC 3.2.1.4) is one of the most widely used enzymes in industry. Despite its importance, improved methods for the rapid, selective, quantitative assay of this enzyme have been slow to emerge. In 2014, a novel enzyme-coupled assay that addressed many of the limitations of the existing assay methodology was reported. This involved the use of a bifunctional substrate chemically derived from cellotriose. Reported herein is a much improved version of this assay employing a novel substrate, namely 4,6-*O*-(3-ketobutylidene)-4-nitrophenyl- β -D-cellopentaoside.

Keywords *endo*-1,4- β -Glucanase · Cellulase · Assay · Colorimetric · CELLG5 · Automation

Introduction

endo-1,4- β -glucanase (EG, EC 3.2.1.4) finds use in a wide range of industrial applications including finishing and biopolishing in the textiles industry, [1] improving softness and colour brightness of cottons in the detergent industry, [2, 3] and deinking and fiber polishing in the pulp and paper processing industries [4]. It is also employed to hydrolyse β -

glucan to increase the digestibility of cereal grain in the animal feed industry [5], to reduce viscosity of cereal feedstock slurries used in the biofuel industry [6] and to reduce wort viscosity in the malting/brewing industries [7, 8].

endo-Glycosyl hydrolases have been traditionally assayed using either reducing sugar [9, 10] or viscometric methods [11]. In the case of *endo*-1,4- β -glucanase (EC 3.2.1.4, EG), the native substrate cellulose is almost completely insoluble in aqueous media and chemically modified versions of the polysaccharide with improved water solubility, typically containing carboxymethyl functionalisation (CM-Cellulose), have been employed in its place but these methods are labour intensive and time consuming. Dyed polysaccharide substrates were reported in the 1980s [12] as sensitive and selective alternatives to the existing methodology and soon after became commercially available. This class of substrates represented a very significant improvement in the convenience afforded to a user and are limited only by the fact that (a) a filtration step or centrifugation step required in their application precludes their use in automated procedures and (b) an unambiguously chemically defined substrate would be preferable in order to remove the possibility of any batch to batch variability. Cellooligosaccharides, borohydride-reduced cellooligosaccharides [13], and nitrophenyl cellooligosaccharides [14–17] are all useful substrates for the characterisation of EGs in terms of subsite mapping and binding studies but lack general applicability for widespread use as EG substrates in crude samples containing competing hydrolytic enzymes (e.g., β -glucosidase and cellobiohydrolase).

Recently, a coupled enzyme activity assay for EG was reported employing 4,6-*O*-benzylidene-2-chloro-4-nitrophenyl- β -D-cellotriside (**1**) [18]. The analogous fluorimetric assay employing 4,6-*O*-benzylidene-4-methylumbelliferyl- β -D-cellotriside allowing improved sensitivity (**2**) was reported soon after [19]. The principle of these

Electronic supplementary material The online version of this article (doi:10.1007/s00216-016-9507-y) contains supplementary material, which is available to authorized users.

✉ David Mangan
david@megazyme.com

¹ Megazyme International Ireland, Bray Business Park, Southern Cross Road, Bray, County Wicklow A98 YV29, Ireland

assays is outlined in Fig. 1. Taking substrate **1** as an example; 0.1 mL of substrate solution containing ancillary β -glucosidase is added to 0.1 mL of enzyme extract containing EG. EG acts to liberate 2-chloro-4-nitrophenyl- β -D-glucopyranoside which is rapidly hydrolysed to 2-chloro-4-nitrophenol (CNP) and glucose by the β -glucosidase present with the substrate. After 10 min, the enzymatic reactions are stopped by the addition of 3 mL of alkaline buffer solution which also ensures complete deprotonation of (and therefore maximum absorption by) CNP.

The use of these enzyme-coupled procedures allowed for the rapid and selective assay of EG in a format that was readily suited to automation. However, a number of limitations exist with the use of substrates **1** and **2** in the desired application.

1. The relative rate of hydrolysis of substrates **1** and **2** compared to the rate of hydrolysis of carboxymethyl cellulose (CMC-4M) varied considerably across a number of EGs. This was to be expected as the ability of EG to hydrolyse cellooligosaccharides of DP 3–6 is known to be highly dependent on the source of the enzymes [13]. This variability was undesirable from the perspective of trying to draw relevant information concerning predicted hydrolytic efficacy of EG on the native substrate from results obtained using the synthetic substrates **1** and **2**.
2. The use of dimethyl sulfoxide (DMSO) as a co-solvent was necessary to solubilise substrates **1** and **2** as these compounds exhibited somewhat poor water solubility. The solution of substrate **1** contained 33 % v/v DMSO and although this did not inhibit or destabilise the β -glucosidase present as an ancillary enzyme, the resulting 16.5 % v/v DMSO concentration in the assay incubation proved sufficient to inhibit certain EGs.

3. CNP ($pK_a = 5.45$) was originally chosen as a UV-absorbing chromophore over the more commonly employed 4-nitrophenol (NP, $pK_a = 7.18$) because the former provided for the potential to perform kinetic assays by reading the absorbance directly during assay incubations. Although this feature proves advantageous for the assay of those EGs with a suitable pH optimum (>5.5), the lower pK_a associated with CNP also significantly increases the leaving group ability of the chromophore making substrate **1** potentially more prone to spontaneous hydrolysis at elevated temperature or in acidic/basic conditions than its NP analogue.

Each of these limitations was addressed and overcome in the current study.

Materials and methods

Materials

Cellopentaose (Cat. No. O-CPE), cellohexaose (Cat. No. O-CHE), carboxymethyl cellulose 4M (Cat. No. P-CMC4M), thermostable β -glucosidase (*Thermotoga maritima*; accession number Q08638, Cat. No. E-BGOSTM) and highly purified *endo*-1,4- β -glucanases from *Trichoderma longibrachiatum* (accession number Q12714, Cat. No. E-CELTR), *Bacillus amyloliquefaciens* (accession number Q8RPQ6, Cat. No. E-CELBA), *T. maritima* (accession number Q9X273, Cat. No. E-CELTM) and *Aspergillus niger* (O74705, Cat. No. E-CELAN), were obtained from Megazyme International, Ireland. All other chemicals used in organic synthesis were purchased from Sigma Aldrich, Lennox Laboratory Supplies

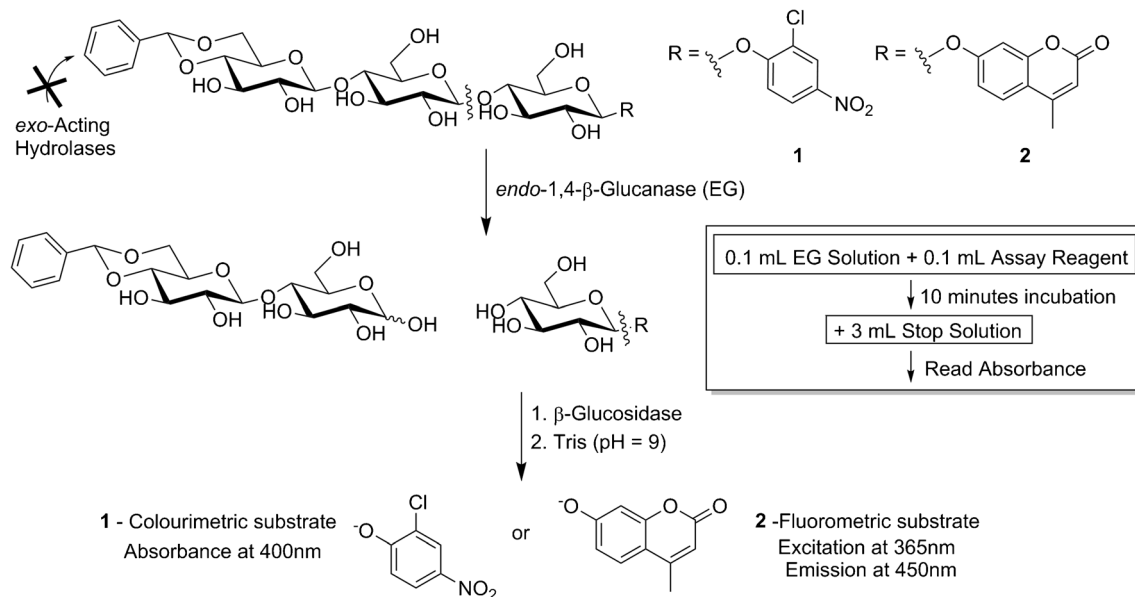


Fig. 1 Overview of the enzyme-coupled assay of EG using substrates **1** and **2** in the presence of ancillary thermostable β -glucosidase

or Acros Organics and were analytical reagent grade. A Brüker Avance 400 was employed for ^1H (400.13 MHz) and ^{13}C (100.61 MHz) NMR spectra. Resonances δ , are in ppm units downfield from an internal reference in $\text{C}_2\text{D}_6\text{SO}$ ($\delta\text{H}=2.50$). Mass spectrometry analysis was performed with a Q-Tof Premier Waters Maldi-quadrupole time-of-flight (Q-Tof) mass spectrometer equipped with Z-spray electrospray ionisation (ESI) and matrix-assisted laser desorption ionisation (MALDI) sources. Silica gel Davisil (Fisher Scientific) was used for column chromatography. All enzyme incubations were performed in duplicate and the mean absorbance value taken. One unit of EG activity is defined as either the amount of enzyme required to release 1 μmol of glucose reducing sugar equivalents per minute from CM-cellulose 4 M (10 mg/mL) under suitable conditions or the amount of enzyme required to release 1 μmol of 4-nitrophenolate/min at 40 °C under the standard CELLG5 assay conditions (“Standard assay of EG using compound 7 in the presence of thermostable β -glucosidase – CELLG5 assay” section). One unit of β -glucosidase activity is defined as the amount of enzyme required to release 1 μmol of 4-nitrophenol/min from 4-nitrophenyl- β -D-glucopyranoside (5 mM) in a suitable buffer at the enzyme’s optimum pH.

Colorimetric substrates

4,6-*O*-Benzylidene-2-chloro-4-nitrophenyl- β -D-cellopentaoside (3) and 4,6-*O*-benzylidene-2-chloro-4-nitrophenyl- β -D-cellohexaoside (4) were synthesized from the corresponding cellooligosaccharides using previously described synthetic methodology [18, 20].

4,6-*O*-Benzylidene-2-chloro-4-nitrophenyl- β -D-cellopentaoside (3)

All MS data and NMR spectra are included in the Electronic Supplementary Material (ESM).

Yield: 6 % from D-cellopentaose. ^1H NMR (400 MHz $\text{C}_2\text{D}_6\text{SO}$) δ 3.02–3.20 (m, 4H), 3.28–3.91 (m, 25H), 4.14–4.26 (m, 1H), 4.33 (d, $J=7.03$ Hz, 1H (anom)), 4.35 (d, $J=6.77$ Hz, 1H (anom)), 4.39 (d, $J=7.78$ Hz, 1H (anom)), 4.51 (d, $J=7.78$ Hz, 1H (anom)), 4.52–4.57 (m, 1H), 4.66–4.79 (m, 6H), 4.83 (br s, 1H), 5.35 (d, $J=7.78$ Hz, 1H (anom)), 5.40–5.50 (m, 4H), 5.57 (d, $J=5.02$ Hz, 1H), 5.60 (s, 1H), 5.69 (d, $J=5.27$ Hz, 1H), 7.35–7.53 (m, 6H), 8.23 (dd, $J=9.03$, 2.76 Hz, 1H), 8.35 (d, $J=2.76$ Hz, 1H); ^{13}C NMR (100 MHz, $\text{C}_2\text{D}_6\text{SO}$) δ 60.2, 60.5, 60.8, 60.8, 66.4, 68.1, 73.2, 73.3, 73.5, 73.5, 73.6, 74.7, 74.7, 75.3, 75.3, 75.3, 75.3, 75.4, 75.4, 75.7, 79.4, 79.9, 80.8, 80.8, 80.9, 99.9, 101.1, 103.2, 103.3, 103.4, 103.5, 116.1, 122.7, 124.7, 126.1, 126.8, 126.8, 128.5, 128.5, 129.4, 138.1, 142.0, 158.1; HRMS ES^+ $[\text{M}+\text{Na}]^+$ Calc. 1094.2732, Found 1094.2781; mp 242–244 °C

4,6-*O*-Benzylidene-2-chloro-4-nitrophenyl- β -D-cellohexaoside (4)

All MS data and NMR spectra are included in the ESM.

Yield: 4 % from D-cellohexaoside. ^1H NMR (400 MHz $\text{C}_2\text{D}_6\text{SO}$) δ 3.01–3.18 (m, 5H), 3.23–4.02 (m, 30H), (m, 16H), 5.22–5.82 (m, 9H), 7.22–7.60, (m, 6H), 8.23 (dd, $J=9.03$, 2.76 Hz, 1H), 8.35 (d, $J=2.76$ Hz, 1H); ^{13}C NMR (100 MHz, $\text{C}_2\text{D}_6\text{SO}$) δ 59.8, 60.1, 60.4, 60.4, 60.4, 66.0, 67.7, 72.8, 72.9, 73.0, 73.0, 73.0, 73.2, 74.3, 74.3, 74.8, 74.8, 74.8, 74.9, 74.9, 74.9, 75.0, 75.0, 75.3, 79.0, 79.4, 80.4, 80.4, 80.5, 80.5, 99.5, 100.7, 102.8, 102.9, 102.9, 102.9, 103.1, 115.7, 122.3, 124.3, 125.7, 126.4, 126.4, 128.1, 128.1, 129.0, 137.7, 141.6, 157.7; HRMS ES^+ $[\text{M}+\text{Na}]^+$ Calc. 1256.3260, Found 1256.3320; mp 255–258 °C

4,6-*O*-(3-ketobutylidene)-4-nitrophenyl- β -D-cellopentaoside (7)

4-Nitrophenyl- β -D-cellopentaoside was prepared from cellopentaose following the previously described synthetic methodology [20]. The product obtained was carried into the 4,6-*O*-(3-ketobutylidene) acetal formation reaction without purification according to the following procedure. To a solution of crude 4-nitrophenyl- β -D-cellopentaoside (2 g, 2.11 mmol) and *p*-toluenesulfonic acid monohydrate (118 mg, 0.62 mmol) under an argon atmosphere in anhydrous DMSO (8 mL), was added 4-methoxy-3-butene-2-one (420 μL , 4.14 mmol) via syringe. The reaction was heated to 50 °C and stirred for 5 h at reduced pressure (30 mbar), then cooled to room temperature. Triethylamine (129 μL , 0.93 mmol) was added via syringe to the reaction mixture which was then precipitated by adding it slowly to EtOH (8 mL). The resulting solid was first absorbed onto silica gel and semi-purified by flash chromatography. 4,6-*O*-(3-ketobutylidene)-4-nitrophenyl- β -D-cellopentaoside was obtained as a white solid in 5 % overall yield from D-cellopentaose following repeated recrystallisations from EtOH/H₂O.

All MS data and NMR spectra are included in the ESM.

^1H NMR (400 MHz $\text{C}_2\text{D}_6\text{SO}$) δ 2.12 (s, 3H), 2.65–2.83 (m, 2H), 2.95–3.93 (m, 29H), 3.96–4.13 (m, 1H), 4.24–4.58 (m, 5H), 4.63–4.89 (m, 7H), 4.97, (br s, 1H), 5.11–5.26 (m, 1H), 5.27–5.58 (m, 6H), 7.24 (d, $J=7.78$ Hz, 2H), 8.22 (d, $J=7.78$ Hz, 2H); ^{13}C NMR (100 MHz, $\text{C}_2\text{D}_6\text{SO}$) δ 30.7, 48.1, 59.9, 60.2, 60.4, 60.4, 65.9, 67.4, 72.8, 73.0, 73.2, 73.1, 73.1, 74.4, 74.4, 74.8, 74.9, 74.9, 75.0, 75.0, 75.0, 75.3, 79.1, 79.6, 80.1, 80.4, 80.5, 98.4, 99.5, 102.9, 103.0, 103.0, 103.2, 116.7, 116.7, 125.9, 125.9, 141.9, 162.4, 204.7; HRMS ES^+ $[\text{M}+\text{Na}]^+$ Calc. 1040.3070, Found 1040.3083; mp 259–263 °C

Preparation of assay reagents containing ancillary β -glucosidase

A solution of compounds **1**, **3**, **4**, **5** and **6** (1 mL, 10 mM in DMSO) was diluted with H₂O (2 mL) to give 3.3 mM solutions (3 mL, 33 % v/v DMSO/H₂O). Thermostable β -glucosidase (100 μ L, 3.2 M (NH₄)₂SO₄, 400 U/mL) was then added and mixed by swirling to give a final concentration of 13.3 U/mL. Note that for compounds **5** and **6**, the 3.3 mM solution should be prepared immediately before use from solutions pre-equilibrated to 40 °C and then maintained at 40 °C to avoid rapid precipitation of the substrate.

Compound **7** was handled as described above to give a 3.3 mM solution in 10 % v/v DMSO/H₂O containing 20 U/mL thermostable β -glucosidase. This solution is termed the CELLG5 reagent.

Enzymatic assays

Enzymatic hydrolysis of a series of 4,6-*O*-benzylidene-2-chloro-4-nitrophenyl- β -D-cellooligosaccharides (DP2-6)

The relative rates of hydrolysis of **1**, **3**, **4**, **5** and **6** by *A. niger* EG (Fig. 2) were determined by the incubation of substrate solutions (0.1 mL, 3.3 mM, 33 % v/v DMSO/H₂O) containing thermostable β -glucosidase (1.33 U) with a solution of *A. niger* EG (0.1 mL, 17.6 mU on CMC-4M, 14.8 mU on CELLG5) at 40 °C. Reaction was terminated at 0, 3, 6, 9 and 12 min by adding 3 mL of 2 % w/v Tris solution (pH 9) with mixing. The absorbance values were read at 400 nm against the time zero reading for the respective substrate.

CELLG5 assay development

To determine the effect of substrate concentration (Fig. 3) on the rate of hydrolysis of **7** by *T. longibrachiatum* EG and *A. niger* EG, 0.1 mL of **7** (0.22–3.00 mM) in the presence of thermostable β -glucosidase (2 U), was incubated with either 0.1 mL of *T. longibrachiatum* EG (15.3 mU on CMC-4M,

14.6 mU on CELLG5) and *A. niger* EG (22.0 mU on CMC-4M, 17.4 mU on CELLG5) in 100 mM sodium acetate buffer (pH 4.5) at 40 °C. The reaction was terminated after fixed time intervals by adding 3 mL of 2 % w/v Tris solution (pH 9.0) and absorbance measured at 400 nm. K_M values were calculated using Prism Version 6.04.

The effect of β -glucosidase concentration (Fig. 4) on the rate of increase in absorbance at 400 nm was determined by preparing solutions containing **7** (3.3 mM) and β -glucosidase (1.7–20 U/mL) and was determined as follows: aliquots (0.1 mL) of the reagent solutions were incubated with *T. longibrachiatum* EG (0.1 mL, 100 mM sodium acetate, 18.9 mU on CMC-4M, 18.0 mU on CELLG5) at 40 °C and reaction terminated after 0, 3, 6, and 9 min by adding 3 mL of 2 % w/v Tris solution (pH 9.0).

Standard assay of EG using compound **7** in the presence of thermostable β -glucosidase – CELLG5 assay

A pre-equilibrated aliquot of EG (0.1 mL, 0–20 mU on CMC-4M, 100 mM suitable pH buffer) was added to a pre-equilibrated aliquot of compound **7** solution (0.1 mL, 3.3 mM, 10 % v/v DMSO/H₂O) containing thermostable β -glucosidase (2 U) and the mixture was incubated at 40 °C for exactly 10 min. The reaction was terminated by adding 3 mL of 2 % w/v Tris solution (pH 9). The tube contents were well mixed and the absorbance measured at 400 nm against a reagent blank. One unit of activity is the amount of enzyme required to release 1 μ mol of 4-nitrophenolate/min at 40 °C.

Comparison of CELLG5 with CELLG3

Standard curves for the action of *T. longibrachiatum*, *A. niger*, *B. amyloliquefaciens*, and *T. maritima* EGs on CELLG5 (Fig. 5) were determined by performing the standard CELLG5 assay on these enzymes using the following EG concentrations and buffers: *T. longibrachiatum* (0–18.0 mU/assay on CMC-4M, 0–17.1 mU/assay on CELLG5, 100 mM sodium acetate, pH 4.5), *A. niger* (0–22.0 mU/assay on CMC-4M, 0–17.4 mU/assay on CELLG5, 100 mM sodium acetate,

Fig. 2 Incubation of compounds **1**, **3**, **4**, **5** and **6** (0.1 mL, 3.3 mM, 33 % v/v DMSO/H₂O) containing thermostable β -glucosidase (1.33 U) by *A. niger* EG (0.1 mL, 17.6 mU, 100 mM sodium acetate, pH 4.5). Reactions were stopped at 3, 6, 9 and 12 min by the addition of Tris buffer solution (3.0 mL, pH 9) and absorbances read at 400 nm

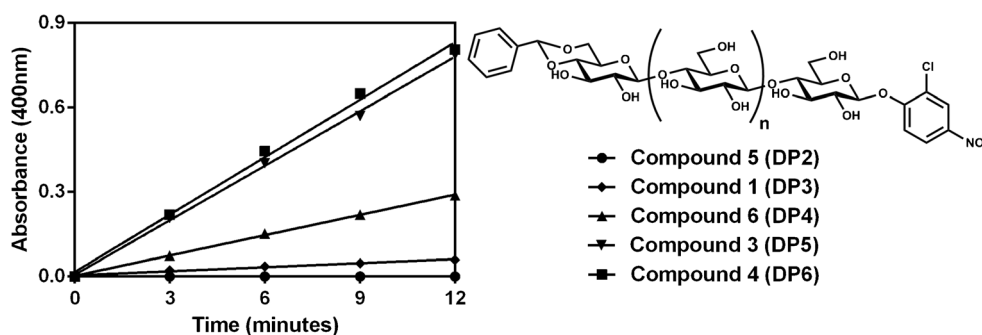
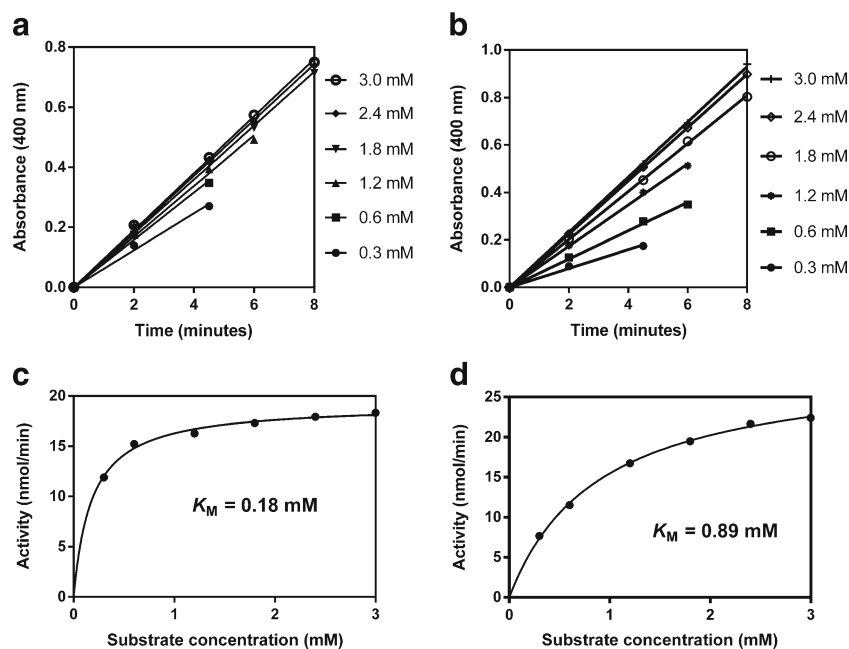


Fig. 3 Effect of substrate 7 concentration on reaction kinetics over 8 min in the presence of **a** *T. longibrachiatum* EG (15.3 mU/assay on CMC-4M, 14.6 mU/assay on CELLG5) and **b** *A. niger* EG (22.0 mU/assay on CMC-4M, 17.4 mU/assay on CELLG5) plus β -glucosidase (2 U/assay) in pH 4.5 100 mM sodium acetate at 40 °C. Determination of the Michaelis-Menten K_M constant for **c** *T. longibrachiatum* EG and **d** *A. niger* EG on substrate 7



pH 4.5), *B. amyloliquefaciens* (0–17.0 mU/assay on CMC-4M, 0–15.4 mU/assay on CELLG5, 100 mM sodium phosphate, pH 6), *T. maritima* (0–15.0 mU/assay on CMC-4M, 0–16.1 mU/assay on CELLG5, sodium phosphate, pH 6).

To determine the effect of reducing the level of DMSO cosolvent required (Fig. 6), the standard CELLG5 assay was performed using *A. niger* EG (17.6 mU/assay on CMC-4M, 14.8 mU/assay on CELLG5) while varying the level of DMSO present in the CELLG5 reagent from 5–30 % v/v.

To determine the thermal stability (Fig. 8a) observed for CELLG5 and CELLG3 a solution of substrate 1 or 7 (0.1 mL, 3.3 mM in 33 % v/v DMSO/H₂O) was added to buffer solution (0.1 mL, 100 mM sodium acetate, pH 4.5) and incubated for 10 min at 60 °C, 70 °C, 80 °C and 90 °C. The incubation was stopped by the addition of 3 mL of 2 % w/v Tris solution (pH 9). The tube contents were well mixed and the absorbance measured at 400 nm against a reagent blank.

To determine the alkaline stability (Fig. 8b) observed for CELLG5 and CELLG3, a typical assay solution was prepared by adding a solution of compound 1 or 7 (0.1 mL, 3.3 mM in

33 % v/v DMSO/H₂O) to buffer solution (0.1 mL, 100 mM sodium acetate, pH 4.5). To this assay solution was added a range of stop solutions (3 mL, 100 mM sodium carbonate, pH 11, 12 and 13) which were adjusted to the required pH using 4 M NaOH. The absorbance at 400 nm was recorded continuously over 30 min.

Long-term CELLG5 reagent stability

CELLG5 reagent was stored at –20 °C, 4 °C and 25 °C. The standard CELLG5 assay was performed using each of these reagents with a standardised solution of *T. longibrachiatum* EG (172 mU/mL on CMC-4M, 164 mU/mL on CELLG5) over a period of 3 months. Blank and reaction absorption values were monitored over this time period.

Repeatability and reproducibility using CELLG5

The standard CELLG5 assay was performed on three samples containing *T. longibrachiatum* EG (58, 86 and 172 mU/mL on

Fig. 4 Effect of β -glucosidase concentration on reaction kinetics over 9 min in the presence of *T. longibrachiatum* EG (18.9 mU/assay on CMC-4M, 18.0 mU/assay on CELLG5) and substrate 7 (1.67 mM) in pH 4.5 100 mM sodium acetate at 40 °C

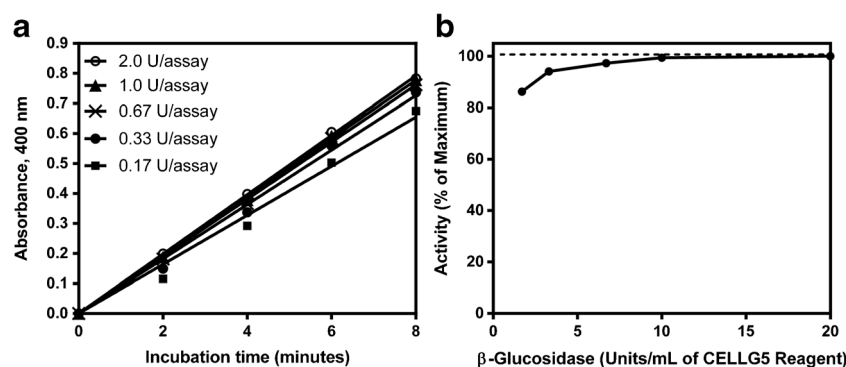
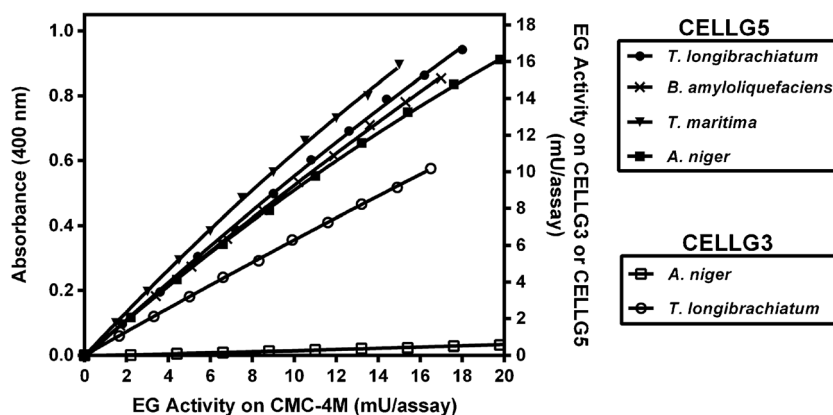


Fig. 5 Standard curves relating absorbance increase at 400 nm observed with CELLG3 and CELLG5 reagents to *T. longibrachiatum*, *A. niger*, *T. maritima* and *B. amyloliquefaciens* EG activity on CMC-4M at 40 °C in pH 4.5 100 mM sodium acetate



CMC-4M; 55, 82 and 164 mU/mL on CELLG5) by two analysts on two consecutive days. The mean and standard deviation of the blank reaction value was determined from 10 replicates.

Automated CELLG5 assay

A standard curve for the action of *T. longibrachiatum* EG was created for the Chemwell-T automated CELLG5 assay (Fig. 9) by the incubation of CELLG5 reagent (25 μ L, 3.3 mM, 10 % v/v DMSO/H₂O) containing thermostable β -glucosidase (0.5 U) with a solution of *T. longibrachiatum* EG (25 μ L, 2.1–11.1 on CMC-4M, 1.9–9.5 mU on CELLG5, 100 mM sodium acetate, pH 4.5) at 37 °C for 10 min. The reaction was terminated by the addition of stop buffer (300 μ L, 500 mM sodium carbonate, pH 12) and the absorbance was read at 400 nm.

Standard assay for EG using CM-cellulose 4 M (10 mg/mL) by reducing sugar determination [9, 10, 13]

To a pre-equilibrated aliquot of CM-cellulose 4 M (0.5 mL, 10 mg/mL) in 100 mM sodium acetate buffer (pH 4.5) or 100 mM sodium phosphate (pH 6.0) a pre-equilibrated aliquot of EG was added. The resulting solution was mixed on a vortex stirrer and incubated at 40 °C. Incubations were terminated by addition of Nelson-Somogyi solution C (0.5 mL) at

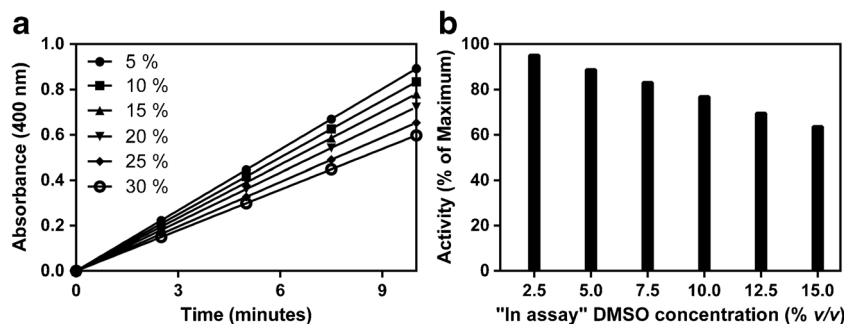
0, 3, 6, 9 and 12 min. The colour was developed according to the Nelson-Somogyi procedure and incubation tubes centrifuged at 1500 \times g for 10 min to remove insoluble CM-cellulose 4 M. The absorbance was measured at 520 nm against a substrate/reagent blank and a glucose standard solution (50 μ g) was included. One unit of activity is the amount of enzyme required to release 1 μ mol of glucose reducing sugar equivalents/min at 40 °C and the pH used in the particular assay.

Results and discussion

Colorimetric *endo*-cellulase substrate requirements

In order to fully probe the effect of varying the chain length of the cellooligosaccharide core for this class of cellulase substrates, two novel substrates 4,6-*O*-benzylidene-2-chloro-4-nitrophenyl- β -D-cellopentaoside (**3**) and 4,6-*O*-benzylidene-2-chloro-4-nitrophenyl- β -D-cellohexaoside (**4**) were prepared using methodology described previously [18]. These substrates were used to assay *A. niger* EG under the conditions described in the “Enzymatic hydrolysis of a series of 4,6-*O*-benzylidene-2-chloro-4-nitrophenyl- β -D-cellooligosaccharides (DP2-6)” section alongside compounds **1**, **5** and **6** which had been prepared and fully characterised previously [18]. The results shown in Fig. 2 highlight the need for the target substrate to

Fig. 6 Effect of DMSO concentration on reaction kinetics over 10 min in the presence of *A. niger* EG (17.6 mU/assay on CMC-4M, 14.8 mU/assay on CELLG5), substrate **7** (1.67 mM) and thermostable β -glucosidase (2 U/assay) in pH 4.5 100 mM sodium acetate at 40 °C



contain a celooligosaccharide core of at least DP5 to ensure near maximal hydrolytic activity. From this experiment it also emerged that substrates **3** and **4** exhibited much lower water solubility than their shorter chain analogues. The hexasaccharide **4** in particular needed to be used immediately once the substrate solution had been prepared as extensive precipitation would occur within 10–20 min even at 40 °C. Considering this data, it was decided to synthesise 4,6-*O*-(3-ketobutylidene)-4-nitrophenyl- β -D-cellopentaoside (**7**) as a new substrate for EG. The 3-ketobutylidene acetal had been employed by Ishimaru and co-workers [21–23] for a similar *blocking* role in an analogous maltooligosaccharide substrate in order to achieve higher water solubility than that observed for the benzylidene acetal. The synthesis proved relatively straightforward and gratifyingly, compound **7** exhibited much improved water solubility over its pentasaccharide analogue **3** requiring only 10 % *v/v* DMSO as a co-solvent to prevent precipitation at 3.3 mM.

Formulation of CELLG5 reagent

The K_M for compound **7** was calculated as 0.19 mM and 0.91 mM for *T. longibrachiatum* EG and *A. niger* EG respectively as described in “CELLG5 assay development” section and shown in Fig. 3. The optimum level of ancillary β -glucosidase required to ensure maximum sensitivity in the assay of *T. longibrachiatum* EG was determined empirically to be 2 U/assay as described in “CELLG5 assay development” section and shown in Fig. 4. This β -glucosidase content was used in all subsequent assays and the term CELLG5 is used from here on to describe an assay reagent composed of a solution of compound **7** (3.3 mM in 10 % *v/v* DMSO) containing 20 U/mL thermostable β -glucosidase. The term CELLG3 is used to describe a solution of compound **1** (3.3 mM in 33 % *v/v* DMSO) containing 6.7 U/mL thermostable β -glucosidase which had been shown previously to be sufficient to ensure maximum assay sensitivity [18].

Investigation into the use of CELLG5 with EGs from various sources

The CELLG5 reagent was employed to assay four EGs from *T. longibrachiatum*, *A. niger*, *B. amyloliquefaciens* and *T. maritima*. These EGs were also assayed on CMC-4M using the Nelson-Symogyi reducing sugar method described in “Standard assay for EG using CM-cellulose 4 M (10 mg/mL) by reducing sugar determination [9, 10, 13]” section. The standard curves for these four EGs on the CELLG5 reagent are outlined in Fig. 5. Also included in this figure are the standard curves for two of the four EGs on the CELLG3 reagent which were used to draw a comparison between the two reagents. It is evident that there is very marginal difference observed in terms of hydrolytic rate between CMC-4M

and the small molecule substrate in the case of CELLG5 while a stark difference of up to 20-fold is observed in the case of CELLG3. This experiment highlights the fact that the increase in DP from three to five corresponding to the evolution of CELLG3 into CELLG5 has apparently conferred a universal applicability of the latter across a wide range of EGs. Figure 5 clearly shows how activity units calculated through the reducing sugar assay on CMC-4M are almost interchangeable with the activity units calculated from the absorbance obtained in the CELLG5 assay. While it is possible that other EGs may exist that require even longer celooligosaccharide substrates to achieve maximum hydrolytic activity it is noteworthy that the *A. niger* EG employed in this study was previously found to be the most recalcitrant of a series of 5 EGs from various sources towards the hydrolysis of short-chain celooligosaccharides [13].

Comparison of CELLG5 reagent with CELLG3 reagent

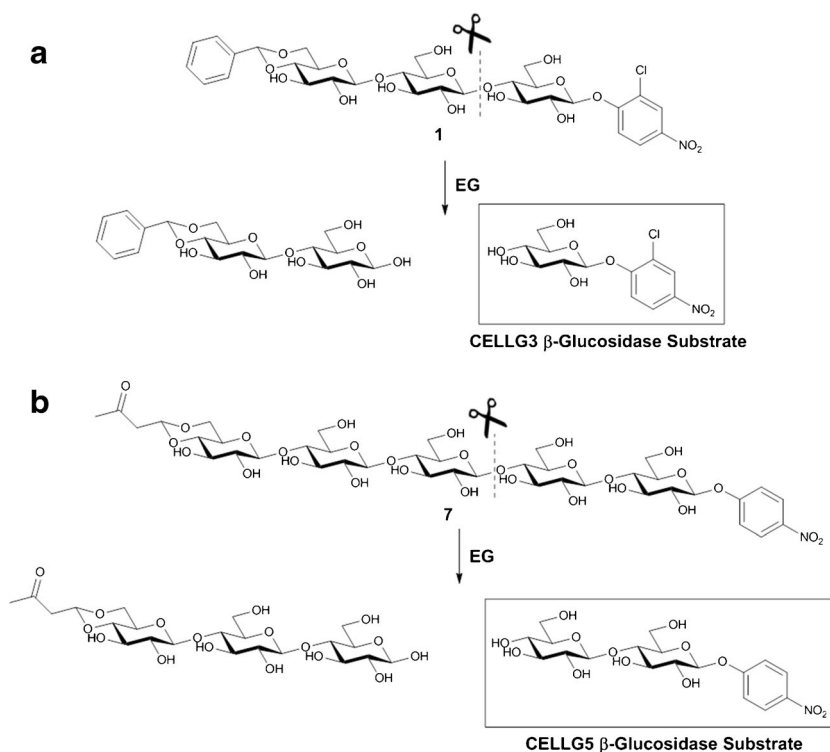
Substrate solubility

The exchange of the benzylidene acetal that was employed with CELLG3 for the 3-ketobutylidene acetal in CELLG5 allowed a reduction in the DMSO co-solvent required to fully solubilise the reagent. Figure 6 shows the effect of varying the DMSO content in the reagent solution from 5–30 % *v/v*, an experiment that would not have been possible with CELLG3. It is evident that DMSO inhibits the hydrolytic activity of *A. niger* EG significantly with a 50 % increase in hydrolysis observed when the incubation is conducted in 5 % *v/v* DMSO as opposed to 30 % *v/v* DMSO. The same experiment was performed using *T. longibrachiatum* EG and no inhibitory effect from DMSO was observed (data not shown).

Colorimetric moiety

The use of NP over CNP as a chromophore in these applications is beneficial for a number of reasons. The extinction coefficient of NP ($18.1 \times 10^3 \text{ L mol}^{-1} \text{ cm}^{-1}$) is ~10 % higher than that of CNP ($16.6 \times 10^3 \text{ L mol}^{-1} \text{ cm}^{-1}$) which produces a corresponding increase in sensitivity at equimolar concentrations. NP functionalised substrates are also expected to exhibit improved thermal and alkaline stability over CNP analogues owing to the difference in the pK_a of their chromophores (CNP = 5.45, NP = 7.18). CNP was employed as the chromophore in the CELLG3 substrate over NP for two major reasons: (a) It's relatively low pK_a provided for the possibility of performing kinetic assays of EG and (b) the increased leaving group ability of the chromophore accelerated the β -glucosidase mediated hydrolysis of the 2-chloro-4-nitrophenol- β -D-glucopyranoside that was formed as an intermediate in the assay reaction (Fig. 7a) therefore allowing a reduction in the quantity of β -glucosidase that was required to

Fig. 7 Proposed hydrolysis points within CELLG3 and CELLG5 substrates generating alternative β -glucosidase substrates



achieve maximum sensitivity. It was hypothesised that the latter benefit would not apply in the case of CELLG5 as many EGs would preferentially cleave between the second and third glucopyranosyl residues from the reducing end (Fig. 7b), thereby releasing 4-nitrophenyl- β -D-cellobioside as an intermediate. The rate-determining step in the hydrolysis of 4-nitrophenyl- β -D-cellobioside by β -glucosidase is the cleavage of the non-reducing end β -D-glucopyranosyl residue and so there would be no advantage in increasing the lability of the chromophore in this case. Given that the ability to perform kinetic assays for some EGs could be considered a niche application, it was decided that the overall advantages associated with the use of NP outweighed this.

Substrate stability

Figure 8 demonstrates the improved thermal and alkaline stability afforded to CELLG5 over CELLG3 in replacement of the CNP chromophore with NP. While the thermal stability observed for compound **1** is sufficient for the vast majority of applications (the absorbance increase observed following a 10-min incubation at 90 °C corresponds to substrate hydrolysis of <5%), its alkaline lability is a potential issue. There is a growing body of EGs reported in the literature with alkaline pH optima [24–28]. Assays of these EGs need to be stopped by the addition of strongly alkaline buffers as these enzymes can exhibit significant activity above pH 11. A stop solution

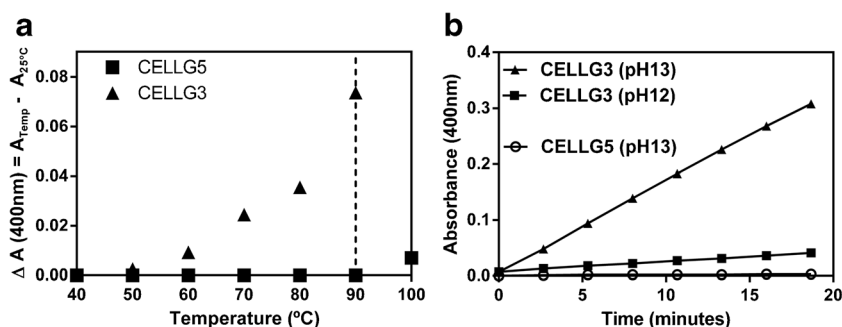


Fig. 8 Spontaneous hydrolysis of CELLG3 and CELLG5 substrates as observed by absorbance increase at 400 nm under **a** various temperature conditions: 10 min incubations of assay reagent (0.1 mL) with buffer (0.1 mL, 100 mM sodium acetate) at 40, 50, 60, 70, 80, 90 and 100 °C

stopped by the addition of Tris buffer solution (0.1 mL, pH 9) and **b** various pH conditions: 20 min incubations of assay reagent (0.1 mL), buffer (0.1 mL, 100 mM sodium acetate, pH 4.5) and sodium carbonate buffer solution (0.1 mL, 100 mM, pH 12 and 13) at 40 °C

Table 1 Reproducibility and repeatability study on CELLG5 assay using a standard *T. longibrachiatum* EG solution

<i>Trichoderma longibrachiatum</i> EG	5.8 mU/assay on CMC-4M Δ Abs (400 nm)	8.6 mU/assay on CMC-4M Δ Abs (400 nm)	17.2 mU/assay on CMC-4M Δ Abs (400 nm)
Day 1 ^a	0.320	0.471	0.925
Day 2 ^a	0.324	0.477	0.925
Day 1 ^b	0.305	0.464	0.910
Day 2 ^b	0.308	0.458	0.883
Standard dev. (σ)	0.009	0.008	0.020
%CV	2.96	1.75	2.17

^a Analyst 1^b Analyst 2

with pH > 12 for example would clearly be unsuitable for use with CNP containing substrates such as CELLG3 as spontaneous hydrolysis occurs readily under these conditions as can be seen from Fig. 8b. This spontaneous hydrolysis would lead to an increased absorbance at 400 nm and therefore an overestimation of EG activity. No absorbance increase was detected upon incubation of the CELLG5 reagent under all pH conditions investigated and the minimal hydrolysis that is observed following incubation at 100 °C for 10 min is irrelevant given that the maximum possible assay temperature is dictated by the thermostability limit of the ancillary β -glucosidase (90 °C).

The long-term stability of the CELLG5 reagent was also assessed at various temperatures. Solutions maintained at -20 and 4 °C for 3 months prior to their assay using a *T. longibrachiatum* EG standard solution behaved exactly the same as freshly prepared CELLG5 reagent while a solution kept at 25 °C lost efficacy after 2 weeks, presumably due to the loss of the ancillary β -glucosidase activity.

Reproducibility and repeatability of CELLG5 assay

The repeatability and reproducibility of the assay was determined by having two analysts perform a series of assays on

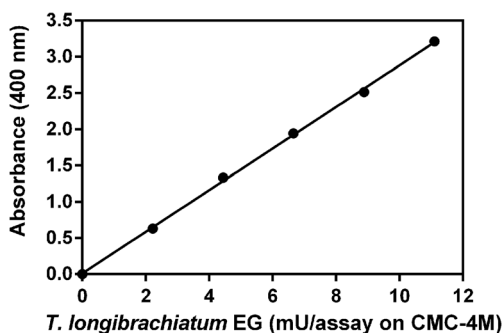


Fig. 9 Standard curve relating absorbance increase at 400 nm observed with CELLG5 reagent under Chemwell®-T assay format (Automated CELLG5 assay Section) to *T. longibrachiatum* EG activity on CMC-4M at 37 °C in pH 4.5 100 mM sodium acetate

three different samples ranging in activity from 55–164 mU/mL over two consecutive days and the results are outlined in Table 1. Ten replicates were used to determine the standard deviation of the blank sample solution absorbance ($\sigma = 0.002$).

The limit of detection (LOD) was calculated as 3.5×10^{-4} U/mL ($3 \times \sigma$, which corresponds to an absorbance of 0.007) and the limit of quantification (LOQ) was calculated as 4.1×10^{-3} U/mL ($10 \times \sigma$ of the blank sample solution absorbance, which corresponds to an absorbance of 0.023).

CELLG5 automated assay format

As stated earlier, one of the major advantages of the enzyme-coupled assay format described here over traditional assay methods is the ability to perform high-throughput automated assays using autoanalyser systems. The CELLG5 reagent is readily adapted to this application by varying slightly the ratios of CELLG5 reagent, analyte sample size and stop solution as described in “Automated CELLG5 assay” section. Figure 9 shows the standard curve for the automated analysis of *T. longibrachiatum* cellulase on a Chemwell®-T system. This provides a platform for high-throughput analysis with only 25 μ L of CELLG5 reagent required per assay, increasing the number of assays that can be performed by a factor of 4 over the manual assay format.

Conclusions

A novel substrate, namely 4,6-*O*-(3-ketobutylidene)-4-nitrophenyl- β -D-cellopentaoside (7), has been synthesised and combined with a thermostable β -glucosidase in a coupled enzyme assay format for the measurement of EG activity. This reagent, termed CELLG5, displays marked advances on its forerunner, CELLG3, which contained 4,6-*O*-benzylidene-2-chloro-4-nitrophenyl- β -D-cellotriside (1). It has been shown to be more generally applicable to a wide range of EGs from various sources and to be more stable to high temperature and high pH conditions. Its higher water solubility allows for a

reduction in the quantity of DMSO needed for complete dissolution which assists in curtailing any inhibitory effects caused by the co-solvent. A reproducibility/repeatability study has been performed and the assay shown to be extremely robust and also highly sensitive with impressive LOD (<0.5 mU/mL) and LOQ (<5 mU/mL) values. An automated version of the assay has also been developed for high-throughput applications.

Given the importance of EG as an industrial biocatalyst in a wide range of industries, there is a growing global need for novel EGs offering improved activity and stability. The directed evolution projects needed to unlock improved mutant enzymes rely heavily on high-throughput solution-based screening assays. The lack of a rapid, specific, automatable assay for this enzyme has restrained research and development in this area over the past number of decades. It is the opinion of the authors that this assay will find widespread use both in academia and industry.

Compliance with ethical standards

Conflict of Interest All authors were full time employees of Megazyme International throughout this research project. K-CELLG5 and K-CELLG3 are now commercially available assay kits for the measurement of *endo*-1,4- β -glucanase (*endo*-cellulase) activity.

References

- Gusakov AV, Berlin AG, Popova NN, et al. A comparative study of different cellulase preparations in the enzymatic treatment of cotton fabrics. *Appl Biochem Biotechnol*. 2000;88:119–26.
- Maurer KH. Development of new cellulases. In: Van Ee JH, Misset O, editors. *Enzymes in detergency*. New York: Marcel Dekker; 1997. p. 175–202.
- Singh A, Kuhad RC, Ward OP. Industrial application of microbial cellulases. In: Kuhad RC, Singh A, editors. *Lignocellulose biotechnology: future prospects*. New Delhi: I. K. International; 2007. p. 345–58.
- Buchert J, Suurnakki A, Tenkanen M, et al. Enzymatic characterization of pulps. In: Jeffries TW, Viikari L, editors. *Enzymes for pulp and paper processing*. Washington: ACS Chemical Society; 1996. p. 38–43.
- Campbell GL, Bedford MR. Enzyme applications for monogastric feeds: a review. *Can J Anim Sci*. 1992;72:449–66.
- Maki M, Leung KT, Qin W. The prospects of cellulase-producing bacteria for the bioconversion of lignocellulosic biomass. *Int J Biol Sci*. 2009;5(5):500–16.
- Bamforth CW. Current perspectives on the role of enzymes in brewing. *J Cereal Sci*. 2009;50(3):353–7.
- Oksanen J, Ahvenainen J, Home S. Microbial cellulase for improving filterability of wort and beer. In: Wijngaarden MV, editor. *Proceedings of the 20th European Brewery chemistry congress*. Oxford: Oxford University Press; 1985. p. 419–25.
- Nelson N. A photometric adaptation of the Somogyi method for the determination of glucose. *J Biol Chem*. 1944;153:375–80.
- Somogyi M. Notes on sugar determination. *J Biol Chem*. 1952;195:19–23.
- Manning K. Improved viscometric assay for cellulase. *J Biochem Biophys Methods*. 1981;5(4):189–202.
- McCleary BV. New chromogenic substrates for the assay of alpha-amylase and (1–4)- β -D-glucanase. *Carbohydr Res*. 1980;86:97–104.
- McCleary BV, McKie V, Draga A. Cellulases. In: Gilbert H, editor. *Methods in enzymology*. Cambridge: Academic; 2012. p. 1–17.
- Bhat KM, Hay AJ, Claeysens M, et al. Study of the mode of action and site-specificity of the *endo*-(1–4)-beta-D-glucanases of the fungus *Penicillium pinophilum* with normal, 1-³H-labelled, reduced and chromogenic cello-oligosaccharides. *Biochem J*. 1990;266:371–8.
- Claeysens M, Aerts G. Characterisation of cellulolytic activities in commercial *Trichoderma reesei* preparations: an approach using small, chromogenic substrates. *Bioresour Technol*. 1992;39:143–6.
- Rahman MM, Bhuiyan SH, Nirasawa S, et al. Characterisation of an *endo*- β -1,4-glucanase of *Thermotoga maritima* expressed in *Escherichia coli*. *J Appl Glycosci*. 2002;49:487–95.
- Claeysens M, Henrissat B. Specificity mapping of cellulolytic enzymes: classification into families of structurally related proteins confirmed by biochemical analysis. *Protein Sci*. 1992;1:1293–7.
- McCleary BV, Mangan D, Daly R, et al. Novel substrates for the measurement of *endo*-1,4- β -glucanase (*endo*-cellulase). *Carbohydr Res*. 2014;385:9–17.
- Mangan D, McCleary BV, Liadova A, et al. Quantitative fluorometric assay for the measurement of *endo*-1,4- β -glucanase. *Carbohydr Res*. 2014;395:47–51.
- Planas A, Abel M, Millet Ó, et al. Synthesis of aryl 3-*O*-beta-cellobiosyl-beta-D-glucopyranosides for reactivity studies of 1,3-1,4-beta-glucanases. *Carbohydr Res*. 1998;310:53–64.
- Teshima S, Hayashi Y, Emi S, et al. Determination of alpha-amylase using a new blocked substrate (3-ketobutylidene beta-2-chloro-4-nitrophenyl-maltopentaoside). *Clin Chim Acta*. 1991;199(1):23–31.
- Ishimaru K, Kamezono Y, Teshima S, et al. Enzymatic synthesis of 2-chloro-4-nitrophenyl 4,6-*O*-3-ketobutylidene beta-maltopentaoside, a substrate for alpha-amylase. *Biosci Biotechnol Biochem*. 1992;56(10):1552–6.
- Ishimaru K, Kamezono Y, Hanayama N. New method for preparing 3-ketobutylidene 2-chloro-4-nitrophenyl β -maltopentaoside. *Biosci Biotechnol Biochem*. 1992;56(7):1136–7.
- Vega K, Villena GK, Sarmiento VH, et al. Production of alkaline cellulase by fungi isolated from an undisturbed rain forest of Peru. *Biotechnol Res Int*. 2012. doi:10.1155/2012/934325
- Ito S. Alkaline cellulases from alkaliphilic *Bacillus*: enzymatic properties, genetics, and application to detergents. *Extremophiles*. 1997;1(2):61–6.
- Deka D, Jawed M, Goyal A. Purification and characterization of an alkaline cellulase produced by *Bacillus subtilis* (AS3). *Prep Biochem Biotechnol*. 2013;43(3):256–70.
- Shirai T, Ishida H, Noda J, et al. Crystal structure of alkaline cellulase K: insight into the alkaline adaptation of an industrial enzyme. *J Mol Biol*. 2001;310(5):1079–87.
- Hakamada Y, Koike K, Yoshimatsu T, et al. Thermostable alkaline cellulase from an alkaliphilic isolate. *Bacillus sp.* KSM-S237. *Extremophiles*. 1997;1(3):151–6.