



Associations between C-reactive protein and white blood cell count, occurrence of delayed cerebral ischemia and poor outcome following aneurysmal subarachnoid hemorrhage: a systematic review and meta-analysis

Xinlong Ma¹ · Feng Lan² · Yuqi Zhang¹

Received: 20 August 2020 / Accepted: 7 September 2020 / Published online: 9 January 2021
© Belgian Neurological Society 2021

Abstract

This review and meta-analysis investigated associations of systemic inflammatory marker C-reactive protein (CRP) and white blood cell count (WBC) with occurrence of delayed cerebral ischemia (DCI) and poor functional outcome after aneurysmal subarachnoid hemorrhage (aSAH). Pubmed, EMBASE, and CENTRAL databases were searched until November 30, 2019, selecting prospective and retrospective studies of patients with spontaneous SAH due to ruptured aneurysm. Outcome measures were occurrence of DCI, defined as new focal neurological deficit or a deterioration of consciousness; and/or a new infarct on computed tomography or magnetic resonance imaging that was not visible initially. Occurrence of poor functional outcome at follow-up were measured by modified Rankin Scale or Glasgow outcomes scale. Fifteen studies analyzing data of 3268 patients with aSAH were included. Meta-analysis revealed early increase in CRP was significantly associated with higher risk of occurrence of DCI (pooled OR 1.30, 95% CI 1.10–1.54; $P=0.002$), whereas not with poor functional outcome (pooled OR 1.02, 95% CI 1.00–1.04, $P=0.052$). No significant associations between early increase in WBC and DCI (pooled OR 1.13, 95% CI 0.95–1.34; $P=0.179$) were observed, whereas increase in WBC was significantly associated with increased risk of poor functional outcome (pooled OR 1.17, 95% CI 1.07–1.28, $P=0.001$). Early increase in blood CRP appears to correlate with DCI after SAH, while increase in WBC correlates with poor functional outcome. However, strong conclusion cannot be made due to the small study number, between-study heterogeneity and suspicion of uncontrolled factors. Whether early phase CRP and WBC may serve as prognostic markers for aSAH needs more investigation.

Keywords Aneurysmal subarachnoid hemorrhage · Biomarker · C-reactive protein · Delayed cerebral ischemia · White blood cell count

Xinlong Ma and Feng Lan contributed equally to the work.

Electronic supplementary material The online version of this article (<https://doi.org/10.1007/s13760-020-01496-y>) contains supplementary material, which is available to authorized users.

✉ Yuqi Zhang
Yuqi9597@sina.com

¹ Department of Neurosurgery, Yuquan Hospital, Tsinghua University, No. 5 Shijingshan Road, Shijingshan District, Beijing 100049, China

² Pediatric Intensive Care Unit, The First Affiliated Hospital of Xinjiang Medical University, Ürümqi, China

Introduction

Subarachnoid hemorrhage (SAH) is a prominent cause of morbidity and mortality worldwide, with overall incidence reported to be about 9 per 100,000 person-years [1] and mortality estimated to be about 35% [2]. In about 85% of cases, the underlying cause is ruptured intracranial aneurysm, which is associated with poorer outcomes than non-aneurysmal cases (perimesencephalic and various other types) [3]. Development of aSAH is shown to peak in middle-aged and older adults, particularly between the ages of 50 and 60 years, and is 1–6 times more common among older adult women than men [1].

Although clinical decline after aSAH may arise from etiologies such as hydrocephalus, rebleeding, metabolic

disturbances or infection [4], delayed cerebral ischemia (DCI) is a frequent cause of poor neurological outcomes and death in patients who survive the initial bleeding of aSAH [5]. DCI also may progress to cerebral infarction, resulting in severe disability or death in about 50% of SAH patients, and is deemed the most important adverse prognostic factor for poor outcome of aSAH [6]. Patients who develop DCI, may manifest unifocal or multifocal areas of ischemia, typically between days 4 and 14 after the initial hemorrhage, and not restricted to the arterial supply or borderzone areas [4]. Although vasospasm figures prominently in DCI development, the pathogenesis is believed to be multifactorial [7, 8].

The currently accepted predictive factors for long-term neurologic outcomes after SAH, especially DCI and poor functional outcomes, include age and clinical severity [9, 10]. A review study investigating hemostatic or fibrinolytic parameters that may predict DCI also reported that levels of von Willebrand factor and platelet activating factor were higher in SAH patients with DCI than in those without DCI [4]. Recent evidence of serum parameters that serve as biomarkers for predicting SAH outcomes suggests that various inflammatory, fibrinolytic and hematologic factors may be associated with poor outcomes after SAH, including elevated glucose level [11], low platelet count [12], elevated CRP [13–15], and white blood cell (WBC) count [15, 16].

Having a biomarker which is convenient to obtain in assessing patients' individual risk for poor outcome after aSAH would have tremendous clinical value. Among the potential biomarkers, CRP and WBC are markers of systemic inflammation which are routinely collected on admission have drawn much attention of research. However, the relationships between these parameters at early phase of admission and the occurrence of DCI and poor outcome at follow-up remains ambiguous, and no meta-analysis has yet estimated them. To investigate whether these parameters may aid in identifying patients at high risk of poor prognosis, and to ultimately improve patient monitoring and individualize care, we conducted this systematic review and meta-analysis to determine the relationships between peripheral CRP, WBC, and the occurrence of DCI and poor functional outcome following aSAH.

Materials and methods

The present systematic review and meta-analysis was conducted in accordance with the Preferred Reporting Items for Systematic Reviews and Meta-Analyses (PRISMA) guidelines. Pubmed, EMBASE, and CENTRAL databases were searched until November 30, 2019 using the following keywords and word combinations to maximize search results:

(((((C-reactive protein [MeSH Terms]) OR white blood cell [MeSH Terms]) OR ((biomarkers [MeSH Terms]) OR

predictor)) OR inflammation [MeSH Terms])) AND subarachnoid hemorrhage [MeSH Terms]

The search filters applied were: Abstract available; Humans. Reference lists of relevant studies were also hand-searched for additional eligible studies.

Selection criteria and data extraction

Prospective and retrospective studies were selected that met the following inclusion criteria: (1) adults age > 18 years with spontaneous SAH due to ruptured aneurysm, diagnosed by computed tomography angiogram (CTA) or digital subtraction angiography (DSA); (2) reporting adjusted odds ratios (controlling for baseline characteristics such as age, sex, clinical grades of severity at admission, and/or other known predictors) for the associations between the occurrence of delayed cerebral ischemia (DCI) or poor functional outcome and blood CRP/WBC collected either on admission or at the early phase of admission as part of the routine clinical workup. Studies of patients with traumatic SAH or SAH due to other secondary causes were excluded; those focused only on results of cerebrospinal fluid (CSF) CRP or WBC and did not provide data of peripheral CRP/WBC, non-human studies, letters, commentaries, reviews, editorials, case reports, proceedings and personal communications; and studies with no quantitative outcomes of interest were excluded. Studies were identified by the above search strategy by two independent reviewers (XM and FL). Where uncertainty existed regarding eligibility, a third reviewer (YZ) was consulted.

Main outcome measures

Outcome measures included the occurrence of DCI and poor functional outcome. DCI was defined as a new onset of focal neurological deficit or a deterioration of consciousness (delayed ischemic neurologic deficit, DIND); and/or a new infarct on CT or magnetic resonance (MR) imaging that was not visible initially and was attributed to cerebral vasospasm (delayed cerebral infarction). Functional outcomes were graded by modified Rankin Scale (mRS) or Glasgow outcomes scale (GOS). Poor functional outcomes were defined as mRS 3 or 4 to 6, or GOS 1–3 from discharge to 1-year follow-up.

The following data were extracted from each included study: author, year of publication, study design, patient number, sex and mean age of subjects, time from ictus to admission, time from ictus to sampling, procedures performed, clinical severity (i.e., Hunt and Hess scale; WFNS scale) and radiological severity (i.e., Fisher grade) on admission, criteria used for poor outcome, exclusion criteria, time point of outcome evaluation, and factors adjusted in the associations analyzed. Of note, if multiple

analyses on CRP/WBC collected at different time point were reported in the same study, the earliest timeframe was selected for the meta-analysis (Fig. 1).

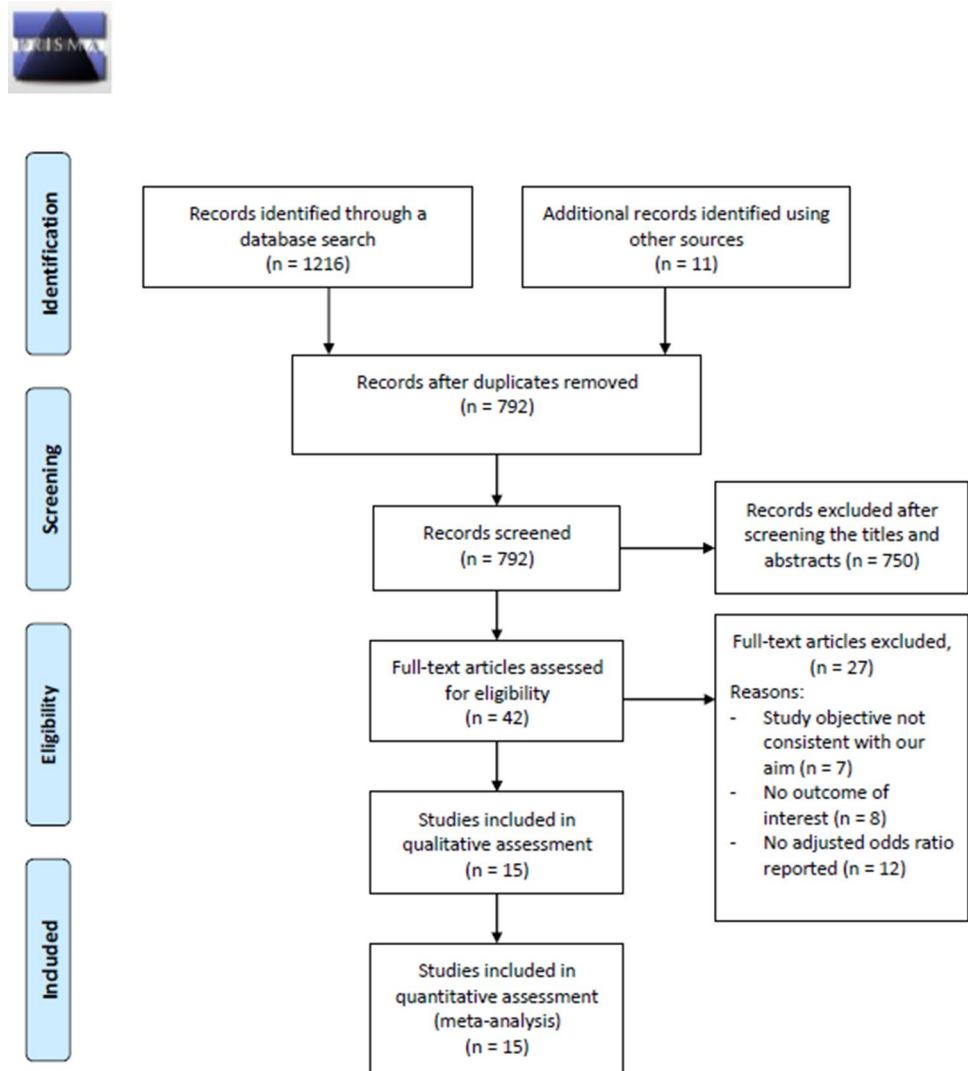
Quality assessment

We assessed the quality of included studies using the Newcastle–Ottawa scale (NOS) for cohort studies as recommended by the Cochrane Non-Randomized Studies Methods Working Group [17]. This scale awards a maximum of nine stars to each study: four stars for the adequate selection of cohort participants, two stars for comparability of cohort participants on the basis of the design and analysis, and three stars for the adequate ascertainment of outcomes. Quality assessment was performed by two independent reviewers (XM and FL), and a third reviewer (YZ) was consulted if any uncertainties occurred.

Statistical analysis

To investigate associations of early increase in CRP and WBC with the occurrence of DCI and poor functional outcome following aSAH, odds ratios (OR) with 95% confidence intervals (CI) were extracted from the included studies. An χ^2 -based test of homogeneity was performed using Cochran's Q statistic and I^2 . I^2 illustrates the percentage of total variability in effect estimates among trials that is due to heterogeneity rather than chance. A rough guide to interpretation of I^2 in the context of meta-analyses is as follows: (1) 0–40%: may not be important; (2) 30–60%: may represent moderate heterogeneity; (3) 50–90%: may represent substantial heterogeneity; (4) 75–100%: considerable heterogeneity [18]. In addition, a random-effects model was applied. Pooled effects were calculated and a two-sided P value < 0.05 was established as statistical significance. Sensitivity analysis was carried out using the leave-one-out approach. Publication bias analysis was not

Fig. 1 PRISMA flow diagram



evaluated, because the number of studies was less than ten studies, too few to detect an asymmetric funnel [19]. All analyses were performed using Comprehensive Meta-Analysis statistical software, version 2.0 (Biostat, Englewood, NJ, USA).

Results

Among 42 eligible studies that underwent full-text review, 27 were excluded and 15 (5 retrospective, 10 prospective) that met the eligibility criteria were included [13–16, 20–30]. Characteristics of the included studies are summarized in Table 1. Overall, the 15 eligible studies analyzed the data of 3268 patients with aSAH. Patients' median age was 53 years (range 48–57 years) and the percentage of older adult males ranged from 24 to 56%. Time from ictus to admission was within 24–96 h. Procedures performed, clinical and radiological severity are also summarized in Table 1. Parameters studied, timeframe on sampling, outcome definitions, exclusion criteria and factors adjusted among the included studies are summarized in Table 2. Among the studies included, 11 studies assessed the parameters of interest by initial blood sampling at presentation. 2 studies were based on blood samples collected on postoperative days 1–2, and 2 studies used blood samples collected during the first 14 days of admission. Clinical grade at presentation and patients' age were the most frequently adjusted factors (for clinical grade: 11 studies; for age: 8 studies) (Tables 1, 2).

Meta-analyses

Delayed cerebral ischemia

Five studies [13, 16, 20, 23, 24] provided adjusted ORs and were included in the meta-analysis to determine associations between early increase in CRP and the occurrence of DCI following aSAH. Substantial heterogeneity was found across the five studies (Q statistic = 11.428, $I^2 = 64.997\%$, $P = 0.022$). Early increase in CRP was significantly associated with higher risk of the occurrence of DCI (pooled OR 1.30, 95% CI 1.10–1.54; $P = 0.002$) (Fig. 2a).

Only four studies [16, 24, 26, 27] provided enough data of peripheral WBC and were included in the meta-analysis to determine the associations between early elevated WBC and occurrence of DCI. Substantial heterogeneity was found among the four studies (Q statistic = 13.691, $I^2 = 78.089\%$, $P = 0.003$). Meta-analysis revealed there was no significant associations between increase in WBC and occurrence of DCI (pooled OR 1.13, 95% CI 0.95–1.34; $P = 0.179$) (Fig. 2b).

Poor functional outcomes

The criteria used for defining poor functional outcomes are summarized in Table 2. Nine out of 15 studies were included in the meta-analysis to determine associations between increase in peripheral CRP and poor functional outcomes after aSAH. Early increase in CRP was not significantly associated with poor functional outcome (pooled OR 1.02, 95% CI 1.00–1.04, $P = 0.052$; heterogeneity: Q statistic = 24.571, $I^2 = 71.511\%$, $P = 0.001$) (Fig. 3a).

Results of meta-analysis of seven studies showed a significant association between early increase in WBC and increased risk of poor outcome (pooled OR 1.17, 95% CI 1.07–1.28, $P = 0.001$) with moderate heterogeneity among studies (heterogeneity: Q statistic = 13.864, $I^2 = 56.724\%$, $P = 0.031$) (Fig. 3b).

Sensitivity analysis and publication bias

Sensitivity analyses were performed using the leave-one-out approach in which the meta-analysis is performed with each study removed in turn (Table 3). The direction of combined estimates did not vary markedly with the removal of the studies, indicating that the meta-analysis was robust and the data were not overly influenced by any single study, only except for Sokół et al. [15] and Turner et al. [22] for CRP level associated with poor outcomes. After removing Sokół et al. [15] and Turner et al. [22], the results changed to significant.

Because of the small number of studies, the power of the tests for publication bias were too low to distinguish chance from real asymmetry.

Quality assessment

The result of quality assessment of included studies is shown in Supplementary Table 1. The total score ranged from 6 to 9 and the average score was 8, suggesting that the studies included were of good quality (Supplementary Table 1).

Discussion

In the present review and meta-analysis, we assessed the associations between DCI/poor functional outcome following aSAH and blood CRP/WBC. These two parameters were selected for meta-analysis, because they were the most consistently assessed inflammatory markers in relation to aSAH prognosis in the literature. The results show increase in baseline CRP was significantly associated with increased risk of DCI following aSAH, but not with

Table 1 Characteristics of studies included in this review and meta-analysis

First author (year)	Study design	No. of patients	Age (years)	Male (%)	Procedure performed (%)	Clinical severity on admission		Radiological severity on admission ^a	Time from ictus to admission
						Hunt and Hess	WFNS		
Al-Mufti (2019)	Prospective	849	> 53: 55%	27	Clipping: 69%		3–5: 47%		< 24 h
Wu (2019)	Retrospective	122	55.3	39	NA	4–5: 19.7%		3–4: 89.3%	< 72 h
Sokół (2018)	Prospective	116	54.3	45	Coiling: 100%	1–3: 52.5% 4–5: 47.5%	4b		< 24 h
Frontera (2017)	Prospective	50	55 ^b	41	None: 25% Clipping: 15% Coiling: 56% Both: 1%	1–3: 77% 4–5: 23%			< 72 h
Siegler (2017)	Retrospective	179	54 ^b	24	Clipping: 26.8% Coiling: 67% Other/None: 6.1%	4–5: 25%		3–4: 80%	NA
Tao (2017)	Prospective	247	55.9	36	Clipping: 80.2% Coiling: 19.8%		2 ^b	3 ^b	< 24 h
Chugh (2015)	Retrospective	40	52.8	25	Clipping: 30% Coiling: 63%	4–5: 30%		3: 100%	< 24 h
Csajbok (2015)	Prospective	98	57 ^b	24	Coiling: 100%		1: 34.7% 2: 30.6% 3: 3.1% 4: 20.4% 5: 11.2%	2: 3.1% 3: 31.6% 4: 65.3%	< 24 h
Turner (2015)	Prospective	803	50	31	NA		1: 49% 2: 25% 3: 4% 4: 13% 5: 10%	1: 2% 2: 14% 3: 33% 4: 51%	< 96 h
Romero (2014)	Prospective	100	48	56	Clipping: 57% Coiling: 43%		2.5	1.5	< 24 h
McMahon (2013)	Prospective	149	50 ^b	33	Clipping: 10% Coiling: 86% Conservative: 3%		1: 67% 2: 21% 3: 6% 4: 3% 5: 3%	1: 5% 2: 26% 3: 52% 4: 18%	NA
Muroi (2013)	Prospective	138	54.4	34	Clipping: 57% Coiling: 43%		1–3: 66% 4–5: 34%	1–2: 16% 3: 61% 4: 23%	< 36 h
Jeon (2012)	Retrospective	93	NA	35	Clipping: 21.5% Coiling: 78.5%	1–2: 66.7% 3–4: 33.3%		2, 4: 60.2% 3: 39.8%	NA
Juvela (2012)	Prospective	178	50.3	49	Clipping: 97% Coiling: 3%		1: 54% 2–3: 25% 4–5: 21%	1–2, 4: 33% 3: 67%	< 48 h
Kasius (2009)	Retrospective	106	NA	33	Clipping: 71.7% Coiling: 12.3%		1: 41.5% 2: 29.2% 3: 5.7% 4: 16.9% 5: 6.6%		< 72 h

WFNS World Federation of Neurosurgical Societies, NA not applicable

^aFisher grade

^bData displayed as median

poor functional outcome at follow-up. Increase in baseline WBC was not associated with DCI, however, were significantly associated with poor functional outcome.

Prediction of the occurrence of DCI and poor outcome is of critical value for aSAH management. It is known that the need for special laboratory test or collection of CSF

Table 2 Parameters studied, timeframe on sampling, outcome definitions, and factors adjusted

First author (year)	Inflammatory parameters studied	Time from ictus to sampling	Exclusion criteria	Poor outcome		Factors adjusted in multivariate analysis
				Criteria used	Time point of evaluation	
Al-Mufti (2019)	WBC, RDW, NLR, NC, LC, PLT, % neutrophil, % lymphocyte	< 72 h (on admission)	NA	NA	NA	WFNS, APACHE-II, thick SAH on admission CT, smoking status, clipping repair
Wu (2019)	WBC, NC, LC, NLR	< 72 h (on admission)	Traumatic SAH, recent infectious diseases, prior neurological conditions including ischemic and hemorrhagic stroke, or brain trauma	NA	NA	Age, sex, Hunt and Hess, hydrocephalus, hypertension
Sokół (2018)	WBC, CRP	< 72 h (on admission)	Infection within 2 weeks before admission, nosocomial infection with the first week after admission, e.g., ventilator-associated pneumonia, chronic neurological disease, active chronic inflammatory disease, recurrent SAH, pregnancy	GOS 1	3 months	Age, Hunt and Hess
Frontera (2017)	CRP, %Neutrophil, Platelet activation	< 72 h (on admission)	Secondary SAH, ultra-early vasospasm or DCI, use of irreversible platelet inhibitors within 7 days or reversible platelet inhibitors within 4 half-lives of the first blood draw, intrinsic platelet dysfunction, thrombocytopenia, platelet transfusion, use of immunosuppressant drugs, known immunocompromised state	mRS 4–6	3 months	NA
Siegler (2017)	WBC, RDW, PLT	Early phase (days 1–14 mean)	Traumatic SAH, ischemic or hemorrhagic stroke, vascular malformation, coagulopathy or other secondary causes, as with perimesencephalic SAH	mRS 4–6	At discharge	Age, sex, race, high Hunt and Hess, prior coronary artery disease, clipping, cerebral infarction, VTE

Table 2 (continued)

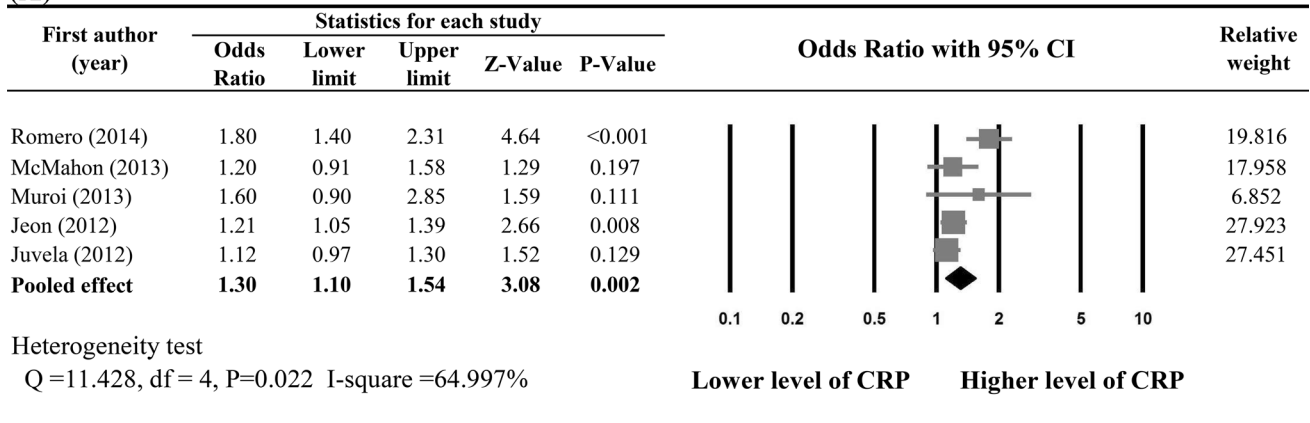
First author (year)	Inflammatory parameters studied	Time from ictus to sampling	Exclusion criteria	Poor outcome		Factors adjusted in multivariate analysis
				Criteria used	Time point of evaluation	
Tao (2017)	WBC, NC, LC, NLR, PLR	< 24 h (on admission)	Acute or chronic infection, history of autoimmune disease, previous stroke and recent cardiocerebrovascular disease, previous use of anticoagulant /anti-platelet medication, other prior systemic disease including malignancy, uremia, liver cirrhosis, chronic heart or lung disease	mRS 3–6	3 months	Intracerebral hemorrhage, hydrocephalus, admission glucose level
Chugh (2015)	CRP, WBC, RDW, PLT, fibrinogen, ESR,	< 24 h (on admission)	Antecedent head trauma, ischemic or hemorrhagic stroke, vascular malformation, or other secondary causes, perimesencephalic SAH	mRS 3–6	3 months	Age, Hunt&Hess, CBC and blood biomarkers
Csajbok (2015)	CRP	< 48 h (on admission)	NA	GOSE 1–4	1 year	Age, sex, infectious status during observation, WFNS, Fisher
Turner (2015)	CRP, WBC	< 96 h (on admission)	Taking statin, pregnancy, no reasonable prospect of survival, renal or hepatic impairment, not fully independent before bleed, strong suspicion of drug or alcohol misuse, unlikely to be amenable to follow-up, taking warfarin-type drugs or contraindicated medications, suspected additional life-threatening disease	mRS 3–6	At discharge	Age, race, WFNS, Fisher, statin, infection and sepsis
Romero (2014)	CRP	< 24 h (on admission)	Concomitant or recent acute myocardial infarction, surgery within last 30 days, clinical or laboratory evidence of chronic systemic infection or acute infection	NA	NA	Hunt and Hess, Fisher grade, number of aneurysms, hemodynamic changes in Transcranial Doppler
McMahon (2013)	CRP, WBC, IL-6	On admission	NA	NA	NA	Age, sex
Muroi (2013)	CRP, WBC, Procalcitonin	Early phase (days 1–14)	Uncertain time of ictus, death within 3 days after admission, conservative or delayed aneurysm treatment	GOS 1–3	3 months	Infection, hypothermia, WFNS

Table 2 (continued)

First author (year)	Inflammatory parameters studied	Time from ictus to sampling	Exclusion criteria	Poor outcome		Factors adjusted in multivariate analysis
				Criteria used	Time point of evaluation	
Jeon (2012)	CRP	Postoperative days 1–2	Prior clipping or coiling in other hospitals, overt or suspicious acute infection from admission until 7 days after surgery, chronic inflammatory diseases, chronic neurological diseases, or surgery of any kind within the last 4 weeks before admission	mRS 4–6	At discharge	Ventilation, infarction, hydrocephalus, surgical decompression
Juvela (2012)	CRP	< 48 h (postoperative day 1)	Died before or soon after hospital admission, space-occupying ICH	GOS 1–3	3 months	Age, intraventricular bleeding, WFNS
Kasius (2009)	CRP, WBC, PLT, ESR	< 72 h (on admission)	Death on admission, DCI developed before admission	mRS 4–6	3 months	Infection, loss of consciousness at ictus, admission WFNS, amount of ventricular blood, signs of acute ischemia at ictus

CRP C-reactive protein, WBC white blood cell count, NC neutrophil count, LC lymphocyte count, NLR neutrophil-to-lymphocyte ratio, PLR platelet-to-lymphocyte ratio, PLT platelet count, ESR erythrocyte sedimentation rate, RDW red blood cell distribution width, DCI delayed cerebral ischemia, mRS modified Rankin Scale, GOS Glasgow outcome scale, GOSE extended Glasgow outcome scale, WFNS World Federation of Neurosurgical Societies, NA not applicable

(A)



(B)

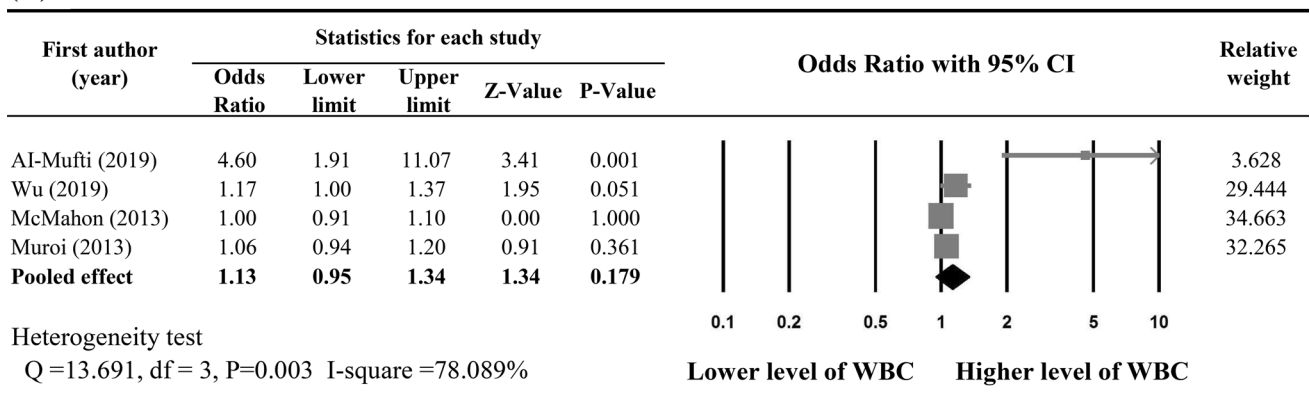


Fig. 2 Meta-analysis on the associations between occurrence of DCI and **a** CRP level and **b** WBC

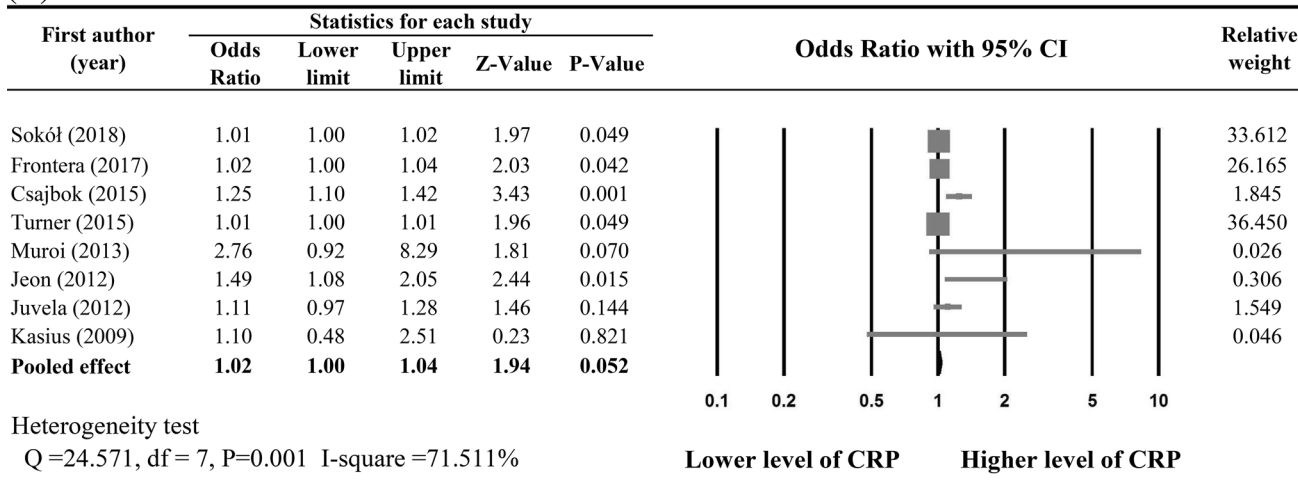
sample limits the clinical utility of a biomarker, and this highlights the need for searching for a quick, sensitive and safe biomarker which is easy to obtain for evaluating prognosis in aSAH. In addition, there is increasing evidence on the role of inflammation in the pathogenesis of DCI and poor outcomes following aSAH [27]. Among the common readily available markers for systemic inflammation, many studies have investigated the independent role of early increase in CRP and WBC as risk factors for unfavorable outcomes after aSAH. However, the correlations remained inconclusive and there is no consensus on their value for assessing prognosis in aSAH. For example, early phase CRP after aSAH have predicted poor outcome and/or DCI in a few studies [14, 20, 23], while not in others [16, 24]. Conflict results were also observed with respect to studies on WBC [15, 26, 30]. On the other hand, there is an extensive body of literature identifying blood CRP and WBC as an independent and relatively strong predictive

marker for outcomes after ischemic stroke [31–33], it is reasonable for expecting these associations in aSAH.

Surprisingly, this present meta-analysis found early increase in CRP is only associated with DCI but not later poor functional outcomes. There is a known association between DCI and worse clinical outcomes. However, sensitivity analysis showed that removing Sokół et al. [15] or Turner et al. [22] resulted in a significant association between poor outcome and CRP, suggesting the pooled estimate was overly impacted by these two studies. There was a relatively distinct definition of poor outcome (GOS 1) in Sokół et al. [15], and longer duration from hemorrhage onset to sampling in Turner et al. [22] than in other studies, which may help to explain the discrepancies.

Moderate to substantial heterogeneity was detected in the analyses of present review. A number of factors may be responsible for the heterogeneity. Firstly, the time point of outcome evaluation among the studies was not unified and

(A)



(B)

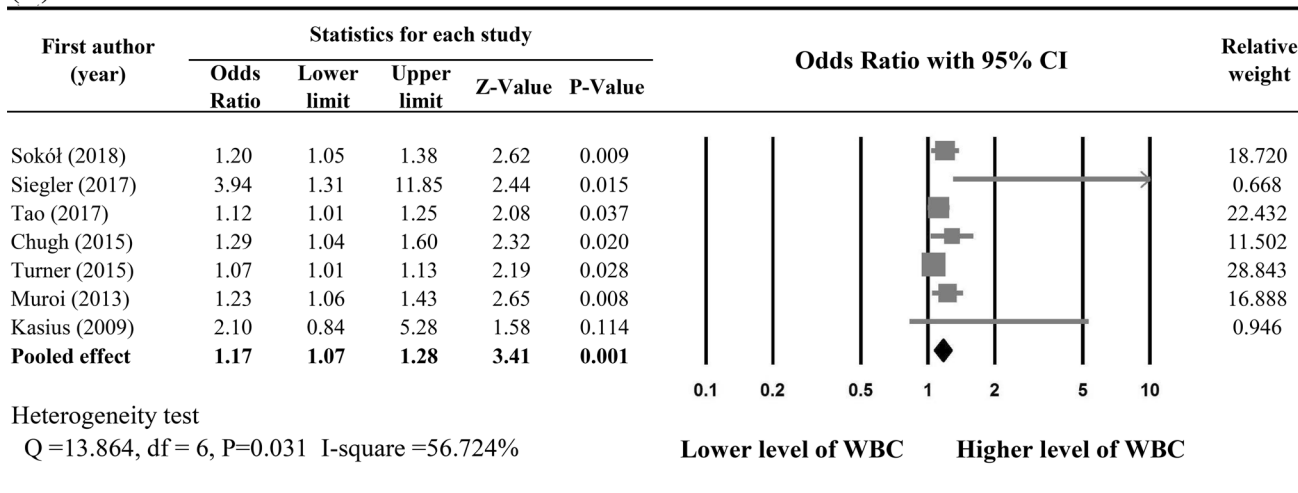


Fig. 3 Meta-analysis on the associations between poor function outcome and **a** CRP level and **b** WBC

not always clearly stated. Secondly, the aim of the present review was to analyze the associative role of early CRP/WBC. While most studies provided data of the first sampling on presentation, and although not markedly varied, there were still some variations in the timeframe of sample collection, and may contribute to the heterogeneity, since CRP is a sensitive marker and could have changed rapidly. Patient baseline characteristics, procedures performed, as well as factors adjusted for analyses differed across the studies, which may also contribute to the heterogeneity.

No meta-analyses have quantitatively analyzed the associations between CRP/WBC and DCI/functional outcome following SAH, although several recent systematic reviews have provided qualitative assessment of a broad range of potential biomarkers for aSAH outcomes, including CRP

and WBC [26, 34–36]. Jabbarli et al. [34] identified 21 genetic and non-genetic laboratory DCI biomarkers as ‘predictive biomarkers’ with level II evidence; peripheral CRP and WBC were evaluated in that review, of which level of evidence was considered insufficient, thus were allocated as ‘non-conclusive’ markers. Hong et al. [35] showed that serum CRP had increased specificity and sensitivity as a marker of inflammation after SAH and, as such, was a useful predictive indicator of vasospasm and less favorable functional outcomes after SAH. Authors of another study suggested utilizing CRP as prognostic indicator of SAH has a special value in sedated patients, because clinical condition of these patients is difficult to estimate [13].

The mechanisms underlying the associations observed remain unclear. Al-Mufti et al. [26] argued that WBCs

Table 3 Sensitivity analysis

First author (year)	Statistics with study removed				
	Points	Lower limit	Upper limit	Z value	P value
CRP and DCI					
Romero (2014)	1.18	1.07	1.30	3.45	0.001
McMahon (2013)	1.34	1.09	1.65	2.74	0.006
Muroi (2013)	1.29	1.07	1.54	2.74	0.006
Jeon (2012)	1.36	1.05	1.76	2.35	0.019
Juvela (2012)	1.39	1.11	1.73	2.92	0.004
WBC and DCI					
Al-Mufti (2019)	1.06	0.97	1.15	1.26	0.207
Wu (2019)	1.14	0.89	1.46	1.04	0.299
McMahon (2013)	1.27	0.94	1.71	1.58	0.115
Muroi (2013)	1.24	0.91	1.69	1.39	0.165
CRP and poor outcome					
Sokół (2018)	1.04	1.00	1.08	2.08	0.038
Frontera (2017)	1.02	1.00	1.04	1.61	0.108
Csajbok (2015)	1.01	1.00	1.02	1.79	0.074
Turner (2015)	1.05	1.00	1.09	2.20	0.028
Muroi (2013)	1.02	1.00	1.03	1.93	0.053
Jeon (2012)	1.02	1.00	1.03	1.88	0.061
Juvela (2012)	1.02	1.00	1.03	1.79	0.074
Kasius (2009)	1.02	1.00	1.04	1.93	0.054
WBC and poor outcome					
Sokół (2018)	1.17	1.05	1.31	2.85	0.004
Siegler (2017)	1.15	1.07	1.24	3.70	0.000
Tao (2017)	1.20	1.06	1.37	2.91	0.004
Chugh (2015)	1.16	1.05	1.27	2.96	0.003
Turner (2015)	1.21	1.10	1.34	3.73	0.000
Muroi (2013)	1.16	1.05	1.29	2.86	0.004
Kasius (2009)	1.16	1.06	1.27	3.35	0.001

produce reactive oxygen species (ROS) and disrupt the blood–brain barrier during extravasation into the cerebrum, which may contribute to DCI risk and poor outcomes in SAH. Those authors supported this by citing the finding of lymphocytic infiltrates on histopathologic staining of resected aneurysm tissue, which also have been considered as independent predictors of vasospasm [21, 30]. It is unlikely for us to infer whether or specifically how CRP/WBC may participate in the pathogenesis of DCI or the causal process in poor function after SAH. The observed associations may be explained by, as a previous study pointed out, that systemic inflammation as indicated by these parameters increases susceptibility to the development of DCI after SAH [16].

Authors of the review cited above also cautioned that CRP is an acute phase sensitive but non-specific inflammatory marker and it is not produced by brain tissue. SAH commonly has a secondary process such as pneumonia or other infection, which may lower the potential prognostic value of CRP [35]. In the present meta-analysis, differences

in patients' baseline characteristics and initial severity have been partially addressed by the multivariable models used in the included study adjusting for relevant factors (Table 2). Therefore, the pool estimation of CRP/WBC in related to outcome was not only a reflection of SAH severity. However, although several studies have, not all the included studies have excluded or adjusted for infection in their analyses. Also, assessment of infection is challenging and might have chance to be inaccurate [24]. Therefore, despite the fact we focused on the early period of aSAH and the parameters was mostly collected on admission in which infection was unlikely to present, the confounding by infection might have not been fully compensated. We are not able to make a further adjustment because of lacking raw data of individual studies.

Since CRP and WBC are relatively non-specific markers of inflammation. Evaluating other inflammatory markers such as Interleukin-6 (IL-6) and procalcitonin may provide additional insight. Unfortunately, few studies in the literature have looked into them; therefore, meta-analysis cannot

be performed. Muroi et al. [24] investigated the relationships among IL-6, procalcitonin and outcomes after SAH, reporting a significant correlation between IL-6 and poor outcome (adjusted OR 4.03, $P=0.02$) and DCI (adjusted OR 2.78, $P=0.03$). Those authors concluded higher IL-6 levels might be a useful parameter to monitor. McMahon et al. [16] assessed the relation between IL-6 and DCI, while no significant association was found (adjusted odds ratio 1.1, $P=0.46$). Another novel biomarker, red cell distribution width (RDW) which is strongly linked to inflammatory and thrombotic disease, was evaluated by three of the included studies [26, 29, 30]. Chugh et al. [30] reported a significant association between maximum daily RDW during first 10 days following hemorrhage onset and poor clinical outcome (adjusted OR 2.3, $P=0.014$). Siegler et al. [29] also reported a significant association between elevated 14-day mean RDW and poor functional outcome at discharge (mRS > 4, adjusted OR 2.59, $P=0.040$). However, elevated RDW in first 72 h was not associated with poor outcome in another study [26].

In the present review, we only identified associations and no predictive power was estimated due to insufficient reports. Among the studies included, Sokół et al. [15] reported the accuracy for prognosis of area under the curve (AUC) 0.74 ($P<0.05$) in early CRP and poor outcome by calculating receiver operating characteristic (ROC) curve. Turner et al. [22] reported an AUC 0.779 in early CRP for predicting poor outcome at discharge among good grade patients. Al-Mufti et al. [26] reported combined utilizing Fisher grade and elevated admission WBC together had an AUC over 0.7, which was more accurate than Fisher grade alone. These reports together highlighted the potential predicting power of early CRP/WBC on aSAH outcomes, which is valuable to be confirmed in the future studies.

Strengths and limitations

This is the first meta-analysis to evaluate the role of peripheral CRP and WBC in outcomes of aSAH. The studies included were determined to be of good quality. This review has several limitations that should be considered when interpreting the results. Although fifteen studies were included, the number of studies included in the analyses for individual outcome were relatively small, which limited the statistical power. Initial severity of ictus, comorbidities, infectious status, surgery and external ventricular drain may largely influence the parameters studied, and were not fully compensated in the analyses. Another weakness of this meta-analysis is that only association was identified, no predictive power was estimated due to the lack of consistent reports. Inflammatory markers other than CRP/WBC, as well as different subtypes of WBCs were not analyzed due to insufficient data. Despite the described limitations, the present review give insight into

the relationships of systemic inflammation with DCI and outcome after aSAH in general.

Conclusions

There appears to be some evidence indicating early increase in peripheral CRP is independently associated with the occurrence of DCI after SAH, and WBC associated with poor functional outcome at follow-up. Strong conclusion cannot be made due to the small study number, between-study heterogeneity and suspicion of uncontrolled factors. Future well-designed studies with prognostic accuracy evaluated, factors precisely adjusted and inflammatory biomarkers other than CRP/WBC assessed are highly warranted to determine whether monitoring circulating markers of inflammation benefits the risk identification after aSAH.

Funding No funding was received for this research.

Compliance with ethical standards

Conflict of Interest All authors certify that they have no affiliations with or involvement in any organization or entity with any financial interest (such as honoraria; educational grants; participation in speakers' bureaus; membership, employment, consultancies, stock ownership, or other equity interest; and expert testimony or patent-licensing arrangements), or non-financial interest (such as personal or professional relationships, affiliations, knowledge or beliefs) in the subject matter or materials discussed in this manuscript.

Ethical approval We exclusively assessed previously published data. Thus, ethical approval was not required for the conduction of the meta-analysis and systematic review.

References

1. De Rooij NK, Linn FHH, van der Plas JA, Algra A, Rinkel GJE (2007) Incidence of subarachnoid haemorrhage: a systematic review with emphasis on region, age, gender and time trends. *J Neurol Neurosurg Psychiatry* 78(12):1365–1372
2. Rinkel GJ, Algra A (2011) Long-term outcomes of patients with aneurysmal subarachnoid haemorrhage. *Lancet Neurol* 10(4):349–356
3. Macdonald RL, Schweizer TA (2017) Spontaneous subarachnoid haemorrhage. *Lancet* 389(10069):655–666. [https://doi.org/10.1016/s0140-6736\(16\)30668-7](https://doi.org/10.1016/s0140-6736(16)30668-7)
4. Boluijt J, Meijers JC, Rinkel GJ, Vergouwen MD (2015) Hemostasis and fibrinolysis in delayed cerebral ischemia after aneurysmal subarachnoid hemorrhage: a systematic review. *J Cereb Blood Flow Metab* 35(5):724–733
5. Francoeur CL, Mayer SA (2016) Management of delayed cerebral ischemia after subarachnoid hemorrhage. *Crit Care* 20(1):277–281
6. Rabinstein AA, Weigand S, Atkinson JL, Wijdicks EF (2005) Patterns of cerebral infarction in aneurysmal subarachnoid hemorrhage. *Stroke* 36(5):992–997

7. Dankbaar JW, Rijdsdijk M, Schaaf ICvd, Velthuis BK, Wermer MJH, Rinkel GJE, (2009) Relationship between vasospasm, cerebral perfusion, and delayed cerebral ischemia after aneurysmal subarachnoid hemorrhage. *Neuroradiology* 51(12):813–819
8. Vergouwen MDI, Ildigwe D, Macdonald RL (2011) Cerebral infarction after subarachnoid hemorrhage contributes to poor outcome by vasospasm-dependent and -independent effects. *Stroke* 42(4):924–929
9. Al-Mufti F, Amuluru K, Smith B, Damodara N, El-Ghanem M, Singh IP, Dangayach N, Gandhi CD (2017) Early emerging markers of delayed cerebral ischemia following aneurysmal subarachnoid hemorrhage: a literature review. *World Neurosurg* 107:148–159. <https://doi.org/10.1016/j.wneu.2017.07.114>
10. Galea JP, Dulhanty L, Patel HC (2017) Predictors of outcome in aneurysmal subarachnoid hemorrhage patients. *Stroke* 48(11):2958–2963. <https://doi.org/10.1161/strokeaha.117.017777>
11. Matano F, Fujiki Y, Mizunari T, Koketsu K, Tamaki T, Murai Y, Yokota H, Morita A (2019) Serum glucose and potassium ratio as risk factors for cerebral vasospasm after aneurysmal subarachnoid hemorrhage. *J Stroke Cerebrovasc Dis* 28(7):1951–1957. <https://doi.org/10.1016/j.jstrokecerebrovasdis.2019.03.041>
12. Sadamasa N, Yoshida K, Narumi O, Chin M, Yamagata S (2011) Prediction of mortality by hematological parameters on admission in patients with subarachnoid hemorrhage. *Neurol Med Chir* 51(11):745–748
13. Juvela S, Kuhmonen J, Siironen J (2012) C-reactive protein as predictor for poor outcome after aneurysmal subarachnoid haemorrhage. *Acta Neurochir* 154(3):397–404. <https://doi.org/10.1007/s00701-011-1243-7>
14. Csajbok LZ, Nylén K, Öst M, Sonander H, Nellgård B (2015) In-hospital C-reactive protein predicts outcome after aneurysmal subarachnoid haemorrhage treated by endovascular coiling. *Acta Anaesthesiol Scand* 59(2):255–264
15. Sokół B, Wąsik N, Więckowska B, Mańko W, Juszkat R, Jankowski R (2018) Predicting mortality in subarachnoid haemorrhage based on first-week routine blood tests. *J Clin Neurosci* 58:100–107. <https://doi.org/10.1016/j.jocn.2018.09.016>
16. McMahon CJ, Hopkins S, Vail A, King AT, Smith D, Illingworth KJ, Clark S, Rothwell NJ, Tyrrell PJ (2013) Inflammation as a predictor for delayed cerebral ischemia after aneurysmal subarachnoid haemorrhage. *J Neurointerv Surg* 5(6):512–517. <https://doi.org/10.1136/neurintsurg-2012-010386>
17. Stang A (2010) Critical evaluation of the Newcastle–Ottawa scale for the assessment of the quality of nonrandomized studies in meta-analyses. *Eur J Epidemiol* 25(9):603–605. <https://doi.org/10.1007/s10654-010-9491-z>
18. Higgins JPT, Thomas J, Chandler J, Cumpston M, Li T, Page MJ, Welch VA (2009) *Cochrane handbook for systematic reviews of interventions*. 2nd edn. Chichester (UK): John Wiley & Sons
19. Sterne JAC, Sutton AJ, Ioannidis JPA, Terrin N, Jones DR, Lau J, Carpenter J, Rucker G, Harbord RM, Schmid CH, Tetzlaff J, Deeks JJ, Peters J, Macaskill P, Schwarzer G, Duval S, Altman DG, Moher D, Higgins JPT (2011) Recommendations for examining and interpreting funnel plot asymmetry in meta-analyses of randomised controlled trials. *BMJ* 343(1):d4002–d4002. <https://doi.org/10.1136/bmj.d4002>
20. Romero FR, Cataneo DC, Cataneo AJ (2014) C-reactive protein and vasospasm after aneurysmal subarachnoid hemorrhage. *Acta Cirurgica Brasileira* 29(5):340–345. <https://doi.org/10.1590/s0102-86502014000500009>
21. Frontera JA, Provencio JJ, Sehba FA, McIntyre TM, Nowacki AS, Gordon E, Weimer JM, Aledort L (2017) The role of platelet activation and inflammation in early brain injury following subarachnoid hemorrhage. *Neurocrit Care* 26(1):48–57. <https://doi.org/10.1007/s12028-016-0292-4>
22. Turner CL, Budohoski K, Smith C, Hutchinson PJ, Kirkpatrick PJ, Murray GD, Collaborators S (2015) Elevated baseline C-reactive protein as a predictor of outcome after aneurysmal subarachnoid hemorrhage: data from the simvastatin in aneurysmal subarachnoid hemorrhage (STASH) trial. *Neurosurgery* 77(5):786–792. <https://doi.org/10.1227/NEU.0000000000000963>(discussion 792–783)
23. Jeon Y-T, Lee J-H, Lee H, Lee H-K, Hwang J-W, Lim Y-J, Park H-P (2012) The postoperative C-reactive protein level can be a useful prognostic factor for poor outcome and symptomatic vasospasm in patients with aneurysmal subarachnoid hemorrhage. *J Neurosurg Anesthesiol* 24(4):317–324
24. Muroi C, Hugelshofer M, Seule M, Tastan I, Fujioka M, Mishima K, Keller E (2013) Correlation among systemic inflammatory parameter, occurrence of delayed neurological deficits, and outcome after aneurysmal subarachnoid hemorrhage. *Neurosurgery* 72(3):367–375. <https://doi.org/10.1227/NEU.0b013e31828048ce>
25. Kasius KM, Frijns CJM, Algra A, Rinkel GJE (2010) Association of platelet and leukocyte counts with delayed cerebral ischemia in aneurysmal subarachnoid hemorrhage. *Cerebrovasc Dis* 29(6):576–583
26. Al-Mufti F, Misiolek KA, Roh D, Alawi A, Bauerschmidt A, Park S, Agarwal S, Meyers PM, Connolly ES, Claassen J (2019) White blood cell count improves prediction of delayed cerebral ischemia following aneurysmal subarachnoid hemorrhage. *Neurosurgery* 84(2):397–403
27. Wu Y, He Q, Wei Y, Zhu J, He Z, Zhang X, Guo Z, Xu R, Cheng C, Huang Z, Sun X (2019) The association of neutrophil-to-lymphocyte ratio and delayed cerebral ischemia in patients with aneurysmal subarachnoid hemorrhage: possible involvement of cerebral blood perfusion. *Neuropsychiatr Dis Treat* 15:1001–1007. <https://doi.org/10.2147/ndt.S190477>
28. Tao C, Wang J, Hu X, Ma J, Li H, You C (2017) Clinical value of neutrophil to lymphocyte and platelet to lymphocyte ratio after aneurysmal subarachnoid hemorrhage. *Neurocrit Care* 26(3):393–401. <https://doi.org/10.1007/s12028-016-0332-0>
29. Siegler JE, Marcaccio C, Nawalinski K, Quattrone F, Sandsmark DK, Maloney-Wilensky E, Frangos S, Levine JM, Stein SC, Kasner SE, Kumar MA (2016) Elevated red cell distribution width is associated with cerebral infarction in aneurysmal subarachnoid hemorrhage. *Neurocrit Care* 26(1):26–33. <https://doi.org/10.1007/s12028-016-0306-2>
30. Chugh C, Nyirjesy SC, Nawalinski KP, Sandsmark DK, Frangos S, Maloney-Wilensky E, Stein SC, Levine JM, Kasner SE, Kumar MA (2015) Red blood cell distribution width is associated with poor clinical outcome after subarachnoid hemorrhage: a pilot study. *Neurocrit Care* 23(2):217–224. <https://doi.org/10.1007/s12028-015-0117-x>
31. Yu B, Yang P, Xu X, Shao L (2019) C-reactive protein for predicting all-cause mortality in patients with acute ischemic stroke: a meta-analysis. *Biosci Rep*. <https://doi.org/10.1042/bsr20181135>
32. Geng H-H, Wang X-W, Fu R-L, Jing M-J, Huang L-L, Zhang Q, Wang X-X, Wang P-X (2016) The relationship between C-reactive protein level and discharge outcome in patients with acute ischemic stroke. *Int J Environ Res Public Health*. <https://doi.org/10.3390/ijerph13070636>
33. Turnbull FM, Whiteley W, Jackson C, Lewis S, Lowe G, Rumley A, Sandercock P, Wardlaw J, Dennis M, Sudlow C (2009) Inflammatory markers and poor outcome after stroke: a prospective cohort study and systematic review of interleukin-6. *PLoS Med*. <https://doi.org/10.1371/journal.pmed.1000145>
34. Jabbari S, Pierscianek D, Darkwah Oppong M, Sato T, Dammann P, Wrede KH, Kaier K, Köhrmann M, Forsting M, Kleinschnitz C, Roos A, Sure U (2018) Laboratory biomarkers of delayed cerebral ischemia after subarachnoid hemorrhage: a systematic review. *Neurosurg Rev*. <https://doi.org/10.1007/s10143-018-1037-y>

35. Hong CM, Tosun C, Kurland DB, Gerzanich V, Schreiber D, Simard JM (2014) Biomarkers as outcome predictors in subarachnoid hemorrhage—a systematic review. *Biomarkers* 19(2):95–108. <https://doi.org/10.3109/1354750x.2014.881418>
36. de Rooij NK, Rinkel GJE, Dankbaar JW, Frijns CJM (2013) Delayed cerebral ischemia after subarachnoid hemorrhage. *Stroke* 44(1):43–54. <https://doi.org/10.1161/strokeaha.112.674291>

Publisher's Note Springer Nature remains neutral with regard to jurisdictional claims in published maps and institutional affiliations.