


# Circadian rest-activity rhythm as an objective biomarker of patient-reported outcomes in patients with advanced cancer

Pasquale F. Innominato<sup>1,2,3</sup> | Sandra Komarzynski<sup>2,3</sup> | Oxana G. Palesh<sup>4,5</sup> |  
Robert Dallmann<sup>2</sup> | Georg A. Bjarnason<sup>6</sup> | Sylvie Giacchetti<sup>3,7</sup> |  
Ayhan Ulusakarya<sup>3,8</sup> | Mohamed Bouchahda<sup>3,8,9</sup> | Mazen Haydar<sup>8</sup> |  
Annabelle Ballesta<sup>2,3,10</sup> | Abdoulaye Karaboué<sup>11</sup> | Nicholas I. Wreglesworth<sup>1</sup> |  
David Spiegel<sup>4,5</sup> | Francis A. Lévi<sup>2,3,8</sup> 

<sup>1</sup>North Wales Cancer Centre, Ysbyty Gwynedd, Betsi Cadwaladr University Health Board, Bangor, UK

<sup>2</sup>Cancer Chronotherapy Team, Cancer Research Centre, Warwick Medical School, Coventry, UK

<sup>3</sup>Unit 935, French National Institute for Health and Medical Research (INSERM), Villejuif, France

<sup>4</sup>Department of Psychiatry and Behavioral Sciences, Stanford University, Stanford, California

<sup>5</sup>Stanford Cancer Institute, Stanford School of Medicine, Stanford, California

<sup>6</sup>Sunnybrook Odette Cancer Centre, University of Toronto, Toronto, ON, Canada

<sup>7</sup>Department of Oncology, Saint Louis Hospital, Public Hospitals of Paris (AP-HP), Paris, France

<sup>8</sup>Chronotherapy Unit, Department of Medical Oncology, Paul Brousse Hospital, Public Hospitals of Paris (AP-HP), Villejuif, France

<sup>9</sup>Mousseau Clinics, Evry, France

<sup>10</sup>Warwick Mathematics Institute, University of Warwick, Coventry, UK

<sup>11</sup>AK-SCIENCE, Research and Therapeutic Innovation, Vitry-sur-Seine, France

**Correspondence:** Francis A. Lévi, Cancer Chronotherapy Team, Division of Biomedical Sciences and Cancer Research Centre, Office B-166, Warwick Medical School, Warwick University, Gibbet Hill road, Coventry CV4 7AL, UK (F.Lévi@warwick.ac.uk).

## Funding information

7th Framework Programme of the European Union through the Coordinated Action on Systems Medicine, Grant/Award Number: Grant 305033; Medical Research Council, London, UK, Grant/Award Number: Grant MR/M013170; 7th Framework Programme of the European Union through the inCASA project, Grant/Award Number: Contract CIP 250505; ARTBC International, Villejuif, France

## Abstract

**Background:** Psychosocial symptoms often cluster together, are refractory to treatment, and impair health-related quality of life (HR-QoL) in cancer patients. The contribution of circadian rhythm alterations to systemic symptoms has been overlooked in cancer, despite a causal link shown under jet lag and shift work conditions. We investigated whether the circadian rest-activity rhythm provides a reliable and objective estimate of the most frequent patient-reported outcome measures (PROMs). **Methods:** Two datasets were used, each involving concomitant 3-day time series of wrist actigraphy and HR-QoL questionnaires: EORTC QLQ-C30 was completed once by 237 patients with metastatic colorectal cancer; MD Anderson Symptom Inventory (MDASI) was completed daily by 31 patients with advanced cancer on continuous actigraphy monitoring, providing 1015 paired data points. Circadian function was assessed using the clinically validated dichotomy index  $I < O$ .

Presented in part at the 2015 ASCO Palliative Care in Oncology Symposium, held in Boston, MA, on October 9th-10th [J Clin Oncol 33, 2015 (Suppl 29S, abstr 1)].

This is an open access article under the terms of the Creative Commons Attribution License, which permits use, distribution and reproduction in any medium, provided the original work is properly cited.

© 2018 The Authors. *Cancer Medicine* published by John Wiley & Sons Ltd.

Nonparametric tests compared PROMs and  $I < O$ . Effect sizes were computed. Sensitivity subgroup and temporal dynamics analyses were also performed.

**Results:**  $I < O$  values were significantly lower with increasing symptom severity and worsening HR-QoL domains. Fatigue and anorexia were worse in patients with circadian disruption. The differences were both statistically and clinically significant ( $P < 0.001$ ;  $d \geq 0.33$ ). Physical and social functioning, and global quality/enjoyment of life were significantly better in patients with robust circadian rhythm ( $P < 0.001$ ;  $d \geq 0.26$ ). Sensitivity analyses validated these findings.

**Conclusion:** Objectively determined circadian disruption was consistently and robustly associated with clinically meaningfully severe fatigue, anorexia, and interference with physical and social functioning. This supports an important role of the circadian system in the determination of cancer patients' HR-QoL and symptoms that deserves therapeutic exploitation.

#### KEYWORDS

actigraphy, Circadian, patient-reported outcome, quality of life, symptom

## 1 | INTRODUCTION

Currently, one in eight adults carries wearable “well-being” activity monitors,<sup>1</sup> with some 50 million such units been sold in the United States in 2016.<sup>2</sup> This positive perception of e-Health devices in the general population represents an opportunity for implementing objective measures of physiology and behavior complementing the assessments of symptoms and health-related quality of life (HR-QoL), especially in cancer patients.<sup>3</sup> Indeed, systemic psychosocial symptoms are usually subjectively rated using validated questionnaires evaluating patient-reported outcome measures (PROMs).<sup>4</sup> More specifically, fatigue, sleep disturbance, depression, and anorexia represent the most frequent psychosocial complaints of cancer patients.<sup>5</sup> Extensive research has shown that cancer patients tend to display multiple systemic symptoms that often cluster together.<sup>6</sup> Fatigue, anorexia, and affective disorders can also arise as a consequence of anticancer treatment, suggesting shared physiopathological mechanisms.<sup>7</sup> Such systemic ailments also reveal the disruption of those body clocks that time behavioral and cellular activities along the 24-hour cycle, for example, as a consequence of jet lag or shift work.<sup>8-11</sup> All living beings, from unicellular organisms to humans, are endowed with endogenous biological clocks that enable living organisms to anticipate cyclic environmental changes and coordinate physiological events.<sup>12</sup> The mammalian circadian timing system (CTS) is hierarchically organized and temporally controlled, and it coordinates several physiological processes, at whole-body, cellular, down to molecular, levels.<sup>13,14</sup> In particular, sleep-wake cycles, physical and mental performance, as well as appetite, are modulated along the 24 hours by the CTS.<sup>15,16</sup> As altered patterns

have been described for several circadian rhythms in cancer patients,<sup>15,17,18</sup> we hypothesized that systemic symptoms would be more severe in patients with circadian disruption. Two independent datasets were used to test this hypothesis. Based on the convenience of its noninvasive methodology and previous reports in smaller cohorts showing an association with fatigue and sleep problems,<sup>19-25</sup> we selected the circadian rest-activity rhythm as measured by wrist actigraphy.<sup>26,27</sup> Wrist actigraphy has been validated as an objective biomarker of circadian function.<sup>28</sup> Finally, objective actigraphy data were correlated with selected subjective PROMs, including systemic symptoms and HR-QoL domains.

## 2 | PATIENTS AND METHODS

### 2.1 | Study populations

For this study, we used datasets from two patient cohorts, involving different PROMs tools and methodologies. The original data were available for both objectively assessed circadian rest-activity rhythm (wrist actigraphy)<sup>28</sup> and subjectively rated symptoms as well as HR-QoL (with validated questionnaires) from the same patients. For both patient cohorts, approval had been obtained from the appropriate ethical review boards, and patients had provided signed informed consent.<sup>29-31</sup>

#### 2.1.1 | Cohort #1

The first set was composed of patients with metastatic colorectal cancer, who were not at time of monitoring having

anticancer treatment and had a WHO performance status of 0, 1, or 2. They had participated to either a monocentric study from May 1994 to January 1997 (Chronotherapy Unit, Department of Medical Oncology, Paul Brousse University Hospital, Villejuif, France)<sup>31</sup> or to a companion study of an international randomized trial involving nine institutions in four countries, from August 1999 to February 2002.<sup>29</sup>

Patients in both studies underwent wrist actigraphy monitoring for 72 consecutive hours (Mini-motionlogger, Ambulatory Monitoring Inc., Ardsley, NY, USA) and completed the European Organization for Research and treatment of Cancer Quality of Life Core (EORTC QLQ-C30 v2.0) questionnaire.<sup>32</sup> This internationally validated 30-item questionnaire incorporates eight symptoms, five functioning domains and one global QoL scale. All scores were transformed to a 0-100 scale, according to the recommended EORTC procedures. For the symptom scales, low scores corresponded to mild symptoms, whereas for the global QoL and its domains scales, low scores indicated poor functioning.<sup>32</sup> In the analysis, we selected the systemic symptoms (fatigue, anorexia, sleep problems, pain), global QoL, and the functioning domains (physical, role, and social), corresponding to the items in the M.D. Anderson Symptom Inventory (MDASI).<sup>33</sup>

### 2.1.2 | Cohort #2

The second set included patients with histologically proven advanced or metastatic cancer requiring medical treatment. The patients had participated to the pilot project on multidimensional tele-monitoring from home performed at the Chronotherapy Unit, Department of Medical Oncology, Paul Brousse University Hospital, Villejuif, France, between April 2012 and July 2013, within the framework of the inCASA European project (FP7).<sup>30</sup> The patients were equipped with a home-based platform for multidimensional tele-monitoring over at least 30 consecutive days. This remote surveillance included continuous wrist actigraphy (Micro-motionlogger, Ambulatory Monitoring Inc., Ardsley, NY, USA) and once-daily completion of an electronic version of the MDASI questionnaire<sup>33</sup> using an interactive screen. This 19-item validated questionnaire evaluates the severity (from 0 to 10) of 13 core symptoms and of their interference with six activities of daily living. Large scores for each item indicate severe symptoms.<sup>33</sup> Patients were monitored while being treated with chemotherapy, as indicated according to their medical condition.<sup>30</sup> Hence, this data-dense study provided dynamic patterns of circadian rest-activity rhythm and PROMs. As both circadian rest-activity rhythm and symptom severity on chemotherapy are not stationary and present temporary variations,<sup>34</sup> we did not pool all data from a single patient over the monitoring span (exceeding 30 days). Instead, we analyzed actigraphy data over 72 consecutive hours, with 3-day sliding windows and a 1-day shift, throughout the time series

in each patient, and used individual daily data in MDASI items scores, as previously described.<sup>30</sup> Hence, this dataset provided a larger amount of data than the actual number of patients. For the analysis, we selected the systemic symptoms (fatigue, anorexia, sleep disturbance, pain) and the interference items (general activity, work, relations with others, and enjoyment of life), corresponding to the items from the EORTC questionnaire.

Among both cohorts, there were no uncontrolled metabolic, endocrine, or autoimmune diseases and no symptomatic brain metastases (the details are provided in the original papers<sup>29-31</sup>).

Figure S1 displays the study flowchart.

## 2.2 | Wrist actigraphy

The wrist-worn accelerometers used in both cohorts were manufactured by the same company (Ambulatory Monitoring Inc., Ardsley, NY, USA), which provided also the dedicated analytical software (Action 4). In the second cohort study, the patients downloaded and tele-transmitted the rest-activity data collected over the past 24 hours using the home Internet platform.<sup>30</sup> For both cohorts, the epoch length for data collection was set at 1 minute, according to common practice.<sup>28</sup> The actigraph collects and stores the number of wrist accelerations per minute, across the three axes, from the non-dominant arm. The pattern of accelerations over time is then analyzed to compute pertinent parameters for assessing circadian rest-activity rhythm, over 72 consecutive hours, as recommended.<sup>28</sup>

## 2.3 | Statistical analyses

We selected the dichotomy index  $I < O$  as the most clinically relevant actigraphy parameter, based on prior studies from others and ourselves.<sup>29-31,35-38</sup>  $I < O$  is the percentage of activity counts per minute when the patient is in bed at night with values lower than the median activity count when the patient is out of bed during the day.<sup>39</sup> Hence, it can range from 0% to 100%. In case of restful sleep at night and lively activity during the day, a robust and prominent circadian rhythm is present, and  $I < O$  will be close to 100%.<sup>39</sup> To categorize patients with circadian disruption or not, we used the cut-off point for  $I < O$  of 97.5%, as previously identified and validated.<sup>36,37</sup> Thus, when  $I < O$  was lower or equal to 97.5% we estimated that circadian rest-activity rhythm disruption was present, whereas this rhythm was deemed maintained when  $I < O$  was greater than 97.5%.

Summary statistics were computed to describe the distribution of  $I < O$  values (median and interquartile range) and of PROMs (means, SD, and SEM). First, we categorized the PROMs items into terciles, and compared the distributions of  $I < O$  among the terciles with the Jonkheere-Terpstra

test. Secondly, we defined two categories of patients using the previously established cut-off point of 97.5% for  $I < O$  as a marker of circadian disruption. The distribution of the EORTC or the MDASI items were compared between the two groups, using an independent sample  $t$  test. We also evaluated the effect size of the difference in PROMs scores between the two groups by computing Cohen's  $d$ , with a threshold for clinically meaningful difference set at  $d \geq 0.25$ . Additionally, we assessed the clinical relevance of the absolute differences based on previously identified thresholds: 10 points for the EORTC questionnaire and one point for the MDASI scale, respectively.<sup>40,41</sup> We used also the nonparametric Mann-Whitney  $U$  test to compare questionnaires items according to  $I < O$  category, as sensitivity analysis. For cohort #1, we performed subgroup analysis according to sex, PS, and age, using the same methodology. For cohort #2, we performed additional comparisons of the dynamic patterns of PROMs and  $I < O$ . Thus, we computed the differences in  $I < O$  between each day and the previous one, with a sliding window approach. The distribution of changes in selected PROMs was compared in each of the three subgroups defined by the terciles of the changes in  $I < O$  (improved, stable, worsened) with Wilcoxon signed-rank test.

Moreover, Spearman's rank correlations between  $I < O$  and selected PROMs indices were computed for each cohort. Finally, we built a multivariate linear regression model with global quality of life (for cohort #1) or interference with enjoyment of life (for cohort #2) as dependent variables, and all the other selected PROMs of each questionnaire and  $I < O$  as independent variables, to assess the objective, additional information about HR-QoL provided by  $I < O$ . Analyses were performed using PASW v24 (SPSS, IBM Inc., Chicago, IL, USA) and Stata v14 (StataCorp LLC, College Station, TX, USA) software packages. The threshold for statistical significance was set at  $P \leq 0.005$ , correcting for multiple comparisons.

## 3 | RESULTS

### 3.1 | Study populations

Study cohort #1 included 237 patients with metastatic colorectal cancer, who completed the EORTC QLQ-C30 questionnaire and underwent 3-day wrist actigraphy recording (Table S1). Study cohort #2 included 31 patients, mostly suffering from advanced or metastatic gastro-intestinal malignancy and having 1015 valid dyads of 3-day wrist actigraphy recordings and daily completion of the MDASI questionnaire, at the intermediate day of the 3-day actigraphy sliding window (Table S1). Altogether, nearly 90% of the patients in either population had a performance status of 0 or 1, despite advanced disease (Table S1).<sup>29-31</sup>

### 3.2 | Descriptive statistics

Table S2 provides mean and SD values for EORTC symptom scales and quality of life domains (range, 0 to 100) in cohort #1, and for MDASI items (range, 0 to 10) in cohort #2 (Table S2).

The cut-off points for the terciles of PROMs are detailed in Table S3.

In both populations, the distribution of  $I < O$  values was skewed toward high values, as in previous reports<sup>38,42</sup> (Figure S2). Median values, in both cases, were close to 97.5%, formerly reported as a clinically meaningful cut-off point<sup>36,37</sup>: 96.9% [1st and 3rd quartiles: 93.6%-99.1%] for cohort #1, and 98.0% [95.8-99.0] for cohort #2 (Figure S1). Thus, the proportion of instances with circadian disruption (ie, with  $I < O \leq 97.5\%$ ) was 54.9% in cohort #1 and 44.4% in cohort #2.

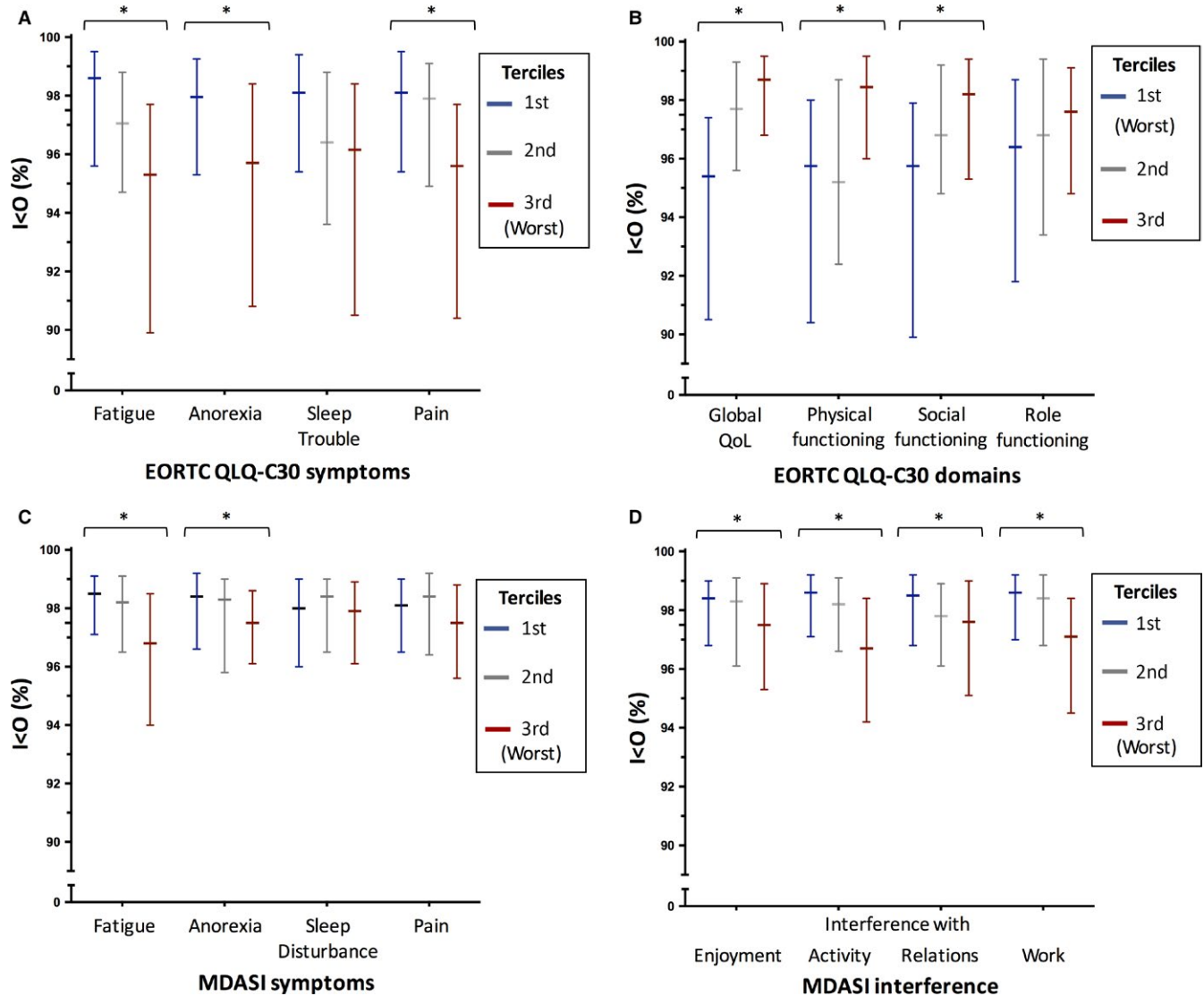
### 3.3 | Comparative analyses of wrist actigraphy monitoring and questionnaires

In cohort #1,  $I < O$  significantly decreased with increasing severity of fatigue ( $P < 0.0001$ ), anorexia ( $P < 0.0001$ ), pain ( $P < 0.0001$ ), and sleep trouble ( $P = 0.003$ ) (Figure 1A). In contrast,  $I < O$  significantly increased with greater values of global quality of life ( $P < 0.0001$ ), physical ( $P < 0.0001$ ), and social ( $P < 0.0001$ ) functioning, but not role ( $P = 0.02$ ) functioning (Figure 1B). In cohort #2, significantly lower  $I < O$  values were observed with gradually more severe fatigue and anorexia, as well as interference with enjoyment of life, activity, relations with others, and work (all  $P < 0.0001$ ), whereas differences were not significant for sleep disturbance ( $P = 0.56$ ) and pain ( $P = 0.009$ ; Figure 1C,D).

The comparison of PROMs as a function of circadian disruption ( $I < O \leq 97.5\%$ ) or robustness ( $I < O > 97.5\%$ ) yielded similar results. Thus, in cohort #1, patients with circadian disruption complained of statistically more severe fatigue ( $P < 0.0001$ ), anorexia ( $P < 0.0001$ ), and pain ( $P < 0.0001$ ), yet only a nonsignificant trend ( $P > 0.005$ ) was found for sleep trouble ( $P = 0.009$ ). In cohort #2, fatigue ( $P < 0.0001$ ) and anorexia ( $P < 0.0001$ ) were also rated as significantly more severe when  $I < O \leq 97.5\%$ , whereas sleep disturbance ( $P = 0.61$ ) and pain ( $P = 0.02$ ) were not.

In cohort #1, global quality of life ( $P < 0.0001$ ), physical functioning ( $P < 0.0001$ ), and social functioning ( $P < 0.0001$ ) were rated as significantly poorer by patients with  $I < O \leq 97.5\%$  as compared to those with higher  $I < O$  values, whereas role functioning ( $P = 0.04$ ) was not. In cohort #2, instances with circadian disruption were significantly associated with greater interference with enjoyment of life, activity, relations with others, and work (all  $P < 0.0001$ ). The associated effect sizes were of intermediate magnitude in both populations for the statistically





**FIGURE 1** Median (and interquartile range)  $I < O$  values in the subgroups defined by the tertiles of the PROMs items from the EORTC (panels A and B) and MDASI (panels C and D) questionnaires: blue, first; gray, second; red, third. In all cases, the higher the tertile, the more severe the symptom, except for the EORTC QLQ-C30 domains (panel B), in which the higher the tertile, the better the quality of life and the functioning. In all cases, stars indicate  $P < 0.0001$ . Other nonsignificant  $P$  values are detailed in the Section 3

different items (Table 1). Figure 2 displays the mean ( $\pm$ SEM) values for both populations for selected corresponding symptoms (panel A) or functioning/interference items (panel B).

Correlative analyses further confirmed a negative association between  $I < O$  and the severity of self-rated fatigue and anorexia, in both populations (Table 2).  $I < O$  was also found negatively correlated with pain and sleep trouble, and positively correlated with global quality of life, physical, social, and role functioning in cohort #1. In cohort #2,  $I < O$  was negatively correlated also with pain, and with interference with enjoyment of life, activity, relations with others and work, while it was positively correlated with interference with mood. The absolute values of the correlation coefficients were mostly  $\geq 0.2$ , yet invariably  $< 0.4$  (Table 2).

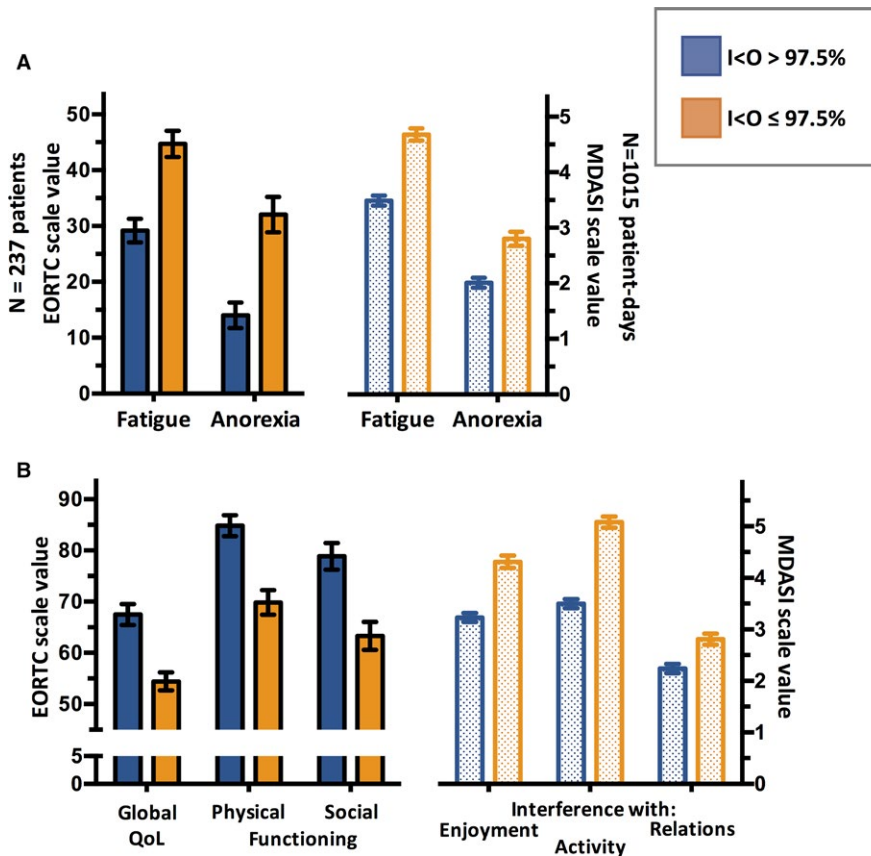
In both cohorts, multivariate logistic regression indicated that the rest-activity  $I < O$  parameter was significantly and independently associated with global quality of life (EORTC questionnaire) and interference with enjoyment of life (MDASI questionnaire), alongside all the other selected PROMs ( $P < 0.0001$  in both instances). Subgroup analyses according to sex, PS (0 vs 1 vs 2), and age (median-split) in cohort #1 consistently produced relationships between  $I < O$  on the one hand, and fatigue, anorexia, global quality of life, physical and social functioning on the other hand (Figure 3A).

In cohort #2, day-to-day  $I < O$  changes spanned between  $-17.0\%$  and  $+9.1\%$  (median: 0) and the intermediate tertile included instances with changes within  $\pm 0.3\%$ . The dynamics for a day to the next confirmed an increased

**TABLE 1** Differences in means and associated effect sizes (Cohen’s *d* values) between subgroups with circadian disruption ( $I < O \leq 97.5\%$ ) and those with robust circadian function ( $I < O > 97.5\%$ ) for all tested subjective items in each study population

	EORTC items [0-100] (cohort #1)			MDASI items [0-10] (cohort #2)			
	Difference	Cohen’s <i>d</i>	<i>P</i>	Difference	Cohen’s <i>d</i>	<i>P</i>	
Fatigue	15.5	0.63	<0.001	Fatigue	1.19	0.54	<0.001
Anorexia	18.0	0.58	<0.001	Anorexia	0.79	0.33	<0.001
Sleep trouble	10.3	0.34	0.009	Sleep disturbance	0.14	0.07	0.61
Pain	14.0	0.56	<0.001	Pain	0.53	0.20	0.02
Global Quality of Life	-13.0	0.64	<0.001	Interference with Enjoyment of Life	1.08	0.48	<0.001
Physical Functioning	-15.0	0.61	<0.001	Interference with Activity	1.58	0.73	<0.001
Social Functioning	-15.5	0.54	<0.001	Interference with Relations with Others	0.57	0.26	<0.001
Role Functioning	-10.1	0.31	0.04	Interference with Work	1.57	0.68	<0.001

Positive differences represent higher values when  $I < O \leq 97.5\%$ .



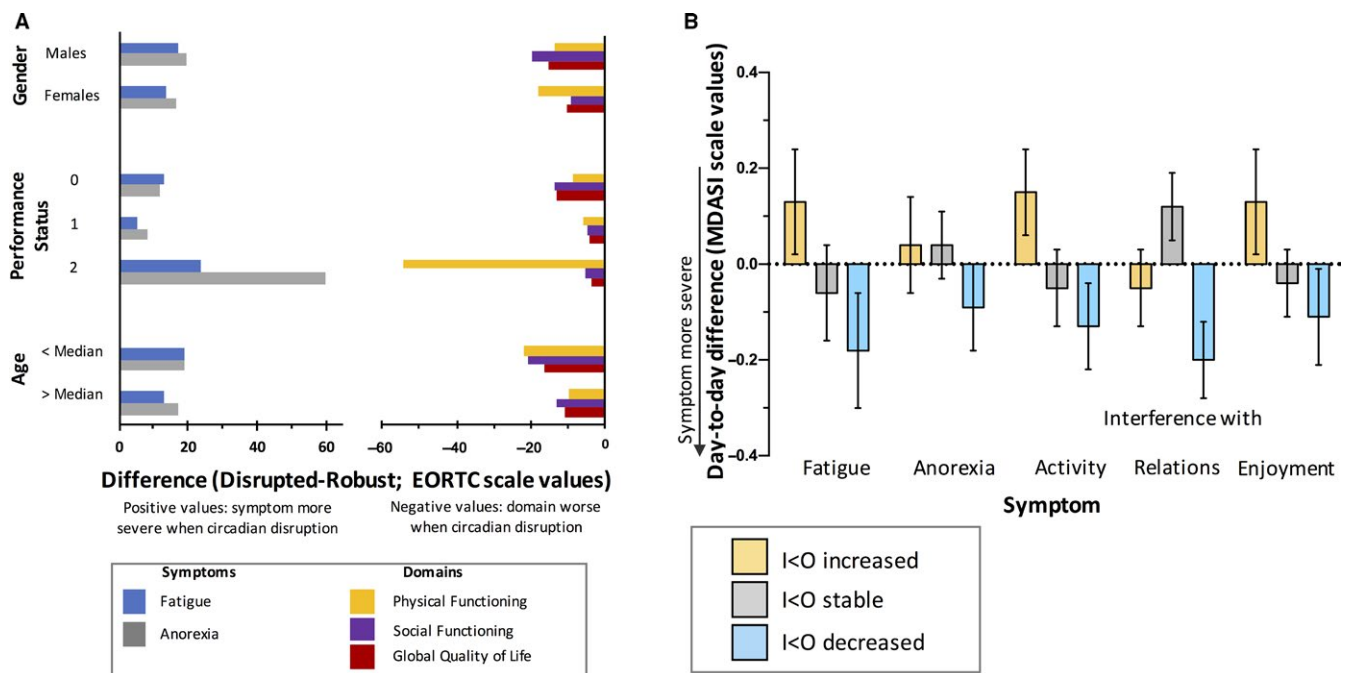
**FIGURE 2** Mean ( $\pm$ SEM) values PROMs indices according to high (blue) or low (orange)  $I < O$ , indicating robust and disrupted circadian rest-activity rhythm, respectively. For symptoms (panel A), in both scales, higher values imply worse symptom severity (range for EORTC: 0-100; for MDASI: 0-10). In panel B, for the EORTC scale, higher values designate better quality of life domains (range: 0-100), while for MDASI, lower values imply less intense interference (range: 0-10). For all comparisons,  $P < 0.001$

severity of fatigue, anorexia, interference with activity, relations, and enjoyment when  $I < O$  worsened during this same time frame (Figure 3B). Altogether, decreased symptom severity was also observed whenever  $I < O$

improved, except for interference with relations with others (Figure 3B). Although statistical significance was not always reached, the trend of the associations in changes appeared consistent.

Cohort #1	<i>r</i>	<i>P</i>	Cohort #2	<i>r</i>	<i>P</i>
EORTC items			MDASI items		
Fatigue	-0.33	<0.001	Fatigue	-0.26	<0.001
Anorexia	-0.29	<0.001	Anorexia	-0.17	<0.001
Sleep trouble	-0.20	0.002	Sleep disturbance	-0.03	0.28
Pain	-0.31	<0.001	Pain	-0.10	0.001
Global quality of life	0.33	<0.001	Interference with enjoyment of life	-0.19	<0.001
Physical functioning	0.36	<0.001	Interference with activity	-0.32	<0.001
Social functioning	0.28	<0.001	Interference with relations with others	-0.12	<0.001
Role functioning	0.19	0.004	Interference with work	-0.32	<0.001

**TABLE 2** Spearman's rank correlations between  $I < O$  and selected items from EORTC QLQ-C30 and MDASI questionnaires



**FIGURE 3** Sensitivity subgroup and dynamic analyses. Panel A (cohort #1): difference in mean EORTC item values between patients with circadian disruption ( $I < O \leq 97.5\%$ ) and circadian robustness, in the subgroups defined by sex, PS, and age. For the symptoms, positive values reflect worse severity in patients with circadian disruption. For the domains, negative values indicate poorer quality of life in patients with circadian disruption. Panel B (cohort #2): mean ( $\pm$ SEM) day-to-day changes in MDASI scores in the subgroups of cases defined by improved (yellow), stable (gray), or worsened (blue) circadian function (increased, unchanged, or decreased  $I < O$ , respectively). Changes to more severe symptoms the next day are associated with negative values

## 4 | DISCUSSION

The results from two subjective PROMs questionnaires (EORTC QLQ-C30 and MDASI) were compared to circadian rhythm quantitative estimates computed from

wrist actigraphy records in two cohorts of cancer patients. Statistically significant and clinically meaningful associations were found between circadian rest-activity rhythm alterations, and the severity of fatigue and anorexia, as well as the impairment of physical and social dimensions of HR-QoL and that of general well-being. Indeed, the size of the

differences was substantial and medically meaningful.<sup>40,41</sup> Moreover, the relationships between circadian rhythms and fatigue or anorexia were strikingly similar in both populations, in which symptoms and HR-QoL were assessed using distinct questionnaires. This observation, particularly when taking into account the time difference between the two data group collection, as well as complementary subgroup and intrasubject dynamic analyses, further supported the reliability of the findings. However, circadian rhythm alterations were only weakly associated with subjective sleep complaints, in line with prior reports.<sup>43,44</sup> This underscores the importance of obtaining objective as well as subjective reports of sleep quality and quantity.<sup>45,46</sup>

One of our study's limitations is that it does not provide definitive evidence as to whether circadian rhythm disruption is a cause, a consequence, or a correlate of fatigue and anorexia.<sup>47</sup> However, fatigue, anorexia, sleep disturbance, and mood alteration, a symptom cluster here linked to altered circadian rhythm, also characterize both jet lag after long-haul transmeridian flights and shift work, two conditions causing circadian disruption.<sup>8-11</sup> This observation therefore supports a causality link between circadian disruption and systemic symptoms, as well as reciprocal interactions.

Circadian rhythms rhythmically regulate physical fitness, appetite, mood, and sleep, while in turn, physical exercise, timing of meals and eating, sleep quality, and duration can reinforce circadian rhythms. Thus, poor circadian entrainment can also be expected in patients suffering from severe fatigue, anorexia, physical deterioration, or social impairment.<sup>48,49</sup> In contrast, those patients with mild or no fatigue or physical impairment, good appetite and regular social life, likely perform some outdoor activity, eat meals at consistent times, and routinely interact with others, thus better synchronizing their CTS (Figure S3). This hypothesis, supported by the current findings and previous reports,<sup>42,50,51</sup> has two clinically relevant implications. First, interventions developed to resynchronize subjects experiencing jet lag or shift work ought to be tested in symptomatic cancer patients with circadian disruption, aiming to improve their symptoms through a more robust circadian entrainment.<sup>52,53</sup> Recent data on behavioral treatments for cancer-related fatigue or insomnia endorse such novel therapeutic approaches.<sup>54,55</sup> However, potentially modifiable determinants of circadian disruption need to be identified on an individual basis, as synchronization interventions will require a personalized approach. Second, with the recent rapid development of wearable biosensors, it is possible to implement a continuous remote real-time monitoring of relevant behavioral and physiological rhythms. Together with the use of electronic PROMs, this could provide more effective care with timely personalized interventions for cancer patients in their home environment.<sup>30,56-58</sup>

In conclusion, we found a consistent and robust association between objectively assessed circadian rest-activity rhythm and fatigue, anorexia, physical and social functioning, as well as global quality of life, primarily in patients with advanced or metastatic gastro-intestinal cancer. The patients were from different institutions, and PROMs were assessed using two distinct internationally validated questionnaires.<sup>32,33</sup> The study confirmed and extended the clinical relevance of the dichotomy index  $I < O$ , a circadian parameter that is computed from wrist actigraphy monitoring time series. Here, we showed that  $I < O$  was an objective and continuously assessable biomarker of selected PROMs, which contributed with additional information to HR-QoL, as well as being an independent prognostic factor of overall survival in cancer patients.<sup>29,31,35-37</sup> The results support the development and testing of interventions targeting the circadian clock to relieve drug-refractory systemic symptoms and improve HR-QoL in cancer patients.

## ACKNOWLEDGMENTS

Supported by ARTBC International, Villejuif, France; the 7th Framework Program of the European Union through the inCASA project (Contract CIP 250505); the Coordinated Action on Systems Medicine (Grant 305033 FP7), and the Medical Research Council, London, United Kingdom (Grant MR/M013170).

## CONFLICT OF INTEREST

Innominato P.F., Komarzynski S., Palesh O.G., Dallmann R., Ulusakarya A., Bouchahda M., Haydar M., Ballesta A., Karaboué A., and Wreglesworth N.I. declare no conflict of interest. Bjarnason G.A. declares Honoraria from Pfizer, Novartis, and Bristol-Myers Squibb; consulting or advisory role for Pfizer, Novartis, and Bristol-Myers Squibb; research funding from Pfizer and Merck for his institution; and travel, accommodation expenses from Pfizer and Novartis. Giacchetti S. declares Honoraria from Novartis; consulting or advisory role for Eisai; and travel, accommodation expenses from Roche and Novartis. Spiegel D. declares consulting relationships with Sanofi Aventis and Bristol Meyers Squibb, unrelated to the content of this study. Lévi F.A. declares Honoraria from Philips Respironics; research funding from Philips Respironics for his institution; and travel, accommodation expenses from Philips Respironics and Merck-Serono.

## ORCID

Francis A. Lévi  <http://orcid.org/0000-0003-1364-7463>



## REFERENCES

- Omura JD, Carlson SA, Paul P, Watson KB, Fulton JE. National physical activity surveillance: users of wearable activity monitors as a potential data source. *Prev Med Rep.* 2017;5:124-126.
- Statista. Available from URL: <https://www.statista.com/statistics/538172/global-wearable-unit-sales-by-region/> (Last accessed on June 21st, 2018 at 10 PM GMT).
- Low CA, Dey AK, Ferreira D, et al. Estimation of symptom severity during chemotherapy from passively sensed data: exploratory study. *J Med Internet Res.* 2017;19:e420.
- Di Maio M, Basch E, Bryce J, Perrone F. Patient-reported outcomes in the evaluation of toxicity of anticancer treatments. *Nat Rev Clin Oncol.* 2016;13:319-325.
- Teunissen SC, Wesker W, Kruitwagen C, de Haes HC, Voest EE, de Graeff A. Symptom prevalence in patients with incurable cancer: a systematic review. *J Pain Symptom Manage.* 2007;34:94-104.
- Miaskowski C, Aouizerat BE, Dodd M, Cooper B. Conceptual issues in symptom clusters research and their implications for quality-of-life assessment in patients with cancer. *J Natl Cancer Inst Monogr.* 2007;000:39-46.
- Dantzer R, Meagher MW, Cleeland CS. Translational approaches to treatment-induced symptoms in cancer patients. *Nat Rev Clin Oncol.* 2012;9:414-426.
- Rajaratnam SM, Arendt J. Health in a 24-h society. *Lancet.* 2001;358:999-1005.
- Waterhouse J, Reilly T, Atkinson G, Edwards B. Jet lag: trends and coping strategies. *Lancet.* 2007;369:1117-1129.
- Foster RG, Wulff K. The rhythm of rest and excess. *Nat Rev Neurosci.* 2005;6:407-414.
- Sack RL. Clinical practice. Jet lag. *N Engl J Med.* 2010;362:440-447.
- Panda S, Hogenesch JB, Kay SA. Circadian rhythms from flies to human. *Nature.* 2002;417:329-335.
- Reppert SM, Weaver DR. Coordination of circadian timing in mammals. *Nature.* 2002;418:935-941.
- Roenneberg T, Mrosovsky M. The circadian clock and human health. *Curr Biol.* 2016;26:R432-R443.
- Innominato PF, Roche VP, Palesh OG, Ulusakarya A, Spiegel D, Levi FA. The circadian timing system in clinical oncology. *Ann Med.* 2014;46:191-207.
- Reddy AB, O'Neill JS. Healthy clocks, healthy body, healthy mind. *Trends Cell Biol.* 2010;20:36-44.
- Mormont MC, Levi F. Circadian-system alterations during cancer processes: a review. *Int J Cancer.* 1997;70:241-247.
- Sephton S, Spiegel D. Circadian disruption in cancer: a neuroendocrine-immune pathway from stress to disease? *Brain Behav Immun.* 2003;17:321-328.
- Ancoli-Israel S, Liu L, Rissling M, et al. Sleep, fatigue, depression, and circadian activity rhythms in women with breast cancer before and after treatment: a 1-year longitudinal study. *Support Care Cancer.* 2014;22:2535-2545.
- Berger AM, Farr LA, Kuhn BR, Fischer P, Agrawal S. Values of sleep/wake, activity/rest, circadian rhythms, and fatigue prior to adjuvant breast cancer chemotherapy. *J Pain Symptom Manage.* 2007;33:398-409.
- Berger AM, Wielgus K, Hertzog M, Fischer P, Farr L. Patterns of circadian activity rhythms and their relationships with fatigue and anxiety/depression in women treated with breast cancer adjuvant chemotherapy. *Support Care Cancer.* 2010;18:105-114.
- Levin RD, Daehler MA, Grutsch JF, et al. Circadian function in patients with advanced non-small-cell lung cancer. *Br J Cancer.* 2005;93:1202-1208.
- Miaskowski C, Lee K, Dunn L, et al. Sleep-wake circadian activity rhythm parameters and fatigue in oncology patients before the initiation of radiation therapy. *Cancer Nurs.* 2011;34:255-268.
- Roscoe JA, Morrow GR, Hickok JT, et al. Temporal interrelationships among fatigue, circadian rhythm and depression in breast cancer patients undergoing chemotherapy treatment. *Support Care Cancer.* 2002;10:329-336.
- Yennurajalingam S, Tayjasanant S, Balachandran D, et al. Association between daytime activity, fatigue, sleep, anxiety, depression, and symptom burden in advanced cancer patients: a preliminary report. *J Palliat Med.* 2016;19:849-856.
- Gresham G, Schrack J, Gresham LM, et al. Wearable activity monitors in oncology trials: current use of an emerging technology. *Contemp Clin Trials.* 2018;64:13-21.
- Berger AM, Wielgus KK, Young-McCaughan S, Fischer P, Farr L, Lee KA. Methodological challenges when using actigraphy in research. *J Pain Symptom Manage.* 2008;36:191-199.
- Ancoli-Israel S, Cole R, Alessi C, Chambers M, Moorcroft W, Pollak CP. The role of actigraphy in the study of sleep and circadian rhythms. *Sleep.* 2003;26:342-392.
- Innominato PF, Focan C, Gorlia T, et al. Circadian rhythm in rest and activity: a biological correlate of quality of life and a predictor of survival in patients with metastatic colorectal cancer. *Cancer Res.* 2009;69:4700-4707.
- Innominato PF, Komarzynski S, Mohammad-Djafari A, et al. Clinical relevance of the first domomedicine platform securing multidrug chronotherapy delivery in metastatic cancer patients at home: The inCASA European Project. *J Med Internet Res.* 2016;18:e305.
- Mormont MC, Waterhouse J, Bleuzen P, et al. Marked 24-h rest/activity rhythms are associated with better quality of life, better response, and longer survival in patients with metastatic colorectal cancer and good performance status. *Clin Cancer Res.* 2000;6:3038-3045.
- Aaronson NK, Ahmedzai S, Bergman B, et al. The European Organization for Research and Treatment of Cancer QLQ-C30: a quality-of-life instrument for use in international clinical trials in oncology. *J Natl Cancer Inst.* 1993;85:365-376.
- Cleeland CS, Mendoza TR, Wang XS, et al. Assessing symptom distress in cancer patients: the M.D. Anderson Symptom Inventory. *Cancer.* 2000;89:1634-1646.
- Ortiz-Tudela E, Iurisci I, Beau J, et al. The circadian rest-activity rhythm, a potential safety pharmacology endpoint of cancer chemotherapy. *Int J Cancer.* 2014;134:2717-2725.
- Chang WP, Lin CC. Correlation between rest-activity rhythm and survival in cancer patients experiencing pain. *Chronobiol Int.* 2014;31:926-934.
- Innominato PF, Giacchetti S, Bjarnason GA, et al. Prediction of overall survival through circadian rest-activity monitoring during chemotherapy for metastatic colorectal cancer. *Int J Cancer.* 2012;131:2684-2692.
- Levi F, Dugue PA, Innominato P, et al. Wrist actimetry circadian rhythm as a robust predictor of colorectal cancer patients survival. *Chronobiol Int.* 2014;31:891-900.

38. Natale V, Innominato PF, Boreggiani M, et al. The difference between in bed and out of bed activity as a behavioral marker of cancer patients: a comparative actigraphic study. *Chronobiol Int*. 2015;32:925-933.
39. Minors D, Akerstedt T, Atkinson G, et al. The difference between activity when in bed and out of bed. I. Healthy subjects and selected patients. *Chronobiol Int*. 1996;13:27-34.
40. Armstrong TS, Wefel JS, Wang M, et al. Net clinical benefit analysis of radiation therapy oncology group 0525: a phase III trial comparing conventional adjuvant temozolomide with dose-intensified temozolomide in patients with newly diagnosed glioblastoma. *J Clin Oncol*. 2013;31:4076-4084.
41. Osoba D, Rodrigues G, Myles J, Zee B, Pater J. Interpreting the significance of changes in health-related quality-of-life scores. *J Clin Oncol*. 1998;16:139-144.
42. Innominato PF, Mormont MC, Rich TA, Waterhouse J, Levi FA, Bjarnason GA. Circadian disruption, fatigue, and anorexia clustering in advanced cancer patients: implications for innovative therapeutic approaches. *Integr Cancer Ther*. 2009;8:361-370.
43. Moore CM, Schmiege SJ, Matthews EE. Actigraphy and sleep diary measurements in breast cancer survivors: discrepancy in selected sleep parameters. *Behav Sleep Med*. 2015;13:472-490.
44. Madsen MT, Huang C, Gogenur I. Actigraphy for measurements of sleep in relation to oncological treatment of patients with cancer: a systematic review. *Sleep Med Rev*. 2015;20:73-83.
45. Savard J, Morin CM. Insomnia in the context of cancer: a review of a neglected problem. *J Clin Oncol*. 2001;19:895-908.
46. Spiegel D. Losing sleep over cancer. *J Clin Oncol*. 2008;26:2431-2432.
47. Cappuccio FP, Miller MA. Sleep and mortality: cause, consequence, or symptom? *Sleep Med*. 2013;14:587-588.
48. Golombek DA, Rosenstein RE. Physiology of circadian entrainment. *Physiol Rev*. 2010;90:1063-1102.
49. Roenneberg T, Mrosovsky M. Entrainment of the human circadian clock. *Cold Spring Harb Symp Quant Biol*. 2007;72:293-299.
50. Eismann EA, Lush E, Sephton SE. Circadian effects in cancer-relevant psychoneuroendocrine and immune pathways. *Psychoneuroendocrinology*. 2010;35:963-976.
51. Miller AH, Ancoli-Israel S, Bower JE, Capuron L, Irwin MR. Neuroendocrine-immune mechanisms of behavioral comorbidities in patients with cancer. *J Clin Oncol*. 2008;26:971-982.
52. Ballesta A, Innominato PF, Dallmann R, Rand DA, Levi FA. Systems chronotherapeutics. *Pharmacol Rev*. 2017;69:161-199.
53. Hrushesky WJ, Grutsch J, Wood P, et al. Circadian clock manipulation for cancer prevention and control and the relief of cancer symptoms. *Integr Cancer Ther*. 2009;8:387-397.
54. Mustian KM, Alfano CM, Heckler C, et al. Comparison of pharmaceutical, psychological, and exercise treatments for cancer-related fatigue: a meta-analysis. *JAMA Oncol*. 2017;3:961-968.
55. Johnson JA, Rash JA, Campbell TS, et al. A systematic review and meta-analysis of randomized controlled trials of cognitive behavior therapy for insomnia (CBT-I) in cancer survivors. *Sleep Med Rev*. 2016;27:20-28.
56. Basch E, Deal AM, Kris MG, et al. Symptom monitoring with patient-reported outcomes during routine cancer treatment: a randomized controlled trial. *J Clin Oncol*. 2016;34:557-565.
57. Chung AE, Jensen RE, Basch EM. Leveraging emerging technologies and the "Internet of Things" to improve the quality of cancer care. *J Oncol Pract*. 2016;12:863-866.
58. Wysham NG, Wolf SP, Samsa G, Abernethy AP, LeBlanc TW. Integration of electronic patient-reported outcomes into routine cancer care: an analysis of factors affecting data completeness. *JCO Clinical Cancer Informatics*. 2017;1-10.

## SUPPORTING INFORMATION

Additional supporting information may be found online in the Supporting Information section at the end of the article.

**How to cite this article:** Innominato PF, Komarzynski S, Paless OG, et al. Circadian rest-activity rhythm as an objective biomarker of patient-reported outcomes in patients with advanced cancer. *Cancer Med*. 2018;7:4396-4405. <https://doi.org/10.1002/cam4.1711>