

# Enhanced airway sensory nerve reactivity in non-eosinophilic asthma

Hajar Ali,<sup>1</sup> Collin Brooks,<sup>1</sup> Julian Crane,<sup>2</sup> Richard Beasley,<sup>3</sup> Stephen Holgate,<sup>4</sup> Peter Gibson,<sup>5</sup> Philip Pattemore,<sup>6</sup> Yu-Chieh Tzeng,<sup>7</sup> Thorsten Stanley,<sup>8</sup> Neil Pearce,<sup>9</sup> Jeroen Douwes<sup>1</sup>

**To cite:** Ali H, Brooks C, Crane J, *et al.* Enhanced airway sensory nerve reactivity in non-eosinophilic asthma. *BMJ Open Resp Res* 2021;**8**:e000974. doi:10.1136/bmjresp-2021-000974

► Additional supplemental material is published online only. To view, please visit the journal online (<http://dx.doi.org/10.1136/bmjresp-2021-000974>).

Received 30 April 2021

Accepted 19 October 2021

## ABSTRACT

**Background** Neural mechanisms may play an important role in non-eosinophilic asthma (NEA). This study compared airway sensory nerve reactivity, using capsaicin challenge, in eosinophilic asthma (EA) and NEA and non-asthmatics.

**Methods** Thirty-eight asthmatics and 19 non-asthmatics (aged 14–21 years) underwent combined hypertonic saline challenge/sputum induction, fractional exhaled nitric oxide, atopy and spirometry tests, followed by capsaicin challenge. EA and NEA were defined using a sputum eosinophil cut-point of 2.5%. Airway hyperreactivity was defined as a  $\geq 15\%$  drop in FEV<sub>1</sub> during saline challenge. Sensory nerve reactivity was defined as the lowest capsaicin concentration that evoked 5 (C5) coughs.

**Results** Non-eosinophilic asthmatics (n=20) had heightened capsaicin sensitivity (lower C5) compared with non-asthmatics (n=19) (geometric mean C5: 58.3  $\mu$ M, 95% CI 24.1 to 141.5 vs 193.6  $\mu$ M, 82.2 to 456.0; p<0.05). NEA tended to also have greater capsaicin sensitivity than EA, with the difference in capsaicin sensitivity between NEA and EA being of similar magnitude (58.3  $\mu$ M, 24.1 to 141.5 vs 191.0  $\mu$ M, 70.9 to 514.0) to that observed between NEA and non-asthmatics; however, this did not reach statistical significance (p=0.07). FEV<sub>1</sub> was significantly reduced from baseline following capsaicin inhalation in both asthmatics and non-asthmatics but no differences were found between subgroups. No associations with capsaicin sensitivity and atopy, sputum eosinophils, blood eosinophils, asthma control or treatment were observed.

**Conclusion** NEA, but not EA, showed enhanced capsaicin sensitivity compared with non-asthmatics. Sensory nerve reactivity may therefore play an important role in the pathophysiology of NEA.

## INTRODUCTION

Asthma is generally associated with TH2-mediated, allergic airway inflammation.<sup>1</sup> However, some studies show that <50% of asthma cases are attributable to airway eosinophilia,<sup>2</sup> and that ~50% have no overt signs of either eosinophilic or neutrophilic inflammation.<sup>3</sup> In the absence of inflammation, the mechanisms underlying non-eosinophilic asthma (NEA) remain unclear but it is plausible that neural pathways may be involved.<sup>4</sup> While this notion is not new,<sup>5</sup>

## Key messages

- Is there a difference in airway sensory nerve reactivity between asthma inflammatory phenotypes and non-asthmatics?
- Using capsaicin challenge, non-eosinophilic asthmatics exhibited enhanced capsaicin sensitivity compared with non-asthmatics.
- Our findings suggest that sensory nerve reactivity may play a role in pathophysiology of non-eosinophilic asthmatics and may represent a novel phenotype-specific treatable trait.

there is increasing contemporary literature supporting a role for neural involvement: some studies suggest that altered autonomic regulation, involving vagal tone and reduced sympathetic tone, may be important,<sup>4</sup> while others have suggested that sensory nerve activation may play a key role in asthma pathogenesis.<sup>6,7</sup>

To date, evidence of altered airway sensory nerve reactivity in asthma, often measured using capsaicin challenge to induce cough by specifically targeting the transient receptor potential (TRP) vanilloid 1 (TRPV1) channel on sensory C-fibres, is equivocal.<sup>7</sup> One study observed an increase in capsaicin sensitivity among adult asthmatics,<sup>8</sup> while others found no difference between asthmatics and non-asthmatics.<sup>9,10</sup> Studies measuring associations between capsaicin response and inflammatory biomarkers including atopy,<sup>11,12</sup> soluble mediators,<sup>13–15</sup> fractional exhaled nitric oxide (FeNO),<sup>12,16</sup> sputum<sup>15,17,18</sup> and blood<sup>12,19</sup> eosinophil percentages have also shown mixed results. We hypothesise that these inconsistencies may be due to inflammatory asthma phenotypes expressing differential sensory nerve reactivity.

No studies have examined capsaicin responses across inflammatory asthma phenotypes assessed using induced sputum, which is considered representative of ‘actual’ airway pathophysiology.<sup>20</sup> This study compared

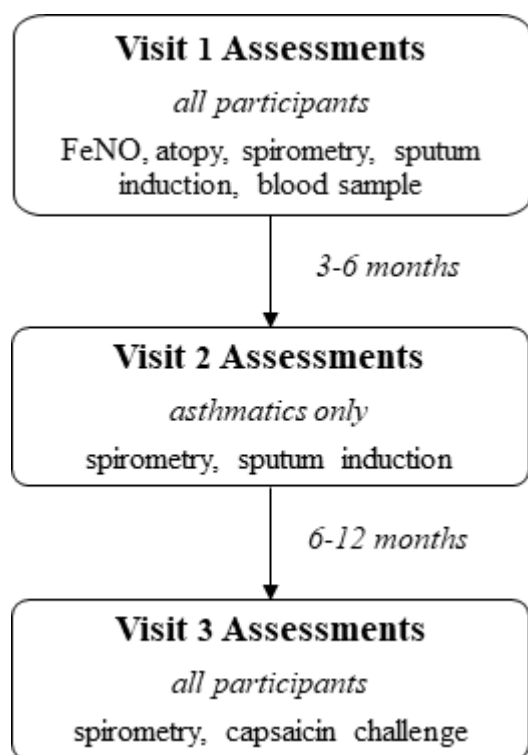


© Author(s) (or their employer(s)) 2021. Re-use permitted under CC BY-NC. No commercial re-use. See rights and permissions. Published by BMJ.

For numbered affiliations see end of article.

## Correspondence to

Dr Collin Brooks;  
c.r.brooks@massey.ac.nz



**Figure 1** Timeline of clinical assessments. FeNO, fractional exhaled nitric oxide.

sensory nerve reactivity between young asthmatics and non-asthmatics and across different asthma inflammatory phenotypes, and examined associations between sensory nerve reactivity and clinical, demographic and inflammatory characteristics.

## METHODS

### Study population

Participants (14–21 years), recruited from Wellington, New Zealand (either from a birth cohort study<sup>21</sup> or through separate community-based recruitment), completed a respiratory questionnaire based on the International Study of Asthma and Allergies in Childhood (ISAAC) Phase II survey.<sup>22</sup> (The ISAAC study assessed the prevalence of respiratory symptoms in nearly 2 million children and adolescents in >100 countries; the survey is available at <http://isaac.auckland.ac.nz/>). Asthma was defined as wheezing/whistling in the chest and/or asthma medication use in the last 12 months. Non-asthmatics reported no asthma symptoms, no other respiratory conditions or asthma medication use.

### Clinical assessments

Participants took part in a maximum of three assessments (the first involving all tests described below except capsaicin challenge) (figure 1). To confirm inflammatory phenotype stability, asthmatics underwent another sputum induction 3–6 months later. Capsaicin challenge was conducted at a final assessment (second visit for

non-asthmatics, third for asthmatics) for a proportion of non-smoking participants identified as either eosinophilic asthma (EA), NEA or non-asthmatics (recruitment was random within each subgroup). Capsaicin challenge was conducted 6–12 months after the final sputum induction. Asthma control was assessed using the Asthma Control Questionnaire (ACQ7).<sup>23</sup> Participants with respiratory infection within 1 month of assessment returned when symptom-free and those with FEV<sub>1</sub>% predicted <75% were excluded. Prior to testing, asthma medication and antihistamines were withheld for ≥12 and ≥24 hours, respectively.

### Spirometry and FeNO

Spirometry and FeNO was measured using an Easyone spirometer (NDD Medizintechnik AG, Zurich, Switzerland) or Hypair FeNO analyser (Medisoft, Sorinnes, Belgium) as described previously.<sup>3,24</sup>

### Atopy

Skin prick tests were conducted using a panel of aeroallergens as described previously: house dust mite, tree mix, grass mix, cat and dog dander, *Alternaria tenuis* and *Penicillium* mix (Stallergenes Greer, Sydney, Australia). Atopy was determined by presence of at least one weal >3 mm.<sup>3</sup>

### Blood eosinophils

Blood was collected using BD-vacutainers (BD, Auckland, New Zealand) for a complete blood count. A high blood eosinophil count (blood EOS-high) was defined as ≥250 eosinophils/mm<sup>3</sup>.<sup>3,25</sup>

### Combined hypertonic saline challenge and sputum induction

Hypertonic saline challenge/sputum induction was conducted as described previously.<sup>26</sup> Briefly, aerosolised hypertonic saline (4.5% w/v) was produced using an ultrasonic nebuliser (DeVilbiss Ultraneb 2000, Langen, Germany) and administered orally through a mouthpiece (Hans-Rudolph, Kansas City, USA) for increasing intervals from 0.5 to 4 min, to a total of 16 min. Spirometry was conducted between intervals, and salbutamol was administered if FEV<sub>1</sub> dropped to ≤75%-predicted. During the procedure, the number of coughs was not counted. Participants were subsequently encouraged to produce sputum in a sterile plastic container. Sputum plugs were dispersed using dithiothreitol (Sputasol, Oxoid, Basingstoke, Hampshire, England). The suspension was filtered through a 60 µm filter (Millipore, County Cork, Ireland) and total cell count and viability performed. Following centrifugation, supernatant was aspirated and stored at –80°C and the resulting cell suspension was used to prepare cytospin slides stained using a Diff-Quik fixative/stain set (Dade Behring, Deerfield, Illinois, USA). A differential cell count of 400 non-squamous cells was made using light microscopy. Samples

were considered to be adequate for analysis if they had a squamous cell contamination <30% and >400 total non-squamous cells on one slide. EA was identified as  $\geq 2.5\%$  eosinophils at any visit and NEA as <2.5% eosinophils at both visits. Airway hyperreactivity (AHR) was defined as a  $\geq 15\%$  drop in FEV<sub>1</sub> from baseline.<sup>26</sup>

### Capsaicin challenge

Capsaicin challenge was conducted as described previously<sup>11</sup> with minor modifications. Capsaicin (Sigma-Aldrich, Castle Hill, Australia) was solubilised in ethanol/Tween 80.<sup>11</sup> Participants inhaled single breaths of aerosolised capsaicin solution in doubling concentrations (0.98–500  $\mu\text{M}$ ) from a jet nebuliser (model 646, DeVilbiss, Langen, Germany) controlled by a KoKo dosimeter (nSpire Health, Louisville, Colorado, USA). One-minute intervals were maintained between different concentrations. The lowest concentration eliciting 2 (C2) and 5

(C5) coughs during a 30 s interval between each concentration was manually recorded by a nurse. The procedure was terminated if/when the C5 threshold was reached. If C2 or C5 was not reached, a value of 1000  $\mu\text{M}$  was assigned for analysis. Lung function was measured before and after capsaicin challenge.

### Power and statistical analysis

The primary aim of this study was to compare capsaicin response in asthmatics and non-asthmatics, and EA and NEA. Based on power calculations conducted prior to commencing the study, which assumed a differences in concentration of capsaicin to elicit 2 coughs of 53.6 (19.0)  $\mu\text{mol/L}$  in asthmatics and 116.0  $\mu\text{mol/L}$  (SD 58.1) in non-asthmatics,<sup>27</sup> we determined that 20 participants in each subgroup (non-asthmatics, EA and NEA) would be sufficient (>99% power) to detect statistically

**Table 1** Population characteristics

	Non-asthma (n=19)	Asthma (n=38)	Eosinophilic asthma (n=18)	Non-eosinophilic asthma (n=20)
Age	21.0 (2.0)	19.0 (2.0)**	18.3 (2.0)	19.3 (2.0)
Males, n (%)	6 (32.0)	14 (37.0)	6 (33.0)	8 (40.0)
Height (cm)	170.0 (8.3)	167.4 (9.0)	165.0 (8.1)	168.7 (9.5)
Weight (kg)	67.0 (12.6)	67.4 (15.4)	62.2 (12.1)	72.2 (17.0)
Ethnicity				
European-NZ (%)	18 (94.7)	30 (78.9)	14 (77.8)	16 (80.0)
Non-European-NZ (%)	1 (5.3)	8 (21.1)	4 (22.2)	4 (20)
Passive smoking‡	2 (10.5)	3 (8.0)	1 (6.0)	2 (10.0)
Asthma medication‡				
No asthma medication, n (%)		8 (21.1)	3 (17.0)	5 (25.0)
ICS alone, n (%)		6 (15.7)	4 (22.2)	2 (10.0)
$\beta$ -agonist alone, n (%)		7 (18.4)	2 (11.1)	5 (25.0)
ICS and $\beta$ -agonist, n (%)		17 (44.8)	9 (50.0)	8 (40.0)
Sleep disturbance due to cough‡	0 (0.0)	14 (36.8)**	7 (39.0)	7 (35)
Dry cough at night§	0 (0.0)	13 (34.0)**	7 (39.0)	6 (30.0)
ACQ7 score		0.8 (0.3–1.3)	1.4 (0.7–1.7)††	0.6 (0.2–0.9)
FeNO (ppb)	41.5 (38.1)	66.6 (76.1)	82.3 (75.2)†	53.0 (76.0)
Atopy, ¶ n (%)	10 (53)	32 (84.2)*	17 (94.4)	15 (75.0)
Airway hyperreactivity, ‡‡ n (%)	0 (0.0)	15 (39.5)**	11 (61.1)††	4 (20.0)
Sputum eosinophils %	0.0 (0.0–0.3)	2.2 (0.0–10.7)**	12.0 (9.0–40)††	0.0 (0.0–0.8)
Sputum neutrophils %	13.0 (7.0–33.0)	8.3 (4.3–24.0)	7.8 (5.0–24.0)	8.5 (4.1–24.4)
Blood eosinophils (mm <sup>3</sup> )	200 (100–300)	500 (200–800)**	600 (500–900)††	200 (100–400)

Mean (SD), median (IQR) or frequency (%), Mann-Whitney test and  $\chi^2$  tests were used as appropriate.

Eosinophilic asthma defined as  $\geq 2.5\%$  sputum eosinophils.

\* $p < 0.05$ ; \*\* $p < 0.01$  asthmatics versus the reference population, † $p < 0.05$ ; †† $p < 0.01$  non-eosinophilic versus eosinophilic asthmatics.

‡In the past 12 months.

§In the past 12 months without cold or respiratory infection.

¶Positive SPT against one or more common allergens.

‡‡ $\geq 15\%$  drop in FEV<sub>1</sub> from baseline following hypertonic saline challenge.

ACQ7, Asthma Control Questionnaire; FeNO, fractional exhaled nitric oxide; ICS, Inhaled corticosteroids; SPT, skin prick test.

significant differences between asthma phenotypes, or between either asthma phenotype and non-asthmatics.

Analyses were performed using STATA V.11.0 (STATA Corp, College Station, Texas, USA) and GraphPad Prism 7.0 (Graphpad Software, La Jolla, California, USA). C2 and C5 values were expressed as geometric means (GM) with 95% CI, and C5 used as the primary outcome.<sup>11</sup> Mann-Whitney U tests, unpaired t-tests or  $\chi^2$  tests were used as appropriate. Linear regression was conducted using log-transformed C5. Regression coefficients were exponentiated and presented as relative differences that is, ratios (per unit increase for continuous variables and compared to the reference category for categorical variables). Ratios of >1 represent reduced capsaicin sensitivity whereas ratios of <1 represent heightened sensitivity. If significant associations were found, sensitivity analyses (excluding subgroups with or without specific characteristics) were conducted to assess robustness of findings.

## RESULTS

### Population characteristics

Thirty-nine asthmatics and 21 non-asthmatics were recruited (12 asthmatics and 20 non-asthmatics from the previous birth cohort study<sup>21</sup> and 27 asthmatics and 1 non-asthmatic through community-based recruitment). One asthmatic and two non-asthmatics were excluded due their FEV<sub>1</sub> being  $\leq 75\%$  predicted, leaving 38 asthmatics and 19 non-asthmatics. Asthmatics were slightly younger but no differences in sex, ethnicity, or FeNO were observed (table 1). Prevalence of atopy, AHR and sputum eosinophil percentages were higher in asthmatics. Of the asthmatics, 18% were classified as uncontrolled, 26.3% as partly controlled and 55.4% as well-controlled. Participants recruited from the community were slightly younger than participants from the birth cohort (mean

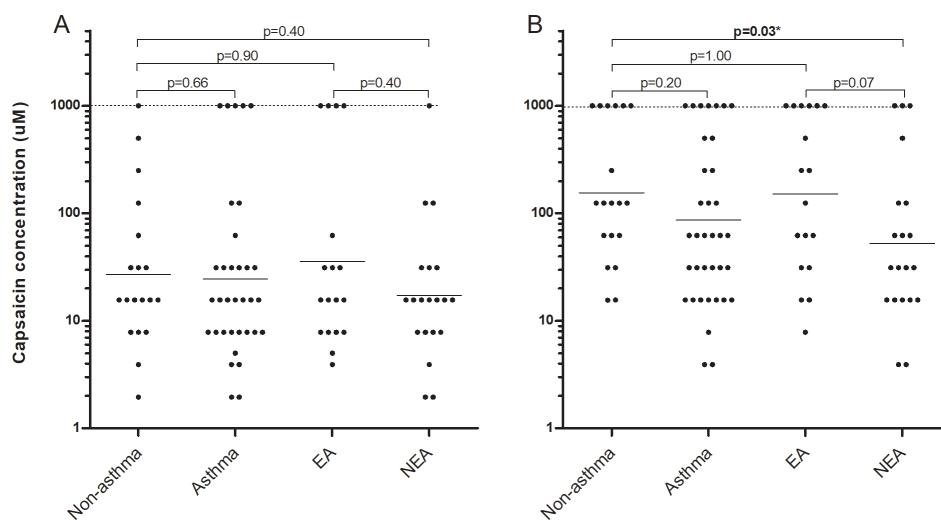
age: 18 vs 21 years), but all other baseline characteristics were comparable (data not shown).

### Inflammatory phenotypes

Fifty-three per cent (n=20) of asthmatics were NEA at both visits 1 and 2, with the remaining 47% (n=18) EA. EA were more likely to be atopic, and have AHR, higher FeNO, and more poorly controlled asthma than NEA (table 1). There were no differences in nocturnal cough symptoms (table 1). Neutrophilic asthma or mixed granulocytic asthma<sup>28</sup> were not detected, and sputum neutrophil levels were not significantly different between groups (table 1).

### Capsaicin response and inflammatory phenotypes

Capsaicin response did not differ between asthmatics and non-asthmatics (figure 2A,B) and was not associated with recruitment source (data not shown). However, NEA had significantly greater capsaicin sensitivity than non-asthmatics (GM 58.3  $\mu$ M, 95% CI 24.1 to 141.5 vs 193.6  $\mu$ M, 82.2 to 456.0; figure 2B). NEA tended to also have greater capsaicin sensitivity than EA, with the difference in capsaicin sensitivity between NEA and EA being of similar magnitude (58.3  $\mu$ M, 24.1 to 141.5 vs 191.0  $\mu$ M, 70.9 to 514.0) to that observed between NEA and non-asthmatics; however, this did not reach statistical significance (p=0.07). Using sputum eosinophil cutoffs of either 1%<sup>28</sup> or 3%<sup>29</sup> to define EA and NEA did not affect these findings (data not shown). Results for C2 showed no differences between groups (figure 2A). When excluding participants with elevated blood eosinophil levels (to avoid potential NEA phenotype misclassification), capsaicin sensitivity remained higher in NEA (C5 72.9  $\mu$ M, 14.2 to 374.9) than non-asthmatics (170.0



**Figure 2** Concentrations ( $\mu$ M) of capsaicin eliciting (A) 2 coughs (C2) or (B) 5 coughs (C5) in participants with and without asthma, and eosinophilic asthma (EA) and non-eosinophilic asthma (NEA). Dashed lines at 1000  $\mu$ M represent values assigned to those participants who did not achieve C2 or C5 during testing. Solid line represents geometric mean. Mann-Whitney test was used. \*p<0.05.



**Table 2** Associations between demographic and clinical characteristics and capsaicin response (C5)

	Relative difference (ratio) in capsaicin concentration to elicit 5 coughs†			
	Non-asthma (n=19)	Asthma (n=38)	Eosinophilic asthma (n=18)	Non-eosinophilic asthma (n=20)
	Ratio (95% CI)	Ratio (95% CI)	Ratio (95% CI)	Ratio (95% CI)
<b>Continuous variables</b>				
Age (years)	1.10 (0.70 to 1.72)	0.89 (0.70 to 1.09)	0.79 (0.51 to 1.25)	1.26 (0.80 to 1.98)
FEV <sub>1</sub> % predicted	0.99 (0.91 to 1.09)	1.02 (0.98 to 1.07)	1.07 (0.98 to 1.17)	1.02 (0.94 to 1.12)
FVC% predicted	0.96 (0.83 to 1.09)	1.00 (0.91 to 1.09)	1.05 (0.96 to 1.15)	0.96 (0.87 to 1.05)
FEV <sub>1</sub> /FVC% predicted	1.10 (0.92 to 1.31)	1.07 (0.98 to 1.17)	1.07 (0.94 to 1.23)	1.12* (1.03 to 1.23)
FeNO (ppb)	0.99 (0.97 to 1.01)	1.00 (0.99 to 1.01)	1.01 (1.00 to 1.02)	0.99* (0.98 to 1.00)
Sputum eosinophil %	0.91 (0.76 to 1.09)	1.02 (0.98 to 1.07)	0.99 (0.95 to 1.04)	0.63 (0.26 to 1.56)
Sputum neutrophil %	1.00 (0.94 to 1.10)	0.96 (0.93 to 1.00)	0.96 (0.91 to 1.01)	0.98 (0.93 to 1.02)
Blood eosinophil/mm <sup>3</sup>	0.99 (0.99 to 1.00)	1.01 (0.99 to 1.00)	1.00 (0.99 to 1.01)	0.99 (0.99 to 1.00)
ACQ7 score	–	1.74 (0.71 to 2.13)	1.59 (0.41 to 6.14)	0.40 (0.04 to 3.8)
<b>Dichotomous variables</b>				
Female (vs male)	0.81 (0.13 to 4.94)	1.59 (0.41 to 6.14)	3.98 (0.66 to 24.21)	0.63 (0.10 to 3.84)
Ethnicity (Eur vs non-Eur)	3.23 (0.53 to 19.68)	2.04 (0.53 to 7.91)	10.23* (1.68 to 62.23)	0.48 (0.12 to 1.85)
Dry cough at night (yes vs no)	–	0.32 (0.08 to 1.22)	0.14 (0.02 to 0.91)	0.9 (0.14 to 5.81)
Sleep disturbance due to cough (yes vs no)	–	1.27 (0.32 to 4.98)	1.70 (0.19 to 14.53)	0.80 (0.15 to 4.26)
AHR (yes vs no)	–	2.51 (0.65 to 9.73)	7.94* (1.31 to 48.31)	0.20 (0.03 to 1.21)
Atopy (yes vs no)	1.26 (0.21 to 7.66)	0.63 (0.10 to 3.84)	0.40 (0.01 to 23.12)	0.40 (0.07 to 2.42)
Treated (yes vs no)	–	0.33 (0.07 to 1.72)	0.23 (0.01 to 4.21)	0.25 (0.04 to 1.60)
ICS use (yes vs no)	–	0.81 (0.23 to 2.88)	1.14 (0.17 to 7.64)	0.41 (0.08 to 2.21)
β-agonist use (yes vs no)	–	1.02 (0.28 to 3.80)	1.14 (0.17 to 7.64)	1.02 (0.20 to 5.70)

\* p<0.05.

†As analyses were conducted on-log transformed C5 values, regression coefficients are shown as relative (ratios) rather than absolute differences (per unit increase in case of continuous variables and compared with the reference category in case of categorical variables); Ratios of >1 represent reduced capsaicin sensitivity whereas ratios of <1 represent heightened sensitivity.

ACQ7, Asthma Control Questionnaire; AHR, airway hyperreactivity; FeNO, fractional exhaled nitric oxide; ICS, Inhaled corticosteroids.

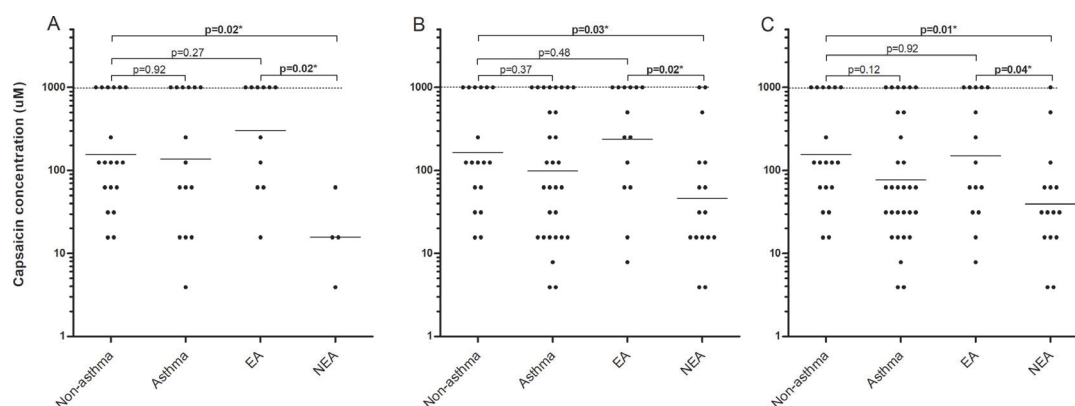
μM, 71.7 to 403.0), but findings were no longer statistically significant. When subjects were stratified by atopy (online supplemental figure 1) or blood eosinophils (online supplemental figure 2) rather than EA/NEA, we found no significant differences in C2 or C5 between groups.

### Capsaicin response and demographic/clinical characteristics

In asthmatics and non-asthmatics, no associations were found between capsaicin sensitivity and demographic parameters, asthma control, lung function, inflammatory markers, treatment or AHR (table 2). In EA, capsaicin sensitivity was significantly lower for Europeans (n=14) compared with non-Europeans (n=4; table 2). Capsaicin sensitivity was also significantly lower for those with (n=11) compared with without AHR (n=7; ratio=7.94, p<0.05). In NEA, C5 was inversely associated with FeNO (ratio=0.99 per unit increase, p<0.05) and positively associated with FEV<sub>1</sub>/FVC% predicted (ratio=1.12 per unit increase, p<0.05; table 2).

### Sensitivity analyses

Post hoc sensitivity analyses were conducted for characteristics independently associated with capsaicin response. Limiting analysis to asthmatics with AHR, we found that capsaicin sensitivity was significantly greater in NEA (15.6 μM, 2.6 to 95.0) than non-asthmatics (193.6 μM, 82.2 to 456.2) and EA (441.0 μM, 127.0 to 1533.0; figure 3A). Excluding non-Europeans (n=9) showed significantly increased capsaicin sensitivity in NEA (50.3 μM, 18.0 to 139.0) compared with non-asthmatics (206.0 μM, 84 to 507), and EA (320 μM, 104 to 989; figure 3B). To clarify the potential role of treatment status, we conducted further sensitivity analysis including only asthmatics who used either ICS or β-agonists (excluding n=5 NEA and n=3 EA). This also showed statistically significant (p<0.05) enhanced capsaicin sensitivity in NEA (39.4 μM, 16.9 to 91.4) compared with non-asthmatics (155.5 μM, 76.2– to 317.6) and EA (150.4 μM, 58.4 to 387.1; figure 3C). We also conducted sensitivity analysis based on lung function, FeNO (excluding NEA with elevated FeNO levels to address the issue of potential phenotype misclassification), ICS-use alone and gender (online



**Figure 3** Concentration ( $\mu\text{M}$ ) of capsaicin eliciting 5 (C5) coughs in participants with AHR (A), Europeans only (B), and in participants using inhaled corticosteroids (ICS) or  $\beta$ -agonist medication (C). Dashed lines at 1000  $\mu\text{M}$  represent values assigned to those participants who did not achieve C2 or C5 during testing. Solid line represents geometric mean. Mann-Whitney test was used. \* $p<0.05$ . AHR, airway hyperreactivity; EA, eosinophilic asthma; NEA, non-eosinophilic asthma.

supplemental results, online supplemental figures 3 and 4). These did not have an appreciable effect on the main findings (although in some cases results were no longer statistically significant).

### Capsaicin challenge and spirometry

$\text{FEV}_1\%$ -predicted and  $\text{FVC}\%$ -predicted were significantly reduced following capsaicin challenge in asthmatics and non-asthmatics. However, this was not different between subgroups, including EA and NEA (table 3).

### DISCUSSION

This study found enhanced airway sensory nerve reactivity in NEA compared with non-asthmatics, while no difference between EA and non-asthmatics was found,

suggesting that sensory nerve reactivity may play a role in the pathophysiology of NEA but not EA. No associations between capsaicin sensitivity and atopy, sputum eosinophils, blood eosinophils, asthma control or treatment were observed. However, AHR was associated with reduced capsaicin sensitivity in EA, while FENO was associated with increased capsaicin sensitivity in NEA.

Although our findings are consistent with some previous reports showing no difference in capsaicin response between asthmatics and non-asthmatics,<sup>9 10</sup> other studies found a heightened capsaicin response in asthma.<sup>8 12</sup> These inconsistencies may be due to demographic and methodical differences, or alternatively, as suggested here, airway sensory nerve reactivity may be specific to inflammatory phenotypes, with differences masked for comparisons with general asthma.

**Table 3** Changes in lung function following capsaicin challenge

	Non-asthma (n=19)	Asthma (n=38)	Eosinophilic asthma (n=18)	Non-eosinophilic asthma (n=20)
	Mean (SD)	Mean (SD)	Mean (SD)	Mean (SD)
<b>FEV<sub>1</sub> % predicted</b>				
Baseline	97.6 (7.9)	96.0 (10.7)	91.5 (11.1)†	99.6 (9.0)
Post	95.0 (8.0)	92.2 (11.2)	88.4 (11.1)†	96.0 (10.3)
$\Delta$	-2.7 (3.6)‡	-3.7 (-2.7)‡	-3.1 (2.7)‡	-4.3 (2.7)‡
<b>FVC % predicted</b>				
Baseline	97.7 (7.0)	100.0 (11.0)	98.0 (11.4)	102.0 (9.6)
Post	95.3 (7.5)	95.5 (10.9)	94.0 (11.2)	97.0 (11.0)
$\Delta$	-2.4 (2.5)‡	-3.3 (5.1)‡	-4.0 (4.2)‡	-4.6 (6.0)‡
<b>FEV<sub>1</sub>/FVC % predicted</b>				
Baseline	101.2 (4.4)*	97.3 (7.7)	94.9 (7.4)†	99.5 (7.4)
Post	100.0 (5.0)	97.0 (7.4)	94.5 (7.3)†	99.3 (7.0)
$\Delta$	-1.4 (3.0)	-0.3 (4.4)	-0.4 (3.1)	-0.2 (5.3)

Data presented as mean (SD). t-test: \* $p<0.05$ ; \*\* $p<0.01$  asthmatics versus the reference population; † $p<0.05$  non-eosinophilic versus eosinophilic asthmatics; ‡ $p<0.01$  baseline versus post capsaicin challenge.

To our knowledge, a direct relationship between sensory nerve reactivity and NEA has not previously been shown. However, recent studies have suggested an association with non-atopic asthma,<sup>7</sup> which, like NEA, may be driven by non-TH2 mechanisms.<sup>2</sup> For example, one study reported that capsaicin-induced cough was more pronounced in non-atopic asthmatics compared with atopic asthmatics or non-asthmatics.<sup>12</sup> Another study suggested that heightened capsaicin sensitivity is associated with poor asthma control/severity in non-atopic asthmatics.<sup>19</sup> However, data are equivocal and a study in non-asthmatics found no association with atopy,<sup>11</sup> suggesting that atopy does not reliably predict capsaicin response. In agreement, we observed no differences between non-atopic and atopic asthmatics, or between atopic or non-atopic individuals in general. However, our study was not powered to examine capsaicin response in non-atopics, who made up a small proportion (16%) of asthmatics, as is typical in New Zealand.<sup>3</sup>

Few studies have assessed associations between airway inflammation and sensory nerve reactivity; these yielded inconsistent results, possibly due to asthmatic airway inflammation heterogeneity. Three studies showed no association between capsaicin response and sputum eosinophilia<sup>15 17 18</sup>; however, in these studies capsaicin response was assessed in allergic asthmatics or following allergen challenge, which likely excluded individuals with TH2-low inflammation and/or NEA. Other studies used FeNO<sup>12 16</sup> or blood eosinophils<sup>12 19</sup> as indicators of TH2-mediated airway inflammation, and again, results varied.<sup>16 30</sup> In the present study, we used multiple TH2-indicators; both systemic (atopy, blood eosinophils) and airway-specific (FeNO, sputum eosinophils), but an increased capsaicin response was observed only in NEA. Capsaicin sensitivity was also associated with FeNO in NEA, but this association (a 1 ppb FeNO increase was associated with 1% greater capsaicin sensitivity) was small, and unlikely to be of clinical significance. The reasons for the mixed findings between studies are unclear, but it is possible that, while elevated FeNO and blood eosinophils are markers of TH2 inflammation, they may not be specific enough to accurately identify airway inflammatory patterns, and in particular, NEA (in our study 75% of NEA were atopic). This is supported by previous data showing that blood eosinophils and FeNO levels do not accurately predict sputum eosinophil percentages.<sup>20</sup>

The causes of enhanced sensory nerve reactivity in NEA are unknown. However, viruses and irritants, identified as potential triggers of asthma,<sup>7</sup> and NEA in particular,<sup>2</sup> may play a role. These may result in sensory nerve TRPV1 channel activation or increased expression, leading to increased cough response, even in the absence of other pathophysiology, such as AHR (as observed in the EA group in this study), or inflammation.<sup>7</sup> Similar hyperresponsive capsaicin-sensitive phenotypic changes have been reported in vasomotor rhinitis, despite no evidence of nasal mucosal inflammation.<sup>31</sup> Alternatively, increased capsaicin response may be due to alterations in

the afferent pathways or neuronal networks upstream of initial TRPV1 activation.<sup>7</sup>

Although we found no statistically significant associations with characteristics previously associated with capsaicin sensitivity such as age,<sup>15</sup> gender,<sup>12</sup> asthma control<sup>19</sup> or treatment,<sup>8</sup> we observed an association with ethnicity in EA. There are few studies examining associations between either sensory nerve reactivity or inflammatory phenotypes and ethnicity, and of the former, no association has been found.<sup>32</sup> As our finding was based on very small numbers, it may be due to chance.

Consistent with other studies,<sup>8 19</sup> baseline lung function was not associated with capsaicin response. However, following capsaicin challenge, FEV<sub>1</sub>%-predicted and FVC%-predicted were slightly decreased across all groups with no differences between subgroups. This is in agreement with previous studies showing that capsaicin does not cause clinically significant bronchoconstriction in asthmatics.<sup>12</sup> Our results suggest that while capsaicin produces an increased tussive response in NEA, it is not associated with clinically significant AHR in this (or any other) group.

The observation that increased sensory nerve reactivity is associated with NEA may have significant implications. As reported previously, NEA makes up >50% of asthma<sup>3</sup> and is less responsive to ICS,<sup>33</sup> the mainstay drug in asthma management. There is therefore a substantial and unmet need in the therapeutic management of this group. If sensory nerve reactivity plays a role in the pathology underlying NEA and is therefore a potential treatable trait,<sup>34</sup> then accurately identifying individuals with increased airway sensory reactivity, and developing specific therapeutic approaches targeting this, will be important. Of particular interest, recent reports suggest that anticholinergics (which are effective in some but not all asthma)<sup>35</sup> may markedly reduce airway reactivity to a variety of stimuli including capsaicin.<sup>4</sup> Tiotropium bromide reduces both cough and cough-reflex sensitivity in asthma refractory to ICS/LABA.<sup>36</sup> Alternatively, P2X3 antagonists (which have shown promise in the treatment of refractory chronic cough) may be of benefit.<sup>37</sup> However, it is currently unclear whether these will be effective in NEA, which was not associated with nocturnal cough symptoms in this study. It is also possible that capsaicin treatment itself may be beneficial in sensory nerve hyperreactivity in NEA, as has been shown in vasomotor rhinitis.<sup>38</sup> Finally, in addition to results being relevant to treatment, our findings suggest that capsaicin challenge, in conjunction with other methods such as sputum induction, AHR, FeNO and atopy testing, may be a useful tool to differentiate between asthma phenotypes, and provide important clues regarding causal (non-allergenic) exposures.

This study has limitations. First, the number of participants, particularly when stratified by phenotype, was relatively small. Although power calculations, based on limited observations from other studies, suggested sufficient power (see Methods), differences observed in our study were somewhat smaller than we had assumed and power to detect differences between groups was therefore reduced. This may explain why there was a



significant difference between NEA and non-asthmatics, and a similar difference between NEA and EA that did not reach statistical significance, involving slightly smaller numbers. In addition to reduced power, this study involved multiple comparisons, which may have contributed to some chance findings. However, for our main aim (to assess whether capsaicin responses are different across asthma inflammatory phenotypes, and non-asthmatics) and focusing on the primary outcome (C5), we found 7 (43.8%) statistically significant ( $p < 0.05$ ) findings across 16 comparisons (figures 2B and 3C), which is considerably more than expected based on chance alone (0.8; 5%). Therefore, based on the fact that results were highly consistent across multiple sensitivity analyses, we believe that these results are unlikely a chance finding. For table 2, which summarises the results of our secondary aim (to examine associations between sensory nerve activity and clinical, demographic, and inflammatory characteristics in asthmatics) we had fewer statistically significant findings (4 out of 54 (7.4%) compared with 2.7 (5%) expected for comparisons in asthmatics). Therefore, those associations are more likely explained by chance and should therefore be interpreted with a degree of caution.

Second, asthmatics were generally well-controlled and identified using an epidemiological definition and not on the basis of objective tests (such as bronchodilator reversibility and/or AHR). Therefore, some misclassification may have occurred, particularly for NEA, in which asthma symptoms are often present in the absence of objective measures (such as AHR).<sup>39</sup> However, we consider that any bias introduced as result will be minimal as this approach, used in previous studies,<sup>40–42</sup> generally compares well with clinical diagnoses,<sup>40</sup> and has been shown to be better than some objective measures.<sup>41</sup> Indeed, there are several issues with objective testing for confirmation of asthma diagnosis in a community based setting, particularly given the inherently variable nature of asthma, and that most asthmatics are not treatment naïve (>60% in the current study were using ICS at the time of assessment). This (among other reasons) has led to recommendations that asthma be considered on the basis of symptoms rather than pathophysiology.<sup>43</sup> In this study, of the 38 participants who we defined as asthmatics, 34 had their asthma diagnosed by a doctor (as indicated from the questionnaire); of the four subjects that were identified as asthmatic with no doctor diagnosis of asthma, three had used inhaled ICS in the past 14 days. Therefore, only one subject was defined based on respiratory symptoms alone. Excluding this person from the analyses did not materially change the results, although p values increased marginally (data not shown). Also, the main study findings were similar when applying a more stringent definition of asthma, that is, restricting analysis to only asthmatics who used ICS or  $\beta$ -agonists, or with AHR; suggesting that associations observed are robust and unlikely to be due to asthma misclassification.

Third, due to the cross-sectional nature of the study, capsaicin challenge was not repeated and reproducibility of capsaicin response in inflammatory phenotypes remains unstudied. However, a high degree of reproducibility of capsaicin response has been documented previously.<sup>44</sup> Fourth, there is a possibility that at least some of the NEA cases may be EA in which ICS suppressed airway eosinophilia.<sup>33</sup> However, post hoc analysis, excluding the four NEA participants who used ICS in the last 14 days, did not have an appreciable effect (although results were no longer statistically significant). Fifth, information regarding cough symptoms and medication use was collected on the basis of participant self-report using the ISAAC questionnaire. As such, data regarding ICS dose or asthma treatment step were unavailable, and although we have data regarding nocturnal cough symptoms, no information on daytime cough frequency was collected. We were therefore unable to determine if capsaicin response was associated with daytime or overall cough frequency. Finally, it has been suggested that a non-linear fix-modelling procedure may be more appropriate than fixed C2/C5 endpoints.<sup>12</sup> However, in this study, capsaicin challenge was terminated on reaching C5 (to avoid further participant discomfort). Hence, non-linear fix-modelling was not feasible.

In conclusion, our study shows that sensory nerve reactivity may play an important role in the pathophysiology of mild-to-moderate NEA in young adults. Although it is not yet clear if this is relevant in older groups or more severe asthma, we suggest that sensory nerve reactivity may represent a novel therapeutic target in NEA, a group in which current asthma medications have previously been shown to be less effective.<sup>33</sup>

#### Author affiliations

<sup>1</sup>Centre for Public Health Research, Massey University, Wellington, New Zealand

<sup>2</sup>School of Medicine and Health Sciences, University of Otago, Wellington, New Zealand

<sup>3</sup>Medical Research Institute of New Zealand, Wellington, New Zealand

<sup>4</sup>University of Southampton, Southampton, UK

<sup>5</sup>Department of Respiratory and Sleep Medicine, John Hunter Hospital, Newcastle, New South Wales, Australia

<sup>6</sup>Department of Paediatrics, University of Otago, Christchurch, New Zealand

<sup>7</sup>Centre for Translational Physiology, University of Otago, Wellington, New Zealand

<sup>8</sup>Department of Paediatrics and Child Health, University of Otago, Wellington, New Zealand

<sup>9</sup>Department of Non-communicable Disease Epidemiology and Medical Statistics, London School of Hygiene and Tropical Medicine, London, UK

**Acknowledgements** We are grateful to the study participants, Elizabeth Harding, Angela Thurston, Christoffer Martens, Stephanie Hobbs and Mary Tohill, for conducting the clinical assessments, Prachee Gokhale and Jeroen Burmanje for their involvement with sample processing, and Soo Cheng for her involvement in data analysis. We would also like to thank colleagues at the Centre for Translational Physiology, Otago University, Wellington, for allowing us to use their facility for the clinical assessments.

**Contributors** JD and CB contributed to the initial conception and design of the study. JD, CB, JC, RB, SH, PG, PP, Y-CT, TS and NP contributed to the final design of the study and the acquisition of research funding. HA, CB, JD, JC, RB, PP, Y-CT and TS contributed to data collection. All authors contributed to analysis and interpretation of the data. HA, CB and JD produced the first draft of the paper. All authors participated in preparing the final manuscript.



**Funding** The Centre for Public Health Research is funded by a Programme Grant from the Health Research Council (HRC) of New Zealand, and this research was funded by an HRC Project Grant.

**Competing interests** RB reports research funding from Health Research Council of New Zealand, AstraZeneca, GlaxoSmithKline and Genentech; and personal fees from AstraZeneca, Theravance, GlaxoSmithKline, Cipla and Avillion, outside the submitted work. PG reports research grants and personal fees from AstraZeneca, GlaxoSmithKline, Novartis outside the submitted work.

**Patient consent for publication** Not applicable.

**Ethics approval** Informed consent was obtained from participants/parents, and the study was approved by the Northern B Health and Disability Ethics Committee (15/NTB/2).

**Provenance and peer review** Not commissioned; externally peer reviewed.

**Data availability statement** Data are available upon reasonable request. The data that support the findings of this study are available from the corresponding author upon reasonable request.

**Supplemental material** This content has been supplied by the author(s). It has not been vetted by BMJ Publishing Group Limited (BMJ) and may not have been peer-reviewed. Any opinions or recommendations discussed are solely those of the author(s) and are not endorsed by BMJ. BMJ disclaims all liability and responsibility arising from any reliance placed on the content. Where the content includes any translated material, BMJ does not warrant the accuracy and reliability of the translations (including but not limited to local regulations, clinical guidelines, terminology, drug names and drug dosages), and is not responsible for any error and/or omissions arising from translation and adaptation or otherwise.

**Open access** This is an open access article distributed in accordance with the Creative Commons Attribution Non Commercial (CC BY-NC 4.0) license, which permits others to distribute, remix, adapt, build upon this work non-commercially, and license their derivative works on different terms, provided the original work is properly cited, appropriate credit is given, any changes made indicated, and the use is non-commercial. See: <http://creativecommons.org/licenses/by-nc/4.0/>.

## REFERENCES

- Barnes PJ. Immunology of asthma and chronic obstructive pulmonary disease. *Nat Rev Immunol* 2008;8:183–92.
- Douwes J, Gibson P, Pekkanen J, et al. Non-eosinophilic asthma: importance and possible mechanisms. *Thorax* 2002;57:643–8.
- Brooks CR, van Dalen CJ, Zacharasiewicz A, et al. Absence of airway inflammation in a large proportion of adolescents with asthma. *Respirology* 2016;21:460–6.
- Canning BJ, Woo A, Mazzone SB. Neuronal modulation of airway and vascular tone and their influence on nonspecific airways responsiveness in asthma. *J Allergy* 2012;2012:1–7.
- Douwes J, Brooks C, Pearce N. Asthma nervosa: old concept, new insights. *Eur Respir J* 2011;37:986–90.
- Mostafa GA, Reda SM, Abd El-Aziz MM, et al. Sputum neurokinin A in Egyptian asthmatic children and adolescents: relation to exacerbation severity. *Allergy* 2008;63:1244–7.
- Satia I, Nagashima A, Usmani OS. Exploring the role of nerves in asthma: insights from the study of cough. *Biochem Pharmacol* 2020;179:113901–901.
- Doherty MJ, Mister R, Pearson MG, et al. Capsaicin responsiveness and cough in asthma and chronic obstructive pulmonary disease. *Thorax* 2000;55:643–9.
- Fujimura M, Kamio Y, Hashimoto T, et al. Airway cough sensitivity to inhaled capsaicin and bronchial responsiveness to methacholine in asthmatic and bronchitic subjects. *Respirology* 1998;3:267–72.
- Prudon B, Birring SS, Vara DD, et al. Cough and glottic-stop reflex sensitivity in health and disease. *Chest* 2005;127:550–7.
- Chang AB, Gibson PG, Willis C, et al. Do sex and atopy influence cough outcome measurements in children? *Chest* 2011;140:324–30.
- Satia I, Tsamandouras N, Holt K, et al. Capsaicin-Evoked cough responses in asthmatic patients: evidence for airway neuronal dysfunction. *J Allergy Clin Immunol* 2017;139:771–9.
- De Diego A, Martínez E, Perpiñá M, et al. Airway inflammation and cough sensitivity in cough-variant asthma. *Allergy* 2005;60:1407–11.
- Choudry NB, Fuller RW, Pride NB. Sensitivity of the human cough reflex: effect of inflammatory mediators prostaglandin E<sub>2</sub>, bradykinin, and histamine. *Am Rev Respir Dis* 1989;140:137–41.
- Chang AB, Gibson PG. Relationship between cough, cough receptor sensitivity and asthma in children. *Pulm Pharmacol Ther* 2002;15:287–91.
- Ekstrand Y, Ternesten-Hasséus E, Arvidsson M, et al. Sensitivity to environmental irritants and capsaicin cough reaction in patients with a positive methacholine provocation test before and after treatment with inhaled corticosteroids. *J Asthma* 2011;48:482–9.
- Tatar M, Petriskova J, Zucha J, et al. Induced sputum eosinophils, bronchial reactivity, and cough sensitivity in subjects with allergic rhinitis. *J Physiol Pharmacol* 2005;56 Suppl 4:227–36.
- Minoguchi H, Minoguchi K, Tanaka A, et al. Cough receptor sensitivity to capsaicin does not change after allergen bronchoprovocation in allergic asthma. *Thorax* 2003;58:19–22.
- Kanemitsu Y, Fukumitsu K, Kurokawa R, et al. Increased capsaicin sensitivity in patients with severe asthma is associated with worse clinical outcome. *Am J Respir Crit Care Med* 2020;201:1068–77.
- Hastie AT, Moore WC, Li H, et al. Biomarker surrogates do not accurately predict sputum eosinophil and neutrophil percentages in asthmatic subjects. *J Allergy Clin Immunol* 2013;132:72–80.
- Epton MJ, Town GI, Ingham T, et al. The New Zealand asthma and allergy cohort study (NZAA2CS): assembly, demographics and investigations. *BMC Public Health* 2007;7:26.
- Weiland SK, Björkstén B, Brunekreef B, et al. Phase II of the International study of asthma and allergies in childhood (Isaac II): rationale and methods. *Eur Respir J* 2004;24:406–12.
- Juniper EF, O'Byrne PM, Guyatt GH, et al. Development and validation of a questionnaire to measure asthma control. *Eur Respir J* 1999;14:902–7.
- Brooks CR, Brogan S-BM, van Dalen CJ, et al. Measurement of exhaled nitric oxide in a general population sample: a comparison of the Medisoft HypAir FE(NO) and Aerocrine NIOX analyzers. *J Asthma* 2011;48:324–8.
- Nadif R, Siroux V, Oryszczyn M-P, et al. Heterogeneity of asthma according to blood inflammatory patterns. *Thorax* 2009;64:374–80.
- Gibson PG, Wlodarczyk JW, Hensley MJ, et al. Epidemiological association of airway inflammation with asthma symptoms and airway hyperresponsiveness in childhood. *Am J Respir Crit Care Med* 1998;158:36–41.
- Jesenak M, Babusikova E, Petrikova M, et al. Cough reflex sensitivity in various phenotypes of childhood asthma. *J Physiol Pharmacol* 2009;60 Suppl 5:61–5.
- Simpson JL, Scott R, Boyle MJ, et al. Inflammatory subtypes in asthma: assessment and identification using induced sputum. *Respirology* 2006;11:54–61.
- Pavord ID, Brightling CE, Woltmann G, et al. Non-Eosinophilic corticosteroid unresponsive asthma. *Lancet* 1999;353:2213–4.
- Satia I, O'Byrne PM. Identifying a Neurophenotype in severe asthma. *Am J Respir Crit Care Med* 2020;201:1024–5.
- Sin B, Togias A. Pathophysiology of allergic and nonallergic rhinitis. *Proc Am Thorac Soc* 2011;8:106–14.
- Dicpinigaitis PV, Allusson VR, Baldanti A, et al. Ethnic and gender differences in cough reflex sensitivity. *Respiration* 2001;68:480–2.
- Berry M, Morgan A, Shaw DE, et al. Pathological features and inhaled corticosteroid response of eosinophilic and non-eosinophilic asthma. *Thorax* 2007;62:1043–9.
- Agusti A, Bel E, Thomas M, et al. Treatable traits: toward precision medicine of chronic airway diseases. *Eur Respir J* 2016;47:410–9.
- Knöpfel BH, Bar-Or O, Araújo CGS. Effect of ipratropium bromide on EIB in children depends on vagal activity. *Med Sci Sports Exerc* 2005;37:354–9.
- Fukumitsu K, Kanemitsu Y, Asano T, et al. Tiotropium Attenuates Refractory Cough and Capsaicin Cough Reflex Sensitivity in Patients with Asthma. *J Allergy Clin Immunol Pract* 2018;6:1613–20.
- Abdulqawi R, Dockry R, Holt K, et al. P2X<sub>3</sub> receptor antagonist (AF-219) in refractory chronic cough: a randomised, double-blind, placebo-controlled phase 2 study. *Lancet* 2015;385:1198–205.
- Van Rijswijk JB, Boeke EL, Keizer JM, et al. Intranasal capsaicin reduces nasal hyperreactivity in idiopathic rhinitis: a double-blind randomized application regimen study. *Allergy* 2003;58:754–61.
- Gibson PG. What do non-eosinophilic asthma and airway remodelling tell us about persistent asthma? *Thorax* 2007;62:1034–6.
- Pekkanen J, Pearce N. Defining asthma in epidemiological studies. *Eur Respir J* 1999;14:951–7.
- Jenkins MA, Clarke JR, Carlin JB, et al. Validation of questionnaire and bronchial hyperresponsiveness against respiratory physician assessment in the diagnosis of asthma. *Int J Epidemiol* 1996;25:609–16.
- Brooks CR, Van Dalen CJ, Harding E, et al. Effects of treatment changes on asthma phenotype prevalence and airway neutrophil function. *BMC Pulm Med* 2017;17:169.
- Pavord ID, Beasley R, Agusti A, et al. After asthma: redefining airways diseases. *Lancet* 2018;391:350–400.
- Dicpinigaitis PV. Short- and long-term reproducibility of capsaicin cough challenge testing. *Pulm Pharmacol Ther* 2003;16:61–5.