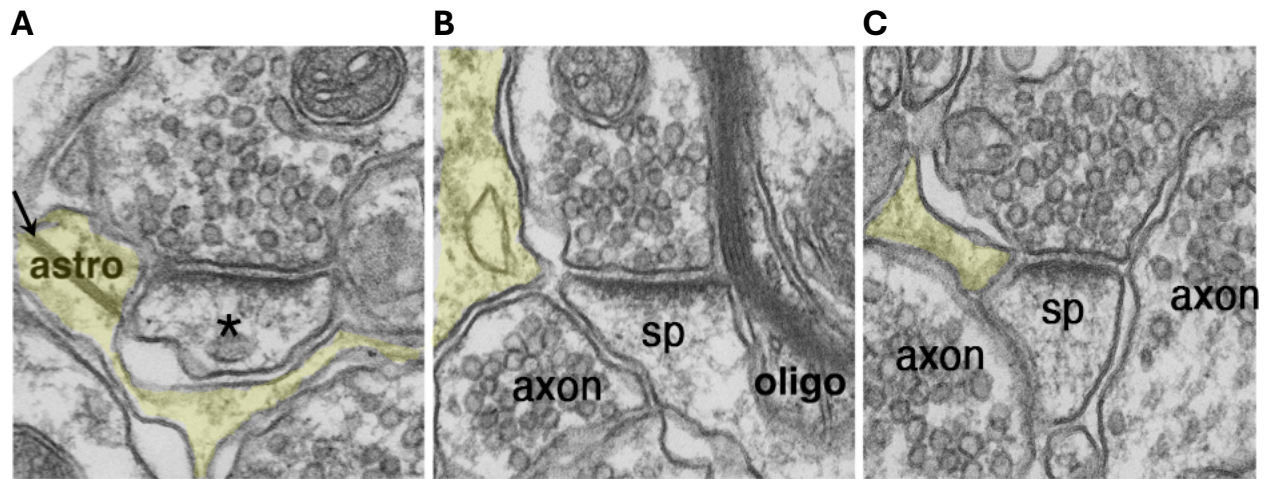


Supplementary Fig. 1



Examples of peri-synaptic astroglial processes (shaded in yellow) in hippocampal CA1 stratum radiatum. (A) Astrocytic processes with a characteristic gap junction (arrow) completely enwrapped this spine (asterisk). (B, C) Some spines (sp) were only partially ensheathed by astrocytic processes, while parts of the spine membranes were next to oligodendrocyte (B) or other neuronal elements (e. g., axon terminals in B & C).