

CASE REPORT

Open Access

Stuttered swallowing: Electric stimulation of the right insula interferes with water swallowing. A case report

Peter Sörös^{1,2*}, Faisal Al-Otaibi², Savio WH Wong^{3,4}, J Kevin Shoemaker³, Seyed M Mirsattari², Vladimir Hachinski², Ruth E Martin^{1,5}

Abstract

Background: Various functional resonance imaging, magnetoencephalographic and lesion studies suggest the involvement of the insular cortex in the control of swallowing. However, the exact location of insular activation during swallowing and its functional significance remain unclear.

Case presentation: Invasive electroencephalographic monitoring was performed in a 24-year-old man with medically intractable stereotyped nocturnal hypermotor seizures due to a ganglioglioma. During stimulation of the right inferior posterior insular cortex with depth electrodes the patient spontaneously reported a perception of a "stutter in swallowing". Stimulation of the inferior posterior insular cortex at highest intensity (4 mA) was also associated with irregular and delayed swallows. Swallowing was not impaired during stimulation of the superior posterior insular cortex, regardless of stimulation intensity.

Conclusions: These results indicate that the right inferior posterior insular cortex is involved in the neural circuitry underlying the control of swallowing.

Background

Swallowing is a complex sensorimotor function involving the coordinated activation of orofacial, pharyngeal, laryngeal, respiratory, and esophageal muscles. Although once attributed to brainstem circuits, electrophysiologic studies in animals [1], and functional brain-mapping in humans [2-4] have also implicated a distributed cortical-subcortical network in swallowing neural control involving the bilateral primary sensorimotor cortex, premotor and cingulate motor areas, frontoparietal operculum, and the insula (for review, see [5-7]). The notion of a cortical-subcortical network controlling swallowing is further supported by lesion studies in humans [8-11].

Although various lines of evidence, supported by functional resonance imaging [3,12], magnetoencephalography [13] and lesion data [8], point at the involvement of the insular cortex in the control of swallowing, the exact involvement of the insula and its functional

significance remain unclear. While the right anterior insula has been particularly implicated in swallowing impairment [11,14], brain-imaging studies of swallowing have reported both anterior and posterior insular activation. A recent quantitative meta-analysis of swallow-related brain activity reported high activation likelihood in the right anterior insular cortex for water swallowing, and in the right posterior insula for voluntary saliva swallowing [15].

Studying swallowing neural control is not only important for basic neurophysiological research but also from a clinical perspective because injury to the central nervous system such as stroke frequently results in significant swallowing impairment [16]. Indeed, brain injury can give rise to severe and protracted swallowing impairment, which necessitates tube feeding. Current understanding of the neuropathophysiology of swallowing impairment, the neuroplastic mechanisms underlying swallowing recovery, as well as the principles of swallowing rehabilitation is limited (for review, see [17]).

* Correspondence: peter.soros@gmail.com

¹School of Communication Sciences and Disorders, University of Western Ontario, London, Ontario, Canada

Full list of author information is available at the end of the article

Case presentation

Electrical stimulation of the right posterior insular cortex was performed in a 24-year-old right-handed man who developed medically intractable epilepsy at the age of 17 years and who was referred for invasive electroencephalographic monitoring and pre-surgical mapping. He was suffering from stereotyped nocturnal hypermotor seizures nearly every night. His neurological examination was normal. MRI of the brain showed a well-circumscribed tumor (18 × 12 × 11 mm) in the right posterior insular cortex (Figure 1A).

Pre-surgical electric stimulation was performed using depth electrodes that were implanted in the right posterior insular cortex, above and below the tumor (1 mm diameter size; Ad Tec Medical Instrument Corp., Racine, WI, USA) [18]. The depth electrodes were inserted stereotactically using a Leksell stereotactic frame and a Stealth station planning system (Medtronic-Sofamor Danek, Minneapolis, MN, USA). The depth electrode lines had 8 contacts (each 2 mm long) separated by 2 mm. A transopercular approach was used to implant the depth electrodes in the right insular cortex above and below the lesion. The distal electrode contacts of each depth line were located within the right posterior insular cortex. Location of the electrode contacts was confirmed by fusing a pre-implantation MRI to a post-implantation CT scan with the aid of a volumetric mutual information algorithm using the Atamai software (Atamai, Inc., London, ON, Canada; Figure 1B).

High frequency (50 Hz) bipolar electric impulses were applied at four different intensity levels (1, 2, 3 and 4 mA) with a pulse duration of 0.3 ms over 2 s (Grass Technologies, West Warwick, RI, USA). To assess the

potential impact of surgery on swallowing, the patient swallowed a continuous water infusion (1 ml/s) delivered manually to the mouth via a catheter-tipped syringe. During water swallowing, electrodes S-pIC (superior posterior insular cortex) and I-pIC (inferior posterior insular cortex) were stimulated individually with increasing stimulation intensities. Swallowing was recorded from the output of a laryngeal movement sensor.

Stimulation with electrode I-pIC at 4 mA was associated with a dysrhythmic pattern of swallowing as indicated by irregular and delayed swallows (Figure 2A). Moreover, at all intensity levels of stimulation with electrode I-pIC, the patient spontaneously reported a perception of a “stutter in swallowing”. In contrast, swallowing was not impaired during stimulation with S-pIC, regardless of stimulation intensity (Figure 2B). EEG recordings revealed that all epileptic spikes and seizures originated from the right inferior posterior insular cortex.

The tumor was surgically removed after invasive electroencephalographic monitoring and diagnosed as a ganglioglioma, a mostly benign neoplasm arising from ganglion cells. Gangliogliomas are often located in the medial and lateral temporal lobes, superior and middle temporal gyri, parahippocampal gyrus and amygdala [19], but can be found anywhere in the brain. Gangliogliomas are a frequent cause of intractable epilepsy [20]. The patient has been seizure free after removal of the ganglioglioma.

Conclusions

The insula is a phylogenetically old, as well as cytoarchitectonically and functionally diverse area, integrating information from numerous distinct regions of the

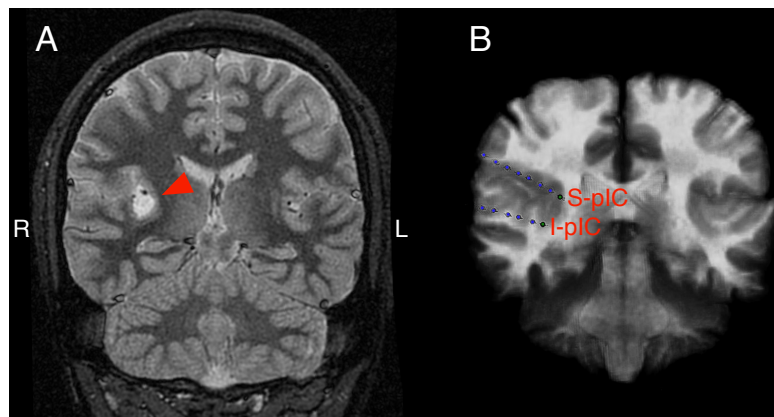


Figure 1 Tumor location and electrode placement. A) Coronal T2-weighted anatomical MRI showing a lesion with increased signal intensity in the right posterior insula marked by an arrowhead. This lesion was subsequently resected and was consistent with a ganglioglioma. B) Superimposed coronal CT and MRI images showing 3 implanted depth electrode strips in the right hemisphere. The top two lines were implanted in the insular cortex and the bottom line was inserted into the hippocampus and parahippocampus. Electrodes I-pIC (inferior posterior insular) and S-pIC (superior posterior insular cortex) were stimulated to investigate insular involvement in the cerebral control of swallowing.

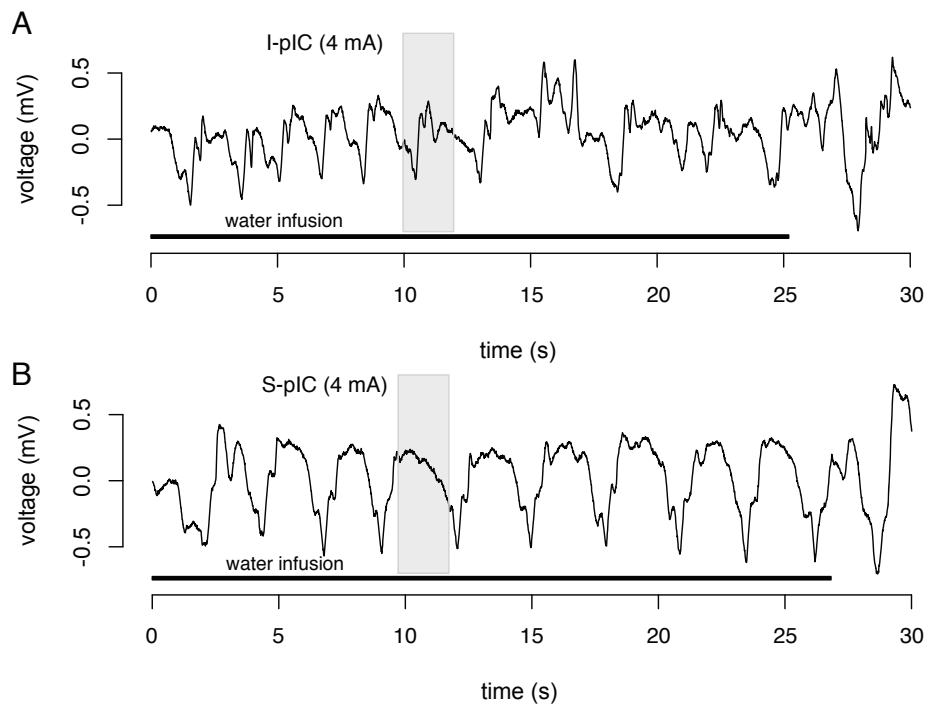


Figure 2 Recordings of swallowing-related laryngeal movements. Recording of laryngeal movements associated with water swallowing during electrical stimulation of electrode I-pIC (inferior posterior insular cortex, A) and S-pIC (superior posterior insular cortex, B), both at 4 mA. The grey area represents the electric stimulation (2 s), the black line the duration of continuous water infusion.

brain. Lesion studies [11,14] and functional brain imaging [12] have suggested that the anterior insular cortex is involved in the control of swallowing. The anterior insula has been implicated in the processing of visceral sensation from the pharynx [21], esophagus and gastrointestinal tract [22], vibrotactile stimulation [23], gustation [24], olfaction [25], and emotions such as disgust [26]. Other fMRI studies, however, reported swallow-related activation of the posterior insula [3], which is involved in autonomic regulation [18,27], including heart rate and respiration. Consistent with this, a meta-analysis of swallow-related brain imaging implicated both the anterior and posterior insula in swallowing [15].

Notwithstanding the possibility that slow tumor growth may have engaged compensatory swallowing mechanisms [28], the present finding that electrical stimulation of the right inferior posterior insula disrupts rhythmic water swallowing provides further evidence that the posterior insular cortex is involved in the neural circuitry underlying the control of swallowing.

Our results are consistent with previous cortical stimulation studies of the posterior insular cortex which resulted in visceral sensations and interference with swallowing [29]. Recently, detailed mapping of the insular cortex in epilepsy patients has been performed using electrical stimulation [30,31]. In 50 patients, electrical stimulation of the anterior and posterior insular cortex

elicited 125 clinical responses, 22% of which involved a viscerosensory effect. Half of these viscerosensory responses consisted of sensations of unpleasant laryngopharyngeal constriction [30]. In one patient, spontaneous seizures originated from the right anterior insular cortex and quickly propagated to the right posterior insular cortex [30]; these seizures began with strong laryngeal discomfort and an unpleasant sensation of constriction, similar to the viscerosensory sensations elicited by electrical stimulation [30]. Another insular mapping study, again using electrical stimulation in epilepsy patients, reported that insular stimulation evoked sensations of a pharyngeal constriction and a sensation of swallowing associated with mastication [31].

The strong representation of viscerosensory afferents in the insular cortex, as indicated by electrophysiological recordings [30] and functional neuroimaging data [21], as well as the importance of upper airway sensory input for the control of swallowing [32], raises the possibility that the disruption of water swallowing observed in our patient may have been related to oropharyngeal-laryngeal sensory alterations, such as discomfort or constriction, elicited by the electrical stimulation. Although our patient did not report isolated upper airway sensations during the stimulation protocol, it is conceivable that disruption of oropharyngeal-laryngeal sensory processing may have interfered with normal water swallowing and

created the impression of “stuttered swallowing”. Alternatively, disruption of water swallowing in the present case may have occurred due to an effect of insular stimulation on swallowing motor execution. Further studies are required to elucidate the mechanisms underlying the swallowing phenomena documented in this clinical case.

Acknowledgements

Written consent for publication was obtained from the patient.

Author details

¹School of Communication Sciences and Disorders, University of Western Ontario, London, Ontario, Canada. ²Department of Clinical Neurological Sciences, University of Western Ontario, London, Ontario, Canada. ³School of Kinesiology, University of Western Ontario, London, Ontario, Canada. ⁴Brain and Creativity Institute, University of Southern California, Los Angeles, California, USA. ⁵Department of Physiology and Pharmacology, University of Western Ontario, London, Ontario, Canada.

Authors' contributions

PS analyzed the data and drafted the manuscript. FAO and SWHW participated in data acquisition. JKS and SMM conceived the study, participated in its design and in data acquisition. VH participated in analysis and interpretation of the data. REM conceived and designed the study, participated in data acquisition and analysis and drafted the manuscript. All authors read and approved the final manuscript.

Competing interests

The authors declare that they have no competing interests.

Received: 29 September 2010 Accepted: 5 February 2011

Published: 5 February 2011

References

- Martin RE, Murray GM, Kemppainen P, Masuda Y, Sessle BJ: **Functional properties of neurons in the primate tongue primary motor cortex during swallowing.** *J Neurophysiol* 1997, **78**:1516-1530.
- Malandraki GA, Sutton BP, Perlman AL, Karampinos DC, Conway C: **Neural activation of swallowing and swallowing-related tasks in healthy young adults: an attempt to separate the components of deglutition.** *Hum Brain Mapp* 2009, **30**:3209-3226.
- Martin RE, MacIntosh BJ, Smith RC, Barr AM, Stevens TK, Gati JS, Menon RS: **Cerebral areas processing swallowing and tongue movement are overlapping but distinct: a functional magnetic resonance imaging study.** *J Neurophysiol* 2004, **92**:2428-2443.
- Humbert IA, Fitzgerald ME, McLaren DG, Johnson S, Porcuro E, Kosmatka K, Hind J, Robbins J: **Neurophysiology of swallowing: effects of age and bolus type.** *Neuroimage* 2009, **44**:982-991.
- Humbert IA, Robbins J: **Normal swallowing and functional magnetic resonance imaging: a systematic review.** *Dysphagia* 2007, **22**:266-275.
- Michou E, Hamdy S: **Cortical input in control of swallowing.** *Curr Opin Otolaryngol Head Neck Surg* 2009, **17**:166-171.
- Miller AJ: **The neurobiology of swallowing and dysphagia.** *Dev Disabil Res Rev* 2008, **14**:77-86.
- Daniels SK, Foundas AL, Iglesia GC, Sullivan MA: **Lesion site in unilateral stroke patients with dysphagia.** *J Stroke Cerebrovasc Dis* 1996, **6**:30-34.
- Broadley S, Croser D, Cottrell J, Creevy M, Teo E, Yiu D, Pathi R, Taylor J, Thompson PD: **Predictors of prolonged dysphagia following acute stroke.** *J Clin Neurosci* 2003, **10**:300-305.
- Stickler D, Gilmore R, Rosenbek JC, Donovan NJ: **Dysphagia with bilateral lesions of the insular cortex.** *Dysphagia* 2003, **18**:179-181.
- Daniels SK, Foundas AL: **The role of the insular cortex in dysphagia.** *Dysphagia* 1997, **12**:146-156.
- Hamdy S, Mikulis DJ, Crawley A, Xue S, Lau H, Henry S, Diamant NE: **Cortical activation during human volitional swallowing: an event-related fMRI study.** *Am J Physiol* 1999, **277**:G219-G225.
- Dziewas R, Sörös P, Ishii R, Chau W, Henningsen H, Ringelstein EB, Knecht S, Pantev C: **Neuroimaging evidence for cortical involvement in the preparation and in the act of swallowing.** *Neuroimage* 2003, **20**:135-144.
- Riecker A, Gastl R, Kühnlein P, Kassubeck J, Prosiel M: **Dysphagia due to unilateral infarction in the vascular territory of the anterior insula.** *Dysphagia* 2009, **24**:114-118.
- Sörös P, Inamoto Y, Martin RE: **Functional brain imaging of swallowing: an activation likelihood estimation meta-analysis.** *Hum Brain Mapp* 2009, **30**:2426-2439.
- Falsetti P, Acciai C, Palilla R, Bosi M, Carpinteri F, Zingarelli A, Pedace C, Lenzi L: **Oropharyngeal dysphagia after stroke: incidence, diagnosis, and clinical predictors in patients admitted to a neurorehabilitation unit.** *J Stroke Cerebrovasc Dis* 2009, **18**:329-335.
- Martin RE: **Neuroplasticity and swallowing.** *Dysphagia* 2009, **24**:218-229.
- Al-Otaibi F, Wong SW, Shoemaker JK, Parrent AG, Mirsattari SM: **The cardioinhibitory responses of the right posterior insular cortex in an epileptic patient.** *Stereotact Funct Neurosurg* 2010, **88**:390-397.
- Adachi Y, Yagishita A: **Gangliogliomas: Characteristic imaging findings and role in the temporal lobe epilepsy.** *Neuroradiology* 2008, **50**:829-834.
- Piao YS, Lu DH, Chen L, Liu J, Wang W, Liu L, Yu T, Wang YP, Li YJ: **Neuropathological Findings in Intractable Epilepsy: 435 Chinese Cases.** *Brain Pathol* 2010, **20**:902-908.
- Sörös P, Lalone E, Smith R, Stevens T, Theurer J, Menon RS, Martin RE: **Functional MRI of oropharyngeal air-pulse stimulation.** *Neurosci* 2008, **153**(4):1300-1308.
- Lotze M, Wietek B, Birbaumer N, Ehrhardt J, Grodd W, Enck P: **Cerebral activation during anal and rectal stimulation.** *Neuroimage* 2001, **14**:1027-1034.
- Sörös P, Marmurek J, Tam F, Baker N, Staines WR, Graham SJ: **Functional MRI of working memory and selective attention in vibrotactile frequency discrimination.** *BMC Neurosci* 2007, **8**:48 [http://www.biomedcentral.com/1471-2202/8/48].
- Small DM, Gregory MD, Mak YE, Gitelman D, Mesulam MM, Parrish T: **Dissociation of neural representation of intensity and affective valuation in human gustation.** *Neuron* 2003, **39**:701-711.
- Cerf-Ducastel B, Murphy C: **fMRI activation in response to odorants orally delivered in aqueous solutions.** *Chem Senses* 2001, **26**:625-637.
- Jabbi M, Bastiaansen J, Keysers C: **A common anterior insula representation of disgust observation, experience and imagination shows divergent functional connectivity pathways.** *PLoS One* 2008, **3**: e2939.
- Oppenheimer SM, Gelb A, Girvin JP, Hachinski VC: **Cardiovascular effects of human insular cortex stimulation.** *Neurology* 1992, **42**:1727-1732.
- Wong SW, Jong L, Bandur D, Bihari F, Yen YF, Takahashi AM, Lee DH, Steven DA, Parrent AG, Pigott SE, Mirsattari SM: **Cortical reorganization following anterior temporal lobectomy in patients with temporal lobe epilepsy.** *Neurology* 2009, **73**:518-525.
- Penfield W, Faulk ME: **The insula; further observations on its function.** *Brain* 1955, **78**:445-470.
- Isnard J, Guénot M, Sindou M, Mauguière F: **Clinical manifestations of insular lobe seizures: a stereo-electroencephalographic study.** *Epilepsia* 2004, **45**:1079-1090.
- Afif A, Minotti L, Kahane P, Hoffmann D: **Anatomofunctional organization of the insular cortex: A study using intracerebral electrical stimulation in epileptic patients.** *Epilepsia* 2010, **51**:2305-2315.
- Teismann IK, Steinstraeter O, Stoelckigt K, Suntrup S, Wollbrink A, Pantev C, Dziewas R: **Functional oropharyngeal sensory disruption interferes with the cortical control of swallowing.** *BMC Neurosci* 2007, **8**:62.

Pre-publication history

The pre-publication history for this paper can be accessed here:
<http://www.biomedcentral.com/1471-2377/11/20/prepub>

doi:10.1186/1471-2377-11-20

Cite this article as: Sörös et al.: Stuttered swallowing: Electric stimulation of the right insula interferes with water swallowing. A case report. *BMC Neurology* 2011 **11**:20.