

Original Articles

Common chronic conditions do not affect performance of cell cycle arrest biomarkers for risk stratification of acute kidney injury

Michael Heung¹, Luis M. Ortega², Lakhmir S. Chawla³, Richard G. Wunderink⁴, Wesley H. Self⁵, Jay L. Koyner⁶, Jing Shi⁷ and John A. Kellum⁸ for the Sapphire and Topaz Investigators^{*}

¹Division of Nephrology, Department of Medicine, University of Michigan, Ann Arbor, MI, USA, ²Division of Nephrology and Hypertension, Department of Medicine, Allegheny General Hospital, Pittsburgh, PA, USA, ³Department of Anesthesia and Medicine, George Washington University, Washington, DC, USA, ⁴Division of Pulmonary and Critical Care Medicine, Department of Medicine, Northwestern University Feinberg School of Medicine, Chicago, IL, USA, ⁵Department of Emergency Medicine, Vanderbilt University, Nashville, TN, USA, ⁶Section of Nephrology, Department of Medicine, University of Chicago, Chicago, IL, USA, ⁷Walker Bioscience, Carlsbad, CA, USA and ⁸Center for Critical Care Nephrology, Department of Critical Care Medicine, University of Pittsburgh School of Medicine and University of Pittsburgh Medical Center, Pittsburgh, PA, USA

Correspondence and offprint requests to: John A. Kellum; E-mail: kellumja@upmc.edu

^{*}A complete list of Sapphire and Topaz investigators and support personnel is available online (<http://www.ccm.pitt.edu/sapphire-investigators> and <http://www.ccm.pitt.edu/topaz-investigators>).

ABSTRACT

Background. Identification of acute kidney injury (AKI) can be challenging in patients with underlying chronic disease, and biomarkers often perform poorly in this population. In this study we examined the performance characteristics of the novel biomarker panel of urinary tissue inhibitor of metalloproteinases-2 (TIMP2) and insulin-like growth factor-binding protein 7 ([IGFBP7]) in patients with a variety of comorbid conditions.

Methods. We analyzed data from two multicenter studies of critically ill patients in which [TIMP2]•[IGFBP7] was validated for prediction of Kidney Disease: Improving Global Outcomes (KDIGO) Stage 2 or 3 AKI within 12 h. We constructed receiver operating characteristic (ROC) curves for AKI prediction both overall and by comorbid conditions common among patients with AKI, including diabetes mellitus, congestive heart failure (CHF) and chronic kidney disease (CKD).

Results. In the overall cohort of 1131 patients, 139 (12.3%) developed KDIGO Stage 2 or 3 AKI. [TIMP2]•[IGFBP7] was significantly higher in AKI versus non-AKI patients, both overall and within each comorbidity subgroup. The AUC for [TIMP2]•[IGFBP7] in predicting AKI was 0.81 overall. Higher AUC was noted in patients with versus without CHF (0.89 versus 0.79; $P = 0.026$) and CKD (0.91 versus 0.80; $P = 0.024$).

Conclusions. We observed no significant impairment in the performance of cell cycle arrest biomarkers due to the presence of chronic comorbid conditions.

Keywords: acute kidney injury, biomarkers, chronic kidney disease

INTRODUCTION

Acute kidney injury (AKI) occurs in up to 20% of hospitalized patients and is associated with high morbidity and mortality [1–4]. Although management of patients with AKI remains largely supportive, limiting further renal damage when injury occurs is an important goal [5], and it logically follows that

early diagnosis and recognition of AKI may provide the best opportunity to attenuate ongoing injury. The ability to accurately identify patients at risk for AKI could inform clinical decision-making, such as through emphasizing resuscitation, more stringent avoidance of nephrotoxic exposures and more attention to appropriate medication dosing. Thus, an important goal of AKI research has been to develop biomarkers to accurately identify the onset of renal injury or predict AKI risk earlier than current methods allow. However, AKI biomarkers may have variable performance in the setting of comorbid disease. For example, a recent study demonstrated markedly inferior test characteristics for six biomarkers in AKI patients with pre-existing chronic kidney disease (CKD) [6]. This is particularly problematic, as CKD is a well-recognized risk factor for AKI [7].

We recently reported data from two multicenter studies of critically ill patients (the Sapphire and Topaz studies) where a panel consisting of urinary tissue inhibitor of metalloproteinases-2 (TIMP2) and insulin-like growth factor-binding protein 7 (IGFBP7), both markers associated with cell cycle arrest, was validated for risk stratification for moderate–severe AKI [8, 9]. Urinary $[TIMP2] \cdot [IGFBP7] > 0.3 \text{ (ng/mL)}^2/1000$ had $>90\%$ sensitivity in predicting the development of moderate–severe AKI within 12 h [9]. In contrast to other novel AKI biomarkers that reflect renal cell injury or decline in renal function, these markers are believed to reflect the renal tubular epithelial response to cellular stress from injury [10, 11]. $[TIMP2] \cdot [IGFBP7]$ was found to have superior performance characteristics for AKI risk stratification, as assessed by area under the receiver operating characteristics (ROC) curve (AUC), compared with other markers such as neutrophil gelatinase-associated lipocalin (NGAL), kidney injury molecule 1 (KIM-1), cystatin C and interleukin-18 (IL-18) [8]. However, although patients with CKD and other chronic conditions were enrolled in these trials, we have not previously analyzed test performance when restricted to these patients.

Here we pool data from two trials of critically ill subjects at high risk for AKI [8, 9] and examine the impact of various comorbidities [e.g. CKD, congestive heart failure (CHF)] on the performance characteristics of cell cycle arrest markers for the prediction of moderate–severe [Kidney Disease: Improving Global Outcomes (KDIGO) Stage 2 or 3] AKI in critically ill patients.

MATERIALS AND METHODS

Patient population

We conducted a secondary analysis of data collected from two multicenter clinical trials used to validate $[TIMP2] \cdot [IGFBP7]$ in AKI, the Sapphire and Topaz studies [8, 9]. The Sapphire study enrolled 744 critically ill adult (>21 years) patients who were at risk for development of AKI. In the Topaz study, 420 critically ill adult patients were enrolled, with similar inclusion/exclusion criteria to the Sapphire study. Specifically, subjects in both studies were required to have evidence of significant pulmonary [respiratory Sequential Organ Failure Assessment (SOFA) score ≥ 2] or cardiovascular (cardiac SOFA score ≥ 1) dysfunction and could not yet have met criteria for moderate–severe AKI (KDIGO Stage 2 or 3). Patient recruitment occurred within 24 h of

intensive care unit (ICU) admission. More detailed descriptions of both studies have previously been published [8, 9]. Both the Sapphire and Topaz studies were approved by the Western Institutional Review Board (Olympia, WA, USA) as well as individual site investigational review boards if required and written informed consent was obtained from all subjects (or their legally authorized representatives).

Data collection

Clinical data collection included patient demographics, reason for ICU admission, Acute Physiology and Chronic Health Evaluation (APACHE) III score variables, hourly urine output and laboratory testing results. Comorbid conditions were determined based on review of available medical records and based on diagnostic codes. Estimated glomerular filtration rate (eGFR) was determined using the Chronic Kidney Disease Epidemiology Collaboration (CKD-EPI) equation; patients with missing or unknown race were considered not to be black. Each site extracted data from clinical sources and input the data into an online electronic case report form in a deidentified password-protected dataset. Study data were stored at an independent server site (Medidata Solutions, New York, NY, USA).

The primary outcome was moderate–severe AKI as defined by KDIGO criteria for Stage 2 or 3 AKI developing within 12 h of enrollment. In the Topaz study, final determination of AKI was adjudicated by an expert panel of three independent nephrologists who were blinded to biomarker results.

Laboratory testing

Urine and blood samples were collected and processed using standard methods. Sample supernatants were frozen within 2 h of collection and stored at -70°C before batch transport to a central lab for analysis. Samples were thawed immediately before analysis. Testing for $[TIMP2] \cdot [IGFBP7]$ was performed using a clinical immunoassay (NEPHROCHECK Test and ASTUTE140 Meter; Astute Medical, San Diego, CA, USA), and lab technicians performing the testing were blinded to patient outcomes. For subjects recruited in the Sapphire study, $[TIMP2] \cdot [IGFBP7]$ testing was performed at Astute Medical laboratories; in the Topaz study, testing was performed in triplicate at three independent laboratories (University of California at San Diego, San Diego, CA, USA; University of Louisville, Louisville, KY, USA; and ARUP Laboratories, Salt Lake City, UT, USA). Test results for $[TIMP2] \cdot [IGFBP7]$ are uniformly reported in units of $(\text{ng/mL})^2/1000$ throughout the text.

Statistical methods

Continuous variables were compared between AKI groups using the Wilcoxon rank sum test or *t*-test. Categorical variables were compared between AKI groups using the χ^2 test. To assess the effect of comorbidity on levels of $[TIMP2] \cdot [IGFBP7]$, we performed multiple linear regression analysis for each comorbidity where the response variable is rank transformed $[TIMP2] \cdot [IGFBP7]$; the explanatory variables are AKI status, comorbidity status and the interaction between them. AUC calculation and testing for differences in two AUCs were based on the DeLong method, using the R package ‘pROC’ [12]. When necessary, P-values were adjusted for multiple testing by the

Benjamini–Hochberg method. A multivariate logistic regression model was constructed to predict the primary outcome of AKI accounting for comorbid conditions. Backward selection was used to eliminate variables with P-values <0.10 and arrive at the final model. Statistical analyses were performed using R version 3.1.0. (R Foundation, <http://www.r-project.org/>) and SAS 9.3 (SAS Institute, Cary, NC, USA).

RESULTS

Patient characteristics

Figure 1 shows the flow of patient recruitment from both the Sapphire and Topaz studies. A total of 1164 patients were recruited; in the Sapphire study, 21 (2.8%) patients were excluded after enrollment, while 12 (2.9%) patients were excluded in the Topaz study. Patient characteristics were similar between the two studies, as reported previously [13]. The final cohort consisted of 1131 patients, of whom 139 (12.3%) developed moderate–severe AKI (KDIGO Stage 2 or 3) [5]. For simplicity, throughout the manuscript AKI refers to KDIGO Stage 2 or 3 AKI, while no AKI indicates either no AKI or Stage 1 AKI.

Patient characteristics stratified by AKI status are shown in Table 1. A greater percentage of patients who developed AKI had preexisting diabetes and hypertension compared with patients without AKI. The percentage of patients with underlying CKD was similar between AKI groups, but median enrollment serum creatinine was higher in patients who developed AKI.

[TIMP2]•[IGFBP7] performance

In the overall cohort, median [TIMP2]•[IGFBP7] was significantly higher in AKI patients compared with non-AKI patients {1.5 [interquartile range (IQR) 0.6–2.8] versus 0.3 [IQR 0.1–0.7]; $P < 0.001$ }. These values were consistent across

a variety of comorbid states and remained statistically different between AKI and non-AKI patients (Figure 2).

In the cohort of 97 patients with CKD, the AUC for [TIMP2]•[IGFBP7] prediction of moderate–severe AKI was 0.91 (95% CI 0.85–0.97) (Figure 3). The relative risk for AKI with a [TIMP2]•[IGFBP7] value above the previously validated cutoff of 0.3 was 32.4 (95% CI 3.7–284.8). There were 326 patients with diabetes mellitus in the overall study cohort. [TIMP2]•[IGFBP7] testing yielded an AUC of 0.83 (95% CI 0.77–0.89) (Figure 4), and a value >0.3 was associated with a relative risk for moderate–severe AKI of 12.8 (95% CI 4.1–40.1). In recognition of the overlap between the CKD and diabetic patient populations, a sensitivity analysis was performed focusing on patients with either CKD or diabetes alone. For patients with diabetes and not CKD ($n = 273$), the AUC was 0.82 (95% CI 0.75–0.88). In those with CKD but not diabetes ($n = 47$), the AUC was 0.95 (95% CI 0.86–1.00).

To further assess the impact of comorbidity on [TIMP2]•[IGFBP7], multiple linear regression models were performed with [TIMP2]•[IGFBP7] as a function of comorbidities, adjusted for AKI status. CKD was found to have a statistically significant effect on [TIMP2]•[IGFBP7] in non-AKI patients ($P = 0.009$) but not in AKI patients. Notably, in non-AKI patients, the direction of effect was such that the presence of CKD was associated with lower [TIMP2]•[IGFBP7]. The interactions between each comorbidity and AKI status were not significant.

To examine the predictive ability of [TIMP2]•[IGFBP7] in different comorbid states, a multivariate logistic regression model for AKI was developed that included all comorbid states and their interaction terms with [TIMP2]•[IGFBP7] (as well as age, race, sex, body mass index, enrollment creatinine and nonrenal SOFA score). Overall, [TIMP2]•[IGFBP7] remained a significant predictor for AKI at 12 h [OR 5.0 (95% CI 2.8–8.8) per unit increase in $\log_{10}([TIMP2]•[IGFBP7])$]. ROC curves were

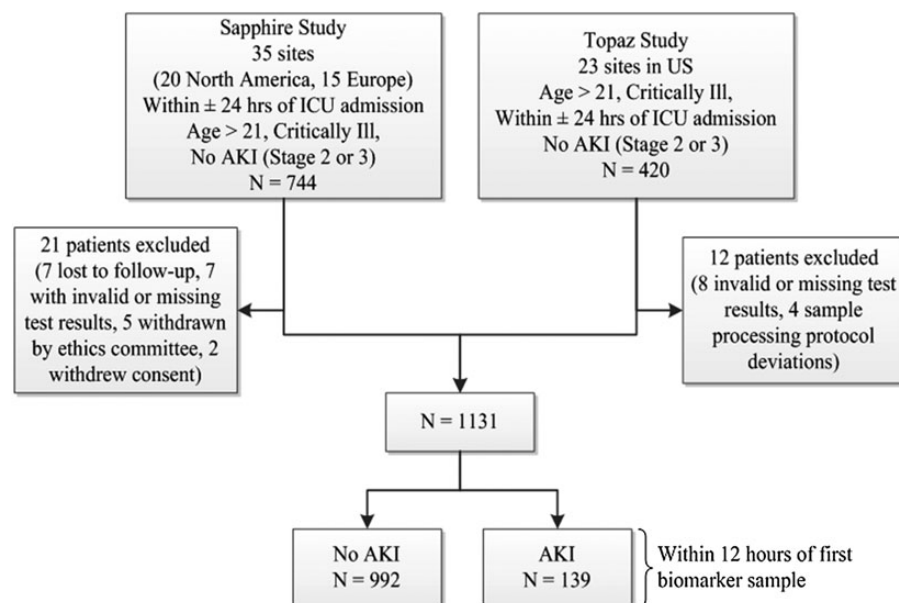


FIGURE 1: Diagram of subject recruitment and enrollment in the Sapphire and Topaz studies, and derivation of the final cohort for this study. AKI was defined as moderate to severe (KDIGO Stage 2–3) AKI.

Table 1. Patients' characteristics, stratified by AKI status

	No AKI or Stage 1	AKI Stage 2 or 3	P-value
All patients	992	139	
Male	589 (59%)	74 (53%)	0.169
Age, years	62 (16)	65 (15)	0.081
Body mass index, kg/m ²	27 (24–32)	31 (26–38)	<0.001
Race			0.948
Black	127 (13%)	16 (12%)	
White	794 (80%)	113 (81%)	
Other/unknown	70 (7%)	10 (7%)	
Medical history			
Chronic kidney disease	84 (8%)	13 (9%)	0.746
Diabetes mellitus	274 (28%)	52 (37%)	0.021
Congestive heart failure	174 (18%)	32 (23%)	0.127
Coronary artery disease	296 (30%)	40 (29%)	0.843
Hypertension	599 (60%)	101 (73%)	0.005
Chronic obstructive pulmonary disease	213 (21%)	23 (17%)	0.220
Admitted to ICU from			0.244
ED	380 (38%)	62 (45%)	
Floor	175 (18%)	18 (13%)	
OR	275 (28%)	30 (22%)	
Other hospital	140 (14%)	25 (18%)	
Other ICU	10 (1%)	1 (1%)	
Unknown	12 (1%)	3 (2%)	
Reason for ICU admission			
Respiratory	447 (45%)	67 (48%)	0.525
Surgery	340 (34%)	35 (25%)	0.034
Cardiovascular	345 (35%)	58 (42%)	0.130
Sepsis	192 (19%)	40 (29%)	0.013
Neurological	112 (11%)	10 (7%)	0.188
Trauma	89 (9%)	10 (7%)	0.630
Other	207 (21%)	40 (29%)	0.038
Time from ICU admission to biomarker sample collection, hours	16 (7–20)	16 (11–20)	0.427
Non-renal APACHE III	57 (43–78)	69 (50–87)	0.001
Enrollment eGFR ^a , mL/min/1.73m ²	82 (55–101)	52 (31–84)	<0.001
Enrollment serum creatinine ^b , mg/dL	0.9 (0.7–1.2)	1.3 (0.9–1.8)	<0.001
6-h cumulative urine output at enrollment ^c , mL	424 (280–705)	185 (115–303)	<0.001
Radiocontrast agents ^d	354 (36%)	47 (34%)	0.706
Blood transfusions ^e			
PRBC	283 (29%)	32 (23%)	0.190
Platelets	98 (10%)	19 (14%)	0.180
Fresh frozen plasma	139 (14%)	25 (18%)	0.246
Albumin	143 (14%)	25 (18%)	0.255
Cryoprecipitate	24 (2%)	2 (1%)	0.761

Categorical variables are shown as *n* (%) and numerical as mean (standard deviation) or median (interquartile range).

ED, emergency department; OR, operating room; ICU, intensive care unit; eGFR, estimated glomerular filtration rate.

^aCalculated from enrollment serum creatinine using the CKD-EPI equation.

^bValue from medical record closest to time of enrollment.

^c15% of no AKI or Stage 1 and 12% of AKI Stage 2 or 3 did not have urine output data for 6 h prior to enrollment.

^dNumber of patients receiving intravenous or intra-arterial contrast administered within 5 days prior to and including the day of enrollment.

^eNumber of patients receiving blood products within 5 days prior to and including the day of enrollment.

created for subpopulations stratified by each comorbid condition, and the resultant AUC values are shown in Figure 5. The majority of AUC values remained >0.80 and did not differ statistically between patients with and without coronary artery disease (CAD), chronic obstructive pulmonary disease (COPD), diabetes or hypertension. [TIMP2]•[IGFBP7] in patients with CHF had a significantly higher AUC compared with those without CHF (0.89 versus 0.79; *P* = 0.026), and a similar relationship was seen with [TIMP2]•[IGFBP7] in CKD versus non-CKD patients (0.91 versus 0.80; *P* = 0.024).

The sensitivity and specificity of [TIMP2]•[IGFBP7] at both the 0.3 and 2.0 cutoffs were examined by comorbidity

subgroup, and values are presented in Table 2. There was no significant difference in sensitivity or specificity across all subgroups for either cutoff.

DISCUSSION

Cell cycle arrest markers have recently emerged as important tools to predict moderate–severe AKI. In this study, we explored the impact of comorbidity on the performance characteristics of these biomarkers. Overall, the biomarkers performed equally well in distinguishing AKI from non-AKI in

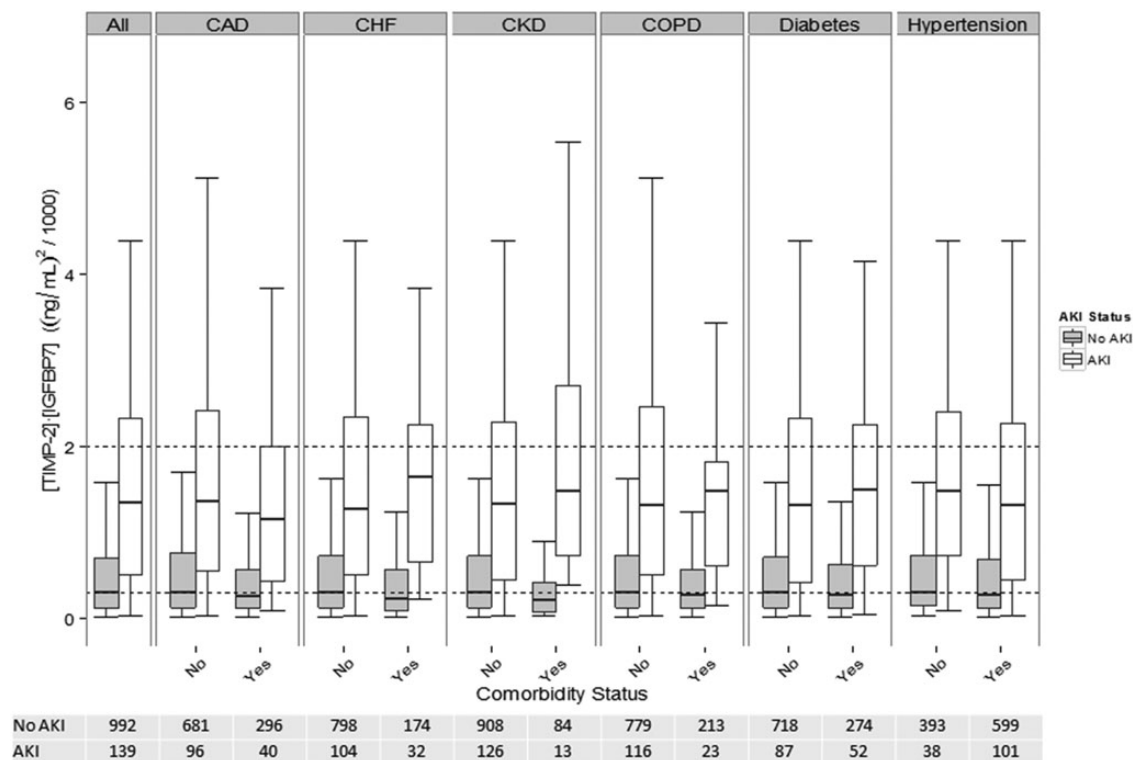


FIGURE 2: Boxplots of [TIMP2]•[IGFBP7] values across different comorbidity subpopulations by acute kidney injury status. Boxes and whiskers show interquartile ranges (IQRs) and total observed ranges, censored by 1.5 times the IQR. Horizontal lines within the boxes show the medians. Dotted lines refer to the 0.3 and 2.0 cutoffs, for illustrative purposes. Gray and white shading of the boxes indicate the absence or presence of AKI within 12 h. [TIMP2]•[IGFBP7] values were significantly higher in AKI patients than in non-AKI patients for all comparisons shown ($P < 0.001$ for all). CAD, coronary artery disease; CHF, congestive heart failure; CKD, chronic kidney disease; COPD, chronic obstructive pulmonary disease.

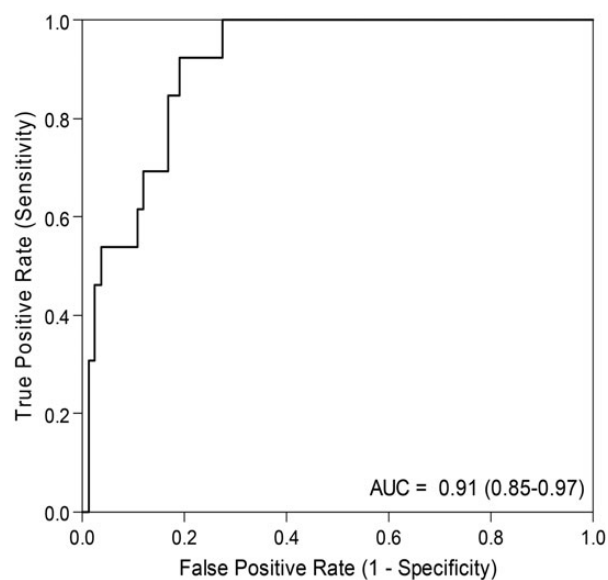


FIGURE 3: ROC curve of [TIMP2]•[IGFBP7] for the prediction of moderate-severe AKI in patients with CKD.

the presence or absence of a variety of comorbid conditions, including in patients with diabetes and CKD, who are at increased risk for AKI. Although the subpopulations with each comorbid condition were relatively small, these preliminary findings lend

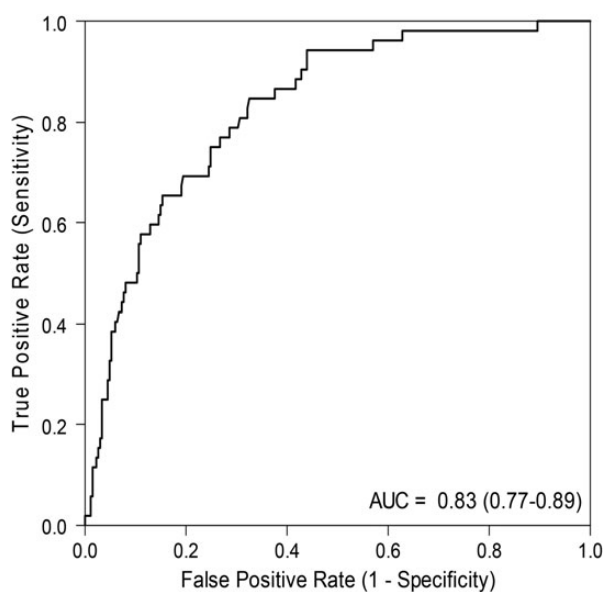


FIGURE 4: ROC curve of [TIMP2]•[IGFBP7] for the prediction of moderate-severe AKI in patients with diabetes mellitus.

support for broad applicability of cell cycle arrest markers in patients with a variety of comorbidities.

We chose to examine the influence of comorbidities on biomarker performance for a number of reasons. First, patients

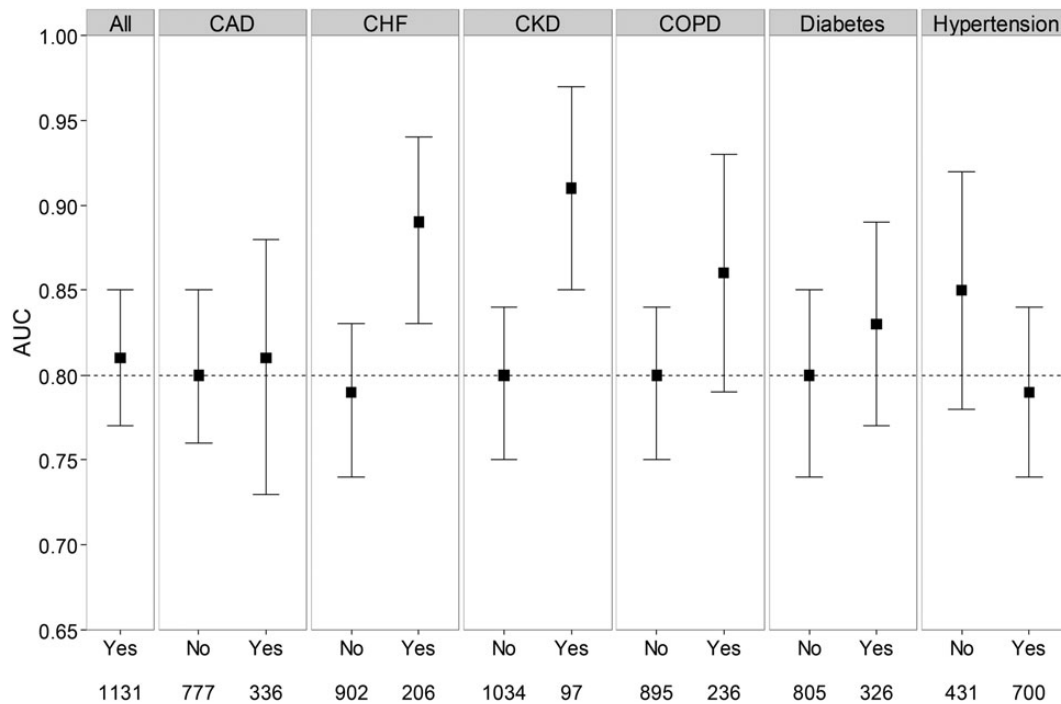


FIGURE 5: AUC assessing [TIMP2]•[IGFBP7] for the prediction of Stage 2 or 3 AKI within 12 h, stratified by comorbid conditions. Error bars show the 95% CI of the AUC values. Horizontal dashed line shows an AUC of 0.80 for illustrative purposes.

Table 2. Sensitivity and specificity of [TIMP2]•[IGFBP7] for moderate–severe AKI at both the 0.3 and 2.0 cutoffs, stratified by comorbidity subgroups

Comorbidity	Sensitivity or specificity	0.3 Cutoff			2.0 Cutoff		
		Without comorbidity (%)	With comorbidity (%)	P-value	Without comorbidity (%)	With comorbidity (%)	P-value
Coronary artery disease (n = 336)	Sensitivity	90	88	0.92	41	33	0.661
	Specificity	49	52	0.533	94	95	0.784
Congestive heart failure (n = 206)	Sensitivity	88	97	0.561	37	50	0.648
	Specificity	49	55	0.467	94	95	0.784
Chronic kidney disease (n = 97)	Sensitivity	88	100	0.698	40	31	0.678
	Specificity	49	63	0.097	94	98	0.671
Chronic obstructive pulmonary disease (n = 236)	Sensitivity	88	96	0.698	41	30	0.661
	Specificity	49	53	0.531	93	97	0.194
Diabetes mellitus (n = 326)	Sensitivity	86	94	0.561	40	38	0.86
	Specificity	50	51	0.723	94	95	0.784
Hypertension (n = 700)	Sensitivity	89	89	1	50	36	0.648
	Specificity	49	51	0.531	94	94	0.784

with various comorbidities (e.g. CKD, diabetes, CHF) are among the highest risk for developing AKI, and therefore demonstration of the utility of a biomarker in these populations is important. Second, previous AKI biomarker studies have reported variable performance in different clinical settings, and some of that variation may be attributable to patient comorbidity characteristics. Cell cycle arrest markers could theoretically be elevated due to a variety of stress states and not specifically in response to AKI. Understanding the limitations of biomarkers in different patient populations is critical to their appropriate application to the clinical setting. Indeed, a recent editorial concluded that ‘unscrutinized use of these [novel AKI] biomarkers may distract from adequate clinical evaluation and carries the risk of worse instead of better patient outcome’ [14].

Prior studies of other novel AKI biomarkers have specifically noted the influence of baseline renal impairment on diagnostic characteristics. Endre *et al.* [6] examined several biomarkers, including NGAL, IL-18 and KIM-1, in a prospective study of 529 ICU patients. They found that biomarker performance depended on baseline renal function as well as the amount of time after the renal insult, with AUC values for AKI diagnosis at 6–12 h ranging from 0.69–0.72 in patients without CKD (eGFR \geq 60 mL/min) to only 0.39–0.61 in patients with CKD [6]. Koyner *et al.* [15] also reported differences in AKI biomarker performance when stratifying by the presence of CKD, concluding that urinary NGAL and KIM-1 ‘did not display the ability to predict future development of AKI in those with an eGFR <60 mL/min’. Other studies have shown that NGAL

levels rise with decreasing eGFR in the absence of AKI [16, 17]. Similarly, KIM-1 levels are elevated in many different types of kidney disease other than AKI and appear correlated to chronic inflammation and fibrosis [18]. While initially identified as AKI biomarkers, both NGAL and KIM-1 are now also being explored as markers for CKD and CKD progression [17, 19, 20]. Not surprisingly, a workgroup from the Acute Dialysis Quality Initiative has identified biomarker performance in patients with normal versus abnormal renal function as an important area for research needed to bring biomarkers closer to clinical utility [21].

In this study, the AUC of [TIMP2]•[IGFBP7] was significantly greater in patients with CKD compared with those without CKD. While these results are encouraging, it should be noted that there were a limited number of CKD patients in the overall cohort, and only 13 CKD patients developed AKI. Nevertheless, several theoretical explanations exist for why cell cycle arrest markers for AKI may have better diagnostic performance in CKD patients compared with other biomarkers. Patients with CKD have less renal reserve and may be more susceptible to insults and/or more likely to overtly manifest injury compared with patients with intact renal function, where subclinical injury can occur. Indeed, recent studies have established the concept of subclinical AKI whereby renal injury has occurred (biomarker positive), but in the absence of a significant increase in creatinine (creatinine criteria negative) [22], CKD patients may be less likely to fall into this gray zone and have 'false positive' results with biomarkers. Another consideration is that cell cycle arrest markers may be a more specific response to renal injury than the release of other biomarkers, which may reflect more chronic processes such as inflammation and fibrosis. Part of the clinical challenge with respect to AKI is that a renal signal follows a variety of discordant insults to the kidney, including sepsis, toxicity and muscle damage to name but a few. Thus the suggestion that the expression of markers of cell cycle arrest represents a uniform response to a heterogeneous insult is enticing.

Diabetes mellitus is another important risk factor for AKI and therefore another important population in which to evaluate AKI biomarkers. As with CKD, previous AKI biomarker studies have had variable results in diabetic patients. Ahmed and Hamed [23] recently evaluated urinary KIM-1 levels in diabetic patients without AKI. Compared with healthy controls, male diabetics had greater than five times the levels of KIM-1; in females, the difference was >10-fold. Sabbisetti *et al.* [24] note that KIM-1 levels were elevated in post-cardiac surgery diabetic patients without AKI compared with controls, although not to the same degree as patients that did develop AKI. In our study, [TIMP2]•[IGFBP7] performance was fairly constant in the diabetic versus non-diabetic populations, with AUC values ranging from 0.80 to 0.83. Our findings suggest that the performance of cell cycle arrest markers is not compromised in patients with diabetes.

Some limitations of this study are worth noting. As a post hoc analysis, the original study data were not powered to examine biomarker performance in subpopulations. Despite pooling, the subpopulations of interest remained relatively small (e.g. 97 patients with CKD), and these findings are not

definitive evidence of equivalent performance, although they represent the largest cohort currently available for study. Our results would be strengthened by confirmation in larger, prospective studies. In addition, we did not have albuminuria data for the majority of patients and therefore cannot speculate as to whether biomarker performance might be affected by the presence of albuminuria.

In summary, we examined the performance of cell cycle arrest biomarkers for moderate to severe AKI in patients with various common comorbid conditions. In patients with diabetes, who are at elevated risk for AKI, we found no significant decrease in the ability of urinary [TIMP2]•[IGFBP7] to predict AKI risk. In a small cohort of CKD patients, another high-risk group for AKI, the biomarker panel showed superior AUCs compared with non-CKD patients. Thus, our results suggest no significant impairment in the performance of cell cycle arrest biomarkers due to chronic comorbid conditions.

AUTHORS' CONTRIBUTIONS

J.S. had full access to all of the data in the study and takes responsibility for the integrity of the data and the accuracy of the data analysis. J.A.K. and L.S.C. designed and conducted the study. Data collection and interpretation: all authors reviewed the data and participated in discussions related to interpretation. Preparation, review or approval of the manuscript: M.H., L.M.O., L.S.C., J.S. and J.A.K. wrote the paper. All authors reviewed and edited the paper and have seen and approved the final draft.

ACKNOWLEDGEMENTS

The authors acknowledge many staff, coordinators and investigators whose work was essential for completion of this study. Results of this study were presented in abstract form at the 2015 International Conference on Advances in Critical Care Nephrology (CRRN 2015), San Diego, CA, USA. Funding for this study was provided by Astute Medical, San Diego, CA, USA.

CONFLICT OF INTEREST STATEMENT

M.H., L.M.O. and R.G.W. report no related interests. L.S.C. is employed by La Jolla Pharmaceutical Company and has received consulting fees from Astute Medical, Alere Medical, AM Pharma and Baxter Medical and has licensed unrelated technologies through George Washington University to Astute Medical. W.H.S. has received consulting fees from BioFire Diagnostics, Venaxis and Abbott Point of Care and has received research funding from Astute Medical, Pfizer, BRAHMS, bio-Merieux, Venaxis and Sphingotec. J.L.K. has received research funding from Astute Medical, Abbott, NxStage and Satellite Health Care and has received consulting fees from Pfizer and Astute Medical. J.S. has received consulting fees from Astute Medical. J.A.K. has received consulting fees from Astute

Medical, Alere, Aethlon, AM Pharma, Cytosorbents, Bard, Fresenius, Baxter, Abbott Diagnostics and Spectral Diagnostics. J.A.K. has also received research grants from Astute Medical, Alere, Cytosorbents, Bard, Baxter and Spectral Diagnostics and has licensed unrelated technologies through the University of Pittsburgh to Astute Medical and Cytosorbents.

REFERENCES

1. Uchino S, Kellum JA, Bellomo R *et al.* Acute renal failure in critically ill patients: a multinational, multicenter study. *JAMA* 2005; 294: 813–818
2. Susantitaphong P, Cruz DN, Cerda J *et al.* World incidence of AKI: a meta-analysis. *Clin J Am Soc Nephrol* 2013; 8: 1482–1493
3. LaFrance JP, Miller DR. Acute kidney injury associates with increased long-term mortality. *J Am Soc Nephrol* 2010; 21: 345–352
4. Bagshaw SM, Laupland KB, Doig CJ *et al.* Prognosis for long-term survival and renal recovery in critically ill patients with severe acute renal failure: a population-based study. *Crit Care* 2005; 9: R700–R709
5. Kellum JA, Lameire N, Aspelin P *et al.* KDIGO clinical practice guideline for acute kidney injury. *Kidney Int* 2012; 2: 1–138
6. Endre ZH, Pickering JW, Walker RJ *et al.* Improved performance of urinary biomarkers of acute kidney injury in the critically ill by stratification for injury duration and baseline renal function. *Kidney Int* 2011; 79: 1119–1130
7. Chawla LS, Eggers PW, Star RA *et al.* Acute kidney injury and chronic kidney disease as interconnected syndromes. *N Engl J Med* 2014; 371: 58–66
8. Kashani K, Al-Khafaji A, Ardiles T *et al.* Discovery and validation of cell cycle arrest biomarkers in human acute kidney injury. *Crit Care* 2013; 17: R25
9. Bihorac A, Chawla LS, Shaw AD *et al.* Validation of cell-cycle arrest biomarkers for acute kidney injury using clinical adjudication. *Am J Respir Crit Care Med* 2014; 189: 932–939
10. Yang QH, Liu DW, Long Y *et al.* Acute renal failure during sepsis: potential role of cell cycle regulation. *J Infect* 2009; 58: 459–464
11. Devarajan P. Update on mechanisms of ischemic acute kidney injury. *J Am Soc Nephrol* 2006; 17: 1503–1520
12. Robin X, Turck N, Hainard A *et al.* pROC: an open-source package for R and S+ to analyze and compare ROC curves. *BMC Bioinformatics* 2011; 12: 77
13. Hoste EA, McCullough PA, Kashani K *et al.* Derivation and validation of cutoffs for clinical use of cell cycle arrest biomarkers. *Nephrol Dial Transplant* 2014; 29: 2054–2061
14. Lameire NH, Vanholder RC, Van Biesen WA. How to use biomarkers efficiently in acute kidney injury. *Kidney Int* 2011; 79: 1047–1050
15. Koyner JL, Vaidya VS, Bennett MR *et al.* Urinary biomarkers in the clinical prognosis and early detection of acute kidney injury. *Clin J Am Soc Nephrol* 2010; 5: 2154–2165
16. Bolognani D, Lacquaniti A, Coppolino G *et al.* Neutrophil gelatinase-associated lipocalin (NGAL) and progression of chronic kidney disease. *Clin J Am Soc Nephrol* 2009; 4: 337–344
17. Malyszko J, Malyszko JS, Bachorzewska-Gajewska H *et al.* Neutrophil gelatinase-associated lipocalin is a new and sensitive marker of kidney function in chronic kidney disease patients and renal allograft recipients. *Transplant Proc* 2009; 41: 158–161
18. van Timmeren MM, van den Heuvel MC, Bailly V *et al.* Tubular kidney injury molecule-1 (KIM-1) in human renal disease. *J Pathol* 2007; 212: 209–217
19. Gardiner L, Akintola A, Chen G *et al.* Structural equation modeling highlights the potential of Kim-1 as a biomarker for chronic kidney disease. *Am J Nephrol* 2012; 35: 152–163
20. Lin Q, Chen Y, Lv J *et al.* Kidney injury molecule-1 expression in IgA nephropathy and its correlation with hypoxia and tubulointerstitial inflammation. *Am J Physiol Renal Physiol* 2014; 306: F885–F895
21. McCullough PA, Shaw AD, Haase M *et al.* Diagnosis of acute kidney injury using functional and injury biomarkers: workgroup statements from the tenth Acute Dialysis Quality Initiative Consensus Conference. *Contrib Nephrol* 2013; 182: 13–29
22. Haase M, Kellum JA, Ronco C. Subclinical AKI—an emerging syndrome with important consequences. *Nat Rev Nephrol* 2012; 8: 735–739
23. Ahmed SA, Hamed MA. Kidney injury molecule-1 as a predicting factor for inflamed kidney, diabetic and diabetic nephropathy Egyptian patients. *J Diabetes Metab Disord* 2015; 14: 6
24. Sabbisetti VS, Waikar SS, Antoine DJ *et al.* Blood kidney injury molecule-1 is a biomarker of acute and chronic kidney injury and predicts progression to ESRD in type I diabetes. *J Am Soc Nephrol* 2014; 25: 2177–2186

Received for publication: 17.12.2015; Accepted in revised form: 12.5.2016