

CORRECTION

Correction: Evaluation of Hs-CRP Levels and Interleukin 18 (-137G/C) Promoter Polymorphism in Risk Prediction of Coronary Artery Disease in First Degree Relatives

Rajesh Kumar G, Mrudula Spurthi K, Kishore Kumar G, Mohanalatha Kurapati, Saraswati M, Mohini Aiyengar T, Chiranjeevi P, Srilatha Reddy G, Nivas S, Kaushik P, Sanjib Sahu K, Surekha Rani H

In [Table 2](#), there are errors in the “Dominant,” “Recessive,” “Overdominant,” and “Allele frequency” rows. Please view the corrected table below.



 OPEN ACCESS

Citation: G RK, K MS, G KK, Kurapati M, M S, T MA, et al. (2015) Correction: Evaluation of Hs-CRP Levels and Interleukin 18 (-137G/C) Promoter Polymorphism in Risk Prediction of Coronary Artery Disease in First Degree Relatives. PLoS ONE 10(5): e0127609. doi:10.1371/journal.pone.0127609

Published: May 6, 2015

Copyright: © 2015 G et al. This is an open access article distributed under the terms of the [Creative Commons Attribution License](#), which permits unrestricted use, distribution, and reproduction in any medium, provided the original author and source are credited.

Table 2. Genotype distribution of IL 18–137 G/C polymorphism in Controls, CAD patients and FDRS (N = 700).

Model	Genotype	Controls N = 300 n (%)	CAD N = 300 n (%)	CAD Odds Ratio			FDRS N = 100 n (%)	FDRS Odds Ratio		
				χ^2	Odds ratio (95% CI)	p-Value		χ^2	Odds ratio (95% CI)	p-Value
Co-dominant	GG	176(58.7)	168(56)	0.001	1	0.99	65(65)	2.34	1	0.12
	GC	105(35)	102(34)		1.02 (0.72–1.44)		25(25)		0.64 (0.38–1.09)	
	CC	19(6.3)	30(10)	1.8	1.65 (0.90–3.05)	0.17	10(10)	2.38	1.43 (0.63–3.23)	0.12
Dominant	GG	176(58.7)	168(56)	0.33	1.12	0.56	65(65)	1	0.76	0.31
	GC-CC	124(41.3)	132(44)		(0.81–1.54)		35(35)		(0.48–1.22)	
Recessive	GG-GC	281(93.7)	270(90)	2.22	1.64	0.13	90(90)	1	1.64	0.31
	CC	19(6.3)	30(10)		(0.90–2.99)		10(10)		(0.74–3.66)	
Overdominant	GG-CC	195(65)	198(66)	0.02	0.96	0.86	75(75)	2.9	0.62	0.08
	GC	105(35)	102(34)		(0.68–1.34)		25(25)		(0.37–1.03)	
Log-Additive	----	----	----	----	1.17	0.23	----	----	0.93	0.71
					(0.91–1.50)				(0.65–1.34)	
Allele frequency	G	457(76)	438(73)	1.42	1.182	0.23	155(78)	0.08	0.92	0.77
	C	143(24)	162(27)		(0.91–1.53)		45(22)		(0.6295–1.354)	
Minor allele frequency	C	0.24	0.27		----		0.22		----	
HWE (p-value)		0.53	0.019		----		0.007		----	

doi:10.1371/journal.pone.0127609.t001

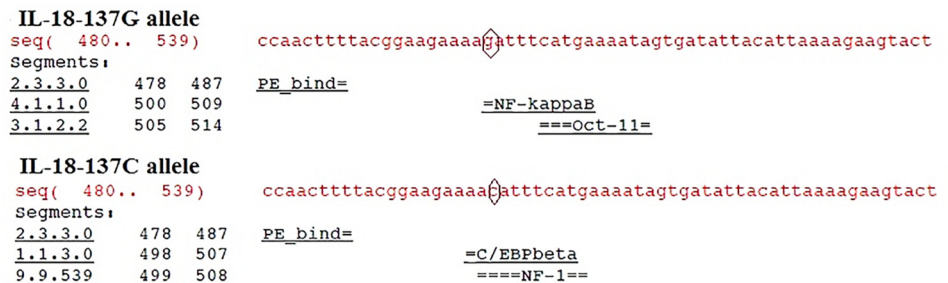


Fig 3. Analysis of Promoter binding site for IL-18-137 G/C Polymorphism.

doi:10.1371/journal.pone.0127609.g001

Additionally, in Fig 3, the line “Analysis of promoter binding site for IL-8 polymorphism” is erroneously included. Please view the corrected figure here.

Reference

1. G RK, K MS, G KK, Kurapati M, M S, T MA, et al. (2015) Evaluation of Hs-CRP Levels and Interleukin 18 (-137G/C) Promoter Polymorphism in Risk Prediction of Coronary Artery Disease in First Degree Relatives. PLoS ONE 10(3): e0120359. doi: [10.1371/journal.pone.0120359](https://doi.org/10.1371/journal.pone.0120359) PMID: [25822970](https://pubmed.ncbi.nlm.nih.gov/25822970/)