

RESEARCH

Open Access



Nuclear receptor ligand screening in an iPSC-derived in vitro blood–brain barrier model identifies new contributors to leptin transport

Yajuan Shi¹, Hyosung Kim¹, Catherine A. Hamann², Elizabeth M. Rhea^{3,4}, Jonathan M. Brunger^{2,5} and Ethan S. Lippmann^{1,2,5,6,7,8,9*}

Abstract

Background: The hormone leptin exerts its function in the brain to reduce food intake and increase energy expenditure to prevent obesity. However, most obese subjects reflect the resistance to leptin even with elevated serum leptin. Considering that leptin must cross the blood–brain barrier (BBB) in several regions to enter the brain parenchyma, altered leptin transport through the BBB might play an important role in leptin resistance and other biological conditions. Here, we report the use of a human induced pluripotent stem cell (iPSC)-derived BBB model to explore mechanisms that influence leptin transport.

Methods: iPSCs were differentiated into brain microvascular endothelial cell (BMEC)-like cells using standard methods. BMEC-like cells were cultured in Transwell filters, treated with ligands from a nuclear receptor agonist library, and assayed for leptin transport using an enzyme-linked immune sorbent assay. RNA sequencing was further used to identify differentially regulated genes and pathways. The role of a select hit in leptin transport was tested with the competitive substrate assay and after gene knockdown using CRISPR techniques.

Results: Following a screen of 73 compounds, 17 β -estradiol was identified as a compound that could significantly increase leptin transport. RNA sequencing revealed many differentially expressed transmembrane transporters after 17 β -estradiol treatment. Of these, cationic amino acid transporter-1 (CAT-1, encoded by SLC7A1) was selected for follow-up analyses due to its high and selective expression in BMECs in vivo. Treatment of BMEC-like cells with CAT-1 substrates, as well as knockdown of CAT-1 expression via CRISPR-mediated epigenome editing, yielded significant increases in leptin transport.

Conclusions: A major female sex hormone, as well as an amino acid transporter, were revealed as regulators of leptin BBB transport in the iPSC-derived BBB model. Outcomes from this work provide insights into regulation of hormone transport across the BBB.

Keywords: Induced pluripotent stem cells, In vitro blood–brain barrier model, Blood–brain barrier transport, Cationic amino acid transporter-1

*Correspondence: ethan.s.lippmann@vanderbilt.edu

¹ Department of Chemical and Biomolecular Engineering, Vanderbilt University, Nashville, TN, USA
Full list of author information is available at the end of the article

Introduction

The brain harmonizes energy homeostasis by interacting with peripheral tissues. Leptin, a 16 kDa hormone secreted by adipocytes, is released into the blood



© The Author(s) 2022. **Open Access** This article is licensed under a Creative Commons Attribution 4.0 International License, which permits use, sharing, adaptation, distribution and reproduction in any medium or format, as long as you give appropriate credit to the original author(s) and the source, provide a link to the Creative Commons licence, and indicate if changes were made. The images or other third party material in this article are included in the article's Creative Commons licence, unless indicated otherwise in a credit line to the material. If material is not included in the article's Creative Commons licence and your intended use is not permitted by statutory regulation or exceeds the permitted use, you will need to obtain permission directly from the copyright holder. To view a copy of this licence, visit <http://creativecommons.org/licenses/by/4.0/>. The Creative Commons Public Domain Dedication waiver (<http://creativecommons.org/publicdomain/zero/1.0/>) applies to the data made available in this article, unless otherwise stated in a credit line to the data.

circulation and crosses the blood–brain barrier (BBB) in several regions of the brain to reduce food intake and increase energy expenditure [1]. However, despite serum leptin levels being elevated in direct proportion to the amount of body fat, the efficacy of its anorexic effect is decreased in obesity [2]. Most obese subjects exhibit resistance to leptin, and this resistance impedes sustained weight loss [3]. Intriguingly, many mouse models of obesity are still responsive to intracerebroventricularly delivered leptin with high sensitivity compared to peripheral infusion, indicating that impaired brain access via diminished BBB transport may contribute to leptin resistance and other biological conditions [4, 5].

Unlike the leaky endothelium of other vascular beds in the body, the BBB is a highly selective interface. The BBB, whose functional properties are comprised by the brain microvascular endothelial cells (BMECs) that form the inner layer of the capillary vessel wall, strictly regulates bidirectional molecular exchange between the bloodstream and the brain [6]. Except for the free diffusion of gases and small lipophilic substances, most permeable molecules are transported to and from the brain through a cohort of specific receptors, transporters, and channels [7]. Similar to other hormones, leptin influx is enabled through saturable receptor-mediated transport at the BBB [8]. Although leptin brain uptake has been noted in regions not shielded by the BBB [8–10], the necessity of leptin BBB penetration has been confirmed in pre-clinical obesity models [11]. At the BBB, the leptin receptor (ObR) has been identified as a transporter of leptin [12]. However, in rodent models of obesity, leptin can be transported completely across the BBB in the absence of functional ObRs [13]. Further, inhibition [14] or deletion [15] of ObR at the BBB in cellular and in vivo models does not fully diminish leptin transport, suggesting that this process may not be ObR-dependent. In addition, low density lipoprotein receptor-related protein 2 contributes to leptin transport at the BBB [14] and the choroid plexus [16], indicating that other mechanisms exist to regulate leptin uptake in the brain.

In vivo studies linking BBB transport to specific genes are challenging to conduct due to low throughput. In contrast, in vitro BBB models have higher throughput and are more amenable to screening approaches. However, most in vitro models are not able to fully recapitulate the BBB properties. In particular, to study molecular transport, models must possess high trans-endothelial electrical resistance (TEER) that limits passive diffusion. The advent of human induced pluripotent stem cell (iPSC) technology has provided BMEC-like cells that exhibit robust BBB properties [17–22], including a cohort of essential transporters and restrictive paracellular permeability to facilitate central nervous system

(CNS) drug-permeability studies [23, 24], investigate disease biology [25–28], and study mechanisms of molecular transport [29–31]. Outcomes from these studies can provide critical insights into BBB biology, particularly when validation work is performed in physiologically relevant ex vivo and in vivo systems [32].

Here, we aimed to use iPSC-derived BMEC-like cells to better understand transcytosis of leptin across the BBB. Our strategy was to screen a nuclear receptor agonist library and assessed changes to leptin transport. We chose this strategy because nuclear receptors control a broad range of biological processes through activation by small lipophilic ligands [33]. Nuclear receptor signaling pathways have been implicated in nutrient and efflux transporter function in solid organs and tissue barriers such as the gut, peripheral endothelium, and BBB [34–36]. These pathways also play important roles in energy metabolism, lipid dysfunction, and obesity-related diseases, including manipulating the process of lipogenesis and gluconeogenesis, preventing the onset of obesity, and reversing the induced obesity in obese mouse models [37–39]. Moreover, nuclear receptor signaling influences the development, maintenance, and function of the BBB [18, 40, 41]. From this screen, we determined that treatment of BMEC-like cells with 17 β -estradiol yielded a significant increase in leptin transport. RNA sequencing of 17 β -estradiol-treated BMEC-like cells revealed a set of differentially regulated genes, and the gene ontology analysis on molecular functions emphasized signaling pathways involving transmembrane transporter activity. For validation, we manipulated one particular hit—cationic amino acid transporter 1 (CAT-1)—through functional and genetic assays and demonstrated changes to leptin transport. Overall, our work provides new insight into hormone transport across the BBB. We expect this study will provide a framework for screening and assessing how specific hormones and nutrients are transported across the BBB.

Methods

iPSC maintenance and differentiation

CC3 iPSCs were maintained and differentiated at 37 °C in a humidified CO₂ incubator following our previously published methods [20]. In brief, CC3 iPSCs were maintained in E8 medium on 6-well tissue culture plates (Fisher Scientific #07–20,083) coated with growth-factor reduced Matrigel (Corning #354,230), and cells were passaged every 3–4 days once reaching 70–80% confluency using pre-warmed Versene (Fisher Scientific #15–040-066).

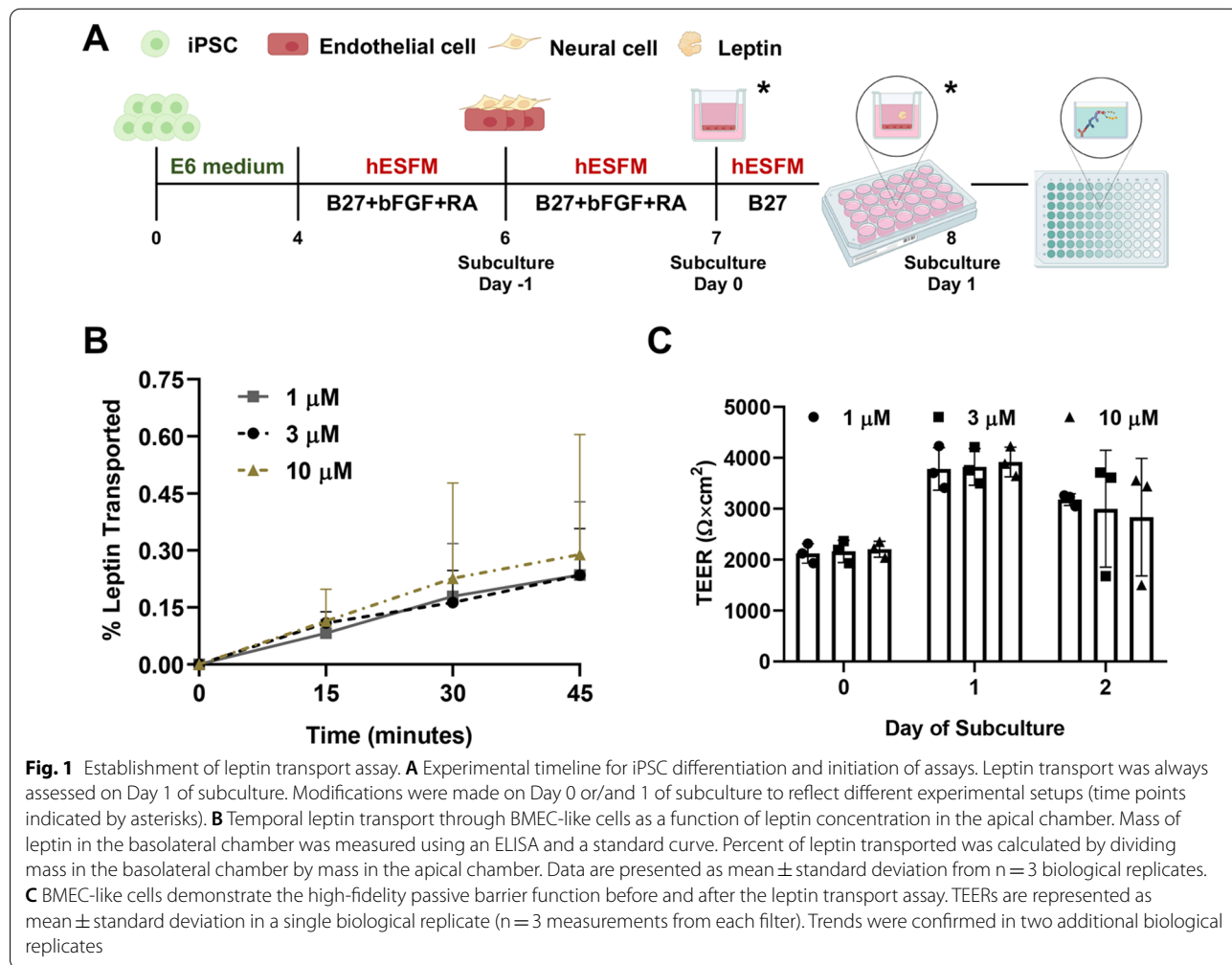
To differentiate iPSCs to BMEC-like cells, CC3 iPSCs were washed once with DPBS (Fisher Scientific #14–190-144), dissociated with Accutase for 3–4 min (Fisher

Scientific #A1110501), collected via centrifugation, and resuspended into E8 medium supplemented with 10 μM Y27632 (Tocris #1254). Cells were seeded on 6-well tissue culture plates coated with Matrigel at the density of 150,000 cells/well. Twenty-four hours after seeding (noted as Day 0 in Fig. 1A), the medium was switched to E6 medium and then changed every 24 h for 4 days. On Day 4, cells were changed to EC medium consisting of human endothelial serum-free media (hESFM; Thermo Fisher Scientific #11,111,044), 0.25X B27 supplement (Fisher Scientific #17-504-044), 20 ng/mL basic fibroblast growth factor (bFGF; PeproTech #100-18b), and 10 μM all-trans retinoic acid (RA; Sigma-Aldrich #R2625); no media changes were performed for 48 h. On Day 5, 24-well Transwell filter inserts (Fisher Scientific #07-200-154) were coated with 55 μL extracellular matrix (ECM) containing 400 $\mu\text{g/mL}$ collagen IV (Sigma-Aldrich #C5533) and 100 $\mu\text{g/mL}$ fibronectin (Sigma-Aldrich #F1141) in UltraPure DNase/RNase-free distilled water (Thermo Fisher Scientific #10,977,015).

On Day 6 (noted as Subculture Day -1 in Fig. 1A), differentiated cells were washed with DPBS, dissociated with Accutase for 20–30 min, collected via centrifugation, and resuspended in EC medium at the ratio of 1 well to 600 μL EC medium. 100 μL of cell suspension were plated on pre-coated Transwell inserts while 600 μL of EC medium were added to the basolateral chamber. On Day 7, referred to as Day 0 of subculture, the medium was changed to EC medium without bFGF and RA on both the apical and basolateral sides. Select experiments were conducted on Subculture Day 1 (Fig. 1A) and respective medium modifications are stated below.

TEER measurements

After plating cells on Transwell inserts, TEER was measured every 24 h on Day 0, Day 1, and/or Day 2 of subculture using the EVOM2 voltohmmeter (World Precision Instruments) with STX2 chopstick electrodes (World Precision Instruments). TEER was measured in an empty Transwell containing no cells as the baseline control.



Three measurements were taken from one filter at each time point. TEER values were corrected by subtracting the empty filter reading and multiplying by the surface area of the filter (0.33 cm²).

Initial assessment of leptin transport

Recombinant human leptin (R&D Systems #398-LP) was reconstituted at 1 mg/mL in sterile 20 mM Tris-HCl (Fisher Scientific #MT46031CM) at pH of 8.0. On Day 1 of subculture (Fig. 1A), TEER was measured to ensure barrier induction in the BMEC-like cells. Leptin was added to hESFM medium with B27 at the concentration of 1 μM, 3 μM, and 10 μM. At the start of this assay, the medium on the apical chamber of the 24-well Transwell insert was aspirated and then replaced with 100 μL of leptin working solution. 100 μL of medium was then collected from each basolateral chamber. At the same time, 100 μL of fresh hESFM medium with B27 were added back to the basolateral chamber to maintain a consistent medium volume. Basolateral medium collection was repeated every 15 min for 45–60 min total as needed. Each plate was returned to the incubator after medium extraction and replacement. Collected samples were stored at –80 °C, and leptin concentration was measured through ELISA as described below.

Nuclear receptor ligand screening and validation

To identify possible ligands involved in leptin transport regulation, the SCREEN-WELL Nuclear Receptor ligand library (Enzo Life Sciences #BML-2802–0100), consisting of 73 compounds dissolved in Dimethyl sulfoxide (DMSO), was used in primary ligand screening. As previously described, BMEC-like cells differentiated from iPSCs were purified onto ECM-coated 24-well Transwell filters in EC medium. TEER was measured approximately every 24 h after subculture to confirm passive barrier function. On Day 0 of subculture, compounds were added at the concentration of 10 μM into EC medium lacking bFGF and RA. Equivalent volume of DMSO (Sigma-Aldrich #D8418) was used as a negative control at a final concentration of 0.1%. Medium on both sides of Transwell inserts were replaced with medium supplemented with respective select compound or DMSO. 24 h after the medium change, BMEC-like cells received a medium change only in the apical compartment, respectively. This medium was composed of EC medium lacking bFGF and RA, 10 μM of select compound or DMSO, and 3 μM of leptin. After a 30-min incubation at 37 °C, 100 μL of the medium was extracted from the basolateral compartment in each well and transferred into individual microfuge tubes. Collected medium was stored at –80 °C and measured using ELISA as described below. During the primary screening, each condition was assayed

across duplicate filters. After analyzing data from the primary screen, 7 select ligands and a DMSO control were re-examined in one 24-well plate with triplicate Transwell filters. The leptin transport assay was conducted as described above. This process was repeated across 3 biological replicates to enable statistical assessments and evaluate reproducibility.

ELISA assay

Leptin concentration within all collected samples was determined using the Human Leptin Standard ABTS ELISA Development Kit (PeproTech #900-K90) and ABTS ELISA Buffer Kit (PeproTech #900-K00) according to the manufacturer's suggestions with subtle adjustments.

Prior to the assay, solutions were diluted and adjusted to pH 7.2 using the Orion Star A221 benchtop pH meter (Thermo Fisher Scientific #STARA2110). On the first day, 100 μL of 1 μg/mL capture antibody in 1× PBS was added into each well of one ELISA microplate (Corning #3590). The plate was sealed with polyester adhesive sheet and incubated overnight at room temperature. On the second day, the plate was washed four times using 300 μL of 1X wash buffer and blotted on a paper towel to remove residual buffer after the last wash. 300 μL of block buffer was then added into each well and incubated for 2 h at room temperature. During this time, collected samples were diluted into 1× Diluent buffer using the optimized dilution factor (1 μM leptin, 1:10; 3 μM leptin, 1:25; 10 μM leptin, 1:60). Human leptin standard was diluted into 1X Diluent at the concentration of 4000 pg/mL, 3000 pg/mL, 2000 pg/mL, 1000 pg/mL, 500 pg/mL, 250 pg/mL, 125 pg/mL, and 0 pg/mL to generate a standard curve. After blocking, plate was washed with wash buffer and filled with 100 μL of standard or diluted sample in each well in duplicates or triplicates as needed. The plate was not disturbed until sample incubation was finished after 2.5 h at room temperature. Following sample incubation, the plate was washed again. Then, 100 μL of 0.25 μg/mL detection antibody in 1× Diluent was added into each well of the plate to incubate for 2 h at room temperature. After incubation with the detection antibody, the plate was washed again and replaced with 100 μL of Avidin-HRP conjugate in 1× Diluent at the ratio of 1:2000. The plate was then incubated with Avidin-HRP conjugate for 30 min at room temperature and washed again. Following washing, 100 μL of ABTS was added to each well and incubated at room temperature for color development. The ELISA plate was monitored on a BioTek Synergy H1 multi-mode microplate reader at 405 nm with wavelength correction set at 650 nm for approximately 60 min at room temperature. A standard curve was then created in GraphPad Prism using known

leptin concentrations and used to convert all experimental measurements to concentration.

RNA sequencing and pathway analysis

Bulk RNA-sequencing was applied to profile transcriptional changes under 17β -estradiol treatment. BMEC-like cells were purified onto 6-well plates, and 24 h after subculture, $10\ \mu\text{M}$ of 17β -estradiol or DMSO was prepared in EC medium lacking bFGF and RA and added to the cells. After 24 h, BMEC-like cells were washed once with DPBS, lifted using a cell lifter (Fisher Scientific #08–100-240), and collected via centrifugation. Resultant cell pellets were lysed in TRIzol reagent (Thermo Fisher Scientific #15,596,026) at room temperature for 10 min and stored at $-80\ ^\circ\text{C}$. Three biological replicates were collected per condition. Following the manufacturer's guideline, RNA from each sample was purified using a Direct-zol RNA Miniprep kit (Zymo Research #R2051) simultaneously. Purified RNA samples were submitted to the Vanderbilt Technologies for Advanced Genomics core and sequenced on an Illumina NovaSeq6000. Raw sequencing reads were trimmed and aligned to human genome (GRCh38) with HISAT2 2.2.0 [42], and genomic features were obtained using the featureCounts function [43]. Differential gene expression and meta read counts were analyzed with edgeR [44]. Gene ontology enrichments analysis was performed on genes with $p < 0.05$ and fold change greater than 1.5 using WEB-based Gene Set Analysis Toolkit (WebGestalt) [45].

Amino acid treatments

On Day 1 of subculture, the medium in the apical chamber was replaced with $100\ \mu\text{L}$ of EC medium lacking bFGF and RA and containing $3\ \mu\text{M}$ of leptin and $3\ \text{mM}$ of amino acid substrate. After 30 min, $100\ \mu\text{L}$ of medium was collected from the basolateral chamber and stored at $-80\ ^\circ\text{C}$. ELISA was then used to quantify leptin concentration as previously described. In terms of amino acids, L-Cystine (Sigma-Aldrich #C8755) was selected as the substrate of cystine/glutamate transporter (encoded by *SLC7A11*), L-Serine (Sigma-Aldrich #S4311) was selected as the substrate of neutral amino acid transporter A (encoded by *SLC1A4*) and neutral amino acid transporter B(0) (encoded by *SLC1A5*), and glycine (Sigma-Aldrich #G8790) was selected as the substrate of glycine transporter 1 (encoded by *SLC6A9*). CAT-1 (encoded by *SLC7A1*) and CAT-3 (encoded by *SLC7A3*) had 4 substrates including L-Lysine hydrochloride (Fisher Scientific #BP386), L-Histidine (Sigma-Aldrich #H6034), L-Ornithine monohydrochloride (Sigma-Aldrich #O6503), and L-Arginine (Acros Organics #104,991,000).

CRISPR plasmid design and construction

To produce a Sleeping Beauty (SB) transposon vector for inducible expression of the CRISPRoff-expression cassette, the SB transposon from Addgene plasmid 60,495 (gifted from Eric Kowarz [46]) was modified to replace the constitutive RPBSA promoter-driven expression of rtTA-advanced with EF-1 α -driven expression of TetOn-3G. This transposon vector then served as the backbone for cloning the CRISPRoff-v2.1 protein, which consists of a fusion of Dnmt3A, Dnmt3L and ZNF10 KRAB protein domains to dCas9 and blue fluorescent protein (BFP), downstream of the tetracycline response element (TRE) promoter. The TetOn-3G vector was digested with SfiI, and a PCR amplicon containing the CRISPRoff-v2.1 protein from Addgene plasmid 167,981 (gifted from Luke Gilbert [47]) was inserted into the backbone downstream of the TRE using NEBuilder HiFi DNA Assembly Master Mix (NEB #E2621) following the manufacturer's recommendations. The final transposon contains the constitutive TetOn-3G with TRE-driven CRISPRoff.

A second SB transposon vector containing the U6-sgRNA expression cassette was produced by cloning two PCR fragments into the backbone of Addgene plasmid 60,495. One insert consisted of the U6-sgRNA cassette from Addgene 71236 (gifted from Charles Gersbach [48]). This cassette contains two BbsI cleavage sites that enable cloning of target-specific spacer sequences between the U6 promoter and the gRNA scaffold. The second insert included the murine PGK promoter upstream of the hygromycin B phosphotransferase transgene. The SB transposon vector backbone, including the SB inverted terminal repeats, was PCR amplified, and the three amplicons were assembled using the NEBuilder HiFi DNA Assembly Master Mix following manufacturer's recommendations. Three single gRNAs (sgRNAs) targeting *SLC7A1* and three non-targeting control sgRNAs were selected from a published CRISPR library [49]. Sequences are available in Additional file 1: Table S1.

These transposon vectors were propagated in DH5 α competent cells and co-transfected along with a plasmid encoding the hyperactive enzyme SB 100 \times Transposase (Addgene 34879, gifted from Zsuzsanna Izsvak [50]) as described below.

iPSC transfection, sorting, and differentiation

CC3 iPSCs were maintained in mTeSR Plus medium (StemCell Technologies #100–0276) before transfection. To generate a stable cell line with inducible expression of CRISPRoff, the TransIT-LT1 reagent (Mirus Bio #MIR2304) was used to deliver the SB 100 \times transposase and transposon vectors. First, $250\ \mu\text{L}$ of mTeSR Plus medium containing $1\ \mu\text{L}$ of $10\ \text{mM}$ Y27632 was added

into a well of a Matrigel-coated 12-well plate. Then, a mixture of plasmids encoding SB transposase (1 µg) and CRISPRoff (1 µg) was prepared in 200 µL of Opti-MEM I reduced serum medium (Thermo Fisher Scientific #319,850–62) supplemented with 6 µL of TransIT-LT1. After a 15-min incubation at room temperature, the transfection mix was added into the well of a 12-well plate. CC3 iPSCs were rinsed once with DPBS, dissociated with Accutase for 3–4 min, collected via centrifugation, and resuspended into mTeSR Plus medium at the density of 1.5×10^6 cells/mL. 500 µL of this cell suspension was added into the well containing the transfection mix. 24 h after transfection, the transfection medium was exchanged for fresh mTeSR Plus medium.

These same iPSCs were transfected a second time using the methods described above. This second time, a mix of plasmids encoding SB transposase (1 µg) and sgRNAs (1 µg total of 3 pooled gRNA vectors) were used. 24 h after transfection, transfected cells were changed to mTeSR Plus medium supplemented with 115 µg/mL of Hygromycin B (Sigma-Aldrich #H3274). 2 days later, cells were changed to mTeSR Plus medium supplemented with 115 µg/mL of Hygromycin B and 2 µg/mL of doxycycline hyclate (Sigma Aldrich #D9891). The following day, cells were sorted with a BD FACSAria III based on BFP expression and plated onto Matrigel-coated plates in mTeSR Plus medium supplemented with 10 µM Y27632. After 3 days, sorted iPSCs were changed to E8 medium supplemented with 2 µg/mL of doxycycline and differentiated into BMEC-like cells and utilized for leptin transport experiments as described above.

Western blot analysis

iPSCs were harvested 9 days after the initiation of doxycycline treatment. Cells were lysed in RIPA buffer (Sigma Aldrich #R0278) supplemented with 1% v/v of protease inhibitor cocktail (Sigma-Aldrich #P8340) and 1% v/v of phosphatase inhibitor cocktail 3 (Sigma-Aldrich #P0044). After 30-min lysis on ice, samples were centrifuged at 12,000xg for 15 min at 4 °C and the supernatants were collected. Protein concentrations were measured with a Pierce BCA protein assay kit (Thermo Fisher Scientific #23,225). 25 µg of total protein was separated on 4–20% Criterion TGX precast midi protein gels (Bio-Rad #5,671,094) and transferred onto nitrocellulose membranes (Thermo Fisher Scientific #IB23001) using an iBlot 2 gel transfer device (Thermo Fisher Scientific #iB21001). Membranes were blocked with Odyssey blocking buffer (Li-Cor #92,750,000) at room temperature for 30 min, incubated with Odyssey blocking buffer containing primary antibody and 0.05% Tween 20 (Sigma-Aldrich #P9416) at 4 °C overnight, and incubated with 1× Tris Buffered Saline (TBS, Corning #46–012-CM) containing

respective secondary antibody and 0.05% Tween 20 at room temperature for 2 h. Membranes were imaged with Odyssey XF (Li-Cor), and band intensity was determined using Image Studio software.

qPCR analysis

Total RNA was extracted on Day 1 of subculture and purified using a Direct-zol RNA Miniprep kit as described above. cDNA was generated using a High-Capacity cDNA Reverse Transcription kit (Applied Biosystems #4,368,814). qPCR was performed in a 20 µL of reaction mix containing 9 µL of cDNA template, 10 µL of TaqMan Universal PCR Master Mix (Applied Biosystems #4,304,437), and 1 µL of TaqMan probe (Thermo Fisher Scientific, *SLC7A1* #Hs00931450_m1, *ACTB* #Hs01060665_g1) on a CFX96 Thermocycler (Bio-Rad). Samples were analyzed by normalizing expression levels to *ACTB*, and relative quantification was performed using the $\Delta\Delta C_q$ method.

Immunocytochemistry

On Day 1 of subculture, BMEC-like cells were washed twice with DPBS, fixed in 100% ice-cold methanol (Fisher Scientific #A412-1) or 4% paraformaldehyde solution (Thermo Fisher Scientific #AAJ19943K2) for 20 min, and washed twice with DPBS. Fixed cells were blocked with DPBS containing 5% donkey serum (Sigma-Aldrich #D9663) and 0.3% Triton-X 100 (Sigma-Aldrich #X100), referred to as PBSDT, at room temperature for 1 h. Cells were then incubated with primary antibody diluted in PBSDT at 4 °C overnight. After primary antibody incubation, cells were washed three times with DPBS, incubated with secondary antibody diluted in PBSDT at room temperature for 2 h, incubated with 4',6-diamidino-2-phenylindoldihydrochloride (DAPI, Thermo Fisher Scientific #D3571) diluted in DPBS for 10 min, and then washed with DPBS three times. Secondary antibody incubation was skipped if primary antibody was conjugated with a fluorophore. Images were acquired using Leica DMi8 microscope and analyzed with Fiji ImageJ. All antibody information is listed in Additional file 1: Tables S2 and S3.

Statistical analysis

All data are presented as mean \pm standard deviation. One-way ANOVA and the Student's unpaired t-test were used to determine statistical significance as described in each figure legend.

Results

Establishment of leptin transport assay

To quantify leptin transport across the BBB monolayer, we subcultured BMEC-like cells on Transwell filters and used ELISA to measure leptin transport across the

cell monolayer (Fig. 1A). iPSCs were differentiated into BMEC-like cells according to our previously published protocols, where passive and active BBB properties have been confirmed [20]. To mimic the in vivo peripheral-to-CNS transport, leptin was added onto the apical side of Transwell filters, and measurements were performed on medium extracted from the basolateral chamber. Several apical leptin concentrations were tested, which did not produce significance differences in the percentage of leptin transported across the cell monolayer (Fig. 1B). TEER was measured before and after the experiments to ensure maintenance of barrier integrity, where all TEER values were greater than $900 \Omega \times \text{cm}^2$ (Fig. 1C), suggesting that leptin transport was not influenced by paracellular leakage [51]. Overall, the data demonstrated the suitability of this in vitro model for examining leptin transport under different conditions.

Nuclear receptor agonist library screen

To assess the potential influence of nuclear receptor signaling pathways on leptin transport, a nuclear receptor ligand library containing 73 compounds was screened. We selected a 3 μM dose of leptin and a 30-min incubation to remain in the linear transport phase (Additional file 1: Figure S1). To carry out the screen, 10 μM of ligand was added to both sides of Transwell inserts on Day 0 of subculture and leptin transport was quantified the following day. All compounds were assayed in duplicate, and these data can be found in Additional file 1: Table S4.

Seven ligands were selected from primary screening for further validation based on the following rationale. 6-Formylindolo [3,2-B] carbazole is an endogenous aryl hydrocarbon receptor agonist [52] that had the strongest effect on leptin transport in the primary screen. Troglitazone, a synthetic peroxisome proliferator-activated receptor (PPAR)- γ agonist [53], is an antidiabetic drug that can influence circulating leptin levels and increase insulin sensitivity [54, 55]. Dexamethasone, a glucocorticoid receptor agonist that downregulated leptin transport in the primary screen, has been shown to reduce energy expenditure and exaggerate adiposity in diet-induced obese mice [56]. Cortisone, a glucocorticoid receptor agonist [57] that also decreased leptin transport in the primary screen, has been shown to impair conversion of cortisone into cortisol in subjects with central adiposity [58]. N-oleoylethanolamide, an endogenous PPAR α agonist [59] that enhanced leptin transport in the primary screen, previously yielded suppressed appetite and reduced body weight in experimental and clinical studies [60]. 17β -estradiol, an endogenous estrogen receptor agonist [61] that enhanced leptin transport in the primary screen, has been shown to decrease body weights in obese ovariectomized high-fat fed mice [62]. Last,

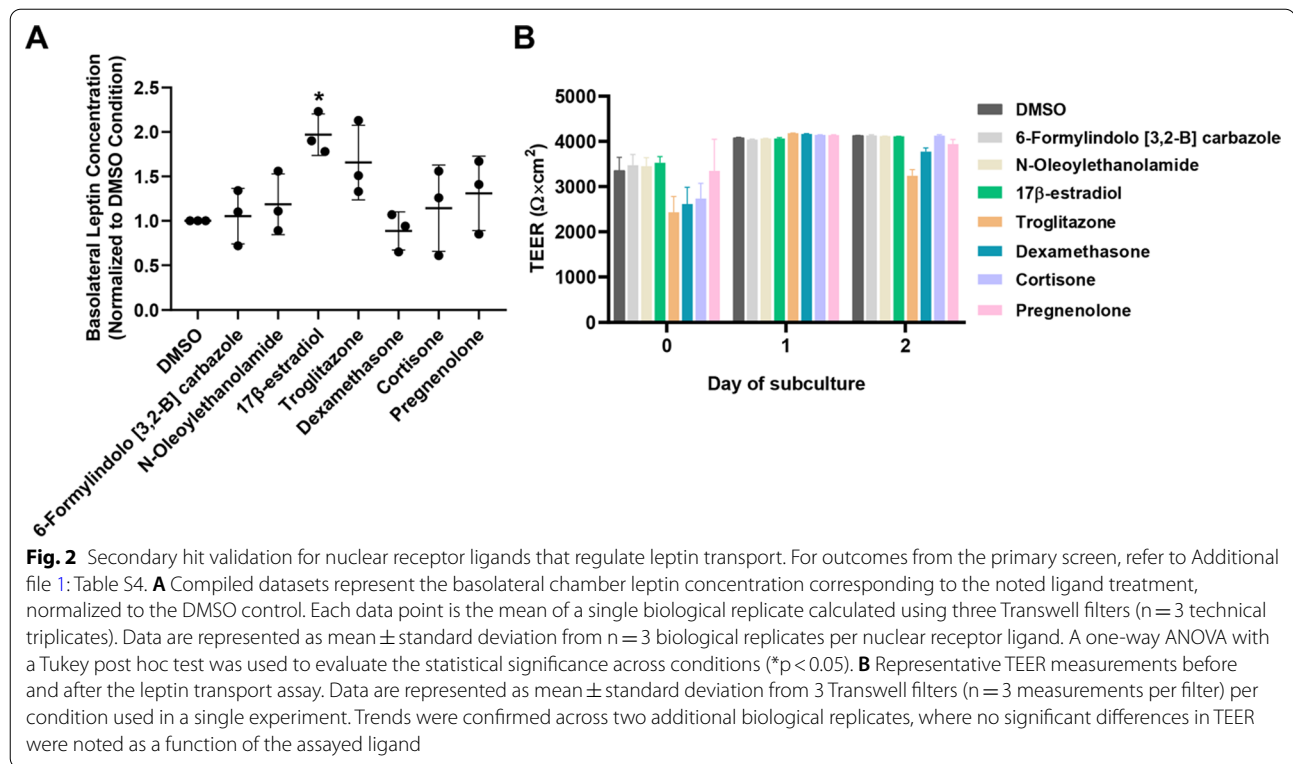
pregnenolone, an endogenous pregnane X receptor agonist [63] that decreased leptin transport in the primary screen, was found to be significantly higher in obese subjects [64]. In the validation experiments, troglitazone yielded a trending increase in leptin transport that was not statistically significant, and all other compounds yielded mean values in line with the negative control. In contrast, 17β -estradiol produced a significant increase in leptin transport when assayed across multiple replicates (~twofold increase, $p < 0.05$) (Fig. 2A). No overt differences in TEER were noted as a function of small molecule treatment (Fig. 2B).

Transcriptome profiling after 17β -estradiol treatment

Because 17β -estradiol yielded the most pronounced increase in leptin transport, we chose to probe its effects in more depth. To investigate whether 17β -estradiol altered the global transcriptome, RNA was collected from iPSC-derived BMEC-like cells after 17β -estradiol or DMSO treatment and subjected to bulk sequencing (Fig. 3A); increased leptin transport by 17β -estradiol treatment and maintenance of passive barrier function was confirmed in these samples (Additional file 1: Figure S2). Raw sequencing reads were aligned to the human genome, and differential gene expression was analyzed. Using a threshold of $p < 0.05$, we identified 188 genes as being downregulated and 277 genes as being upregulated within 19,113 genes with non-zero read counts (Fig. 3B). Of these, 105 upregulated genes and 57 downregulated genes had a minimum of 1.5-fold change (Fig. 3B, Additional file 1: Figure S3, and Additional file 2: Table S5). To understand similarities between these genes, we employed a Gene Ontology analysis to cluster the enriched gene sets under the 17β -estradiol condition relative to the DMSO condition. From this analysis, we determined that significantly enriched gene sets were predominantly related to transmembrane transporter activity (Fig. 3C). Particularly, solute carrier (SLC) genes, including *SLC1A4*, *SLC1A5*, *SLC6A9*, *SLC7A1*, *SLC7A3*, and *SLC7A11*, were recognized under the drug transmembrane transporter activity gene set and found to be significantly upregulated by 17β -estradiol (Fig. 3D). We also determined that *LEPR* expression was not significantly altered by 17β -estradiol treatment (Fig. 3E), suggesting that changes to leptin transport were not influenced by ObR.

Evaluation of SLC transporter contributions to leptin transport

The SLC family is known to facilitate the transport of a range of small molecules, such as glucose, amino acids, and nucleotides [65]. To initially probe links between SLCs and leptin transport, we examined changes to leptin



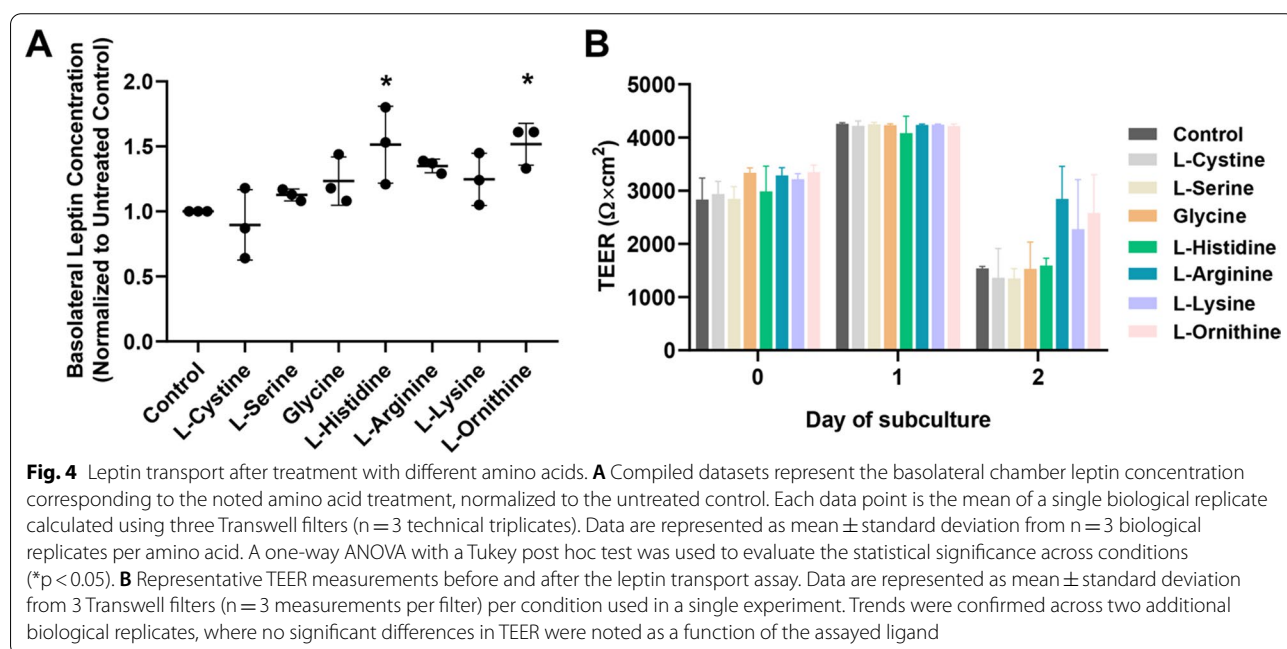
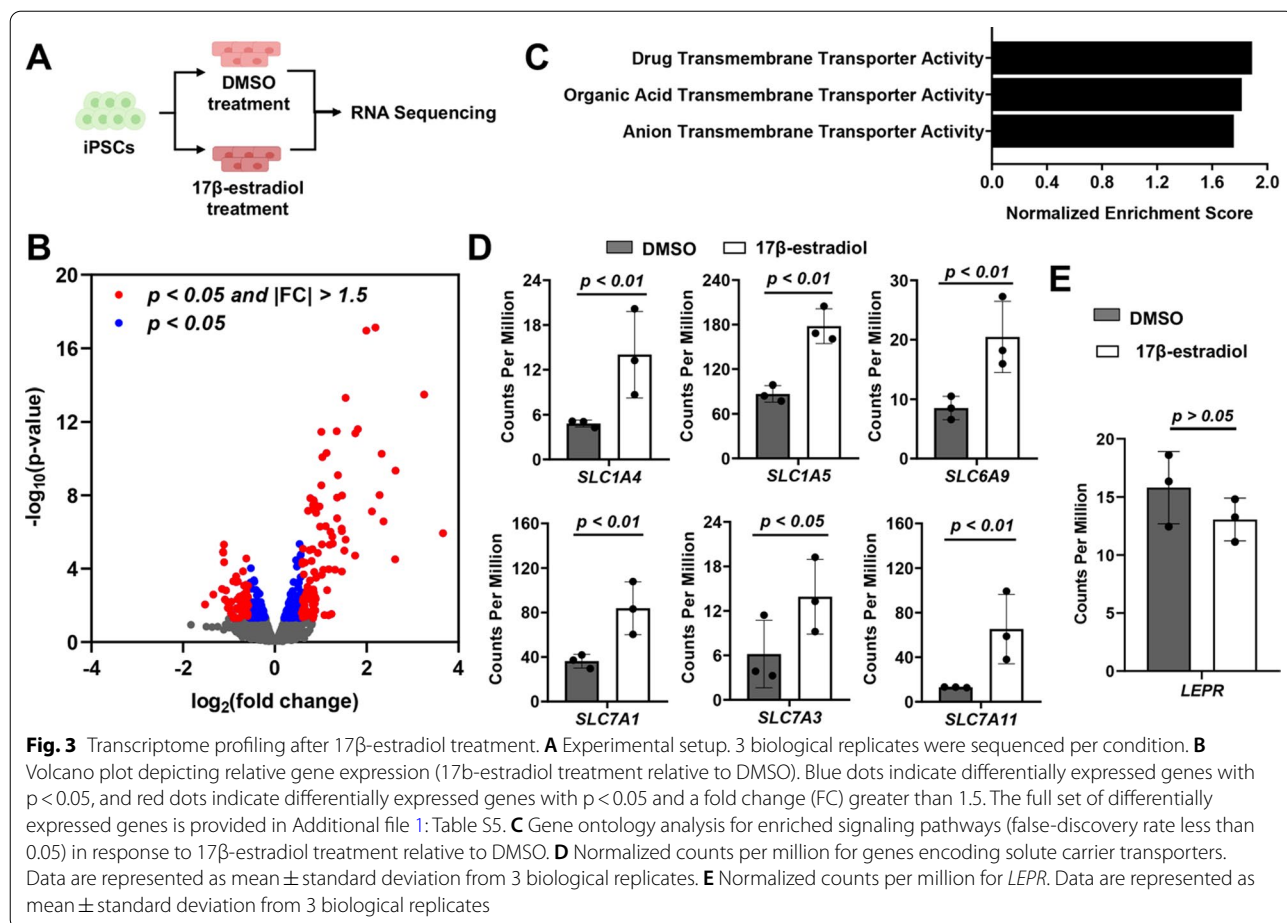
transport in the presence of different amino acids that are predicted substrates of various SLCs. Among these amino acids, substrates of CAT-1 (encoded by *SLC7A1*) augmented leptin transport. Specifically, L-Histidine and L-Ornithine yielded a significant change of ~ 1.5 -fold ($p < 0.05$) in leptin transport without disruption of passive barrier function (Fig. 4). L-Ornithine is also known to be a substrate of CAT-3 (encoded by *SLC7A3*). However, *SLC7A3* has low expression levels in iPSC-derived BMEC-like cells, mouse brain endothelial cells [66], and human endothelial cells [67] compared to the relatively higher expression of *SLC7A1*. Further, *SLC7A1* is highly and selectively expressed in brain endothelial cells with respect to other neurovascular cell types in single-cell RNA-sequencing datasets [66], and CAT-1 has previously been shown to be functionally active in iPSC-derived BBB models [68, 69], marking it as an interesting candidate for further evaluation.

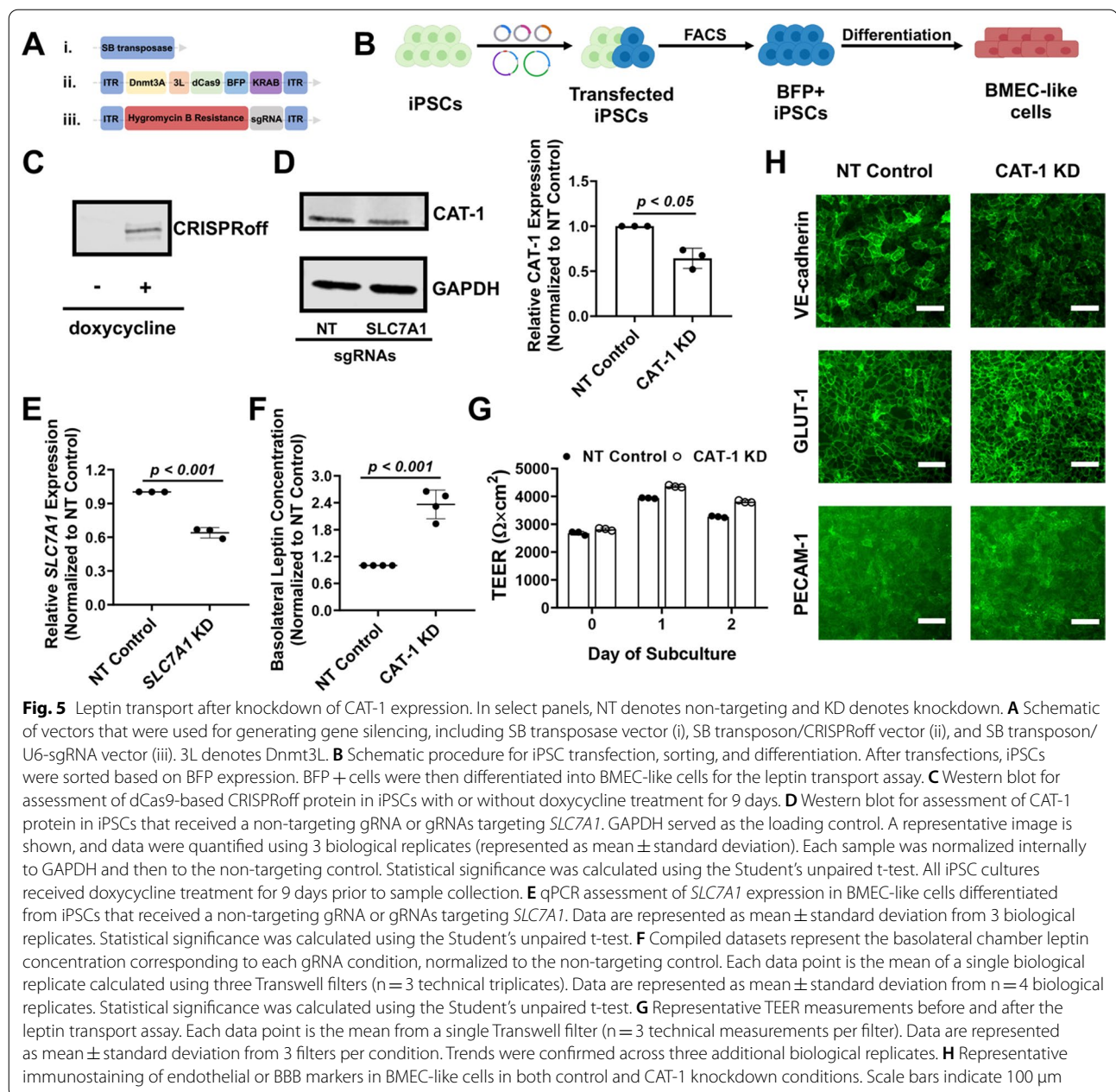
To more precisely interrogate the role of CAT-1 in leptin transport through modulation of gene expression, an inducible CRISPR platform was introduced into iPSCs with the SB transposon system [46, 50]. We chose to use the CRISPRoff construct which can program heritable epigenetic memory that persists through the differentiation of iPSCs [47]. After transient transfections with plasmids encoding the CRISPRoff system, sgRNAs, and the SB transposase (Fig. 5A), iPSCs were subjected to

doxycycline treatment to initiate gene silencing through induction of the CRISPRoff expression, then sorted based on BFP expression (Fig. 5B). After 9 days of treatment, we confirmed CRISPRoff expression in iPSCs via western blot (Fig. 5C), as well as a significant decrease in CAT-1 protein expression (Fig. 5D). After differentiating iPSCs into BMEC-like cells, maintenance of the knockdown was confirmed using qPCR to measure *SLC7A1* expression (Fig. 5E). In these same cells, leptin transport was significantly increased by ~ 2.4 -fold relative to the non-targeting sgRNA control cells (Fig. 5F). No overt differences in TEER or changes to endothelial or BBB markers were observed after the incorporation of the CRISPRoff system or due to *SLC7A1* knockdown (Fig. 5G-H), which strongly suggests that the changes to leptin transport are due to altered CAT-1 expression. Hence, CAT-1 expression and/or activity levels modulate leptin transport within this in vitro model.

Discussion

The concept of leptin resistance was proposed several decades ago and continues to be explored for its role in obesity disorders. Other than the BBB [8], leptin can penetrate the brain through different routes including the blood-cerebrospinal fluid (CSF) barrier formed by epithelial cells in the choroid plexus [9], the median eminence-CSF barrier composed of tanycytes in the





mediobasal hypothalamus [70], and regions allowing the free access to the brain adjacent to circumventricular organs. However, impaired leptin BBB transport has been demonstrated in obese subjects and contributes to functional and behavioral changes related to obesity [1, 71–73]. Because the mechanisms of leptin transport across the BBB are mostly unknown, it has been challenging to develop strategies to counteract leptin resistance.

To prospectively identify potential contributors to leptin transport, we combined nuclear receptor ligand screening with transcriptional profiling in our

representative in vitro BBB model. We first determined that treatment with 17β -estradiol could significantly increase leptin transport across iPSC-derived BMEC-like cells. 17β -estradiol is the predominant circulating estrogen hormone in pre-menopausal women [74], and the circulating 17β -estradiol pool receives contributions from adipose tissues in both males and females [75]. Chronic loss of ovarian function results in decreased blood-to-brain transport of leptin in ovariectomized mice [76]. Further, studies have shown that 17β -estradiol levels are correlated with the incidence of obesity [77],

and the use of 17 β -estradiol can alleviate the high-fat diet and ovariectomy-induced obesity [78, 79]. The literature regarding the influence of 17 β -estradiol on BBB function is very mature, as 17 β -estradiol treatment has been shown to regulate the expression of BBB transporters [35, 80, 81], BBB permeability, and tight junction integrity [82–85]. However, to our knowledge, no studies have examined global transcriptional changes imparted by 17 β -estradiol treatment. Our RNA sequencing and Gene Ontology analyses revealed that 17 β -estradiol has a profound influence on transmembrane transporter expression patterns, including the SLC family. We further verified that treatment of BMEC-like cells with SLC substrates, as well as knocking down *SLC7A1*, could significantly alter leptin transport. Here, an unexpected result was that 17 β -estradiol increased *SLC7A1* expression concurrently with leptin transport, while explicitly reducing *SLC7A1* expression also increased leptin transport. We speculate that other transporters differentially regulated by 17 β -estradiol could contribute to a net increase in leptin transport even if CAT-1 activity individually decreases leptin transport. Knockdown of a single transporter could also elicit multiple compensatory mechanisms that we do not yet understand, which are further discussed below. Overall, while our investigations have not identified a new leptin transporter (since leptin is unlikely to be a substrate for SLC transporters), these studies provide new insight into mechanisms of leptin transport regulation.

A key remaining question is how an amino acid transporter might regulate transport of a hormone across the BBB. There is a precedence for such effects, as studies from several decades ago showed that peptides could influence the passage of nonpeptide substances across the BBB [86, 87], and vice versa [88]. One potential mechanism is modification of intracellular signaling events. For example, arginine methylation has been identified as a key step in Wnt signaling through GSK3 phosphorylation [89], and Wnt signaling has important roles in BBB development [90–92] and maintenance [93]. Since arginine is a substrate of CAT-1 [94], a reduction in CAT-1 expression could impact Wnt signaling activity and yield downstream changes to expression or activity of other transporters; this type of mechanism may also be conserved through other amino acid transporters. Arginine is also the biological precursor for nitric oxide, and it is possible that altered CAT-1 expression could reduce bioavailability of nitric oxide, thereby contributing indirectly to endothelial dysfunction and altered BBB properties [95]. Another potential mechanism is through altered intracellular trafficking. For example, *SLC38A9* is essential for an amino acid-stimulated endosome-to-Golgi trafficking in cultured cells through direct interactions

with proteins in a GTPase network [96]. In this context, it is possible that altered expression of amino acid transporters changes trafficking within the BBB and enhances transcytosis. Each of these possibilities would require extensive molecular interrogation and will be the subject of future investigations.

Conclusions

The workflow established in the iPSC-derived BBB model provided a platform to quantitatively assess molecular transport of leptin. Using a nuclear receptor ligand screen, 17 β -estradiol was identified for its ability to enhance leptin transport. RNA sequencing revealed bulk transcriptomic changes centered around transmembrane transporters that were differentially regulated by 17 β -estradiol. The functional importance of a particular transporter, CAT-1, was further validated through the CRISPRoff system to probe the BBB transport biology. Overall, this work provides important insights on regulation of hormone transport across the BBB and offers a framework for studying the transport of other hormones and nutrients across the BBB using iPSC-based models.

Abbreviations

BBB: Blood–brain barrier; BMEC: Brain microvascular endothelial cell; ObR: Leptin receptor; TEER: Trans-endothelial electrical resistance; iPSC: Induced pluripotent stem cell; CNS: Central nervous system; ELISA: Enzyme-linked immune sorbent assay; CAT-1: Cationic amino acid transporter-1; hESFM: Human endothelial serum-free media; bFGF: Basic fibroblast growth factor; RA: Retinoic acid; ECM: Extracellular matrix; DMSO: Dimethyl sulfoxide; WebGeStalt: WEB-based Gene SeT Analysis Toolkit; SB transposon: Sleeping Beauty transposon; BFP: Blue fluorescent protein; TRE: Tetracycline response element promoter; sgRNA: Single guide RNA; DAPI: 4',6-Diamidino-2-phenylindol-dihydrochloride; PPAR: Peroxisome proliferator-activated receptor; SLC: Solute carrier; CSF: Cerebrospinal fluid.

Supplementary Information

The online version contains supplementary material available at <https://doi.org/10.1186/s12987-022-00375-3>.

Additional file 1. Tables S1–S4 and Figures S1–S3.

Additional file 2. Table S5.

Acknowledgements

The authors would like to thank Dr. Jamey Young for the use of the BioTek Synergy H1 multi-mode microplate reader. The authors also would like to thank Vanderbilt Flow Cytometry core for technical assistance on cell sorting. Some figures in this manuscript were produced in part with BioRender software.

Author contributions

YS and ESL designed the research, analyzed the results, and wrote the paper. HK contributed to the RNA sequencing analysis and vector cloning. CAH and JMB provided vectors and advised on implementation of the CRISPRoff system. EMR provided important insight into experimental outcomes. All authors read and approved the final manuscript.

Funding

This work was supported by a Ben Barres Early Career Acceleration Award from the Chan Zuckerberg Initiative (Grant 2018–191850 to ESL) and National

Institutes of Health Grants R01 NS110665 (to ESL), R61 NS112445 (to ESL), and P30 DK020593 (pilot and feasibility award to ESL). Support for the Vanderbilt Flow Cytometry core facility and the Vanderbilt Technologies for Advanced Genomics core facility was provided in part by a Clinical and Translational Science Award (5UL1 RR024975), the Vanderbilt Ingram Cancer Center (P30 CA68485), the Vanderbilt Vision Center (P30 EY08126), a CTSA award from the National Center for Advancing Translational Sciences (UL1 TR002243), and the National Center for Research Resources (G20 RR030956).

Availability of data and materials

The datasets used and/or analyzed during the current study are available from the corresponding author upon reasonable request. RNA sequencing data have been uploaded to ArrayExpress under the accession number E-MTAB-11691.

Declarations

Ethics approval and consent to participate

Not applicable.

Consent for publication

Not applicable.

Competing interests

The authors declare that they have no competing interests.

Author details

¹Department of Chemical and Biomolecular Engineering, Vanderbilt University, Nashville, TN, USA. ²Department of Biomedical Engineering, Vanderbilt University, Nashville, TN, USA. ³Division of Gerontology and Geriatric Medicine, Department of Medicine, University of Washington, Seattle, WA, USA. ⁴Geriatric Research Education and Clinical Center, Veterans Affairs Puget Sound Health Care System, Seattle, WA, USA. ⁵Vanderbilt Center for Stem Cell Biology, Vanderbilt University, Nashville, TN, USA. ⁶Interdisciplinary Materials Science Program, Vanderbilt University, Nashville, TN, USA. ⁷Department of Neurology, Vanderbilt University Medical Center, Nashville, TN, USA. ⁸Vanderbilt Brain Institute, Vanderbilt University Medical Center, Nashville, TN, USA. ⁹Vanderbilt Memory and Alzheimer's Center, Vanderbilt University Medical Center, Nashville, TN, USA.

Received: 4 May 2022 Accepted: 15 June 2022

Published online: 21 September 2022

References

- Banks WA, DiPalma CR, Farrell CL. Impaired transport of leptin across the blood-brain barrier in obesity. *Peptides*. 1999;20:1341–5.
- Considine RV, Sinha MK, Heiman ML, Kriauciunas A, Stephens TW, Nyce MR, et al. Serum immunoreactive-leptin concentrations in normal-weight and obese humans. *N Engl J Med*. 1996;334:292–5.
- Heymsfield SB, Greenberg AS, Fujioka K, Dixon RM, Kushner R, Hunt T, et al. Recombinant Leptin for Weight Loss in Obese and Lean Adults: A Randomized, Controlled, Dose-Escalation Trial. *JAMA*. 1999;282:1568–75.
- Van Heek M, Compton DS, France CF, Tedesco RP, Fawzi AB, Graziano MP, et al. Diet-induced obese mice develop peripheral, but not central, resistance to leptin. *J Clin Invest*. 1997;99:385–90.
- Halaas JL, Boozer C, Blair-West J, Fidathusein N, Denton DA, Friedman JM. Physiological response to long-term peripheral and central leptin infusion in lean and obese mice. *PNAS Natl Acad Sci*. 1997;94:8878–83.
- Daneman R, Prat A. The Blood-Brain Barrier. *Cold Spring Harb Perspect Biol*. 2015;7:a020412.
- Sweeney MD, Sagare AP, Zlokovic BV. Blood-brain barrier breakdown in Alzheimer disease and other neurodegenerative disorders. *Nat Rev Neurol*. 2018;14:133–50.
- Banks WA, Kastin AJ, Huang W, Jaspan JB, Maness LM. Leptin enters the brain by a saturable system independent of insulin. *Peptides*. 1996;17:305–11.
- Zlokovic BV, Jovanovic S, Miao W, Samara S, Verma S, Farrell CL. Differential regulation of leptin transport by the choroid plexus and blood-brain barrier and high affinity transport systems for entry into hypothalamus and across the blood-cerebrospinal fluid barrier. *Endocrinology*. 2000;141:1434–41.
- Faouzi M, Leshan R, Björnholm M, Hennessey T, Jones J, Münzberg H. Differential accessibility of circulating leptin to individual hypothalamic sites. *Endocrinology*. 2007;148:5414–23.
- Di Spiezio A, Sandin ES, Dore R, Müller-Fielitz H, Storck SE, Bernau M, et al. The LepR-mediated leptin transport across brain barriers controls food reward. *Mol Metab*. 2017;8:13–22.
- Bjørnbæk C, Elmquist JK, Michl P, Ahima RS, van Bueren A, McCall AL, et al. Expression of leptin receptor isoforms in rat brain microvessels. *Endocrinology*. 1998;139:3485–91.
- Banks WA, Niehoff ML, Martin D, Farrell CL. Leptin transport across the blood-brain barrier of the Koletsky rat is not mediated by a product of the leptin receptor gene. *Brain Res*. 2002;950:130–6.
- Gonzalez-Carter D, Goode AE, Fiammengo R, Dunlop IE, Dexter DT, Porter AE. Inhibition of Leptin-ObR interaction does not prevent leptin translocation across a human blood-brain barrier model. *J Neuroendocrinol*. 2016;28:78.
- Hsouchou H, Kastin AJ, Tu H, Markadakis EN, Stone KP, Wang Y, et al. Effects of cell-type specific leptin receptor mutation on leptin transport across the BBB. *Peptides*. 2011;32:1392–9.
- Dietrich MO, Spuch C, Antequera D, Rodal I, de Yébenes JG, Molina JA, et al. Megalin mediates the transport of leptin across the blood-CSF barrier. *Neurobiol Aging*. 2008;29:902–12.
- Lippmann ES, Azarin SM, Kay JE, Nessler RA, Wilson HK, Al-Ahmad A, et al. Derivation of blood-brain barrier endothelial cells from human pluripotent stem cells. *Nat Biotechnol*. 2012;30:783–91.
- Lippmann ES, Al-Ahmad A, Azarin SM, Palecek SP, Shusta EV. A retinoic acid-enhanced, multicellular human blood-brain barrier model derived from stem cell sources. *Sci Rep*. 2014;4:4160.
- Hollmann EK, Bailey AK, Potharazu AV, Neely MD, Bowman AB, Lippmann ES. Accelerated differentiation of human induced pluripotent stem cells to blood-brain barrier endothelial cells. *Fluids Barriers CNS*. 2017;14:9.
- Neal EH, Marinelli NA, Shi Y, McClatchey PM, Balotin KM, Gullett DR, et al. A simplified, fully defined differentiation scheme for producing blood-brain barrier endothelial cells from human iPSCs. *Stem Cell Reports*. 2019;12:1380–8.
- Neal EH, Katdare KA, Shi Y, Marinelli NA, Hagerla KA, Lippmann ES. Influence of basal media composition on barrier fidelity within human pluripotent stem cell-derived blood-brain barrier models. *J Neurochem*. 2021;159:980–91.
- Lippmann ES, Azarin SM, Palecek SP, Shusta EV. Commentary on human pluripotent stem cell-based blood-brain barrier models. *Fluids Barriers CNS*. 2020;17:64.
- Ohshima M, Kamei S, Fushimi H, Mima S, Yamada T, Yamamoto T. Prediction of drug permeability using in vitro blood-brain barrier models with human induced pluripotent stem cell-derived brain microvascular endothelial cells. *Biores Open Access*. 2019;8:200–9.
- Roux GL, Jarray R, Guyot A-C, Pavoni S, Costa N, Théodoro F, et al. Proof-of-concept study of drug brain permeability between in vivo human brain and an in vitro ipscs-human blood-brain barrier model. *Sci Rep*. 2019;9:16310.
- Vatine GD, Al-Ahmad A, Barriga BK, Svendsen S, Salim A, Garcia L, et al. Modeling psychomotor retardation using iPSCs from MCT8-deficient patients indicates a prominent role for the blood-brain barrier. *Cell Stem Cell*. 2017;20:831–843.e5.
- Lim RG, Quan C, Reyes-Ortiz AM, Lutz SE, Kedaigle AJ, Gipson TA, et al. Huntington's Disease iPSC-derived brain microvascular endothelial cells reveal WNT-mediated angiogenic and blood-brain barrier deficits. *Cell Rep*. 2017;19:1365–77.
- Nishihara H, Perriot S, Gastfriend BD, Steinfort M, Cibien C, Soldati S, et al. Intrinsic blood-brain barrier dysfunction contributes to multiple sclerosis pathogenesis. *Brain*. 2022;45:e019.
- Bosworth AM, Faley SL, Bellan LM, Lippmann ES. Modeling neurovascular disorders and therapeutic outcomes with human-induced pluripotent stem cells. *Front Bioeng Biotechnol*. 2017;5:87.
- Brown JA, Faley SL, Shi Y, Hillgren KM, Sawada GA, Baker TK, et al. Advances in blood-brain barrier modeling in microphysiological systems highlight critical differences in opioid transport due to cortisol exposure. *Fluids Barriers CNS*. 2020;17:38.

30. Chiou B, Neal EH, Bowman AB, Lippmann ES, Simpson IA, Connor JR. Endothelial cells are critical regulators of iron transport in a model of the human blood-brain barrier. *J Cereb Blood Flow Metab.* 2019;39:2117–31.
31. Chiou B, Neal EH, Bowman AB, Lippmann ES, Simpson IA, Connor JR. Pharmaceutical iron formulations do not cross a model of the human blood-brain barrier. *PLoS ONE.* 2018;13:e0198775.
32. Kim H, Leng K, Park J, Soretz AG, Kim S, Shostak A, et al. Reactive astrocytes transduce blood-brain barrier dysfunction through a TNF α -STAT3 signaling axis and secretion of alpha 1-antichymotrypsin. *bioRxiv.* 2022;2022.02.21.481336.
33. Weatherman RV, Fletterick RJ, Scanlan TS. Nuclear-receptor ligands and ligand-binding domains. *Annu Rev Biochem.* 1999;68:559–81.
34. Bauer B, Hartz AMS, Fricker G, Miller DS. Pregnane X Receptor up-regulation of P-glycoprotein expression and transport function at the blood-brain barrier. *Mol Pharmacol.* 2004;66:413–9.
35. Hartz AMS, Mahringer A, Miller DS, Bauer B. 17- β -Estradiol: a powerful modulator of blood-brain barrier BCRP activity. *J Cereb Blood Flow Metab.* 2010;30:1742–55.
36. Staudinger JL, Woody S, Sun M, Cui W. Nuclear-receptor-mediated regulation of drug- and bile-acid-transporter proteins in gut and liver. *Drug Metab Rev.* 2013;45:48–59.
37. Gao J, He J, Zhai Y, Wada T, Xie W. The constitutive androstane receptor is an anti-obesity nuclear receptor that improves insulin sensitivity. *J Biol Chem.* 2009;284:25984–92.
38. Dong B, Saha PK, Huang W, Chen W, Abu-Elheiga LA, Wakil SJ, et al. Activation of nuclear receptor CAR ameliorates diabetes and fatty liver disease. *PNAS.* 2009;106:18831–6.
39. He J, Gao J, Xu M, Ren S, Stefanovic-Racic M, O'Doherty RM, et al. PXR ablation alleviates diet-induced and genetic obesity and insulin resistance in mice. *Diabetes.* 2013;62:1876–87.
40. Mizee MR, Wooldrik D, Lakeman KAM, van het Hof B, Drexhage JAR, Geerts D, et al. Retinoic acid induces blood-brain barrier development. *J Neurosci.* 2013;33:1660–71.
41. Wouters E, de Wit NM, Vanmol J, van der Pol SMA, van Het Hof B, Sommer D, et al. Liver X receptor alpha is important in maintaining blood-brain barrier function. *Front Immunol.* 2019;10:1811.
42. Kim D, Paggi JM, Park C, Bennett C, Salzberg SL. Graph-based genome alignment and genotyping with HISAT2 and HISAT-genotype. *Nat Biotechnol.* 2019;37:907–15.
43. Liao Y, Smyth GK, Shi W. The Subread aligner: fast, accurate and scalable read mapping by seed-and-vote. *Nucleic Acids Res.* 2013;41:e108.
44. Robinson MD, McCarthy DJ, Smyth GK. edgeR: a Bioconductor package for differential expression analysis of digital gene expression data. *Bioinformatics.* 2010;26:139–40.
45. Liao Y, Wang J, Jaehnig EJ, Shi Z, Zhang B. WebGestalt 2019: gene set analysis toolkit with revamped UIs and APIs. *Nucleic Acids Res.* 2019;47:W199–205.
46. Kowarz E, Löscher D, Marschalek R. Optimized Sleeping Beauty transposons rapidly generate stable transgenic cell lines. *Biotechnol J.* 2015;10:647–53.
47. Nuñez JK, Chen J, Pommier GC, Cogan JZ, Replogle JM, Adriaens C, et al. Genome-wide programmable transcriptional memory by CRISPR-based epigenome editing. *Cell.* 2021;184:2503–2519.e17.
48. Thakore PI, D'ippolito AM, Song L, Safi A, Shivakumar NK, Kabadi AM, et al. Highly specific epigenome editing by CRISPR-Cas9 repressors for silencing of distal regulatory elements. *Nat Methods.* 2015;12:1143–9.
49. Horlbeck MA, Gilbert LA, Villalva JE, Adamson B, Pak RA, Chen Y, et al. Compact and highly active next-generation libraries for CRISPR-mediated gene repression and activation. *Life.* 2016;5:e19760.
50. Mátés L, Chuah MKL, Belay E, Jerchow B, Manoj N, Acosta-Sanchez A, et al. Molecular evolution of a novel hyperactive Sleeping Beauty transposase enables robust stable gene transfer in vertebrates. *Nat Genet.* 2009;41:753–61.
51. Mantle JL, Min L, Lee KH. Minimum transendothelial electrical resistance thresholds for the study of small and large molecule drug transport in a human in vitro blood-brain barrier model. *Mol Pharm.* 2016;13:4191–8.
52. Rannug U, Rannug A, Sjöberg U, Li H, Westerholm R, Bergman J. Structure elucidation of two tryptophan-derived, high affinity Ah receptor ligands. *Chem Biol.* 1995;2:841–5.
53. Lehmann JM, Moore LB, Smith-Oliver TA, Wilkison WO, Willson TM, Kliewer SA. An antidiabetic thiazolidinedione is a high affinity ligand for peroxisome proliferator-activated receptor gamma (PPAR gamma). *J Biol Chem.* 1995;270:12953–6.
54. Shimizu H, Tsuchiya T, Sato N, Shimomura Y, Kobayashi I, Mori M. Troglitazone reduces plasma leptin concentration but increases hunger in NIDDM patients. *Diabetes Care.* 1998;21:1470–4.
55. Willi SM, Kennedy A, Wallace P, Ganaway E, Rogers NL, Garvey WT. Troglitazone antagonizes metabolic effects of glucocorticoids in humans: effects on glucose tolerance, insulin sensitivity, suppression of free fatty acids, and leptin. *Diabetes.* 2002;51:2895–902.
56. Poggioli R, Ueta CB, Arrojo-Drigo R, Castillo M, Fonseca TL, Bianco AC. Dexamethasone reduces energy expenditure and increases susceptibility to diet-induced obesity in mice. *Obesity.* 2013;21:E415–20.
57. McMaster A, Ray DW. Drug Insight: selective agonists and antagonists of the glucocorticoid receptor. *Nat Rev Endocrinol.* 2008;4:91–101.
58. Stewart PM, Boulton A, Kumar S, Clark PM, Shackleton CH. Cortisol metabolism in human obesity: impaired cortisone \rightarrow cortisol conversion in subjects with central adiposity. *J Clin Endocrinol Metab.* 1999;84:1022–7.
59. Fu J, Gaetani S, Oveisi F, Verme J, Serrano A, Fonseca F, et al. Oleylethanolamide regulates feeding and body weight through activation of the nuclear receptor PPAR-alpha. *Nature.* 2003;425:90–3.
60. Laleh P, Yaser K, Alireza O. Oleylethanolamide: A novel pharmaceutical agent in the management of obesity-an updated review. *J Cell Physiol.* 2019;234:7893–902.
61. Kuiper GGJM, Lemmen JG, Carlsson B, Corton JC, Safe SH, van der Saag PT, et al. Interaction of estrogenic chemicals and phytoestrogens with estrogen receptor β . *Endocrinology.* 1998;139:4252–63.
62. Wang Y, Shoemaker R, Thatcher SE, Batifoulier-Yiannikouris F, English VL, Cassis LA. Administration of 17 β -estradiol to ovariectomized obese female mice reverses obesity-hypertension through an ACE2-dependent mechanism. *Am J Physiol Endocrinol Metab.* 2015;308:E1066–75.
63. Kliewer SA, Moore JT, Wade L, Staudinger JL, Watson MA, Jones SA, et al. An orphan nuclear receptor activated by pregnanes defines a novel steroid signaling pathway. *Cell.* 1998;92:73–82.
64. Pintor C, Loche S, Faedda A, Fanni V, Nurchi AM, Corda R. Adrenal Androgens in Obese Boys before and after Weight Loss. *Horm Metab Res.* 1984;16:544–8.
65. Pizzagalli MD, Bensimon A, Superti-Furga G. A guide to plasma membrane solute carrier proteins. *FEBS J.* 2021;288:2784–835.
66. Vanlandewijck M, He L, Mäe MA, Andrae J, Ando K, Del Gaudio F, et al. A molecular atlas of cell types and zonation in the brain vasculature. *Nature.* 2018;554:475–80.
67. Yang AC, Vest RT, Kern F, Lee DP, Agam M, Maat CA, et al. A human brain vascular atlas reveals diverse mediators of Alzheimer's risk. *Nature.* 2022;603:885–92.
68. Kurosawa T, Tega Y, Higuchi K, Yamaguchi T, Nakamura T, Mochizuki T, et al. Expression and functional characterization of drug transporters in brain microvascular endothelial cells derived from human induced pluripotent stem cells. *Mol Pharm.* 2018;15:5546–55.
69. Kurosawa T, Sako D, Tega Y, Debori Y, Tomihara Y, Aoyama K, et al. Construction and functional evaluation of a three-dimensional blood-brain barrier model equipped with human induced pluripotent stem cell-derived brain microvascular endothelial cells. *Pharm Res.* 2022;78:5.
70. Balland E, Dam J, Langlet F, Caron E, Steculorum S, Messina A, et al. Hypothalamic tanycytes are an ERK-gated conduit for leptin into the brain. *Cell Metab.* 2014;19:293–301.
71. Caro JF, Kolaczynski JW, Nyce MR, Ohannesian JP, Opentanova I, Goldman WH, et al. Decreased cerebrospinal-fluid/serum leptin ratio in obesity: a possible mechanism for leptin resistance. *The Lancet.* 1996;348:159–61.
72. Burguera B, Couce ME, Curran GL, Jensen MD, Lloyd RV, Cleary MP, et al. Obesity is associated with a decreased leptin transport across the blood-brain barrier in rats. *Diabetes.* 2000;49:1219–23.
73. Banks WA, Farrell CL. Impaired transport of leptin across the blood-brain barrier in obesity is acquired and reversible. *Am J Physiol Endocrinol Metabolism.* 2003;285:E10–5.
74. Cui J, Shen Y, Li R. Estrogen synthesis and signaling pathways during ageing: from periphery to brain. *Trends Mol Med.* 2013;19:197–209.
75. Nelson LR, Bulun SE. Estrogen production and action. *J Am Acad Dermatol.* 2001;45:1116–24.
76. Kastin AJ, Akerstrom V, Maness LM. Chronic loss of ovarian function decreases transport of leptin into mouse brain. *Neurosci Lett.* 2001;310:69–71.

77. Rehman R, Hussain Z, Faraz N. Effect of estradiol levels on pregnancy outcome in obese women. *J Ayub Medical College, Abbottabad*. 2012;24:3–5.
78. Yepuru M, Eswaraka J, Kearbey JD, Barrett CM, Raghov S, Veverka KA, et al. Estrogen Receptor- β -selective ligands alleviate high-fat diet- and ovariectomy-induced obesity in mice. *J Biol Chem*. 2010;285:31292–303.
79. Matysková R, Zelezná B, Maixnerová J, Koutová D, Haluzík M, Maletínská L. Estradiol supplementation helps overcome central leptin resistance of ovariectomized mice on a high fat diet. *Horm Metab Res*. 2010;42:182–6.
80. Shi J, Zhang YQ, Simpkins JW. Effects of 17 β -estradiol on glucose transporter 1 expression and endothelial cell survival following focal ischemia in the rats. *Exp Brain Res*. 1997;117:200–6.
81. Mahringer A, Fricker G. BCRP at the blood-brain barrier: genomic regulation by 17 β -estradiol. *Mol Pharm*. 2010;7:1835–47.
82. Chi OZ, Barsoum S, Wen Y, Liu X, Weiss HR. 17 β -Estradiol Prevents Blood-brain Barrier Disruption Induced by VEGF. *Horm Metab Res*. 2004;36:272–6.
83. Bake S, Sohrabji F. 17 β -estradiol differentially regulates blood-brain barrier permeability in young and aging female rats. *Endocrinology*. 2004;145:5471–5.
84. Na W, Lee JY, Kim W-S, Yune TY, Ju B-G. 17 β -estradiol ameliorates tight junction disruption via repression of MMP Transcription. *Mol Endocrinol*. 2015;29:1347–61.
85. Kuruca SE, Karadenizli S, Akgun-Dar K, Kapucu A, Kaptan Z, Uzum G. The effects of 17 β -estradiol on blood brain barrier integrity in the absence of the estrogen receptor alpha; an in-vitro model. *Acta Histochem*. 2017;119:638–47.
86. Tagliamonte A, DeMontis MG, Olianis M, Onali PL, Gessa GL. Possible role of insulin in the transport of tyrosine and tryptophan from blood to brain. *Adv Exp Med Biol*. 1976;69:89–94.
87. Sankar R, Domer FR, Kastin AJ. Selective effects of alpha-MSH and MIF-1 on the blood-brain barrier. *Peptides*. 1981;2:345–7.
88. Banks WA, Kastin AJ. Modulation of the carrier-mediated transport of the Tyr-MIF-1 across the blood-brain barrier by essential amino acids. *J Pharmacol Exp Ther*. 1986;239:668–72.
89. Albrecht LV, Ploper D, Tejeda-Muñoz N, De Robertis EM. Arginine methylation is required for canonical Wnt signaling and endolysosomal trafficking. *Proc Natl Acad Sci U S A*. 2018;115:E5317–25.
90. Daneman R, Agalliu D, Zhou L, Kuhnert F, Kuo CJ, Barres BA. Wnt/beta-catenin signaling is required for CNS, but not non-CNS, angiogenesis. *Proc Natl Acad Sci U S A*. 2009;106:641–6.
91. Stenman JM, Rajagopal J, Carroll TJ, Ishibashi M, McMahon J, McMahon AP. Canonical Wnt signaling regulates organ-specific assembly and differentiation of CNS vasculature. *Science*. 2008;322:1247–50.
92. Liebner S, Corada M, Bangsow T, Babbage J, Taddei A, Czupalla CJ, et al. Wnt/beta-catenin signaling controls development of the blood-brain barrier. *J Cell Biol*. 2008;183:409–17.
93. Tran KA, Zhang X, Predescu D, Huang X, Machado RF, Göthert JR, et al. Endothelial β -catenin signaling is required for maintaining adult blood-brain barrier integrity and central nervous system homeostasis. *Circulation*. 2016;133:177–86.
94. Stoll J, Wadhwani KC, Smith QR. Identification of the cationic amino acid transporter (System y+) of the Rat Blood-Brain Barrier. *J Neurochem*. 1993;60:1956–9.
95. Rajapakse NW, Karim F, Straznický NE, Fernandez S, Evans RG, Head GA, et al. Augmented endothelial-specific L-arginine transport prevents obesity-induced hypertension. *Acta Physiol (Oxf)*. 2014;212:39–48.
96. Shi M, Chen B, Mahajan D, Boh BK, Zhou Y, Dutta B, et al. Amino acids stimulate the endosome-to-Golgi trafficking through Ragulator and small GTPase Arl5. *Nat Commun*. 2018;9:4987.

Publisher's Note

Springer Nature remains neutral with regard to jurisdictional claims in published maps and institutional affiliations.

Ready to submit your research? Choose BMC and benefit from:

- fast, convenient online submission
- thorough peer review by experienced researchers in your field
- rapid publication on acceptance
- support for research data, including large and complex data types
- gold Open Access which fosters wider collaboration and increased citations
- maximum visibility for your research: over 100M website views per year

At BMC, research is always in progress.

Learn more biomedcentral.com/submissions

