

Dysregulation of Wnt inhibitory factor 1 (Wif1) expression resulted in aberrant Wnt- β -catenin signaling and cell death of the cloaca endoderm, and anorectal malformations

RC-L Ng^{1,2,7}, D Matsumaru³, AS-H Ho¹, M-M Garcia-Barceló^{1,2}, Z-W Yuan⁴, D Smith⁵, L Kodjabachian⁶, PK-H Tam^{1,2}, G Yamada³ and VC-H Lui^{*,1,2}

In mammalian urorectal development, the urorectal septum (urs) descends from the ventral body wall to the cloaca membrane (cm) to partition the cloaca into urogenital sinus and rectum. Defective urs growth results in human congenital anorectal malformations (ARMs), and their pathogenic mechanisms are unclear. Recent studies only focused on the importance of urs mesenchyme proliferation, which is induced by endoderm-derived Sonic Hedgehog (Shh). Here, we showed that the programmed cell death of the apical urs and proximal cm endoderm is particularly crucial for the growth of urs during septation. The apoptotic endoderm was closely associated with the tempo-spatial expression of Wnt inhibitory factor 1 (Wif1), which is an inhibitor of Wnt- β -catenin signaling. In *Wif1^{lacZ/lacZ}* mutant mice and cultured urorectum with exogenous Wif1, cloaca septation was defective with undescended urs and hypospadias-like phenotypes, and such septation defects were also observed in *Shh^{-/-}* mutants and in endodermal β -catenin gain-of-function (GOF) mutants. In addition, *Wif1* and *Shh* were expressed in a complementary manner in the cloaca endoderm, and *Wif1* was ectopically expressed in the urs and cm associated with excessive endodermal apoptosis and septation defects in *Shh^{-/-}* mutants. Furthermore, apoptotic cells were markedly reduced in the endodermal β -catenin GOF mutant embryos, which counteracted the inhibitory effects of Wif1. Taken altogether, these data suggest that regulated expression of Wif1 is critical for the growth of the urs during cloaca septation. Hence, Wif1 governs cell apoptosis of urs endoderm by repressing β -catenin signal, which may facilitate the protrusion of the underlying proliferating mesenchymal cells towards the cm for cloaca septation. Dysregulation of this endodermal Shh-Wif1- β -catenin signaling axis contributes to ARM pathogenesis.

Cell Death and Differentiation (2014) 21, 978–989; doi:10.1038/cdd.2014.20; published online 14 March 2014

Urorectal development starts at gestational week-4 in humans and at E10.5 in mice, and is divided into three phases: genital tubercle (GT) outgrowth, cloaca septation and urethra tubularization. GT outgrowth is initiated with a paired genital swellings on either side of the cloaca (caudal end of the rectum), which fuse medially to form the future external genitalia. Cloaca septation is the partitioning of the cloaca by urorectal septum (urs) into the rectum and urogenital sinuses (ugs). Urorectal development is indistinguishable in male and female embryos before urethra tubularization. Defective urorectal development results in a number of congenital anomalies frequently accompany with deficient excretory and copulatory functions, greatly influencing the patients' quality of life. In particular, the anorectal malformations (ARMs) are the

most common urorectal defects and affect boys and girls with an incidence of 2–5 in 10 000 live births,^{1,2} but its pathogenic mechanisms are poorly understood. ARM phenotypes are also partly included in several diseases, such as Currarino syndromes, Townes Brocks Syndromes and VACTERL complex, and these patients display other anomalies including anal fistula, sacral malformations and renal malformations.^{3–6}

During cloaca septation, the urs, an endoderm-lined mesenchyme, elongates from the ventral body wall to the cloaca membrane (cm) (Figure 1a). The proximal cm is regressing when the apical urs endoderm approximates to the cm leading to the formation of the urethral duct (ud) and the anal opening, which signifies the completion of cloaca septation (Figure 1b). After septation, the cm regression

¹Department of Surgery, Li Ka Shing Faculty of Medicine, The University of Hong Kong, Hong Kong SAR, China; ²Centre of Reproduction, Development and Growth, Hong Kong SAR, China; ³Department of Developmental Genetics, Institute of Advanced Medicine, Wakayama Medical University, Wakayama, Japan; ⁴Key Laboratory of Health Ministry for Congenital Malformation, Shengjing Hospital, China Medical University, Shenyang, China; ⁵Department of Microbiology, Li Ka Shing Faculty of Medicine, The University of Hong Kong, Hong Kong SAR, China and ⁶Aix-Marseille Université CNRS UMR 7288, Institut de Biologie du Développement de Marseille, Marseille, France

*Corresponding author: VC-H Lui, Department of Surgery, Li Ka Shing Faculty of Medicine, The University of Hong Kong, 21 Sassoon Road, Pok Fu Lam, Hong Kong SAR, China. Tel: +852 2819 9607; Fax: +852 2819 9621; E-mail: vchlui@hku.hk

⁷First author.

Abbreviations: ARMs, anorectal malformations; Ao, anal opening; BMP, bone morphogenetic protein; Cl, cloaca; Cm, cloaca membrane; Dkk, dickkopf; dUE, distal urethral epithelium; fn, frontal nasal; GOF, gain of function; GT, genital tubercle; HI, hindlimb; LOF, loss of function; Pf, preputial fold; Re, rectum; Shh, sonic hedgehog; T, tail; Tg, tailgut; Ud, urethral duct; Ugs, urogenital sinus; Urs, urorectal septum; Wif1, Wnt inhibitory factor 1; Wnt, Wingless

Received 04.6.13; revised 29.10.13; accepted 13.11.13; Edited by M Piacentini; published online 14.3.14

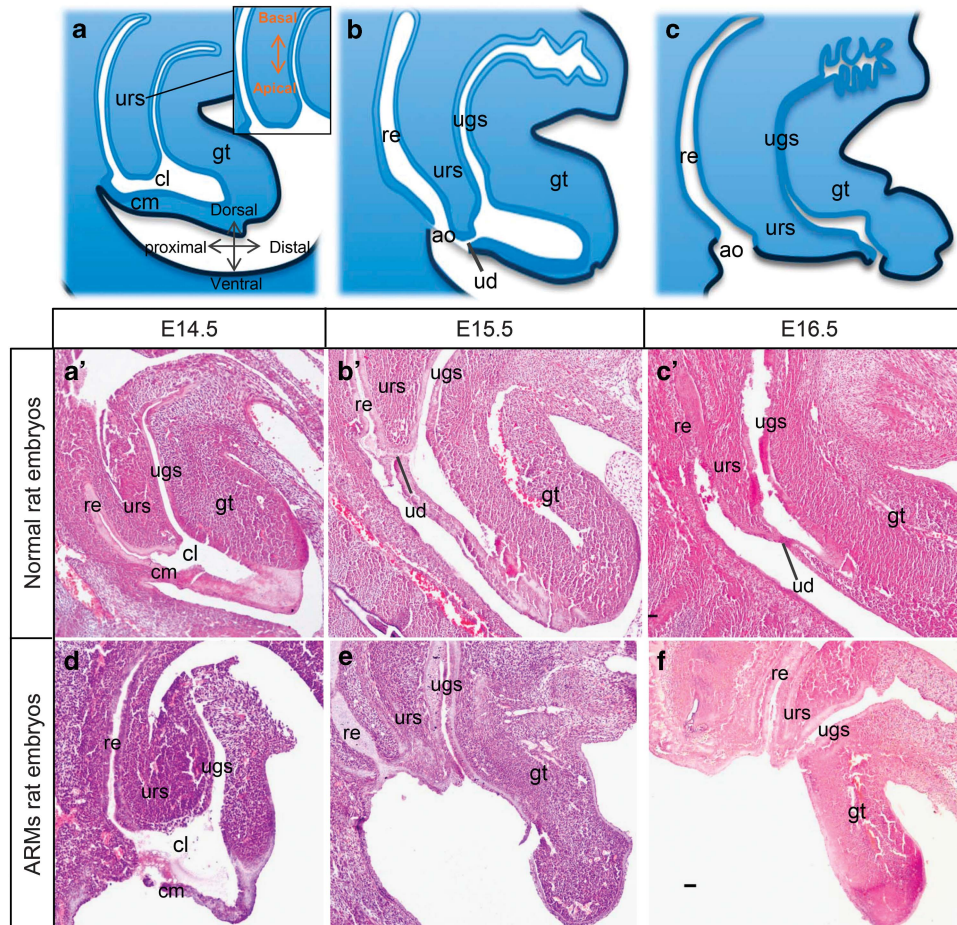


Figure 1 Descent of the urorectal septum and regression of the cloaca membrane during cloaca septation. Schematic diagram of cloaca development showing the descent of urs and regression of proximal cm leads to anal opening after cloaca septation (a–c). Normal cloaca development in rat embryos from E14.5 to E16.5 (a'–c'). Rat treated with ethylenethiourea displayed persistent cloaca at E14.5 (d; $n = 12$), hypospadias-like phenotypes with incomplete cloaca septation at E15.5 (e; $n = 15$) and E16.5 (f; $n = 9$). Scale bar: 50 μm

associated with the proximal-to-distal urs elongation coupled with fusion of the preputial fold mesoderm along the ventral midline of the tubercle leads to the formation of urethral opening at the distal end of the GT (Figure 1c).

Deletion of *Shh*, *Wnt5a* or *Bmp7* in mouse embryos resulted in reduced proliferation of the urs mesenchyme, incomplete urs elongation and septation defects.^{7–10} In addition, the cm was either disintegrated or remained intact in these null embryos, giving rise to hypospadias-like or persistent cloaca phenotypes (Figure 1). Nonetheless, deletion of these genes not only leads to a decrease in cell proliferation but also affect cell apoptosis.^{11,12}

Shh and Wnt signaling are indispensable for the septation process. *Shh* is expressed in the cloaca endoderm and mediates the proliferation of urs mesenchyme through *Gli2*. *Shh* and *Gli2* mutants displayed persistent cloaca. However, deletion of *Shh* eradicated the cm, exposing the unseptated cloaca exteriorly, whereas the cm remained intact in the loss of *Gli2*.^{7,13} *Wnt5a* is crucial for urorectal development and regulates the outgrowth of GT.^{8,10} Studies suggest that Wnt- β -catenin signaling activity is tightly regulated in urorectal development.^{14,15} Furthermore, β -catenin expression was

downregulated in *Shh* mutants.¹⁶ Constitutive activated β -catenin in *Shh* null background can partially rescue defective development of the GT and the cm.^{11,16} All these indicated that Wnt- β -catenin signaling functions downstream of *Shh*. How Wnt signaling is regulated during cloaca septation has not been investigated.

Wif1 (Wnt inhibitory factor 1) is a secreted Wnt inhibitor, which exerts its inhibitory effect on Wnt signaling by binding directly to Wnt ligands and by preventing the ligands from binding to their cell surface receptors. The presence of Wif1 leads to β -catenin degradation, thereby turning off Wnt- β -catenin signaling.¹⁷ Most of the recent studies focused on the impact of epigenetic silencing of *Wif1* in various carcinomas,¹⁸ and restoration of Wif1 activity in cancer cells induced apoptosis of malignant cancers.¹⁹ By contrast, reports on the regulatory functions of Wif1 in embryonic development are limited. Previous study suggested that Wif1 has high affinity to Wnt3a, Wnt4, Wnt5a, Wnt7a, Wnt9a and Wnt11,²⁰ and Wif1 regulated chondrogenesis in cartilage-mesenchyme interfaces via the inhibition of Wnt3a-mediated mesenchyme growth in embryos.²¹ A recent study revealed that expression of Wif1 is androgen responsive in prostate bud formation.

Loss of *Wif1* in prostate glands induced ectopic expression of other secretory Wnt inhibitors to compensate for the loss of *Wif1* activity in these mutants.²² Furthermore, Smad1 directly targets the *Wif1* promoter and controls *Wif1* gene expression in lung epithelial cell development.²³ Taken all these indicated that Wnt- β -catenin signaling is precisely regulated in a number of embryonic developmental processes, and *Wif1* modulates the Wnt- β -catenin signaling activity.

In this study, we discovered that the finely regulated expression of *Wif1* is crucial for cloaca septation, and dysregulated *Wif1* expression caused septation defects. *Shh* and *Wif1* were expressed in a complementary manner at the cloaca endoderm, and deletion of *Shh* induced ectopic *Wif1* expression, associated with excessive endoderm apoptosis and septation defects. Comparable septation defects were observed in *Wif1^{lacZ/lacZ}* mutant mice, in cultured urorectum with exogenous *Wif1*, in *Shh^{-/-}* mutants and in endodermal β -catenin GOF mutants. In conclusion, this study suggests that *Wif1* regulates endodermal cell apoptosis by mediating and regulating Shh-Wnt- β -catenin signaling, thus having an essential role during urorectal development.

Results

Wif1 is required for urorectal development. To assess the requirement of *Wif1* in urorectal development, we examined the urorectal development in a transgenic knock-in mouse *Wif1^{lacZ/lacZ}*.¹⁸ In the crossing of *Wif1^{lacZ/lacZ}* mice, we repeatedly observed resorption of around 50% of embryos indicative of early embryo lethality (Supplementary Table 1). More importantly, about 5% of *Wif1^{lacZ/lacZ}* mutants displayed gross anomalies including limb deformities, cranio-facial abnormalities and urorectal defects (Supplementary Figure 1). In *Wif1^{lacZ/lacZ}* mutants, the external genitalia

development was perturbed, and the ventral midline genital tubercle was malformed (Figures 2d and e). An apparent large hollow cloaca existed with cm disintegration (Figure 2f). It is therefore apparent that loss of *Wif1* impedes normal urorectal development.

Wif1 is dynamically expressed in the midline cloaca endoderm and complementary expressed with Shh during septation.

To study the expression patterns of *Wif1* in the developing cloaca, we performed immunohistochemical (IHC) staining on normal embryos and enzymatic staining for β -galactosidase of *Wif1^{lacZ/lacZ}* embryos. *Wif1* expression was first detected at the apical urs endoderm and cm at E11 (Figure 3a). Its expression level increased sharply in these regions by E12.5 when the urs endoderm was about to fuse with the cm. Apart from the cloaca endoderm, *Wif1* was also expressed at the distal GT endoderm and the apical genital mesenchyme (Figure 3b). By E13.5, *Wif1* expression decreased markedly after septation and the formation of urethral duct (ud) (Figure 3c). The expression pattern of *Wif1* was also reconfirmed by β -galactosidase staining of *Wif1^{lacZ/lacZ}* embryos (Supplementary Figure S2).

Shh-expressing endoderm cells contribute to the entire urethra and hindgut.²⁴ To investigate *Shh* expression pattern of these endoderm derivatives, we performed ISH and discovered that *Shh* was differentially expressed in the cloaca endoderm during cloaca septation. *Shh* was expressed in the cloaca endoderm by E11, whereas only weak *Wif1* expression was detected (Figure 3d). By E12.5, *Shh* was expressed weakly in the apical urs endoderm and proximal cm endoderm, whereas *Wif1* was strongly expressed (Figure 3e). After the septation was completed at E13.5, *Shh* expression remained weak in the apical urs endoderm and in the proximal cm (Figure 3f). In contrast, no *Wif1*

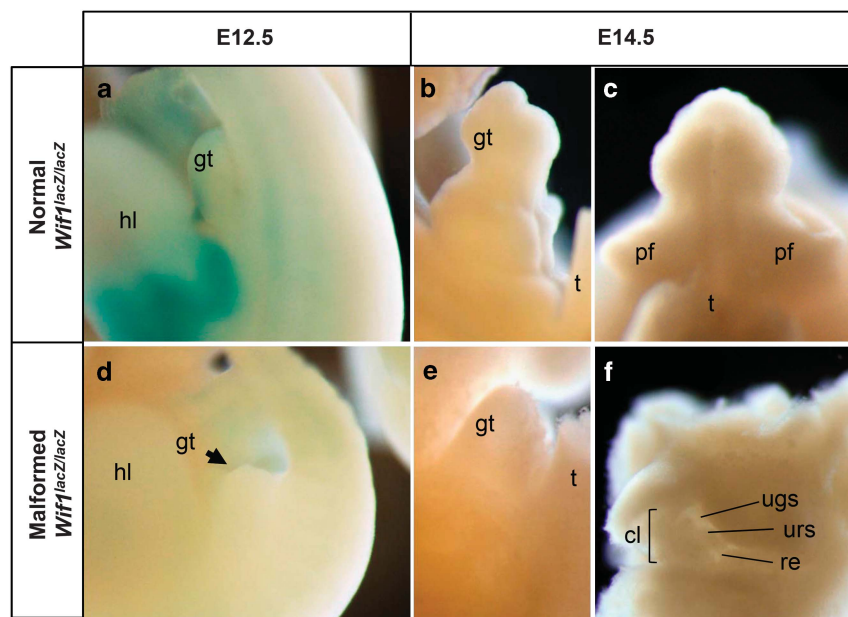


Figure 2 *Wif1* is crucial in urorectal development. Normally developed genital tubercle of *Wif1^{lacZ/lacZ}* embryos at E12.5 (a) and E14.5 (b, c). Defective *Wif1^{lacZ/lacZ}* embryos displayed perturbation of GT outgrowth and malformed genital tubercle at E12.5 (d) and E14.5 (e). Ventral view of the malformed GT at E14.5 showed the unseptated cloaca with a large hollow space and degraded ventral cloaca membrane (f)

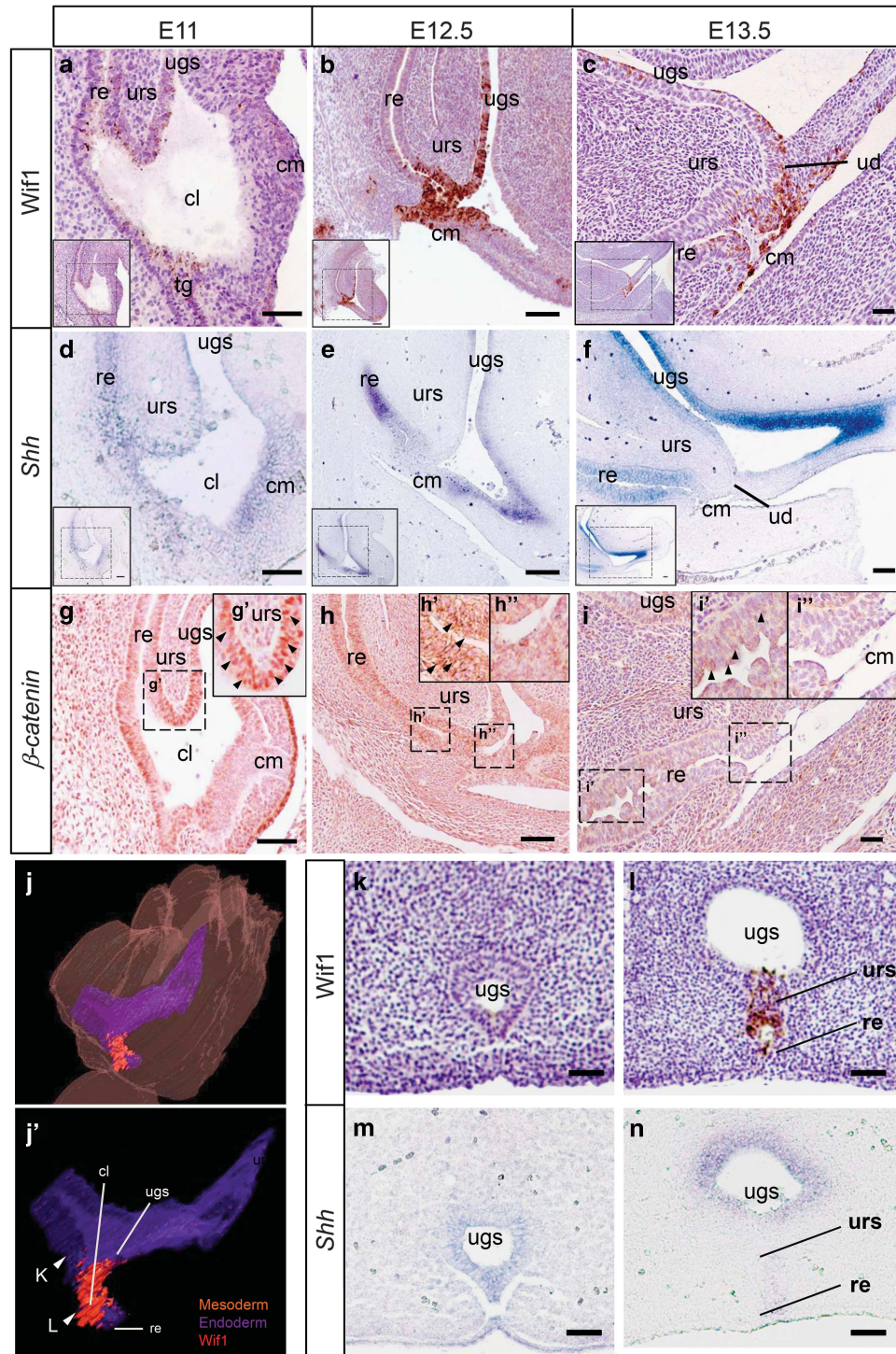


Figure 3 Complementary expression pattern of *Wif1* and *Shh* in the cloaca endoderm. *Wif1* expression (brown) at the tip of the urs endoderm and the proximal cloaca membrane epithelium was increased from E11 (a) to E12.5 (b) before septation but reduced drastically at E13.5 (c). *Shh* expression (purple) in the cloaca endoderm and rectum endoderm showed a complementary expression pattern with *Wif1*. *Shh* was expressed at the entire cloaca endoderm by E11 (d). *Shh* was expressed at a very low level in urs and cloaca membrane endoderm, whereas *Wif1* was expressed strongly at E12.5 (e) and E13.5 (f). Nuclear β -catenin immuno-reactivity (arrowheads) was localized in the apical urs endoderm when *Wif1* expressed weak at E11 (g and g'). At E12.5 and E13.5, nuclear β -catenin immuno-reactivity was only detected in the basal urs endoderm (arrowheads) (h, h' and i, i') but not in the apical urs endoderm (h'' and i''). 3D reconstruction of *Wif1* expression domains at E12.5 showed *Wif1* expression in the midline of the septating cloaca (j and j'). Coronal sections of the distal and proximal region of the genital tubercle showed that *Wif1* was not expressed in the distal midline ugs endoderm (k) but in the proximal midline endoderm (l). Expression of *Shh* was detected in the entire distal ugs endoderm (m), but its expression was absent in the proximal midline endoderm (n). White arrowheads indicate the plane of coronal sections. Regions highlighted were magnified as shown. Scale bar: 50 μ m

expression was detected in the endoderm, whereas *Shh* was strongly expressed. This indicates that *Shh* and *Wif1* were expressed in a complementary manner in the cloaca endoderm from E11.5 to E13.5.

A 3-dimensional expression analysis revealed that the expression domains of *Wif1* were localized at the midline cloaca endoderm of the canal connecting the urogenital sinus (ugs) and the rectum (re) of E12.5 urorectum (Figures 3j and j'). *Shh* was expressed in the entire distal ugs endoderm, whereas *Wif1* was not expressed (Compare Figures 3k and m). In the cloaca, *Shh* was strongly expressed in the bilateral ugs endoderm but weakly at the midline urs endoderm and hg endoderm (Figure 3n). This indicated that there is tight complementary expression of *Shh* and *Wif1* in the midline cloaca endoderm.

Restricted expression of *Wif1* in the cloaca endoderm prompted us to examine whether Wnt signaling was suppressed in those *Wif1*-expressing regions. Immunostaining revealed that nuclear β -catenin was detected in the apical urs endoderm at E11 when *Wif1* was weakly expressed (Figures 3g and g'). By E12.5 and E13.5, nuclear β -catenin signals were markedly reduced in the apical urs endoderm and proximal cm endoderm where *Wif1* was strongly expressed (Figures 3h, h'', l, i'). It is highly possible that the reduction in nuclear β -catenin was due to the inhibitory effect of *Wif1* during septation.

Next, we examined whether a deletion of *Shh* would affect *Wif1* expression in the cloaca endoderm. Staged deletion of *Shh* in embryos elicited different urorectal defects ranging from external genitalia agenesis, persistent cloaca to hypospadias-like phenotypes.¹³ Deletion of *Shh* in embryos induced ectopic and precocious expressions of *Wif1* in the urs endoderm and cm endoderm by E11.5 (Figure 4b). Cyclopamine inhibits Hh signaling by inactivating the transmembrane protein, Smoothed (Smo) and blockage of *Shh* in the GT explant caused GT agenesis.^{25–27} We could verify that cyclopamine induced GT outgrowth retardation and unseptated cloaca. More importantly, *Wif1* was ectopically expressed in the entire cloaca endoderm and the surface ectoderm of cyclopamine-cultured urorectum (Figure 4h). In addition, both cytoplasmic and nuclear β -catenin immunostaining were further decreased in the *Wif1*-expressing endoderm in *Shh* mutant embryos (Figure 4f). Thus, disruption of *Shh* signaling disturbed the unique temporal spatial pattern of expression of *Wif1* in the cloaca endoderm, in associate with defective urorectal development.

Wif1 inhibited endodermal Wnt- β -catenin signaling and led to cloaca septation defects. Active Wnt- β -catenin signaling can be localized by using a reporter transgenic mouse *Topgal^{LacZ}*. By E12.5, *LacZ*-positive cells indicated that Wnt- β -catenin signaling was active in the distal urethral epithelium (dUE). The Wnt- β -catenin signaling was absent in the proximal cm (Figure 5a). After septation was completed by E13.5, *LacZ* staining was even stronger in the dUE, but the proximal cm still remained *LacZ*-negative (Figure 5b).

To assess the impact of *Wif1* on Wnt activity in urorectal epithelium and urorectal development, we cultured the E12 *Topgal^{LacZ/+}* urorectum with exogenous mouse *Wif1* protein for 24 h. Upon increasing doses of *Wif1* protein, *LacZ*-positive

cells were reduced in the dUE (Figure 5c). In the titration analysis, 2.5 μ g/ml of *Wif1* protein induced a marked reduction in *LacZ* activity in the dUE. We therefore repeated the culture with the *Wif1* protein (2.5 μ g/ml) and increased the incubation time to 36 h to examine whether exogenous *Wif1* protein affected septation. Addition of *Wif1* protein to the culture induced cm disintegration (Figure 5e), which was similar to the cm degradation defects in *Shh*^{-/-} mutant embryos.⁸

Increased *Wif1* expression enhanced cell apoptosis leading to cloaca membrane disintegration.

The cm is several cells thick at E10.5–11.5, the regressing proximal cm becomes a one-cell-thick epithelium by E13.5, and subsequently the proximal cm degenerates leading to the formation of the anal opening and the urethral duct. *Wif1* expression was detected in the degrading proximal cm. This observation prompted us to study whether programmed cell death was linked to the proximal cm degradation and *Wif1* expression. We performed TUNEL staining and immunofluorescence for *Wif1* on mid-sagittal sections of the developing urorectum. Apoptotic cells were detected not only in the proximal cm but also in the apical urs endoderm. The number of apoptotic cells increased from E11.5 to E12.5 before septation (Figures 6c and g). *Wif1*-expressing cells in the cloaca endoderm were also TUNEL positive throughout the septation process from E11.5 to E13.5 (Figures 6d, h and l). Once the rectum was separated from the urogenital sinus, the number of apoptotic cells decreased and fewer cells showed *Wif1* expression. These results suggested that *Wif1* expression pattern was closely associated with cell apoptosis in the cloaca during septation.

Given that inactivation of *Shh* and abnormal expression of *Wif1* caused disintegration of the cm, we tested whether endodermal apoptosis increased in response to the precocious expression of *Wif1* in *Shh*^{-/-} mutant embryos. TUNEL staining and immunofluorescence staining for *Wif1* indicated that cell apoptosis was increased in the cm of *Shh*^{-/-} mice, where ectopic *Wif1* expression was localized (Figures 7a and b). The cm disintegration in *Shh*^{-/-} mutant embryos at E13.5 could be due to elevated cell apoptosis of the cm at the early stage of urorectal development (Figures 7c and d). This suggested that precocious *Wif1* expression in cm led to early cm disintegration resulting in perineal urethra.

To study whether Wnt- β -catenin activity determines cell apoptosis in the cloaca endoderm, we used the *Shh^{creERT2/+}; β -cat^{fllox}* embryos and *Shh^{creERT2/+}; β -cat^{fllox(ex3)}* to examine the requirement of Wnt- β -catenin signaling on endodermal cell death during septation. *β -cat^{fllox}* embryos contain two *loxP* sites flanking exon 3 and 6, and β -catenin loss-of-function (LOF) mutant was generated upon cre recombination. Constitutive active *β -catenin^{lox(ex3)}* mutants (β -catenin gain-of-function (GOF)) served as a tool for studying the effects of increased endogenous β -catenin. LOF and GOF mutants were analyzed at E18.5 for urorectal development subsequent to TM treatment at E9.5. TM treatment at E9.5 induced robust Cre-recombination in the urs endoderm and the dUE (co-submitted MS: Miyagawa *et al.*). Both urs endodermal β -catenin loss-of-function (LOF) and gain-of-function (GOF) mutants induced by TM treatment at E9.5 displayed cleft-like phenotypes in their perineal region, but the growth of urs was

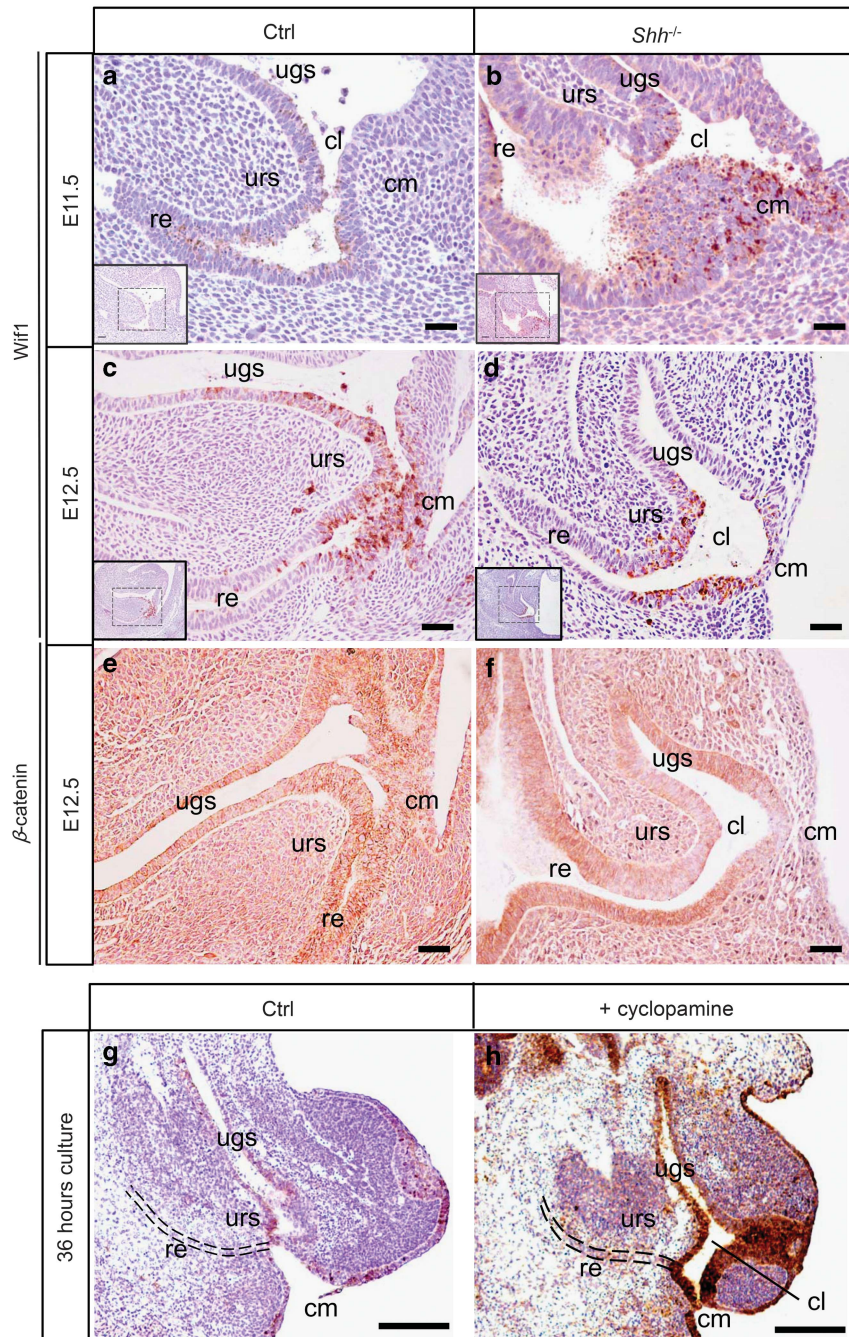


Figure 4 *In vivo* and *in vitro* deletion of *Shh* elevated *Wif1* expression. *Wif1* was weakly expressed at E11.5 in control littermates (a). Deletion of *Shh* induced precocious *Wif1* expression in the cloaca membrane endoderm and cloaca canal endoderm at E11.5 (b). By E12.5, a similar expression pattern of *Wif1* was observed in both control (c) and *Shh* mutant embryos (d). However, the cm in *Shh* mutant was much thinner than the control embryo. Both cytoplasmic and nuclear β -catenin immunoreactivity decreased markedly in *Shh* mutant embryo (f) as compared with the control littermate (e). *In vitro* inhibition of *Shh* signaling by cyclopamine induced ectopic expression of *Wif1* in the entire cloaca endoderm and surface ectoderm of the GT explant (h; $n = 5$) compared with the control (g). Scale bar: 50 μ m

not similarly affected in these mutants (co-submitted MS: Miyagawa *et al.*). The urs descended relatively normally and protruded out of the cloaca in the LOF mutants, but the urs failed completely to descend in the GOF mutants. As revealed by TUNEL staining, the number of apoptotic cells in the urs endoderm of β -catenin LOF mutants was comparable to that of control embryos (Figure 7f). At E11.5, the high level of endogenous *Wif1* probably caused degradation of β -catenin

and hence a very low level of β -catenin activity in the apical urs endoderm. Therefore, it was not unexpected that further deletion of β -catenin in the endoderm displayed no drastic effect on the apoptosis of these endoderm cells of β -catenin LOF mutants. By contrast, TUNEL-positive apoptotic cell were absent in the urs endoderm of the β -catenin GOF mutants (Figure 7g). Hyperactivation of Wnt- β -catenin signaling in the cloaca endoderm promoted cell survival.

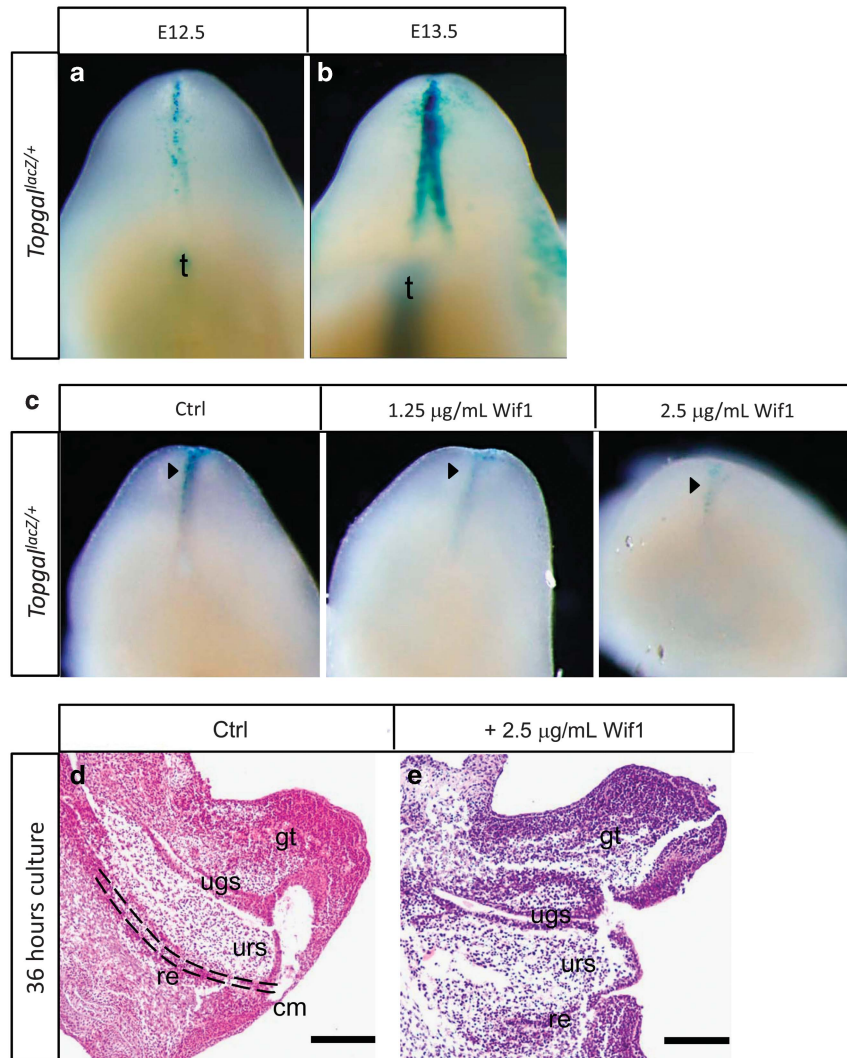


Figure 5 Exogenous Wif1 suppressed Wnt- β -catenin signaling in the developing midline urorectum. β -gal-positive cells in *Topgal^{lacZ/+}* embryos were localized at the distal urethral epithelium at E12.5 (a) and E13.5 (b). GT explant from the *Topgal^{lacZ/+}* embryos at E12 were cultured for 24 h with increasing concentrations of Wif1 protein. The number of β -gal-positive cells (arrowheads) decreased in explants cultured with higher concentration of Wif1 proteins (c). GT from the E12 *Topgal^{lacZ/+}* embryos cultured for 36 h with exogenous Wif1 (1.5 μ g/ml) displayed cloaca membrane disintegration and un-septated cloaca (e) compared with the control (d). Scale bar: 50 μ m

This supports our hypothesis that Wif1 inhibits Wnt signaling to induce apoptosis of the apical urs endoderm.

Discussion

Reciprocal interactions between the urs endoderm and the neighboring mesenchyme are critical for the urs development and cloaca septation. Endoderm-derived Shh integrates with Wnt- β -catenin signaling to regulate GT and urs development (co-submitted MS: Miyagawa *et al.*).¹⁴ However, it is not known how these two pathways coordinate to regulate the urs development for cloaca septation.

This study indicates that the elongation of the urs, regression of the cm and the formation of an anal opening depend on the activity of canonical Wnt signaling, which is regulated by Wif1, downstream of Shh in the urs endoderm. Disruption of these activities in mice dysregulates endodermal apoptosis and arrests the septation event causing cloacal

defects, resembling human congenital anorectal malformations (ARMs).

Temporal-spatial expression of Wif1 is crucial for cloaca septation. The temporal-spatial expression of Wif1 at the midline cloaca endoderm of the canal linking the urogenital sinus and the rectum closely correlates with key events for cloaca septation including descent of the urs, midline fusion of the urs endoderm with the cm endoderm and degradation of the proximal cm.

Wif1 expression pattern associates with programmed cell death in the apical urs endoderm and the cm during septation. Colocalization of Wif1 expression and apoptosis was also observed in developing vertebrae and interdigit mesenchyme of the developing limb bud (data not shown), suggesting a causal relationship of Wif1 and programmed cell death during embryonic development. Furthermore, pro-apoptotic function of Wif1 has also been reported in cancer cells.¹⁹ Thus, ectopic

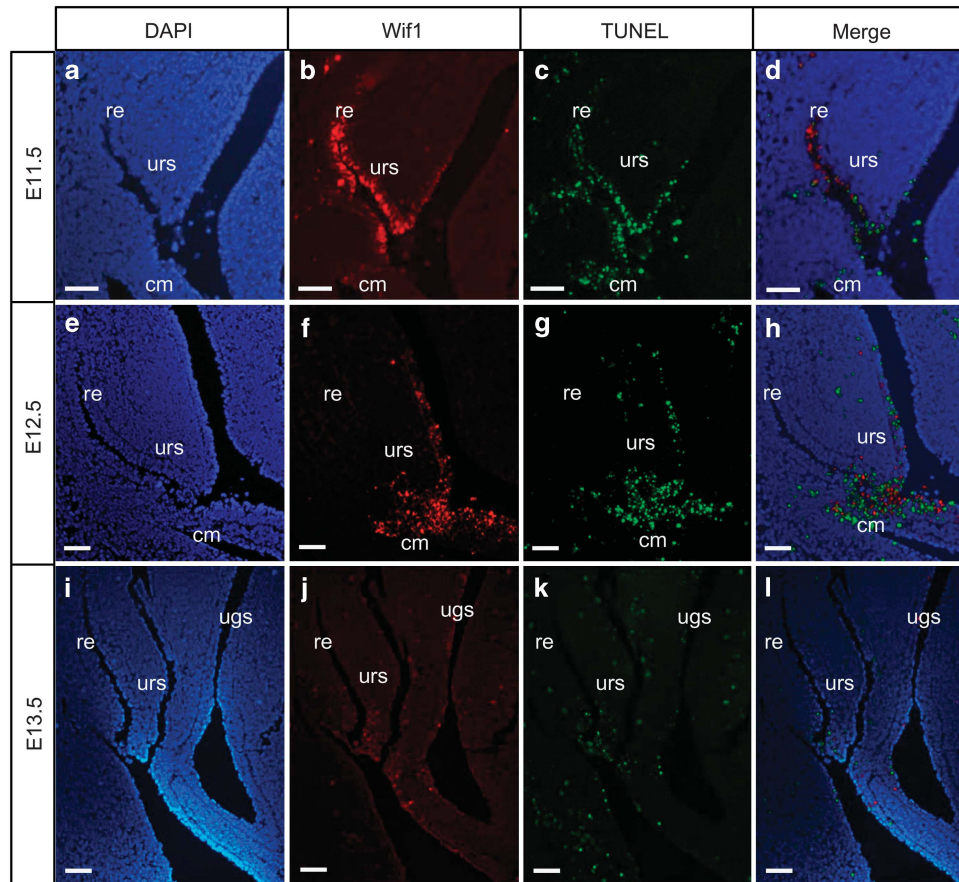


Figure 6 Wif1 colocalized with apoptotic endoderm cells during cloaca septation. AntiWif1 staining (Red) and TUNEL staining (Green) were colocalized in the urs tip endoderm and proximal cloaca membrane epithelium of the septating cloaca from E11.5 to E12.5 (a–h). The number of apoptotic cells decreased after cloaca septation together with the decrease in Wif1 expression level in the cloaca endoderm at E13.5 (i–l). Scale bar: 50 μ m

and precocious Wif1 expression in *Shh*^{-/-} urorectal region and cyclopamine-treated urorectum explant could induce aberrant programmed cell death of the cloaca and contribute to developmental defects of the urs and cm. We also discovered that ETU-induced ARMs rat embryos displayed ectopic Wif1 expression in the cloaca endoderm (Supplementary Figure S3). Taken together, these data indicated that finely regulated Wif1 expression is crucial for cloaca septation, ectopic Wif1 expression was linked to aberrant programmed cell death of the cloaca endoderm and extirpated cm disintegration and mal-developed urs.

Wif1 expression associated with the reduction in nuclear β -catenin of the apical urs endoderm and proximal cm, and Wif1 caused a reduction in the X-gal activity of *Topgal*^{lacZ} urorectum, indicating that Wif1 inhibited Wnt- β -catenin signaling in the developing urorectum. Wnt- β -catenin signaling promotes survival, whereas inhibition of Wnt- β -catenin signaling induced programmed cell death.^{28–30} A recent publication also indicated that secreted Wnt inhibitors promote apoptosis in embryonic development.³¹ Therefore, the ectopic and precocious expression of Wif1 in E11.5 *Shh*^{-/-} embryos and cyclopamine-treated urorectum explant inhibited the Wnt- β -catenin signaling leading to aberrant cell death of the cloaca endoderm and the cm. The importance of the Wif1-mediated urs endodermal Wnt- β -catenin activity and

cell death for cloaca septation was further supported by the lack of urs endodermal cell death and septation defects in β -catenin GOF mutants. Concomitantly with the ectopic induction of endoderm Wif1 expression in *Shh*^{-/-} mutant, β -catenin signaling has also been shown to be reduced in the endoderm.¹⁶ In the E11.5 β -catenin GOF mutant embryos, the apical urs endoderm did not undergo apoptosis, instead the apical urs endoderm proliferated, and the urs failed to elongate to septate the cloaca (this study and co-submitted MS: Miyagawa *et al.*). The proliferation of the urs mesenchyme was only reduced at the later stage of septation at E13.5 in GOF mutants (co-submitted MS: Miyagawa *et al.*), suggesting that the proliferating urs mesenchyme *per se* was not sufficient to drive the early descent of urs. Therefore, midline cloaca endodermal cell death contributed to the septation process, and Wif1 induced programmed cell death by inhibiting Wnt- β -catenin activity.

A proportion of *Wif1*^{-/-} mutant mice are normal and fertile, but develop bone tumors.¹⁸ This study showed that deletion of *Wif1* caused early embryo lethality and anomalies in tissues that expressed Wif1 including the urorectum, albeit at incomplete penetrance, which indicated critical functions of Wif1 in embryo development. *Wif1*^{lacZ/lacZ} mutants are genetically equivalent to the β -catenin GOF in urs, and perineal cleft phenotype of β -catenin GOF mutants are also

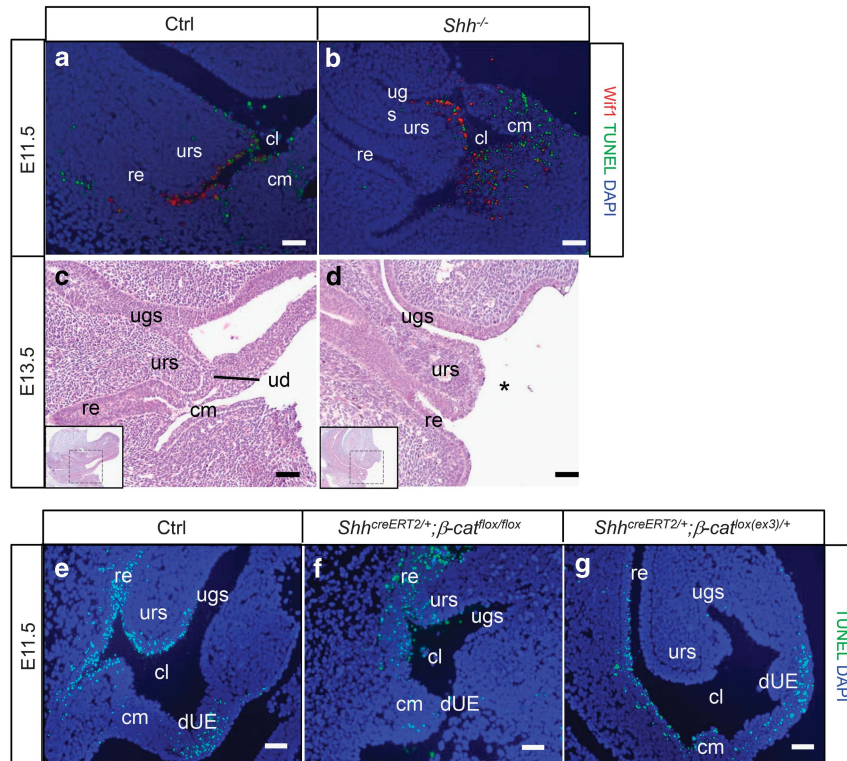


Figure 7 Elevation of *Wif1* expression increased cell apoptosis in the cloaca endoderm through Wnt- β -catenin signaling. *Wif1* expression (Red) associated with cell apoptosis (Green) in wild-type embryo (a). Ectopic *Wif1* expression domain (Red) in the cloaca membrane and at the tip of the urs colocalized with apoptotic cells (Green) in E11.5 *Shh^{creERT2/+}* mice (b). The cm was still intact at E13.5 in control embryos (c), whereas the cm was completely degraded at E13.5 resulting in perineal urethra in *Shh^{creERT2/+}* embryos (d). Asterisk indicates the absence of cm. Apoptotic cells (Green) in E11.5 wild-type control embryos (e), in mutant embryos with endodermal deletion of β -catenin (f) or with endodermal induction of constitutive active β -catenin (g) were localized by TUNEL. Scale bar: 50 μ m

observed in *Wif1^{lacZ/lacZ}* mutants. However, around 45% of *Wif1^{lacZ/lacZ}* mice develop normally, indicating that other Wnt inhibitors may be induced to compensate for the lack of *Wif1* function in these normally developed *Wif1^{lacZ/lacZ}* embryos as suggested elsewhere.²²

During GT development, β -catenin expression in the endoderm was suggested as essential for the protrusion and proper morphogenesis.^{15,16} The elongation defect of the urs in β -catenin *LOF* mutants could be attributed to the decreased cell proliferation in the urs mesenchyme (co-submitted MS: Miyagawa *et al.*). Thus, the cloaca septation defects in ETU-treated rats and in *Wif1*-treated urorectum could be mainly attributed to the reduced proliferation of the urs mesenchyme.

Our analysis highlights that *Wif1* controls canonical Wnt signaling during septation; however, the possibility that *Wif1* regulates noncanonical signaling during urorectal development cannot be totally excluded. Indeed, mutation of *Ror2*, a key component in the noncanonical Wnt signaling, caused defects similar as *Wnt5a* knockout embryos,³² suggesting a contribution of noncanonical Wnt signaling in urorectal development.

Endodermal patterning by *Shh* and *Wif1*. Endoderm-derived *Shh* promotes the mesenchyme proliferation essential for GT outgrowth and urs elongation, and proliferation defect of the mesenchyme due to defective *Shh* signaling contributes to urorectal defects in mice.^{13,33} This study

revealed that the endoderm at the apical urs expressed high level of *Wif1* and low level of *Shh*, whereas the endoderm of the basal urs expressed only *Shh* and not *Wif1*. Such distinct endodermal expression patterns of *Shh* and *Wif1* suggest a basal-apical (B-A) patterning of the urs endoderm. Ectopic and precocious expression of *Wif1* in *Shh^{-/-}* E11.5 embryos revealed that *Shh* negatively regulated *Wif1* expression in the endoderm and suggested that B-A patterning defect of the urs endoderm also contributed to the abnormal septation in *Shh^{-/-}* mice. *Shh* has been previously shown to repress the expression of *Bmp4* at the dUE.¹⁵ The promoter of the *Wif1* gene has a Smad binding site and phospho-Smad1 (downstream mediator of *Bmp* signaling) induced *Wif1* expression in lung epithelial cells.²³ Dorsomorphin selectively inhibits the BMP type I receptors and thus blocks BMP-mediated Smad1/5/8 phosphorylation.^{34,35} Dorsomorphin caused a retardation of urs descent and septation defect in mouse urorectum, associated with a reduction of phosphorylation of Smad1 of the urorectal endoderm (Supplementary Figure S4). However, *Wif1* expression of the endoderm was unaffected by dorsomorphin, which indicated that *Shh* regulation of *Wif1* expression in the urorectal endoderm was not through *Bmp*.

Endoderm-derived *Shh* modulates Wnt signaling activity by regulating *Wif1* expression, and this endoderm *Shh*-*Wif1*-Wnt- β -catenin signaling axis may facilitate the descent of the urs for cloaca septation (Figures 8a–f). The urs mesenchyme

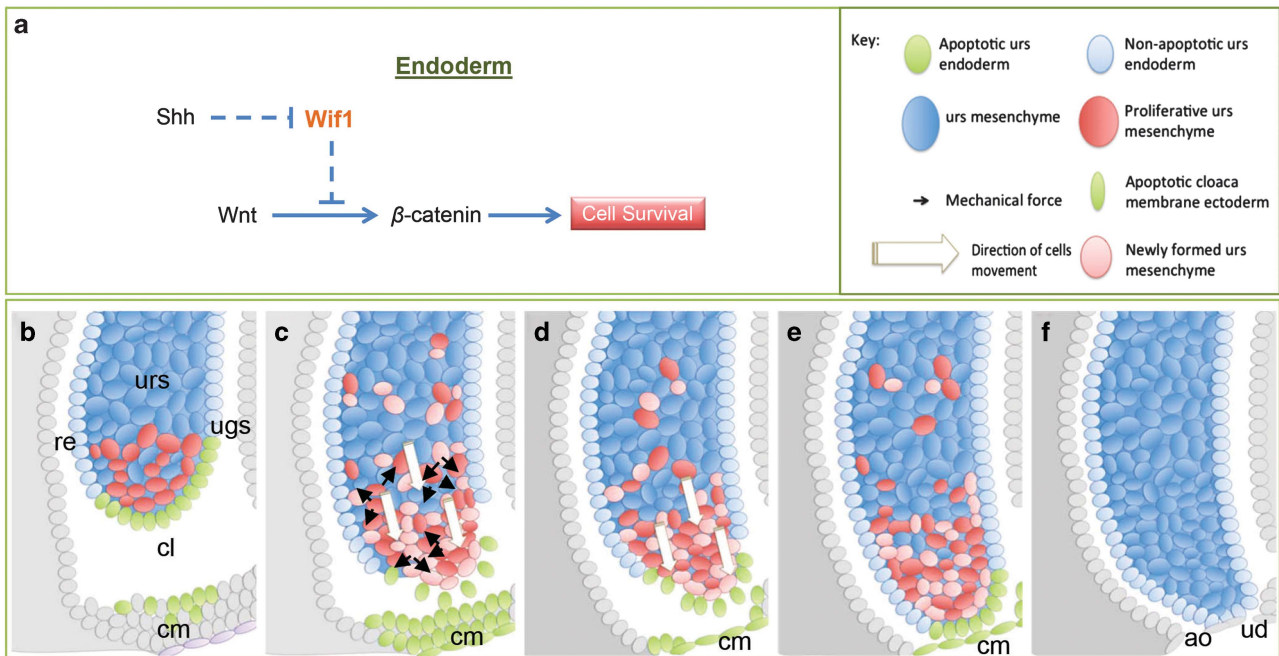


Figure 8 A model of signaling crosstalk regulating Wif1 and urs development. Evidence indicated that Wif1 is negatively regulated by Shh in the urs endoderm. The expression of Wif1 modulates the activity of Wnt- β -catenin signaling to control cell survival of the apical urs endoderm and cloaca membrane endoderm (a). A hypothetical mechanistic model to indicate how Wif1 facilitates the urs descent and cm degradation during cloaca septation (b-f)

cells proliferate producing new cells, and the increasing number of mesenchyme cells exerts outward mechanical force within the constrained urs endoderm. The Wif1-expressing apical urs endoderm undergoes apoptosis, which leaves a weakened endoderm boundary for the mesenchyme cells to relieve such mechanical force constraint, facilitating the 'directional elongation' of the urs toward the cm. Wif1 expression in the proximal cm induces cell death and cm regression to one-cell-thick epithelium. The cm is eventually peeled off forming the anal opening and the apical urs is exposed to the exterior forming the perineum, and ud is formed between the urs and the remaining cm.

In summary, both deletion of Wif1 (*Wif1*^{-/-} mutants) or ectopic induction of Wif1 (*Shh*^{-/-} mutants and ETU-treated rats) in the urs endoderm causes ARMs, but the differences of phenotypes are likely attributed to different pathogenic causes, which are in line with the complex pathogenic nature of ARMs. The identification of a duplication of another Wnt inhibitor gene *DKK4* in patients with ARMs and that excess *DKK4* caused ARM phenotype in culture urorectum³⁶ further revealed the significance of the modulation of Wnt signaling by Wnt inhibitors for urorectal development. A synthetic chemical Di-n-butyl phthalate (DBP) is extensively used in industrial products and is also a common environment pollutant in many countries. DBP could be found in urine of women of childbearing age³⁷ as well in blood, breast milk and urine of women undergoing parturition.³⁸ *In utero* exposure to DBP caused ARM phenotype in rats³⁹⁻⁴¹ and patterning defects in zebrafish,⁴² with downregulation of Shh and Wnt signaling pathways. As Wif1 is dysregulated in *Shh*^{-/-} embryo (current study), it is not unexpected that Wif1 expression is also affected by DBP in rat embryos with ARMs. Taken together, our results indicate that endoderm

Shh-Wif1-Wnt- β -catenin signaling must be precisely regulated and its dysregulation contributes to ARMs.

Materials and Methods

Animals. The mutant mice *Shh*^{creERT2},⁴³ *Wif1*^{lacZ/lacZ},¹⁸ *Topgal*^{lacZ},⁴⁴ *β -cat*^{lox45} and *β -cat*^{lox(ex3)46} were previously described. C57BL/6N mouse strain was used to maintain the genetic background and littermates were used as the control. Mice were kept under 12-h lights on/12-h dark cycle. For mating, male and female mice were housed together and the appearance of vaginal plugs in the morning was treated as embryonic day 0.5 (E 0.5). The tamoxifen (TM)-inducible Cre recombinase system removes the floxed sequence from the targeted allele.⁴⁷ TM (Sigma, St. Louis, MO, USA) was dissolved in sesame oil at 10 mg/ml. Four milligrams and 2 mg of TM per 40 g body weight were fed to *Shh*^{creER}; *β -catenin*^{lox} and *Shh*^{creER}; *β -catenin*^{lox(ex3)} pregnant female, respectively. Under these conditions, no overt teratological effect was detected in these embryos.

Urorectum culture. Urorectums of ICR and *Topgal*^{lacZ/+} mouse embryos at E12 were dissected and cultured as described previously.³⁶ Urorectums were cultured with BGJb medium with or without the addition of exogenous Wif1 protein (2.5 μ g/ml; R&D Systems, Minneapolis, MN, USA) or Dorsomorphin (5 mM; Millipore, Burlington, MA, USA) and were incubated at 37 °C, 5% CO₂.

Histology. Mouse embryos were fixed overnight in 4% paraformaldehyde (PFA; w/v) in PBS, dehydrated through gradient ethanol, embedded in paraffin and 6 μ m serial sections were prepared. Hematoxylin and eosin staining was processed according to standard protocol.

Immunohistochemical and Immunofluorescence staining.

Embryos were fixed in 4% paraformaldehyde overnight and embedded in paraffin wax. Midsagittal sections (6 μ m) or coronal sections (8 μ m) were deparaffinized in xylene and hydrated in graded ethanol to water. Antigens were retrieved by incubating with 10 mM citrate buffer. Peroxidase was inactivated in 1.5% hydrogen peroxide/methanol. Sections were blocked with 1% BSA/PBS. Sections were then incubated with Goat anti-Wif1 (1:100; Santa Cruz Biotech Inc., Santa Cruz, CA, USA) and Rabbit anti- β -catenin (1:100; Cell signaling Tech. Inc., Beverly, MA, USA) at 4 °C overnight. For IHC analysis, sections were incubated with rabbit anti-goat (1:200; Dako, Glostrup, Denmark) and Mouse anti-rabbit (Dako) after

stringency wash in PBS. Color was developed and then sections were counterstained with hematoxylin. For immunofluorescence, sections were incubated with AlexaFluor 594 Donkey anti-goat (1:200, Invitrogen, Carlsbad, CA, USA). Sections were mounted in mounting solution containing DAPI (Vectalabs, Burlingame, CA, USA).

In situ hybridization. For section ISH, embryos were fixed in 4% paraformaldehyde, embedded in paraffin wax and sectioned in 6 μ m. ISH was performed as previously described.¹⁶

X-gal staining. Embryos were fixed for 15 min in 4% paraformaldehyde and incubated in X-gal staining solution (40 mM potassium ferrocyanide, 40 mM potassium ferricyanide, 4 mM MgCl₂, 1 mg/ml X-gal in DMSF) until optimal color developed. Samples were rinsed in PBS and post-fixed in 4% paraformaldehyde and imaged under a dissection microscope. Embryos were then cryosectioned and imaged on a Nikon Eclipse E600 microscope.

TUNEL analysis. Hydrated sections were treated in Proteinase K (20 μ g/ml) at 37 °C for 10 min. Reaction was stopped by 10 mM glycine solution. The sections were incubated with 50 μ l mixture of TUNEL solution (Roche Diagnostic, Basel, Switzerland) at 37 °C for 1 h. Sections were mounted in mounting solution containing DAPI (Vectalabs).

3D-reconstruction. Serial coronal sections of the caudal region of mouse embryos were stained. The background color and color were edited by Adobe Photo element 7.0 Windows PC version. Edited photos were imported into 3D-doctor software (ABLE Software Corporation, Lexington, MA, USA) and aligned in position. 3-Dimension images of the urorectum were rendered by stacking up the serial orientated photos. All the parameters inputted followed the guidelines as described in the manufacturer manual.

ETU (ethylenethiourea) induction of ARMs in rat. ETU was dissolved in distilled water (1% wt/vol). Pregnant rats were fed with 1% ETU (125 mg/kg) at gestational day 11.5. Control rats were given same volume of water. E14.5 embryos were collected for histology or immunostaining for Wif1. The urorectal region of E14.5 embryos (both from control and ETU group) were dissected for mRNA preparation for GeneChip analysis or real-time RT-PCR verification.

Conflict of Interest

The authors declare no conflict of interest.

Acknowledgements. We thank Igor B. Dawid (Eunice Kennedy Shriver National Institute of Child Health and Human Development, National Institute of Health, Bethesda, MD 20892, USA) for the *Wif1^{lacZ/lacZ}* mice, and CC Hui for the *Shh^{-/-}* mutant embryos at the initial stage of the study. This work was partly supported by the HKU Seed Funding for Basic Research (201111159048) to VCH Lui.

- Levitt MA, Pena A. Anorectal malformations. *Orphanet J Rare Dis* 2007; **2**: 33.
- Mundt E, Bates MD. Genetics of Hirschsprung disease and anorectal malformations. *Semin Pediatr Surg* 2010; **19**: 107–117.
- Belloni E, Martucciello G, Verderio D, Ponti E, Seri M, Jasonni V et al. Involvement of the HLXB9 homeobox gene in Currarino syndrome. *Am J Hum Genet* 2000; **66**: 312–319.
- Kohlhase J, Taschner PE, Burfeind P, Pasche B, Newman B, Blanck C et al. Molecular analysis of SALL1 mutations in Townes-Brocks syndrome. *Am J Hum Genet* 1999; **64**: 435–445.
- Kohlhase J, Wischermann A, Reichenbach H, Froster U, Engel W. Mutations in the SALL1 putative transcription factor gene cause Townes-Brocks syndrome. *Nat Genet* 1998; **18**: 81–83.
- Martinez-Frias ML, Bermejo E, Frias JL. The VACTERL association: lessons from the Sonic hedgehog pathway. *Clin Genet* 2001; **60**: 397–398.
- Mo R, Kim JH, Zhang J, Chiang C, Hui CC, Kim PC. Anorectal malformations caused by defects in sonic hedgehog signaling. *Am J Pathol* 2001; **159**: 765–774.
- Seifert AW, Yamaguchi T, Cohn MJ. Functional and phylogenetic analysis shows that Fgf8 is a marker of genital induction in mammals but is not required for external genital development. *Development* 2009; **136**: 2643–2651.
- Wu X, Ferrara C, Shapiro E, Grishina I. Bmp7 expression and null phenotype in the urogenital system suggest a role in re-organization of the urethral epithelium. *Gene Expression Patterns* 2009; **9**: 224–230.
- Yamaguchi TP, Bradley A, McMahon AP, Jones S. A Wnt5a pathway underlies outgrowth of multiple structures in the vertebrate embryo. *Development* 1999; **126**: 1211–1223.
- Lin C, Yin Y, Veith GM, Fisher AV, Long F, Ma L. Temporal and spatial dissection of Shh signaling in genital tubercle development. *Development* 2009; **136**: 3959–3967.
- Xu K, Wu X, Shapiro E, Huang H, Zhang L, Hickling D et al. Bmp7 functions via a polarity mechanism to promote cloacal septation. *PLoS One* 2012; **7**: e29372.
- Seifert AW, Bouldin CM, Choi K-S, Harfe BD, Cohn MJ. Multiphasic and tissue-specific roles of sonic hedgehog in cloacal septation and external genitalia development. *Development* 2009; **136**: 3949–3957.
- Lin C, Yin Y, Bell SM, Veith GM, Chen H, Huh SH et al. Delineating a conserved genetic cassette promoting outgrowth of body appendages. *PLoS Genet* 2013; **9**: e1003231.
- Lin C, Yin Y, Long F, Ma L. Tissue-specific requirements of beta-catenin in external genitalia development. *Development* 2008; **135**: 2815–2825.
- Miyagawa S, Moon A, Haraguchi R, Inoue C, Harada M, Nakahara C et al. Dosage-dependent hedgehog signals integrated with Wnt/beta-catenin signaling regulate external genitalia formation as an appendicular program. *Development* 2009; **136**: 3969–3978.
- Kawano Y, Kypta R. Secreted antagonists of the Wnt signalling pathway. *J Cell Sci* 2003; **116**: 2627–2634.
- Kansara M, Tsang M, Kodjabachian L, Sims NA, Trivett M, Ehrich M et al. Wnt inhibitory factor 1 is epigenetically silenced in human osteosarcoma, and targeted disruption accelerates osteosarcomagenesis in mice. *J Clin Invest* 2009; **119**: 837–851.
- Ramachandran I, Thavathiru E, Ramalingam S, Natarajan G, Mills WK et al. Wnt inhibitory factor 1 induces apoptosis and inhibits cervical cancer growth, invasion and angiogenesis in vivo. *Oncogene* 2012; **31**: 2725–2737.
- Hsieh JC, Kodjabachian L, Rebbert ML, Rattner A, Smallwood PM, Samos CH et al. A new secreted protein that binds to Wnt proteins and inhibits their activities. *Nature* 1999; **398**: 431–436.
- Surmann-Schmitt C, Widmann N, Dietz U, Saeger B, Eitzinger N, Nakamura Y et al. Wif-1 is expressed at cartilage-mesenchyme interfaces and impedes Wnt3a-mediated inhibition of chondrogenesis. *J Cell Sci* 2009; **122**: 3627–3637.
- Keil KP, Mehta V, Branam AM, Abler LL, Buresh-Stiemke RA, Joshi PS et al. Wnt inhibitory factor 1 (Wif1) is regulated by androgens and enhances androgen-dependent prostate development. *Endocrinology* 2012; **153**: 6091–6103.
- Xu B, Chen C, Chen H, Sheng SG, Bringas P, Xu M et al. Smad1 and its target gene Wif1 coordinate BMP and Wnt signaling activities to regulate fetal lung development. *Development* 2011; **138**: 925–935.
- Seifert AW, Harfe BD, Cohn MJ. Cell lineage analysis demonstrates an endodermal origin of the distal urethra and perineum. *Dev Biol* 2008; **318**: 143–152.
- Chen JK, Taipale J, Cooper MK, Beachy PS. Inhibition of Hedgehog signaling by direct binding of cyclopamine to Smoothened. *Genes Dev* 2002; **16**: 2743–2748.
- Haraguchi R, Mo R, Hui C, Motoyama J, Makino S, Shiroshi T et al. Unique functions of Sonic hedgehog signaling during external genitalia development. *Development* 2001; **128**: 4241–4250.
- Nakajima T, Iguchi T, Sato T. Hedgehog signaling plays roles in epithelial cell proliferation in neonatal mouse uterus and vagina. *Cell Tissue Res* 2012; **348**: 239–247.
- Bodine PVN. Wnt signaling control of bone cell apoptosis. *Cell Res* 2008; **18**: 248–253.
- Ewan KBR, Dale TC. The potential for targeting oncogenic WNT/beta-catenin signaling in therapy. *Curr Drug Targets* 2008; **9**: 532–547.
- Han J, Sridevi P, Ramirez M, Ludwig KL, Wang JYJ. β -Catenin-dependent lysosomal targeting of internalized tumor necrosis factor- α suppresses caspase-8 activation in apoptosis-resistant colon cancer cells. *Mol Biol Cell* 2013; **24**: 465–473.
- Grotewold L, R  ther U. The Wnt antagonist Dickkopf-1 is regulated by Bmp signaling and c-Jun and modulates programmed cell death. *EMBO J* 2002; **21**: 966–975.
- Schwabe GC, Trepczik B, S  ring K, Brieske N, Tucker AS, Sharpe P et al. Ror2 knockout mouse as a model for the developmental pathology of autosomal recessive Robinow syndrome. *Dev Dynamics* 2004; **229**: 400–410.
- Seifert AW, Zheng Z, Ormerod BK, Cohn MJ. Sonic hedgehog controls growth of external genitalia by regulating cell cycle kinetics. *Nat Commun* 2010; **1**: 23.
- Yu PB, Deng DY, Lai CS, Hong CC, Cuny GD, Bouxsein ML et al. BMP type I receptor inhibition reduces heterotopic [corrected] ossification. *Nat Med* 2008; **14**: 1363–1369.
- Yu PB, Hong CC, Sachidanandan C, Babitt JL, Deng DY, Hoyng SA et al. Dorsomorphin inhibits BMP signals required for embryogenesis and iron metabolism. *Nat Chem Biol* 2008; **4**: 33–41.
- Wong EHM, Cui L, Ng C-L, Tang CSM, Liu XL, So MT et al. Genome-wide copy number variation study in anorectal malformations. *Hum Mol Genet* 2013; **22**: 621–631.
- Blount BC, Silva MJ, Caudill SP, Needham LL, Pirkie JL, Sampson EJ et al. Levels of seven urinary phthalate metabolites in a human reference population. *Environ Health Perspect* 2000; **108**: 979–982.
- Chen JA, Liu H, Qiu Z, Shu W. Analysis of di-n-butyl phthalate and other organic pollutants in Chongqing women undergoing parturition. *Environ Pollut* 2008; **156**: 849–853.

39. Jiang JT, Sun WL, Jing YF, Liu SB, Ma Z, Hong Y *et al*. Prenatal exposure to di-n-butyl phthalate induces anorectal malformations in male rat offspring. *Toxicology* 2011; **290**: 322–326.
40. Kim TS, Jung KK, Kim SS, Kang IH, Baek JH, Nam HS *et al*. Effects of in utero exposure to Di(n-Butyl) phthalate on development of male reproductive tracts in Sprague-Dawley rats. *J Toxicol Environ Health A* 2010; **73**: 1544–1559.
41. Zhu YJ, Jiang JT, Ma L, Zhang J, Hong Y, Liao K *et al*. Molecular and toxicologic research in newborn hypospadiac male rats following in utero exposure to di-n-butyl phthalate (DBP). *Toxicology* 2009; **260**: 120–125.
42. Fairbairn EA, Bonthius J, Cherr GN. Polycyclic aromatic hydrocarbons and dibutyl phthalate disrupt dorsal-ventral axis determination *via* the Wnt/beta-catenin signaling pathway in zebrafish embryos. *Aquat Toxicol* 2012; **124–125**: 188–196.
43. Harfe BD, Scherz PJ, Nissim S, Tian H, McMahon AP, Tabin CJ. Evidence for an expansion-based temporal Shh gradient in specifying vertebrate digit identities. *Cell* 2004; **118**: 517–528.
44. DasGupta R, Fuchs E. Multiple roles for activated LEF/TCF transcription complexes during hair follicle development and differentiation. *Development* 1999; **126**: 4557–4568.
45. Huelsken J, Vogel R, Erdmann B, Cotsarelis G, Birchmeier W. beta-Catenin controls hair follicle morphogenesis and stem cell differentiation in the skin. *Cell* 2001; **105**: 533–545.
46. Harada N, Tamai Y, Ishikawa T, Sauer B, Takaku K, Oshima M *et al*. Intestinal polyposis in mice with a dominant stable mutation of the beta-catenin gene. *EMBO J* 1999; **18**: 5931–5942.
47. Feil R, Wagner J, Metzger D, Chambon P. Regulation of Cre recombinase activity by mutated estrogen receptor ligand-binding domains. *Biochem Biophys Res Commun* 1997; **237**: 752–757.



This work is licensed under a Creative Commons Attribution-NonCommercial-NoDerivs 3.0 Unported License. To view a copy of this license, visit <http://creativecommons.org/licenses/by-nc-nd/3.0/>

Supplementary Information accompanies this paper on Cell Death and Differentiation website (<http://www.nature.com/cdd>)