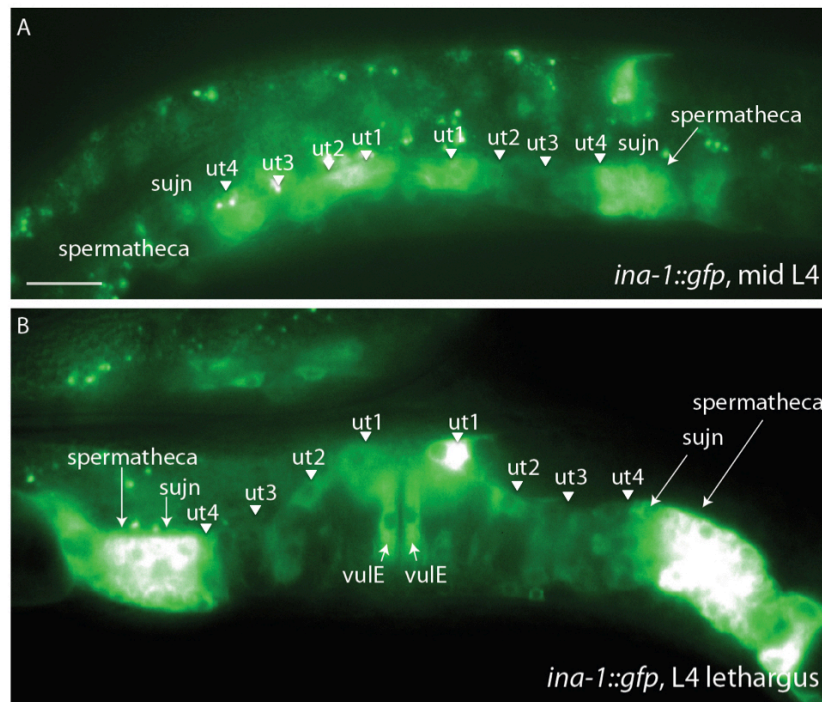


ina-1 expression in the somatic gonad during late larval development

Srimoyee Ghosh¹, Takao Inoue³, Paul W. Sternberg^{1,2}

¹Division of Biology and Biological Engineering, California Institute of Technology, Pasadena, CA. ²Howard Hughes Medical Institute.

³Department of Biochemistry, Yong Loo Lin School of Medicine, National University of Singapore, 117597, Singapore.



Description:

ina-1 is expressed throughout uterine toroids. (A) At mid L4, expression is seen in uterine toroid 1 and 4 (ut1, ut4) and in the anterior uterine toroids 2 and 3 (ut2, ut3). In addition, *ina-1::GFP* is detected in the spermathecal-uterine junction and spermatheca. (B) At the L4 lethargus stage, bright expression is observed in uterine toroids 1 and 4, the spermathecal-uterine junction, and spermatheca. Dimmer expression is present in uterine toroid 2 and posterior toroid 3. Fluorescence is also detected in vulE. Anterior to the left, dorsal top. Scale bar 100 μm.

Reagents:

gmls5: [*INA-1::GFP*; rol-6(su1006)]

Funding: National Institutes of Health USPHS training grant GM07616.

Reviewed by Bhagwati Gupta

Received 07/2015, Accepted 08/2015. Available starting WormBase release WS247, Published Online 03/01/2016.

Copyright: © 2016. This is an open-access article distributed under the terms of the Creative Commons Attribution License, which permits unrestricted use, distribution, and reproduction in any medium, provided the original author and source are credited.

Citation: Ghosh, S; Inoue, T; Sternberg, PW. (2015): *ina-1* expression in the somatic gonad during late larval development.

Micropublication:biology. Dataset. DOI: <http://dx.doi.org/10.17912/W2159J>.