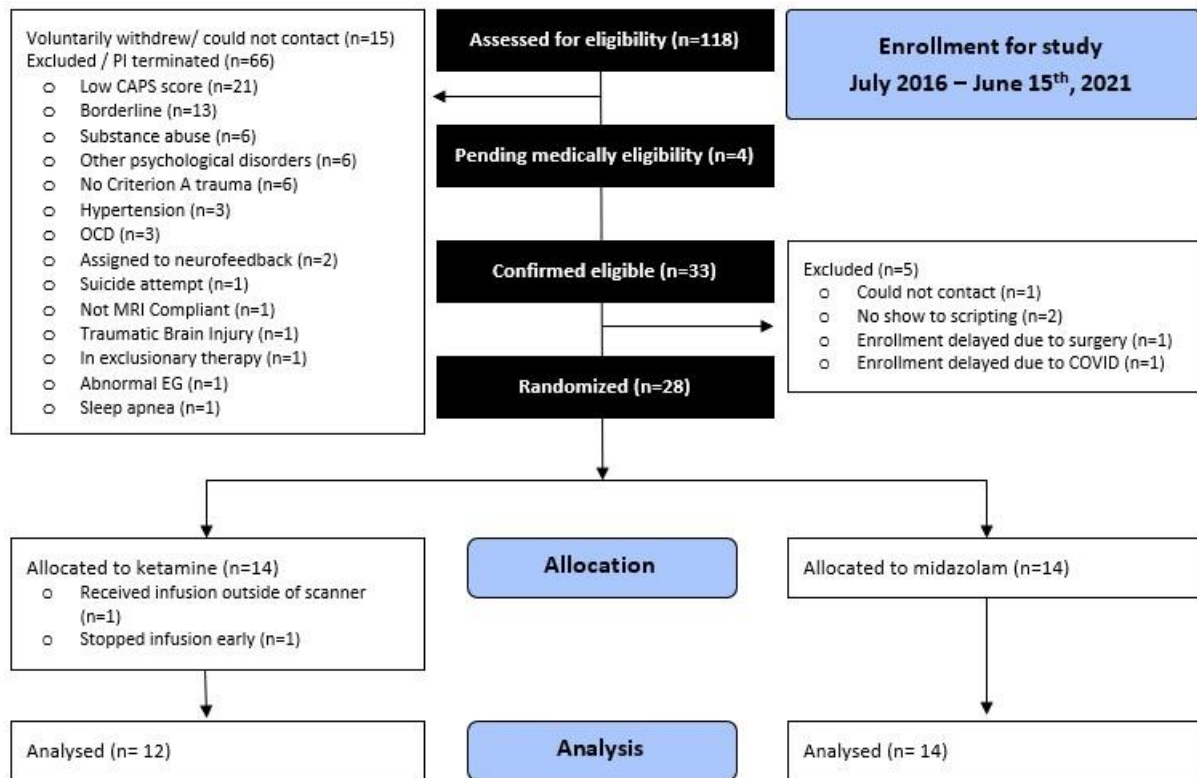


*Psychopharmacology*

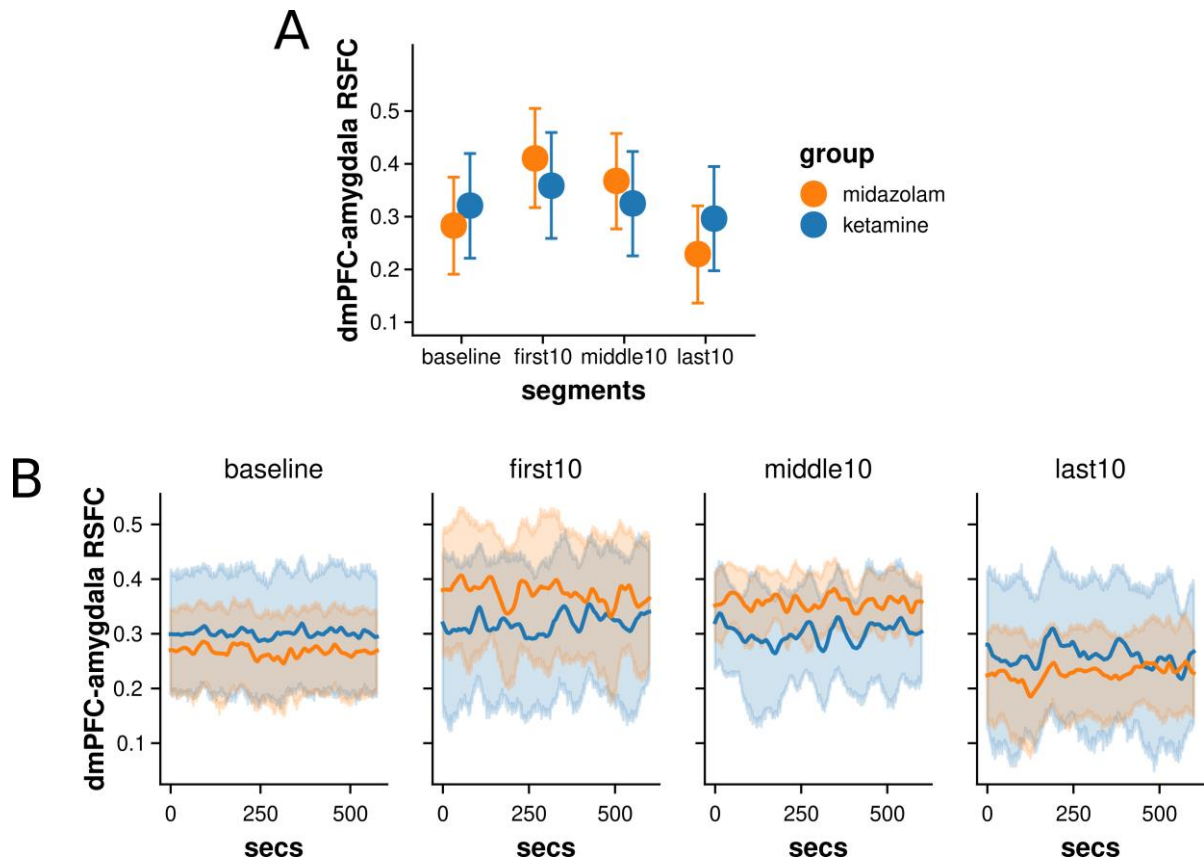
**Effects of a dissociative drug on fronto-limbic resting-state functional connectivity in individuals with posttraumatic stress disorder: a randomized controlled pilot study**

Supplemental material

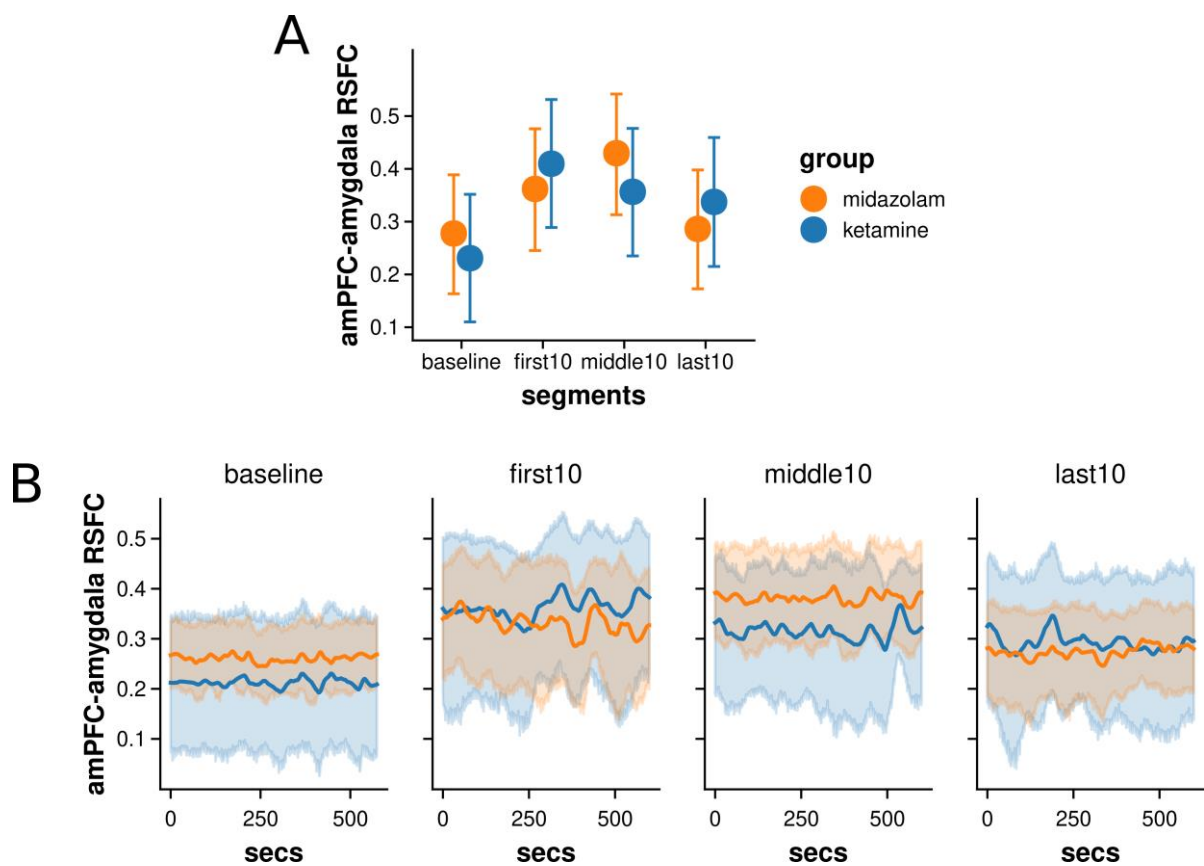
Sarah K. Danboeck, Or Duek, Ziv Ben-Zion, Nachshon Korem, Shelley L. Amen, Ben Kelmendi, Frank H. Wilhelm, Ifat Levy, & Ilan Harpaz-Rotem



*Figure S1.* CONSORT flow diagram. The current paper examines data of the infusion session of a larger clinical trial. For a description of the full clinical trial see Duek et al (2023).



*Figure S2.* (A) Fitted values of a Bayesian multilevel regression model predicting (static) dmPFC-amygdala RSFC by group (ketamine vs. midazolam) and segment (baseline; first, middle, and last 10-minutes of drug infusion). Vertical lines represent 89% CIs. (B) Timepoint-by-timepoint (dynamic) dmPFC-amygdala RSFC.



*Figure S3.* (A) Fitted values of a Bayesian multilevel regression model predicting (static) amPFC-amygdala RSFC by group (ketamine vs. midazolam) and segment (baseline; first, middle, and last 10-minutes of drug infusion). Vertical lines represent 89% CIs. (B) Timepoint-by-timepoint (dynamic) amPFC-amygdala RSFC.