



Since January 2020 Elsevier has created a COVID-19 resource centre with free information in English and Mandarin on the novel coronavirus COVID-19. The COVID-19 resource centre is hosted on Elsevier Connect, the company's public news and information website.

Elsevier hereby grants permission to make all its COVID-19-related research that is available on the COVID-19 resource centre - including this research content - immediately available in PubMed Central and other publicly funded repositories, such as the WHO COVID database with rights for unrestricted research re-use and analyses in any form or by any means with acknowledgement of the original source. These permissions are granted for free by Elsevier for as long as the COVID-19 resource centre remains active.



Special article

COVID-19: Key Concepts for the Surgeon[☆]

Inés Rubio-Pérez,^{a,*} Josep M. Badía,^b Marta Mora-Rillo,^c Alejandro Martín Quirós,^d Julio García Rodríguez,^e Jose M. Balibrea,^f with the collaboration of the Surgery-AEC-COVID-19 group[◇]

^a Servicio de Cirugía General y Aparato Digestivo, Hospital Universitario La Paz, Madrid, Spain

^b Servicio de Cirugía General y Aparato Digestivo, Hospital General de Granollers, Universitat Internacional de Catalunya, Barcelona, Spain

^c Servicio de Medicina Interna, Unidad de Enfermedades Infecciosas y Microbiología Clínica, Unidad de Aislamiento de Alto Nivel, Hospital Universitario La Paz, IdiPAZ, Madrid, Spain

^d Servicio de Urgencias y Unidad de Aislamiento de Alto Nivel, Hospital Universitario La Paz, Madrid, Spain

^e Servicio de Microbiología, Hospital Universitario La Paz, Madrid, Spain

^f Servicio de Cirugía General y Aparato Digestivo, Hospital Clínic de Barcelona, Universitat de Barcelona, Barcelona, Spain

ARTICLE INFO

Article history:

Received 8 April 2020

Accepted 9 April 2020

Available online 28 May 2020

Keywords:

Coronavirus disease 19

Surgery

Coronavirus 2

Preventative measures

Surgical infection

A B S T R A C T

In view of the current pandemic by SARS-CoV-2 it deems essential to understand the key concepts about the infection: its epidemiological origin, presentation, clinical course, diagnosis and treatment (still experimental in many cases). The knowledge about the virus is still limited, but as the pandemic progresses and the physiopathology of the disease is understood, new evidence is being massively published. Surgical specialists are facing an unprecedented situation: they must collaborate in the ER or medical wards attending these patients, while still needing to make decisions about surgical patients with probable COVID-19. The present narrative review aims to summarize the most relevant aspects and synthesize concepts on COVID-19 for surgeons.

© 2020 AEC. Published by Elsevier España, S.L.U. All rights reserved.

COVID-19: conceptos clave para el cirujano

R E S U M E N

Ante la pandemia por SARS-CoV-2 resulta fundamental conocer los aspectos claves de la infección: su origen epidemiológico, presentación, curso clínico, diagnóstico y los tratamientos empleados (aún experimentales en muchos casos). El conocimiento sobre el virus es limitado, pero a medida que progresa la pandemia y se conoce más su fisiopatología, se está publicando nueva evidencia de forma masiva. Los especialistas quirúrgicos se enfrentan a una situación sin precedentes: deben colaborar en plantas

Palabras clave:

Enfermedad por coronavirus 19

Cirugía

Coronavirus 2

Medidas preventivas

Infección quirúrgica

[☆] Please cite this article as: Rubio-Pérez I, Badía JM, Mora-Rillo M, Martín Quirós A, García Rodríguez J, Balibrea JM. COVID-19: conceptos clave para el cirujano. Cir Esp. 2020;98:310-319.

* Corresponding author.

E-mail address: i.rubio@aecirujanos.es (I. Rubio-Pérez).

◇ The names of the components of the Surgery-AEC-COVID-19 group are listed in [Annex 1](#).

médicas o urgencias atendiendo a estos pacientes y además tomar decisiones sobre pacientes quirúrgicos con posible COVID-19. Esta revisión narrativa pretende resumir los aspectos más relevantes y sintetizar los conceptos básicos sobre COVID-19 para los cirujanos.

© 2020 AEC. Publicado por Elsevier España, S.L.U. Todos los derechos reservados.

Introduction

The current pandemic of severe acute respiratory syndrome coronavirus 2 (SARS-CoV-2) is an unprecedented situation for healthcare systems. The high incidence of cases has saturated these systems, leading to the reorganization of hospitals and the availability of all resources for the treatment of patients with COVID-19. This has had a significant impact in the field of surgery, as many elective surgical procedures have been suspended, operating rooms closed for the use of the ventilators in intensive care units, and surgical staff redistributed to other medical services. Both the Spanish Ministry of Health and numerous scientific societies have published guidelines and recommendations for medical professionals. The Surgical Infection Division of the Spanish Association of Surgeons (*Asociación Española de Cirujanos*, or AEC) and the specific Surgery-AEC-COVID-19 workgroup have reviewed the scientific evidence and available guidelines, synthesizing key concepts about COVID-19 in order to facilitate the transfer of this knowledge to surgeons.

Methods

A review of the literature has been conducted using PubMed and platforms with specific COVID-19 resources: LitCovid,¹ Cochrane Library,² Lancet Resource Center,³ SpringerNature,⁴ BioMed central⁵ and JAMA network.⁶ Likewise, for other specific aspects, we have consulted updated information and documents from the Spanish Ministry of Health, the World Health Organization (WHO), Centers for Disease Control (CDC), as well as the recommendations of surgical societies including: AEC, American College of Surgeons, Society of American Gastrointestinal and Endoscopic Surgeons, European Cancer Organization and the Association of Surgeons of Great Britain and Ireland.

The co-authors conducted the bibliographic search, reviewed the selected articles, adapted the content for synthesis. The most relevant topics were grouped in an orderly manner to facilitate accessibility, consultation of this document. The authors have provided a narrative review of the literature available for certain key aspects of COVID-19, epidemiology, clinical presentation, diagnosis, treatment, which are of special interest to the readers of the journal. Specific concepts related to surgery have also been included, based on available evidence.

Results

Epidemiology and Timeline

The new coronavirus responsible for severe acute respiratory syndrome (SARS-CoV-2) was first detected in December 2019 in the city of Wuhan (Hubei Province, China). Several cases of atypical pneumonia of unclear origin were detected. As the first infected patients had been to the Huanan market (Wuhan), this site was the suspected ground zero of the epidemic and was closed on January 1, 2020.⁷ The disease is considered a zoonosis, although it still has not been determined in which animal the disease originated. Based on the genetic sequencing of the virus, either bats or the pangolin would be the most probable animal of origin.⁸ The virus was sequenced in early January 2020, which identified it as a new type of coronavirus.⁹

On January 12, 2020, China openly shared the gene sequencing of the new coronavirus on the gisaid.org platform. On January 13, the first case outside China was detected in Thailand, which was an individual who had traveled to Wuhan. In the following days, cases were detected in Japan, Korea and other Asian countries. On January 20, the USA reported the first positive case, a traveler who arrived in Washington state that had also come from Wuhan. The first case in Europe was reported by the French Ministry of Health on January 24th.

On January 30, 2020, the WHO declared a Public Health Emergency of International Concern (PHEIC), and the number of cases continued to rise in several countries, including Iran, Italy and Spain. On March 11, 2020, the WHO declared COVID-19 had progressed to pandemic status.¹⁰

Situation in Spain

Table 1 shows the chronology of the most relevant events in Spain in terms of the start and evolution of the epidemic.

By April 17, 2020, a total of 188 068 cases had been registered in Spain, with 19 478 deaths and 72 963 cured patients (currently, these numbers are still rising). However, the estimates of undiagnosed cases are much higher. The Community of Madrid has been one of the most affected, with the highest number of confirmed cases (> 51 993 on April 17, 2020).¹¹

Characteristics of the Virus

Coronaviruses are a broad family of viruses first described in the 1960s. They are spherical, encapsulated viruses that contain

Table 1 – Timeline of the Most Relevant Events in Spain Regarding the Onset and Evolution of the Epidemic.

Date	Incidence
31/01/2020	First imported cases – Canary Islands (La Gomera)
24/01/2020	First cases on the peninsula
25/01/2020	First case in Madrid (Hospital La Paz)
	First press conference by the Director of the Coordination and Health Emergency center of the Spanish Ministry of Health
26/02/2020	The Ministry of Health recommends restricting travel, especially to affected areas
03/03/2020	Sporting events played behind closed doors (no audience)
09/03/2020	Uncontrolled community spread is confirmed
11/03/2020	Schools, high schools, pre-schools, colleges and universities are closed
14/03/2020	Royal Decree 463/2020 declaring State of Alarm
27/03/2020	Royal Decree 476/2020 prolonging State of Alarm

single-stranded RNA surrounded by a protein coat. Protein S 'spikes' cause the characteristic structures giving it its crown-like appearance, and they are what determine the tropism of the virus and its fusion with host cells. There are several known coronaviruses circulating in animals and humans. An interspecies 'jump' can sometimes occur, as in the case of SARS in 2002 (which originated in civets) or MERS in 2012 (originating in dromedaries), causing serious novel respiratory diseases in humans. The main difference between these and the current SARS-CoV-2 is the transmissibility between humans that the latter has shown.

On February 11, 2020, the official nomenclature was established for the virus as SARS-CoV-2, and the disease it causes as COVID-19.¹² It is a highly transmissible virus. The main form of transmission is droplets (large particles > 5 µm, moving 1–2 m) that are produced when an infected person sneezes or coughs. Transmission by contact with surfaces or fomites contaminated by these droplets is also relevant, with subsequent entry of the infection by touching the nose, eyes or mouth. Transmission by aerosols (small particles < 5 µm, moving more than 1 m) is also possible and has stirred up controversy. This factor is especially relevant in the healthcare setting. In the operating room, the possibility of aerosolization when performing intubation or any airway-related maneuver is of concern. Aerosolization also seems possible when using electrocoagulation or laparoscopy (if the patient is infected) when performing these techniques on infected tissue, mainly the respiratory tree.¹³

In vitro studies have shown that the virus can survive on multiple types of surfaces (metal, plastic or glass), where it can remain for up to 9 days.¹⁴ Disinfection of surfaces is therefore essential to minimize the contagion risk. Thorough hand washing (with soap and water) is recommended as a preventive measure, using either soap (due to the ability of the soap to disintegrate the viral lipid capsule) or hydroalcoholic gels. Likewise, solutions of 62%-71% alcohol (ethanol), 0.5% hydrogen peroxide and 0.1% sodium hypochlorite are highly virucidal (time of around one minute), which should be used in surface disinfection. Other biocides such as 0.02% chlorhexidine gluconate or 0.05%-2% benzalkonium chloride are less effective.^{15,16}

The WHO has made available formulations to for individual/institutional/local production of alcoholic solutions in case of shortages or distribution problems.¹⁷

Prevention of Transmission and Infection

As the specific mechanism of transmission of the virus is known, it is essential to establish preventive measures. In

the case of transmission by droplets, the basic measures are:¹⁸

- Cover mouth/nose when sneezing, or use a disposable tissue and throw this away immediately.
- Symptomatic patients should cover their nose and mouth with a mask, one without a valve to avoid the dispersion of droplets.
- Wash hands with soap and water or hydroalcoholic solution.
- Maintain interpersonal distance (some studies even recommend 1.8-2 meters).
- Avoid touching your face (eyes, nose and mouth).
- Follow pertinent recommendations made by health authorities (local/national/international).

In the situation of an epidemic, it is essential to adopt a series of public health measures for the population, which will depend on the evolution of the epidemic and the local context:

- Vigilance: rapid detection of cases in order to establish pertinent isolation measures as early as possible during the containment phase.
- Screening at entry points: detection of imported cases and adequate information to persons coming from affected areas.
- Contact studies of confirmed cases to quickly identify infected individuals, and isolation (at home) of positive patients to avoid new contacts for 2 weeks (in the containment phase).
- Social distancing measures: these may include avoiding crowds or large gatherings or public events, and even mandatory quarantine of the population (mitigation phase).
- Healthcare authorities should inform the public about the measures implemented, number of cases and status of the epidemic; health education measures are also necessary.

Symptoms

The clinical presentation is highly variable, and different conditions have been observed, from mild (catarrhal symptoms) to very severe (adult respiratory distress

syndrome). There are asymptomatic patients who pose an epidemiological problem due to their ability to transmit the virus unnoticed. The average incubation period is about 5 days (ranging from 0 to 14 days), and 97.5% of patients develop the disease in the first 12.5 days of incubation.¹⁹

The most frequently described clinical symptoms have been fever, cough (with/without expectoration) and general malaise. Other symptoms have been described with varying frequencies, including dyspnea, headache, asthenia, myalgia, odynophagia, nasal congestion/discharge, anosmia, ageusia, syncope, confusion, neurological symptoms, ophthalmological symptoms (conjunctivitis and dry eye) and cutaneous (rash skin eruptions).²⁰

A percentage of patients report the presence of diarrhea, vomiting and abdominal pain as relevant symptoms. SARS-CoV-2 RNA has been identified in stool samples from infected patients, and the viral receptor ACE2 has been found with high expression in gastrointestinal epithelial cells, indicating that the virus could easily infect and replicate in the gastrointestinal tract. It has also been observed that the virus continues to be eliminated in the feces after the initial symptoms have passed.²¹ However, fecal-oral transmission has not been confirmed at this time.

Preliminary data obtained mainly from studies carried out in the Chinese population seem to indicate that elderly patients with associated comorbidities (HTN, cardiopathy, diabetes, cancer, obesity, etc.) are at increased risk of serious presentations.²² It is estimated that more than 80% of total cases are mild/moderate, but 14% are severe and 5% critical.²³ Patients with the highest mortality in the Chinese retrospective studies were males with a mean age 17 years older than survivors (68 vs. 51 years) who had some type of underlying pathological process (HTN, diabetes, cardiovascular disease or COPD). Furthermore, the presence of various associated comorbidities also increased the risk of poor progress.²⁴ Table 2 shows some serious risk factors and laboratory abnormalities that have been associated with poor clinical outcomes.

It has been observed that cases with poor present sudden worsening (usually in the second week of illness), with the appearance of dyspnea and respiratory failure that usually lead to the need for oxygen therapy and occasionally intubation and ICU care around days 10 to 12.^{25,26} The usual cause of death is uncontrolled sepsis and respiratory failure.

This poor evolution seems to correlate with the development of a 'cytokine storm' on the 7th day, which occurs as a result of the virus's interaction with the patient's immune system.²⁷

Diagnosis

Microbiology

The molecular diagnosis is based on RT-PCR techniques that study specific sequences of the virus genome. When the SARS-CoV-2 genome was openly shared, several groups began working to develop diagnostic RT-PCR tests based on genomic regions. In general, it is recommended to detect a less specific area for screening (the envelope gene or E gene) and another more specific one for confirmation (RNA-dependent RNA polymerase, or RdRP).²⁸ There are different combinations of sequences according to the protocol developed by several laboratories. Despite having high sensitivity and specificity, these tests can present false negatives.²⁹ Generally, these are due to the sample being insufficient or unrepresentative, taken too early or too late in the course of the disease, or degraded during transport or handling. In negative cases where suspicion or symptoms persist, it is recommended to repeat the RT-PCR in a few days.

Although nasopharyngeal or oropharyngeal samples are the easiest to obtain, bronchial samples (for example, bronchoalveolar lavage) are more effective for diagnosis yet more complex to obtain and require a higher level of biosecurity for personnel during extraction. The virus has also been detected in other biological samples (blood, feces, and saliva).³⁰

Serological techniques are able to detect IgM and IgG antibodies. There is evidence that these techniques begin to detect antibodies from day 5 after the onset of symptoms, and they can be useful for population-based seroprevalence studies. There are already commercially available serological tests (immunochromatography) performed with whole blood that may be useful in diagnosis.

Cell culture is used for research. It takes several days, so it is not useful for clinical diagnosis, but it enables us to study the cytopathic effect of the virus on cell lines and to obtain virions. In this instance, biosecurity facilities (minimum BSL III) are necessary.

Table 2 – Lab Work Alterations and Risk Factors for Severe Disease Associated With Poor Clinical Outcomes.

Analytical Determinations (Markers for Severe Disease)	Risk Factors for Developing Severe Disease
Lymphopenia (<1000)	Age > 60 yrs
D-dimer (>1000)	HTN
PCR	Cardiovascular diseases
LDH	Bronchopathy
Ferritin	Diabetes
Creatinine	Obesity
IL-6 ('cytokine storm' marker)	Immunosuppression
Increased transaminases	Cancer
	Pregnancy

Radiology

In the initial stages of the disease, changes may not be observed on plain radiography, or even on CT scan if performed during the first 2 days of symptoms. However, as the condition progresses, the sensitivity of CT increases, especially after the 6th day, when almost all patients with COVID-19 will present some type of alteration.

When the radiological image is abnormal, certain common patterns are seen.³¹ Asymmetrical areas of alveolar or interstitial opacity (patches or diffuse) are identified on simple chest radiograph. The most common pattern is bilateral pneumonia, with subpleural ground glass opacities, poorly defined margins and a slight predilection for the right lower lobe (Fig. 1).

The most characteristic findings on thoracic CT are multiple ground glass opacities with peripheral lung consolidations.³² If these atypical findings are identified (even in asymptomatic patients), the diagnosis of COVID-19 should be considered. CT stratification has been used to assess severity and is the most sensitive diagnostic test, detecting lesions that are sometimes not identified on plain chest radiography. This may be especially relevant in the early identification of cases, for example preoperatively in patients with suspected disease requiring surgery.

Laboratory

Regarding lab results, increased C-reactive protein (CRP) levels with normal procalcitonin and lymphopenia (<1100 cells/ μ l) are characteristic. It should be noted that severe cases (compared to moderate ones) more frequently presented intense lymphopenia, hypoalbuminemia and higher levels of ALT, LDH, PCR, ferritin and D-dimer, as well as IL-2R, IL-6, IL-10 and TNF- α .³³ Current evidence suggests that the exaggerated immune response mediated by the cytokine storm leads to acute lung injury and acute respiratory distress, which, without treatment and support, lead to death in a large proportion of patients.

In severe cases, it is recommended to rule out coinfections with other respiratory pathogens (Influenza A and B, Pneumococcus and Legionella) and to extract blood for cultures. In the first series published in China, 50% of the deceased presented a second infection during hospitalization.²⁰

Treatment

To date, there is no known effective treatment for COVID-19. However, several molecules have demonstrated in vitro activity against SARS-CoV2 and they are being investigated and used off-label.

There are currently various clinical trials underway from different initiatives, public and private, national and international, to try to establish which treatment may be effective for COVID-19.

The WHO has proposed an international clinical trial (SOLIDARITY trial) to evaluate the efficacy of the different therapeutic modalities proposed in affected countries, which have been used empirically or based on limited evidence.³⁴ It is an adaptive, open, randomized trial that allows the study

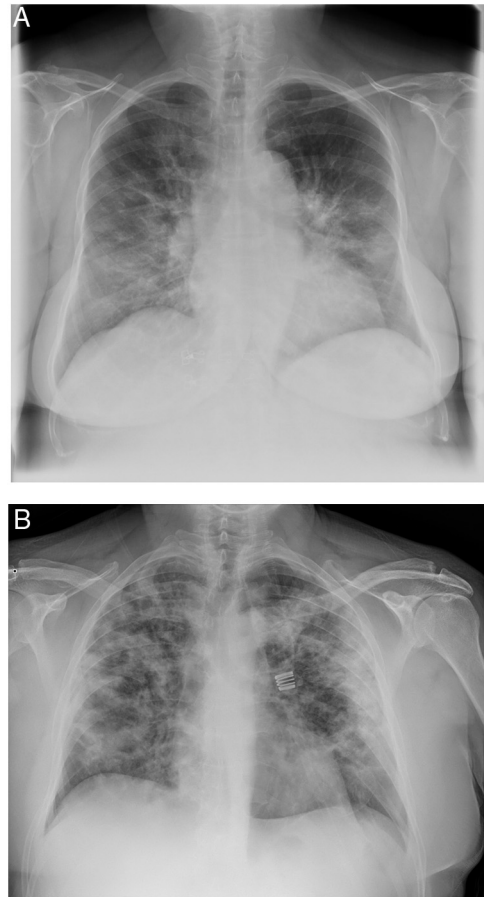


Fig. 1 – Examples of simple chest radiology of patients with pneumonia in the context of COVID-19.

A) Moderate pneumonia with reticular-alveolar consolidations in the bilateral lower and middle lungs; B) Severe pneumonia showing extensive bilateral involvement with alveolar opacities and a tendency towards consolidation in the periphery of both lungs.

branches to be modified as more data become available. Currently, the molecules under evaluation are:

- 1) Remdesivir (initially developed and previously evaluated for the Ebola virus).
- 2) Lopinavir/ritonavir (enhanced antiretroviral therapy used for HIV).
- 3) Lopinavir/ritonavir in combination with interferon β .
- 4) Chloroquine or hydroxychloroquine (CQ/HCQ) (antimalarial drugs that have been used successfully in China).³⁵
- 5) All of them will be compared with standard support treatment without any molecule with potential antiSARS-CoV2 action.

The Spanish Ministry of Health frequently updates the drugs proposed for treatment as data and new therapeutic options are registered. Currently some of the drugs being

considered in the protocol are: CQ/HCQ, lopinavir/ritonavir, remdesivir, tocilizumab, sarilumab, interferon beta-1B and interferon alfa-2B.³⁶

CQ/HCQ has demonstrated an antiviral effect *in vitro*, and it therefore has been considered a possible candidate for treatment and has been widely used empirically. However, other *in vivo* experiments with a murine model and SARS-CoV-2 have not shown that CQ/HCQ was able to inhibit viral replication. Following a recent French observational study, with no control arm or randomization and a very limited number of patients, it was suggested that combined treatment with CQ/HCQ and azithromycin could more rapidly reduce viral load.³⁷ In contrast, another trial (with 11 patients) found no benefit (clinical or antiviral) of this combined therapy in patients with severe COVID-19.³⁸ The real usefulness of this guideline has not yet been clearly established, although there are other multiple clinical trials under development (mostly in China).³⁹

When administering any of these off-label treatments, it is essential to evaluate the pharmacological interactions with the patient's current medication and potential toxicity. Serious interactions can occur (such as QT prolongation with CQ/HCQ)⁴⁰ and occasionally there are relevant contraindications (in cardiac or HIV-positive patients, etc.). Web portals such as www.hiv-druginteractions.org provide for quick consultation of interactions.

The utility of plasma from convalescent patients is being tested for the treatment of critically ill patients with COVID-19,⁴¹ and several laboratories around the world are investigating the development of a possible vaccine.

Implications for Surgeons

The AEC, as well as other national and international scientific societies, have issued clinical guidelines and recommendations to try to standardize practices at this critical moment, aimed at protecting both patients and healthcare professionals.⁴²⁻⁴⁴

Around the world, the available evidence has been used to dynamically update treatment guidelines in moderately and critically ill patients, diagnostic testing, tracing contacts, as well as the necessary protective measures for healthcare workers depending on the type of care or procedure to be carried out.⁴⁵ Any procedure with increased exposure to respiratory secretions (intubation, tracheostomy, ENT examination, etc.) is considered high risk. Other body fluids that may present viral load, such as saliva, feces and blood, in which viral load has been detected to a greater or lesser extent, are also considered a risk.⁴⁶

Regarding the possibility of aerosolization in surgical procedures (electric scalpel and other electronic devices, laparoscopic smoke, etc.), various studies have been carried out by surgical teams, and specific proposals have been made to reduce this aerosolization (smoke filtration with a water seal and bleach, suction of smoke from the electric scalpel, etc.). In any case, and given the possibility of this infection route, it is essential that all operating room personnel have adequate and complete personal protective equipment, especially face protection (FFP2/FFP3/N95 masks, closed goggles and shields when needed).

After the experience in China and Italy, some important measures have been proposed for laparoscopy:⁴⁷ minimize the dispersion of aerosols, avoiding uncontrolled leakage of gas/fluids through trocars or incisions; use closed filtration and evacuation systems for smoke; use the lowest possible gas pressure and the lowest intensity programs for electro-coagulation. It is also essential to adequately train and instruct operating room staff in this regard.

Specific Considerations for the Field of Surgery

Elective Surgery

Under the circumstances of a pandemic, the high number of patients affected simultaneously saturates healthcare services. In the case of COVID-19 (due to its ability to produce severe respiratory symptoms), there is an increased demand for ventilators and hospital or ICU beds for these patients. Therefore, in anticipation of the need for these resources, it has been proposed to delay all elective surgical procedures when possible, always considering the local epidemiological situation and the resources of each hospital. Patients with a benign pathological process and/or with a low risk of complications may be postponed without a problem. In other elective cases in which there is some risk of complication due to not performing the intervention, the urgency of each case will be assessed individually (considering the benefit/risk), but postponing is recommended as long as possible until the current epidemiological situation is normalized.^{48,49}

Oncology Patients

Oncology patients can be especially affected during the pandemic period for several reasons⁵⁰:

- Greater susceptibility to infection due to the baseline disease or secondary to immunosuppression of adjuvant treatments (chemotherapy).
- Alteration of their treatment regimens (chemotherapy and radiotherapy) or inability to conduct scheduled surgical procedures, which may affect the course of their disease and/or prognosis.
- Complications of oncological disease that require urgent treatment or hospitalization and increase the risk of SARS-CoV-2 infection (bleeding, perforation or obstruction due to untreated stenosing tumors, thrombosis, other infections, etc.).

In case of suspicion and symptoms compatible with COVID-19, multiple international societies, such as the European Cancer Organization, advocate the prioritization of SARS-CoV-2 detection tests in these patients.⁵¹

Decisions on whether or not to proceed with elective surgery in cancer patients currently depend on the local epidemiological situation, availability of operating rooms and ICU at the corresponding hospital, disease status and the risk of progression or complications (individualized), assessment of surgical risk and potential complications of the procedure. In addition, specific assessment is necessary of possible pre/

postoperative COVID-19 infection as well as the individual risk in terms of the comorbidities of the patient, who must also be informed.⁵² Individualized decision-making is promoted by multidisciplinary committees,⁵³ and the creation of 'clean' hospitals where cancer patients can be referred has been proposed in high-incidence areas. In some cases, and depending on the type of tumor, even alternative treatments (such as extra cycles of chemotherapy) are proposed to control progression and/or delay surgery.⁵⁴

Urgent Surgery

Disease requiring urgent surgical management cannot be delayed or canceled despite the pandemic situation. In cases of pathological processes requiring surgery that cannot be postponed (appendicitis, peritonitis, etc.), several aspects must be evaluated when making decisions:

- Patient COVID-19 status: does the patient present a concomitant viral infection in addition to the surgical disease? This determination is essential for the patient's prognosis and surgical risk as well as for the surgical team, who must be adequately protected.
- Is there sufficient protective material (personal protective equipment [PPE])? Are the facilities satisfactory to operate safely?
- Are there any alternative treatments other than surgery that would be safe for the patient?

For this reason, medical societies like the AEC⁵⁵ and the American College of Surgeons⁵⁶ suggest determining the patient's COVID-19 status before proceeding with the surgical intervention in order to act in the safest way. All available means will be used to make this determination, ideally including RT-PCR and chest radiology (preferably CT scan). When it is not possible to determine COVID-19 status, or in uncertain cases, proceed with surgery under the assumption that the patient is positive, providing adequate protection for operating room personnel with complete PPE.

Some extra measures have also been suggested, such as delaying the entry of staff into the operating room as much as possible, that the procedure be carried out by the most experienced surgeon available and that all non-essential personnel leave the operating room before extubation.

As already mentioned, the use of the laparoscopic approach has generated great controversy because of possible aerosolization with the use of pneumoperitoneum. The Association of Surgeons of the United Kingdom and Ireland even recommended avoiding this route to only perform urgent open surgery in the context of the pandemic, which they subsequently rectified.⁵⁷ Others have debated that depriving the patient of the advantages of laparoscopy (less invasive access, shorter hospital stay and therefore less likelihood of infection in negative COVID patients, etc.) is not justified. At the present time, treatment should be individualized as much as possible, taking into consideration the patient's surgical needs, condition, COVID-19 status, available therapeutic alternatives and the hospital resources available (PPE, operating room, intensive care units, etc).

Health Personnel and Individual Protection

The availability of adequate material and sufficient PPE has been one of the most relevant issues since the start of the pandemic because of the global shortage and the many infections (and deaths) occurring among front-line healthcare workers.⁵⁸ The experience in Italy has been especially important in this regard, since a much higher number of infections was detected among healthcare personnel than in China, even leading to the closure of hospitals due to lack of personnel and the death of 25 doctors.^{59,60}

Unfortunately, the situation in Spain has developed in a way similar to Italy, and we are currently the country with the most infected health personnel (around 14%), which in many cases is secondary to the lack of adequate protection.

It is essential for any surgeon working with COVID-19 to have sufficient, quality PPE available.

Conclusions

The current SARS-CoV-2 coronavirus pandemic is the greatest challenge that contemporary medicine has ever experienced. It directly affects all surgeons, requiring their role within health institutions to be redefined and their usual therapeutic strategies to be rethought, while having to adapt to unfavorable working conditions in which surgeons may be seriously affected.

The very high incidence of SARS-CoV-2 infection requires surgeons to have an in-depth understanding of the disease, including daily tasks and medical treatments with which they are not familiar. Likewise, they need to adapt their practice to a critical situation, prioritizing safety in the work environment and care for the most serious patients, while considering options they usually do not consider, especially in emergencies. The need to know and implement strategies aimed at patients whose surgeries cannot be delayed, especially cancer patients, is essential to avoid what are called *secondary and tertiary victims of the pandemic*: infected healthcare workers and, above all, patients who ultimately receive suboptimal treatment.

It is essential to highlight that the current situation has made decision-making necessary in a scenario full of uncertainties, where the scientific evidence to support these decisions is scarce. Thus, although the effort of the health community continues to be intense, it is essential to constantly reevaluate each of the measures adopted. Being a surgeon in the era of COVID-19 requires maximum versatility, which means accepting that today's decisions may not be tomorrow's. Again, this is an opportunity to renew Deaver's aphorism that a surgeon is always more than just a doctor, yet never anything less.

Conflict of Interests

The authors have no conflict of interests to declare.

Acknowledgements

The authors would like to dedicate this article to the memory of Dr. Joaquín Díaz Domínguez, Head of General Surgery at

the Hospital Universitario La Paz, in Madrid. May he rest in peace.

Annex 1. Surgery-AEG-COVID-19 Collaborative Group

Esteban Martín-Antona, Estíbaliz Álvarez Peña, Alejandra García-Botella, Elena Martín Pérez, Mario Álvarez Gallego, Sagrario Martínez Cortijo, Isabel Pascual Migueláñez, Lola Pérez Díaz, José Luis Ramos Rodríguez, Eloy Espín-Basany, Raquel Sánchez Santos, Xavier Guirao Garriga, José Manuel Aranda Narváez and Salvador Morales-Conde.

REFERENCES

1. Búsqueda selectiva de artículos científicos sobre COVID-19 en PubMed [accessed 6 Apr 2020]. Available from: <https://www.ncbi.nlm.nih.gov/research/coronavirus/docsum>.
2. Página web de la organización Cochrane específica para COVID-19 [accessed 6 Apr 2020]. Available from: <https://www.cochranelibrary.com/es/covid-19>.
3. Página web de la revista The Lancet con selección de artículos científicos sobre COVID-19 [accessed 6 Apr 2020]. Available from: <https://www.thelancet.com/coronavirus>.
4. Página web de la revista Nature con selección de artículos científicos sobre COVID-19 [accessed 6 Apr 2020]. Available from: <https://www.springernature.com/gp/researchers/campaigns/coronavirus>.
5. Página web de la revista BMC (open access) con selección de artículos científicos sobre COVID-19 [accessed 6 Apr 2020]. Available from: <https://www.biomedcentral.com/collections/coronavirus>.
6. Página web de la revista JAMA con selección de artículos científicos sobre COVID-19 [accessed 6 Apr 2020]. Available from: <https://jamanetwork.com/journals/jama/pages/coronavirus-alert>.
7. Zhao WM, Song SH, Chen ML, Zou D, Ma LN, Ma YK, et al. The 2019 novel coronavirus resource. *Yi Chuan*. 2020;42:212–21. <http://dx.doi.org/10.16288/j.yczs.20-030>. PubMed PMID: 32102777.
8. Lam TT, Shum MH, Zhu HC, Tong YG, Ni XB, Liao YS, et al. Identifying SARS-CoV-2 related coronaviruses in Malayan pangolins. *Nature*.)2020;(Mar 26). <http://dx.doi.org/10.1038/s41586-020-2169-0> [Epub ahead of print] PubMed PMID: 32218527.
9. Datos de la secuencia génica del virus SARS-CoV-2 en la plataforma abierta Genbank [accessed 3 Apr 2020]. Available from: <https://www.ncbi.nlm.nih.gov/genbank/sars-cov-2-seqs/>.
10. WHO Coronavirus disease (COVID-2019) situation reports. Available from: <https://www.who.int/emergencies/diseases/novel-coronavirus-2019/situation-reports>.
11. Página web del Ministerio de Sanidad con documentos técnicos oficiales sobre COVID-19 y actualizaciones de situación diaria [accessed 17 Apr 2020]. Available from: <https://www.mscbs.gob.es/en/profesionales/saludPublica/ccayes/alertasActual/nCov-China/situacionActual.htm>.
12. WHO. Naming the coronavirus disease (COVID-19) and the virus that causes it. Available from: [https://www.who.int/emergencies/diseases/novel-coronavirus2019/technical-guidance/naming-the-coronavirus-disease-\(covid-2019\)-and-the-virus-that-causes-it](https://www.who.int/emergencies/diseases/novel-coronavirus2019/technical-guidance/naming-the-coronavirus-disease-(covid-2019)-and-the-virus-that-causes-it).
13. Página web del Ministerio de Sanidad con documentos oficiales para profesionales. Información técnica sobre COVID-19 [accessed 6 Apr 2020]. Available from: https://www.mscbs.gob.es/en/profesionales/saludPublica/ccayes/alertasActual/nCov-China/documentos/20200326_ITCoronavirus.pdf.
14. van Doremalen N, Bushmaker T, Morris DH, Holbrook MG, Gamble A, Williamson BN, et al. Aerosol and Surface Stability of SARS-CoV-2 as Compared with SARS-CoV-1. *N Engl J Med*.)2020;(Mar 17). <http://dx.doi.org/10.1056/NEJMc2004973> [Epub ahead of print] PubMed PMID: 32182409.
15. Kampf G, Todt D, Pfaender S, Steinmann E. Persistence of coronaviruses on inanimate surfaces and their inactivation with biocidal agents. *J Hosp Infect*. 2020;104:246–51. <http://dx.doi.org/10.1016/j.jhin.2020.01.022>. Epub 2020 Feb 6. Review. PubMed PMID: 32035997.
16. Rabenau HF, Cinatl J, Morgenstern B, Bauer G, Preiser W, Doerr HW. Stability and inactivation of SARS coronavirus. *Med Microbiol Immunol*. 2005;194:1–6. PubMed PMID: 15118911; PubMed Central PMCID: PMC7086689.
17. World Health Organization. Guide to Local Production: WHO-recommended Handrub Formulations. https://www.who.int/gpsc/5may/Guide_to_Local_Production.pdf.
18. Página web del Ministerio de Sanidad con documentos oficiales para profesionales. Información técnica sobre prevención y control de infección en COVID-19 [accessed 5 Apr 2020]. Available from: https://www.mscbs.gob.es/en/profesionales/saludPublica/ccayes/alertasActual/nCov-China/documentos/Documento_Control_Infeccion.pdf.
19. Lauer SA, Grantz KH, Bi Q, Jones FK, Zheng Q, Meredith HR, et al. The Incubation Period of Coronavirus Disease 2019 (COVID-19) From Publicly Reported Confirmed Cases: Estimation and Application. *Ann Intern Med*.)2020;(Mar 10). <http://dx.doi.org/10.7326/M20-0504> [Epub ahead of print] PubMed PMID: 32150748; PubMed Central PMCID: PMC7081172.
20. Huang C, Wang Y, Li X, Ren L, Zhao J, Hu Y, et al. Clinical features of patients infected with 2019 novel coronavirus in Wuhan, China. *Lancet*. 2020;395:497–506. [http://dx.doi.org/10.1016/S0140-6736\(20\)30183-5](http://dx.doi.org/10.1016/S0140-6736(20)30183-5). Epub 2020 Jan 24. Erratum in: *Lancet*. 2020 Jan 30. PubMed PMID: 31986264.
21. Wong SH, Lui RN, Sung JJ. Covid-19 and the Digestive System. *J Gastroenterol Hepatol*.)2020;(Mar 25). <http://dx.doi.org/10.1111/jgh.15047> [Epub ahead of print] Review. PubMed PMID: 32215956.
22. Guan WJ, Liang WH, Zhao Y, Liang WHR, Chen ZS, Li YM, et al. China Medical Treatment Expert Group for Covid-19. Comorbidity and its impact on 1590 patients with Covid-19 in China: A Nationwide Analysis. *Eur Respir J*. 2020. <http://dx.doi.org/10.1183/13993003.00547-2020>. in press.
23. Wu Z, McGoogan JM. Characteristics of and important lessons from the coronavirus disease 2019 (COVID-19) outbreak in China: summary of a report of 72314 cases from the Chinese Center for Disease Control and Prevention. *JAMA*. 2020. <http://dx.doi.org/10.1001/jama.2020.2648>. pmid:32091533.
24. Chen T, Wu D, Chen H, Yan W, Yang D, Chen G, et al. Clinical characteristics of 113 deceased patients with coronavirus disease 2019: retrospective study. *BMJ*. 2020;368:m1091. <http://dx.doi.org/10.1136/bmj.m1091>. PubMed PMID: 32217556.
25. Zhou F, Yu T, Du R, Fan G, Liu Y, Liu Z, et al. Clinical course and risk factors for mortality of adult inpatients with COVID-19 in Wuhan, China: a retrospective cohort study. *Lancet*.)2020;(Mar 11). pii: S0140-6736(20)30566-3. doi: 10.1016/S0140-6736(20)30566-3. [Epub ahead of print] Erratum in: *Lancet*. 2020 Mar 12;.. PubMed PMID: 32171076.
26. Guan WJ, Ni ZY, Hu Y, Liang WH, Ou CQ, He JX, et al. China Medical Treatment Expert Group for Covid-19. Clinical

- Characteristics of Coronavirus Disease 2019 in China. *N Engl J Med.*)2020;(Feb 28). <http://dx.doi.org/10.1056/NEJMoa2002032> [Epub ahead of print] PubMed PMID: 32109013.
27. Siddiqi HK, Mehra MK. COVID-19 Illness in Native and Immunosuppressed States: A Clinical-Therapeutic Staging Proposal. *J Heart Lung Transplant*, DOI: <https://doi.org/10.1016/j.healun.2020.03.012>.
 28. Corman VM, Landt O, Kaiser M, Molenkamp R, Meijer A, Chu DKW, et al. Detection of 2019 novel coronavirus (2019-nCoV) by real-time RT-PCR. *Euro Surveill.* 2020;25. <http://dx.doi.org/10.2807/1560-7917.ES.2020.25.3.2000045>. PubMed PMID: 31992387; PubMed Central PMCID: PMC6988269.
 29. Fang Y, Zhang H, Xie J, Lin M, Ying L, Pang P, et al. Sensitivity of Chest CT for COVID-19: Comparison to RT-PCR. *Radiology.* 2020;(Feb 19)200432.
 30. World Health Organization. Laboratory testing for coronavirus disease 2019 (COVID-19) in suspected human cases: interim guidance, 2 March 2020. World Health Organization. 2020, <https://apps.who.int/iris/handle/10665/331329>.
 31. Rodrigues JCL, Hare SS, Edey A, Devaraj A, Jacob J, Johnstone A, et al. An update on COVID-19 for the radiologist - A British society of Thoracic Imaging statement. *Clin Radiol.* 2020. pii: S0009-9260(20)30087-30088. doi: 10.1016/j.crad.2020.03.003. [Epub ahead of print] PubMed PMID: 32216962.
 32. Zhou Z, Guo D, Li C, Fang Z, Chen L, Yang R, et al. Coronavirus disease 2019: initial chest CT findings. *Eur Radiol.*)2020;(Mar 24). <http://dx.doi.org/10.1007/s00330-020-06816-7> [Epub ahead of print] PubMed PMID: 32211963.
 33. Chen G, Wu D, Guo W, Cao Y, Huang D, Wang H, et al. Clinical and immunologic features in severe and moderate Coronavirus Disease 2019. *J Clin Invest.*)2020;(Mar 27). pii: 137244. doi: 10.1172/JCI137244. [Epub ahead of print] PubMed PMID: 32217835.
 34. World Health Organization. Thailand joins the WHO "Solidarity Trial": global testing of effective treatments of COVID-19 across 8 countries – an aggressive effort to save lives from the pandemic (press release), 20 March 2020. <https://www.who.int/thailand/news/detail/20-03-2020-thailand-joins-the-who-solidarity-trial-global-testing-of-effective-treatments-of-covid-19-across-8-countries-an-aggressive-effort-to-save-lives-from-the-pandemic>.
 35. Chen Z, Hu J, Zhang Z, Jiang S, Han S., Yan D, et al. Efficacy of hydroxychloroquine in patients with COVID-19: results of a randomized clinical trial <https://doi.org/10.1101/2020.03.22.20040758>).
 36. Página web de la Agencia Española de Medicamentos y Productos Sanitarios [accessed 5 Apr 2020]. <https://www.aemps.gob.es/la-aemps/ultima-informacion-de-la-aemps-acerca-del-covid%e2%80%9119/tratamientos-disponibles-para-el-manejo-de-la-infeccion-respiratoria-por-sars-cov-2/?lang=en>.
 37. Gautret P, Lagier JC, Parola P, Hoang VT, Meddeb L, Mailhe M, et al. Hydroxychloroquine and azithromycin as a treatment of COVID-19: results of an open-label non-randomized clinical trial. *Int J Antimicrob Agents.* 2020;(Mar 20)105949. <http://dx.doi.org/10.1016/j.ijantimicag.2020.105949> [Epub ahead of print] PubMed PMID: 32205204.
 38. Molina JM, Delaugerre C, Goff JL, Mela-Lima B, Ponscarne D, Goldwirt L, et al. No Evidence of Rapid Antiviral Clearance or Clinical Benefit with the Combination of Hydroxychloroquine and Azithromycin in Patients with Severe COVID-19. *Infection Medecine et Maladies Infectieuses.* 2020. <http://dx.doi.org/10.1016/j.medmal.2020.03.006>.
 39. Zhang C, Huang S, Zheng F, Dai Y. Controversial treatments: an updated understanding of the Coronavirus Disease 2019. *J Med Virol.*)2020;(Mar 26). <http://dx.doi.org/10.1002/jmv.25788> [Epub ahead of print] Review. PubMed PMID: 32219882.
 40. Guastalegname M, Vallone A. Could chloroquine / hydroxychloroquine be harmful in Coronavirus Disease 2019 (COVID-19) treatment? *Clin Infect Dis.*)2020;(Mar 24). pii: ciaa321. doi: 10.1093/cid/ciaa321. [Epub ahead of print] PubMed PMID:32211771.
 41. Tanne JH. Covid-19: FDA approves use of convalescent plasma to treat critically ill patients. *BMJ.* 2020;368:m1256. <http://dx.doi.org/10.1136/bmj.m1256>. PubMed PMID: 32217555.
 42. Página web de la Asociación Española de Cirujanos con documentos sobre COVID-19 [accessed 7 Apr 2020]. Available from: https://www.aecirujanos.es/Documentos-de-posicionamiento-y-recomendaciones-de-la-AEC-en-relacion-con-la-cirugia-y-COVID19_es_1_152.html.
 43. Lamontagne F, Angus DC. Toward Universal Deployable Guidelines for the Care of Patients With COVID-19. *JAMA.*)2020;(Mar 26). <http://dx.doi.org/10.1001/jama.2020.5110> [Epub ahead of print] PubMed PMID: 32215641.
 44. Surviving Sepsis Campaign. COVID-19 Guidelines. Published March 20; 2020, <https://www.sccm.org/SurvivingSepsisCampaign/Guidelines/COVID-19>.
 45. Poston JT, Patel BK, Davis AM. Management of critically ill adults with COVID-19. *JAMA.* 2020. <http://dx.doi.org/10.1001/jama.2020.4914>. Published online March 26.
 46. Repici A, Maselli R, Colombo M, et al. Coronavirus (COVID-19) outbreak: what the department of endoscopy should know. *Gastrointest Endosc.*)2020;(Mar 14). pii: S0016-5107(20)30245-5. doi: 10.1016/j.gie.2020.03.019. [Epub ahead of print] PubMed PMID: 32179106; PubMed Central PMCID: PMC7102667.
 47. Zheng MH, Boni L, Fingerhut A. Minimally invasive surgery and the novel coronavirus outbreak: lessons learned in China and Italy. *Annals of surgery.* 2020. Accepted for publication, March 2020.
 48. Página web de la Society of American Gastrointestinal and Endoscopic Surgeons. Recomendaciones ante COVID-19 [consultado 7 Abr 2020]. Disponible en: <https://www.sages.org/recommendations-surgical-response-covid-19/>.
 49. Página web de la Asociación Española de Cirujanos. Recomendaciones en caso de cirugía y COVID-19 [accessed 7 Apr 2020]. Available from: [https://www.aecirujanos.es/files/noticias/152/documentos/Manejo_quirurgico_v2\(1\).pdf](https://www.aecirujanos.es/files/noticias/152/documentos/Manejo_quirurgico_v2(1).pdf).
 50. Liang W, Guan W, Chen R, Wang W, Li J, Xu K, et al. Cancer patients in SARS-CoV-2 infection: a nationwide analysis in China. *Lancet Oncol.* 2020;21:335-7.
 51. Página web de la European Cancer Organization. Recomendaciones sobre COVID-19 en pacientes con cancer [accessed 7 Apr 2020]. Available from: <https://www.ecco-org.eu/Global/News/Latest-News/2020/03/NEWS-Statement-on-COVID-19-from-the-European-Cancer-Organisation-Board-of-Directors>.
 52. Página web de la Asociación Española de Cirujanos. Recomendaciones pacientes oncológicos y COVID-19 [accessed 7 Apr 2020]. Available from: https://www.aecirujanos.es/files/noticias/152/documentos/Pacientes_oncologicos_y_covid19_v2.pdf.
 53. Ueda M, Martins R, Hendrie PC, McDonnell T, Crews JR, Wong TL, et al. Managing Cancer Care During the COVID-19 Pandemic: Agility and Collaboration Toward a Common Goal. *J Natl Compr Canc Netw.* 2020;(Mar 20):1-4. <http://dx.doi.org/10.6004/jnccn.2020.7560>.
 54. Página web de la Association of Coloproctology of Great Britain and Ireland. Recomendaciones en tratamiento de cáncer colorrectal y COVID-19 [accessed 7 Apr 2020]. Available from: <https://www.acpgbi.org.uk/content/uploads/2020/03/ACPGBI-statement-on-CRC-treatment-during-COVID-19-FINAL.pdf>.

55. Página web de la Asociación Española de Cirujanos. Recomendaciones en caso de cirugía de urgencias y COVID-19 [accessed 7 Apr 2020]. Available from: https://www.aecirujanos.es/files/noticias/152/documentos/Recomendaciones_AEC_en_CIRUGIA_DE_URGENCIASv2.pdf.
56. Página web del American College of Surgeons. Triage y COVID-19 en cirugía general urgente [accessed 7 Apr 2020]. Available from: <https://www.facs.org/covid-19/clinical-guidance/elective-case/emergency-surgery>.
57. Página web de la Association of Surgeons of Great Britain and Ireland. Recomendaciones en cirugía y COVID-19 [accessed 7 Apr 2020]. Available from: <https://www.asgbi.org.uk/index.asp>.
58. Zhang Z, Liu S, Xiang M, Li S, Zhao D, Huang C, et al. Protecting healthcare personnel from 2019-nCoV infection risks: lessons and suggestions. *Front Med.*)2020;(Mar 23). <http://dx.doi.org/10.1007/s11684-020-0765-x> [Epub ahead of print] PubMed PMID:32212058.
59. Rosenbaum L. Facing covid-19 in Italy—ethics, logistics, and therapeutics on the epidemic’s front line. *N Engl J Med.* 2020. <http://dx.doi.org/10.1056/NEJMp2005492>. pmid:32187459.
60. Anelli F, Leoni G, Monaco R, Nume C, Rossi RC, Marinoni G, et al. Italian doctors call for protecting healthcare workers and boosting community surveillance during covid-19 outbreak. *BMJ.* 2020;368(Mar 26):m1254. <http://dx.doi.org/10.1136/bmj.m1254>. PubMed PMID: 32217525.