

Controlled release behaviour of protein-loaded microparticles prepared via coaxial or emulsion electrospray

Ying Wang^{1,2}, Xiaoping Yang³, Wentao Liu⁴, Feng Zhang⁵, Qing Cai³ and Xuliang Deng^{1,2}

¹Department of Geriatric Dentistry, Peking University School and Hospital of Stomatology, Beijing 100081, China,

²Department of Prosthodontics, Peking University School and Hospital of Stomatology, Beijing 100081, China,

³State Key Laboratory of Organic-Inorganic Composites, College of Materials Science and Engineering, Beijing University of Chemical Technology, Beijing 100029, China, ⁴College of Animal Science and Veterinary Medicine,

Jilin University, Changchun, Jilin 130062, China, and ⁵The Oral Clinic of the 2nd Hospital of Beijing Armed Police Force, Beijing 100037, China

Abstract

Biodegradable poly (lactic-co-glycolic acid) (PLGA) microparticles are an effective way to achieve sustained drug release. In this study, we investigated a sustained release model of PLGA microparticles with incorporated protein via either emulsion or coaxial electrospray techniques. PLGA (75:25) was used as the carrier, and bovine serum albumin as a model protein. Coaxial electrospray resulted in a type of core-shell structure with mean diameters of $2.41 \pm 0.60 \mu\text{m}$ and a centralised protein distribution within the core. Emulsion electrospray formed bigger microparticles with mean diameters of $22.75 \pm 8.05 \mu\text{m}$ and a heterogeneous protein distribution throughout the microparticles. The coaxial electrospray microparticles presented a much slighter burst release than the emulsion electrospray microparticles. Loading efficiency was significantly higher ($p < 0.05$) in the coaxial group than emulsion group. This indicated that both emulsion and coaxial electrospray could produce protein-loaded microparticles with sustained release behaviour, but the former revealed a superior approach for drug delivery.

Keywords: microparticles, electrospray, controlled release, drug delivery

Introduction

The concept of using polymer-based sustained-release delivery systems to maintain therapeutic drug concentrations for extended periods has been accepted for decades. Drug carriers like microspheres can deliver molecules of interest over longer times than by standard bolus injection, while maintain therapeutic concentrations at target sites and reducing potential toxicity (Whittlesey and Shea, 2004). Consequently, the attempts to produce sustained-release microparticles were highlighted. Different ways, e.g. $W_1/O/W_2$ double emulsion, coacervation and spray, have been studied intensively (Gupta et al., 1998; Singh and O'Hagan, 1998; Sinha and Trehan, 2003; Dai et al., 2005; Freitas et al., 2005; Tamber et al., 2005). But, some of those techniques had numerous shortcomings,

including modest encapsulation efficiency, batch-nature of the process, difficulty to scale-up, poor control of the particle size distribution, difficulty to generate sufficiently small particles ($< 100 \text{ nm}$), poor repeatability and limitations with respect to encapsulation of hydrophilic agents (Jain, 2000; Almeria et al., 2011; Enlow et al., 2011). Recently, electrospray has attracted much attention in generating drug-loaded polymeric particle (Ding et al., 2005; Ciach, 2006; Xie et al., 2006). It utilises electrostatic forces to eject polymer solutions or melts into droplets, producing particles with diameters ranging from nanometres to micrometres after solvent evaporation. Electrosprayed microparticles have been regarded as effective drug carriers (Loscertales et al., 2002; Almeria et al., 2010).

Protein-loaded microparticles can generally be achieved by two different electrospray approaches: emulsion or

Address for correspondence: Xuliang Deng, Department of Geriatric Dentistry, 22 Zhongguancun Nandajie, Haidian District, Beijing 100081, China. Tel: +86 10 82195637. Fax: +86 10 82195581. E-mail: kqdengxuliang@bjmu.edu.cn

(Received 12 Oct 2012; accepted 20 Nov 2012)
<http://www.informahealthcare.com/mnc>

coaxial electrospray. Emulsion electrospray involves mixing of aqueous solution containing proteins with immiscible polymeric solution by ultrasonication (Xu and Hanna, 2006; Xie and Wang, 2007). Compared to other conventional producing methods, the second emulsion or high temperature is omitted in emulsion electrospray. It increases the drug-loading efficiency and is suited for encapsulation of thermosensitive bioactive compounds. However, it still involves the step of atomisation of protein aqueous solution in organic polymer solution, which causes bioactivity loss during ultrasonication (van de Weert et al., 2000). Besides, emulsion stability is also a crucial parameter for the process, together with other parameters as concentration, voltage and flow rate.

Coaxial electrospray was first reported by Loscertales et al. (2002). Two immiscible solutions are coaxially and simultaneously electrosprayed through two separate feeding channels into one nozzle. The eventual jet, by which the outer polymeric solution encapsulates the inner proteinaceous liquid, breaks into droplets to generate microparticles with core-shell structure. This technique is preferred for preparing protein-loaded microcapsules, because it totally eliminates the emulsion step that is basically unsuitable for sensitive biomacromolecules (Xie et al., 2008; Wu et al., 2009). Xie et al. (2008) have used poly (lactide-co-glycolide) (PLGA) dichloroform solution coating protein aqueous solution via coaxial electrospray and encapsulating bovine serum albumin (BSA) or lysozyme inside microparticles. Poly (ethyl glycol) was included in the core to modify the electrospray process and drug release behaviour. Coaxial electrospray is envisioned a promising approach to prepare biomacromolecule-loaded microcapsules for controlled drug delivery applications. Because of its complexity, however, coaxial electrospray is not popular as single needle electrospray.

In this study, we fabricated BSA-loaded core-shell microcapsules by coaxial electrospray. To modify the release of hydrophilic protein, the inner liquid was prepared by mixing BSA/H₂O solution into PLGA/trifluoroethanol solution, to obtain a kind of matrix-type delivery system in the core and a wholly reservoir-type with the PLGA shell. Emulsion electrospray was also performed. Both systems were compared in terms of the processing set-up and microparticles characterisation as well as the release kinetics.

Materials and methods

Materials

PLGA with a lactide-glycolide molar ratio of 75:25 (MW, 10 kDa) was obtained from Birmingham Polymers (Birmingham, AL). BSA (purity 98%), fluorescein isothiocyanate-conjugated BSA (FITC-BSA) (MW 67 kDa) was purchased from Beijing Biosynthesis Biotechnology Co. Ltd (Beijing, China). Rhodamine B (purity 80%) was purchased from Sigma-Aldrich (St. Louis, MO). Organic solvents 2,2,2-trifluoroethanol (TFE) (purity 99.9%) and trichloromethane (THM) (purity 99.0%) were supplied by Sinapharm Chemical Reagent Beijing Co. Ltd (Beijing, China) and used directly. PBS (PH7.4) was purchased from Beijing Zoman Biotechnology Co. Ltd (Beijing, China).

Coaxial electrospray

BSA was dissolved in deionised water at a specified concentration and the aqueous solution was mixed into PLGA/TFE solution to obtain the core solution. The shell solution was set at 3% w/v PLGA/TFE and the concentration of inner solution was tried several times before the most appropriate concentration was determined. The two solution was electrosprayed from a 20 mL syringe with a steel needle (inner diameter of 0.5 and 0.8 mm, respectively) both at a rate of 0.8 mL/h continuously with a programmable syringe pump (Top 5300, Japan). A voltage (15 kV) was applied to the tip of the needle by the use of a high-voltage supply (DW-P303-1AC, China) with a collection distance of 20 cm. All the formulas used in this study are presented in Table 1. Electrosprayed microparticles were collected on a plate covered with aluminium foil. They were freeze dried for 1 day before further characterisation.

Emulsion electrospray

PLGA/THM solutions were prepared by dissolving PLGA in trichloroform as the continuous oil phase, with BSA dissolved in deionised water as the inner aqueous phase.

Table 1. Preparation parameters of coaxial electrospray used in this study.

Sample	Theoretical drug loading (w/w%)	Compositions				Diameter (µm)	Loading efficiency (%)
		Core solution (v/v = 1/5)		Shell solution			
		BSA/DI water (w/v%)	PLGA/TFE (w/v%)	PLGA/TFE (w/v%)			
a-0% PLGA _{in}	5	0.15	0	3	-	83.15 ± 2.78	
b-6% PLGA _{in}		4.65	6	3	2.25 ± 0.56	82.04 ± 3.46	
c-5% PLGA _{in}		4.15	5	3	2.37 ± 0.56	82.57 ± 3.02	
d-4% PLGA _{in}		3.65	4	3	2.41 ± 0.60	82.35 ± 3.08	
e-4% PLGA _{in}	3	2.19	4	3	2.39 ± 0.33	87.51 ± 3.53	
f-4% PLGA _{in}	1	0.73	4	3	2.39 ± 0.56	88.93 ± 3.77	
g-4% PLGA _{in}	0	0	4	3	2.37 ± 0.60	0	

Table 2. Preparation parameters of emulsion electrospray used in this study.

Sample	Theoretical drug loading (w/w%)	Compositions of emulsion (W/O = 1/10 in v/v)		Diameter (μm)	Loading efficiency (%)
		BSA/H ₂ O (w/v%)	PLGA/THM (w/v%)		
<i>h</i> -2% PLGA	5	1	2	22.26 \pm 5.40	74.65 \pm 4.32
<i>i</i> -4% PLGA		2	4	22.12 \pm 5.25	73.97 \pm 3.98
<i>j</i> -6% PLGA		3	6	22.75 \pm 8.05	74.34 \pm 4.02
<i>k</i> -8% PLGA		4	8	23.12 \pm 4.73	74.39 \pm 3.24
<i>l</i> -6% PLGA	3	1.8	6	22.82 \pm 4.95	75.83 \pm 4.36
<i>m</i> -6% PLGA	1	0.6	6	22.34 \pm 4.68	82.31 \pm 4.34
<i>n</i> -6% PLGA	0	0	6	22.77 \pm 4.79	0

The two immiscible solutions were mixed and emulsified by ultrasonication for 30 s, and then electrosprayed from a 20 mL syringe with a steel needle (inner diameter of 0.6 mm) at a rate of 1.8 mL/h continuously with a programmable syringe pump (Top 5300, Japan). A voltage of 10 kV was applied to the tip of the needle by the use of a high-voltage supply (DW-P303-1AC, China) with a collection distance of 20 mm. All the formulas used for emulsion electrospray in this study are presented in Table 2.

Morphological characterisation of electrospray microparticles

Scanning electron microscopy

Electrosprayed microparticles, mounted on metal stubs using conductive double-sided tape, were sputter coated with gold under an argon atmosphere. Microparticle morphology was examined by scanning electron microscope (SEM, S-450; Hitachi Global, Japan) at an accelerating voltage of 10 kV. Microparticle diameters were analysed with Image J software (National Institutes of Health, Bethesda, MD). Approximately 150 counts for each type of microparticles were used to calculate the diameter.

Transmission electron microscopy

The microstructure of BSA-loaded microparticles was examined using an H-7650B (Hitachi Global) transmission electron microscope (TEM) equipped with a CCD camera, and operated at 80 kV. The samples for TEM observation were prepared by direct deposition of electrosprayed microparticles onto copper grids.

Laser scanning confocal microscopy

To visualise the presence and distribution of the proteins in the electrosprayed microparticles, FITC-BSA was used instead and fluorescent rhodamine B (50 $\mu\text{g}/\text{mL}$) was added into PLGA/THM or PLGA/TFE shell solutions. Fluorescent-stained microparticles were emulsion and coaxial electrosprayed as described above, collected on glass slides, and then observed by laser scanning confocal microscopy (LSCM; ZEISS LSM Exciter 5 System, Carl Zeiss, Germany). The excitation wavelengths for rhodamine B and FITC-BSA were 559 and 488 nm, respectively, and

multi-track images were captured with a 63 \times /1.40 NA objective.

Determination of protein loading efficiency

The total protein content was determined according to a reported method (Sah, 1997) with some modification. Briefly, microparticles ($n=8$, 50 mg for each) were incubated in 3 mL DMSO for 1 h, then 4 mL 0.2 M NaOH solution containing 0.5% SDS was added for a further 1 h incubation at room temperature. The protein concentration in the solution was measured by the Micro-BCATM assay (Pierce, Rockford, IL). Results are presented as loading efficiency values, which indicated the percentage of protein loaded in the microparticles with respect to the total amount of protein used in the process. Blank microspheres were used as reference.

In vitro release study

The *in vitro* release study was performed in PBS (pH 7.4), and samples were incubated with shaking at 65 rpm at 37°C. Initially, 3 mL 0.01 M PBS water was added to a sealed vial containing 50 mg BSA-loaded microparticles, and the system was maintained at the pre-set conditions for different times. At each time point, all the liquid was taken out by centrifugation and the vial was refilled with 3 mL fresh PBS. The BSA concentration in the collection supernatant was analysed by the Micro-BCATM assay (Pierce). The results for the release test are presented as cumulative release as a function of time: cumulative release (%) = Mt/Ml , where Mt is the amount of BSA released at time t and Ml is the total amount of BSA loaded in the microparticles determined by protein loading efficiency. For each group, the assay samples were taken in triplicate ($n=3$) at each time interval.

Statistical analysis

Statistical analysis was conducted using one-way ANOVA by SPSS software. Data were displayed as mean \pm SD and statistical significance was set at $p < 0.05$.

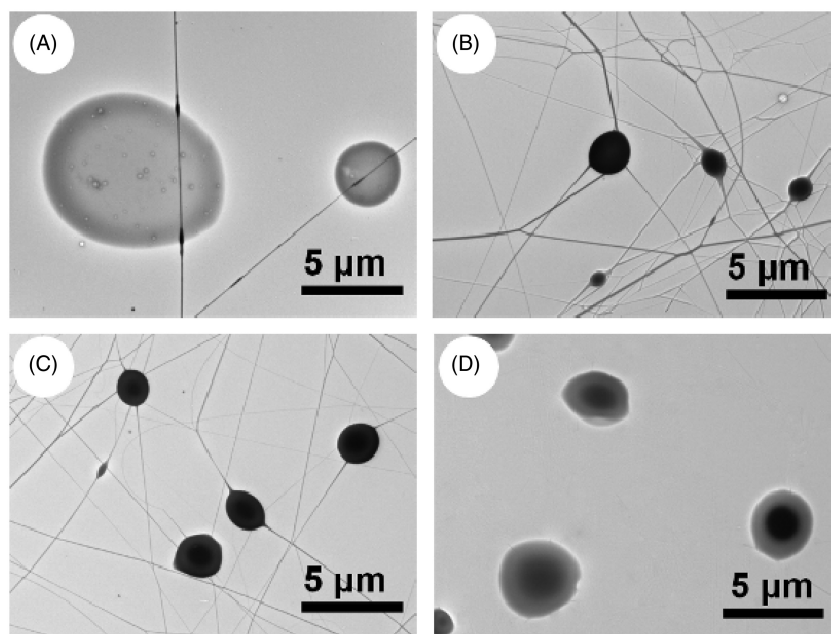


Figure 1. TEM images of microparticles prepared by coaxial electro-spray technique. (A) Formula *a*-0% PLGAin; (B) formula *b*-6% PLGAin; (C) formula *c*-5% PLGAin and (D) formula *d*-4% PLGAin.

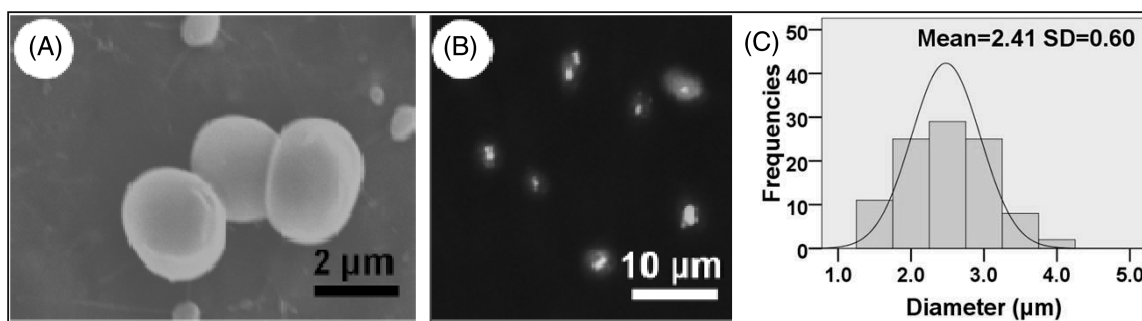


Figure 2. SEM image (A) and LCSM image (B) and the diameter distributions (C) of microparticles prepared by coaxial electro-spray technique of formula *d*-4% PLGAin.

Results

Characterisation of coaxial electro-sprayed microparticles

Different formulas were attempted using coaxial electro-spray to obtain core-shell structure microparticles. The outer flow was set 3wt% PLGA/TFE solution. When the inner flow was completely BSA aqueous solution, no apparent core-shell structured microparticles could be detected (formula *a*-0% PLGA in, Figure 1A). Only nanopores were scattered inside the electro-sprayed microspheres. To increase the viscosity of the inner flow, PLGA/TFE solutions with different concentrations were applied. By dropping BSA aqueous solution into PLGA/TFE solutions, BSA nano-powders suspended in PLGA solutions were prepared and supplied as inner flow with PLGA/TFE outer solution, and coaxial electro-sprayed. The viscosity of the inner solution had a significant effect on the morphology of coaxial electro-sprayed microparticles. As shown in Figure 1(B)–(D),

distinct core-shell structured microparticles formed in all the three cases. However, fibrils could not be avoided completely, if the concentration of the inner PLGA/TFE solution was above 5wt% (formula *b*-6% PLGAin and *c*-5% PLGAin). Satisfactory core-shell structured microparticles (formula *d*-4% PLGAin) resulted when the concentration of inner PLGA/TFE solution was 4wt%.

SEM showed that microparticles made from formula *d*-4% PLGAin had a relatively uniform spherical morphology, with an average diameter of $2.41 \pm 0.60 \mu\text{m}$ analysed by Image J (Figure 2A). To visualise the protein distribution within the coaxially electro-sprayed microparticles, 50 $\mu\text{g/mL}$ fluorescent rhodamine B was introduced into the outer solution and FITC-BSA was used instead. The microparticles were prepared under exactly the same conditions as above and observed on LCSM. The red stain was attributed to rhodamine B, representing the shell region, whereas the green stain relating to FITC-BSA confirmed the encapsulation of protein inside the core area of the

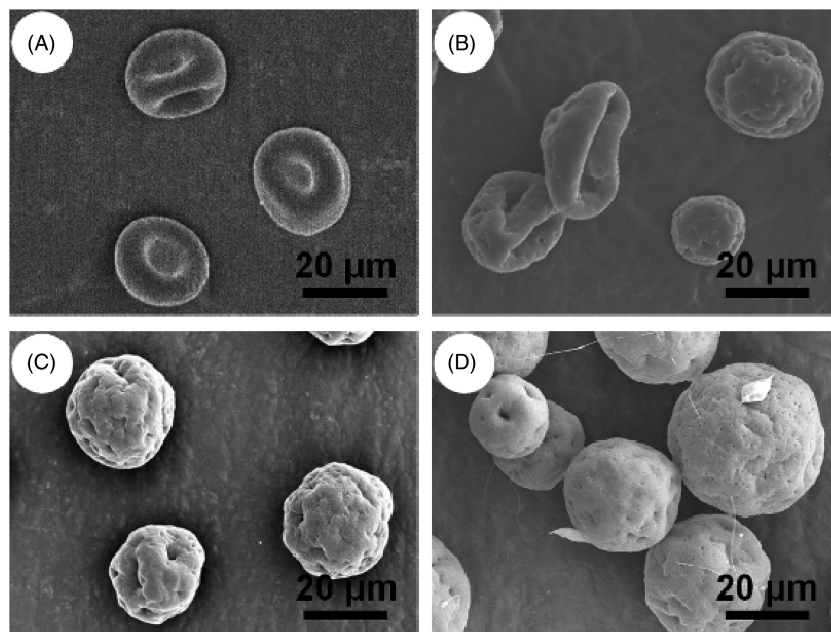


Figure 3. SEM images of microparticles prepared by emulsion electro spray technique. (A) formula *h*-2% PLGA; (B) formula *i*-4% PLGA; (C) formula *j*-6% PLGA and (D) formula *k*-8% PLGA.

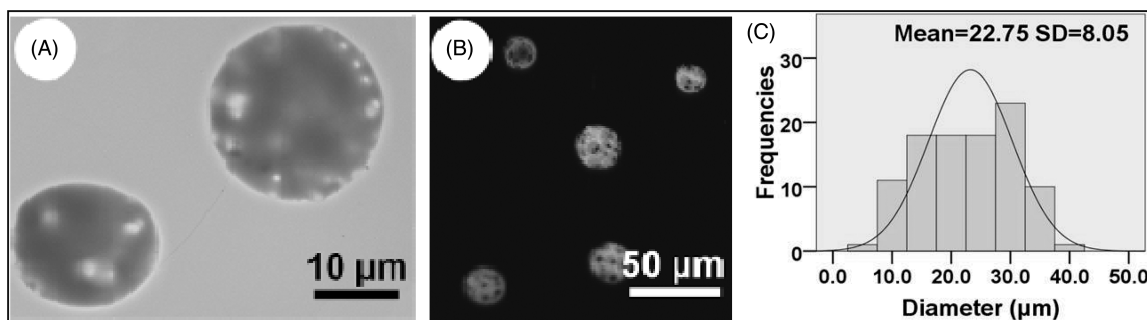


Figure 4. TEM image (A) and LCSM image (B) of microparticles prepared by emulsion electro spray technique and the diameter distributions of formula *j*-6% PLGA (C).

microparticles (Figure 2B). The green fluorescence turned out to be yellowish because it blended with the red stain of rhodamine B in the shell.

Characterisation of emulsion electro spray microparticles

In addition to coaxial electro spray, microparticles can be obtained from a wide range of polymeric solution concentrations using emulsion electro spray. As illustrated in Figure 3, as the concentration of PLGA/TFE solution increases from 2 to 8wt%, almost no fibre structures were formed. However, the morphology of emulsion electro sprayed microparticles changed significantly depending on polymeric solution concentration. At low solution concentration (formula *h*-2% PLGA and *i*-4% PLGA), the microparticles were shrunk and collapsed (Figure 3A and B). By increasing the concentration to 6wt%, fine-structured microspheres resulted with relatively uniform size (formula *j*-6% PLGA, Figure 3C), which was analysed as $22.75 \pm 8.05 \mu\text{m}$ (Figure 4C). 8wt% seemed a little

concentrated for emulsion electro spray, because particle sized deviated to a certain extent and fibrils began to show up (formula *k*-8% PLGA, Figure 3D).

Emulsion electro sprayed microparticles demonstrated a completely different interior structure from those coaxially electro sprayed. BSA aqueous solution was dispersed throughout the microparticles, as confirmed by Figure 4(A) and (B). TEM observation showed the porous structure and yellowish stain (a combination of red stain of rhodamine B and green stain of FITC-BSA) distributed over the microparticles. Some BSA was close to the surface of the microparticles with strong green staining at the peripheral region. There was some strong green (FITC-BSA) staining near the surface of the microparticles (Figure 2B).

Protein loading efficiency and in vitro release

Protein loading efficiencies under different formulas were measured, and those data are listed in Tables 1 and 2. On average, the loading efficiencies of emulsion electro spray

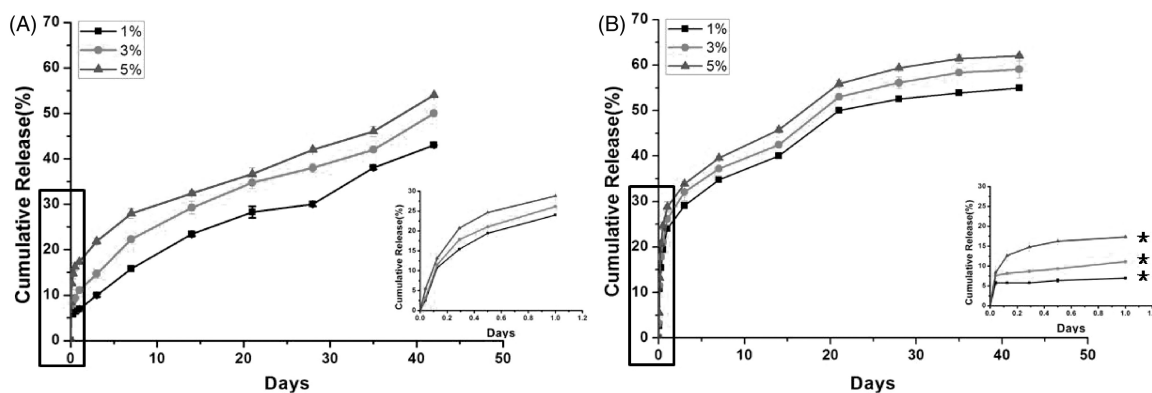


Figure 5. Protein release profiles for the electrospay microparticles. (A) Protein release profiles for the emulsion electrospay microparticles theoretically loaded with 1wt%, 3wt% and 5wt% BSA. (B) Protein release profiles for the coaxial electrospay microparticles theoretically loaded with 1wt%, 3wt% and 5wt% BSA. (* $p < 0.05$).

microparticles were a little lower than those of coaxial electrospay microparticles. The loading efficiencies in both cases decreased as the drug loading increased. The *in vitro* release behaviour of these BSA-loaded microparticles was compared. For the emulsion electrospay microparticles (Figure 5A), a significant initial burst release was detected. Within 1 day, >30% of the loaded BSA had been released. Afterwards, the release rate slowed down but was sustainable, and the cumulative BSA release was 50–60% at the end of 6 weeks. The coaxial electrospay microparticles showed better release behaviour than the emulsion electrospay microparticles (Figure 5B). The initial burst release was minor. The BSA release remained at a steady rate within the experimental period. About 40–50% BSA was released up to day 42. For all three emulsion groups, a burst release was observed within 24 h, which was $24.02\% \pm 0.27\%$, $26.15\% \pm 0.35\%$ and $28.80\% \pm 1.14\%$ for the 1%-BSA, 3%-BSA and 5%-BSA microparticles, respectively. These values were significantly different ($p > 0.05$) from the coaxial groups when compared between the same theoretical loading efficiency (*d*-4% PLGAin and *j*-6% PLGA, *e*-4% PLGAin and *l*-6% PLGA, *f*-4% PLGAin and *m*-6% PLGA) groups at 24 h time point. In both cases, one thing in common was that the BSA release rates were accelerated as drug loading increased.

Discussion

Most clinical diseases require long-term treatment with bioactive factors. Sustained release from polymeric matrixes has been proven as the simplest and most effective strategy to achieve that goal (Malathi and Balasubramanian, 2011). Tablets, films, gels, microparticles and nanoparticles are all possible pharmaceutical preparations. Microparticles and nanoparticles are preferred over other methods as a result of their flexibility in preparation and use (Xu et al., 2009). Electrospayed microparticles have attractive features in narrow particle size distribution and minor loss of protein bioactivity in comparison with the conventional double-emulsion method,

which has made them attractive to researchers (Scholten et al., 2011). Many kinds of materials can be used to produce microparticles with drug or protein incorporated in by electrospay technique. Biodegradable alginate had been electrospayed into micro size and with BSA encapsulated (Suksamran et al., 2009).

Emulsion electrospay was investigated in the present study. In this case, protein could be entrapped in the electrospayed microparticles by dissolving in water and dispersing in polymeric inorganic solution by ultrasonication. Theoretically, the proteins should be distributed evenly throughout the electrospayed microparticles, however, they were scattered throughout the microparticles in various sizes in most cases. As shown in Figure 4, BSA in emulsion electrospayed PLGA microparticles was unevenly loaded. Especially at the edge of the microparticles, stronger BSA signals were detected, as confirmed by the green stain. This distribution pattern is closely related to the structure and stability of water-in-oil emulsions (Yang et al., 2011). The aqueous phase composed of BSA dissolved in deionised water was dispersed into the organic phase composed of PLGA/THM by ultrasonication. The scattered aqueous droplets might merge into drops of various sizes during emulsion electrospay. Therefore, emulsion electrospay microparticles had a clear initial burst release owing to the rapid diffusion of water into the microparticles surface and the rapid dissolution of BSA near the surface into the release medium (Figure 5A). The burst release would be more significant if the drug loading were increased.

In contrast, the development of coaxial electrospay has provided an efficient way to ameliorate the protein release behaviour. Through coaxial jets, a type of core-shell nanoparticles are generated by electrohydrodynamic forces, in which proteins are usually embedded in the core region (Loscertales et al., 2002; Hwang et al., 2008; Xie et al., 2008). As illustrated in Figure 2, BSA could be only found in the centre of coaxially electrospayed microparticles with no hint of existence in the PLGA shell. These core-shell structured coaxial microparticles provide a barrier membrane that controls the protein diffusion rate

(Lee et al., 2010), thus ensuring that BSA is released at a constant rate with an insignificant initial burst release (Figure 5B), which was more welcomed by practical application for the fine control of release behaviour. A research showed that PVA coated PLGA microparticles not only presented a decrease in the drug release rate during the initial burst, but also the percentage of the drug released by diffusion is substantially reduced, from 77% (TFE) to 52% (TFE-DMSO) compared to uncoated ones (Almeria et al., 2011). The DMSO helped PLGA dissolve and swell in TFE, which made the protein released from the microparticles more easily and thoroughly. Those coating PVA served as a barrier that slow down the drug release rate. And the shell PLGA in our coaxial electrospayed experiment just played the same role in drug release. The hydrophilic BSA dissolution into water was the key step during the drug release process. Apart from the surface location, the porous structure (Figure 4A) allowed the water entered inside of the emulsion microparticles faster. However, the hydrophobic PLGA shell (Figure 1D) of coaxial microparticles slowed down the water contact with BSA in the core, thus significantly reduced burst release.

Microparticle morphology might be another factor to consider for practical application. Microparticles from emulsion electrospay usually demonstrated a shrunken and wrinkled appearance, owing to the evaporation of a large amount of solvent in electrospayed drops (Figure 3). In fact, this was a common phenomenon in microparticle formation using electrospay, which remarkably depended on concentrations of polymeric solutions. This damage to particle morphology could be weakened by increasing the concentration of the polymeric solution, however, it could not be too high for allowing fibre structure to occur (Enayati et al., 2009). Nevertheless, the coaxially electrospayed microparticles resulted in much better morphology. As shown in Figure 2(A), the core-shell structured microparticles had a relatively smooth surface with small pinholes. The morphology difference in the two groups of electrospay microparticles suggested an additional reason for the rapid initial release from emulsion electrospay microparticles. Water molecules penetrated into and BSA molecules diffused out of the microparticles rapidly through the micropores and microducts on the surface of the particles.

Additionally, there were other two notable differences existing between the emulsion and coaxial electrospayed microparticles in this study. Firstly, the mean diameter of the emulsion electrospayed microparticles was much bigger than that of the coaxial electrospayed ones. As is known to all, the diameter of electrospayed microparticles could be affected by factors such as flow rate, polymer concentration, voltage, conductivity of the solution and so on (Xie et al., 2006). To produce microparticles by emulsion electrospay, THM was used to form the W/O emulsion. However, TFE was applied in the coaxial electrospay to ensure the stable formation of core-shell microparticles. The big difference in the polarity and conductivity between THM and TFE had significantly affected the forming and splitting of the droplets. On the other hand, the coaxial

electrospray group had an apparently higher BSA loading efficiency than the emulsion electrospay group (Tables 1 and 2). One of the reasons for this was that some protein denatured during the ultrasonication used for emulsion preparation (Wang et al., 2004). Besides, BSA encapsulated in emulsion microparticles had a direct contact with the air, which may cause more protein loss during the electrospun process. Moreover, the drug loading could be increased by increasing inner protein aqueous solution flow rate or increasing inner protein concentration. But the inner solution flow had a great impact on microparticles formation (Xie et al., 2008). Coaxial electrospay had avoided the shortcomings of emulsion electrospay, these features had made coaxial electrospay further favourable for preparing protein-loaded microparticles in comparison to emulsion preparation.

Conclusion

In conclusion, both emulsion and coaxial electrospay techniques can produce protein-loaded microparticles to achieve sustained drug release. The core-shell structure of the coaxially electrospayed microparticles provided them with a greater ability to control release behaviour and guaranteed higher drug loading efficiencies in comparison with emulsion electrospayed microparticles. This study indicated that the coaxial electrospay might be a superior approach to achieve sustained drug release with a minor initial burst release, which is preferable for clinical use.

Declaration of interest

The authors report no conflict of interest. The authors alone are responsible for the content and writing of this article.

The authors acknowledge the National Basic Research Program of China (2012CB933900), International Science and Technology Cooperation Program (2010DFA51500), National Natural Science Foundation of China (51073016 and 81171000) and the Program for New Century Excellent Talents in University (NCET-11-0556).

References

- Almeria B, Deng W, Fahmy TM, Gomez A. Controlling the morphology of electrospay-generated PLGA microparticles for drug delivery. *J Colloid Interface Sci*, 2010;343:125-33.
- Almeria B, Fahmy TM, Gomez A. A multiplexed electrospay process for single-step synthesis of stabilized polymer particles for drug delivery. *J Control Release*, 2011;154:203-10.
- Ciach T. Microencapsulation of drugs by electro-hydro-dynamic atomization. *Int J Pharm*, 2006;324:51-5.
- Dai C, Wang B, Zhao H. Microencapsulation peptide and protein drugs delivery system. *Colloids Surf B Biointerfaces*, 2005;41:117-20.
- Ding L, Lee T, Wang CH. Fabrication of monodispersed Taxol-loaded particles using electrohydrodynamic atomization. *J Control Release*, 2005;102:395-413.

- Enayati M, Ahmad Z, Stride E, Edirisinghe M. Preparation of polymeric carriers for drug delivery with different shape and size using an electric jet. *Curr Pharm Biotechnol*, 2009;10:600-8.
- Enlow EM, Luft JC, Napier ME, DeSimone JM. Potent engineered PLGA nanoparticles by virtue of exceptionally high chemotherapeutic loadings. *Nano Lett*, 2011;11:808-13.
- Freitas S, Merkle HP, Gander B. Microencapsulation by solvent extraction/evaporation: Reviewing the state of the art of microsphere preparation process technology. *J Control Release*, 2005;102:313-32.
- Gupta RK, Singh M, O'Hagan DT. Poly(lactide-co-glycolide) microparticles for the development of single-dose controlled-release vaccines. *Adv Drug Deliv Rev*, 1998;32:225-46.
- Hwang YK, Jeong U, Cho EC. Production of uniform-sized polymer core-shell microcapsules by coaxial electrospraying. *Langmuir*, 2008;24:2446-51.
- Jain RA. The manufacturing techniques of various drug loaded biodegradable poly(lactide-co-glycolide) (PLGA) devices. *Biomaterials*, 2000;21:2475-90.
- Lee YH, Mei F, Bai MY, Zhao S, Chen DR. Release profile characteristics of biodegradable-polymer-coated drug particles fabricated by dual-capillary electrospray. *J Control Release*, 2010;145:58-65.
- Loscertales IG, Barrero A, Guerrero I, Cortijo R, Marquez M, Ganan-Calvo AM. Micro/nano encapsulation via electrified coaxial liquid jets. *Science*, 2002;295:1695-8.
- Malathi S, Balasubramanian S. Synthesis of biodegradable polymeric nanoparticles and their controlled drug delivery for tuberculosis. *J Biomed Nanotechnol*, 2011;7:150-1.
- Sah H. A new strategy to determine the actual protein content of poly(lactide-co-glycolide) microspheres. *J Pharm Sci*, 1997;86:1315-18.
- Scholten E, Dhamankar H, Bromberg L, Rutledge GC, Hatton TA. Electrospray as a tool for drug micro- and nanoparticle patterning. *Langmuir*, 2011;27:6683-8.
- Singh M, O'Hagan D. The preparation and characterization of polymeric antigen delivery systems for oral administration. *Adv Drug Deliv Rev*, 1998;34:285-304.
- Sinha VR, Trehan A. Biodegradable microspheres for protein delivery. *J Control Release*, 2003;90:261-80.
- Suksamran T, Opanasopit P, Rojanarata T, Ngawhirunpat T, Ruktanonchai U, Supaphol P. Biodegradable alginate microparticles developed by electrohydrodynamic spraying techniques for oral delivery of protein. *J Microencapsul*, 2009;26:563-70.
- Tamber H, Johansen P, Merkle HP, Gander B. Formulation aspects of biodegradable polymeric microspheres for antigen delivery. *Adv Drug Deliv Rev*, 2005;57:357-76.
- van de Weert M, Hoehstetter J, Hennink WE, Crommelin DJ. The effect of a water/organic solvent interface on the structural stability of lysozyme. *J Control Release*, 2000;68:351-9.
- Wang J, Chua KM, Wang CH. Stabilization and encapsulation of human immunoglobulin G into biodegradable microspheres. *J Colloid Interface Sci*, 2004;271:92-101.
- Whittlesey KJ, Shea LD. Delivery systems for small molecule drugs, proteins, and DNA: The neuroscience/biomaterial interface. *Exp Neurol*, 2004;190:1-16.
- Wu Y, Yu B, Jackson A, Zha W, Lee LJ, Wyslouzil BE. Coaxial electrohydrodynamic spraying: A novel one-step technique to prepare oligodeoxynucleotide encapsulated lipoplex nanoparticles. *Mol Pharm*, 2009;6:1371-9.
- Xie J, Lim LK, Phua Y, Hua J, Wang CH. Electrohydrodynamic atomization for biodegradable polymeric particle production. *J Colloid Interface Sci*, 2006;302:103-12.
- Xie J, Ng WJ, Lee LY, Wang CH. Encapsulation of protein drugs in biodegradable microparticles by co-axial electrospray. *J Colloid Interface Sci*, 2008;317:469-76.
- Xie J, Wang CH. Encapsulation of proteins in biodegradable polymeric microparticles using electrospray in the Taylor cone-jet mode. *Biotechnol Bioeng*, 2007;97:1278-90.
- Xu Q, Hashimoto M, Dang TT, Hoare T, Kohane DS, Whitesides GM, Langer R, Anderson DG. Preparation of monodisperse biodegradable polymer microparticles using a microfluidic flow-focusing device for controlled drug delivery. *Small*, 2009;5:1575-81.
- Xu Y, Hanna MA. Electrospray encapsulation of water-soluble protein with polylactide. Effects of formulations on morphology, encapsulation efficiency and release profile of particles. *Int J Pharm*, 2006;320:30-6.
- Yang XY, Leonard A, Lemaire A, Tian G, Su BL. Self-formation phenomenon to hierarchically structured porous materials: Design, synthesis, formation mechanism and applications. *Chem Commun (Camb)*, 2011;47:2763-86.