







ARTICLE

<https://doi.org/10.1038/s41467-019-13222-1>

OPEN

Continuous-variable tomography of solitary electrons

J.D. Fletcher ¹, N. Johnson ^{1,2,6}, E. Locane³, P. See¹, J.P. Griffiths⁴, I. Farrer ^{4,7}, D.A. Ritchie ⁴, P.W. Brouwer³, V. Kashcheyevs ⁵ & M. Kataoka ^{1*}

A method for characterising the wave-function of freely-propagating particles would provide a useful tool for developing quantum-information technologies with single electronic excitations. Previous continuous-variable quantum tomography techniques developed to analyse electronic excitations in the energy-time domain have been limited to energies close to the Fermi level. We show that a wide-band tomography of single-particle distributions is possible using energy-time filtering and that the Wigner representation of the mixed-state density matrix can be reconstructed for solitary electrons emitted by an on-demand single-electron source. These are highly localised distributions, isolated from the Fermi sea. While we cannot resolve the pure state Wigner function of our excitations due to classical fluctuations, we can partially resolve the chirp and squeezing of the Wigner function imposed by emission conditions and quantify the quantumness of the source. This tomography scheme, when implemented with sufficient experimental resolution, will enable quantum-limited measurements, providing information on electron coherence and entanglement at the individual particle level.

¹National Physical Laboratory, Hampton Road, Teddington, Middlesex TW11 0LW, UK. ²London Centre for Nanotechnology and Department of Electronic and Electrical Engineering, University College London, Torrington Place, London WC1E 7JE, UK. ³Dahlem Center for Complex Quantum Systems and Institut für Theoretische Physik, Freie Universität Berlin, Arnimallee 14, 14195 Berlin, Germany. ⁴Cavendish Laboratory, University of Cambridge, J. J. Thomson Avenue, Cambridge CB3 0HE, UK. ⁵Department of Physics, University of Latvia, Jelgavas street 3, Riga LV 1004, Latvia. ⁶Present address: NTT Basic Research Laboratories, NTT Corporation, Atsugi, Japan. ⁷Present address: Department of Electronic & Electrical Engineering, The University of Sheffield, Mappin Street, Sheffield S1 3JD, UK. *email: masaya.kataoka@npl.co.uk

Initializing and measuring the wave-function of single freely-propagating particles are challenging but fundamental tasks for applications in quantum information processing and enhanced sensing^{1–10}. The recent development of semiconductor-based single-electron sources^{11–13} and ways of controlling electron propagation^{14–16} have created a new platform harnessing on-demand electronic excitations in this way. These schemes for single electron quantum optics require techniques to both control and probe the single excitations. Specific properties of the sources and the transmission channels into which excitations are launched give rise to different characteristic excitation energy, ejection dynamics, propagation velocity and interactions. As a result, new methods are demanded for reconstruction of the quantum state in different systems^{17,18}.

The key properties of the emitted electron stream are manifest in the first-order coherence, captured by Wigner quasi-probability function $W(E, t)$. The Wigner function $W(E, t)$ is not directly measurable, but projections along specific trajectories in the phase space of non-commuting variables (position–momentum, energy–time) can be accessed, enabling a tomographic reconstruction¹⁹ somewhat like X-ray tomography. Such measurements require a scheme to create and readout projections at different trajectories or mixing angles, for instance via free space evolution of the transverse wavefunction of atomic beams^{20,21} or by mixing of photons with a local optical field^{4,22}. In this way continuous-variable quantum tomography techniques, developed for atomic beams²⁰ and photonic modes²³, have been successfully adapted for on-demand electronic excitations^{17,24,25}.

In the case of a chiral one-dimensional electronic excitations the Wigner function can be written as

$$W(E, t) = \frac{1}{h} \int e^{i\epsilon/\hbar} \langle E - \epsilon/2 | \hat{\rho} | E + \epsilon/2 \rangle d\epsilon \quad (1)$$

where $\hat{\rho}$ is the density matrix of the emitted electrons and the energy eigenstates $|E\rangle$ form a complete basis for the propagating mode. The Wigner function of low energy excitations can be extracted by using two-particle interference of the electron beam with a modulated Fermi sea as a local oscillator^{17,18}. This is only possible in a restricted phase-space volume close to the Fermi energy ($E - E_F \ll 1$ meV) and is not viable over a wider range of parameters, such as excitations in a higher energy range¹⁵. It is also not possible where there is no Fermi sea, as in the case of isolated electrons travelling in a depleted lattice space without conduction-band electrons nearby^{15,26}. However, in these cases it is possible to interrogate the beam with a barrier in the beam path^{13,15,27}, an approach which can enable a different method of tomographic reconstruction of the Wigner function²⁸.

Here, we explore a tomographic technique to image the distribution of Wigner quasiprobability for electrons in phase space reconstructed from a set of projections acquired by energy and time selective transmission. The selective control of transmission is achieved by a dynamic barrier in the beam path synchronised with electron emission. This is a technique that is applicable over a wide range of energy and time scales. We use this approach to perform tomography of electrons emitted by an on-demand single-electron source, enabling us to directly characterise the energy-time distribution of excitations at a particular point in a beam path. Using the phase space density we quantify the quantum mechanical purity of the states. We also demonstrate readout and control of an important signature of ejection dynamics, a chirp due to correlation between arrival energy and time, which illustrates the power of the technique in controlling single electronic excitations.

Results

Electron tomography using time-dependent barriers. Marginal distributions at different projection angles in energy–time space can be measured using interaction with a time-dependent barrier in the beam path²⁸. We measure the transmission probability P_T for electrons filtered by a high-pass energy barrier with a linearly driven time-varying transmission threshold $E_T(t) = E_{T0} + \beta_E t$ as in Fig. 1a. The connection to the Wigner function $W(E, t)$ is established via

$$P_T = \iint W(E, t) T[E - E_T(t)] dE dt, \quad (2)$$

where $T[E - E_T(t)]$ can be interpreted as the time- and energy-dependent transmission quasiprobability of the barrier, which masks part of the Wigner distribution as in Fig. 1a.

For an intuitive understanding of our tomography protocol it is convenient to use polar coordinates θ, S as shown in Fig. 1a and methods. The sweep rate β_E sets a projection angle θ in the energy time plane via $\tan\theta = \beta_E/\beta_0$ (β_0 sets the energy/time aspect ratio). For a sharp threshold barrier with $T(E) = 1$ or 0 for $E > 0$ or $E < 0$, respectively, the derivative dP_T/dS is proportional to the integral of $W(E, t)$ along the line $E_T(t)$. The line S (indicated in Fig. 1a) is perpendicular to the $E_T(t)$ line and is akin to the detector coordinate in an X-ray tomography scheme. By measuring dP_T/dS systematically for various values of β_E and E_{T0} (to select the position along S) we obtain the Radon transform (sinogram) of $W(E, t)$. Its reconstruction is then possible using filtered back-projection to implement the inverse Radon transform (see methods).

Experimental scheme. Our device components, electron source and energy barrier, are defined by gates on a GaAs-based heterostructure²⁶, as shown in Fig. 1b. A tunable-barrier electron pump^{29,30} (left hand side) is operated using a periodic voltage $V_{G1}(t)$ (Fig. 1c, left hand side) applied to the left-most barrier, pumping one electron per cycle through the device at a repetition rate f giving a quantised pump current $I_p = ef$ ^{29,31–34}. The right hand barrier, controlled by V_{G2} determines the number of electrons pumped, and linearly controls the ejection energy¹⁵ (see Supplementary Fig. 1). After ejection, each electron follows a trajectory along the mesa edge governed by the side-wall potential and Lorentz force due to an externally applied perpendicular magnetic field B until it reaches the potential barrier controlled by voltage $V_{G3}(t)$ (Fig. 1c, right hand side)²⁶. The barrier control voltage $V_{G3}(t)$ is synchronised to $V_{G1}(t)$ with adjustable delay t_d ²⁷.

The edge gate (which depletes the region of carriers for negative gate voltages V_{G4} ^{26,35}), the injection energy (far above the Fermi energy—see Supplementary Note 1), and the travelling time and operation frequency (transit time much shorter than pumping repeat time) lead to one isolated electron being present in the edge channel at a time²⁶. In our implementation of the tomography scheme, $V_{G3}(t)$ controls the energy threshold $E_T(t)$ and therefore determines what proportion of the pumped current is transmitted $P_T = I_T/I_p$ (see methods). We use an arbitrary waveform generator to control the threshold barrier time dependence, which we set to have an adjustable linear ramp rate $\beta_E = -\alpha_h dV_{G3}(t)/dt$ near the moment of electron arrival, where $\alpha_h = (0.61 \pm 0.02)$ meV/mV (see Supplementary Note 1 and Supplementary Fig. 1) and $\beta_0 = (0.12 \pm 0.01)$ meV/ps (see Supplementary Note 3 and Supplementary Figs. 3, 4). We then shift the transmission mask in increments ΔS along the S -axis using a combination of time delay t_d and DC voltage shift V_{G3}^{DC} (which controls E_{T0}) for each angle θ and measure the

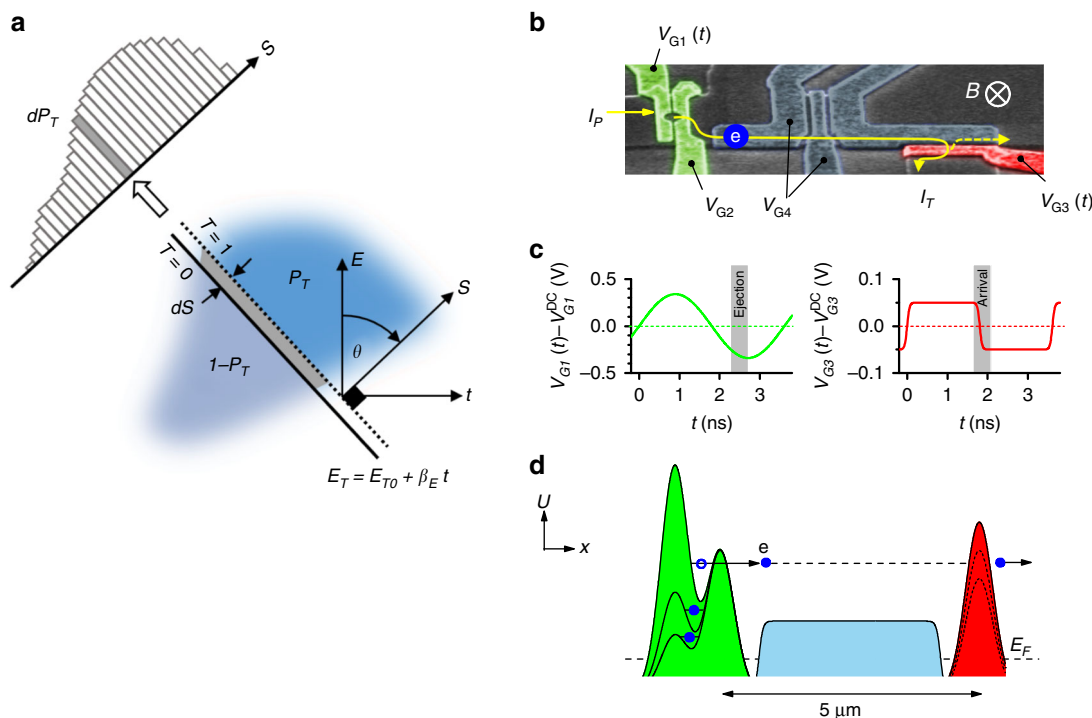


Fig. 1 Electron tomography scheme using a modulated barrier. **a** An unknown Wigner distribution $W(E, t)$ of a periodic electron source electron can be filtered using a linear-in-time threshold energy barrier set at height E_T . The transmitted and reflected part, labelled P_T and $1 - P_T$ result in a proportionate transmitted and reflected currents. A marginal projection of this distribution in the energy, time plane can be measured by fixing the ramp rate of the barrier β_E , which sets E_T , then moving the threshold boundary along the axis S in increments dS , while measuring the resulting changes in transmitted current. Repeating the experiment at different ramp rates (which sets the angle θ) gives enough information for a numerical reconstruction of the distribution. **b** False-colour scanning electron micrograph of device identical to that measured (see methods for details). The electron pump (left, highlighted green) injects pump current I_p . The barrier (right, highlighted red) selectively blocks electrons giving transmitted current $I_T \leq I_p$. The path between these is indicated with a line. The gates along the path (controlled by V_{G4}) depletes the underlying electron gas but do not block the high energy electrons. **c** Typical time-dependent control voltages for pump V_{G1} and probe barrier V_{G3} (each has a DC offset—see methods). **d** Electron potential $U(x)$ along the electron path between source and probe barrier at three representative stages for pumping (left) and blocking (right).

transmission probability changes from the change in transmitted current $\Delta P_T = \Delta I_T / I_p$.

Sinogram and tomographic reconstruction. The numerical derivative $\Delta P_T / \Delta S$ collected at different angles θ (a sinogram) is shown in Fig. 2a. Each cut represents a projection of the distribution at a different angle, as indicated in Fig. 2b–d. At $\theta = 0^\circ$ this shows the distribution along the energy axis (as in Fig. 2c) having a width of order ~ 2 meV¹⁵. At the highest angles $|\theta| \rightarrow 90^\circ$ (notwithstanding some minor bandwidth limitations, see Supplementary Note 3) this maps the time of arrival distribution (Fig. 2b) with a width of order $\sim 10^{-11}$ s³⁶. At intermediate angles, for instance at $\theta = 60^\circ$ in Fig. 2d the cut contains a mixture of energy and time information.

We use filtered back-projection²³ to compute the electronic distribution from this sinogram, as shown in Fig. 2e. This method enables reconstruction of the mixed state Wigner distribution of electrons, a combined map of electron energy and arrival time measured relative to the centre coordinates used for the collection of the sinogram data (here aligned to the mean electron energy and arrival time E_0 and t_0). As some classical fluctuations are present in our experimental implementation we interpret our results as an effective mixed state Wigner function²⁸. Our results are therefore an ensemble measurement of many pure states, with a lower phase-space density than a pure state (discussed below). We can, however, resolve a feature likely to be common to each pure state, a feature of the distribution that we show can be controlled by electron ejection conditions.

Effect of electron ejection dynamics. We observe that measured phase space distribution Fig. 2e is stretched at a certain angle in the energy–time plane, a feature derived from the sharpening of the projection at the corresponding angle in Fig. 2a. This chirp (i.e. time-varying frequency/energy) of the arriving electron energy distribution is an expected feature of electron ejection from a quantum dot under non-stationary conditions; in this kind of pump the driving barrier forces ejection by raising the dot energy with respect to the exit barrier^{29,37}. Previous experiments showed hints of energy–time correlation³⁶ but this is now directly visible in the measured distribution. Indeed, we can show that the chirp can be controlled by changing the conditions under which the electron is ejected.

The entrance barrier DC control voltage V_{G1}^{DC} influences when electrons are ejected within the pump waveform²⁷. For different values of V_{G1}^{DC} within the $I_p = ef$ plateau (see operating points in Fig. 3a) the arrival time t_0 can be adjusted over a range of more than 400 ps ($\sim 11\%$ of the total pump cycle time), as shown in Fig. 3b (circles). For our sinusoidal pump waveform, the sweep rate near the point of ejection is also tuned over a wide range (Fig. 3b squares). This can be set from a maximum rate of $|dV_{G1}/dt| \simeq 0.5$ mV/ps to ejection under almost static conditions $dV_{G1}/dt \rightarrow 0$. Reconstructions of the Wigner function at these operating points are shown in Fig. 3c. These show that the energy–time correlation is controlled by ejection speed. From fits to the data (see Supplementary Note 5) we find that energy–time trajectory $d\langle E \rangle / dt$ (see Fig. 3d) tracks the sweep rate of the pump drive barrier, with an estimated strength of the coupling between

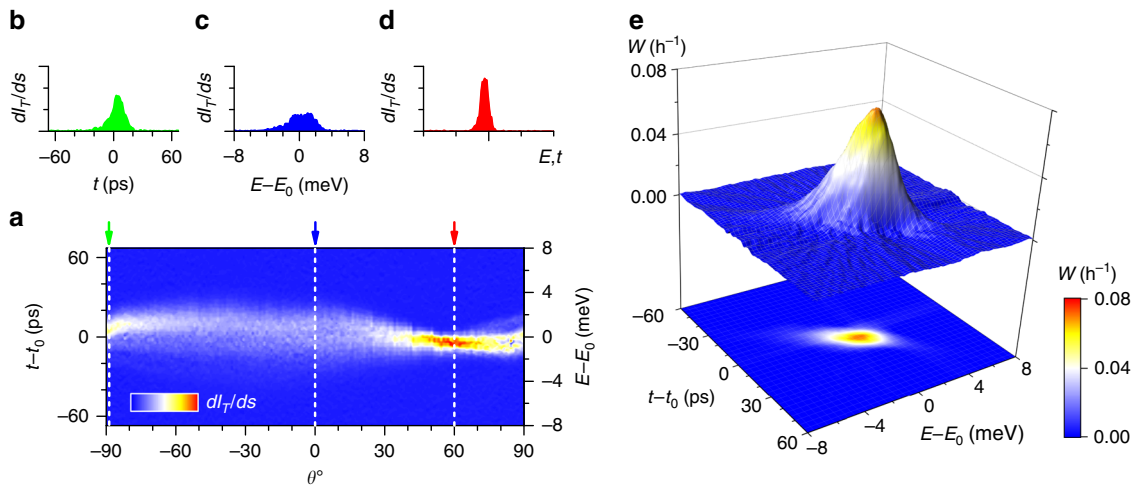


Fig. 2 Angle dependent projection of single electron density. **a** Colour plot: projected electronic density (sinogram) at various angles θ in the energy–time plane. Colour scale corresponds to dI_T/dS , where dS is an incremental step in the (normalised) energy–time plane. Depending on θ , the projection axis S corresponds to an energy projection, time projection or a mixture. The left axis is appropriate for $\theta = \pm 90^\circ$ and the right hand for $\theta = 0^\circ$. Selected projections are shown at angles, where S corresponds to **b** time projection, **c** energy projection and a mixed projection **d**. **e** Inverse Radon transform of the data in **a** giving the Wigner phase-space density in units of h^{-1} .

the pump drive barrier and the emission energy of $d\langle E \rangle / dV_{G1} \simeq 0.41$ meV/mV.

Resolution and the quantum limit. Under real experimental conditions, the measured distributions can deviate from that expected of a pure quantum state. Additional broadening is expected if the emitted state is mixed, something that can be quantified using the measured phase space maps. A conservative measure of quantum indistinguishability of our wave-packets, relevant for two particle interference experiments, is the maximal statistical weight of a pure state in the mixture¹⁸, $P_1 = \max_\psi \langle \psi | \hat{\rho} | \psi \rangle$. Values of P_1 can be obtained by numerical diagonalization of $\hat{\rho}$ or, for the range of values found here $P_1 \ll 1$, P_1 has a simple relationship to peak value of the measured phase-space density $P_1 \approx hW_{\max}$ (see Supplementary Note 6 and Supplementary Table 1 for a comparison). We find $P_1 = 0.02$ – 0.07 as plotted in Fig. 3e (solid symbols). Similarly, the purity of the effective mixed state, $\gamma = \text{Tr}(\hat{\rho}^2)$, is related to the average phase space density of the Wigner representation, $\gamma = h\langle W(E, t) \rangle = h \iint W^2(E, t) dE dt$. From the data in Fig. 3c we find $\gamma = 0.01$ – 0.04 .

Our Wigner function reconstructions may also be influenced by certain experimental limitations, for instance the energy broadening of the barrier transmission. For a monotonic detector barrier transmission function $T(E)$ going from 0 to 1 over a finite energy scale ΔE is equivalent to smoothing of the underlying $W(E, t)$ by a convolution with dT/dE along the energy axis, resulting in a smeared density distribution and reduced values of P_1 and γ ²⁸. A semiclassical model calculation³⁸ using $\Delta E = 0.8$ meV, the narrowest energy feature seen experimentally (see Supplementary Note 4), suggests a maximum measurable phase space density $hW_{\max} \lesssim 0.16$ (Fig. 3e open symbols). Our ability to rotate the source electronic distribution as in Fig. 3c enables us to further probe temporal and energy resolution limits and combine these in an estimate of our experimental resolution. A conservative estimate of the areal resolution is the product of the minimum projected energy width $\sigma_{E, \min} \simeq 0.8$ meV (under slow ejection conditions) and the minimum projected temporal width (under fast ejection conditions) $\sigma_{t, \min} \simeq 5$ ps, giving $\sigma_{E, \min} \sigma_{t, \min} \simeq 6.1\hbar$. While this is larger than the absolute minimal level of quantum uncertainty $\hbar/2$, this is an upper limit and is also clearly sufficient to resolve non-trivial properties of the excitations studied here. An estimate of the

temporal resolution limit from the maximal barrier sweep rate $\sigma'_t = \sigma_{E, \min} / (\alpha_h dV_{G3}^{AC} / dt) \simeq 0.3$ ps gives $\sigma_{E, \min} \sigma'_t \simeq 0.36\hbar$, suggesting that observation of higher purity states than that seen in this source may be possible in our scheme. How details of exact barrier geometry control this resolution limit, and the correspondence of this to the one-dimensional scattering problem²⁸ are open to further detailed study.

Discussion

The ability to tune and readout the properties of electron sources is a potentially useful tool. For instance, periodic electron sources can act as a sensitive probe of on-chip signals³⁹, with an energy–time resolution set by the electronic phase space distribution. Similar to squeezed states in photonics⁴, it should now be possible to enhance the resolution of measurements along certain phase-space trajectories. In situ Wigner function read-out will also aid the development of electron quantum optics devices where precise control of the Wigner function is required¹¹. It should also be possible to use this scheme to detect coherences via negative fringes in the Wigner function arising from interference effects^{28,38}; the characteristic oscillation period estimated from the kinetic energy of drift motion²⁶ is $\simeq 2$ ps, close to our accessible bandwidth.

In summary, we have shown a technique of generalised electron quantum tomography using numerical back-projection. Our method can reveal non-trivial emission distributions arising from internal dynamics of the quantum dot. The average and the maximal phase space density are 4 and 7% of the quantum limit, which is partly explained by finite resolution effects, but observation of a quantum-limited Wigner function should be possible.

Methods

Quantum tomography scheme. Our experimental implementation maps closely onto a model of scattering between 1-dimensional chiral edge channels under a dynamic barrier which gives Eq.(2) as a result²⁸. While a similar expression has been derived in the classical limit³⁶, this differs in microscopic approach and in the physical meaning attributed to its components (e.g. a classical joint probability distributions versus the Wigner quasiprobability). The model of ref. ²⁸ includes physical effects that we expect experimentally; modification of electron energy by the barrier itself is explicitly included, and the non-trivial geometry of the barrier edge is considered (experimentally this is not infinitely sharp). The derivation also carries through with no correction in a fully quantum mechanical treatment as we outline here.

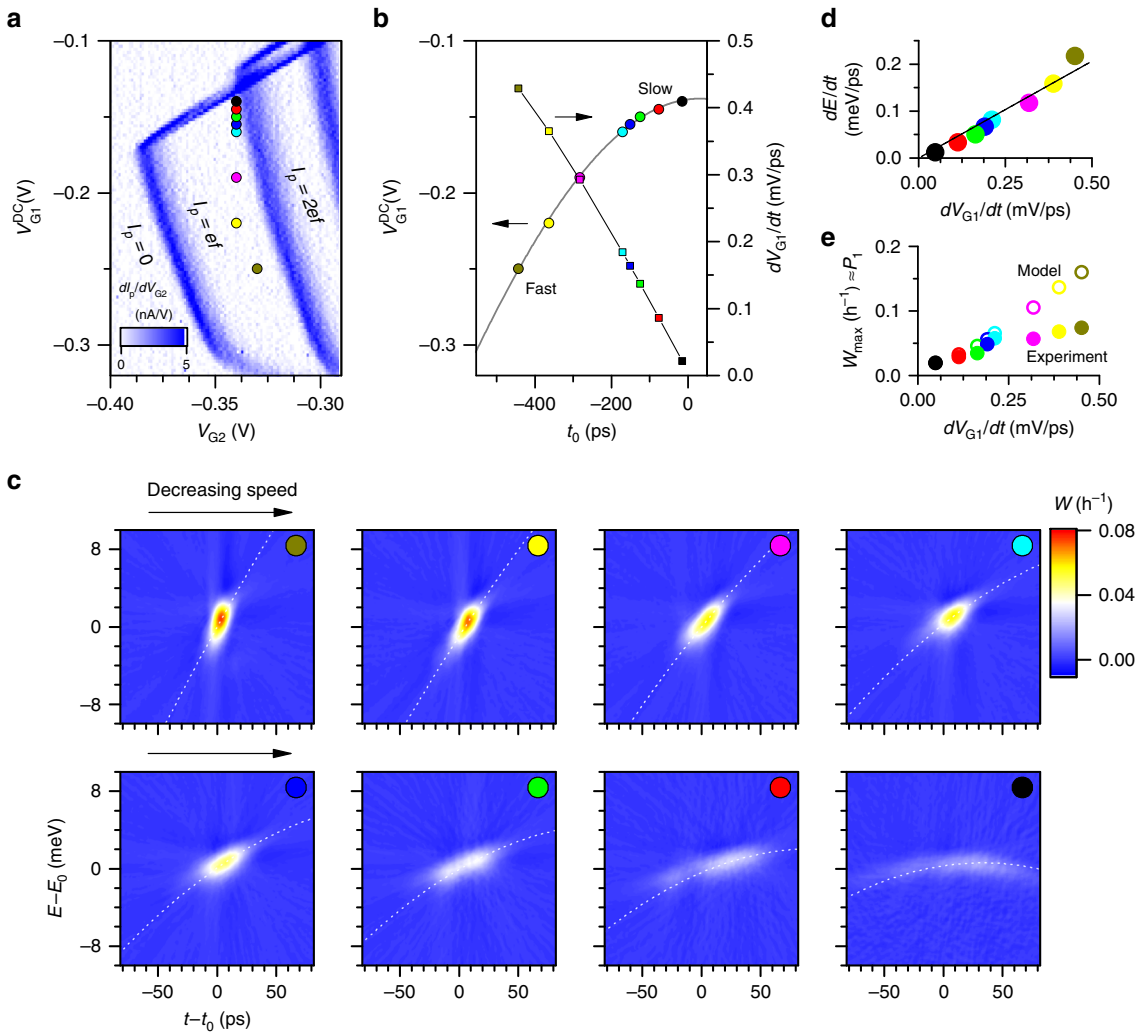


Fig. 3 Tomography of excitations produced under different ejection conditions. **a** Coloured points show different operating points within the one electron/cycle pump current plateau whose boundaries are visible in this plot of dI_p/dV_{G2} . **b** Circular symbols indicate measured time of arrival, t_0 at each of the V_{G1} operating points in **a**. Square symbols show the estimated barrier sweep rate at these times. **c** Single electron tomography for each pump operating points in **a**, as indicated by the coloured dots (top left is the fastest sweep rate, bottom right is the slowest). Dashed lines are the ejection trajectories calculated with a semiclassical model (See Supplementary Note 4 and Supplementary Figs. 5–7). **d** single electron chirp rate dE/dt as measured from fits to the backprojection at each sweep rate on the pumping gate (the solid line is a linear fit). **e** Solid symbols are the measured peak phase space density $\approx P_1$. Open symbols are from a model that accounts for energy broadening.

Central to the approach is the observation that the transmission probability in the presence of a purely linear-in-time modulated voltage is equivalent (by gauge invariance) to transmission through a static barrier of a wave-packet with an additional quadratic phase factor²⁸. One can choose a gauge, in which the electron energy is measured with respect to the transmission threshold energy, set by a barrier height. The presence of the barrier shifts the incoming energy–time distribution along the energy axis as the electrons lose momentum upon entering the gate-affected region. However, if the gate voltage (and hence the decelerating force) depends on time, then the incurred energy shift will depend on the arrival time too, thus deforming the energy–time distribution as it enters the barrier region. For the special case of linear-in-time modulation of the gate, this has a simple shift-and-skew effect on the distribution, which is then filtered at a constant threshold. This maps exactly to the selective transmission effect of Fig. 1a. It also turns out to be independent of the exact spatial profile of the gate edge potential leading into the scattering region, down to some small constant energy and time offsets that reflect the effective position of the barrier edge²⁸.

More specifically, for a static barrier, the probability of transmission is expressed quantum mechanically as

$$P_T = \int |\psi_{out}(t)|^2 dt = \iint T(E)W(E,t)dE dt, \quad (3)$$

where $T(E) = |\tau(E)|^2$ is the square of a complex scattering amplitude $\tau(E)$ that connects the incoming and the outgoing probability amplitudes, $\psi_{out}(E) = \tau(E) \psi_{in}(E)$, and $W(E,t) = h^{-1} \int \psi_{in}^*(E + \epsilon/2) \psi_{in}(E - \epsilon/2) e^{i\epsilon t/\hbar} d\epsilon$

is the Wigner function of the incoming (pure) state. A uniform energy modulation of the whole scattering region, as in the case of the time dependent barrier height, can be expressed as a global energy shift $E \rightarrow E + E_{T0} + \beta_E t$, where E_{T0} is an adjustable offset and β_E controls the ramp speed. This is equivalent to a gauge transformation $\psi(t) \rightarrow \psi(t) e^{i(E_{T0} + \beta_E t^2/2)/\hbar}$ where $\psi(t) = h^{-1/2} \int \psi(E) e^{-iEt/\hbar} dE$, which in turn leads to $W(E,t) \rightarrow W(E + E_{T0} + \beta_E t, t)$ in Eq. 3, and hence to Eq. 2.

Linear-in-time barrier sweeps (as used experimentally) should ensure that the electronic distribution after entering the time-dependent barrier region remains undistorted (down to the energy shifts described above) regardless of the spatial barrier shape (e.g. onset sharpness, overall size) $V(x,t)$. See ref. 28 for more detailed discussion of model approximations and practical constraints in the quantum limit. For discussion of the range of experimental applicability of this technique (e.g. energy range, effects of available experimental bandwidth) see Supplementary Note 7.

Device design and operation. Our device is defined by surface gates on a GaAs-based two dimensional electron gas heterostructure 90 nm below the surface²⁶. Distance between the electron pump and energy-selective barrier is $\sim 5 \mu\text{m}$, as estimated from lithographic dimensions. The device is operated in a dilution refrigerator with base temperature $\sim 100 \text{ mK}$ (with RF drive signals turned on) in a perpendicular magnetic field $B = 12 \text{ T}$. The wafer carrier density is $\sim 1.7 \times 10^{15} \text{ m}^{-2}$ with mobility $170 \text{ m}^2 \text{ V}^{-1} \text{ s}^{-1}$. This carrier density and field places the bulk filling factor $\nu < 1$, but this is of secondary importance here because of the large energy and spatial separation between our excitations and the Fermi sea, due to the high electron

energy and the depletion gate V_{G4} (see below for details). This is the same kind of device as used to measure electron velocity²⁶ and phonon emission³⁵.

DC current measurements. DC current readings are taken with commercial transimpedance amplifiers at 10^{10} V/A gain. Amplifiers are connected on the pump (I_p) and on the far side of the energy-selective barrier (I_T) as shown in Fig. 1 b. Although not used in our analysis, we also measure I_R , the reflected current with a third amplifier to confirm that the pumped current is divided between the two output terminals i.e. $I_p = I_T + I_R$ (for simplicity we consider electron current rather than conventional current). During tomography measurements, each current measurement (lasting 200 ms) corresponds to $\sim 5.5 \times 10^7$ pump cycles, while every back-projection map samples a total of 1.5×10^{12} pump cycles.

RF connections. The waveforms are synthesized using two Tektronix 70001A Arbitrary Waveform Generators (AWG) connected via a synchronisation unit to effectively give two outputs, one for the source and the other for the energy selective barrier. Both RF signal paths use low-loss cryogenic coaxial cable (beryllium copper, superconducting) inside the cryostat. Broadband (18 GHz) 3 and 1 dB attenuators are present on both lines inside the dilution refrigerator for thermalisation purposes, in addition to 3 dB at room temperature. Due to the larger amplitude requirements for the pump, this line includes a 15 dB linear amplifier (15 GHz bandwidth). Broadband bias tees (18 GHz bandwidth) are used to add DC voltages at cryogenic temperatures near the sample. A 6 GHz low-pass filter was used on the pump drive signal to prevent weak oscillations creating ejection from a non-monotonic drive signal²⁷.

Pumping. A periodic voltage $V_{G1}(t) = V_{G1}^{AC}(t) + V_{G1}^{DC}$ [Fig. 1b, left] is controlled by one AWG channel and a DC voltage source. $V_{G1}^{AC}(t)$ and V_{G1}^{DC} are the ac and dc components. The ac component modulates the G1 barrier, pumping n electrons per cycle through the device at a repetition rate $f = 277$ MHz, giving $I_p = 44.4$ pA for $n = 1$. The tunnelling processes which select the number of loaded electrons have been discussed extensively in the context of accurate current standards for metrology^{30–32}. Note that in the last panel in Fig. 3(c) the escape rate is reduced such that the electron cannot fully escape within the time permitted by the pump waveform, reducing the pump current by $\sim 8\%$.

Waveform synthesis and delay control. Both $V_{G3}(t)$ and $V_{G1}(t)$ waveforms are $N = 180$ points long, 10-bit vertical resolution and played cyclically at a frequency of $f_0 = 277$ MHz. The phase t_d of the two sources is controlled by phase-shifting their synchronisation clock. The pump drive is a sine wave, while $V_{G3}(t)$ is of the form $v_k = \tanh[A_0 \tan(\theta) \sin(2\pi f_0 t_k)]$ for each time t_k . θ is the required projection angle and A_0 linearly scales the slope. This gives a linear voltage ramp near the zero crossings, while smoothly limiting the signal away from this point (see Supplementary Fig. 3). The actual sweep rate was measured in situ³⁹ (see Supplementary Fig. 4) for different values of θ and $\beta_0 = 0.12$ meV/ps was empirically found using $\tan \theta = \beta_E / \beta_0$ (i.e. β_0 is the sweep rate at $\theta = 45^\circ$). The zero crossing of $V_{G3}(t)$ are matched to the electron arrival energy and time using the DC offset V_{G3}^{DC} and the time delay t_d . Precise alignment is possible because the waveform, including the linear ramp region, is apparent in a map of transmitted current as described previously^{15,39}. This accounts for RF cable length, the position of the ejection point in the pump waveform and the time for the electrons to traverse the device. The electron velocity measured in similar devices²⁶ is $\sim 0.5\text{--}1.5 \times 10^5$ ms⁻¹ giving an expected transit time $\sim 30\text{--}100$ ps^{13,15,26,27}.

Backprojection. Ideally, data would be collected by controlling the transmission mask via combined shifts in Δt_d and V_{G3}^{DC} (along the axis S) while using the angular control of the voltage sweep-rate to define the projection angle θ . In practice it is difficult to collect data along arbitrary axis S (because of finite resolution in voltage and time delay controls) so we measure along a convenient S' and project this onto the S axis (see Supplementary Note 2 and Supplementary Fig. 4). We use a standard procedure for the inverse Radon transform²³ with a ramp (high-pass) filter before numerical back projection (we also include a Hann low-pass filter for some noise rejection) (see Supplementary Note 2 and Supplementary Fig. 2).

Data availability

The experimental data that support the findings of this study are available in the SEQUOIA community repository at <https://zenodo.org/communities/sequoia/> at <https://doi.org/10.5281/zenodo.3533120>.

Received: 4 March 2019; Accepted: 15 October 2019;

Published online: 22 November 2019

References

1. Demkowicz-Dobrzański, R., Kołodyński, J. & Guţă, M. The elusive Heisenberg limit in quantum-enhanced metrology. *Nat. Commun.* **3**, 1063 (2012).

- Holland, M. J. & Burnett, K. Interferometric detection of optical phase shifts at the Heisenberg limit. *Phys. Rev. Lett.* **71**, 1355–1358 (1993).
- Bollinger, J. J., Itano, W. M., Wineland, D. J. & Heinzen, D. J. Optimal frequency measurements with maximally correlated states. *Phys. Rev. A* **54**, R4649–R4652 (1996).
- Bondurant, R. S. & Shapiro, J. H. Squeezed states in phase-sensing interferometers. *Phys. Rev. D* **30**, 2548–2556 (1984).
- Giovannetti, V., Lloyd, S. & Maccone, L. Advances in quantum metrology. *Nat. Photonics* **5**, 222 (2011).
- Giovannetti, V., Lloyd, S. & Maccone, L. Quantum metrology. *Phys. Rev. Lett.* **96**, 010401 (2006).
- Yurke, B. Input states for enhancement of fermion interferometer sensitivity. *Phys. Rev. Lett.* **56**, 1515 (1986).
- Ou, Z. Fundamental quantum limit in precision phase measurement. *Phys. Rev. A* **55**, 2598 (1997).
- De Martini, F., Mazzei, A., Ricci, M. & D'Ariano, G. M. Exploiting quantum parallelism of entanglement for a complete experimental quantum characterization of a single-qubit device. *Phys. Rev. A* **67**, 062307 (2003).
- D'Ariano, G. M. & Presti, P. L. Imprinting complete information about a quantum channel on its output state. *Phys. Rev. Lett.* **91**, 047902 (2003).
- Bocquillon, E. et al. Coherence and indistinguishability of single electrons emitted by independent sources. *Science* **339**, 1054–1057 (2013).
- Dubois, J. et al. Minimal-excitation states for electron quantum optics using levitons. *Nature* **502**, 659–663 (2013).
- Ubbelohde, N. et al. Partitioning of on-demand electron pairs. *Nat. Nanotechnol.* **10**, 46–49 (2014).
- Bocquillon, E. et al. Electron quantum optics: partitioning electrons one by one. *Phys. Rev. Lett.* **108**, 196803 (2012).
- Fletcher, J. D. et al. Clock-controlled emission of single-electron wave packets in a solid-state circuit. *Phys. Rev. Lett.* **111**, 216807 (2013).
- Roussely, G. et al. Unveiling the bosonic nature of an ultrashort few-electron pulse. *Nat. Commun.* **9**, 2811 (2018).
- Jullien, T. et al. Quantum tomography of an electron. *Nature* **514**, 603–607 (2014).
- Bisognin, R. et al. Quantum tomography of electrical currents. *Nat. Commun.* **10**, 3379 (2019).
- Vogel, K. & Risken, H. Determination of quasiprobability distributions in terms of probability distributions for the rotated quadrature phase. *Phys. Rev. A* **40**, 2847–2849 (1989).
- Kurtsiefer, C., Pfau, T. & Mlynek, J. Measurement of the Wigner function of an ensemble of helium atoms. *Nature* **386**, 150 (1997).
- Janicke, U. & Wilkens, M. Tomography of atom beams. *J. Mod. Opt.* **42**, 2183–2199 (1995).
- Smithy, D. T., Beck, M., Raymer, M. G. & Faridani, A. Measurement of the Wigner distribution and the density matrix of a light mode using optical homodyne tomography: application to squeezed states and the vacuum. *Phys. Rev. Lett.* **70**, 1244–1247 (1993).
- Smith, S.W. *The Scientists and Engineer's guide to Digital Signal Processing* (California Technical Publishing, 1997).
- Grenier, C. et al. Single-electron quantum tomography in quantum hall edge channels. *New J. Phys.* **13**, 093007 (2011).
- Ferraro, D. et al. Wigner function approach to single electron coherence in quantum hall edge channels. *Phys. Rev. B* **88**, 205303 (2013).
- Kataoka, M. et al. Time-of-flight measurements of single-electron wave packets in quantum hall edge states. *Phys. Rev. Lett.* **116**, 126803 (2016).
- Waldie, J. et al. Measurement and control of electron wave packets from a single-electron source. *Phys. Rev. B* **92**, 125305 (2015).
- Locane, E., Brouwer, P. W. & Kashcheyevs, V. Time-energy filtering of single electrons in ballistic waveguides. *New J. Phys.* **21**, 093042 (2019).
- Kaestner, B. et al. Single-parameter nonadiabatic quantized charge pumping. *Phys. Rev. B* **77**, 153301 (2008).
- Giblin, S. et al. Towards a quantum representation of the ampere using single electron pumps. *Nat. Commun.* **3**, 930 (2012).
- Kashcheyevs, V. & Kaestner, B. Universal decay cascade model for dynamic quantum dot initialization. *Phys. Rev. Lett.* **104**, 186805 (2010).
- Kaestner, B. & Kashcheyevs, V. Non-adiabatic quantized charge pumping with tunable-barrier quantum dots: a review of current progress. *Rep. Prog. Phys.* **78**, 103901 (2015).
- Blumenthal, M. D. et al. Gigahertz quantized charge pumping. *Nat. Phys.* **3**, 343–347 (2007).
- Fujiwara, A., Nishiguchi, K. & Ono, Y. Nanoampere charge pump by single-electron ratchet using silicon nanowire metal-oxide-semiconductor field-effect transistor. *Appl. Phys. Lett.* **92**, 042102 (2008).
- Johnson, N. et al. LO-Phonon emission rate of hot electrons from an on-demand single-electron source in a GaAs/AlGaAs heterostructure. *Phys. Rev. Lett.* **121**, 137703 (2018).
- Kataoka, M., Fletcher, J. D. & Johnson, N. Time-resolved single-electron wavepacket detection. *Phys. Status Solidi b* **254**, 1600547 (2016).

37. Leicht, C. et al. Generation of energy selective excitations in quantum hall edge states. *Semicond. Sci. Technol.* **26**, 055010 (2011).
38. Kashcheyevs, V. & Samuelsson, P. Classical-to-quantum crossover in electron on-demand emission. *Phys. Rev. B* **95**, 245424 (2017).
39. Johnson, N. et al. Ultrafast voltage sampling using single-electron wavepackets. *Appl. Phys. Lett.* **110**, 102105 (2017).

Acknowledgements

We acknowledge valuable discussions with Heung-Sun Sim. We acknowledge use of software developed by Franz Ahlers. This work was supported by the UK government's Department for Business, Energy and Industrial Strategy and partly from the Joint Research Projects 15SIB08 e-SI-Amp and 17FUN04 SEQUOIA from the European Metrology Programme for Innovation and Research (EMPIR) cofinanced by the Participating States and from the European Unions Horizon 2020 research and innovation programme. We acknowledge support by the SFB 658 of the DFG and University of Latvia grant no. AAP2016/B031.

Author contributions

J.D.F. performed the measurements and data analysis. N.J. assisted J.D.F. with the measurements. E.L., P.W.B., V.K. formulated analytical model for the transmitted current through a time-dependent barrier. P.S. fabricated the sample. J.P.G. performed e-beam patterning. I.F. and D.A.R. provided the wafer. M.K. developed the idea for a classical tomography (expanded by V.K., E.L., P.W.B. to a quantum tomography), designed the sample and led the project. All authors contributed to writing the paper.

Competing interests

The authors declare no competing interests.

Additional information

Supplementary information is available for this paper at <https://doi.org/10.1038/s41467-019-13222-1>.

Correspondence and requests for materials should be addressed to M.K.

Peer review information *Nature Communications* thanks the anonymous reviewer(s) for their contribution to the peer review of this work. Peer reviewer reports are available.

Reprints and permission information is available at <http://www.nature.com/reprints>

Publisher's note Springer Nature remains neutral with regard to jurisdictional claims in published maps and institutional affiliations.



Open Access This article is licensed under a Creative Commons Attribution 4.0 International License, which permits use, sharing, adaptation, distribution and reproduction in any medium or format, as long as you give appropriate credit to the original author(s) and the source, provide a link to the Creative Commons license, and indicate if changes were made. The images or other third party material in this article are included in the article's Creative Commons license, unless indicated otherwise in a credit line to the material. If material is not included in the article's Creative Commons license and your intended use is not permitted by statutory regulation or exceeds the permitted use, you will need to obtain permission directly from the copyright holder. To view a copy of this license, visit <http://creativecommons.org/licenses/by/4.0/>.

© The Author(s) 2019