

A Novel Porcine Model for Future Studies of Cell-enriched Fat Grafting

Bo S. Rasmussen, MD*
 Celine L. Sørensen, MD*
 Peter V. Vester-Glowinski, MD*
 Mikkel Herly, MD*
 Sorel Kurbegovic, MD†
 Mathias Ørholt, MB*
 Jesper D. Svalgaard, MSc‡
 Stig-Frederik T. Kølbe, MD, PhD*
 Annemarie T. Kristensen, DVM§
 Maj-Lis M. Talman, MD¶
 Krzysztof T. Drzewiecki, MD,
 DMSci*
 Anne Fischer-Nielsen, MD, PhD‡

Background: Cell-enriched fat grafting has shown promising results for improving graft survival, although many questions remain unanswered. A large animal model is crucial for bridging the gap between rodent studies and human trials. We present a step-by-step approach in using the Göttingen minipig as a model for future studies of cell-enriched large volume fat grafting.

Methods: Fat grafting was performed as bolus injections and structural fat grafting. Graft retention was assessed by magnetic resonance imaging after 120 days. The stromal vascular fraction (SVF) was isolated from excised fat and liposuctioned fat from different anatomical sites and analyzed. Porcine adipose-derived stem/stromal cells (ASCs) were cultured in different growth supplements, and population doubling time, maximum cell yield, expression of surface markers, and differentiation potential were investigated.

Results: Structural fat grafting in the breast and subcutaneous bolus grafting in the abdomen revealed average graft retention of 53.55% and 15.28%, respectively, which are similar to human reports. Liposuction yielded fewer SVF cells than fat excision, and abdominal fat had the most SVF cells/g fat with SVF yields similar to humans. Additionally, we demonstrated that porcine ASCs can be readily isolated and expanded in culture in allogeneic porcine platelet lysate and fetal bovine serum and that the use of 10% porcine platelet lysate or 20% fetal bovine serum resulted in population doubling time, maximum cell yield, surface marker profile, and trilineage differentiation that were comparable with humans.

Conclusions: The Göttingen minipig is a feasible and cost-effective, large animal model for future translational studies of cell-enriched fat grafting. (*Plast Reconstr Surg Glob Open* 2018;6:e1735; doi: 10.1097/GOX.0000000000001735; Published online 4 April 2018.)

From the *Department of Plastic Surgery, Breast Surgery and Burns, University Hospital of Copenhagen, Copenhagen, Denmark; †Department of Radiology, Stanford University, Stanford, Calif.; ‡Cell Therapy Facility, The Blood Bank, Department of Clinical Immunology, University Hospital of Copenhagen, Copenhagen, Denmark; §Section for Medicine, Oncology and Veterinary Clinical Pathology, Department of Veterinary Clinical Sciences, University of Copenhagen, Copenhagen, Denmark; and ¶Department of Pathology, University Hospital of Copenhagen, Copenhagen, Denmark.

Received for publication December 6, 2017; accepted February 6, 2018.

Preliminary results presented at IFATS San Diego 2016.

Supported by The Danish Cancer Society (*Kræftens Bekæmpelse*) and The Research Foundation of Rigshospitalet (*Rigshospitalets Forskningspuljer*).

Copyright © 2018 The Authors. Published by Wolters Kluwer Health, Inc. on behalf of The American Society of Plastic Surgeons. This is an open-access article distributed under the terms of the Creative Commons Attribution-Non Commercial-No Derivatives License 4.0 (CCBY-NC-ND), where it is permissible to download and share the work provided it is properly cited. The work cannot be changed in any way or used commercially without permission from the journal.

DOI: 10.1097/GOX.0000000000001735

INTRODUCTION

Autologous fat grafting has become a widely used tool in plastic surgery for tissue augmentation and for restoring volume defects.¹⁻⁵ Major differences in graft retention (10–90%) has been reported over the years,⁶⁻¹⁰ but extensive research and increasing experience with the technique has resulted in improved and more consistent graft retentions in recent reports.¹¹ Despite this, the quest for improving fat graft retention even further continues and enriching fat grafts with either stromal vascular fraction (SVF) cells¹²⁻¹⁷ or ex vivo expanded adipose-derived stromal/stem cells (ASCs)^{18,19} have shown promising results. However, many questions regarding the mechanism of action and fate of ASCs remain unclear, and the optimal concentration and most effective cellular enrichment composition are unknown. To answer these questions, an

Disclosure: The authors have no financial interest to declare in relation to the content of this article. The Article Processing Charge was paid for by The Danish Cancer Society.

Supplemental digital content is available for this article. Clickable URL citations appear in the text.

animal model with fat volume and composition similar to humans is needed.

Most previous animal studies have used xenogeneic models with human cells and fat tissue grafted in very small volumes into immune-deficient rodents,^{20,21} which is far from the clinical setting. Therefore, an intermediate large animal model with superior comparability to humans and the option of studying larger volumes of fat grafts is imperative.

No such model currently exists, and therefore, we decided to investigate and validate the Göttingen minipig for future studies of cell-enriched fat grafting due to the similarities between these pigs and humans in terms of anatomy and pathophysiology.^{22,23} Regarding the scope of fat grafting, an important factor is that Göttingen minipigs build up a thick subcutaneous fat layer when fed to obesity, which is essential for performing standard large-volume liposuction. Additionally, obese Göttingen minipigs weigh no more than 60–70 kg, which allows for handling during surgery and magnetic resonance imaging (MRI). Finally, these minipigs are widely used experimental animals in other fields of research.^{24,25}

The primary aim of this study was to investigate the efficacy and translatability of the Göttingen minipig as an animal model for future studies of autologous cell-enriched fat grafting of larger volumes. We therefore performed feasibility studies of both the *in vitro* and *in vivo* aspects of the technique and compared the obtained data with existing human data on ASC expansion and autologous fat grafting. We investigated:

- 1) SVF isolation from excised fat versus liposuction from different anatomical sites;
- 2) large volume liposuction and conventional fat grafting (nonenriched) via both bolus injection and structural fat grafting;
- 3) fat graft retention assessed by MRI at day 120;
- 4) ASC cultures with different growth supplements [fetal bovine serum (FBS), pooled porcine platelet lysate (pPPL), pooled human platelet lysate (pHPL), and porcine serum (PS)] with respect to population doubling time (PDT), maximum cell yield, expression of surface markers, and differentiation potential; and
- 5) the feasibility of ASC expansion for large-volume cell-enriched fat grafting.

MATERIALS AND METHODS

Animals

Adult female Göttingen minipigs weighing approximately 70 kg were used in accordance with The Danish Animal Experiments Inspectorate, permission 2015-15-0201-00681.

Harvesting of Fat for SVF Isolation: Techniques and Anatomical Sites

To identify the effect of different harvesting techniques and different donor sites on SVF yield, we per-

formed syringe-aspiration and surgical excision of adipose tissue from the neck, back, and abdomen. Fifty milliliters of lipoaspirate and 20 grams of excised fat were harvested from all 3 donor sites, and the SVF yield was determined by cell counting.

Large Volume Liposuction and Fat Grafting

A GID-700 canister was used for collecting and washing the lipoaspirate. Tumescence solution was installed before suction-assisted liposuction, which was performed with a pressure no lower than -0.6 bar. The temperature in the canister was kept above 30°C to prevent solidification of the lipoaspirate. Fat grafting was performed with either a subcutaneous bolus injection of 30 mL lipoaspirate injected on the abdomen of the animal (n = 4) or via a structural fat grafting technique using a fat graft of 150–185 mL injected into the pig's breast (n = 4).

Magnetic Resonance Imaging

Volume retention of the bolus fat grafts was calculated as described previously²⁶ directly after grafting and again after 120 days. A region of interest (ROI) was drawn around the bolus graft on all slices (Fig. 1). ROIs were then multiplied by slice thickness and summed to determine the overall graft volume.

Volume retention of the porcine breast was measured as described previously.²⁷ First, the cranial/caudal and lateral/medial border of the breast were outlined on the image acquired directly after grafting. The cranial/caudal borders were translated to a fixed distance from the nipple of the grafted breast, and the lateral border was translated into a fixed distance from the midline. The distances from these fixed pointers were noted and used on the subsequent scan after 120 days (Fig. 2).

Isolation and Culture of ASCs

The tissues were incubated with collagenase type 4 at 37°C with constant rotation for 90 minutes before neutralizing with culture medium (CM) consisting of Dulbecco's modified Eagle's medium, 1% penicillin-streptomycin, and 10% FBS. The suspension was filtered (100- μ m filter) and centrifuged at 1,200 g for 10 minutes. The pellet was resuspended in CM and seeded in 75 cm² culture flasks with 10,000 cells/cm². Cells were cultured at 37°C in an atmosphere of 5% carbon dioxide and humidified air. The CM was changed every 3–4 days. At confluence, cells were passaged using TrypLE Select 1X for 20 minutes at 37°C, neutralized with CM, and centrifuged at 300 g for 6 minutes. The pellet was resuspended and reseeded.

Culture Expansion of ASCs for Large-volume Fat Grafting

Up to 350 mL of lipoaspirate was incubated with collagenase at 37°C for 90 minutes while shaken at 140 rpm. The suspension was neutralized with CM, filtered (200- μ m filter) and centrifuged at 1,200 g for 10 minutes. The pellet was resuspended in CM, and cells were seeded in one 6,320 cm² 10-layer Cell Factory at densities of 20,000–40,000 cells/cm². The CM, which contained 20% FBS, was changed only once on day 6, and at 90–100% confluence

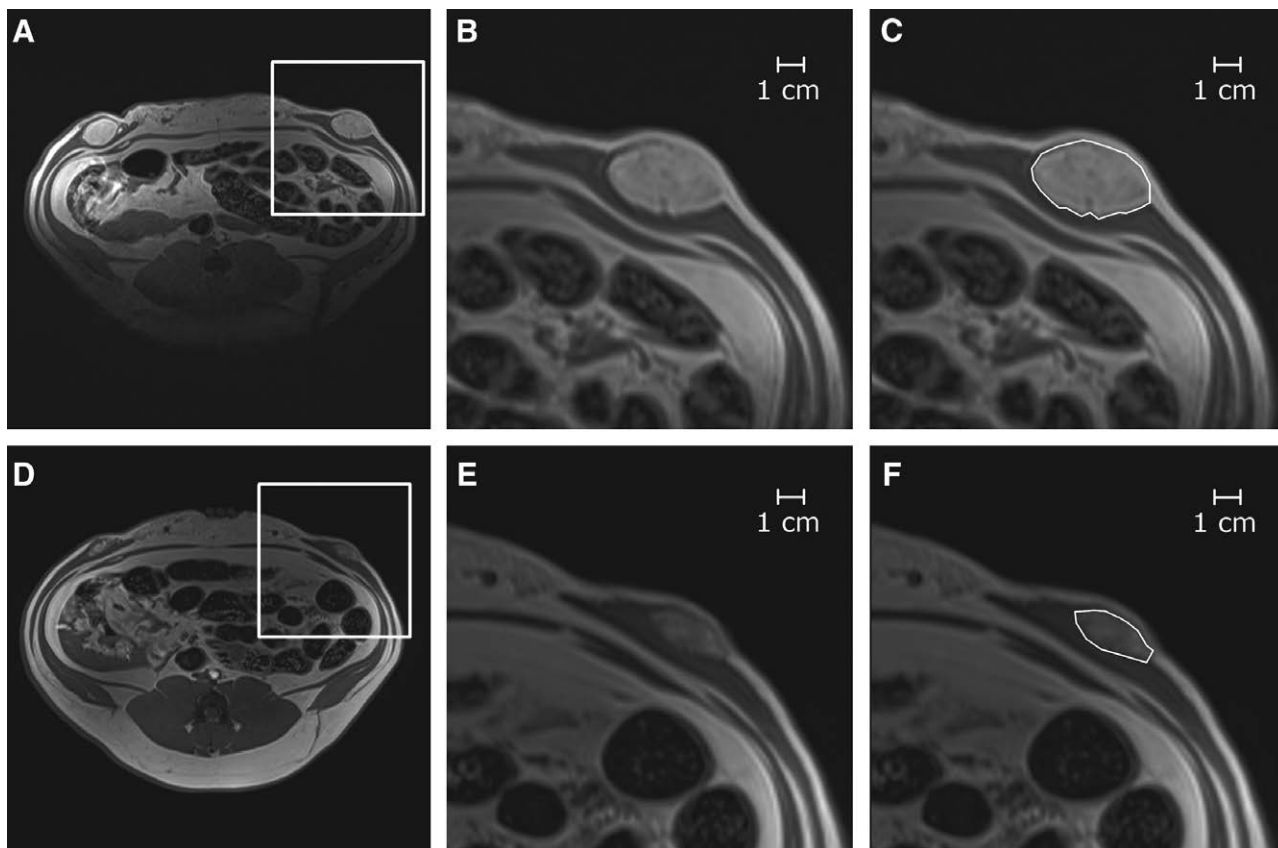


Fig. 1. MR images and delineation of the ROI (subcutaneously implanted bolus fat graft). A, Immediate postgrafting MR images. D, The same areas on day 120. The inset images (B, C, E and F) show the graft areas magnified with and without delineation for reference. MR, magnetic resonance.

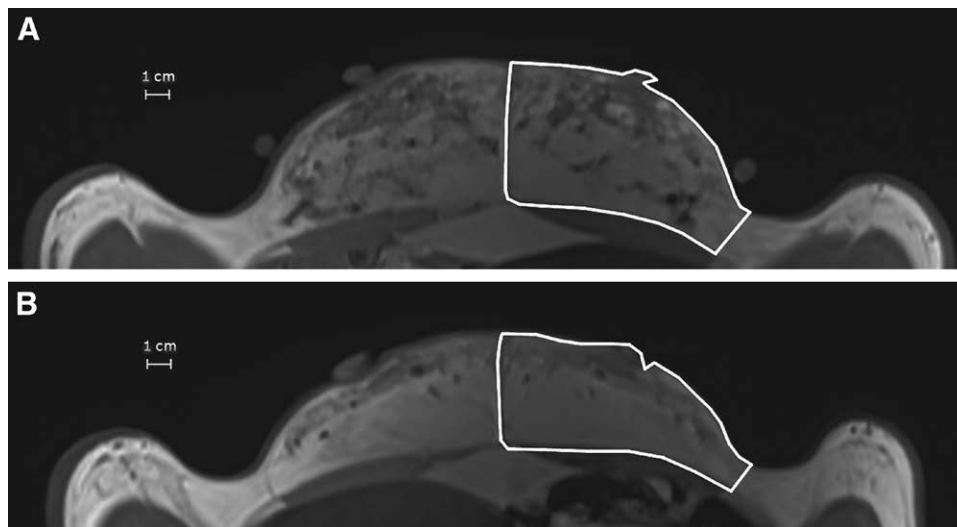


Fig. 2. MR images with delineation of the ROI (large-volume structural fat graft in the breast area of the pig). This example pig received bilateral structural fat grafting. A, Immediate postgrafting MR images. B, The same areas on day 120. Note the nipple, which serves as a reference point for setting the cranial/caudal borders. MR, magnetic resonance.

(day 14), the cells were passaged and reseeded in three 8,216cm² 13-layer Cell Factory's at densities of 20,000–30,000 cells/cm² without changing the CM (according to unpublished data) for 1 additional week.

Production of Pooled Human Platelet Lysate

pHPL was produced as described previously^{18,28} by using otherwise discarded outdated platelet concentrates initially intended for human use.

Production of Pooled Porcine Platelet Lysate

Blood from exsanguinated slaughter pigs was collected and separated by centrifugation and leukocyte depletion filtration before a freeze/thaw cycle for the lysis and release of growth factors. pPPL was pooled and sterile filtered before storing at -80°C .

Proliferation Assay

ASCs were isolated and cultured 2 passages in CM supplemented with 1 of 5 growth supplements: 10% FBS, 20% FBS, 10% pPPL, 10% pHPL, or 10% PS. Cells were seeded in 25 cm^2 flasks with $5,000\text{ cells/cm}^2$, and the CM was changed every fourth day. One flask from all cell lines was collected and counted in technical triplicates every other day.

The yields were plotted with time on a linear x axis and cell densities on a base 10 logarithmic y axis. Semi-logarithmic fit lines were fitted to the linear growth phase (ie, the log phase) by means of the least-squares methods.

The PDT was calculated using the formula: $\text{PDT} = (t_2 - t_1) \cdot \log(2) / (\log(\text{final cell density at } t_2) - \log(\text{initial cell density at } t_1))$, where t_1 is the beginning of the log phase, and t_2 is the end of the log phase as defined by the fit lines.

Trilineage Differentiation

ASCs were cultured to passage 5 in CM containing 10% FBS, 20% FBS, 10% pHPL, 10% pPPL, or 10% PS and then induced to trilineage differentiation using a STEMPRO Differentiation Kit. Cells were cultured for 14 or 21 days before staining for adipogenic, osteogenic, and chondrogenic differentiation.

Flow Cytometry

ASCs cultured with each of the 5 different growth supplements were phenotypically characterized using flow cytometry with anti-CD44, anti-CD90, anti-CD105, and anti-CD45 antibodies. Fluorescence minus one staining served as controls.

Statistical Analysis

Statistical analysis was performed using SAS Enterprise Guide 7.1, and graphs were generated in Prism 7. A 2-way analysis of variance (ANOVA) was used for comparing differences in SVF cell yields between different harvest techniques and donor sites with Tukey's multiple comparisons test used for post hoc analysis. To compare the total cell yield in the proliferation assay and differences in the PDTs, 1-way ANOVA was performed with Bonferroni-adjusted P values. The normal distribution of all groups was assessed by the Shapiro-Wilk test, and a 2-sided P value of < 0.05 was considered statistically significant. All data are presented as the mean \pm SD.

RESULTS

Harvest Techniques and Donor Sites

The SVF cell yield obtained by surgical excision was significantly higher than that obtained by liposuction in all 3 donor sites ($P \leq 0.026$). In addition, the number of SVF cells obtained by liposuction from the abdomen was significantly higher than that obtained from the back ($P = 0.043$), as shown in Figure 3. For histological features of the 3 donor sites, see **Supplemental Digital Content 1** (see figure, Supplemental Digital Content 1, which dis-

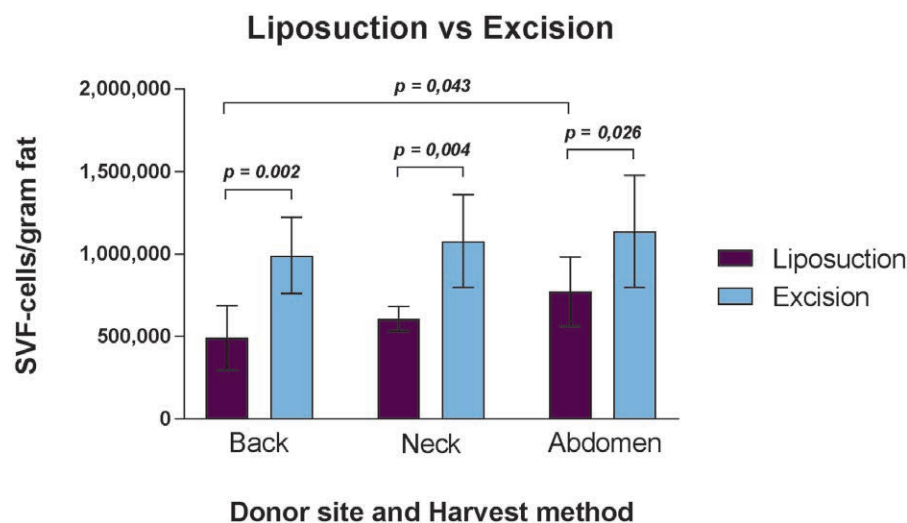


Fig. 3. The mean SVF cells/g fat obtained by syringe liposuction from the back, neck, and abdomen regions were $4.92 \times 10^5 \pm 1.96 \times 10^5$, $6.08 \times 10^5 \pm 0.75 \times 10^5$, and $7.72 \times 10^5 \pm 2.10 \times 10^5$ SVF cells/g fat, respectively, and those obtained by surgical excision were $9.93 \times 10^5 \pm 2.32 \times 10^5$, $10.8 \times 10^5 \pm 2.82 \times 10^5$, and $11.4 \times 10^5 \pm 3.40 \times 10^5$ SVF cells/g fat, respectively ($n = 4$). In contrast, as shown in Table 1, suction-assisted liposuction from the abdomen in larger volumes yielded a mean of 9.95×10^5 SVF cells/g fat. This difference could be explained by the different harvesting techniques, but most likely because the pigs undergoing syringe liposuction were exsanguinated before the procedure, and thus, a smaller amount of blood cells were mixed with the lipoaspirate, that is, in the SVF.

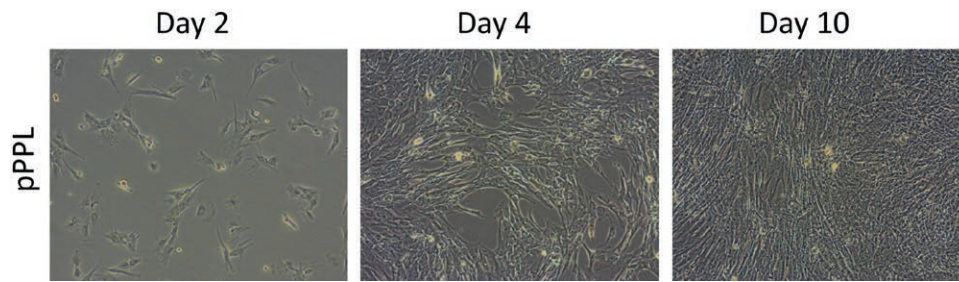


Fig. 4. ASC morphology in pPPL cultured cells. Populations of plastic adherent, ASCs occurred from both lipoaspirate and excised adipose tissue with an elongated, spindle shaped appearance. After passage and reseeding with 5,000 cells/cm², confluency was reached after 5–7 days with the use of 10% pPPL. These ASCs also had the ability to become “overconfluent” before reaching replicative senescence. Magnification: 10× original magnification. For full figure of the ASC morphology, see **Supplemental Digital Content 3**.

plays histological features of the different donor sites, <http://links.lww.com/PRSGO/A741>).

Fat Grafting and Volume Retention Calculated from MRI

MRI revealed that the initial volume of the 4 bolus grafts was 30.22±0.78 mL, corresponding well to the injected volumes. On day 120, the average residual volume was 4.61±0.96 mL, demonstrating graft retention of 15.28±3.31% of the initial volume.

The average retention of the 4 structural fat grafts was 53.55±1.95% (Figs. 1, 2).

For histology of the different fat grafts before and 120 days after grafting see **Supplemental Digital Content 2** (see figure, Supplemental Digital Content 2, which displays histology of the fat grafts before and 120 days after grafting, <http://links.lww.com/PRSGO/A742>).

Isolation and Culture of ASCs

ASCs cultured in pPPL, 10% FBS, and 20% FBS appeared elongated and spindle shaped and reached complete confluence without losing their plastic adherent properties as seen in Figure 4. ASCs cultured with PS initially displayed the same appearance but turned into large spheres with low adherence, whereas ASCs cultured in pHPL were smaller, less elongated, more pellucid, and less adherent to the plastic surface. See full figure of the cell morphology in Supplemental Digital Content 3 (see figure, Supplemental Digital Content 3, which displays full figure of the cell morphology, <http://links.lww.com/PRSGO/A743>).

Large-volume Culture Expansion

The average amount of fat used in large-volume SVF isolation was 260 g, but 1,000–1,500 g could be easily obtained by liposuction. The average yield of isolated SVF was $9.95 \times 10^5 \pm 3.14 \times 10^5$ SVF-cells/g fat. Subsequent culture expansion for 3 weeks resulted in an average of $1.63 \times 10^9 \pm 0.32 \times 10^9$ total ASCs per sample, equivalent to an increase by more than 1,600 times. Details are given in Table 1.

Trilineage Differentiation Assay

All ASCs could differentiate into adipocytes, chondrocytes, and osteocytes regardless of the growth supplement used for culture as seen in Figure 5 and the full figure of trilineage differentiation (see figure, Supplemental Digital Content 4, which displays full figure of trilineage differentiation, <http://links.lww.com/PRSGO/A744>).

Flow Cytometry

ASCs cultured in 10% FBS, 20% FBS, pPPL, and PS were positive for CD44, CD90, and CD105, although cells cultured in 10% PS appeared to have a slightly lower expression of CD44. In contrast, ASCs cultured in pHPL were negative for CD105 and exhibited reduced expression of CD90 and CD44. All cells were negative for CD45 regardless of the CM used (see figure, Supplemental Digital Content 5, which displays Figure of the phenotypic analysis by flow cytometry, <http://links.lww.com/PRSGO/A745>).

Proliferation Assay

All cells showed an initial lag phase of growth for approximately 2 days. For the ASCs cultured in 20% FBS,

Table 1. Data for ASC Culture Expansion in 6 Minipigs

| Pig | Fat (g) | SVF Cells/g Fat | Viability (%) | Seeding SVF/cm ² | Harvested P0 ASCs | Seeding P1/cm ² | Harvested P1 ASCs |
|----------|-----------|---|---------------|--|---|--|---|
| 1 | 190 | 9.21×10^5 | 67 | 2.8×10^4 | 7.62×10^8 | 3.0×10^4 | 1.50×10^9 |
| 2 | 300 | 13.30×10^5 | 88 | 3.7×10^4 | 8.23×10^8 | 3.3×10^4 | 1.26×10^9 |
| 3 | 250 | 9.87×10^5 | 76 | 3.9×10^4 | 8.76×10^8 | 3.0×10^4 | 2.16×10^9 |
| 4 | 200 | 13.97×10^5 | 69 | 4.4×10^4 | 7.88×10^8 | 3.2×10^4 | 1.72×10^9 |
| 5 | 230 | 6.57×10^5 | 69 | 2.3×10^4 | 5.13×10^8 | 2.1×10^4 | 1.38×10^9 |
| 6 | 390 | 6.82×10^5 | 71 | 2.1×10^4 | 5.32×10^8 | 2.2×10^4 | 1.77×10^9 |
| Mean; SD | 260; 74.8 | 9.95×10^5 ; 3.14×10^5 | 73; 7.82 | 3.2×10^4 ; 0.94×10^4 | 7.16×10^8 ; 1.55×10^8 | 2.8×10^4 ; 0.53×10^4 | 1.63×10^9 ; 0.32×10^9 |

SVF was harvested by suction-assisted liposuction and cultured for 14 days before reseeding and culturing for an additional week. Growth supplement used: 20% FBS. P0, passage zero; P1, passage one.

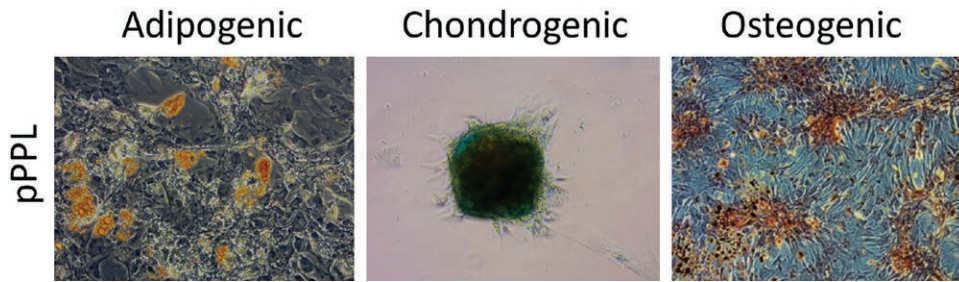


Fig. 5. Differentiation capacity of porcine ASCs. Cells were expanded in culture with 5 different growth supplements before trilineage differentiation was induced. Oil red O, Alcian Blue, and Alizarin red S staining were used to visualize lipid vacuoles, proteoglycans and calcium complexes, respectively. Here only ASCs cultured in pPPL are shown. For the full figure, see **Supplemental Digital Content 4**. Adipogenic differentiation: 20× original magnification. Chondrogenic and osteogenic differentiation: 10× original magnification.

pPPL, and pHPL, the lag phase was followed by a short log phase of growth for 4–5 days before reaching a plateau around days 6–8. The ASCs cultured in 10% FBS and PS showed a longer log phase of growth for approximately 8–10 days before reaching a plateau around days 10–14. There was no significant difference in PDT between ASCs cultured in 20% FBS, pPPL, or pHPL, but the PDTs were significantly shorter compared with ASCs cultured in 10% FBS and PS ($P < 0.05$; Fig. 6).

During the plateau phase (approximately days 16–28), ASCs cultured in 20% FBS exhibited the highest maximum yield of $17.7 \times 10^4 \pm 0.94 \times 10^4$ ASCs/cm², corresponding to approximately 340% more ASCs than those grown in PS. There was also a 250% increase in ASCs grown in 20% FBS compared with those grown in 10% FBS (Fig. 7).

DISCUSSION

Porcine ASCs have previously been isolated and characterized from excised fat tissue.^{29–31} However, contrary to previous animal studies where graft volumes have seldom exceeded 1 mL,^{20,21} the development of a translational model for clinically relevant fat grafting of larger volumes requires the use of lipoaspirate instead of excised fat.

No previous studies have reported isolation of porcine ASCs from large-volume lipoaspirates. We were able to extract 1,000–1,500 mL of lipoaspirate with little effort and no surgical complications.

In large-volume SVF isolations acquired by suction-assisted liposuction, we demonstrated an average yield of $9.95 \times 10^5 \pm 3.14 \times 10^5$ live SVF cells/g adipose tissue. This amount of SVF cells correlates to results from human studies in which the average SVF yield has been reported to range from 7.19×10^5 to 9.55×10^5 live cells/g adipose tissue.^{32–34} In addition, similar to previous human studies, we demonstrated a significantly higher SVF yield from adipose tissue harvested by surgical excision compared with liposuction,^{35–37} and a higher density of SVF cells in the lipoaspirate from the abdomen compared with the back.^{35,38,39}

To our knowledge, this is also the first report of structural fat grafting into the breast area of Göttingen minipigs. This specific recipient site and technique of structural fat graft injection were chosen to mimic the gold standard

of clinical fat grafting in humans. After 120 days, we found a mean residual volume of 53.55%, which is comparable with humans where residual volumes of 38.1–54% have been reported in prospective, controlled clinical studies with no preconditioning of the recipient site.^{12,13,17,27,40,41} We also investigated subcutaneous bolus injections of 30-mL fat grafts and found an average residual volume of 15.28% similar to the 16.3% reported in the only previous human study that employed this technique.¹⁸

For large-volume ASC-enriched fat grafting to be feasible in a clinical setting, it is imperative to obtain a sufficient number of cells within an acceptable timeframe. Additionally, regarding translational tissue, PDTs similar to human studies may hold promising biological significance. Because studies of human ASCs have repeatedly identified human platelet lysates as superior to FBS for ensuring fast and reproducible culture expansion and because animal-based growth supplements are associated with the risk of xeno-immunization and transmission of animal pathogens,^{42–48} we tested both FBS, pHPL, and allogeneic alternatives, that is, pPPL and PS.

Porcine ASCs have previously been cultured in autologous porcine platelet lysate,⁴⁹ which cannot be produced in the quantities needed for large-volume culture expansion. We present for the first time a feasible and cost-effective method to produce allogeneic pPPL. Minipigs and domestic pigs are considered the same species, and therefore, the blood from both animals can be used to produce pPPL. This is advantageous, as large quantities of blood can be collected from slaughter pigs and used to culture ASCs from minipigs. Pigs and humans have similar platelet counts in the range of $150\text{--}500 \times 10^9/1^{50,51}$; however, porcine platelets are smaller, why the centrifugation force and time for production of Platelet Rich Plasma are different, in addition to leucocyte filtration. We found that pPPL provided the shortest PDT (26.48 hours) and was correlated with culture expansion of human ASCs, for which the use of pHPL also conferred shorter PDTs compared with FBS.^{42,43,52,53} Additionally, the total pPPL cell density of 1.21×10^5 at the plateau was comparable with studies of human ASCs in which cell densities at the plateau phase were reported in the range of 1.50×10^5 ASC/cm² with the use of 10% pHPL.^{26,42} However, FBS remains the standard

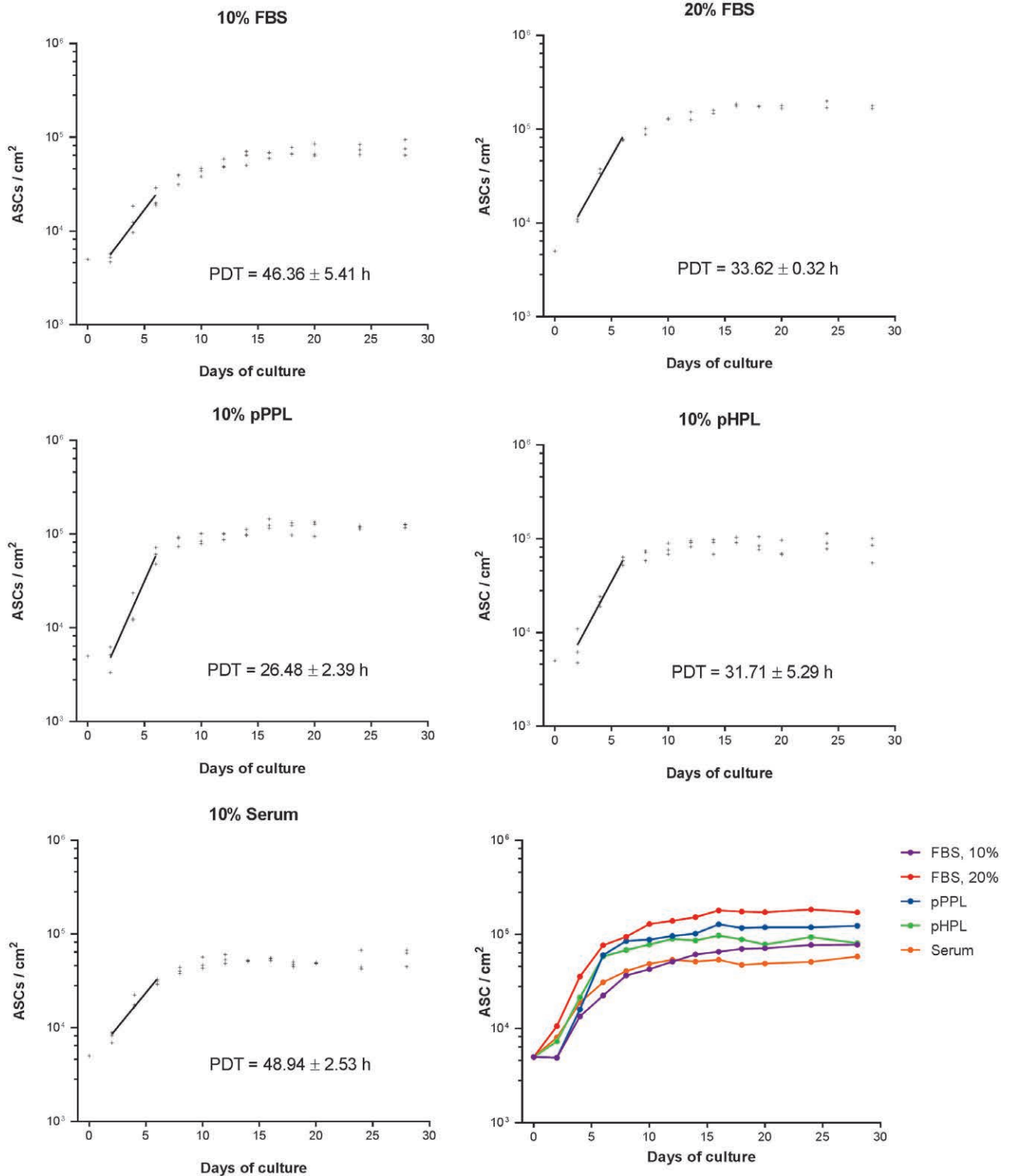


Fig. 6. Growth curves of ASCs cultured in different growth supplements (n = 3). The fit lines were calculated with the following formula: $y = 10^{ax+b}$ (where a is the slope, and b is the intercept), with $x = (\log_{10}[y] - b) / a$. Lower right: The mean cell density of all growth supplements over time.

growth supplement for culturing ASCs in animal studies, and growth rates and cell densities comparable with those from 10% pPPL could be achieved with the use of 20% FBS, as shown in Figures 6, 7. The differentiation potential

and surface marker profiles for culture in pPPL and 20% FBS were not significantly different, indicating that they are equally translatable to human data. Additionally, 20% FBS produced the highest total cell density at the plateau

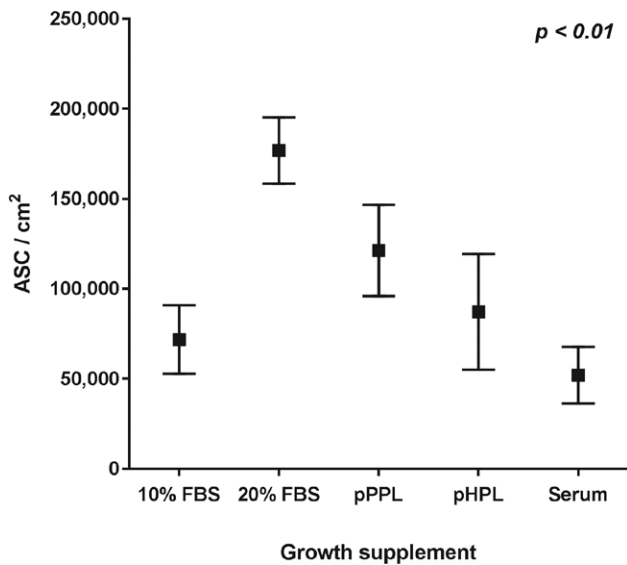


Fig. 7. Mean cell densities are shown for the ASCs during the plateau phase (n = 3). Significant differences were found among all groups when multiple comparisons were performed (1-way ANOVA). The highest Bonferroni-adjusted *P* value is shown. 10% FBS = $7.19 \times 10^4 \pm 0.97 \times 10^4$ ASC/cm², 20% FBS = $17.70 \times 10^4 \pm 0.94 \times 10^4$ ASC/cm², pPPL = $12.10 \times 10^4 \pm 1.29 \times 10^4$ ASC/cm², pHPL = $8.72 \times 10^4 \pm 1.63 \times 10^4$ ASC/cm², and PS = $5.20 \times 10^4 \pm 0.80 \times 10^4$ ASC/cm².

phase with 1.77×10^5 ASC/cm², which can be advantageous if large-volume ASC expansion is needed. Moreover, FBS is readily obtainable from commercial suppliers.

Porcine ASCs have previously been characterized,^{29,54,55} and in particular, Casado et al.³⁰ reported their characterization including mesenchymal stem cell markers (CD29, CD44, CD45, CD90, and CD105), histocompatibility molecules (SLA-I and SLA-II), and cell adhesion molecules (CD11a, CD11b, CD18, and CD61), revealing that porcine ASCs are similar to human ASCs. In the present study, we show that cells isolated and expanded in culture had CD44+, CD90+, CD105+, and CD45- phenotypes when cultured in allogeneic serum/platelet lysate or FBS. In contrast, cells cultured in the xenogeneic pHPL showed a marked reduction in the surface expression of CD44 and CD90 and were negative for CD105, indicating possible alteration of the cells. Nonetheless, we found that the porcine ASCs were able to differentiate into adipogenic, chondrogenic, and osteogenic lineages regardless of the growth supplement used for expansion.

To summarize the *in vitro* studies, we found that porcine ASCs cultured in either 10% pPPL or 20% FBS demonstrated morphologies, growth patterns, PDTs, maximum cell densities, surface markers, and differentiation capacities that were comparable with human ASCs cultured in pHPL.

CONCLUSIONS

In this study, we have presented a novel large-animal model tailored to investigate cell-enriched fat grafting in clinically relevant volumes, using the Göttingen minipig. We highlight the many similarities between the minipig model and humans in terms of the fat harvest technique, donor sites, SVF cell

yield, fat graft retention rates measured with MRI, ASC proliferation capacities, surface marker profiles, and differentiation capabilities. We have proven that the Göttingen minipig is a feasible large-animal model suitable as a solid alternative for future studies of cell-enriched fat grafting of larger volumes. The Göttingen minipig may thus be used to bridge the gap between rodent models and humans to accelerate the translation of stem cell technology to clinical practice.

Bo S. Rasmussen, MD

Department of Plastic Surgery, Breast Surgery and Burns
University Hospital of Copenhagen
Rigshospitalet Blegdamsvej 9
Section 2102
DK 2100 Copenhagen
E-mail: bosonnich@gmail.com

ACKNOWLEDGMENT

The authors thank the staff at the Department of Experimental Medicine, Panum Institute, University of Copenhagen for professional and dedicated assistance with the minipigs during the study period.

REFERENCES

- Zielins ER, Brett EA, Longaker MT, et al. Autologous fat grafting: the science behind the surgery. *Aesthet Surg J.* 2016;36:488–496.
- Coleman SR. Structural fat grafts: the ideal filler? *Clin Plast Surg.* 2001;28:111–119.
- Kanchwala SK, Holloway L, Bucky LP. Reliable soft tissue augmentation: a clinical comparison of injectable soft-tissue fillers for facial-volume augmentation. *Ann Plast Surg.* 2005;55:30–35; discussion 35.
- Khouri R, Del Vecchio D. Breast reconstruction and augmentation using pre-expansion and autologous fat transplantation. *Clin Plast Surg.* 2009;36:269–80, viii.
- Khouri RK, Smit JM, Cardoso E, et al. Percutaneous aponeurotomy and lipofilling: a regenerative alternative to flap reconstruction? *Plast Reconstr Surg.* 2013;132:1280–1290.
- Delay E, Garson S, Tousson G, et al. Fat injection to the breast: technique, results, and indications based on 880 procedures over 10 years. *Aesthet Surg J.* 2009;29:360–376.
- Wang L, Luo X, Lu Y, et al. Is the resorption of grafted fat reduced in cell-assisted lipotransfer for breast augmentation? *Ann Plast Surg.* 2015;75:128–134.
- Herold C, Ueberreiter K, Busche MN, et al. Autologous fat transplantation: volumetric tools for estimation of volume survival. A systematic review. *Aesthetic Plast Surg.* 2013;37:380–387.
- Ross RJ, Shayan R, Mutimer KL, et al. Autologous fat grafting: current state of the art and critical review. *Ann Plast Surg.* 2014;73:352–357.
- Wetterau M, Szpalski C, Hazen A, et al. Autologous fat grafting and facial reconstruction. *J Craniofac Surg.* 2012;23:315–318.
- Khouri RK Jr, Khouri RK. Current clinical applications of fat grafting. *Plast Reconstr Surg.* 2017;140:466–86.
- Gentile P, Orlandi A, Sciola MG, et al. A comparative translational study: the combined use of enhanced stromal vascular fraction and platelet-rich plasma improves fat grafting maintenance in breast reconstruction. *Stem Cells Transl Med.* 2012;1:341–351.
- Gentile P, Sciola MG, Orlandi A, et al. Breast reconstruction with enhanced stromal vascular fraction fat grafting: what is the best method? *Plast Reconstr Surg Glob Open.* 2015;3:e406.
- Yoshimura K, Sato K, Aoi N, et al. Cell-assisted lipotransfer for cosmetic breast augmentation: supportive use of adipose-derived stem/stromal cells. *Aesthetic Plast Surg.* 2008;32:48–55; discussion 56.

15. Yoshimura K, Suga H, Eto H. Adipose-derived stem/progenitor cells: roles in adipose tissue remodeling and potential use for soft tissue augmentation. *Regen Med.* 2009;4:265–273.
16. Dos Anjos S, Matas-Palau A, Mercader J, et al. Reproducible volume restoration and efficient long-term volume retention after point-of-care standardized cell-enhanced fat grafting in breast surgery. *Plast Reconstr Surg Glob Open.* 2015;3:e547.
17. Tissiani LA, Alonso N. A prospective and controlled clinical trial on stromal vascular fraction enriched fat grafts in secondary breast reconstruction. *Stem Cells Int.* 2016;2016:2636454.
18. Kølle SF, Fischer-Nielsen A, Mathiasen AB, et al. Enrichment of autologous fat grafts with ex-vivo expanded adipose tissue-derived stem cells for graft survival: a randomised placebo-controlled trial. *Lancet.* 2013;382:1113–1120.
19. Koh KS, Oh TS, Kim H, et al. Clinical application of human adipose tissue-derived mesenchymal stem cells in progressive hemifacial atrophy (Parry-Romberg disease) with microfat grafting techniques using 3-dimensional computed tomography and 3-dimensional camera. *Ann Plast Surg.* 2012;69:331–337.
20. Rasmussen BS, Lykke Sørensen C, Vester-Glowinski PV, et al. Effect, feasibility, and clinical relevance of cell enrichment in large volume fat grafting: a systematic review. *Aesthet Surg J.* 2017;37:S46–S58.
21. Toyserkani NM, Quaade ML, Sørensen JA. Cell-assisted lipotransfer: a systematic review of its efficacy. *Aesthetic Plast Surg.* 2016;40:309–318.
22. Casal M, Haskins M. Large animal models and gene therapy. *Eur J Hum Genet.* 2006;14:266–272.
23. Larsen MO, Rolin B. Use of the Göttingen minipig as a model of diabetes, with special focus on type 1 diabetes research. *ILAR J.* 2004;45:303–313.
24. Harding J, Roberts RM, Mirochnitchenko O. Large animal models for stem cell therapy. *Stem Cell Res Ther.* 2013;4:23.
25. Rubessa M, Polkoff K, Bionaz M, et al. Use of pig as a model for mesenchymal stem cell therapies for bone regeneration. *Anim Biotechnol.* 2017;1–13.
26. Herly M, Ørholt M, Glowinski PV, et al. Quantifying long-term retention of excised fat grafts: a longitudinal, retrospective cohort study of 108 patients followed for up to 8.4 years. *Plast Reconstr Surg.* 2017;139:1223–1232.
27. Glowinski PV, Herly M, Müller FC, et al. Avoiding a systematic error in assessing fat graft survival in the breast with repeated magnetic resonance imaging. *Plast Reconstr Surg Glob Open.* 2016;4:e1023.
28. Glowinski PV, Herly M, Mathiasen AB, et al. Overcoming the bottleneck of platelet lysate supply in large-scale clinical expansion of adipose-derived stem cells: a comparison of fresh versus three types of platelet lysates from outdated buffy coat-derived platelet concentrates. *Cytotherapy.* 2017;19:222–234.
29. Williams KJ, Godke RA, Bondioli KR. Isolation and culture of porcine adipose tissue-derived somatic stem cells. *Methods Mol Biol.* 2011;702:77–86.
30. Casado JG, Gomez-Mauricio G, Alvarez V, et al. Comparative phenotypic and molecular characterization of porcine mesenchymal stem cells from different sources for translational studies in a large animal model. *Vet Immunol Immunopathol.* 2012;147:104–112.
31. Niada S, Ferreira LM, Arrigoni E, et al. Porcine adipose-derived stem cells from buccal fat pad and subcutaneous adipose tissue for future preclinical studies in oral surgery. *Stem Cell Res Ther.* 2013;4:148.
32. Dos-Anjos Vilaboa S, Navarro-Palou M, Llull R. Age influence on stromal vascular fraction cell yield obtained from human lipospirates. *Cytotherapy.* 2014;16:1092–1097.
33. Rodriguez J, Pratta AS, Abbassi N, et al. Evaluation of three devices for the isolation of the stromal vascular fraction from adipose tissue and for ASC culture: a comparative study. *Stem Cells Int.* 2017;2017:9289213.
34. Brown JC, Shang H, Li Y, et al. Isolation of adipose-derived stromal vascular fraction cells using a novel point-of-care device: cell characterization and review of the literature. *Tissue Eng Part C Methods.* 2017;23:125–135.
35. Iyyanki T, Hubenak J, Liu J, et al. Harvesting technique affects adipose-derived stem cell yield. *Aesthet Surg J.* 2015;35:467–476.
36. Schreml S, Babilas P, Fruth S, et al. Harvesting human adipose tissue-derived adult stem cells: resection versus liposuction. *Cytotherapy.* 2009;11:947–957.
37. Duscher D, Luan A, Rennert RC, et al. Suction assisted liposuction does not impair the regenerative potential of adipose derived stem cells. *J Transl Med.* 2016;14:126.
38. Jurgens WJ, Oedayrajsingh-Varma MJ, Helder MN, et al. Effect of tissue-harvesting site on yield of stem cells derived from adipose tissue: implications for cell-based therapies. *Cell Tissue Res.* 2008;332:415–426.
39. Faustini M, Bucco M, Chlapanidas T, et al. Nonexpanded mesenchymal stem cells for regenerative medicine: yield in stromal vascular fraction from adipose tissues. *Tissue Eng Part C Methods.* 2010;16:1515–1521.
40. Peltoniemi HH, Salmi A, Miettinen S, et al. Stem cell enrichment does not warrant a higher graft survival in lipofilling of the breast: a prospective comparative study. *J Plast Reconstr Aesthet Surg.* 2013;66:1494–1503.
41. Choi M, Small K, Levovitz C, et al. The volumetric analysis of fat graft survival in breast reconstruction. *Plast Reconstr Surg.* 2013;131:185–191.
42. Trojahn Kølle SF, Oliveri RS, Glowinski PV, et al. Pooled human platelet lysate versus fetal bovine serum—investigating the proliferation rate, chromosome stability and angiogenic potential of human adipose tissue-derived stem cells intended for clinical use. *Cytotherapy.* 2013;15:1086–1097.
43. Fekete N, Gadelorge M, Fürst D, et al. Platelet lysate from whole blood-derived pooled platelet concentrates and apheresis-derived platelet concentrates for the isolation and expansion of human bone marrow mesenchymal stromal cells: production process, content and identification of active components. *Cytotherapy.* 2012;14:540–554.
44. Shih DT, Burnouf T. Preparation, quality criteria, and properties of human blood platelet lysate supplements for ex vivo stem cell expansion. *N Biotechnol.* 2015;32:199–211.
45. Doucet C, Ernou I, Zhang Y, et al. Platelet lysates promote mesenchymal stem cell expansion: a safety substitute for animal serum in cell-based therapy applications. *J Cell Physiol.* 2005;205:228–236.
46. Lange C, Cakiroglu F, Spiess AN, et al. Accelerated and safe expansion of human mesenchymal stromal cells in animal serum-free medium for transplantation and regenerative medicine. *J Cell Physiol.* 2007;213:18–26.
47. Bernardo ME, Cometa AM, Pagliara D, et al. Ex vivo expansion of mesenchymal stromal cells. *Best Pract Res Clin Haematol.* 2011;24:73–81.
48. Bieback K. Platelet lysate as replacement for fetal bovine serum in mesenchymal stromal cell cultures. *Transfus Med Hemother.* 2013;40:326–335.
49. Aldén A, Gonzalez L, Persson A, et al. Porcine platelet lysate as a supplement for animal cell culture. *Cytotechnology.* 2007;55:3–8.
50. Zaar M, Secher NH, Gam CM, et al. Interindividual variation in platelets and the cardiovascular response to haemorrhage in the pig. *Blood Coagul Fibrinolysis.* 2011;22:92–97.
51. Ross DW, Ayscue LH, Watson J, et al. Stability of hematologic parameters in healthy subjects. Intraindividual versus interindividual variation. *Am J Clin Pathol.* 1988;90:262–267.

52. Juhl M, Tratwal J, Follin B, et al. Comparison of clinical grade human platelet lysates for cultivation of mesenchymal stromal cells from bone marrow and adipose tissue. *Scand J Clin Lab Invest.* 2016;76:93–104.
53. Rauch C, Feifel E, Amann EM, et al. Alternatives to the use of fetal bovine serum: human platelet lysates as a serum substitute in cell culture media. *ALTEX.* 2011;28:305–316.
54. Wang KH, Kao AP, Wangchen H, et al. Optimizing proliferation and characterization of multipotent stem cells from porcine adipose tissue. *Biotechnol Appl Biochem.* 2008;51:159–166.
55. Williams KJ, Picou AA, Kish SL, et al. Isolation and characterization of porcine adipose tissue-derived adult stem cells. *Cells Tissues Organs.* 2008;188:251–258.