

# BMJ Open Mortality in chronic kidney disease and renal replacement therapy: a population-based cohort study

Martin Neovius,<sup>1</sup> Stefan H Jacobson,<sup>2</sup> Jonas K Eriksson,<sup>1</sup> Carl-Gustaf Elinder,<sup>3,4</sup> Britta Hylander<sup>5</sup>

**To cite:** Neovius M, Jacobson SH, Eriksson JK, *et al.* Mortality in chronic kidney disease and renal replacement therapy: a population-based cohort study. *BMJ Open* 2014;**4**: e004251. doi:10.1136/bmjopen-2013-004251

► Prepublication history and additional material for this paper is available online. To view these files please visit the journal online (<http://dx.doi.org/10.1136/bmjopen-2013-004251>).

Received 15 October 2013

Revised 10 January 2014

Accepted 17 January 2014

## ABSTRACT

**Objective:** To compare mortality in chronic kidney disease (CKD) stages 4 and 5 (estimated glomerular filtration rate <30 mL/min/1.73 m<sup>2</sup>), peritoneal dialysis, haemodialysis and transplanted patients.

**Design:** Population-based cohort study.

**Setting:** Swedish national healthcare system.

**Participants:** Swedish adult patients with CKD stages 4 and 5 (n=3040; mean age 66 years), peritoneal dialysis (n=725; 60 years), haemodialysis (n=1791; 62 years) and renal transplantation (n=606; 48 years) were identified in Stockholm County clinical quality registers for renal disease between 1999 and 2010. Five general population controls were matched to each patient by age, sex and index year.

**Exposure:** CKD status (stage 4 or 5/peritoneal dialysis/haemodialysis/transplanted).

**Primary outcome:** All-cause mortality was ascertained from the Swedish Causes of Death Register. Mortality HRs were estimated using Cox regression conditioned on age, sex, diabetes status, education level and index year.

**Results:** During 6553 person-years, 766 patients with CKD stages 4 and 5 died (deaths/100 person-years 12, 95% CI 11 to 13) compared with 186 deaths during 1113 person-years in peritoneal dialysis (17, 95% CI 15 to 19), 924 deaths during 3680 person-years in haemodialysis (25, 95% CI 23 to 27) and 53 deaths during 2935 person-years in transplanted patients (1.8, 95% CI 1.4 to 2.4). Against matched general population controls, the mortality HR was 3.6 (95% CI 3.2 to 4.0) for CKD, 5.6 (95% CI 3.5 to 8.9) for transplanted patients, 9.2 (95% CI 6.6 to 12.7) for peritoneal dialysis and 12.6 (95% CI 10.8 to 14.6) for haemodialysis. In direct comparison versus CKD, the mortality HR was 1.7 (95% CI 1.4 to 2.1) for peritoneal dialysis, 2.6 (95% CI 2.3 to 2.9) for haemodialysis and 0.5 (95% CI 0.3 to 0.7) for transplanted patients.

**Conclusions:** We did not find support for mortality in CKD to be similar to dialysis mortality. The patients with CKD stages 4 and 5 had considerably lower mortality risk than dialysis patients, and considerably higher risk than transplanted patients and matched general population controls.

## Strengths and limitations of this study

- This study was population based with no restrictions regarding age or comorbidities, and the data were collected from routine clinical care centres to which there is universal access in Sweden.
- Using the unique personal identity number of each Swedish resident, follow-up was complete regarding mortality.
- Although all renal replacement therapy patients in the catchment area were included, an unknown number of patients with chronic kidney disease stages 4 and 5 were missed, as the condition is underdiagnosed.
- Direct comparison of mortality across different health states is complicated by channelling issues, as patients in renal replacement therapy are required to have survived the chronic kidney disease health state.

## INTRODUCTION

Mortality is substantially elevated in patients with chronic kidney disease (CKD) and dialysis,<sup>1–3</sup> with some studies describing patients with CKD in stages 4 and 5 (estimated glomerular filtration rate (eGFR) 15–29 and <15 mL/min/1.73 m<sup>2</sup>, respectively) as having mortality rates approaching the rates in dialysis.<sup>1</sup> However, there are no studies directly quantifying the relative mortality in CKD, dialysis (separating peritoneal and haemodialysis) and transplanted patients.

An analysis of an insured US population found patients in CKD stages 4 and 5 to approach dialysis mortality rates with a three-fold and sixfold higher mortality risk, respectively, than patients with eGFR ≥60.<sup>1</sup> This can be compared with a standardised mortality ratio of 8 reported in Swedish incident patients with CKD stages 4 and 5 followed for up to almost 7 years,<sup>2</sup> and with HRs ranging from 3.7 to 7.0 for stage 4 patients (eGFR 15–29) with varying levels of



CrossMark

For numbered affiliations see end of article.

## Correspondence to

Dr Martin Neovius;  
Martin.Neovius@ki.se

albumin-to-creatinine ratio in a meta-analysis of more than 100 000 patients, using patients with an eGFR of 90–104 as reference.<sup>4</sup>

Regarding dialysis mortality, a large European study showed an eightfold higher age-standardised mortality due to cardiovascular and non-cardiovascular death compared with the general population.<sup>3</sup> The study did not distinguish between peritoneal dialysis and haemodialysis.

These US and European studies indicate that mortality in CKD stages 4 and 5 may be as high as in dialysis. However, control groups differed between the studies (patients with normal kidney function defined as eGFR  $\geq 60$ <sup>1</sup> or 90–104<sup>4</sup>; aggregated Swedish<sup>2</sup> or European life tables<sup>3</sup>), and mortality may differ between modes of dialysis.<sup>5</sup>

The aim of this population-based cohort study was to examine mortality in CKD stages 4 and 5, peritoneal dialysis, haemodialysis and transplanted patients in relation to matched general population controls, and directly with each other.

## METHODS

This population-based cohort study was performed in the Swedish healthcare system using patients' data from clinical quality registers kept for quality of care evaluation in Stockholm County. These data sources were combined with matched general population controls, and enriched with outcome and exposure data via linkage to nationwide health registers kept by the National Board of Health and Welfare and demographic registers at Statistics Sweden. Register linkage was performed using the unique personal identity number assigned to each Swedish resident.<sup>6</sup> Ethical approval was granted by the regional ethics committee at Karolinska Institutet, Stockholm, Sweden.

### CKD and the Swedish National Health Service

Sweden had a population of 9.4 million on 31 December 2010 (<http://www.scb.se>), and comprised 21 counties. Stockholm County was the biggest with 2.1 million inhabitants, accounting for 22% of the population. The Swedish healthcare system was tax funded and offered universal access, and patients with renal replacement therapy were treated by nephrologists in inpatient and outpatient hospital care.<sup>7</sup> Care for patients with CKD was a mix of mainly outpatient hospital and primary care. The decision to initiate renal replacement therapy was made by nephrologists from clinical evaluations based on the Swedish guidelines<sup>8</sup> originating from the National Kidney Foundation-Kidney Disease Outcomes Quality Initiative (NKF-K/DOQI) guidelines<sup>9</sup> and the corresponding European guidelines.<sup>10</sup>

### Quality register sources

#### Patients with CKD

Data from the Stockholm County CKD Register were used, including adult patients with CKD in stages 4 and 5

and not on dialysis registered at Karolinska and Danderyd University Hospital from 1999 to 2010 in the outpatient setting. This does not include all patients with CKD stages 4 and 5 in the county, as some get care elsewhere and some remain undetected. Stages 4 and 5 were defined as an eGFR of 15–29 and  $<15$ , respectively. GFR was estimated using the abbreviated Modification of Diet in Renal Disease equation ( $\text{mL/min/1.73 m}^2$ ) using serum creatinine levels.<sup>11</sup> Data on albuminuria were incomplete and, therefore, no analyses by albuminuria status were performed.

### Renal replacement therapy patients

Data on dialysis initiation, type of dialysis and transplantation were collected from the Swedish Register of Renal Replacement Therapy, including all adult patients on renal replacement therapy in Stockholm County.<sup>12 13</sup>

### The National Patient Register

Data on inpatient and outpatient hospital care were retrieved from the Swedish National Patient Register.<sup>14</sup> This register contains the personal identity number, visit/admission date (and discharge date for inpatients) and main as well as contributory diagnoses coded according to the International Classification of Diseases V.10 (ICD-10). The register reached national coverage in 1987 for inpatient care, and the outpatient component was added in 2001.

From inpatient and outpatient care registered in the National Patient Register, data on hospital visits listing diabetes, malignancies, circulatory disease and chronic obstructive pulmonary disease were gathered. Visits listing these diagnoses were searched for during the past 10 years (ICD-9 and ICD-10 codes provided in see online supplementary eTable 1).

### Matched general population control cohort

From the Register of the Total Population at Statistics Sweden, up to five general population controls were matched to each patient at the time of inclusion into the CKD register, and renal replacement therapy initiation, using age ( $\pm 1$  year), sex and index year as matching factors. Data on emigration status and highest attained education were also retrieved from Statistics Sweden.

### Outcome and follow-up

The primary outcome was all-cause mortality. Secondary outcomes for patients with CKD included initiation of renal replacement therapy and the composite outcome death or dialysis.

Dates and causes of death were retrieved from the Causes of Death Register kept by the National Board of Health and Welfare. Dates of death were available until 31 July 2010, while main and contributory death causes were available until 31 December 2008.

Patients with CKD and renal replacement therapy included from 1 January 1999 were analysed. Follow-up

started at date of inclusion into the Stockholm CKD Register, dialysis initiation or transplantation. Patients accrued person-time in a specific health state until death, transition to another health state, emigration or 31 July 2010, whichever came first.

### Statistical analysis

Unadjusted incidence rates and Kaplan-Meier curves were used to present absolute risks. For patients with CKD, a Cox proportional hazards model was used to model time to dialysis, and the composite outcome death or dialysis. The models were adjusted for age, sex, education level ( $\leq 9$ , 10–12,  $>12$  years, missing), baseline eGFR (stage 4 vs 5), comorbidity status and index year.

### Comparison versus the general population

In mortality analyses versus matched general population controls, Cox models conditioned on age, sex, education level, diabetes status and index year were used. Some patients did not have a full five controls, but were still included in the analyses, while patients with no controls were excluded. For dialysis and transplanted patients, the Andersen-Gill<sup>15</sup> method was applied allowing for patients to re-enter a health state after exiting.

In order to investigate whether potential differences in all-cause mortality were driven by cardiovascular mortality, sensitivity analyses were performed for cardiovascular as well as non-cardiovascular deaths. An analysis was also performed to compare mortality by education level.

### Direct comparison of CKD versus renal replacement therapy

To directly compare mortality in the different health states, a Cox model conditioned on age, sex, education level, diabetes status and index year was used with health state as the primary predictor.

Missing data on education level were handled using the missing indicator method. Data were complete on age, sex and register-determined comorbidity status. Missing baseline eGFR resulted in exclusion from CKD analyses.

Statistical analyses were performed using SAS (V.9.3) and Stata (V.11). All *p* values are two-sided and *p* values  $<0.05$  were considered statistically significant.

## RESULTS

A total of 4249 patients were included. Follow-up of mortality was complete and all patients were analysed, except for 19 patients with CKD who were excluded due to missing baseline eGFR.

Patients' characteristics at inclusion, dialysis initiation and transplantation are shown in [table 1](#). Patients with CKD were, on average, 66 years old at inclusion, while dialysis patients were younger, and transplanted patients considerably younger: 48% of patients with CKD were more than 70 years old, compared with 37% of haemodialysis, 28% of peritoneal dialysis and 0% of the

transplanted patients. All groups were predominantly men, and the education level was broadly similar to that in the general population.

Regarding selected register-identified comorbidities, the patients with CKD and dialysis were similar, while the younger transplanted group displayed a lower prevalence. More than 30% of patients (except the transplanted group) had diabetes, compared with 3–7% in the matched general population (see online supplementary eTable 2). Approximately 80% of patients had circulatory disease history at inclusion, with about 10% having had myocardial infarction and 10% stroke (except transplanted patients). In patients with CKD and dialysis, malignancies were also more common than in the general population.

In the CKD cohort at inclusion, the mean eGFR was 18 (SD 6; median 18; range 4.1–29.9). A third ( $n=999$ ) had values  $<15$ , while 67% ( $n=2041$ ) had values between 15 and 29 (full distribution shown in see online supplementary eFigure).

### Observation time and deaths

Crude death rates were highest in haemodialysis and lowest in transplanted patients ([table 2](#); [figure 1](#)). When stratified by age, crude mortality rates were considerably lower in patients with CKD compared with dialysis patients, but remained higher than in transplanted patients ([figure 2](#)).

### Risk of dialysis and death in CKD

In patients with CKD, the analysis of time to death and time to dialysis was affected by the concurrent risk of starting dialysis or dying, respectively: older age was associated with an increased risk of death, but a decreased risk of dialysis progression ([table 3](#)). When analysing death and dialysis as a composite outcome, age displayed a borderline association. Having an eGFR of  $<15$  compared with 15–29 at inclusion was associated with an almost threefold increased risk of death or dialysis, while male sex was associated with a smaller risk increase, as was low compared with high education and presence of comorbidity.

### Mortality compared with the general population

Against matched general population controls, the mortality HR was 3.6 (95% CI 3.3 to 4.0) for CKD, 5.6 (95% CI 3.5 to 8.9) for transplanted, 9.2 (95% CI 6.6 to 12.7) for peritoneal dialysis and 12.6 (95% CI 10.8 to 14.6) for haemodialysis patients ([figure 3](#)). Mortality HRs were statistically significant for cardiovascular as well as non-cardiovascular deaths for all groups.

### Mortality in CKD versus renal replacement therapy

In a direct comparison of patients in different health states (conditioned on age, sex, diabetes status, education level and index year), all groups differed significantly from each other in terms of mortality hazard: transplanted patients had the lowest risk, followed by

**Table 1** Participant characteristics at chronic kidney disease register inclusion, start of dialysis or transplantation

	Chronic kidney disease			Peritoneal dialysis	Haemodialysis	Transplanted
	Stage 4	Stage 5	Stages 4 and 5			
N	2041	999	3040	725	1791	606
Sex (% men)	1389 (68)	586 (59)	1975 (65)	461 (64)	1130 (63)	387 (64)
Age (years)						
Mean (SD)	67 (15)	65 (15)	66 (15)	60 (15)	62 (15)	48 (12)
Median (25th–75th)	70 (58–78)	68 (56–77)	69 (58–78)	62 (51–72)	65 (54–75)	50 (39–58)
n (%)						
18–49	288 (14)	164 (16)	452 (15)	165 (23)	353 (20)	310 (51)
50–59	289 (14)	158 (16)	447 (15)	169 (23)	324 (18)	187 (31)
60–69	457 (22)	217 (22)	674 (22)	187 (26)	446 (25)	107 (18)
≥70	1007 (49)	460 (46)	1467 (48)	204 (28)	668 (37)	2 (0)
Education (years)*						
≤9	370 (28%)	211 (30%)	581 (29%)	153 (26%)	414 (31%)	127 (21%)
10–12	565 (42%)	276 (40%)	841 (41%)	240 (40%)	546 (41%)	255 (42%)
>12	361 (27%)	162 (23%)	523 (26%)	177 (30%)	275 (20%)	212 (35%)
Missing	35 (3%)	49 (7%)	84 (4%)	26 (4%)	112 (8%)	12 (2%)
Comorbidity†						
Diabetes	778 (38%)	311 (31%)	1089 (36%)	229 (32%)	634 (35%)	134 (22%)
Malignancies	355 (17%)	156 (16%)	511 (17%)	91 (13%)	319 (18%)	29 (5%)
Circulatory disease	1678 (82%)	739 (74%)	2417 (80%)	598 (82%)	1484 (83%)	461 (76%)
Hypertension	1391 (68%)	613 (61%)	2004 (66%)	517 (71%)	1193 (67%)	402 (66%)
Cardiovascular disease	946 (46%)	379 (38%)	1325 (44%)	297 (41%)	867 (48%)	147 (24%)
Myocardial Infarction‡	276 (14%)	117 (12%)	393 (13%)	93 (13%)	236 (13%)	21 (3%)
Stroke	228 (11%)	117 (12%)	345 (11%)	64 (9%)	185 (10%)	27 (4%)
COPD§	133 (7%)	55 (6%)	188 (6%)	32 (4%)	121 (7%)	11 (2%)

\*Education level only available in patients <75 years.

†Comorbid conditions defined as having a visit in inpatient or outpatient care during the past 10 years with a main or subdiagnosis of the respective ICD-codes used (specified in see online supplementary eTable 1).

‡Myocardial infarction also included as a subgroup of cardiovascular disease.

§Chronic obstructive pulmonary disease.

COPD, chronic obstructive pulmonary disease; ICD, International Classification of Diseases.

patients with CKD stages 4 and 5, peritoneal dialysis and haemodialysis patients (table 4; all  $p<0.001$ ). Compared with patients with CKD, peritoneal dialysis

had a 1.7 (95% CI 1.4 to 2.1) and haemodialysis patients a 2.6 (95% CI 2.3 to 2.9) times greater mortality hazard.

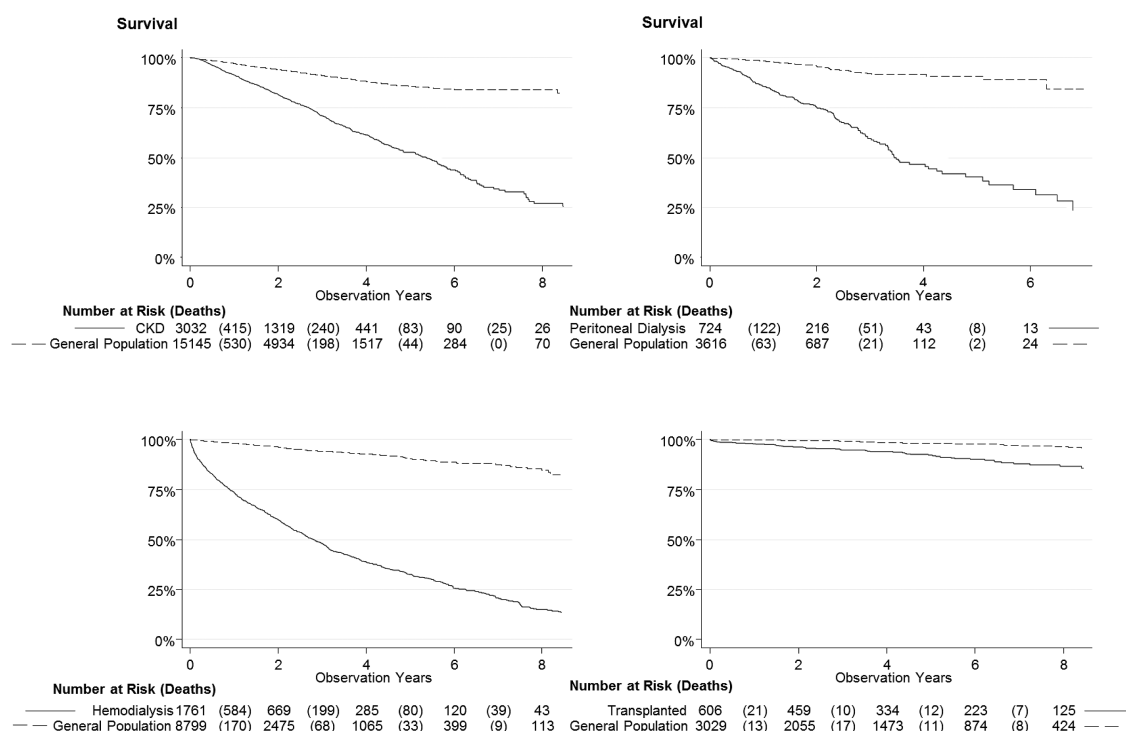
**Table 2** Mortality and accumulated person-years by health state

	Chronic kidney disease stages 4 and 5	Peritoneal dialysis	Haemodialysis	Transplanted
N	3040	725	1791	606
Person-years	6553	1113	3680	2935
Mean (SD)	2.2 (1.7)	1.5 (1.4)	2.1 (2.2)	4.8 (3.2)
Median (25th–75th centile)	1.7 (0.8–3.2)	1.1 (0.5–2.3)	1.3 (0.4–3.0)	4.6 (2.1–7.4)
Deaths (1999–2010)	766	186	924	53
Circulatory deaths (1999–2008)*	381 (76%)	128 (85%)	513 (69%)	26 (67%)
Deaths/1000 person-years (95% CI)				
Patients	117 (109 to 125)	167 (145 to 193)	251 (235 to 268)	18 (14 to 24)
Matched general population controls†	51 (48 to 54)	21 (17 to 26)	20 (18 to 22)	4 (3 to 5)

\*Causes of death are not available for deaths occurred in 2009 and 2010 (530/1929 deaths; 27%). Cardiovascular causes determined from main and contributory diagnoses.

†Matched 5:1 by age, sex and index year.





**Figure 1** Survival curves describing time to death for patients with chronic kidney disease, peritoneal dialysis, haemodialysis and transplanted patients, as well as matched general population controls.

### Education level and mortality

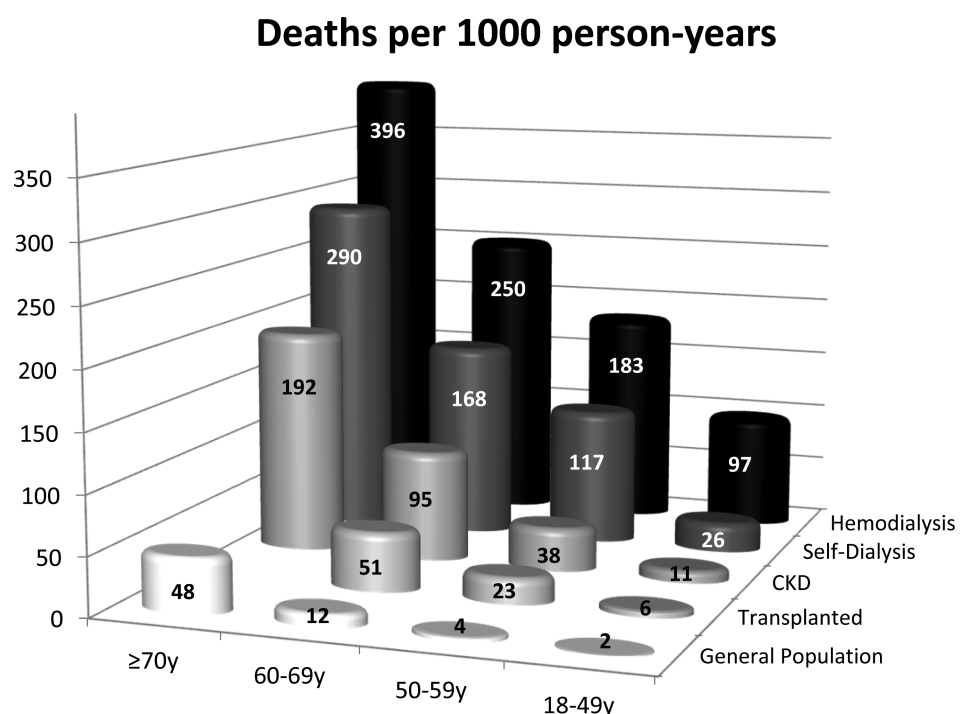
Nine years of education or less, compared with more than 12 years, was associated with an increased mortality hazard overall (HR 1.4, 95% CI 1.2 to 1.7; [figure 4](#)). The HR point estimate for  $\leq 9$  years of education versus  $>12$  years was elevated in all health states, but did not reach statistical significance in the smaller peritoneal dialysis and transplanted groups.

### DISCUSSION

#### Principal findings

In this population-based cohort study, we did not find support for mortality in CKD to be similar to dialysis mortality. Relative age-adjusted mortality was lowest in the transplanted group followed by CKD, peritoneal dialysis and haemodialysis. Compared with dialysis patients, patients with CKD had lower absolute mortality in

**Figure 2** Crude mortality rates by health state and age.



**Table 3** Adjusted HRs for risk of progressing to dialysis, death and death or dialysis for patients with chronic kidney disease stages 4 and 5 (conditioned on index year; n=3040)

	Adjusted HR (95% CI)		
	Dialysis	Death	Death or dialysis
eGFR* <15	3.98 (3.47 to 4.56) p<0.001	1.62 (1.37 to 1.92) p<0.001	2.75 (2.48 to 3.04) p<0.001
eGFR* 15–29 (reference)	1.0	1.0	1.0
Demography			
Male	1.13 (0.99 to 1.28) p=0.06	1.15 (0.98 to 1.34) p=0.08	1.14 (1.03 to 1.25) p=0.01
Female (reference)	1.0	1.0	1.0
Age (years)			
18–49	1.29 (1.07 to 1.56) p=0.009	0.31 (0.15 to 0.65) p=0.002	1.19 (0.99 to 1.42) p=0.06
50–59 (reference)	1.0	1.0	1.0
60–69	0.98 (0.81 to 1.18) p=0.84	2.36 (1.65 to 3.39) p<0.001	1.16 (0.99 to 1.36) p=0.07
≥70	0.73 (0.60 to 0.88) p=0.001	3.42 (2.43 to 4.80) p<0.001	1.17 (1.00 to 1.37) p=0.05
Education level (years)			
≤9	1.12 (0.93 to 1.35) p=0.2	1.43 (1.08 to 1.90) p=0.01	1.21 (1.04 to 1.41) p=0.01
10–12	1.09 (0.92 to 1.30) p=0.3	1.24 (0.93 to 1.64) p=0.1	1.15 (0.99 to 1.33) p=0.06
>12 (reference)	1.0	1.0	1.0
Comorbidity			
Diabetes	1.31 (1.15 to 1.49) p<0.001	1.26 (1.08 to 1.46) p=0.003	1.30 (1.18 to 1.43) p<0.001
Circulatory disease	1.15 (0.99 to 1.33) p=0.06	1.59 (1.27 to 2.00) p<0.001	1.23 (1.09 to 1.39) p=0.001
Malignancy	1.03 (0.88 to 1.21) p=0.69	1.50 (1.29 to 1.75) p<0.001	1.24 (1.11 to 1.38) p<0.001
Events	1075	766	1841
Person-years†	6553	6553	6553

\*Estimated glomerular filtration rate (using the MDRD formula; mL/min/1.73 m<sup>2</sup>).

†Patients censored at time of death, transition to another health state or end of follow-up, whichever came first. Failures in chronic kidney disease include only deaths occurring while patients are in the chronic kidney disease health state, not deaths occurring after switching to renal replacement therapy.

eGFR, estimated glomerular filtration rate; MDRD, Modification of Diet in Renal Disease.

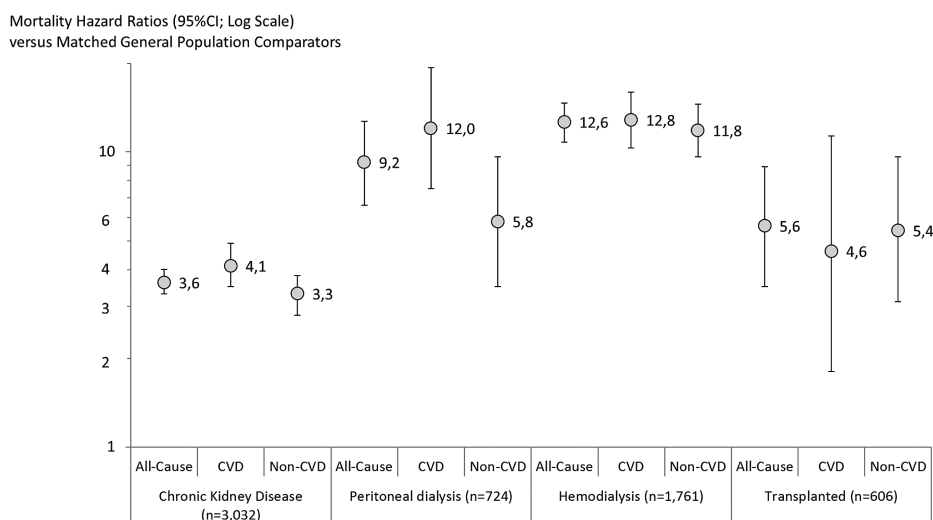
age-adjusted analyses, lower relative mortality versus the general population and lower relative mortality in direct comparison.

### Strengths and weaknesses

This study was population based, and the data were collected from routine clinical care centres to which there is universal access in Sweden. No restrictions were set regarding demography or comorbidities, increasing generalisability. Another strength was that we followed patients from CKD to death directly, or via different forms of renal

replacement therapy. We could estimate death rates in CKD stages 4 and 5, as well as in haemodialysis, peritoneal dialysis and transplanted patients during the same calendar period and at the same hospitals.

Using the unique personal identity number of each Swedish resident and linkage to national mortality data, follow-up was complete. Using national registers, we could also collect data on comorbidities, as well as match general population controls to each patient, which is likely to result in more accurate estimates than if using aggregated life-table data.

**Figure 3** Conditional all-cause, cardiovascular (CVD) and non-cardiovascular (non-CVD) mortality HRs versus matched general population controls.

**Table 4** Conditional\* mortality HRs for chronic kidney disease stages 4 and 5, peritoneal dialysis, haemodialysis and transplanted patients compared with each other

	Mortality HRs (95% CI)			
	Chronic kidney disease stages 4 and 5	Peritoneal dialysis	Haemodialysis	Transplantation
Chronic kidney disease stages 4 and 5	1.0	1.7 (1.4 to 2.1) p<0.001	2.6 (2.3 to 2.9) p<0.001	0.5 (0.3 to 0.7) p<0.001
Peritoneal dialysis	0.6 (0.5 to 0.7) p<0.001	1.0	1.5 (1.2 to 1.8) p<0.001	0.3 (0.2 to 0.4) p<0.001
Haemodialysis	0.4 (0.3 to 0.4) p<0.001	0.7 (0.6 to 0.8) p<0.001	1.0	0.2 (0.1 to 0.3) p<0.001
Transplantation	2.1 (1.5 to 3.0) p<0.001	3.6 (2.5 to 5.3) p<0.001	5.3 (3.7 to 7.6) p<0.001	1.0
N	3040	725	1791	606
Deaths	766	186	924	53
Person-years	6553	1113	3680	2935

\*Models conditioned on age (18–49, 50–59, 60–69 and ≥70 years), sex, education level (≤9, 10–12 and >12 years), diabetes and index year.

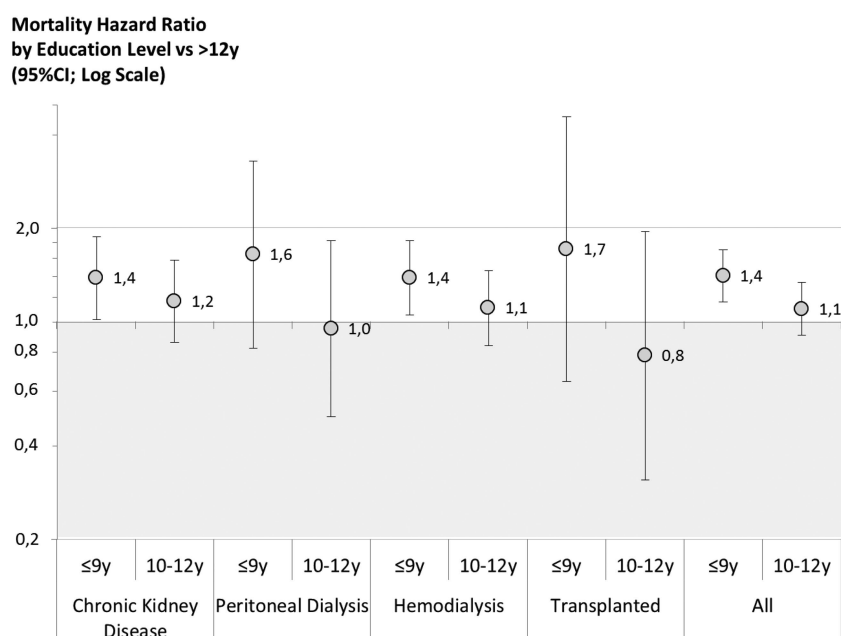
One limitation was that while all renal replacement therapy patients in Stockholm County were included, an unknown number of patients with CKD were missed: CKD is underdiagnosed and many patients are identified only at dialysis start, or die before identification. Our results should, therefore, only be generalised to patients with CKD in nephrology care.

Second, comparing mortality estimates in the respective health states is complicated by channelling issues, as patients in renal replacement therapy are required to have survived the CKD health state.<sup>16</sup> Such channelling of survivors likely decreases the mortality differential between CKD and dialysis patients. To be selected for transplantation, several prognostic factors are also considered, such as age and diabetes (which we adjusted for), but also general frailty (which we did not capture beyond certain comorbidities). Also, the lower mortality in peritoneal dialysis compared with haemodialysis

should be interpreted with caution, as patients may transfer to haemodialysis at the end of life, inflating haemodialysis mortality estimates. Prognostic factors may also be worse for haemodialysis patients than in patients selected for peritoneal dialysis, although the groups were similar in terms of comorbidity status and education level. Other channelling variables may still influence relative mortality between the groups. Some observations could also support our finding of lower mortality in peritoneal dialysis than haemodialysis: data indicate that more frequent dialysis is beneficial,<sup>17</sup> and peritoneal dialysis does not seem to result in the same degree of myocardial stunning,<sup>5</sup> two factors that could contribute to lower mortality rates in peritoneal dialysis than in haemodialysis.

Finally, several important potential confounders were taken into account, such as age, sex, diabetes status and education level, but residual confounding due to other

**Figure 4** Mortality HRs by education level using >12 years of education as reference.



risk factors cannot be ruled out. For example, ethnicity may affect mortality through various mechanisms, including access to renal transplantation (depending on blood group and tissue type histocompatibility). We did not have access to ethnicity data and could, therefore, not determine whether there was an imbalance between cases and controls. The analyses were also limited by lack of albuminuria data.

### Previous research

Go *et al*<sup>1</sup> analysed 8458 insured patients with CKD stages 4 and 5 with similar mean age as in our study, and similar prevalence of diabetes. Their sample was predominantly female compared with only 35% women in our study. They found age-standardised death rates of 11 and 14/100 person-years in CKD stages 4 and 5, respectively, approaching the levels seen in dialysis. The death rates were standardised to their full study population which was comparatively young (mean age 52 years), complicating comparisons of absolute mortality rates with our study (mean age 66 years). They reported adjusted mortality HRs of 3.2 and 5.9 for the two groups versus insured patients with eGFR $\geq$ 60.

In a meta-analysis of more than 100 000 patients, Matsushita *et al*<sup>4</sup> used eGFR 90–104 as reference and found mortality HRs for patients with CKD stage 4 between 4 and 7 over a range of urine albumin-to-creatinine ratios. Our findings for CKD stages 4 and 5, versus matched general population controls, seem largely congruent with both these previous studies, but appear lower than the standardised mortality ratio of 8.3 reported by Evans *et al*<sup>2</sup> from Sweden. This discrepancy is most likely explained by their exclusion of patients  $\geq$ 75 years old (a patient segment making up 33% of our sample in the current study), as relative mortality compared with the general population decreases with age, pushing our estimates downwards compared with that of Evans *et al*s.

Regarding dialysis mortality, we found cardiovascular and non-cardiovascular mortality to be elevated, similar to findings from a large European analysis of dialysis mortality by de Jager *et al*.<sup>3</sup> They analysed all dialysis patients as a group, while we separated peritoneal dialysis and haemodialysis patients (for which we found differential mortality).

We also found an association between education level and CKD progression, as well as survival in renal replacement therapy. This is in agreement with Swedish findings regarding risk factors for chronic renal failure (unskilled workers vs professionals),<sup>18</sup> and a Danish study on risk of renal replacement therapy (low vs high income families, and low vs high education level).<sup>19</sup>

### Implications

As mortality increases after peritoneal and haemodialysis initiation, optimal timing of dialysis start has been debated, particularly as dialysis is initiated at higher eGFR currently than previously: in the USA, in 1996,

only 4% started dialysis with eGFR $>$ 15, while 15% did in 2005.<sup>20</sup> The trend has been similar in Europe.<sup>21</sup> A recent randomised controlled trial gave no indication that early start was beneficial for survival.<sup>22</sup> Our data showing much higher mortality in peritoneal dialysis and haemodialysis compared with CKD, together with previous findings, indicate that caution should be exercised before initiating dialysis.

### Author affiliations

<sup>1</sup>Clinical Epidemiology Unit, Department of Medicine, Karolinska Institutet, Stockholm, Sweden

<sup>2</sup>Division of Nephrology, Department of Clinical Sciences, Danderyd University Hospital, Karolinska Institutet, Stockholm, Sweden

<sup>3</sup>Nephrology Unit, Intervention and Technology, Department of Clinical Sciences, Karolinska Institutet, Stockholm, Sweden

<sup>4</sup>Unit for Evidence Based Medicine, Stockholm County Council, Stockholm, Sweden

<sup>5</sup>Unit of Renal Medicine, Department of Medicine, Karolinska Institutet, Stockholm, Sweden

**Contributors** MN, SHJ, C-GE and BH conceived the study hypothesis. MN and JE conducted the statistical analyses. MN wrote the first draft of the manuscript. MN, SHJ, JE, C-GE and BH critically reviewed and contributed to the final draft. All authors are guarantors.

**Funding** This work was supported by Stockholm County Council and Baxter.

**Competing interests** MN has received payment for a lecture from Baxter. C-GE and BH have received a grant to their academic institution from Baxter to support the work with this publication. SHJ has acted on an advisory board for Baxter, and received lecture payments at scientific meetings. BH, SHJ and CGE are employed by Stockholm County Council.

**Ethics approval** Ethical approval was granted by the regional ethics committee at Karolinska Institutet, Stockholm, Sweden (DNR: 2009/1225-31/5).

**Provenance and peer review** Not commissioned; externally peer reviewed.

**Data sharing statement** No additional data are available.

**Open Access** This is an Open Access article distributed in accordance with the Creative Commons Attribution Non Commercial (CC BY-NC 3.0) license, which permits others to distribute, remix, adapt, build upon this work non-commercially, and license their derivative works on different terms, provided the original work is properly cited and the use is non-commercial. See: <http://creativecommons.org/licenses/by-nc/3.0/>

### REFERENCES

1. Go AS, Chertow GM, Fan D, *et al*. Chronic kidney disease and the risks of death, cardiovascular events, and hospitalization. *N Engl J Med* 2004;351:1296–305.
2. Evans M, Fryzek JP, Elinder CG, *et al*. The natural history of chronic renal failure: results from an unselected, population-based, inception cohort in Sweden. *Am J Kidney Dis* 2005;46:863–70.
3. de Jager DJ, Grootendorst DC, Jager KJ, *et al*. Cardiovascular and noncardiovascular mortality among patients starting dialysis. *JAMA* 2009;302:1782–9.
4. Matsushita K, van der Velde M, Astor BC, *et al*. Association of estimated glomerular filtration rate and albuminuria with all-cause and cardiovascular mortality in general population cohorts: a collaborative meta-analysis. *Lancet* 2010;375:2073–81.
5. McIntyre CW. Effects of hemodialysis on cardiac function. *Kidney Int* 2009;76:371–5.
6. Ludvigsson JF, Otterblad-Olausson P, Pettersson BU, *et al*. The Swedish personal identity number: possibilities and pitfalls in healthcare and medical research. *Eur J Epidemiol* 2009;24:659–67.
7. Wikstrom B, Forell M, Eichleay MA, *et al*. The financing and organization of medical care for patients with end-stage renal disease in Sweden. *Int J Health Care Finance Econ* 2007;7:269–81.
8. Svensk Njurmedicinsk Förening S. *Riktlinjer för omhändertagande av patienter med njursvikt*. 2nd edn. Svensk Njurmedicinsk Förening (SNF), 2007.



9. Kidney Disease Outcomes Quality Initiative (K/DOQI). K/DOQI clinical practice guidelines on hypertension and antihypertensive agents in chronic kidney disease. *Am J Kidney Dis* 2004;43(5 Suppl 1):S1–290.
10. European Best Practice Guidelines Expert Group on Hemodialysis, European Renal Association. European best practice guidelines. *Nephrol Dial Transplant* 2002;17:7–15.
11. Levey AS, Stevens LA, Schmid CH, *et al.* A new equation to estimate glomerular filtration rate. *Ann Intern Med* 2009;150: 604–12.
12. Svenskt Njurrregister S. *Renal replacement therapy in Sweden 1991–2009*. Svenskt Njurrregister/Swedish Renal Registry, 2010.
13. Schon S, Ekberg H, Wikstrom B, *et al.* Renal replacement therapy in Sweden. *Scand J Urol Nephrol* 2004;38:332–9.
14. Socialstyrelsen. In English—the National Patient Register. 2011. <http://www.socialstyrelsen.se/register/halsodataregister/patientregistret/inenglish>
15. Andersen PK, Gill RD. Cox's regression model for counting processes: a large sample study. *Ann Stat* 1982;10:1100–20.
16. Liu J, Weinhandl ED, Gilbertson DT, *et al.* Issues regarding 'immortal time' in the analysis of the treatment effects in observational studies. *Kidney Int* 2012;81:341–50.
17. Chertow GM, Levin NW, Beck GJ, *et al.* In-center hemodialysis six times per week versus three times per week. *N Engl J Med* 2010;363:2287–300.
18. Fored CM, Ejerblad E, Fryzek JP, *et al.* Socio-economic status and chronic renal failure: a population-based case-control study in Sweden. *Nephrol Dial Transplant* 2003;18:82–8.
19. Hommel K, Rasmussen S, Kamper AL, *et al.* Regional and social inequalities in chronic renal replacement therapy in Denmark. *Nephrol Dial Transplant* 2010;25:2624–32.
20. Rosansky SJ, Clark WF, Eggers P, *et al.* Initiation of dialysis at higher GFRs: is the apparent rising tide of early dialysis harmful or helpful? *Kidney Int* 2009;76:257–61.
21. Stel VS, Tomson C, Ansell D, *et al.* Level of renal function in patients starting dialysis: an ERA-EDTA Registry study. *Nephrol Dial Transplant* 2010;25:3315–25.
22. Cooper BA, Branley P, Bulfone L, *et al.* A randomized, controlled trial of early versus late initiation of dialysis. *N Engl J Med* 2010;363:609–19.