

Review Article

Systematic Review with Meta-Analysis: Fecal Calprotectin as a Surrogate Marker for Predicting Relapse in Adults with Ulcerative Colitis

Jiajia Li , Xiaojing Zhao , Xueting Li, Meijiao Lu , and Hongjie Zhang 

Department of Gastroenterology, The First Affiliated Hospital of Nanjing Medical University, Nanjing, Jiangsu Province 210029, China

Correspondence should be addressed to Hongjie Zhang; hjzhang06@163.com

Received 27 February 2019; Accepted 5 May 2019; Published 28 May 2019

Academic Editor: Bernard Ryffel

Copyright © 2019 Jiajia Li et al. This is an open access article distributed under the Creative Commons Attribution License, which permits unrestricted use, distribution, and reproduction in any medium, provided the original work is properly cited.

The clinical course of ulcerative colitis (UC) is featured by remission and relapse, which remains unpredictable. Recent studies revealed that fecal calprotectin (FC) could predict clinical relapse for UC patients in remission, which has not yet been well accepted. To detect the predictive value of FC for clinical relapse in adult UC patients based on updated literature, we carried out a comprehensive electronic search of PubMed, Web of Science, Embase, and the Cochrane Library to identify all eligible studies. Diagnostic accuracy including pooled sensitivity, specificity, positive likelihood ratio (PLR), negative likelihood ratio (NLR), diagnostic odds ratio (DOR), and pooled area under the receiver operating characteristic (AUROC) was calculated using a random effects model. Heterogeneity across studies was assessed by the I^2 metric. Sources of heterogeneity were detected using subgroup analysis. Metaregression was used to test potential factors correlated to DOR. Publication bias was assessed using Deek's funnel plots. In our study, 14 articles enrolling a total of 1110 participants were finally included, and all articles underwent a quality assessment. Pooled sensitivity, specificity, PLR, and NLR with 95% confidence intervals (CIs) were 0.75 (95% CI: 0.70–0.79), 0.77 (95% CI: 0.74–0.80), 3.45 (95% CI: 2.31–5.14), and 0.37 (95% CI: 0.28–0.49) respectively. The area under the summary receiver operating characteristic (sROC) curve was 0.82, and the diagnostic odds ratio was 10.54 (95% CI: 6.16–18.02). Our study suggested that FC is useful in predicting clinical relapse for adult UC patients in remission as a simple and noninvasive marker.

1. Introduction

Ulcerative colitis (UC), one subtype of inflammatory bowel disease (IBD), which is characterized by chronic mucosal inflammation, affects more than 1 million people in the United States and Europe [1, 2]. The etiology of UC still remains incompletely clear. Studies suggest that intestinal microbial dysbiosis, host genetics, and external environment may play an important role in triggering UC's chronic inflammation and in determining its subsequent disease behavior and outcomes [3–5]. The clinical course of UC is featured by remission and relapse, which remains unpredictable [6]. Uncertain clinical recurrence will affect the life quality of UC patients and require extended therapy as well as extra medical costs [7]. If we were able to identify patients

with a high risk of clinical flare-up, adjusted treatment at a presymptomatic stage could be carried out. Therefore, an earlier prediction of possible relapse is urgently needed for clinical physicians. Generally, endoscopy together with histological examination is considered the standard for assessing UC relapse [8]. However, as an invasive method, it is often intolerable and inconvenient, which limits its use in predicting UC relapse [9]. A simple, reliable, and readily available test is needed to detect an imminent flare for timely escalation of treatment and better disease control.

Fecal calprotectin (FC), a calcium-combined protein, mainly derives from neutrophil cells during inflammation. The concentration of FC reflects the extent of neutrophil migration to the gastrointestinal tract [10]. It is becoming the most useful noninvasive tool for monitoring the

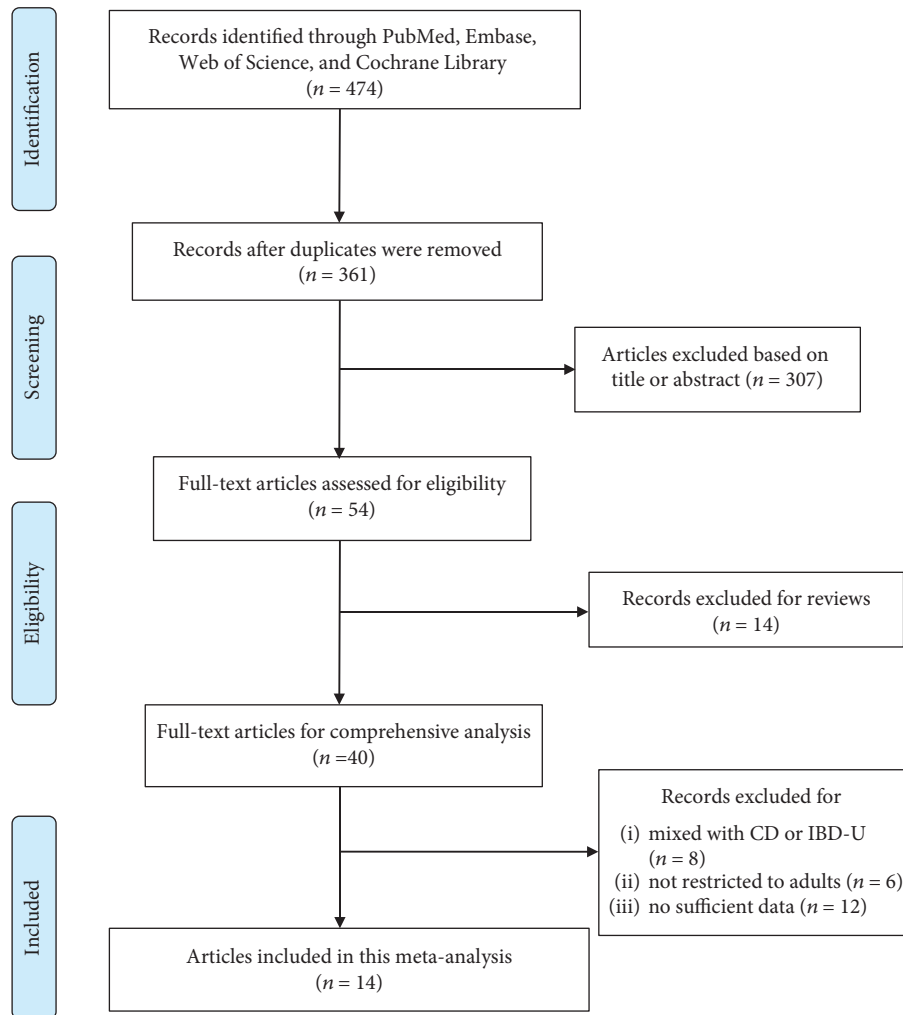


FIGURE 1: Study flow diagram showing the process of selecting studies concerning the diagnostic accuracy of FC in predicting relapse among adult UC patients.

inflammatory status of the mucosa and for assessing patients' response to therapy [11–13]. However, the role of FC as a predictor of clinical relapse in UC patients remains controversial. In the present study, we aim to pool the updated literature in this field and try to figure out the predictive value of FC for clinical relapse in adult UC patients.

2. Materials and Methods

This meta-analysis was conducted in accordance with the Preferred Reporting Items for Systematic Reviews and Meta-Analyses (PRISMA) statement [14].

2.1. Literature Search. Databases including PubMed, Web of Science, Embase, and the Cochrane Library were searched up to December 31, 2018 to identify all eligible studies. To avoid omission of potentially useful articles, we used both Medical Subject Heading (MeSH) terms and free words, including “Inflammatory Bowel Disease;” “Bowel Diseases, Inflammatory;” “Colitis, Ulcerative;” “ulcerative colitis;” “UC;” “calprotectin;” “Leukocyte L1 complex;” “relapse;” “recrudescence;” “recur;” “recrudesce;”

and “recurrence.” Meanwhile, previous systematic reviews and meta-analysis were also explored to seek for potential relevant studies. No language restriction was involved in the search strategy.

2.2. Study Selection. A study was included if it met the following criteria: [1] prospective studies used FC to predict UC relapse, [2] FC level for predicting UC relapse was measured at remission, [3] estimates of diagnostic accuracy (such as sensitivity or specificity) were provided, [4] the identification of relapse was based on clinical symptoms or endoscopic findings, and [5] studies were conducted in adult populations. Two reviewers (Jiajia Li and Xiaojing Zhao) independently reviewed the search results to determine article inclusion while screening the citations. In cases of discordance, a consensus was reached through discussion with another author (Xueting Li). Studies were excluded if they were in consonance with any of the following: [1] patients were diagnosed with other coexisting gastroenterological diseases and [2] studies not separating UC from other IBDs like Crohn's Disease (CD) and Inflammatory Bowel Disease Unclassified (IBD-U).

TABLE 1: Characteristics of the included studies.

Study	Year	Number of patients	Age (year)	Male (%)	FC assay	Standard of relapse	Follow-up time	Results				Cutoff ($\mu\text{g/g}$)
								TP	FP	FN	TN	
Nakurai et al. [20]	2018	113	16–82	50%	PhiCal	WS, partial Mayo score ≥ 3	2 y	34	26	14	39	75
Yamamoto et al. [21]	2018	164	31–39	61.59%	Cell Sciences	WS, MES ≥ 2	1 y	38	22	8	96	115
Keshteli et al. [22]	2017	20	42.7 \pm 18.8	45%	Bühlmann	WS, partial Mayo score ≥ 3	1 y	5	2	2	11	124
Ferreiro-Iglesias et al. [23]	2016	20	19–68	40%	Bühlmann	WS, partial Mayo score ≥ 3	8 w	4	3	0	13	198
Theede et al. [24]	2016	70	39.3 \pm 13.9	72.90%	Bühlmann	WS	1 y	7	8	8	47	321
Yamamoto et al. [27]	2015	80	18–74	58.80%	Cell Sciences	WS, MES ≥ 1	8 w	21	37	3	19	55
Scaioli et al. [26]	2015	74	43.2 \pm 17.9	72%	Calprest	WS, Mayo score > 3	1 y	13	1	7	53	193
Hosseini et al. [25]	2015	154	42 \pm 10	51.30%	Bühlmann	WS, Seo index > 220	1 y	59	9	15	71	341
Jauregui-Amezaga et al. [28]	2014	64	46 \pm 15.3	79%	Cerba Internacional	WS, MES ≥ 1	1 y	7	7	10	40	250
Yamamoto et al. [29]	2014	80	35.1 \pm 0.8	61%	Cell Sciences	WS, MES ≥ 2	1 y	16	14	5	45	170
De Vos et al. [30]	2013	87	48 \pm 15	45%	PhiCal	WS, MES ≥ 2	1 y	8	5	5	69	300
García-Sánchez et al. [33]	2010	69	40.4 \pm 13.1	59%	Calprest	WS, TW score ≥ 11	1 y	17	18	4	20	120
Gisbert et al. [32]	2009	74	43 \pm 13	48%	PhiCal	WS, TW score ≥ 11	1 y	9	16	4	45	164
Costa et al. [31]	2005	41	24–54	71%	Calprest	WS, Mayo score > 3	1 y	17	4	2	18	150

TP: true positive; FP: false positive; FN: false negative; TN: true negative; WS: worsening of symptoms; TW: modified Truelove-Witts score; ET, Edwards and Truelove score; MES: Mayo Endoscopic Subscore. PhiCal, Bühlmann, Cell Sciences, Calprest, and Cerba Internacional are different fecal calprotectin test kits.

2.3. Data Extraction. To ensure accuracy, the quantitative data were collected independently by two investigators. All forms of data were extracted using a standard form, including general information (name of the first author, year of publication, and population characteristics), FC assay, test results, cutoff value, and follow-up time. Test results were presented as the numbers of true positive (TP), false positive (FP), false negative (FN), and true negative (TN) for each study.

2.4. Quality Assessment. Two authors rated each selected study for quality according to the QUADAS-2 (Quality Assessment of Diagnostic Accuracy Studies) tool, which is recommended by the Cochrane Diagnostic Reviewers' Handbook [15]. The QUADAS-2 checklist comprises 4 parts of quality assessment: patient selection, index test, reference standard, and flow and timing. For the first three parts, they each contain two aspects: risk of bias and concerns regarding applicability, while the last part only contains risk of bias. Disagreement was resolved by a consensus.

2.5. Statistical Analysis. Statistical analyses were performed with Meta-DiSc statistical software v. 1.4 (Universidad

Complutense, Madrid, Spain) and Stata statistical software v. 12.0 (StataCorp, College Station, TX). First, for each study, sensitivity, specificity, positive likelihood ratio (PLR), negative likelihood ratio (NLR), and diagnostic odds ratio (DOR) were calculated after constructing a diagnostic 2×2 table. Then, pooled estimates of all included studies with 95% confidence intervals (CIs) were calculated using a DerSimonian-Laird random-effect model. For threshold analysis, correlation between sensitivity and specificity (presented as logit true positive rate (TPR) vs. logit false positive rate (FPR)) was tested to explore threshold effects, and the Moses-Shapiro-Littenberg mode was used to assess constant DOR. After that, a summary receiver operating characteristic (sROC) curve was performed, and depending on whether the DOR is constant, a symmetrical or asymmetrical sROC was used [16]. Heterogeneity across studies was assessed by the I^2 metric. Statistically, $I^2 > 50\%$ indicates that the heterogeneity is significant and the random effects model should be used. Otherwise, the fixed-effect model should be adopted [17, 18]. To investigate the source of heterogeneity, subgroup analysis was conducted. Preplanned subgroups were defined according to the number of patients in the respective studies (<80 or ≥ 80), mean age (<40 or ≥ 40), male ratio ($<50\%$ or

	Risk of bias				Applicability concerns		
	Patient selection	Index test	Reference standard	Flow and timing	Patient selection	Index test	Reference standard
Costa et al., 2005	+	+	+	+	+	?	+
De Vos et al., 2013	+	?	+	?	+	+	?
Ferreiro-Iglesias et al., 2016	?	+	+	?	?	?	?
Garcia-Sanchez et al., 2010	+	+	+	?	+	?	+
Gisbert et al., 2009	+	+	+	+	+	+	+
Hosseini et al., 2015	+	?	+	?	+	+	+
Jauregui-Amezaga et al., 2014	+	+	?	+	+	+	+
Keshteli et al., 2017	?	+	?	+	+	?	+
Nakarai et al., 2018	+	+	?	?	?	+	+
Scaioli et al., 2015	+	?	+	+	+	+	+
Theede et al., 2016	?	+	?	?	?	?	+
Yamamoto et al., 2014	+	?	?	?	+	+	+
Yamamoto et al., 2015	+	+	?	+	+	+	+
Yamamoto et al., 2018	+	+	+	+	?	?	+

- High
? Unclear
+ Low

FIGURE 2: QUADAS-2 risk of bias assessment. +, high; -, low; ?, unclear.

≥50%), FC assay (Bühlmann or non-Bühlmann), FC cutoff (<150 µg/g or ≥150 µg/g), and follow-up time (<1 y or ≥1 y). Based on that, potential factors correlated to DOR were also tested by metaregression. Finally, publication bias was tested using Deek's funnel plot [19]. Continuous values were presented as mean ± standard deviation or a range and discrete variables as numbers and percentages. *P* value < 0.05 was considered statistically significant.

3. Results

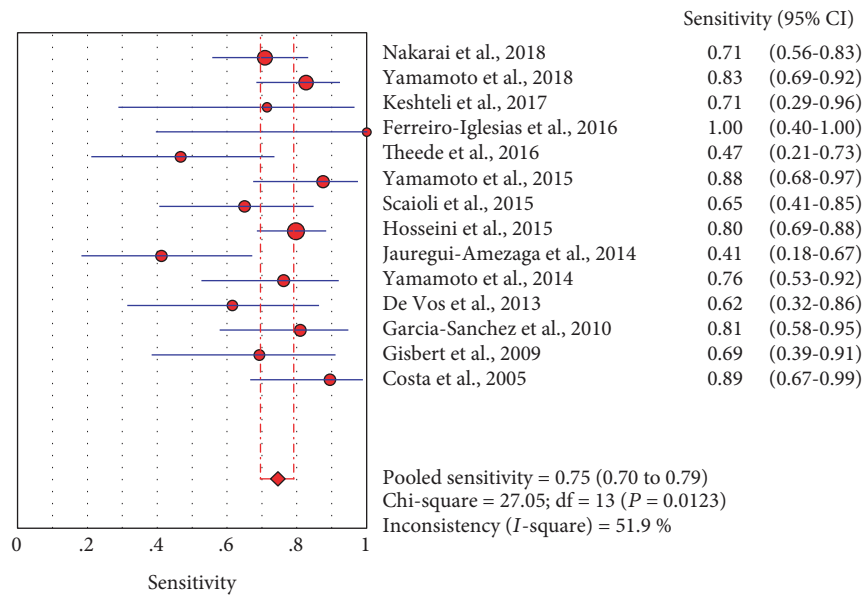
3.1. Study Selection and Characteristics of Included Studies. The flow diagram of the study selection is summarized in Figure 1. The search strategy yielded 474 articles. After the removal of 113 duplicates, 361 citations remained. Then, based on the title or abstract, 307 citations were excluded and the remaining 54 articles were further scanned. 14 articles were excluded for reviews. Another 26 studies were removed for not being restricted to adults, mixing with diseases like CD and IBD-U, or not providing sufficient data. Finally, 14 articles enrolling a total of 1110

subjects were eligible for our meta-analysis [20–33]. The baseline characteristics of the included studies are shown in Table 1.

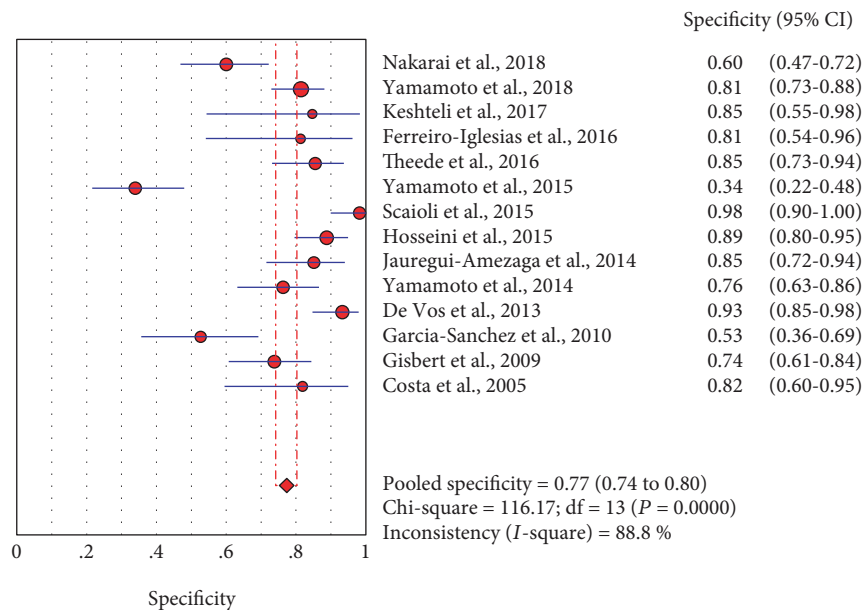
3.2. Assessment of Methodological Quality of the Included Studies. The 14 studies underwent quality assessment using the QUADAS-2 tool. All trials included in our study yielded good quality, thus the pooled results should be persuasive. A summary of the results is presented in Figure 2.

3.3. Diagnostic Accuracy Meta-Analysis. Forest plots in Figures 3(a) and 3(b) show the pooled sensitivity and specificity. The sensitivity ranged from 0.41 to 1 (pooled sensitivity 0.75, 95% CI: 0.70–0.79), while specificity ranged from 0.34 to 0.98 (pooled specificity 0.77, 95% CI: 0.74–0.80). The pooled PLR was 3.45 (95% CI: 2.31–5.14), NLR was 0.37 (95% CI: 0.28–0.49), and DOR was 10.54 (95% CI: 6.16–18.02) (Table 2).

The Spearman correlation coefficient for logit (TPR) vs. logit (FPR) was 0.503 (*P* = 0.067), indicating that the



(a)



(b)

FIGURE 3: Forest plots of pooled sensitivity of FC in predicting relapse of UC in one-year follow-up (a). Forest plots of pooled specificity of FC in predicting relapse of UC (b).

correlation between the TPR and FPR was not significant. The Moses-Shapiro-Littenberg method showed that DOR was constant ($b = -0.239, P = 0.212$). Therefore, a symmetrical sROC was appropriate to calculate the diagnostic accuracy (Figure 4). As shown in Figure 4, the area under the receiver operator curve (AUC) (SE) is 0.82 (0.027) and the Q statistic (SE) is 0.76 (0.025).

3.4. Subgroup Analysis and Metaregression. For all 14 studies, the heterogeneity (I^2) was 51.9% (sensitivity), 88.8% (specificity), 85.4% (positive LR), 51.6% (negative LR), and 57.0% (DOR). To detect possible factors contributing

to heterogeneity, subgroup analysis was performed (Table 2). Factors including the number of patients, age, male/female ratio, FC assay, cutoff value, and follow-up time are all possible sources of heterogeneity. The heterogeneity of DOR was lower in studies with a male/female ratio < 50% ($I^2, 0\%$ vs. 67.7%) and studies with a mean age < 40 ($I^2, 34.9\%$ vs. 62.3%). Studies with a smaller sample size showed lower heterogeneity ($I^2, 39.5\%$ vs. 72.5%). FC was more diagnostically accurate in studies using Bühlmann as the FC assay (DOR = 15.35; 95% CI: 5.28-44.61) compared with studies using other assays (DOR = 9.34; 95% CI: 5.06-17.24). In addition, FC showed more

TABLE 2: Assessment of diagnostic accuracy and heterogeneity in subgroup analysis.

Category	Number of studies	Sensitivity	Specificity	PLR	NLR	DOR	I^2 (%) of DOR
Total	14	0.75 (0.70–0.79)	0.77 (0.74–0.80)	3.45 (2.31–5.14)	0.37 (0.28–0.49)	10.54 (6.16–18.02)	57.0
Number of patients							
≥80	6	0.78 (0.72–0.83)	0.75 (0.71–0.79)	3.39 (1.77–6.51)	0.32 (0.23–0.43)	11.18 (4.96–25.19)	72.5
<80	8	0.68 (0.59–0.76)	0.81 (0.76–0.85)	3.38 (2.10–5.43)	0.44 (0.30–0.63)	9.60 (4.57–20.15)	39.5
Mean age							
≥40	10	0.73 (0.67–0.79)	0.75 (0.71–0.79)	3.34 (2.00–5.58)	0.40 (0.30–0.53)	9.61 (4.75–19.47)	62.3
<40	4	0.77 (0.68–0.85)	0.81 (0.76–0.86)	3.92 (2.96–5.20)	0.30 (0.15–0.62)	13.44 (6.31–28.60)	34.9
Male ratio							
≥50%	10	0.75 (0.70–0.80)	0.75 (0.72–0.79)	3.71 (1.97–5.10)	0.37 (0.26–0.52)	9.98 (5.16–19.32)	67.7
<50%	4	0.70 (0.53–0.84)	0.84 (0.78–0.89)	4.31 (2.38–7.80)	0.39 (0.24–0.62)	12.49 (5.31–29.37)	0
FC assay							
Bühlmann	4	0.75 (0.65–0.83)	0.87 (0.80–0.91)	5.07 (3.32–7.75)	0.34 (0.16–0.72)	15.35 (5.28–44.61)	44.8
Not Bühlmann	10	0.74 (0.68–0.80)	0.75 (0.71–0.78)	3.05 (1.98–4.69)	0.38 (0.28–0.52)	9.34 (5.06–17.24)	58.0
Cutoff value							
≥150 $\mu\text{g/g}$	9	0.71 (0.65–0.78)	0.86 (0.82–0.89)	4.42 (3.00–6.53)	0.38 (0.26–0.55)	14.06 (7.17–27.58)	49.9
<150 $\mu\text{g/g}$	5	0.79 (0.71–0.85)	0.64 (0.58–0.69)	2.19 (1.32–3.64)	0.36 (0.25–0.50)	6.72 (2.95–15.47)	59.8
Follow-up time							
≥1 y	12	0.73 (0.68–0.78)	0.81 (0.78–0.84)	3.66 (2.52–5.31)	0.38 (0.28–0.50)	11.18 (6.32–19.78)	59.8
<1 y	2	0.89 (0.72–0.98)	0.44 (0.33–0.57)	2.20 (0.66–7.28)	0.31 (0.11–0.88)	7.01 (0.92–53.25)	41.0

diagnostic accuracy in studies with longer follow-up time (DOR = 11.18; 95% CI: 6.32–19.78) and a larger cutoff value (DOR = 14.06; 95% CI: 7.17–27.58).

To see if there are any covariates correlated to DOR, we performed metaregression. The factors included the following domains: the number of patients, age, male/female ratio, FC assay, cutoff value, and follow-up time. No significant correlation between the covariates and DOR was detected in the univariate metaregression analysis (Table 3).

3.5. Publication Bias Analysis. Deek's funnel plot asymmetry test was used to assess the publication bias of the included studies (Figure 5), and no obvious publication bias was detected ($P = 0.79$).

4. Discussion

The clinical course of UC is characterized by periods of remission with recurrent episodes of symptom exacerbation

because of acute intestinal inflammation [34]. Presently, UC remains an incurable disease, and the aim of existing treatments is to induce remission, promote the healing of the mucosal membrane, and decrease the incident of relapse [35]. Relapses in UC are hard to predict, and the identification of patients with a high risk of clinical flare-up could lead to target treatment at a presymptomatic stage. To better monitor the course of UC, FC has been proposed as a reliable biomarker for the prediction of possible relapse in patients with remission [36].

Our study revealed that FC yielded a good prediction value for the clinical relapse of UC (with a pooled sensitivity and specificity of 0.75, 95% CI: 0.70–0.79 and 0.77, 95% CI: 0.74–0.80, respectively). The maximum joint sensitivity and specificity was 0.76 (SE 0.025), with an AUC of 0.82 (SE 0.027). These findings are consistent with a previous meta-analysis [37].

No consensus has been reached for the definition of the clinical relapse of UC, and the criteria adopted in our studies

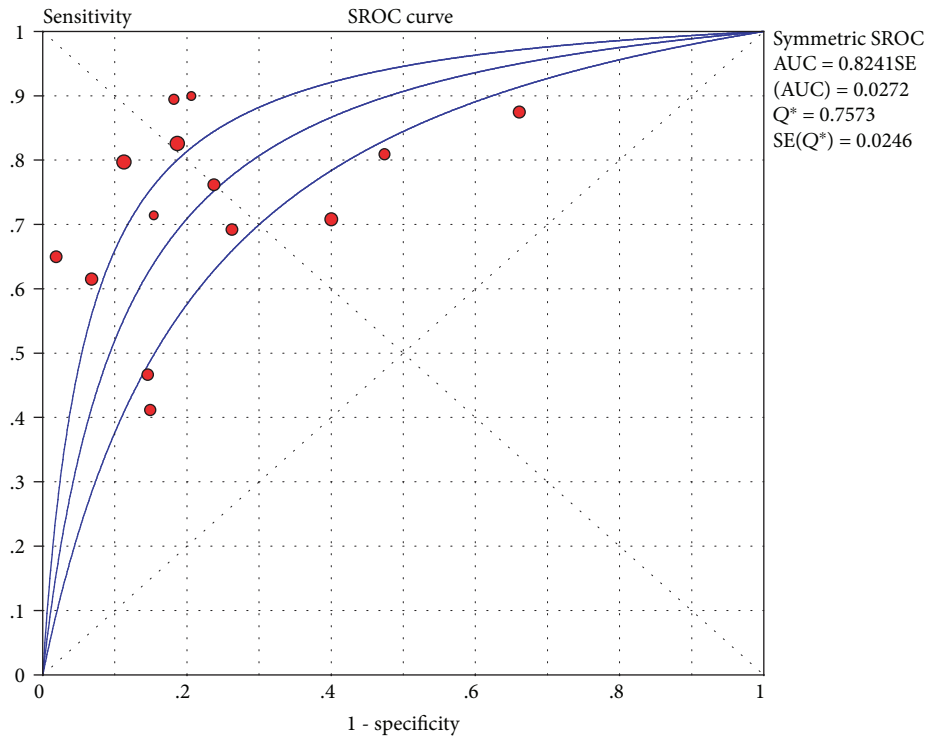


FIGURE 4: Symmetrical summary receiver operator curve (sROC) for all 14 studies. The size of the circle represents the sample size of each study included in the meta-analysis.

TABLE 3: Results of univariate meta-regression analysis of diagnostic odds ratio.

Covariables	P value	RDOR	95% CI
Number of patients ($\geq 80 / < 80$)	0.65	1.41	(0.24-8.31)
Mean age ($\geq 40 / < 40$)	0.68	0.69	(0.09-5.50)
Male/female ratio ($\geq 50\% / < 50\%$)	0.74	0.73	(0.08-6.77)
FC assay (Bühlmann/not Bühlmann)	0.80	1.25	(0.16-9.60)
Cutoff value ($\geq 150 \mu\text{g/g} / < 150 \mu\text{g/g}$)	0.68	1.50	(0.15-15.17)
Follow-up time ($\geq 1 \text{ y} / < 1 \text{ y}$)	0.92	0.85	(0.02-30.36)

RDOR, relative DOR.

were not identical. The basic criterion of clinical relapse is worsening of symptoms. Apart from that, other indices include TW score ≥ 11 [32, 33] and partial Mayo score ≥ 3 [20, 22, 23]; the others focused on the Mayo endoscopic subscore. This could be a source of heterogeneity. We noticed that the specificity in the study of Scaioli et al. [26] is extremely high (100%). This may result from the relatively loose relapsing standard set in the study. To date, the golden standard for assessing intestinal inflammation is histological examination [38]. A recent study conducted by Diamanti et al. validated that a FC value of $275 \mu\text{g/g}$ achieved sensitivity and negative predictive value of 97% and specificity and positive predictive value of 85% in predicting the histological

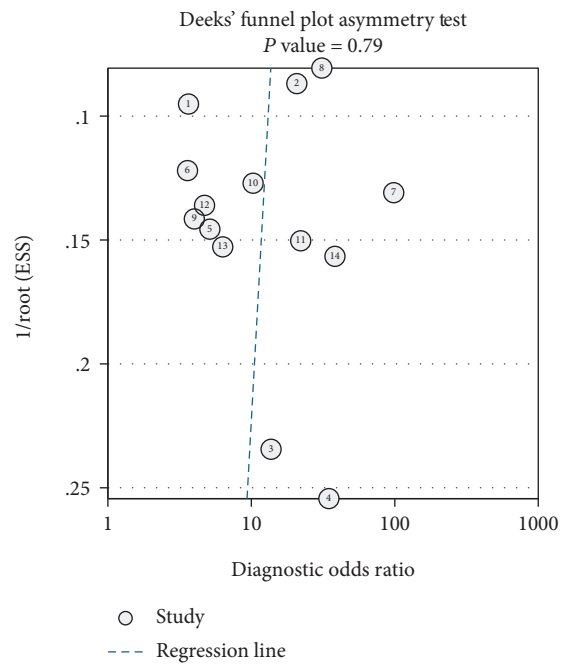


FIGURE 5: Deeks' funnel plot.

relapse of IBD [39]. Though using a histological standard could more accurately demonstrate the diagnostic value of FC, the clinical value of this study was limited, because histological relapse does not necessarily develop to clinical relapse and may not need adjustment of medication. Therefore, a

more accurate, well-recognized standard of clinical relapse should be established.

The FC value adopted in our analysis was the baseline value tested at enrollment. However, elevated FC is not synonymous to bowel inflammation and FC levels are subject to some day-to-day and diurnal variations. Thus, many studies held that consecutive fecal calprotectin measurements could better predict relapse in patients with UC [40]. De Vos et al. suggested that two consecutive measurements >300 mg/kg were more specific than a single measurement for predicting relapse [30]. Consecutive fecal calprotectin measurements can monitor the disease status. The possibility of clinical relapse is increased if the value of fecal calprotectin stays abnormal. So if patients can keep a regular outpatient visit during remission, we suggest that they take consecutive fecal calprotectin measurements.

Subgroup analysis shows that the diagnostic accuracy is higher in studies with longer follow-up time (≥ 1 year), compared with those with shorter follow-up time. This suggests that FC is more useful in predicting long-term outcome. Since the disease course of UC is chronic, this finding will help monitor UC patients in the long run.

Patients included in this analysis are restricted to adults. However, in clinical practice, pediatric UC patients make up an important part and are drawing daily increasing attention [41]. Relevant studies show that fecal calprotectin can also serve as an activity marker of IBD in children [42, 43]. Walkiewicz et al. found that among children with CD in remission, FC levels may be useful in predicting impending clinical relapse. In their study, eighty-nine percent of CD encounters with FC levels less than 400 $\mu\text{g/g}$ remained in clinical remission [44]. However, it has been reported that the reference ranges of FC in children are age-related and vary a lot [45]. Besides, the clinical characteristics differ a lot between pediatric and adult UC patients. Therefore, only articles restricted to adult patients were included in our meta-analysis. To demonstrate FC's role in predicting relapse in pediatric UC patients, more clinical studies should be conducted.

Recently, the quantitative fecal immunochemical test (FIT) is proposed as a surrogate method to predict relapse in ulcerative colitis [46, 47]. FIT holds several advantages over FC in regard to user friendliness, including a lower cost, easy and clean handling, and the ability to make rapid measurements by using an automated measurement system [48]. Moreover, studies confirmed that if FIT was applied together with FC and other biomarkers like CRP, the diagnostic accuracy would be significantly improved [49, 50]. However, the present data remains insufficient and further studies regarding the combination of FIT and FC for predicting relapse of UC are warranted.

5. Conclusion

Our results confirm the diagnostic utility of FC for the detection of UC relapse in adults. Due to its simplicity and noninvasiveness, measuring FC levels at clinical remission appears to be a reliable and reproducible indicator for predicting UC relapse. To further explore its utility, more well-designed

studies are required to confirm our results and find the best cutoff value of FC concentration to identify recurrence in UC patients with remission.

Disclosure

A part of the study's results was selected as a postpresentation in Abstracts Published Only, Journal of Digestive Diseases banner. The abstract was also presented at the 26th United European Gastroenterology Week Vienna 2018.

Conflicts of Interest

The authors declare that there is no conflict of interest regarding the publication of this article.

Authors' Contributions

Jiajia Li and Xiaojing Zhao contributed equally to this work.

Acknowledgments

This study was funded in full by the Natural Science Foundation of China, grant number 81770553.

References

- [1] J. Burisch, T. J. M. Martinato, P. L. Lakatos, and ECCO -Epi-Com, "The burden of inflammatory bowel disease in Europe," *Journal of Crohn's and Colitis*, vol. 7, no. 4, pp. 322–337, 2013.
- [2] M. D. Kappelman, S. L. Rifas-Shiman, K. Kleinman et al., "The prevalence and geographic distribution of Crohn's disease and ulcerative colitis in the United States," *Clinical Gastroenterology and Hepatology*, vol. 5, no. 12, pp. 1424–1429, 2007.
- [3] A. N. Ananthakrishnan, "Environmental risk factors for inflammatory bowel diseases: a review," *Digestive Diseases and Sciences*, vol. 60, no. 2, pp. 290–298, 2015.
- [4] D. N. Frank, A. L. St. Amand, R. A. Feldman, E. C. Boedeker, N. Harpaz, and N. R. Pac, "Molecular-phylogenetic characterization of microbial community imbalances in human inflammatory bowel diseases," *Proceedings of the National Academy of Sciences of the United States of America*, vol. 104, no. 34, pp. 13780–13785, 2007.
- [5] J. Cosnes, C. Gower-Rousseau, P. Seksik, and A. Cortot, "Epidemiology and natural history of inflammatory bowel diseases," *Gastroenterology*, vol. 140, no. 6, pp. 1785–1794.e4, 2011.
- [6] S. K. Bunn, W. M. Bisset, M. J. C. Main, E. S. Gray, S. Olson, and B. E. Golden, "Fecal calprotectin: validation as a noninvasive measure of bowel inflammation in childhood inflammatory bowel disease," *Journal of Pediatric Gastroenterology and Nutrition*, vol. 33, no. 1, pp. 14–22, 2001.
- [7] M. D. Kappelman, S. L. Rifas-Shiman, C. Q. Porter et al., "Direct health care costs of Crohn's disease and ulcerative colitis in US children and adults," *Gastroenterology*, vol. 135, no. 6, pp. 1907–1913, 2008.
- [8] V. Annesse, M. Daperno, M. D. Rutter et al., "European evidence based consensus for endoscopy in inflammatory bowel disease," *Journal of Crohn's and Colitis*, vol. 7, no. 12, pp. 982–1018, 2013.

- [9] G. Van Assche, A. Dignass, B. Bokemeyer et al., “Second European evidence-based consensus on the diagnosis and management of ulcerative colitis part 3: special situations,” *Journal of Crohn's and Colitis*, vol. 7, no. 1, pp. 1–33, 2013.
- [10] A. M. Schoepfer, C. Beglinger, A. Straumann et al., “Fecal calprotectin more accurately reflects endoscopic activity of ulcerative colitis than the Lichtiger Index, C-reactive protein, platelets, hemoglobin, and blood leukocytes,” *Inflammatory Bowel Diseases*, vol. 19, no. 2, pp. 332–341, 2013.
- [11] E. Krzesiek and B. Iwańczak, “Assessment of fecal calprotectin concentration as inflammatory marker in inflammatory bowel diseases in children—preliminary report,” *Polski merkuriusz lekarski: organ Polskiego Towarzystwa Lekarskiego*, vol. 29, no. 172, pp. 241–246, 2010.
- [12] J. Langhorst, S. Elsenbruch, J. Koelzer, A. Rueffer, A. Michalsen, and G. J. Dobos, “Noninvasive markers in the assessment of intestinal inflammation in inflammatory bowel diseases: performance of fecal lactoferrin, calprotectin, and PMN-elastase, CRP, and clinical indices,” *The American Journal of Gastroenterology*, vol. 103, no. 1, pp. 162–169, 2008.
- [13] P. F. van Rhee, E. Van de Vijver, and V. Fidler, “Faecal calprotectin for screening of patients with suspected inflammatory bowel disease: diagnostic meta-analysis,” *BMJ*, vol. 341, no. jul15 1, p. c3369, 2010.
- [14] D. Moher, A. Liberati, J. Tetzlaff, D. G. Altman, and for the PRISMA Group, “Preferred reporting items for systematic reviews and meta-analyses: the PRISMA statement,” *BMJ*, vol. 339, no. jul21 1, p. b2535, 2009.
- [15] P. F. Whiting, M. E. Weswood, A. W. S. Rutjes, J. B. Reitsma, P. N. M. Bossuyt, and J. Kleijnen, “Evaluation of QUADAS, a tool for the quality assessment of diagnostic accuracy studies,” *BMC Medical Research Methodology*, vol. 6, no. 1, 2006.
- [16] L. E. Moses, D. Shapiro, and B. Littenberg, “Combining independent studies of a diagnostic test into a summary ROC curve: data-analytic approaches and some additional considerations,” *Statistics in Medicine*, vol. 12, no. 14, pp. 1293–1316, 1993.
- [17] J. P. Higgins, S. G. Thompson, J. J. Deeks, and D. G. Altman, “Measuring inconsistency in meta-analyses,” *BMJ*, vol. 327, no. 7414, pp. 557–560, 2003.
- [18] N. Mantel and W. Haenszel, “Statistical Aspects of the Analysis of Data From Retrospective Studies of Disease,” *JNCI: Journal of the National Cancer Institute*, vol. 22, no. 4, pp. 719–748, 1959.
- [19] J. J. Deeks, P. Macaskill, and L. Irwig, “The performance of tests of publication bias and other sample size effects in systematic reviews of diagnostic test accuracy was assessed,” *Journal of Clinical Epidemiology*, vol. 58, no. 9, pp. 882–893, 2005.
- [20] A. Nakarai, S. Hiraoka, S. Takahashi et al., “Simultaneous measurements of faecal calprotectin and the faecal immunochemical test in quiescent ulcerative colitis patients can stratify risk of relapse,” *Journal of Crohn's and colitis*, vol. 12, no. 1, pp. 71–76, 2018.
- [21] T. Yamamoto, T. Shimoyama, S. Umegae, and K. Matsumoto, “Endoscopic score vs. fecal biomarkers for predicting relapse in patients with ulcerative colitis after clinical remission and mucosal healing,” *Clinical and Translational Gastroenterology*, vol. 9, no. 3, p. 136, 2018.
- [22] A. H. Keshteli, F. F. van den Brand, K. L. Madsen et al., “Dietary and metabolomic determinants of relapse in ulcerative colitis patients: a pilot prospective cohort study,” *World Journal of Gastroenterology*, vol. 23, no. 21, pp. 3890–3899, 2017.
- [23] R. Ferreiro-Iglesias, M. Barreiro-de Acosta, M. Otero Santiago et al., “Fecal calprotectin as predictor of relapse in patients with inflammatory bowel disease under maintenance infliximab therapy,” *Journal of Clinical Gastroenterology*, vol. 50, no. 2, pp. 147–151, 2016.
- [24] K. Theede, S. Holck, P. Ibsen, T. Kallemose, I. Nordgaard-Lassen, and A. M. Nielsen, “Fecal calprotectin predicts relapse and histological mucosal healing in ulcerative colitis,” *Inflammatory Bowel Diseases*, vol. 22, no. 5, pp. 1042–1048, 2016.
- [25] S. V. Hosseini, P. Jafari, S. A. Taghavi et al., “Fecal calprotectin is an accurate tool and correlated to Seo index in prediction of relapse in Iranian patients with ulcerative colitis,” *Iranian Red Crescent Medical Journal*, vol. 17, no. 2, 2015.
- [26] E. Scaiola, M. Scagliarini, C. Cardamone et al., “Clinical application of faecal calprotectin in ulcerative colitis patients,” *European Journal of Gastroenterology & Hepatology*, vol. 27, no. 12, pp. 1418–1424, 2015.
- [27] T. Yamamoto, T. Shimoyama, and K. Matsumoto, “Consecutive monitoring of faecal calprotectin during mesalazine suppository therapy for active rectal inflammation in ulcerative colitis,” *Alimentary Pharmacology and Therapeutics*, vol. 42, no. 5, pp. 549–558, 2015.
- [28] A. Jauregui-Amezaga, M. López-Cerón, M. Aceituno et al., “Accuracy of advanced endoscopy and fecal calprotectin for prediction of relapse in ulcerative colitis: a prospective study,” *Inflammatory Bowel Diseases*, vol. 20, no. 7, pp. 1187–1193, 2014.
- [29] T. Yamamoto, M. Shiraki, T. Bamba, S. Umegae, and K. Matsumoto, “Fecal calprotectin and lactoferrin as predictors of relapse in patients with quiescent ulcerative colitis during maintenance therapy,” *International Journal of Colorectal Disease*, vol. 29, no. 4, pp. 485–491, 2014.
- [30] M. De Vos, E. J. Louis, J. Jahnsen et al., “Consecutive Fecal Calprotectin Measurements to Predict Relapse in Patients with Ulcerative Colitis Receiving Infliximab Maintenance Therapy,” *Inflammatory Bowel Diseases*, vol. 19, no. 10, pp. 2111–2117, 2013.
- [31] F. Costa, M. G. Mumolo, L. Ceccarelli et al., “Calprotectin is a stronger predictive marker of relapse in ulcerative colitis than in Crohn's disease,” *Gut*, vol. 54, no. 3, pp. 364–368, 2005.
- [32] J. P. Gisbert, F. Bermejo, J. L. Pérez-Calle et al., “Fecal calprotectin and lactoferrin for the prediction of inflammatory bowel disease relapse,” *Inflammatory Bowel Diseases*, vol. 15, no. 8, pp. 1190–1198, 2009.
- [33] V. García-Sánchez, E. Iglesias-Flores, R. González et al., “Does fecal calprotectin predict relapse in patients with Crohn's disease and ulcerative colitis?,” *Journal of Crohn's and colitis*, vol. 4, no. 2, pp. 144–152, 2010.
- [34] I. C. Solberg, I. Lygren, J. Jahnsen et al., “Clinical course during the first 10 years of ulcerative colitis: results from a population-based inception cohort (IBSEN Study),” *Scandinavian Journal of Gastroenterology*, vol. 44, no. 4, pp. 431–440, 2009.
- [35] J. Casati, B. B. Toner, E. C. de Rooy, D. A. Drossman, and R. G. Maunder, “Concerns of patients with inflammatory bowel disease—a review of emerging themes,” *Digestive Diseases and Sciences*, vol. 45, no. 1, pp. 26–31, 2000.
- [36] F. S. Lehmann, E. Burri, and C. Beglinger, “The role and utility of faecal markers in inflammatory bowel disease,” *Therapeutic Advances in Gastroenterology*, vol. 8, no. 1, pp. 23–36, 2014.
- [37] R. Mao, Y. L. Xiao, X. Gao et al., “Fecal calprotectin in predicting relapse of inflammatory bowel diseases: a meta-analysis of

- prospective studies," *Inflammatory Bowel Diseases*, vol. 18, no. 10, pp. 1894–1899, 2012.
- [38] A. Bitton, M. A. Peppercorn, D. A. Antonioli et al., "Clinical, biological, and histologic parameters as predictors of relapse in ulcerative colitis," *Gastroenterology*, vol. 120, no. 1, pp. 13–20, 2001.
- [39] A. Diamanti, F. Colistro, M. S. Basso et al., "Clinical role of calprotectin assay in determining histological relapses in children affected by inflammatory bowel diseases," *Inflammatory Bowel Diseases*, vol. 14, no. 9, pp. 1229–1235, 2008.
- [40] Y. Zhulina, Y. Cao, K. Amcoff, M. Carlson, C. Tysk, and J. Halfvarson, "P430. Prognostic significance of serial faecal calprotectin in inflammatory bowel disease," *Journal of Crohn's and Colitis*, vol. 10, pp. S315–S318, 2016.
- [41] E. I. Benchimol, K. J. Fortinsky, P. Gozdyra, M. Van den Heuvel, J. Van Limbergen, and A. M. Griffiths, "Epidemiology of pediatric inflammatory bowel disease: a systematic review of international trends," *Inflammatory Bowel Diseases*, vol. 17, no. 1, pp. 423–439, 2011.
- [42] E. Krzesiek, "Fecal Calprotectin as an activity marker of inflammatory bowel disease in children," *Advances in Clinical and Experimental Medicine*, vol. 24, no. 5, pp. 815–822, 2015.
- [43] R. Berni Canani, L. Rapacciuolo, M. T. Romano et al., "Diagnostic value of faecal calprotectin in paediatric gastroenterology clinical practice," *Digestive and Liver Disease*, vol. 36, no. 7, pp. 467–470, 2004.
- [44] D. Walkiewicz, S. L. Werlin, D. Fish, M. Scanlon, P. Hanaway, and S. Kugathasan, "Fecal calprotectin is useful in predicting disease relapse in pediatric inflammatory bowel disease," *Inflammatory Bowel Diseases*, vol. 14, no. 5, pp. 669–673, 2008.
- [45] S. Joshi, S. J. Lewis, S. Creanor, and R. M. Ayling, "Age-related faecal calprotectin, lactoferrin and tumour M2-PK concentrations in healthy volunteers," *Annals of Clinical Biochemistry*, vol. 47, no. 3, pp. 259–263, 2010, Pt 3.
- [46] J. Kato, S. Hiraoka, A. Nakarai, S. Takashima, T. Inokuchi, and M. Ichinose, "Fecal immunochemical test as a biomarker for inflammatory bowel diseases: can it rival fecal calprotectin?," *Intestinal Research*, vol. 14, no. 1, pp. 5–14, 2016.
- [47] S. Hiraoka, J. Kato, A. Nakarai et al., "1075 Consecutive Measurements by Fecal Immunochemical Test in Quiescent Ulcerative Colitis Patients Can Detect Subclinical Relapse," *Gastroenterology*, vol. 150, no. 4, p. S213, 2016.
- [48] A. Nakarai, J. Kato, S. Hiraoka et al., "Ulcerative colitis patients in clinical remission demonstrate correlations between fecal immunochemical test results, mucosal healing, and risk of relapse," *World Journal of Gastroenterology*, vol. 22, no. 21, pp. 5079–5087, 2016.
- [49] S. Hiraoka, J. Kato, A. Nakarai et al., "Consecutive measurements by faecal immunochemical test in quiescent ulcerative colitis patients can detect clinical relapse," *Journal of Crohns and Colitis*, vol. 10, no. 6, pp. 687–694, 2016.
- [50] A. G. L. Bodelier, D. Jonkers, T. van den Heuvel et al., "High percentage of IBD patients with indefinite fecal calprotectin levels: additional value of a combination score," *Digestive Diseases and Sciences*, vol. 62, no. 2, pp. 465–472, 2017.