

Original Article
Ophthalmology



Relationship between Clinical Features of Diabetic Retinopathy and Systemic Factors in Patients with Newly Diagnosed Type II Diabetes Mellitus

Hyeseong Hwang ,^{1*} Jin Young Kim ,^{2*} Tae Keun Oh ,³ Ju Byung Chae ,¹ and Dong Yoon Kim ¹

¹Department of Ophthalmology, Chungbuk National University Hospital, Chungbuk National University College of Medicine, Cheongju, Korea

²Department of Ophthalmology, Jeju National University Hospital, Jeju National University School of Medicine, Jeju, Korea

³Department of Internal Medicine, Chungbuk National University Hospital, Chungbuk National University College of Medicine, Cheongju, Korea

OPEN ACCESS

Received: Jan 9, 2020

Accepted: Apr 13, 2020

Address for Correspondence:

Dong Yoon Kim, MD, PhD

Department of Ophthalmology, Chungbuk National University Hospital, Chungbuk National University College of Medicine, 776, 1Sunhwan-ro, Seowon-gu, Cheongju 28644, Republic of Korea.

E-mail: umlover9@gmail.com

*Hyeseong Hwang and Jin Young Kim contributed equally to this work.

© 2020 The Korean Academy of Medical Sciences.

This is an Open Access article distributed under the terms of the Creative Commons Attribution Non-Commercial License (<https://creativecommons.org/licenses/by-nc/4.0/>) which permits unrestricted non-commercial use, distribution, and reproduction in any medium, provided the original work is properly cited.

ORCID iDs

Hyeseong Hwang

<https://orcid.org/0000-0002-4648-7083>

Jin Young Kim

<https://orcid.org/0000-0001-6204-9537>

Tae Keun Oh

<https://orcid.org/0000-0002-2998-9671>

Ju Byung Chae

<https://orcid.org/0000-0002-5233-0373>

Dong Yoon Kim

<https://orcid.org/0000-0002-6058-0145>

ABSTRACT

Background: We investigated the relationship between clinical features of diabetic retinopathy (DR) and systemic factors in patients with newly diagnosed type II diabetes mellitus (T2DM).

Methods: Retrospective review of newly diagnosed T2DM-patients who underwent complete ophthalmic examinations at the time of T2DM diagnosis were conducted. We reviewed DM related systemic factor data and investigated systemic factors related to the presence of DR at T2DM diagnosis. In DR patients, the relationship between DR severity and systemic factors was analyzed.

Results: Of 380 patients, forty (10.53%) patients had DR at the initial ophthalmologic examination. Glycated hemoglobin (HbA_{1c}), fasting plasma glucose (FPG), urine albumin to creatinine ratio (UACR), and urine microalbumin level were significantly higher in DR patients than in patients without DR. In the multivariate logistic regression analysis, high HbA_{1c} was a significant risk factor for the presence of DR at new T2DM diagnosis (odds ratio, 2.372; $P < 0.001$). HbA_{1c}, FPG, UACR, and urine microalbumin level showed significantly positive correlations with DR severity.

Conclusion: In patients with newly diagnosed T2DM, 10.53% have DR at initial ophthalmologic examination and high HbA_{1c}, FPG, UACR and urine microalbumin levels. These factors are significantly positively correlated with DR severity. Therefore, more careful fundus examination is needed for newly diagnosed T2DM patients with high HbA_{1c}, FPG, UACR, and urine microalbumin levels.

Keywords: Diabetic Retinopathy; Type 2 Diabetes Mellitus; First Diagnosis; HbA_{1c}; Fasting Plasma Glucose; Urine Microalbumin; Urine Albumin to Creatinine Ratio

INTRODUCTION

Diabetic retinopathy (DR) is a chronic microvascular complication of diabetes mellitus (DM) and can sometimes present as the first manifestation of diabetic complications.^{1,2}

Disclosure

The authors have no potential conflicts of interest to disclose.

Author Contributions

Conceptualization: Kim JY, Kim DY; Data curation: Hwang H, Kim DY; Formal analysis: Hwang H, Kim DY; Investigation: Hwang H, Kim JY, Kim DY; Methodology: Hwang H, Kim JY, Kim DY; Supervision: Kim DY; Validation: Kim KY; Writing - original draft: Hwang H, Kim DY; Writing - review & editing: Kim JY, Oh TK, Chae JB, Kim DY.

Approximately 35% of patients with DM will develop DR, and of these, 20% will progress to proliferative diabetic retinopathy (PDR).³ DR is the most common cause of moderate and severe vision loss in working-aged adults.⁴ Vision loss owing to DR not only lowers patients' quality of life, it also limits the ability of patients to take care of their own disease, which can eventually lead to diabetes-related mortality.^{5,6}

DR is a complex and multifactorial disease, characterized by variable clinical features and courses.⁷ Well-known risk factors associated with DR development are the duration of diabetes, glycated hemoglobin (HbA_{1c}) level, systolic blood pressure, low body mass index (BMI), and total cholesterol.^{3,8-10} In addition, genetic factors have recently been linked to risk of DR.¹¹ Of the various known factors, the key risk factor for DR development is the duration of DM. The prevalence of DR is strongly associated with the duration of DM.³ A total 40%–60% of patients with duration of diabetes over 20 years have DR and 10% have a sight-threatening lesion.¹²

However, in patients with newly diagnosed type II DM (T2DM), the duration of DM is unknown. In fact, T2DM may have recently developed in these patients, or it may have gone undetected for a long time. In cases that the duration of diabetes cannot be determined, knowing the characteristics of the systemic factors associated with the clinical manifestation of DR in newly diagnosed DM might provide meaningful clinical information to ophthalmologists and diabetologists. Therefore, in this study, we aimed to investigate the clinical features of DR in patients with newly diagnosed DM and determine which baseline systemic factors are associated with the presence of DR at the time of T2DM diagnosis.

METHODS

We retrospectively reviewed the medical records of patients newly diagnosed with T2DM at Chungbuk National University Hospital, Cheongju, Korea between January 2013 and January 2018.

The primary objective of this study was to determine the frequency of patients with a new diagnosis of T2DM who had DR. The secondary objectives were to analyze 1) which systemic factors were related to the presence of DR at the time of T2DM diagnosis, 2) the relationship between the severity of DR and systemic factors; and 3) the baseline risk factors associated with progression of DR after T2DM diagnosis.

The inclusion criteria were patients 1) newly diagnosed with T2DM and 2) who visited the ophthalmology clinic within 1 month after T2DM diagnosis. The exclusion criteria were 1) DM owing to secondary causes, such as pancreas removal, 2) history of vitrectomy or scleral buckle, 3) other retinal vascular diseases that could affect the grade of DR, 4) patients with uncontrolled hypertension, 5) history of anti-vascular endothelial growth factor (VEGF) treatment for other retinal diseases, 6) history of uveitis or chorioretinal infection, and 7) fundus image of poor quality owing to a vitreous hemorrhage or cataract.

Ophthalmic examinations

At the initial visit, all patients underwent a complete bilateral ophthalmic examination, including best corrected visual acuity (BCVA) using the Snellen chart, applanation tonometry, slit lamp examination, dilated fundus examination, color fundus photography, and spectral

domain-optical coherence tomography (SD-OCT). BCVA results were converted to the logMAR scale. During a follow-up visit, ophthalmic examinations were conducted that included BCVA measurement, applanation tonometry, slit lamp examination, dilated fundus examinations, fundus photography, and SD-OCT.

DR grading

The severity of DR was stratified into levels ranging from no DR to high-risk PDR on the basis of the Early Treatment Diabetic Retinopathy Study (ETDRS) classification using 7 stereoscopic pairs of photographs per eye (ETDRS 7 standard fields).^{13,14} The DR severity scale used was as follows: no DR (level 10–12); mild non-proliferative diabetic retinopathy (NPDR, level 35); moderate NPDR (level 43); severe NPDR (level 47–53); very severe NPDR (level 53E); PDR (level 60–65); and high-risk PDR (level 71–75). In the cases with different stage of DR in both eyes, the level of retinopathy was graded based on the worse eye.

We also classified patients with T2DM according to the presence of DR at the time of T2DM diagnosis. At the initial visit, patients with DR were classified into the DR group and those with no DR were classified into the no diabetic retinopathy (NDR) group. If DR severity worsened more than two levels or worsened from no PDR to PDR during follow-up, it was defined as DR progression.¹⁵

Physical and laboratory examinations

All examinations were performed within 1 month after the first diagnosis of T2DM. Physical examination data were collected, including blood pressure, height, and weight. BMI was calculated as weight in kilograms divided by height in meters squared (kg/m^2). A venous blood sample was drawn from an antecubital vein in the morning after more than 8 hours of fasting to determine total cholesterol, triglyceride, fasting plasma glucose (FPG) levels, and HbA_{1c} concentrations. Urine tests were also performed, and the urine albumin to creatinine ratio (UACR) and urine microalbumin level were used in the analysis. All measurements were performed at the department of diagnostic testing of Chungbuk National University Hospital, using commercially available assays.

Statistical analysis

IBM SPSS version 22.0 software (IBM Corp., Armonk, NY, USA) was used to perform the statistical analysis, and $P < 0.05$ was set to indicate statistical significance. An independent t -test was used for the comparison of continuous variables between the two groups, and the Pearson χ^2 test was used for comparing categorical variables between the two groups. Multivariate logistic regression analysis was performed to determine the relationship between the presence of DR and systemic factors. We used Spearman correlation analysis to examine the relationship between severity of DR and systemic factors. We conducted Cox regression analysis to determine the risk factors associated with progression of DR.

Ethics statement

This study was approved by the Institutional Review Board (IRB) of Chungbuk National University Hospital (approval No. 2018-05-001) and was conducted in accordance with the tenets of the Declaration of Helsinki. This retrospective medical record reviewing research involved no more than minimal risk to the subjects. Therefore, the IRB gave exemption of the requirement for obtaining informed consent.

RESULTS

A total 380 patients were included in this study. Among 380 patients, 10.53% (40 patients) were diagnosed with DR within 1 month after a new diagnosis of T2DM. In the DR group, HbA_{1c} ($10.17\% \pm 1.82\%$ vs. $7.34\% \pm 1.37\%$, $P < 0.001$), FPG (219.15 ± 81.81 mg/dL vs. 146.33 ± 50.74 mg/dL, $P < 0.001$), UACR (94.12 ± 176.05 mg/g vs. 34.70 ± 90.37 mg/g, $P = 0.001$), and urine microalbumin level (107.54 ± 186.23 µg/mL vs. 43.81 ± 112.82 µg/mL, $P = 0.002$) were significantly higher than in the NDR group. However, there were no significant differences in age, gender, body weight, BMI, blood pressure, history of coronary artery disease, history of stroke, alcohol use, smoking, estimated glomerular filtration rate (eGFR), serum creatinine, and lipid profile according to the presence of DR at the time of T2DM diagnosis (Table 1).

Systemic factors related to the presence of DR at the time of type 2 diabetes diagnosis

To determine which systemic factors were related to the presence of DR at the time of T2DM diagnosis, we performed multivariate logistic analysis. We found that high HbA_{1c} level was the only systemic factor related to the presence of DR at the time of T2DM diagnosis (odds ratio [OR], 2.372; 95% confidence interval [CI], 1.891–2.976; $P < 0.001$).

Systemic factors related to the severity of DR at the time of type 2 diabetes diagnosis

Regarding the association between severity of DR and systemic factors in patients with DR at the time of T2DM diagnosis, Spearman correlation revealed that HbA_{1c}, FPG, UACR, and urine microalbumin level were positively correlated with DR severity at the time of T2DM diagnosis (Fig. 1). Figs. 2-4 show representative cases for the positive correlation of DR

Table 1. Comparison of characteristics according to DR status at first visit

Characteristics	Without DR	DR	P value
No. of patients	340	40	
Age, yr	51.61 ± 12.48	50.78 ± 10.21	0.682 ^a
Men/women, %	57.94/42.16	60.00/40.00	0.866 ^b
Body weight, kg	71.23 ± 13.82	69.60 ± 11.90	0.475 ^a
BMI, kg/m ²	26.38 ± 4.19	25.45 ± 3.89	0.184 ^a
HbA _{1c} , %	7.34 ± 1.37	10.17 ± 1.82	< 0.001 ^a
FPG, mg/dL	146.33 ± 50.74	219.15 ± 81.81	< 0.001 ^a
Cholesterol, mg/dL	180.50 ± 44.40	173.13 ± 43.37	0.320 ^a
Triglyceride, mg/dL	160.61 ± 94.19	153.18 ± 104.94	0.641 ^a
HDL cholesterol, mg/dL	48.81 ± 14.18	45.13 ± 11.97	0.116 ^a
LDL cholesterol, mg/dL	106.96 ± 40.08	104.53 ± 41.33	0.717 ^a
UACR, mg/g	34.70 ± 90.37	94.12 ± 176.05	0.001 ^a
Urine microalbumin, µg/mL	43.81 ± 112.82	107.54 ± 186.23	0.002 ^a
Serum creatinine, mg/dL	0.77 ± 0.21	0.76 ± 0.28	0.783 ^a
eGFR, mL/min/1.73 m ²	160.61 ± 94.19	153.18 ± 104.94	0.286 ^a
Systolic blood pressure, mmHg	110.39 ± 36.93	117.06 ± 40.36	0.557 ^a
Diastolic blood pressure, mmHg	78.37 ± 10.84	77.83 ± 8.62	0.758 ^a
Hypertension medication, %	67.94/32.06	77.50/22.50	0.279 ^b
Coronary artery disease, %	9.71/90.29	7.50/92.50	1.000 ^b
Stroke, %	7.06/92.94	12.50/87.50	0.212 ^b
Insulin/OHA/diet only, %	11.2/85.0/3.8	27.5/73.5/0.0	0.008 ^b
Current/former/never alcohol use, %	46.2/12.9/40.9	45.0/12.5/42.5	0.879 ^b
Current/former/never smoker, %	30.0/15.3/54.7	37.5/7.5/55.0	0.340 ^b

DR = diabetic retinopathy, BMI = body mass index, eGFR = estimated glomerular filtration rate, HDL = high-density lipoprotein, LDL = low-density lipoprotein, OHA = oral hypoglycemic agent, HbA_{1c} = glycated hemoglobin, FPG = fasting plasma glucose, UACR = urine albumin to creatinine ratio.

^aIndependent t-test; ^bPearson χ^2 test.

grade and systemic factors. Fig. 2 shows the case of a 55-year-old woman with high HbA_{1c} levels at the first diagnosis of T2DM. HbA_{1c} was 11.6%, UACR was 117.30 mg/g, and urine

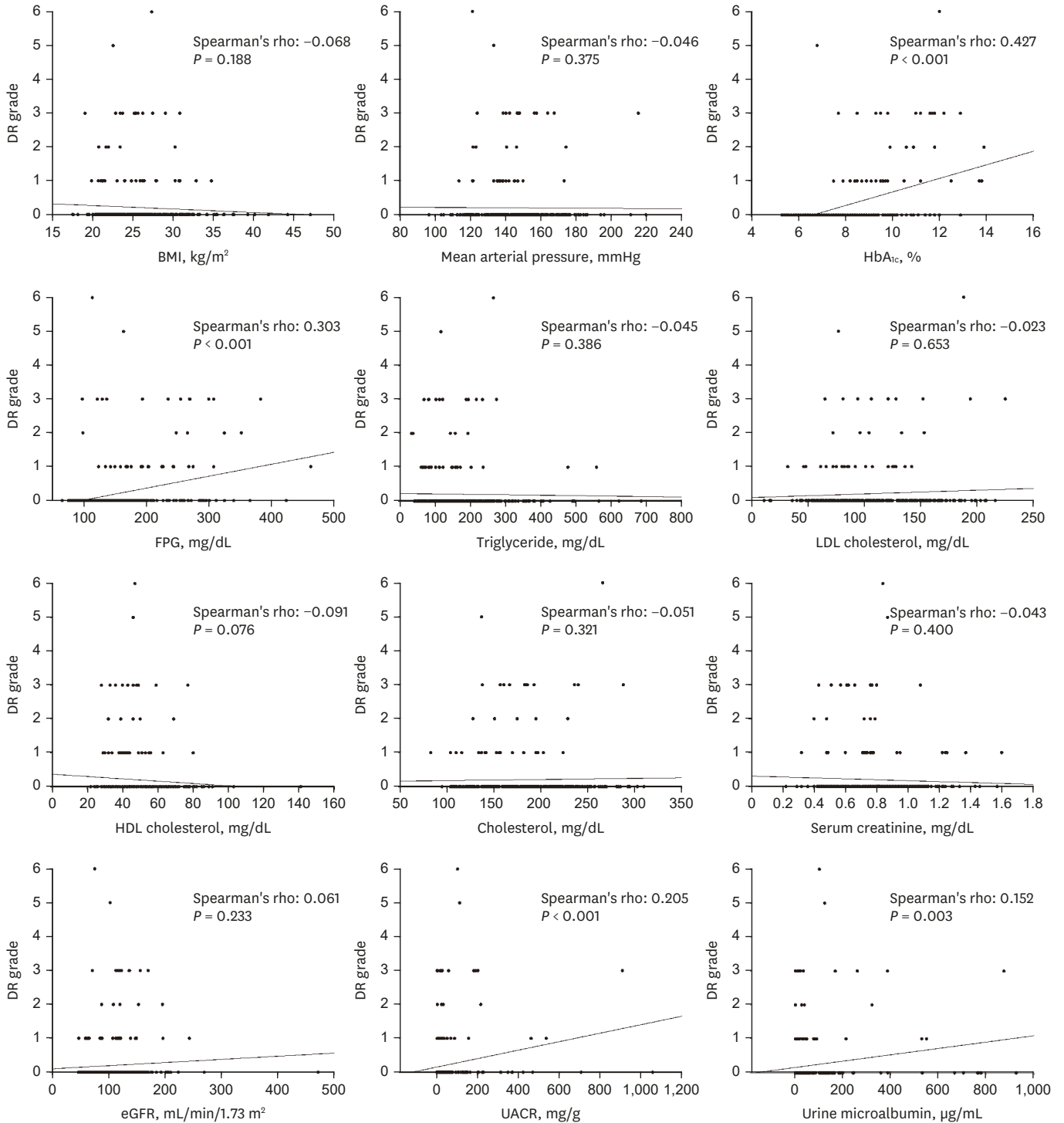


Fig. 1. The correlation between the DR grade and laboratory exams. There was a significant positive correlation between the DR grade and HbA_{1c}, FPG, UACR and urine microalbumin level. Of the relevant factors, Spearman's rho was the largest in HbA_{1c}. DR = diabetic retinopathy, HbA_{1c} = glycated hemoglobin, FPG = fasting plasma glucose, UACR = urine albumin to creatinine ratio, eGFR = estimated glomerular filtration rate, HDL = high-density lipoprotein, LDL = low-density lipoprotein, BMI = body mass index.

microalbumin was 113.40 $\mu\text{g}/\text{mL}$ at T2DM diagnosis. Fundus examination and fluorescein angiography revealed multiple new vessels in both eyes and tractional retinal detachment in the left eye. For the right eye, panretinal photocoagulation was conducted and vitrectomy was done for the left eye. **Fig. 3** shows the case of a 49-year-old woman with moderate $\text{HbA}_{1\text{C}}$ levels at the first diagnosis of T2DM; $\text{HbA}_{1\text{C}}$ was 8.50%, UACR was 58.70 mg/g, and urine microalbumin was 19.00 $\mu\text{g}/\text{mL}$. In the fundus examination, both eyes were classified as very severe NPDR. Both eyes were treated with panretinal photocoagulation, and the patient underwent regular follow-up. **Fig. 4** shows the case of a 48-year-old woman with low $\text{HbA}_{1\text{C}}$ levels at the first diagnosis of T2DM; $\text{HbA}_{1\text{C}}$ was 7.10%, UACR was 6.10 mg/g, and urine microalbumin was 7.50 $\mu\text{g}/\text{mL}$. In the examination, both eyes were classified as no DR.

The average follow-up period for all patients was 23.49 ± 8.28 months. Regarding risk factors for progression of DR more than two grades during follow-up, Cox regression analysis revealed that there were no statistically significant factors associated with progression of DR of more than two levels (**Table 2**).

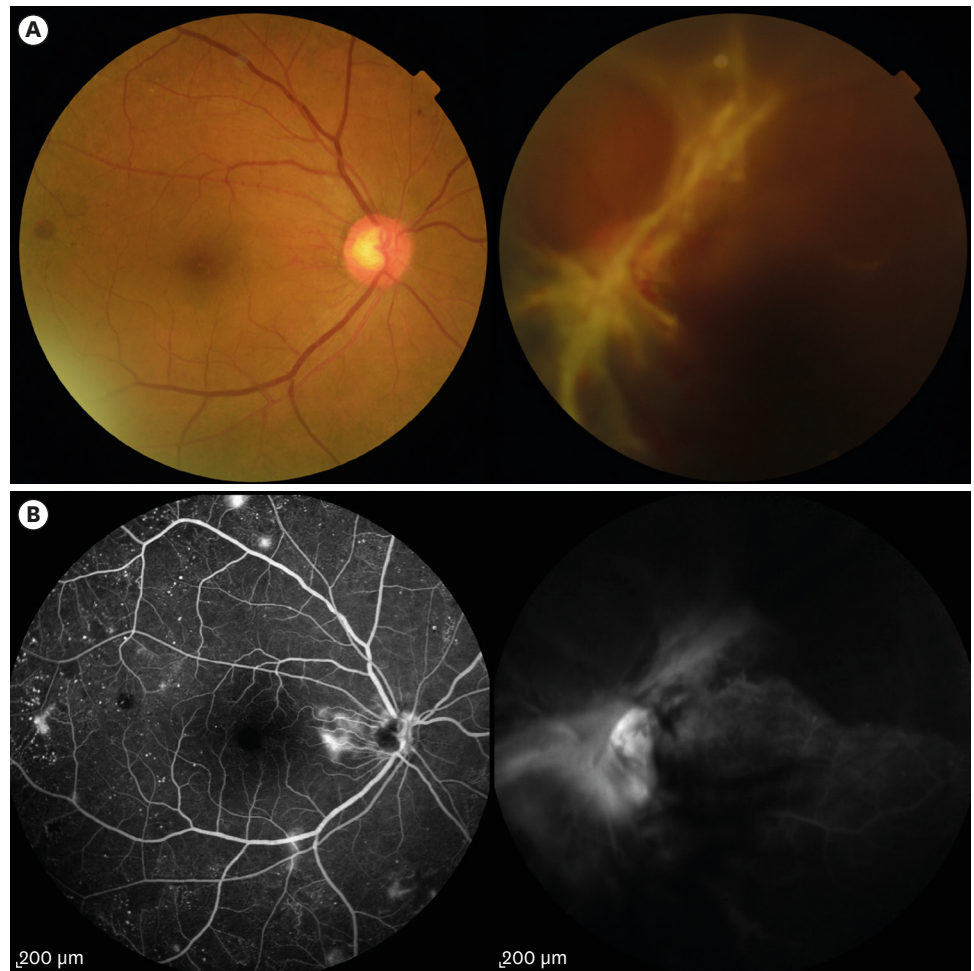


Fig. 2. A case of a patient with high level of $\text{HbA}_{1\text{C}}$ at the first diagnosis of T2DM. Fifty-five-year-old woman with high level of $\text{HbA}_{1\text{C}}$ at the first diagnosis of T2DM. $\text{HbA}_{1\text{C}}$ was 11.6%, UACR was 117.30 mg/g Cr and urine microalbumin was 113.40 $\mu\text{g}/\text{mL}$ at the first diagnosis of T2DM. Fundus examination (A) and fluorescein angiography (B) revealed multiple new vessels on both eyes and tractional retinal detachment in the left eye. $\text{HbA}_{1\text{C}}$ = glycated hemoglobin, T2DM = type II diabetes mellitus, UACR = urine albumin to creatinine ratio.

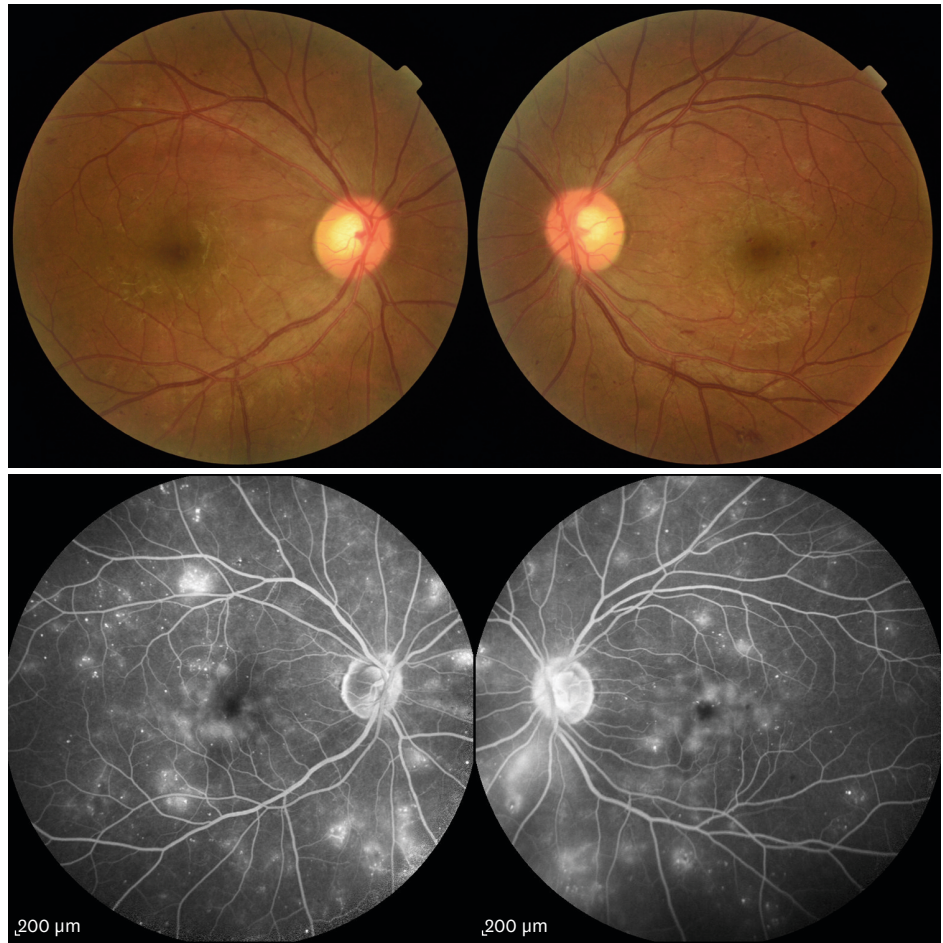


Fig. 3. A case of a patient with moderate level of HbA_{1c} at the first diagnosis of T2DM. Forty-nine-year-old woman with moderate level of HbA_{1c} at the first diagnosis of T2DM. HbA_{1c} was 8.50%, UACR was 58.70 mg/g and urine microalbumin was 19.00 μg/mL at the first diagnosis of T2DM. In the DR exam, both eyes were classified as severe NPDR. HbA_{1c} = glycated hemoglobin, T2DM = type II diabetes mellitus, UACR = urine albumin to creatinine ratio, DR = diabetic retinopathy, NPDR = non-proliferative diabetic retinopathy.

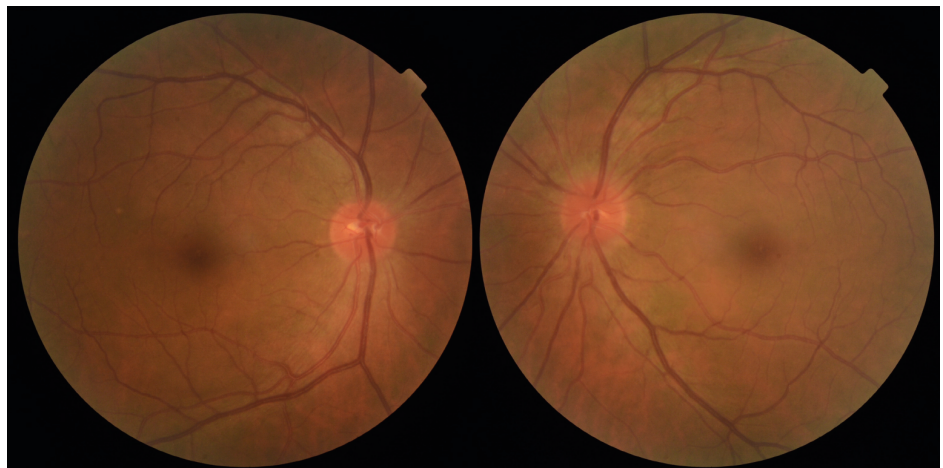


Fig. 4. A case of a patient with low of HbA_{1c} at the first diagnosis of T2DM. Forty-eight-year-old woman with low level of HbA_{1c} at the first diagnosis of T2DM. HbA_{1c} was 7.10%, UACR was 6.10 mg/g and urine microalbumin was 7.50 μg/mL at the first diagnosis of T2DM. In the DR exam, both eyes were classified as NDR. HbA_{1c} = glycated hemoglobin, T2DM = type II diabetes mellitus, UACR = urine albumin to creatinine ratio, DR = diabetic retinopathy, NDR = no diabetic retinopathy.

Table 2. Univariate Cox proportional hazards models for predicting the progression of DR

Variables	HR	P value ^a
Age, yr	0.869	0.559
Men:women	0.087	0.771
Body weight, kg	0.962	0.962
BMI, kg/m ²	0.741	0.788
HbA _{1c} , %	3.245	0.389
FPG, mg/dL	1.032	0.191
Cholesterol, mg/dL	0.952	0.817
Triglyceride, mg/dL	1.021	0.529
HDL cholesterol, mg/dL	1.044	0.836
LDL cholesterol, mg/dL	1.025	0.908
UACR, mg/g	1.029	0.608
Urine microalbumin, µg/mL	0.983	0.778
Serum creatinine, mg/dL	0.000	0.518
eGFR, mL/min/1.73 m ²	0.849	0.486
Systolic blood pressure, mmHg	1.048	0.711
Diastolic blood pressure, mmHg	0.807	0.368
Hypertension medication, %	43.479	0.242
Coronary artery disease, %	0.278	0.864
Stroke, %	0.263	0.885
Insulin/OHA/diet only, %	1.000/1.509/8.330	0.917/0.999/0.992
Current/former/never alcohol use, %	1.000/0.457/1.607	0.975/0.862/0.894
Current/former/never smoker, %	1.000/1.358/0.470	0.952/0.825/0.771

DR = diabetic retinopathy, HR = hazard ratio, HDL = high-density lipoprotein, LDL = low-density lipoprotein, eGFR = estimated glomerular filtration rate, OHA = oral hypoglycemic agent, HbA_{1c} = glycated hemoglobin, FPG = fasting plasma glucose, UACR = urine albumin to creatinine ratio, BMI = body mass index.

^aUnivariate Cox proportional hazards models.

DISCUSSION

In this study, we investigated the characteristics of DR in patients with newly diagnosed T2DM. A total 10.53% of patients newly diagnosed with T2DM had DR at the time of T2DM diagnosis. This ratio was similar to the 16.5% found by Roy Chowdhury et al.¹⁶ using digital photograph analysis. Unlike that study, we investigated the clinical features of DR in patients with newly diagnosed DM and those systemic factors associated with the presence of DR at the time of T2DM diagnosis. Our results showed that HbA_{1c}, FPG, UACR, and urine microalbumin level were significantly higher in patients with DR than in those without DR. HbA_{1c}, FPG, UACR, and urine microalbumin level were positively correlated with the severity of DR in patients with newly diagnosed T2DR.

The known major risk factors for DR are duration of DM, hyperglycemia, and hypertension.³ Among these factors, duration of T2DM is considered to be the key risk factor for DR development.^{3,8-10} With diabetes duration more than 20 years, 40%–60% of patients have DR.¹² However, in patients with newly diagnosed T2DM, the duration of DM cannot be determined. In some newly diagnosed T2DM patients, T2DM was recently developed. On the other hand, some T2DM patients might have not been aware of T2DM for a long time. In cases that the duration of diabetes cannot be determined, it will be meaningful to demonstrate the DR features and its related systemic risk factors in newly diagnosed DM. Therefore, in the current study, we investigated the characteristics of DR and systemic factors related to the presence of DR at the time of T2DM diagnosis.

We found that high HbA_{1c} level was the only systemic factor related to the presence of DR at the time of T2DM diagnosis (OR, 2.372; 95% CI, 1.891–2.976; $P < 0.001$). We also found

a significant positive correlation between HbA_{1c} level and DR severity. In previous studies, HbA_{1c} has been considered an independent risk factor for DR.⁹ And mean HbA_{1c} is the strongest risk factor for the progression of retinopathy.¹⁷ In addition, low HbA_{1c} reduces the risk for DR development. In particular, according to the United Kingdom Prospective Diabetes Study, the risk of microvascular complications including DR is reduced by 37% with a decrease of 1% in HbA_{1c}.¹⁸ In the current study, even in patients with newly diagnosed T2DM, HbA_{1c} could be used as a predictor of the presence and severity of DR at the time of T2DM diagnosis. Therefore, patients newly diagnosed with T2DM who have high HbA_{1c} levels require more careful fundus examination.

In this study, urine microalbumin levels and UACR were significantly correlated with the severity of DR. Several studies have shown that microalbuminuria is associated with DR.^{19,20} In addition, UACR has a better association with DR than eGFR and could be an important risk factor for DR.²¹ Vascular endothelial dysfunction of small vessels, secondary to prolonged exposure to a hyperglycemic condition, contributes to both the development and progression of DR and diabetic nephropathy.²² A possible explanation why high UACR and urine microalbumin levels could serve to predict the presence and severity of DR at the time of T2DM diagnosis is as follows. Experimental diabetic rat models have shown increased expression of VEGF secondary to glomerular injury.²³ VEGF expression owing to glomerular injury may be further released into the systemic circulation, and elevated serum VEGF levels have an inverse relationship with the degree of kidney function.²⁴ The degree of decrease in renal function and DR are interrelated, and recent studies have shown that DR and diabetic nephropathy have a common pathway of disease; high levels of microalbumin or UACR are also highly correlated with advanced DR.²⁵⁻²⁷ Considering that urine microalbumin level and UACR serve as representative markers for glomerular injury, and the amount of glomerular injury is related to DR, microalbuminuria and high UACR could be used to predict the presence and severity of DR at the time of T2DM diagnosis.

There have been controversies surrounding the relationship between hyperlipidemia and risk of DR.²⁸ The triglyceride-lowering agent fenofibrate is thought to be effective in slowing DR progression in patients with mild NPDR²⁹; however, other studies have reported no relationship between hyperlipidemia and risk of DR.³⁰ In this study, we analyzed serum level of cholesterol, triglyceride, high-density lipoprotein cholesterol and low-density lipoprotein cholesterol. However, these factors did not appear to be associated with the presence or progression of DR. We think the conceivable reason for our result is because we could only analyze the lipid profile from serum, not at the intraretinal level. In the previous report, lipid profile in serum might not accurately reflect intraretinal lipid transport which could affect the pathogenesis of DR.³¹ Therefore, the serum lipid profile which was analyzed in our study might not reflect the development/progression of DR.

We analyzed the systemic risk factors associated with progression of DR. Known strong predictors for DR progression are duration of DM and HbA_{1c} level.¹¹ Previous large, randomized clinical trials have established the benefit of glycemic control on reducing the progression of DR.^{32,33} In addition, other factors affecting DR progression are a young age at DM diagnosis, man gender, hypertension, anemia, insulin use, and smoking.^{34,35} In addition, abnormal renal profiles including a high serum creatinine level, low eGFR, and high UACR are associated with the development of PDR and diabetic macular edema in patients with T2DM.^{22,36} Unlike previous studies, we sought factors related to DR progression using systemic findings at the time of T2DM diagnosis; however, we found no significant baseline

risk factors for DR progression. We believe that this is due to the small number of patients with DR included in this study. Therefore, to clarify which baseline systemic factors are associated with DR progression in patients with newly diagnosis T2DM, further studies with a larger number of patients might be needed.

The strength of our study is that we investigated the frequency and characteristics of DR in patients with newly diagnosed T2DM and its association with systemic factors for the first time. We also presented a method for predicting which patients might have DR at the time of T2DM diagnosis using systemic factors. However, this study also had some limitations inherent to its retrospective design. Moreover, the number of patients with DR among all included patients was relatively small. In addition, this was a single center study. Therefore, further large-scale prospective multicenter studies among patients with newly diagnosed T2DM will be needed.

In summary, among our patients with newly diagnosed T2DM, 10.53% had DR at the initial ophthalmologic examination. These patients showed high HbA_{1c}, FPG, UACR and urine microalbumin levels. There was also a significant positive correlation with the severity of DR. Therefore, when a diabetologist refers a patient with newly diagnosed T2DM to an ophthalmologist, the ophthalmologist should check the systemic condition of the patient. Patients with high HbA_{1c}, FPG, UACR, and urine microalbumin levels require more careful fundus examination and additional studies, such as fluorescein angiography. Diabetologists also should be aware of the presence of DR in about 10% of patients who are initially diagnosed with T2DM, and those with high systemic risk factors in particular should be encouraged to actively undergo eye examinations.

REFERENCES

1. Expert Committee on the Diagnosis and Classification of Diabetes Mellitus. Report of the expert committee on the diagnosis and classification of diabetes mellitus. *Diabetes Care* 2003;26 Suppl 1:S5-20.
[PUBMED](#) | [CROSSREF](#)
2. Kim YJ, Kim JG, Lee JY, Lee KS, Joe SG, Park JY, et al. Development and progression of diabetic retinopathy and associated risk factors in Korean patients with type 2 diabetes: the experience of a tertiary center. *J Korean Med Sci* 2014;29(12):1699-705.
[PUBMED](#) | [CROSSREF](#)
3. Yau JW, Rogers SL, Kawasaki R, Lamoureux EL, Kowalski JW, Bek T, et al. Global prevalence and major risk factors of diabetic retinopathy. *Diabetes Care* 2012;35(3):556-64.
[PUBMED](#) | [CROSSREF](#)
4. Cheung N, Mitchell P, Wong TY. Diabetic retinopathy. *Lancet* 2010;376(9735):124-36.
[PUBMED](#) | [CROSSREF](#)
5. Alinia C, Mohammadi SF, Lashay A, Rashidian A. Impact of diabetic retinopathy on health-related quality of life in iranian diabetics. *Iran J Public Health* 2017;46(1):55-65.
[PUBMED](#)
6. Cho S, Shin JY, Kim HJ, Eun SJ, Kang S, Jang WM, et al. Chasms in achievement of recommended diabetes care among geographic regions in Korea. *J Korean Med Sci* 2019;34(31):e190.
[PUBMED](#) | [CROSSREF](#)
7. Kussmann M, Morine MJ, Hager J, Sonderegger B, Kaput J. Perspective: a systems approach to diabetes research. *Front Genet* 2013;4:205.
[PUBMED](#) | [CROSSREF](#)
8. Jee D, Lee WK, Kang S. Prevalence and risk factors for diabetic retinopathy: the Korea National Health and Nutrition Examination Survey 2008–2011. *Invest Ophthalmol Vis Sci* 2013;54(10):6827-33.
[PUBMED](#) | [CROSSREF](#)

9. Liu L, Wu J, Yue S, Geng J, Lian J, Teng W, et al. Incidence density and risk factors of diabetic retinopathy within type 2 diabetes: a five-year cohort study in China (report 1). *Int J Environ Res Public Health* 2015;12(7):7899-909.
[PUBMED](#) | [CROSSREF](#)
10. Park S, Rhee SY, Jeong SJ, Kim K, Chon S, Yu SY, et al. Features of long-standing Korean type 2 diabetes mellitus patients with diabetic retinopathy: a study based on standardized clinical data. *Diabetes Metab J* 2017;41(5):393-404.
[PUBMED](#) | [CROSSREF](#)
11. Chong YH, Fan Q, Tham YC, Gan A, Tan SP, Tan G, et al. Type 2 diabetes genetic variants and risk of diabetic retinopathy. *Ophthalmology* 2017;124(3):336-42.
[PUBMED](#) | [CROSSREF](#)
12. Stefánsson E, Bek T, Porta M, Larsen N, Kristinsson JK, Agardh E. Screening and prevention of diabetic blindness. *Acta Ophthalmol Scand* 2000;78(4):374-85.
[PUBMED](#) | [CROSSREF](#)
13. Wu L, Fernandez-Loaiza P, Sauma J, Hernandez-Bogantes E, Masis M. Classification of diabetic retinopathy and diabetic macular edema. *World J Diabetes* 2013;4(6):290-4.
[PUBMED](#) | [CROSSREF](#)
14. Wilkinson CP, Ferris FL 3rd, Klein RE, Lee PP, Agardh CD, Davis M, et al. Proposed international clinical diabetic retinopathy and diabetic macular edema disease severity scales. *Ophthalmology* 2003;110(9):1677-82.
[PUBMED](#) | [CROSSREF](#)
15. Bressler SB, Odia I, Glassman AR, Danis RP, Grover S, Hampton GR, et al. Changes in diabetic retinopathy severity when treating diabetic macular edema with ranibizumab: DRCR.net protocol I 5-year report. *Retina* 2018;38(10):1896-904.
[PUBMED](#) | [CROSSREF](#)
16. Roy Chowdhury S, Thomas RL, Dunseath GJ, Peter R, Rees DA, North RV, et al. Diabetic retinopathy in newly diagnosed subjects with type 2 diabetes mellitus: contribution of β -cell function. *J Clin Endocrinol Metab* 2016;101(2):572-80.
[PUBMED](#) | [CROSSREF](#)
17. Hainsworth DP, Bebu I, Aiello LP, Sivitz W, Gubitosi-Klug R, Malone J, et al. Risk factors for retinopathy in type 1 diabetes: the DCCT/EDIC study. *Diabetes Care* 2019;42(5):875-82.
[PUBMED](#) | [CROSSREF](#)
18. Stratton IM, Cull CA, Adler AI, Matthews DR, Neil HA, Holman RR. Additive effects of glycaemia and blood pressure exposure on risk of complications in type 2 diabetes: a prospective observational study (UKPDS 75). *Diabetologia* 2006;49(8):1761-9.
[PUBMED](#) | [CROSSREF](#)
19. Anand KV, Lal CA, Ac G, Js K, Saurabh A. Assessment of the relationship between microalbuminuria, diabetic nephropathy & diabetic retinopathy. *J Assoc Physicians India* 2016;64(1):92.
20. Yun JS, Lim TS, Cha SA, Ahn YB, Song KH, Choi JA, et al. Clinical course and risk factors of diabetic retinopathy in patients with type 2 diabetes mellitus in Korea. *Diabetes Metab J* 2016;40(6):482-93.
[PUBMED](#) | [CROSSREF](#)
21. Romero-Aroca P, Baget-Bernaldiz M, Navarro-Gil R, Moreno-Ribas A, Valls-Mateu A, Sagarra-Alamo R, et al. Glomerular filtration rate and/or ratio of urine albumin to creatinine as markers for diabetic retinopathy: a ten-year follow-up study. *J Diabetes Res* 2018;2018:5637130.
[PUBMED](#) | [CROSSREF](#)
22. Hsieh YT, Tsai MJ, Tu ST, Hsieh MC. Association of abnormal renal profiles and proliferative diabetic retinopathy and diabetic macular edema in an Asian population with type 2 diabetes. *JAMA Ophthalmol* 2018;136(1):68-74.
[PUBMED](#) | [CROSSREF](#)
23. Cha DR, Kang YS, Han SY, Jee YH, Han KH, Han JY, et al. Vascular endothelial growth factor is increased during early stage of diabetic nephropathy in type II diabetic rats. *J Endocrinol* 2004;183(1):183-94.
[PUBMED](#) | [CROSSREF](#)
24. Pawlak K, Mysliwiec M, Pawlak D. Oxidative stress, phosphate and creatinine levels are independently associated with vascular endothelial growth factor levels in patients with chronic renal failure. *Cytokine* 2008;43(1):98-101.
[PUBMED](#) | [CROSSREF](#)
25. Lee WJ, Sobrin L, Lee MJ, Kang MH, Seong M, Cho H. The relationship between diabetic retinopathy and diabetic nephropathy in a population-based study in Korea (KNHANES V-2, 3). *Invest Ophthalmol Vis Sci* 2014;55(10):6547-53.
[PUBMED](#) | [CROSSREF](#)

26. Lim LS, Cheung CY, Sabanayagam C, Lim SC, Tai ES, Huang L, et al. Structural changes in the retinal microvasculature and renal function. *Invest Ophthalmol Vis Sci* 2013;54(4):2970-6.
[PUBMED](#) | [CROSSREF](#)
27. Kwon SH, Shin JP, Kim IT, Park DH. Association of plasma semaphorin 3A with phenotypes of diabetic retinopathy and nephropathy. *Invest Ophthalmol Vis Sci* 2016;57(7):2983-9.
[PUBMED](#) | [CROSSREF](#)
28. Miljanovic B, Glynn RJ, Nathan DM, Manson JE, Schaumberg DA. A prospective study of serum lipids and risk of diabetic macular edema in type 1 diabetes. *Diabetes* 2004;53(11):2883-92.
[PUBMED](#) | [CROSSREF](#)
29. Knickelbein JE, Abbott AB, Chew EY. Fenofibrate and diabetic retinopathy. *Curr Diab Rep* 2016;16(10):90.
[PUBMED](#) | [CROSSREF](#)
30. Keech AC, Mitchell P, Summanen PA, O'Day J, Davis TM, Moffitt MS, et al. Effect of fenofibrate on the need for laser treatment for diabetic retinopathy (FIELD study): a randomised controlled trial. *Lancet* 2007;370(9600):1687-97.
[PUBMED](#) | [CROSSREF](#)
31. Tserentsoodol N, Gordiyenko NV, Pascual I, Lee JW, Fliesler SJ, Rodriguez IR. Intraretinal lipid transport is dependent on high density lipoprotein-like particles and class B scavenger receptors. *Mol Vis* 2006;12:1319-33.
[PUBMED](#)
32. The effect of intensive diabetes treatment on the progression of diabetic retinopathy in insulin-dependent diabetes mellitus. The Diabetes Control and Complications Trial. *Arch Ophthalmol* 1995;113(1):36-51.
[PUBMED](#) | [CROSSREF](#)
33. ACCORD Eye Study Group Chew EY, Ambrosius WT, Davis MD, Danis RP, Gangaputra S, et al. Effects of medical therapies on retinopathy progression in type 2 diabetes. *N Engl J Med* 2010;363(3):233-44.
[PUBMED](#) | [CROSSREF](#)
34. Fong DS, Aiello L, Gardner TW, King GL, Blankenship G, Cavallerano JD, et al. Retinopathy in diabetes. *Diabetes Care* 2004;27 Suppl 1:S84-7.
[PUBMED](#) | [CROSSREF](#)
35. Harris Nwanyanwu K, Talwar N, Gardner TW, Wrobel JS, Herman WH, Stein JD. Predicting development of proliferative diabetic retinopathy. *Diabetes Care* 2013;36(6):1562-8.
[PUBMED](#) | [CROSSREF](#)
36. Hwang H, Chae JB, Kim JY, Moon BG, Kim DY. Changes in optical coherence tomography findings in patients with chronic renal failure undergoing dialysis for the first time. *Retina* 2019;39(12):2360-8.
[PUBMED](#) | [CROSSREF](#)