

RESEARCH ARTICLE

Open Access



Impact of prosthesis-patient mismatch after mitral valve replacement in rheumatic population: Does mitral position prosthesis-patient mismatch really exist?

Seung Hyun Lee, Byung Chul Chang, Young-Nam Youn, Hyun Chel Joo, Kyung-Jong Yoo and Sak Lee*

Abstract

Background: Prosthesis-patient mismatch (PPM) is characterised by the effects of inadequate prosthesis size relative to body surface area (BSA). The purpose of this study was to determine the impact of PPM on late clinical outcomes after mitral valve replacement (MVR) in rheumatic population.

Methods: From 2000 to 2013, a total of 445 patients (mean age 54.2 ± 11.7 years) underwent isolated MVR (\pm tricuspid annuloplasty) for rheumatic disease were investigated. Effective orifice area (EOA) was determined by the continuity equation and PPM was defined as indexed EOA ($EOA/BSA \leq 1.2 \text{ cm}^2/\text{m}^2$). Clinical and echocardiographic follow-up (mean follow up 8.7 ± 4.0 years) results were compared.

Results: 37% of patients ($n = 165$) had PPM. There were no significant differences in baseline and operative characteristics between patients with and without PPM except age and IEOA. A significant decrease in mean trans-valvular pressure gradient (MPG) over time following MVR, however the change of MPG showed no differences between groups (No PPM vs. PPM: $8.9 \pm 4.7 \text{ mmHg} \rightarrow 3.6 \pm 1.2 \text{ mmHg}$ vs. $8.7 \pm 4.5 \text{ mmHg} \rightarrow 3.8 \pm 1.4 \text{ mmHg}$, p -value = 0.28). In all patients, there was a reduction of left atrium dimension ($58.6 \pm 12.0 \text{ mm} \rightarrow 53.2 \pm 12.0 \text{ mm}$ vs. $57.9 \pm 8.9 \text{ mm} \rightarrow 52.2 \pm 8.9 \text{ mm}$, p -value = 0.68) and left ventricular end diastolic diameter ($49.9 \pm 5.7 \text{ mm} \rightarrow 48.9 \pm 5.7 \text{ mm}$ vs. $49.7 \pm 6.0 \text{ mm} \rightarrow 48.3 \pm 5.0 \text{ mm}$, $p = 0.24$) without statistical significance. Freedom from TR progression rates at 3 and 5 years (99% vs. 98%, 99% vs. 98%, p -value = 0.1), and overall survival rates at 3 and 5 years (97% vs. 96%, 94% vs. 94%, p -value = 0.7) were similar.

Conclusion: This study shows that mitral PPM is not associated with atrial /ventricular remodeling and might not influence late clinical outcome including late TR progression, survival in rheumatic population.

Keywords: Heart valve prosthesis, Hemodynamics, Mitral valve, Mortality, Surgery, Valves

Background

Previous studies reported that prosthesis-patient mismatch (PPM) in aortic valve position is strongly associated with worse hemodynamics, less regression of left ventricular hypertrophy, more cardiac events, and higher mortality rates after aortic valve replacement [1–3]. However, PPM following mitral valve replacement (MVR)

has been still less investigated. Previous studies reported that mitral PPM is various, from 30 to 85% when in vivo evaluation of effective orifice area (EOA) is performed [4–6]. Some studies on the clinical impact of PPM following MVR on survival have reported conflicting results, although two recent trials showed that PPM in the mitral position independently affects long-term survival.

Dumesnil et al. have addressed that indexed EOA derived from in vivo postoperative measures is the only parameter that can consistently be correlated with postoperative gradients as well as clinical outcomes in defining PPM [7]. Mitral PPM can be equated to residual mitral stenosis

* Correspondence: Sak911@yuhs.ac

Division of Thoracic and Cardiovascular Surgery, Severance Cardiovascular Hospital, Yonsei Cardiovascular Research Institute, Yonsei University, College of Medicine, 250 Seongsanno, Seodaemun-gu, Seoul 03722, Republic of Korea



resulting in increased trans-mitral gradients, increased left atrial pressure, and pulmonary hypertension (PH). These factors may lead to right ventricular dilatation/dysfunction and to atrial fibrillation, which may, in turn, lead to tricuspid annulus dilatation and functional tricuspid regurgitation (fTR).

However, despite of small sized mitral prosthesis implantation such as 25 mm, we can easily find that no occurrence of TR after MVR during follow duration. In Asian rheumatic population, mitral annulus size is relatively small compared with western mitral disease, so we can easily meet the patients with small sized mitral prosthesis replacement and collect many cases. The objective of this study was to investigate the impact of mitral PPM on late clinical outcomes including TR progression and survival following MVR in rheumatic population.

Methods

Patient population

We retrospectively reviewed a consecutive series of 445 patients who underwent elective isolated MVR with or without TAP (tricuspid annuloplasty) for rheumatic mitral valve disease at Severance Cardiovascular Hospital, University of Yonsei, from Jan 2000 to Dec 2013. Patients with concomitant aortic valve, coronary artery bypass and aorta surgery were excluded. In cases of TAP, if residual TR grade after TAP were 2,3 and 4, they were also excluded for minimizing the confusion of TR progression analysis. Data were retrospectively collected and recorded in an electronic database, and clinical follow-up was completed with routine outpatient clinics. Patients who did not present at the visit were contacted by telephone, and all symptoms, mortality, and any complications that occurred during follow-up were recorded. This study was approved by the Institutional Review Board of Yonsei University College of Medicine. Individual patient consent was waived because this study did not interfere with patient treatment, and the database was designed so that individual patients could not be identified. All baseline and clinical characteristics were obtained from the medical record of patients.

All patients underwent a full median sternotomy and operation performed on cardio-pulmonary bypass. The prostheses were used in as followings:

- Mechanical prosthesis: St. Jude Medical Standard Mechanical (St. Jude Medical Inc., St. Paul, MN) ($n = 140$), MIRA (Edwards Lifesciences; Irvine, Calif) ($n = 54$), ATS (Medtronic, Minneapolis, MN) ($n = 85$), Sorin (Sorin Biomedica, Saluggia, Italy) ($n = 11$), ON-X (On-X Life Technology, Austin, TX) ($n = 61$), CarboMedics Mechanical (Sulzer CarboMedics, Austin, TX) ($n = 12$).
- Bioprosthesis: Perimount Magna (Edwards Lifesciences LLC, Irvine, CA) ($n = 49$), Epic (St. Jude Medical Inc., St. Paul, MN) ($n = 17$), Hancock (Medtronic, Minneapolis, MN) ($n = 7$), Biocor (St. Jude Medical Inc., St. Paul, MN) ($n = 11$). In all cases, posterior chordal preservation was attempted as a routine maneuver.

Doppler-echocardiographic assessment

Clinical and echocardiographic assessment was performed prior to MVR and 12–60 months after operation. The echocardiographic images of the included patients were reanalyzed by 2 experienced echocardiographers who were unaware of the patient's clinical data. LV internal diameter, septal thickness, and LV posterior wall thickness were measured at end-diastole. LV mass was calculated using the formula developed by Devereux et al. [8], and LV mass was indexed for the body surface area. The left atrial volume was calculated from the parasternal long-axis view and apical four-chamber view using the prolate ellipse method [9]. The severity of TR was assessed using color flow imaging and regurgitant jet area [10]. Doppler color flow mapping was used to assess the competency of the prosthetic valves.

EOA calculation and definition of PPM

The in-vivo prosthetic valve effective orifice area (EOA) was calculated with the use of the continuity equation, using the stroke volume measured in the LV outflow tract divided by the integral of the mitral valve transprosthetic velocity-time integral during diastole. The indexed EOA (IEOA) was calculated by dividing the measured EOA by the patient's body surface area (BSA) at the time of follow-up. Indexed EOA was used to define PPM as significant if $\leq 1.2 \text{ cm}^2/\text{m}^2$, moderate if $> 0.9 \text{ cm}^2/\text{m}^2$ and $\leq 1.2 \text{ cm}^2/\text{m}^2$, and severe if $\leq 0.9 \text{ cm}^2/\text{m}^2$ [4].

Statistical analysis

Data were prospectively collected and recorded in an electronic database; statistical analysis was performed using the Statistical Package for the Social Sciences, version 11.0 (SPSS, Chicago, IL). Continuous data are expressed as the mean and standard deviation; categorical data are expressed as the percentage, comparisons were made using the 2-sample t and the χ^2 or the Fischer exact tests, respectively. We gain the optimal cutoff value of IEOA for late TR progression and mortality, receiver operating curve (ROC) method was used. Comparison between group with or without PPM, Kaplan Meyer survival analysis was used and p value < 0.05 was considered statistically significant.

Results

Mitral valve patient–prosthesis mismatch

Of the 445 study patients, PPM was in 165 (37.1%), severe in only 8 by the definition of PPM. The proportion of patients with PPM was lower in those with mechanical valves ($n = 362$) than those with bioprosthesis ($n = 83$) ($n = 116$, 32% vs. $n = 49$, 59%, $p < 0.01$). An IEOA of patients with mechanical valves had a higher than those with bioprosthesis (1.41 ± 0.31 vs. 1.15 ± 0.21 , $p < 0.01$). The clinical characteristics of the patients are shown in Table 1. Female portion of patients with PPM were similar (52, 31.5% vs. 69, 24.6%, $p = 0.09$) and PMV (Percutaneous mitral valvuloplasty) history were also not significantly different between groups (37, 8.3% vs. 66, 14.8%, $p = 0.8$). However, the age (55.96 ± 12.36 vs. 53.28 ± 10.82 , $p < 0.01$) and BSA (body surface area, m^2) in PPM group (1.61 ± 0.14 vs. 1.55 ± 0.15 , $p < 0.01$) was significantly higher than no PPM group regardless gender. Tissue valve portion was meaningfully higher in PPM group compared with No PPM group (29.7% vs. 12.1%).

Perioperative data and early clinical outcomes

Perioperative and early outcomes including postoperative echocardiography data are shown in Table 2. Thirty-day mortality was similar between groups (0% vs. 0.2%, $p = 1.0$), and postoperative CVA (cerebrovascular accidents) was also not different (0% vs. 0.2%, $p = 1.0$). There were also similar rates of other morbidities (postoperative bleeding: 1.8% vs. 1.1%, $p = 0.08$, acute renal failure: 0.2% vs. 0.7%) between groups.

The mean prosthesis size (mm) in No PPM group was significantly bigger than PPM group (27.89 ± 1.55 vs. 27.58 ± 1.57 , $p = 0.03$). Values of EOA (2.38 ± 0.41 vs. 1.69 ± 0.15 , $p < 0.01$) and IEOA (1.55 ± 0.25 vs. 1.06 ± 0.08 , $p < 0.01$) in No PPM group were also significantly bigger than PPM group (Table 2). The early change of

Table 2 Early clinical outcomes and the the change of hemodynamics parameters

Perioperative and postoperative parameters			
	PPM ($n = 165$)	No PPM ($n = 280$)	p value
30 days mortality	0 (0%)	1 (0.2%)	1.0
CVA (n, %)	0 (0%)	1 (0.2%)	1.0
ARF (n,%)	1 (0.2%)	3 (0.7%)	1.0
Postoperative Bleeding (n,%)	8 (1.8%)	5 (1.1%)	0.08
Prosthesis size (mm)	27.58 ± 1.57	27.89 ± 1.55	0.03
EOA (cm^2)	1.69 ± 0.15	2.38 ± 0.41	< 0.01
IEOA	1.06 ± 0.08	1.55 ± 0.25	< 0.01
The change of RVSP (mmHg)	10.85 ± 14.75	9.91 ± 14.75	0.53
The change of MPG (mmHg)	4.7 ± 4.5	5.3 ± 5.0	0.34

CVA cerebral vascular event, ARF acute renal failure, EOA effective orifice area, IEOA indexed effective orifice area, RVSP right ventricular systolic pressure, MPG mean pressure gradient

MPG (mmHg) (4.7 ± 4.5 vs. 5.3 ± 5.0 , $p = 0.34$) and right ventricular systolic pressure (RVSP, mmHg) (10.85 ± 14.75 vs. 9.91 ± 14.75 , $p = 0.53$) after MVR was similar between groups.

Late clinical outcomes including postoperative echocardiography data, TR progression and survival

Mean echocardiography follow up duration was 8.4 ± 3.7 (0.3–15.2) years. Left ventricular ejection fraction (LVEF, %), left ventricular end systolic dimension (LVESD, mm), left ventricular end diastolic dimension (LVEDD, mm), left atrium size (anterior-posterior distance, mm), and mean pressure gradient (MPG, mmHg) were routinely checked during follow up for analyzing ventricular remodeling. LVEF improvement in No PPM group was significantly better than PPM group (Δ : 0.83 ± 13.77 vs. 0.98 ± 9.70 , $p = 0.89$). Left atrium (Δ LAD: 11.0 ± 18.8 vs. 13.5 ± 19.1 , $p = 0.19$) and ventricular remodeling (Δ LVESD: 5.6 ± 12.4 vs. 4.1 ± 11.7 , $p = 0.2$ and Δ LVEDD: 8.3 ± 17.8 vs. 5.7 ± 16.0 , $p = 0.13$) were similar between groups. The reduction of right ventricular systolic pressure (RVSP, mmHg) (8.75 ± 8.2 vs. 10.7 ± 17.9 , $p = 0.30$) and the MPG change (4.9 ± 4.5 vs. 5.3 ± 5.0 , $p = 0.34$) were also not significantly different between groups (Table 3).

Freedom from TR progression (3,4) rate at 3, 5, and 10 years was 99%, 98%, and 93%, respectively. Freedom from TR progression (3,4) rate in patients with PPM at 3, 5, and 10 years was similar to that of patients without PPM (98%, 98%, 98% vs. 99%, 99%, 91%, respectively, $P = 0.09$) (Fig. 1a). After including TR grade 2, freedom from TR progression (2,3,4) in patients with PPM at 3, 5, and 10 years was similar to that of patients without PPM (98%, 96%, 94% vs. 98%, 96%, 85%, respectively, $P = 0.10$) (Fig. 1b).

Table 1 Basic preoperative characteristics

Preoperative parameters			
	PPM ($n = 165$)	No PPM ($n = 280$)	p value
Age (years)	55.96 ± 12.36	53.28 ± 10.82	0.02
Gender (Female, n, %)	52 (31.5%)	69 (24.6%)	0.09
BSA (cm^2)	1.61 ± 0.14	1.55 ± 0.15	< 0.01
Valve type (Tissue No, %)	49 (29.7%)	34 (12.1%)	< 0.01
Previous PMV Hx. (n, %)	37 (8.3%)	66 (14.8%)	0.82
LVEF (%)	62.70 ± 9.28	60.71 ± 9.52	0.31
LVEDD (mm)	48.27 ± 5.06	48.98 ± 5.72	0.23
LVESD (mm)	32.98 ± 5.17	33.8 ± 6.25	0.19
LAD (AP, mm)	52.29 ± 8.98	53.42	0.38
MPG (mmHg)	8.7 ± 4.52	8.91 ± 4.71	0.38

BSA body surface area, PMV percutaneous mitral valvuloplasty, LVEF left ventricular ejection fraction, LVEDD left ventricular end diastolic dimension, LVESD left ventricular end systolic dimension, MPG mean pressure gradient

Table 3 Serial change of hemodynamic characteristic and remodelling data

		Preoperative	Immediate postoperative	Last followup
LVEF (%)	No PPM	60.71	60.30	62.09
	PPM	61.70	61.60	62.68
LVESD (mm)	No PPM	34.64	34.21	33.48
	PPM	33.76	33.08	33.09
LVEDD (mm)	No PPM	49.92	48.67	48.69
	PPM	49.30	47.94	48.06
LAD (AP, mm)	No PPM	58.12	51.32	52.62
	PPM	57.88	51.03	52.17
MPG (mmHg)	No PPM	8.99	3.59	3.76
	PPM	8.83	4.01	4.02
RVSP (mmHg)	No PPM	42.33	31.82	32.96
	PPM	43.75	32.56	33.02

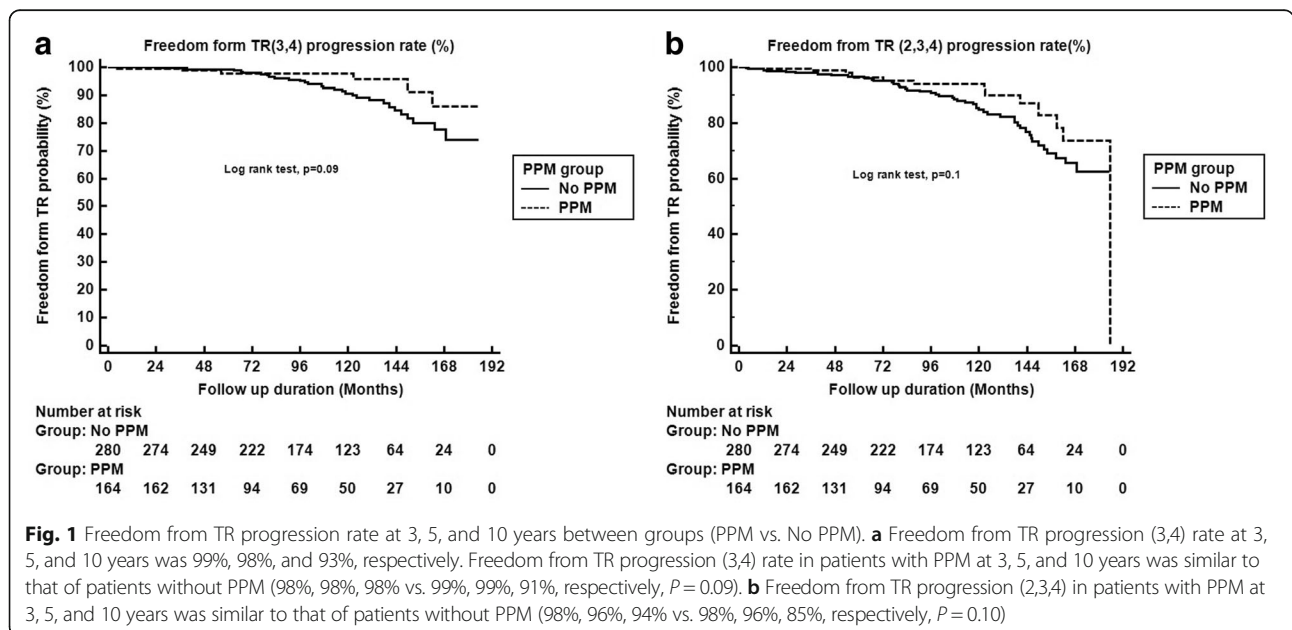
LVEF left ventricular ejection fraction, LVEDD left ventricular end diastolic dimension, LVESD left ventricular end systolic dimension, LAD left atrium dimension, MPG mean pressure gradient, RVSP right ventricular systolic pressure

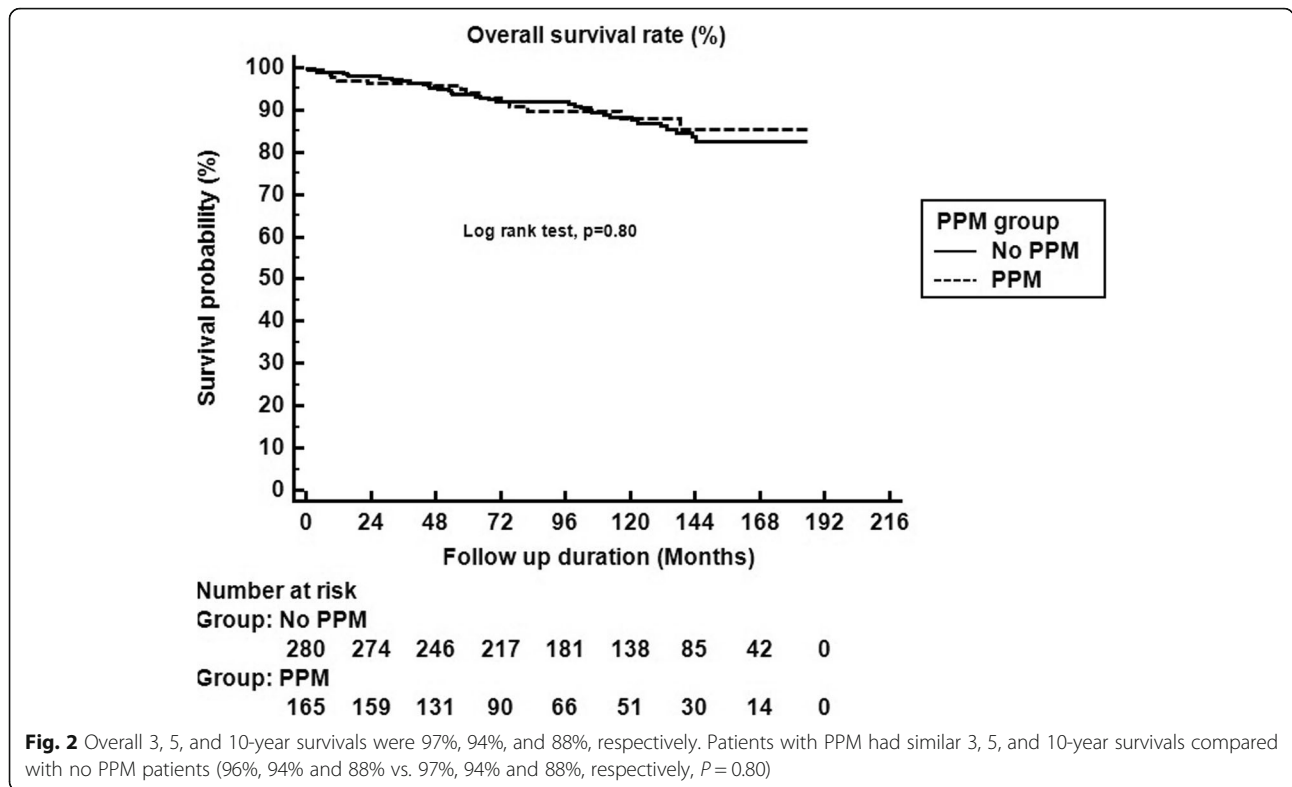
Overall 3, 5, and 10-year survivals were 97%, 94%, and 88%, respectively. Patients with PPM had similar 3, 5, and 10-year survivals compared with no PPM patients (96%, 94% and 88% vs. 97%, 94% and 88%, respectively, $P = 0.80$) (Fig. 2).

Sub-analysis of severe PPM patients was as followings: Total eight patients had severe PPM (definition: IEOA ≤ 0.9 cm²/m²) and average age was 62.63 years (37 ~ 71). BSA was 1.7 (1.56 ~ 1.81) and preoperative TR were all under mild (Gr1). EF was 58.5% (36 ~ 71%), LVEDD was 52.5 mm (47 ~ 59 mm) and LA size (AP diameter, mm) was 59.3 mm (51 ~ 65 mm). Average IEOA was 0.85 (0.82~0.88). Five were Hancock ($n = 2/27$ mm, $n = 3/29$ mm, Medtronic, Minneapolis, MN), 2 were Epic ($n =$

2/29 mm, St. Jude Medical Inc., St. Paul, MN) and 1 was Perimount Magna ($n = 1/25$ mm, Edwards Lifesciences LLC, Irvine, CA). There was no in-hospital mortality and postoperative newly onset TR was none in all cases. There was just one case of late mortality after postoperative 6 years due to stomach cancer, but this was not correlated with cardiac death or TR progression.

For the gaining optimal IEOA cut value of TR progression, we used ROC method and 1.38 was determined as a cut value (new PPM value) for TR progression (Fig. 3). We divided two groups based on 1.38 (IEOA, new PPM) and compared late TR progression and cumulative survival. But against our expectation, the larger IEOA group ($1.39 \leq$, No PPM) showed inferior tendency of freedom





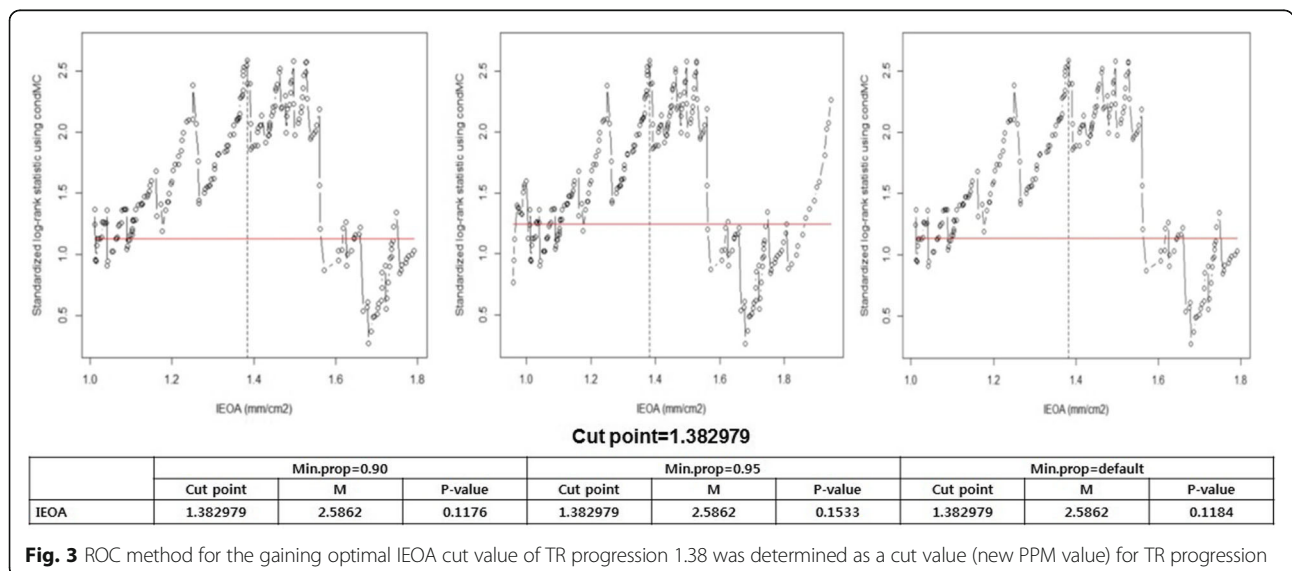
from TR progression at 3,5 and 10 years (99, 99% and 88% vs. 99%, 98% and 97%, respectively, $P = 0.08$) (Fig. 4a). For survival, Patients with PPM had similar 3, 5, and 10-year survivals compared with no PPM patients (96%, 92% and 86% vs. 97%, 96% and 89%, respectively, $P = 0.16$) (Fig. 4b).

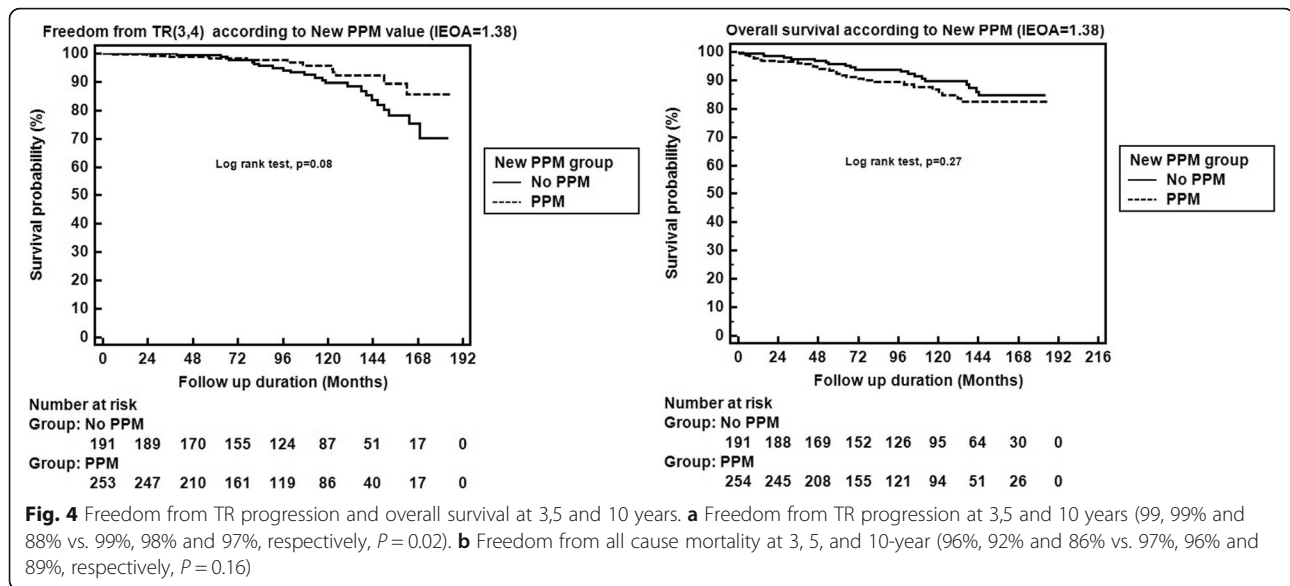
Considering valve type such as mechanical and tissue, late bleeding event related with warfarin intake showed higher in mechanical prosthesis group ($n = 11$, 3.1%)

compared with tissue prosthesis ($n = 2$, 2.4%) as expected. Late CVA incidence was 6.3% in mechanical and 10.8% in tissue prosthesis group. Reoperation related with degeneration was 1.1% in mechanical and 3.6% in tissue prosthesis group.

Discussion

The main findings of the present study are as followings: (1) the incidence of PPM after MVR in patients with





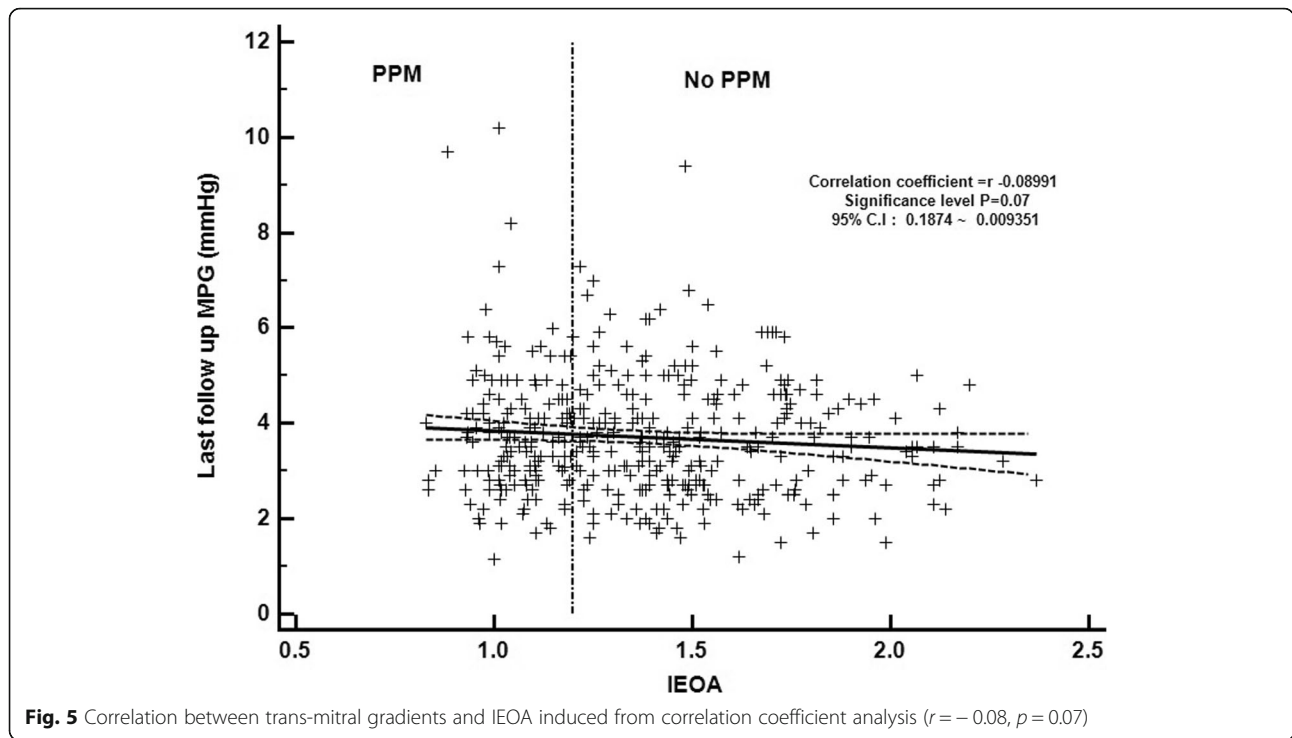
rheumatic mitral stenosis was relatively high against our expectation; (2) mitral position PPM was not correlated with late clinical result including late TR progression and survival; (3) the larger IEOA, the more TR progression tendency ($p = 0.08$), ironically.

Since first described in 1978 [11], PPM after MVR has been suggested to be correlate with poor clinical outcomes including persistent pulmonary hypertension and late functional tricuspid regurgitation [2, 12]. Until now, well described mechanism of the adverse effect of PPM was originated from high residual transvalvular pressure gradients, which is same with residual mitral stenosis with similar consequences (ie, the persistence of abnormally high mitral gradients and increased left atrial and pulmonary arterial pressures). The major consequence of pulmonary hypertension is right ventricular failure, which generally results from chronic pressure overload and associated volume overload with the development of tricuspid regurgitation. Hence, the persistence of left atrial and pulmonary hypertension associated with PPM is likely the main factor responsible for the increased mortality observed in the patients with severe PPM [4].

However, some reports suggested that PPM did not affect survival after MVR [13, 14], although several recent trials showed that mitral PPM independently affects long-term survival [4, 5]. Mitral valve replacement itself should ideally improve pulmonary hypertension and tricuspid regurgitation without increasing operative times and risk. The negative effects of aortic valve PPM on left ventricular remodeling, functional status, early mortality, and late survival have been extensively corroborated. [1, 15–17] What remains uncertain is whether clinically deleterious effects of PPM could be encountered after MVR.

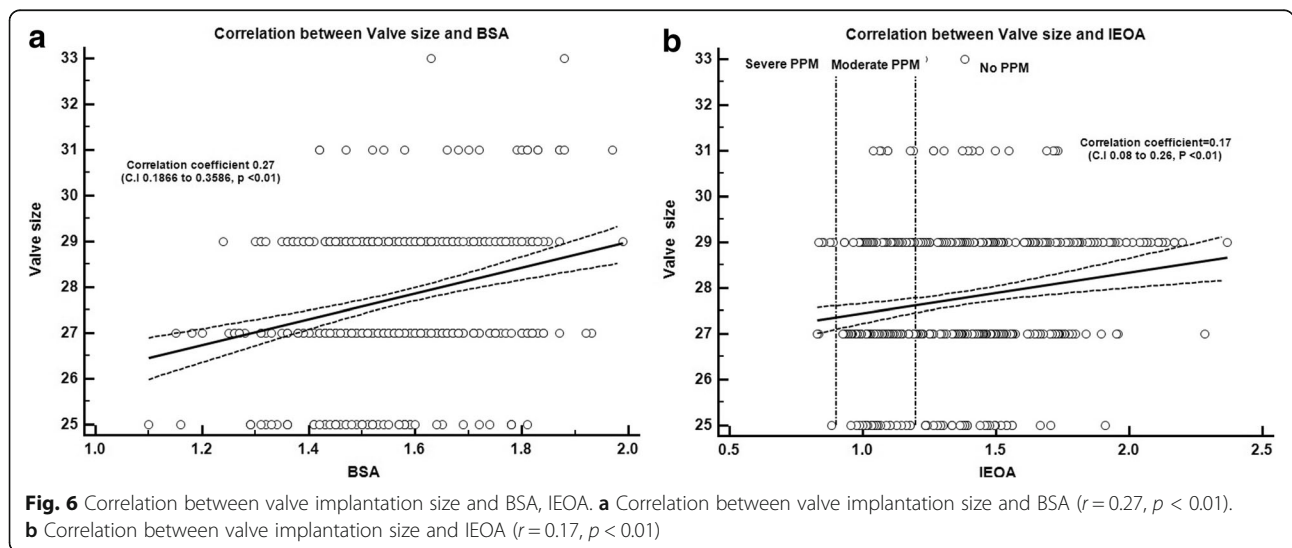
Actually, there has been a recent rising interest in mitral PPM, which has been well documented in the pediatric population from small BSA and limited size of prosthesis according to growth potential. A variety of factors have been used in an attempt to define the concept of clinical PPM in children: These have included size/weight ratios, Z scores, maximum transprosthesis velocity (V_{max}), and 2.5 times increase in body weight from the time of implant. In all instances, these factors have been correlated with outcomes (early mortality, survival, and PTH) [18, 19]. Adult mitral PPM was the subject of an original case report in 1981 [20], it has subsequently been theorized, through in vitro pulse duplicator analysis, that an indexed geometrical area (IGOA) less than 1.3 to 1.5 cm^2/m^2 could potentially leave the patient with high postoperative trans-mitral gradients. In a clinical study, a good correlation between elevated transprosthetic mitral gradient and in vivo IEOA was demonstrated by the use of the continuity eq. (CE) during echocardiographic assessment of porcine mitral prostheses [7]. In this report, an IEOA of 1.3 to 1.5 cm^2/m^2 or less at rest was associated with a mean mitral gradient of 4 mmHg; with every 10% increase in stroke volume (maximum 50%), there was a proportional increase of the mean mitral gradient.

However, in our study, there was very weak relation between trans-mitral gradients and IEOA induced from correlation coefficient analysis ($r = -0.08$, $p = 0.07$) (Fig. 5). It means that postoperative decrease of MPG was induced well regardless of IEOA and there was no problematic residual pressure gradients which can make physiologic mitral stenosis (Fig 6a). Also we found that BSA did not show strong correlation with IOEA ($r = 0.27$) and PPM incidence was not significantly different



under 29 mm sized population using same correlation coefficient analysis ($r = 0.17$) (Fig. 6b). In asian population, small size mitral implantation might be considered generally to be occurred more frequently rather than western population, however implantation prosthesis size was not so strongly associated with BSA. Mitral prosthesis size in No PPM group was slightly bigger than PPM group (27.89 ± 1.55 vs. $27.58 \pm 1.57, p = 0.03$), but after exclusion of 31 mm size implanted patients, there was no significant different between groups (27.44 ± 1.42 vs. $27.69 \pm 1.35, p = 0.08$). From the

analysis of TR progression rate, we found contradictory result that PPM group showed superior freedom from TR progression rate in both classic IEAO classification (1.25) and newly gained IEAO (1.38) classification. This doesn't necessarily mean that the bigger mitral prosthesis, the better clinical outcomes. Bigger mitral implantation might mean two things: 1) Big BSA or 2) Heart enlargement, however, from our result, big BSA doesn't necessarily mean bigger mitral implantation (Fig. 6a, $r = 0.27$). Then mitral annulus enlargement from heart failure might be strong candidate for bigger



prosthesis implantation. Actually mitral annulus enlargement sometimes closely connected with heart dysfunction and TR can be more frequently progressed in this group. Recently published study about mitral PPM suggested mitral PPM significantly affects longterm outcomes after mitral valve replacement in terms of long-term survival and freedom from cardiac death [21], however this study was just analyzed by reference values and very limited old types of valves.

Study limitations

Our study has limitations that must be recognized. First, this study was a retrospective study, although all consecutive patients who underwent MVR for rheumatic population during the study period were enrolled. Second, this study was limited in rheumatic population in order to increase the possibility of mitral PPM under hypothesis that rheumatic mitral stenosis actually showed small mitral annulus compared with other mitral pathologies. Therefore, further evaluation for the extension of population should be needed.

Conclusions

PPM is not an independent predictor of late onset TR progression and long term survival rate after MVR. Hemodynamic positive change and remodeling were similar regardless of PPM. Also contrary to expectations, BSA was not so strongly correlated with EOA and the bigger IEOA showed close correlation with TR progression tendency. So we suggest that mitral PPM might have not clinical significance in real world and the most important thing in MVR is safe implantation by appropriate sizing.

Abbreviations

ARF: Acute renal failure; BSA: Body surface area; CE: Continuity equation; CVA: Cerebral vascular event; EOA: Effective orifice area; fTR: Functional tricuspid regurgitation; IGOA: Indexed geometrical area; LVEDD: Left ventricular end diastolic dimension; LVEF: Left ventricular ejection fraction; LVESD: Left ventricular end systolic dimension; MPG: Mean pressure gradient; MPG: Mean trans-valvular pressure gradient; MVR: Mitral valve replacement; PH: Pulmonary hypertension; PMV: Percutaneous mitral valvuloplasty; PPM: Prosthesis-patient mismatch; ROC: Receiver operating curve; RVSP: Right ventricular systolic pressure; TAP: Tricuspid annuloplasty

Acknowledgements

Not applicable.

Funding

No funding was received.

Availability of data and materials

We agree with availability of data and sharing data.

Authors' contributions

SHL, SL firstly involved in study design; YNY, HCJ collected the data from medical charts; KJY and BCC reviewed the manuscript, and all authors contributed each with important intellectual content during the manuscript writing and approved the final version.

Ethics approval and consent to participate

This study was approved by the Institutional Review Board of Yonsei University College of Medicine. Individual patient consent was waived because this study did not interfere with patient treatment, and the database was designed so that individual patients could not be identified. All baseline and clinical characteristics were obtained from the medical record of patients.

Consent for publication

Not applicable.

Competing interests

The authors declare that they have no competing interests.

Publisher's Note

Springer Nature remains neutral with regard to jurisdictional claims in published maps and institutional affiliations.

Received: 29 May 2017 Accepted: 5 October 2017

Published online: 10 October 2017

References

- Pibarot P, Dumesnil JG. The relevance of prosthesis-patient mismatch after aortic valve replacement. *Nat Clin Pract Cardiovasc Med*. 2008;5(12):764–5.
- Angeloni E, Melina G, Pibarot P, Benedetto U, Refice S, Ciavarella GM, Roscitano A, Sinatra R, Pepper JR. Impact of prosthesis-patient mismatch on the regression of secondary mitral regurgitation after isolated aortic valve replacement with a bioprosthetic valve in patients with severe aortic stenosis. *Circ Cardiovasc Imaging*. 2012;5(1):36–42.
- Melina G, Angeloni E, Benedetto U, Refice S, Miceli A, Miele C, Ciavarella GM, Sinatra R. Relationship between prosthesis-patient mismatch and pro-brain natriuretic peptides after aortic valve replacement. *J Heart Valve Dis*. 2010;19(2):171–6.
- Magne J, Mathieu P, Dumesnil JG, Tanne D, Dagenais F, Doyle D, Pibarot P. Impact of prosthesis-patient mismatch on survival after mitral valve replacement. *Circulation*. 2007;115(11):1417–25.
- Lam B-K, Chan V, Hendry P, Ruel M, Masters R, Bedard P, Goldstein B, Rubens F, Mesana T. The impact of patient-prosthesis mismatch on late outcomes after mitral valve replacement. *J Thorac Cardiovasc Surg*. 2007;133(6):1464–1473.e1463.
- Jamieson WRE, Germann E, Ye J, Chan F, Cheung A, MacNab JS, Fradet GJ, Stanford EA, Bryson LA, Lichtenstein SV. Effect of prosthesis-patient mismatch on long-term survival with mitral valve replacement: assessment to 15 years. *Ann Thorac Surg*. 2009;87(4):1135–42.
- Dumesnil JG, Pibarot P. Prosthesis-patient mismatch: an update. *Curr Cardiol Rep*. 2011;13(3):250–7.
- Devereux RB, Alonso DR, Lutas EM, Gottlieb GJ, Campo E, Sachs I, Reichek N. Echocardiographic assessment of left ventricular hypertrophy: comparison to necropsy findings. *Am J Cardiol*. 1986;57(6):450–8.
- Sanfilippo AJ, Abascal VM, Sheehan M, Oertel LB, Harrigan P, Hughes RA, Weyman AE. Atrial enlargement as a consequence of atrial fibrillation. A prospective echocardiographic study. *Circulation*. 1990;82(3):792–7.
- Zoghbi WA, Enriquez-Sarano M, Foster E, Grayburn PA, Kraft CD, Levine RA, Nihoyannopoulos P, Otto CM, Quinones MA, Rakowski H, et al. Recommendations for evaluation of the severity of native valvular regurgitation with two-dimensional and Doppler echocardiography. *J Am Soc Echocardiogr*. 2003;16(7):777–802.
- Rahimtoola SH. The problem of valve prosthesis-patient mismatch. *Circulation*. 1978;58(1):20–4.
- Li M, Dumesnil JG, Mathieu P, Pibarot P. Impact of valve prosthesis-patient mismatch on pulmonary arterial pressure after mitral valve replacement. *J Am Coll Cardiol*. 2005;45(7):1034–40.
- Sakamoto H, Watanabe Y. Does patient-prosthesis mismatch affect long-term results after mitral valve replacement? *Ann Thorac Cardiovasc Surg*. 2010;16(3):163–7.
- Shi WY, Yap CH, Hayward PA, Dinh DT, Reid CM, Sharkey GC, Smith JA. Impact of prosthesis-patient mismatch after mitral valve replacement: a multicentre analysis of early outcomes and mid-term survival. *Heart*. 2011;97(13):1074–81.
- Blais C, Dumesnil JG, Baillot R, Simard S, Doyle D, Pibarot P. Impact of valve prosthesis-patient mismatch on short-term mortality after aortic valve replacement. *Circulation*. 2003;108(8):983–8.

16. Rao V, Jamieson WR, Ivanov J, Armstrong S, David TE. Prosthesis-patient mismatch affects survival after aortic valve replacement. *Circulation*. 2000;102(19 Suppl 3):III5–9.
17. Ruel M, Rubens FD, Masters RG, Pipe AL, Bedard P, Hendry PJ, Lam BK, Burwash IG, Goldstein WG, Brais MP, et al. Late incidence and predictors of persistent or recurrent heart failure in patients with aortic prosthetic valves. *J Thorac Cardiovasc Surg*. 2004;127(1):149–59.
18. Caldarone CA, Raghuvver G, Hills CB, Atkins DL, Burns TL, Behrendt DM, Moller JH. Long-term survival after mitral valve replacement in children aged < 5 years: a multi-institutional study. *Circulation*. 2001;104(12 Suppl 1):I143–7.
19. Friedman S, Edmunds LH Jr, Cuaso CC. Long-term mitral valve replacement in young children. Influence of somatic growth on prosthetic valve adequacy. *Circulation*. 1978;57(5):981–6.
20. Rahimtoola SH, Murphy E. Valve prosthesis–patient mismatch. A long-term sequela. *Br Heart J*. 1981;45(3):331–5.
21. Hwang HY, Kim YH, Kim KH, Kim KB, Ahn H. Patient-prosthesis mismatch after mitral valve replacement: a propensity score analysis. *Ann Thorac Surg*. 2016;101(5):1796–802.

Submit your next manuscript to BioMed Central and we will help you at every step:

- We accept pre-submission inquiries
- Our selector tool helps you to find the most relevant journal
- We provide round the clock customer support
- Convenient online submission
- Thorough peer review
- Inclusion in PubMed and all major indexing services
- Maximum visibility for your research

Submit your manuscript at
www.biomedcentral.com/submit

