

Analysis of Patient Preferences in Lung Cancer – Estimating Acceptable Tradeoffs Between Treatment Benefit and Side Effects

This article was published in the following Dove Press journal:
Patient Preference and Adherence

Ellen M Janssen ¹
Sydney M Dy²
Alexa S Meara ³
Peter J Kneuert⁴
Carolyn J Presley⁵
John FP Bridges^{6,7}

¹Center for Medical Technology Policy, Baltimore, MD, USA; ²Department of Health Policy and Management, Johns Hopkins Bloomberg School of Public Health, Baltimore, MD, USA; ³Department of Internal Medicine Division Of Rheumatology, The Ohio State University, College of Medicine, Columbus, OH, USA; ⁴Thoracic Surgery Division, Department of Surgery, The Ohio State University Wexner Medical Center, Columbus, OH, USA; ⁵Division of Medical Oncology, Department of Internal Medicine, The Ohio State University College of Medicine, Columbus, OH, USA; ⁶Department of Biomedical Informatics, The Ohio State University College of Medicine, Columbus, OH, USA; ⁷Department of Surgery, The Ohio State University College of Medicine, Columbus, OH, USA

Objective: Increased treatment options and longer survival for lung cancer have generated increased interest in patient preferences. Previous studies of patient preferences in lung cancer have not fully explored preference heterogeneity. We demonstrate a method to explore preference heterogeneity in the willingness of patients with lung cancer and caregivers to trade progression-free survival (PFS) with side effects.

Patients and Methods: Patients and caregivers attending a national lung cancer meeting completed a discrete-choice experiment (DCE) designed through a collaboration with patients. Participants answered 13 choice tasks described across PFS, short-term side effects, and four long-term side effects. Side effects were coded as a one-level change in severity (none-mild, mild-moderate, or moderate-severe). A mixed logit model in willingness-to-pay space estimated preference heterogeneity in acceptable tradeoffs (time equivalents) between PFS and side effects. The study was reported following quality indicators from the United States Food and Drug Administration's patient preference guidance.

Results: A total of 87 patients and 24 caregivers participated in the DCE. Participants would trade 3.7 month PFS (95% CI (CI): 3.3–4.1) for less severe functional long-term treatment side effects, 2.3 months for less severe physical long-term effects (CI: 1.9–2.8) and cognitive long-term effects (CI: 1.8–2.8), 0.9 months (CI: 0.4–1.4) for less severe emotional long-term effects, and 1.8 months (CI: 1.4–2.3) for less severe short-term side effects. Most participants (90%) would accept treatment with more severe functional long-term effects for 8.4 additional month PFS.

Conclusion: Participants would trade PFS for changes in short-term side effects and long-term side effects, although preference heterogeneity existed. Lung cancer treatments that offer less PFS but also less severe side effects might be acceptable to some patients.

Keywords: non-small cell lung cancer, patient preferences, discrete choice experiment, heterogeneity, long-term side effects

Highlights

- Given the increased interest in the use of patient preference information in healthcare decision-making, evidence gathered from patient preference studies should be high quality and relevant to regulatory and policymakers.
- Tradeoffs that patients are willing to make between treatment benefits and harms should be carefully considered in treatment decision-making.
- Avoiding long-term side effects is important to patients with lung cancer and long-term side effects should be considered in healthcare decision-making processes.

Correspondence: Ellen M Janssen
Research Director, Center for Medical
Technology Policy, 401 East Pratt Street,
Suite 631, Baltimore, MD 21202, USA
Tel +1 443-222-8775
Email ellen.janssen@cmtpnnet.org

- Heterogeneity in patients' preferences indicates that differences in preferences for long-term and short-term side effects should be carefully considered in treatment decision-making.

Introduction

Lung cancer is one of the most commonly diagnosed cancers in the United States (US) representing 13% of all cancer diagnoses.¹ It is estimated that more than 430,000 people in the United States are patients with lung cancer or survivors (people previously diagnosed with lung cancer currently with no evidence of disease).¹ Lung cancer is the most common cancer-related cause of death in the US; despite improvements in lung cancer treatments, there is still only a 19% overall five-year survival rate.² Only 16% of lung cancer cases are diagnosed at an early stage, where five-year survival is much higher, at 57%.³

Recent developments in lung cancer treatment algorithms, including treatments targeting genetic alterations,⁴⁻⁶ immunotherapy^{7,8} and combination therapies,^{9,10} are improving options for patients with lung cancer. In addition, early detection of lung cancer and the availability of more effective and targeted therapies may significantly improve the prognosis of future patients with lung cancer. With increased survival and length of cancer treatments, discussing long-term side effects and quality of life when making treatment decisions is of growing importance.

Interest is growing in quantifying patients' preferences for treatment for use in benefit-risk assessments and other treatment decision-making.¹¹⁻¹⁴ Much of this literature has focused on quantifying tradeoffs patients are willing to accept between treatment characteristics such as benefits and risks (maximum acceptable risk) or cost (willingness to pay).¹¹ To fully explore preferences, the different tradeoffs that different patients are willing to accept also need to be explored. Traditionally, this was done by analyzing the preferences of different patient subgroups separately through stratification analysis. However, the limitations of stratification analyses are increasingly recognized¹⁵ and there has been an increased use of more complex analytical models including mixed (or random parameter) logit models or latent class models to explore preference heterogeneity.^{11,16}

Preferences surrounding long-term side effects vs survival are largely unexplored in lung cancer treatment decision-making. Prior preference studies have mostly focused on the preferences for survival benefits and short-term risks of treatment such as nausea, rash, or diarrhea.¹⁷ Most studies have not explicitly explored the tradeoffs patients are willing

to make between benefits and risks or estimated existing preference heterogeneity.¹⁷ The studies that have explored these concepts have not combined them.¹⁸

This study sought to demonstrate a method to evaluate the importance of different treatment attributes to patients with lung cancer and caregivers. A discrete-choice experiment (DCE) was used to explore the willingness of patients with lung cancer and caregivers to trade progression-free survival (PFS) with lung cancer treatment side effects. We sought to demonstrate how to estimate the time equivalents for long-term physical, emotional, cognitive, and functional side effects, to present heterogeneity in the tradeoffs that participants would make between treatment health effects and length of disease control. The methods and findings from this study may help researchers to develop and conduct preference studies and may help clinicians consider the intricacies of tradeoffs between treatment benefits and harms that patients are willing to make. We hypothesized that patients assign importance to long-term side effects and are willing to consider tradeoffs between survival benefits and long-term side effects, but that preference heterogeneity between patients exists.

Patients and Methods

We conducted a DCE to estimate the treatment preferences of patients with lung cancer (any stage, type and treatment) and caregivers of patients with lung cancer (not grouped into dyads). DCEs are rooted in economic theory¹⁹ and are increasingly used to measure stakeholder preferences in health care.^{11,20,21} In each choice task, participants are presented with two or more treatment profiles and asked to select the profile they prefer. DCEs are a systematic method to quantify the relative preferences of participants for various treatment characteristics, or attributes, and the tradeoffs they are willing to make.

DCEs are increasingly used to inform health decisions and the US Food and Drug Administration (FDA) has released guidance on conducting studies to measure patient preference information.¹⁴ We report the study according to FDA's "study quality indicators" using italics to indicate specific indicators.¹⁴ We summarize these indicators and describe how we applied them, including our recommendations based on lessons learned in Table 1. We discuss our methods in four sections: development of the choice tasks, experimental design, participants, and analysis.

Development of the Choice Tasks

The study was conducted in accordance with the "good-research practices" and followed the ISPOR task force

Table 1 Application of Quality Indicators from FDA Patient Preference Information Guidance

Domain	Indicator	Description	Application	Recommendation
Patient-focused	Patient Centeredness	Measure preferences of well-informed patients, care partners or healthcare professionals.	Lung cancer patient advocates were involved in study conceptualization and survey development.	A study is not patient centered simply by measuring patient preferences. Patients should have input on survey design.
	Representativeness of the Sample and Generalizability	Measure preferences of a representative sample of adequate size so results can be generalized.	The study made use of a convenience sample of patient advocacy organization constituents.	Target population needs to be stated. Might not always be a national sample.
	Relevance	Measure preferences over relevant domains. The relevance of outcomes should be communicated.	Attributes were elicited through patient interviews and adapted from existing clinical outcomes.	Choose outcomes and attribute based on clinical and patient relevance. Balance interests of different stakeholders.
Choice task design	Comprehension by Study Participants	Study participants should fully understand the medical information communicated.	PFS description was updated multiple times to ensure comprehension. Color coding was used to aid comprehension.	Comprehension can be difficult to assess. Important to pre-test survey. Consider visual aids.
	Minimal Cognitive Bias	Study design should minimize potential cognitive biases (ordering/framing effect).	The choice scenario was framed to prevent personal-experience bias and to standardize choice scenario.	Study design adaptations are challenging in paper-based surveys. Standardize choice scenario across participants.
	Communication of Benefit, Harm, Risk, and Uncertainty	Define the decision context, explain attributes/levels, and conceptualize probabilities/uncertainty.	All attributes were described in lay-language and iteratively refined.	Important to pre-test attribute descriptions and communication of uncertainty.
Data quality	Established Good Research Practices	Follow guidelines for good research practices established by a recognized professional organization.	The ISPOR conjoint analysis taskforce checklist and other taskforce recommendations were followed.	Consider all aspects of study design/conduct described in good research practices before study initiation.
	Study Conduct	Compliance of research staff and study participants with the study protocol.	Participants were shown example choice tasks with instructions. Study staff were available during survey administration.	Most preference studies are self-administered, need to give clear written instructions to patients.
	Logical Soundness	Include internal-validity tests of logic and consistency.	Participants evaluated the choice tasks. No other tests of internal-validity were included.	Plan how to measure study quality before survey administration begins. Balance response burden with additional choice tasks meant to test data quality.
Analysis	Robustness of Analysis of Results	Analyses should ensure appropriate interpretation of the evidence including an exploration of uncertainty.	Time equivalence was estimated in willingness to pay space to incorporate uncertainty around preferences for all attributes.	Conduct analyses according to good research practices. MRS calculations need to account for uncertainty in denominator.
	Capturing Heterogeneity of Patients' Preferences	Consider preferences heterogeneity. Heterogeneity may be population-, condition-, treatment-specific.	A mixed logit model was estimated to examine unobserved preference heterogeneity.	Consider different methods to estimate heterogeneity based on study objective, design, and sample size.

Abbreviations: FDA, United States Food and Drug Administration; PFS, progression free survival; ISPOR, International Society for Pharmacoeconomics and Outcomes Research; TE, time equivalence; MRS, marginal rates of substitution.

guidance documents.²²⁻²⁴ The study incorporated a "patient-centered" approach (Table 1) by involving patients with lung cancer in the study conceptualization and survey development.²⁵ Survey development included a combination of qualitative methods.^{26,27} Initial attributes and levels

were identified from semi-structured interviews with members of a lung cancer patient action committee (PAC) as well as from previous patient preference studies in lung cancer.¹⁷ The initial selection of attributes and levels were incorporated into a pilot survey that was administered to 11

PAC members. Participants were given the chance to comment on the pilot survey. Pretesting interviews with four participants were conducted to explore "comprehension" of medical information provided, "communication" of attributes and levels, and whether the participants could adhere to "study conduct" by testing survey instructions.

To ensure "relevance," final attributes were adapted from and described using existing patient-reported outcomes. Attributes were adapted from domains of the FACT-L²⁸ and the quality of life model for cancer survivors.²⁹ Levels and descriptions were adapted from existing criteria.^{30,31} Six attributes were selected: PFS, short-term side effect, functional long-term side effect (functioning at work and in social situations), physical long-term side effect (physical symptoms), cognitive long-term side effect (cognitive symptoms), and emotional long-term side effect (emotional symptoms). PFS could be presented at 6, 12, and 18 months. The short-term side effect attribute could be presented at severity levels of none, mild, and moderate. The long-term side effect attributes could be presented at severity levels of mild, moderate and severe. Levels of the short-term side effect and long-term side effect attributes were color coded to visually reflect their severity to increase "comprehension" of the risk levels (Figure 1).³² The descriptions of these severity levels were based, in part, on the Common Terminology Criteria for Adverse Events (CTCAE) to ensure "relevance" to clinical outcomes.³¹

A sample DCE choice task is presented in Figure 1. Participants were presented with treatment outcomes for

You will be presented with two patients, Patient A and Patient B. You will see a summary of the outcomes each of them achieved after treatment. Person A and Person B are the same except for the outcomes listed.

Please select the person you think is better off given their treatment outcomes:

Attributes	Person A	Person B
Progression free survival	12	6
Short-term side effects	Moderate	Severe
Physical long-term effects	Mild	Moderate
Emotional long-term effects	Moderate	Mild
Cognitive long-term effects	Moderate	None
Functional long-term effects	Moderate	None
Who do you think is better off?	<input type="checkbox"/>	<input type="checkbox"/>

Figure 1 Sample DCE choice task.

two hypothetical patients who were receiving treatment for lung cancer. The treatment outcomes were the six listed above for both patients, but the levels of these outcomes differed between the two hypothetical patients. Participants were then asked to select the person they thought was better off. This third-person scenario was used to "minimize cognitive bias" from the participant's own experience and to ensure that all participants were making choices considering the same disease stage.³³⁻³⁵

From the six attributes at three levels, we could generate 729 separate profiles or more than 500,000 profile pairs. To narrow down the number of choice tasks that participants had to complete, we developed a D-efficient, main-effects experimental design using Ngene software (ChoiceMetrics).²³ This design selected 13 paired comparison choice-tasks for participants to complete. The order of attributes or choice tasks was not randomized due to challenges related to the pen-and-paper nature of the survey so cognitive bias due to ordering side effects was not

Table 2 Sample Characteristics

	Total Sample (N = 114)
Participant type – N (%)	
Patient	87 (76%)
Caregiver	24 (21%)
Gender – N (%)	
Female	80 (70%)
Age – mean (SE)	53.94 (1.16)
Years since diagnosis – mean (SE)	4.43 (0.28)
Lung cancer type	
Adenocarcinoma	81 (71%)
Other	32 (28%)
Current disease stage – N (%)	
Stage I	4 (4%)
Stage II	2 (2%)
Stage III	3 (3%)
Stage IV	53 (46%)
No evidence of disease	49 (43%)
Treatment received – N (%)	
Chemotherapy	72 (63%)
Radiation	50 (44%)
Targeted therapy	59 (52%)
Immunotherapy	15 (13%)
Surgery	54 (47%)

Note: Caregivers reported characteristics of the patients they cared for, these are the characteristics in the table.

minimized. The preference section of the survey, including attribute definitions, can be found in the [Appendix](#).

Participants and Survey Administration

The target population of this survey was patients with lung cancer and their caregivers that were constituents of a US-based lung cancer patient advocacy organization. To ensure "representativeness" (Table 2) of the study population, the survey was administered at a multi-day meeting organized by this lung cancer patient advocacy organization using a Research as an Event model.³⁶ Meeting attendees were eligible to complete the survey if they had been diagnosed with lung cancer and/or were the caregiver for someone with lung cancer (any stage, type, and treatment). Caregivers provided responses on disease history for the patient for whom they provided care. Meeting attendees had to be 18 years or older and able to read the survey in English. Healthcare providers were not eligible to participate, unless they were also the caregiver of a patient with lung cancer in their personal life or had been diagnosed with lung cancer. Meeting attendees were given a pen-and-paper survey in their registration packets. This survey also included a link to an online platform where participants could take the survey online. To ensure appropriate "study conduct," members of the study team were available at the meeting to answer any questions.

In addition to the DCE, the survey asked the participants to evaluate the acceptability of the DCE choice tasks using three questions on a 5-point Likert scale ranging from strongly disagree to strongly agree. These acceptability measures were used to evaluate the "logical soundness" of the results. In accordance with previous publications, 75% of participants needed to answer "agree" or "strongly agree" for each acceptability question to be met.³⁷ The survey also asked about demographic information and disease history. Participants were not compensated for completing the survey. The title page of the survey provided participants with study information. On this page, they were informed that continuing with the survey and submitting it to the study staff demonstrated implied consent. The Johns Hopkins School of Public Health institutional review board deemed the semi-structured interviews, pilot survey, and final survey to be exempt from human subjects review (IRB 6404; IRB 6948).

Analysis

Analytic Model

Stated-preference results are often based on a Random Utility model¹⁹ which has been extensively used to analyze

individual choice data. In this model, a treatment is divided into different treatment characteristics. The utility (U) a participant (N) obtains from choosing a treatment (j) is dependent on the combined utility the participant obtains from the different characteristics of this treatment and a random error (ε). In this study, we divide the characteristics of treatment into a vector of short-term side-effects and long-term side effects (X) and in a progression-free survival (PFS) time benefit T . Then:

$$U_{nj} = \frac{\alpha_n}{\mu_n} X_{nj} + \frac{\beta_n}{\mu_n} T_{nj} + \varepsilon_{nj} \quad (1)$$

α represents utility the participant gets from the short-term side effect and long-term side effect attributes, and β represents the utility the participant gets from the progression-free survival attribute. μ_n is an individual-specific variance-scale parameter; a larger μ_n indicates that the participant is less consistent in how they answer the preference choice tasks. α and β are often referred to as preference estimates, although it can be difficult to separate the preference estimates from variance-scale³⁸.

The marginal rate of substitution is the rate at which someone can give up some amount of one good in exchange for another good and maintain the same level of utility. Time equivalents (TEs) represent the marginal rate of substitution between the time attribute and another treatment characteristic. They can be interpreted as the number of months that the participant would trade for the change in the other treatment characteristic. TEs are generally estimated by first estimating the utility model described above and then taking the ratio of the preference estimate of the non-time attribute to the preference estimate of the time attribute (this method is similar to how willingness-to-pay (WTP) is calculated).^{39,40}

$$TE_n = w_n = \frac{\alpha_n/\mu_n}{\beta_n/\mu_n} = \frac{\alpha_n}{\beta_n} \quad (2)$$

Calculating estimates of measurement error, such as confidence intervals (CIs) for ratios of random variables, can be challenging. Issues with ratios have been mostly examined within a cost-effectiveness and WTP framework,^{41,42} but the same principles apply when calculating TEs. Various methods, including the delta, Fieller, Krinsky-Robb, and bootstrap methods, to calculate CIs for ratios obtained from stated-preference methods have been examined.⁴³

The preference estimates needed to estimate TEs can be estimated through a variety of methods, but the mixed logit model, or random parameters logit model, provides a "robust analysis" and is becoming increasingly

popular^{11,20,21} The mixed logit model captures "preference heterogeneity" across participants by assuming that the independent variables vary across individuals according to a continuous distribution.⁴⁴ The model provides mean coefficients as well as a measure of the distribution around the mean coefficient in the form of a standard deviation (SD). A statistically significant SD might indicate that there is significant preference heterogeneity for that attribute.

However, the mixed logit model adds an additional level of complexity to estimating TEs as it estimates the distribution around the mean preference estimates. The TEs from a mixed logit model are therefore given by the ratio of two randomly distributed parameters; depending on the distributions of the numerator and denominator, the distribution of the TE estimates might be heavily skewed or might be undefined.⁴⁵ Different approaches, such as assuming that the denominator coefficient (time) is a fixed variable, have been used to circumvent this problem, but these approaches are often suboptimal.⁴⁵

An approach to circumvent these problems is to estimate the Time Equivalents directly. In the WTP literature, this approach is generally referred to as estimating in WTP space.^{40,45,46} In this approach, the researcher can make an a-priori assumptions about the distributions of the TE estimates rather than about the preference estimates. Let us denote $\frac{\alpha_n}{\mu_n}$ from equation 3 as c_n and $\frac{\beta_n}{\mu_n}$ as λ_n . Then, equation 3 simplifies to:

$$U_{nj} = c_n X_{nj} + \lambda_n T_{nj} + \varepsilon_{nj} \quad (3)$$

Then, we can derive the TE through: $\frac{c_n}{\lambda_n} = \frac{\frac{\alpha_n}{\mu_n}}{\frac{\beta_n}{\mu_n}} = \frac{\alpha_n}{\beta_n} = w_n = TE_n$ (4) and

$$U_{nj} = \lambda_n [w_n X_{nj} + T_{nj}] + \varepsilon_{nj} \quad (5)$$

λ_n , the time coefficient, incorporates any differences in variance-scale across respondents, while w_n , the TE coefficients are variance-scale free. While the utility expressions in Equation (1) and (5) are equivalent, equation (5) allows us to specify distributions for the TEs (w_n) directly, circumventing some of the issues discussed above.^{40,45,46}

Empirical Estimation

We applied "robust analyses: according to "good research practices."²⁴ Data were analyzed in Stata 13 (College Station, TX). Time equivalents were directly estimated using the `mixlogitwtp` command as described above. This command uses maximum-simulated likelihood to account for "preference heterogeneity" by assuming that the TEs vary across individuals according to a continuous distribution.⁴⁴ In this

study, the estimated TEs represent the number of additional months of PFS that participants deemed equivalent to a one-level change in the severity of a side effect (from none to mild, mild to moderate, or moderate to severe). The time equivalents can be interpreted as the additional number of months of PFS that a participant needs to be compensated with to be willing to accept a medication with a one-level higher severity of a side effect. It can also be interpreted as the number of months of PFS that participants would be willing to give up for a treatment with a one-level lower severity of a side effect.

The dependent variable in the model was a binary variable that indicated whether a treatment profile was chosen as preferred or not. Independent variables were the attributes presented in each profile. All independent variables were coded as continuous (for the side effect attributes, 0 = none, 1 = mild, 2 = moderate, 3 = severe). TEs were assumed to follow a log-normal distribution. The log-normal distributions around the mean TEs were used to calculate the probability that a given number of additional months of PFS would be enough to compensate for a one-level increase in the severity of a side effect.

These results were used to create acceptability curves that demonstrate unobserved preference heterogeneity between participants and to explore uncertainty. The acceptability curves demonstrate the probability that a participant would accept a treatment with a one-level increase (from none to mild, mild to moderate, or moderate to severe) in the severity of a side effect if it provided a certain TE of additional months of PFS. Alternatively, it can be interpreted as the proportion of participants that would accept a treatment with a one-level increase in severity for a certain additional TE of months of PFS.

Results

Participants

In total, 200 patients and 100 caregivers registered for the meeting of which 87 patients (response rate: 44%) and 24 caregivers (response rate: 24%) completed the survey, 3 participants did not answer whether they were patients or caregivers. All participants completed the survey with pen and paper, except for one participant who completed the survey online. Participant characteristics are summarized in Table 2.

On average patients (either patient respondents or those that the caregivers cared for) had been diagnosed 4.4 years ago and 72% had been diagnosed with adenocarcinoma. Most patients were in Stage IV (47.3%) or had no evidence of disease (43.8%). More than 60% of patients had received

Table 3 Time Equivalent Estimates

		Time Equivalent (in Months)	95% Confidence Interval
Short-term side effects	Mean	1.8	(1.4,2.3)
	SD	1.3	(0.3,2.3)
Functional long-term effects	Mean	3.7	(3.3,4.1)
	SD	8.8	(3.7,13.8)
Physical long-term effects	Mean	2.3	(1.9,2.8)
	SD	2.0	(1.3,2.7)
Cognitive long-term effects	Mean	2.3	(1.8,2.8)
	SD	1.5	(0.6,2.5)
Emotional long-term effects	Mean	0.9	(0.4,1.4)
	SD	0.8	(0.4,1.3)

chemotherapy and more than half had received targeted therapy.

Most participants (77%) strongly agreed or agreed that the DCE choice tasks were easy to understand, 54% strongly agreed that they were easy to answer, and 89% of participants strongly agreed they answered the questions consistent with their preferences, meeting the threshold for two out of three acceptability questions.³⁷ Of 114 participants, 102 (89.4%) completed all choice tasks. No significant difference was identified between those who did and did not complete all choice tasks for all observed characteristics.

Time Equivalents

Table 3 presents the time equivalents (TE) estimated using the mixed logit model. On average, participants would trade the most PFS for a one-level reduction (going from severe to moderate, moderate to mild, or mild to none) in the severity of functional long-term effects; on average, they would accept a mean TE of 3.7 fewer month PFS (95% CI (CI): 3.3–4.1) if a treatment offered a one-level reduction in the severity of functional long-term effect (from severe to moderate, moderate to mild, or mild to none). Participants would trade the least PFS for a one-level change in the severity of emotional long-term effects (mean TE: 0.9 month PFS, CI: 0.4–1.4). Participants would trade 2.3 months (CI: 1.9–2.8) for a one-level change in the severity of physical long-term side effects, 2.3 months (CI: 1.8–2.8) for a one-level change in the severity of cognitive long-term side effects (mean TE: 2.3 months, CI: 1.8–2.8), and 1.8 months (CI: 1.4, 2.3)

for a one-level change in the severity of short-term side effects.

Figure 2 presents an acceptability curve for the time equivalents (TEs) of the various long-term side effects. Functional long-term side effects showed the most preference heterogeneity, or variability in preferences (SD of the TE: 8.8); 90% of participants would accept a treatment with a one-level increase in functional long-term treatments effects for the TE of 8.4 additional months of PFS. Emotional long-term side effects showed the least preference heterogeneity (SD of the TE: 0.8); 90% of participants would accept treatment with a one-level increase in emotional long-term side effects for 1.7 months of PFS. In addition, 90% of participants would accept treatment with a one-level increase in physical long-term side effects for an additional 4.6 month of PFS, and an increase in cognitive long-term side effects for 4.0 months of PFS.

Discussion

In this study, participants would accept treatments with fewer months of PFS for reductions in both short-term side effects and long-term side effects. Given the increased interest in the use of patient preference information in a healthcare decision-making setting,^{47,48} it is important that evidence gathered from patient preference studies is high quality and relevant.¹⁴ Studies, therefore, need to follow good research practices and present patient preference data in policy-relevant ways. By designing and reporting this study using the FDA study quality indicators, we ensured that important components of the stated-preference study design were considered and transparently reported.

We categorized the 11 study quality indicators into four categories: patient-focused, choice task design, data quality, and analysis. In terms of conducting a patient-focused study, our survey was developed in collaboration with patients and a patient-advocacy organization. In addition, it was important to clearly state the study's target population and to choose attributes that are both clinically relevant and important to patients. While considering choice task design, it was important to pre-test the survey to ensure comprehension of the attribute descriptions and descriptions of uncertainty, and how to complete the choice tasks. Because the survey was administered via pen-and-paper, the survey could not be customized based on different responses; it is, therefore, important to adapt the survey design to the mode of administration. To ensure data quality, we followed good research practices through the design, conduct, and

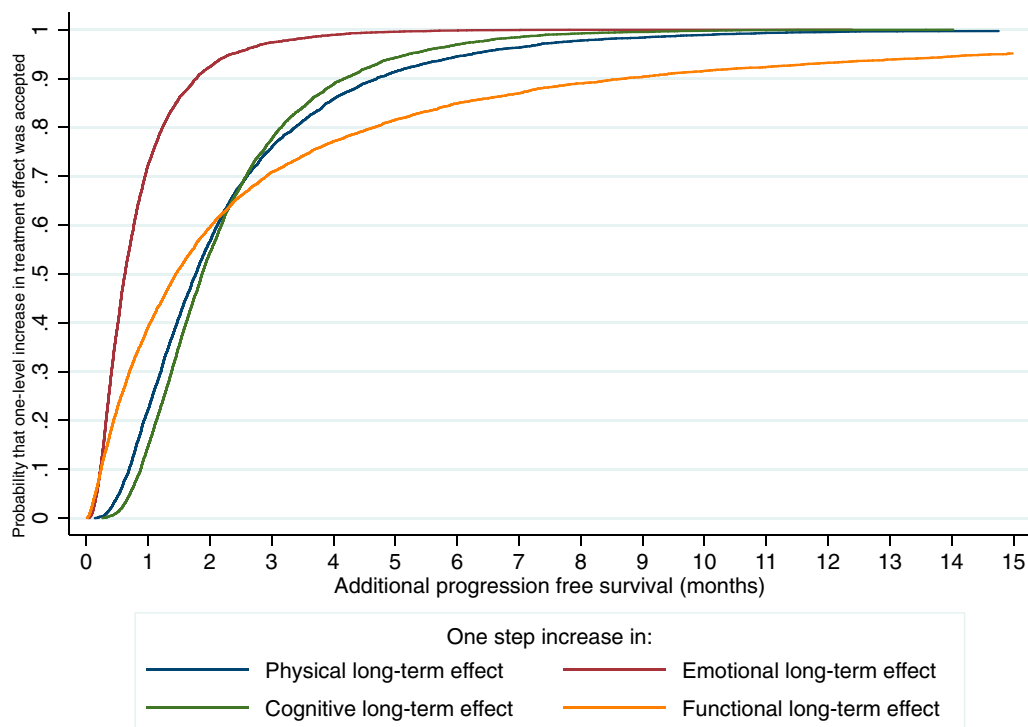


Figure 2 Time equivalent acceptability curve.

analysis of the study. In addition, we included the DCE acceptability questions to be able to measure data quality but did not include additional choice tasks to limit the response burden. We also found that, because most preference surveys are self-administered, it is very important to ensure that all instructions are clearly written and easy to understand. Finally, we conducted all analyses according to good research practices which included accounting for uncertainty in the parameters and preference heterogeneity. While there are many different ways to conduct a patient preference study,⁴⁹ it is important that quality indicators and good research practices are carefully considered in the study design and planning phase before the study is actually conducted.

By including various domains of long-term side effects, the study showed that study participants were able to distinguish between and have different preferences for the different types of long-term side effects. The results show that a general short-term side effects attribute was valued less than three out of the four long-term side effects. This might suggest that treatments with significant short-term side effects are more acceptable to patients than treatments with significant long-term side effects and that long-term side effects need to be carefully considered in treatment decisions.

We describe preference heterogeneity in a novel way by presenting acceptability curves with the percentage of participants that are willing to accept a treatment associated with a one-level more severe long-term side effect if it provides additional months of PFS. Given that preference heterogeneity is of increased interest in healthcare decision-making,¹³ effective and concise ways to model and present heterogeneity of tradeoffs are needed. Further avenues for presenting trade-offs and preference heterogeneity for non-stated-preference experts should be explored, especially as these results might become more important in healthcare decision-making processes ranging from regulatory to clinical decisions. Due to the relatively low sample size of this study, we were not able to formally conduct further heterogeneity analyses such as stratifying the sample to explore differences between patients and caregivers or to identify characteristics of clusters of participants with the similar preferences using latent class analysis. Further studies with larger sample sizes should be done to explore heterogeneity for lung cancer treatment preferences through stratification analyses and/or scale adjusted latent class analyses.⁵⁰

Mühlbacher et al (2015)¹⁸ showed that participants would give up time without tumor progression (7.01 months) for an improvement in tumor-related symptoms. However, tumor-related symptoms were purposefully

excluded from this study as Bridges et al (2012)³³ showed that the severity of tumor-related symptoms is related to preferences for PFS; in that, study participants actually preferred less PFS when tumor-related symptoms were severe. The participants in this study would give up 3.66 months of PFS for a decrease from severe to mild short-term side effects. Participants in Mühlbacher et al's study would generally give up a similar number of months without tumor progression for a decrease from severe to mild for particular types of short-term side effects (between 2.72 months for a decrease in tiredness/fatigue and 3.90 months for a decrease in nausea and vomiting). However, since this study included a composite short-term side effect and long-term side effect attributes these results are difficult to compare.

Like previous preference studies in lung cancer,¹⁷ this study used the surrogate endpoint of PFS to represent treatment effectiveness. Using overall survival (OS) as an attribute in the DCE may lead to dominating preferences; participants will only focus on OS and will not pay attention to the other attributes included. Therefore, PFS, which is also often used as an endpoint in clinical trials, was chosen as a benefit attribute. How to best explain PFS to patients requires further exploration,⁵¹ but in our survey development process, the definition of PFS was tested with lung cancer patients and was found to be acceptable.

This study has several limitations. First, it made use of a relatively small, convenience sample of people with lung cancer and their caregivers that attended a national meeting for patients with lung cancer. Participants were actively engaged with a patient advocacy organization, and at least healthy enough to travel to the meeting. We did not sample sicker individuals or caregivers of people that had passed away. Furthermore, participants had been diagnosed a relatively long time ago (on average 4.4 years ago). Participants were therefore likely to be healthier and more engaged and have different treatment and disease experiences than the average patient. However, by administering the survey at this national meeting, we took advantage of a dense concentration of a hard-to-reach patient population. Second, the study sample was composed of a clinically heterogeneous group of patients with lung cancer with potentially very different preferences. Participant had been diagnosed with different types of lung cancer, were at different disease stages, and had undergone different treatments. Caregivers were also included in the sample contributing to further heterogeneity. Third, the study departed from the FACT-L²⁸ and the quality of life model

for cancer survivors²⁹ by including cognitive side effects and the omitting social and spiritual domains. Cognitive side effects were added based on reports from patients with lung cancer during instrument development about "chemo brain" or clear thinking. The social and spiritual domains were omitted because it would have been difficult to attribute these to cancer treatment. Fourth, treating the short-term side effect and long-term side-effects attributes as continuous resulted in a parsimonious model. However, because of this specification, we did not explore whether patients assigned different time equivalence estimates to a change from a severe to a moderate side effect or a change from a moderate to a mild side effect. Rather, the model assumed that patients assigned the same importance to both changes. Fifth, this survey only met two out of three acceptability measures using the 75% threshold.³⁷ Less than 75% of participants agreed or strongly agreed that the choice tasks were easy to answer, which is also lower than other studies that have used this scale.^{37,52}

Conclusion

In this study of patients with lung cancer and caregivers' preferences, we estimated disease progression-free time equivalents patients would trade for experiencing higher severity of long-term treatment side effects. Longest time equivalents were calculated for long-term functional side effects, followed by long-term physical side effects, and shortest for long-term emotional side effects. Calculating time equivalents for reductions in treatment harms might provide a valuable approach to evaluate current and future lung cancer treatments by determining the acceptability of the side effects with regards to survival gains for patients. The findings in this study can serve to inform further studies that examine patients' preferences and willingness to trade between the survival benefits of cancer treatment and short-term side effects and different types of long-term side effects.

Acknowledgments

The authors sincerely thank LUNGeivity and the members of the Patient Action Committee (PAC) for their participation, engagement, and valuable contributions to Project Transform.

Compliance with Ethical Standards

This work was supported by LUNGeivity (with funding from Celgene). Celgene had no influence on the design of the project, data collection, analysis, interpretation, or

writing of the report. The authors report no potential conflicts of interest. This research was conducted in accordance with the Declaration of Helsinki, and the study protocol was reviewed by the Johns Hopkins Institutional Review Board (IRB 6404).

Disclosure

The abstract of this paper was presented at the IASLC 17th World Conference on Lung Cancer as a poster presentation/conference talk with interim findings. The poster's abstract was published in the *Journal of Thoracic Oncology*: DOI: <https://doi.10.1016/j.jtho.2016.11.2197>.

Dr Carolyn J Presley reports other funding from Potential Metrics, outside the submitted work. Dr. Presley is a Paul Calabresi Scholars supported by the OSU K12 Training Grant for Clinical Faculty Investigators (5K12 CA133250-09). Dr John FP Bridges reports grants from LUNGeVity, personal fees, non-financial support from AstraZeneca, during the conduct of the study. The authors have no other competing interests to declare.

References

- American Cancer Society. Key statistics for lung cancer; 2019. Available from: <https://www.cancer.org/cancer/non-small-cell-lung-cancer/about/key-statistics.html>. Accessed July 12,2019.
- Siegel RL, Miller KD, Jemal A. Cancer statistics. *CA Cancer J Clin*. 2019;69:7–34. doi:10.3322/caac.21551
- National Cancer Institut. Surveillance, epidemiology, and end results program; 2019. Available from: <https://seer.cancer.gov/statfacts/html/lungb.html>. Accessed Jul 12,2019.
- Solomon BJ, Mok T, Kim DW, et al. First-line crizotinib versus chemotherapy in ALK-positive lung cancer. *N Engl J Med*. 2014;371:2167–2177. doi:10.1056/NEJMoa1408440
- Jiang T, Su C, Ren S, et al. A consensus on the role of osimertinib in non-small cell lung cancer from the AME lung cancer collaborative group. *J Thorac Dis*. 2018;10:3909–3921. doi:10.21037/jtd.2018.07.61
- Takeda M, Nakagawa K. First and second-generation EGFR-TKIs are all replaced to osimertinib in chemo-naive EGFR mutation-positive non-small cell lung cancer? *Int J Mol Sci*. 2019;20:146. doi:10.3390/ijms20010146
- Garon EB, Rizvi NA, Hui R, et al. Pembrolizumab for the treatment of non-small-cell lung cancer. *N Engl J Med*. 2015;372:2018–2028. doi:10.1056/NEJMoa1501824
- Borghaei H, Paz-Ares L, Horn L, et al. Nivolumab versus docetaxel in advanced nonsquamous non-small-cell lung cancer. *N Engl J Med*. 2015;373:1627–1639. doi:10.1056/NEJMoa1507643
- Reck M, Mellemaard A. Emerging treatments and combinations in the management of NSCLC: clinical potential of nintedanib. *Biologics*. 2015;9:47–56. doi:10.2147/BTT.S57356
- Scagliotti GV, Gaafar R, Nowak AK, et al. Nintedanib in combination with pemetrexed and cisplatin for chemotherapy-naive patients with advanced malignant pleural mesothelioma (LUME-Meso): a double-blind, randomised, placebo-controlled phase 3 trial. *Lancet Respir Med*. 2019;7:569–580. doi:10.1016/S2213-2600(19)30139-0
- Soekhai V, de Bekker-grob EW, Ellis AR, Vass CM. Discrete choice experiments in health economics: past, present and future. *Pharmaco Econ*. 2019;37:201–226.
- Jackson Y, Janssen E, Fischer R, et al. The evolving role of patient preference studies in health-care decision-making, from clinical drug development to clinical care management. *Expert Rev Pharmacoecon Outcomes Res*. 2019;1–14.
- de Bekker-grob EW, Berlin C, Levitan B, et al. Giving patients' preferences a voice in medical treatment life cycle: the PREFER public-private project. *Patient*. 2017;10:263–266. doi:10.1007/s40271-017-0222-3
- US Food and Drug Administration, Center for Devices and Radiological Health, Center for Drug Evaluation and Research . Patient preference information–voluntary submission, review in pre-market approval applications, humanitarian device exemption applications, and de novo requests, and inclusion in decision summaries and device labeling. Guidance for industry, food and drug administration staff, and other stakeholders. 2016.
- Janssen EM, Longo DR, Bardsley JK, Bridges JF. Education and patient preferences for treating type 2 diabetes: a stratified discrete-choice experiment. *Patient Prefer Adherence*. 2017;11:1729–1736. doi:10.2147/PPA.S139471
- Zhou M, Thayer WM, Bridges JFP. Using latent class analysis to model preference heterogeneity in health: a systematic review. *Pharmaco Econ*. 2018;36:175–187. doi:10.1007/s40273-017-0575-4
- Schmidt K, Damm K, Prenzler A, Golpon H, Welte T. Preferences of lung cancer patients for treatment and decision-making: a systematic literature review. *Eur J Cancer Care Engl*. 2016;25:580–591. doi:10.1111/ecc.12425
- Muhlbacher AC, Bethge S. Patients' preferences: a discrete-choice experiment for treatment of non-small-cell lung cancer. *Eur J Health Econ*. 2015;16:657–670. doi:10.1007/s10198-014-0622-4
- McFadden D. Conditional logit analysis of qualitative choice behavior. In: Zarembka P, editor. *Front. Econom*. New York: Academic Press; 1974:105–142.
- Clark MD, Determann D, Petrou S, Moro D, de Bekker-grob EW. Discrete choice experiments in health economics: a review of the literature. *Pharmacoeconomics*. 2014;32:883–902. doi:10.1007/s40273-014-0170-x
- de Bekker-grob EW, Ryan M, Gerard K. Discrete choice experiments in health economics: a review of the literature. *Health Econ*. 2012;21:145–172. doi:10.1002/hec.1697
- Bridges JFP, Hauber AB, Marshall D, et al. Conjoint analysis applications in health—a checklist: a report of the ISPOR good research practices for conjoint analysis task force. *Value Health*. 2011;14:403–413. doi:10.1016/j.jval.2010.11.013
- Johnson FR, Lancsar E, Marshall D, et al. Constructing experimental designs for discrete-choice experiments: report of the ISPOR conjoint analysis experimental design good research practices task force. *Value Health*. 2013;16:3–13. doi:10.1016/j.jval.2012.08.2223
- Hauber AB, Gonzalez JM, Groothuis-Oudshoorn CGM, et al. Statistical methods for the analysis of discrete choice experiments: a report of the ISPOR conjoint analysis good research practices task force. *Value Health*. 2016;19:300–315. doi:10.1016/j.jval.2016.04.004
- Bridges JFP, Janssen EM, Ferris A, Dy SM. Project transform: engaging patient advocates to share their perspectives on improving research, treatment and policy. *Curr Med Res Opin*. 2018;34:1755–1762. doi:10.1080/03007995.2018.1440199
- Janssen EM, Bridges JFP. Art and science of instrument development for stated-preference methods. *Patient*. 2017;10:377–379. doi:10.1007/s40271-017-0261-9
- Janssen EM, Segal JB, Bridges JFP. A framework for instrument development of a choice experiment: an application to type 2 diabetes. *Patient Patient Centered Outcomes Res*. 2016;9:465–479. doi:10.1007/s40271-016-0170-3
- Cella DF. The functional assessment of cancer therapy-lung (FACT-L) quality of life instrument. *Assess Qual Life Patients Lung Cancer Guide Clin*. 1995.

29. Dow KH, Ferrell BR, Leigh S, Ly J, Gulasekaram P. An evaluation of the quality of life among long-term survivors of breast cancer. *Breast Cancer Res Treat.* 1996;39:261–273
30. Basch E, Reeve BB, Mitchell SA, et al. Development of the National Cancer Institute's patient-reported outcomes version of the common terminology criteria for adverse events (PRO-CTCAE). *J Natl Cancer Inst.* 2014;106:dju244–dju244. doi:10.1093/jnci/dju244
31. National Cancer Institute. *Common Terminology Criteria for Adverse Events (CTCAE), Version 4.0.* National Cancer Institute; 2009.
32. Jonker MF, Donkers B, de Bekker-grob EW, Stolk EA. Effect of level overlap and color coding on attribute non-attendance in discrete choice experiments. *Value Health J Int Soc Pharmacoecon Outcomes Res.* 2018;21:767–771. doi:10.1016/j.jval.2017.10.002
33. Bridges JF, Mohamed AF, Finern HW, Woehl A, Hauber AB. Patients' preferences for treatment outcomes for advanced non-small cell lung cancer: a conjoint analysis. *Lung Cancer.* 2012;77:224–231. doi:10.1016/j.lungcan.2012.01.016
34. Bridges JF, Kinter ET, Schmeding A, Rudolph I, Muhlbacher A. Can patients diagnosed with schizophrenia complete choice-based conjoint analysis tasks? *Patient.* 2011;4:267–275. doi:10.2165/11589190-000000000-00000
35. Hauber AB, Mohamed AF, Johnson FR, Oyelowo O, Curtis BH, Coon C. Estimating importance weights for the IWQOL-Lite using conjoint analysis. *Qual Life Res.* 2010;19:701–709. doi:10.1007/s11136-010-9621-9
36. Tsai J-H, Janssen E, Bridges JF. Research as an event: a novel approach to promote patient-focused drug development. *Patient Prefer Adherence.* 2018;12:673–679. doi:10.2147/PPA.S153875
37. Bridges JFP, Tsai J-H, Janssen E, Crossnohere NL, Fischer R, Peay H. How do members of the duchenne and becker muscular dystrophy community perceive a discrete-choice experiment incorporating uncertain treatment benefit? An application of research as an event. *Patient.* 2019;12:247–257. doi:10.1007/s40271-018-0330-8
38. Hess S, Rose JM. Can scale and coefficient heterogeneity be separated in random coefficients models? *Transportation.* 2012;39:1225–1239. doi:10.1007/s11116-012-9394-9
39. Johnson FR, Hauber AB, Ozdemir S. Using conjoint analysis to estimate healthy-year equivalents for acute conditions: an application to vasomotor symptoms. *Value Health.* 2009;12:146–152. doi:10.1111/j.1524-4733.2008.00391.x
40. Train K, Weeks M. Discrete choice models in preference space and willingness-to-pay space. In: Scarpa R, Alberini A, editors. *Applications of Simulation Methods in Environmental and Resource Economics.* Netherlands, Dordrecht: Springer; 2005:1–16.
41. Chaudhary MA, Stearns SC. Estimating confidence intervals for cost-effectiveness ratios: an example from a randomized trial. *Stat Med.* 1996;15:1447–1458. doi:10.1002/(SICI)1097-0258(19960715)15:13<1447::AID-SIM267>3.0.CO;2-V
42. Briggs AH, Mooney CZ, Wonderling DE. Constructing confidence intervals for cost-effectiveness ratios: an evaluation of parametric and non-parametric techniques using Monte Carlo simulation. *Stat Med.* 1999;18:3245–3262. doi:10.1002/(SICI)1097-0258(19991215)18:23<3245::AID-SIM314>3.0.CO;2-2
43. Hole AR. A comparison of approaches to estimating confidence intervals for willingness to pay measures. *Health Econ.* 2007;16:827–840. doi:10.1002/hec.1197
44. McFadden D, Train KE. Mixed MNL models for discrete response. *J Appl Econom.* 2000;15:447–470. doi:10.1002/1099-1255(200009/10)15:5<447::AID-JAE570>3.0.CO;2-1
45. Hole AR, Kolstad JR. Mixed logit estimation of willingness to pay distributions: a comparison of models in preference and WTP space using data from a health-related choice experiment. *Empir Econ.* 2012;42:445–469. doi:10.1007/s00181-011-0500-1
46. Scarpa R, Thiene M, Train K. Utility in willingness to pay space: a tool to address confounding random scale effects in destination choice to the alps. *Am J Agric Econ.* 2008;90:994–1010. doi:10.1111/j.1467-8276.2008.01155.x
47. Johnson FR, Zhou M. Patient preferences in regulatory benefit-risk assessments: a US perspective. *Value Health.* 2016;19:741–745. doi:10.1016/j.jval.2016.04.008
48. Mott DJ. Incorporating quantitative patient preference data into healthcare decision making processes: is HTA falling behind? *Patient.* 2018;12(3):249–252. doi:10.1007/s40271-018-0305-9
49. Soekhai V, Whichello C, Levitan B, et al. Methods for exploring and eliciting patient preferences in the medical product lifecycle: a literature review. *Drug Discov Today.* 2019;24:1324–1331. doi:10.1016/j.drudis.2019.05.001
50. Magidson J, Vermunt K. Removing the scale factor confound in multinomial logit choice models to obtain better estimates of preference. Sawtooth software conference; October, 2007.
51. Raphael MJ, Robinson A, Booth CM, et al. The value of progression-free survival as a treatment end point among patients with advanced cancer: a systematic review and qualitative assessment of the literature. *JAMA Oncol.* 2019;5:1779. doi:10.1001/jamaoncol.2019.3338
52. Janssen EM, Hauber AB, Bridges JFP. Conducting a discrete-choice experiment study following recommendations for good research practices: an application for eliciting patient preferences for diabetes treatments. *Value Health J Int Soc Pharmacoecon Outcomes Res.* 2018;21:59–68. doi:10.1016/j.jval.2017.07.001

Patient Preference and Adherence

Publish your work in this journal

Patient Preference and Adherence is an international, peer-reviewed, open access journal that focuses on the growing importance of patient preference and adherence throughout the therapeutic continuum. Patient satisfaction, acceptability, quality of life, compliance, persistence and their role in developing new therapeutic modalities and compounds to optimize clinical outcomes for existing disease

states are major areas of interest for the journal. This journal has been accepted for indexing on PubMed Central. The manuscript management system is completely online and includes a very quick and fair peer-review system, which is all easy to use. Visit <http://www.dovepress.com/testimonials.php> to read real quotes from published authors.

Submit your manuscript here: <https://www.dovepress.com/patient-preference-and-adherence-journal>

Dovepress