




Patterns of antidepressant therapy and clinical outcomes among ischaemic stroke survivors

Mark R Etherton ¹, Shreyansh Shah ², Xu Haolin ³, Ying Xian,^{2,3} Lesley Maisch,⁴ Deidre Hannah,⁴ Brianna Lindholm,⁴ Barbara Lytle,³ Laine Thomas,³ Eric E Smith,⁵ Gregg C Fonarow,⁶ Lee H Schwamm,¹ Deepak L Bhatt,⁷ Adrian F Hernandez,⁸ Emily C O'Brien⁹

To cite: Etherton MR, Shah S, Haolin X, *et al.* Patterns of antidepressant therapy and clinical outcomes among ischaemic stroke survivors. *Stroke & Vascular Neurology* 2021;**6**: e000691. doi:10.1136/svn-2020-000691

► Additional material is published online only. To view please visit the journal online (<http://dx.doi.org/10.1136/svn-2020-000691>).

Received 19 October 2020
Revised 10 November 2020
Accepted 25 November 2020
Published Online First
1 February 2021

ABSTRACT

Background and purpose Depression is common after stroke and is often treated with antidepressant medications (AD). ADs have also been hypothesised to improve stroke recovery, although recent randomised trials were neutral. We investigated the patterns of in-hospital AD initiation after ischaemic stroke and association with clinical and readmission outcomes.

Methods All Medicare fee-for-service beneficiaries aged 65 or older hospitalised for ischaemic stroke in participating Get With The Guidelines-Stroke hospitals between April and December 2014 were eligible for this analysis. Outcome measures included days alive and not in a healthcare institution (home time), all-cause mortality and readmission within 1-year postdischarge. Propensity score (PS)-adjusted logistic regression models were used to evaluate the associations between AD use and each outcome measure. We also compared outcomes in patients prescribed selective serotonin reuptake inhibitors (SSRIs) AD versus those prescribed non-SSRI ADs.

Results Of 21 805 AD naïve patients included in this analysis, 1835 (8.4%) were started on an AD at discharge. Patients started on an AD had higher rates of depression and prior ischaemic stroke, presented with higher admission National Institutes of Health Stroke Scale score and were less likely to be discharged home. Similarly, patients started on an SSRI had lower rates of discharge to home. Adjusting for stroke severity, patients started on an AD had worse all-cause mortality, all-cause readmission, major adverse cardiac events, readmission for depression and decreased home-time. However, AD use was also associated with an increased risk for the sepsis, a falsification endpoint, suggesting the presence of residual confounding.

Conclusions Patients with ischaemic stroke initiated on AD therapy are at increased risk of poor clinical outcomes and readmission even after PS adjustment, suggesting that poststroke depression requiring medication is a poor prognostic sign. Further research is needed to explore the reasons why depression is associated with worse outcome, and whether AD treatment modifies this risk or not.

INTRODUCTION

Depression is a common complication of stroke that is associated with poor functional outcomes and increased mortality.^{1–4} The

use of antidepressant medications (ADs) to treat poststroke depression, therefore, holds potential to improve neuropsychiatric outcomes.^{5,6} Beyond the treatment of poststroke depression, ADs have also been hypothesised to improve stroke functional recovery, but without definitive evidence so far from clinical trials. In animal models of stroke, ADs attenuate infarct growth, promote neurogenesis and have neuroprotective effects.^{7–11} Early-stage clinical investigations of acute and chronic stroke patients treated with selective serotonin reuptake inhibitors (SSRIs) have also shown favourable associations with neuroplasticity and motor recovery.^{12–16} Larger scale clinical trials investigating SSRIs for improving post-stroke functional outcomes, including three phase 3 randomised controlled trials of fluoxetine after ischaemic or haemorrhagic stroke (FOCUS, EFFECTS and AFFINITY), however, showed fluoxetine treatment was associated with increased risk of fractures and no improvement of functional outcomes.^{17–19} The results of these large, randomised controlled trials suggest that SSRI treatment does not significantly improve functional outcomes poststroke. If ADs improve neuropsychiatric outcomes after ischaemic stroke, however, then they may be associated with better discharge and clinical outcomes including lower risk of hospital readmission.

We have previously shown using a local Get With The Guidelines-Stroke (GWTG-Stroke) Registry that AD or SSRI use prior to hospitalisation for ischaemic stroke was associated with lower rates of discharge to home despite no difference in admission stroke severity.²⁰ In this study, we investigated national patterns of AD prescription on discharge and the association between ADs with long-term outcomes at 1-year poststroke.



© Author(s) (or their employer(s)) 2021. Re-use permitted under CC BY-NC. No commercial re-use. See rights and permissions. Published by BMJ.

For numbered affiliations see end of article.

Correspondence to
Dr Mark R Etherton;
metherton@partners.org

METHODS

Study population

All data and materials used for this analysis are available from the GWTG-Stroke Registry. Data collection and case ascertainment from the national GWTG-Stroke Registry have been described previously.^{21 22} In brief, all patients aged 65 or older enrolled in a fully participating GWTG-Stroke hospital with a final clinical diagnosis of ischaemic stroke, discharged between April and December 2014, and linked to Centers for Medicare & Medicaid Services inpatient data were eligible for inclusion in this analysis. Patients were excluded from this analysis if they met any of the following criteria: (1) fee for service ineligible at discharge; (2) discharged to hospice or left against medical advice; (3) in-hospital death; (4) discharge AD not documented and (5) any contraindications to AD use (figure 1).

Variables of interest

AD and SSRI use were classified from medication reconciliation data review of preadmission and hospital discharge medications. Patients were assigned to the AD group if they were taking any ADs regardless of the indication. SSRI use was defined if any of following medications were noted: citalopram, escitalopram, fluoxetine, paroxetine and sertraline. All other AD therapy was defined as non-SSRI ADs. AD and SSRI naïve patients were defined as those with no AD or SSRI on preadmission medication list and new AD or SSRI on hospital discharge.

Patient demographics and socioeconomic measures, including age, sex, race and insurance status, were recorded (see online supplemental materials for details). Medical history was obtained from medical records including depression, prior ischaemic stroke or transient ischaemic attack (TIA), diabetes, coronary artery disease, atrial fibrillation, heart failure, hypertension, tobacco use and peripheral vascular disease. On presentation, details of stroke severity (National Institutes of Health (NIH) Stroke Scale, National Institutes of Health Stroke Scale (NIHSS), ambulatory status, emergency medical services transport, time of arrival, time from ischaemic stroke onset to arrival and prior AD use were recorded. The variables recorded on discharge included ambulatory status, discharge disposition and discharge medications. Most variables were missing in less than 3% of patients, except for the following: NIHSS (14.8%), ambulatory status at admission (25.5%) and ambulatory status at discharge (3.4%). See online supplemental table S1 for details of how missing data were handled for each variable.

Outcomes/endpoints

The primary outcome was the total number of days spent alive and outside of a hospital, skilled nursing facility or inpatient rehabilitation facility within 1 year since discharge (home time). Dates of hospital discharge and readmission were ascertained from the inpatient institutional claims. Secondary outcomes included all-cause mortality, major adverse cardiac events (MACE, a

composite endpoint of all-cause mortality, cardiovascular (CV) and stroke readmissions) and readmission for: all-cause, ischaemic stroke/TIA, CV, non-CV, and depression 1-year postdischarge (see online supplemental materials for details).

Statistical analysis

The respective distributions of baseline characteristics among AD/SSRI naïve patients receiving (1) any AD versus no AD, and (2) SSRI vs non-SSRI were compared. Categorical variables were represented as proportions and continuous variables as mean±SD. Differences between groups were evaluated using χ^2 tests for categorical variables and Kruskal-Wallis tests for continuous variables.

Because patients who receive AD may differ from those who do not on important baseline and clinical characteristics that may affect the likelihood of adverse events, an overlap weighting method was used to create comparable groups. First, a logistic regression model was used to assign a probability of treatment selection to each patient based on the distribution of a defined set of variables, including age, race, sex, insurance status, medical history (depression, ischaemic stroke, TIA, diabetes mellitus, coronary artery disease, atrial fibrillation, heart failure, hypertension, peripheral vascular disease, carotid

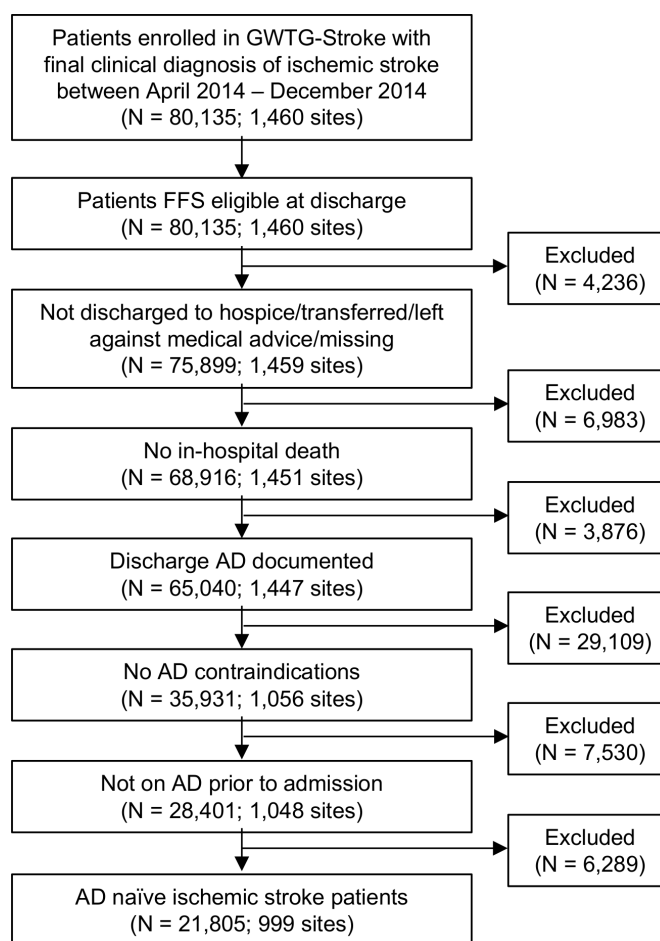


Figure 1 Inclusion/exclusion criteria. AD, antidepressant; FFS, fee for service; GWTG, get with the guidelines.

Table 1 Baseline characteristics by discharge AD use in AD naïve stroke patients (N=21 805)

Variable	Overall N=21 805	AD yes N=1835	AD no N=19970	P value
Demographics				
Age	79 (72–86)	78 (71–85)	79 (72–86)	<0.001
Gender				<0.001
Female	54.43	61.36	53.80	
Male	45.57	38.64	46.20	
Race/ethnicity				0.002
White	79.60	83.26	79.26	
Black	11.80	9.71	12.00	
Hispanic (any race)	3.84	3.22	3.90	
Asian	1.92	1.31	1.97	
Other (includes UTD)	2.84	2.51	2.87	
Insurance status				0.728
Self pay/no insurance	0.37	0.28	0.38	
Medicare	53.32	52.29	53.42	
Medicaid	6.72	6.95	6.70	
Private/VA/champus/other	39.59	40.49	39.50	
Medical history				
Depression	4.74	17.71	3.55	<0.001
Atrial fibrillation/flutter	23.64	23.00	23.70	0.497
Stroke	24.25	26.65	24.03	0.012
TIA	10.28	10.63	10.25	0.612
Coronary artery disease/prior MI	29.97	29.81	29.99	0.874
Carotid stenosis	4.51	4.85	4.48	0.467
Diabetes mellitus	33.07	34.99	32.90	0.069
Peripheral vascular disease	5.60	6.16	5.54	0.273
Hypertension	81.01	82.40	80.89	0.114
Smoker	10.13	11.34	10.02	0.074
Dyslipidaemia	51.06	51.72	51.00	0.559
Heart failure	10.11	10.35	10.09	0.715
Renal insufficiency	8.81	8.23	8.86	0.362
Medications prior to admission				
Antiplatelets	57.39	59.34	57.21	0.09
Anticoagulants	23.84	23.76	23.84	0.951
Antihypertensives	76.11	76.13	76.10	0.980
Cholesterol reducers	48.84	50.52	48.69	0.134
Diabetic medications	26.61	27.55	26.52	0.341
Presentation				
EMS arrival	51.24	53.55	51.03	0.042
On time arrival (non-holiday, M-F 7a-6p)	50.03	48.03	50.21	0.074
Onset to arrival times (min)	225 (79–606)	243.5 (98–600.5)	224 (77–606)	0.006
Onset to arrival times (min)				0.001
≥241	48.15	50.27	47.95	
≥120 and <241	17.03	19.60	16.79	
<120	34.82	30.13	35.26	
Initial NIHSS	3 (1–8)	5 (2–11)	3 (1–8)	<0.001
Initial NIHSS				<0.001

Continued

Table 1 Continued

Variable	Overall	AD yes	AD no	P value
	N=21 805	N=1835	N=19970	
≥15	11.79	15.83	11.41	
≥6 and <15	23.95	30.41	23.35	
<6	64.26	53.75	65.24	
Recorded initial NIHSS score	85.64	87.08	85.50	0.065
Ambulatory status at admission				<0.001
Able to ambulate independently	38.94	28.09	39.90	
With assistance from person	31.80	32.76	31.72	
Unable to ambulate	29.26	39.16	28.38	
Stroke symptoms resolved at time of presentation	9.32	7.32	9.51	0.01
Discharge				
Ambulatory status at discharge				<0.001
Able to ambulate independently	49.55	35.63	50.83	
With assistance from person	37.63	45.89	36.87	
Unable to ambulate	12.82	18.49	12.30	
Discharge destination				<0.001
Home	45.54	30.63	46.91	
Inpatient rehabilitation facility	28.08	34.01	27.54	
Skilled nursing facility	24.68	33.46	23.88	
Other healthcare facility	1.70	1.91	1.68	
Antihypertensives	88.61	91.63	88.34	<0.001
Antithrombotics	96.23	96.29	96.23	0.247
Antiplatelets	87.46	87.44	87.47	0.971
Aspirin	72.15	72.55	72.12	0.697
Anticoagulants	30.53	32.20	30.38	0.111

Bold denotes statistically significant p value < 0.05.

AD, antidepressant; EMS, emergency medical services; MI, myocardial infarction; NIHSS, National Institutes of Health Stroke Scale; TIA, transient ischaemic attack; UTD, unable to determine; VA, veterans affairs.

stenosis, dyslipidaemia and smoking), EMS transport, on-hour arrival and ambulatory status prior to ischaemic stroke admission. The binary outcome for the selection model was whether the patient received AD treatment (yes/no). Next, each subject was weighted by the overlap weights, calculated as the probability of being assigned to the opposite treatment group, resulting in a pseudo-randomisation of patients to each treatment. Following the weighting step, the primary and secondary endpoints were compared between AD and SSRI treatment groups. The unadjusted associations of AD or SSRI use with all-cause mortality, all-cause readmission, CV readmission, depression-related admission and stroke/TIA readmission were examined using a Cox proportional hazards model. Adjusted event rates were estimated using the same model with overlap weights. Differences in home time were examined using unadjusted negative binomial model with hospital-specific random intercepts, and then with overlap weights adjustment. Modelling was subsequently repeated for the following clinically relevant subgroups: age (<80 vs ≥80), sex (male vs female), race (white vs non-white), NIHSS (≤4 vs >4) and medical

history of depression. To evaluate the potential for residual confounding after multivariable adjustment, we investigated the association between AD use at discharge and a falsification endpoint, readmission for sepsis.

Kaplan-Meier curves were then constructed for all-cause mortality at 1 year following the index hospitalisation for patients prescribed an AD at hospital discharge. Log-rank tests were used to examine differences in mortality between AD treatment groups. For the readmission endpoints, the incidence at 1 year based on estimates from the cumulative incidence function was calculated and the Gray test was used to test for differences between groups for these outcomes.

RESULTS

After excluding patients without prior AD use documented or those on any AD prior to admission, 21 805 AD naïve patients from 999 hospitals were included in this analysis. Patients prescribed an AD at discharge (N=1835) were younger, more likely to be female and white, have higher rates of medical history of depression and prior



Table 2 AD use and clinical outcomes at 1-year post-IS discharge

Outcomes at 1 year	Cumulative incidence	Unadjusted		Weight adjusted		NIHSS weight adjusted	
		HR (95% CI)	P value	HR (95% CI)	P value	HR (95% CI)	P value
All-cause mortality							
AD yes	478 (26.05)	1.32 (1.21 to 1.45)	<0.001	1.29 (1.17 to 1.41)	<0.001	1.21 (1.09 to 1.34)	<0.001
AD no	4050 (20.28)	Reference		Reference		Reference	
All-cause readmission							
AD yes	940 (52.19)	1.22 (1.14 to 1.30)	<0.001	1.19 (1.11 to 1.27)	<0.001	1.16 (1.08 to 1.24)	<0.001
AD no	9008 (46.01)	Reference		Reference		Reference	
Composite of mortality and all-cause readmission							
AD yes	1079 (59.90)	1.23 (1.15 to 1.31)	<0.001	1.19 (1.12 to 1.27)	<0.001	1.16 (1.08 to 1.24)	<0.001
AD no	10274 (52.46)	Reference		Reference		Reference	
CV readmission							
AD yes	440 (24.46)	1.10 (1.00 to 1.22)	0.056	1.11 (1.00 to 1.22)	0.05	1.08 (0.96 to 1.20)	0.19
AD no	4496 (22.99)	Reference		Reference		Reference	
MACE							
AD yes	766 (42.61)	1.18 (1.10 to 1.27)	<0.001	1.17 (1.08 to 1.26)	<0.001	1.11 (1.03 to 1.20)	0.009
AD no	7313 (37.40)	Reference		Reference		Reference	
IS/TIA readmission							
AD yes	205 (11.38)	1.07 (0.92 to 1.24)	0.389	1.07 (0.91 to 1.25)	0.41	1.02 (0.86 to 1.21)	0.803
AD No	2135 (10.89)	Reference		Reference		Reference	
ICH readmission							
AD yes	19 (1.05)	1.19 (0.75 to 1.89)	0.466	1.07 (0.66 to 1.72)	0.794	0.99 (0.59 to 1.67)	0.975
AD no	178 (0.91)	Reference		Reference		Reference	
Non-CV readmission							
AD yes	694 (38.61)	1.27 (1.18 to 1.36)	<0.001	1.20 (1.12 to 1.30)	<0.001	1.18 (1.08 to 1.28)	<0.001
AD no	6370 (32.62)	Reference		Reference		Reference	
Readmission with depression							
AD yes	352 (19.93)	3.53 (3.13 to 3.98)	<0.001	2.37 (2.09 to 2.70)	<0.001	2.31 (2.02 to 2.65)	<0.001
AD no	1191 (6.27)	Reference		Reference		Reference	
Readmission with sepsis							
AD yes	218 (12.13)	1.46 (1.27 to 1.67)	<0.001	1.37 (1.19 to 1.58)	<0.001	1.36 (1.16 to 1.59)	<0.001
AD no	1703 (8.73)	Reference		Reference		Reference	
	Mean (SD)	Difference (95% CI)	P value	Difference (95% CI)	P value	Difference (95% CI)	P value

Continued

Table 2 Continued

Outcomes at 1 year	Cumulative incidence	Unadjusted		Weight adjusted		NIHSS weight adjusted		P value
		HR (95% CI)	P value	HR (95% CI)	P value	HR (95% CI)	P value	
Home-time, days								
AD yes	262.1 (125.8)	-24.2 (-29.6 to -18.8)	<0.001	-27.6 (-33.0 to -22.1)	<0.001	-25.3 (-31.1 to -19.4)	<0.001	
AD no	284.3 (120.8)	Reference		Reference		Reference		

Bold denotes statistically significant p value < 0.05.

AD, antidepressant; CV, cardiovascular; ICH, intracranial haemorrhage; IS, ischaemic stroke; MACE, major adverse cardiac events; NIHSS, National Institutes of Health Stroke Scale; TIA, transient ischaemic attack.

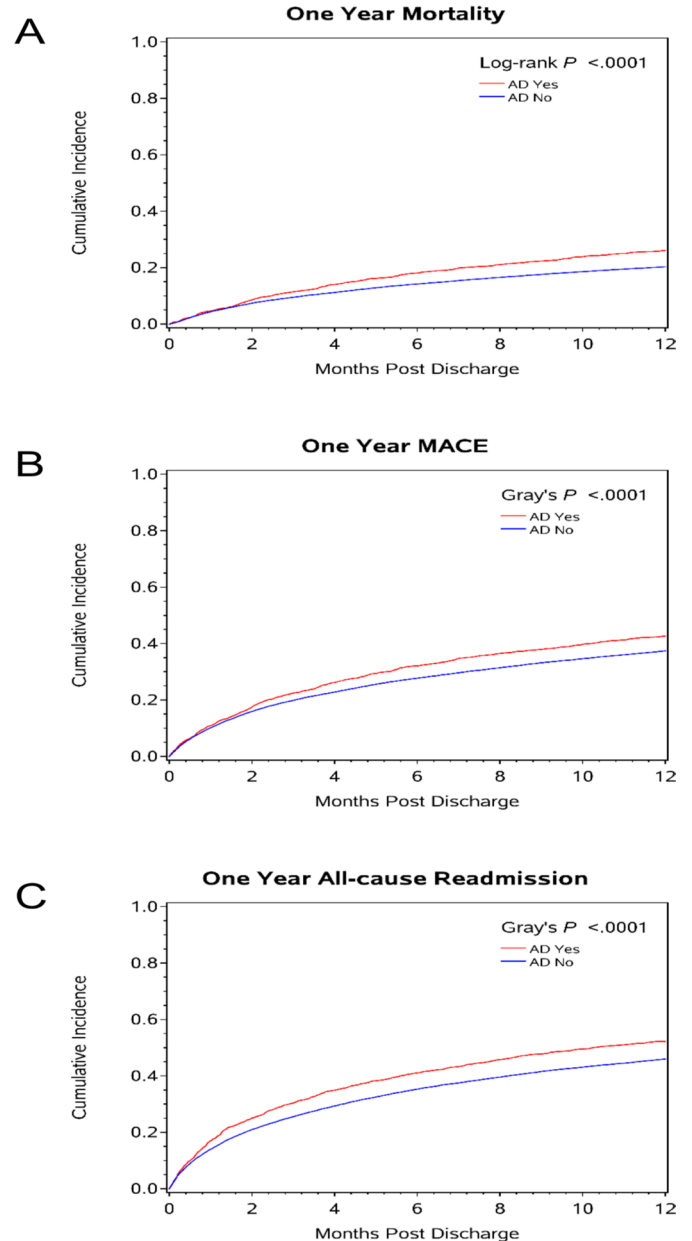


Figure 2 Cumulative incidence plots for 1-year follow-up outcomes in AD naive patients for (A) 1-year mortality; (B) 1-year MACE and (C) 1-year all-cause readmission. AD, antidepressant; MACE, major adverse cardiac events.

ischaemic stroke, and present at later time from onset with higher admission NIHSS and reduced ability to ambulate compared with the no AD group (N=19 970, table 1).

On discharge, the group started on an AD were less likely to be ambulatory or discharged home. Of those patients started on a SSRI (N=377), the SSRI group was also younger but had no difference in admission NIHSS or ambulatory status compared with the no SSRI group (online supplemental table S2). Patients started on a SSRI were more likely to ambulate independently at discharge and also had lower rates of discharge to home.

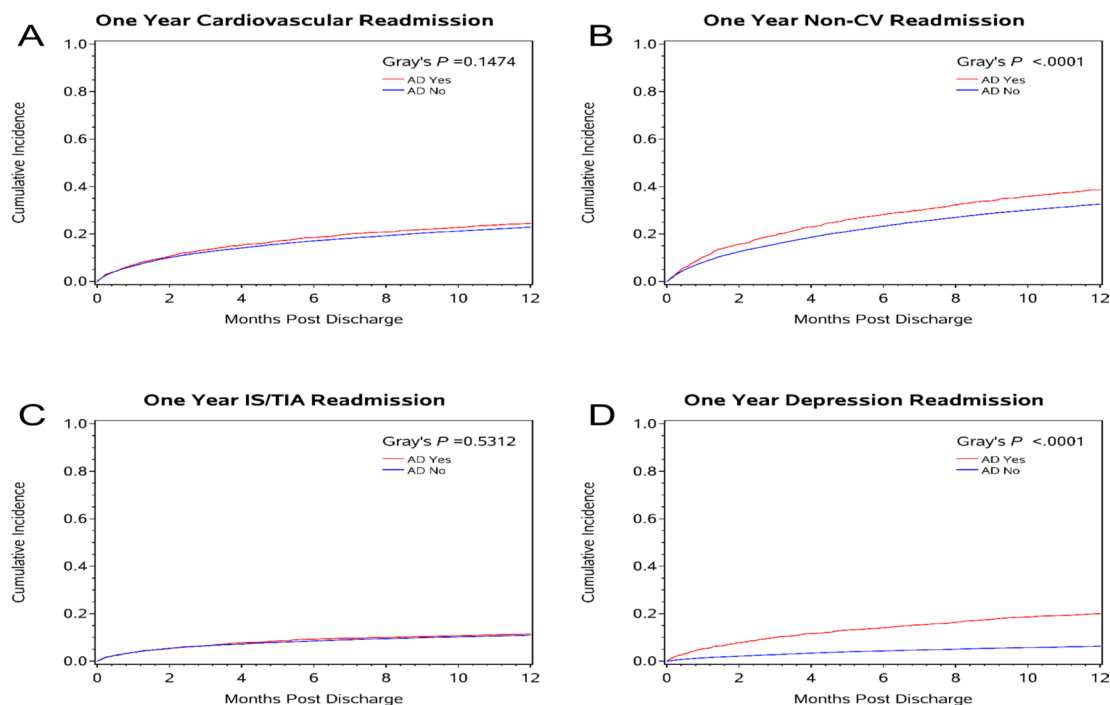


Figure 3 Cumulative incidence plots for 1-year follow-up readmission outcomes in AD naïve patients for (A) cardiovascular readmission; (B) non-cardiovascular readmission; (C) IS/TIA readmission and (D) depression readmission. AD, antidepressant; CV, cardiovascular; IS, ischaemic attack; TIA, transient ischaemic attack.

To create comparable AD treatment groups, we employed an overlap-weight-adjusted propensity model for the probability of being started on an AD. After overlap weighting, the propensity score distributions of being on an AD in the two treatment groups showed sufficient overlap, and all model adjustment variables were balanced as indicated by the small postweighting standardised differences (online supplemental figure S1 and S2).

After overlap weight adjustment, AD initiation among AD naïve patients was associated with shorter home time and worse clinical outcomes at 1 year, including: all-cause mortality, all-cause readmission, MACE and readmission for depression or non-CV reasons (table 2, figure 2, online supplemental figure S3). Notably, no difference was observed in stroke/TIA or CV readmissions between the AD and no AD groups (table 2, figure 3).

In contrast, in the SSRI subgroup, rates of readmission for stroke/TIA were reduced in the population started on an SSRI as compared with the no SSRI group, whereas no difference was observed in rates of all-cause mortality or other readmissions (online supplemental table S3). However, AD use was also associated with the falsification endpoint, readmission for sepsis, suggesting the presence of residual confounding after adjustment.

Lastly, we examined the heterogeneity of the AD treatment effect across prespecified subgroups including age, sex, race, mild stroke and patients with medical history of depression (table 3, online supplemental table S4).

Adjusting for stroke severity, patients with mild stroke started on an AD were at increased risk of all-cause mortality, readmission, MACE and non-CV readmission

compared with the no AD group. Among patients without a prestroke history of depression, starting an AD was also associated with worse clinical outcomes at 1 year (online supplemental table S4).

DISCUSSION

In this analysis from a national registry of inpatient ischaemic stroke patients, we observe that approximately 1 in 12 patients with ischaemic stroke were newly initiated on an AD and these patients are a clinically vulnerable population at higher risk for poor clinical outcomes and readmissions. Despite adjusting for stroke severity and other comorbidities, patients started on an AD during their index ischaemic stroke hospitalisation had decreased home time and increased all-cause mortality and non-stroke readmissions, but no difference in stroke or TIA readmission up to 1-year postdischarge. Additionally, the association between AD use and a falsification endpoint, readmission for sepsis, persisted even after adjustment, suggesting the presence of residual confounding.

Our findings suggest that patients with ischaemic stroke initiated on an AD during their index hospitalisation are at increased risk for poor clinical outcomes, in particular increased mortality and non-CV readmission but not CV or ischaemic stroke/TIA readmission. In part, this observation may be due to the increased admission NIHSS score and higher rates of premorbid depression in the AD group. The subsequent subgroup analysis, however, provides additional insight into these findings as we observed that patients with mild ischaemic stroke severity

Table 3 AD use and clinical outcomes at 1-year post-IS discharge by subgroups

Outcomes at one year	Unadjusted		Weight adjusted		NIHSS weight adjusted	
	HR (95% CI)	P value	HR (95% CI)	P value	HR (95% CI)	P value
All-cause mortality						
		0.3		0.615		0.661
Age ≥80 years	1.32 (1.18 to 1.48)	<0.001	1.28 (1.14 to 1.43)	<0.001	1.20 (1.06 to 1.36)	0.005
Age <80 years	1.46 (1.25 to 1.71)	<0.001	1.34 (1.14 to 1.58)	<0.001	1.26 (1.06 to 1.50)	0.01
		0.826		0.674		0.697
Female	1.32 (1.17 to 1.49)	<0.001	1.31 (1.15 to 1.48)	<0.001	1.23 (1.08 to 1.40)	0.002
Male	1.29 (1.11 to 1.50)	<0.001	1.25 (1.08 to 1.46)	0.004	1.18 (1.00 to 1.39)	0.057
		0.266		0.2934		0.348
White	1.29 (1.16 to 1.43)	<0.001	1.25 (1.13 to 1.39)	<0.001	1.18 (1.06 to 1.32)	0.003
Non-white	1.48 (1.19 to 1.85)	<0.001	1.44 (1.15 to 1.80)	0.002	1.34 (1.06 to 1.71)	0.016
		0.004		0.007		0.006
NIHSS >4	1.08 (0.95 to 1.22)	0.237	1.08 (0.95 to 1.22)	0.258	1.08 (0.95 to 1.23)	0.221
NIHSS ≤4	1.47 (1.24 to 1.73)	<0.001	1.44 (1.21 to 1.71)	<0.001	1.46 (1.23 to 1.73)	<0.001
		0.021		0.016		0.008
History of depression Yes	0.96 (0.73 to 1.27)	0.794	0.94 (0.72 to 1.24)	0.685	0.84 (0.63 to 1.13)	0.254
History of depression No	1.36 (1.23 to 1.49)	<0.001	1.35 (1.22 to 1.49)	<0.001	1.28 (1.15 to 1.43)	<0.001
All-cause readmission						
		0.482		0.685		0.763
Age ≥80 years	1.20 (1.09 to 1.32)	<0.001	1.17 (1.06 to 1.29)	0.002	1.14 (1.03 to 1.27)	0.011
Age <80 years	1.27 (1.14 to 1.40)	<0.001	1.21 (1.09 to 1.34)	<0.001	1.17 (1.05 to 1.31)	0.005
		0.682		0.613		0.864
Female	1.20 (1.10 to 1.31)	<0.001	1.17 (1.07 to 1.28)	<0.001	1.15 (1.05 to 1.26)	0.004
Male	1.24 (1.12 to 1.37)	<0.001	1.21 (1.09 to 1.35)	<0.001	1.16 (1.04 to 1.30)	0.007
		0.439		0.526		0.396
White	1.21 (1.13 to 1.30)	<0.001	1.17 (1.09 to 1.26)	<0.001	1.14 (1.06 to 1.23)	<0.001
Non-white	1.30 (1.11 to 1.52)	0.001	1.24 (1.06 to 1.46)	0.009	1.24 (1.04 to 1.47)	0.016
		0.104		0.234		0.226
NIHSS >4	1.11 (1.01 to 1.22)	0.033	1.10 (1.00 to 1.21)	0.058	1.10 (1.00 to 1.21)	0.045
NIHSS ≤4	1.25 (1.12 to 1.39)	<0.001	1.20 (1.08 to 1.34)	0.001	1.21 (1.08 to 1.35)	<0.001
		0.011		0.008		0.016
History of depression yes	0.96 (0.80 to 1.16)	0.692	0.94 (0.79 to 1.13)	0.542	0.92 (0.76 to 1.12)	0.412
History of depression no	1.24 (1.15 to 1.33)	<0.001	1.23 (1.14 to 1.32)	<0.001	1.20 (1.11 to 1.29)	<0.001
MACE						
		0.522		0.722		0.829
Age ≥80 years	1.17 (1.06 to 1.29)	0.002	1.16 (1.05 to 1.28)	0.004	1.10 (0.99 to 1.23)	0.074
Age <80 years	1.23 (1.09 to 1.39)	<0.001	1.19 (1.05 to 1.34)	0.005	1.12 (0.99 to 1.28)	0.076
		0.969		0.945		0.887
Female	1.17 (1.06 to 1.30)	0.001	1.17 (1.06 to 1.29)	0.003	1.12 (1.00 to 1.24)	0.043
Male	1.18 (1.05 to 1.32)	0.005	1.16 (1.03 to 1.31)	0.011	1.10 (0.97 to 1.25)	0.139
		0.557		0.568		0.684
White	1.17 (1.08 to 1.27)	<0.001	1.15 (1.06 to 1.25)	<0.001	1.10 (1.01 to 1.20)	0.026
Non-white	1.24 (1.04 to 1.48)	0.018	1.22 (1.02 to 1.47)	0.031	1.15 (0.95 to 1.39)	0.146
		0.008		0.022		0.021
NIHSS >4	1.00 (0.90 to 1.11)	0.955	1.01 (0.91 to 1.12)	0.871	1.01 (0.91 to 1.13)	0.805

Continued



Table 3 Continued

Outcomes at one year	Unadjusted		Weight adjusted		NIHSS weight adjusted	
	HR (95% CI)	P value	HR (95% CI)	P value	HR (95% CI)	P value
NIHSS ≤4	1.25 (1.11 to 1.41)	<0.001	1.23 (1.08 to 1.39)	0.001	1.24 (1.09 to 1.40)	<0.001
		<i>0.038</i>		<i>0.027</i>		<i>0.037</i>
History of depression yes	0.96 (0.78 to 1.18)	0.689	0.94 (0.76 to 1.16)	0.552	0.89 (0.71 to 1.11)	0.302
History of depression no	1.21 (1.12 to 1.31)	<0.001	1.21 (1.12 to 1.31)	<0.001	1.15 (1.06 to 1.25)	0.001

Italics denotes p value for the interaction of AD use and outcomes between subgroups.

Bold denotes statistically significant p value < 0.05.

AD, antidepressant; CV, cardiovascular; IS, ischaemic stroke; MACE, major adverse cardiac events; NIHSS, National Institutes of Health Stroke Scale.

and those without a prestroke diagnosis of depression started on an AD were also at increased risk of all-cause mortality and readmission. These observations in patients with minor stroke or no history of depression, suggest the possibility of unmeasured confounders that potentially influence the clinical decision making for initiation of an AD. We pursued propensity model analysis to account for preselected clinically relevant factors for AD treatment, including NIHSS. Unfortunately, the model still suggested that both the non-treated and AD treated groups had low overall chances of being prescribed an AD. The positive association with a falsification endpoint also suggests the presence of unmeasured confounders for AD initiation in this patient cohort. Overall these findings underscore the importance of recognising that patients started on an AD during their ischaemic stroke hospitalisation are high risk for early mortality and non-CV readmission and, as a result, increased attention should be paid to transitions of care and preventative medicine in this patient population.

The underlying explanation for why patients initiated on an AD during their index ischaemic stroke hospitalisation would have worse clinical outcomes and readmissions is less clear, and should be the subject of future research. The large, randomised controlled trials, FOCUS, EFFECTS and AFFINITY, demonstrated that fluoxetine after ischaemic or haemorrhagic stroke did not significantly improve functional outcomes but was associated with excess bone fracture risk (1%), which could possibly contribute to the increased risk of non-CV readmissions.^{18 19} A propensity score match analysis of a Danish Stroke Registry observed reduced 30-day mortality in patients started on an AD during the acute hospitalisation, however, this was a shorter time period of follow-up without additional data on readmission rates.²³ The observation that patients without a diagnosis of depression or with mild stroke that were started on an AD had worse clinical outcomes suggests unmeasured factors that may predispose to poor outcomes. Further emphasising that patients with ischaemic stroke started on an AD during their hospitalisation are high risk, we observed this group to have higher rates of readmission for sepsis. One possible explanation for the observed worse clinical outcomes in this cohort may be clinical suspicion for poststroke depression as the indication for AD initiation.

Poststroke depression occurs in up to one in three of patients with stroke and is associated with poor functional outcomes and increased mortality.^{2 3 24–26} Compounding this issue, poststroke depression has also been shown to influence participation in rehabilitation activities^{27 28} and increase inpatient utilisation times.²⁹ Along these lines, patients started on an AD in our analysis had higher likelihood of a readmission for depression.

There are several strengths of our study. First, this was a large-scale analysis of national AD/SSRI initiation restricted to patients with ischaemic stroke with detailed clinical outcomes and readmission endpoints. Second, as compared with clinical trial databases, analysis of the GWTG-Stroke Registry provides insight into the real-world practice patterns for AD/SSRI treatment of patients with ischaemic stroke. Third, unlike other studies which were restricted to individual AD/SSRI agents or antidepressant classes in combined haemorrhagic and ischaemic populations, our analysis explored all ADs and SSRIs exclusively in patients with ischaemic stroke who have a more homogeneous distribution of outcomes as opposed to a cohort of both ischaemic and haemorrhagic stroke subtypes.

There are several important considerations regarding the results of this study. First, this was a retrospective analysis of a national registry during a finite time period, which may limit the overall generalisability. However, the large patient population and diverse clinical settings mitigates these concerns somewhat as they highlight the broad patient population included in this analysis. Second, information on the indication, dose, duration or adherence to AD/SSRI treatment is lacking, which holds potential to provide further insight into the underlying nature of our observations. Future studies further exploring the indication for AD initiation and the relationship of AD dose and duration in relation to post-stroke outcomes are necessary. Lastly, direct information on rates of poststroke depression is not available in this analysis. As a surrogate, however, the information on readmission for depression indirectly addresses this limitation.

CONCLUSIONS

Among patients hospitalised with acute ischaemic stroke, 8.4% were newly started on an AD during their stroke hospitalisation and these patients were at risk for higher

mortality and readmission for non-stroke related causes. These findings suggest that the decision to start an ischaemic stroke patient on an AD identifies patients at risk for poor clinical outcomes, even after controlling for differences in stroke severity.

Author affiliations

- ¹Neurology, Massachusetts General Hospital, Boston, Massachusetts, USA
²Neurology, Duke University School of Medicine, Durham, North Carolina, USA
³Duke Clinical Research Institute, Duke University, Durham, North Carolina, USA
⁴American Heart Association Inc, Dallas, Texas, USA
⁵Clinical Neurosciences, University of Calgary Cumming School of Medicine, Calgary, Alberta, Canada
⁶Cardiology, Ronald Reagan UCLA Medical Center, Los Angeles, California, USA
⁷Cardiovascular Medicine, Brigham and Women's Hospital, Boston, Massachusetts, USA
⁸Cardiology, Duke University, Durham, North Carolina, USA
⁹Population Health, Duke Clinical Research Institute, Durham, North Carolina, USA

Twitter Shreyansh Shah @Shree_Stroke

Contributors ME analysed and interpreted the data and drafted the manuscript. SS, LM, DH, BLi, Bly, LT, EES, GCF, LHS, DLB and AH provided critical revisions to the manuscript for intellectual content. XH, YX and ECO analysed the data and provided critical revisions to the manuscript for intellectual content. All authors reviewed and gave final approval to the submitted manuscript.

Funding ME, SS, XH, YX, LM, DH, BLi, Bly, LT and EES report no relevant funding. GCF and LHS report funding from PCORI and being a member of the GWTC-Stroke Systems of Care Advisory Group. The GWTC-Stroke program is provided by the American Heart Association/American Stroke Association. GWTC-Stroke is sponsored, in part, by Novartis, Boehringer Ingelheim Lilly, Novo Nordisk, Sanofi, AstraZeneca and Bayer. PROSPER study was supported by an award (CE-1304-7073) from the Patient-Centered Outcomes Research Institute (PCORI).

Competing interests DLB discloses the following relationships—Advisory Board: Cardax, CellProthera, Cereno Scientific, Elsevier Practice Update Cardiology, Level Ex, Medscape Cardiology, PhaseBio, PLx Pharma, Regado Biosciences; Board of Directors: Boston VA Research Institute, Society of Cardiovascular Patient Care, TobeSoft; Chair: American Heart Association Quality Oversight Committee; Data Monitoring Committees: Baim Institute for Clinical Research (formerly Harvard Clinical Research Institute, for the PORTICO trial, funded by St. Jude Medical, now Abbott), Cleveland Clinic (including for the ExCEED trial, funded by Edwards), Contego Medical (Chair, PERFORMANCE 2), Duke Clinical Research Institute, Mayo Clinic, Mount Sinai School of Medicine (for the ENVISAGE trial, funded by Daiichi Sankyo), Population Health Research Institute; Honoraria: American College of Cardiology (Senior Associate Editor, Clinical Trials and News, ACC.org; Vice-Chair, ACC Accreditation Committee), Baim Institute for Clinical Research (formerly Harvard Clinical Research Institute; RE-DUAL PCI clinical trial steering committee funded by Boehringer Ingelheim; AEGIS-II executive committee funded by CSL Behring), Belvoir Publications (Editor in Chief, Harvard Heart Letter), Duke Clinical Research Institute (clinical trial steering committees, including for the PRONOUNCE trial, funded by Ferring Pharmaceuticals), HMP Global (Editor in Chief, Journal of Invasive Cardiology), Journal of the American College of Cardiology (Guest Editor; Associate Editor), K2P (Co-Chair, interdisciplinary curriculum), Level Ex, Medelligence/ReachMD (CME steering committees), MJH Life Sciences, Population Health Research Institute (for the COMPASS operations committee, publications committee, steering committee, and USA national co-leader, funded by Bayer), Slack Publications (Chief Medical Editor, Cardiology Today's Intervention), Society of Cardiovascular Patient Care (Secretary/Treasurer), WebMD (CME steering committees); Other: Clinical Cardiology (Deputy Editor), NCDR-ACTION Registry Steering Committee (Chair), VA CART Research and Publications Committee (Chair); Research Funding: Abbott, Afimmune, Amarin, Amgen, AstraZeneca, Bayer, Boehringer Ingelheim, Bristol-Myers Squibb, Cardax, Chiesi, CSL Behring, Eisai, Ethicon, Ferring Pharmaceuticals, Forest Laboratories, Fractyl, Idorsia, Ironwood, Ischemix, Lexicon, Lilly, Medtronic, Pfizer, PhaseBio, PLx Pharma, Regeneron, Roche, Sanofi Aventis, Synaptic, The Medicines Company; Royalties: Elsevier (Editor, Cardiovascular Intervention: A Companion to Braunwald's Heart Disease); Site Coinvestigator: Biotronik, Boston Scientific, CSI, St. Jude Medical (now Abbott), Svelte; Trustee: American College of Cardiology; Unfunded Research: FlowCo, Merck, Novo Nordisk, Takeda.

Patient consent for publication Not required.

Provenance and peer review Not commissioned; externally peer reviewed.

Data availability statement Data may be obtained from a third party and are not publicly available. All data and materials used for this analysis are available from the GWTC-Stroke Registry.

Open access This is an open access article distributed in accordance with the Creative Commons Attribution Non Commercial (CC BY-NC 4.0) license, which permits others to distribute, remix, adapt, build upon this work non-commercially, and license their derivative works on different terms, provided the original work is properly cited, appropriate credit is given, any changes made indicated, and the use is non-commercial. See: <http://creativecommons.org/licenses/by-nc/4.0/>.

ORCID iDs

Mark R Etherton <http://orcid.org/0000-0002-4739-2449>

Shreyansh Shah <http://orcid.org/0000-0001-8441-6326>

Xu Haolin <http://orcid.org/0000-0003-1069-9567>

REFERENCES

- Towfighi A, Ovbiagele B, El Hussein N, *et al.* Poststroke depression: a scientific statement for healthcare professionals from the American heart Association/American stroke association. *Stroke* 2017;48:e30–43.
- Bartoli F, Lillia N, Lax A, *et al.* Depression after stroke and risk of mortality: a systematic review and meta-analysis. *Stroke Res Treat* 2013;2013:1–11.
- Kutlubaev MA, Hackett ML. Part II: predictors of depression after stroke and impact of depression on stroke outcome: an updated systematic review of observational studies. *Int J Stroke* 2014;9:1026–36.
- El Hussein N, Goldstein LB, Peterson ED, *et al.* Depression and antidepressant use after stroke and transient ischemic attack. *Stroke* 2012;43:1609–16.
- Starkstein SE, Mizrahi R, Power BD. Antidepressant therapy in post-stroke depression. *Expert Opin Pharmacother* 2008;9:1291–8.
- Hackett ML, Anderson CS, House AO. Management of depression after stroke: a systematic review of pharmacological therapies. *Stroke* 2005;36:1098–103.
- McCann SK, Irvine C, Mead GE, *et al.* Efficacy of antidepressants in animal models of ischemic stroke: a systematic review and meta-analysis. *Stroke* 2014;45:3055–63.
- Schmidt HD, Duman RS. The role of neurotrophic factors in adult hippocampal neurogenesis, antidepressant treatments and animal models of depressive-like behavior. *Behav Pharmacol* 2007;18:391–418.
- Lim C-M, Kim S-W, Park J-Y, *et al.* Fluoxetine affords robust neuroprotection in the postischemic brain via its anti-inflammatory effect. *J Neurosci Res* 2009;87:1037–45.
- Shin TK, Kang MS, Lee HY, *et al.* Fluoxetine and sertraline attenuate postischemic brain injury in mice. *Korean J Physiol Pharmacol* 2009;13:257–63.
- Schäbitz WR, Schwab S, Spranger M, *et al.* Intraventricular brain-derived neurotrophic factor reduces infarct size after focal cerebral ischemia in rats. *J Cereb Blood Flow Metab* 1997;17:500–6.
- Chollet F, Tardy J, Albuher J-F, *et al.* Fluoxetine for motor recovery after acute ischaemic stroke (flame): a randomised placebo-controlled trial. *Lancet Neurol* 2011;10:123–30.
- Siepmann T, Kepplinger J, Zerna C, *et al.* The effects of pretreatment versus de novo treatment with selective serotonin reuptake inhibitors on short-term outcome after acute ischemic stroke. *J Stroke Cerebrovasc Dis* 2015;24:1886–92.
- Zittel S, Weiller C, Liepert J. Citalopram improves dexterity in chronic stroke patients. *Neurorehabil Neural Repair* 2008;22:311–4.
- Acler M, Robol E, Fiaschi A, *et al.* A double blind placebo RCT to investigate the effects of serotonergic modulation on brain excitability and motor recovery in stroke patients. *J Neurol* 2009;256:1152–8.
- Siepmann T, Penzlin Al, Kepplinger J, *et al.* Selective serotonin reuptake inhibitors to improve outcome in acute ischemic stroke: possible mechanisms and clinical evidence. *Brain Behav* 2015;5:e00373.
- Legg LA, Tilney R, Hsieh C-F, *et al.* Selective serotonin reuptake inhibitors (SSRIs) for stroke recovery. *Cochrane Database Syst Rev* 2019;2019. doi:10.1002/14651858.CD009286.pub3. [Epub ahead of print: 26 Nov 2019].
- FOCUS Trial Collaboration. Effects of fluoxetine on functional outcomes after acute stroke (focus): a pragmatic, double-blind, randomised, controlled trial. *Lancet* 2019;393:265–74.



- 19 Graham C, Lewis S, Forbes J, *et al.* The FOCUS, AFFINITY and EFFECTS trials studying the effect(s) of fluoxetine in patients with a recent stroke: statistical and health economic analysis plan for the trials and for the individual patient data meta-analysis. *Trials* 2017;18:627.
- 20 Etherton MR, Siddiqui KA, Schwamm LH. Prestroke selective serotonin reuptake inhibitor use and functional outcomes after ischaemic stroke. *Stroke Vasc Neurol* 2018;3:9–16.
- 21 Fonarow GC, Reeves MJ, Smith EE, *et al.* Characteristics, performance measures, and in-hospital outcomes of the first one million stroke and transient ischemic attack admissions in get with the Guidelines-Stroke. *Circ Cardiovasc Qual Outcomes* 2010;3:291–302.
- 22 Schwamm LH, Fonarow GC, Reeves MJ, *et al.* Get with the Guidelines-Stroke is associated with sustained improvement in care for patients hospitalized with acute stroke or transient ischemic attack. *Circulation* 2009;119:107–15.
- 23 Mortensen JK, Johnsen SP, Larsson H, *et al.* And all-cause 30-day mortality in patients with ischemic stroke. *Cerebrovasc Dis* 2015;40:81–90.
- 24 Whyte EM, Mulsant BH, Rovner BW, *et al.* Preventing depression after stroke. *Int Rev Psychiatry* 2006;18:471–81.
- 25 Whyte EM, Mulsant BH. Post stroke depression: epidemiology, pathophysiology, and biological treatment. *Biol Psychiatry* 2002;52:253–64.
- 26 El Husseini N, Goldstein LB, Peterson ED, *et al.* Depression status is associated with functional decline over 1-year following acute stroke. *J Stroke Cerebrovasc Dis* 2017;26:1393–9.
- 27 Skidmore ER, Whyte EM, Holm MB, *et al.* Cognitive and affective predictors of rehabilitation participation after stroke. *Arch Phys Med Rehabil* 2010;91:203–7.
- 28 Gillen R, Tennen H, McKee TE, *et al.* Depressive symptoms and history of depression predict rehabilitation efficiency in stroke patients. *Arch Phys Med Rehabil* 2001;82:1645–9.
- 29 Ghose SS, Williams LS, Swindle RW. Depression and other mental health diagnoses after stroke increase inpatient and outpatient medical utilization three years poststroke. *Med Care* 2005;43:1259–64.