

BMJ Open Decongestive progressive resistance exercise with an adjustable compression wrap for breast cancer-related lymphoedema (DREAM): protocol for a randomised controlled trial

Mona M Al Onazi,¹ Kristin L Campbell ,² Richard B Thompson,³ Sunita Ghosh,^{4,5} John R Mackey,⁵ Anne Muir,⁶ Margaret L McNeely ^{1,5}

To cite: Al Onazi MM, Campbell KL, Thompson RB, *et al*. Decongestive progressive resistance exercise with an adjustable compression wrap for breast cancer-related lymphoedema (DREAM): protocol for a randomised controlled trial. *BMJ Open* 2022;**12**:e053165. doi:10.1136/bmjopen-2021-053165

► Prepublication history and additional supplemental material for this paper are available online. To view these files, please visit the journal online (<http://dx.doi.org/10.1136/bmjopen-2021-053165>).

Received 08 May 2021
Accepted 30 January 2022



© Author(s) (or their employer(s)) 2022. Re-use permitted under CC BY-NC. No commercial re-use. See rights and permissions. Published by BMJ.

For numbered affiliations see end of article.

Correspondence to

Dr Margaret L McNeely;
mmcneely@ualberta.ca

ABSTRACT

Introduction Breast cancer-related lymphoedema (BCRL) is a chronic swelling in the arm on the side of the breast cancer surgery, affecting one in five women. Recent studies in BCRL have demonstrated that resistance exercise can improve symptoms and quality of life without worsening lymphoedema. No studies have explored whether combining the principles of progressive resistance exercise training with therapeutic strategies of compression therapy and the decongestive lymphatic exercise sequence are beneficial in reducing arm lymphoedema volume. The aim of this three-arm, provincial randomised controlled trial is to determine the efficacy of a 12-week decongestive progressive resistance exercise (DRE) programme in combination with the one of two types of compression garments compared with standard care.

Methods and analysis Sixty women with BCRL will be recruited and randomly assigned to one of the following three groups: (1) Standard care, (2) DRE with use of a daytime compression garment during exercise and (3) DRE with use of an adjustable compression wrap during exercise. The primary outcome is the percentage reduction in arm lymphoedema volume. Secondary outcomes include bioimpedance analysis, muscular strength, shoulder range of motion, physical activity level and health-related quality of life. Exploratory outcomes include evaluating changes in arm tissue composition using MRI and examining outcomes between the two DRE experimental groups. The primary analysis will compare changes between the groups from baseline to week 12 reflecting the end of the randomised control trial period.

Ethics and dissemination The trial has received ethics approval from the Health Research Ethics Board of Alberta: Cancer Committee. The study results will be disseminated through scientific peer-reviewed publications, and presented at national and international conferences, and other media portals. The programme protocol will be shared with healthcare professionals and patient groups through clinical workshops and webinars.

Trial registration number NCT05022823.

Protocol version 12 November 2021.

Issue date 26 April 2021.

Strengths and limitations of this study

- Evaluation of the benefit of a combined programme involving a specialised decongestive resistance exercise programme and use of compression on arm lymphoedema volume.
- Prospective collection of data on compression garment type and wear-time during exercise and throughout the day.
- Exploratory analyses on the benefit of the programme on arm tissue composition through MRI.
- Use of a fast-track design was chosen to enhance the recruitment and retention; however, this design limits comparison of the originally assigned groups at 24-week follow-up.
- Data collection may be impacted by restrictions related to COVID-19.

INTRODUCTION

Background and rationale

Breast cancer-related lymphoedema (BCRL), swelling in the arm, breast and chest wall on the side of the breast cancer, results from damage to the lymphatic system due to cancer or cancer treatment.¹ It occurs in an estimated 21% of cases of breast cancer.² To date, it is an incurable, progressive, distressing, and debilitating condition requiring life-long management.³ Impairments associated with lymphoedema include pain, fatigue and heaviness and tightness in the extremity; and lymphoedema may negatively impact shoulder range of motion (ROM), strength and function of the upper extremity.^{1,3} Not surprisingly, survivors with BCRL have been found to have a poorer health-related quality of life (QOL) compared with those without the condition.⁴

There is currently no cure for lymphoedema; therefore, management of the

condition involves conservative interventions aiming to reduce the swelling, prevent cellulitis and optimise the survivor's function and QOL. The initial phase of treatment is a course of 2–4 weeks of intensive decongestive therapy, comprising skin care, bandaging using multi-layered bandages, decongestive exercises and self-care, with or without manual lymphatic drainage. The aim of this phase is to reduce the swelling.⁵ The second phase of treatment, called the maintenance phase, involves daily use of a compression garment^{6 7} and a home programme involving a specialised decongestive exercise programme.^{5–7}

Using a compression garment is essential to maintain the volume reduction during the maintenance phase.⁵ There are two main types of compression garments; standard daytime compression garments and adjustable compression wraps. The standard daytime compression garments are available as ready-to-wear (off-shelf) or can be custom-made. Survivors with BCRL are told to wear their daytime compression garments during waking hours each day for 10–12 hours. Adjustable compression wraps, available on the market, are made of soft, non-elastic material, with an additional Velcro wrapping system allowing adjustment of compression for exercise and activity.

The principle of the decongestive exercise programme is to enhance lymph drainage from the oedematous area through the use of the skeletal-muscle contraction to promote venous and lymphatic return, and the programme involves active exercises without external resistance.^{7 8} Recent evidence supports the safety of other types of general exercise such as aerobic and resistance exercise for BCRL. Progressive resistance exercise programmes twice a week at a mild to moderate intensity, using free weights and weight machines,⁸ have been found to improve symptoms and reduce the frequency of relapses (ie, flares) in lymphoedema.^{9–11} High adherence to use of a compression garment and decongestive exercises during the maintenance phase is positively associated with long-term lymphoedema control.^{12 13}

To date, no studies have been performed combining all potential therapeutic approaches to address lymphoedema: (1) use of the decongestive exercise sequence to enhance venous and lymphatic return, (2) progressive resistance exercise training to improve symptoms and prevent relapses in arm volume and (3) use of a compression garment during both exercise and daytime hours to improve long-term control of the lymphoedema.^{11 14–17} **Figure 1** and online supplemental table S1 illustrate the theoretical concept and provide the rationale for a combined programme titled decongestive resistance exercise (DRE), respectively.

We recently completed the vanguard phase of the randomised control trial (RCT) that aimed to examine the feasibility of the DRE programme. Twenty participants were enrolled, and 19 completed the study (95%). Feasibility data also demonstrate high exercise attendance (94%) and excellent adherence to the prescribed protocol of DRE programme (97%). All participants

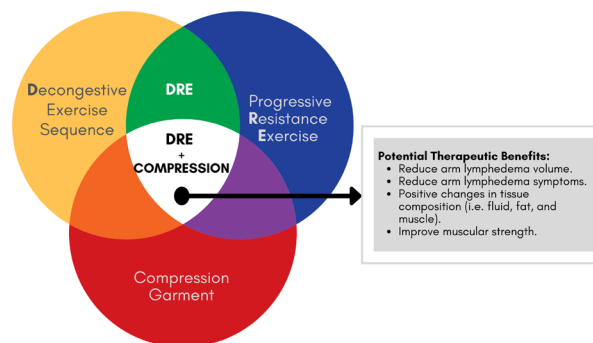


Figure 1 Schematic of the theoretical concept—combined decongestive progressive resistance exercise (DRE) and compression therapy.

reported 100% adherence to wearing their assigned compression garment during exercise (either using a daytime sleeve or adjustable compression wrap), and a daily average of 12 hours of wear-time. There were no minor or severe adverse events during the programme. The proposed RCT will follow the same study methods and intervention as per the vanguard phase, with inclusion of patient data from this phase (online supplemental appendix 1).

We hypothesise that combining DRE with either a compression garment or adjustable compression wrap will result in a larger lymphedema relative volume (LRV) reduction when compared with standard care. We will explore the mean difference between the two experimental groups performing DRE to see if there is a difference between use of a daytime sleeve or adjustable compression wrap; however, we hypothesise that the difference between groups will fall inside the equivalence interval of $\pm 10\%$ in LRV change. We will also explore the benefits of using Magnetic Resonance Imaging (MRI) in informing the effect of the intervention on arm tissue composition.

Objectives

The primary objectives are the following:

1. To examine the efficacy of DRE with use of adjustable compression wrap compared with standard care on the percentage change in arm lymphoedema volume.
2. To examine the efficacy of DRE with use of a daytime compression sleeve compared with standard care on the percentage change in arm lymphoedema volume.

Secondary objectives include examining the effect on arm tissue composition, bioimpedance analysis, shoulder ROM, upper and lower extremity muscle strength, physical activity, body image, QOL and adherence.

METHODS AND ANALYSIS

Study design

The DREAM study is a randomised controlled fast-track trial. Participants will be recruited from the Cross Cancer Institute (CCI) in Edmonton, and the Holy Cross Centre-Tom Baker Cancer Centre in Calgary, Canada. The study

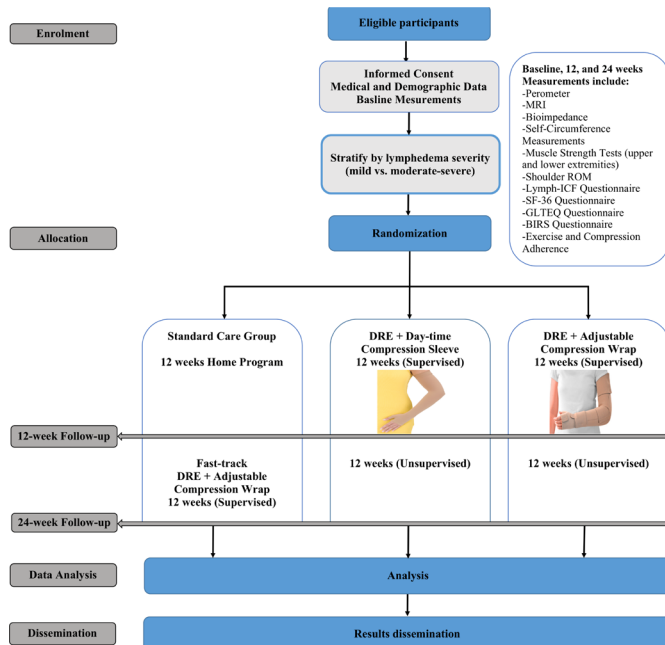


Figure 2 Study schema. BIRS, Body Image and Relationships Scale; DRE, decongestive resistance exercise; GLTEQ, Godin Leisure-Time Exercise Questionnaire; Lymph-ICF, Lymphoedema Functioning, Disability and Health; ROM, range of motion; SF-36, Short Form-36 Version 2.

will compare the results of three groups: A) Standard care (control), B) DRE + daytime compression garment, and C) DRE + adjustable compression wrap. The study will be conducted over 24 weeks comprising a 12-week supervised intervention and a 12-week follow-up period. Outcome measures will be assessed at baseline, 12 and 24 weeks. See [figure 2](#). The primary time point for the trial is 12 weeks. From week 13 to 24, the standard care group participants will be fast-tracked to Group C (DRE + adjustable compression wrap experimental intervention). The randomised fast-track trial design (with a delayed assignment of the standard care group to the experimental intervention) was chosen given the strong preference identified by our patient representative for assignment to the DRE + adjustable compression group. Moreover, this design, used in the vanguard phase, will serve to optimise recruitment as well as retention of participants in the standard care group.

Setting and participants

Between April 2022 and December 2023, potential participants will be identified through outpatient physical therapy clinics at the CCI and Holy Cross Centre, as well as local and provincial lymphoedema patient support groups and organisations. Patients will be provided with an information pamphlet, and if interested in taking part they will be required to initiate contact with the investigators.

Eligibility criteria

A survivor will be included based on the following criteria:

- ▶ Is a female with a history of breast cancer.

- ▶ Has undergone surgery, including sentinel lymph node biopsy or axillary lymph node dissection.
 - ▶ Has unilateral BCRL of at least 200 mL or 10% inter-limb volume difference (as per the criteria of the International Society of Lymphology),¹⁸ or regional lymphoedema, defined as a minimal volume difference of 100 mL or 5% in a segment of the arm (eg, hand and forearm region, elbow and upper arm).^{18–20}
 - ▶ Has chronic lymphoedema, defined as lymphoedema that has been present for at least 3 months.²¹
 - ▶ Has completed intensive reduction treatment, and is in the lymphoedema maintenance phase of conservative treatment.
 - ▶ Uses a well-fitted daytime compression garment (not older than 1 month and providing a minimum of 30 mmHg of pressure) and is agreeable to wear the garment for a minimum of 12 hours per day.
 - ▶ Is agreeable to discontinuing other lymphoedema treatments beyond standard care, including manual lymphatic drainage and intermittent pneumatic compression during the 12-week RCT period of the study.
 - ▶ Is able to read and understand English.
- A survivor will be excluded if she:
- ▶ Is undergoing or scheduled to receive chemotherapy, radiotherapy or biological therapy.
 - ▶ Presents with limb infection/ cellulitis, deep vein thrombosis or has active metastatic disease.
 - ▶ Has any neurological or cognitive deficit, is pregnant, uses a pacemaker, or has any other uncontrolled health condition that may interfere with assessment and/or the exercise training intervention.
 - ▶ Has any contraindications related to use of compression on the limb, such as arterial insufficiency or congestive heart failure.

Randomisation procedure

Participants will be stratified by lymphoedema severity (mild: <20% vs moderate to severe: ≥20% inter-limb difference in limb), and then randomised using a computer-generated randomisation module within the Trial's Research Electronic Data Capture (REDCap) database. Randomisation will occur following baseline testing, and participants will be assigned on a 1:1:1 basis to one of the three groups.

Blinding

A single independent assessor, who will be blinded to the group assignment, will carry out all objective measurements. Independent assessor training will be conducted and intra-rater reliability will be established for the primary outcome measure prior to trial continuation.

Intervention

As per standard of care, participants in all groups will be required to wear their daytime compression garments (during non-exercise times) for at least 12 hours per day, 7 days a week.

Group A: standard care group

Participants in this group will receive standard care for lymphoedema maintenance that includes a home exercise programme involving the lymphoedema decongestive exercise regimen. Participants will be instructed to perform the exercise sequence once daily for 10–15 min. From weeks 13 to 24 of the study, participants in this group will be fast-tracked to the experimental protocol as per Group C below.

Group B: DRE and daytime compression garment group

Participants will take part in the supervised DRE programme either in-person or virtually twice a week for 12 weeks and will be required to wear their daytime compression garment during each DRE session. Sessions will be offered in a group-based format with a ratio of one therapist to two-three participants. Exercise sessions will start with 5 min of warm-up exercises.

The intervention programme involves upper and lower limb exercise and will commence with deep breathing and follow the principles of the decongestive lymphatic sequence from proximal to distal, and then will be performed in reverse order. A 2 min rest period will be observed between exercises. The resistance exercise programme will use weight machines, free weights and/or resistance bands (RBs). Participants will be familiarised with the exercises, weight machines and RBs prior to the start of the training. We will determine the starting weight and the progression using a standardised protocol (online supplemental table S2). The exercise programme will be individualised to the respective participant and the resistance intensity will be tailored based on their baseline assessment and response to exercise in terms of lymphoedema symptoms.

The exercise intensity will be monitored and adjusted, as needed, based on the participant's reported rate of perceived exertion (RPE) ranging on a scale from 1 (very light) to 10 (maximal exertion/ hard). Responses to exercise sessions will also be monitored for each lymphoedema symptom (online supplemental table S3). Participants will be asked prior to exercise and after each session to rate their perceived exertion and to report if they experienced any increase in fatigue, or negative changes in lymphoedema symptoms. If the symptoms are stable, and the participant's exercise perceived exertion falls within the recommended mild to moderate intensity range (2–5 on RPE), the exercise programme will be progressed. This will be done by first increasing the number of repetitions (10, 12, 15 reps) and then the resistance weight.

Group C: DRE and adjustable compression garment group

Participants in this group will follow the same supervised DRE protocol as per group B; however, they will be assigned to wear an adjustable compression wrap when performing the DRE programme.

After the 12 week intervention, women in Group B and C will continue the same programme (maintenance

exercise period) twice weekly for an additional 12 weeks with the option of continuing in-person or virtually.

Primary outcome

Lymphoedema arm volume

The primary outcome will be the percentage change in arm LRV (online supplemental table S4: calculation formula). Lymphoedema will be objectively measured using the optoelectronic limb volumeter (perometer). The perometer is a valid, reliable and sensitive method for quantifying limb volume.^{22–24}

Secondary outcomes

Extracellular fluid status

Bioimpedance analysis (BIA) is specially designed to estimate extracellular fluid status within the arm. BIA measures the affected and unaffected limb's impedance ratio, and the resulting calculated index provides an estimate of extracellular fluid volume.²⁵ The BIA is a sensitive, valid and reliable measurement method.^{26–29}

Muscle strength

Muscle strength will be assessed with the one-repetition maximum (1-RM) method for bench press, leg press and seated row. The 1-RM is the maximal weight that can be lifted once using proper form, a smooth motion and without pain or other symptoms.³⁰

Grip strength

The Jamar hydraulic hand dynamometer, a valid and reliable tool, will be used to measure grip strength^{31 32}. Participants will be tested using standardised procedures. Participants will be standing with their arm slightly abducted and elbow extended, and will be asked to squeeze the handle of the dynamometer as hard as possible for five seconds. Two measurements will be taken for each hand and the highest value will be recorded.

Shoulder ROM

Shoulder active and passive ROM will be measured following standardised procedures^{33 34} using a traditional goniometer. Each arm will be measured separately for the following movements: flexion, abduction, internal, external rotation and horizontal abduction. Active ROM will be assessed with the participant in a sitting position with their back in an upright position to prevent compensation by trunk muscles. Passive shoulder ROM and horizontal abduction will be performed in the supine position.

Health-related QOL

The Lymphoedema Functioning, Disability and Health is a lymphoedema-specific outcome questionnaire that will be used to assess HRQOL. It is a valid tool with high reliability (ICC >0.90) in women with BCRL.³⁵ The Rand Short Form-36 Version 2 will be used to assess general HRQOL. It is a validated self-report measure with excellent test-retest reliability.³⁶

Body Image

The Body Image and Relationships Scale (BIRS) is a self-report measure of body image and relationships.^{11 37} The BIRS has been shown to have a satisfactory test–retest reliability and internal consistency in addition to convergent and divergent validity.³⁷

Physical activity

The Godin Leisure-Time Exercise Questionnaire will be used to assess the physical activity level. It is a valid, reliable and sensitive tool among different populations, including breast cancer survivors.^{38 39}

Body mass index

Body height and weight will be measured, and body mass index will be calculated.

Adherence

Participants will be asked to record their adherence to their assigned exercise and compression intervention programme using a daily diary. The adherence diary will collect details on exercise sessions performed each day, including sets, repetitions and resistance weight, as well as use of the assigned compression sleeve (ie, use of the garment during exercises and number of hours per day and days per week the compression sleeve is worn). Adherence is considered to be high if participants report 80% or greater adherence to the exercise programme and the compression use.

Adverse events

We will monitor adverse events as well as any additional treatments required to manage any exacerbations of lymphoedema.

Exploratory outcomes

The difference in mean outcomes between DRE groups

We will explore differences between groups B and C to inform future research.

Arm tissue composition volume

MRI will be used to determine differences in arm muscle mass, fat and extracellular fluid between limbs over time. An approach called chemical shift encoded (CSE) MRI will be used to separate the signal sources from water and fat. Additionally, the water environments will be further characterised using a method called T_1 -mapping. The T_1 time (longitudinal relaxation time constant) is an MRI property of the water that reflects the local environment, where water within healthy skeletal muscle has T_1 values of ~1400ms. Increased T_1 values reflect oedema and fibrosis within the muscle tissue with values reaching ~3000ms for free water pools, such as those contained within subcutaneous fat. A combined CSE and T_1 -mapping approach will be used to quantify volumes of muscle and fat and to characterise the water environment in all tissues.⁴⁰ Multiple axial slices (4mm slice thickness, 0.5mm in-plane resolution) will provide full three-dimensional coverage of the arm. See [figure 3](#). MRI is a reliable method that has been used in lymphoedema for diagnosis and treatment evaluation.^{14 41 42}

COVID-19 accommodations

In the event of limitations related to, or suspension of in-person testing, objective testing will be conducted virtually and will include:

- Self-Circumference Measurements⁴³ will replace arm volume measurements.

STATISTICAL CONSIDERATIONS

Sample size

The sample size for the study was based on the findings of the pilot vanguard trial phase. Using the point estimates and measures of variability derived for LRV of the 12 week post intervention, we estimated a mean reduction of 18% in lymphoedema (SD: 16%) in favour of the combined data from the intervention groups. As a result of the interim analyses, an alpha adjustment was required to preserve the overall type I error rate. Thus, the value for the level of significance

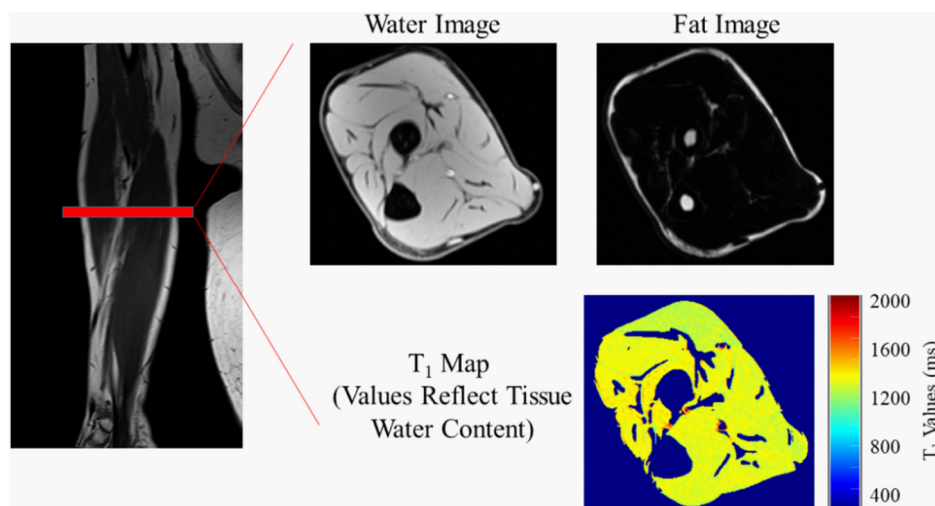


Figure 3 MRI—one sample slice.



for this study was revised from 0.05 to 0.01. The estimated sample size of 51 participants or 17 per group achieves about 86% power (significance level: $p=0.01$). Considering a 10% loss to follow-up/ withdrawal, and one level of stratification, an additional nine participants will be added for a total sample size of 60 including the 20 participants from the pilot study. Thus, 40 more participants will be recruited to the trial.

Statistical analysis plan

Baseline medical and demographic characteristics, arm dominance relative to the lymphoedematous arm, and adverse events of the three groups will be compared using one-way Analysis of Variance (ANOVA) for continuous data and Pearson's χ^2 tests for categorical data. The primary analysis will compare changes between the groups from baseline to week 12 with regard to percent change in arm lymphoedema volume, arm tissue composition, bioimpedance analysis, muscle strength, shoulder range of motion, physical activity, QOL, body image and adherence-related outcomes. The comparisons over time (baseline, 12weeks and 24weeks follow-ups) will be conducted using repeated measures ANOVA and between groups comparisons will be conducted using one-way ANOVA on change scores. Generalised linear models will be used to evaluate the treatment effect in subgroups defined by the strata adjusting for lymphoedema severity (mild or moderate-severe).

Analyses of primary outcomes will be performed at the end of the RCT portion of the trial using an intention to treat analysis. Within-group analyses will also be conducted for primary and secondary outcomes from weeks 13 to 24 following completion of all follow-up measures. If missing data is greater than 30%, multiple imputation techniques will be used. Appropriate sensitivity analysis will be performed to determine the type of missing data, and statistical methods accounting for the type of missing data will be used. All statistical analysis will be conducted using SAS (SAS Institute) V.9.3 software.

Data management and quality control

The Clinical Trials Unit of the Cross Cancer Institute will be responsible for trial oversight. Storing and processing of all patient data will occur in compliance with institutional guidelines. A REDCap database will be used for data collection and monitoring. For quality control, the objective data of participants will be entered by the independent assessor and will be checked by a second independent research assistant. Any hard copy data involving the trial participants will be stored in a secure location in a locked cabinet at the respective centre that can only be accessed by study personnel. Data will be anonymised and stored according to participant number. A linking log is stored separately from the data. On trial completion, data will be accessible through the University of Alberta Libraries Dataserve Network.

Patient and public involvement

The idea for this study was born from patients' input. Women with BCRL often report a worsening of the swelling

with exercise, and a need for better support for exercise. A patient representative actively participated in the design of the study (AM). Findings will be disseminated to study participants and other survivors of breast cancer through workshops and presentations. Study findings will be disseminated through stakeholder groups including the Canadian Lymphoedema Framework, Canadian Physiotherapy Association and the International Lymphoedema Framework to the broader lymphoedema stakeholder community.

ETHICS AND DISSEMINATION

Ethical and safety consideration

Ethical approval was obtained from the Health Research Ethics Board of Alberta: Cancer Committee. All participants will be required to provide written informed consent and will be free to withdraw from the trial at any time, for any reason.

Dissemination plan

This trial will answer key questions on the effect of a combined exercise and compression intervention on arm lymphoedema volume and tissue composition. The study results will be disseminated through scientific peer-reviewed publications, and presented at national and international conferences, and other media portals. The programme protocol will be presented to healthcare professionals and shared with patient groups through clinical workshops and webinars.

Author affiliations

¹Department of Physical Therapy, University of Alberta, Edmonton, Alberta, Canada

²Department of Physical Therapy, University of British Columbia, Vancouver, British Columbia, Canada

³Department of Biomedical Engineering, University of Alberta, Edmonton, Alberta, Canada

⁴Department of Mathematics and Statistical Sciences, University of Alberta, Edmonton, Alberta, Canada

⁵Department of Oncology, University of Alberta, Edmonton, Alberta, Canada

⁶Cancer Rehabilitation Clinic, University of Alberta, Edmonton, Alberta, Canada

Twitter Margaret L McNeely @MargieMcNeely

Contributors MMO, AM and MLM created the concept of the study. MMO, KLC, RBT, JRM, AM and MLM developed the study concept, the exercise program and protocol. SG assisted in the statistical analysis plan and sample size calculation. All authors will oversee the implementation of the protocol and contribute to the acquisition, analysis and interpretation of data. All authors were involved in drafting and revising the protocol manuscript. All authors read and approved the final manuscript.

Funding This work was supported by the Alberta Cancer Foundation Investigator Initiated Trials. Grant number CCI IIT: Fall 2019. Trial Oversight: Clinical Trials Unit, Cross Cancer Institute. Sponsor's Reference: CCI IIT: Fall 2019. Contact name: CCI IIT Project Manager & Quality and Regulatory Advisor. Address: Clinical Research Unit, Cross Cancer Institute, 11 560 University Avenue Edmonton, Alberta Canada T6G 1Z2; Telephone: 780-577-8149; Email: ACB.CCI.Trial.IITProjectManager@albertahealthservices.ca.

Disclaimer This funding body had no role in the design of this study and will not have any role in its execution, analyses, interpretation of the data, or decision to submit results.

Competing interests None declared.

Patient and public involvement Patients and/or the public were involved in the design, or conduct, or reporting, or dissemination plans of this research. Refer to the Methods section for further details.

Patient consent for publication Not applicable.

Provenance and peer review Not commissioned; externally peer reviewed.

Supplemental material This content has been supplied by the author(s). It has not been vetted by BMJ Publishing Group Limited (BMJ) and may not have been peer-reviewed. Any opinions or recommendations discussed are solely those of the author(s) and are not endorsed by BMJ. BMJ disclaims all liability and responsibility arising from any reliance placed on the content. Where the content includes any translated material, BMJ does not warrant the accuracy and reliability of the translations (including but not limited to local regulations, clinical guidelines, terminology, drug names and drug dosages), and is not responsible for any error and/or omissions arising from translation and adaptation or otherwise.

Open access This is an open access article distributed in accordance with the Creative Commons Attribution Non Commercial (CC BY-NC 4.0) license, which permits others to distribute, remix, adapt, build upon this work non-commercially, and license their derivative works on different terms, provided the original work is properly cited, appropriate credit is given, any changes made indicated, and the use is non-commercial. See: <http://creativecommons.org/licenses/by-nc/4.0/>.

ORCID iDs

Kristin L Campbell <http://orcid.org/0000-0002-2266-1382>

Margaret L McNeely <http://orcid.org/0000-0003-4376-4847>

REFERENCES

- Shah C, Vicini FA. Breast cancer-related arm lymphedema: incidence rates, diagnostic techniques, optimal management and risk reduction strategies. *Int J Radiat Oncol Biol Phys* 2011;81:907–14.
- DiSipio T, Rye S, Newman B, et al. Incidence of unilateral arm lymphoedema after breast cancer: a systematic review and meta-analysis. *Lancet Oncol* 2013;14:500–15.
- Fu MR, Axelrod D, Haber J. Breast-Cancer-Related lymphedema: information, symptoms, and risk-reduction behaviors. *J Nurs Scholarsh* 2008;40:341–8.
- Pusic AL, Cemal Y, Albornoz C, et al. Quality of life among breast cancer patients with lymphedema: a systematic review of patient-reported outcome instruments and outcomes. *J Cancer Surviv* 2013;7:83–92.
- Ridner SH, Fu MR, Wanchai A, et al. Self-Management of lymphedema: a systematic review of the literature from 2004 to 2011. *Nurs Res* 2012;61:291–9.
- Fu MR, Deng J, Armer JM. Putting evidence into practice: cancer-related lymphedema. *Clin J Oncol Nurs* 2014;18 Suppl:68–79.
- National Lymphedema Network. Position statement of the National lymphedema network: topic: the diagnosis and treatment of lymphedema, 2011. Available: <https://lymphnet.org/position-papers>
- National Lymphedema Network. Position statement of the National lymphedema network: topic: exercise for lymphedema patients, 2011. Available: <https://lymphnet.org/position-papers>
- Kwan ML, Cohn JC, Armer JM, et al. Exercise in patients with lymphedema: a systematic review of the contemporary literature. *J Cancer Surviv* 2011;5:320–36.
- Paramanandam VS, Roberts D. Weight training is not harmful for women with breast cancer-related lymphoedema: a systematic review. *J Physiother* 2014;60:136–43.
- Schmitz KH, Ahmed RL, Troxel A, et al. Weight lifting in women with breast-cancer-related lymphedema. *N Engl J Med* 2009;361:664–73.
- Boris M, Weindorf S, Lasinkski S. Persistence of lymphedema reduction after noninvasive complex lymphedema therapy. *Oncology* 1997;11:99–109; discussion 110, 113–4.
- Ko DS, Lerner R, Klose G, et al. Effective treatment of lymphedema of the extremities. *Arch Surg* 1998;133:452–8.
- Johansson K, Klernäs P, Weibull A, et al. A home-based weight lifting program for patients with arm lymphedema following breast cancer treatment: a pilot and feasibility study. *Lymphology* 2014;47:51–64.
- Cormie P, Pampa K, Galvão DA, et al. Is it safe and efficacious for women with lymphedema secondary to breast cancer to lift heavy weights during exercise: a randomised controlled trial. *J Cancer Surviv* 2013;7:413–24.
- Hayes SC, Reul-Hirche H, Turner J. Exercise and secondary lymphedema: safety, potential benefits, and research issues. *Med Sci Sports Exerc* 2009;41:483–9.
- Johansson K, Tibe K, Weibull A, et al. Low intensity resistance exercise for breast cancer patients with arm lymphedema with or without compression sleeve. *Lymphology* 2005;38:167–80.
- Executive Committee. The diagnosis and treatment of peripheral lymphedema: 2016 consensus document of the International Society of Lymphology. *Lymphology* 2016;49:170–84.
- Stout NL, Pfalzer LA, Levy E. Segmental limb volume change as a predictor of the onset of lymphedema in women with early breast cancer. *PM&R* 2011;3:1098–105.
- Czerniec SA, Ward LC, Lee M-J, et al. Segmental measurement of breast cancer-related arm lymphoedema using perometry and bioimpedance spectroscopy. *Support Care Cancer* 2011;19:703–10.
- Moffatt C, Keeley V, Quéré I. The concept of chronic Edema-A neglected public health issue and an international response: the LIMPRINT study. *Lymphat Res Biol* 2019;17:121–6.
- Stanton AW, Northfield JW, Holroyd B, et al. Validation of an optoelectronic limb volumeter (Perometer). *Lymphology* 1997;30:77–97.
- Deltombe T, Jamart J, Recloux S, et al. Reliability and limits of agreement of circumferential, water displacement, and optoelectronic volumetry in the measurement of upper limb lymphedema. *Lymphology* 2007;40:26–34.
- Tierney S, Aslam M, Rennie K, et al. Infrared optoelectronic volumetry, the ideal way to measure limb volume. *Eur J Vasc Endovasc Surg* 1996;12:412–7.
- Cornish B. Bioimpedance analysis: scientific background. *Lymphat Res Biol* 2006;4:47–50.
- Czerniec SA, Ward LC, Refshauge KM, et al. Assessment of breast cancer-related arm lymphedema--comparison of physical measurement methods and self-report. *Cancer Invest* 2010;28:54–62.
- Ward LC, Bunce IH, Cornish BH, et al. Multi-Frequency bioelectrical impedance augments the diagnosis and management of lymphoedema in post-mastectomy patients. *Eur J Clin Invest* 1992;22:751–4.
- Hayes S, Cornish B, Newman B. Comparison of methods to diagnose lymphoedema among breast cancer survivors: 6-month follow-up. *Breast Cancer Res Treat* 2005;89:221–6.
- Jain MS, Danoff JV, Paul SM. Correlation between bioelectrical spectroscopy and perometry in assessment of upper extremity swelling. *Lymphology* 2010;43:85–94.
- Fleck SJ, Kraemer W. Designing resistance training programs. 4E: *Human Kinetics* 2014.
- Shechtman O, Gestewitz L, Kimble C. Reliability and validity of the DynEx dynamometer. *J Hand Therapy* 2004;17:438.
- Svens B, Lee H. Intra- and inter-instrument reliability of Grip-Strength measurements: GripTrack™ and Jamar® hand dynamometers. *Br J Hand Ther* 2005;10:47–55.
- Clarkson HM. *Joint motion and function assessment: a research-based practical guide*. Lippincott Williams & Wilkins, 2005.
- Kolber MJ, Hanney WJ. The reliability and concurrent validity of shoulder mobility measurements using a digital inclinometer and goniometer: a technical report. *Int J Sports Phys Ther* 2012;7:306.
- Devoogdt N, Van Kampen M, Geraerts I, et al. And health questionnaire (Lymph-ICF): reliability and validity. *Physical therapy* 2011;91:944–57.
- Brazier JE, Harper R, Jones NM, et al. Validating the SF-36 health survey questionnaire: new outcome measure for primary care. *BMJ* 1992;305:160–4.
- Hormes JM, Lytle LA, Gross CR, et al. The body image and relationships scale: development and validation of a measure of body image in female breast cancer survivors. *J Clin Oncol* 2008;26:1269–74.
- Godin G, Jobin J, Bouillon J. Assessment of leisure time exercise behavior by self-report: a concurrent validity study. *Can J Public Health* 1986;77:359.
- Amireault S, Godin G, Lacombe J, et al. Validation of the Godin-Shephard leisure-time physical activity questionnaire classification coding system using accelerometer assessment among breast cancer survivors. *J Cancer Surviv* 2015;9:532–40.
- Thompson RB, Chow K, Mager D. Simultaneous proton density fat-fraction and imaging with water-specific T1 mapping (PROFIT1): application in liver. *Magn Reson Med* 2021;85:223–38.
- Gardner GC, Nickerson JP, Watts R, et al. Quantitative and morphologic change associated with breast cancer-related lymphedema. Comparison of 3.0T MRI to external measures. *Lymphat Res Biol* 2014;12:95–102.
- Rane S, Donahue PMC, Towse T, et al. Clinical feasibility of noninvasive visualization of lymphatic flow with principles of spin labeling MR imaging: implications for lymphedema assessment. *Radiology* 2013;269:893–902.
- Rafn BS, McNeely ML, Camp PG, et al. Self-measured arm circumference in women with breast cancer is reliable and valid. *Phys Ther* 2019;99:240–53.