

Dissected peripancreatic tissue margin is a critical prognostic factor and is associated with a *K-ras* gene mutation in pancreatic ductal adenocarcinoma

NOBUYUKI NISHIZAWA^{1*}, YUSUKE KUMAMOTO^{1*}, HIROSHI KATOH¹, HIDEKI USHIKU¹, KEIGO YOKOI¹, TOSHIMICHI TANAKA¹, SATORU ISHII¹, KAZUHARU IGARASHI¹, HIROSHI TAJIMA¹, TAKASHI KAIZU¹, TSUTOMU YOSHIDA², MAKOTO SAEGUSA², MASAHIKO WATANABE¹ and KEISHI YAMASHITA^{1,3}

Departments of ¹Surgery and ²Pathology, Kitasato University Hospital; ³Division of Advanced Surgical Oncology, Research and Development Center for New Medical Frontiers, Kitasato University School of Medicine, Sagami-hara, Kanagawa 252-0374, Japan

Received November 24, 2017; Accepted November 8, 2018

DOI: 10.3892/ol.2018.9839

Abstract. We previously reported that the dissected pancreatic tissue margin (DPM) and the preoperative serum level of carbohydrate antigen 19-9 (preCA19-9) were independent prognostic factors in pancreatic ductal adenocarcinoma (PDAC). In the current study, the prognostic relevance of these factors, including their molecular associations, were validated. A total of 161 patients with PDAC underwent a pancreatectomy between 1986 and 2013, and a multivariate Cox proportional hazards model and a propensity score-based model validated the prognostic importance of DPM. The prognostic factors were compared with the mutation profiles of the *K-ras* and *TP53* genes. Univariate prognostic analysis of disease-specific survival (DSS) demonstrated that DPM ($P < 0.0001$), preCA19-9 ($P < 0.0001$) and Union for International Cancer Control (UICC) stage ($P < 0.0001$), were all significantly associated with poor outcome in PDAC. A multivariate Cox proportional hazards model confirmed that preCA19-9 ($P = 0.0002$) and DPM ($P = 0.0002$) remained as prognostic factors independent of UICC stage ($P = 0.0015$). The combination of preCA19-9 and DPM to predict prognosis could accurately identify the long-term survivors of PDAC (70% 5-year DSS), and a multivariate logistic regression model identified that DPM was the most effective predictor of mortality. The prognostic relevance of DPM was also confirmed ($P = 0.0008$) through propensity

score-based background adjustment of patient bias. *K-ras* gene mutation was significantly associated with DPM ($P = 0.0002$), and DPM-positive patients demonstrated recurrence of distant metastasis in 67% of cases. Therefore, DPM is a critical prognostic indicator in PDAC. In combination with preCA19-9, DPM may be useful to identify long-term survivors of PDAC. Furthermore, to the best of our knowledge, the current study was the first to discover that DPM can represent a poor prognosis based putatively on its association with the *K-ras* gene mutation.

Introduction

Pancreatic cancer is the twelfth most common malignancy, with 337,872 cases reported in 2012, and the seventh leading cause of cancer-associated mortality, with 330,391 mortalities reported in 2012, worldwide (1). Pancreatic ductal adenocarcinoma (PDAC) is one of the most lethal malignancies. PDAC is the fourth leading cause of cancer-associated mortality in the USA (2); without any substantial improvement in curative therapies, it is anticipated to be the second leading cause of cancer-associated mortality by 2030 (3). Surgical resection is currently the only option to potentially achieve long-term survival (4). However, the 5-year survival rate is only ~10% following surgical therapy (5); therefore, postoperative adjuvant chemotherapy is being developed to improve prognosis. In the USA in 1985, the Gastrointestinal Tumor Study Group reported the use of postoperative adjuvant therapy for the first time (6). Later, in 2007, the CONKO-001 trial evaluated the use of gemcitabine (7). The effectiveness of postoperative S-1 adjuvant chemotherapy was revealed in Japan in 2016 (8). Nevertheless, the 5-year survival rate following surgery and adjuvant chemotherapy remains at only ~20% (5,9). Due to postoperative quality of life degradation and other factors, there are a number of problems that result in insufficient adjuvant chemotherapy. Therefore, the importance of neoadjuvant therapy has recently been the focus of numerous studies (10). Treatment options for PDAC will diversify in the future and it will be necessary to make the optimal choice of therapy.

Correspondence to: Dr Keishi Yamashita, Division of Advanced Surgical Oncology, Research and Development Center for New Medical Frontiers, Kitasato University School of Medicine, 1-15-1 Kitasato, Minami-ku, Sagami-hara, Kanagawa 252-0374, Japan
E-mail: keishi23@med.kitasato-u.ac.jp

*Contributed equally

Key words: carbohydrate antigen 19-9, dissected peripancreatic tissue margin, prognostic factor, *K-ras*

PDAC is postulated to lead to systemic metastasis, which is accompanied by an accumulation of various gene mutations (11,12). However, which gene mutations are associated with clinicopathological prognostic factors is not clear. By identifying gene mutations that are associated with prognostic factors, there is a possibility that the range of treatment options will be increased. We previously reported that the preoperative carbohydrate antigen 19-9 (preCA19-9) level and the dissected peripancreatic tissue margin (DPM) were independent prognostic factors in PDAC (13). To date, it has repeatedly been reported that a positive margin and CA19-9 are prognostic factors in a univariate manner (14-16). However, each previous study included different clinicopathological factors and multivariate prognostic analysis revealed different sets of independent prognostic factors. To the best of our knowledge, our previous study was the first to report that the two factors can be simultaneously evaluated as independent prognostic factors (13). Analysis that combines these important prognostic factors may be useful in clinical management. However, our previous study had limitations, including a small sample size and follow-up period.

The aims of the current study were to validate the prognostic relevance of preCA19-9 and DPM as independent prognostic factors in primary PDAC and to clarify the associations between predictive factors and gene mutation status.

Materials and methods

Registration of patients. From January 1986 to December 2013, 161 patients (median, 65; range 38-88), including 85 male and 76 female patients, with histologically confirmed PDAC underwent a pancreatectomy with D0-D3 lymph node dissection at the Department of Surgery, Kitasato University Hospital (Kanagawa, Japan). Patients with histological variants, including mucinous cystic adenocarcinoma, intraductal papillary adenocarcinoma, acinar cell carcinoma and endocrine carcinoma were excluded from the study. Preoperative workup included an ultrasonography, computed tomography, endoscopic retrograde pancreatography, endoscopic ultrasonography and magnetic resonance cholangiopancreatography to evaluate primary and metastatic tumor sites.

The preoperative serum CA19-9 levels were investigated immediately prior to surgery, avoiding the effects of obstructive jaundice and/or inflammation of the biliary duct. The recommended upper limit of a normal CA19-9 level is 37 U/ml, when CA19-9 levels are determined and defined from the standard deviations of healthy individuals. CA19-9 levels were determined using a chemiluminescent enzyme immunoassay kit (LUMIPLSE G; cat. no., CA19-9-N) obtained from Fujirebio US, Inc. (Malvern, PA, USA).

The surgical resection tissues were obtained from pancreaticoduodenectomy (n=39), pylorus-preserving pancreaticoduodenectomy (n=74), distal pancreatectomy (n=43) and total pancreatectomy (n=5). Partial resection of the portal vein was performed if the surgeon observed tumor invasion of the portal vein. Intraoperative pathologic assessment of the proximal or distal pancreatic margins was performed using frozen-tissue sections. If the pancreatic margin was positive for cancerous cells, further resection of the pancreas was performed. The present study was approved by the Institutional

Review Board for Observation and Epidemiological Study, Kitasato University Medical Ethics Organization (approval no. B18-017; Kanagawa, Japan). All patients agreed to the use of their samples in scientific research and written informed consent was obtained from all patients.

Pathological investigation. All histological and other clinicopathological factors were judged independently and blindly by histopathologists, and all histopathologic factors from the Japanese classification system (JCS) version 6 (17) were obtained from medical records. In the current study, stage was determined according to the 6th edition of the International Union Against Cancer (UICC) tumor-node-metastasis classification (18). Assessment of cancer infiltration at the surgical margin was evaluated according to the JCS, as DPM, pancreatic cut end margin or bile duct cut end margin. According to the National Comprehensive Cancer Network guideline (19), the surgical margin was defined as a superior mesenteric artery (SMA) margin, posterior margin, portal vein groove margin, portal vein margin, pancreatic margin or pancreatic surface and bile duct margin. Details of the DPM included the SMA margin, posterior margin and portal vein groove margin. Surgical margin-positive was defined as tumor cells present in the dissection surface, as judged by histopathologists. When requested by a pathologist, the gene mutation was investigated using non-radioisotopic single-strand conformation polymorphism (SSCP) from each DNA sample (n=97).

DNA examination and search for the mutated K-ras gene using SSCP. For simultaneous DNA analysis, the previously described protocols were conducted (20,21). Briefly, this consisted of five steps. Firstly, to prevent cross-contamination, small sections of fresh solid tissue were sampled by scraping with disposable bamboo combs, which are 3x3x120 mm rods made of bamboo with a spatula like ends. Secondly, one-step DNA extraction with lysis buffer containing proteinase K, Nonidet P-40 and Tween 20 was performed. Subsequently, polymerase chain reaction (PCR) was performed with each gene primer presented in Table I and the conditions presented in Table II. Next, SSCP analysis with polyacrylamide gels was performed, and detection was achieved by silver staining. In this analysis, mutated bands were evident at 1:64 dilutions of the mutated alleles.

Follow-up and postoperative therapy. A total of 108 patients (67%) received empirical adjuvant therapy; this consisted of 105 patients who received chemotherapy and 3 patients who received radiotherapy. Another 23 patients (14%) received therapy for remnant tumor; specifically 22 patients who received chemotherapy and 1 patient who received radiotherapy. A number of chemotherapy regimens consisted of 5-fluorouracil (5-FU)-based chemotherapy, including 5-FU only (n=3), 5-FU/cisplatin (n=9) or 5-FU/Adriamycin/mitomycin-C/nimustine hydrochloride (n=2) by venous, portal or arterial infusion. Other chemotherapy regimens included tegafur/uracil (n=11), 5'-deoxy-5-fluorouridine (n=3) or TS-1 (n=3) as oral therapy, or mitomycin-C (n=7). In addition to gemcitabine (n=83) or gemcitabine+TS-1 (n=6) by venous or arterial infusion. Radiotherapy consisted of 1.8 Gy per day to a total dose of 50 Gy. Routine follow-up consisted of physical examination, laboratory studies and computed tomography imaging at 3- to 4-month intervals for the first 2 years,

Table I. Primer sequences used for polymerase chain reaction.

Gene	Exon	Forward sequence	Reverse sequence	Amplified fragment length, bp	Codons
K-ras	1	5'-GACTGAATATAACTTGTGG-3'	5'-GCTATTGTTGGATCAATATTC-3'	108	2-37
	2	5'-GATTCCTACAGGAAGCAAGT-3'	5'-TAATGGTGAATATCTTC-3'	185	38-97
TP53	5	5'-TTCTCTTCCTGCAGTACTC-3'	5'-GCCCCAGCTGCTCACCATCGCTA-39	214	125-186
	6	5'-GCCTCTGATTCTCACTGATTG-3'	5'-AGTTGCAAACCAGACCTCAG-3'	157	187-224
	7	5'-CCTCATCTTGGGCCTGTGTTATC-3'	5'-CAAGTGGCTCCTGACCTGGAGTC-3'	154	225-261
	8	5'-CCTATCCTGAGTAGTGGTAA-3'	5'-GTCCTGCTTGCTTACCTCGC-3'	166	262-306
	9	5'-GCCTCTTCCTAGCACTGCC-3'	5'-CCAAGACTTAGTACCTGAAG-3'	101	307-331

Table II. Polymerase chain reaction cycle conditions.

Fresh samples	
Conditions	No. of cycles
94°C 3 min	1
52°C for 1 min, 72°C for 1 min, 94°C for 30 sec	2
52°C for 45 sec, 72°C for 30 sec, 94°C for 20 sec	35
52°C for 45 sec, 72°C for 3 min	1

at 6-month intervals for years 3 to 5, and followed by annual follow-ups from thereon. Only the first sites of recurrence were recorded.

Statistical analysis. Continuous variables were compared using the Student's t-test and nominal variables were compared using Pearson's chi-square test. The Kaplan-Meier method was used for disease-specific survival (DSS) analysis and the difference in survival rate was assessed by log-rank test (22). DSS was measured from the date of surgery to the date of mortality or last follow-up. Mortality associated with causes other than PDAC were not counted in this measurement. The variables that demonstrated prognostic potential suggested by univariate analysis ($P < 0.05$) were subjected to multivariate analysis with a Cox proportional hazards model. Propensity scores were matched using a caliper width of 0.2 multiplied by the standard deviation of values that was calculated by a logistic regression analysis. A receiver operating characteristic (ROC) curve was generated using JMP software v.11.0 (SAS institute, Cary, NC, USA) and the area under the curve (AUC) was used to optimize the best cut-off value. The associations between *K-ras* gene mutation and prognostic factors were examined with the Student's t-test. $P < 0.05$ was considered to indicate a statistically significant difference. All statistical analysis was performed using JMP software v.11.0.

Results

Patients' characteristics and univariate prognostic analysis in PDAC. The first aim of the current study was to validate

the prognostic relevance of preCA19-9 and DPM, which have previously been identified as independent prognostic factors in PDAC (12). The characteristics of 161 patients with PDAC and the univariate prognostic factors are summarized in Table III. Significant prognostic factors included lymphatic permeation factor (ly; $P = 0.036$), vascular permeation factor (v; $P = 0.0087$), tumor differentiation ($P = 0.0037$), intrapancreatic nerve invasion factor (ne; $P = 0.00025$), retropancreatic tissue invasion factor (RP; $P = 0.0053$), portal venous system invasion factor (PV; $P = 0.0133$), extrapancreatic nerve plexus invasion factor (PL; $P = 0.0004$), arterial system invasion factor (A; $P = 0.0019$), preCA19-9 level ($P < 0.0001$), DPM ($P < 0.0001$) and UICC 6th stage ($P < 0.0001$). Arterial invasion was composed of pT4 (celiac artery or superior mesenteric artery; $n = 2$) and non-pT4 (splenic artery; $n = 3$). By increasing the number of patients from the previous pilot study (13), several pathological factors, which are not UICC staging factors, including ly, v, ne, RP, PV and A, were newly identified as univariate prognostic factors in PDAC.

Multivariate Cox proportional hazards model in PDAC. The ten variables that exhibited prognostic potential identified by univariate prognostic analysis, including ly, v, tumor differentiation, ne, RP, PV, PL, A, preCA19-9, DPM and UICC 6th stage, were subjected to multivariate analysis. This analysis revealed that preCA19-9 [$P = 0.0002$, relative risk (RR)=2.8], DPM positive ($P = 0.0002$, RR=2.4), PV ($P = 0.01$, RR=2.0) and A ($P = 0.035$, RR=3.3) were the remaining prognostic factors independent of UICC stage ($P = 0.0015$; Table III).

Similar to previous studies (23,24), preCA19-9 and DPM were identified as independent prognostic factors. The Kaplan-Meier curves of each factor are presented in Fig. 1A for UICC stage, Fig. 1B for PreCA19-9 and Fig. 1C for DPM. Notably, all DPM-positive patients succumbed to the disease within 5 years, while a number of patients with preCA19-9 levels > 37 U/ml were alive with no recurrence after five years.

In addition, survival outcomes for the combination of preCA19-9 and DPM are presented in Table III and Fig. 1D. The prognosis of patients with PDAC was sub-classified into four groups (A, B, C and D) according to preCA19-9 and DPM (group A, preCA19-9 > 37 U/ml and DPM-positive; group B, preCA19-9 > 37 U/ml and DPM-negative; group C, preCA19-9 < 37 U/ml and DPM-positive; and group D, preCA19-9 < 37 U/ml and DPM-negative). Of note, group D demonstrated

Table III. Univariate and multivariate prognostic analysis for 161 patients with PDAC who underwent pancreatectomy.

Variable	No.	Univariate			Multivariate		
		RR	95% CI	P-value ^a	RR	95% CI	P-value ^a
Age, years <65/>65	79/82	0.8	0.6-1.2	0.3150			
Sex Male/female	85/76	1.2	0.8-1.8	0.2628			
Lymphatic invasion Absence/presence	22/139	1.8	1.1-3.5	0.0360	1.5	0.81-2.95	0.2109
Venous invasion Absence/presence	13/148	4	1.5-16.4	0.0087	1.6	0.56-6.91	0.4082
Tumor differentiation Well/other (moderate, poorly)	137/24	2.1	1.2-3.4	0.0037	1.8	0.32-1.01	0.0563
Intrapancreatic nerve invasion th Absence/presence	17/144	3.6	1.6-10.2	0.0025	2	0.87-6.1	0.1083
Retropancreatic tissue invasion Absence/presence	62/99	1.8	1.2-2.7	0.0053	1.2	0.70-1.94	0.5635
Portal venous system invasion Absence/presence	131/30	1.8	1.1-2.9	0.0133	2	1.15-3.22	0.0143
Extrapancreatic nerve plexus invasion Absence/presence	126/35	2.1	1.4-3.2	0.0004	1.5	1.15-3.22	0.1671
Arterial system invasion Absence/presence	156/5	3.8	1.3-8.6	0.0019	2.4	0.78-6.32	0.1173
PreCA19-9 level, U/ml <37/>37	39/122	3.5	2.1-6.4	<0.0001	2.8	1.58-5.46	0.0003
Dissected pancreatic tissue margin Negative/positive	101/60	2.9	2.0-4.3	<0.0001	2.5	1.58-3.99	<0.0001
Stage ^b							
0-I	9	Reference		<0.0001	Reference		0.0032
II	122	9.6	2.1-169		4.5	0.92-80.4	
III	7	56.7	9.9-1067.6		13.5	2.0-268	
IV	23	30.5	6.3-547.8		9.4	1.81-173	
PreCA19-9 and DPM combination							
A; Over 37 U/ml and Positive	51	Reference		<0.0001			
B; Over 37 U/ml and Negative	71	2.6	1.7-3.9				
C; <37 U/ml and Positive	9	2.6	1.2-6.3				
D; <37 U/ml and Negative	30	10.2	5.0-23.8				

^aAccording to log-rank test. ^bAccording to the 6th edition of the International Union Against Cancer staging system. RR, relative risk; CI, confidence interval; preCA19-9, preoperative carbohydrate antigen 19-9; DPM, dissected peripancreatic tissue margin.

the best clinical outcome and included long-term survivors (10/30) of PDAC (Fig. 1D).

Prognostic relevance of DPM-positive status in PDAC following propensity score matching. A DPM-positive status may be the best indicator of highly aggressive tumor characteristics in PDAC; therefore, a risk model for DPM prediction was generated by logistic regression analysis. The clinicopathological factors analyzed were as follows: age, gender, ly, v, ne, RP, PV, A, PL, UICC stage and preCA19-9.

Using this prediction model, an ROC curve was generated and presented in Fig. 2A (AUC=0.80) and the propensity score (PS) to predict DPM was calculated. The density distribution of PS was analyzed between DPM-positive and DPM-negative patients, and a notable difference in the PS distribution was identified between the groups (Fig. 2B). The matching of PS was performed by logit exchange. The logit exchange scores of the matched cases between both DPM-positive and DPM-negative cases were presented linearly in a scatter plot (Fig. 2C). The logit exchange scores of the matched cases

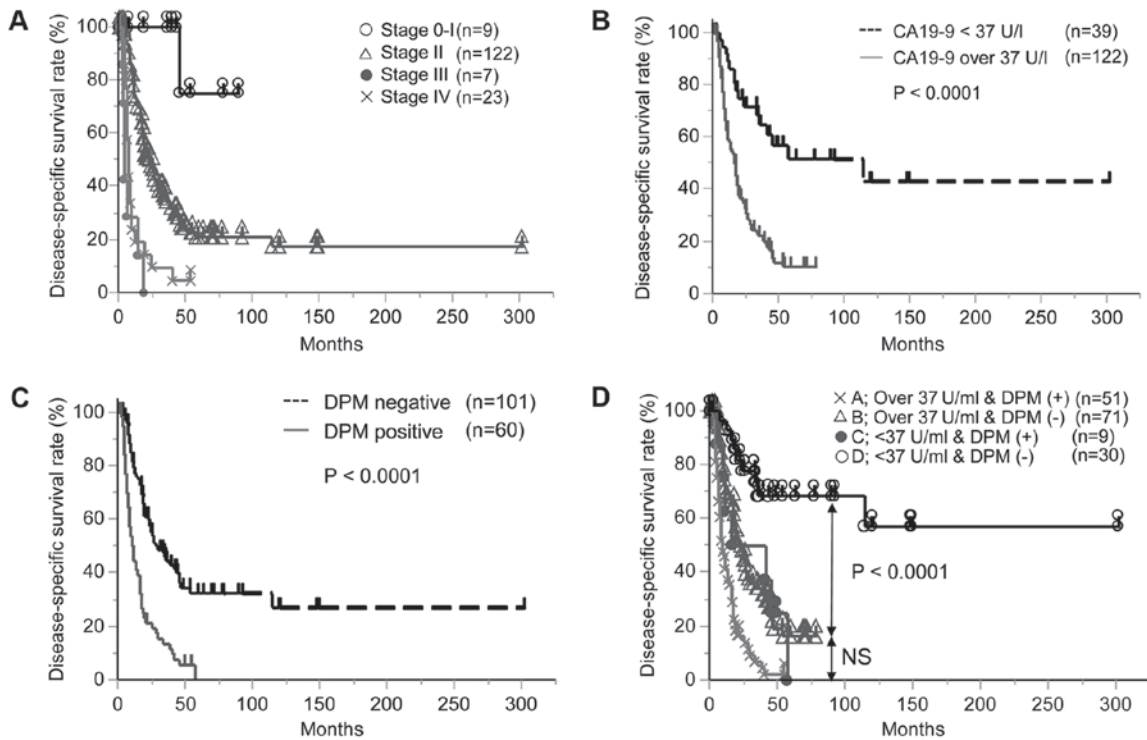


Figure 1. Disease-specific survival rates of pancreatic ductal adenocarcinoma. (A) Kaplan-Meier curve of Union for International Cancer Control stage. (B) Kaplan-Meier curve of preCA19-9 level. (C) Kaplan-Meier curve of DPM status. (D) Kaplan-Meier curve according to combinations of preCA19-9 level and DPM status. Group A, preCA19 >37 U/ml and DPM-positive; group B, preCA19-9 >37 U/ml and DPM-negative; group C, preCA19-9 <37 U/ml and DPM-positive; and group D, preCA19-9 <37 U/ml and DPM-negative. preCA19-9, preoperative carbohydrate antigen 19-9; DPM, dissected peripancreatic tissue margin.

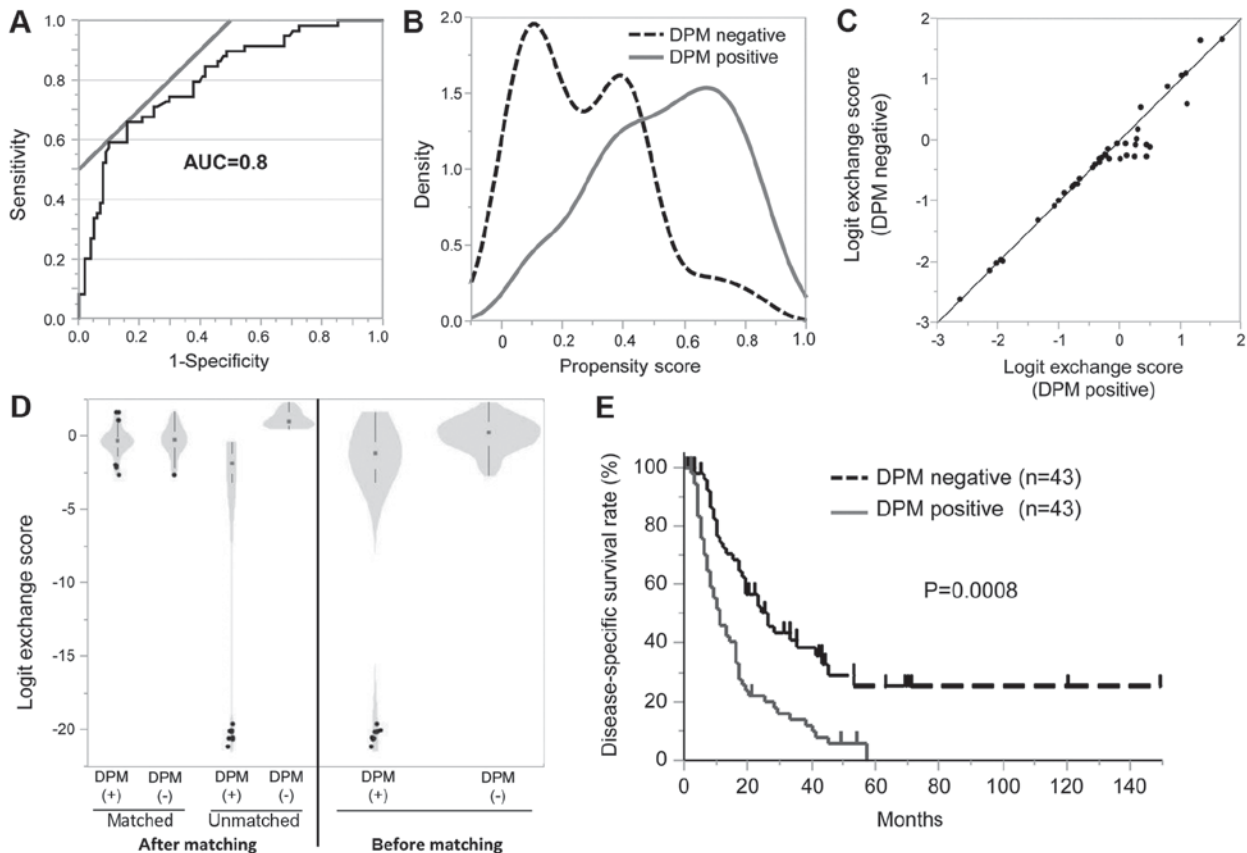


Figure 2. Propensity score matching method. (A) Receiver operating characteristic curve generated by multiplex logistic analysis demonstrated an AUC of 0.80. (B) Density distribution of propensity score. (C) Logit exchange scores of both DPM-positive and DPM-negative cases were aligned linearly in scatter plot. (D) Logit exchange scores of matched DPM-positive and DPM-negative cases were distributed in the same range in Kernel density estimation. (E) Kaplan-Meier curve of DPM following propensity score matching. DPM, dissected peripancreatic tissue margin; AUC, area under the curve.

Table IV. Distribution of potential factors associated with DPM between DPM positive and negative cases prior to and following propensity score matching.

Variable	Prior to matching			Following matching		
	DPM positive (n=59)	DPM negative (n=101)	P-value	DPM positive (n=43)	DPM negative (n=43)	P-value
Age ^a	63.4±9.4	64.4±10.3	0.5172 ^c	64.1±9.1	64.7±10.4	0.81 ^c
Sex						
Male/female	30/29	55/46	0.6590 ^d	22/21	22/21	1.00 ^d
PreCA19-9 level, U/ml						
<37/>37	9/50	30/71	0.0400 ^d	8/35	10/33	0.59 ^d
Stage ^b						
0-I/II/III/IV	0/42/5/12	9/79/2/11	0.0097 ^d	0/33/2/8	0/35/2/6	0.84 ^d
Lymphatic invasion						
Absence/presence	53/6	85/16	0.3056 ^d	38/5	37/6	0.75 ^d
Venous invasion						
Absence/presence	56/3	91/10	0.2664 ^d	41/2	39/4	0.39 ^d
Intrapancreatic nerve invasion						
Absence/presence	56/3	87/14	0.00675 ^d	40/3	40/3	1.00 ^d
Retropancreatic tissue invasion						
Absence/presence	51/8	48/53	<0.0010 ^d	35/8	32/11	0.44 ^d
Portal venous system invasion						
Absence/presence	12/47	18/83	0.6939 ^d	11/32	7/36	0.28 ^d
Extrapancreatic nerve plexus invasion						
Absence/presence	22/37	13/88	0.0003 ^d	9/34	11/32	0.61 ^d
Arterial system invasion						
Absence/presence	3/56	2/99	0.2762 ^d	2/42	1/41	0.56 ^d

^aData are presented as the mean ± standard deviation. ^bAccording to the 6th edition of the International Union Against Cancer staging system. ^cAccording to Student's t-test. ^dAccording to Pearson's chi-square test. DPM, dissected pancreatic tissue margin; preCA19-9, preoperative carbohydrate antigen 19-9.

between DPM-positive and DPM-negative were distributed in Kernel density estimation differently from the unmatched cases (Fig. 2D, left panel), as compared with the differential ranges prior to matching (Fig. 2D, right panel). Following matching, no significant differences were identified for factors potentially affecting DPM between DPM-positive and DPM-negative cases (Table IV). Notably, the factors identified to be associated with DPM positive were RP and RL, and these factors were corrected by score matching. As a result, DPM was demonstrated as a robust prognostic factor in PDAC (P=0.0008; Fig. 2E).

Subsequently, initial recurrent sites were investigated in DPM-positive patients with PDAC. Among the 60 DPM-positive patients, 52 recurrences were identified. Liver metastases were the most prevalent in 21 patients (35%), followed by lymph node metastases in 13 patients (22%), peritoneal dissemination in 5 patients (8%), lung metastasis in 1 patient (35%), nerve plexus of the SMA in 9 patients (15%) and remnant pancreas in 3 patients (5%).

Molecular association of DPM with mutational status of K-ras and p53 genes in PDAC. Subsequently, the associations of DPM

with the mutational status of *K-ras* and *TP53* genes in PDAC were investigated. For *K-ras* gene mutation, 96 patients with PDAC were investigated. *K-ras* gene mutation was identified in 42 patients (44%), among whom 34 patients possessed mutations in exon1 (codon 12 or 13). The Kaplan-Meier curve was generated according to *K-ras* gene mutation status (P=0.043 by the log-rank test and P=0.0047 by the Wilcoxon test; Fig. 3A). Since DPM has been cited as a poor prognostic factor in the present results, univariate analysis was performed for factors associated with DPM status (Table V). RP (P<0.001), PL (P=0.0003) and *K-ras* gene mutation status (P=0.0002) were significantly associated with DPM-positive status. Multivariate analysis confirmed that RP (P=0.037), PL (P=0.026) and *K-ras* gene mutation status (P=0.0004) remained as independent factors of DPM-positive status. A significant association was identified between DPM and *K-ras* gene mutation status (Fig. 3B). DPM-positive patients had a *K-ras* gene mutation in 66.7% (26/39) of cases, while DPM-negative patients exhibited a *K-ras* gene mutation in 28.1% (16/57) of cases. For the *TP53* gene mutation, 67 patients with PDAC were examined and a *TP53* gene mutation was identified in 14 (20.9%). Of these,

Table V. Univariate and multivariate prognostic analysis for DPM.

Variable	Univariate analysis			Multivariate analysis		
	DPM positive (n=59)	DPM negative (n=101)	P-value ^a	Odds ratio	95% CI	P-value ^b
Lymphatic invasion						
Absence/presence	53/6	85/16	0.3148			
Venous invasion						
Absence/presence	56/3	91/10	0.2820			
Intrapancreatic nerve invasion						
Absence/presence	56/3	87/14	0.0822			
Retropancreatic tissue invasion						
Absence/presence	51/8	48/53	<0.0010	3.1	1.1-10.6	0.0373
Portal venous system invasion						
Absence/presence	12/47	18/83	0.6939			
Extrapancreatic nerve plexus invasion						
Absence/presence	22/37	13/88	0.0003	3.9	1.2-14.5	0.0264
Arterial system invasion						
Absence/presence	3/56	2/99	0.2762			
K-ras mutation						
Negative/positive	13/26	41/16	0.0002	5.2	2.07-14.2	0.0004

^aAccording to Pearson's chi-square test. ^bAccording to log-rank test. DPM, dissected pancreatic margin; CI, confidence interval.

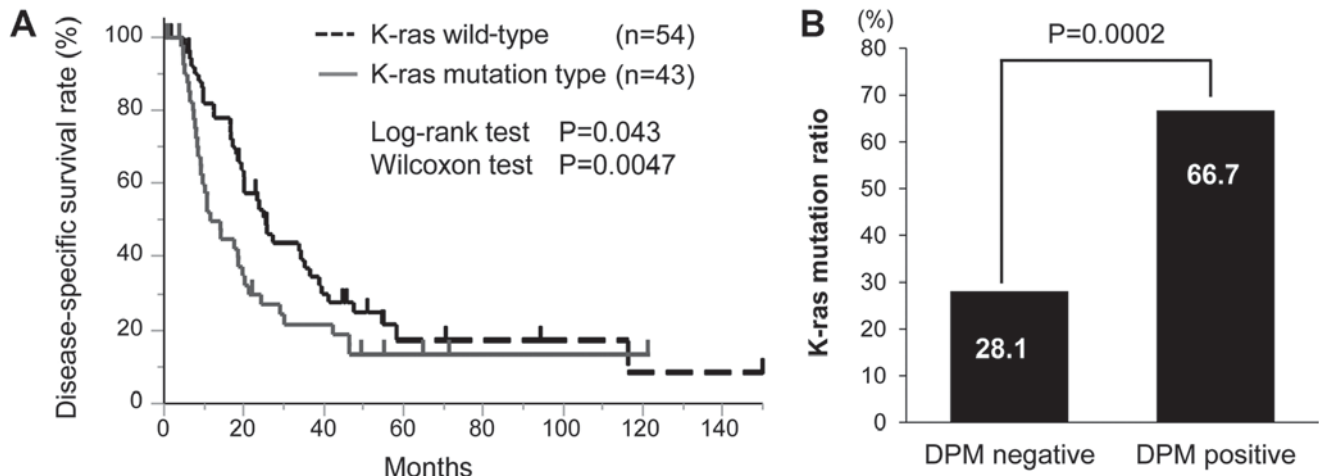


Figure 3. Associations between K-ras mutation and prognostic factors. (A) Comparison of disease-specific survival between *K-ras* gene wild-type and mutation. A significant difference in survival was identified using the Wilcoxon test ($P=0.0047$). (B) The association between DPM status and *K-ras* gene mutation was evaluated by the Student's t-test ($P=0.0002$). DPM, dissected peripancreatic tissue margin.

6 patients were DPM-positive, and no significant difference was identified with regard to DPM status ($P=0.9275$).

Discussion

PDAC is one of the most fatal forms of human malignancy and exhibits a poor 5-year survival rate even following curative resection and postoperative adjuvant chemotherapy (5). The present study indicated that long-term survivors following pancreatectomy can be predicted by a combination of

clinicopathological factors, including preCA19-9 and DPM, which were prognostic factors independent of the cancer stage. These factors have been repeatedly reported in previous studies, therefore, they have been highly validated. However, to the best of our knowledge, no studies have analyzed a combination of these factors. In the current study, patients negative for both preCA19-9 and DPM ($n=30$) demonstrated a 5-year DSS of 68.5% following surgery, with 25 of the patients undergoing postoperative adjuvant chemotherapy. This finding recapitulated and validated our previous study (13) and such

prognostic information may be useful in the development of optimal treatment strategies for PDAC.

The most established biomarker for PDAC diagnosis and prognosis is preCA19-9 (14,23-28). Notably, preCA19-9 level could provide preoperative information and serve as a preoperative prognostic factor potentially able to affect the choice of treatment strategy, including the administration of neoadjuvant therapy. The current study determined that a pancreatectomy should be considered for patients with a low preCA19-9 level, while those with a high level of preCA19-9 tend to exhibit a poorer prognosis and may require neoadjuvant therapy prior to surgery to improve their survival rate. Previously, preoperative chemoradiation has been demonstrated to be a promising strategy to treat aggressive pancreatic cancer, including borderline resectable pancreatic cancer (10). The present study supports this novel promising therapeutic strategy for patients with PDAC and a high level preCA19-9.

By contrast, since DPM is a pathological factor, it cannot be preoperatively informative and preoperative prediction of future recurrence by DPM status is impossible. However, the present study demonstrated that DPM could accurately predict long-term survivors of PDAC following surgery, in combination with preCA19-9. Notably, all cases of DPM-positive PDAC inevitably succumbed to the disease; therefore, DPM status may indicate the tumor aggressiveness of PDAC and reflect specific molecular features.

To the best of our knowledge, the current study was the first to demonstrate that *K-ras* gene mutation is significantly associated with DPM-positive status, compared with DPM-negative status. *K-ras* gene mutation in the resected margin of PDAC has been reported to be a marker representing a poor prognosis (29,30). In the present study, *K-ras* gene mutation was an independent predictor for DPM-positive status in multivariate analysis. Supporting these results, PDAC clones with mutated *K-ras* gene have previously been demonstrated to be persistently present in the retroperitoneal margin. *K-ras* gene mutation has been identified in pancreatic intraepithelial neoplasia, which is a precursor lesion (31). In addition, a previous study that used high-resolution analysis reported >90% of cases have *K-ras* gene mutation in PDAC tumors (32,33). By contrast, but similar to our studies, conventional methods to investigate *K-ras* gene mutation have been widely reported. In a recent meta-analysis (34), the frequencies of *K-ras* gene mutations were reported to range from 47 to 88%. In the present study, the low rate of *K-ras* gene mutation is considered to be influenced by component rates of a small number of tumor cells mixed with a large number of stromal cells. Using conventional methods, it may be difficult to detect a small number of *K-ras* gene mutations in tumors, and the frequency of *K-ras* gene mutation therefore appears lower compared with that observed using high resolution analysis (35). An inducible Kras^{G12D} model elucidated that a precursor lesion with an activated K-ras signal transforms to carcinoma but a precursor lesion with an inactivated K-ras signal undergoes apoptosis (36). These findings may support the hypothesis that mutation of the *K-ras* gene is associated with tumor aggressiveness and micrometastases, which have the potential to disseminate systemically in DPM-positive patients, as observed in the current study.

The detection rate of *K-ras* gene mutation in the present study was low. However, previous studies have identified the frequencies of *K-ras* gene mutation in other cancer types using conventional methods and have repeatedly demonstrated standard values (20,37-40). Therefore, it can be suggested that the present result reflects the conventional mutation rate of PDAC, which may represent dominant clones in the tumor tissues. With regard to positive association of DPM with *K-ras* gene mutation, validation was required for different patient sets, however the experiments performed in the current study could not be repeated due to technical reasons.

From 2014 to 2017, 96 patients with PDAC underwent a pancreatectomy at Kitasato University Hospital and 6 cases were examined for the *K-ras* gene mutation. Among the 6 patients with PDAC, *K-ras* gene mutation was identified in 2 (33%); patients with DPM-positive PDAC demonstrated a *K-ras* gene mutation in 50% (1/2) of cases, while DPM-negative patients exhibited a *K-ras* gene mutation in 25% (1/4) of cases. This result was consistent with the aforementioned results of the current study despite the small patient number. In the future, learning sets should be co-analyzed. Finally, as the recruitment period of the current study was long, numerous operators were involved in the study. Therefore, a number of factors could cause bias and affect the determination of DPM status. Periodical validation is required to confirm the results of the current study.

In conclusion, the present study validated and reiterated the prognostic relevance of DPM and preCA19-9 in patients with primary PDAC. This finding may be useful in the development of a novel treatment strategy for patients with PDAC and a poor prognosis. In addition, the current study revealed an association of DPM status with *K-ras* gene mutation in PDAC. This finding may facilitate the molecular understanding of PDAC and assist the development of molecular targeted therapy. Similar to other cancer types associated with a poor prognosis, multidisciplinary treatment, including preoperative treatment and aggressive surgery, and postoperative treatment, including molecular targeted therapy, should be adopted to further improve the prognosis of patients with PDAC. Thus, the present findings are important.

Acknowledgements

The authors would like to thank Miss Tomomi Miyake (Kitasato University School of Medicine) for her technical assistance.

Funding

No funding was received.

Availability of data and materials

All data generated or analyzed during the present study are included in this published article.

Authors' contributions

NN, YK and KYa designed the study and wrote the initial draft of the manuscript. NN, YK and KYa analysed and interpreted

the data and assisted in the preparation of the manuscript. HK, HU, KYo, TT, SI, KI, HT, TK, TY, MS, YK and MW contributed to the collection and interpretation of the data and critically reviewed the manuscript. All authors approved the final version of the manuscript and agree to be accountable for all aspects of the work in ensuring that questions related to the accuracy or integrity of any part of the work are appropriately investigated and resolved.

Ethics approval and consent to participate

The present study was approved by the Institutional Review Board for Observation and Epidemiological Study, Kitasato University Medical Ethics Organization (approval no. B18-017). All patients agreed to the use of their samples in scientific research. And, written informed consents were obtained from all patients. This study only used these samples. All the data/samples were used anonymously.

Patient consent for publication

Not applicable.

Competing interests

The authors declare that they have no competing interests.

References

- International Agency for Research on Cancer WHO. GLOBOCAN2012: Estimated Cancer Incidence, Mortality and Prevalence, 2012.
- American Cancer Society. Cancer Facts and Figures 2014. American Cancer Society, 2014.
- Rahib L, Smith BD, Aizenberg R, Rosenzweig AB, Fleshman JM and Matrisian LM: Projecting cancer incidence and deaths to 2030: The unexpected burden of thyroid, liver, and pancreas cancers in the United States. *Cancer Res* 74: 2913-2921, 2014.
- Hidalgo M: Pancreatic cancer. *N Engl J Med* 362: 1605-1617, 2010.
- Oettle H, Neuhaus P, Hochhaus A, Hartmann JT, Gellert K, Ridwelski K, Niedergethmann M, Zülke C, Fahlke J, Arning MB, *et al*: Adjuvant chemotherapy with gemcitabine and long-term outcomes among patients with resected pancreatic cancer: The CONKO-001 randomized trial. *JAMA* 310: 1473-1481, 2010.
- Kalser MH and Ellenberg SS: Pancreatic cancer. Adjuvant combined radiation and chemotherapy following curative resection. *Arch Surg* 120: 899-903, 1985.
- Oettle H, Post S, Neuhaus P, Gellert K, Langrehr J, Ridwelski K, Schramm H, Fahlke J, Zuelke C, Burkart C, *et al*: Adjuvant chemotherapy with gemcitabine vs observation in patients undergoing curative-intent resection of pancreatic cancer: A randomized controlled trial. *JAMA* 297: 267-277, 2007.
- Uesaka K, Boku N, Fukutomi A, Okamura Y, Konishi M, Matsumoto I, Kaneoka Y, Shimizu Y, Nakamori S, Sakamoto H, *et al*: Adjuvant chemotherapy of S-1 versus gemcitabine for resected pancreatic cancer: A phase 3, open-label, randomised, non-inferiority trial (JASPAC 01). *Lancet* 388: 248-257, 2016.
- Neoptolemos JP, Dunn JA, Stocken DD, Almond J, Link K, Beger H, Bassi C, Falconi M, Pederzoli P, Dervenis C, *et al*: Adjuvant chemoradiotherapy and chemotherapy in resectable pancreatic cancer: A randomised controlled trial. *Lancet* 358: 1576-1585, 2001.
- Kim EJ, Ben-Josef E, Herman JM, Bekaii-Saab T, Dawson LA, Griffith KA, Francis IR, Greenson JK, Simeone DM, Lawrence TS, *et al*: A multi-institutional phase 2 study of neoadjuvant gemcitabine and oxaliplatin with radiation therapy in patients with pancreatic cancer. *Cancer* 119: 2692-2700, 2013.
- Vogelstein B and Kinzler KW: Cancer genes and the pathways they control. *Nat Med* 10: 789-799, 2004.
- Yachida S, Jones S, Bozic I, Antal T, Leary R, Fu B, Kamiyama M, Hruban RH, Eshleman JR, Nowak MA, *et al*: Distant metastasis occurs late during the genetic evolution of pancreatic cancer. *Nature* 467: 1114-1117, 2010.
- Waraya M, Yamashita K, Katagiri H, Ishii K, Takahashi Y, Furuta K and Watanabe M: Preoperative serum CA19-9 and dissected peripancreatic tissue margin as determiners of long-term survival in pancreatic cancer. *Ann Surg Oncol* 16: 1231-1240, 2009.
- Mirkin KA, Hollenbeck CS and Wong J: Prognostic impact of carbohydrate antigen 19-9 level at diagnosis in resected stage I-III pancreatic adenocarcinoma: A U.S. population study. *J Gastrointest Oncol* 8: 778-788, 2017.
- Allema JH, Reinders ME, van Gulik TM, Koelemay MJ, Van Leeuwen DJ, de Wit LT, Gouma DJ and Obertop H: Prognostic factors for survival after pancreaticoduodenectomy for patients with carcinoma of the pancreatic head region. *Cancer* 75: 2069-2076, 1995.
- Wenger FA, Peter F, Zieren J, Steiert A, Jacobi CA and Müller JM: Prognosis factors in carcinoma of the head of the pancreas. *Dig Surg* 17: 29-35, 2000.
- Japan Pancreas Society. Classification of pancreatic carcinoma. Tokyo: Kanahara, 2011.
- Sobin LH and Wittekind C (eds): International Union Against Cancer (UICC): TNM classification of malignant tumors, 6th edition. New York, Wiley and Liss, 2002.
- National Comprehensive Cancer Network. Clinical practice guidelines in oncology. Pancreatic Adenocarcinoma. Version 2, 2016.
- Yamashita K, Tatebayashi T, Shinoda H and Okayasu I: Simplified rapid non-radioactive PCR-SSCP method applied to K-ras mutation analysis. *Pathol Int* 46: 801-804, 1996.
- Yamashita K, Yoshida T, Shinoda H and Okayasu I: Novel method for simultaneous analysis of p53 and K-ras mutations and p53 protein expression in single histologic sections. *Arch Pathol Lab Med* 125: 347-352, 2001.
- Kaplan EL and Meier P: Nonparametric estimation from incomplete observations. *J Am Stat Assoc* 53: 457-481, 1958.
- Piagnerelli R, Marrelli D, Roviello G, Ferrara F, Di Mare G, Voglino C, Petrioli R, Marini M, Macchiarelli R and Roviello F: Clinical value and impact on prognosis of peri-operative CA 19-9 serum levels in stage I and II adenocarcinoma of the pancreas. *Tumour Biol* 37: 1959-1966, 2016.
- Chan A, Prassas I, Dimitromanolakis A, Brand RE, Serra S, Diamandis EP and Blasutig IM: Validation of biomarkers that complement CA19.9 in detecting early pancreatic cancer. *Clin Cancer Res* 20: 5787-5795, 2014.
- Kondo N, Murakami Y, Uemura K, Hayashidani Y, Sudo T, Hashimoto Y, Nakashima A, Sakabe R, Shigemoto N, Kato Y, *et al*: Prognostic impact of perioperative serum CA 19-9 levels in patients with resectable pancreatic cancer. *Ann Surg Oncol* 17: 2321-2329, 2010.
- Harsha HC, Kandasamy K, Ranganathan P, Rani S, Ramabadrans S, Gollapudi S, Balakrishnan L, Dwivedi SB, Telikicherla D, Selvan LD, *et al*: A compendium of potential biomarkers of pancreatic cancer. *PLoS Med* 6: e1000046, 2009.
- Berger AC, Garcia M Jr, Hoffman JP, Regine WF, Abrams RA, Safran H, Konski A, Benson AB III, MacDonald J and Willett CG: Postresection CA 19-9 predicts overall survival in patients with pancreatic cancer treated with adjuvant chemoradiation: A prospective validation by RTOG 9704. *J Clin Oncol* 26: 5918-5922, 2008.
- Hess V, Glimelius B, Grawe P, Dietrich D, Bodoky G, Ruhstaller T, Bajetta E, Saletti P, Figer A, Scheithauer W and Herrmann R: CA 19-9 tumour-marker response to chemotherapy in patients with advanced pancreatic cancer enrolled in a randomised controlled trial. *Lancet Oncol* 9: 132-138, 2008.
- Ohigashi H, Ishikawa O, Sasaki Y, Yamada T, Furukawa H, Imaoka S, Kasugai T, Ishiguro S, Ueda K, Miyoshi Y and Nakamura Y: K-ras point mutation in the nerve plexuses around the superior mesenteric artery in resectable adenocarcinoma of the pancreatic head: Distribution pattern and related factors. *Arch Surg* 135: 1450-1455, 2000.
- Kim J, Reber HA, Dry SM, Elashoff D, Chen SL, Umetani N, Kitago M, Hines OJ, Kazanjian KK, Hiramatsu S, *et al*: Unfavourable prognosis associated with K-ras gene mutation in pancreatic cancer surgical margins. *Gut* 55: 1598-1605, 2006.

31. Ijichi H, Chytil A, Gorska AE, Aakre ME, Fujitani Y, Fujitani S, Wright CV and Moses HL: Aggressive pancreatic ductal adenocarcinoma in mice caused by pancreas-specific blockade of transforming growth factor-beta signaling in cooperation with active Kras expression. *Genes Dev* 20: 3147-3160, 2006.
32. Jones S, Zhang X, Parsons DW, Lin JC, Leary RJ, Angenendt P, Mankoo P, Carter H, Kamiyama H, Jimeno A, *et al*: Core signaling pathways in human pancreatic cancers revealed by global genomic analyses. *Science* 321: 1801-1806, 2008.
33. Biankin AV, Waddell N, Kassahn KS, Gingras MC, Muthuswamy LB, Johns AL, Miller DK, Wilson PJ, Patch AM, Wu J, *et al*: Pancreatic cancer genomes reveal aberrations in axon guidance pathway genes. *Nature* 491: 399-405, 2012.
34. Tao LY, Zhang LF, Xiu DR, Yuan CH, Ma ZL and Jiang B: Prognostic significance of K-ras mutations in pancreatic cancer: A meta-analysis. *World J Surg Oncol* 14: 146, 2016.
35. Knijn N, Mekenkamp LJ, Klomp M, Vink-Börger ME, Tol J, Teerenstra S, Meijer JW, Tebar M, Riemersma S, van Krieken JH, *et al*: KRAS mutation analysis: A comparison between primary tumours and matched liver metastases in 305 colorectal cancer patients. *Br J Cancer* 104: 1020-1026, 2011.
36. Collins MA, Bednar F, Zhang Y, Brisset JC, Galbán S, Galbán CJ, Rakshit S, Flannagan KS, Adsay NV and Pasca di Magliano M: Oncogenic Kras is required for both the initiation and maintenance of pancreatic cancer in mice. *J Clin Invest* 122: 639-653, 2012.
37. Onozato W, Yamashita K, Yamashita K, Kuba T, Katoh H, Nakamura T, Sato T, Ihara A, Okayasu I and Watanabe M: Genetic alterations of K-ras may reflect prognosis in stage III colon cancer patients below 60 years of age. *J Surg Oncol* 103: 25-33, 2011.
38. Yamashita K, Kuba T, Shinoda H, Takahashi E and Okayasu I: Detection of K-ras point mutations in the supernatants of peritoneal and pleural effusions for diagnosis complementary to cytologic examination. *Am J Clin Pathol* 109: 704-711, 1998.
39. Yamashita K, Kida Y, Shinoda H, Kida M and Okayasu I: K-ras point mutations in the supernatants of pancreatic juice and bile are reliable for diagnosis of pancreas and biliary tract carcinomas complementary to cytologic examination. *Jpn J Cancer Res* 90: 240-248, 1999.
40. Kawamata H, Yamashita K, Kojo K, Ushiku H, Ooki A and Watanabe M: Discrepancies between the K-ras mutational status of primary colorectal cancers and corresponding liver metastases are found in codon 13. *Genomics* 106: 71-75, 2015.



This work is licensed under a Creative Commons Attribution-NonCommercial-NoDerivatives 4.0 International (CC BY-NC-ND 4.0) License.