



Helicobacter pylori Biofilm Involves a Multigene Stress-Biased Response, Including a Structural Role for Flagella

 Skander Hathroubi,^a  Julia Zerebinski,^a  Karen M. Ottemann^a

^aDepartment of Microbiology and Environmental Toxicology, University of California, Santa Cruz, California, USA

ABSTRACT *Helicobacter pylori* has an impressive ability to persist chronically in the human stomach. Similar characteristics are associated with biofilm formation in other bacteria. The *H. pylori* biofilm process, however, is poorly understood. To gain insight into this mode of growth, we carried out comparative transcriptomic analysis between *H. pylori* biofilm and planktonic cells, using the mouse-colonizing strain SS1. Optimal biofilm formation was obtained with a low concentration of serum and 3 days of growth, conditions that caused both biofilm and planktonic cells to be ~80% coccoid. Transcriptome sequencing (RNA-seq) analysis found that 8.18% of genes were differentially expressed between biofilm and planktonic cell transcriptomes. Biofilm-downregulated genes included those involved in metabolism and translation, suggesting these cells have low metabolic activity. Biofilm-upregulated genes included those whose products were predicted to be at the cell envelope, involved in regulating a stress response, and surprisingly, genes related to formation of the flagellar apparatus. Scanning electron microscopy visualized flagella that appeared to be a component of the biofilm matrix, supported by the observation that an aflagellated mutant displayed a less robust biofilm with no apparent filaments. We observed flagella in the biofilm matrix of additional *H. pylori* strains, supporting that flagellar use is widespread. Our data thus support a model in which *H. pylori* biofilm involves a multigene stress-biased response and that flagella play an important role in *H. pylori* biofilm formation.

IMPORTANCE Biofilms, communities of bacteria that are embedded in a hydrated matrix of extracellular polymeric substances, pose a substantial health risk and are key contributors to many chronic and recurrent infections. Chronicity and recalcitrant infections are also common features associated with the ulcer-causing human pathogen *H. pylori*. However, relatively little is known about the role of biofilms in *H. pylori* pathogenesis, as well as the biofilm structure itself and the genes associated with this mode of growth. In the present study, we found that *H. pylori* biofilm cells highly expressed genes related to cell envelope and stress response, as well as those encoding the flagellar apparatus. Flagellar filaments were seen in high abundance in the biofilm. Flagella are known to play a role in initial biofilm formation, but typically are downregulated after that state. *H. pylori* instead appears to have coopted these structures for nonmotility roles, including a role building a robust biofilm.

KEYWORDS *Helicobacter pylori*, biofilm, flagella, stress, metabolism, RNA-seq, transcriptome, stress response, transcriptomics

Helicobacter pylori has been coevolving with humans for tens of thousands of years (1). During this time, it has adapted to survive the hostile environment of the stomach and evade the immune system, allowing it to persist for the life of the host (2). *H. pylori* colonizes gastric epithelial surfaces and within the thin layer of mucus near the cells (3). More recently, *H. pylori* was found to colonize within gastric glands, repeated

Received 6 September 2018 Accepted 19 September 2018 Published 30 October 2018

Citation Hathroubi S, Zerebinski J, Ottemann KM. 2018. *Helicobacter pylori* biofilm involves a multigene stress-biased response, including a structural role for flagella. *mBio* 9:e01973-18. <https://doi.org/10.1128/mBio.01973-18>.

Editor Nancy E. Freitag, University of Illinois at Chicago

Copyright © 2018 Hathroubi et al. This is an open-access article distributed under the terms of the [Creative Commons Attribution 4.0 International license](https://creativecommons.org/licenses/by/4.0/).

Address correspondence to Skander Hathroubi, shathrou@ucsc.edu.

This article is a direct contribution from a Fellow of the American Academy of Microbiology. Solicited external reviewers: Regine Hengge, Humboldt-Universität zu Berlin; Timothy Cover, Vanderbilt University.

invaginations of the gastrointestinal tract, which may provide the bacteria a favorable niche (4, 5). Even though most infections are asymptomatic, *H. pylori* persistence is considered a major risk factor for gastric and duodenal ulcers, gastric mucosa-associated lymphoid tissue (MALT) lymphoma, and gastric adenocarcinoma (6). *H. pylori* infections remain difficult to treat, and when left untreated (7), 1% to 2% progress to gastric cancer (8, 9).

H. pylori possesses several mechanisms to escape the challenging environment of the stomach, where the pH is around 2. These include urease production, flagellar motility, and chemotaxis, which are all required for the initial and sustained colonization of the gastric epithelial surface (10). Urease catalyzes the hydrolysis of urea, which is abundant in the stomach, into bicarbonate and ammonia and thus raises the pH to near neutral (10). pH elevation decreases the viscoelastic properties of mucus gel and improves the motility of *H. pylori*, which can then swim away from the lumen to reach safer niches, including those close to the gastric epithelial surface (11). *H. pylori* forms microcolonies at the cell surface *in vitro* (12, 13) as well as within gastric glands (5). This microcolony mode of growth may be consistent with the bacteria being in a biofilm growth mode.

Biofilms are dense aggregates of microorganisms attached to a surface and embedded in an extracellular polymeric matrix (14). In contrast with the other mode of bacterial growth, free-floating or planktonic, biofilm cells tend to be more tolerant toward antimicrobials and host immune responses (14, 15). Biofilms are also frequently associated with chronic disease, including pneumonia in cystic fibrosis patients, Lyme disease, and chronic otitis media (16–18). In those chronic diseases, biofilm growth is considered to be a survival strategy used by pathogens to escape antimicrobial therapies, to avoid clearance by the immune system, and to persist for the lifetime of the host.

Chronicity and recalcitrant infections are also common features associated with *H. pylori* (19). Yet, the role of biofilm growth in promoting *H. pylori* persistence is still not clear (20). The first suggestion of biofilm formation by *H. pylori* during colonization of the human gastric mucosa was found using biopsies and scanning electron microscopy (SEM) analysis (20–22). These studies demonstrated that gastric biopsy samples from *H. pylori*-positive patients showed dense layers of bacteria aggregated and attached to the mucosal surface. The bacteria were consistent in appearance with *H. pylori*, with cells in both the spiral and coccoid morphologies. The same bacterial-appearing structures were absent in *H. pylori*-negative patients; however, there has not yet been conclusive evidence showing that *H. pylori* forms a biofilm *in vivo*.

H. pylori has been well documented to form a biofilm *in vitro*. The first report of *in vitro* biofilm formation by *H. pylori* was described to occur in clinical, laboratory, and mouse-adapted strains and was observed at the air-liquid interface on glass coverslips when the bacteria were grown in brucella broth (BB) supplemented with slightly lower than normal fetal bovine serum (FBS) (23). The biofilms were mainly composed of coccoid bacteria, with a minority of spiral and rod-shaped cells (23). In subsequent reports, scientists analyzed the extracellular polymeric substance (EPS) of *H. pylori* biofilms and found proteomannans, lipopolysaccharide (LPS)-related structures, extracellular DNA (eDNA), proteins, and outer membrane vesicles (24, 25).

Additionally, biofilm cells have been shown to exhibit high resistance *in vitro* to clarithromycin, which is one of the common antibiotics used to treat *H. pylori* infection (26). The MIC and the minimum bactericidal concentration (MBC) were increased by 16- and 4-fold, respectively, in the biofilm cells compared to planktonic ones (26). However, despite the growing evidences of *H. pylori* biofilm formation both *in vitro* and *in vivo* (20–22, 24), little is known about the genes involved in biofilm formation. We thus sought to characterize *H. pylori* biofilm and investigate global transcriptional changes during biofilm formation, with a particular focus on *H. pylori* strain SS1 because it is able to colonize mice and thus will be able to serve as a model for biofilm formation *in vivo*.

TABLE 1 Strains used in this study

<i>H. pylori</i> strain	Knockout strain no.	Description/genotype	Reference or source
SS1			
WT		Wild-type strain	62; J. O'Rourke
$\Delta fliM$ mutant	KO1064	$\Delta fliM::cat$	This study (allele published in reference 41)
$\Delta motB$ mutant	KO536	$\Delta motB2$	65
G27			
WT		Wild-type strain	66; N. Salama, Fred Hutchison Cancer Research Center, Seattle, WA
<i>motB</i> mutant	KO493	<i>motB::aphA3</i>	This study
<i>flgS</i> mutant	KO688	<i>flgS::Tncat</i>	67
<i>fliA</i> mutant	KO689	<i>fliA::Tncat</i>	67

RESULTS

Biofilm formation and growth condition. *H. pylori* strain SS1 has been extensively used as a murine model of *H. pylori* infection. *H. pylori* SS1 biofilms, however, are difficult to detect when the bacteria are grown in the standard nutrient-rich media routinely used for *H. pylori* culture. A previous study reported that *H. pylori* biofilm formation was significantly dependent on the growth media used (27). We thus, evaluated the ability of the *H. pylori* SS1 strain to form a biofilm using the crystal violet biofilm assay, as well as bacteria grown under various growth conditions that included different growth media, incubation times, and concentrations of serum. *H. pylori* SS1 and the other *H. pylori* strains used in this study are listed in Table 1.

Using brucella broth (BB) medium supplemented with 10% FBS (BB10), the condition usually used for *H. pylori* liquid growth, no biofilm was detected. We therefore explored smaller amounts of serum, as these have been reported elsewhere to promote adhesion of *H. pylori* strain 26695 (28) and biofilm formation of *H. pylori* reference strain ATCC 43629 and *H. pylori* clinical strains 9/10 (27). While only a slight biofilm was observed when *H. pylori* SS1 strain was grown with BB supplemented with 6% FBS, a pronounced biofilm ($P < 0.01$) was detected in BB supplemented with 2% FBS (BB2) (Fig. 1A). The *H. pylori* growth rate was slightly reduced in BB2 compared with BB10, which suggests that the increase of biofilm formation was not due to increased growth (data not shown). Ham's F-12 similarly only supported biofilm formation with low percentages of FBS (Fig. 1B). Further experiments identified that 3 days of growth in BB2 led to the greatest amount of biofilm (Fig. 1C). These results thus, suggest that BB medium supplemented with 2% serum and growth for 3 days is an optimal condition for studying *H. pylori* SS1 biofilm formation.

Biofilm characterization. To confirm and extend the results obtained with the crystal violet biofilm assay, biofilms of *H. pylori* SS1 were visualized by confocal laser scanning microscopy (CLSM) and staining with FilmTracer FM 1–43, a dye that fluoresces once inserted into the cell membrane. After 3 days of growth in BB2, we observed a thick bacterial biomass that nonhomogeneously covered the surface, consistent with a well-developed biofilm (Fig. 2). Using z-stack images, the thickness of the *H. pylori* SS1 biofilm was determined to be $11.64 \pm 2.63 \mu\text{m}^3/\mu\text{m}$ (see Movie S1 in the supplemental material). As expected, *H. pylori* SS1 grown in BB10 did not form a biofilm that could be visualized by CLSM (data not shown).

To further characterize the EPS that composed the SS1 biofilm matrix, BOBO-3 and FilmTracer SYPRO Ruby biofilm matrix stains were used to stain extracellular DNA (eDNA) and extracellular proteins, respectively, as described previously (29, 30). Both of these molecules extensively stained the biofilm EPS, consistent with the idea that the *H. pylori* SS1 biofilm matrix contains significant amounts of eDNA and extracellular proteins (Fig. 2B and C). Because the same molecules have been detected in other *H. pylori* strains, these results suggest that the *H. pylori* EPS is typically composed of eDNA and proteins (24, 31).

We also performed live-dead staining with the FilmTracer LIVE/DEAD biofilm viability kit, to define whether the biofilm cells were alive or dead. This approach revealed a

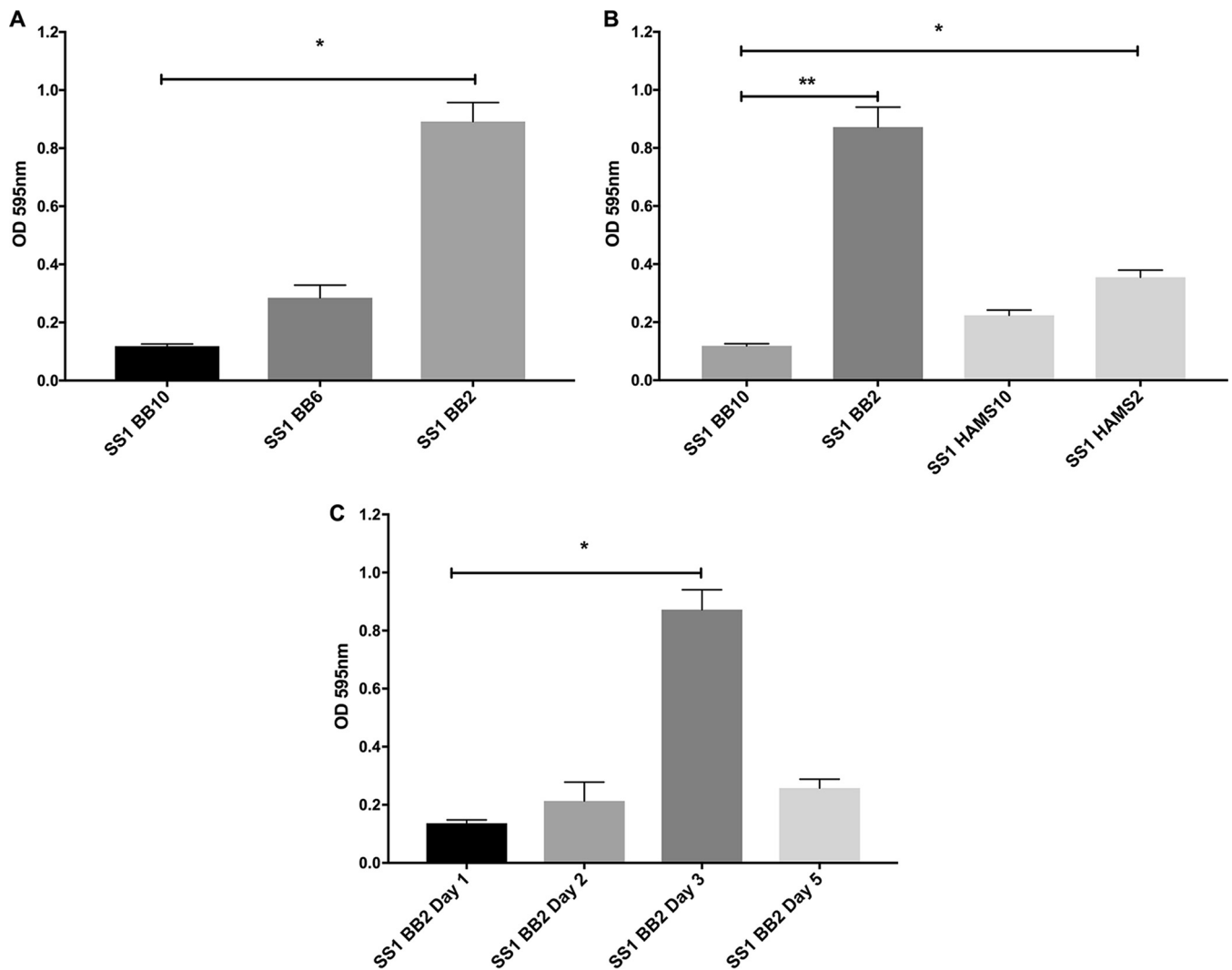


FIG 1 *H. pylori* SS1 forms robust biofilms after 3 days of growth in BB2. *H. pylori* strain SS1 was grown in the indicated media, and biofilm formation was assessed by crystal violet absorbance at 595 nm. (A) *H. pylori* SS1 was grown for 3 days in BB media supplemented with different concentrations of FBS (BB10, 10%; BB6, 6%; and BB2, 2%). (B) *H. pylori* SS1 was grown for 3 days in BB media or Ham's F-12 supplemented with 10% (HAMS10) or 2% (HAMS2) FBS. (C) *H. pylori* SS1 was grown in BB medium supplemented with 2% FBS, and biofilm formation was evaluated at different time points. Experiments were performed three independent times with at least 6 technical replicates for each. Statistical analysis was performed using ANOVA (*, $P < 0.05$; and **, $P < 0.01$).

subpopulation of dead or damaged cells, stained red, that appear to be homogeneously distributed within the live biofilm cells, which stained green (Fig. 2D to F). This result suggests that the *H. pylori* biofilm contains both live and dead cells.

To determine the importance of extracellular proteins and eDNA in the biofilm matrix of *H. pylori* SS1, we employed enzymatic treatment using DNase I and proteinase K. Proteinase K treatment significantly dispersed preformed biofilms ($P < 0.01$) (Fig. 3). *H. pylori* preformed biofilms were, however, resistant to DNase treatments. These data suggest that DNA may play only a minor role in the biofilm matrix; however, extracellular proteins likely play an important role in the biofilm architecture of *H. pylori*, as has been reported in other *H. pylori* strains (24, 31). These results suggest that many *H. pylori* strains, including SS1, use a protein-based biofilm matrix.

Transcriptomic profiling of biofilm versus planktonic cells. To gain insight into the genes involved in *H. pylori* biofilm growth, we performed a transcript profiling experiment using transcriptome sequencing (RNA-seq). For this experiment, we grew *H. pylori* SS1 in BB2 in six-well plates for 3 days and collected the free-floating planktonic cells and the bottom-attached biofilm ones from the same wells. We collected RNA

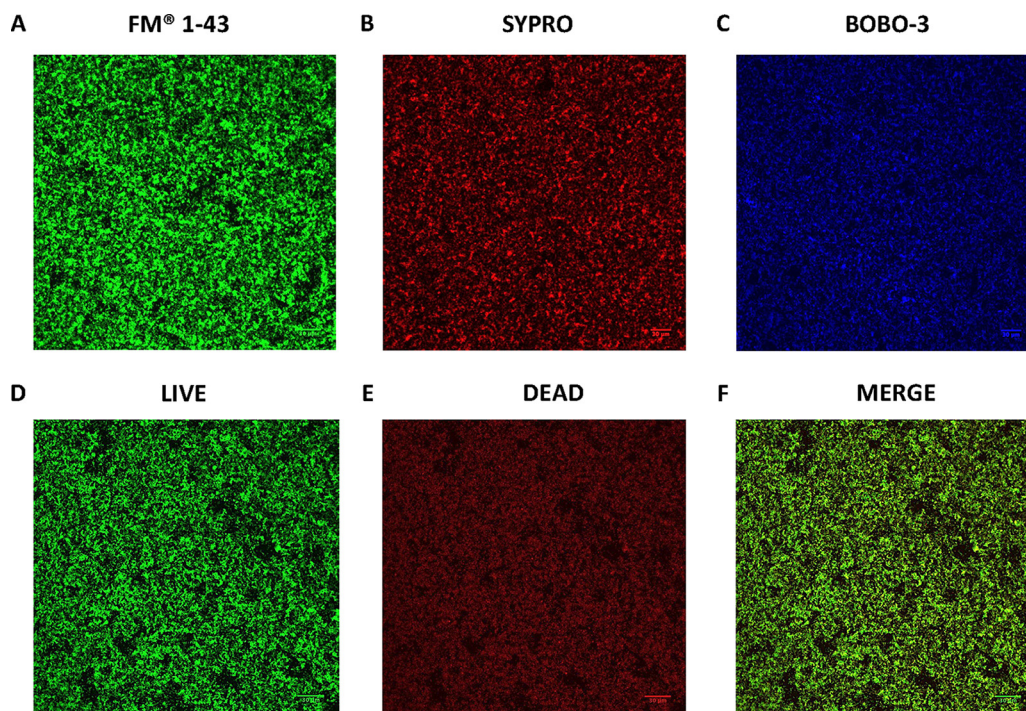


FIG 2 Confocal scanning laser microscopy (CSLM) images of *H. pylori* SS1 biofilm. Shown are representative CSLM images of 3-day-old SS1 biofilms grown in BB2 and stained with (A) FM 1–43 to stain total bacterial cells, (B) SYPRO RUBY to stain extracellular proteins, (C) BOBO-3 to stain extracellular DNA, and (D to F) live-dead staining with live cells represented by the green fluorescent SYTO 9 and dead/damaged cells represented by the red fluorescent propidium. Scale bar = 30 μ m.

from three biological replicates grown on 2 separate days. A total of 10 to 20 million reads per sample were generated by RNA-seq. These reads were then mapped to the *H. pylori* SS1 complete reference genome (32) and revealed a clear clustering of the biofilm-grown cells in a distinct population compared to the planktonic ones (Fig. 4A). This transcriptomic analysis showed that 122 of 1,491 genes (8.18%) were significantly differentially expressed ($P < 0.01$ and \log_2 fold change of > 1 or < -1) between *H. pylori* biofilm and planktonic populations (Fig. 4B and Fig. 5). Sixty-one genes were significantly upregulated in biofilm cells compared to their planktonic counterparts, while another 61 were significantly upregulated in planktonic cells (Table 2 and Table 3). To validate the results obtained by this RNA-seq, the relative abundance of selected RNA transcripts was quantified by quantitative reverse transcription-PCR (qRT-PCR). Using this approach, we detected the same gene expression trend between qRT-PCR and RNA-seq, thus, validating our results (Fig. 6). Below we discuss the most prominent of these genes and what they suggest about the *H. pylori* biofilm growth state.

Our data suggest that biofilm cells may be less metabolically active than planktonic cells, based on the decreased expression of several genes involved in translation and ribosomal structure (Fig. 5 and Table 3). Similarly, genes involved in metabolism, biosynthesis of cofactors, and urease were also downregulated (Fig. 5 and Table 3).

We found evidence that biofilm cells experience a stressful environment. Indeed, genes coding for several stress response-related proteins, such as *hrcA*, *hspR*, *crdR*, *recR*, and *pgdA*, were upregulated in biofilm cells (Table 2). The *hspR* and *hrcA* genes code for transcriptional repressor proteins belonging to the heat shock protein family, and both were upregulated in biofilm cells. The *crdR* gene, which encodes a copper-related transcriptional response regulator, was also upregulated in *H. pylori* biofilm cells. Several transcripts encoding oxidative stress resistance were similarly upregulated in biofilm cells. These included *recR*, a gene encoding a DNA recombination protein, as well as *pgdA*, which encodes a peptidoglycan deacetylase. These have both been previously associated with oxidative stress in *H. pylori* (33).

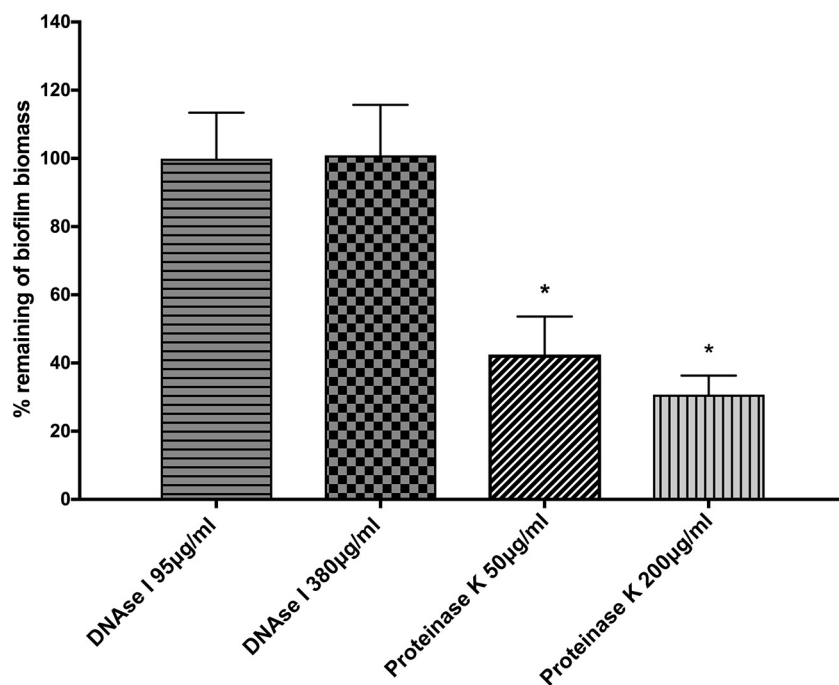


FIG 3 Effect of enzymatic treatments on preformed biofilms. *H. pylori* SS1 was allowed to form biofilms for 3 days in BB2. The medium was then removed and replaced with either fresh medium or medium containing DNase I or proteinase K. Cells were reincubated for 24 h and then analyzed for the remaining biofilm using the crystal violet assay. The data shown here represent the percentage of remaining biofilm compared to the untreated control. Experiments were performed three times independently with at least 8 technical replicates for each. Statistical analysis was performed using ANOVA (*, $P < 0.01$ compared to the untreated control).

We found that the ATP-dependent protease *hsIV* gene was among the most downregulated genes in *H. pylori* biofilm (Table 3). Although the HSIV protein has not yet been studied in the context of *H. pylori* biofilms, the orthologous *Escherichia coli* HsIV protease has been previously associated with biofilm dispersal (34).

Our data suggest that biofilm cells may be less virulent in some ways, but more in others. Transcripts coding for some *H. pylori* virulence, colonization, or immunogenic factors were low in biofilm cells, including the UreA subunit of urease, the GroEL chaperone, and the HcpC cysteine-rich protein. These have each been shown to play roles in colonization or promoting inflammatory gene expression (35–37). On the other hand, only three genes carried within the cytotoxin-associated gene pathogenicity island (*cagPAI*) (38, 39), *cagL*, *cagW*, and *cagE*, were significantly highly expressed in biofilm cells of *H. pylori*. These genes are in separate operons (38) and encode *cagPAI* protein CagL/Cag18, an integrin binding protein at the Cag pilus tip, *cagPAI* protein CagW/Cag10, and type IV secretion system protein CagE/VirB4, both part of the inner membrane protein transfer complex (39).

Many genes related to the cell envelope were upregulated in biofilm cells (Fig. 5). Indeed, genes coding for proteins involved in lipopolysaccharide synthesis, such as *lpxB*, which encodes a lipid A disaccharide synthase, and *lptB*, which encodes a lipopolysaccharide export system ATPase, were upregulated in biofilm cells (Table 2). Numerous transcripts encoding cytoplasmic and outer membrane proteins were also elevated in biofilm cells (i.e., *homC*, *homD*, and HPYLSS1_00450) (Table 2).

Interestingly, the majority of the upregulated cell envelope genes in biofilm cells encoded flagellar structure and biosynthesis proteins, such as *flgL*, *flgK*, *fliD*, and *flgE*, which encode flagellar hook-associated proteins (Table 2). Two known or putative flagellin genes, *flaB* and *flaG*, were also upregulated in the biofilms (Table 2). These data suggested the intriguing idea that flagella might play a role in *H. pylori* biofilm.

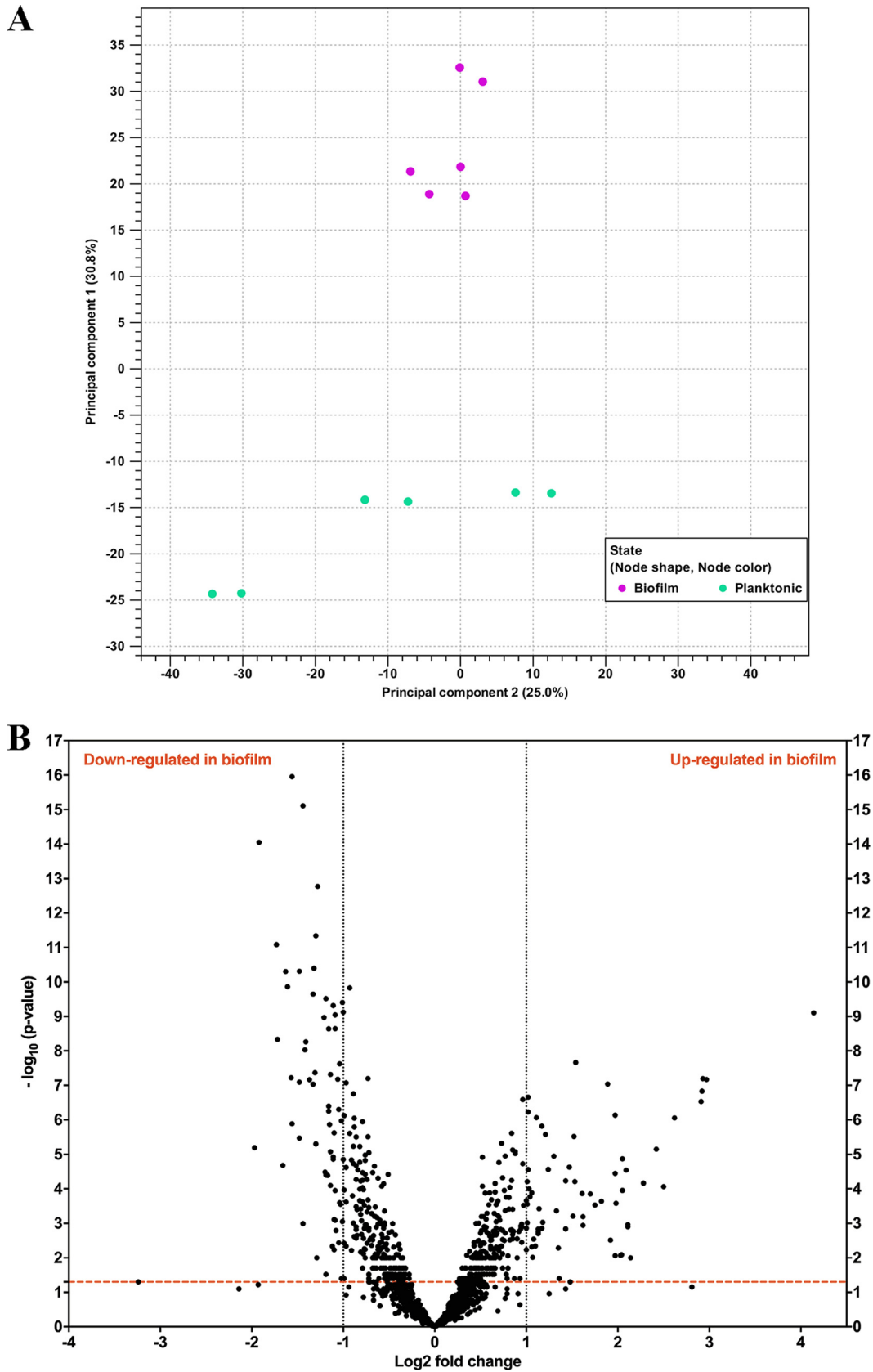


FIG 4 Biofilm-grown cells and planktonic cells show distinct transcriptional profiles. (A) Principal-component analysis (PCA) of gene expression obtained by RNA-seq between biofilm ($n = 3$) and planktonic ($n = 3$) populations. (B) Volcano plot of gene expression data. The y axis is the negative \log_{10} of P values (a higher value indicates greater significance), and the x axis is the

(Continued on next page)

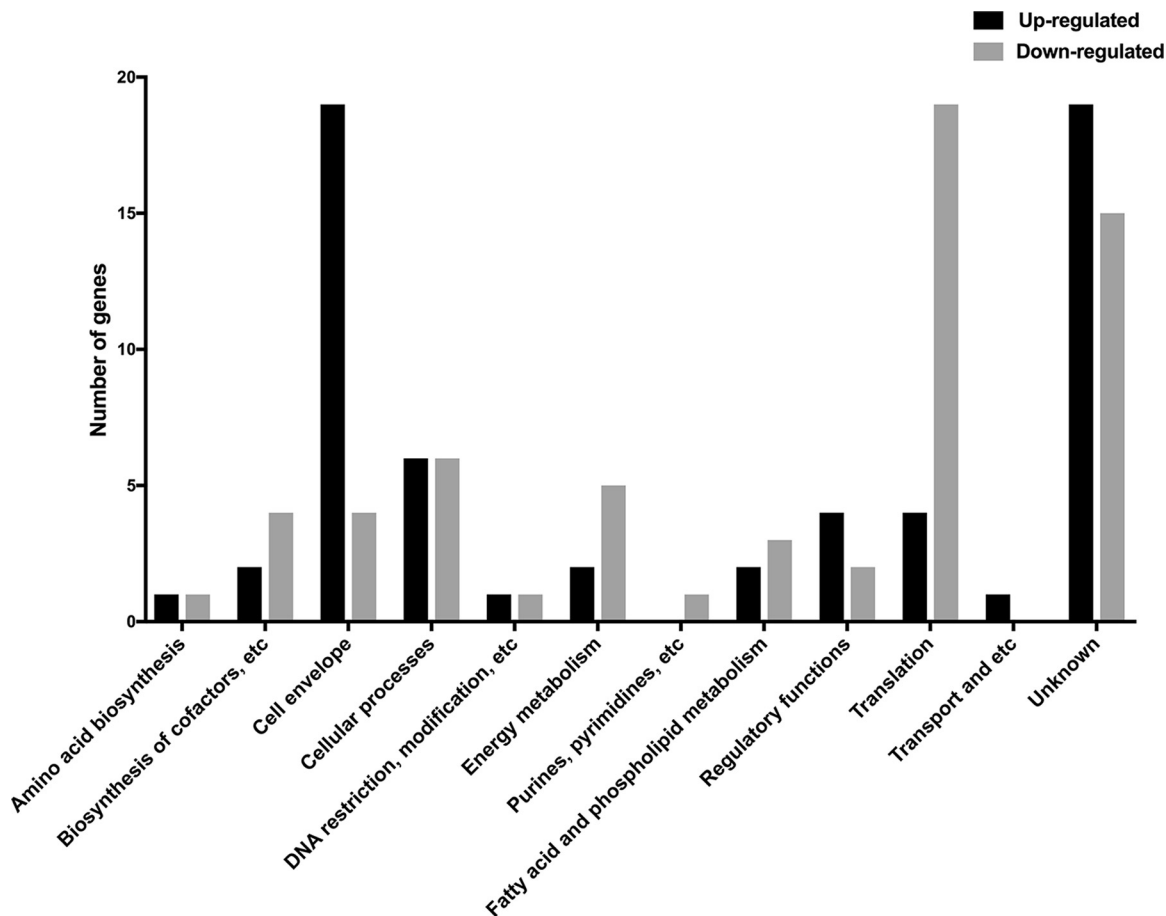


FIG 5 Functional classification of genes differentially expressed in *H. pylori* SS1 biofilm. Black and gray bars represent upregulated and downregulated genes, respectively, that were significantly differentially expressed ($P < 0.01$ and \log_2 fold change of >1 or <-1) between *H. pylori* biofilm and planktonic populations.

Flagella are present and play a structural role in *H. pylori* biofilms. The transcriptomic data above suggested that flagellar components are upregulated in the biofilm cells, so we used SEM to gain insights into the biofilm architecture of *H. pylori*. This analysis demonstrated three-dimensional structures composed of bacterial cells adherent to one another and to the surface (Fig. 7A). Biofilms contained mainly coccoid cells along with some rod-shaped cells (Fig. 7A), as described previously for *H. pylori* biofilms (20–23). Compared to planktonic populations, the proportions of both morphologies were similar at ~80% coccoid cells (data not shown).

Interestingly, extensive networks of bundles of filaments were visible in the biofilms. In some cases, these appeared to be connected to the bacterial pole, as would be expected for flagella (Fig. 7A, arrowheads). We measured the dimensions of the filaments to see if they were consistent in size with flagella. The width and the length measured 20 to 30 nm and 3 to 4 μm , respectively, and were in agreement with those reported previously for *H. pylori* flagella (40). These data, especially when combined with transcriptomics, suggested these structures could be flagella. We therefore analyzed a mutant strain that lacks a key component of the flagellar basal body, FliM, and is aflagellated (41). SEM analysis of the ΔfliM mutant showed a complete loss of flagella

FIG 4 Legend (Continued)

\log_2 fold change in difference in abundance between two population (positive values represent the upregulated genes in biofilm, and negative values represent downregulated genes). The dashed red line shows where $P = 0.01$, with points above the line having a P value of <0.01 and points below the line having a P value of >0.01 .

TABLE 2 Upregulated genes in *H. pylori* SS1 biofilm using RNA-seq analysis, grouped by functional role categories^a

Locus	Putative identification	Fold change ^b
Cell envelope		
<i>flgL</i> (HPYLSS1_00284)	Flagellar hook-associated protein 3	7.64
<i>flgK</i> (HPYLSS1_01062)	Flagellar hook-associated protein 1	6.16
<i>flgM</i> (HPYLSS1_01066)	Anti-sigma 28 factor	3.94
<i>flaG</i> (HPYLSS1_00586)	Polar flagellin G	3.93
<i>flaB</i> (HPYLSS1_00110)	Flagellin B	3.52
<i>flgE1</i> (HPYLSS1_00464)	Flagellar hook protein 1	3.07
<i>flgB</i> (HPYLSS1_01503)	Flagellar basal body rod protein	2.37
<i>fliL</i> (HPYLSS1_00526)	Flagellar protein of unknown function	2.25
<i>fliK</i> (HPYLSS1_00653)	Flagellar hook-length control protein	2.14
<i>fliD</i> (HPYLSS1_00585)	Flagellar hook-associated protein 2	2
<i>lpxB</i> (HPYLSS1_00467)	Lipid A-disaccharide synthase	3.06
<i>lptB</i> (HPYLSS1_00622)	Lipopolysaccharide export system ATP-binding	2.54
<i>mltD</i> (HPYLSS1_01517)	Membrane-bound lytic murein transglycosylase D precursor	2
<i>pgdA</i> (HPYLSS1_00299)	Peptidoglycan deacetylase	2.1
HPYLSS1_00450	Membrane protein	3.78
HPYLSS1_01378	Outer membrane protein <i>homD</i>	3.26
HPYLSS1_01113	Putative outer membrane protein	2.91
HPYLSS1_01021	Outer membrane protein <i>homC</i>	2.69
HPYLSS1_01469	Putative outer membrane protein	2.52
Cellular processes		
<i>cagE</i> (HPYLSS1_00705)	Type IV secretion system protein VirB4/DNA transfer	2.46
<i>cagW</i> (HPYLSS1_00718)	<i>cag</i> pathogenicity island protein CagW (<i>cag10</i>)	2.31
<i>cagL</i> (HPYLSS1_00710)	<i>cag</i> pathogenicity island protein CagL (<i>cag18</i>)	2.02
<i>recR</i> (HPYLSS1_00636)	Recombination protein RecR	3.7
HPYLSS1_00410	DNA polymerase I	2.08
HPYLSS1_01332	CMP- <i>N</i> -acetylneuraminate- β -galactosamide	2.2
Regulatory functions		
<i>hrcA</i> (HPYLSS1_00106)	Heat-inducible transcription repressor HrcA	4.84
<i>hspR</i> (HPYLSS1_00407)	Putative heat shock protein HspR	2.09
<i>crdR</i> (HPYLSS1_01312)	Two-component response regulator CrdR	2.03
<i>rsfS</i> (HPYLSS1_01340)	Ribosomal silencing factor S	2.16
Translation		
<i>ansA</i> (HPYLSS1_00615)	Putative L-asparaginase	2.11
<i>cbpA</i> (HPYLSS1_00408)	Curved DNA-binding protein	2.19
HPYLSS1_00252	Chaperone protein ClpB	2.7
HPYLSS1_01332	CMP- <i>N</i> -acetylneuraminate- β -galactosamide	2.2
Amino acid biosynthesis		
<i>porC</i> (HPYLSS1_01050)	Pyruvate synthase subunit PorC	2.02
Fatty acid and phospholipid metabolism		
<i>acpS</i> (HPYLSS1_00527)	Holo-[acyl-carrier-protein] synthase	2.89
<i>fenF</i> (HPYLSS1_00085)	Malonyl CoA-acyl carrier protein transacylase	2.26
Biosynthesis of cofactors, prosthetic groups, and carriers		
<i>thiE</i> (HPYLSS1_00492)	Thiamine-phosphate synthase	4.13
<i>sall</i> (HPYLSS1_00914)	Adenosyl-chloride synthase	2.87
DNA restriction, modification, recombination, and repair		
HPYLSS1_00696	Restriction endonuclease	2.19
Transport and binding proteins		
<i>metI</i> (HPYLSS1_01522)	D-Methionine transport system permease protein	2.18
HPYLSS1_00805	Putative ABC transporter ATP-binding protein	2.02
Energy metabolism		
<i>ansA</i> (HPYLSS1_00615)	Putative L-asparaginase	2.11
HPYLSS1_00772	Pyroloquinoline quinone biosynthesis protein	7.5
Hypothetical proteins		
HPYLSS1_00605	Hypothetical protein/putative GTPase dynamin	17.63
HPYLSS1_00355	Hypothetical protein	7.82

(Continued on next page)

TABLE 2 (Continued)

Locus	Putative identification	Fold change ^b
HPYLSS1_01063	Hypothetical protein	7.58
HPYLSS1_00488	Hypothetical protein	5.65
HPYLSS1_01091	Hypothetical protein	5.34
HPYLSS1_00197	Hypothetical protein	4.4
HPYLSS1_00109	Hypothetical protein	4.25
HPYLSS1_00933	Hypothetical protein	3.91
HPYLSS1_01183	Hypothetical protein	3.37
HPYLSS1_00583	Hypothetical protein	3.07
HPYLSS1_00404	Hypothetical protein	2.85
HPYLSS1_01474	Hypothetical protein	2.77
HPYLSS1_00984	Hypothetical protein	2.56
HPYLSS1_01009	Hypothetical protein	2.26
HPYLSS1_01271	Hypothetical protein	2.05
HPYLSS1_00558	Hypothetical protein	2.04
HPYLSS1_01019	Hypothetical protein	2.03
HPYLSS1_00777	Hypothetical protein	2.01
HPYLSS1_00529	Hypothetical protein	2

^aUpregulation was determined as a cutoff ratio of ≥ 1 log₂ fold change and *P* value of < 0.05 .

^bFold change represents the difference in gene expression between biofilm (*n* = 3) and planktonic (*n* = 3) populations.

(Fig. 7A). This mutant displayed significantly less biofilm biomass (Fig. 7B), but we were able to find few microcolonies. Within these microcolonies, the filaments were completely lacking (Fig. 7A). These results suggest that these filaments are flagella and, furthermore, that flagella and/or motility is important for biofilm formation.

To further dissect the roles of motility and flagella in biofilm formation, we analyzed biofilm formation in a nonmotile but flagellated strain created by disruption of the motor protein *MotB*. As reported previously, this mutant still expresses flagella (Fig. 7A). Biofilm formation, however, was severely impaired compared to that in the wild-type strain, which suggests that a lack of motility might contribute to the biofilm defect. However, the Δ *motB* mutant produced significantly more biofilm than the Δ *fliM* mutant, suggesting that the flagellar structure even in the absence of motility also contributes to biofilm formation in *H. pylori*.

To examine whether other strains of *H. pylori* similarly use flagella in biofilms, we imaged the biofilm of *H. pylori* strain G27 and similar flagellar mutants to those used above. Wild-type *H. pylori* G27 biofilm cells also contained filaments consistent with flagella (Fig. 8A). As with strain SS1, mutants lacking flagella (*flgS* or *fliA*) formed very weak biofilms, while strains that had flagella but no motility (*motB*) retained partial biofilm formation (Fig. 8B).

Taken together, these data suggest that flagella are produced by *H. pylori* when in a biofilm and appear to play roles in addition to simple motility, promoting biofilm integrity by holding cells together and to the surface.

DISCUSSION

In this report, we present the first transcriptomic characterization of the *H. pylori* biofilm. This study demonstrated clearly distinct expression profiles between planktonic and biofilm cells. The biofilm cells were characterized by low metabolic activity and triggering of several stress responses. Among the upregulated genes in the biofilm cells, we found several genes associated with cell membrane proteins, outer membrane proteins, and stress response, as well as, surprisingly, genes related to the flagellar apparatus. SEM analysis confirmed that flagella are present in a mature *H. pylori* biofilm and appear to play a role in maintaining solid biofilm structures. This result was somewhat surprising, as typically flagella are proposed to be turned off during the sessile biofilm growth mode (42–44). Recent work, however, discussed below has suggested that flagella in *E. coli* biofilms may play a structural role. Our studies with *H. pylori* thus build on an emerging theme that flagella are not always turned off in mature biofilms and indeed may play important functions in biofilm structure.

To gain insights into the mechanisms behind the biofilm formation in *H. pylori*, we

TABLE 3 Downregulated genes in *H. pylori* SS1 biofilm using RNA-seq analysis, grouped by functional role categories^a

Locus	Putative identification	Fold change ^b
Cell envelope		
<i>murB</i> (HPYLSS1_01344)	UDP-N-acetylenolpyruvoylglucosamine reductase	-2.52
<i>fliM</i> (HPYLSS1_00401)	Flagellar motor switch protein FliM	-2.25
<i>fliI</i> (HPYLSS1_01346)	Flagellum-specific ATP synthase	-2.16
<i>yohD-1</i> (HPYLSS1_00775)	Inner membrane protein YohD	-2.14
Cellular processes		
<i>mreB</i> (HPYLSS1_01316)	Rod shape-determining protein MreB	-2.95
<i>ureA</i> (HPYLSS1_00068)	Urease subunit α	-2.28
<i>groEL</i> (HPYLSS1_00013)	60-kDa chaperonin	-2.17
<i>hcpC</i> (HPYLSS1_01039)	Cysteine-rich protein HcpC	-3.78
<i>cmmA</i> (HPYLSS1_01486)	Polymer-forming cytoskeletal family protein	-2.58
<i>typA</i> (HPYLSS1_00442)	GTP-binding protein	-2.02
Regulatory functions		
<i>hsIV</i> (HPYLSS1_00733)	ATP-dependent protease subunit	-3.33
HPYLSS1_00758	Putative TrmH family tRNA/rRNA	-2.24
Translation		
<i>rplR</i> (HPYLSS1_01253)	50S ribosomal protein L18	-3.09
<i>rpsE</i> (HPYLSS1_01252)	30S ribosomal protein S5	-3.06
<i>rpsG</i> (HPYLSS1_01140)	30S ribosomal protein S7	-2.52
<i>rpsC</i> (HPYLSS1_01262)	30S ribosomal protein S3	-2.49
<i>rpsK</i> (HPYLSS1_01246)	30S ribosomal protein S11	-2.44
<i>rplW</i> (HPYLSS1_01266)	50S ribosomal protein L23	-2.29
<i>rplN</i> (HPYLSS1_01258)	50S ribosomal protein L14	-2.29
<i>rplD</i> (HPYLSS1_01267)	50S ribosomal protein L4	-2.23
<i>rplB</i> (HPYLSS1_01265)	50S ribosomal protein L2	-2.22
<i>rplF</i> (HPYLSS1_01254)	50S ribosomal protein L6	-2.21
<i>rpmF</i> (HPYLSS1_00189)	50S ribosomal protein L32	-2.14
<i>rpsD</i> (HPYLSS1_01245)	30S ribosomal protein S4	-2.12
<i>rplS</i> (HPYLSS1_01093)	50S ribosomal protein L19	-2.09
<i>rplE</i> (HPYLSS1_01256)	50S ribosomal protein L5	-2.07
<i>rplV</i> (HPYLSS1_01263)	50S ribosomal protein L22	-2.02
<i>rpmG</i> (HPYLSS1_01151)	50S ribosomal protein L33	-2.02
<i>fusA</i> (HPYLSS1_01139)	Elongation factor G	-2.23
<i>tufA</i> (HPYLSS1_01152)	Elongation factor Tu	-2.14
<i>yigZ</i> (HPYLSS1_01411)	Elongation factor	-2.05
Amino acid biosynthesis		
<i>trpB</i> (HPYLSS1_01240)	Tryptophan synthase β chain	-2.68
Fatty acid and phospholipid metabolism		
<i>acpP_2</i> (HPYLSS1_00944)	Acyl carrier protein	-2.96
<i>plsX</i> (HPYLSS1_00190)	Phosphate acyltransferase	-2.71
<i>scoB</i> (HPYLSS1_00895)	3-Oxoacid coenzyme A-transferase, subunit B	-2.11
Biosynthesis of cofactors, prosthetic groups, and carriers		
<i>birA</i> (HPYLSS1_01084)	Bifunctional ligase/repressor BirA	-3.29
<i>ribH</i> (HPYLSS1_00002)	6,7-Dimethyl-8-ribityllumazine synthase	-2.47
<i>folK</i> (HPYLSS1_00396)	2-Amino-4-hydroxy-6-hydroxymethyldihydropteridine pyrophosphokinase	-2.13
<i>ggt</i> (HPYLSS1_01061)	γ -Glutamyl transpeptidase	-2.06
DNA restriction, modification, recombination, and repair		
HPYLSS1_00145	Recombinase A	-2.46
Energy metabolism		
<i>atpC</i> (HPYLSS1_01075)	ATP synthase ϵ chain	-2.78
<i>atpE</i> (HPYLSS1_01164)	ATP synthase subunit c	-2.48
<i>nifU</i> (HPYLSS1_00210)	NifU-like protein	-2.15
<i>adhA</i> (HPYLSS1_00)	Alcohol dehydrogenase	-2.12
<i>mdaB</i> (HPYLSS1_00836)	Modulator of drug activity B	-2.05
Purine, pyrimidine, nucleosides, and nucleotide		
<i>pyrD_2</i> (HPYLSS1_01468)	Dihydroorotate dehydrogenase B [NAD(+)], catalytic subunit	-2.13

(Continued on next page)

TABLE 3 (Continued)

Locus	Putative identification	Fold change ^b
Hypothetical proteins		
HPYLSS1_00188	Hypothetical protein	-3.92
HPYLSS1_00885	Hypothetical protein	-3.15
HPYLSS1_00325	Hypothetical protein/putative β -lactamase	-2.95
HPYLSS1_00036	Hypothetical protein/putative nucleoid-associated protein	-2.79
HPYLSS1_01458	Hypothetical protein	-2.79
HPYLSS1_01225	Hypothetical protein	-2.71
HPYLSS1_00259	Hypothetical protein	-2.66
HPYLSS1_01321	Hypothetical protein	-2.44
HPYLSS1_01060	Hypothetical protein	-2.32
HPYLSS1_00657	Hypothetical protein	-2.27
HPYLSS1_01143	Hypothetical protein	-2.21
HPYLSS1_00296	Hypothetical protein/putative F _o F ₁ -ATPase subunit	-2.2
HPYLSS1_00945	Hypothetical protein	-2.16
HPYLSS1_00057	Hypothetical protein	-2.03
HPYLSS1_00569	Hypothetical protein	-2.07

^aDownregulation was determined as a cutoff ratio of $\leq -1 \log_2$ fold change and P value of <0.05 .

^bFold change represents the difference in gene expression between biofilm ($n = 3$) and planktonic ($n = 3$) populations.

used RNA sequencing and carried out a comparative transcriptomic analysis between biofilm cells and those in the planktonic state. Using this approach, we observed that 8.18% of genes were significantly differentially expressed between biofilm and planktonic cells, similar to what has been reported in other bacterial systems (43, 45, 46). In our experimental design, we compared a static biofilm mode of growth, where attached cells adhered to the bottom of the wells, with planktonic nonattached cells in the same wells. This approach was used to maintain the same growth conditions as much as possible between biofilm and planktonic samples and likely contributed to the relatively small number of differentially expressed genes. However, since biofilm formation is a dynamic process with frequent switching between planktonic and biofilm

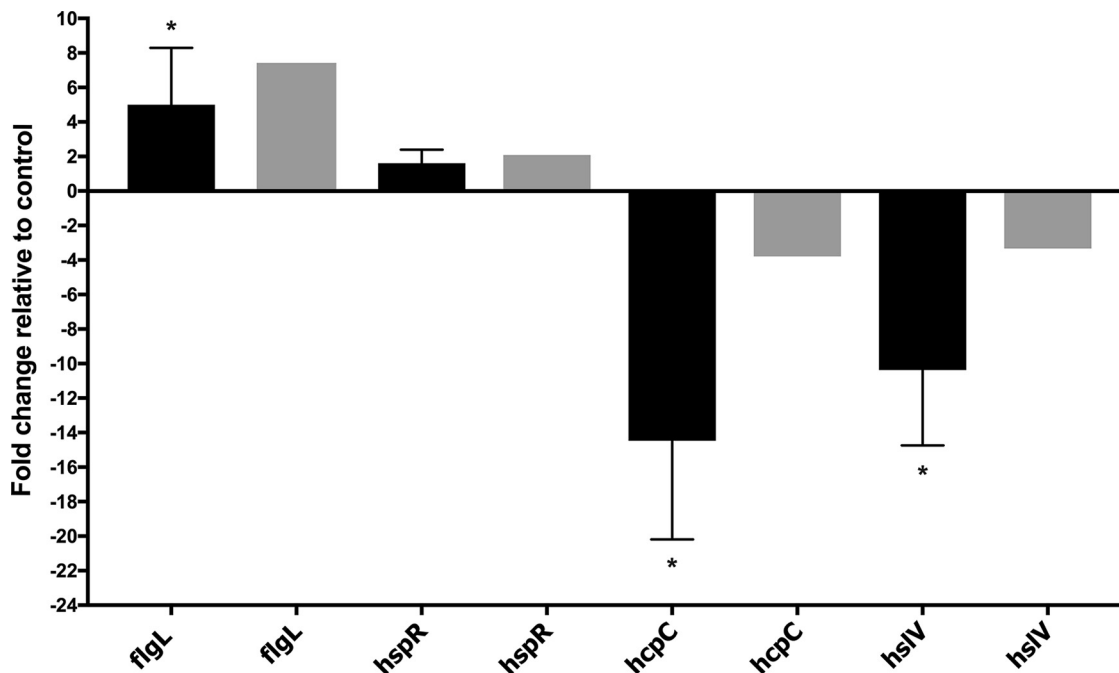


FIG 6 qPCR validation of the transcription of selected differentially expressed genes. The data indicate the fold change in expression of genes in *H. pylori* biofilm cells compared to planktonic cells. Fold changes in gene expressions were calculated after normalization of each gene with the constitutively expressed gene control *gapB*. Bars represent the mean and error bars the standard error of the mean. Black and gray bars represent qPCR and RNA-seq results, respectively. Statistical analyses were performed using threshold cycle ($2^{-\Delta\Delta CT}$) values, and all results with an asterisk were statistically significant ($P < 0.01$).

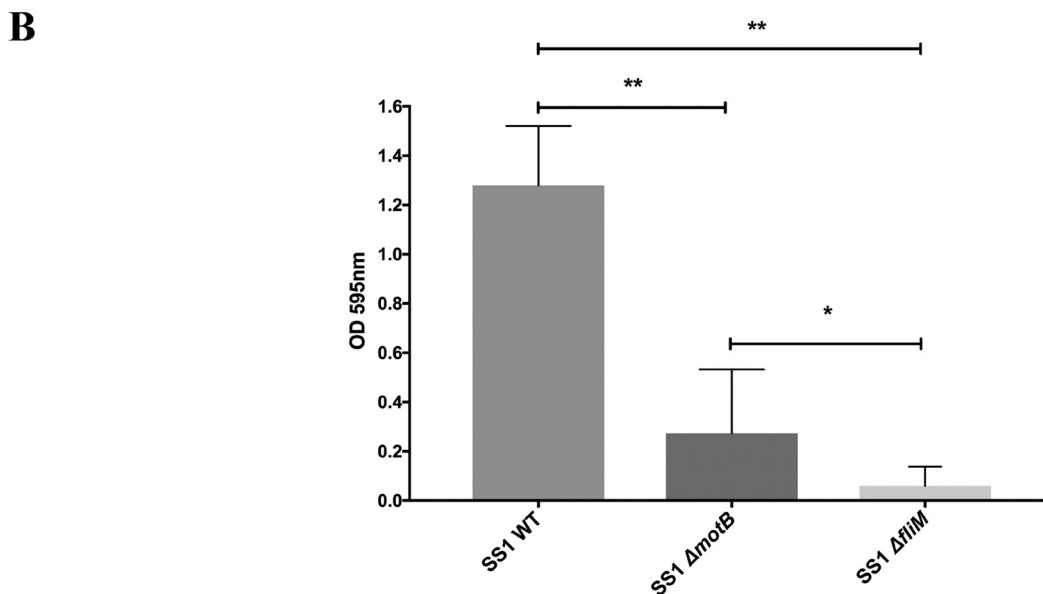
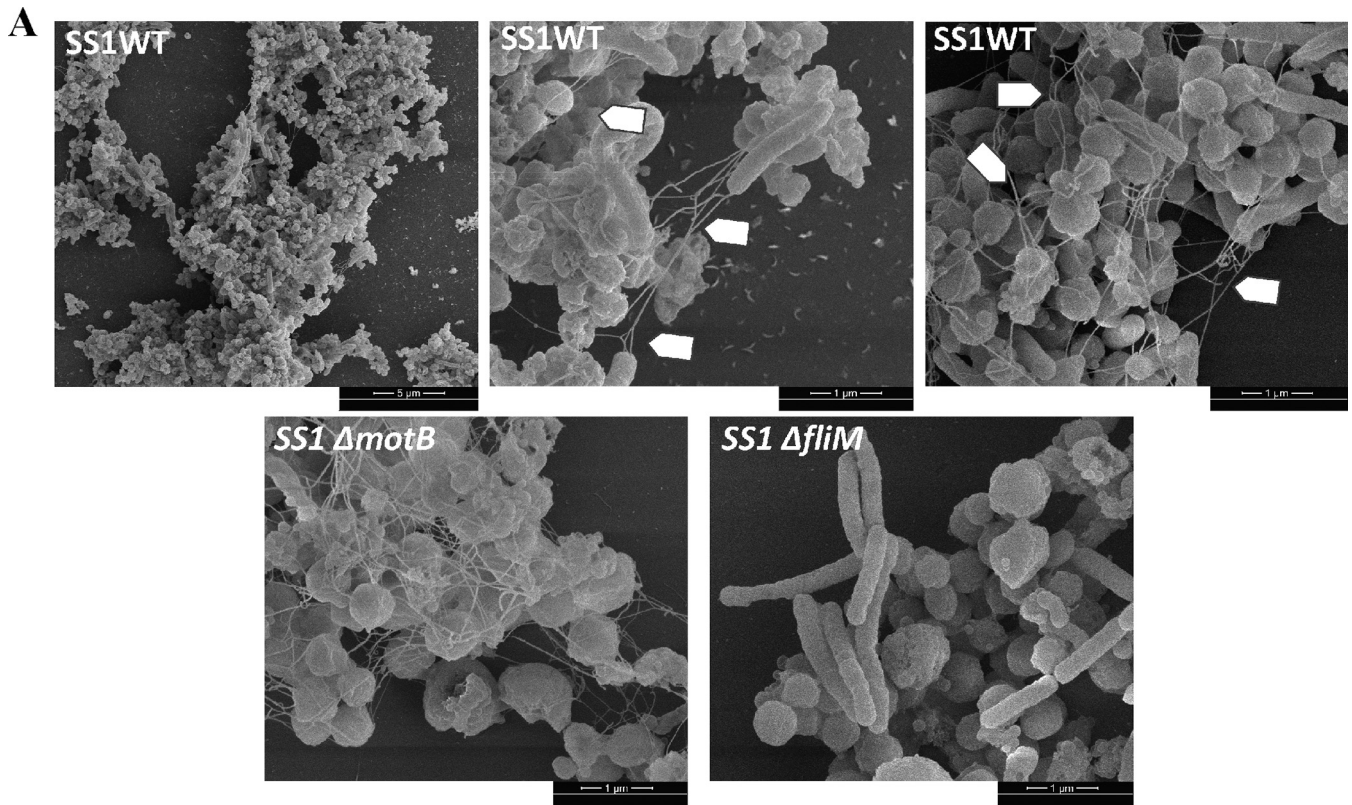


FIG 7 Flagella play integral roles in *H. pylori* biofilms. (A) Scanning electron microscope (SEM) images of biofilms formed by *H. pylori* wild-type SS1 (SS1 WT), the isogenic nonmotile but flagellated Δ motB mutant (SS1 Δ motB), and the isogenic aflagellated Δ fliM mutant (SS1 Δ fliM). Arrows indicate flagella. (B) Quantification of biofilm formation by the *H. pylori* SS1 wild type and Δ motB and Δ fliM mutants. Strains were grown in BB2 medium for 3 days, followed by biofilm evaluation using the crystal violet assay. Experiments were performed three times independently with 6 to 9 technical replicates for each. Statistical analysis was performed using ANOVA (**, $P < 0.01$; and *, $P < 0.05$).

modes occurring frequently, we likely have some contamination between the biofilm and planktonic populations. Therefore, our method may have missed some genes that are expressed in either population.

One of the findings from our transcriptomic analysis was that several flagellar protein transcripts were significantly elevated in the biofilm. Notably, these were not for

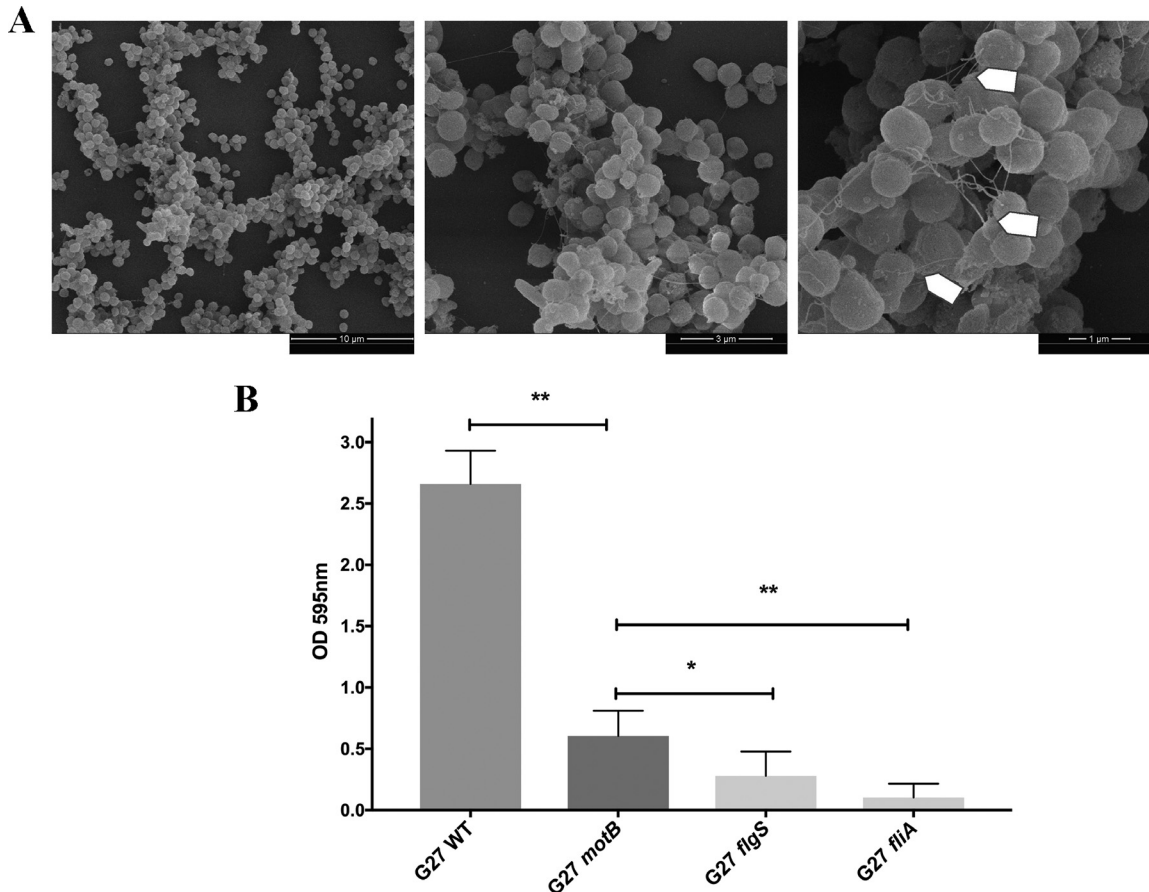


FIG 8 *H. pylori* G27 biofilm contains structurally important flagella. (A) Scanning electron microscope (SEM) images of wild-type G27 *H. pylori* biofilms. Arrows indicate flagella. (B) Quantification of biofilm formation by the *H. pylori* G27 wild type (WT), the nonmotile flagellated *motB* mutant, the nonmotile *flaA* mutant that is reported to have either truncated flagella or no flagella, and the aflagellated and nonmotile *flgS* mutant. Biofilms were evaluated using the crystal violet assay. Experiments were performed 2 times independently with at least 6 technical replicates for each. Statistical analysis was performed using ANOVA (**, $P < 0.01$; and *, $P < 0.05$).

the entire flagellum but instead specific genes encoding the rod, hook, and filament. Specifically, we saw biofilm cell overexpression of genes encoding the FlgB rod protein, the FlgE flagellar hook protein, the FlgK and FlgL hook-filament junction proteins, the FliK hook length control protein, and two flagellins (FlaB and the putative flagellin encoded by *flaG*). Notably absent was the gene for the major flagellin FlaA and genes for the motor and stator. We also saw the upregulation of *flgM*, which encodes an anti-sigma factor that interacts with flagellar sigma factor FliA and therefore would be expected to decrease expression of *flaA* (47).

Historically, flagella have been typically viewed as important only for initial biofilm attachment and later cell dispersion (44, 48). In fact, it has often been suggested that genes encoding flagella are turned off in mature biofilms (42–44). However, other reports have shown that some microbes express flagella during all stages of biofilm development, not only during the attachment and dispersion processes (49, 50). In *E. coli*, several flagellar biosynthesis genes were induced in mature biofilms, and around 20 flagellar genes were regulated throughout all stages of biofilm development and not simply turned off (49). *E. coli* flagella were proposed to have a structural role along with other matrix components (i.e., eDNA and extracellular proteins), acting to cement and hold cells together and to the surface (50, 51). Our data furthermore showed that aflagellated mutants are poor biofilm formers, supporting that these filaments could play a structural role. Taken together, these findings suggest that flagella of *H. pylori* may play a structural role during biofilm formation to help bacteria attach to each other and to surfaces.

Interestingly, we found that the HspR and HrcA transcriptional repressor proteins are upregulated in biofilm cells. These proteins had previously been shown to positively correlate with flagellar expression (52), providing candidate regulatory proteins that function in biofilm cells. HspR and HrcA belong to the heat shock protein family and have been shown to respond to heat shock temperature conditions, although the nature of their “true” signal is not yet clear (52, 53). A previous comparative transcriptomic analysis of wild-type *H. pylori* along with $\Delta hspR$, $\Delta hrcA$, and double mutants revealed a set of 14 genes that were negatively regulated and 29 genes that were positively regulated by these transcriptional regulators (52). The regulated genes include those for chaperones, urease enzyme activity, adhesion to epithelial cells, and flagella. Interestingly, among the 29 positively regulated genes, nearly half (14) encoded flagellar proteins, including the *flgM*, *flaG*, *fliD*, *flgK*, *flgB*, *flgE*, and *fliK* transcripts we identified here. Thus, our data suggest that biofilm conditions activate expression of HrcA and HspR, which in turn upregulate a subset of flagellar genes.

Experiments suggest that HrcA and HspR regulators do not directly regulate the flagellar genes (52). However, they do directly repress expression from several promoters, including those upstream of the *groESL*, *hrcA-grpE-dnaK*, and *cbpA-hspR-hp1026* operons. These gene products encode the major chaperones of *H. pylori* (52–54). Heat shock conditions relieve the repression and allow expression of these operons. Consistent with elevated expression of HspR and HrcA, we found the genes coding for the heat shock protein GroEL to be downregulated in biofilm. Our data suggest that some yet-to-be-determined conditions occurring during biofilm formation trigger the expression of HspR and HrcA regulators.

Other genes associated with stress responses were also upregulated in biofilm cells, including the *pgdA* and *recR* genes. These genes encode a peptidoglycan deacetylase and DNA recombination protein, respectively. RecR has been shown to be involved in repairing DNA double-strand breaks induced by oxidative stress (55), and the *recR* mutant was highly sensitive to DNA-damaging agents and oxidative stress and had a reduced ability to colonize mouse stomachs (55). *pgdA* has been reported to be highly induced by oxidative stress (33, 56). Upregulation of oxidative stress genes has previously been reported in biofilm cells of other organisms, including *E. coli* (57), *Pseudomonas aeruginosa* (42), *Neisseria gonorrhoeae* (58), and *Clostridium perfringens* (48).

As reported for other microorganisms, *H. pylori* biofilm cells have altered metabolism, typically thought to be associated with the restricted availability of nutrients (48, 59). *H. pylori* biofilm cells were characterized by downregulation of the expression of multiple genes involved in metabolism and translation, including *atpC*, *atpE*, and *nifU*, and several ribosomal protein genes. This low-metabolism phenotype seems not be related simply to the presence of coccoid cells but rather to the microenvironment generated during biofilm formation since the proportions of rods and coccoid forms did not differ between planktonic and biofilm populations.

H. pylori biofilm cells may also actively block the translational machinery, as suggested by the upregulation of the gene encoding RsfS, a ribosomal silencing factor. This protein was previously described in *E. coli* and *Mycobacterium tuberculosis* to slow or block the translation machinery during stationary phase and/or nutrition deficiency stress (60). It interacts with the 50S large ribosomal subunit, prevents its association with the 30S ribosomal subunit, and thus blocks formation of functional ribosomes (60). Whether it functions similarly in *H. pylori* remains to be determined.

These observations that biofilm cells may have decreased translation are relevant because at least two of the main antibiotics used to treat *H. pylori* infection, clarithromycin and tetracycline, inhibit the 50S and 30S ribosomal subunits, respectively. Thus, these antibiotics may have less impact on biofilm cells. In fact, recent *in vitro* studies have shown that clarithromycin is 4- to 16-fold less effective on *H. pylori* biofilm cells than on planktonic ones (26, 61).

Taken together, our study has shown that *H. pylori* biofilm cells display a distinct transcriptomic profile compared to their planktonic counterparts. Lower metabolism and stress responses, likely associated with the microenvironment generated in the *H.*

pylori biofilm, could be determinants of antimicrobial tolerance and involved in the persistence and survival of *H. pylori*. However, the upregulated and downregulated genes identified in this study are not specific for biofilm cells, and stress response genes have been previously observed under other conditions when both planktonic and biofilm cells were exposed to various stresses. Therefore, our data do not support the existence of a biofilm-specific genetic program. Additionally, our data show that flagellar filaments are upregulated in biofilm cells and form an integral part of the biofilm matrix. Indeed, *H. pylori* cells without flagella form weak biofilms. These results thus contribute to correcting the idea that flagella are only involved during the first and last steps of biofilm formation and instead support their importance throughout the biofilm process.

MATERIALS AND METHODS

Bacterial strain and growth conditions. *H. pylori* Sydney strain 1 (SS1) (62) and all other *H. pylori* strains used in this study are listed in Table 1. Strains were grown on Columbia horse blood agar (CHBA) containing 0.2% β -cyclodextrin, 10 μ g/ml vancomycin, 5 μ g/ml of cefsulodin, 2.5 U/ml polymyxin B, 5 μ g/ml trimethoprim, and 8 μ g/ml amphotericin B (all chemicals from Thermo Fisher or Gold Biotech). Cultures were grown under microaerobic conditions (5% O₂ and 10% CO₂) at 37°C. For liquid culture and biofilm assay, *H. pylori* was grown in brucella broth (Difco) containing 10% heat-inactivated fetal bovine serum (FBS) (BB10 [Gibco/BRL]) with constant shaking under microaerobic conditions. For biofilm formation, several conditions were tested, including brucella broth containing different percentages of FBS (BB2, BB6, and BB10) and Ham's F-12 (PAA Laboratories GmbH, Pasching, Austria) containing 10% or 2% FBS (HAMS10 and HAMS2, respectively).

Biofilm assays. Biofilm formation assays were carried out as described previously, with slight modification (27). *H. pylori* SS1 was grown overnight in BB10 as described above, diluted to an optical density at 600 nm (OD₆₀₀) of 0.15 with fresh BB10, BB2, BB6, or Ham's medium as desired, and then used to fill triplicate wells of a sterile 96-well polystyrene microtiter plate (Costar no. 3596). Following static incubation for 1, 2, 3, or 5 days under microaerobic conditions, culture medium was removed by aspiration, and the plate was washed twice with phosphate-buffered saline (PBS). The wells were then filled with 200 μ l of crystal violet (0.1% wt/vol), and the plate was incubated for 2 min at room temperature. After removal of the crystal violet solution by aspiration, the plate was washed twice with PBS and dried for 20 min at room temperature. To visualize biofilms, 200 μ l of ethanol (70% vol/vol) was added to the wells, and the absorbance at 590 nm was measured.

Biofilm dispersion assays. To evaluate the composition of SS1 biofilm matrix, we assessed the response of preformed biofilms to different enzymatic treatments. DNase I and proteinase K (both from Sigma-Aldrich) were used to target extracellular DNA and extracellular proteins, respectively. Biofilms were grown as described above, and after 3 days of growth, the old media were replaced by fresh media containing different concentrations of DNase I (from 380 μ g/ml to 95 μ g/ml) or proteinase K (from 200 μ g/ml to 50 μ g/ml). The cells were then incubated for a further 24 h. Control wells were exposed to media without enzyme. After treatments, the biofilm was stained with crystal violet as described above. Results are presented as a percentage of the untreated control.

Confocal laser scanning microscopy. Biofilms of *H. pylori* SS1 were prepared as described above using BB2; however, for confocal laser scanning microscopy (CLSM), μ -Slide 8-well glass bottom chamber slides (ibidi, Germany) were used instead of 96-well microtiter plates. Three-day-old biofilms were stained with FilmTracer FM 1–43 (Invitrogen), BOBO-3 (Invitrogen), Filmtracer SYPRO Ruby biofilm matrix stain (Invitrogen), or the FilmTracer LIVE/DEAD biofilm viability kit (Invitrogen) according to the manufacturer's instructions. Stained biofilms were visualized by CLSM with an LSM 5 Pascal laser scanning microscope (Zeiss) and images were acquired using Imaris software (Bitplane). Biomass analysis of biofilm was carried using FM 1–43-stained z-stack images (0.1- μ m thickness) obtained by CLSM from randomly selected areas. The biomass of biofilms was determined using COMSTAT (63).

RNA extraction and library construction. Biofilms of *H. pylori* SS1 were grown in 6-well plates (Costar) in BB2 as described above. After 3 days of incubation, medium containing nonattached planktonic bacteria (the planktonic fraction) was removed by pipetting, and the cells were harvested by centrifugation and washed twice with PBS. The attached bacteria, representing the biofilm fraction, were washed twice with PBS to remove any remaining planktonic cells. Attached cells were scrapped off the plate using a cell scraper. Both planktonic and biofilm fractions were subject to total RNA extraction using the TRIzol Max bacterial enhancement kit (Ambion, Life Technology, Carlsbad, CA) as described by the manufacturer. RNA was further purified and concentrated using an RNeasy kit (Qiagen). rRNA was removed using the RiboZero magnetic kit (Illumina). Sequencing libraries were generated using NEBNext Ultra Directional RNA library prep kit for Illumina (NEB, USA). cDNA library quality and amount were verified using the Agilent Bioanalyzer 2100 system (Agilent Technologies, CA) and then sequenced using Illumina NextSeq Mid-Output (University of California Davis Genome Center).

Transcriptomic analysis. RNA-seq data were analyzed using CLC Genomics Workbench (version 11.0; CLC Bio, Boston, MA). After adapters were trimmed, forward- and reverse-sequenced reads generated for each growth state (biofilm versus planktonic, with three biological replicates for each condition) were mapped against the SS1 reference genome (32) to quantify gene expression levels for each experimental condition. The expression value was measured in reads per kilobase per million

mapped reads (RPKM). Genes were considered differentially expressed when the \log_2 fold change was above 1 and the *P* value was less than 0.05.

Quantitative PCR. To validate the RNA-seq data, we performed qPCR to quantify the transcription of four differentially expressed genes (two upregulated genes and two downregulated genes). The fold change in gene expression was calculated after normalization of each gene with the constitutively expressed gene *gapB* (64). Primers used for this experiment are listed 5' to 3' below: *gapB* forward, GCCTCTTGACGACTAACGC, and *gapB* reverse, CTTTGCTCACGCCGGTGCTT; *flgL* forward, CAGGCAGCTC ATGGATGCGA, and *flgL* reverse, CGCTGTGCAAGGCGTTTTGA; *hspR* forward, TAGGCGTGCACCCTCAAACC, and *hspR* reverse, CGCCCGTAGATTAACCC; *hpcC* forward, GGGTTTTGTGCTTGGGTGCG, and *hpcC* reverse, TTCCACCCCTGCCCTTGAT; and *hslV* forward, GATTTGCCGAAGCACTGCG, and *hslV* reverse, ATCATCGCTTCCAGTCGGCG.

Construction of *H. pylori* mutants. The SS1 Δ *flhM* mutant was created by natural transformation of the SS1 wild type with plasmid pBS-*flhM::catmut* (40), which replaces most of the *flhM* gene, corresponding to amino acids 1 to 105, with *cat*. The G27 *motB* mutant was created by natural transformation of the G27 wild type with plasmid pKO114K and selection for kanamycin resistance. pKO114K was made as described for pKO114i (65), but instead of insertion of an *aphA3-sacB* allele, only an *aphA3* allele was inserted. This allele inserts the *aphA3* gene at the position corresponding to amino acid 113 of 257.

Scanning electron microscopy. *H. pylori* biofilms were grown on glass coverslips (12 mm; Chem-glass Life Sciences, Vineland, NJ) by dispersing 4 ml of a culture diluted to an OD of 0.15 in BB2 into wells of a 6-well plate (Costar). The plate was incubated as described above. After 3 days of growth, biofilms formed on the surface of the coverslips and planktonic cells were washed twice with PBS and fixed with 2.5% (wt/vol) glutaraldehyde for 1 h at room temperature. Samples were then dehydrated with a graded ethanol series, critical point dried, sputter coated with ~20 nm of gold (Hammer IV, Technics, Inc., Anaheim, CA), and imaged in an FEI Quanta 3D Dualbeam scanning electron microscope operating at 5 kV and 6.7 pA.

Statistical analysis. Biofilm data were analyzed with GraphPad Prism (version 7.0) software (Graph-Pad, Inc., San Diego, CA) using one-way analysis of variance (ANOVA) followed by Dunnett's multiple-comparison test.

SUPPLEMENTAL MATERIAL

Supplemental material for this article may be found at <https://doi.org/10.1128/mBio.01973-18>.

MOVIE S1, MOV file, 4.3 MB.

ACKNOWLEDGMENTS

We thank Fitnat Yildiz (University of California, Santa Cruz) and Davide Roncarati (University of Bologna, Italy) for helpful suggestions and comments on the study and the manuscript. We thank Aaron Clarke (University of California, Santa Cruz) for assistance with portions of the SEM experiments. We thank Ben Abrams (University of California, Santa Cruz) for CLSM assistance. We also acknowledge Tom Yuzvinsky (University of California, Santa Cruz) for assistance with sample preparation and electron microscopy and the W. M. Keck Center for Nanoscale Optofluidics for use of the FEI Quanta 3D Dualbeam microscope. We also thank David Bernick and the METX Department (University of California, Santa Cruz) for holding and financially supporting the RNA-seq workshop.

The work described here was supported by National Institutes of Health National Institute of Allergy and Infectious Disease (NIAID) grant RO1AI116946 (to K.M.O.). The funders had no role in study design, data collection and interpretation, or the decision to submit the work for publication.

REFERENCES

- Moodley Y, Linz B, Bond RP, Nieuwoudt M, Soodyall H, Schlebusch CM, Bernhoff S, Hale J, Suerbaum S, Mugisha L, van der Merwe SW, Achtman M. 2012. Age of the association between *Helicobacter pylori* and man. *PLoS Pathog* 8:e1002693. <https://doi.org/10.1371/journal.ppat.1002693>.
- Salama NR, Hartung ML, Muller A. 2013. Life in the human stomach: persistence strategies of the bacterial pathogen *Helicobacter pylori*. *Nat Rev Microbiol* 11:385–399. <https://doi.org/10.1038/nrmicro3016>.
- Schreiber S, Konradt M, Groll C, Scheid P, Hanauer G, Werling HO, Josehans C, Suerbaum S. 2004. The spatial orientation of *Helicobacter pylori* in the gastric mucus. *Proc Natl Acad Sci U S A* 101:5024–5029. <https://doi.org/10.1073/pnas.0308386101>.
- Keilberg D, Zavros Y, Shepherd B, Salama NR, Ottemann KM. 2016. Spatial and temporal shifts in bacterial biogeography and gland occupation during the development of a chronic infection. *mBio* 7:e01705–16. <https://doi.org/10.1128/mBio.01705-16>.
- Howitt MR, Lee JY, Lertsethtakarn P, Vogelmann R, Joubert LM, Ottemann KM, Amieva MR. 2011. ChePep controls *Helicobacter pylori* infection of the gastric glands and chemotaxis in the Epsilonproteobacteria. *mBio* 2:e00098–11. <https://doi.org/10.1128/mBio.00098-11>.
- Hu Q, Zhang Y, Zhang X, Fu K. 2016. Gastric mucosa-associated lymphoid tissue lymphoma and *Helicobacter pylori* infection: a review of current diagnosis and management. *Biomark Res* 4:15. <https://doi.org/10.1186/s40364-016-0068-1>.
- Kim SY, Choi DJ, Chung JW. 2015. Antibiotic treatment for *Helicobacter pylori*: is the end coming? *World J Gastrointest Pharmacol Ther* 6:183–198. <https://doi.org/10.4292/wjgpt.v6.i4.183>.

8. Parkin DM. 2006. The global health burden of infection-associated cancers in the year 2002. *Int J Cancer* 118:3030–3044. <https://doi.org/10.1002/ijc.21731>.
9. Choi IJ, Kook MC, Kim YI, Cho SJ, Lee JY, Kim CG, Park B, Nam BH. 2018. *Helicobacter pylori* therapy for the prevention of metachronous gastric cancer. *N Engl J Med* 378:1085–1095. <https://doi.org/10.1056/NEJMoa1708423>.
10. Keilberg D, Ottemann KM. 2016. How *Helicobacter pylori* senses, targets and interacts with the gastric epithelium. *Environ Microbiol* 18:791–806. <https://doi.org/10.1111/1462-2920.13222>.
11. Celli JP, Turner BS, Afdhal NH, Keates S, Ghiran I, Kelly CP, Ewoldt RH, McKinley GH, So P, Erramilli S, Bansil R. 2009. *Helicobacter pylori* moves through mucus by reducing mucin viscoelasticity. *Proc Natl Acad Sci U S A* 106:14321–14326. <https://doi.org/10.1073/pnas.0903438106>.
12. Tan S, Tompkins LS, Amieva MR. 2009. *Helicobacter pylori* usurps cell polarity to turn the cell surface into a replicative niche. *PLoS Pathog* 5:e1000407. <https://doi.org/10.1371/journal.ppat.1000407>.
13. Anderson JK, Huang JY, Wreden C, Sweeney EG, Goers J, Remington SJ, Guillemin K. 2015. Chemorepulsion from the quorum signal autoinducer-2 promotes *Helicobacter pylori* biofilm dispersal. *mBio* 6:e00379-15. <https://doi.org/10.1128/mBio.00379-15>.
14. Flemming HC, Wingender J. 2010. The biofilm matrix. *Nat Rev Microbiol* 8:623–633. <https://doi.org/10.1038/nrmicro2415>.
15. Hathroubi S, Mekni MA, Domenico P, Nguyen D, Jacques M. 2017. Biofilms: microbial shelters against antibiotics. *Microb Drug Resist* 23: 147–156. <https://doi.org/10.1089/mdr.2016.0087>.
16. Sapi E, Balasubramanian K, Poruri A, Maghsoudlou JS, Socarras KM, Timmaraju AV, Filush KR, Gupta K, Shaikh S, Theophilus PA, Luecke DF, MacDonald A, Zelger B. 2016. Evidence of *in vivo* existence of Borrelia biofilm in borrelial lymphocytomas. *Eur J Microbiol Immunol* 6:9–24. <https://doi.org/10.1556/1886.2015.00049>.
17. Boisvert AA, Cheng MP, Sheppard DC, Nguyen D. 2016. Microbial biofilms in pulmonary and critical care diseases. *Ann Am Thorac Soc* 13:1615–1623. <https://doi.org/10.1513/AnnalsATS.201603-194FR>.
18. Hall-Stoodley L, Hu FZ, Gieseke A, Nistico L, Nguyen D, Hayes J, Forbes M, Greenberg DP, Dice B, Burrows A, Wackym PA, Stoodley P, Post JC, Ehrlich GD, Kerschner JE. 2006. Direct detection of bacterial biofilms on the middle-ear mucosa of children with chronic otitis media. *JAMA* 296:202–211. <https://doi.org/10.1001/jama.296.2.202>.
19. Vakil N, Vaira D. 2013. Treatment for *H. pylori* infection: new challenges with antimicrobial resistance. *J Clin Gastroenterol* 47:383–388. <https://doi.org/10.1097/MCG.0b013e318277577b>.
20. Hathroubi S, Servetas SL, Windham I, Merrell DS, Ottemann KM. 2018. *Helicobacter pylori* biofilm formation and its potential role in pathogenesis. *Microbiol Mol Biol Rev* 82:e00001-18. <https://doi.org/10.1128/MMBR.00001-18>.
21. Carron MA, Tran VR, Sugawa C, Cotichia JM. 2006. Identification of *Helicobacter pylori* biofilms in human gastric mucosa. *J Gastrointest Surg* 10:712–717. <https://doi.org/10.1016/j.gassur.2005.10.019>.
22. Cotichia JM, Sugawa C, Tran VR, Gurrola J, Kowalski E, Carron MA. 2006. Presence and density of *Helicobacter pylori* biofilms in human gastric mucosa in patients with peptic ulcer disease. *J Gastrointest Surg* 10: 883–889. <https://doi.org/10.1016/j.gassur.2005.12.009>.
23. Cole SP, Harwood J, Lee R, She R, Guiney DG. 2004. Characterization of monospecies biofilm formation by *Helicobacter pylori*. *J Bacteriol* 186: 3124–3132. <https://doi.org/10.1128/JB.186.10.3124-3132.2004>.
24. Windham IH, Servetas SL, Whitmire JM, Pletzer D, Hancock REW, Merrell DS. 2018. *Helicobacter pylori* biofilm formation is differentially affected by common culture conditions, and proteins play a central role in the biofilm matrix. *Appl Environ Microbiol* 84:e00391-18. <https://doi.org/10.1128/AEM.00391-18>.
25. Yang FL, Hassanbhai AM, Chen HY, Huang ZY, Lin TL, Wu SH, Ho B. 2011. Proteomannans in biofilm of *Helicobacter pylori* ATCC 43504. *Helicobacter* 16:89–98. <https://doi.org/10.1111/j.1523-5378.2010.00815.x>.
26. Yonezawa H, Osaki T, Hanawa T, Kurata S, Ochiai K, Kamiya S. 2013. Impact of *Helicobacter pylori* biofilm formation on clarithromycin susceptibility and generation of resistance mutations. *PLoS One* 8:e73301. <https://doi.org/10.1371/journal.pone.0073301>.
27. Bessa LJ, Grande R, Di Iorio D, Di Giulio M, Di Campli E, Cellini L. 2013. *Helicobacter pylori* free-living and biofilm modes of growth: behavior in response to different culture media. *APMIS* 121:549–560. <https://doi.org/10.1111/apm.12020>.
28. Williams JC, McInnis KA, Testerman TL. 2008. Adherence of *Helicobacter pylori* to abiotic surfaces is influenced by serum. *Appl Environ Microbiol* 74:1255–1258. <https://doi.org/10.1128/AEM.01958-07>.
29. Hathroubi S, Hancock MA, Bosse JT, Langford PR, Tremblay YD, Labrie J, Jacques M. 2016. Surface polysaccharide mutants reveal that absence of O antigen reduces biofilm formation of *Actinobacillus pleuropneumoniae*. *Infect Immun* 84:127–137. <https://doi.org/10.1128/IAI.00912-15>.
30. Vogeleer P, Tremblay YDN, Jubelin G, Jacques M, Harel J. 2015. Biofilm-forming abilities of Shiga toxin-producing *Escherichia coli* isolates associated with human infections. *Appl Environ Microbiol* 82:1448–1458. <https://doi.org/10.1128/AEM.02983-15>.
31. Grande R, Di Giulio M, Bessa LJ, Di Campli E, Baffoni M, Guarnieri S, Cellini L. 2011. Extracellular DNA in *Helicobacter pylori* biofilm: a backstairs rumour. *J Appl Microbiol* 110:490–498. <https://doi.org/10.1111/j.1365-2672.2010.04911.x>.
32. Draper JL, Hansen LM, Bernick DL, Abedrabbo S, Underwood JG, Kong N, Huang BC, Weis AM, Weimer BC, van Vliet AH, Pourmand N, Solnick JV, Karplus K, Ottemann KM. 2017. Fallacy of the unique genome: sequence diversity within single *Helicobacter pylori* strains. *mBio* 8:e02321-16. <https://doi.org/10.1128/mBio.02321-16>.
33. Wang G, Maier RJ. 2015. A novel DNA-binding protein plays an important role in *Helicobacter pylori* stress tolerance and survival in the host. *J Bacteriol* 197:973–982. <https://doi.org/10.1128/JB.02489-14>.
34. Hong SH, Lee J, Wood TK. 2010. Engineering global regulator Hha of *Escherichia coli* to control biofilm dispersal. *Microb Biotechnol* 3:717–728. <https://doi.org/10.1111/j.1751-7915.2010.00220.x>.
35. Formichella L, Romberg L, Bolz C, Vieth M, Geppert M, Gottner G, Nolting C, Walter D, Schepp W, Schneider A, Ulm K, Wolf P, Busch DH, Soutschek E, Gerhard M. 2013. A novel line immunoassay based on recombinant virulence factors enables highly specific and sensitive serologic diagnosis of *Helicobacter pylori* infection. *Clin Vaccine Immunol* 20:1703–1710. <https://doi.org/10.1128/CVI.00433-13>.
36. Zhao Y, Yokota K, Ayada K, Yamamoto Y, Okada T, Shen L, Oguma K. 2007. *Helicobacter pylori* heat-shock protein 60 induces interleukin-8 via a Toll-like receptor (TLR)2 and mitogen-activated protein (MAP) kinase pathway in human monocytes. *J Med Microbiol* 56:154–164. <https://doi.org/10.1099/jmm.0.46882-0>.
37. Kusters JG, van Vliet AH, Kuipers EJ. 2006. Pathogenesis of *Helicobacter pylori* infection. *Clin Microbiol Rev* 19:449–490. <https://doi.org/10.1128/CMR.00054-05>.
38. Ta LH, Hansen LM, Sause WE, Shiva O, Millstein A, Ottemann KM, Castillo AR, Solnick JV. 2012. Conserved transcriptional unit organization of the cag pathogenicity island among *Helicobacter pylori* strains. *Front Cell Infect Microbiol* 2:46. <https://doi.org/10.3389/fcimb.2012.00046>.
39. Backert S, Tegtmeyer N, Fischer W. 2015. Composition, structure and function of the *Helicobacter pylori* cag pathogenicity island encoded type IV secretion system. *Future Microbiol* 10:955–965. <https://doi.org/10.2217/fmb.15.32>.
40. O'Rourke J, Bode G. 2001. Morphology and ultrastructure, p 53–67. *In* Mobley HLT, Mendz GL, Hazell SL (ed), *Helicobacter pylori*: physiology and genetics. ASM Press, Washington, DC.
41. Lowenthal AC, Hill M, Sycuro LK, Mehmood K, Salama NR, Ottemann KM. 2009. Functional analysis of the *Helicobacter pylori* flagellar switch proteins. *J Bacteriol* 191:7147–7156. <https://doi.org/10.1128/JB.00749-09>.
42. Sauer K, Camper AK, Ehrlich GD, Costerton JW, Davies DG. 2002. *Pseudomonas aeruginosa* displays multiple phenotypes during development as a biofilm. *J Bacteriol* 184:1140–1154. <https://doi.org/10.1128/jb.184.4.1140-1154.2002>.
43. Whiteley M, Bangera MG, Bumgarner RE, Parsek MR, Teitzel GM, Lory S, Greenberg EP. 2001. Gene expression in *Pseudomonas aeruginosa* biofilms. *Nature* 413:860–864. <https://doi.org/10.1038/35101627>.
44. Guttenplan SB, Kearns DB. 2013. Regulation of flagellar motility during biofilm formation. *FEMS Microbiol Rev* 37:849–871. <https://doi.org/10.1111/1574-6976.12018>.
45. Romero-Lastra P, Sanchez MC, Ribeiro-Vidal H, Llama-Palacios A, Figuero E, Herrera D, Sanz M. 2017. Comparative gene expression analysis of *Porphyromonas gingivalis* ATCC 33277 in planktonic and biofilms states. *PLoS One* 12:e0174669. <https://doi.org/10.1371/journal.pone.0174669>.
46. Beloin C, Valle J, Latour-Lambert P, Faure P, Kzreminski M, Balestrino D, Haagensen JA, Molin S, Prensier G, Arbeille B, Ghigo JM. 2004. Global impact of mature biofilm lifestyle on *Escherichia coli* K-12 gene expression. *Mol Microbiol* 51:659–674.
47. Josenhans C, Niehus E, Amersbach S, Horster A, Betz C, Drescher B, Hughes KT, Suerbaum S. 2002. Functional characterization of the antagonistic flagellar late regulators FliA and FlgM of *Helicobacter pylori* and

- their effects on the *H. pylori* transcriptome. *Mol Microbiol* 43:307–322. <https://doi.org/10.1046/j.1365-2958.2002.02765.x>.
48. Charlebois A, Jacques M, Archambault M. 2016. Comparative transcriptomic analysis of *Clostridium perfringens* biofilms and planktonic cells. *Avian Pathol* 45:593–601. <https://doi.org/10.1080/03079457.2016.1189512>.
 49. Domka J, Lee J, Bansal T, Wood TK. 2007. Temporal gene-expression in *Escherichia coli* K-12 biofilms. *Environ Microbiol* 9:332–346. <https://doi.org/10.1111/j.1462-2920.2006.01143.x>.
 50. Serra DO, Richter AM, Klauk G, Mika F, Hengge R. 2013. Microanatomy at cellular resolution and spatial order of physiological differentiation in a bacterial biofilm. *mBio* 4:e00103-13. <https://doi.org/10.1128/mBio.00103-13>.
 51. Hung C, Zhou Y, Pinkner JS, Dodson KW, Crowley JR, Heuser J, Chapman MR, Hadjifrangiskou M, Henderson JP, Hultgren SJ. 2013. *Escherichia coli* biofilms have an organized and complex extracellular matrix structure. *mBio* 4:e00645-13. <https://doi.org/10.1128/mBio.00645-13>.
 52. Roncarati D, Danielli A, Spohn G, Delany I, Scarlato V. 2007. Transcriptional regulation of stress response and motility functions in *Helicobacter pylori* is mediated by HspR and HrcA. *J Bacteriol* 189:7234–7243. <https://doi.org/10.1128/JB.00626-07>.
 53. Spohn G, Scarlato V. 1999. The autoregulatory HspR repressor protein governs chaperone gene transcription in *Helicobacter pylori*. *Mol Microbiol* 34:663–674. <https://doi.org/10.1046/j.1365-2958.1999.01625.x>.
 54. Spohn G, Danielli A, Roncarati D, Delany I, Rappuoli R, Scarlato V. 2004. Dual control of *Helicobacter pylori* heat shock gene transcription by HspR and HrcA. *J Bacteriol* 186:2956–2965. <https://doi.org/10.1128/JB.186.10.2956-2965.2004>.
 55. Wang G, Lo LF, Maier RJ. 2011. The RecRO pathway of DNA recombinational repair in *Helicobacter pylori* and its role in bacterial survival in the host. *DNA Repair (Amst)* 10:373–379. <https://doi.org/10.1016/j.dnarep.2011.01.004>.
 56. Wang G, Maier SE, Lo LF, Maier G, Dosi S, Maier RJ. 2010. Peptidoglycan deacetylation in *Helicobacter pylori* contributes to bacterial survival by mitigating host immune responses. *Infect Immun* 78:4660–4666. <https://doi.org/10.1128/IAI.00307-10>.
 57. Schembri MA, Kjaergaard K, Klemm P. 2003. Global gene expression in *Escherichia coli* biofilms. *Mol Microbiol* 48:253–267. <https://doi.org/10.1046/j.1365-2958.2003.03432.x>.
 58. Falsetta ML, Steichen CT, McEwan AG, Cho C, Ketterer M, Shao J, Hunt J, Jennings MP, Apicella MA. 2011. The composition and metabolic phenotype of *Neisseria gonorrhoeae* biofilms. *Front Microbiol* 2:75. <https://doi.org/10.3389/fmicb.2011.00075>.
 59. Castro J, Franca A, Bradwell KR, Serrano MG, Jefferson KK, Cerca N. 2017. Comparative transcriptomic analysis of *Gardnerella vaginalis* biofilms vs. planktonic cultures using RNA-seq. *NPJ Biofilms Microbiomes* 3:3. <https://doi.org/10.1038/s41522-017-0012-7>.
 60. Hauser R, Pech M, Kijek J, Yamamoto H, Titz B, Naeve F, Tovchigrechko A, Yamamoto K, Szaflarski W, Takeuchi N, Stellberger T, Diefenbacher ME, Nierhaus KH, Uetz P. 2012. RsfA (YbeB) proteins are conserved ribosomal silencing factors. *PLoS Genet* 8:e1002815. <https://doi.org/10.1371/journal.pgen.1002815>.
 61. Bugli F, Palmieri V, Torelli R, Papi M, De Spirito M, Cacaci M, Galgano S, Masucci L, Paroni Sterbini F, Vella A, Graffeo R, Posteraro B, Sanguinetti M. 2016. *In vitro* effect of clarithromycin and alginate lyase against *Helicobacter pylori* biofilm. *Biotechnol Prog* 32:1584–1591. <https://doi.org/10.1002/btpr.2339>.
 62. Lee A, O'Rourke J, De Ungria MC, Robertson B, Daskalopoulos G, Dixon MF. 1997. A standardized mouse model of *Helicobacter pylori* infection: introducing the Sydney strain. *Gastroenterology* 112:1386–1397. [https://doi.org/10.1016/S0016-5085\(97\)70155-0](https://doi.org/10.1016/S0016-5085(97)70155-0).
 63. Heydorn A, Nielsen AT, Hentzer M, Sternberg C, Givskov M, Ersboll BK, Molin S. 2000. Quantification of biofilm structures by the novel computer program COMSTAT. *Microbiology* 146:2395–2407. <https://doi.org/10.1099/00221287-146-10-2395>.
 64. Collins KD, Hu S, Grasberger H, Kao JY, Ottemann KM. 2018. Chemotaxis allows bacteria to overcome host-generated reactive oxygen species that constrain gland colonization. *Infect Immun*. <https://doi.org/10.1128/IAI.00878-17>.
 65. Ottemann KM, Lowenthal AC. 2002. *Helicobacter pylori* uses motility for initial colonization and to attain robust infection. *Infect Immun* 70:1984–1990. <https://doi.org/10.1128/IAI.70.4.1984-1990.2002>.
 66. Censini S, Lange C, Xiang Z, Crabtree JE, Ghiara P, Borodovsky M, Rappuoli R, Covacci A. 1996. cag, a pathogenicity island of *Helicobacter pylori*, encodes type I-specific and disease-associated virulence factors. *Proc Natl Acad Sci U S A* 93:14648–14653. <https://doi.org/10.1073/pnas.93.25.14648>.
 67. Salama NR, Shepherd B, Falkow S. 2004. Global transposon mutagenesis and essential gene analysis of *Helicobacter pylori*. *J Bacteriol* 186:7926–7935. <https://doi.org/10.1128/JB.186.23.7926-7935.2004>.