

Supplementary A

Monkeypox Incubation Period				
N	Distribution	Mean	Standard Deviation	\hat{R} - mean
54	Gamma (ICC)	7.6 (6.4, 9.0)	5.8 (4.6, 7.3)	1.00
54	Gamma (ICRTC)	8.0 (6.6, 9.6)	6.2 (4.8, 8.0)	1.00
54	Lognormal (ICC)	7.6 (6.3, 9.3)	7.4 (5.2, 10.4)	1.00
54	Lognormal (ICRTC)	7.8 (6.4, 10.0)	8.1 (5.5, 12.2)	1.00

Supplementary B

Monkeypox Serial Interval				
N	Distribution	Mean	Standard Deviation	\hat{R} - mean
79	Weibull (ICC)	8.2 (6.7, 10.0)	9.0 (6.9, 12.0)	1.00
79	Weibull (ICRTC)	9.7 (7.4, 13.2)	11.2 (7.5, 17.6)	1.00
79	Lognormal (ICC)	8.4 (6.5, 10.9)	15.2 (9.6, 23.8)	1.00
79	Lognormal (ICRTC)	10.5 (7.6, 14.8)	21.4 (12.0, 36.9)	1.00

Supplementary C

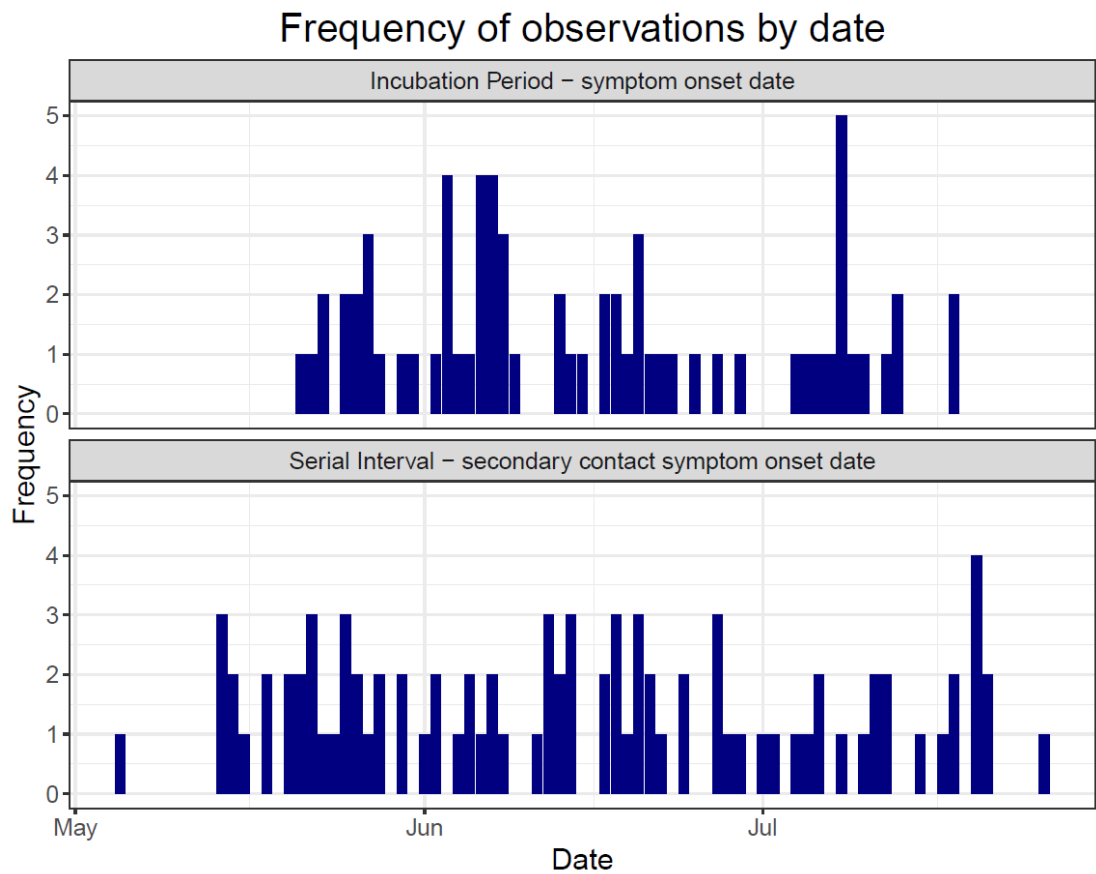


Figure SC A histogram of the frequency of observations for the serial interval and incubation period samples by date. For both the serial interval and incubation period, the data are plotted by the date of the secondary event, i.e. secondary contact symptom onset date and symptom onset date, respectively.