


SYSTEMATIC REVIEW



The impact of frailty on intensive care unit outcomes: a systematic review and meta-analysis

John Muscedere^{1,6*} , Braden Waters², Aditya Varambally³, Sean M. Bagshaw⁴, J. Gordon Boyd¹, David Maslove¹, Stephanie Sibley¹ and Kenneth Rockwood⁵

© 2017 The Author(s). This article is an open access publication

Abstract

Purpose: Functional status and chronic health status are important baseline characteristics of critically ill patients. The assessment of frailty on admission to the intensive care unit (ICU) may provide objective, prognostic information on baseline health. To determine the impact of frailty on the outcome of critically ill patients, we performed a systematic review and meta-analysis comparing clinical outcomes in frail and non-frail patients admitted to ICU.

Methods: We searched the Cochrane Central Register of Controlled Trials, MEDLINE, EMBASE, PubMed, CINAHL, and Clinicaltrials.gov. All study designs with the exception of narrative reviews, case reports, and editorials were included. Included studies assessed frailty in patients greater than 18 years of age admitted to an ICU and compared outcomes between fit and frail patients. Two reviewers independently applied eligibility criteria, assessed quality, and extracted data. The primary outcomes were hospital and long-term mortality. We also determined the prevalence of frailty, the impact on other patient-centered outcomes such as discharge disposition, and health service utilization such as length of stay.

Results: Ten observational studies enrolling a total of 3030 patients (927 frail and 2103 fit patients) were included. The overall quality of studies was moderate. Frailty was associated with higher hospital mortality [relative risk (RR) 1.71; 95% CI 1.43, 2.05; $p < 0.00001$; $I^2 = 32\%$] and long-term mortality (RR 1.53; 95% CI 1.40, 1.68; $p < 0.00001$; $I^2 = 0\%$). The pooled prevalence of frailty was 30% (95% CI 29–32%). Frail patients were less likely to be discharged home than fit patients (RR 0.59; 95% CI 0.49, 0.71; $p < 0.00001$; $I^2 = 12\%$).

Conclusions: Frailty is common in patients admitted to ICU and is associated with worsened outcomes. Identification of this previously unrecognized and vulnerable ICU population should act as the impetus for investigating and implementing appropriate care plans for critically ill frail patients. Registration: PROSPERO (ID: CRD42016053910).

Keywords: Frailty, Frail elderly, Frailty index, Clinical frailty scale, Critically ill, Systematic review

*Correspondence: muscedej@kgh.kari.net

⁶ Kingston General Hospital, Watkins C, Room 5-411, 76 Stuart Street, K7L 2V7 Kingston, ON, Canada

Full author information is available at the end of the article

Braden Waters is the co-lead author.

Take-home message: Frailty is an important baseline characteristic of patients who are critically ill. In this meta-analysis, we show that critically ill frail patients, compared to non-frail patients, are at increased risk of mortality, adverse outcomes, and are less likely to be discharged home.

Introduction

The concept of clinical frailty describes a state or syndrome of reduced physical, physiologic, and cognitive reserve [1]. Frail patients are characterized by a heterogeneous combination of decreased mobility, weakness, reduced muscle mass, poor nutritional status, and diminished cognitive function; all of these render frail individuals more susceptible to extrinsic stressors. Although frailty is more common in older individuals [2], frailty and aging are not synonymous [3], and the former has been estimated to occur in approximately 25% of those over the age of 65 and over 50% of those over the age of 85 [4]. Frail individuals are more likely to require assisted living, be more susceptible to adverse events, and are more likely to die when compared to age-matched non-frail individuals [5, 6]. Frailty has characteristic molecular and physiologic features including increases in inflammatory markers [7] and epigenetic changes characterized by increased DNA methylation [8].

A number of validated tools to screen for, identify, and quantify frailty have been described [3, 9–14]. Frailty is increasingly recognized as a risk factor for poor outcomes across many disease states and healthcare interventions [15–17]. Similarly, there is emerging evidence that frailty status has important implications for individuals developing critical illness [18].

The increased prevalence of frailty with ageing and growing utilization of critical care services by older individuals [19] imply there is likely to be an increased number of frail patients being admitted to intensive care units (ICUs). Considering the diminished resilience and greater vulnerability of frail patients, they may be more likely to require and have longer durations of the life-sustaining ICU therapies but their effectiveness in this population is unclear. Studies to date of critically ill frail patients have utilized a variety of designs, include variable populations and report on a range of outcomes. There is a need to synthesize the evidence in its entirety to understand if it can inform prognostication or decision-making and to identify knowledge gaps to inform future research including the potential for targeted interventions. Therefore, we conducted a systematic review and meta-analysis of the impact of frailty on outcomes for critically ill frail patients admitted to the ICU. We hypothesized that frailty would be associated with higher hospital and long-term mortality, increased utilization of healthcare resources, and prolonged institutionalization. An abstract of this study has been accepted for presentation at the 2017 European Society of Intensive Care Medicine Conference [20].

Methods

This systemic review was conducted and reported according to Meta-analysis Of Observational Studies in

Epidemiology (MOOSE) Guidelines (see Appendix for Moose checklist) [21, 22]. The protocol was registered on PROSPERO (ID: CRD42016053910) in December 2016 after the initial literature search but before the literature search was subsequently updated in January and April of 2017. Eligible studies included observational studies or randomized controlled trials (RCT) that reported on frailty in ICU settings. Studies were included if they included adults (age ≥ 18 years) admitted to the ICU, reported on patient or health services outcomes, and used a validated tool to identify frailty. In order to best evaluate the impact of frailty, only studies comparing frail and non-frail populations were included. Narrative reviews, editorials, case reports, case-series, animal studies, and duplicate publications were excluded. Published abstracts were eligible for inclusion and there were no language restrictions.

Search strategy

We electronically searched MEDLINE, EMBASE, CINAHL, and PubMed databases initially in June 2016 which was then updated in December 2016 and April 2017. Our search strategy cross-referenced frailty and ICUs using appropriate medical subject headings (MeSH) and keywords (Appendix—Search strategies). The references from selected articles and reviews were manually searched for additional studies. We also searched trial registries and conference abstracts for completed but unpublished studies. The searches were developed and conducted in consultation with a research librarian. A protocol for this review has not been published separately.

Study selection

Two authors (AV and BW) independently evaluated the retrieved titles and abstracts of all articles to identify potentially relevant studies. Full-text review was conducted when either reviewer deemed that the abstract warranted further investigation on the basis of our a priori eligibility criteria. Any disagreement was resolved by discussion and consensus.

Data extraction

Data were independently extracted by AV and BW and subsequently verified by JM. Data extracted included the following: author, study design, frailty identification method, number of frail and non-frail patients, and outcomes of interest. Outcomes were chosen a priori and based on two domains; patient-centered outcomes and health services utilization. We collected both unadjusted data and adjusted data. The primary outcomes were in-hospital and long-term mortality (≥ 6 months following ICU admission). Although hospital mortality was initially

chosen as the primary outcome, long-term mortality was later added to the primary outcome with increased availability of data for this outcome. Secondary patient-centered outcomes were ICU mortality and health-related quality-of-life (HRQL). Secondary health service utilization outcomes were ICU and hospital length of stay, receipt of vasoactive agents, receipt and duration of mechanical ventilation (MV), and discharge disposition.

Assessment of quality

The Newcastle-Ottawa Scale (NOS) was used to assess for study quality [23]. The NOS has three domains based on selection of the cohort, comparability of the groups, and quality of the outcomes. The NOS is a nine-point scale with a maximum of four points allocated to selection, two points for comparability, and three points for outcome. The reference for cohort selection was a general medical-surgical adult ICU population and the outcome reference was in-hospital mortality. Studies scoring 7 or more were considered high quality; 4–6, moderate quality; and 4 or less, low quality.

Data analysis

A meta-analysis was performed, where possible, using Review Manager 5.3 software (Cochrane Collaboration). We primarily pooled unadjusted data, although where possible we pooled adjusted data. For the purposes of data aggregation where more than one frailty scale was reported, we used the scale most commonly reported across all the included studies. We calculated pooled risk ratio (RR) and 95% confidence intervals (95% CI) using a random effects model for dichotomous outcomes and weighted mean difference with 95% CIs for continuous data. Where data were reported as medians it was converted to means and standard deviation [24]. Additional unpublished data were sought from authors. A priori planned subgroup analyses were conducted on the basis of the method of frailty identification, the severity of frailty, age of included subjects, and study quality. We hypothesized that the method of frailty identification would significantly change the effect estimate on outcomes, that increasing severity of frailty would be associated with higher mortality, that older frail patients would have higher mortality, and that there would be a decrease in the strength of association between frailty and outcomes in high quality studies.

Statistical heterogeneity was determined using the Mantel–Haenszel (M–H) Chi-squared test and the interclass correlation (I^2) statistic [25]. Significant heterogeneity was defined as $I^2 > 50\%$ or as $p < 0.10$ with the Mantel–Haenszel Chi-squared test. Funnel plots were used to visually inspect for publication bias. We

considered an unadjusted, two-sided $p < 0.05$ to be statistically significant. To assess the probability that the results obtained were robust, we conducted trial sequential analysis (TSA) on long-term mortality with a two-sided $\alpha = 5\%$, a power of 90%, and the assumption that the absence of frailty would be associated with at least a 20% relative risk reduction in long-term all-cause mortality. The TSA was conducted with version 0.9.5.5 Beta (www.ctu.dk/tsa).

Results

Study selection

The initial search identified 1413 articles and abstracts (Appendix Fig. 1). After screening the titles and abstracts, 406 duplicates and 204 unrelated papers were excluded. A further 776 titles were excluded on the basis of publication type. Twenty-nine full-text articles were assessed; 17 studies did not meet inclusion criteria, leaving a total of 12 publications from 10 separate studies fulfilling eligibility since two studies reported new data in two separate publications each [26–37].

Summary of studies

The characteristics of the included studies are summarized in Tables 1 and 2. All were prospective observational cohort studies where frailty was measured on ICU admission; the majority were conducted in medical-surgical ICUs. Frailty was assessed using the clinical frailty scale (CFS) [3] in seven studies, a frailty index (FI) [38] in four, and the frailty physical phenotype (FP) [39] in two (Table 3). Of 3030 patients enrolled in the ten studies, 927 patients were classified as frail and 2103 as non-frail patients. The pooled prevalence of frailty in the ICU populations studied was 30% (95% CI 29–32%) (Fig. 1).

Study quality

There were no randomized controlled studies and the overall quality of the studies was moderate with mean (SD) NOS score of 6.5 (1.3) and a range of 5–8 (Table 4). There were five high quality studies with a score of 7 or above [26, 27, 32, 33, 35].

Mortality

All ten studies reported on mortality. Data could be abstracted for hospital mortality in nine studies, ICU mortality in six studies, and long-term mortality in six studies. Pooled unadjusted data using any frailty measure revealed an increased risk for frail patients compared to non-frail patients for hospital mortality (RR 1.71; 95% CI 1.43, 2.05; $p < 0.00001$; $I^2 = 32\%$) and long-term mortality (RR 1.53; 95% CI 1.40, 1.68; $p < 0.00001$; $I^2 = 0\%$) (Fig. 2). Pooled ICU mortality data revealed significantly increased risk of mortality for those identified as frail (RR

Table 1 Characteristics of included studies

Reference	Study design	Inclusion criteria	Exclusion criteria	Cohort size <i>n</i>	Age illness severity (SD or IQR)	Frailty scale(s) used and how determined	Modification of scale(s) (Y/N) train- ing for assess- ors (Y/N)	Frailty defi- nition	Number frail/non-frail <i>n</i> (%)	Outcomes assessed	Outcomes reported by frailty severity (Y/N)
Bagshaw [26]	Prospective observational multicenter cohort study in 6 Canadian ICUs	Age >50 years Consent obtained	ICU stay <24 h Previous study enrollment	421	67 (10) years APACHE II: 20 (7)	CFS (9 point) Interview with pt., surrogate, or caregiver	No Yes	CFS > 4	Frail: 138 (33) Non-frail: 283 (67)	Mortality, morbidity, health service utilization, AEs, QoL, discharge disposition	Yes
Brummel [32]	Prospective observational multicenter study in 5 ICUs in the USA	Age ≥ 18 Treated for respiratory failure or shock	Organ dysfunction for >72 h Recent ICU admission Severe cognitive impairment Inability to speak in English Substance abuse, Homeless or too far from study site	1040	62 (53–72) years APACHE II: 24 (18–30)	CFS (7 point) Interview with pt. or proxy and review of medical record	No Yes	CFS > 4	Frail: 307 (30) Non-frail: 733 (70)	Mortality, morbidity, health service utilization, AEs, QoL, discharge disposition	Yes
Fisher [31]	Prospective observational feasibility study in an Australian ICU	All patients admitted to ICU over 3 months	Anticipated death within 24 h Admission for palliation or for organ donation	205	60 (17.4) years APACHE III: 24 (26)	CFS (9 point) Interview with next of kin or from chart review	No Yes	CFS > 4	Frail: 28 (14) Non-frail: 177 (86)	Mortality, health service utilization, discharge to rehab	Yes
Heyland [35, 36]	Prospective observational multicenter study in 24 Canadian ICUs	Age ≥ 80 years ICU stay >24 h	Non-Canadian residents Lack of family members	610	84 (3) years APACHE II: 22 (7)	CFS (7 point) FI (43 item) from CGA Interview with surrogate or caregiver	Yes Yes	CFS > 4 FI > 0.2	Frail: CFS: 193 FI: 360 Non-frail: CFS: 416 FI: 250	Mortality, morbidity, health service utilization, QoL, discharge disposition	Yes
Hope [30, 37]	Prospective observational single-center study in the USA	Critically ill adult patients	NR	84	57.4 (18.6) years APACHE IV: 60.1 (24.7)	CFS FAT-ICU Interview with surrogate	Yes NR	CFS N/R FAT-ICU > 3	Frail: CFS: 29 (35) FAT-ICU: 23 (27) Non-frail: CFS: 55 (65) FAT-ICU: 61 (73)	Mortality, health service utilization	No

Table 1 continued

Reference	Study design	Inclusion criteria	Exclusion criteria	Cohort size <i>n</i>	Age illness severity (SD or IQR)	Frailty scale(s) used and how determined	Modification of scale(s) (Y/N) training for assessors (Y/N)	Frailty definition	Number frail/non-frail <i>n</i> (%)	Outcomes assessed	Outcomes reported by frailty severity (Y/N)
Hope [33]	Prospective observational cohort study in two centers in the USA	Age ≥ 18 years ICU admission within 30 days of ER admit ICU admit for non-elective procedure	ICU stay expected <24 h Did not speak English or Spanish No surrogates available	95	57.1 (17.5) years APACHE IV: 60.2 (22)	CFS (9 point) Interview with patient or surrogate	No Yes	CFS > 4	Frail: CFS: 34 (36) Non-frail: 61 (64)	Mortality, morbidity, health service utilization	Yes
Kizilarslanoglu [27]	Prospective observational single-center study of patients in a medical ICU in Turkey	Age >60 years	Inability to evaluate functional, physical, and mental status prior to ICU	122	71 (range 60–101) years N/R	FI (55 item) from CGA Interview with next of kin	No N/R	FI > 0.4	Frail: 26 (21) Non-frail: 96 (79)	Mortality, morbidity, health service utilization	Yes
Le Maguet [28]	Prospective observational multi-center study in 4 French ICUs	Age >65 years ICU stay >24 h	No surrogates and patient could not be interviewed	196	75 (6) years SAPS II: 48 (17)	FP CFS (9 point) Interview with patient or relative	No N/R	FP > 2 CFS > 4	Frail: FP: 80 (41) CFS: 46 (24) Non-frail: FP: 116 (59) CFS: 150 (76)	Mortality, morbidity, health service utilization	Yes
Mueller [29]	Prospective observational study in two surgical ICUs at 1 center in the USA	Age > 18 years ICU stay >24 h	Patients from nursing homes Pre-existing paralysis	102	61.9 (15.8) years APACHE II: 10 (7–15)	FI (50 item) Interview with patient or proxy	No N/R	FI > 0.25	Frail: 39 (38) Non-frail: 63 (62)	Mortality, morbidity, health service utilization	No
Zeng [34]	Prospective observational study in a geriatric ICU in China	Age >65 years	None reported	155	82.7 (7.1) years APACHE II: 14.6 (5.8)	FI (52 items) ICU admission records	Yes N/R	FI > 0.22	Frail: 93 (60) Non-frail: 62 (40)	Mortality	Yes

ICU intensive care unit, SD standard deviation, IQR interquartile range, QoL quality of life, CFS clinical frailty scale, FI frailty index, pt. patient, LOS length of stay, FAT-ICU frailty assessment tool for intensive care unit (FAT-ICU), APACHE acute and chronic health evaluation, SAPS simplified acute physiology score, FP frailty phenotype

Table 2 Frailty outcomes in included studies

Reference	Hospital mortality n (%)	ICU mortality n (%)	Hospital LOS Mean (SD) or median (IQR) days	ICU LOS Mean (IQR) or median (IQR) days	6-month mortality n (%)	12-month mortality n (%)	Hospital re-admission (%)	Patients having adverse events n (%)	Discharge disposition n (%)	12-month quality of life ^a Mean (SD)
Bagshaw [26]	Frail: 44 (31.9) Non-frail: 45 (15.9)	Frail: 16 (11.6) Non-frail: 27 (9.5)	Frail: 30 (10–64) Non-frail: 18 (10–40)	Frail: 7 (4–13) Non-frail: 6 (3–10)	N/R	Frail: 45 (32.6) Non-frail: 60 (21.2)	Frail: 51/91 (56) Non-frail: 92/235 (35)	Frail: 54 (39.1) Non-frail: 83 (29.3)	Home independently: Frail: 20 (22.0) Non-frail: 104 (44.3) Home with help: Frail: 33 (36.3) Non-frail: 58 (24.7) Institution: Frail: 38 (41.8) Non-frail: 73 (31.1)	EQ VAS (n = 67) Frail: 54 (23) Non-frail: 68 (18)
Brummel [32]	Frail: 84 (27%) Non-frail: 130 (18%)	Frail: 65 (21%) Non-frail: 113 (15%)	Frail: 10.0 (6.0–17.1) Non-frail: 9.9 (5.9–17.2)	Frail: 5.4 (2.9–11.1) Non-frail: 5.0 (2.6–11.0)	N/R	Frail: 165 (53.7) Non-frail: 253 (34.5)	N/R	N/R	N/R	SF-36 (n = 450) Frail: Mental: 54 (40–62) Physical: 26 (20–36) Non-frail: Mental: 55 (43–60) Physical: 33 (26–44) N/R
Fisher [31]	Frail: 4 (14.3) Non-frail: 29 (16.3)	Frail: 1 (3.6) Non-frail: 6 (3.4)	N/R	N/R	N/R	N/R	N/R	N/R	Rehabilitation: Frail: 6 (21) Non-frail: 26 (14.7)	N/R
Heyland ^b [35, 36]	Frail: 63 (33) Non-frail: 95 (23)	Frail: 29 (15) Non-frail: 56 (14)	Frail: 21 (11–48) Non-frail: 21 (12–37)	Frail: 6 (4–10) Non-frail: 7 (4–12)	N/R	Frail: 106 (55) Non-frail: 146 (35)	N/R	N/R	Home: Frail: 43 (22.2) Non-frail: 153 (36.7) Acute care institution: Frail: 34 (17.6) Non-frail: 109 (26.2) Long-term care: Frail: 43 (22.2) Non-frail: 38 (9.1)	NR

Table 2 continued

Reference	Hospital mortality n (%)	ICU mortality n (%)	Hospital LOS Mean (SD) or median (IQR) days	ICU LOS Mean (IQR) or median (IQR) days	6-month mor- tality n (%)	12-month mortality n (%)	Hospital re- admission (%)	Patients having adverse events n (%)	Discharge disposition n (%)	12-month quality of life ^a Mean (SD)
Hope ^b [30, 37]	Frail: 11 (32.4) Non-frail: 17 (30.9)	N/R	N/R	N/R	N/R	N/R	N/R	N/R	N/R	N/R
Hope ^b [33]	Frail: 11 (32.4) Non-frail: 6 (9.8)	N/R	Frail: 29.1 (19.9) Non-frail: 21.3 (24.2)	N/R	Frail: 15 (44.1) Non-frail: 16 (26.2)	N/R	N/R	N/R	N/R	N/R
Kizilarslanoglu ^b [27]	Frail: 19 (73.1) Non-frail: 50 (52.1)	Frail: 18 (69.2) Non-frail: 45 (46.9)	N/R	N/R	Frail: 22 (84.6) Non-frail: 59 (61.4)	N/R	N/R	N/R	N/R	N/R
Le Maguet ^b [28]	FP frail: 29 (36) FP non-frail: 36 (31) CFS frail: 23 (50) CFS non-frail: 42 (28)	FP frail: 22 (28) FP non-frail: 19 (24) CFS frail: 17 (37) CFS non-frail: 24 (16)	FP frail: 21 (13–42) FP non-frail: 24 (13–50) CFS frail: 22 (13–42) CFS non-frail: 24 (13–49)	FP frail: 7 (4–14) FP non-frail: 10 (5–18) CFS frail: 8 (4–14) CFS non-frail: 9 (5–18)	FP frail: 23 (29) FP non-frail: 29 (25) CFS frail: 27 (59) CFS non-frail: 45 (30)	N/R	NR	Home: FP frail: 35 (44) FP non-frail: 66 (57) CFS frail: 13 (28) CFS non-frail: 88 (59) Institution: FP frail: 12 (15) FP non-frail: 11 (9) CFS frail: 15 (33) CFS non-frail: 6 (4)	N/R	N/R
Mueller [29]	Frail: 5 (13) Non-frail: 0 (0)	N/R	Frail: 14.6 (11.7) Non-frail: 8.4 (5.0)	Frail: 6.1 (6.2) Non-frail: 3.6 (2.3)	N/R	N/R	N/R	Home: Frail: 12 (31%), Non-frail: 45 (71) Rehabilitation facility: Frail: 13 (33%), Non-frail: 14 (22) Nursing home: Frail: 9 (23) Non-frail: 4 (6)	N/R	N/R
Zeng [34]	N/R	N/R	N/R	N/R	N/R	N/R	N/R	N/R	N/R	N/R

ICU intensive care unit, QoL, quality of life, CFS clinical frailty scale, pt, patient, LOS length of stay, N/R not reported or not available, EQ VAS EuroQol visual analogue scale, SF-36 short form 36 item, mental and physical components

^a Quality of life as reported in the study

^b Outcomes reported are based on the CFS

Table 3 Summary of frailty instruments used in the included studies

Instrument	Description	Characteristics of tool	Definition of frailty	Validation ^a	Comments
Clinical frailty scale (CFS) [3]	Nine-point scale based on subjective assessment of functional status	Scale ranges from very fit (CFS = 1) to very severely frail (CFS = 8) and terminally ill (CFS = 9). Examples: very fit people are robust, active, energetic, and motivated while very severely frail is defined as someone who is completely dependent, approaching end of life	Usually CFS ≥ 4	Yes	Scale is simple and easy to use. It can be used by a variety of healthcare professionals
Frailty index (FI) [37]	Deficit model of frailty assessment where the degree of frailty is calculated by dividing the total deficits by the total number items assessed	Usually 30–70 items are assessed. Any item can be included in the index as long as it meets the following criteria: Item deficits increase with age Item is associated with health Item does not saturate with increasing age Items must cover a range of systems	Usually FI > 0.2	Yes	Often based on a comprehensive geriatric assessment including cognition, functional status, and co-morbid illnesses. Large number of items included can be challenging for its routine use, although it can be imbedded in clinical systems to make use of existing data
Frailty phenotype (FP) [9]	Frailty tool based on the presence of physical phenotypic features	Calculated by the number of phenotypic features present: Weakness Slowness Physical activity Weight loss Self-reported exhaustion	Usually FP > 2	Yes	Focused on objective and self-reported criteria for physical function. No assessment of cognition

^a Scale validated to correlate with risk of adverse events, adverse outcomes from medical interventions, need for hospitalization, need for institutionalization and death in non-ICU populations

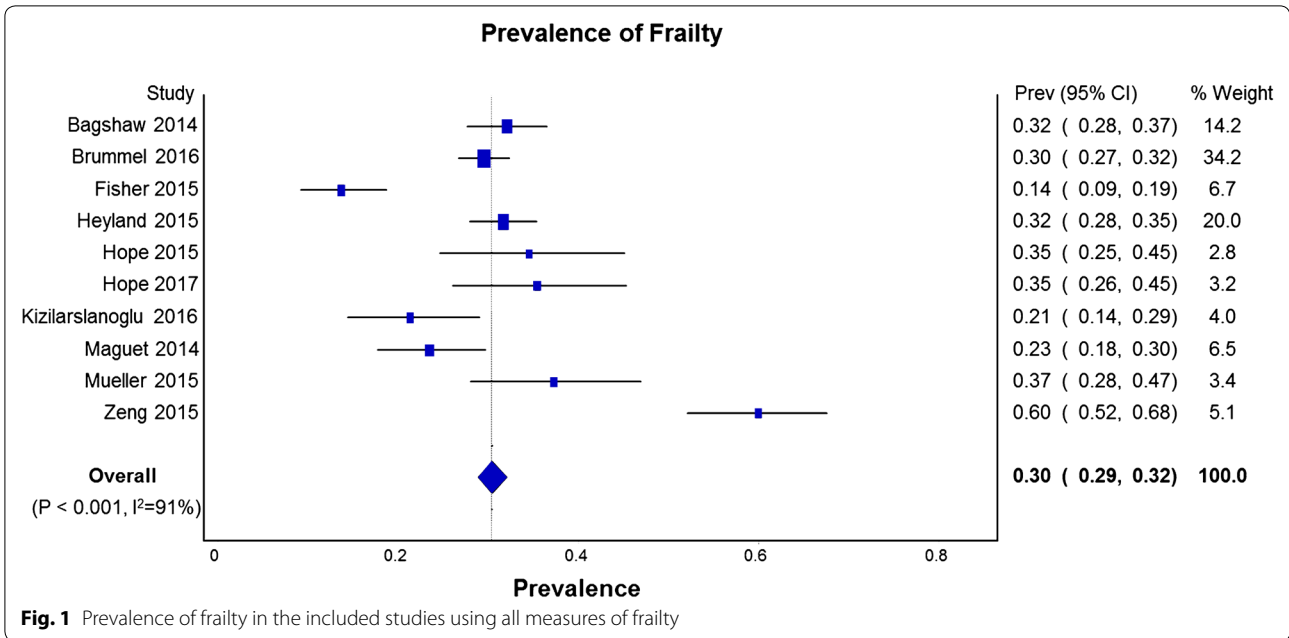


Fig. 1 Prevalence of frailty in the included studies using all measures of frailty

1.51; 95% CI 1.31, 1.75; $p < 0.00001$; $I^2 = 8\%$) (Appendix Fig. 2). TSA for long-term mortality found that the required information size was 1514 and the Z line crossed both conventional boundaries and information size indicating that the association of frailty and long-term mortality was robust (Appendix Fig. 3).

ICU and hospital length of stay (LOS)

Six studies reported hospital LOS [26, 28, 29, 32, 33, 35] and five studies ICU LOS [26, 28, 29, 32, 35]. Pooled hospital and ICU LOS demonstrated non-statistically significant longer stays for frail patients with the mean differences being 3.39 days (95% CI $-0.33, 7.10$; $p = 0.07$; $I^2 = 77\%$) and 0.33 days (95% CI $-0.78, 1.44$; $p = 0.56$; $I^2 = 73\%$) (Appendix Fig. 4) respectively.

Mechanical ventilation and vasopressors

Five of the 10 studies, which included 703 frail and 1591 non-frail patients, reported on receipt of MV [26, 27, 29, 32, 35]. There was no difference between groups in the use of MV (80% vs 82% for frail vs. non-frail patients respectively; RR 1.01; 95% CI 0.93, 1.10; $p = 0.81$; $I^2 = 67\%$). Only one study compared MV duration between groups and found no difference [28]. In addition, five of the 10 studies, which included 442 frail and 1008 non-frail patients, compared the use of vasoactive therapy between these groups [26–29, 35]. There was no difference in the use of vasoactive therapy (58% vs 56% for frail vs. non-frail patients respectively; RR 1.05; 95% CI 0.88, 1.26; $p = 0.57$; $I^2 = 61\%$).

Discharge to home versus hospital or assisted living

Five of the 10 studies reported on discharge disposition [26, 28, 29, 31, 35]. The discharge destinations included home, rehabilitation facility, nursing home, or another acute care institution. As a result of the variety of post-discharge settings, we were only able to aggregate data for home which was reported in four studies [26, 28, 29, 35]. In these studies, reporting on 416 frail and 912 non-frail patients, frail patients were less likely to be discharged home (RR 0.59; 95% CI 0.49, 0.71; $p < 0.00001$; $I^2 = 12\%$) (Fig. 3).

Quality of life

Only two studies reported on HRQL [26, 32, 40]. Both studies reported reduced quality of life at 1 year related to poor physical function in those who were identified as being frail on ICU admission (Table 2). Bagshaw et al. also found worsened quality life related to mental health.

Subgroup analyses

Frailty measure

We conducted subgroup analysis for the association of frailty, as measured with the CFS, FI, and FP, with hospital and long-term mortality (Fig. 4, Appendix Fig. 5). In the seven studies using the CFS data could be pooled including 775 frail and 1875 non-frail patients [26, 28, 31–33, 35, 37] and the RR for hospital mortality was 1.54; 95% CI 1.33, 1.77; $p < 0.00001$; $I^2 = 0\%$. For the two studies pooled on the basis of an FI, the RR for hospital mortality was 3.71; 95% CI 0.22, 63.42; $p = 0.36$; $I^2 = 76\%$ [27, 29] and for two studies reporting on hospital mortality

Table 4 Assessment of study quality using the Newcastle-Ottawa quality assessment scale for cohort studies

	Selection				Comparability			Outcome	
	Cohort is representative of a general adult ICU population ^a	Determination of frailty was applied uniformly ^b	Ascertainment of exposure (Frail and non-frail cohorts were selected from the same cohort)	Demonstration that the outcome of interest was not present at study initiation ^c	Comparability of cohorts on the basis of the design or analysis ^d		Outcome assessment	Follow-up long enough for outcomes to occur	Adequacy of follow-up of cohorts
					Study controls for age	Co-founders controlled			
Bagshaw [26]	-	-	☆	☆	☆	☆	☆	☆	☆
Fisher [31]	-	☆	☆	☆	-	-	☆	☆	☆
Brummel [32]	-	-	☆	☆	☆	☆	☆	☆	☆
Heyland [35, 36]	-	☆	☆	☆	☆	☆	☆	☆	☆
Hope [30, 37]	-	-	-	☆	-	-	☆	☆	☆
Hope [33]	-	-	-	☆	☆	☆	☆	☆	☆
Kizilarslanoglu [27]	-	☆	☆	☆	☆	☆	☆	☆	☆
Le Maguet [28]	-	-	☆	☆	-	-	☆	☆	☆
Mueller [29] 2015	-	-	☆	☆	-	-	☆	☆	☆
Zeng [34]	-	-	☆	☆	☆	☆	☆	-	-

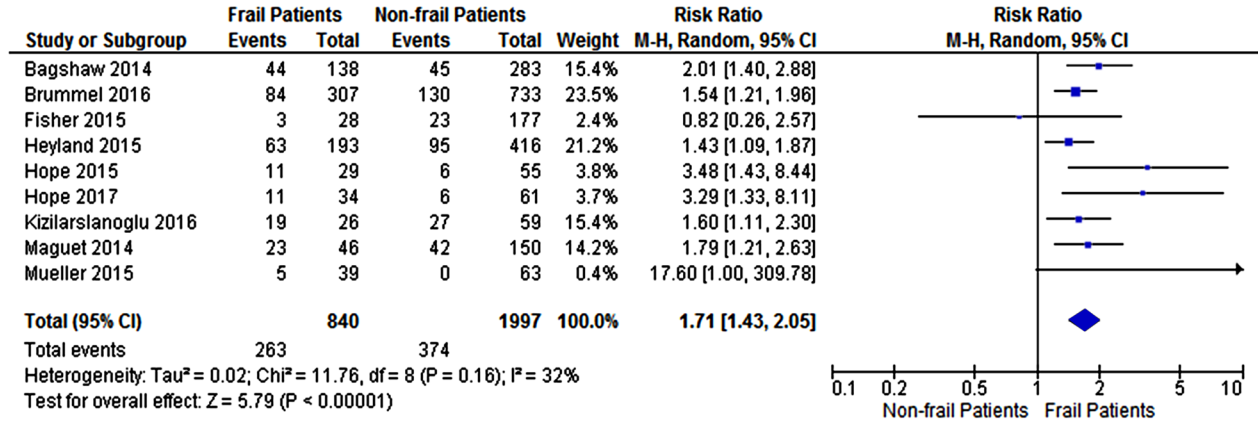
^a Studies did not receive a point if there were age restrictions, the study only considered a specialized ICU population, consecutive patients were not enrolled, or a large number of patients were missed

^b Studies did not receive a point if the determination of frailty for individual patients was based on different interview sources such as the patient or a proxy

^c All studies received a point since the primary outcome was hospital mortality

^d Studies received points if baseline factors such as age, co-morbidities, and severity of illness were accounted for in statistical models with hospital mortality as the dependent variable

a Hospital Mortality



b Long-term Mortality

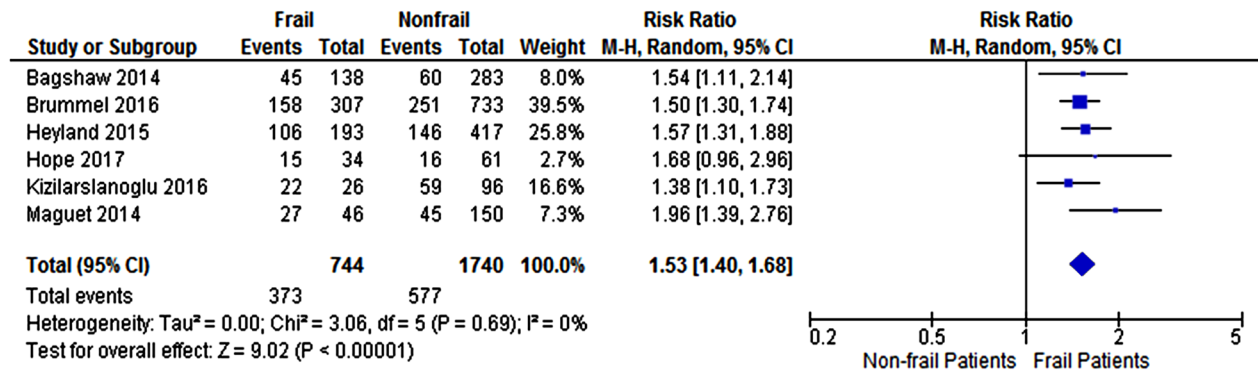


Fig. 2 Forest plot of the risk ratio for hospital and long-term mortality (>6 months) in frail and non-frail patients using all measures of frailty

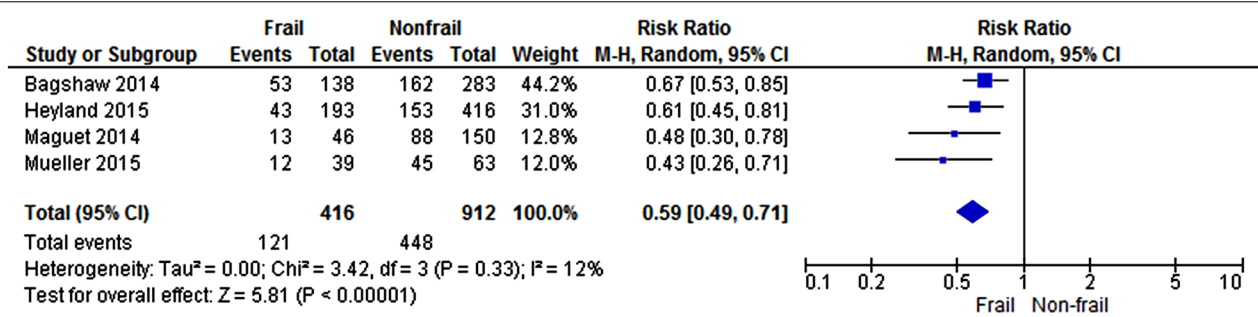


Fig. 3 Forest plot of the risk ratio for discharge home in frail and non-frail patients

using the FP [28, 33] RR was 1.24; 95% CI 0.85, 1.81; $p = 0.32$; $I^2 = 0\%$. On testing for interaction, there was not a statistically significant difference between the measures of frailty for the risk of hospital and long-term mortality ($p = 0.49$ and $p = 0.26$, respectively).

Severity of frailty

Of the ten studies, eight reported on the incremental risk of adverse outcomes, mainly mortality, with increasing frailty score; seven demonstrated increased risk with increased frailty severity while only one did

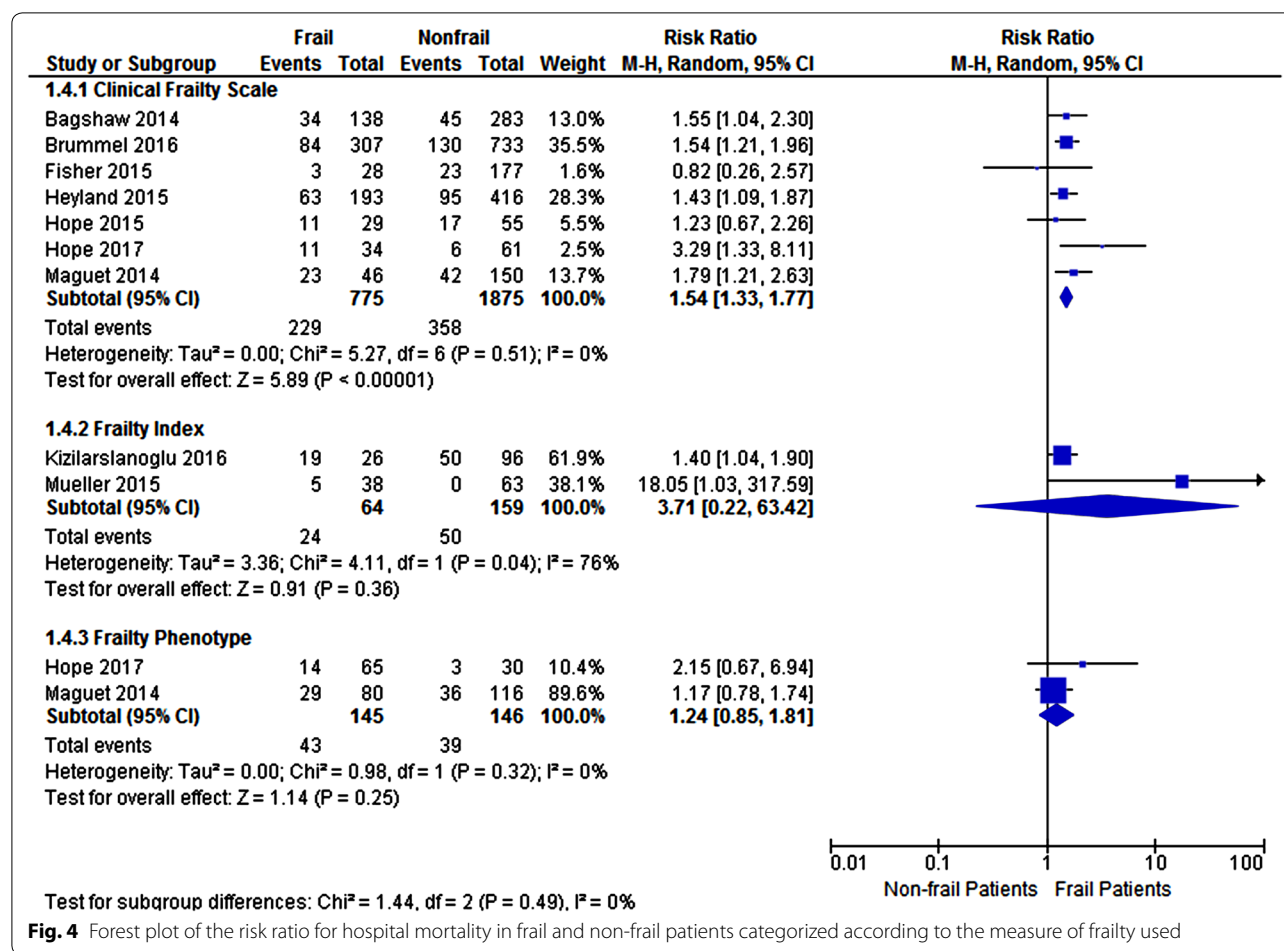


Fig. 4 Forest plot of the risk ratio for hospital mortality in frail and non-frail patients categorized according to the measure of frailty used

not demonstrate an association. Differences in methods of reporting precluded pooling of data. Bagshaw et al. reported that increases in frailty severity as measured by the CFS incrementally increased risk of death adjusted for age, co-morbidities, and severity of illness at 1 year relative to those not frail [26]. Similarly, Brummel et al. reported a stepwise increase in 12-month mortality with each CFS point increase; a CFS of 1 was associated with approximately 90% 1-year survival rate, a CFS of 5 had 50% survival, and those with a CFS of 6/7 had a 35% survival rate [32]. Heyland et al. found that increasing FI was associated with decreased chance of being discharged home and that at 12 months, in multivariate models for every 0.2 increase in FI, the odds ratio of recovery to baseline physical function was 0.32 (0.19, 0.56; $p < 0.0001$) and survival was 0.56 (0.37, 0.85; $p = 0.007$) [35]. Kizilarlanoglu et al. categorized patients as robust (FI < 0.25), pre-frail (FI 0.25–0.40), and frail (FI > 0.40); 6-month mortality increased as the FI increased, 55.9%, 70.3%, and 84.6% respectively [27]. Le Maguet et al. demonstrated that increasing CFS scores and increasing FP

frailty characteristics were associated with increased risk of mortality at 6 months [28]. Mueller et al. found that increasing FI correlated with reduced muscle mass as measured by ultrasound [29]. Similarly Zeng et al. found that the degree of frailty as measured by FI correlated with increased risk of mortality at both 30 days and 300 days [34]. Only one single-center study did not find a significant correlation between increasing CFS and mortality [31].

Impact of age

Six studies adjusted for age in the association between frailty and outcome [26, 27, 32–35] and in all of these studies, frailty was independently associated with adverse outcomes. Five of the studies included older adults of a minimum age as part of their inclusion criteria; one used the age of 50 [26], one used 60 [27], two used the age of 65 [28, 34], and one used the age of 80 [35]. The incidence of frailty in studies enrolling only older adults was 33.1% (95% CI 23.4, 43.5%) compared to 30% in all the included studies.

Table 5 Adjusted outcomes reported in the included studies

Study	Adjusted outcome(s) reported	Method and co-variables adjusted	Association of frailty with adjusted outcome ^a	Incremental value of frailty for predicting outcome
Bagshaw [26]	1-year mortality	Multiple models adjusted for combinations of age, sex, Elixhauser score, APACHE II, SOFA, hospital type	Mortality: 1 year: HR 1.82, 1.28–2.60 (In all models, frailty was associated with a dose dependent increase in 1-year mortality)	Yes: frailty as defined by the CFS was associated with increased mortality at 1 year
Brummel [32]	Hospital mortality 3-month mortality 1-year mortality 3- and 12-month IADL disability 3- and 12-month BADL disability RBANS score SF-36 physical component SF-36 mental component	Adjustment for age, sex, education, comorbidity, ADL, baseline IQCODE, SOFA, CAM-ICU, RASS of -4 or -5, days of severe sepsis, days of MV, daily sedative and opiate doses	Mortality: Hospital: HR 1.1, 0.9–1.5, $p = 0.56$ 3 month: HR 1.4, 1.1–1.8, $p = 0.01$ 1 year: HR 1.5, 1.2–1.8, $p < 0.0001$ IADL disability: 3 month: HR 1.2, 1.0–1.4, $p = 0.04$ 12 month: HR 1.3, 1.1–1.6, $p = 0.002$ BADL disability: 3 month: HR 1.1, 0.9–1.3, $p = 0.23$ 12 month: HR 1.1, 0.9–1.4, $p = 0.10$ RBANS Score: 3 month: $-0.6, -1.7$ to $0.4, p = 0.42$ 12 month: $-0.2, -1.6$ to $1.2, p = 0.12$ SF-36: 3 month physical: $-2.1, -3.0$ to $-1.1, < 0.001$ 1 year physical: $-1.9, -2.9$ to $-0.8, < 0.001$ 3 month mental: $0.5, -0.9$ to $2.0, p = 0.08$ 1 year mental: $-0.5, -2.0$ to $-1.0, p = 0.16$	Yes: frailty as defined by the CFS was associated with increased mortality, increased IADL disability, and reduced SF-36 physical at 3 months and 1 year No: frailty as defined by the CFS was not associated with hospital mortality, BADL disability, RBANS, and SF-36 mental at 3 months and 1 year
Fisher [31]	Hospital length of stay ICU length of stay	Adjustment for severity of illness severity and requirement for palliative care	Hospital LOS (days): $0.1 \pm 0.05, p = 0.04$ ICU LOS: No significant difference	No: frailty as defined by the CFS was not associated with clinically significant increases in hospital or ICU LOS
Hope [30, 37]	Adjusted outcomes not reported			
Heyland [35, 36]	Physical recovery 1-year survival	Multivariate model: adjustment for age, sex, APACHE II, admission diagnosis, ICU diagnosis, baseline physical function, comorbidity, IQCODE, family preferences	Physical recovery: 1-year prediction of physical recovery per 0.2 increase of Fi: OR 0.32, 0.19–0.56, $p < 0.0001$ Survival: Per 0.2 increase of Fi: OR 0.53, 0.36–0.78, $p = 0.002$	Yes: increasing frailty as measured by the Fi was associated with reduced physical recovery and reduced survival at 1 year
Hope [33]	Increased disability at hospital discharge Increased disability or death at 6 months	Multivariate model: adjustment for age, receipt of MV	Increased disability at hospital discharge: CFS: OR 1.8, 0.6–5.5 FP: OR 2.3, 0.9, 6.2 Increased disability or death at 6 months: CFS: OR 3.8, 1.2, 11.7 FP: OR 4.7, 1.6, 14.3	Yes: frailty as measured by a CFS >4 or a FP >2 was associated with increased disability at hospital discharge or the composite of death/disability at 1 year

Table 5 continued

Study	Adjusted outcome(s) reported	Method and co-variables adjusted	Association of frailty with adjusted outcome ^a	Incremental value of frailty for predicting outcome
Kizilarslanoglu [27]	ICU mortality Hospital mortality	Multivariate model: adjustment for age, ICU LOS, SOFA, APACHE II	Mortality: ICU: HR 39.0, 1.2–1232.5, $p = 0.038$ Hospital: HR 36.1, 0.9–1449.2, $p = 0.057$	Yes: frailty as measured by FI was associated with increased ICU mortality No: frailty as measured by FI was not significantly associated with increased hospital mortality
Le Maguet [28]	ICU mortality 6-month mortality	Multivariate model: adjustment for sex, brain injury, cardiac arrest, SAPS II, GCS, memory disorders, severe sepsis, septic shock, dialysis, treatment with corticosteroids, BMI, and vasopressor use	Mortality: ICU (FP >2): HR 3.3, 1.6–6.6, $p < 0.001$ ICU (CFS >4): not significant 6 month (FP >2): not significant 6 month (CFS >4): HR 2.4, 1.5–3.9, $p < 0.001$	Yes: frailty values as measured by the FP and CFS were associated with increased ICU and 6-month mortality, respectively No: frailty values as measured by the CFS and FP were not associated with increased ICU and 6-month mortality, respectively
Mueller [29]	Adverse discharge disposition ICU LOS Hospital LOS	Multivariate models: adjustment for age, APACHE II, co-morbidity, serum creatinine, hemoglobin level, GCS	Adverse discharge disposition: OR 8.01, 1.82–35.27, $p = 0.006$ ICU LOS: IRR 1.49, CI 1.17–1.89, $p = 0.001$ Hospital LOS: IRR 1.57, 1.35–1.82, $p < 0.001$	Yes: frailty as measured by an FI > 0.25 was associated with increased risk of adverse discharge disposition and increased ICU/hospital LOS
Zeng [34]	30-day mortality 300-day mortality	Multivariate models: age, sex, GCS, KS, PPS, APACHE II, APACHE IV, APS	Mortality: 30-day: for every 0.01 increase in FI: RRR 1.11, 1.07–1.15 300-day: for every 0.01 increase in FI: RRR 1.07, 1.04–1.11	Yes: increasing frailty as measured by the FI was associated with increased risk of 30-day and 300-day mortality

HR hazard ratio, APACHE acute physiology chronic health evaluation, SOFA sequential organ failure assessment, IADL instrumental activities of daily living, BADL basic activities of daily living, RBANS repeatable battery for the assessment of neuropsychological status, SF-36 medical outcomes survey short form-36, ADL activities of daily living, IQCODE informant questionnaire on cognitive decline in the elderly, CAM-ICU confusion assessment method for the intensive care unit, RASS richmond agitation sedation scale, MV mechanical ventilation, ICU intensive care unit, FI frailty index, OR odds ratio, CFS clinical frailty score, FP frailty phenotype, LOS length of stay, GCS Glasgow coma scale, KS Karnofsky scale, PPS palliative performance scale, APS acute physiology score, SAPS II score simplified acute physiologic score II, IRR incidence rate ratio, RRR relative risk ratio

^a All ranges are 95% CI

Study quality

There were five high quality studies [26, 27, 32, 33, 35] all reporting on hospital and long-term mortality. In these studies, frailty continued to be associated with increased risk of hospital and long-term mortality (RR 1.63; 95% CI 1.38, 1.91; $p < 0.0001$; $I^2 = 15\%$ and RR 1.51; 95% CI 1.37, 1.66; $p < 0.0001$, $I^2 = 0\%$, respectively) (Appendix Figs. 6 and 7). On testing for interaction, we found that the increased risk for both hospital and long-term mortality was similar in both the high and low quality studies, ($p = 0.54$ and $p = 0.15$, respectively).

Adjusted outcomes

Nine studies reported outcomes adjusted for co-variables including age, illness severity, and co-morbidities, although there was a large degree of variability in the adjusted outcomes reported and the co-variables included in the adjustment models. All of the adjusted data reported in the studies is summarized in Table 5. We were only able to aggregate adjusted data for three studies reporting on long-term mortality [26, 28, 32]. In this pooled adjusted data (Appendix Fig. 8), frailty was associated with increased risk of long-term mortality with a hazard ratio of 1.75 (95% CI 1.36, 2.24; $p < 0.0001$; $I^2 = 43\%$).

Publication bias

Publication bias was assessed visually using a funnel plot for hospital mortality; there was no significant evidence of publication bias (Appendix Fig. 9).

Discussion

Key findings

In this systematic review of 10 observational studies we found that frailty was common, occurring in approximately 30% of adult ICU admissions. We also found that frailty was associated with increased risk of hospital and long-term mortality and that frail patients were less likely to have home as a discharge destination. We found no significant difference among frail and non-frail patients in the receipt of mechanical ventilation, receipt of vasoactive therapy, or duration of ICU stay. Increasing severity of frailty was associated with worsened outcomes including hospital and long-term mortality and our findings were robust when we analyzed high quality studies, adjusted data, and in trial sequential analysis.

Context

Although frailty has been long recognized by geriatric medicine, it has only been recently identified as an important determinant of prognosis for critically

ill patients and our systematic review supports this. Our findings are consistent with the observation that frail patients are at increased risk of poor outcomes in other settings and after healthcare interventions [41, 42]. Potential causes for poor outcomes experienced by critically ill frail patients include its underlying pathophysiology of neuromuscular weakness, sarcopenia, decreased oxygen utilization, inflammation, and immunosenescence [9, 18, 43] reflecting a wide range of age-related molecular and cellular deficits [44, 45]. These may increase susceptibility to inflammatory insults and nosocomial infections common in critical illness. Diminished reserve arising from the multisystem nature of frailty may increase adverse effects of critical illness treatments such as bed rest, sedation, polypharmacy, instrumentation, and MV. Additionally, the reduced resilience of frail patients and increased likelihood of comorbid conditions [46] may make their recovery more difficult [47] and prolonged with reduced probability of returning to baseline increasing the chances of institutionalization [5, 6, 18]. In our study, we found that frail ICU patients were at an increased risk of not being discharged home, although this was reported in only four studies.

We did not find significant differences in ICU LOS, although there was a non-statistically significant increase in hospital stay. The only study reporting duration of MV found no difference between frail and non-frail patients [28]. This is unexpected since there are many factors, including diminished resilience, that may increase recovery time in frail patients prolonging their ICU and hospital stays as compared to non-frail patients. For example, frail patients may be more difficult to wean from mechanical ventilation because of weakness, sarcopenia, and decreased oxygen uptake [9, 17, 18, 43]. Further, as a result of immunosenescence, frail patients may need more time to recover from infections including those nosocomially acquired [45]. Our results are not in keeping with data in surgical populations, which have demonstrated that frail patients have longer stays in hospital and recovery time [6]. Possible reasons for these results include incomplete reporting of data, impact of end-of-life care or limitations of care influenced by frailty status, and discharge practices. A further factor that may have influenced the LOS data and duration of organ support is survival bias. Frail patients may have died earlier than the non-frail and this may have been associated with reduced LOS, as well as the duration of organ support. Data which would have allowed examination of this, such as “days alive and free of organ support”, was rarely reported with only Bagshaw et al. finding that hospital LOS was prolonged in frail survivors. These data should be described in future studies focused on frailty in ICU settings.

Implications for clinicians, policy, and research

An important aspect of this work is to determine if ICU processes of care can be modified to improve outcomes for those identified as frail. Examples of processes which may have differential impact in those who are frail include nutritional support, sedation practices, intensity of mobilization/rehabilitation etc. While research is being conducted on how to improve outcomes, ongoing awareness of frailty as a marker of risk is important and may lead to better advanced care planning. Implicit in this is the recognition that frailty is not only associated with the elderly but may even occur in younger ages [26, 32]. Moreover, frailty may provide a better method to evaluate the trajectory of chronic health and its determinants such as cognition, mobility, function, and social engagement leading to ICU admission. Currents methods such as co-morbidity indices and chronic health evaluations integrated into illness severity scores and mortality prediction models are likely insufficient given the incremental impact of frailty on outcomes after adjusting for illness. Our work supports the value for implementation of frailty screening at the time of ICU admission. Since all the scales used in the included studies correlated with worsened outcomes; after further validation, the CFS which is the most studied, least time intensive, and easy to apply would be the most promising candidate.

ICU researchers and clinicians, who routinely measure co-morbidities, may question why frailty should be additionally measured or measured instead. The value of frailty is that it is a reflection of overall function which is not the case for co-morbidity, although frailty and co-morbidities are inherently intertwined in relation to the degree of frailty [48]. Fried and colleagues attempted to “untangle” these constructs but there is considerable overlap which increases with age [11]. Work on defining health deficit accumulation through network modeling shows that what matters the most is the density of a deficits connections to other deficits which is not captured by simple counting of deficits [49–51]. As an individual ages and accumulates deficits, as would be the case in many older people who are critically ill, the more that frailty and co-morbidity are inextricably intertwined.

Limitations

Although the association between frailty and poor outcomes from critical illness is supported by its underlying pathophysiology, it should be emphasized that the studies in our review were observational, may have been prone to bias, and causation cannot be determined. Two key potential biases are selection and confirmation biases. None of the studies applied the gold standard for

frailty determination which is a comprehensive geriatric assessment performed by a specialist in geriatric medicine [52]. All these studies identified patients after ICU admission and we have no data on frail and non-frail patients declined ICU admission. In addition, the perception and identification of frailty may have influenced care received and limitations of care. Similarly we are unable to ascertain the role of survival bias in our results. Furthermore, we were limited in our ability to pool adjusted data because of heterogeneity in its reporting. However, supporting the importance of frailty as a determinant of outcome was that high quality studies which controlled for age and other co-founders including illness severity found that frailty was independently associated with adverse outcomes. In addition, we found that frail and non-frail patients had similar rates of mechanical ventilation and use of vasopressors reducing the likelihood of care limitations. Moreover, in most of the studies there was a frailty dose response where increasing frailty correlated with increasingly worse outcomes.

An additional limitation is that the included studies used three different frailty measures: the CFS, FP, and FI. We included all of these studies since frailty measures generally correlate well with each other [13]. When we performed subgroup analysis the results remained similar across all measures of frailty. However, unanswered questions remain including which is the most appropriate measure in the ICU setting? Should there be an ICU-specific frailty measure? Does it matter which measure if they all show similar trends for outcome? If this is the case, the one that is least time consuming and most feasible may be a reasonable starting point. Limitations also include variable reporting of outcomes, data originating from different healthcare settings, and need to transform data for aggregation. Further, the late registry in PROSPERO, the addition of long-term mortality as an outcome, and lack of a published protocol with a statistical plan could all increase the risk of bias.

Conclusions

Clinically frail patients are at increased risk of adverse outcomes because of physiological vulnerability when stressors are experienced. In this study, we demonstrate significantly increased risk of mortality and adverse outcomes in critically ill frail patients. Routine assessment of frailty at ICU admission may provide clinicians prognostic information for survival and recovery for their frail ICU patients. Importantly, this may help patients and their families make informed decisions about goals-of-care when they are critically ill. Importantly, further research is required to determine if there are modifiable factors that can improve outcomes for critically ill frail patients.

Electronic supplementary material

The online version of this article (doi:10.1007/s00134-017-4867-0) contains supplementary material, which is available to authorized users.

Author details

¹ Department of Critical Care Medicine, Queen's University, Kingston, ON, Canada. ² Division of Critical Care Medicine, McMaster University, Hamilton, ON, Canada. ³ School of Medicine, Midwestern University, Glendale, AZ, USA. ⁴ Department of Critical Care Medicine, Faculty of Medicine and Dentistry, University of Alberta, Edmonton, Canada. ⁵ Department of Medicine, Division of Geriatric Medicine, Dalhousie University, Halifax, NS, Canada. ⁶ Kingston General Hospital, Watkins C, Room 5-411, 76 Stuart Street, K7L 2V7 Kingston, ON, Canada.

Acknowledgements

We would like to acknowledge and are grateful to Dr. Nathan Brummel and Dr. Aluko Hope for providing additional data from their studies. We would also like to acknowledge the Canadian Frailty Network for facilitating this work.

Authors contributions

JM conceived and supervised the study, extracted data, performed data analysis, and developed the manuscript. BW extracted data, performed data analysis, and developed the manuscript. AV extracted data, performed data analysis, and provided input on manuscript development. SMB, JGB, DM, SS, and KR provided input on data interpretation, helped write the manuscript, and provided critical input on its revisions.

Compliance with ethical standards

Conflicts of interest

Braden Waters, Aditya Varambally, Sean M Bagshaw, Stephanie Sibley, and David Maslove declare that no conflicts of interest exist. J. Gordon Boyd: Dr. Boyd receives a stipend from the Trillium Gift of Life Network to support his role as the Hospital Donation Physician. Kenneth Rockwood: President and Chief Scientific Officer of DGI Clinical, which has contracts with pharma on individualized outcome measurement. In July 2015 he gave a lecture at the Alzheimer Association International Conference in a symposium sponsored by Otsuka and Lundbeck. At that time he presented at an Advisory Board meeting for Nutricia. He plans to attend a 2017 advisory board meeting for Lundbeck. He is a member of the Research Executive Committee of the Canadian Consortium on Neurodegeneration in Aging, which is funded by the Canadian Institutes of Health Research, with additional funding from the Alzheimer Society of Canada and several other charities, as well as from Pfizer Canada and Sanofi Canada. He receives career support from the Dalhousie Medical Research Foundation as the Kathryn Allen Weldon Professor of Alzheimer Research, and research support from the Nova Scotia Health Research Foundation, the Capital Health Research Fund, and the Fountain Family Innovation Fund of the Nova Scotia Health Authority Foundation. John Muscedere. Dr. Muscedere is the Scientific Director for the Canadian Frailty Network which is funded by the government of Canada.

Open Access

This article is distributed under the terms of the Creative Commons Attribution-NonCommercial 4.0 International License (<http://creativecommons.org/licenses/by-nc/4.0/>), which permits any noncommercial use, distribution, and reproduction in any medium, provided you give appropriate credit to the original author(s) and the source, provide a link to the Creative Commons license, and indicate if changes were made.

Received: 30 March 2017 Accepted: 14 June 2017

Published online: 4 July 2017

References

- Clegg A, Young J, Iliffe S, Rikkert MO, Rockwood K (2013) Frailty in elderly people. *Lancet* 381:752–762
- Mitnitski A, Rockwood K (2016) The rate of aging: the rate of deficit accumulation does not change over the adult life span. *Biogerontology* 17:199–204
- Rockwood K, Song X, MacKnight C, Bergman H, Hogan DB, McDowell I, Mitnitski A (2005) A global clinical measure of fitness and frailty in elderly people. *CMAJ* 173:489–495
- Hoover M, Rotermann M, Sanmartin C, Bernier J (2013) Validation of an index to estimate the prevalence of frailty among community-dwelling seniors. *Health Rep* 24:10–17
- Joseph B, Pandit V, Zangbar B, Kulvatunyou N, Hashmi A, Green DJ, O'Keeffe T, Tang A, Vercruyse G, Fain MJ, Friese RS, Rhee P (2014) Superiority of frailty over age in predicting outcomes among geriatric trauma patients: a prospective analysis. *JAMA Surg* 149:766–772
- Robinson TN, Eiseman B, Wallace JI, Church SD, McFann KK, Pfister SM, Sharp TJ, Moss M (2009) Redefining geriatric preoperative assessment using frailty, disability and co-morbidity. *Ann Surg* 250:449–455
- Soysal P, Stubbs B, Lucato P, Luchini C, Solmi M, Peluso R, Sergi G, Isik AT, Manzato E, Maggi S, Maggio M, Prina AM, Cosco TD, Wu YT, Veronese N (2016) Inflammation and frailty in the elderly: a systematic review and meta-analysis. *Ageing Res Rev* 31:1–8
- Breitling LP, Saum KU, Perna L, Schottker B, Holleczek B, Brenner H (2016) Frailty is associated with the epigenetic clock but not with telomere length in a German cohort. *Clin Epigenet* 8:21
- Fried LP, Tangen CM, Walston J, Newman AB, Hirsch C, Gottdiener J, Seeman T, Tracy R, Kop WJ, Burke G, McBurnie MA, Cardiovascular Health Study Collaborative Research Group (2001) Frailty in older adults: evidence for a phenotype. *J Gerontol A Biol Sci Med Sci* 56:M146–M156
- Freiheit EA, Hogan DB, Eliasziw M, Meekes MF, Ghali WA, Partlo LA, Maxwell CJ (2010) Development of a frailty index for patients with coronary artery disease. *J Am Geriatr Soc* 58:1526–1531
- Fried LP, Ferrucci L, Darer J, Williamson JD, Anderson G (2004) Untangling the concepts of disability, frailty, and comorbidity: implications for improved targeting and care. *J Gerontol A Biol Sci Med Sci* 59:255–263
- Rockwood K, Abeysondera MJ, Mitnitski A (2007) How should we grade frailty in nursing home patients? *J Am Med Dir Assoc* 8:595–603
- de Vries NM, Staal JB, van Ravensberg CD, Hobbelen JS, Olde Rikkert MG, Nijhuis-van der Sanden MW (2011) Outcome instruments to measure frailty: a systematic review. *Ageing Res Rev* 10:104–114
- Hogan DB, Maxwell CJ, Afilalo J, Arora RC, Bagshaw SM, Basran J, Bergman H, Bronskill SE, Carter CA, Dixon E, Hemmelgarn B, Madden K, Mitnitski A, Rolfson D, Stelfox HT, Tam-Tham H, Wunsch H (2017) A scoping review of frailty and acute care in middle-aged and older individuals with recommendations for future research. *Can Geriatr J* 20:22–37
- Dasgupta M, Rolfson DB, Stolee P, Borrie MJ, Speechley M (2009) Frailty is associated with postoperative complications in older adults with medical problems. *Arch Gerontol Geriatr* 48:78–83
- Kristjansson SR, Nesbakken A, Jordhøy MS, Skovlund E, Audisio RA, Johannessen HO, Bakka A, Wyller TB (2010) Comprehensive geriatric assessment can predict complications in elderly patients after elective surgery for colorectal cancer: a prospective observational cohort study. *Crit Rev Oncol Hematol* 76:208–217
- Lee DH, Butth KJ, Martin BJ, Yip AM, Hirsch GM (2010) Frail patients are at increased risk for mortality and prolonged institutional care after cardiac surgery. *Circulation* 121:973–978
- McDermid RC, Stelfox HT, Bagshaw SM (2011) Frailty in the critically ill: a novel concept. *Crit Care* 15:301
- Nguyen YL, Angus DC, Boumendil A, Guidet B (2011) The challenge of admitting the very elderly to intensive care. *Ann Intensive Care* 1:29
- Waters BVA, Bagshaw S, Boyd J, Maslove D, Sibley S, Rockwood E, Muscedere J (2017) The impact of frailty on intensive care unit outcomes: a systematic review and meta-analysis. *Intensive Care Med Exp*, September abstract supplementary issue (in press)
- Stroup DF, Berlin JA, Morton SC, Olkin I, Williamson GD, Rennie D, Moher D, Becker BJ, Sipe TA, Thacker SB (2000) Meta-analysis of observational studies in epidemiology: a proposal for reporting. Meta-analysis of observational studies in epidemiology (MOOSE) group. *JAMA* 283:2008–2012
- Waters B, Varambally A, Muscedere J (2017) The impact of frailty on intensive care unit outcomes: a systematic review and meta-analysis. https://www.crd.york.ac.uk/PROSPERO/display_record.asp?ID=CRD42016053910. Accessed 1 June 2017

23. Wells GABS, O'Connell D, Peterson J, Welch V, Losos M, Tugwell P (2014) The Newcastle-Ottawa Scale (NOS) for assessing the quality of nonrandomised studies in meta-analyses. http://www.ohrica/programs/clinical_epidemiology/oxfordasp. Accessed 1 Jan 2017
24. Hozo SP, Djulbegovic B, Hozo I (2005) Estimating the mean and variance from the median, range, and the size of a sample. *BMC Med Res Methodol* 5:13
25. Higgins JP, Thompson SG (2002) Quantifying heterogeneity in a meta-analysis. *Stat Med* 21:1539–1558
26. Bagshaw SM, Stelfox HT, McDermid RC, Rolfson DB, Tsuyuki RT, Baig N, Artiuch B, Ibrahim Q, Stollery DE, Rokosh E, Majumdar SR (2014) Association between frailty and short- and long-term outcomes among critically ill patients: a multicentre prospective cohort study. *CMAJ* 186:E95–102
27. Kizilarslanoglu MC, Civelek R, Kilic MK, Sumer F, Varan HD, Kara O, Arik G, Turkoglu M, Aygencel G, Ulger Z (2017) Is frailty a prognostic factor for critically ill elderly patients? *Aging Clin Exp Res* 29:247–255
28. Le Maguet P, Roquilly A, Lasocki S, Asehounne K, Carise E, Saint Martin M, Mimoz O, Le Gac G, Somme D, Cattenoz C, Feuillet F, Malledant Y, Seguin P (2014) Prevalence and impact of frailty on mortality in elderly ICU patients: a prospective, multicenter, observational study. *Intensive Care Med* 40:674–682
29. Mueller N, Murthy S, Tainter CR, Lee J, Riddell K, Fintelmann FJ, Grabitz SD, Timm FP, Levi B, Kurth T, Eikermann M (2016) Can sarcopenia quantified by ultrasound of the rectus femoris muscle predict adverse outcome of surgical intensive care unit patients as well as frailty? a prospective, observational cohort study. *Ann Surg* 264:1116–1124
30. Hope AAHS, Petti A, Hurtado-Sbordoni M, Gong MN (2015) Bedside frailty assessment and hospital outcomes in critically ill patients. *J Am Geriatr Soc* 63:S180
31. Fisher C, Karalapillai DK, Bailey M, Glassford NG, Bellomo R, Jones D (2015) Predicting intensive care and hospital outcome with the Dalhousie Clinical Frailty Scale: a pilot assessment. *Anaesth Intensive Care* 43:361–368
32. Brummel NE, Bell SP, Girard TD, Pandharipande PP, Jackson JC, Morandi A, Thompson JL, Chandrasekhar R, Bernard GR, Dittus RS, Gill TM, Ely EW (2016) Frailty and subsequent disability and mortality among patients with critical illness. *Am J Respir Crit Care Med*. doi:10.1164/rccm.201605-0939OC
33. Hope AA, Hsieh SJ, Petti A, Hurtado-Sbordoni M, Verghese J, Gong MN (2017) Assessing the usefulness and validity of frailty markers in critically ill adults. *Ann Am Thorac Soc* 14:952–959. doi:10.1513/AnnalsATS.201607.538OC
34. Zeng A, Song X, Dong J, Mitnitski A, Liu J, Guo Z, Rockwood K (2015) Mortality in relation to frailty in patients admitted to a specialized geriatric intensive care unit. *J Gerontol A Biol Sci Med Sci* 70:1586–1594
35. Heyland DK, Garland A, Bagshaw SM, Cook D, Rockwood K, Stelfox HT, Dodek P, Fowler RA, Turgeon AF, Burns K, Muscedere J, Kutsogiannis J, Albert M, Mehta S, Jiang X, Day AG (2015) Recovery after critical illness in patients aged 80 years or older: a multi-center prospective observational cohort study. *Intensive Care Med* 41:1911–1920
36. Heyland D, Cook D, Bagshaw SM, Garland A, Stelfox HT, Mehta S, Dodek P, Kutsogiannis J, Burns K, Muscedere J, Turgeon AF, Fowler R, Jiang X, Day AG, Canadian Critical Care Trials Group, Canadian Researchers at the End of Life Network (2015) The very elderly admitted to ICU: a quality finish? *Crit Care Med* 43:1352–1360
37. Hope AA, Hsieh SJ, Hurtado-Sbordoni M, Petti AM, Gong NM (2015) Frailty assessment and hospital outcomes in critically ill patients. *Am J Respir Crit Care Med* 191:A2285
38. Mitnitski AB, Mogilner AJ, Rockwood K (2001) Accumulation of deficits as a proxy measure of aging. *ScientificWorldJournal* 1:323–336
39. Fried LP, Tangen CM, Walston J, Newman AB, Hirsch C, Gottdiener J, Seeman T, Tracy R, Kop WJ, Burke G, McBurnie MA, Cardiovascular Health Study Collaborative Research Group (2001) Frailty in older adults: evidence for a phenotype. *J Gerontol A Biol Sci Med Sci* 56:146–156
40. Bagshaw SM, Stelfox HT, Johnson JA, McDermid RC, Rolfson DB, Tsuyuki RT, Ibrahim Q, Majumdar SR (2015) Long-term association between frailty and health-related quality of life among survivors of critical illness: a prospective multicenter cohort study. *Crit Care Med* 43:973–982
41. Tu KY, Wu MK, Chen YW, Lin PY, Wang HY, Wu CK, Tseng PT (2016) Significantly higher peripheral insulin-like growth factor-1 levels in patients with major depressive disorder or bipolar disorder than in healthy controls: a meta-analysis and review under guideline of PRISMA. *Medicine (Baltimore)* 95:e2411
42. Muscedere J, Andrew MK, Bagshaw SM, Estabrooks C, Hogan D, Holroyd-Leduc J, Howlett S, Lahey W, Maxwell C, McNally M, Moorhouse P, Rockwood K, Rolfson D, Sinha S, Tholl B, Canadian Frailty Network (CFN) (2016) Screening for frailty in Canada's health care system: a time for action. *Can J Aging* 35:281–297
43. Xue QL (2011) The frailty syndrome: definition and natural history. *Clin Geriatr Med* 27:1–15
44. Rockwood K, Mitnitski A, Howlett SE (2015) Frailty: scaling from cellular deficit accumulation? *Interdiscip Topics Gerontol Geriatr* 41:1–14
45. Vina J, Tarazona-Santabalbina FJ, Perez-Ros P, Martinez-Arnau FM, Borras C, Olaso-Gonzalez G, Salvador-Pascual A, Gomez-Cabrera MC (2016) Biology of frailty: modulation of ageing genes and its importance to prevent age-associated loss of function. *Mol Aspects Med* 50:88–108
46. Hope AA, Gong MN, Guerra C, Wunsch H (2015) Frailty before critical illness and mortality for elderly medicare beneficiaries. *J Am Geriatr Soc* 63:1121–1128
47. Rajabali N, Rolfson D, Bagshaw SM (2016) Assessment and utility of frailty measures in critical illness, cardiology, and cardiac surgery. *Can j cardiol* 32:1157–1165
48. Theou O, Rockwood MR, Mitnitski A, Rockwood K (2012) Disability and co-morbidity in relation to frailty: how much do they overlap? *Arch Gerontol Geriatr* 55:e1–8
49. Mitnitski AB, Rutenberg AD, Farrell S, Rockwood K (2017) Aging, frailty and complex networks. *Biogerontology*. doi:10.1007/s10522-017-9684-x
50. Farrell SG, Mitnitski AB, Rockwood K, Rutenberg AD (2016) Network model of human aging: frailty limits and information measures. *Phys Rev E* 94:052409
51. Taneja S, Mitnitski AB, Rockwood K, Rutenberg AD (2016) Dynamical network model for age-related health deficits and mortality. *Phys Rev E* 93:022309
52. Turner G, Clegg A, British Geriatrics Society, Age UK, Royal College of General Practitioners (2014) Best practice guidelines for the management of frailty: a British Geriatrics Society, Age UK and Royal College of General Practitioners report. *Age Ageing* 43:744–747