

RESEARCH ARTICLE

Open Access



# The impact of expanded brucellosis surveillance in beef cattle on human brucellosis in Korea: an interrupted time-series analysis

Sukhyun Ryu<sup>1,2,3</sup>, Ricardo J. Soares Magalhães<sup>4,5</sup> and Byung Chul Chun<sup>2,6\*</sup> 

## Abstract

**Background:** Korean surveillance program for bovine brucellosis was improved by extending it to beef slaughterhouses and by pre-movement testing of bulls on May 2005 (Intervention 1). The bovine brucellosis surveillance program was further extended to beef cattle farms with more than 10 heads of cattle on June 2006 (Intervention 2).

**Methods:** To quantify the temporal relationship between bovine and human brucellosis, a time-series analysis was conducted using Korean national notification data reported between January 2004 and December 2014.

**Results:** Our findings indicate that while during the pre-intervention phase (January 2004 to March 2005) there was no significant temporal relationship between the incidences of bovine and human brucellosis, significant temporal relationships were observed after Intervention 1 (June 2005 to June 2006, no lag,  $\beta = 0.57$ ,  $p = 0.04$ ), and Intervention 2 (July 2006 to June 2007, 1-month lag,  $\beta = 0.65$ ,  $p = 0.03$ ). Furthermore, significant changes in incidence in human were observed after Intervention 1 ( $\beta = -0.17$  per 10 million-people,  $p = 0.03$ ) and Intervention 2 ( $\beta = -0.19$  per 10 million-people,  $p = 0.04$ ).

**Conclusions:** These findings indicated the changes of a nationwide comprehensive surveillance programme targeting all cattle is required for effective reduction in the human population.

**Keywords:** Brucellosis, Policy, Prevention, Surveillance, Korea

## Background

Brucellosis still remains a zoonotic disease of public health importance even in developed countries, causing a substantial loss of productivity in livestock industries and chronic disease in humans [1, 2]. *Brucella* is a gram-negative bacterium that can be transmitted to humans through direct contact of mucous membranes or broken skin with tissues from infected animals, ingestion of infected animals' products such as raw meat or inhalation of infectious aerosols [3–5]. In the Republic of Korea, human brucellosis was first identified in 2002

in a 41-year-old male livestock farmer following the ingestion of unpasteurized milk [6]. Previous studies in Korea demonstrated that human brucellosis infections occurred as a result of exposure to infected cattle, and the most common strain of *Brucella* sp. is *Brucella abortus*, which is typically found in cattle populations [7–9].

In Korea, bovine brucellosis was first detected in 1955 in imported cattle originating from the US [10]. Between 1964 and 2003, control and prevention measures of bovine brucellosis mainly focused on dairy herds using the milk ring test on bulk milk samples [11–13]. Control measures including rapid depopulation were undertaken upon detection of a bovine case [11]. However, as a result of the reported number of case of human and bovine brucellosis in 2002, the surveillance of bovine brucellosis was expanded in 2004 to cover beef cattle. The

\* Correspondence: [chun@korea.ac.kr](mailto:chun@korea.ac.kr)

<sup>2</sup>Department of Epidemiology and Health Informatics, Graduate School of Public Health, Korea University, Seoul, Republic of Korea

<sup>6</sup>Department of Preventive Medicine, Korea University College of Medicine, 73 Incheon-ro, Seongbukgu, Seoul 02841, Republic of Korea

Full list of author information is available at the end of the article



beef cattle surveillance included mandatory pre-movement serological testing targeting areas with a high prevalence of bovine cases [13]. The expansion of bovine surveillance was accompanied by a proportionate increase in the depopulation of affected bovine cases, but this did not reduce the incidence of human and bovine brucellosis. Between March and June 2005, routine slaughter-house surveillance and mandatory testing of bulls prior to trade were introduced, which was followed, in June 2006, by the introduction of a mandatory nationwide herd testing of all beef farms with 10 or more heads of cattle [13, 14]. Control measures including removal of infected products and disinfection of facilities have been conducted [15]. Thus, due to the expanded surveillance in 2006, all dairy herds were screened annually using the milk ring test for dairy cattle, and 97% of beef herds were tested by using the serum agglutination test to identify possible *Brucella* infections [16].

While it is well known that the most effective strategy to control human brucellosis is through investments in surveillance and control programs to reduce brucellosis in bovine populations [17, 18], to date, no study has quantified the effect of successive implementation of different surveillance and control strategies of bovine brucellosis on the incidence of human brucellosis over time.

In this study, we aimed to quantify changes in the relationship between incidence of brucellosis in cattle herd and humans for the period between January 2004 and December 2014.

## Methods

### Case definitions

Since 2000, probable cases of human brucellosis have been defined using the following clinical and epidemiological criteria in patients identified at primary care centers and hospitals: (i) experiencing fever, malaise, muscle ache, or sweating and (ii) having occupations that put them at risk of direct contact with potentially infected animals (including farm workers, veterinarians, and abattoir workers). Confirmed cases of human brucellosis were defined as those that meet the definition of a probable case, and also tested positive for *Brucella* sp. on blood culture or antibody tests [19]. In July 2007, a direct polymerase chain reaction (PCR) test or second antibody test to identify the increased levels of antibody were added to the confirmed case definition [20].

For bovine brucellosis, during the study period, confirmed case was defined as cattle within the group of positive result from milk ring test or with positive on Rose Bengal Plate test, and identification of antibodies to *Brucella* sp. by standard tube agglutination test or competitive enzyme-linked immunosorbent assay [21].

### Data for analysis

Since 2000, human brucellosis has been designated as a Korean National Notifiable Infectious Disease, whereby all cases including probable and confirmed cases must be reported to the Korea Centers for Disease Control and Prevention (KCDC) [12]. Monthly reported numbers of cases of brucellosis in humans from physicians and cattle herds from veterinarians were collected from the Database of National Notifiable Infectious Diseases in the KCDC and the Korean Animal Health Integrated System for 11 years between 2004 and 2014 [22, 23]. The incidence of human brucellosis was calculated based on the number of reported human cases in the total population of Korea; and the cattle herd incidence of bovine brucellosis was measured based on the reported infected cattle herd number in the total cattle herd number of Korea during the study period [24].

### Statistical analysis

Considering the progressively improved surveillance of bovine brucellosis and the changes in laboratory criteria for the case definition of confirmed human brucellosis, the study period was divided into four phases comprising three sets of interventions. Phase 1 consisted of region-specific surveillance of beef cattle between January 2004 and March 2005. Phase 2 (June 2005 to June 2006) was considered as the period starting after implementing Intervention 1 which bovine surveillance was extended to slaughter houses and bulls prior to nationwide trade. Phase 3 (July 2006 to June 2007) was the period starting after Intervention 2 which extended surveillance on nationwide beef farms. Phase 4 (July 2007 to December 2014) was the period starting after Intervention 3 which introduced PCR in the diagnostic criteria of confirmed human brucellosis cases.

To identify temporal relationship between the monthly cattle herd incidence of bovine and monthly incidence of human brucellosis (monthly time-series over 132 months), we carried out cross correlation analysis, which generates a series of correlation coefficients between two-time series by shifting the two series temporally over a range of consecutive time lags [25]. This analysis is useful for determining the time lag, and maximizes the power of correlation between the two time-series [26]. For these time series, to remove trend and seasonality, the data are first independently and identically distributed, and subsequently, de-trended by differencing the time series at the degree of one. To examine the differences between before and after implementation of nationwide mandatory surveillance of bovine brucellosis, segmented regression analysis of time-series data from monthly incidence of human brucellosis was used. The trend of the incidence time series (defined as the difference of slope between before and after the intervention)

and level changes in incidence (defined as the difference at the time point of intervention between the observed value and predicted value from pre-intervention time trend) were measured by using the following regression model [27–29]:

$$Y_t = \beta_0 + \beta_1 \times time_t + \beta_2 \times Intervention1_t + \beta_3 \times time\ after\ Intervention1_t + \beta_4 \times Intervention2_t + \beta_5 \times time\ after\ Intervention2_t + \beta_6 \times Intervention3_t + \beta_7 \times time\ after\ Intervention3_t + e_t$$

where,  $Y_t$  is the independent outcome variable of human brucellosis incidence at time  $t$  (the unit of time is the number of months);  $\beta_0$  estimates the baseline level of outcome at the initiation of time series;  $\beta_1$  is the coefficient of  $time_t$ ;  $\beta_2$  estimates the level of change in monthly incidence, where  $Intervention\ 1 = 0$  is before June 2005 and  $Intervention\ 1 = 1$  is after May 2005;  $\beta_3$  estimates the average monthly trend in the post- $Intervention\ 1$  period, where time after  $Intervention\ 1$  is a continuous variable representing the number of months after June 2005 and is coded as zero before March 2005;  $\beta_4$  estimates the change in level of monthly incidence where  $Intervention\ 2 = 0$  is before July 2006 and  $Intervention\ 2 = 1$  is after June 2006;  $\beta_5$  estimates the average monthly trend in the post- $Intervention\ 2$  period, where time after  $Intervention\ 2$  is a continuous variable representing the number of months after May 2006 and is coded as zero before June 2006;  $\beta_6$  estimates the level of change in monthly incidence where  $Intervention\ 3 = 0$  is before July 2007 and  $Intervention\ 3 = 1$  is after June 2007;  $\beta_7$  estimates the average monthly trend in the post- $Intervention\ 3$  period, where time after  $Intervention\ 3$  is a continuous variable representing the number of months after June 2007 and is coded as zero before July 2007; and  $e_t$  is the random effect at  $time_t$ . Durbin-Watson test and analysis of residual plots were performed to identify any autocorrelation in the univariate time series model; this was followed by the application of a generalized least squares first order moving-average process model. The *astsa* package for R version 3.2.4 (R Foundation for Statistical Computing, Vienna, Austria) was used for the time-series analysis [30].

## Results

### Cross correlation between human and bovine brucellosis

Between 2004 and 2014, the incidence of human and the cattle herd incidence of bovine brucellosis increased from January 2005 to July 2006 and decreased thereafter (Fig. 1). During Phase 1 (January 2004 to March 2005), there was no significant cross correlation between cattle

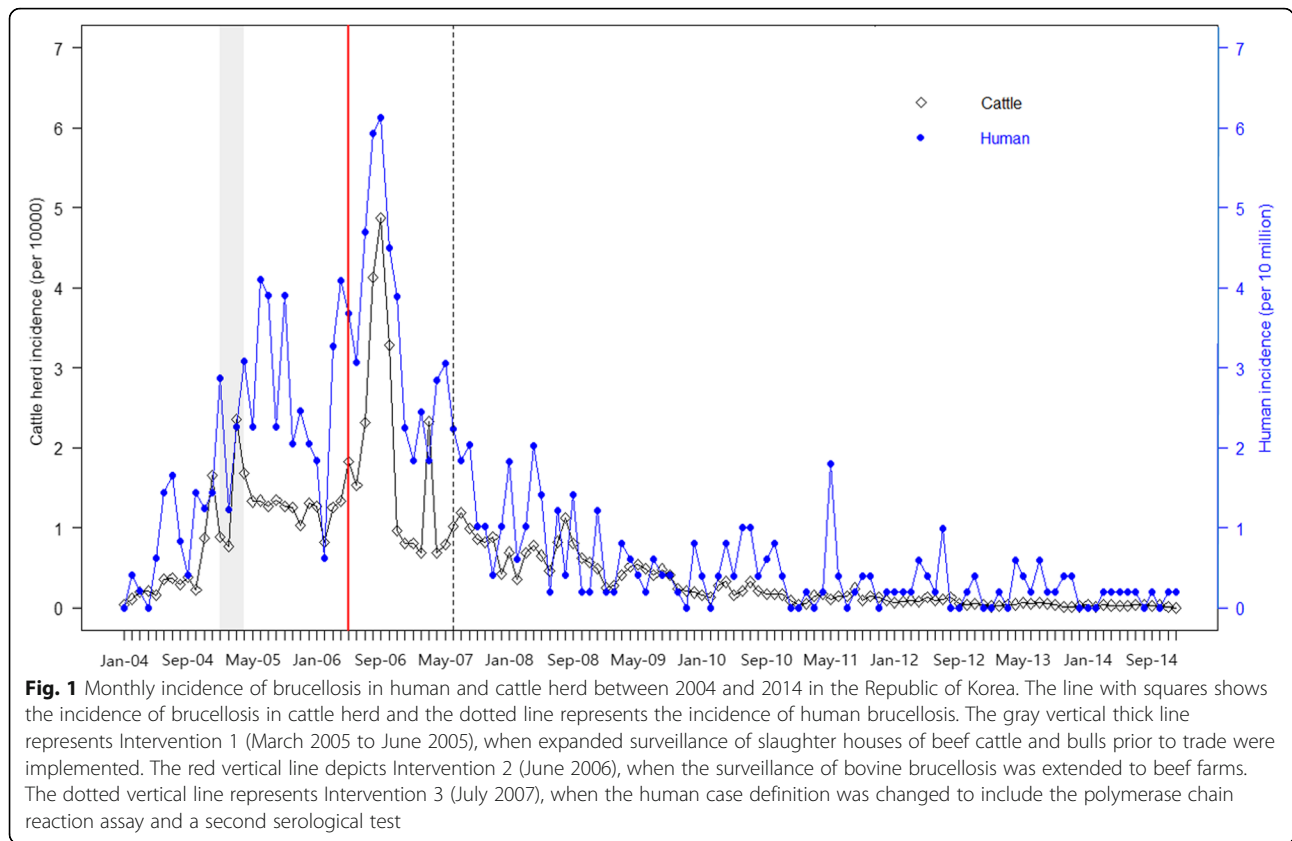
herd incidence of bovine and the incidence of human brucellosis (Fig. 2a). However, during Phase 2 (June 2005 to June 2006), a significant temporal relationship ( $\beta = 0.57$ ,  $p = 0.04$ ) without lag was observed (Fig. 2b). During Phase 3 (July 2006 to June 2007), a significant positive relationship with a 1-month-lag ( $\beta = 0.65$ ,  $p = 0.03$ ) was found (Fig. 2c). During Phase 4 (July 2007 to December 2014), significant positive temporal relationships with a 3-month-lag ( $\beta = 0.35$ ,  $p = 0.01$ ), 0-month-lag ( $\beta = 0.24$ ,  $p = 0.03$ ), and negative temporal relationship with a 1-month lag ( $\beta = 0.23$ ;  $p = 0.03$ ), a 7-month lag ( $\beta = -0.30$ ,  $p = 0.02$ ), and an 8-month lag ( $\beta = 0.23$ ,  $p = 0.03$ ) were identified (Fig. 2d).

### The impact of expanded surveillance of beef cattle on human brucellosis

There was an increase in the trend of incidence (0.14 cases per 10 million people;  $p < 0.01$ ) during Phase 1 (Table. 1). During Phase 2, immediate increase in the incidence level (0.76 per 10 million people;  $p = 0.18$ ) after  $Intervention\ 1$  and decrease in the incidence trend compared with Phase 1 ( $-0.17$  per 10 million people;  $p = 0.03$ ) were identified. During Phase 3, the incidence level was increased (1.94 per 10 million people;  $p < 0.01$ ) immediately after  $Intervention\ 2$  and the trend was decreased ( $-0.19$  per 10 million people;  $p = 0.04$ ). During Phase 4, there was an immediate decrease in the incidence level ( $-1.02$  per 10 million people;  $p = 0.04$ ) after  $Intervention\ 3$  and increasing slope of incidence compared with Phase 3 was identified (0.20 per 10 million people;  $p < 0.01$ ).

## Discussion

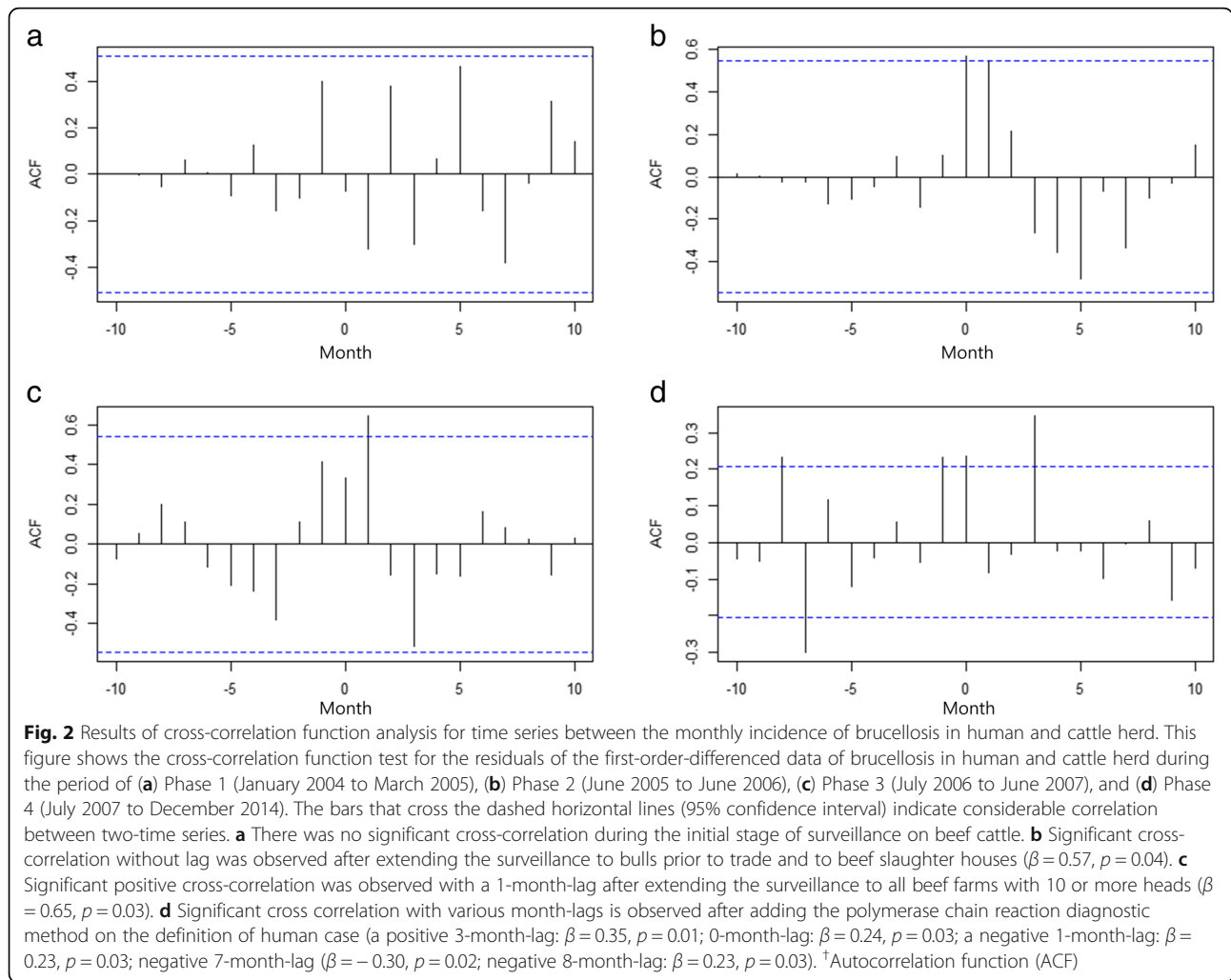
To date there were no published studies documenting this decay and the correlation between the intervention in bovines and the resulting decline in human incidence. Previous studies into human brucellosis in Korea demonstrated a significant linear correlation between yearly incidence of human and bovine brucellosis during the study period (2002–2009; and 2001–2011) [12, 31]. However, considering changes in surveillance and use of yearly incidence data with linear trend, interpretation of results of these previous studies may be limited. In this study, we analyzed the monthly incidence data of human and cattle herd brucellosis notifications, and decomposed the study period into several phases by taking into account successive implementation of enhanced cattle surveillance periods and addition of more sensitive diagnostic criteria of human brucellosis. Overall our study demonstrates that as the surveillance programme for Brucellosis in Korea expanded this was associated with a concomitant decrease in the incidence trend and level of reported human brucellosis infections. These findings have important implications on how brucellosis control



could be designed and operationalized in other endemic countries by demonstrating that the efficacy of progressive expansion of a brucellosis surveillance and control programme in livestock can contribute to a stepwise decrease in human incidence.

In this study, we applied an analytical approach that included a test of cross-correlation and segmented regression analysis enabling an assessment of the strength of association between reported incidence of human and cattle herd incidence of bovine brucellosis and an evaluation of changes in the trend of the incidence of human brucellosis. Our results suggest that there was no significant temporal relationship between the incidence of human and the cattle herd incidence of bovine brucellosis during Phase 1, which can be partially explained by the fact that beef cattle surveillance during that period was primarily region-specific. This indicates that surveillance of bovine brucellosis that focused on dairy cattle and partial surveillance of beef cattle for Phase 1 had limited impact on the reduction of human brucellosis incidence. This is consistent with a previous article demonstrated that surveillance of zoonoses should cover both human and animal populations to increase the probability of early disease detection and for immediate effective prevention and control measures [32].

During Phase 2 (after Intervention 1, when beef cattle surveillance was extended to slaughterhouses and bulls), our results demonstrated a significant temporal correlation between the incidence of human and the cattle herd incidence of bovine brucellosis. This finding is consistent with that from a previous Korean study [33], which found that workers at slaughterhouses and markets of beef by-products were at risk for human brucellosis infection. During this period, a significant decreasing trend in the incidence of human brucellosis was found. This is likely due to the eradication program of bovine brucellosis infected bulls and the trading of brucellosis-negative beef cattle in livestock markets. During Phase 3 (after Intervention 2, where the surveillance extended to all beef farms), we observed a positive temporal correlation with a 1-month lag, indicating that the time series of human incidence is a month behind the incidence of bovine brucellosis. Moreover, an immediate positive level change and decreasing trend in the incidence of human brucellosis were found. It is likely that these results were affected by the proactive nationwide surveillance of beef farms. During Phase 4 (after Intervention 3, which included the addition of PCR in the human diagnostic criteria), several temporal correlations were found at various month lags. In addition, a negative level change and increasing trend compared



**Table 1** Results of segmented regression analysis of human brucellosis by expanded surveillance of bovine brucellosis in beef cattle and adding diagnostic methods for the case definition of human brucellosis

Parameter	Value <sup>a</sup>	95% Confidence Interval	p-value
Pre-intervention phase			
Pre-intervention slope (secular trend, per month)	0.14	0.10 to 0.18	< 0.01
Intervention 1			
Change in level (immediate effect)	0.76	0.20 to 1.32	0.18
Change in slope (gradual effect per month)	-0.17	-0.25 to -0.09	0.03
Intervention 2			
Change in level	1.94	1.40 to 2.53	< 0.01
Change in slope	-0.19	-0.28 to -0.10	0.04
Intervention 3			
Change in level	-1.02	-1.51 to -0.53	0.04
Change in slope	0.20	0.14 to 0.26	< 0.01

<sup>a</sup>Incidence: per 10 million people

with Phase 3 in the incidence of human brucellosis were found. Given that the occurrence of human brucellosis cases should follow that of bovine brucellosis, additional studies are required to understand the conditions that could have contributed to this finding.

During our study period, a number of studies reported that most cattle farmers in Korea were at high risk of exposure of infectious diseases because of inappropriate wear of protective glasses (> 90% in 2006, and 72% in 2013) and apron (91% in 2013) [34, 35]. Furthermore, the number of cattle herds in Korea remained stable between year 2004 (188,987) and year 2010 (176,021) [24]. These findings suggest that the risk of exposure among cattle farmers and the number of cattle herds is likely not to have had a significant impact on the incidence of brucellosis in human and cattle herd.

The findings of the present study need to be interpreted in light of some limitations. First, this was an ecological study that could not measure the causal association between bovine brucellosis prevalence and human brucellosis notifications. However, previous studies in Korea have shown that more proximal factors such as individual-level occupation is a major risk factor of human brucellosis [20]; other studies demonstrated that foodborne exposure to brucella has a role acquiring human brucellosis [4, 5]. Second, based on the case definition, we only considered individuals with human brucellosis-related symptoms, which have led to under-reporting of cases. Furthermore, we measured cattle herd incidence of bovine brucellosis based on the number of reported infected cattle herds which does not reflect the individual incidence level. Third, while interrupted time-series analysis has been regarded as a useful method for the evaluation of public health intervention at a population level [36], this method applied without a suitable comparison group and thereby does not allow the estimation of a causal association between brucellosis interventions and brucellosis incidence. Finally, it is possible that differences in the proportion of probable and confirmed cases of human brucellosis occurred over time after introduction of PCR assay to the case definition of confirmed cases; however, since the KCDC database provided the number of cases as a sum of probable and confirmed cases, it was not possible to ascertain the relative proportions for each of the case definition. Nevertheless, the proportion of probable cases was reported to be approximately 3.6%, and this database is often used as a proxy for measures of the incidence of human brucellosis in Korea [37].

## Conclusions

This study demonstrates that the incidence of human Brucellosis in Korea decreased as the surveillance programme of bovine brucellosis expanded. This finding

indicates that a comprehensive surveillance programme targeting all cattle is required for effective brucellosis morbidity reduction in the human population.

## Additional file

**Additional file 1:** Monthly incidence of brucellosis in human and cattle herd in Korea. The supplementary file provides a dataset of monthly incidence of brucellosis in human and cattle heard in Korea used for assessing the temporal relationship between human and bovine brucellosis and measuring the effect of successive implementation of difference surveillance and control strategies of bovine brucellosis on the incidence of human brucellosis. (CSV 4 kb)

## Abbreviations

KCDC: Korea Centers for Disease Control and Prevention; PCR: Polymerase chain reaction

## Acknowledgements

We would like to thank Mr. Luke Kim, Department of Veterinary Medicine, Chungbuk National University for helping with collection of reported data of bovine brucellosis.

## Funding

RS reports receipt of scholarship from Mogam Science Scholarship Foundation. The funding body has no role in the design of study and collection, analysis, and interpretation of data and in writing the manuscript.

## Availability of data and materials

All data generated or analysed during this study are included in this published article and its Additional file 1.

## Author's contributions

SR was responsible for the design of the study and SR collected and analyzed the data. SR and RJSM prepared the initial draft of the manuscript and revised subsequent versions of the manuscript. SR, RJSM and CBC were responsible for interpretation of the data. All authors contributed to the final version of the manuscript. All authors read and approved the final manuscript.

## Ethics approval and consent to participate

The data analysed in this study does not contain personal information. The institutional review board designated by the Korean Ministry of Health and Welfare waived the requirement for ethical approval (P01–201710–21–008).

## Consent for publication

Not applicable

## Competing interests

The authors declare that they have no competing interests.

## Publisher's Note

Springer Nature remains neutral with regard to jurisdictional claims in published maps and institutional affiliations.

## Author details

<sup>1</sup>Division of Infectious Disease Control, Gyeonggi Provincial Government, Suwon, Republic of Korea. <sup>2</sup>Department of Epidemiology and Health Informatics, Graduate School of Public Health, Korea University, Seoul, Republic of Korea. <sup>3</sup>WHO Collaborating Centre for Infectious Disease Epidemiology and Control, School of Public Health, Li Ka Shing Faculty of Medicine, The University of Hong Kong, Hong Kong, Special Administrative Region, China. <sup>4</sup>UQ Spatial Epidemiology Laboratory, School of Veterinary Science, The University of Queensland, Gatton, Australia. <sup>5</sup>Children's Health and Environment Program, Child Health Research Centre, The University of Queensland, Brisbane, Australia. <sup>6</sup>Department of Preventive Medicine, Korea University College of Medicine, 73 Incheon-ro, Seongbukgu, Seoul 02841, Republic of Korea.

Received: 28 September 2018 Accepted: 15 February 2019

Published online: 28 February 2019

## References

- Dean AS, Crump L, Greter H, Schelling E, Zinsstag J. Global burden of human brucellosis: a systematic review of disease frequency. *PLoS Negl Trop Dis*. 2012;6(10):e1865.
- Dean AS, Crump L, Greter H, Hattendorf J, Schelling E, Zinsstag J. Clinical manifestations of human brucellosis: a systematic review and meta-analysis. *PLoS Negl Trop Dis*. 2012;6(12):e1929.
- Franco MP, Mulder M, Gilman RH, Smits HL. Human brucellosis. *Lancet Infect Dis*. 2007;7:775–864.
- Hald T, Aspinall W, Devleeschauwer B, Cooke R, Corrigan T, Havelaar AH, Gibb HJ, Torgerson PR, Kirk MD, Angulo FJ, et al. World Health Organization estimates of the relative contributions of food to the burden of disease due to selected foodborne hazards: a structured expert elicitation. *PLoS One*. 2016;11:e0145839.
- Hoffmann S, Devleeschauwer B, Aspinall W, Cooke R, Corrigan T, Havelaar A, Angulo F, Gibb H, Kirk M, Lake R, et al. Attribution of global foodborne disease to specific foods: findings from a World Health Organization structured expert elicitation. *PLoS One*. 2017;12:e0183641.
- Kim YS, Sill CY, Oh WS, Kwon KT, Lee H, Lee SH, Son JS, Kim SW, Chang HH, Jung SI, et al. Clinical characteristics of human brucellosis in South Korea. *Infect Chemother*. 2006;38(6):334–43.
- Park MY, Lee CS, Choi YS, Park SJ, Lee JS, Lee HB. A sporadic outbreak of human brucellosis in Korea. *J Korean Med Sci*. 2005;20:941–6.
- Park MS, Woo YS, Lee MJ, Shim SK, Lee HK, Choi YS, Lee WH, Kim KH, Park MY. The first case of human brucellosis in Korea. *Infect Chemother*. 2003;35(6):461–6.
- Lim HS, Min YS, Lee HS. Investigation of series of brucellosis cases in Gyeongsangbuk-do during 2003–2004. *J Prev Med Public Health*. 2005;38:482–8.
- Hur J, Kakoma I, Jeong JM, Lee HJ, Baek BK. Comparison of a new ELISA with other serodiagnostic tests for bovine brucellosis. *Korean J Vet Serv*. 2007;30:385–91.
- Rural Development Administration. Farmer's practices for Brucellosis prevention. Suwon:2011. ([http://www.rda.go.kr/upload/rdatech/lp/file\\_lp\\_014121\\_b0048.pdf](http://www.rda.go.kr/upload/rdatech/lp/file_lp_014121_b0048.pdf)). Accessed 23 Feb 2019.
- Yoon H, Moon OK, Lee SH, Lee WC, Her M, Jeong W, Jung SC, Kim DS. Epidemiology of brucellosis among cattle in Korea from 2001 to 2011. *J Vet Sci*. 2014;15(4):537–43.
- Lee BY, Higgins IM, Moon OK, Clegg TA, McGrath G, Collin DM, Park JY, Yoon HC, Lee SJ, More SJ. Surveillance and control of bovine brucellosis in the Republic of Korea during 2000–2006. *Prev Vet Med*. 2009;90(1–2):66–79.
- Yoon H, Moon OK, Her M, Capenter TE, Kim YJ, Jung S, Lee SJ. Impact of bovine brucellosis eradication programs in the Republic of Korea. *Prev Vet Med*. 2010;95(3–4):288–91.
- Ministry of Government Legislation. Control and prevention measures standard operation protocol of brucellosis and tuberculosis. (<http://www.law.go.kr/LSW/eng/LsSc.do?menuId=2&query=ACT%20ON%20THE%20PREVENTION%20OF%20CONTAGIOUS%20ANIMAL%20DISEASES#liBgcolor0>). Accessed 28 September 2018.
- Lee HS, Moon H, Michael L, George M. Time series analysis of human and bovine brucellosis in South Korea from 2005 to 2010. *Prev Vet med*. 2013;110:190–7.
- Zinsstag J, Schelling E, Roth F, Bonfio B, Savigny D, Tanner M. Human benefits of animal interventions for zoonosis control. *Emerg Infect Dis*. 2007;13:527–31.
- Ducrotot M, Bertu WJ, Matope G, Cadmus S, Conde-Alvarez R, Gusi AM, Welburn S, Ocholi R, Blasco JM, Moriyón I. Brucellosis in sub-saharan Africa: current challenges for management, diagnosis and control. *Acta Trop*. 2017;165:179–93.
- Korea Centers for Disease Control and Prevention. Case definitions for national notifiable infectious diseases. Osong: 2016. ([http://www.cdc.go.kr/CDC/together/CdcKTogether0302.jsp?menuId=HOME001-MNU1154-MNU0004-MNU0088&fid=51&q\\_type=&q\\_value=&cid=66575&pageNum=1](http://www.cdc.go.kr/CDC/together/CdcKTogether0302.jsp?menuId=HOME001-MNU1154-MNU0004-MNU0088&fid=51&q_type=&q_value=&cid=66575&pageNum=1)). Accessed 23 Feb 2019.
- Yoo SJ, Choi YS, Lim HS, Lee K, Park MY, Chu C, Kang YA. Seroprevalence and risk factors of brucellosis among slaughterhouse workers in Korea. *J Prev Med Public Health*. 2009;42(4):237–42.
- Wee SH, Nam HM, Kim CH. Emergence of brucellosis in cattle in the Republic of Korea. *Vet Rec*. 2008;162(17):556–7.
- Disease Web Statistics System, Korea Centers for Disease Control and Prevention. (<http://www.cdc.go.kr/npt/>). Accessed 23 March 2019.
- Korea animal health integrated system, Animal and Plant Quarantine Agency. (<https://www.kahis.go.kr/home/kntscinfo/select.kntsOccrmlist.do>). Accessed 23 September 2019.
- Statistics Korea, Korean statistical information service. (<http://kostat.go.kr/portal/eng/index.action>). Accessed 28 September 2018.
- Chatfield C. The analysis of time series, theory and practice. London: Chapman & Hall press; 1975.
- Akhtar S, Mohammad HG. Time series cross-correlation analysis of HIV seropositivity and pulmonary tuberculosis among migrants entering Kuwait. *Int J Mycobacteriol*. 2012;1(1):29–33.
- Legarde M. How to do (or not to do)... assessing the impact of a policy change with routine longitudinal data. *Health Policy and Plan*. 2011;27(1):76–83.
- Ryu S, Lau CL, Chun BC. The impact of livestock manure control policy on human leptospirosis in Republic of Korea using interrupted time series. *Epidemiol Infect*. 2017;145(7):1320–5.
- Cochrane Effective Practice and Organisation of Care (EPOC). Interrupted time series (ITS) analyses. EPOC Resources for review authors, 2017. (<http://epoc.cochrane.org/epoc-specific-resources-review-authors>). Accessed 19 January 2019.
- Package 'astsa': applied statistical time series analysis. (<https://cran.r-project.org/web/packages/astsa/astsa.pdf>). Accessed 28 September 2018.
- Park SY, Kim TJ, Yoon H, Kim JY, Lee MJ, Lee WC. A retrospective study of the extensive eradication program for brucellosis outbreaks and control in Korea, 2002–2009. *Jpn J Infect Dis*. 2012;65(5):427–9.
- M'ikanatha NM, Lynfield R, Beneden CAV, Valk H. Infectious disease surveillance. 2nd ed. West Sussex, UK: Wiley-Blackwell press; 2013. p. 143–56.
- Jung SJ, Kim SB, Park BW, Jeong HW, Kee SY, Kwon JA, Park MS, Park MY, Cheong HJ, Kim WJ. A case of human brucellosis who had no contact with infected animal: sero-epidemiology study on market, by-product, stock-raising. *Infect Chemother*. 2004;36(3):170–4.
- Korea Centers for Disease Control. Current status of human brucellosis after national survey, 2006. (<http://www.cdc.go.kr/CDC/cms/cmsFileDownload.jsp?fid=31&cid=12256&fieldName=attach1&index=1>). Accessed 28 September 2018.
- Korea Centers for Disease Control. A survey on the status of zoonoses in a livestock farmers, 2013. (<http://www.google.co.uk/url?sa=t&rc=t&url=http%3A%2F%2Fwww.nih.gov%2FCDCC%2FCms%2FCmsFileDownload.jsp%3Ffid%3D3081%26cid%3D25365%26fieldName%3Dattach1%26index%3D1&usq=AOvVaw0GOxsmjKH1mQm3JzXf6oEi>). Accessed 28 September 2018.
- Bernal JL, Cummins S, Gasparrini A. Interrupted time series regression for the evaluation of public health interventions: a tutorial. *Int J Epidemiol*. 2017;46:348–55.
- Choi YS, Lee JS, Park SH, Shim SK, Hwang KJ, Park MY. Current situations of human brucellosis in Korea and research tendency. *Kor J Vet Publ Hlth*. 2007;31:115–21.

**Ready to submit your research? Choose BMC and benefit from:**

- fast, convenient online submission
- thorough peer review by experienced researchers in your field
- rapid publication on acceptance
- support for research data, including large and complex data types
- gold Open Access which fosters wider collaboration and increased citations
- maximum visibility for your research: over 100M website views per year

**At BMC, research is always in progress.**

Learn more [biomedcentral.com/submissions](https://biomedcentral.com/submissions)

