

Research article

Open Access

## Generation of novel high quality HMW-GS genes in two introgression lines of *Triticum aestivum*/*Agropyron elongatum*

Shuwei Liu, Shuangyi Zhao, Fanguo Chen and Guangmin Xia\*

Address: School of Life Sciences, Shandong University, Jinan, 250100, PR China

Email: Shuwei Liu - liushuwei@126.com; Shuangyi Zhao - syzhao@sdu.edu.cn; Fanguo Chen - fanguo2002@sdu.edu.cn; Guangmin Xia\* - xiagm@sdu.edu.cn

\* Corresponding author

Published: 15 May 2007

Received: 12 January 2007

BMC Evolutionary Biology 2007, 7:76 doi:10.1186/1471-2148-7-76

Accepted: 15 May 2007

This article is available from: <http://www.biomedcentral.com/1471-2148/7/76>

© 2007 Liu et al; licensee BioMed Central Ltd.

This is an Open Access article distributed under the terms of the Creative Commons Attribution License (<http://creativecommons.org/licenses/by/2.0>), which permits unrestricted use, distribution, and reproduction in any medium, provided the original work is properly cited.

### Abstract

**Background:** High molecular weight glutenin subunits (HMW-GS) have been proved to be mostly correlated with the processing quality of common wheat (*Triticum aestivum*). But wheat cultivars have limited number of high quality HMW-GS. However, novel HMW-GS were found to be present in many wheat asymmetric somatic hybrid introgression lines of common wheat/*Agropyron elongatum*.

**Results:** To exploit how these new subunits were generated, we isolated HMW-GS genes from two sib hybrid lines (II-12 and II-4-6) and compared them with those from their parents. The result shows that two genes of hybrid (*H11-3-3* and *H11-4-3*) are directly introgressed from the donor parent *Agropyron elongatum*; one hybrid gene (*H1Dx5*) comes from point mutation of a parental wheat gene (*1Dx2.1*); two other hybrid genes (*H1By8* and *H1By16*) are likely resulting from unequal crossover or slippage of a parental wheat gene (*1By9.1*); and the sixth novel hybrid gene (*H1Dy12*) may come from recombination between two parental genes.

**Conclusion:** Therefore, we demonstrate that novel HMW-GS genes can be rapidly created through asymmetric somatic hybridization in a manner similar with the evolution mechanism of these genes supposed before. We also described gene shuffling as a new mechanism of novel HMW-GS gene formation in hybrids. The results suggest that asymmetric somatic hybridization is an important approach for widening HMW-GS genebank of wheat quality improvement.

### Background

High molecular weight glutenin subunits are important component of wheat gluten proteins which are mainly responsible for dough viscosity and elasticity in wheat processing [1]. The HMW-GS accounts for up to about 12% of the total protein in the endosperm of common wheat (*Triticum aestivum* L.), while their allelic variation explains about 45% to 70% of the variation in bread making performance within European wheat cultivars [2-4]. Thus, their coding sequences are the prime candidates for

molecular modification to enhance grain-processing quality [5].

The genes encoding the wheat HMW-GS are located on the long arms of the homoeologous group 1 chromosomes [6-9]. Each locus consists of two tightly linked genes, termed x- and y-type genes according to their different molecular weights. So far, the structural characteristics of more than ten HMW-GS alleles have been revealed by DNA sequencing [10-18]. All of these HMW-GS contain a

central repetitive domain flanked by non-repetitive N- and C-terminal domains. The central domain of both the x- and the y-type subunits comprises hexapeptide and nonapeptide motifs, but the x-type subunits also contain tripeptide motifs. The presence of such a large repetitive central domain probably provides the basis for major and rapid structural changes via duplication and/or deletion of large segments as a result of unequal cross over [19].

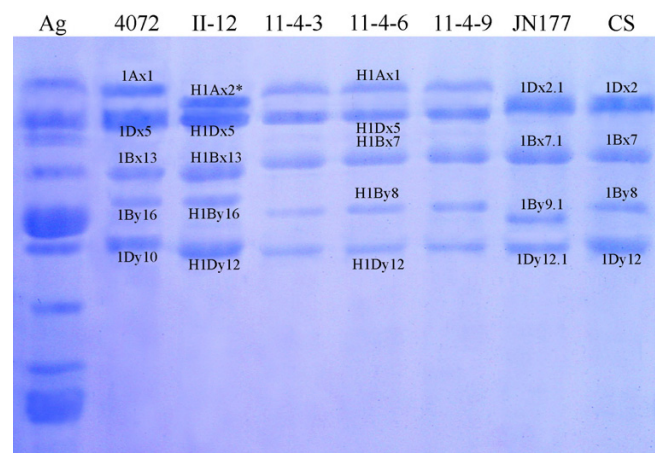
The HMW-GS proteins are important for wheat processing quality; however, the number of HMW-GS alleles with good quality is very limited in wheat cultivars. So, peoples turn to wheat-related grasses for new good quality HMW-GS allele for wheat quality improvement. But many HMW-GS in wheat-related grasses are smaller than those of normal wheat [20-24], while the length of HMW-GS has been proved to be positively correlated with dough strength. Thus, the simple introgression or transformation of HMW-GS from grasses is not sufficient for the wheat quality breeding.

Asymmetric somatic hybridization between protoplast of common wheat (*Triticum aestivum* L cv. Jinan 177) and UV-irradiated protoplast of *Agropyron elongatum* can generate fertile introgression lines with superior agronomic traits, in particular the bread-making quality [25-27]. About 35% of the 175 somatic hybrids express novel high quality HMW-GS subunits not present in Jinan177 (1Bx7.1+1By9.1, 1Dx2.1+1Dy12.1) or both parents [28]. For example, line II-12 has good bread-making quality, and its HMW-GS profile is H1Ax2\*, H1Bx13+H1By16, H1Dx5+H1Dy12 [26]. The identification of the origination of these new subunits will benefit the understanding of the process and guide us to identify and produce more new HMW-GS genes through the somatic hybridization. We speculated the possible formation process of novel genes previously by sequencing the *H1Bx13+H1By16* and *H1Ay* genes of introgression line II-12 [26]. In this report, we isolated and sequenced all the HMW-GS genes of both II-12 and another sib introgression line, which also has a special HMW-GS profile different from Jinan177, and the origination of novel HMW-GS genes in hybrid wheat was discussed.

## Results and discussion

### SDS-PAGE profile of HMW-GS

The SDS-PAGE profile of HMW-GS showed that the parent wheat Jinan177 has the combination of "1Bx7.1+1By9.1; 1Dx2.1+1Dy12.1" while another parent *A. elongatum* contains nine HMW-GS in seeds; the HMW-GS composition of hybrid line II-12 and 11-4-6 appeared to be "H1Ax2\*; H1Bx13+H1By16; H1Dx5+H1Dy12" and "H1Ax1; H1Bx7+H1By8; H1Dx5+H1Dy12" similar to bread wheat, respectively (Figure 1).



**Figure 1**

SDS-PAGE analysis of high-molecular-weight glutenin subunits (HMW-GS) of some common wheats and introgression lines. Seeds of *A. elongatum* contain nine subunits. The HMW-GS composition of different genotypes of common wheat is listed as following: JN177 is 1Bx7.1+1By9.1 and 1Dx2.1+1Dy12.1; CS (Chinese Spring) is 1Bx7+1By8 and 1Dx2+1Dy12; 4072 is 1Ax1, 1Bx13+1By16 and 1Dx5+1Dy10. The HMW-GS composition of hybrid II-12 and 11-4-6 are "H1Ax2\*, H1Bx13+H1By16, H1Dx5+H1Dy12" and "H1Ax1, H1Bx7+H1By8, H1Dx5+H1Dy12" respectively.

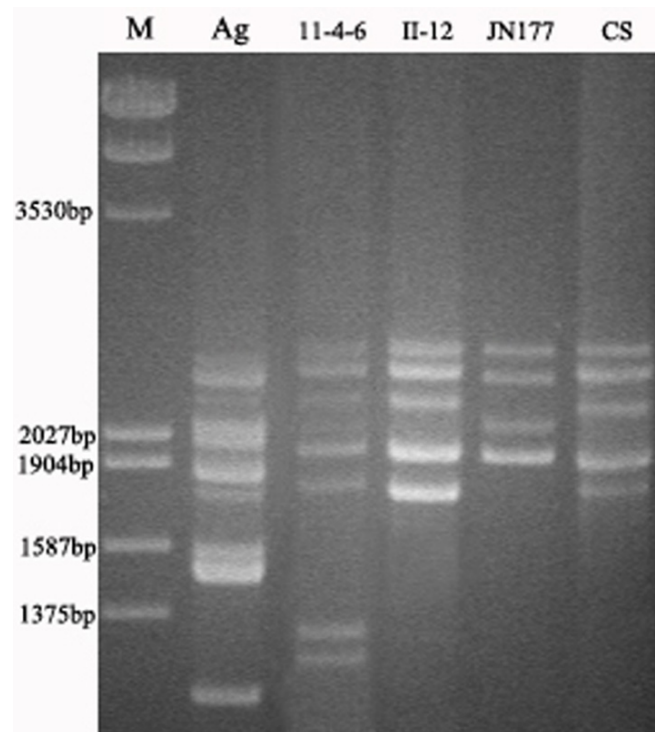
### HMW-GS genes from both parents and two introgression lines

The amplified product of parent wheat Jinan177 and two introgression lines II-12 and 11-4-6 ranged from 1.8 kb to 2.5 kb, but two smaller fragments also appeared in the 11-4-6; the amplicon of another parent *A. elongatum* ranged from 1.1 kb to 2.4 kb (Figure 2). All the amplified products of both parents and the two hybrid lines were cloned and a lot of inserts with different sizes were obtained. After sequencing the terminal region of these inserts we ascertained the identity of these inserts. We selected some inserts to represent the coding region of subunits of parents and the two hybrids, then, we obtained their full length sequences by nested deletion. Through comparison of the mobility of proteins expressed in *E. coli* directed by some sequences with those of subunits in seeds and alignment of these sequences with those published HMW-GS alleles (date not shown) of common wheat, four sequences were designated 1Dx2.1 (GenBank: [DQ478570](#)), 1Bx7.1 (GenBank: [DQ478571](#)), 1By9.1 (GenBank: [DQ000162](#)) and 1Dy12.1 (GenBank: [DQ000161](#)) to represent the ORFs of 1Bx7.1+1By9.1 and 1Dx2.1+1Dy12.1 of parent Jinan177 respectively (Table 1); *H1Dx5* (GenBank: [DQ478572](#)), *H1Dy12* (GenBank: [DQ478573](#)) and *H1By8* (GenBank: [DQ646520](#)) were designated as the coding sequences of H1Dx5+H1Dy12 of II-12 and H1By8 of hybrid 11-4-6, the character H in these

names means that these sequences come from hybrid introgression lines. We also acquired two sequences from hybrid 11-4-6 which were different from any of the four HMW-GS alleles cloned from parent Jinan177 and we named them *H11-3-3* (GenBank: [DQ656419](#)) and *H11-4-3* (GenBank: [DQ646521](#)). However, both of them were very similar to *Aey1* (GenBank: [AY899822](#)) and *Aex4* (GenBank: [DQ534448](#)) cloned from *A. elongatum* respectively. The other two smaller fragments cloned in the amplicon of 11-4-6 were 1333 bp and 1260 bp, respectively. After sequence alignment, we found that they came from deletion of large fragments of *H1By8*. Therefore, we inferred that they were artifacts of PCR amplification and did not select them for further analyzes. There are no corresponding subunits of *H11-3-3* and *H11-4-3* in hybrid 11-4-6. The *H11-3-3* contains in frame stop codon and frame shift mutation in its' ORF, therefore it can not express intact proteins in the seed. The reason why proteins encoded by *H11-4-3* absent from seeds of 11-4-6 is unknown, we suggest that *H11-4-3* was silenced in hybrids via DNA methylation because we have found that about 12% loci of the hybrids were hypermethylated using MSAP platform (Liu et al., personal communication). The other alleles cloned from *A. elongatum* were not shown in this paper. Amino acid sequences derived from all these sequences possessed the characteristic of HMW-GS of bread wheat, with a 21 amino acid residues signal peptide, N- and C-terminal conserved regions and a central repetitive region. The detailed structures of subunits derived from these sequences and some representative subunits of bread wheat were shown in Table 1.

#### **Novel HMW-GS genes from the introgression of donor to receptor**

*H11-3-3* and *H11-4-3* of hybrid wheat 11-4-6 displayed a high similarity with *Aey1* and *Aex4* of *A. elongatum*, but low similarity with all HMW-GS alleles of Jinan177 (Figure 3), which confirmed that these two sequences might be transferred from *A. elongatum* to hybrid wheat genome during somatic hybridization. GISH analysis of hybrid wheat genome in our lab revealed that different hybrid lines had different sites of translocation or insertion of chromatin [29,30]. Wang et al. [31] located introgression small-chromosome-segments of *A. elongatum* on hybrid wheat chromosomes 2AL, 1BL, 5BS, 1DL, 2DL and 6DS, using GISH/FISH/SSR analysis combined with karyotype data. However, there is no direct evidence concerning the hybrid introgression line contains gene from donor on the molecular level. The sequence data of these two genes provided further evidence that asymmetric somatic hybridization can transfer alien gene(s) from donor to the receptor genome, and the potential as a genetic/genomic tool for crop improvements.



**Figure 2**

PCR profile of hybrids and parents DNA amplified with the degenerate primer pairs, CS DNA was used as control and M was Marker (*EcoR I/Hind III*-digested  $\lambda$  DNA).

#### **Novel HMW-GS gene present in hybrid via point mutation of parent gene(s)**

Sequence alignment indicated that H1Dx5 was similar to 1Dx2.1 of parent Jinan177 with 16 amino acid substitutions (Figure 4) and we did not find any sequences similar to H1Dx5 from *A. elongatum*, so we confirmed that H1Dx5 of hybrid came from 1Dx2.1 of parent wheat via point mutation in the process of hybridization. Both H1Dx5 and 1Dx2.1 shows more similarity to 1Dx2 (GenBank: [X03346](#)) than 1Dx5 (GenBank: [X12928](#)) of bread wheat. However, they do not share the position 60 amino acid deletion characteristic of subunit 1Dx2. Bacterial expression of modified ORFs of *H1Dx5* and *1Dx2.1* confirmed that they are coding sequences of H1Dx5 and 1Dx2.1 respectively (data not shown). Although molecular weights of deduced amino acids of H1Dx5 and 1Dx2.1 are similar, the migration of these two subunits on SDS-PAGE is obviously different (Figure 1). The reason of such anomaly is not known. However, it has been reported that the migrations of allelic subunit pair 1Dx2/1Dx5 and 1Dy10/1Dy12 was anomalous, subunit 1Dx5 has a higher mobility than the smaller allelic 1Dx2, and similarly, 1Dy10 has a lower mobility than the larger allelic 1Dy12 [32]. Through Urea SDS-PAGE and making chimeric genes, Goldsbrough et al. [33] found that the anomaly of

**Table 1: A summary of some of the properties of the primary structure of deduced peptides of hybrids and both parents and that of some representative subunits of bread wheat**

Subunits	Accession number	Signal peptide	N-terminus domain	C-terminus domain	Repetitive domain	Total
1Dx2.1	<a href="#">DQ478570</a>	21	89	42	687	839
H1Dx5	<a href="#">DQ478572</a>	21	89	42	687	839
1Dx2	<a href="#">X03346</a>	21	88	42	687	838
1Dx5	<a href="#">X12928</a>	21	89	42	687	839
1Dy12.1	<a href="#">DQ000161</a>	21	104	42	491	658
H1Dy12	<a href="#">DQ478573</a>	21	104	42	491	658
Aey2	<a href="#">AY263343</a>	21	104	42	491	658
1Dy12	<a href="#">X03041</a>	21	104	42	493	660
1Bx7.1	<a href="#">DQ478571</a>	21	81	42	645	789
H1Bx13	<a href="#">AY424400</a>	21	81	42	651	795
1Bx7	<a href="#">X13927</a>	21	81	42	645	789
1By9.1	<a href="#">DQ000162</a>	21	104	42	538	705
H1By8	<a href="#">DQ646520</a>	21	104	42	553	720
H1By16	<a href="#">AY263346</a>	21	104	42	571	738
1By9	<a href="#">X61026</a>	21	104	42	538	705
1By8	<a href="#">AY245797</a>	21	104	42	553	720
H11-4-3	<a href="#">DQ646521</a>	21	81	42	548	692
Aex4	<a href="#">DQ534448</a>	21	81	42	548	692

migration on SDS-PAGE between 1Dy10 and 1Dy12 might be resulted from conformational differences induced by six amino acid substitution between the two subunits. Urea SDS-PAGE of recovered H1Dx5 and 1Dx2.1 proteins showed that the two subunits appeared nearly the same electrophoretic mobility in presence of urea where secondary structure of these proteins is broken down and the proteins are separated according to their relative molecular weight (data not shown). Bread making-quality analysis showed that hybrid-derived H1Dx5 subunit was related to good grain-processing quality, while 1Dx2.1 subunit was correlated with bad ones [27]. Therefore, we speculated that the same conformational difference was responsible for both the observed grain-processing quality differences and the anomalous electrophoretic behavior.

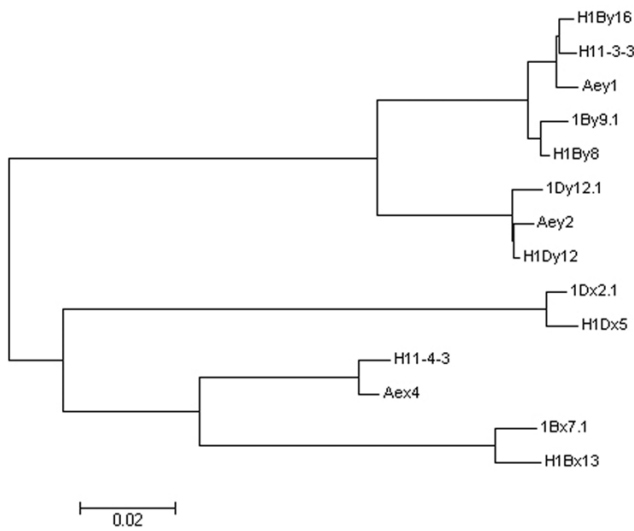
#### **Hybrid novel gene from allelic variation of parents via unequal crossover or slippage**

Sequence alignment indicated that *H1By16* (GenBank: [AY263346](#), cloned by Feng et al. [26]) and *H1By8* were very similar with *1By9.1* except the addition of repeat motifs and few SNPs. *H1By8* contains an additional block of repeat than *1By9.1* while *H1By16* contains another repeat than *H1By8* (Figure 5). Although *H1By16* shows more similarity with *Aey1*, the latter has a single base deletion which results in a frame shift mutation, so *H1By16* might not be acquired from *A. elongatum*. *H1By8* and *H1By16* should be formed by unequal crossover or slippage of *1By9.1* to duplicate block of repeats. This is coincident with variation of SSR loci in hybrids. There present obvious variation in band pattern of some SSR loci between hybrid and parents using 173 primer pairs.

Sequencing of some novel bands indicates that the variation of band pattern is mainly due to the addition or deletion of one or more repeat motifs (data not shown). Addition or deletion of repeat motifs maybe an effective mechanism of variation happened in sequences that contain many repeat motifs in them.

#### **Shuffling of parents genes to produce novel chimeric HMW-GS genes**

The coding sequence of *H1Dy12* shows very high similarity with that of *1Dy12.1*, with only a few SNPs, both of them are 1980 bp in length. The 1980 bp's long y-type sequence cloned from *A. elongatum* (*Aey2*, GenBank: [AY263343](#)[21]) makes us a little doubt about the origin of *H1Dy12* of hybrid II-12. The three highly homologous 1980 bp sequences (*1Dy12.1*, *H1Dy12* and *Aey2*) contain 22 different SNPs in all. Sequence alignment reveals that 7 of 10 discrepant bases before position 1210 are the same between *1Dy12.1* and *H1Dy12*, while 9 of another 12 discrepant bases after position 1210 are the same between *H1Dy12* and *Aey2* (Figure 6). Therefore we conclude that the *H1Dy12* of hybrid is likely a chimeric gene generated by recombination between *1Dy12.1* and *Aey2* (Figure 7). This is coincident with LMW-GS genes found in another sib hybrid wheat introgression line 7-4-1-2 in our lab. Chen et al. cloned and sequenced LMW-GS genes from the line and both parents, and found some chimeric genes (Chen, personal communication). As for the 6 bases that were different between *H1Dy12* and corresponding parent genes, they might be the result of single base mutation during the process of UV-irradiation to the donor in the asymmetric somatic hybridization of the parent wheat and *A. elongatum* [25] and long-term tissue culture of par-

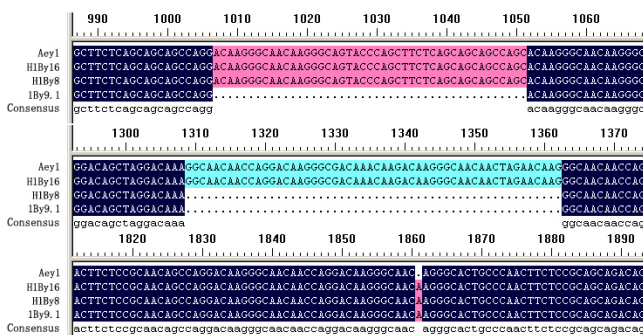


**Figure 3**  
Phylogenetic analysis of HMW-GS genes cloned from hybrids and both parents. The Neighbor-Joining tree is constructed through MEGA program (Version 3.1).

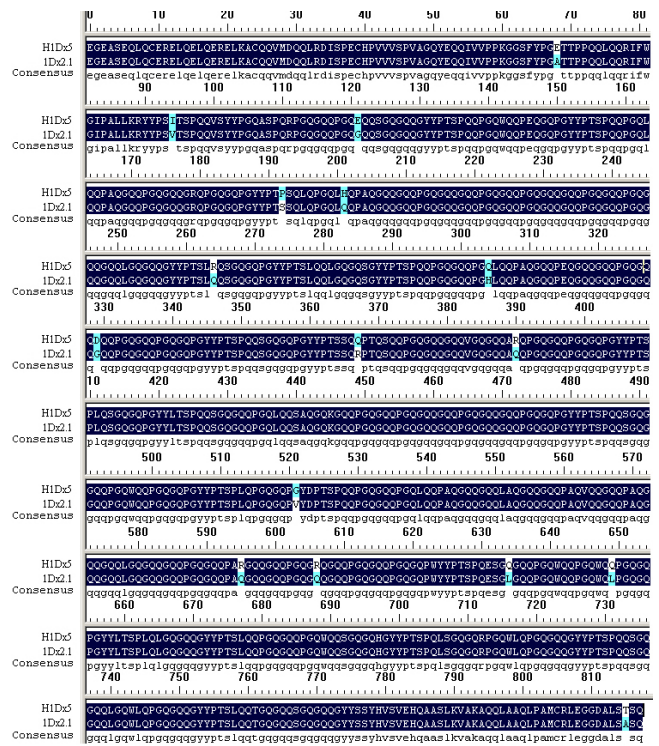
ents/hybrids before or after the cell fusion, just like that happened in H1Dx5.

**Comparison of new gene generation from intergeneric hybridization with natural HMW-GS gene evolution**

From evolutionary view, it was suggested that the evolutionary origin of HMW-GS involved a same ancestor [8,12,14,34]. Anderson and Greene [14] proposed a simplest mechanism about the sequence evolution of HMW-GS genes, which include: (a) single base changes (b) deletions or additions within a repeat (c) single repeat changes (d) deletions or duplications of blocks of repeats. Through cloning and sequencing of HMW-GS genes of the



**Figure 5**  
Comparison of part DNA sequences from repetitive domain of three 1By alleles and a y-type allele Aey1 of *A. elongatum*. H1By16 and H1By8 is the coding sequence of novel subunit of hybrid; 1By9.1 is the coding sequence of 1By9.1 subunit of common wheat Jinan177.

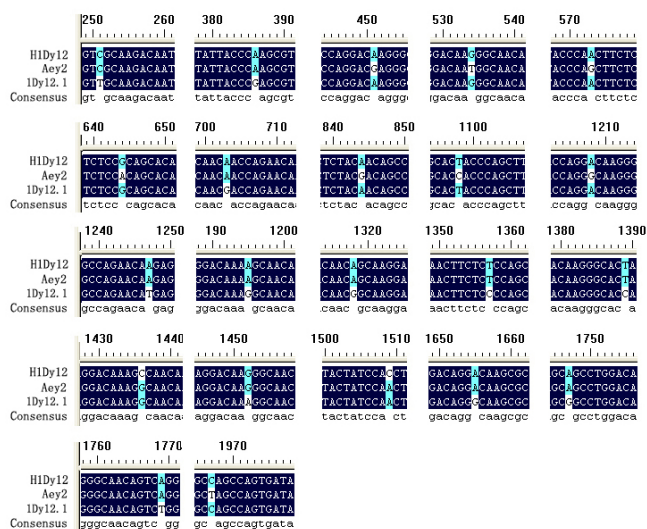


**Figure 4**  
Comparison of mature peptide sequences deduced from DNA sequences of H1Dx5 and 1Dx2.1.

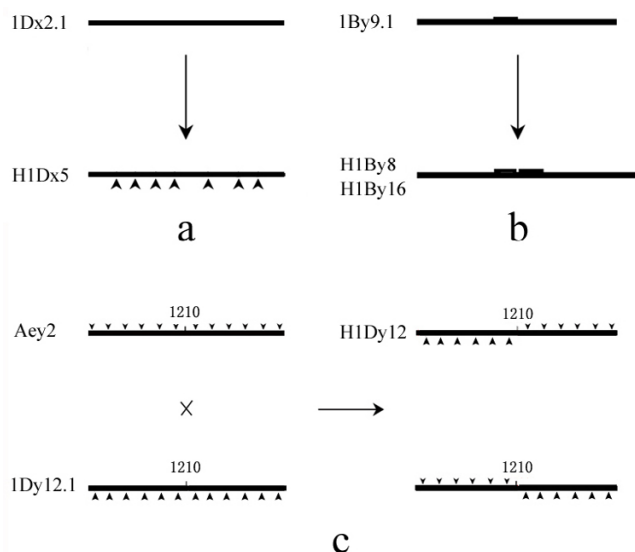
sib hybrid lines and both parents, we found that asymmetric somatic hybridization could not only transfer donor genes to the hybrid genome, but also lead to the emergence of new genes (Figure 7). The formation of some novel hybrid genes was inoculated with the mechanism mentioned by Anderson and Greene [14]. Moreover, we found gene shuffling in hybrid can also produce novel HMW-GS gene, just like that happened in the origination of some novel genes in *Drosophila* [35-37]. Thus, the novel HMW-GS and combinations generated in the sib asymmetric somatic hybrid lines from a same fusion cell are similar to the natural emergence of new HMW-GS but in less time.

**The novel HMW-GS with wheat quality breeding**

In our investigation, many hybrid-derived novel HMW-GS show correlation with good grain-processing quality, such as H1Bx13+H1By16, H1Dx5+H1Dy12 and H1By8 subunits (GenBank: [AY424400](#), [AY263346](#), [DQ478572](#), [DQ478573](#) and [DQ646520](#) respectively) in II-12 and other sib lines [27]. We are using them in gene transformation and marker-assistant quality breeding of common wheat, and a lot of germplasm and strains with high qualities have been produced from them. Therefore, asymmetric somatic hybridization between common



**Figure 6**  
Comparison of peptide sequences deduced from three 1980 bp DNA sequences: *HDy12*, *Aey2* and *IDy12.1*. Seven of 10 discrepant bases before position 1210 are the same between *IDy12.1* and *HDy12*, while 9 of another 12 discrepant bases after position 1210 are the same between *HDy12* and *Aey2*.



**Figure 7**  
Sketch map of possible pathway through which novel hybrid HMW-GS genes come from, a): *HDx5* come from *IDx2.1* via single base mutation, the arrow means the SNPs. b): *H1By8* and *H1By16* of hybrid generate from duplication of a block of repeats of *IBy9.1*. c): *HDy12* of hybrid engender from recombination between *Aey2* of *A. elongatum* and *IDy12.1* of parent wheat Jinan177.

wheat and relative intergeneric grasses can be an important tool for wheat quality breeding.

**Conclusion**

Through sequencing and comparing HMW-GS genes from introgression lines of wheat/*A. elongatum* and both parents, we confirmed that genes of *A. elongatum* had been introgressed into wheat in asymmetric somatic hybridization. It is significant that some novel HMW-GS genes with good processing quality could be generated in the introgression lines via the asymmetric somatic hybridization. The formation of these novel genes showed similarity to the evolutionary mechanism of natural HMW-GS genes proposed before, except that gene shuffling was found to be a special mode to form novel chimeric genes in the hybrid lines. The result suggests that asymmetric somatic hybridization is a unique pathway to produce novel genes that can be used for wheat quality improvement.

**Methods**

**Plant materials**

*Agropyron elongatum* (Host) Nevski [*Thinopyrum ponticum* 2n = 10x = 70], common wheat Jinan 177 (*Triticum aestivum* L. 2n = 42), the introgression self-fertilized lines II-12 and 11-4 originated from a single fusion cell in the intergeneric asymmetric somatic hybridization between protoplasts of *T. aestivum* cv. Jinan177 and UV-irradiated protoplasts from *A. elongatum* were used in the experi-

ments. II-12 is genetically stable and has the HMW-GS profile of H1Ax2\*, H1Bx13+H1By16, H1Dx5+H1Dy12. Line 11-4 segregates in F<sub>2</sub> generation with different HMW-GS, so a single seed selection (11-4-6) with the profile H1Ax1; H1Bx7+H1By8 and H1Dx5+H1Dy12 similar to common wheat was used to represent this genotype. Common wheat Chinese Spring (1Bx7+1By8, 1Dx2+1Dy12) and wheat cultivar 4072 (1Ax1, 1Bx13+1By16, 1Dx5+1Dy10), used for control, was kindly offered by Shandong Academy of Agricultural Sciences, Jinan, China.

**SDS-PAGE analysis of HMW-GS**

HMW-GS of parent Jinan177 and hybrid lines II-12 as well as 11-4 was extracted from embryo-less half grains while those of *A. elongatum*, Chinese Spring and 4072 was extracted from the whole seeds as described by Mackie et al. [38]. SDS-PAGE was conducted following the procedures described by Feng et al. [20].

**Cloning and characterizing of HMW-GS genes**

The seedlings of *A. elongatum* and that of embryo-carrying half seeds of Jinan177 and both introgression lines were grown in darkness for 14 days at 23°C. Genomic DNA was extracted from these seedlings using the CTAB method according to Murray and Thompson [39]. As the HMW-GS genes are free of introns, genomic DNA is used

as template for PCR amplification of the entire coding region. In order to amplify the complete HMW-GS ORF of the two introgression lines and the two parents, a pair of degenerate primers was designed based on published DNA sequences. These were P1 (5'-ATGGCTAAGCGGC/TTA/GGTCCTCTTTG-3') and P2 (5'-CTATCACTGGCTA/GGCCGACAATGCG-3'). P1 includes the HMW-GS ORF start codon, and P2 has the two conserved tandem stop codons. The PCR required LA Taq polymerase (TaKaRa Biotechnology) with a GC buffer for GC-rich template. The amplification profile was one cycle at 95 °C for 5 min, followed by 28 cycles of 94 °C for 40 s, 68 °C for 4 min, and a final extension step at 72 °C for 7 min. The amplified product were recovered from 1.0% agarose gels, cloned into the pUCm-T vector, and transformed into *E. coli* DH10B competent cells. To obtain a full-length sequence, a series of five to six subclones were prepared using the nested deletion method of Sambrook et al. [40]. Sequencing was performed commercially (Invitrogen). Both amplification and cloning were repeated at least three times to minimize the possibility of errors present in amplification and sequencing. Sequence analyses were performed with the help of MEGA (Version 3.1) and programs from the NCBI and EBI networks.

### Authors' contributions

Shuwei Liu made substantial contribution to acquisition and analysis of data and drafting of the manuscript.

Shuangyi Zhao and Fanguo Chen made contribution to design of the work and analysis of the data. Both of them reviewed the manuscript.

Guangmin Xia has made substantial contribution to design of the work and revising the manuscript critically.

### Acknowledgements

This work was supported by Projects of Key and Doctor Position of ministry of education and National 863 High Technology Research and Development Project No.2006AA100102.

### References

- Shewry PR, Halford NG, Tatham AS, Popineau Y, Lafandra D, Belton PS: **The high molecular weight subunits of wheat glutenin and their role in determining wheat processing properties.** *Adv Food Nutr Res* 2003, **45**:219-302.
- Branlard G, Dardevet M: **Diversity of grain protein and bread wheat quality. II. Correlation between high molecular weight subunits of glutenin and flour quality characteristics.** *J Cereal Sci* 1985, **3**:345-354.
- Payne PI, Nightingale MA, Krattiger AF, Holt LM: **The relationship between HMW glutenin subunit composition and the bread-making quality of British grown wheat varieties.** *J Sci Food Agric* 1987, **40**:51-65.
- Payne PI, Holt LM, Krattiger AF, Carrillo JM: **Relationship between seed quality characteristics and HMW glutenin subunit composition determined using wheats grown in Spain.** *J Cereal Sci* 1988, **7**:229-235.
- Shewry PR, Tatham AS, Fido R, Jones H, Barcelo P, Lazzeri PA: **Improving the end use properties of wheat by manipulating the grain protein composition.** *Euphytica* 2001, **119**:45-48.
- Lawrence GJ, Shepherd KW: **Variation in glutenin protein subunits of wheat.** *Aust J Biol Sci* 1980, **33**:221-233.
- Payne PI, Law CN, Mudd EE: **Control by homoeologous group I chromosomes of the high-molecular-weight subunits of glutenin, a major protein of wheat endosperm.** *Theor Appl Genet* 1980, **58**:113-120.
- Lawrence GJ, Shepherd KW: **Inheritance of glutenin protein subunits of wheat.** *Theor Appl Genet* 1981, **60**:333-337.
- Payne PI, Holt LM, Worland AJ, Law CN: **Structural and genetical studies on the high-molecular-weight subunits of wheat glutenin. Part 3. Telocentric mapping of the subunit genes on the long arms of the homoeologous group I chromosomes.** *Theor Appl Genet* 1982, **63**:129-138.
- Forde J, Malpica J-M, Halford NG, Shewry PR, Anderson OD, Greene FC, Mifflin BJ: **The nucleotide sequence of a HMW glutenin subunit gene located on chromosome 1A of wheat (*Triticum aestivum* L.).** *Nucleic Acids Res* 1985, **13**:6817-6832.
- Sugiyama T, Rafalski A, Peterson D, Söll D: **A wheat HMW glutenin subunit gene reveals a highly repeated structure.** *Nucleic Acids Res* 1985, **13**:8729-8737.
- Thompson RD, Bartels D, Harberd NP: **Nucleotide sequence of a gene from chromosome 1D of wheat encoding a HMW-glutenin subunit.** *Nucleic Acids Res* 1985, **13**:6833-6846.
- Halford NG, Forde J, Anderson OD, Greene FC, Shewry PR: **The nucleotide and deduced amino acid sequences of an HMW glutenin subunit gene from chromosome 1B of bread wheat (*Triticum aestivum* L.) and comparison with those of genes from chromosomes 1A and 1D.** *Theor Appl Genet* 1987, **75**:117-126.
- Anderson OD, Greene FC: **The characterization and comparative analysis of high-molecular-weight glutenin genes from genomes A and B of a hexaploid bread wheat.** *Theor Appl Genet* 1989, **77**:689-700.
- Anderson OD, Greene FC, Yip RE, Halford NG, Shewry PR, Malpica-Romero J-M: **Nucleotide sequences of the two high-molecular-weight glutenin genes from the D-genome of a hexaploid bread wheat, *Triticum aestivum* L. cv Cheyenne.** *Nucleic Acids Res* 1989, **17**:461-462.
- Halford NG, Field JM, Blair H, Urwin P, Moore K, Robert L, Thompson R, Flavell RB, Tatham AS, Shewry PR: **Analysis of HMW glutenin subunits encoded by chromosome 1A of bread wheat (*Triticum aestivum* L.) indicates quantitative effects on grain quality.** *Theor Appl Genet* 1992, **83**(3):373-378.
- Reddy P, Appels R: **Analysis of a genomic DNA segment carrying the wheat high-molecular-weight (HMW) glutenin Bx17 subunit and its use as an RFLP marker.** *Theor Appl Genet* 1993, **85**:616-624.
- Wan Y, Wang D, Shewry PR, Halford NG: **Isolation and characterization of five novel high molecular weight subunit of glutenin genes from *Triticum timopheevi* and *Aegilops cylindrica*.** *Theor Appl Genet* 2002, **104**:828-839.
- Shewry PR, Halford NG, Tatham AS: **The high molecular weight subunits of wheat, barley and rye: genetics, molecular biology, chemistry and role in wheat gluten structure and functionality.** *Oxford Surveys of Plant Molec Cell Biol* 1989, **6**:163-219.
- Feng DS, Chen FG, Zhao SY, Xia GM: **High-molecular weight glutenin subunit genes in decaploid *Agropyron elongatum*.** *Acta Bot Sin* 2004, **46**:489-496.
- Feng DS, Chen FG, Zhao SY, Xia GM: **Study on a novel HMW glutenin subunit coding region from *Agropyron elongatum* (in Chinese with English Abstract).** *Acta Bot Boreal - Occident Sin* 2004, **24**:237-242.
- Wang JR, Yan ZH, Wei YM, Zheng YL: **A novel high-molecular-weight glutenin subunit gene *Eel1.5* from *Elytrigia elongata* (Host) Nevski.** *J Cereal Sci* 2004, **40**:289-294.
- Guo ZF, Yan ZH, Wang JR, Wei YM, Zheng YL: **Characterization of HMW prolamines and their coding sequences from *Crithopsis delileana*.** *Hereditas* 2005, **142**:56-64.
- Wang JR, Yan ZH, Wei YM, Zheng YL: **Characterization of high-molecular-weight glutenin subunit genes from *Elytrigia elongata*.** *Plant Breeding* 2006, **125**:89-95.
- Xia GM, Xiang FN, Zhou AF, Wang H, Chen HM: **Asymmetric somatic hybridization between wheat (*Triticum aestivum* L.) and *Agropyron elongatum* (Host) Nevishi.** *Theor Appl Genet* 2003, **107**:299-305.

26. Feng DS, Xia GM, Zhao SY, Chen FG: **Two quality-associated HMW glutenin subunits in a somatic hybrid line between *Triticum aestivum* and *Agropyron elongatum*.** *Theor Appl Genet* 2004, **110**:136-144.
27. Liu H, Shi L, Zhao JS, Xia GM: **Genetic characteristic of high molecular weight glutenin subunits in somatic hybrid wheat lines – potential application to wheat breeding.** *J Agric Food Chem* 2006, **54**:5007-5013.
28. Zhao TJ, Quan TY, Xia GM, Chen HM: **Glutenin and SDS sedimentation analysis of the F<sub>5</sub> somatic hybrids between *Triticum aestivum* L. and *Agropyron elongatum* (in Chinese with English Abstract).** *J Shandong Univ (Nat Sci)* 2003, **38**(3):112-116.
29. Chen SY, Liu SW, Xu CH, Chen YZ, Xia GM: **Heredity of chloroplast and nuclear genomes of asymmetric somatic hybrid lines between wheat and couch grass.** *Acta Bot Sin* 2004, **46**:110-115.
30. Wang J, Xiang FN, Xia GM, Chen HM: **Transfer of small chromosome fragments of *Agropyron elongatum* to wheat chromosome via asymmetric somatic hybridization.** *Sci China Ser C* 2004, **47**(5):434-441.
31. Wang J, Xiang FN, Xia GM: ***Agropyron elongatum* chromatin localization on the wheat chromosomes in an introgression line.** *Planta* 2005, **221**:277-286.
32. Greene FC, Anderson OD, Yip RE, Halford NG, Malpica-Romero J-M, Shewry PR: **Analysis of possible quality related sequence variations in the 1D glutenin high-molecular-weight subunit genes of wheat.** *Proc 7th Int Wheat Genet Symp, IPSR, Cambridge* 1988:735-740.
33. Goldsbrough AP, Bulleid NJ, Freedmen RB, Flavell RB: **Conformational differences between two wheat (*Triticum aestivum*) 'high-molecular-weight' glutenin subunits are due to a short region containing six amino acid differences.** *Biochem J* 1989, **263**:837-842.
34. Shewry PR, Napier JA, Tatham AS: **Seed storage proteins: structure and biosynthesis.** *The Plant Cell* 1995, **7**:945-956.
35. Wang W, Zhang J, Alvarez C, Llopart A, Long M: **The origin of the *jingwei* gene and the complex modular structure of its parental gene, *yellow emperor*, in *Drosophila melanogaster*.** *Mol Biol Evol* 2000, **17**:1294-1301.
36. Wang W, Brunet FG, Nevo E, Long M: **Origin of *sphinx*, a young chimeric RNA gene in *Drosophila melanogaster*.** *Proc Natl Acad Sci USA* 2002, **99**:4448-4453.
37. Arguello JR, Chen Y, Yang S, Wang W, Long M: **Origination of an X-linked testes chimeric gene by illegitimate recombination in *Drosophila*.** *PLoS Genetics* 2006, **2**(5):e77.
38. Mackie AM, Lagudah ES, Sharp PJ, Lafiandra D: **Molecular and biochemical characterization of HMW glutenin subunits from *T. tauschii* and the D genome of hexaploid wheat.** *J Cereal Sci* 1996, **23**:213-225.
39. Murray MG, Thompson WF: **Rapid isolation of high molecular weight plant DNA.** *Nucleic Acids Res* 1980, **8**:4321-4325.
40. Sambrook J, Fritsch EF, Maniatis T: **Molecular cloning: a laboratory manual.** Cold Spring Harbor Laboratory Press, New York; 1989.

Publish with **BioMed Central** and every scientist can read your work free of charge

"BioMed Central will be the most significant development for disseminating the results of biomedical research in our lifetime."

Sir Paul Nurse, Cancer Research UK

Your research papers will be:

- available free of charge to the entire biomedical community
- peer reviewed and published immediately upon acceptance
- cited in PubMed and archived on PubMed Central
- yours — you keep the copyright

Submit your manuscript here:  
[http://www.biomedcentral.com/info/publishing\\_adv.asp](http://www.biomedcentral.com/info/publishing_adv.asp)

