







Systematic review and meta analysis

A systematic review and meta-analysis to inform cancer screening guidelines in idiopathic inflammatory myopathies

Alexander G. S. Oldroyd ^{1,2,3,4}, Andrew B. Allard⁵, Jeffrey P. Callen⁶, Hector Chinoy ^{1,2,4}, Lorinda Chung^{7,8}, David Fiorentino⁹, Michael D. George^{10,11}, Patrick Gordon¹², Kate Kolstad⁹, Drew J. B. Kurtzman¹³, Pedro M. Machado ^{14,15,16}, Neil J. McHugh ¹⁷, Anna Postolova¹⁸, Albert Selva-O'Callaghan¹⁹, Jens Schmidt²⁰, Sarah Tansley ^{5,20}, Ruth Ann Vleugels^{21,22}, Victoria P. Werth^{23,24} and Rohit Aggarwal ²⁵

Abstract

Objectives. To identify clinical factors associated with cancer risk in the idiopathic inflammatory myopathies (IIMs) and to systematically review the existing evidence related to cancer screening.

Methods. A systematic literature search was carried out on Medline, Embase and Scopus. Cancer risk within the IIM population (i.e. not compared with the general population) was expressed as risk ratios (RR) for binary variables and weighted mean differences (WMD) for continuous variables. Evidence relating to cancer screening practices in the IIMs were synthesized via narrative review.

Results. Sixty-nine studies were included in the meta-analysis. DM subtype (RR 2.21), older age (WMD 11.19), male sex (RR 1.53), dysphagia (RR 2.09), cutaneous ulceration (RR 2.73) and anti-transcriptional intermediary factor-1 gamma positivity (RR 4.66) were identified as being associated with significantly increased risk of cancer. PM (RR 0.49) and clinically amyopathic DM (RR 0.44) subtypes, Raynaud's phenomenon (RR 0.61), interstitial lung disease (RR 0.49), very high serum creatine kinase (WMD –1189.96) or lactate dehydrogenase (WMD –336.52) levels, and anti-Jo1 (RR 0.45) or anti-EJ (RR 0.17) positivity were identified as being associated with significantly reduced risk of cancer. Nine studies relating to IIM-specific cancer screening were included. CT scanning of the thorax, abdomen and pelvis appeared to be effective in identifying underlying asymptomatic cancers.

Conclusion. Cancer risk factors should be evaluated in patients with IIM for risk stratification. Screening evidence is limited but CT scanning could be useful. Prospective studies and consensus guidelines are needed to establish cancer screening strategies in IIM patients.

¹National Institute for Health Research Manchester Biomedical Research Centre, Manchester University NHS Foundation Trust, ²Centre for Musculoskeletal Research, University of Manchester, Manchester Academic Health Science Centre, ³Centre for Epidemiology Versus Arthritis, University of Manchester, Manchester, ⁴Department of Rheumatology, Salford Royal NHS Foundation Trust, Salford, ⁵Royal National Hospital for Rheumatic Diseases, Royal United Hospitals Bath NHS Foundation Trust, Bath, UK, ⁶Division of Medicine, Department of Medicine, University of Louisville, Louisville, KY, ⁷Division of Immunology and Rheumatology, Department of Medicine and Dermatology, Stanford University, Stanford, ⁸Palo Alto Health Care System, Palo Alto, ⁹Department of Dermatology, School of Medicine, Stanford University, Stanford, CA, ¹⁰Division of Rheumatology, ¹¹Division of Epidemiology, University of Pennsylvania, Philadelphia, PA, USA, ¹²Department of Rheumatology, King's College Hospital NHS Foundation Trust, London, UK, ¹³Department of Dermatology, Wright State University, Dayton, OH, USA, ¹⁴Centre for Rheumatology and Department of Neuromuscular Diseases, University College London, ¹⁵National Institute for Health Research University College London Hospitals Biomedical Research Centre, University College London Hospitals NHS Trust, ¹⁶Department of Rheumatology, Northwick Park Hospital, London North West University Healthcare NHS Trust, London, ¹⁷Department of Pharmacy and Pharmacology, University of Bath, Bath, UK, ¹⁸Department of Immunology and Rheumatology, Stanford Health Care, Stanford, CA, USA, ¹⁹Systemic Autoimmune Unity, Vall D'Hebron General Hospital, Universitat Autònoma de Barcelona, Barcelona, Spain, ²⁰Department of Neurology, Neuromuscular Centre, Göttingen, Germany, ²¹Harvard Medical School, ²²Department of Dermatology, Brigham and Women's Hospital, Boston, MA, ²³Department of Dermatology, University of Pennsylvania, ²⁴Division of Dermatology, Corporal Michael J. Crescenz VA Medical Center, Philadelphia and ²⁵Division of Rheumatology and Clinical Immunology, Department of Medicine, University of Pittsburgh, Pittsburgh, PA, USA

Submitted 4 December 2020; accepted 11 February 2021

Correspondence to: Rohit Aggarwal, Division of Rheumatology and Clinical Immunology, Arthritis and Autoimmunity Center (Falk), UPMC Myositis Center, University of Pittsburgh, 3500 Terrace Street, BST S 700, Pittsburgh, PA, USA. E-mail: aggarwalr@upmc.edu

Key words: myositis, muscle, autoantibodies, CT scanning, neoplasia, epidemiology, meta-analysis

Rheumatology key messages

- IIM cancer risk factors include dermatomyositis, older age, male sex, dysphagia, cutaneous ulceration and anti-TIF1 γ .
- Cancer screening evidence is limited but CT scans may be useful.
- Findings from this study can inform IIM-specific cancer screening guidelines.

Introduction

Idiopathic inflammatory myopathies (IIMs) are chronic multisystem autoimmune conditions that may cause muscle inflammation (myositis), skin manifestations and interstitial lung disease (ILD) [1, 2]. Adult-onset IIMs are associated with increased risk of cancer. A recent meta-analysis of such studies reported a standardized incidence ratio of 4.66 for DM and 1.75 for PM [3]. The generally accepted definition of cancer associated myositis (CAM) is malignancy within 3 years of IIM onset. Cancer remains the leading cause of death for adults with IIM [4–6].

Around one in four patients are diagnosed with cancer within 3 years before or after IIM onset [4]; however, risk varies according to the presence/absence of certain factors [7]. Unfortunately, the data regarding risk factors are largely derived from retrospective studies with small populations, thus limiting the ability to form robust conclusions and extrapolate to the wider population.

Meta-analysis of existing evidence could synthesize results across studies and identify factors associated with cancer in IIM populations, thus potentially accounting for biases, such as publication bias and outlier studies. Further, assimilation of evidence relating to cancer screening specific to CAM could provide an evidence base informing clinical screening practices and facilitate the formulation of cancer screening guidelines.

The International Myositis Assessment and Clinical Studies Group (IMACS), the largest international group for scientific studies in myositis, began a special interest group to develop evidence-based cancer screening guidelines for newly diagnosed IIM patients. This meta-analysis forms an important component in guideline formation. Therefore, the overall aim of this study is to identify risk factors associated with CAM using meta-analysis, and to systematically review existing evidence relating to CAM screening approaches.

Methods

We performed a systematic review of factors associated with cancer in IIM populations and screening practices. Evidence pertaining to factors associated with cancer were assimilated via meta-analysis. Results of studies relating to cancer screening in IIM populations were

assimilated into a narrative review. Study selection, data extraction, quality assessment, data synthesis and analysis were all carried out in adherence to PRISMA guidelines (for PRISMA checklist see [Supplementary Material](#), available at *Rheumatology* online) [8].

Data sources

A systematic literature search was carried out on Medline via PubMed, Embase via OVID and Scopus. The following were used to identify appropriate studies: ‘myositis’, ‘neoplasm’, ‘screening’. Full-length peer reviewed articles published in English language before 8 January 2020 were included. Case reports, letters and conference abstracts were excluded. References of each identified study were also examined for further appropriate studies.

Study selection

Studies were included in the risk factor meta-analysis if they provided data on at least one risk factor, included at least 10 IIM study subjects, and provided data on an IIM control group. It is important to note that risk factors were assessed in comparison to each study’s wider IIM population, not the general healthy population. Eligible IIM subtypes included DM, PM, anti-synthetase syndrome (ASS), immune-mediated necrotizing myopathy (IMNM) and clinically amyopathic DM (CADM). Data relating to inclusion body myositis were excluded due to the relationship with cancer being distinct from that of other IIM subtypes [4]. Only the study with the largest cohort was included where repeated studies utilized the same cohort data, where identifiable.

For the review of screening practices, studies that assessed at least one cancer screening approach/modality in an IIM population were included.

Data extraction

Each eligible article was independently reviewed by two reviewers (A.O., M.D.G., D.K., S.T., A.A., A.P. and K.K.). The title and study abstracts were reviewed to assess eligibility/ineligibility. Preliminary full text reviews were carried out where eligibility/ineligibility could not be decided using the title and abstract alone. Full text review of each eligible article was carried out by a single reviewer. Extracted data included study type, population

studied, sample size, risk factors evaluated, number of cases (i.e. those with risk factors), controls (i.e. those without risk factors), and number of cases and controls diagnosed with cancer (excluding non-melanotic skin cancers). Available data (e.g. mean, s.d., median, range) on continuous risk factors, such as age, in those with/without cancer were also collected. A second reviewer reviewed selected studies to ensure accuracy of data extraction. The quality of studies and bias assessment was carried out using the GRADE system developed by the Scottish Intercollegiate Guidelines Network, where each study was given a quality assessment of either very low, low, moderate or high [9]. Studies were excluded if they were deemed to be of low or very low quality or subject to a high risk of bias according to the GRADE system. Agreement of both reviewers was required to remove a study according to bias. The decision of study inclusion/exclusion was made by a third reviewer in the case of differing assessments.

Data synthesis and analysis

Meta-analysis was carried out for each risk factor where data from at least two eligible studies were available. Investigated factors included IIM subtypes, demographics, clinical features, laboratory parameters and autoantibodies. The denominator used in cancer risk estimation for each factor was the remaining IIM population of each study, not the general population. The cancer risk associated with individual ASS-related autoantibodies (anti-Jo1, anti-PL7, anti-PL12, anti-EJ, anti-OJ, anti-KS) was considered. Subsequently, the risk associated with the presence of any ASS-related autoantibody was calculated by combining studies that compared risk against non-ASS IIM controls. Risk ratios (RRs) were calculated for binary variables (e.g. presence of ILD). The weighted mean difference (WMD) for each continuous variable (e.g. age) was calculated by comparing means and s.d.s. The mean (s.d.) was calculated from studies that reported only median and range using methods described by Hozo *et al.* [10].

The small number of studies that reported the utility of cancer screening approaches in IIM populations precluded a meta-analysis, therefore a narrative review was carried out.

Heterogeneity and study sample size analysis

Heterogeneity was assessed using the standard chi-squared test and I^2 statistic. Further analysis was carried out for factors with very high levels of heterogeneity ($I^2 > 75\%$). Influence analysis ('leave-one-out') was carried out to identify outlier studies, that is those with extreme effect sizes, and thus substantially contributing to heterogeneity. A study was considered an outlier if it fulfilled the cut-off criteria proposed by Viechtbauer *et al.* [11].

Egger's test was used to assess the influence of study cohort size on calculated effect sizes [12]. 'Trim and fill' was used to calculate adjusted effect sizes for

factors with significant (<0.05) Egger's test P -values [13].

All analysis was carried out using the statistical programme R [14], and the meta [15] and metaphor [16] packages.

Results

A total of 7030 articles were initially identified via the literature search and 141 were reviewed for eligibility following removal of ineligible papers, duplicates, case reports and reviews (Fig. 1). Sixty-seven studies were included in the risk factor meta-analysis (Fig. 1) and nine in the screening narrative review (two studies were included in both the meta-analysis and systematic review). Table 1 displays the summary RRs and WMDs calculated for each risk factor. See Supplementary Material for forest plots for each risk factor and further details of each study (Supplementary Table 1, available at *Rheumatology* online).

IIM subtypes

DM was significantly associated with a higher risk of cancer compared with other IIM subtypes [17–40]. PM [17–28, 30, 31, 33–40] and CADM [28, 35, 41] were found to be associated with significantly lower risk for cancer compared with remaining IIM subtypes. ASS subtype was a non-significant factor; however, data from only two eligible studies were available [21, 42]. Insufficient data were available to perform meta-analysis on data relating to IMNM.

Clinical factors including demographics and laboratory values

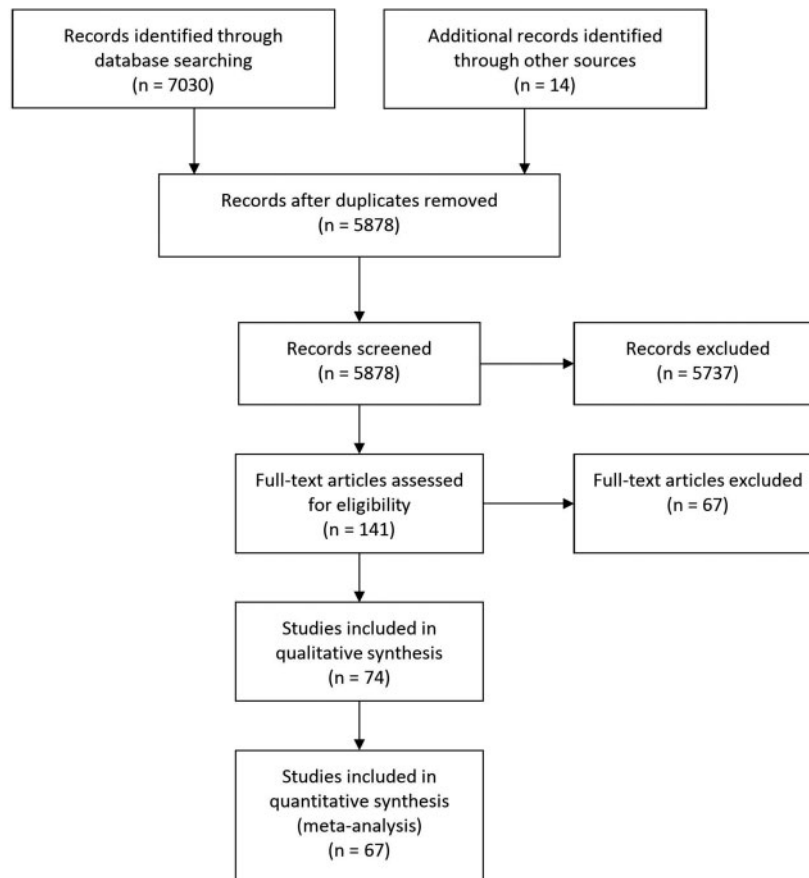
Demographics

Older age at time of IIM onset was found to be significantly associated with increased risk of cancer [21, 22, 28, 29, 32, 33, 36, 39, 42–54]. The mean age of IIM onset in cancer cases was 59 years, compared with 49 years in the non-cancer cases. Male sex was found to be significantly associated with higher risk of cancer, compared with female sex [17, 18, 21, 22, 25–30, 32–34, 36, 38, 39, 41–59].

Clinical risk factors

Sufficient data were available to quantify the cancer risks associated with dysphagia, cutaneous ulceration, Raynaud's phenomenon and ILD. Dysphagia, which was typically not objectively defined across the majority of studies, was significantly associated with higher risk of cancer [22, 25, 26, 29, 32, 33, 39, 43, 46, 47, 49, 56, 59, 60]. Cutaneous ulceration was also significantly associated with higher risk of cancer [45, 46, 49, 50, 53]. Analysis revealed that the presence of Raynaud's phenomenon was associated with a significantly lower risk of cancer [22, 25, 26, 29, 30, 39, 41, 45, 46, 50, 59]. The presence of ILD, which was typically diagnosed via CT scanning, was also associated with a significantly lower

Fig. 1 PRISMA flow diagram



risk of cancer [22, 26, 28–30, 32, 33, 35, 39, 43, 45, 46, 56, 59].

Laboratory values

Lower creatine kinase (CK) [22, 27, 29, 32, 33, 38, 39, 43, 46, 53] values were significantly associated with increased cancer risk, therefore, conversely, very high values were associated with lower risk of cancer. It is important to note, however, that the mean CK level in cancer cases (2402 IU/l) was still raised compared with normal values, but lower than the non-cancer group (3557 IU/l). Similarly, lower lactate dehydrogenase (LDH) [22, 32, 33, 38, 39, 46, 53] values (mean LDH 766 U/l) were found to be associated with increased cancer risk as compared with higher LDH values (mean LDH 1078 U/l). Both alanine transaminase (ALT) [29, 38, 53] and ESR [22, 29, 33, 38, 43, 45] levels were found to be non-significant factors, and insufficient data were available for aspartate aminotransferase and aldolase.

Autoantibodies

Anti-transcriptional intermediary factor-1 gamma (anti-TIF1 γ) positivity was significantly associated with increased cancer risk [21, 31, 37, 41, 44, 48, 58, 60–71]. Anti-nuclear matrix protein 2 (anti-NXP2) positivity was a

non-significant factor [21, 37, 61, 62, 68, 71–76]. Large proportions of the control cohorts in studies of anti-NXP2-positive cohorts were comprised of anti-TIF1 γ -positive cases. We repeated meta-analysis after removing anti-TIF1 γ -positive cases. The RR of anti-NXP2 using data from six studies with anti-TIF1 γ cases excluded was 1.47 [95% confidence interval (CI): 0.57, 3.80; I^2 0.00%], again indicating that positivity for anti-NXP2 is a non-significant factor for cancer relative to other autoantibody subtypes [21, 37, 62, 68, 71, 73].

Analysis was carried out for each individual ASS-related autoantibody. Anti-Jo-1 [21, 22, 25, 26, 29, 33, 46, 59, 62, 71, 77] and anti-EJ [21, 62, 71, 78, 79] were significantly associated with reduced cancer risk. Positivity for anti-PL7 [21, 62, 71, 78, 79], anti-PL12 [21, 62, 71, 78, 79], anti-OJ [21, 71, 78, 79] and anti-KS [71, 79] were non-significant factors, although limited by small number of studies. Analysis revealed that the presence of any ASS-related autoantibody was significantly associated with lower risk of cancer [21, 22, 25, 26, 29, 33, 59, 62, 70, 71].

Positivity for other autoantibodies, including anti-3-hydroxy 3-methylglutaryl coenzyme A reductase (anti-HMGCR) [21, 62, 71, 80, 81], anti-signal recognition

TABLE 1 Meta-analysis results, including calculated effect sizes, heterogeneity and publication bias for each factor

Domain	Factor	RR/WMD (95% CI)	GRADE certainty rating ^a	Heterogeneity	Egger's test, P-value	
P-value	I^2 , %					
Subtype ^b	DM	2.21 (1.78, 2.77)	Moderate	0.134	24.8	0.162
	PM	0.49 (0.37, 0.65)	Moderate	0.061	34.0	0.603
	CADM	0.44 (0.20, 0.97)	Low	0.751	0.0	—
	ASS	0.28 (0.00, 6554.79)	Low	0.017	82.4	—
Demographics	Age	11.19 (9.29, 13.08)	High	0.001	56.1	0.859
	Male sex	1.53 (1.34, 1.75)	High	0.101	24.2	0.081
Clinical features	Dysphagia	2.09 (1.21, 3.60)	High	<0.0001	83.6	0.310
	Cutaneous ulceration	2.73 (1.33, 5.59)	Moderate	0.389	3.1	—
	Raynaud's phenomenon	0.61 (0.39, 0.95)	Moderate	0.698	0.0	0.055
Blood parameters	ILD	0.49 (0.32, 0.76)	High	0.011	52.3	0.381
	CK	-1189.96 (-2132.74, -247.18)	Moderate	<0.0001	84.5	0.182
	LDH	-336.52 (-514.40, -158.64)	Moderate	0.093	44.8	—
	ALT	36.29 (-313.18, 385.77)	Low	0.001	85.5	—
Autoantibodies	ESR	4.4 (-6.2, 14.9)	Low	0.028	60.2	—
	Anti-TIF1 γ	4.68 (3.37, 6.48)	High	<0.0001	68.8	0.543
	Anti-NXP2	1.16 (0.73, 1.87)	Moderate	0.278	17.4	0.271
	Anti-c	1.59 (0.33, 7.74)	Low	0.217	34.5	—
	Anti-HMGCR	0.55 (0.19, 1.61)	Low	0.277	21.6	—
	Anti-MDA5	0.17 (0.02, 1.28)	Low	0.457	0.0	—
	Anti-Mi2	1.05 (0.28, 3.92)	Low	0.381	5.6	—
	Anti-SRP	0.40 (0.14, 1.21)	Low	0.790	0.0	—
	Any ASS antibody	0.41 (0.26, 0.64)	High	0.746	0.0	<0.001
	Anti-Jo1	0.45 (0.25, 0.84)	High	0.700	0.0	0.051
	Anti-PL7	0.68 (0.15, 3.07)	Low	0.541	0.0	—
	Anti-PL12	1.59 (0.89, 2.86)	Low	0.789	0.0	—
	Anti-EJ	0.17 (0.07, 0.44)	Low	0.964	0.0	—
	Anti-OJ	1.56 (0.68, 3.52)	Low	0.870	0.0	—
Anti-KS	1.23 (0.05, 30.12)	Very low	0.717	0.0	—	
MSA negative	0.89 (0.50, 1.59)	Low	0.073	50.4	—	
ANA positivity	0.91 (0.58, 1.41)	Low	<0.0001	75.0	0.113	

^aGrading of Recommendations, Assessment, Development and Evaluations certainty rating: very low (the true effect is probably markedly different from the estimated effect), low (the true effect might be markedly different from the estimated effect), moderate (the authors believe that the true effect is probably close to the estimated effect), and high (the authors have a lot of confidence that the true effect is similar to the estimated effect). ^bThe risk of cancer for each IIM subtype is estimated against each study's wider IIM population, not the general population. ALT: alanine transaminase; ASS: anti-synthetase syndrome; CADM: clinically amyopathic dermatomyositis; CI: confidence interval; CK: creatine kinase; DM: dermatomyositis; HMGCR: 3-hydroxy 3-methylglutaryl coenzyme A reductase; ILD: interstitial lung disease; LDH: lactate dehydrogenase; MDA5: melanoma differentiation-associated gene 5; MSA: myositis specific autoantibody; NXP2: nuclear matrix protein 2; RR: risk ratio; SAE1: small ubiquitin-like modifier-1 activating enzyme; SRP: signal recognition particle; TIF1 γ : transcriptional intermediary factor-1 gamma; WMD: weighted mean difference.

particle (anti-SRP) [62, 71, 80], anti-small ubiquitin-like modifier-1 activating enzyme (anti-SAE1) [21, 62, 71], anti-melanoma differentiation-associated gene 5 (anti-MDA5) [21, 44, 48, 62, 71] or anti-Mi2 [21, 41, 58, 62, 64, 71], were identified as non-significant factors for cancer. Both myositis specific autoantibody (MSA) negativity [21, 30, 45, 62, 71] and ANA positivity [22, 26, 28, 30, 39, 41, 43, 46, 50, 53, 54, 56, 82] were non-significant factors.

Heterogeneity and publication bias

Table 1 displays the standard chi-squared test results and I^2 statistic for heterogeneity of each analysed factor. Influence analysis aimed to identify outlier studies for risk factors with very high (>75%) heterogeneity. One

study each fulfilled the outlier criteria for CK [53], ESR [45] and ALT [53]. Adjusted WMD after removal of data from outlier publication was calculated and did not change overall relationships (Supplementary Table 2, available at *Rheumatology* online).

Significant publication bias was observed with 'any ASS-antibody'. Adjusted RR following 'trim and fill' analysis with six added studies was 0.46 (95% CI: 0.23, 0.93).

Cancer screening utility review

Nine studies [40, 45, 83–89] relating to utility of cancer screening approaches in IIM populations were identified. Table 2 displays the details of each study. A total of 90 cancers were identified via screening across 1033

TABLE 2 Details of identified studies reporting utility of cancer screening investigations in IIM populations

Study	Country	Study type	IIM subtypes included	Population size	Screening modality assessed	Timing of screening	No. cancer cases identified	Control modality	No. cancer cases identified	Comments
Kidambi et al. [83]	USA	Retrospective	DM	79 in total Upper GI endoscopy 47 Lower GI endoscopy 67	Upper and lower GI endoscopy	Mean 6.8 years (s.d. 6.6) after DM onset	0 2 cases of Barrett's oesophagus 10 adenoma	NA	NA	
Mailha et al. [84]	Canada	Retrospective	DM 31, PM 1, overlap 25, IBM 1, orbital 1, unspecified subtype 4	63	¹⁸ F-FDG PET/CT	'Average' time of 9 months after IIM diagnosis	0	'Conventional', physical and gynaecological examination, CBC, serum biochemistry, LFTs, serum protein electrophoresis, urinalysis, CXR, gastroscopy, colonoscopy, CT of thorax, abdomen and pelvis, mammography, endovaginal USS, serum tumour markers	3	¹⁸ F-FDG PET/CT lead to more biopsies compared with conventional screening (8 vs 5) breast cancer via mammography, squamous cell carcinoma via examination, multiple myeloma via blood tests
Leatham et al. [85]	USA	Retrospective	DM	400		Median 4.2 years (IQR 1.7–8.0.6) between symptom onset and screening	29 cancers across 27 patients diagnosed after DM onset 17 cancers (16 patients) diagnosed by blind screening	NA	NA	2 cancers (breast cancer and DLBCL) were diagnosed via repeat 'blind screening'. Increasing age was only identified cancer risk factor.
Huang et al. [86]	China	Retrospective	DM and PM	129 PM 30, DM 99	WBMRI	Mean disease duration 30.8 months (s.d. 47.9, range	5, all DM 3 NPC 1 ovarian 1 thyroid cancer	NA	NA	

(continued)

TABLE 2 Continued

Study	Country	Study type	IIM subtypes included	Population size	Screening modality assessed	Timing of screening	No. cancer cases identified	Control modality	No. cancer cases identified	Comments
Whitmore <i>et al.</i> [87]	USA	Retrospective	DM	14	Serum CA-125	10 days to 19 years) Median disease duration 15.5 months (range 7–24)	4 ovarian cancer	NA	NA	Pre-diagnosis serum CA-125 levels were found to be higher in 2 (50%) of ovarian cancer cases. Normal serum CA-125 levels were seen in all controls.
Sparsa <i>et al.</i> [45]	France	Retrospective	DM and PM	40	History, physical and pelvic examination, CBC, ESR, general chemistry screen, LFTs, CXR, mammography, CT TAP, upper and lower GI endoscopy, 'small bowel radiologic examination', thyroid imaging, MRI, PET-CT, cancer-associated antigens, bone marrow biopsy, laparotomy	Not reported for whole cohort Screening occurred between 12 months prior to and 8 months after IIM onset in cancer cases	Total 122 investigations, 30 revealed malignancy 35 tests were 'directed', 19 (54%) were positive 87 tests were 'blind', 11 (13%) were positive	NA	NA	CT TAP revealed most 'blind' screening cancers - 5/18 (28%) were positive
Selva-O'Callaghan <i>et al.</i> [88]	Spain	Prospective	49 DM, 6 PM	55	¹⁸ F-FDG PET/CT	Within 6 months period after IIM diagnosis	Positive in 7 cases (1 false-positive), negative in 44 cases (3 false-negatives) and inconclusive in 4 cases	CT abdomen and pelvis, mammography, gynaecologic examination, ovarian USS, tumour markers (CA-125, CA-19.9, CEA, PSA)	Positive in 9 cases (2 false-positive) 5 breast, 1 lung, 1 pancreas, 1 vagina, 1 colon Negative in 46 cases (2 false-negatives)	¹⁸ F-FDG PET/CT PPV was 86%, NPV was 94%
Amoura <i>et al.</i> [89]	France	Retrospective	50 DM, 52 PM	102	CEA > 5 ng/ml CA15-3 > 25 units/ml	Not reported	CEA increased in 4 patients, no cancer diagnoses	NA	NA	

(continued)

TABLE 2 Continued

Study	Country	Study type	IIM subtypes included	Population size	Screening modality assessed	Timing of screening	No. cancer cases identified	Control modality	No. cancer cases identified	Comments
Lim <i>et al.</i> [40]	Taiwan	Retrospective	98 DM, 53 PM	152	CA19-9 > 37 units/ml CA125 > 35 units/ml	Mean 6.1 years (s.d. 5.7) after IIM onset	CA15-3 increased in 22, 2 cancer diagnoses CA19-9 increased in 11 patients, 3 cancer diagnoses CA125 increased in 8 patients, 5 cancer diagnoses CA19-9 and CA125 were both increased in 3 patients, all 3 were diagnosed with cancer CA15-3 increased in 9 patients, no cancer diagnoses CA125 increased in 18 patients, 1 cancer diagnosis CA19-9 increased in 10, 1 cancer diagnosis AFP increased in 4, no cancer diagnoses CEA increased in 8, 3 cancer diagnoses			8 (89%) of the 9 with elevated CA15-3 levels developed ILD

¹⁸F-FDG PET/CT: ¹⁸F-fluorodeoxyglucose PET/CT; AFP: alpha fetoprotein; CA: carbohydrate antigen; CBC: complete blood count; CEA: carcinoembryonic antigen; CT TAP: computed tomography thorax, abdomen and pelvis; CXR: chest X-ray radiograph; DLBCL: diffuse large B cell lymphoma; GI: gastrointestinal; IIM: idiopathic inflammatory myopathy; ILD: interstitial lung disease; IQR: interquartile range; LFT: liver function tests; NA: not applicable; NPC: nasopharyngeal carcinoma; NPV: negative predictive value; PPV: positive predictive value; PSA: prostate-specific antigen; USS: ultrasound scan; WBMRI: whole body magnetic resonance imaging.

patients. Studies were carried out across a number of countries, including the USA, Canada, Taiwan, China, France and Spain, and widely ranging intervals between IIM onset/diagnosis and screening were reported. All but one study was retrospective. Study population sizes ranged between 14 and 400. A wide variety of cancers were diagnosed, including but not limited to breast cancer, squamous cell carcinoma, multiple myeloma, ovarian cancer, lymphoma, lung cancer and oesophageal cancer.

The utility of 'blind screening' (i.e. investigations carried out in the absence of target symptoms) was reported by Leatham *et al.* [85] and Sparsa *et al.* [45]. Leatham *et al.* identified 17 out of 48 cancer patients diagnosed with cancer via blind screening modalities after DM onset. CT scanning of the thorax, abdomen or pelvis detected the most cancer diagnoses (6/17, 38%), followed by mammography (3/17, 18%). Sparsa *et al.* reported the identification of 30 cancers via 122 investigations. Thirty-five investigations were 'directed' (i.e. initiated due to the presence of target symptoms) and resulted in the identification of 19 (54%) cancers. In contrast, 87 investigations were blind and identified 11 (13%) cancers. Again, CT scanning of the thorax, abdomen and pelvis was the single investigation that detected the most cancers (5/18, 28%).

The utility of ^{18}F -FDG PET/CT was reported by Maliha *et al.* [84] and Selva-O'Callaghan *et al.* [88]. Maliha *et al.* reported that fluorodeoxyglucose (^{18}F -FDG) PET/CT scans revealed no further cancer diagnoses and actually lead to more biopsies, compared with 'conventional' screening (see Table 2 for details). Similarly, Selva-O'Callaghan reported that single ^{18}F -FDG PET/CT scans were comparable to a large number of conventional screening investigations, which included complete physical examination, laboratory tests (complete blood count and serum chemistry panel), thoraco-abdominal CT scan, tumour markers [carbohydrate antigen-125 (CA125), CA19-9, carcinoembryonic antigen (CEA), prostate-specific antigen], gynaecological examination, ovarian ultrasonography and mammography.

The screening utility of CA125 was demonstrated by Amoura *et al.* [89] and Whitmore *et al.* [87]. Amoura *et al.* demonstrated that increased levels were significantly associated with subsequent cancer diagnoses (OR 29.7; 95% CI: 8.2, 106.6; P -value <0.0001). Whitmore *et al.* also demonstrated the utility of normal values—no study participant with normal CA125 levels was subsequently diagnosed with cancer during the study period. In contrast, Lim *et al.* concluded that CA125 testing was not useful for detection of cancer [40]. Eighteen participants had raised CA125 levels and only one (6%) was subsequently diagnosed with cancer. Additionally, 53 participants had normal CA125 levels and two (4%) were diagnosed with cancer.

Both Amoura *et al.* [89] and Lim *et al.* [40] reported the screening utility of CEA, CA15-3 and CA19-9 (Table 2). Raised CEA or CA15-3 levels were not associated with cancer in each study. Raised CA19-9 levels

were significantly associated with cancer in the study by Amoura *et al.*; 11 cases had raised levels and three subsequently developed cancer (OR 4.5; 95% CI: 1.00, 18.7; P -value 0.018). Raised CA19-9 levels were not found to be associated with cancer in the study by Lim *et al.* however. Of note, Amoura *et al.* reported that three cases had raised levels of both CA19-9 and CA125 and all of these were subsequently diagnosed with cancer (OR 86.3; 95% CI: 4, 1832; P -value <0.0001). Lim *et al.* also reported no association between raised AFP levels and cancer. Interestingly, Lim *et al.* reported an association between CA15-3 levels and the development of ILD; eight (89%) of the nine patients with increased CA15-3 levels were diagnosed with ILD.

Discussion

This meta-analysis has quantified the relationship between 30 clinical factors and the risk of cancer in IIM patients. Fifteen factors significantly associated with cancer risk were identified. Existing evidence relating to the utility of cancer screening in IIM populations was also reviewed, providing information useful for the future formation of cancer screening guidelines.

DM, increasing age, male sex, dysphagia, cutaneous ulceration and the presence of anti-TIF1 γ were all associated with increased cancer risk. The magnitude of risk of cancer was greatest for those positive for anti-TIF1 γ , with a fourfold increased risk. Very high LDH or CK values were associated with reduced cancer risk.

PM and CADM subtypes were associated with lower risk of cancer compared with other subtypes. However, the risk of cancer in PM and CADM cases may be reduced, but the risk is still raised compared with the general population, as previously identified [3].

ASS subtype was a non-significant factor for cancer; however, this was based on data from only two studies. The presence of ILD or any ASS-related antibody, in particular anti-Jo1 and anti-EJ, were significantly associated with lower cancer risk. ASS is characterized by ILD and the presence of any ASS-related antibody, therefore it may be concluded that ASS patients are at significantly lower cancer risk compared with other IIM subtypes.

Insufficient evidence was available to include IMNM subtype in the meta-analysis. However, meta-analysis was possible for anti-SRP and anti-HMGCR, both IMNM-specific autoantibodies. Positivity for either anti-SRP or anti-HMGCR were non-significant factors for cancer. Additionally, very high CK levels, which are also typically observed in IMNM cases, were associated with reduced cancer risk. A small number of studies have reported increased risk of cancer in IMNM patients compared with the general population; however, the risk may be dependent on autoantibody status, as reported by Allenbach *et al.* [80], where anti-HMGCR positivity was associated with increased cancer risk and anti-SRP positivity was not. An increased cancer risk associated with anti-HMGCR positivity compared with the general

population was, however, not found by Tiniakou *et al.* [90]. Overall, the relationship between IMNM and cancer remains unclear, and further research in larger cohorts is warranted.

Anti-NXP2 positivity was not associated with cancer in this meta-analysis even after removal of anti-TIF1 γ -positive cases, where possible. Previous studies have, however, highlighted the increased risk of anti-NXP2 positivity compared with the general population, for example Yang *et al.* reported a cancer risk standardized incidence ratio of 8.14 compared with the general population [21]. It is perhaps, therefore, still appropriate to consider anti-NXP2 positivity a cancer risk factor when considering comparison to the general population. Further research to fully delineate the cancer risk associated with anti-NXP2 positivity is warranted.

Few previous studies have investigated the utility of cancer screening approaches in IIM populations; however, a number of conclusions can be drawn.

Firstly, imaging of internal organs via CT scanning of the thorax, abdomen and pelvis appeared to yield a high proportion of cancers. CT scanning is a readily available low-cost investigation and therefore represents a potentially useful method of screening.

Secondly, CA125 levels may potentially be useful in stratifying patients' ovarian cancer risk. It is important to note, however, that the evidence is overall weak, with only three studies reporting relevant results.

Thirdly, neither of the two included studies demonstrated that ^{18}F -FDG PET/CT scanning leads to a higher yield of cancer diagnosis [84, 88]. The study by Selva-O'Callaghan *et al.*, however, indicated that ^{18}F -FDG PET/CT scanning was comparable to a wide panel of extensive screening investigations in ability to detect cancers. This indicates that a single ^{18}F -FDG PET/CT scan may potentially negate the need for numerous investigations. It is important to note the small population sizes in the studies by Maliha *et al.* [84] and Selva-O'Callaghan *et al.* [88] and non-stratification according to the presence of risk factors, thus precluding extrapolation of utility of ^{18}F -FDG PET/CT in IIM patients with risk factors. The higher number of biopsies performed following ^{18}F -FDG PET/CT without subsequent cancer diagnoses, as reported by Maliha *et al.*, is also a potential disadvantage. ^{18}F -FDG PET/CT can provide potentially useful IIM-specific clinical information relating to ILD and myositis [91]. Further, a single ^{18}F -FDG PET/CT scan can result in lower out of pocket expenses for patients (US \$127 less), compared with a broad panel of screening investigations (i.e. CT, tumour markers, faecal occult blood, mammography, ovarian ultrasonography) [92]. However, a small but potentially important radiation exposure of 25 mSv is associated with an ^{18}F -FDG PET/CT scan, compared with 14–19 mSv with a standard whole-body CT scan [93]. ^{18}F -FDG PET/CT may therefore represent a cost-effective single investigation that can identify underlying malignancy and detect ILD and myositis, thus removing the need for further multiple screening investigations. Further evidence is, however,

required to fully delineate the role of ^{18}F -FDG PET/CT scanning as a screening strategy for cancer in IIM patients.

As previously mentioned, all results and findings in this study pertain only in comparison to IIM patients, not the general population. Future research and meta-analysis may consider delineating the cancer risk of appropriate factors in comparison to the general population.

One major potential limitation to this study is the varying MSA detection methods employed by different studies. This introduces the risk of varying accuracy of MSA detection, thus affecting the calculated effect sizes. Further, substantial heterogeneity potentially limits the clinical translation of variables studied. Publication bias was observed with any ASS-related antibody, thus highlighting potential inaccuracy of calculated effect sizes. Recent advances in understanding raise the possibility that PM cases may actually represent other subtypes, such as IMNM or other neuromuscular disorders [94–96], thus potentially limiting the accuracy of the estimated cancer risk associated with PM. Calculation of the cancer risk associated with connective tissue disease-associated IIM (overlap IIM) was not possible due to varying classification. A number of potential risk factors such as ethnicity, arthralgia, arthritis and fever were not included in this meta-analysis due to unavailability of objective data. No studies addressed whether or not repeated cancer screening is beneficial in identifying cancer; evidence on this important topic will impact screening practices, especially in patients where no cancer was diagnosed via initial screening. The potential interaction of the presence of multiple risk factors and their impact upon stratification of cancer risk in IIM has never been evaluated. The small number of studies that report the utility of cancer screening investigations highlights the need for further research in this area.

Conclusion

This meta-analysis has quantified the risk of cancer associated with a large number of clinical risk factors and MSAs, which can inform cancer screening practices for IIM patients. In addition, the systematic review of available evidence related to utility of cancer screening investigations, although limited, can also inform clinical decisions and aid guideline development in this area. Overall, these results can inform the development of cancer screening guidelines, thus potentially leading to earlier cancer diagnosis and improved patient outcomes.

Acknowledgements

This study was developed and conducted under the International Myositis Assessment and Clinical Studies Group (IMACS). R.A. conceived and designed the study. A.O., M.D.G., D.K., S.T., A.A., A.P. and K.K. carried out the literature review and data extraction. A.O. carried out all data analysis. A.O. led manuscript preparation.

All authors reviewed results, critically appraised the manuscript and approved the final version.

Funding: This report includes independent research supported by the National Institute for Health Research Biomedical Research Centre Funding Scheme. The views expressed in this publication are those of the authors and not necessarily those of the National Health Service, the National Institute for Health Research or the Department of Health.

This work was supported by funding from Myositis UK (to A.O.); Versus Arthritis (Award Number: 21993 to A.O.); the National Institute for Health Research Manchester Biomedical Research Centre (to A.O. and H.C.); the National Institute for Health Research University College London Hospitals Biomedical Research Centre (to P.M.M.) and Bath Institute of Rheumatic Diseases (to S.T.).

Disclosure statement: R.A. served as a consultant for Kezar, Csl Behring, AstraZeneca, Octapharma, BMS, Pfizer, Janssen, Mallinckrodt, Alexion, Q32, Argenx, Boehringer-Ingelheim, Corbus and EMD-Serono; and received research funding from Pfizer, BMS, Genentech, Kezar, Csl Behring and Mallinckrodt. L.C. served on an advisory board and received grant funding from Boehringer Ingelheim; served on an advisory board for Eicos Sciences; served on an advisory board for Bristol-Myers Squibb; received consulting fees for Mitsubishi Tanabe; and serves on a data safety monitoring board for Reata. M.D.G. received a research grant from Bristol-Myers Squibb for unrelated work; and consulting fees from Dysimmune Diseases Foundation. P.M.M. received consulting/speaker's fees from Abbvie, BMS, Celgene, Eli Lilly, Janssen, MSD, Novartis, Orphazyme, Pfizer, Roche and UCB, outside the submitted work. R.A.V. received a research grant from Pfizer. H.C. received research grants, travel grants, consultancy or speaker honoraria from AbbVie, Amgen, BMS, Biogen, Janssen, Lilly, Novartis and UCB. V.P.W. served as a consultant for Kezar, CSL Behring, AstraZeneca, Octapharma, Pfizer, Janssen, Neovacs and Idera; and received research funding from Pfizer, CSL Behring and Corbus.

Data availability statement

There are no new data associated with this article.

Supplementary data

Supplementary data are available at *Rheumatology* online.

References

- Oldroyd A, Lilleker J, Chinoy H. Idiopathic inflammatory myopathies - a guide to subtypes, diagnostic approach and treatment. *Clin Med (Northfield IL)* 2017;17:322–8.
- Chinoy H, Cooper RG. Polymyositis and dermatomyositis. In: Chinoy H and Cooper RG, eds. *Oxford Textbook of Rheumatology*. Oxford: Oxford University Press, 2013:1009–20.
- Qiang JK, Kim WB, Baibergenova A, Alhusayen R. Risk of malignancy in dermatomyositis and polymyositis: a systematic review and meta-analysis. *J Cutan Med Surg* 2017;21:131–6.
- Dobloug GC, Garen T, Brunborg C, Gran JT, Molberg Ø. Survival and cancer risk in an unselected and complete Norwegian idiopathic inflammatory myopathy cohort. *Semin Arthritis Rheum* 2015;45:301–8.
- Nuño-Nuño L, Joven BE, Carreira PE *et al*. Mortality and prognostic factors in idiopathic inflammatory myositis: a retrospective analysis of a large multicenter cohort of Spain. *Rheumatol Int* 2017;37:1853–61.
- Dobloug GC, Svensson J, Lundberg IE, Holmqvist M. Mortality in idiopathic inflammatory myopathy: results from a Swedish nationwide population-based cohort study. *Ann Rheum Dis* 2018;77:40–7.
- Moghadam-Kia S, Oddis CV, Ascherman DP, Aggarwal R. Risk factors and cancer screening in myositis. *Rheum Dis Clin North Am* 2020;46:565–76.
- Moher D, Liberati A, Tetzlaff J, Altman DG, The PRISMA Group. Preferred reporting items for systematic reviews and meta-analyses: the PRISMA statement. *PLoS Med* 2009;6:e1000097.
- Scottish Intercollegiate Guidelines Network. SIGN 50. A guideline developer's handbook, 2011. http://www.sign.ac.uk/assets/sign50_2011.pdf (22 January 2021, date last accessed).
- Hozo SP, Djulbegovic B, Hozo I. Estimating the mean and variance from the median, range, and the size of a sample. *BMC Med Res Methodol* 2005;5:2020.
- Viechtbauer W, Cheung MW-L. Outlier and influence diagnostics for meta-analysis. *Res Synth Methods* 2010;1:112–25.
- Egger M, Smith GD, Schneider M, Minder C. Bias in meta-analysis detected by a simple, graphical test. *Br Med J* 1997;315:629–34.
- Duval S, Tweedie R. Trim and fill: a simple funnel-plot-based method of testing and adjusting for publication bias in meta-analysis. *Biometrics* 2000;56:455–63.
- R Core Team. R: A language and environment for statistical computing, 2014. Available from: <http://www.r-project.org/> (22 January 2021, date last accessed).
- Balduzzi SRücker, G Schwarzer, G. How to perform a meta-analysis with R: a practical tutorial. *Evid Based Ment Health* 2019;36:1–48.
- Viechtbauer W. Conducting meta-analysis in R with the metafor package. *J Stat Softw* 2010;36:1–48.
- Huang YL, Chen YJ, Lin MW *et al*. Malignancies associated with dermatomyositis and polymyositis in Taiwan: a nationwide population-based study. *Br J Dermatol* 2009;161:854–60.
- Chen Y-J, Wu C-Y, Huang Y-L *et al*. Cancer risks of dermatomyositis and polymyositis: a nationwide cohort study in Taiwan. *Arthritis Res Ther* 2010;12:R70.

- 19 Kuo CF, See LC, Yu KH, Chou IJ *et al.* Incidence, cancer risk and mortality of dermatomyositis and polymyositis in Taiwan: a nationwide population study. *Br J Dermatol* 2011;165:1273–9.
- 20 Hill CL, Zhang Y, Sigurgeirsson B *et al.* Frequency of specific cancer types in dermatomyositis and polymyositis: a population-based study. *Lancet* 2001; 357:96–100.
- 21 Yang H, Peng Q, Yin L *et al.* Identification of multiple cancer-associated myositis-specific autoantibodies in idiopathic inflammatory myopathies: a large longitudinal cohort study. *Arthritis Res Ther* 2017;19: 1–9.
- 22 So MW, Koo BS, Kim YG, Lee CK, Yoo B. Idiopathic inflammatory myopathy associated with malignancy: a retrospective cohort of 151 Korean patients with dermatomyositis and polymyositis. *J Rheumatol* 2011;38: 2432–5. Nov
- 23 Chen YJ, Wu CY, Shen JL. Predicting factors of malignancy in dermatomyositis and polymyositis: a case-control study. *Br J Dermatol* 2001;144:825–31.
- 24 Ishizuka M, Watanabe R, Ishii T *et al.* Long-term follow-up of 124 patients with polymyositis and dermatomyositis: statistical analysis of prognostic factors. *Mod Rheumatol* 2016;26:115–20.
- 25 Neri R, Simone B, Iacopetti V *et al.* Cancer-associated myositis: a 35-year retrospective study of a monocentric cohort. *Rheumatol Int* 2014;34:565–9.
- 26 Azuma K, Yamada H, Ohkubo M *et al.* Incidence and predictive factors for malignancies in 136 Japanese patients with dermatomyositis, polymyositis and clinically amyopathic dermatomyositis. *Mod Rheumatol* 2011;21: 178–83.
- 27 Meena AK, Sundaram C, Uppin M *et al.* Incidence of malignancies in biopsy-proven inflammatory myopathy. *Neurol India* 2013;61:152–5.
- 28 Antiochos BB, Brown LA, Li Z, Tosteson TD *et al.* Malignancy is associated with dermatomyositis but not polymyositis in northern New England, USA. *J Rheumatol* 2009;36:2704–10.
- 29 Fang YF, Wu YJJ, Kuo CF, Luo SF, Yu KH. Malignancy in dermatomyositis and polymyositis: analysis of 192 patients. *Clin Rheumatol* 2016;35:1977–84.
- 30 Limaye V, Luke C, Tucker G *et al.* The incidence and associations of malignancy in a large cohort of patients with biopsy-determined idiopathic inflammatory myositis. *Rheumatol Int* 2013;33:965–71.
- 31 Kang EH, Nakashima R, Mimori T *et al.* Myositis autoantibodies in Korean patients with inflammatory myositis: anti-140-kDa polypeptide antibody is primarily associated with rapidly progressive interstitial lung disease independent of clinically amyopathic dermatomyositis. *BMC Musculoskelet Disord* 2010;11: 223.
- 32 Kang EH, Lee SJ, Ascherman DP *et al.* Temporal relationship between cancer and myositis identifies two distinctive subgroups of cancers: impact on cancer risk and survival in patients with myositis. *Rheumatology (Oxford)* 2016;55:1631–41.
- 33 Kim NR, Nam EJ, Kang JW *et al.* Complex repetitive discharge on electromyography as a risk factor for malignancy in idiopathic inflammatory myopathy. *Korean J Intern Med* 2014;29:814–21.
- 34 Wakata N, Kurihara T, Saito E, Kinoshita M. Polymyositis and dermatomyositis associated with malignancy: a 30-year retrospective study. *Int J Dermatol* 2002;41:729–34.
- 35 Ikeda S, Arita M, Misaki K *et al.* Incidence and impact of interstitial lung disease and malignancy in patients with polymyositis, dermatomyositis, and clinically amyopathic dermatomyositis: a retrospective cohort study. *Springerplus* 2015;4:240.
- 36 Maoz CR, Langevitz P, Livneh A *et al.* High incidence of malignancies in patients with dermatomyositis and polymyositis: an 11-year analysis. *Semin Arthritis Rheum* 1998;27:319–24.
- 37 Ceribelli A, Isailovic N, De Santis M *et al.* Myositis-specific autoantibodies and their association with malignancy in Italian patients with polymyositis and dermatomyositis. *Clin Rheumatol* 2017;36:469–75.
- 38 Lee SW, Jung SY, Park MC, Park YB, Lee SK. Malignancies in Korean patients with inflammatory myopathy. *Yonsei Med J* 2006;47:519–23.
- 39 András C, Bodoki L, Nagy-Vincze M *et al.* Retrospective analysis of cancer-associated myositis patients over the past 3 decades in a Hungarian myositis cohort. *Pathol Oncol Res* 2020;26:1749–55.
- 40 Lim CH, Tseng C-W, Lin C-T *et al.* The clinical application of tumor markers in the screening of malignancies and interstitial lung disease of dermatomyositis/polymyositis patients: a retrospective study. *SAGE Open Med* 2018;6:205031211878189–8.
- 41 Ikeda N, Takahashi K, Yamaguchi Y *et al.* Analysis of dermatomyositis-specific autoantibodies and clinical characteristics in Japanese patients. *J Dermatol* 2011; 38:973–9.
- 42 Lilleker JB, Vencovsky J, Wang G *et al.* The EuroMyositis registry: an international collaborative tool to facilitate myositis research. *Ann Rheum Dis* 2018;77: 30–9.
- 43 Hida A, Yamashita T, Hosono Y *et al.* Anti-TIF1- γ antibody and cancer-associated myositis. *Neurology* 2016;87:299–308.
- 44 Ogawa-Momohara M, Muro Y, Mitsuma T *et al.* Strong correlation between cancer progression and anti-transcription intermediary factor 1 γ antibodies in dermatomyositis patients. *Clin Exp Rheumatol* 2018;36:990–5.
- 45 Sparsa A, Liozon E, Herrmann F *et al.* Routine vs extensive malignancy search for adult dermatomyositis and polymyositis: a study of 40 patients. *Arch Dermatol* 2002;138:885–90.
- 46 Ponyi A, Constantin T, Garami M *et al.* Cancer-associated myositis: clinical features and prognostic signs. *Ann N Y Acad Sci* 2005;1051:64–71.
- 47 Bohan A, Peter JB, Bowman RL, Pearson CM. Computer-assisted analysis of 153 patients with polymyositis and dermatomyositis. *Medicine (Baltimore)* 1977;56:255–86.
- 48 Hoshino K, Muro Y, Sugiura K *et al.* Anti-MDA5 and anti-TIF1- γ antibodies have clinical significance for

- patients with dermatomyositis. *Rheumatology* 2010;49:1726–33.
- 49 Souza FHC D, Shinjo SK. Newly diagnosed dermatomyositis in the elderly as predictor of malignancy. *Rev Bras Reumatol* 2012;52:713–21.
- 50 Galimberti F, Li Y, Fernandez AP. Clinically amyopathic dermatomyositis: clinical features, response to medications and malignancy-associated risk factors in a specific tertiary-care-centre cohort. *Br J Dermatol* 2016;174:158–64.
- 51 Hunger RE, Dürr C, Brand CU. Cutaneous leukocytoclastic vasculitis in dermatomyositis suggests malignancy. *Dermatology* 2001;202:123–6.
- 52 El-Azhary RA, Pakzad SY. Amyopathic dermatomyositis: retrospective review of 37 cases. *J Am Acad Dermatol* 2002;46:560–5.
- 53 Fardet L, Dupuy A, Gain M *et al.* Factors associated with underlying malignancy in a retrospective cohort of 121 patients with dermatomyositis. *Medicine (Baltimore)* 2009;88:91–7.
- 54 Liu WC, Ho M, Koh W-P *et al.* An 11-year review of dermatomyositis in Asian patients. *Ann Acad Med Singapore* 2010;39:843–7.
- 55 Okayasu I, Mizutani H, Kurihara H, Yanagisawa F. Cancer in collagen disease. A statistical analysis by reviewing the annual of pathological autopsy cases (Nippon Boken Shuho) in Japan. *Cancer* 1984;54:1841–4.
- 56 Koh ET, Seow A, Ong B *et al.* Adult onset polymyositis/dermatomyositis: clinical and laboratory features and treatment response in 75 patients. *Ann Rheum Dis* 1993;52:857–61.
- 57 Aussy A, Fréret M, Gallay L, the OncoMyositis Study Group *et al.* The IgG2 isotype of anti-transcription intermediary factor 1 γ autoantibodies is a biomarker of cancer and mortality in adult dermatomyositis. *Arthritis Rheumatol* 2019;71:1360–70.
- 58 Hamaguchi Y, Kuwana M, Hoshino K *et al.* Clinical correlations with dermatomyositis-specific autoantibodies in adult Japanese patients with dermatomyositis: a multicenter cross-sectional study. *Arch Dermatol* 2011;147:391–8.
- 59 Liu Y, Xu L, Wu H *et al.* Characteristics and predictors of malignancy in dermatomyositis: analysis of 239 patients from northern China. *Oncol Lett* 2018;16:5960–8.
- 60 Mugii N, Hasegawa M, Matsushita T *et al.* Oropharyngeal dysphagia in dermatomyositis: associations with clinical and laboratory features including autoantibodies. *PLoS One* 2016;11:e0154746.
- 61 Fiorentino DF, Chung LS, Christopher-Stine L *et al.* Most patients with cancer-associated dermatomyositis have antibodies to nuclear matrix protein NXP-2 or transcription intermediary factor 1 γ . *Arthritis Rheum* 2013;65:2954–62. Nov
- 62 Li S, Ge Y, Yang H *et al.* The spectrum and clinical significance of myositis-specific autoantibodies in Chinese patients with idiopathic inflammatory myopathies. *Clin Rheumatol* 2019;38:2171–9.
- 63 Fiorentino DF, Kuo K, Chung L *et al.* Distinctive cutaneous and systemic features associated with antitranscriptional intermediary factor-1 γ antibodies in adults with dermatomyositis. *J Am Acad Dermatol* 2015;72:449–55.
- 64 Fujimoto M, Murakami A, Kurei S *et al.* Enzyme-linked immunosorbent assays for detection of anti-transcriptional intermediary factor-1 gamma and anti-Mi-2 autoantibodies in dermatomyositis. *J Dermatol Sci* 2016;84:272–81.
- 65 Labrador-Horrillo M, Martínez MA, Selva-O'Callaghan A *et al.* Anti-TIF1 γ antibodies (anti-p155) in adult patients with dermatomyositis: comparison of different diagnostic assays. *Ann Rheum Dis* 2012;71:993–6.
- 66 Chinoy H, Fertig N, Oddis CV, Ollier WER, Cooper RG. The diagnostic utility of myositis autoantibody testing for predicting the risk of cancer-associated myositis. *Ann Rheum Dis* 2007;66:1345–9.
- 67 Trallero-Araguás E, Labrador-Horrillo M, Selva-O'Callaghan A *et al.* Cancer-associated myositis and anti-p155 autoantibody in a series of 85 patients with idiopathic inflammatory myopathy. *Medicine (Baltimore)* 2010;89:47–52.
- 68 Best M, Jachiet M, Molinari N, the Study Group of Systemic Diseases in Dermatology (EMSED): Étude des Maladies Systémiques en Dermatologie *et al.* Distinctive cutaneous and systemic features associated with specific antimyositis antibodies in adults with dermatomyositis: a prospective multicentric study of 117 patients. *J Eur Acad Dermatol Venereol* 2018;32:1164–72.
- 69 Kaji K, Fujimoto M, Hasegawa M *et al.* Identification of a novel autoantibody reactive with 155 and 140 kDa nuclear proteins in patients with dermatomyositis: an association with malignancy. *Rheumatology* 2007;46:25–8.
- 70 Fujikawa K, Kawakami A, Kaji K *et al.* Association of distinct clinical subsets with myositis-specific autoantibodies towards anti-155/140-kDa polypeptides, anti-140-kDa polypeptides, and anti-aminoacyl tRNA synthetases in Japanese patients with dermatomyositis: a single-centre, cross-sectiona. *Scand J Rheumatol* 2009;38:263–7.
- 71 Betteridge Z, Tansley S, Shaddick G *et al.* Frequency, mutual exclusivity and clinical associations of myositis autoantibodies in a combined European cohort of idiopathic inflammatory myopathy patients. *J Autoimmun* 2019;101:48–55.
- 72 Rogers A, Chung L, Li S, Casciola-Rosen L, Fiorentino DF. Cutaneous and systemic findings associated with nuclear matrix protein 2 antibodies in adult dermatomyositis patients. *Arthritis Care Res* 2017;69:1909–14.
- 73 Ichimura Y, Matsushita T, Hamaguchi Y *et al.* Anti-NXP2 autoantibodies in adult patients with idiopathic inflammatory myopathies: possible association with malignancy. *Ann Rheum Dis* 2012;71:710–3.
- 74 Ishikawa A, Muro Y, Sugiura K, Akiyama M. Development of an ELISA for detection of autoantibodies to nuclear matrix protein 2. *Rheumatology (United Kingdom)* 2012;51:1181–7.

- 75 Albayda J, Pinal-Fernandez I, Huang W *et al.* Antinuclear matrix protein 2 autoantibodies and edema, muscle disease, and malignancy risk in dermatomyositis patients. *Arthritis Care Res* 2017;69:1771–6.
- 76 Wang L, Huang L, Yang Y *et al.* Calcinosis and malignancy are rare in Chinese adult patients with myositis and nuclear matrix protein 2 antibodies identified by an unlabeled immunoprecipitation assay. *Clin Rheumatol* 2018;37:2731–9.
- 77 Marie I, Josse S, Decaux O *et al.* Comparison of long-term outcome between anti-Jo1- and anti-PL7/PL12 positive patients with antisynthetase syndrome. *Autoimmun Rev* 2012;11:739–45.
- 78 Pinal-Fernandez I, Casal-Dominguez M, Huapaya JA *et al.* A longitudinal cohort study of the anti-synthetase syndrome: increased severity of interstitial lung disease in black patients and patients with anti-PL7 and anti-PL12 autoantibodies. *Rheumatology (Oxford)* 2017;56:999–1007.
- 79 Hamaguchi Y, Fujimoto M, Matsushita T *et al.* Common and distinct clinical features in adult patients with anti-aminoacyl-tRNA synthetase antibodies: heterogeneity within the syndrome. *PLoS One* 2013;8:e60442.
- 80 Allenbach Y, Keraen J, Bouvier AM *et al.* High risk of cancer in autoimmune necrotizing myopathies: usefulness of myositis specific antibody. *Brain* 2016;139:2131–5.
- 81 Aggarwal R, Moghadam-Kia S, Lacomis D *et al.* Anti-hydroxy-3-methylglutaryl-coenzyme A reductase (anti-HMGCR) antibody in necrotizing myopathy: treatment outcomes, cancer risk, and role of autoantibody level. *Scand J Rheumatol* 2020;49:405–11.
- 82 Hoesly PM, Sluzevich JC, Jambusaria-Pahlajani A *et al.* Association of antinuclear antibody status with clinical features and malignancy risk in adult-onset dermatomyositis. *J Am Acad Dermatol* 2019;80:1364–70.
- 83 Kidambi TD, Schmajuk G, Gross AJ *et al.* Endoscopy is of low yield in the identification of gastrointestinal neoplasia in patients with dermatomyositis: a cross-sectional study. *World J Gastroenterol* 2017;23:4788–95.
- 84 Maliha PG, Hudson M, Abikhzer G, Singerman J, Probst S. ¹⁸F-FDG PET/CT versus conventional investigations for cancer screening in autoimmune inflammatory myopathy in the era of novel myopathy classifications. *Nucl Med Commun* 2019;40:377–82.
- 85 Leatham H, Schadt C, Chisolm S *et al.* Evidence supports blind screening for internal malignancy in dermatomyositis: data from 2 large US dermatology cohorts. *Medicine (Baltimore)* 2018;97:e9639.
- 86 Huang Z, Gao B, Chen H *et al.* An efficacy analysis of whole-body magnetic resonance imaging in the diagnosis and follow-up of polymyositis and dermatomyositis. *PLoS One* 2017;12:e0181069.
- 87 Whitmore SE, Anhalt GJ, Provost TT *et al.* Serum CA-125 screening for ovarian cancer in patients with dermatomyositis. *Gynecol Oncol* 1997;65:241–4.
- 88 Selva-O'Callaghan A, Grau JM, Gámez-Cenzano C *et al.* Conventional cancer screening versus PET/CT in dermatomyositis/polymyositis. *Am J Med* 2010;123:558–62.
- 89 Amoura Z, Duhaut P, Huong DLT *et al.* Tumor antigen markers for the detection of solid cancers in inflammatory myopathies. *Cancer Epidemiol Biomarkers Prev* 2005;14:1279–82.
- 90 Tiniakou E, Pinal-Fernandez I, Lloyd TE *et al.* More severe disease and slower recovery in younger patients with anti-3-hydroxy-3-methylglutarylcoenzyme A reductase-associated autoimmune myopathy. *Rheumatology (Oxford)* 2017;56:787–94.
- 91 Motegi S, Fujiwara C, Sekiguchi A *et al.* Clinical value of ¹⁸F-fluorodeoxyglucose positron emission tomography/computed tomography for interstitial lung disease and myositis in patients with dermatomyositis. *J Dermatol* 2019;46:213–8.
- 92 Kundrick A, Kirby J, Ba D *et al.* Positron emission tomography costs less to patients than conventional screening for malignancy in dermatomyositis. *Semin Arthritis Rheum* 2019;49:140–4.
- 93 Brix G, Lechel U, Glatting G *et al.* Radiation exposure of patients undergoing whole-body dual-modality ¹⁸F-FDG PET/CT examinations. *J Nucl Med* 2005;46:608–13.
- 94 Loarce-Martos J, Lilleker JB, Parker M, McHugh N, Chinoy H. Polymyositis: is there anything left? A retrospective diagnostic review from a tertiary myositis centre. *Rheumatology* 2020; Advance Access published 24 December 2020, doi: 10.1093/rheumatology/keaa801.
- 95 van der Meulen MF, Bronner IM, Hoogendijk JE *et al.* Polymyositis: an overdiagnosed entity. *Neurology* 2003;61:316–21.
- 96 Amato AA, Griggs RC. Unicorns, dragons, polymyositis, and other mythological beasts. *Neurology* 2003;61:288–9.