

Review

Comprehensive Review of Fungi on Coffee

Li Lu ^{1,2,3,4} , Saowaluck Tibpromma ⁴ , Samantha C. Karunarathna ⁴ , Ruvishika S. Jayawardena ² ,
Saisamorn Lumyong ^{5,6,7} , Jianchu Xu ^{8,9}  and Kevin D. Hyde ^{1,2,5,*}

- ¹ Innovative Institute of Plant Health, Zhong Kai University, Guangzhou 510550, China; 6371105004@lamduan.mfu.ac.th
- ² Center of Excellence in Fungal Research, Mae Fah Luang University, Chiang Rai 57100, Thailand; ruvishika.jay@mfu.ac.th
- ³ School of Science, Mae Fah Luang University, Chiang Rai 57100, Thailand
- ⁴ Center for Yunnan Plateau Biological Resources Protection and Utilization, College of Biological Resource and Food Engineering, Qujing Normal University, Qujing 655011, China; saowaluckfai@gmail.com (S.T.); samanthakarunarathna@gmail.com (S.C.K.)
- ⁵ Research Center of Microbial Diversity and Sustainable Utilization, Chiang Mai University, Chiang Mai 50200, Thailand; scboi009@gmail.com
- ⁶ Department of Biology, Faculty of Science, Chiang Mai University, Chiang Mai 50200, Thailand
- ⁷ Academy of Science, The Royal Society of Thailand, Bangkok 10300, Thailand
- ⁸ Center for Mountain Futures, Kunming Institute of Botany, Chinese Academy of Sciences, Kunming 650201, China; jxu@mail.kib.ac.cn
- ⁹ CIFOR-ICRAF China Country Program, World Agroforestry Centre, Kunming 650201, China
- * Correspondence: kdhyde3@gmail.com

Abstract: Coffee is grown in more than 80 countries as a cash crop and consumed worldwide as a beverage and food additive. It is susceptible to fungal infection during growth, processing and storage. Fungal infections, in particular, can seriously affect the quality of coffee and threaten human health. The data for this comprehensive review were collected from the United States Department of Agriculture, Agricultural Research Service (USDA ARS) website and published papers. This review lists the fungal species reported on coffee based on taxonomy, life mode, host, affected plant part and region. Five major fungal diseases and mycotoxin-producing species (post-harvest diseases of coffee) are also discussed. Furthermore, we address why coffee yield and quality are affected by fungi and propose methods to control fungal infections to increase coffee yield and improve quality. Endophytic fungi and their potential as biological control agents of coffee disease are also discussed.

Keywords: endophytes; fungal diseases; fungal toxins; pathogens; postharvest diseases



Citation: Lu, L.; Tibpromma, S.; Karunarathna, S.C.; Jayawardena, R.S.; Lumyong, S.; Xu, J.; Hyde, K.D. Comprehensive Review of Fungi on Coffee. *Pathogens* **2022**, *11*, 411. <https://doi.org/10.3390/pathogens11040411>

Academic Editor: Dov Prusky

Received: 17 February 2022

Accepted: 22 March 2022

Published: 28 March 2022

Publisher's Note: MDPI stays neutral with regard to jurisdictional claims in published maps and institutional affiliations.



Copyright: © 2022 by the authors. Licensee MDPI, Basel, Switzerland. This article is an open access article distributed under the terms and conditions of the Creative Commons Attribution (CC BY) license (<https://creativecommons.org/licenses/by/4.0/>).

1. Introduction

Coffee has gained in popularity in modern times and is the second-best-selling beverage in the world [1]. As an important economic crop, it is central to the livelihoods of millions of people worldwide [2]; accordingly, more than 80 countries grow coffee and some countries use coffee as a major cash crop [3]. World coffee production for 2020/2021 is forecast to be 5.5 million kg higher than the previous year, reaching a record 176.1 million kg [4]. Brazil is the largest exporter of coffee, and its exports account for one-third of the global total [5]. The Agricultural Trade Office in Sao Paulo (ATO) forecasts the Brazilian coffee production for 2020/2021 at a record of 67.9 million kg, an increase of 15% over 2019 output. Finland is the largest per capita consumer of coffee, while China consumes the most coffee by volume [6]. *Coffea arabica* and *C. canephora* (robusta) are the two most-grown coffee species in the world [7], accounting for 60% and 40% of global production, respectively [8].

Throughout the tropics, coffee growers face many problems in agricultural production [9]. As a climate-sensitive plant, implications of climate change have altered coffee production, from decreasing crop yield and quality to increasing fungal diseases and invasive pests [10]. Coffee worldwide suffers from a range of pests and diseases, and fungal

infections are also a major problem [11]. Coffee roots, stems, leaves and beans are often damaged by pests and pathogens [12].

Fungi on coffee occur in different life modes: endophytes, pathogens and saprobes [13–15]. The largest number of fungi have been recorded from *C. arabica* and *C. canephora* (Table S1). Endophytes usually live inside the host without causing injury or obvious symptoms, and this association can provide a better living environment for both the host and fungus [16]. There are also reports on their ability to aid in the defense of host plants [17,18]. Huang et al. [19] screened potential antagonistic endophytes that prevent and control post-harvest diseases. Coffee easily can be infected by pathogenic fungi when growing, during post-harvest handling and storage, and during processing [20]. One of the most virulent diseases is ‘coffee rust’ caused by *Hemileia vastatrix*, which wiped out coffee 150 years ago and continues to cause problems in coffee plantations worldwide [21,22]. Fungal diseases in coffee can be divided into two types: diseases in pre-harvest and diseases in post-harvest [23,24]. Many post-harvest coffee pathogens are infected shortly before harvest, are generally not found at harvest, and feature low activity; moreover, poor storage conditions during post-harvest favour their development [23]. Fungal invasions before harvest are mainly induced by the interaction between the plant host and other organisms (such as insects), while fungal infections after harvest are controlled by nutrient availability, temperature, humidity and biological factors (insects) [25]. Another pathway is that endophytic fungi in coffee beans change their life modes to saprobic/pathogenic after the beans are harvested, becoming postharvest pathogens [19,26]. Most postharvest fungi produce toxins as secondary metabolites viz ochratoxin-A, which is a mycotoxin mainly produced as a result of secondary metabolism of many species of *Aspergillus* and *Penicillium* and is the most common mycotoxin present in agricultural commodities [27]. Toxin-producing fungi can be isolated from coffee beans both pre-harvest and post-harvest, while the risk of fungal growth and mycotoxin production after harvest is higher in high temperature areas [28,29]. These toxins can cause host infections and reduce coffee bean quality [30] and can be carcinogenic, hepatotoxic, hematotoxic, nephrotoxic and neurotoxic for humans [31,32]. Silva et al. [33] isolated ochratoxin-A from damaged coffee beans, and ochratoxin-A was shown to cause coffee quality and yield losses. Studies have shown that the main toxigenic fungal genera comprise *Aspergillus*, *Penicillium* and *Fusarium*, which are natural coffee contaminants [34], and they can infect hosts in both farms and warehouses [35].

In our review, 966 fungal records belonging to 113 genera and 648 species found on coffee are reported (Table S1). The purpose of this review is to discuss the fungal taxa reported on coffee based on taxonomy, life mode, host, affected plant part and region, and also discuss the roles of endophytes. In addition, this review provides a comprehensive up-to-date list of coffee fungi found worldwide and proposes recommendations for preventing fungal pathogen infections. This review provides (1) preliminary information on coffee fungi, (2) summarizes the main factors of coffee loss, and (3) suggestions for improving coffee yield and quality.

2. Results

2.1. Records of Coffee Fungi

A total of 966 records of coffee fungi (Supplementary Table S1) were found in the literatures, belonging to 113 genera of which frequently found families and genera are shown in Figure 1a and Supplementary Table S2.

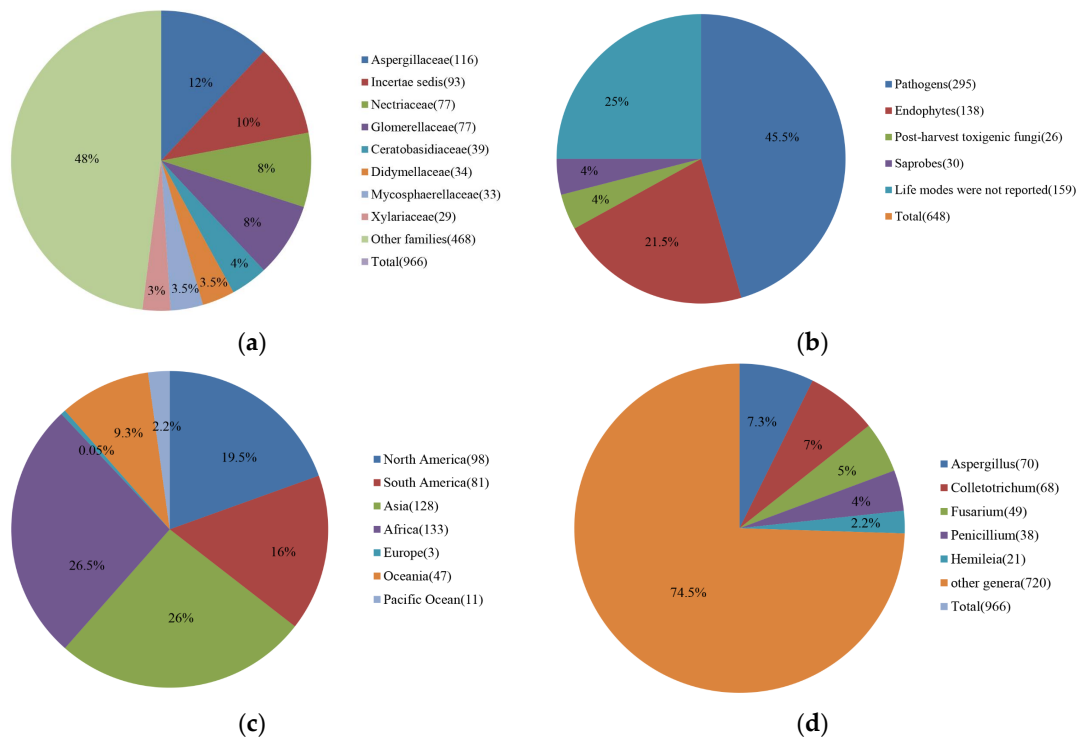


Figure 1. (a) Percentages of different fungal families reported on coffee; (b) Percentages of different life modes of fungi reported on coffee; (c) Percentages of coffee pathogens reported in different countries; (d) Percentages of most frequently reported fungal pathogenic and toxicogenic fungal genera on coffee.

Out of 648 fungal species, 295 are pathogenic, 138 are endophytes, and 30 are saprobes, while the life modes of 159 species have not been confirmed and another 26 species are post-harvest disease causing agents that can produce mycotoxins in dried and green coffee beans (Figure 1a,b). It was not confirmed in reported publications whether most reported pathogens caused pre-harvest or post-harvest infections. Of the 295 species of pathogens, 212 species are true pathogens (TP), three species are post-harvest pathogens (PP) and four species are both true pathogens (TP) and post-harvest pathogens (PP), while the other 76 species are listed as unknown (UNK) as their disease symptoms have not been confirmed on coffee (Supplementary Table S4).

2.2. Endophyte Role in Coffee Plants

Endophytic fungi that can inhibit nematodes, coffee berry borers and pathogenic fungi have the potential to be used as biocontrol agents to control pest and pathogen infections of coffee [36–38]. Goates et al. [39] showed that some endophytic fungi reduce fungal diseases by producing volatile organic compounds that can kill or inhibit phytopathogens. Monteiro et al. [40] demonstrated that volatile organic compounds produced by the endophyte *Muscodor coffeanum* isolated from *C. arabica* produce fungicidal activity against *Aspergillus ochraceus*. Three records of *Muscodor* species belonging to induratiaceae [41] were found in coffee according to our data. De Almeida et al. [42] isolated *Aspergillus* sp., *A. westerdijkiae*, *A. niger*, *A. tamari*, and *A. fumigatus*, *Lichtheimia ramosa* and *Rhizopus oryzae* from coffee beans to test their abilities to inhibit the growth of *Aspergillus* species and ochratoxin-A production, and *A. niger* showed the best inhibitory ability of both growth and ochratoxin-A production. According to our results, Aspergillaceae is the most frequently found family in coffee. Furthermore, Eida et al. [43] isolated *Penicillium crustosum*, *Penicillium verruculosum*, *Trichoderma harzianum*, and *Hypocrea lixii* from coffee residue compost that can aid in the degradation of lignocellulose waste.

2.3. Pathogen Effect on Coffee and Coffee Disease

Among 648 species, fungal pathogens are the most common (295 species) as shown in Figure 1b. According to Supplementary Tables S1 and S3: Sixty-eight of *Colletotrichum* belonging to 35 species have been reported. Coffee production is often affected by Coffee Berry Disease, which is the main factor limiting the production of *C. arabica* in Kenya and other countries in East Africa, especially in high-altitude areas. It is potentially responsible for 50 to 80% of total crop losses [44]. Forty-nine *Fusarium* belonging to 23 species have been reported (Supplementary Tables S1 and S3). *Fusarium* species are one of the most important phytopathogenic and toxin-producing fungi [45]. Coffee Wilt Disease is a devastating disease in East and Central Africa [46]. Coffee Wilt Disease is a vascular disease, and due to its high transmission potential, Coffee Wilt Disease poses a threat to all coffee-producing regions. This disease can kill its host at all ages in a short time [47]. Moreover, after the infected trees and their roots are removed, the infested soil may remain infectious for several years [48]. Twenty-one *Hemileia* have been reported belonging to two species, and *Hemileia vastatrix* is an important phytopathogenic fungus that causes Coffee Leaf Rust. Coffee Leaf Rust, one of the major diseases of Arabica coffee is a major threat to coffee production worldwide and it has been reported to cause serious economic losses in more than 50 coffee-growing countries [49]. Brown Eye Spot or *Cercospora* Blotch caused by *Cercospora coffeicola*, has been reported on coffee. Besides, Andrade et al. [50] showed that isolates producing brown eye spot and black spot can also cause prompt alterations in the antioxidant metabolism of coffee leaves. *Armillaria* root rot caused by *Armillaria* sp., has been reported on coffee, and this disease leads to coffee plant rot and the eventual death of the plant. Since this fungus invades deeper into roots, symptoms are difficult to detect, thus it can last for several years before symptoms appear on the surface. This disease spreads to other plants with the transfer of soil [51]. Major coffee diseases that have a huge impact on coffee plantations worldwide are discussed in detail below [14].

2.3.1. Detection and Identification of Diseases

Detection and identification of fungal diseases in crops can be done through direct and indirect methods. Direct detection of fungal diseases includes molecular and serological methods, while indirect methods identify the plant diseases through various parameters such as morphological change, temperature change, transpiration rate change, and volatile organic compounds released by infected plants [52]. Among different methods, fungal morphology is a commonly used method to identify coffee pathogens [11], while pathogenicity tests [53] and Polymerase Chain Reaction (PCR) [54] are also used. Generally, three main methods are used for the identification of coffee fungal pathogens.

Fungal morphological characteristics—Different fungal pathogens cause different symptoms on the host surface [14]. Firstly, the disease symptoms on the host are observed and recorded, and then the pure cultures grown on potato dextrose agar (PDA) are obtained according to the isolation method of Senanayake et al. [55]. Finally, colony size, colour of the conidial masses and zonation, size, and shape of conidia harvested from the cultures are recorded under the microscope [44].

Pathogenicity test (Koch's postulates)—Spore suspensions of pathogenic fungi are obtained by pure cultures grown on PDA for 7 to 10 days, prepare healthy/disease-free hosts, then carry out the pathogenicity test [44]. After inoculation, the changes are recorded from 1 to 15 days of growth, compare the morphological characteristics of the lesions in the host with original disease lesions.

Polymerase Chain Reaction—Pure cultures of pathogenic fungi grown on PDA for 7 to 10 days are used to scrape mycelium from the culture surface. Then, the genomic DNA is extracted using a Genomic DNA Extraction Kit or CTAB. Finally, PCR amplification is done for the specific genes of interest [44].

2.3.2. Coffee Leaf Rust

- Pathogen: *Hemileia vastatrix* has spread to all coffee cultivation areas worldwide. *Hemileia coffeicola* is restricted to central and western Africa, especially in higher and cooler regions [22,56].
- Hosts: *C. arabica* (arabica coffee) and *C. canephora* (robusta coffee), the two most important commercial coffee species [56].
- Symptoms and signs: Infection occurs on the leaves of coffee. The first observable symptoms are small, and light-yellow spots on the upper surface of leaves. As the diameter of these points gradually increases, a large number of orange urediniospores (=uredospores) appear under the leaf surface. The fungus forms spores through stomata instead of penetrating the epidermis like most rust-causing species, so it does not form many typical rust pustules. Powdery lesions under leaves appear orange-yellow to red-orange with a high degree of variance. Although disease spots can develop anywhere on the leaf, they tend to concentrate around the edges, where dew and raindrops gather. The center of the spot eventually dries out and turns brown, while edges of the lesions continue to expand and produce new spores. At the beginning of the season, the disease usually first appears on the lower branches, and infection progresses slowly up the tree. Infected leaves fall prematurely, leaving long branches without leaves [14,56–59].
- Pathogen biology: *Hemileia vastatrix* mainly exists in the form of dikaryotic, and nutrient-absorbing mycelium between cells in leaves of its coffee host. Short pedicels are clustered throughout stomata and below leaves, with dual-nucleated spores. Towards the end of the season, sometimes under cool, dry conditions, spores are produced from polyspores on older attached leaves. After nuclear division and meiosis, these sporozoites germinate to produce basidia, each of which forms four haploid sporozoites [14,56–59].
- Disease cycle: Urediniosporic life cycle as its most important source of inoculum, can cause infection and develop into lesions, producing more urediniospores. Spore adhesion to the host surface, germination of urediniospores, formation of an adhesion layer on stomata, penetration, and intercellular and intracellular colonization are various steps of the disease cycle. The disease cycle of Coffee Leaf Rust is discussed in Talhinhos et al. [22].
- Disease management:
 1. Chemical control: Fungicide sprays (Epoconazole, Pyraclostrobin, Cyproconazole, Hexaconazole or Cupric Fungicides) [14,22].
 2. Cultural practices: Agroforestry practices of tree-crop mixing, timely pruning, handling and de-suckering, regular change of crop cycle [49].
 3. Biological practices: *Pichia membranifaciens* is a yeast strain isolated from soil that can reduce the *Hemileia vastatrix* spore viability [59].
 4. Resistant varieties: Such as HDT (Hibrido de Timor), Catimor and Sarchimor populations [22].

2.3.3. Coffee Berry Disease

- Pathogen: *Colletotrichum kahawae* is a particularly devastating pathogen that affects developing berries, leading to berry rot and shedding before bean formation. *Colletotrichum kahawae* has not been reported outside Africa or in low altitudes. Coffee Berry Disease was first detected and identified by McDonald in Kenya in 1922 [14].
- Hosts: Mainly *C. arabica* (arabica coffee) [14].
- Symptoms and signs: Characteristic symptoms are progressive anthracnose of young and expanding coffee berries. Symptoms present as small water-soaked lesions that rapidly become dark and sunken. These lesions expand, causing rot of the entire berry under humid conditions, and pink spore masses become visible on the lesion surface. Berries are often shed from branches at an early stage of the disease. Lesions may also occur on young berry stalks, causing them to shed before lesions are evident on berries.

Pale, corky lesions (scab lesions) also appear on young and mature berries that are resistant to infection. They may completely heal or remain dormant until berries ripen. This disease also affects ripening berries, causing a 'brown blight' phase as typical dark, sunken anthracnose lesions that envelop the red berries. *Colletotrichum kahawae* may also infect flowers under wet conditions, causing brown lesions on petals [14,58,60].

- Pathogen biology: The fungus settles in the mature bark of coffee buds and infects flowers, mature fruits, and leaves. Under high humidity and high temperature, conidia germinate and form germ tubes and appendages when contacted with susceptible tissues [61].
- Disease cycle: The Coffee Berry Disease cycle begins each year at the first rain event and is subsequently maintained by rain-splash dispersal and secondary inoculation of conidia onto healthy berries in the rainy season. The disease cycle of Coffee Berry Disease is discussed in De Silva et al. [62].
- Disease management:
 1. Cultural practices: Shading with fruit trees and irrigation to induce early flowering to decrease the severity and all berries should be removed at the end of the planting season to prevent them from becoming a source of inoculation for new crops [60].
 2. Biological control: Many components in the microbiota (fungi and bacteria) on coffee trees show very high antagonistic levels and have a strong antagonistic effect on *Colletotrichum kahawae*. However, these agents have not been developed into commercial biocontrol agents [60].
 3. Chemical control: The most economical method is to use a mixture of copper fungicide (50% wettable copper chloride wettable powder 5 kg) and organic fungicide (75% chlorothalonil wettable powder 2 kg) [14,60].
 4. Resistant varieties: Ruiru 11, Hibrido de Timor, Rume Sudan, K7, and several Catimors. In Ethiopia, 37 Coffee Berry Disease resistant coffee cultivars are used [14,60].

2.3.4. Coffee Wilt Disease

- Pathogen: *Fusarium xylarioides* causes wilt in *Coffea excelsa* (*C. liberica*) (Steyaert 1948). This disease was first detected in 1927 in Oubangui-Chari (now the Central African Republic) and was initially thought to be caused by a root rot [14,47].
- Hosts: *C. arabica* (arabica coffee), *C. canephora* (robusta coffee), and *C. excelsa* [47].
- Symptoms and signs: First, leaves turn yellow before withering and developing brown necrotic lesions. Finally, leaves curl, dry, and fall. This process can start from any part of the plant, but eventually, symptoms spread to the rest of the plant. Symptoms first present on the coffee stem, where fungi colonize, and the host response blocks vascular bundles, resulting in blue-black stains [14,47,58,63].
- Pathogen biology: Conidia and ascospores are spread by wind, rain and through human activities (harvesting, pruning). Pathogens penetrate wounds, so any agent causing wounds aids the spread of the fungus. Krantz and Mogk in 1973 noted that most dying and dead trees had been wounded during weeding. Insects may also spread the disease from one tree to another tree [64].
- Disease cycle: Incubation period from first symptoms to death of tree varies, although most affected trees die 2–3 months after initial symptoms were observed. It usually quickly kills infected mature trees within just 6 months after the first external symptoms appear, resulting in a decline of total yield. Coffee quality may also be affected by premature berry ripening. The disease cycle of Coffee Wilt Disease is discussed in Alemu et al. [65].
- Disease management:
 1. Cultural practices: Frequent inspection, along with burning infected material and spraying soil surfaces with 2.5% copper (II) sulphate. Replanting should not be done until 6 months after uprooting infected trees to allow the viability of soil inoculum to decline. It is recommended to grow cover crops such as *Desmodium* sp. and haricot bean, which are very efficient in suppressing weeds (so reducing the need for slashing) and as legumes, promote the growth of coffee trees [63].

2. Chemical control: Ridomil Gold (metalxyl 8% + Mancozeb 64%) 68% Wp 2.5 kg/ha, when disease on set, used at 7, 14, 21, 28 days. Pencase 80% WP (Mancozeb) at the rate of 2.5 kg/ha, when disease on set, used at 7, 14, 21 days [63].
3. Biological control: The strain of *Bacillus subtilis* (AUBB20) is the most antagonistic to this disease. *Trichoderma viride* and *Trichoderma harzianum* have shown good potential in inhibiting the mycelial growth of *Fusarium xylarioides*, but no effective methods of biological control are currently available [63].

2.3.5. Brown Eye Spot or Cercospora Blotch

- Pathogen: *Cercospora coffeicola* is distributed throughout the tropics and subtropics and is prone to appear on coffee plants in areas with higher moisture and rainfall as well as on plants that are stressed [14,66].
- Hosts: *C. arabica* (arabica coffee), *C. canephora* (robusta coffee) [66].
- Symptoms and signs: on the leaves, small, round to irregular spots, and brown to light brown lesions first appear. The number and size of lesions then increase before eventually the entire leaf is affected. The edge of the lesion may appear dark purple or black, and it may be encircled by a yellow halo. Severely infected leaves turn yellow and fall off; lesions on green berries are initially brown, sunken, longitudinal, irregular or oval with a gray center. Infection can occur at any stage of berry growth; on the red cherries, first, large, sunken, and blackened areas cover with silvery fungal spores. Penetration into the seeds may cause the pulp to stick to parchment paper during processing, and damage the product. *Cercospora coffeicola* reduces productivity and lowers the beverage quality of coffee [14,57,67].
- Pathogen biology: Wind, splashing water and human activities cause spores (conidia) to be deposited on leaves and petioles, beginning the disease cycle. Conidia germinate at moderate to warm (20–28 °C) temperatures [68].
- Disease cycle: In warm and humid periods, new infections and sporulation occur every 7 to 10 days. Pathogen easily spreads in fields via wind, rain, and irrigation water. It survives as a pathogen in weeds and infested crop fragments, where it is capable of re-infecting grown plants. The disease cycle of *Cercospora* Blotch is discussed in Souza et al. [69].
- Disease management:
 1. Biological control: No biological control measures have been developed [68].
 2. Cultural practices: Elimination of crop debris, weed hosts and provide 35–65% shade. In order to maintain adequate plant nutrition, nitrogen fertilizers are used. Plant only high-quality seeds, and destroy infected crops in time after the final harvest and before replanting. Select a reasonable planting density (10 ft × 10 ft for robusta while 8 ft × 8 ft for arabica). Avoid planting coffee transplants too deep in soils [68].
 3. Chemical control: Fungicide sprays are necessary for disease control in wet conditions, but proper fungicides, rates, and fungicide rotations such as Chlorothalonil and Chlorothalonil Mixtures, Strobilurins and Strobilurin Mixtures should be followed [68].

2.3.6. Armillaria Root Rot

- Pathogen: *Armillaria* root rot is caused by several species of *Armillaria* [14].
- Hosts: *C. arabica* (arabica coffee), *C. canephora* (robusta coffee) [14].
- Symptoms and signs: Common symptoms of *Armillaria* infections include tissue death, wilting and the yellowing of tree-tops, and resin exudation, as well as the underside of bark, is easily attacked by white mycelium [14,58].
- Pathogen biology: This fungus usually exists in soil, and when coffee trees grow in unfavorable conditions, it infects the tree. For example, drought, soil compaction, root injury, and nutrient deficiency may induce it to infect the coffee tree. The fungus produces filaments on the ground, and these filaments can invade healthy roots, move

to the root collar, and spread throughout the trunk. The infection causes sapwood in the affected area to rot and eventually kill the tree [70].

- Disease cycle: *Armillaria* spreads in two ways. The first method of transmission is through airborne sexual spores, which can sometimes lead to the creation of new infection centers. The second method of spread is through the growth of pathogens from infected trees to neighboring trees via mycelial transfer at the location where the diseased roots come into contact with each other or via rhizomes that grow through the ground. Depending on the climate, stump size, and other factors, *Armillaria* can live up to 50 years or more. The disease cycle of *Armillaria* root rot is discussed in Jayawardena et al. [71].
 - Disease management: The affected trees are incurable. However, if the disease is detected early enough, host trees can be preserved. It is important to prevent this disease by avoiding conditions that cause the tree's vitality to decline. As *Armillaria* root rot can last for many years, avoid replanting where the diseased trees have been removed [14,58,70].
1. Biological control: Use antagonistic fungi to preemptively settle or eliminate *Armillaria* species in coffee plants.
 2. Soil barrier: Creating a barrier in the soil to root and rhizomorph growth may be a practical way to limit the pathogen's spread, and this is called trenching. This is done by digging a trench down to 1 m (about 3 ft), lining it with plastic, and backfilling.
 3. Chemical control: Usually after stump removal and before planting, fumigants such as chloropicrin, carbon disulphide, and methyl bromide are used in orchards to eradicate inocula from the soil.

2.4. Distribution of Pathogenic Fungi on Coffee Worldwide

In total, 295 pathogens have been recorded across more than 90 countries (Supplementary Table S1, Figure 1c). The main pathogens are concentrated in Asia and Africa. Brazil has the highest number of pathogens in our statistics.

2.5. Pathogenic and Toxigenic Fungi on Coffee

Three pathogenic and two toxigenic fungal genera are reported frequently (Figure 1d). *Aspergillus* and *Penicillium* are the main toxin-producing fungal genera, while *Colletotrichum*, *Hemileia*, and *Fusarium* are the main fungal pathogenic genera on coffee. According to our statistics, *Fusarium* is a pathogen of coffee and also some species in this genus have been reported as mycotoxin producers (Supplementary Table S5) [72].

Twenty-six of the taxa reported on coffee produce toxins viz: 20 *Aspergillus*, two *Penicillium*, and one species from *Byssochlamys*, *Fusarium*, *Mucor*, and *Rhizopus* (Supplementary Table S5). *Fusarium* species are mainly pathogenic affecting coffee causing disease and producing toxins. The main fungal toxins reported on coffee are ochratoxin-A/ochratoxin-B, while Aflatoxin B1/B2 and other mycotoxins were reported less than Ochratoxins [73]. Once the coffee is contaminated with ochratoxin-A, it is difficult to eliminate by cooking due to its thermostability and small size molecules [74]. The accumulation of mycotoxins in plant tissues is related to the development of plant disease symptoms [25]. Based on Supplementary Table S5, the toxin-producing species mainly comes from Aspergillaceae. One hundred and forty-eight records of Aspergillaceae have been reported on coffee worldwide, but there are likely more toxin-producing taxa in this family.

3. Discussion and Conclusions

Since the diversity of plant pathogenic fungi is higher than that of plant pathogenic bacteria and viruses, fungal diseases are responsible for the largest coffee losses worldwide [75]. Microbial diseases cause 16% of crop (including coffee) losses worldwide, and 70–80% of these losses are caused by fungi [76]. Cerda et al. [77] showed that pests and diseases cause high primary yield losses (26%) and even higher secondary yield losses

(38%). For instance, Coffee berry borer affects coffee yield while increasing the risk of toxigenic fungal infections [18].

Fungal infection is a serious problem affecting coffee production and quality [78]. The most serious fungal diseases of coffee reported are Coffee Leaf Rust, Coffee Berry Disease and Coffee Wilt Disease, Brown Eye Spot, and root rot disease [14,58,79]. Coffee Leaf Rust causes loss of physiological activities and leaves to fall off, coffee serves as an obligate host for Coffee Leaf Rust, and this disease devastates susceptible coffee plantations. In severe cases, this disease can cause branches to wither completely, weaken the plant, and hinder or even stop its development; it can cause damage leading to severe yield losses up to 75% [49]. Usually, seriously ill and fragile coffee trees cannot survive Coffee Leaf Rust. Coffee Berry Disease mainly occurs in *C. arabica* and is capable of destroying almost all berries on the coffee tree, but it does not cause any effect on branches and leaves. This disease spreads rapidly above 1500 m altitude under cool and humid conditions and can cause losses as high as 80%. Coffee Wilt Disease is the most serious coffee disease on the African continent. According to Rutherford et al. [47], since 2001, farms in the Democratic Republic of the Congo, Tanzania, and Uganda have suffered from the disease, and the average yield loss was reported at 70%. Brown Eye Spot or *Cercospora* “Berry Blotch” can attack coffee at any stage, and infected plants lose most of their leaves, or even all of them in the same cases, and berries can also be infected. This disease may result in more than 30% production loss and can also reduce quality. *Armillaria* cause rots in various hosts across the world, and coffee is one of the main known hosts. Between 5–20% of all tree deaths can be attributed to this disease in plantations. Some diseases only manifest when plants are accidentally injured by farming tools, especially when wounds are created at the bottom of tree trunks, and in turn, wounds should be treated appropriately with antiseptic healing creams in order to prevent the invasion of diseases such as *Fusarium* wilt and cankers [14,47,80,81].

Other less serious pathogens of coffee include Leaf Spot (*Alternaria* sp., and *Ascochyta* sp.) and damping-off (*Pythium* sp.) that are managed by both chemical control and cultural practices [82]; and Coffee Bark Disease which only appears to affect *C. arabica* and can be controlled by adjusting soil pH, nutrient content and maintaining good water management practices [11]. As coffee grows in the tropics and subtropics, leaves remain attached to the tree throughout the year, and it is often covered in microbial endophytes that are important for plant health and plant protection [13,83].

As society pays more attention to food safety and environmental health, it is in our collective interest to reduce the use of pesticides in coffee plantations, and finding beneficial microorganisms and microbial-derived compounds have become a popular and important research field [84]. Fungicides are effective against the disease, but continuous and repeated use of fungicides will promote the emergence of resistant populations, [85]. Moreover, much of the existing literature indicate that fungicides are harmful to the ecosystem, and conventional use will also bring the threat of environmental impact [86]. Additionally, the application of fungicides may affect crop physiology through various disturbances, such as reduced growth, disturbance of the development of reproductive organs, changes in nitrogen and/or carbon metabolism, resulting in reduced nutrient utilization for plant growth [87]. In addition, organic coffee production does not use pesticides. Through the conducted field surveys in coffee plantations in Yunnan Province, China in 2020, we observed that fungal pathogens and pests are still serious factors affecting coffee production and quality.

Different fungi play different roles in the ecosystem. Fungal endophytes and their secondary metabolites may play important roles in the prevention and treatment of coffee diseases. Regarding toxigenic fungi, De Almeida et al. [42] showed that endophytes from coffee beans can inhibit fungal growth and ochratoxin-A production. Regarding Coffee Wilt Disease, the non-pathogenic isolates of *Fusarium* are similar to the pathogenic isolates that cause Coffee Wilt Disease, so they can be studied as effective biocontrol agents. If these non-pathogenic fungal isolates produce secondary metabolites compatible with commonly used fungicides, those secondary metabolites can reduce the severity of fungal diseases [88]. It is known that endophytic fungi can produce metal nanoparticles that have high activity

against several microbial pathogens of humans and plants [89]. The direct application of nanoparticles to seeds, leaves or roots can prevent microbial pathogens from invading plants, but the long-term impact of nano-formulations on human health and environmental quality when applied to crop protection is still uncertain [90]. This method of inhibiting pathogens is comparable to that of chemical pesticides, but applications of high amounts of fungicides have led to the emergence of anti-*Plasmodium digitatum* strains [91]. Therefore, nano-formulation is a potential application for controlling diseases. Regarding Coffee Berry Disease, there are almost no chemicals available to control the pathogenic *Colletotrichum* species [92], and its resistance is controlled by three genes, so current research on disease-resistant breeding will likely result in methods to control the disease, but disease-resistant breeding can take up to 30 years [93]. Regarding Coffee Leaf Rust disease is the most serious fungal pathogen responsible for causing leaf diseases [81]. From an environmental and economic point of view, cultivating rust-resistant species is considered the best method. As *Hemileia vastatrix* complex resistance factors and excellent traits cannot be maintained, it has not been studied as extensively as other rust fungi. The resistant varieties in the wild *C. arabica* population are worth doing while, there is little hope of success in finding a new source of resistance from wild *C. arabica* [22,94,95]. Jackson et al. [96] showed that the entomopathogenic and mycoparasitic fungus *Lecanicillium lecanii* has potential as an effective biological control against *Hemileia vastatrix* by reducing spore viability and disease severity. Therefore, the most effective method for controlling fungal pathogens on coffee is via the use of endophytic fungi from coffee as bio-controllers.

Mycotoxins on coffee are considered an important food safety issue. Ochratoxins-A is one of the most important mycotoxin pollutants in agricultural products (cereals, wine, coffee, dried fruits, beer, and animal feed). Due to its toxicity and incidence, its harm and impact on humans and animals continue to cause global concern [97]. *Penicillium* and *Aspergillus* species produce ochratoxins and exist in the forms denoted as A, B, and C; ochratoxin-A is the most ubiquitous and most toxic [98]. Culliao et al. [72] isolated *Fusarium*, *Mucor*, and *Rhizopus* from coffee beans that can produce ochratoxin-A. This mycotoxin is usually found in coffee beans and grains, and it cannot be completely removed by food processing methods because of it is light molecular weight and resistance to heat treatments [31,32]. The production of mycotoxins depends on the degree of fungal growth [99]. Coffee berry borer is responsible for increasing fungal contamination and the content of ochratoxin-A [18], while green coffee beans can be contaminated by fungal pathogens in storage [100]. Suárez-Quiroz et al. (2004) showed that different levels of ochratoxin-A are produced during different processing stages; the percentage of infection in green coffee is usually lower than that observed in parchment paper and dry coffee berries, and almost no ochratoxin-A producing fungi are found in green coffee [101]. The Commission of the European Communities has established the internationally acceptable amount or safe amount of ochratoxin-A in food (including coffee) [102]. According to the Food and Agriculture Organization (FAO), 77 countries have formulated guidelines and regulations on mycotoxins in food (including coffee) and feed to control the levels of mycotoxins, but there are still 13 countries (including Africa) that do not have specific regulations for food safety [103].

A range of approaches for ridding mycotoxins in food is currently in the pipeline due to the acute and chronic toxic effects of food contamination by mycotoxins on humans and animals [104], as detailed below:

Regarding biological control, coffee endophytes *Beauveria bassiana* and *Clonostachys rosea* isolated by Vega et al. [36] can control coffee berry borer, the most destructive coffee pest in the world. This plant defense mediated by endophytes can be developed as a new control mechanism. Screening for endophytic fungi that can inhibit the production of ochratoxin-A by post-harvest pathogens and reduce the content of ochratoxin-A in coffee beans should be the future research directions. The use of the non-toxic *Aspergillus niger* strains for the biological control of toxin-producing black aspergilli has also been successfully applied to grapes [20]. The targeted application of biological control methods on coffee plants can

potentially increase the quality of coffee beans and ensure the safety of consumers [73]. Application of fungal growth inhibitors to coffee beans, such as the polypeptide bacillomycin D isolated from *Bacillus cereus*, can inhibit the growth of *Fusarium* [105].

Regarding physical control, it is known that toxins are produced by a certain level of physical water activity (a_w), nutrition, and temperature in micelle. High temperature and humidity are conducive to the production of toxins, all of which are factors controlling the ochratoxin-A production [73]. Various technical methods such as sun drying, infrared and ultrasonic treatments should be used before coffee beans are stored to keep the moisture content below 12%, as this reduces the risk of fungal growth and contaminations [106]. Since molds that produce mycotoxins can usually only colonize damaged parts of plants, crops must be protected from damage caused by mechanical processes or insects. In order to reduce pre-harvest pollution, minimize weeds and reduce the pressure of the crop itself. There can be an appropriate use of fungicide and pesticide treatments [20]. Gil-Serna et al. [107] shows that optimal conditions of growth and produce ochratoxin-A in *Aspegillus steynii* and *A. westerdijkiae* can be seen at warm temperatures (28–32 °C). Therefore, coffee bean storage containers should be kept clean in a cool and dry place.

Regarding chemical control, antioxidants are a new strategy that is emerging, such as vanillic acid or 4-hydroxybenzoic acid [108]. Essential oils extracted from plants, such as *Thymus vulgaris*, *Aframomum danielli* [109,110], cinnamon, clove leaf [111], thyme, marigold, spearmint, basil, quyssum, caraway, anise, oregano, mint, basil, sage, and coriander [112] have been found to inhibit the growth of ochratoxin producing fungi. Additionally, alkaloids produced by *Piper longum*, and components of sesame oil and turmeric have also been found to suppress both fungal growth and ochratoxin production in a number of ochratoxin-A producing aspergilli [113]. In addition, flavonoids, carotenoids, and saponins can be used as a substitute for synthetic fungicides to control fungal development and ochratoxin-A production in coffee beans [114]. On the other hand, Gómez et al. [115] showed that engineered silver nanoparticles can inhibit the growth of aflatoxigenic and ochratoxigenic fungi. A natural component of rice bran gamma-oryzanol demonstrates antifungal activities against *Fusarium graminearum* [116]. The activated chemicals in cold plasma treatment technology can cause fungal cell damage and death, as well as mycotoxin decomposition. Studies demonstrated that this treatment may eventually provide a sustainable means for processing a large amount of food and animal feed, including coffee [117].

To sum up, the use of antagonistic endophytes as biological control agents has attracted special attention for the management of plant diseases and has minimal impact on the environment [118]. Endophytic fungi isolated from coffee, which produce volatile organic compounds, are promising sources of biotechnological potential. The use of microorganisms as biocontrol agents can reduce the huge use of chemicals, and improve the quality and sustainability of coffee, but biocontrol is still not fully utilized in the coffee industry [119]. This comprehensive review of the fungi reported on coffee based on taxonomy, phylogeny, life mode, host, affected plant part and region is useful for mycologists, pathologists, and farmers. Five major fungal diseases and mycotoxin-producing taxa are also discussed in detail in this review. In addition, we discuss why the yield and quality of coffee are affected by fungi and propose methods to control or eliminate infections to increase yield and improve quality. Furthermore, endophytic fungi and their biological control potential for coffee diseases are also discussed.

4. Materials and Methods

4.1. Fungal Taxa Reported on Coffee

Information on fungal taxa reported on coffee hosts was gathered via Google Scholar, Cyberliber, theses, books, and online literature access sites, and reported fungi were retrieved from the USDA website [120]. In addition, different life modes, hosts, and locations as well as fungi that produce toxins were collected from published articles.

4.2. Tables of Coffee Fungi

Fungal species, genera, and higher ranks were checked and updated using Index Fungorum [121] and MycoBank [122]. Five different tables were made in order to clearly understand the different life modes of fungi reported on coffee. All records of coffee fungi are listed in Supplementary Table S1. Frequently found fungal families and genera on coffee are mentioned in Supplementary Table S2. Different life modes of coffee fungi are listed in Supplementary Table S3. True pathogens, postharvest pathogens, and other fungi reported on coffee are mentioned in Supplementary Table S4. Post-harvest fungal diseases reported on coffee are listed in Supplementary Table S5.

4.3. Graphs of Coffee Fungi

Microsoft Word's pie graph option was used to make the Figure 1. Percentages of different fungal families reported on coffee are shown in Figure 1a. Percentages of different life modes of fungi reported on coffee are displayed in Figure 1b. Percentages of coffee pathogens reported in different countries are shown in Figure 1c. Percentages of most frequently reported fungal pathogenic and toxigenic fungal genera on coffee are displayed in Figure 1d.

Supplementary Materials: The following are available online at <https://www.mdpi.com/article/10.3390/pathogens11040411/s1>, Table S1: Records of coffee fungi. Table S2: Frequently found fungal families and genera on coffee. Table S3: Different life modes of coffee fungi. Table S4: True pathogens, postharvest pathogens and other fungi reported on coffee. Table S5: Post-harvest fungal diseases reported on coffee. References [123–143] are cited in the Supplementary Materials.

Author Contributions: Conceptualization, K.D.H. and S.C.K.; methodology and software, L.L. and S.C.K.; formal analysis and investigation L.L.; resources and data curation S.T.; writing—original draft preparation L.L. and S.C.K.; writing—review and editing L.L. and S.C.K.; visualization and supervision R.S.J., S.L. and J.X.; project administration and funding acquisition K.D.H., S.C.K. and S.T.; All authors have read and agreed to the published version of the manuscript.

Funding: This research was funded by “National Research Council of Thailand, grant for new researcher NRCT5-TRG630010-01, entitled “Biodiversity, taxonomy, phylogeny, and evolution of *Colletotrichum* in northern Thailand”, Thailand Research Fund for the grant “Impact of climate change on fungal diversity and biogeography in the Greater Mekong Subregion, grant number RDG6130001” and the “Department of Sciences and Technology of Yunnan Provincial Government, China”, grant number 202101AS070045.

Data Availability Statement: Main reference website <https://www.ars.usda.gov/> (accessed on 16 February 2022) for the list of coffee fungi.

Acknowledgments: Li Lu thanks the Center for Mountain Futures, Kunming Institute of Botany, Chinese Academy of Science, and Center of Excellence in Fungal Research and Qujing Normal University for providing facilities for the Ph.D. studies and, she also thanks Mae Fah Luang University for providing the postgraduate scholarship for tuition fees. K.D. Hyde thanks Chiang Mai University for the award of Visiting Professor.

Conflicts of Interest: The authors declare no conflict of interest.

References

1. Besttoppers. Available online: <https://besttoppers.com/top-10-widely-consumed-drinks> (accessed on 16 February 2022).
2. Zhang, S.J.; De Bruyn, F.; Pothakos, V.; Contreras, G.F.; Cai, Z.; Moccand, C.; Weckx, S.; De Vuyst, L. Influence of various processing parameters on the microbial community dynamics, metabolomic profiles, and cup quality during wet coffee processing. *Front. Microbiol.* **2019**, *10*, 2621. [CrossRef] [PubMed]
3. Treanor, N.B.; Saunders, J. *Tackling (Illegal) Deforestation in Coffee Supply Chains: What Impact Can Demand-Side Regulations Have?* Forest Policy Trade and Finance Initiative Report; Forest Trends: Washington, DC, USA, 2021.
4. International Coffee Organization. Available online: http://www.ico.org/coffee_prices.asp (accessed on 16 February 2022).
5. Veloso, T.G.R.; Silva, M.D.C.S.D.; Cardoso, W.S.; Guarçoni, R.C.; Kasuya, M.C.M.; Pereira, L.L. Effects of environmental factors on microbiota of fruits and soil of *Coffea arabica* in Brazil. *Sci. Rep.* **2020**, *10*, 1–11. [CrossRef] [PubMed]
6. Coffee Consumption by Country 2022. Available online: <https://worldpopulationreview.com/country-rankings/coffee-consumption-by-country> (accessed on 16 February 2022).

7. Vega, F.E.; Ziska, L.H.; Simpkins, A.; Infante, F.; Davis, A.P.; Rivera, J.A.; Barnaby, J.Y.; Wolf, J. Early growth phase and caffeine content response to recent and projected increases in atmospheric carbon dioxide in coffee (*Coffea arabica* and *C. canephora*). *Sci. Rep.* **2020**, *10*, 1–11. [[CrossRef](#)] [[PubMed](#)]
8. Leitão, A.L. Occurrence of ochratoxin A in coffee: Threads and solutions—A mini-review. *Beverages* **2019**, *5*, 36. [[CrossRef](#)]
9. Harvey, C.A.; Rakotobe, Z.L.; Rao, N.S.; Dave, R.; Razafimahatratra, H.; Rabarijohn, R.H.; Rajaofara, H.; MacKinnon, J.L. Extreme vulnerability of smallholder farmers to agricultural risks and climate change in Madagascar. *Philos. Trans. R. Soc. B Biol. Sci.* **2014**, *369*, 20130089. [[CrossRef](#)] [[PubMed](#)]
10. Pham, Y.; Reardon-Smith, K.; Mushtaq, S.; Cockfield, G. The impact of climate change and variability on coffee production: A systematic review. *Clim. Chang.* **2019**, *156*, 609–630. [[CrossRef](#)]
11. Rutherford, M.A.; Phiri, N. *Pests and Diseases of Coffee in Eastern Africa: A Technical and Advisory Manual*; CAB International: Wallingford, UK, 2006.
12. Ribeyre, F.; Avelino, J. Impact of field pests and diseases on coffee quality. In *Specialty Coffee: Managing Coffee*; International Plant Nutrition Institute; IPNI [Southeast Asia]: Penang, Malaysia, 2012; pp. 151–176.
13. Santamaría, J.; Bayman, P. Fungal epiphytes and endophytes of coffee leaves (*Coffea arabica*). *Microb. Ecol.* **2005**, *50*, 1–8. [[CrossRef](#)]
14. Muller, R.A.; Berry, D.; Avelino, J.; Biéysse, D. Coffee diseases. In *Coffee: Growing, Processing, Sustainable Production. A Guidebook for Growers, Processors, Traders and Researchers*; Germany Wiley-VCH Verlag GmbH & Co.: Weinheim, Germany, 2009; pp. 495–549.
15. Botrel, D.A.; Laborde, M.C.F.; De Medeiros, F.H.V.; Resende, M.L.V.; Júnio, P.M.R.; Pascholati, S.F.; Gusmão, L.F.P. Saprobic fungi as biocontrol agents of halo blight (*Pseudomonas syringae* pv. *garcae*) in coffee clones. *Coffee Sci.* **2018**, *13*, 283–291. [[CrossRef](#)]
16. Torres-Mendoza, D.; Ortega, H.E.; Cubilla-Rios, L. Patents on endophytic fungi related to secondary metabolites and biotransformation applications. *J. Fungi* **2020**, *6*, 58. [[CrossRef](#)] [[PubMed](#)]
17. Yan, L.; Zhu, J.; Zhao, X.; Shi, J.; Jiang, C.; Shao, D. Beneficial effects of endophytic fungi colonization on plants. *Appl. Microbiol. Biotechnol.* **2019**, *103*, 1–14. [[CrossRef](#)] [[PubMed](#)]
18. da Silva, S.A.; Pereira, R.G.F.A.; Lira, N.D.A.; da Glória, E.M.; Chalfoun, S.M.; Batista, L.R. Fungi associated to beans infested with coffee berry borer and the risk of ochratoxin A. *Food Control* **2020**, *113*, 107204. [[CrossRef](#)]
19. Huang, X.; Ren, J.; Li, P.; Feng, S.; Dong, P.; Ren, M. Potential of microbial endophytes to enhance the resistance to postharvest diseases of fruit and vegetables. *J. Sci. Food Agric.* **2020**, *101*, 1744–1757. [[CrossRef](#)] [[PubMed](#)]
20. Varga, J.; Kocsubé, S.; Péteri, Z.; Vagvolgyi, C.; Toth, B. Chemical, physical and biological approaches to prevent ochratoxin induced toxicoses in humans and animals. *Toxins* **2010**, *2*, 1718–1750. [[CrossRef](#)] [[PubMed](#)]
21. McCook, S. Global rust belt: *Hemileia vastatrix* and the ecological integration of world coffee production since 1850. *J. Glob. Hist.* **2006**, *1*, 177–195. [[CrossRef](#)]
22. Talhinhos, P.; Batista, D.; Diniz, I.; Vieira, A.; Silva, D.N.; Loureiro, A.; Tavares, S.; Pereira, A.P.; Azinheira, H.G.; Guerra-Guimarães, L. The coffee leaf rust pathogen *Hemileia vastatrix*: One and a half centuries around the tropics. *Mol. Plant Pathol.* **2017**, *18*, 1039–1051. [[CrossRef](#)] [[PubMed](#)]
23. Coates, L.; Johnson, G. Postharvest diseases of fruit and vegetables. In *Plant Pathogens and Plant Diseases*; Elsevier Science: Amsterdam, The Netherlands, 1997; pp. 533–548.
24. Roberto, S.R.; Youssef, K.; Hashim, A.F.; Ippolito, A. Nanomaterials as alternative control means against postharvest diseases in fruit crops. *Nanomaterials* **2019**, *9*, 1752. [[CrossRef](#)]
25. Ismaiel, A.A.; Papenbrock, J. Mycotoxins: Producing fungi and mechanisms of phytotoxicity. *Agriculture* **2015**, *5*, 492–537. [[CrossRef](#)]
26. Strobel, G. The emergence of endophytic microbes and their biological promise. *J. Fungi* **2018**, *4*, 57. [[CrossRef](#)]
27. Miller, J. *Mycotoxin in Grain*, Eagan Press: St. Paul, MA, USA, 1994; 326.
28. Alvindia, D.G.; de Guzman, M.F. Survey of Philippine coffee beans for the presence of ochratoxigenic fungi. *Mycotoxin Res.* **2016**, *32*, 61–67. [[CrossRef](#)] [[PubMed](#)]
29. Daou, R.; Joubrane, K.; Maroun, R.G.; Khabbaz, L.R.; Ismail, A.; El Khoury, A. Mycotoxins: Factors influencing production and control strategies. *AIMS Agric. Food* **2021**, *6*, 416–447. [[CrossRef](#)]
30. Proctor, R.H.; McCormick, S.P.; Kim, H.-S.; Cardoza, R.E.; Stanley, A.M.; Lindo, L.; Kelly, A.; Brown, D.W.; Lee, T.; Vaughan, M.M. Evolution of structural diversity of trichothecenes, a family of toxins produced by plant pathogenic and entomopathogenic fungi. *PLoS Pathog.* **2018**, *14*, e1006946. [[CrossRef](#)]
31. Khan, S.A.; Venancio, E.J.; Ono, M.A.; Fernandes, E.V.; Hirooka, E.Y.; Shimizu, C.F.; Oba, A.; Flaiban, K.K.M.C.; Itano, E.N. Effects of subcutaneous ochratoxin-A exposure on immune system of broiler chicks. *Toxins* **2019**, *11*, 264. [[CrossRef](#)] [[PubMed](#)]
32. Agriopoulou, S.; Stamatelopoulou, E.; Varzakas, T. Advances in occurrence, importance, and mycotoxin control strategies: Prevention and detoxification in foods. *Foods* **2020**, *9*, 137. [[CrossRef](#)] [[PubMed](#)]
33. Silva, C.F.; Schwan, R.F.; Dias, E.S.; Wheals, A.E. Microbial diversity during maturation and natural processing of coffee cherries of *Coffea arabica* in Brazil. *Int. J. Food Microbiol.* **2000**, *60*, 251–260. [[CrossRef](#)]
34. Bokhari, F.M. Mycotoxins and toxigenic fungi in Arabic coffee beans in Saudi Arabia. *Adv. Biol. Res.* **2007**, *1*, 56–66.
35. Rezende, E.D.F.; Borges, J.G.; Cirillo, M.; Prado, G.; Paiva, L.C.; Batista, L. Ochratoxigenic fungi associated with green coffee beans (*Coffea arabica* L.) in conventional and organic cultivation in Brazil. *Braz. J. Microbiol.* **2013**, *44*, 377–384. [[CrossRef](#)]
36. Vega, F.E.; Posada, F.; Aime, M.C.; Pava-Ripoll, M.; Infante, F.; Rehner, S.A. Entomopathogenic fungal endophytes. *Biol. Control* **2008**, *46*, 72–82. [[CrossRef](#)]

37. Aldina, R.F.; Indarti, S.; Wibowo, A. *Pathogenicity of Nematofagous Fungus for Control of Pratylenchus Coffeae Nematodes on Coffee Plants*; Springer: Cham, Germany, 2017; pp. 243–251.
38. Schulz, B.; Boyle, C. *What Are Endophytes? Microbial Root Endophytes*; Springer: Berlin/Heidelberg, Germany, 2006.
39. Goates, B.J.; Mercier, J. Effect of biofumigation with volatiles from *Muscodor albus* on the viability of *Tilletia* spp. teliospores. *Can. J. Microbiol.* **2009**, *55*, 203–206. [[CrossRef](#)]
40. Monteiro, M.C.P.; Alves, N.M.; De Queiroz, M.V.; Pinho, D.B.; Pereira, O.L.; De Souza, S.M.C.; Cardoso, P.G. Antimicrobial activity of endophytic fungi from coffee plants. *Biosci. J.* **2017**, *33*, 381–389. [[CrossRef](#)]
41. Samarakoon, M.C.; Thongbai, B.; Hyde, K.D.; Broenstrup, M.; Beutling, U.; Lambert, C.; Miller, A.N.; Liu, J.K.; Promputtha, I.; Stadler, M. Elucidation of the life cycle of the endophytic genus *Muscodor* and itEvaluation of the effects of temperature on processed coffee beans in the presence of fungi and ochratoxin As transfer to Induratia in Induratiaceae fam. nov., based on a polyphasic taxonomic approach. *Fungal Divers.* **2020**, *101*, 177–210. [[CrossRef](#)]
42. de Almeida, Â.B.; Corrêa, I.P.; Furuie, J.L.; de Farias Pires, T.; do Rocio Dalzoto, P.; Pimentel, I.C. Inhibition of growth and ochratoxin-A production in *Aspergillus* species by fungi isolated from coffee beans. *Braz. J. Microbiol.* **2019**, *50*, 1091–1098. [[CrossRef](#)]
43. Eida, M.F.; Nagaoka, T.; Wasaki, J.; Kouno, K. Evaluation of cellulolytic and hemicellulolytic abilities of fungi isolated from coffee residue and sawdust composts. *Microbes Environ.* **2011**, *26*, 220–227. [[CrossRef](#)] [[PubMed](#)]
44. Prihastuti, H.; Cai, L.; Chen, H.; McKenzie, E.; Hyde, K. Characterization of *Colletotrichum* species associated with coffee berries in northern Thailand. *Fungal Div.* **2009**, *39*, 89–109.
45. Ma, L.-J.; Van Der Does, H.C.; Borkovich, K.A.; Coleman, J.J.; Daboussi, M.-J.; Di Pietro, A.; Dufresne, M.; Freitag, M.; Grabherr, M.; Henrissat, B.; et al. Comparative genomics reveals mobile pathogenicity chromosomes in *Fusarium*. *Nature* **2010**, *464*, 367–373. [[CrossRef](#)]
46. Peck, L.; Nowell, R.; Flood, J.; Ryan, M.; Barraclough, T. Historical genomics reveals the evolutionary mechanisms behind multiple outbreaks of the host-specific coffee wilt pathogen *Fusarium xylarioides*. *bioRxiv* **2020**, *22*, 1–24. [[CrossRef](#)]
47. Rutherford, M.A. Current knowledge of coffee wilt disease, a major constraint to coffee production in Africa. *Phytopathology* **2006**, *96*, 663–666. [[CrossRef](#)] [[PubMed](#)]
48. Musoli, P.C.; Cilas, C.; Pot, D.; Nabaggala, A.; Nakendo, S.; Pande, J.; Charrier, A.; Leroy, T.; Bieysse, D. Inheritance of resistance to coffee wilt disease (*Fusarium xylarioides* Steyaert) in Robusta coffee (*Coffea canephora* Pierre) and breeding perspectives. *Tree Genet. Genomes* **2012**, *9*, 351–360. [[CrossRef](#)]
49. Gichuru, E.; Alwora, G.; Gimase, J.; Kathurima, C. Coffee leaf rust (*Hemileia vastatrix*) in Kenya—A review. *Agronomy* **2021**, *11*, 2590. [[CrossRef](#)]
50. De Andrade, C.C.L.; Vicentin, R.P.; Costa, J.R.; Perina, F.J.; De Resende, M.L.V.; Alves, E. Alterations in antioxidant metabolism in coffee leaves infected by *Cercospora coffeicola*. *Ciênc. Rural* **2016**, *46*, 1764–1770. [[CrossRef](#)]
51. Otieno, W. *Armillaria Root Rot of Tea in Kenya: Characterization of the Pathogen and Approaches to Disease Management*; Wageningen University and Research; Wageningen University: Wageningen, The Netherlands, 2002. Available online: <https://www.semanticscholar.org/paper/Armillaria-root-rot-of-tea-in-Kenya-%3A-of-the-and-to-Otieno/c0f9753b5d198b0a8eb412d40b560c58304eef02#citing-papers> (accessed on 16 February 2022).
52. Fang, Y.; Ramasamy, R.P. Current and prospective methods for plant disease detection. *Biosensors* **2015**, *5*, 537–561. [[CrossRef](#)] [[PubMed](#)]
53. López-Lima, D.; Carrión, G.; Sánchez-Nava, P.; Desgarennes, D.; Villain, L. Fungal diversity and *Fusarium oxysporum* pathogenicity associated with coffee corky-root disease in Mexico. *Rev. Fac. Cienc. Agrar. UNCuyo* **2020**, *52*, 276–292.
54. Hariharan, G.; Prasannath, K. Recent advances in molecular diagnostics of fungal plant pathogens: A mini review. *Front. Cell. Infect. Microbiol.* **2021**, *10*. [[CrossRef](#)]
55. Senanayake, I.; Rathnayaka, A.; Marasinghe, D.; Calabon, M.; Gentekaki, E.; Lee, H.; Hurdeal, V.; Pem, D.; Dissanayake, L.; Wijesinghe, S. Morphological approaches in studying fungi: Collection, examination, isolation, sporulation and preservation. *Mycosphere* **2020**, *11*, 2678–2754. [[CrossRef](#)]
56. Arneson, P. *Coffee Rust*; Plant Health Instructor; The American Phytopathological Society (APS): St. Paul, MN, USA, 2000.
57. Abu Mettleq, A.S.; Abu-Naser, S.S. A rule based system for the diagnosis of coffee diseases. *Int. J. Acad. Inf. Syst. Res. (IJAIRS)* **2019**, *3*, 1–8.
58. Hailu, B.Z. *Fungal Disease Dynamics, Genetic Variation and Biodiversity-Yield Relationships: A Study Along a Gradient of Coffee Management in Southwestern Ethiopia*. Ph.D. Thesis, Stockholm University, Faculty of Science, Department of Ecology, Environment and Plant Sciences, Stockholm, Sweden, 2020.
59. de Resende, M.L.V.; Pozza, E.A.; Reichel, T.; Botelho, D.M.S. Strategies for coffee leaf rust management in organic crop systems. *Agronomy* **2021**, *11*, 1865. [[CrossRef](#)]
60. Lemma, D.T.; Abewoy, D. Review on integrated pest management of coffee berry disease and coffee berry borer. *Int. J. Plant Breed. Crop Sci.* **2021**, *8*, 1001–1008.
61. Bailey, J.A. *Colletotrichum: Biology, Pathology and Control*; CAB International: Wallingford, UK, 1992.
62. De Silva, D.D.; Crous, P.W.; Ades, P.K.; Hyde, K.D.; Taylor, P.W.J. Life styles of *Colletotrichum* species and implications for plant biosecurity. *Fungal Biol. Rev.* **2017**, *31*, 155–168. [[CrossRef](#)]

63. Wassie, A.K. Integrated diseased management on coffee wilt disease caused by *Fusarium xylarioides* and its distribution in Ethiopian review. *Agric. Res. Technol. Open Access J.* **2019**, *23*, 302–308. [[CrossRef](#)]
64. Wrigley, G. *Coffee*; Longman Scientific & Technical: Harlow, UK; Essex, UK, 1988.
65. Alemu, T. A review of coffee wilt disease, *Gibberella xylarioides* (*Fusarium xylarioides*) in Africa with special reference to Ethiopia. *Ethiop. J. Biol. Sci.* **2012**, *11*, 65–103.
66. Nelson, S.C. *Cercospora Leaf Spot and Berry Blight of Coffee*; Plant Disease; University of Hawaii: Mānoa, Hawaii, 2008. Available online: <https://www.ctahr.hawaii.edu/oc/freepubs/pdf/PD-41.pdf> (accessed on 16 February 2022).
67. Vale, P.A.S.; De Resende, M.L.V.; Botelho, D.M.D.S.; De Andrade, C.C.L.; Alves, E.; Ogoshi, C.; Guimarães, S.D.S.C.; Pfenning, L.H. Epitypification of *Cercospora coffeicola* and its involvement with two different symptoms on coffee leaves in Brazil. *Eur. J. Plant Pathol.* **2020**, *159*, 399–408. [[CrossRef](#)]
68. Schwartz, H.F.; Gent, D.H. *Cercospora leaf spot* (Cucumber, Melon, Pumpkin, Squash, and Zucchini). In *High Plains IPM Guide*; University of Wyoming: Laramie, WY, USA; University of Nebraska: Lincoln, NE, USA; Colorado State University: Fort Collins, CO, USA; Montana State University: Bozeman, MT, USA, 2007. Available online: <http://wiki.bugwood.org/uploads/CercosporaLeafSpot-Cucurbits.pdf> (accessed on 16 February 2022).
69. Souza, A.G.C.; Rodrigues, F.; Maffia, L.A.; Mizubuti, E.S.G. Infection process of *Cercospora coffeicola* on coffee leaf. *J. Phytopathol.* **2010**, *159*, 6–11. [[CrossRef](#)]
70. Gezahgne, A.; Coetzee, M.P.A.; Wingfield, B.D.; Wingfield, M.J.; Roux, J. Identification of the *Armillaria* root rot pathogen in Ethiopian plantations. *For. Pathol.* **2004**, *34*, 133–145. [[CrossRef](#)]
71. Jayawardena, R.S.; Hyde, K.D.; Chen, Y.J.; Papp, V.; Palla, B.; Papp, D.; Bhunjun, C.S.; Hurdeal, V.G.; Senwana, C.; Manawasinghe, I.S.; et al. One stop shop IV: Taxonomic update with molecular phylogeny for important phytopathogenic genera: 76–100 (2020). *Fungal Divers.* **2020**, *103*, 87–218. [[CrossRef](#)]
72. Culliao, A.G.L.; Barcelo, J.M. Fungal and mycotoxin contamination of coffee beans in Benguet province, Philippines. *Food Addit. Contam. Part A* **2015**, *32*, 250–260. [[CrossRef](#)]
73. Dos Santos, D.G.; Coelho, C.C.d.S.; Ferreira, A.B.R.; Freitas-Silva, O. Brazilian coffee production and the future microbiome and mycotoxin profile considering the climate change Scenario. *Microorganisms* **2021**, *9*, 858. [[CrossRef](#)] [[PubMed](#)]
74. Jard, G.; Liboz, T.; Mathieu, F.; Guyonvarch, A.; Lebrihi, A. Review of mycotoxin reduction in food and feed: From prevention in the field to detoxification by adsorption or transformation. *Food Addit. Contam. Part A* **2011**, *28*, 1590–1609. [[CrossRef](#)] [[PubMed](#)]
75. Shuping, D.; Eloff, J. The use of plants to protect plants and food against fungal pathogens: A review. *Afr. J. Tradit. Complement. Altern. Med.* **2017**, *14*, 120–127. [[CrossRef](#)]
76. Takundwa, M.; Ruzvidzo, O.; Uzabakirho, J.; Titus, P.; Chimwamurombe, P. Molecular identification of fungal species associated with leaf lesions of Maramba bean seedlings in Namibia. *Afr. J. Microbiol. Res.* **2015**, *9*, 194–200. [[CrossRef](#)]
77. Cerda, R.; Avelino, J.; Gary, C.; Tixier, P.; Lechevallier, E.; Allinne, C. Primary and secondary yield losses caused by pests and diseases: Assessment and modeling in coffee. *PLoS ONE* **2017**, *12*, e0169133. [[CrossRef](#)] [[PubMed](#)]
78. Lemessa, F.; Abera, A.; Adunga, G.; Garedew, W. Association of mycoflora with coffee (*Coffea arabica* L.) beans at limmu coffee plantation, Southwestern Ethiopia. *Plant Pathol. J.* **2015**, *14*, 136–141. [[CrossRef](#)]
79. Hindorf, H.; Omondi, C.O. A review of three major fungal diseases of *Coffea arabica* L. in the rainforests of Ethiopia and progress in breeding for resistance in Kenya. *J. Adv. Res.* **2011**, *2*, 109–120. [[CrossRef](#)]
80. De Paula, P.V.A.A.; Pozza, E.A.; Santos, L.A.; Chaves, E.; Maciel, M.P.; Paula, J.C.A. Diagrammatic scales for assessing brown eye spot (*Cercospora coffeicola*) in red and yellow coffee cherries. *J. Phytopathol.* **2016**, *164*, 791–800. [[CrossRef](#)]
81. Djuikem, C.; Grognard, F.; Touzeau, S.; Bowong, S. Modelling and controlling fungus *Hemileia vastatrix*, a coffee pest. In Proceedings of the BIOMATH 2019-International Conference on Mathematical Methods and Models in Biosciences, Bedlevo, Poland, 16–22 June 2019; pp. 16–24.
82. Douglas, S.M. Leaf spot diseases of ornamental trees and shrubs. In *The Connecticut Experiment Station Report*; University of Minnesota Extension: Falcon Heights, MN, USA, 2012.
83. Ghosh, S.K.; Chaudhary, M.; Manjunatha, N. 14 Endophytes: A potential bio-agent for the plant protection. In *Innovative Pest Management Approaches for the 21st Century: Harnessing Automated Unmanned Technologies*; Springer: Singapore, 2020; p. 273.
84. Morelli, M.; Bahar, O.; Papadopoulou, K.K.; Hopkins, D.L.; Obradovic, A. Editorial: Role of endophytes in plant health and defense against pathogens. *Front. Plant Sci.* **2020**, *11*. [[CrossRef](#)] [[PubMed](#)]
85. Salcedo-Sarmiento, S.; Aucique-Pérez, C.E.; Silveira, P.R.; Colmán, A.A.; Silva, A.L.; Mansur, P.S.C.; Rodrigues, F.; Evans, H.C.; Barreto, R.W. Elucidating the interactions between the rust *Hemileia vastatrix* and a *Calonectria* mycoparasite and the coffee plant. *iScience* **2021**, *24*, 102352. [[CrossRef](#)] [[PubMed](#)]
86. Mahmood, I.; Imadi, S.R.; Shazadi, K.; Gul, A.; Hakeem, K.R. *Effects of Pesticides on Environment*; Plant, Soil and Microbes; Springer: Berlin/Heidelberg, Germany, 2016; pp. 253–269.
87. Petit, A.-N.; Fontaine, F.; Vatsa, P.; Clément, C.; Vaillant-Gaveau, N. Fungicide impacts on photosynthesis in crop plants. *Photosynth. Res.* **2012**, *111*, 315–326. [[CrossRef](#)] [[PubMed](#)]
88. Patil, S.; Sriram, S. Biological control of *Fusarium* wilt in crop plants using non-pathogenic isolates of *Fusarium* species. *Indian Phytopathol.* **2020**, *73*, 11–19. [[CrossRef](#)]
89. Naik, B.S. Biosynthesis of silver nanoparticles from endophytic fungi and their role in plant disease management. *Microb. Endophytes.* **2020**, *16*, 307–321. [[CrossRef](#)]

90. Khan, M.R.; Ahamad, F.; Rizvi, T.F. Chapter 8—Effect of nanoparticles on plant pathogens. In *Advances in Phytonanotechnology*; Academic Press: Cambridge, MA, USA, 2019; pp. 215–240.
91. Ferreira, F.V.; Herrmann-Andrade, A.M.; Calabrese, C.D.; Bello, F.; Vázquez, D.; Musumeci, M.A. Effectiveness of *Trichoderma* strains isolated from the rhizosphere of citrus tree to control *Alternaria alternata*, *Colletotrichum gloeosporioides* and *Penicillium digitatum* A21 resistant to pyrimethanil in post-harvest oranges (*Citrus sinensis* L.(Osbeck)). *J. Appl. Microbiol.* **2020**, *129*, 712–727. [[CrossRef](#)]
92. Dowling, M.; Peres, N.; Villani, S.; Schnabel, G. Managing *Colletotrichum* on fruit crops: A “complex” challenge. *Plant Dis.* **2020**, *104*, 2301–2316. [[CrossRef](#)]
93. Gimase, J.M.; Thagana, W.M.; Omondi, C.O.; Cheserek, J.J.; Gichimu, B.M.; Gichuru, E.K. Quantitative trait loci (QTL) mapping of resistance to coffee berry disease (*Colletotrichum kahawae* Waller Bridge) in *Coffea arabica* L. variety Rume Sudan. *Afr. J. Agric. Res.* **2020**, *16*, 1184–1194. [[CrossRef](#)]
94. Silva, M.D.C.; Várzea, V.; Guerra-Guimarães, L.; Gil Azinheira, H.; Fernandez, D.; Petitot, A.-S.; Bertrand, B.; Lashermes, P.; Nicole, M. Coffee resistance to the main diseases: Leaf rust and coffee berry disease. *Braz. J. Plant Physiol.* **2006**, *18*, 119–147. [[CrossRef](#)]
95. Davis, A.P.; Gole, T.W.; Baena, S.; Moat, J. The impact of climate change on indigenous Arabica coffee (*Coffea arabica*): Predicting future trends and identifying priorities. *PLoS ONE* **2012**, *7*, e47981. [[CrossRef](#)]
96. Jackson, D.; Skillman, J.; Vandermeer, J. Indirect biological control of the coffee leaf rust, *Hemileia vastatrix*, by the entomogenous fungus *Lecanicillium lecanii* in a complex coffee agroecosystem. *Biol. Control* **2012**, *61*, 89–97. [[CrossRef](#)]
97. Joshi, V.; Pandit, A.; Vaidya, D. Ochratoxin-A in food: An overview. *Int. J. Food Ferment. Technol.* **2017**, *7*, 13–24. [[CrossRef](#)]
98. McQueen, C. *Comprehensive Toxicology*; Elsevier: Amsterdam, The Netherlands, 2017.
99. Santiago, W.D.; Teixeira, A.R.; de Andrade Santiago, J.; Lopes, A.C.A.; Brandão, R.M.; Barbosa, R.B.; Caetano, A.R.S.; das Graças Cardoso, M.; Resende, M.L.V. Standardization of an analytical method to quantify ochratoxin-A in green coffee beans by high performance liquid chromatography. *Res. Soc. Dev.* **2020**, *9*, e39985070. [[CrossRef](#)]
100. Viegas, C.; Pacífico, C.; Faria, T.; De Oliveira, A.C.; Caetano, L.A.; Carolino, E.; Gomes, A.; Viegas, S. Fungal contamination in green coffee beans samples: A public health concern. *J. Toxicol. Environ. Health Part A* **2017**, *80*, 719–728. [[CrossRef](#)]
101. Suárez-Quiroz, M.; González-Rios, O.; Barel, M.; Guyot, B.; Schorr-Galindo, S.; Guiraud, J.P. Study of ochratoxin-A producing strains in coffee processing. *Int. J. Food Sci. Technol.* **2004**, *39*, 501–507. [[CrossRef](#)]
102. Varga, J.; Kocsubé, S.; Péteri, Z.; Samson, R. *An Overview of Ochratoxin Research*; CABI Publishers: London, UK, 2009.
103. Cinar, A.; Onbaşı, E. Mycotoxins: The hidden danger in foods. *Mycotoxins Food Saf.* **2020**, 1–21. [[CrossRef](#)]
104. Shanakhat, H.; Sorrentino, A.; Raiola, A.; Romano, A.; Masi, P.; Cavella, S. Current methods for mycotoxins analysis and innovative strategies for their reduction in cereals: An overview. *J. Sci. Food Agric.* **2018**, *98*, 4003–4013. [[CrossRef](#)] [[PubMed](#)]
105. Sun, J.; Li, W.; Liu, Y.; Lin, F.; Huang, Z.; Lu, F.; Bie, X.; Lu, Z. Growth inhibition of *Fusarium graminearum* and reduction of deoxynivalenol production in wheat grain by bacillomycin D. *J. Stored Prod. Res.* **2018**, *75*, 21–28. [[CrossRef](#)]
106. Vieira, T.; Cunha, S.; Casal, S. Mycotoxins in coffee. In *Coffee in Health and Disease Prevention*; Elsevier: Amsterdam, The Netherlands, 2015; pp. 225–233.
107. Gil-Serna, J.; Vázquez, C.; Sandino, F.G.; Valle, A.M.; González-Jaén, M.T.; Patiño, B. Evaluation of growth and ochratoxin A production by *Aspergillus steynii* and *Aspergillus westerdijkiae* in green-coffee based medium under different environmental conditions. *Food Res. Int.* **2014**, *61*, 127–131. [[CrossRef](#)]
108. Palumbo, J.D.; O’Keeffe, T.L.; Mahoney, N.E. Inhibition of ochratoxin A production and growth of *Aspergillus* species by phenolic antioxidant compounds. *Mycopathologia* **2007**, *164*, 241–248. [[CrossRef](#)] [[PubMed](#)]
109. Aroyeun, S.; Adegoke, G. Reduction of ochratoxin-A (OTA) in spiked cocoa powder and beverage using aqueous extracts and essential oils of *Aframomum danielli*. *Afr. J. Biotechnol.* **2007**, *6*, 612–616.
110. Nguefack, J.; Nguikwie, S.; Fotio, D.; Dongmo, B.; Zollo, P.A.; Leth, V.; Nkengfack, A.; Poll, L. Fungicidal potential of essential oils and fractions from *Cymbopogon citratus*, *Ocimum gratissimum* and *Thymus vulgaris* to control *Alternaria padwickii* and *Bipolaris oryzae*, two seed borne fungi of rice (*Oryza sativa* L.). *J. Essent. Oil Res.* **2007**, *19*, 581–587. [[CrossRef](#)]
111. Magan, N.; Aldred, D. Post-harvest control strategies: Minimizing mycotoxins in the food chain. *Int. J. Food Microbiol.* **2007**, *119*, 131–139. [[CrossRef](#)]
112. Basílico, M.Z.; Basílico, J.C. Inhibitory effects of some spice essential oils on *Aspergillus ochraceus* NRRL 3174 growth and ochratoxin-A production. *Lett. Appl. Microbiol.* **1999**, *29*, 238–241. [[CrossRef](#)] [[PubMed](#)]
113. Lee, S.-E.; Park, B.S.; Bayman, P.; Baker, J.L.; Choi, W.S.; Campbell, B.C. Suppression of ochratoxin biosynthesis by naturally occurring alkaloids. *Food Addit. Contam.* **2007**, *24*, 391–397. [[CrossRef](#)] [[PubMed](#)]
114. Kouadio, I.A.; Ban, L.K.; Dosso, M.B. Prevention of ochratoxin A (OTA) production in coffee beans using natural antifungal derived from *Solanum indicum* L. green berries. *J. Food Secur.* **2019**, *7*, 63–71. [[CrossRef](#)]
115. Gómez, J.V.; Tarazona, A.; Mateo, F.; Jiménez, M.; Mateo, E.M. Potential impact of engineered silver nanoparticles in the control of aflatoxins, ochratoxin A and the main aflatoxigenic and ochratoxigenic species affecting foods. *Food Control* **2019**, *101*, 58–68. [[CrossRef](#)]
116. Bemvenuti, R.; Rodrigues, M.H.; Furlong, E. Efficiency of γ -oryzanol against the complex *Fusarium graminearum* growth and mycotoxins production. *Food Sci. Technol.* **2019**, *39*, 240–246. [[CrossRef](#)]

117. Misra, N.N.; Yadav, B.; Roopesh, M.S.; Jo, C. Cold plasma for effective fungal and mycotoxin control in foods: Mechanisms, inactivation effects, and applications. *Compr. Rev. Food Sci. Food Saf.* **2019**, *18*, 106–120. [CrossRef] [PubMed]
118. De Silva, N.I.; Brooks, S.; Lumyong, S.; Hyde, K.D. Use of endophytes as biocontrol agents. *Fungal Biol. Rev.* **2019**, *33*, 133–148. [CrossRef]
119. Duong, B.; Marraccini, P.; Maeght, J.-L.; Vaast, P.; Lebrun, M.; Duponnois, R. Coffee microbiota and its potential use in sustainable crop management. A review. *Front. Sustain. Food Syst.* **2020**, *4*, 237. [CrossRef]
120. United States Department of Agriculture. Available online: <https://nt.ars-grin.gov/fungaldatabases/fungushost/fungushost.cfm> (accessed on 16 February 2022).
121. Index Fungorum. 2022. Available online: <http://www.indexfungorum.org/Names/IndexFungorumPartnership.htm> (accessed on 16 February 2022).
122. Mycobank. 2022. Available online: <https://www.mycobank.org/> (accessed on 16 February 2022).
123. Noonim, P.; Mahakarnchanakul, W.; Nielsen, K.F.; Frisvad, J.C.; Samson, R.A. Isolation, identification and toxigenic potential of ochratoxin A-producing *Aspergillus* species from coffee beans grown in two regions of Thailand. *Int. J. Food Microbiol.* **2008**, *128*, 197–202. [CrossRef] [PubMed]
124. Estupiñan-López, L.; Campos, V.P.; da Silva Júnior, J.C.; Pedroso, M.P.; Terra, W.C.; da Silva, J.C.P.; de Paula, L.L. Volatile compounds produced by *Fusarium* spp. isolated from *Meloidogyne paranaensis* egg masses and corticous root tissues from coffee crops are toxic to *Meloidogyne incognita*. *Trop. Plant Pathol.* **2018**, *43*, 183–193. [CrossRef]
125. Sousa, T.; Batista, L.; Passamani, F.; Lira, N.; Cardoso, M.; Santiago, W.; Chalfoun, S. Evaluation of the effects of temperature on processed coffee beans in the presence of fungi and ochratoxin A. *J. Food Saf.* **2019**, *39*, e12584. [CrossRef]
126. Kuntawee, S.; Akarapisan, A. Isolation and identification of *Aspergillus* species producing Ochratoxin a in Arabica coffee beans. *J. Agric. Technol.* **2015**, *11*, 1235–1242.
127. Batista, L.R.; Chalfoun, S.M.; Prado, G.; Schwan, R.F.; Wheals, A.E. Toxigenic fungi associated with processed (green) coffee beans (*Coffea arabica* L.). *Int. J. Food Microbiol.* **2003**, *85*, 293–300. [CrossRef]
128. Djadjiti, N.; Aziz, M.A.; Esther, O.K.; Dane, S. Isolation and Identification of Fungal Pathogens Contaminating Some Coffee Powder Marketed in the City of Abuja. *J. Res. Med. Dent. Sci.* **2020**, *8*, 172–175.
129. Pasin, L.A.A.P.; Almeida, J.R.d.; Abreu, M.S.d. Fungos associados a grãos de cinco cultivares de café (*Coffea arabica* L.). *Acta. Bot. Bras.* **2009**, *23*, 1129–1132. [CrossRef]
130. Casas-Junco, P.P.; Ragazzo-Sánchez, J.A.; de Jesus Ascencio-Valle, F.; Calderón-Santoyo, M. Determination of potentially mycotoxigenic fungi in coffee (*Coffea arabica* L.) from Nayarit. *Food Sci. Biotechnol.* **2018**, *27*, 891–898. [CrossRef] [PubMed]
131. Chaves, F.C.; Gianfagna, T.J.; Aneja, M.; Posada, F.; Peterson, S.W.; Vega, F.E. *Aspergillus oryzae* NRRL 35191 from coffee, a non-toxigenic endophyte with the ability to synthesize kojic acid. *Mycol. Prog.* **2012**, *11*, 263–267. [CrossRef]
132. González-Osorio, H.; Botero, C.E.G.; Rivera, R.D.M.; Vega, N.W.O. Screening for phosphate-solubilizing fungi from colombian andisols cultivated with coffee (*Coffea arabica* L.). *Coffee Sci.* **2020**, e151666. [CrossRef]
133. Hongsanan, S.; Tian, Q.; Hyde, K.; Chomnunti, P. Two new species of sooty moulds, *Capnodium coffeicola* and *Conidiocarpus plumeriae* in Capnodiaceae. *Mycosp* **2015**, *6*, 814–824. [CrossRef]
134. Maharachchikumbura, S.; Haituk, S.; Pakdeeniti, P.; Al-Sadi, A.; Hongsanan, S.; Chomnunti, P.; Cheewangkoon, R. *Phaeosaccardinula coffeicola* and *Trichomerium chiangmaiensis*, two new species of Chaetothyriales (Eurotiomycetes) from Thailand. *Mycosphere* **2018**, *9*, 769–778. [CrossRef]
135. Bongiorno, V.A.; Rhoden, S.A.; Garcia, A.; Polonio, J.C.; Azevedo, J.L.; Pereira, J.O.; Pamphile, J.A. Genetic diversity of endophytic fungi from *Coffea arabica* cv. IAPAR-59 in organic crops. *Ann. Microbiol.* **2016**, *66*, 855–865. [CrossRef]
136. Oliveira, R.; Souza, R.; Lima, T.; Cavalcanti, M. Endophytic fungal diversity in coffee leaves (*Coffea arabica*) cultivated using organic and conventional crop management systems. *Mycosphere* **2014**, *5*, 523–530. [CrossRef]
137. Saucedo-García, A.; Anaya, A.L.; Espinosa-García, F.J.; González, M.C. Diversity and communities of foliar endophytic fungi from different agroecosystems of *Coffea arabica* L. in two regions of Veracruz, Mexico. *PLoS ONE* **2014**, *9*, e98454. [CrossRef]
138. Fernandes, M.d.R.V.; Silva, T.A.C.; Pfenning, L.H.; Costa-Neto, C.M.d.; Heinrich, T.A.; Alencar, S.M.d.; Lima, M.A.d.; Ikegaki, M. Biological activities of the fermentation extract of the endophytic fungus *Alternaria alternata* isolated from *Coffea arabica* L. *Braz. J. Pharm. Sci.* **2009**, *45*, 677–685. [CrossRef]
139. Serrato-Díaz, L.M.; Mariño, Y.A.; Bayman, P. Pathogens causing Anthracnose and fruit rots of coffee associated with the coffee berry borer and the entomopathogenic fungus *Beauveria bassiana* in Puerto Rico. *Phytopathology* **2020**, *110*, 1541–1552. [CrossRef]
140. Kenny, M.; Galea, V.; Price, T. Germination and growth of *Colletotrichum acutatum* and *Colletotrichum gloeosporioides* isolates from coffee in Papua New Guinea and their pathogenicity to coffee berries. *Australas. Plant Path.* **2012**, *41*, 519–528. [CrossRef]
141. María del Carmen, H.R.; Evans, H.C.; de Abreu, L.M.; de Macedo, D.M.; Ndacnou, M.K.; Bekele, K.B.; Barreto, R.W. New species and records of *Trichoderma* isolated as mycoparasites and endophytes from cultivated and wild coffee in Africa. *Sci. Rep.* **2021**, *11*, 1–30.
142. Gizaw, B.; Tsegaye, Z.; Tefera, G. Isolation, identification and characterization of yeast species from coffee waste collected from Sidama and Gedio zone. *J. Yeast Fungal Res.* **2016**, *7*, 47–53.
143. Lu, L.; Tibpromma, S.; Karunarathna, S.; Thiyagaraja, V.; XU, J.C.; Jayawardena, R.S.; Lumyong, S.; Hyde, K.D. Taxonomic and phylogenetic appraisal of a novel species and a new record of Stictidaceae from coffee in Yunnan Province, China. *Phytotaxa* **2021**, *528*, 111–124. [CrossRef]